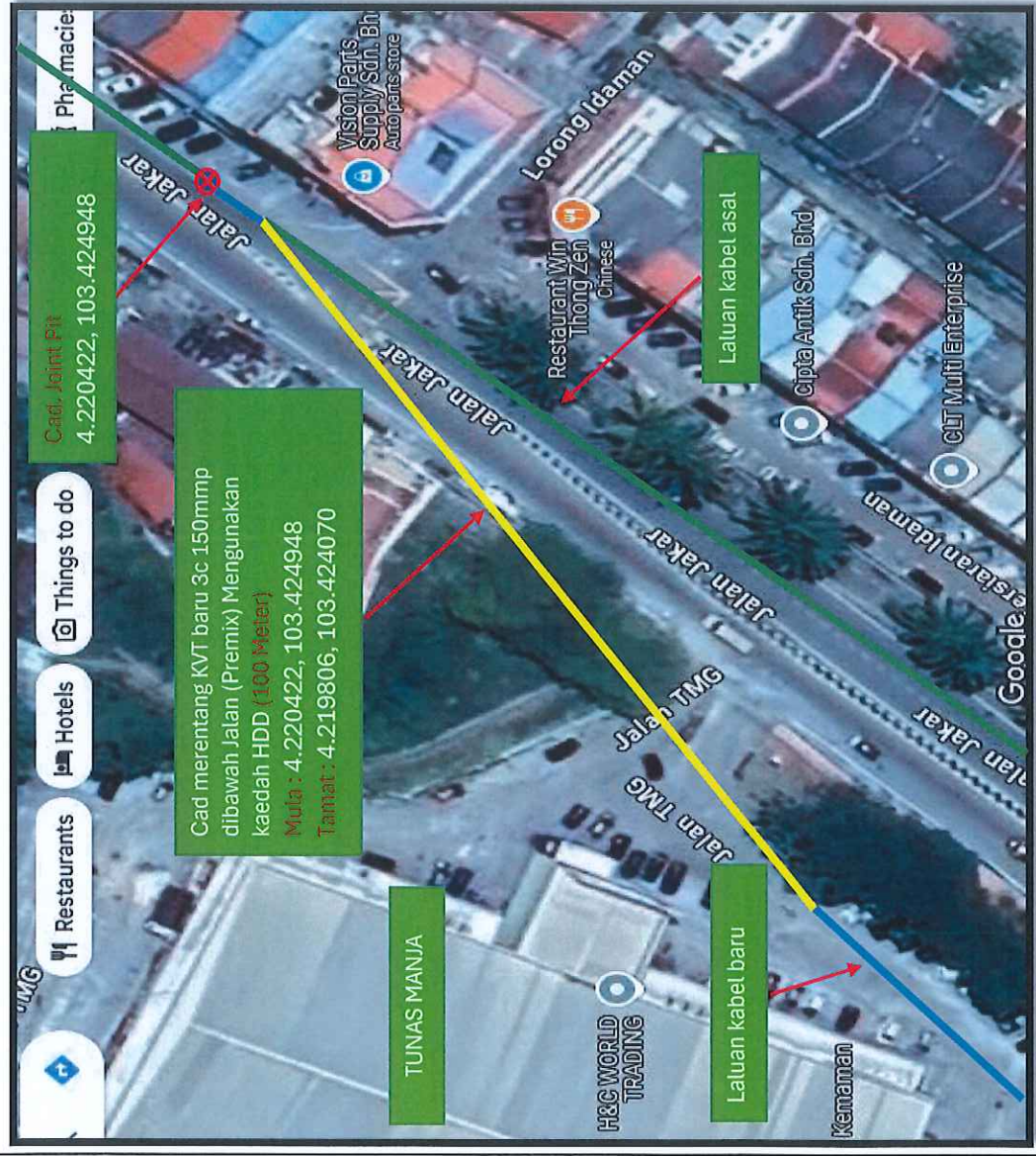

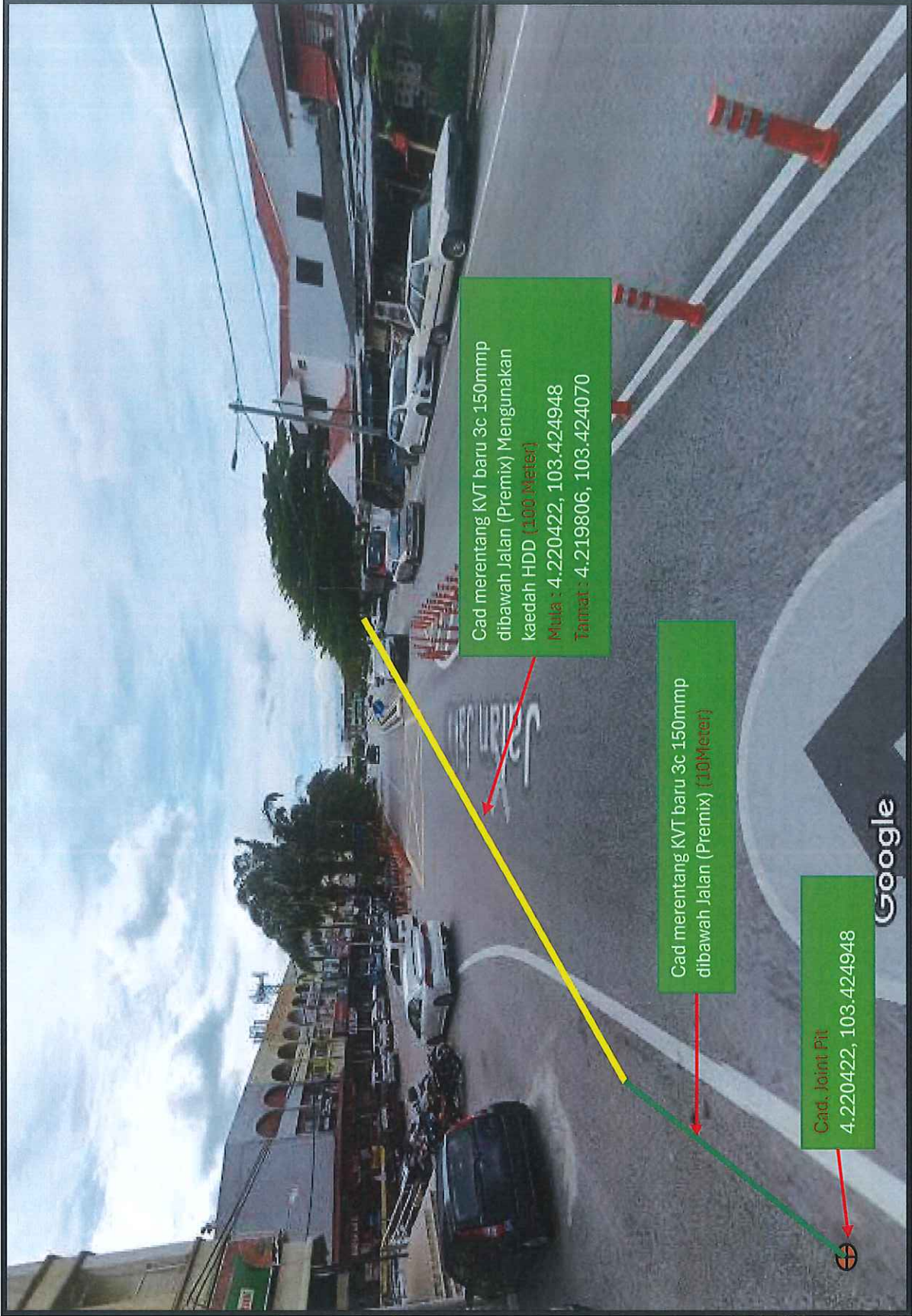


**PELAN TAPAK**



<p><b>LEGEND :</b></p> <p>— Laluan Kabel Asal</p> <p>— Cad. Merentang KVT baru 3c 150mmp (HDD)</p> <p>⊗ Cad. Joint Pit</p> <p>— Laluan Kabel Baru</p>	
<p></p> <p>TNB DISTRIBUTION (38695-A)</p>	
<p>DRAWN BY:</p>	<p><b>AHMAD FAJRUDIN BIN WAHAE</b> No. Pekerja : 10095235 Jurutera Teknik T/Biasa DN / SBU Maintenance - East Kemaman / Kerteh Tenaga Nasional Berhad</p>
<p>CHECKED BY:</p>	<p><b>ZAMANI BIN TENGAH</b> No. Pekerja : 10081374 Jurutera Teknik Tingkatan Kanan SBUM Kem / Kte Tenaga Nasional Berhad</p>
<p>APPROVED BY:</p>	<p></p>
<p>TITLE:</p>	<p>PEMBAIKAN PD MAPPING KABEL 11KV DIANTARA PETUNAS MANJA KE CSUB YUSNAH SUBZONE T3 KEMAMAN FY 2025</p>
<p></p>	<p>SCALE : nts</p>

PELAN LOKASI



Cadangan merentang KVT baru 3x150mmp, Tar (Premix) Menggunakan kaedah HDD (100 Meter)