



PROJEK PENYEDIAAN DAN PENYELENGGARAAN POINT OF PRESENCE (POP)
FASA 2: HAB INFRASTRUKTUR GENTIAN OPTIK BERHAMPIRAN DENGAN
SEKOLAH, KAWASAN PERINDUSTRIAN, PREMIS KERAJAAN DAN KOMUNITI
SEKITARNYA OLEH KEMENTERIAN KOMUNIKASI MALAYSIA - ZON UTARA
(KKMM.400-11/17/132(1))



TECHNICAL PROPOSAL POP2 ABC0063 SJK(C) KG COLDSTREAMS (D-SIDE)

Company Name:	STEADCOM SDN BHD
Company Address:	11-3, Jalan Puteri 2/6, Bandar Puteri, 47100 Puchong, Selangor
Prepared By:	Fassya
Date:	17/12/2024



Starting Point

Site / Boundary Name	Sungkai
Address	SJK(C) KG COLDSTREAM Jalan Kampung Coldstream, Bidor, Perak
District	Bidor
Postcode	35500
State	Perak
GPS Coordinate	4.046417, 101.238486
LRD	A

End Point

Site / Boundary Name	Sungkai
Address	Jalan Kampung Coldstream
District	Bidor
Postcode	35500
State	Perak
GPS Coordinate	4.044996, 101.240491
LRD	B



PROJEK PENYEDIAAN DAN PENYELENGGARAAN POINT OF PRESENCE (POP)
FASA 2: HAB INFRASTRUKTUR GENTIAN OPTIK BERHAMPIRAN DENGAN
SEKOLAH, KAWASAN PERINDUSTRIAN, PREMIS KERAJAAN DAN KOMUNITI
SEKITARNYA OLEH KEMENTERIAN KOMUNIKASI MALAYSIA - ZON UTARA
(KKMM.400-11/17/132(1))

STEADCOM
A member of OCK Group Berhad

1.0 Work Summary

No	Proposed Distance and Method	Unit	Qty
1	Horizontal Directional Drilling (HDD)	m	0
2	Carriage Way Open trench (CW)	m	0
3	Grass Verge Open Trenching (GV)	m	0
4	Micro trenching (MT)	m	0
	Total		

	Other Information	Unit	Qty
1	Proposed Manhole	EA	0
2	Proposed Pole	EA	34
3	Joint Closure	EA	0
4	Estimated time required for completion	days	0



PROJEK PENYEDIAAN DAN PENYELENGGARAAN POINT OF PRESENCE (POP)
FASA 2: HAB INFRASTRUKTUR GENTIAN OPTIK BERHAMPIRAN DENGAN
SEKOLAH, KAWASAN PERINDUSTRIAN, PREMIS KERAJAAN DAN KOMUNITI
SEKITARNYA OLEH KEMENTERIAN KOMUNIKASI MALAYSIA - ZON UTARA
(KKMM.400-11/17/132(1))

STEADCOM
A member of OCK Group Berhad

2.0 LOCAL AUTHORITY SUMMARY

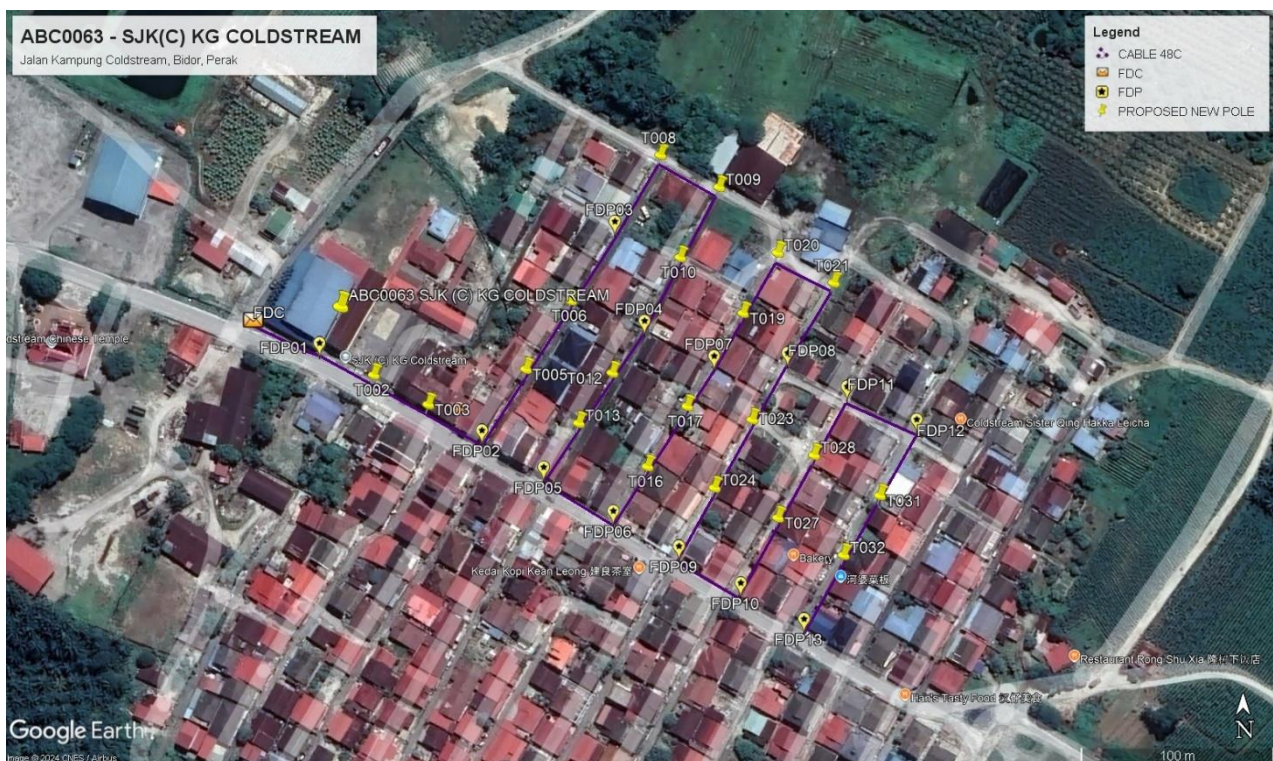
Daerah Tapah

Bil	Items	Owner	Quantity	Distance
1	HDD	JKR	-	-
		Majlis	-	-
		Estate / Private Land	-	-
2	New Pole	JKR	-	-
		Majlis	34	1217m
		Estate / Private Land	-	-
3	Existing TNB Pole	JKR	-	-
		Majlis	-	-
		Estate / Private Land	-	-
Total				1217m

3.0 SITE PLAN KMZ (Overview site area)
3.1 Proposed FDP and Closure



3.2 Proposed New Pole



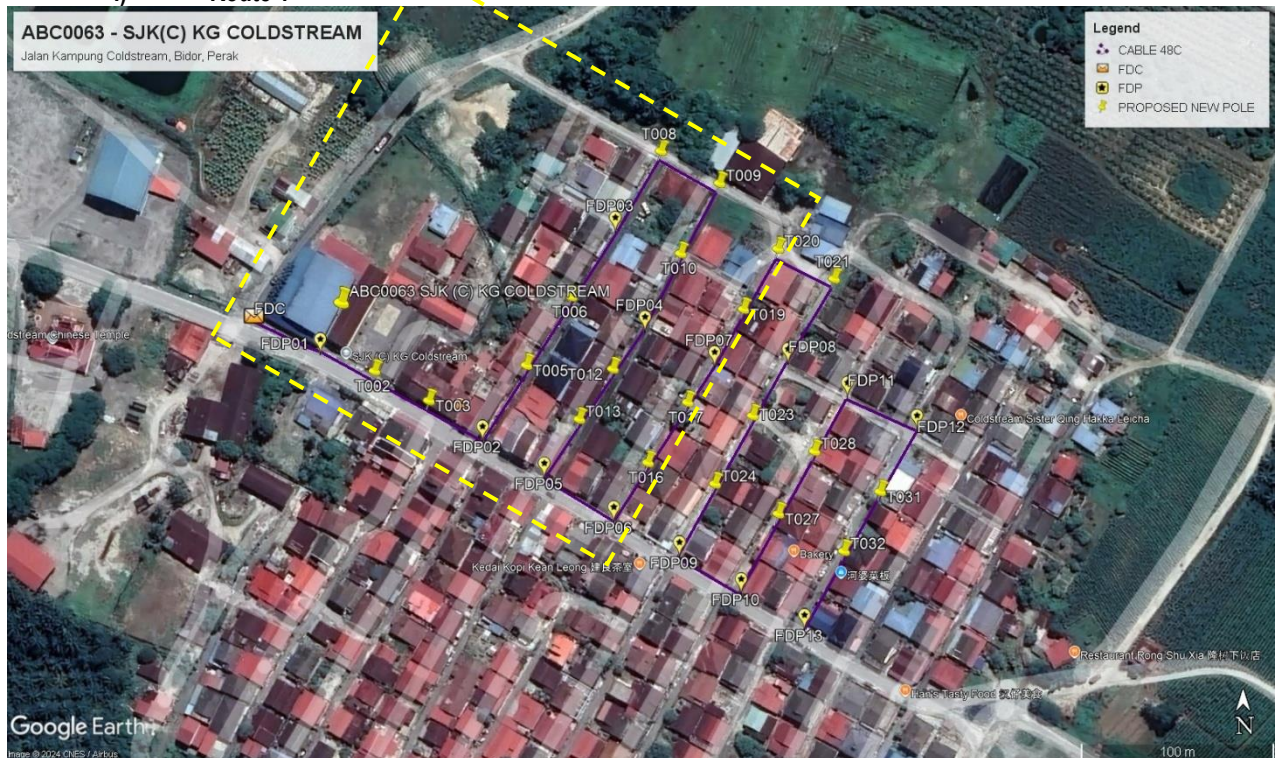
3.3 Site Plan KMZ Routing (All Local Authority)



Purple Colour – PBT Road

3.4 Site Plan – KMZ (All site Area)

i) Route 1





Route: 1.1

ii) Route 2





PROJEK PENYEDIAAN DAN PENYELENGGARAAN POINT OF PRESENCE (POP)
 FASA 2: HAB INFRASTRUKTUR GENTIAN OPTIK BERHAMPIRAN DENGAN
 SEKOLAH, KAWASAN PERINDUSTRIAN, PREMIS KERAJAAN DAN KOMUNITI
 SEKITARNYA OLEH KEMENTERIAN KOMUNIKASI MALAYSIA - ZON UTARA
 (KKMM.400-11/17/132(1))



4.0 Proposed New Pole Lat & long Table

No.	Label	Pole & Manhole ID	Latitud	Longitud	Local Authority
1	FDC	T000	4.0463595	101.2380953	MAJLIS DAERAH TAPAH
2	FDP01	T001	4.0462319	101.2384048	MAJLIS DAERAH TAPAH
3	FDP02	T004	4.0458257	101.2391621	MAJLIS DAERAH TAPAH
4	FDP03	T007	4.046797	101.2397821	MAJLIS DAERAH TAPAH
5	FDP04	T011	4.046335	101.2399206	MAJLIS DAERAH TAPAH
6	FDP05	T014	4.0456547	101.2394502	MAJLIS DAERAH TAPAH
7	FDP06	T015	4.045451	101.2397748	MAJLIS DAERAH TAPAH
8	FDP07	T018	4.0461713	101.2402452	MAJLIS DAERAH TAPAH
9	FDP08	T022	4.0461858	101.240588	MAJLIS DAERAH TAPAH
10	FDP09	T025	4.0452873	101.2400811	MAJLIS DAERAH TAPAH
11	FDP10	T026	4.0451163	101.2403692	MAJLIS DAERAH TAPAH
12	FDP11	T029	4.0460294	101.2408652	MAJLIS DAERAH TAPAH
13	FDP12	T030	4.0458766	101.2411898	MAJLIS DAERAH TAPAH
14	FDP13	T033	4.044949	101.2406646	MAJLIS DAERAH TAPAH



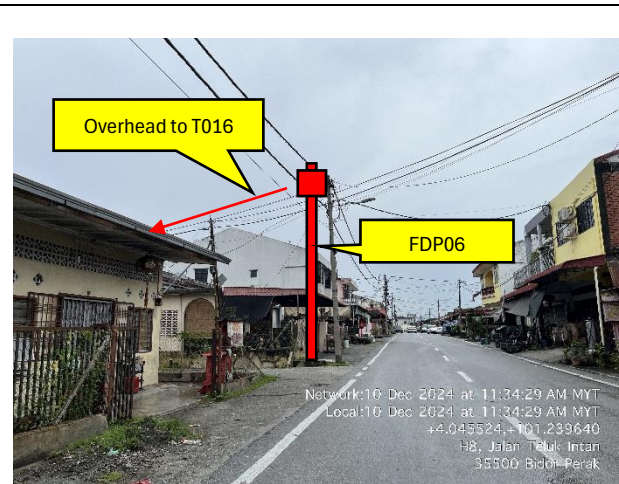
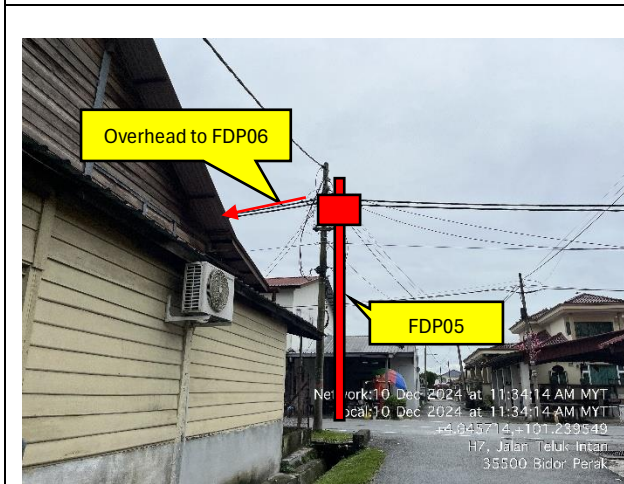
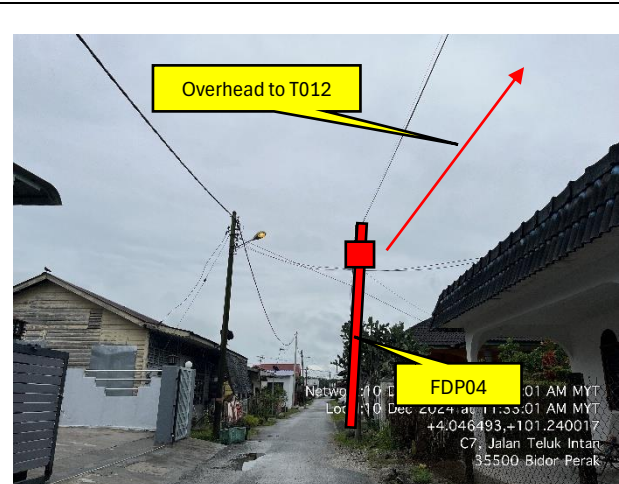
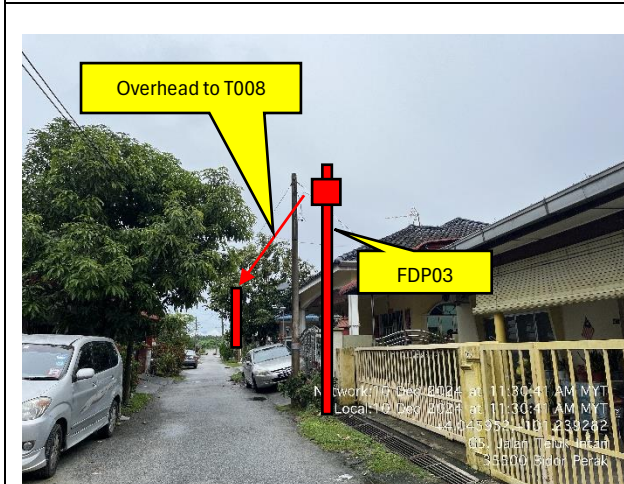
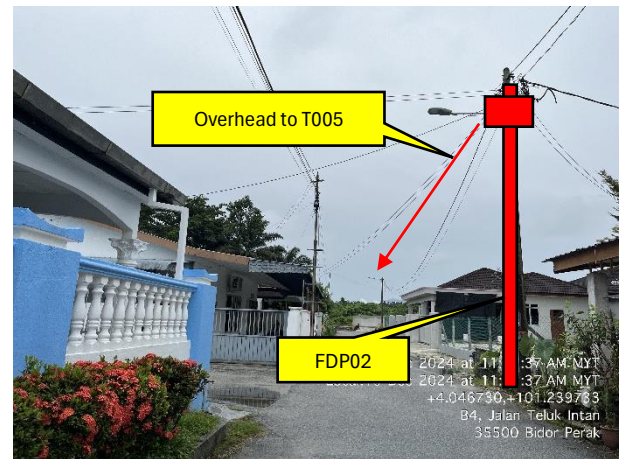
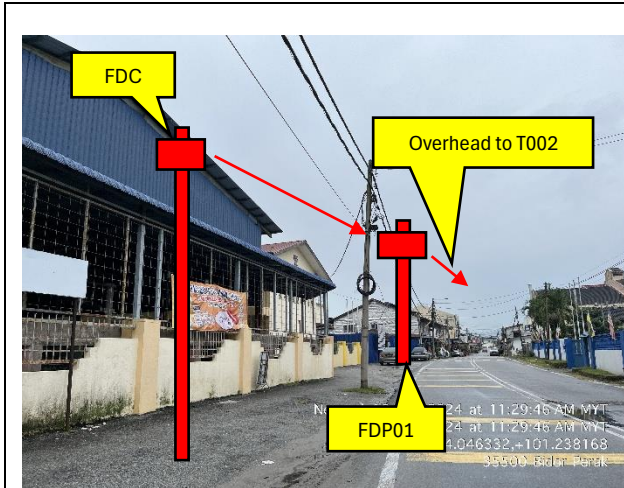
PROJEK PENYEDIAAN DAN PENYELENGGARAAN POINT OF PRESENCE (POP)
 FASA 2: HAB INFRASTRUKTUR GENTIAN OPTIK BERHAMPIRAN DENGAN
 SEKOLAH, KAWASAN PERINDUSTRIAN, PREMIS KERAJAAN DAN KOMUNITI
 SEKITARNYA OLEH KEMENTERIAN KOMUNIKASI MALAYSIA - ZON UTARA
 (KKMM.400-11/17/132(1))

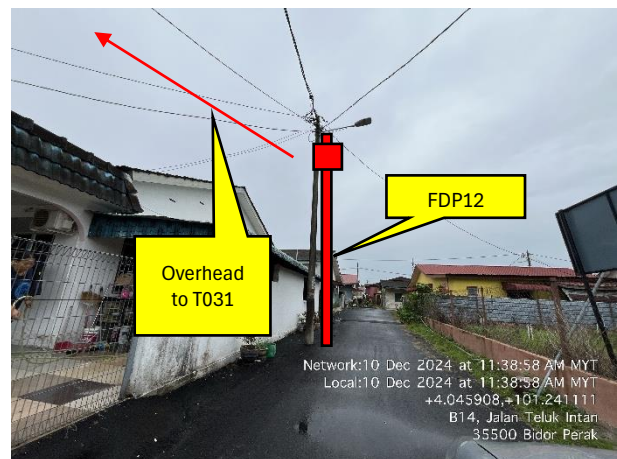
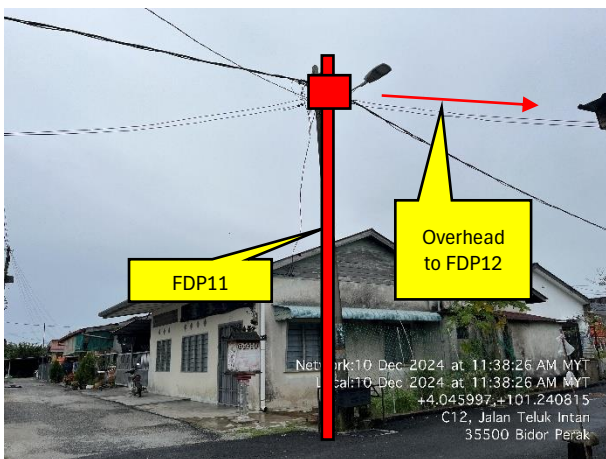
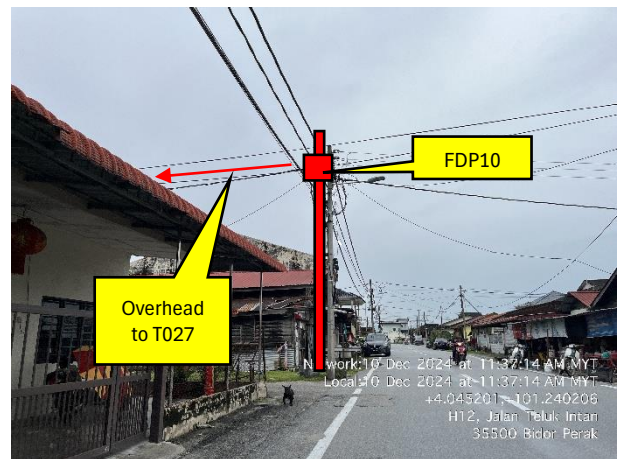
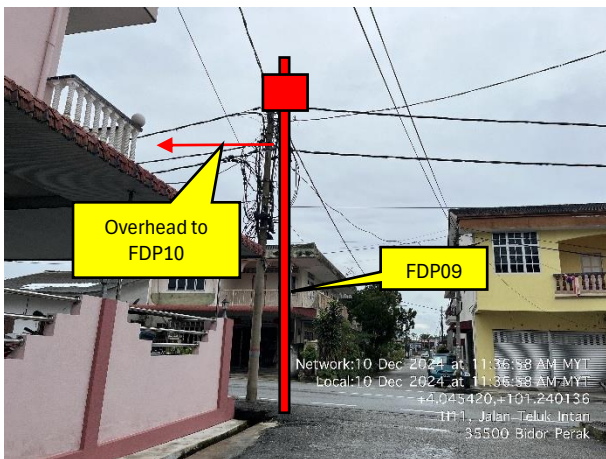
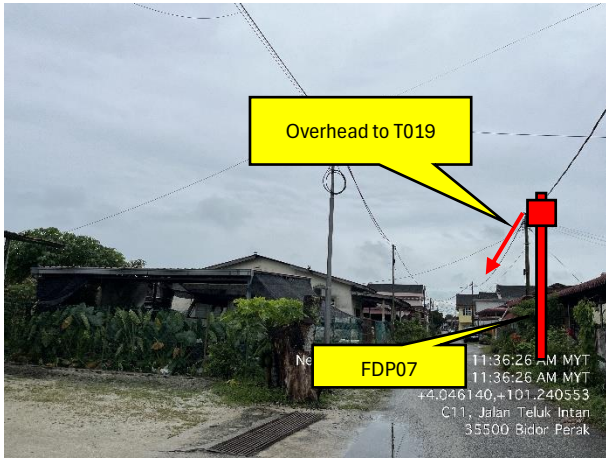


4.1 Overall Pole (Proposed New Pole)

No.	Pole & Manhole ID	Distance	Latitud	Longitud	Local Authority
1	T000	0	4.0463595	101.2380953	MAJLIS DAERAH TAPAH
2	T001	37	4.0462319	101.2384048	MAJLIS DAERAH TAPAH
3	T002	30	4.0461121	101.2386451	MAJLIS DAERAH TAPAH
4	T003	32	4.045975	101.238899	MAJLIS DAERAH TAPAH
5	T004	34	4.0458257	101.2391621	MAJLIS DAERAH TAPAH
6	T005	41	4.046139	101.2393546	MAJLIS DAERAH TAPAH
7	T006	42	4.0464573	101.2395647	MAJLIS DAERAH TAPAH
8	T007	45	4.046797	101.2397821	MAJLIS DAERAH TAPAH
9	T008	43	4.0471347	101.2399818	MAJLIS DAERAH TAPAH
10	T009	35	4.0469857	101.2402555	MAJLIS DAERAH TAPAH
11	T010	41	4.0466588	101.2400744	MAJLIS DAERAH TAPAH
12	T011	40	4.046335	101.2399206	MAJLIS DAERAH TAPAH
13	T012	30	4.0461221	101.2397575	MAJLIS DAERAH TAPAH
14	T013	31	4.0458884	101.2396007	MAJLIS DAERAH TAPAH
15	T014	31	4.0456547	101.2394502	MAJLIS DAERAH TAPAH
16	T015	43	4.045451	101.2397748	MAJLIS DAERAH TAPAH
17	T016	31	4.0456864	101.2399215	MAJLIS DAERAH TAPAH
18	T017	37	4.045966	101.2401072	MAJLIS DAERAH TAPAH
19	T018	27	4.0461713	101.2402452	MAJLIS DAERAH TAPAH
20	T019	29	4.0463997	101.2403678	MAJLIS DAERAH TAPAH
21	T020	36	4.0466803	101.2405285	MAJLIS DAERAH TAPAH
22	T021	33	4.0465406	101.2407904	MAJLIS DAERAH TAPAH
23	T022	45	4.0461858	101.240588	MAJLIS DAERAH TAPAH
24	T023	37	4.0459043	101.24041	MAJLIS DAERAH TAPAH
25	T024	40	4.0455878	101.240234	MAJLIS DAERAH TAPAH
26	T025	37	4.0452873	101.2400811	MAJLIS DAERAH TAPAH
27	T026	37	4.0451163	101.2403692	MAJLIS DAERAH TAPAH
28	T027	41	4.0454482	101.2405304	MAJLIS DAERAH TAPAH
29	T028	37	4.0457389	101.2406986	MAJLIS DAERAH TAPAH
30	T029	37	4.0460294	101.2408652	MAJLIS DAERAH TAPAH
31	T030	40	4.0458766	101.2411898	MAJLIS DAERAH TAPAH
32	T031	41	4.0455513	101.2410059	MAJLIS DAERAH TAPAH
33	T032	36	4.0452738	101.2408364	MAJLIS DAERAH TAPAH
34	T033	41	4.044949	101.2406646	MAJLIS DAERAH TAPAH

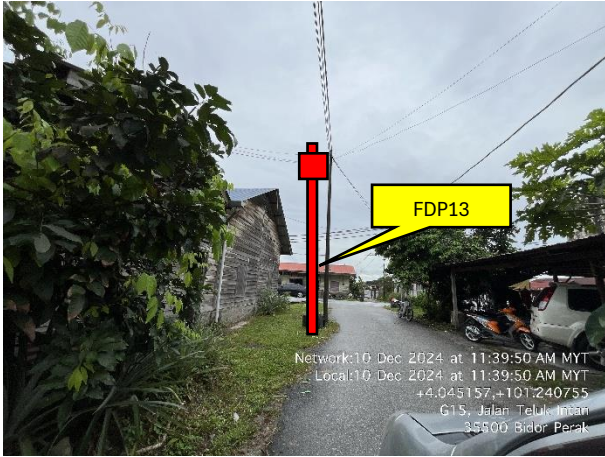
5.0 SITE PHOTO – PROPOSED NEW POLE







PROJEK PENYEDIAAN DAN PENYELENGGARAAN POINT OF PRESENCE (POP)
FASA 2: HAB INFRASTRUKTUR GENTIAN OPTIK BERHAMPIRAN DENGAN
SEKOLAH, KAWASAN PERINDUSTRIAN, PREMIS KERAJAAN DAN KOMUNITI
SEKITARNYA OLEH KEMENTERIAN KOMUNIKASI MALAYSIA - ZON UTARA
(KKMM.400-11/17/132(1))



N/A

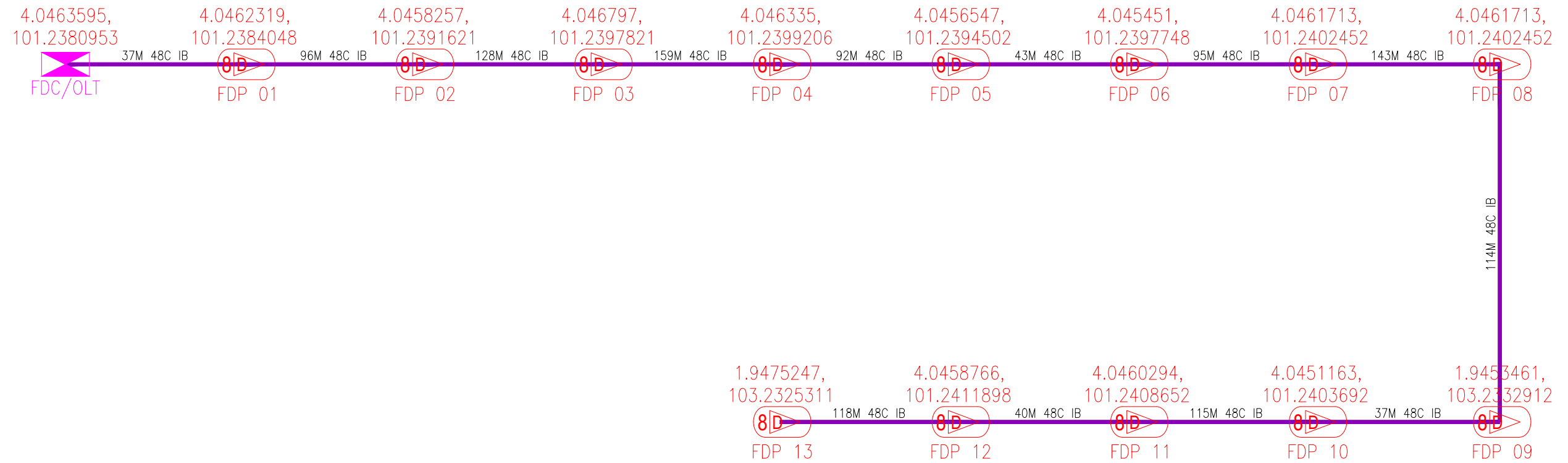


PROJEK PENYEDIAAN DAN PENYELENGGARAAN POINT OF PRESENCE (POP)
FASA 2: HAB INFRASTRUKTUR GENTIAN OPTIK BERHAMPIRAN DENGAN
SEKOLAH, KAWASAN PERINDUSTRIAN, PREMIS KERAJAAN DAN KOMUNITI
SEKITARNYA OLEH KEMENTERIAN KOMUNIKASI MALAYSIA - ZON UTARA
(KKMM.400-11/17/132(1))



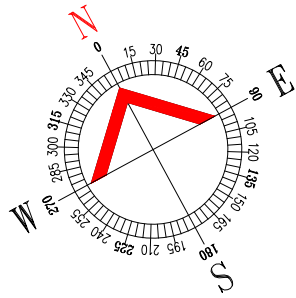
6.0 3rd PARTIES DEPENDENCIES

NO	LOCAL COUNCIL / AUTHORITY	REMARK
1	N/A	



LEGEND	NOS.		NOS.		NOS.		NOS.		NOS.		NOS.
	12C FOC	Installed 1:4 splitter in FDC		Installed Pole (9m)		New Manhole(JRC7)		Tension Small / Tension Big		MH NO.	
	24C FOC	FDP with (1:8) splitter		Installed Riser		House Number		Existing Manhole		Existing TNB Pole NO.	
	48C FOC	Closure		Suspension Big		Existing TNB Pole		Closure NO.		New Pole NO.	
	96C FOC	New Manhole (PIT)		Suspension Small		LOOP		FDP NO.			
	144C FOC	Installed Pole (7.5M)		FDC		FDP Boundary		FDC NO.			

KEY PLAN : POP2 PROJECT IN PERAK	MAIN CONTRACTOR PRIVASAT	SUB-CONTRACTOR : A member of FOCK Group Berhad	PROJECT TITLE : CONTRACTOR FOR SURVEY, TECHNICAL PROPOSAL AND WAYLEAVE, & PERMIT APPROVAL -POP2 PROJECT	DRAWING TITLE: SINGLE LINE DRAWING ABC0063 SEKOLAH JENIS KEBANGSAAN (CINA) KG COLDSTREAM	Design By : FITRI	Date : 17/12/2024
				PROJECT PHASE: POP2	Checked By : AMSYAR	Job Number : JOB_NUMBER
				DRAWING NUMBER : ABC0063-SLD-01	Sheet : 1/1	
				THIS PRINT AND ITS COPYRIGHT ARE THE PROPERTY OF ALLO TECHNOLOGY SDN BHD		Size : A3



LEGEND	NOS.	NOS.	NOS.	NOS.	NOS.	NOS.	NOS.
	12C FOC		Installed Pole (9m)		New Manhole(JRC7)		Tension Small / Tension Big
	24C FOC		Installed Riser		House Number		MH NO.
	48C FOC		Installed Pole (7.5M)		Existing TNB Pole		Existing TNB Pole NO.
	96C FOC		Installed Pole (7.5M)		Existing TNB Pole		New Pole NO.
	144C FOC		Installed Pole (7.5M)		Existing TNB Pole		FDP NO.
			Installed Pole (7.5M)		Existing TNB Pole		FDC NO.
			Installed Pole (7.5M)		Existing TNB Pole		SEE A-A in this page
			Installed Pole (7.5M)		Existing TNB Pole		SEE SHEET XXX

ACTUAL HOMEPASS :

KEY PLAN : POP2 PROJECT IN PERAK	MAIN CONTRACTOR 	SUB-CONTRACTOR : A member of FOCK Group Berhad	PROJECT TITLE : CONTRACTOR FOR SURVEY, TECHNICAL PROPOSAL AND WAYLEAVE, & PERMIT APPROVAL -POP2 PROJECT	DRAWING TITLE: CONSTRUCTION DRAWING ABC0063 SEKOLAH JENIS KEBANGSAAN (CINA) KG COLDSTREAM	Design By : FITRI Drawn By : FITRI Checked By : AMSYAR	Date : 17/12/2024 Scale : N.T.S Job Number : JOB_NUMBER
				PROJECT PHASE: POP2	DRAWING NUMBER : ABC0063-CD-01	Sheet : INDEX Size : A3

THIS PRINT AND ITS COPYRIGHT ARE THE PROPERTY OF ALLO TECHNOLOGY SDN BHD