

TECHNICAL PROPOSAL

POP2 AEE0039 SEKOLAH MENENGAH SYEIKH ABDUL GHANI (D-SIDE)

Company Name : ANJANG JAYA SDN. BHD
Company Address : NO 5 Jalan Jaya 5/1 , Taman Jaya 5, 28000 Temerloh , Pahang
Prepared By : Mohd Hafizulhaziq Bin Ramli
Date : 28/08/2024



Starting Point

Site / Boundary Name : BIDOR ,PERAK
Address : SMK Syeikh Ghani Abdul Ghani , Bidor , Perak
District : Bidor
Postcode : 35500
State : Perak
GPS Coordinate : [4.105710, 101.287189](#)
LRD : A

End Point

Site / Boundary Name : BIDOR , PERAK
Address : No 9,Jalan Tiga, Bidor , Perak
District : Bidor
Postcode : 35500
State : Perak
GPS Coordinate : [4.103821, 101.290005](#)
LRD : B



SUPPLY, INSTALLATION AND COMMISSIONING OF FTTX NETWORK
INFRASTRUCTURE FOR ALLO TECHNOLOGY SDN BHD POP 2 PROJECT
(D-SIDE) - PMU - BDOR - AEE0039 SYEIKH ABDUL GHANI



1.0 WORK SUMMARY

NO	PROPOSED DISTANCE AND METHOD	UNIT	QUANTITY
1	Horizontal Directional Drilling (HDD)	m	0
2	Carriage Way Open Trench (CW)	m	0
3	Grass Verge Open Trenching (GV)	m	0
4	Micro Trenching (MT)	m	0
Total			0

NO	OTHER INFORMATION	UNIT	QUANTITY
1	Installation of Short Span ADSS Fibre Cables	m	2,450
2	Install New Pole	ea	70
3	Install New JRC7 Manhole	ea	0
4	Install GI Riser 100mm	ea	0
5	Install Fiber Distribution Point and Closure (Splicing, Termination and Testing)	ea	13
6	Estimated Time Required for Completion	days	30



SUPPLY, INSTALLATION AND COMMISSIONING OF FTTX NETWORK INFRASTRUCTURE FOR ALLO TECHNOLOGY SDN BHD POP 2 PROJECT (D-SIDE) - PMU BDOR - AEE0039 SYEIKH ABDUL GHANI



2.0 LOCAL AUTHORITY SUMMARY

Daerah TAPAH

NO	HDD	ITEMS	Owner	Quantity	Distance (m)
1	New Pole	JKR		8nos	280
		Majlis		62nos	2,170
		Estate / Private Land		-	-
2		JKR		-	-
		Majlis		-	-
		Estate / Private Land		-	-
Total Distance (m)					2,450

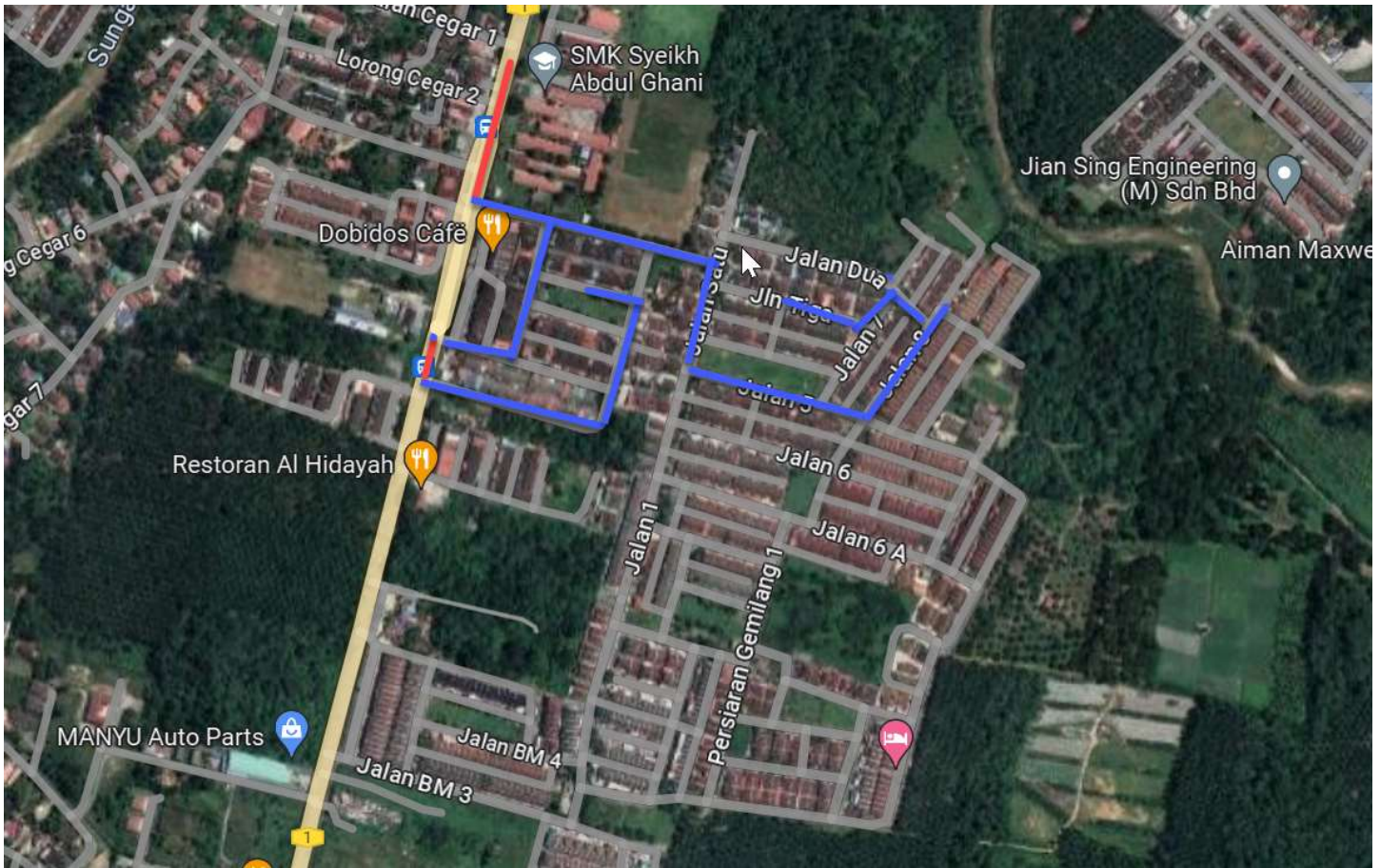
3.0 SITE PLAN (KMZ)

3.1 Overview Site Area





3.2 Site Plan - KMZ Routing (All Local Authority)



Red Colour - JKR Road

Blue Colour - Majlis Road

3.0 PROPOSED NEW MANHOLE

Proposed New Manhole Coordinate					
No.	Manhole Number	Distance (m)	Latitude	Longitude	Local Authority
1	MH01	-	-	-	-
2	MH02	-	-	-	-

4.0 PROPOSED NEW POLE

Proposed New Pole Coordinate					
No.	Pole Number	Distance (m)	Latitude	Longitude	Local Authority
1	T001	20	4° 6'19.83"N	101°17'14.02"E	JKR Daerah LMS Batang Padang
2	T002	20	4° 6'19.08"N	101°17'13.80"E	JKR Daerah LMS Batang Padang
3	T003	32	4° 6'18.13"N	101°17'13.57"E	JKR Daerah LMS Batang Padang
4	T004	31	4° 6'17.41"N	101°17'13.39"E	JKR Daerah LMS Batang Padang
5	T005	34	4° 6'17.18"N	101°17'13.93"E	JKR Daerah LMS Batang Padang
6	T006	30	4° 6'16.85"N	101°17'14.87"E	Majlis Perbandaran Tapah
7	T007	25	4° 6'16.62"N	101°17'15.94"E	Majlis Perbandaran Tapah
8	T008	40	4° 6'15.41"N	101°17'15.64"E	Majlis Perbandaran Tapah
9	T009	39	4° 6'14.70"N	101°17'15.46"E	Majlis Perbandaran Tapah
10	T010	42	4° 6'13.95"N	101°17'15.24"E	Majlis Perbandaran Tapah
11	T011	30	4° 6'13.38"N	101°17'15.89"E	Majlis Perbandaran Tapah
12	T012	30	4° 6'13.10"N	101°17'16.78"E	Majlis Perbandaran Tapah
13	T013	33	4° 6'12.53"N	101°17'14.86"E	Majlis Perbandaran Tapah
14	T014	34	4° 6'11.85"N	101°17'14.70"E	Majlis Perbandaran Tapah
15	T015	33	4° 6'11.49"N	101°17'13.81"E	Majlis Perbandaran Tapah
16	T016	31	4° 6'11.83"N	101°17'12.67"E	Majlis Perbandaran Tapah
17	T017	38	4° 6'12.02"N	101°17'11.86"E	JKR Daerah LMS Batang Padang
18	T018	22	4° 6'11.83"N	101°17'11.72"E	JKR Daerah LMS Batang Padang
19	T019	22	4° 6'10.75"N	101°17'11.50"E	JKR Daerah LMS Batang Padang
20	T020	34	4° 6'10.55"N	101°17'12.40"E	Majlis Perbandaran Tapah
21	T021	31	4° 6'10.12"N	101°17'13.70"E	Majlis Perbandaran Tapah
22	T022	32	4° 6'9.79"N	101°17'14.78"E	Majlis Perbandaran Tapah
23	T023	34	4° 6'9.36"N	101°17'16.13"E	Majlis Perbandaran Tapah
24	T024	34	4° 6'9.00"N	101°17'17.38"E	Majlis Perbandaran Tapah
25	T025	32	4° 6'9.76"N	101°17'18.06"E	Majlis Perbandaran Tapah
26	T026	35	4° 6'10.30"N	101°17'17.79"E	Majlis Perbandaran Tapah
27	T027	32	4° 6'10.68"N	101°17'16.51"E	Majlis Perbandaran Tapah
28	T028	33	4° 6'10.66"N	101°17'18.39"E	Majlis Perbandaran Tapah
29	T029	34	4° 6'11.87"N	101°17'18.72"E	Majlis Perbandaran Tapah
30	T030	32	4° 6'13.18"N	101°17'19.10"E	Majlis Perbandaran Tapah
31	T031	32	4° 6'13.79"N	101°17'18.47"E	Majlis Perbandaran Tapah

Proposed New Pole Coordinate

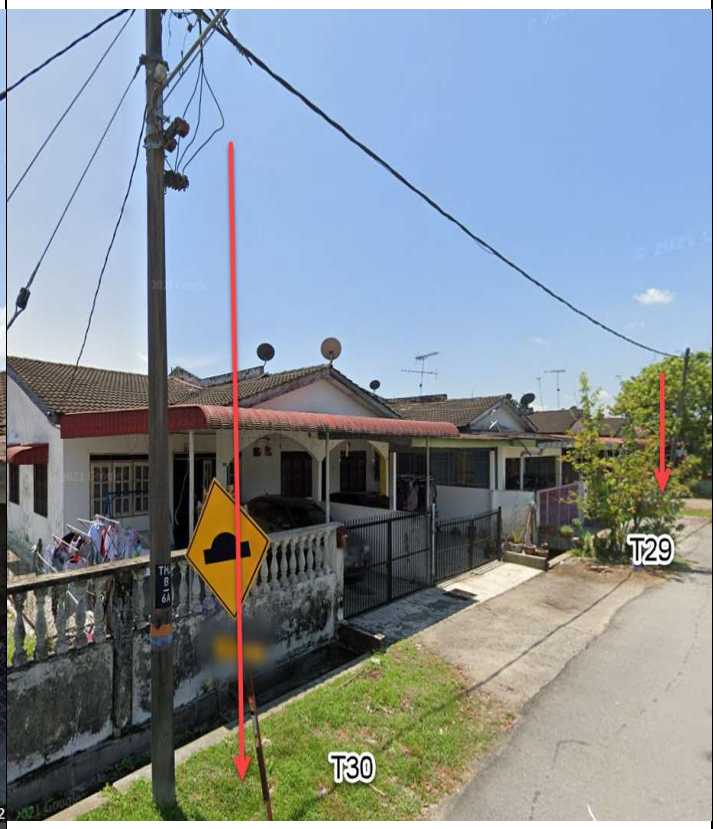
No.	Pole Number	Distance (m)	Latitude	Longitude	Local Authority
32	T032	34	4° 6'13.99"N	101°17'17.82"E	Majlis Perbandaran Tapah
33	T033	33	4° 6'14.20"N	101°17'16.93"E	Majlis Perbandaran Tapah
34	T034	32	4° 6'16.32"N	101°17'17.13"E	Majlis Perbandaran Tapah
35	T035	31	4° 6'15.94"N	101°17'18.31"E	Majlis Perbandaran Tapah
36	T036	30	4° 6'15.67"N	101°17'19.55"E	Majlis Perbandaran Tapah
37	T037	33	4° 6'15.43"N	101°17'20.53"E	Majlis Perbandaran Tapah
38	T038	32	4° 6'15.43"N	101°17'20.53"E	Majlis Perbandaran Tapah
39	T039	31	4° 6'15.61"N	101°17'22.23"E	Majlis Perbandaran Tapah
40	T040	33	4° 6'15.78"N	101°17'22.63"E	Majlis Perbandaran Tapah
41	T041	32	4° 6'15.62"N	101°17'23.37"E	Majlis Perbandaran Tapah
42	T042	37	4° 6'15.33"N	101°17'24.44"E	Majlis Perbandaran Tapah
43	T043	38	4° 6'14.71"N	101°17'21.61"E	Majlis Perbandaran Tapah
44	T044	35	4° 6'14.00"N	101°17'21.42"E	Majlis Perbandaran Tapah
45	T045	39	4° 6'13.34"N	101°17'21.26"E	Majlis Perbandaran Tapah
46	T046	33	4° 6'12.30"N	101°17'21.06"E	Majlis Perbandaran Tapah
47	T047	29	4° 6'11.55"N	101°17'20.91"E	Majlis Perbandaran Tapah
48	T048	25	4° 6'11.05"N	101°17'20.79"E	Majlis Perbandaran Tapah
49	T049	15	4° 6'10.75"N	101°17'21.28"E	Majlis Perbandaran Tapah
50	T050	33	4° 6'10.47"N	101°17'22.54"E	Majlis Perbandaran Tapah
51	T051	32	4° 6'10.24"N	101°17'23.65"E	Majlis Perbandaran Tapah
52	T052	33	4° 6'9.92"N	101°17'24.52"E	Majlis Perbandaran Tapah
53	T053	31	4° 6'9.69"N	101°17'25.62"E	Majlis Perbandaran Tapah
54	T054	31	4° 6'9.38"N	101°17'26.71"E	Majlis Perbandaran Tapah
55	T055	30	4° 6'9.65"N	101°17'27.44"E	Majlis Perbandaran Tapah
56	T056	31	4° 6'10.48"N	101°17'28.10"E	Majlis Perbandaran Tapah
57	T057	33	4° 6'11.67"N	101°17'28.95"E	Majlis Perbandaran Tapah
58	T058	28	4° 6'12.44"N	101°17'29.50"E	Majlis Perbandaran Tapah
59	T059	30	4° 6'12.85"N	101°17'29.69"E	Majlis Perbandaran Tapah
60	T060	34	4° 6'13.40"N	101°17'30.39"E	Majlis Perbandaran Tapah
61	T061	34	4° 6'13.95"N	101°17'30.79"E	Majlis Perbandaran Tapah
62	T062	37	4° 6'13.30"N	101°17'29.01"E	Majlis Perbandaran Tapah
63	T063	37	4° 6'13.91"N	101°17'28.34"E	Majlis Perbandaran Tapah
64	T064	33	4° 6'13.03"N	101°17'27.80"E	Majlis Perbandaran Tapah
65	T065	30	4° 6'12.86"N	101°17'27.52"E	Majlis Perbandaran Tapah
66	T066	34	4° 6'12.09"N	101°17'27.13"E	Majlis Perbandaran Tapah
67	T067	31	4° 6'13.22"N	101°17'26.04"E	Majlis Perbandaran Tapah
68	T068	32	4° 6'13.64"N	101°17'24.59"E	Majlis Perbandaran Tapah
69	T069	31	4° 6'13.87"N	101°17'23.50"E	Majlis Perbandaran Tapah
70	T070	33	4° 6'14.07"N	101°17'22.80"E	Majlis Perbandaran Tapah

5.0 SITE PHOTOS - PROPOSED HDD AND NEW MANHOLE

N/A

6.0 SITE PHOTOS - PROPOSED NEW POLE







SUPPLY, INSTALLATION AND COMMISSIONING OF FTTX NETWORK
INFRASTRUCTURE FOR ALLO TECHNOLOGY SDN BHD POP 2 PROJECT
(D-SIDE) - PMU BDOR - AEE0039 SYEIKH ABDUL GHANI





SUPPLY, INSTALLATION AND COMMISSIONING OF FTTX NETWORK
INFRASTRUCTURE FOR ALLO TECHNOLOGY SDN BHD POP 2 PROJECT
(D-SIDE) - PMU BDOR - AEE0039 SYEIKH ABDUL GHANI



7.0 3rd PARTIES DEPENDENCIES

NO	LOCAL COUNCIL / AUTHORITY	REMARK
1	Majlis Daerah Tapah	2170m
2	JKR Daerah Tapah	280m

