

TECHNICAL PROPOSAL

POP2 ABA3028 SEKOLAH KEBANGSAAN SUNGAI MEGAT ARIS (D-SIDE)

Company Name	:	SEGALA DELIMA (M) SDN BHD
Company Address	:	No. 8, Jalan Ampang Baru 6B, Pusat Perdagangan Baru, 31350 Ipoh, Perak
Prepared By	:	Mohamad Helmi
Date	:	11/01/2025



Point A



Point B

SK Sungai Megat Aris
P084 FDP14
12.01.2025 10:14
5.10987, 100.39985
A22, Kuala Bagan Tiang, 34200 Parit Buntar

Starting Point

Site / Boundary Name	:	Sekolah Kebangsaan Sungai Megat Aris
District	:	Tanjong Piandang
Postcode	:	34250
State	:	Perak
GPS Coordinate	:	5.106560 100.409293
LRD	:	A

End Point

Site / Boundary Name	:	Sekolah Kebangsaan Sungai Megat Aris
Address	:	Sungai Megat Aris, Bagan Tiang, Jalan Bawah
District	:	Tanjong Piandang
Postcode	:	34250
State	:	Perak
GPS Coordinate	:	5.109714 100.400408
LRD	:	B

1.0 WORK SUMMARY

NO	PROPOSED DISTANCE AND METHOD	UNIT	QUANTITY
1	Horizontal Directional Drilling (HDD)	m	0
2	Carriage Way Open Trench(CW)	m	0
3	Grass Verge Open Trenching (GV)	m	0
4	Micro Trenching (MT)	m	0
Total			0

NO	OTHER INFORMATION	UNIT	QUANTITY
1	Installation of Short Span ADSS Fiber Cables	m	2275
2	Install New Pole	ea	86
3	Install New JRC7 Manhole	ea	-
4	Install GI Riser 100mm	ea	-
5	Install Fiber Distribution Point and Closure (Splicing, Termination and Testing)	ea	16
6	Estimated Time Required for Completion	days	90

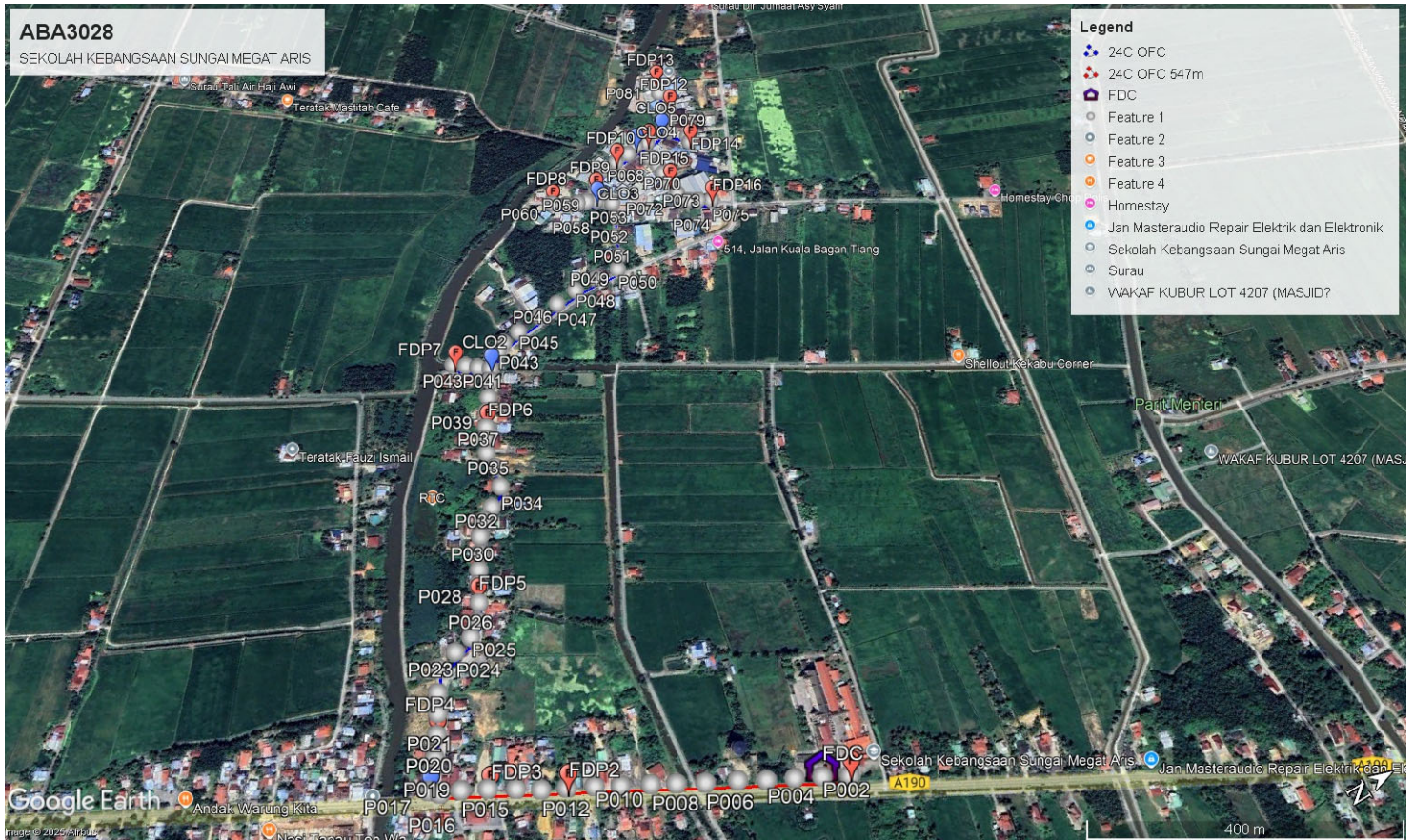
2.0 LOCAL AUTHORITY SUMMARY

Daerah Kerian

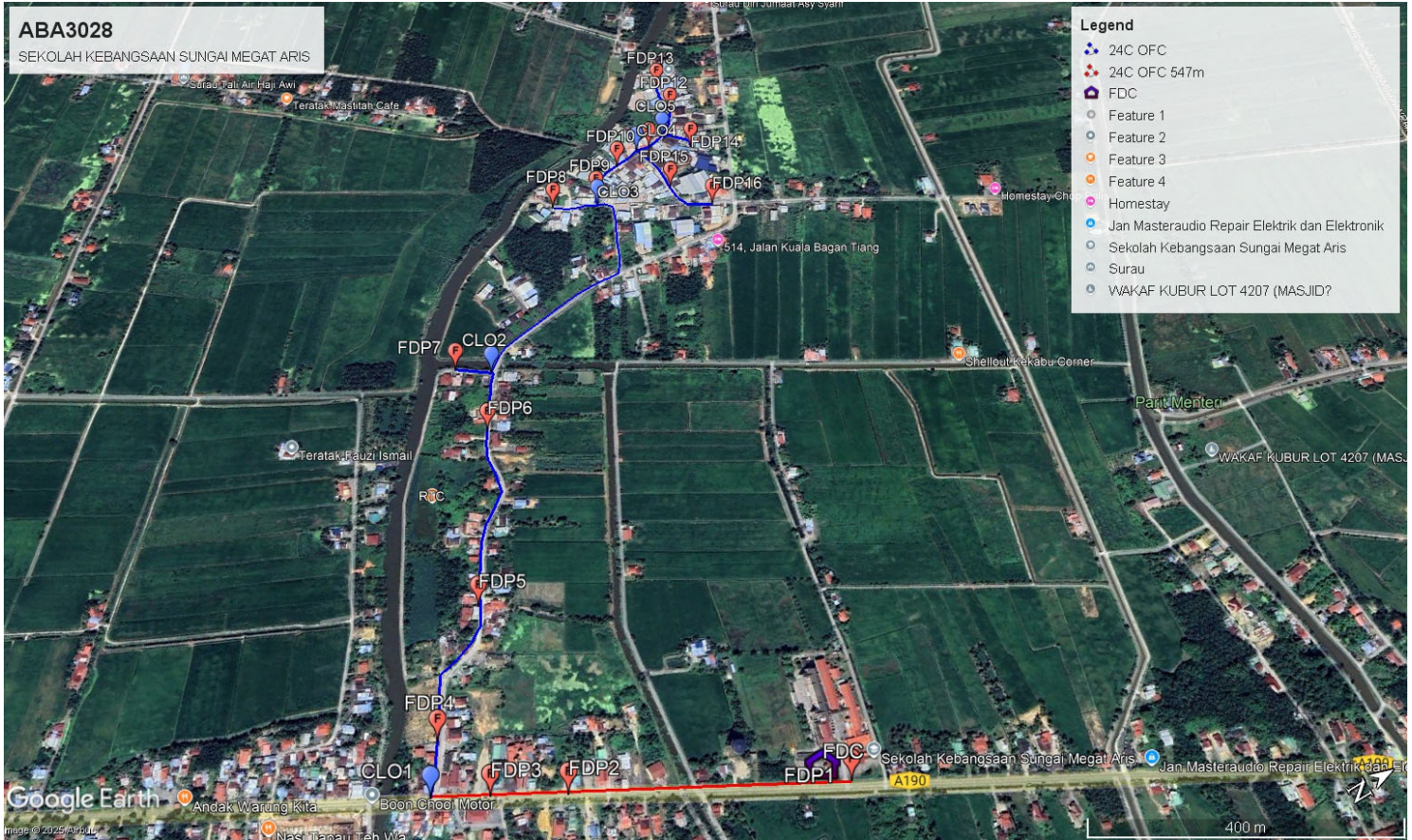
NO	ITEMS	Owner	Quantity	Distance (m)
1	HDD	JKR	-	-
		Majlis	-	-
		Estate / Private Land	-	-
2	New Pole	JKR	17	547
		Majlis	69	1,728
		Estate / Private Land	-	-
Total Distance (m)				2,275

3.0 SITE PLAN (KMZ)

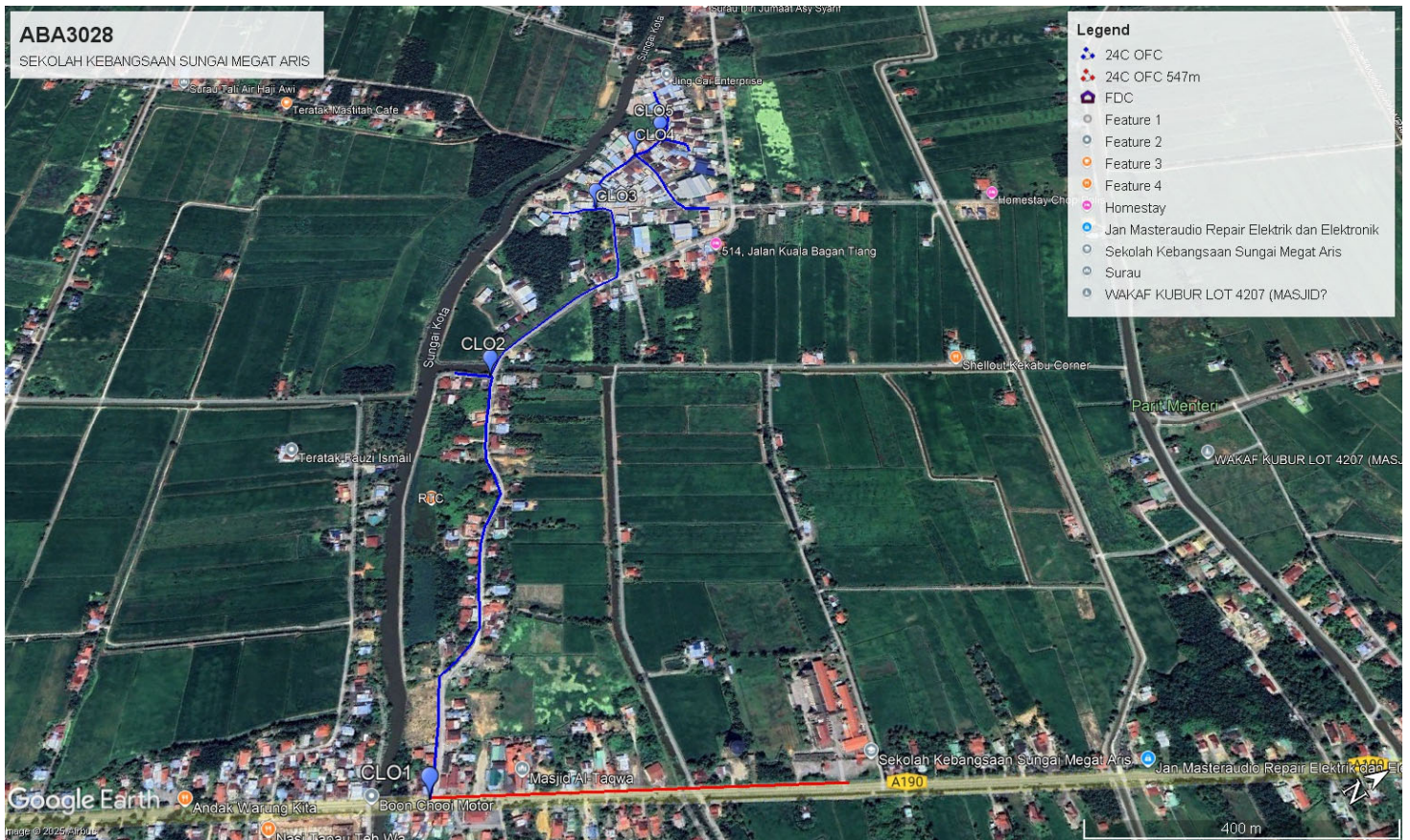
3.1 Overview Site Area (Propose New Pole)



3.2 Proposed FDP and Closure



3.3 Site Plan - KMZ Routing (All Local Authority)



Red Colour - JKR

Road Blue Colour - Majlis Road

3.0 PROPOSED NEW MANHOLE

Proposed New Manhole Coordinate					
No.	Manhole Number	Distance (m)	Latitude	Longitude	Local Authority
1	MH01	-	-	-	-
2	MH02	-	-	-	-

4.0 PROPOSED NEW POLE

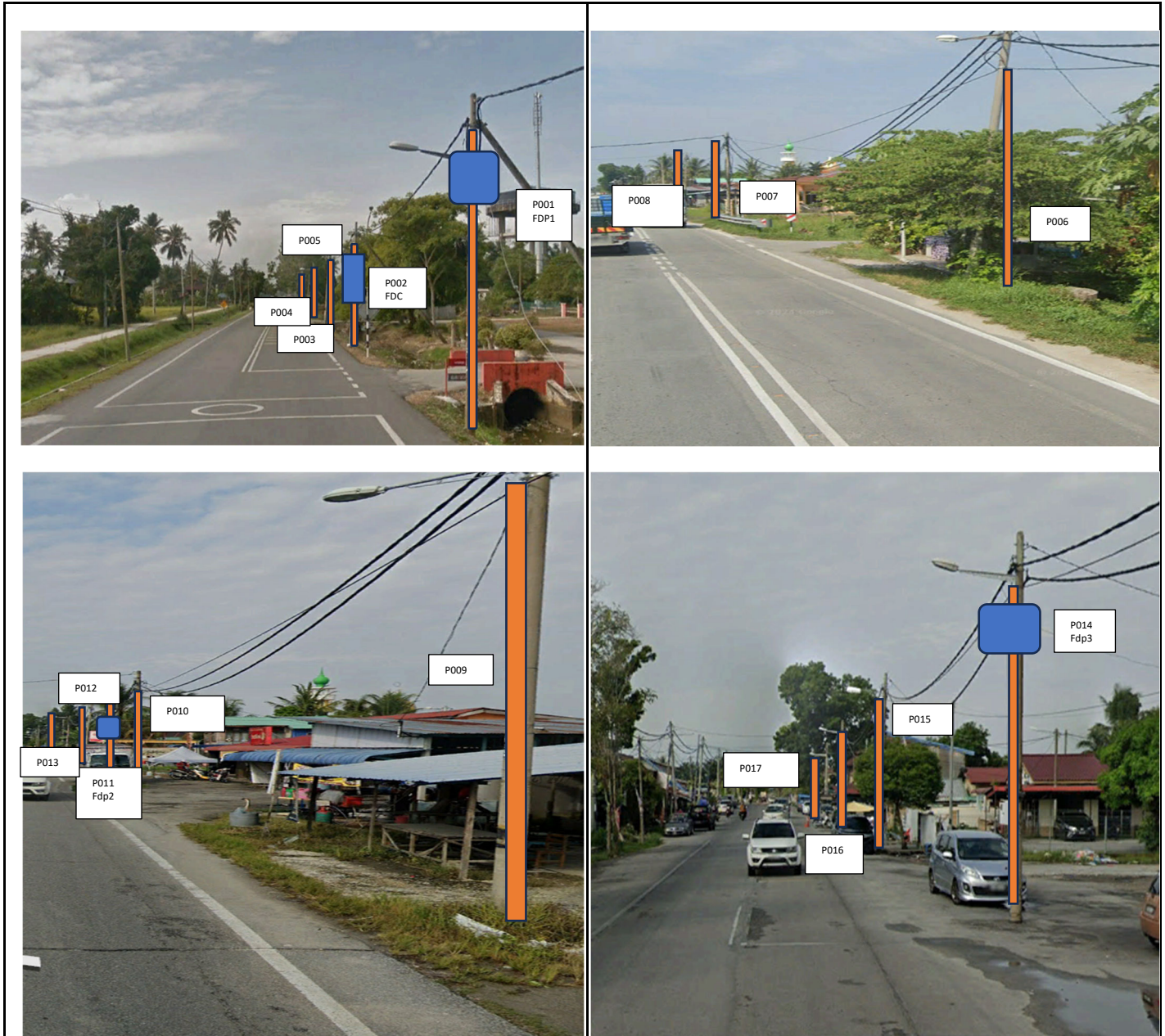
Proposed New Pole Coordinate					
No.	Pole Number	Distance (m)	Latitude	Longitude	Local Authority
1	T001	30M	5.106560	100.409293	JKR Daerah Kerian
2	T002	40M	5.106278	100.409137	JKR Daerah Kerian
3	T003	31M	5.105997	100.408985	JKR Daerah Kerian
4	T004	37M	5.105712	100.408834	JKR Daerah Kerian
5	T005	38M	5.105426	100.408667	JKR Daerah Kerian
6	T006	31M	5.105093	100.408494	JKR Daerah Kerian
7	T007	35M	5.104803	100.408326	JKR Daerah Kerian
8	T008	35M	5.104548	100.408180	JKR Daerah Kerian
9	T009	35M	5.104244	100.408015	JKR Daerah Kerian
10	T010	35M	5.103985	100.407863	JKR Daerah Kerian
11	T011	35M	5.103704	100.407712	JKR Daerah Kerian
12	T012	35M	5.103441	100.407575	JKR Daerah Kerian
13	T013	35M	5.103200	100.407418	JKR Daerah Kerian
14	T014	35M	5.102923	100.407249	JKR Daerah Kerian
15	T015	35M	5.102649	100.407101	JKR Daerah Kerian
16	T016	35M	5.102430	100.407012	JKR Daerah Kerian
17	T017	35M	5.102331	100.406918	JKR Daerah Kerian
18	T018	35M	5.102486	100.406714	Majlis Daerah Kerian
19	T019	35M	5.102551	100.406620	Majlis Daerah Kerian
20	T020	35M	5.102688	100.406386	Majlis Daerah Kerian
21	T021	35M	5.102809	100.406161	Majlis Daerah Kerian
22	T022	35M	5.102912	100.405939	Majlis Daerah Kerian
23	T023	35M	5.103044	100.405684	Majlis Daerah Kerian
24	T024	35M	5.103310	100.405602	Majlis Daerah Kerian
25	T025	35M	5.103554	100.405537	Majlis Daerah Kerian
26	T026	35M	5.103714	100.405406	Majlis Daerah Kerian
27	T027	35M	5.103834	100.405194	Majlis Daerah Kerian
28	T028	35M	5.103932	100.404979	Majlis Daerah Kerian
29	T029	35M	5.104020	100.404812	Majlis Daerah Kerian
30	T030	30M	5.104130	100.404624	Majlis Daerah Kerian
31	T031	35M	5.104233	100.404417	Majlis Daerah Kerian
32	T032	35M	5.104373	100.404250	Majlis Daerah Kerian
33	T033	35M	5.104542	100.404139	Majlis Daerah Kerian

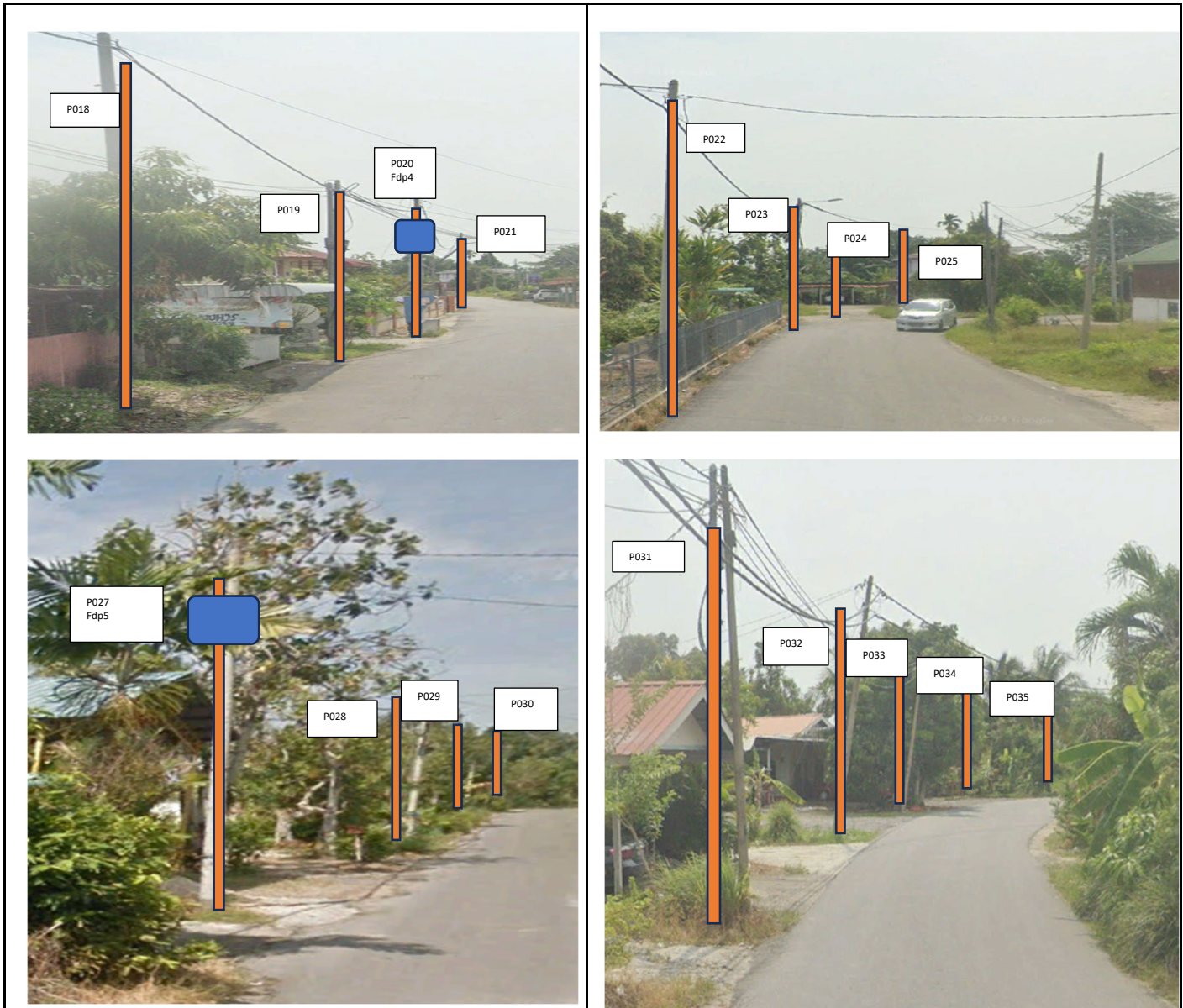
Proposed New Pole Coordinate					
No.	Pole Number	Distance (m)	Latitude	Longitude	Local Authority
34	T034	35M	5.104765	100.403935	Majlis Daerah Kerian
35	T035	35M	5.104830	100.403665	Majlis Daerah Kerian
36	T036	35M	5.104827	100.403419	Majlis Daerah Kerian
37	T037	35M	5.104910	100.403227	Majlis Daerah Kerian
38	T038	35M	5.104992	100.403078	Majlis Daerah Kerian
39	T039	35M	5.105109	100.402876	Majlis Daerah Kerian
40	T040	35M	5.105214	100.402697	Majlis Daerah Kerian
41	T041	35M	5.105348	100.402479	Majlis Daerah Kerian
42	T042	35M	5.105440	100.402319	Majlis Daerah Kerian
43	T043	35M	5.105301	100.402213	Majlis Daerah Kerian
44	T044	35M	5.105173	100.402103	Majlis Daerah Kerian
45	T045	35M	5.105033	100.402002	Majlis Daerah Kerian
46	T046	35M	5.106385	100.401935	Majlis Daerah Kerian
47	T047	35M	5.106691	100.401876	Majlis Daerah Kerian
48	T048	35M	5.107013	100.401814	Majlis Daerah Kerian
49	T049	35M	5.107356	100.401803	Majlis Daerah Kerian
50	T050	35M	5.107688	100.401816	Majlis Daerah Kerian
51	T051	35M	5.107818	100.401632	Majlis Daerah Kerian
52	T052	35M	5.107940	100.401317	Majlis Daerah Kerian
53	T053	35M	5.108094	100.401022	Majlis Daerah Kerian
54	T054	35M	5.108186	100.400779	Majlis Daerah Kerian
55	T055	35M	5.108099	100.400670	Majlis Daerah Kerian
56	T056	35M	5.108006	100.400624	Majlis Daerah Kerian
57	T057	35M	5.107876	100.400565	Majlis Daerah Kerian
58	T058	35M	5.107754	100.400523	Majlis Daerah Kerian
59	T059	35M	5.107616	100.400472	Majlis Daerah Kerian
60	T060	35M	5.107435	100.400339	Majlis Daerah Kerian
61	T061	35M	5.108064	100.400490	Majlis Daerah Kerian
62	T062	35M	5.108157	100.400336	Majlis Daerah Kerian
63	T063	35M	5.108371	100.400200	Majlis Daerah Kerian
64	T064	35M	5.108589	100.400163	Majlis Daerah Kerian
65	T065	35M	5.108820	100.400122	Majlis Daerah Kerian
66	T066	35M	5.108982	100.400064	Majlis Daerah Kerian
67	T067	35M	5.109065	100.400355	Majlis Daerah Kerian
68	T068	35M	5.109091	100.400538	Majlis Daerah Kerian
69	T069	35M	5.109089	100.400696	Majlis Daerah Kerian
70	T070	35M	5.109064	100.400897	Majlis Daerah Kerian
71	T071	35M	5.109071	100.401134	Majlis Daerah Kerian
72	T072	35M	5.109146	100.401313	Majlis Daerah Kerian
73	T073	35M	5.109273	100.401388	Majlis Daerah Kerian
74	T074	35M	5.109438	100.401483	Majlis Daerah Kerian

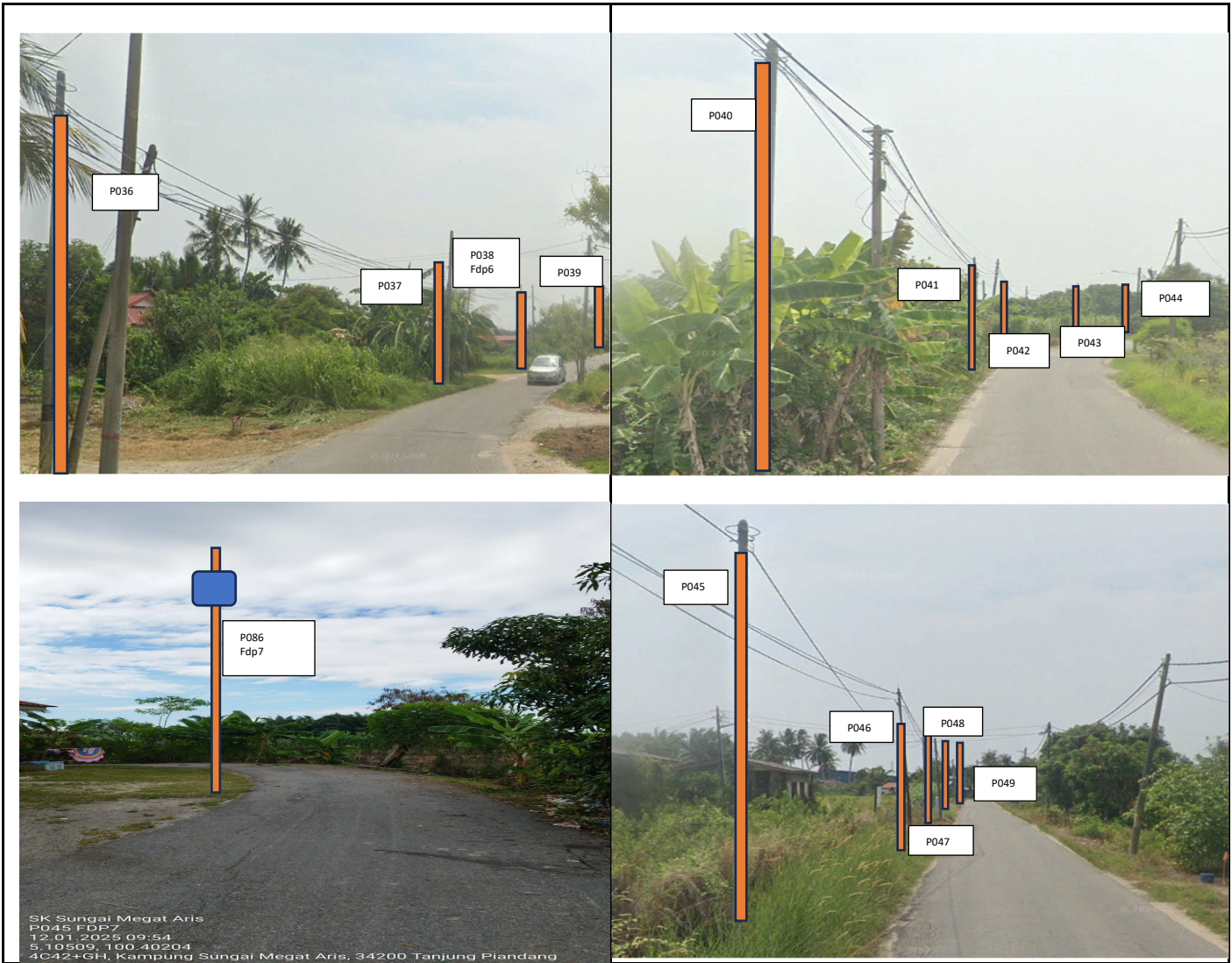
**Proposed New Pole
Coordinate**

No.	Pole Number	Distance (m)	Latitude	Longitude	Local Authority
75	T075	25M	5.109163	100.400091	Majlis Daerah Kerian
76	T076	25M	5.109450	100.400023	Majlis Daerah Kerian
77	T077	25M	5.109658	100.399871	Majlis Daerah Kerian
78	T078	25M	5.109777	100.399680	Majlis Daerah Kerian
79	T079	25M	5.109797	100.399349	Majlis Daerah Kerian
80	T080	25M	5.109832	100.399163	Majlis Daerah Kerian
81	T081	25M	5.109562	100.400082	Majlis Daerah Kerian
82	T082	25M	5.109733	100.400305	Majlis Daerah Kerian
83	T083	25M	5.109714	100.400408	Majlis Daerah Kerian
84	T084	25M	5.105301	100.402213	Majlis Daerah Kerian
85	T085	25M	5.105173	100.402103	Majlis Daerah Kerian
86	T086	25M	5.105033	100.402002	Majlis Daerah Kerian

5.0 SITE PHOTOS - PROPOSED NEW POLE

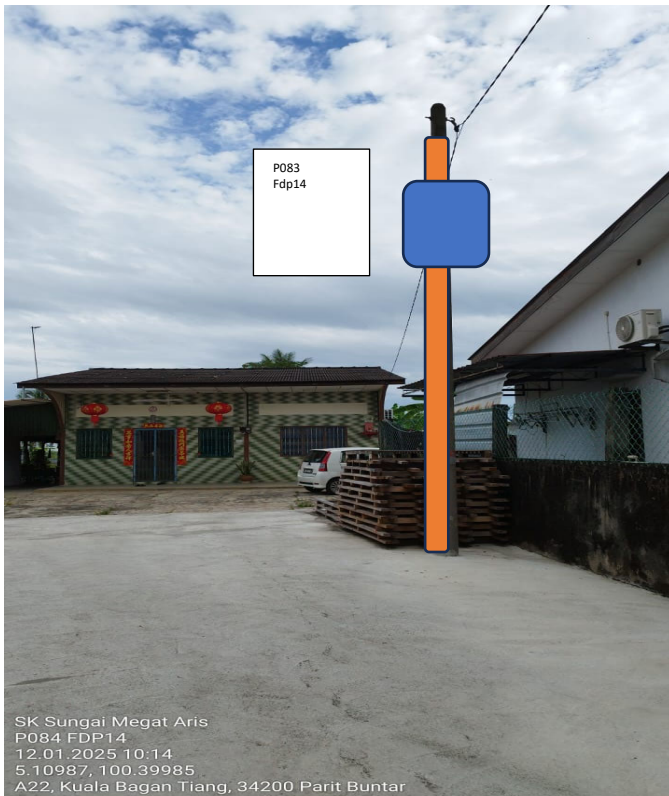






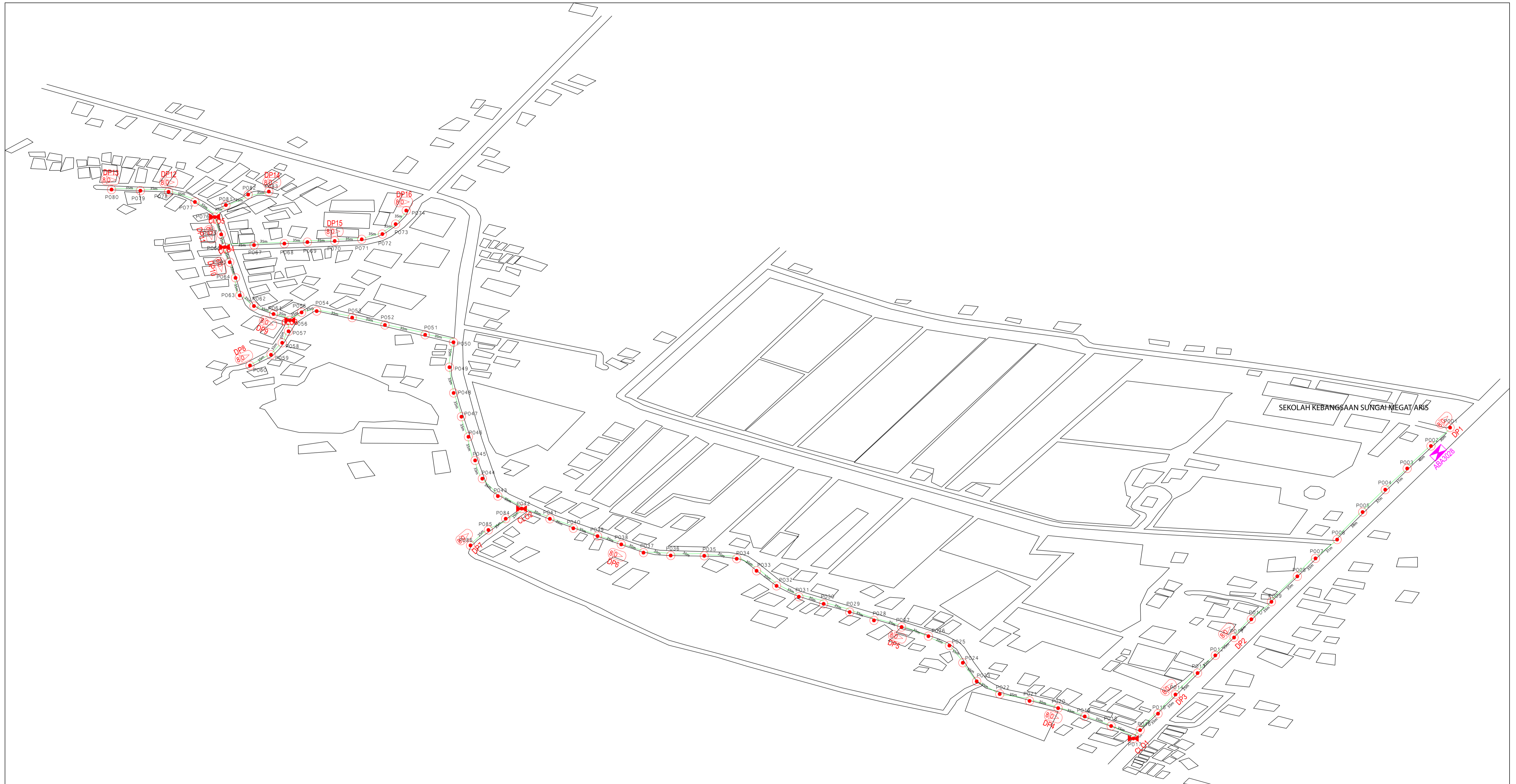


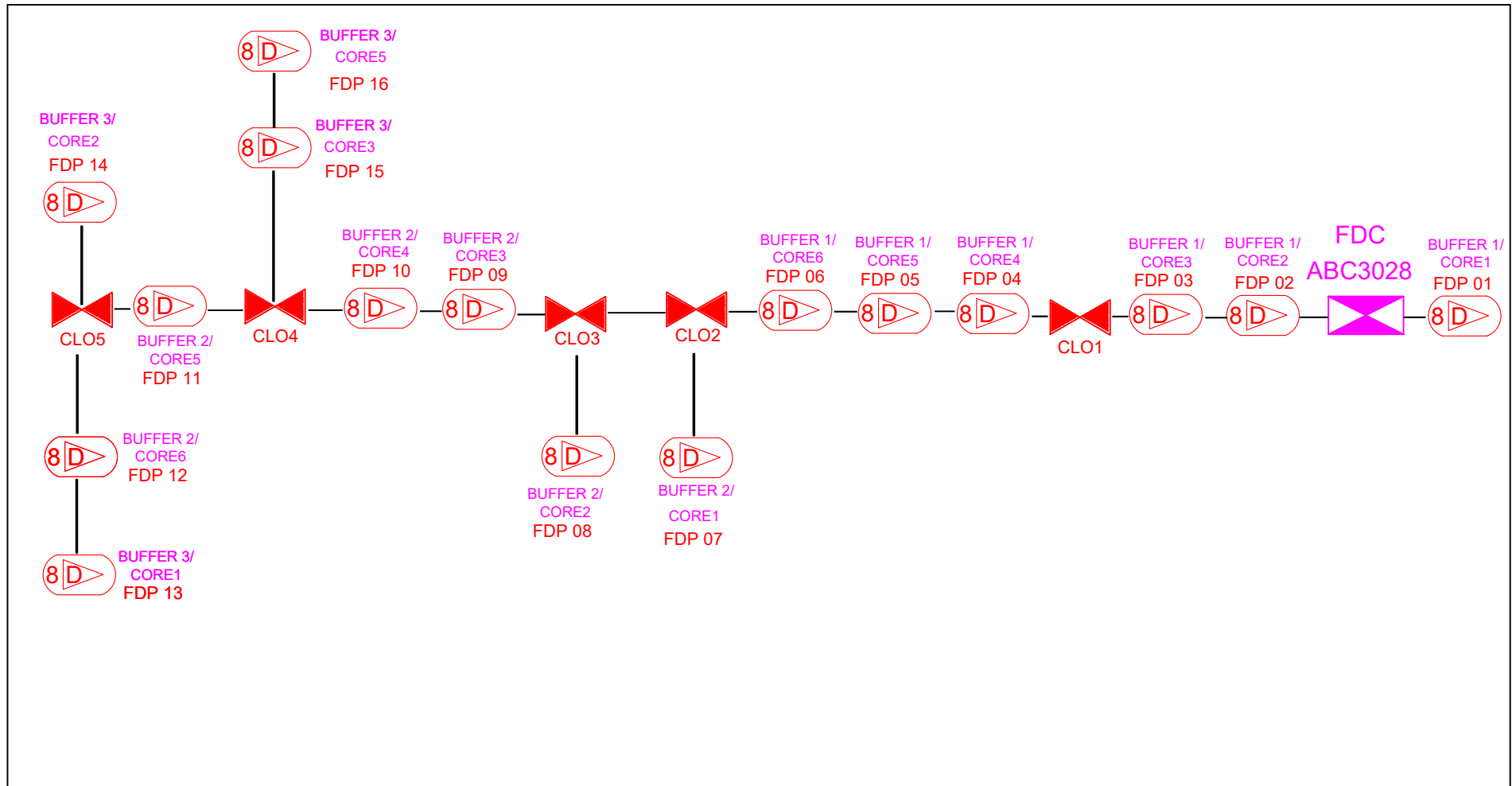




6.0 3rd PARTIES DEPENDENCIES

NO	LOCAL COUNCIL / AUTHORITY	REMARK
1	Majlis Daerah Kerian	1,728m
2	JKR Daerah Kerian	547m





	12C FOC		Installed 1:4 / 1:8 / 1:32 splitter		Installed Pole (9m)		Suspension		New Manhole (PIT)		Micro-Trenching (Meter)		MH NO.
	24C FOC		Installed Patch Cord		Installed Pole (7.5M)		Tension		New Manhole (RC7)		Temporary Infra (Meter)		TNS-1 Existing TNB Pole NO.
	48C FOC		FDC		Installed Pole (6.7M)		Pole Ring		FDP Boundary		Loop / Coil (Meter)		POT1 New Pole NO.
	96C FOC		Closure		Existing TNB Pole		FDP with (1:8) splitter		HDD (Meter)		Active Outdoor Cabinet		CLO1 Closure NO.
	144C FOC		Existing Closure		Installed Riser		Existing Manhole		Open Cut (Meter)		FDC NO.		DPT1 FDP NO.

ACTUAL HOMEPASS :

KEY PLAN:	PROJECT OWNER: 	MAIN CONTRACTOR: PRIVASAT	SUB-CONTRACTOR: 	PROJECT TITLE: ABA3028 SEKOLAH KEBANGSAAN SUNGAI MEGAT ARIS	DRAWING TITLE: CORE ASSIGNMENT DRAWING	Design By : Date : 2024
					PROJECT PHASE: POP 2	Scale : 1 : 5000
						Job Number :
						Sheet : 1 / 1
						Size : A1