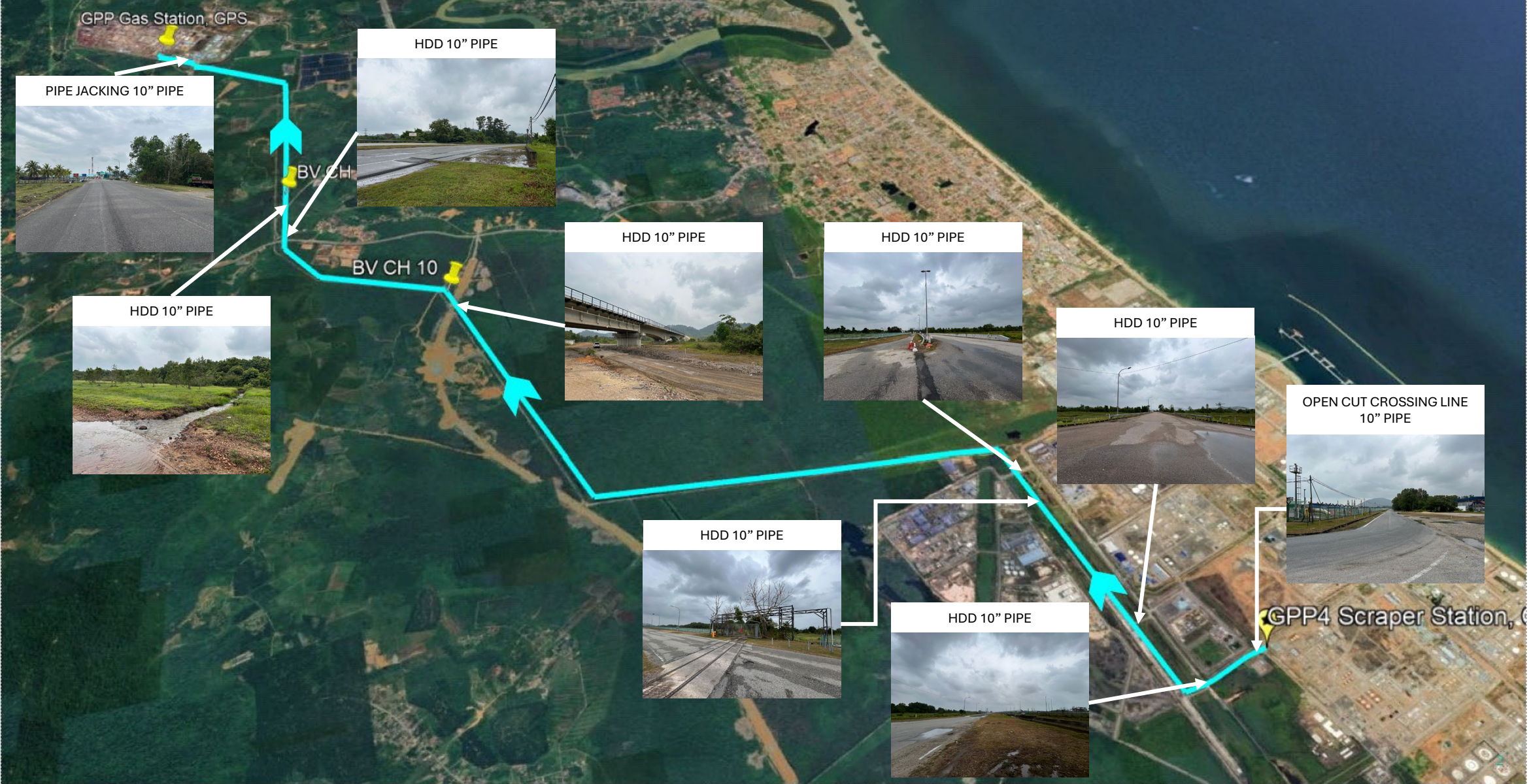


NPS 10 FEED CONDENSATE PIPELINE FROM GPP4 SCRAPER STATION AT GAS PROCESSING KERTEH (GPK) TO GPPB SCRAPER STATION AT GAS PROCESSING SANTUNG (GPS) – 15.1KM



NOTES:
 1. THE KP'S (KILOMETER PIPELINE) / CH (CHAINAGE) MENTIONED IN THE DRAWING ARE INDICATIVE ONLY. CONTRACTOR SHALL VERIFY AND CONFIRM ACTUAL KP'S / CH DURING EPCC STAGE.

REVISION			APPROVALS			
REV.	DATE	DESCRIPTIONS	DRAWN	CHK'D	REV'D	APP'D
0	22.04.24	ISSUED FOR ITB	<i>Effendy</i>	<i>Zaf</i>	<i>MSM</i>	<i>MSAS</i>

ENGINEERED BY:
PETRONAS
 PETRONAS TECHNICAL SERVICES SDN BHD
 PLANT CHANGE DELIVERY- PETRONAS GAS BERHAD (347848-X)
 GAS TRANSMISSION & REGASIFICATION
 LEVEL 49, PETRONAS TOWER 3,
 KUALA LUMPUR CITY CENTRE
 50088 KUALA LUMPUR
 MALAYSIA

PROJECT OWNER:
PETRONAS
 PETRONAS GAS BERHAD (1103671-X)
 SEGAMAT OPERATION CENTRE
 GAS TRANSMISSION & REGASIFICATION
 KM 10, LEBUHRAYA SEGAMAT - KUANTAN
 85000 SEGAMAT
 JOHOR DARUL TAKZIM
 MALAYSIA

ENGINEERING, PROCUREMENT, CONSTRUCTION, COMMISSIONING (EPCC) OF KERTIH REJUVENATION PROJECT (KREJUV) FOR PETRONAS GAS BERHAD (PGB)

DRAWING TITLE:
FEED CONDENSATE PIPELINE REPLACEMENT ROUTE MAP

PAPER SIZE: A3
DRAWING NO.: KREJUV-FEC-FEL3-PLF-DMP-001
SHEET: 1 OF 1
REV.: 0