

TECHNICAL PROPOSAL

POP2 AEA3087 SEKOLAH MENENGAH KEBANGSAAN KUALA KURAU (D-SIDE)

Company Name	:	SEGALA DELIMA (M) SDN BHD
Company Address	:	No. 8, Jalan Ampang Baru 6B, Pusat Perdagangan Baru, 31350 Ipoh, Perak
Prepared By	:	Nasrohaizan Bin Mustaffa
Date	:	28/1/2025



Point A



Point B

Starting Point

Site / Boundary Name	:	SEKOLAH MENENGAH KEBANGSAAN KUALA KURAU
District	:	KUALA KURAU
Postcode	:	34350
State	:	PERAK
GPS Coordinate	:	5.019900 , 100.411668
LRD	:	A

End Point

Site / Boundary Name	:	BAN PECAH
Address	:	JALAN TEPI TALI AIR
District	:	KUALA KURAU
Postcode	:	34500
State	:	PERAK
GPS Coordinate	:	5.020379 , 100.401106
LRD	:	B

1.0 WORK SUMMARY

NO	PROPOSED DISTANCE AND METHOD	UNIT	QUANTITY
1	Horizontal Directional Drilling (HDD)	m	0
2	Carriage Way Open Trench(CW)	m	0
3	Grass Verge Open Trenching (GV)	m	0
4	Micro Trenching (MT)	m	0
Total			0

NO	OTHER INFORMATION	UNIT	QUANTITY
1	Installation of Short Span ADSS Fiber Cables	m	2790
2	Install New Pole	ea	76
3	Install New JRC7 Manhole	ea	0
4	Install GI Riser 100mm	ea	0
5	Install Fiber Distribution Point and Closure (Splicing, Termination and Testing)	ea	13
6	Estimated Time Required for Completion	days	30

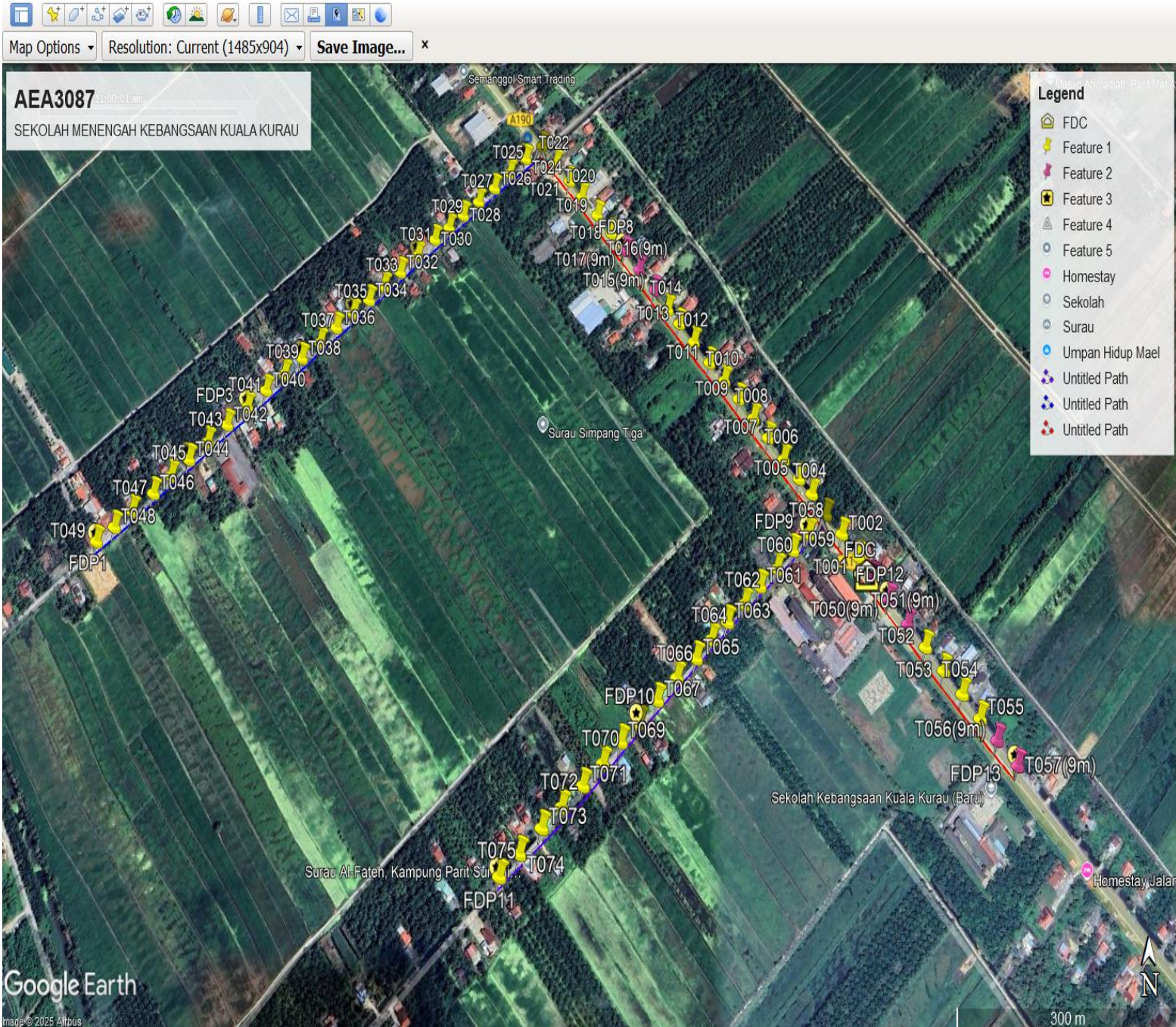
2.0 LOCAL AUTHORITY SUMMARY

Daerah Batu Gajah

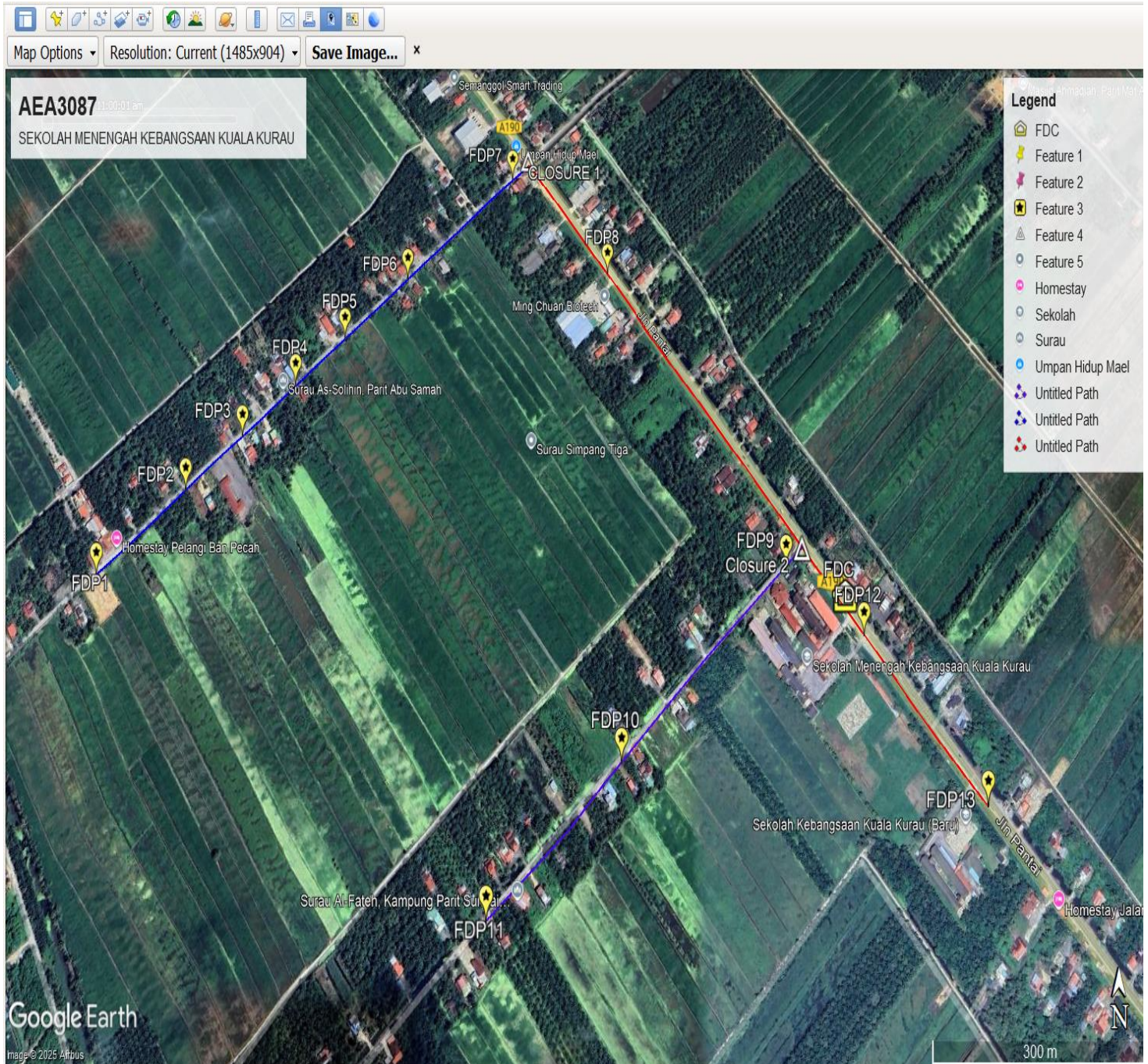
NO	ITEMS	Owner	Quantity	Distance (m)
1	HDD	JKR	-	-
		Majlis	-	-
		Estate / Private Land	-	-
2	New Pole	JKR	32	1200m
		Majlis	44	1590m
		Estate / Private Land	-	-
Total Distance (m)				2790m

3.0 SITE PLAN (KMZ)

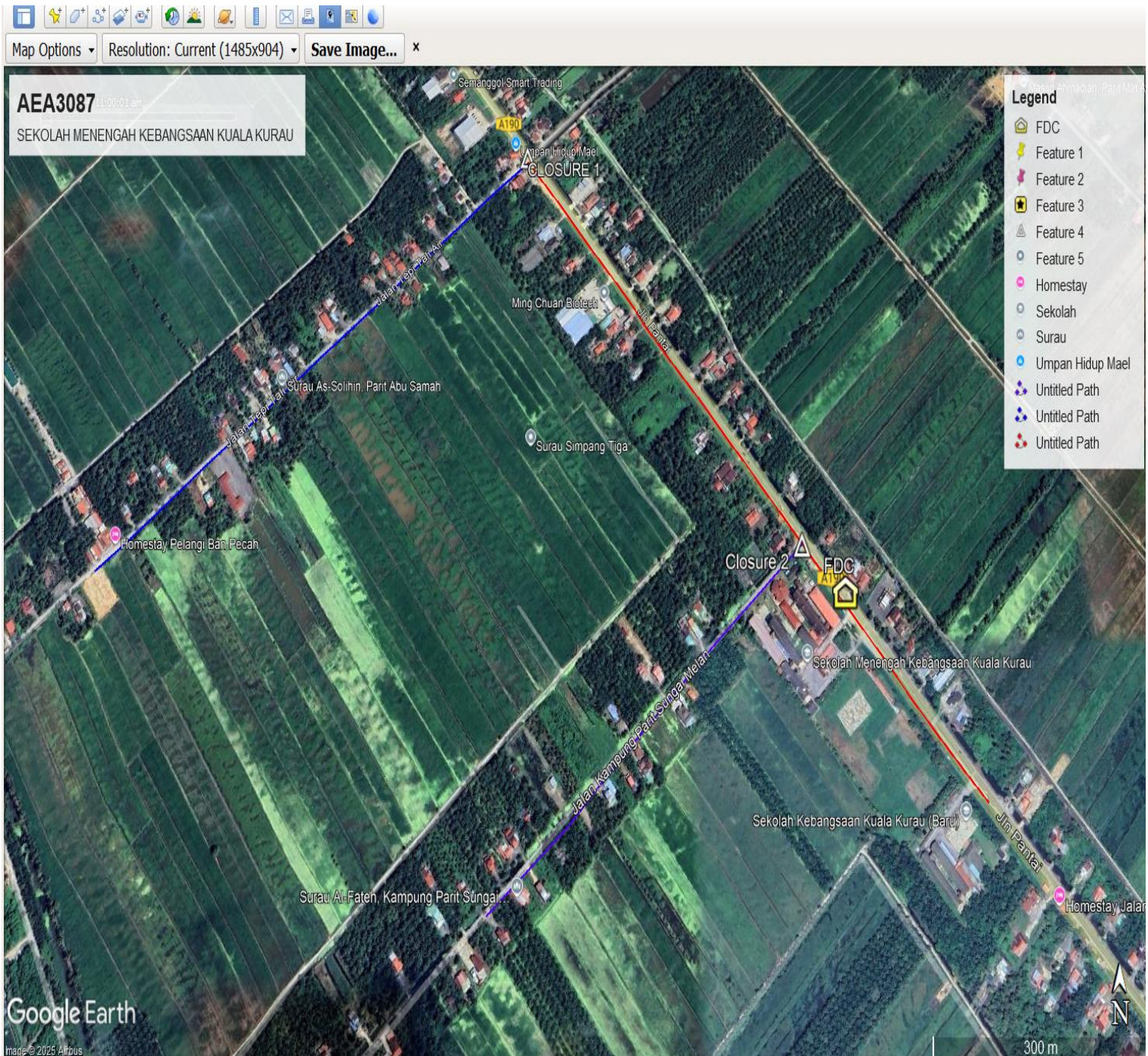
3.1 Overview Site Area (Propose New Pole)



3.2 Proposed FDP and Closure



3.3 Site Plan - KMZ Routing (All Local Authority)



Red Colour - JKR Road
Blue Colour - Majlis Road

4.0 PROPOSED NEW MANHOLE

(N/A)

Proposed New Manhole Coordinate					
No.	Manhole Number	Distance (m)	Latitude	Longitude	Local Authority
1	MH01	-	-	-	-
2	MH02	-	-	-	-

4.1 PROPOSED NEW POLE

Proposed New Pole Coordinate					
No.	Pole Number	Distance (m)	Latitude	Longitude	Local Authority
0	T000(9m)	35m	5.019831	100.411755	JKR Daerah Kerian
1	T001	35m	5.020057	100.411591	JKR Daerah Kerian
2	T002	35m	5.020321	100.411381	JKR Daerah Kerian
3	T003	35m	5.020539	100.411177	JKR Daerah Kerian
4	T004	35m	5.020778	100.410998	JKR Daerah Kerian
5	T005	35m	5.020955	100.410830	JKR Daerah Kerian
6	T006	35m	5.021180	100.410626	JKR Daerah Kerian
7	T007	35m	5.021432	100.410419	JKR Daerah Kerian
8	T008	35m	5.021664	100.410222	JKR Daerah Kerian
9	T009	35m	5.021899	100.410022	JKR Daerah Kerian
10	T010	35m	5.022119	100.409821	JKR Daerah Kerian
11	T011	35m	5.022355	100.409615	JKR Daerah Kerian
12	T012	35m	5.022625	100.409396	JKR Daerah Kerian
13	T013	35m	5.022860	100.409186	JKR Daerah Kerian
14	T014	35m	5.023106	100.408976	JKR Daerah Kerian
15	T015(9m)	35m	5.023361	100.408774	JKR Daerah Kerian
16	T016(9m)	35m	5.023573	100.408593	JKR Daerah Kerian
17	T017(9m)	35m	5.023835	100.408380	JKR Daerah Kerian
18	T018	35m	5.024088	100.408178	JKR Daerah Kerian
19	T019	35m	5.024345	100.407959	JKR Daerah Kerian
20	T020	35m	5.024600	100.407716	JKR Daerah Kerian
21	T021	35m	5.024825	100.407524	JKR Daerah Kerian
22	T022	35m	5.025083	100.407305	JKR Daerah Kerian
23	T023	35m	5.025339	100.407080	JKR Daerah Kerian
24	T024	35m	5.025140	100.406828	Majlis Daerah Kerian
25	T025	35m	5.024924	100.406581	Majlis Daerah Kerian
26	T026	35m	5.024708	100.406344	Majlis Daerah Kerian
27	T027	35m	5.024522	100.406104	Majlis Daerah Kerian
28	T028	35m	5.024334	100.405872	Majlis Daerah Kerian
29	T029	35m	5.024163	100.405661	Majlis Daerah Kerian
30	T030	35m	5.023994	100.405448	Majlis Daerah Kerian
31	T031	35m	5.023773	100.405198	Majlis Daerah Kerian

32	T032	35m	5.023553	100.404948	Majlis Daerah Kerian
33	T033	35m	5.023359	100.404713	Majlis Daerah Kerian
34	T034	35m	5.023176	100.404505	Majlis Daerah Kerian
35	T035	35m	5.023003	100.404280	Majlis Daerah Kerian
36	T036	35m	5.022810	100.404048	Majlis Daerah Kerian
37	T037	35m	5.022621	100.403823	Majlis Daerah Kerian
38	T038	35m	5.022418	100.403574	Majlis Daerah Kerian
39	T039	35m	5.022221	100.403338	Majlis Daerah Kerian
40	T040	35m	5.022021	100.403092	Majlis Daerah Kerian
41	T041	35m	5.021805	100.402850	Majlis Daerah Kerian
42	T042	35m	5.021581	100.402592	Majlis Daerah Kerian
43	T043	35m	5.021373	100.402342	Majlis Daerah Kerian
44	T044	35m	5.021169	100.402102	Majlis Daerah Kerian
45	T045	35m	5.020979	100.401874	Majlis Daerah Kerian
46	T046	35m	5.020777	100.401654	Majlis Daerah Kerian
47	T047	35m	5.020573	100.401391	Majlis Daerah Kerian
48	T048	35m	5.020386	100.401177	Majlis Daerah Kerian
49	T049	35m	5.020215	100.400965	Majlis Daerah Kerian
50	T050(9m)	35m	5.019589	100.411955	JKR Daerah Kerian
51	T051(9m)	35m	5.019320	100.412172	JKR Daerah Kerian
52	T052	35m	5.019081	100.412390	JKR Daerah Kerian
53	T053	35m	5.018836	100.412603	JKR Daerah Kerian
54	T054	35m	5.018593	100.412819	JKR Daerah Kerian
55	T055	35m	5.018343	100.413018	JKR Daerah Kerian
56	T056(9m)	35m	5.018119	100.413203	JKR Daerah Kerian
57	T057(9m)	35m	5.017868	100.413430	JKR Daerah Kerian
56	T056	35m	5.020323	100.410915	JKR Daerah Kerian
57	T057	35m	5.020130	100.410677	JKR Daerah Kerian
58	T058	35m	5.019924	100.410441	Majlis Daerah Kerian
59	T059	35m	5.019722	100.410188	Majlis Daerah Kerian
60	T060	35m	5.019528	100.409963	Majlis Daerah Kerian
61	T061	35m	5.019330	100.409720	Majlis Daerah Kerian
62	T062	35m	5.019145	100.409494	Majlis Daerah Kerian
63	T063	35m	5.018945	100.409278	Majlis Daerah Kerian
64	T064	35m	5.018742	100.409011	Majlis Daerah Kerian
65	T065	35m	5.018513	100.408742	Majlis Daerah Kerian
66	T066	35m	5.018292	100.408501	Majlis Daerah Kerian
67	T067	35m	5.018096	100.408257	Majlis Daerah Kerian
68	T068	35m	5.017880	100.408018	Majlis Daerah Kerian
69	T069	35m	5.017665	100.407758	Majlis Daerah Kerian
70	T070	35m	5.017459	100.407484	Majlis Daerah Kerian
71	T071	35m	5.017261	100.407231	Majlis Daerah Kerian
72	T072	35m	5.017019	100.406954	Majlis Daerah Kerian
73	T073	35m	5.016807	100.406705	Majlis Daerah Kerian
74	T074	35m	5.019831	100.411755	Majlis Daerah Kerian

75	T075	35m	5.020057	100.411591	Majlis Daerah Kerian
----	------	-----	----------	------------	----------------------

Type	7.5m	9m	Total
No of pole	68	8	76

**5.0 SITE PHOTOS - PROPOSED HDD AND NEW MANHOLE
(N/A)**

6.0 SITE PHOTOS - PROPOSED NEW POLE









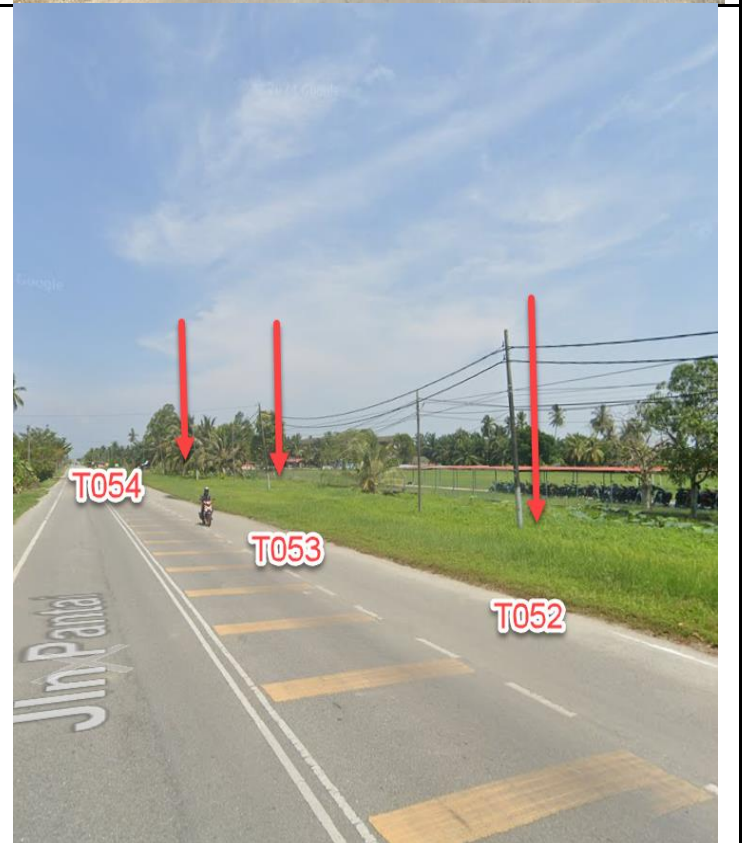
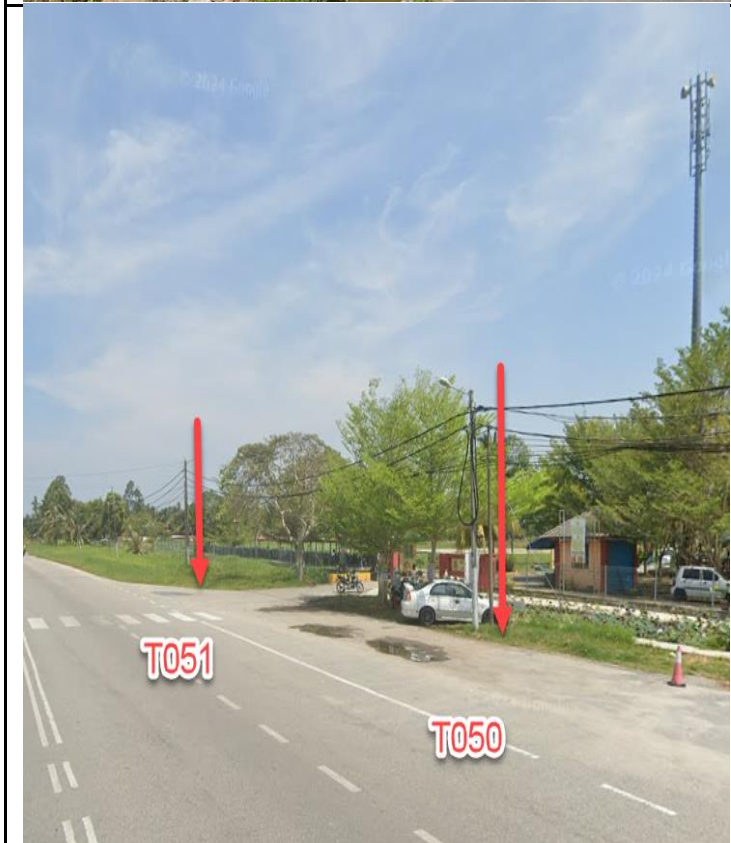
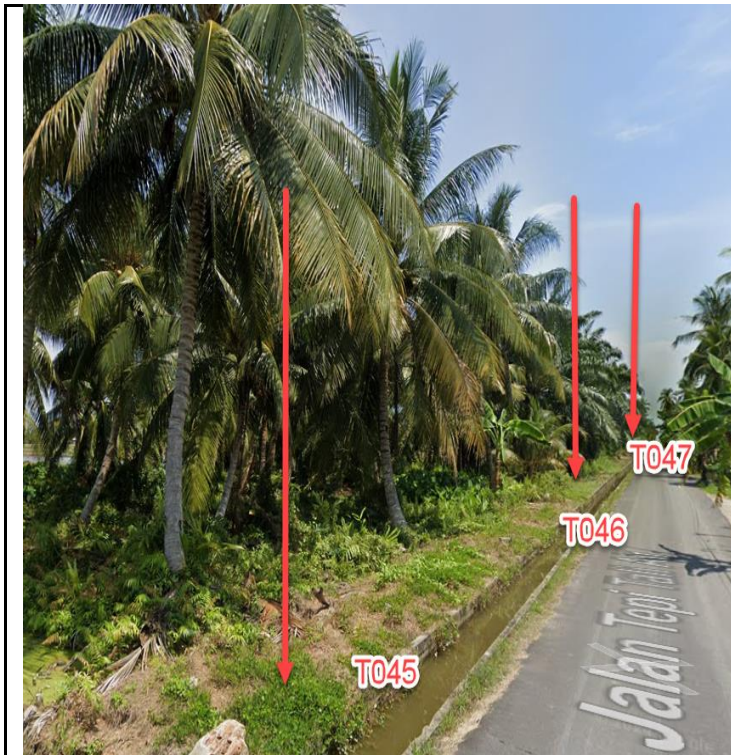


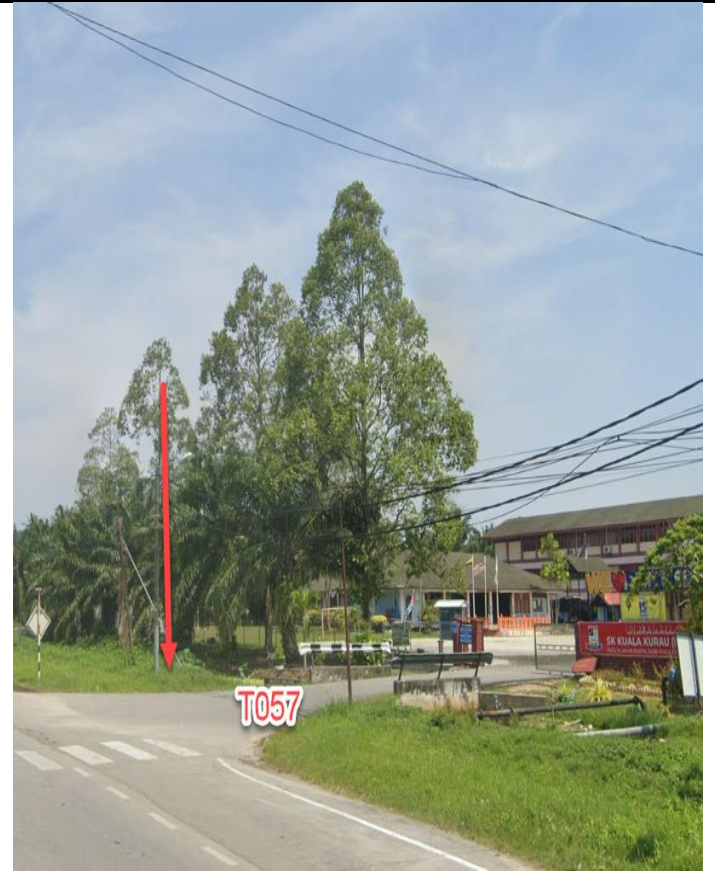
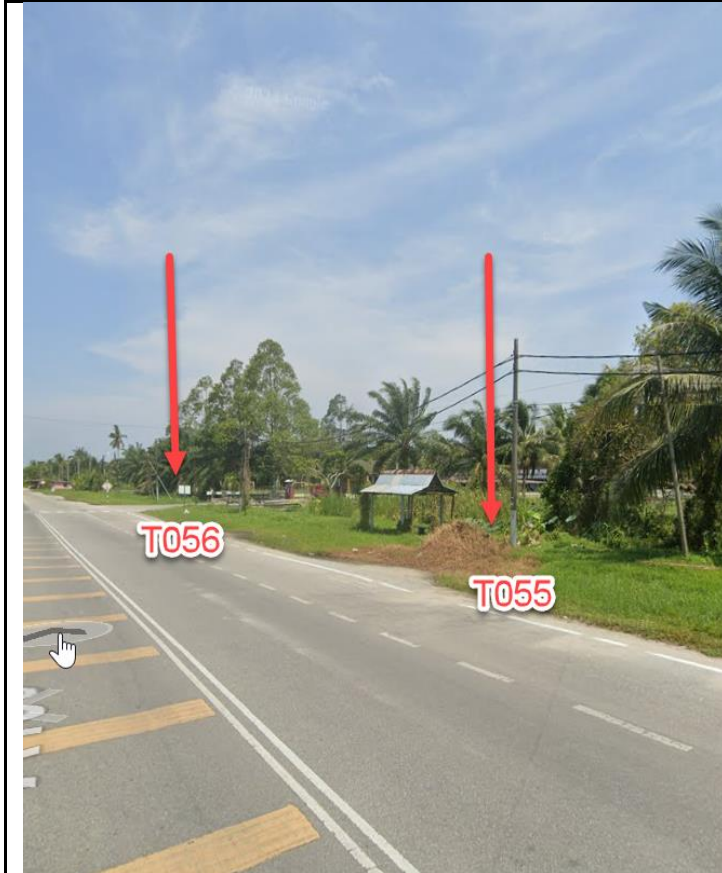




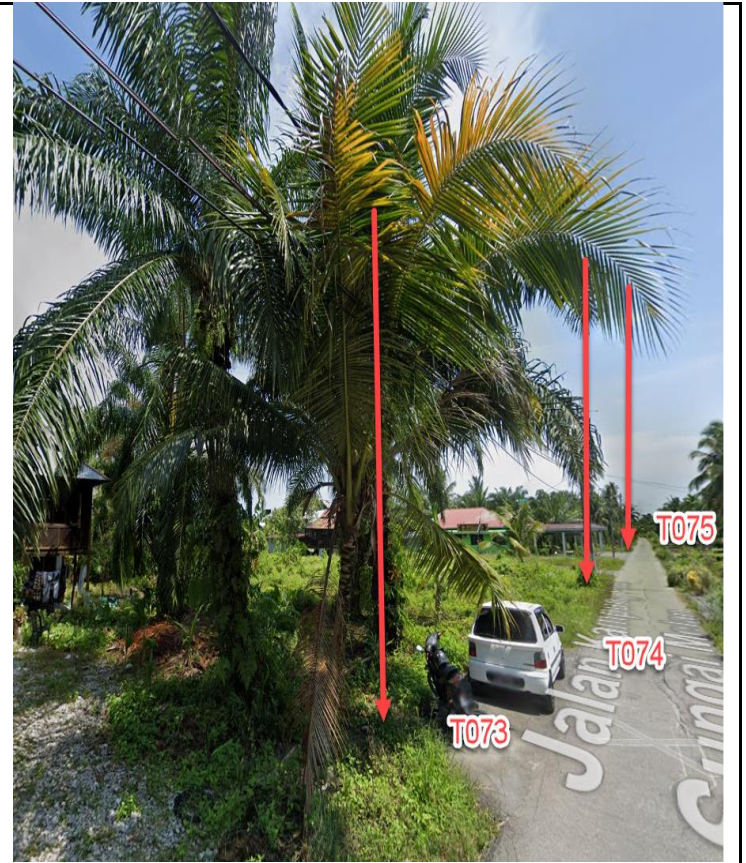












NO	LOCAL COUNCIL / AUTHORITY	REMARK
1	Majlis Daerah Kerian	1590m
2	JKR Daerah Kerian	1200m

