

TECHNICAL PROPOSAL **ABA4015 SEKOLAH KEBANGSAAN KATI** **(D-SIDE)**

Company Name : ARATIMUR SDN BHD
Company Address : A-08-13, 8th Floor, Block A, Radia Office, Persiaran Singgahsana, 40150 Bukit Jelutong, Shah Alam, Selangor
Prepared By : Khairul Tajuddin
Date : 18/02/2025



Starting Point
 Site / Boundary Name : Sekolah Kebangsaan Kati
 Address : Jalan Besar Kati
 District : Kuala Kangsar
 Postcode : 33020
 State : Perak
 GPS Coordinate : 4.879635, 100.904883
 LRD : A

End Point
 Site / Boundary Name : Dewan Syed Ahmad
 Address : Kampung Berala,
 District : Kuala Kangsar
 Postcode : 33020
 State : Perak
 GPS Coordinate : 4.87494, 100.925290
 LRD : B



**PROJEK PENYEDIAAN DAN PENYELENGGARAAN POINT OF PRESENCE (POP)
 FASA 2: HAB INFRASTRUKTUR GENTIAN OPTIK BERHAMPIRAN DENGAN
 SEKOLAH, KAWASAN PERINDUSTRIAN, PREMIS KERAJAAN DAN KOMUNITI
 SEKITARNYA OLEH KEMENTERIAN KOMUNIKASI MALAYSIA - ZON UTARA
 (KKMM.400-11/17/132(1))**



1.0 WORK SUMMARY

| NO | PROPOSED DISTANCE AND METHOD | UNIT | QUANTITY |
|----|---------------------------------------|------|-----------|
| 1 | Horizontal Directional Drilling (HDD) | m | 60 |
| 2 | Carriage Way Open Trench (CW) | m | 0 |
| 3 | Grass Verge Open Trenching (GV) | m | 0 |
| 4 | Micro Trenching (MT) | m | 0 |
| | Total | | 60 |

| NO | OTHER INFORMATION | UNIT | QUANTITY |
|----|---|------|----------|
| 1 | Installation of Short Span ADSS Fibre Cables | m | 3628 |
| 2 | Install New Pole | ea | 107 |
| 3 | Install New JRC7 Manhole | ea | 4 |
| 4 | Install GI Riser 100mm | ea | 4 |
| 5 | Install Fiber Distribution Point and Closure (Splicing, Termination and Testing | ea | 18 |
| 6 | Estimated Time Required For Completion | days | 30 |



**PROJEK PENYEDIAAN DAN PENYELENGGARAAN POINT OF PRESENCE (POP)
 FASA 2: HAB INFRASTRUKTUR GENTIAN OPTIK BERHAMPIRAN DENGAN
 SEKOLAH, KAWASAN PERINDUSTRIAN, PREMIS KERAJAAN DAN KOMUNITI
 SEKITARNYA OLEH KEMENTERIAN KOMUNIKASI MALAYSIA - ZON UTARA
 (KKMM.400-11/17/132(1))**



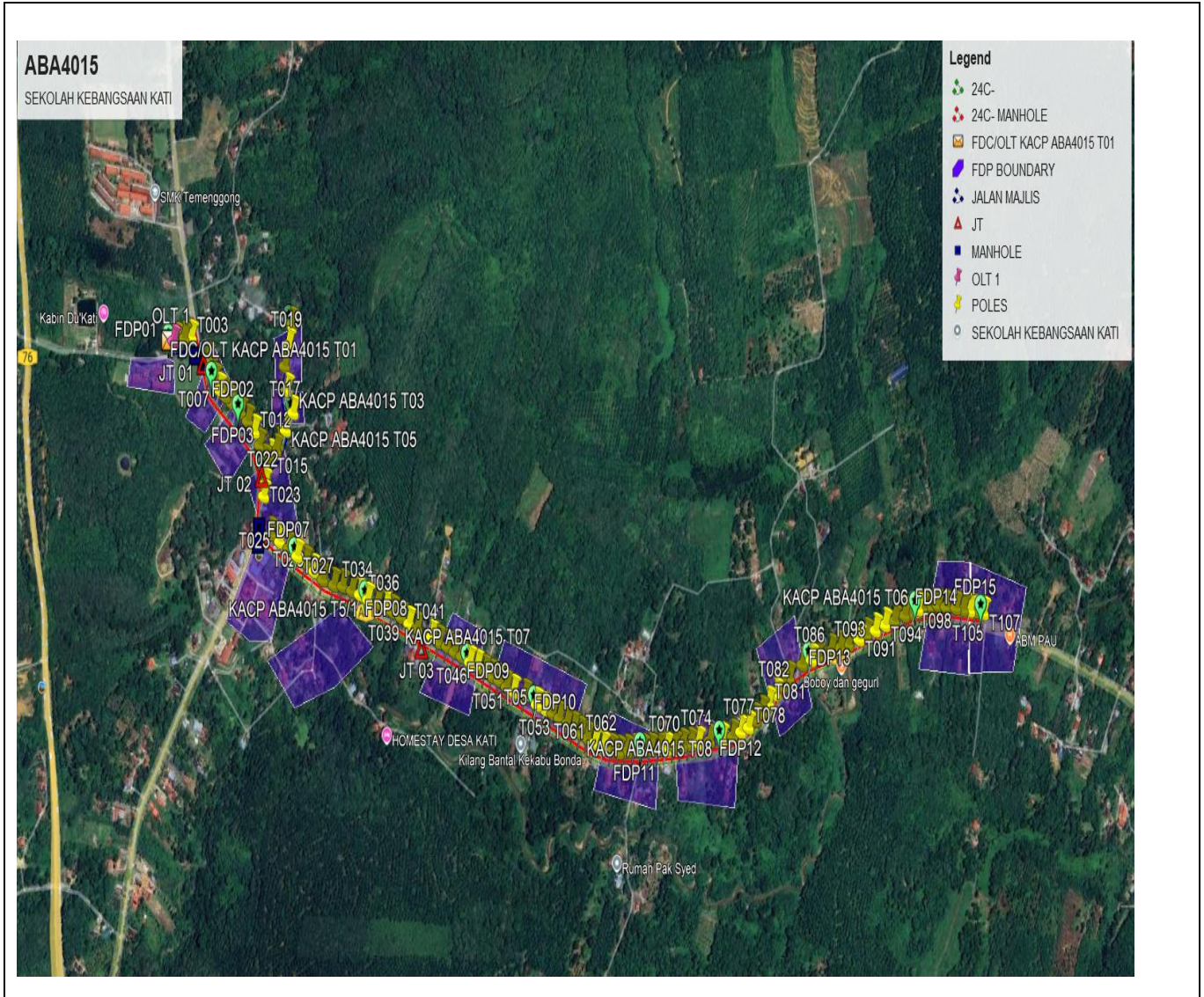
2.0 LOCAL AUTHORITY SUMMARY

Daerah Kuala Kangsar

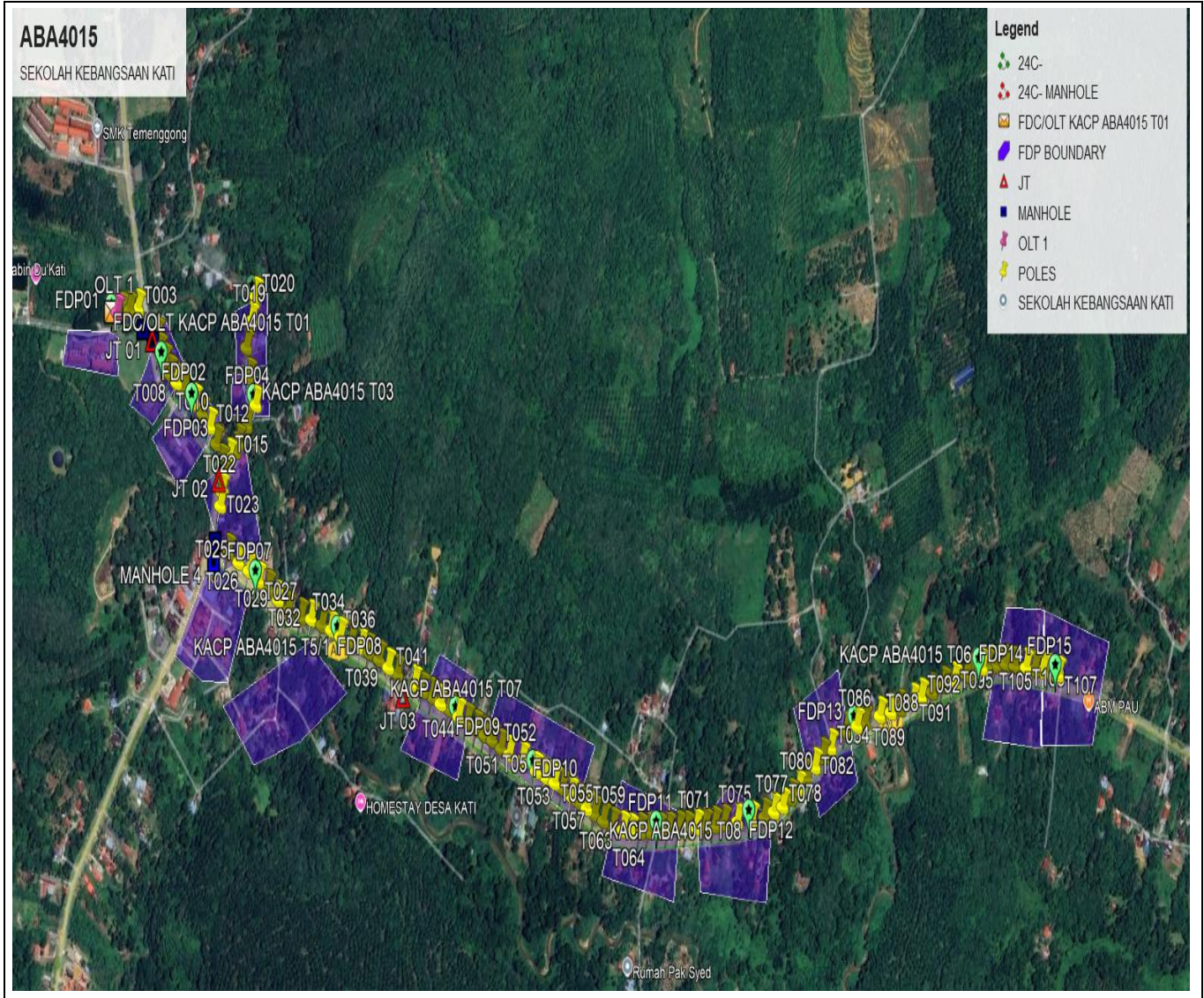
| NO | ITEMS | OWNER | QUANTITY | DISTANCE (m) |
|---------------------------|----------|-----------------------|----------|--------------|
| 1 | HDD | JKR | 2 | 60 |
| | | Majlis | - | - |
| | | Estate / Private Land | - | - |
| 2 | New Pole | JKR | 97 | 491 |
| | | Majlis | 10 | 3077 |
| | | Estate / Private Land | - | - |
| Total distance (m) | | | | 3628m |

3.0 SITE PLAN- KMZ

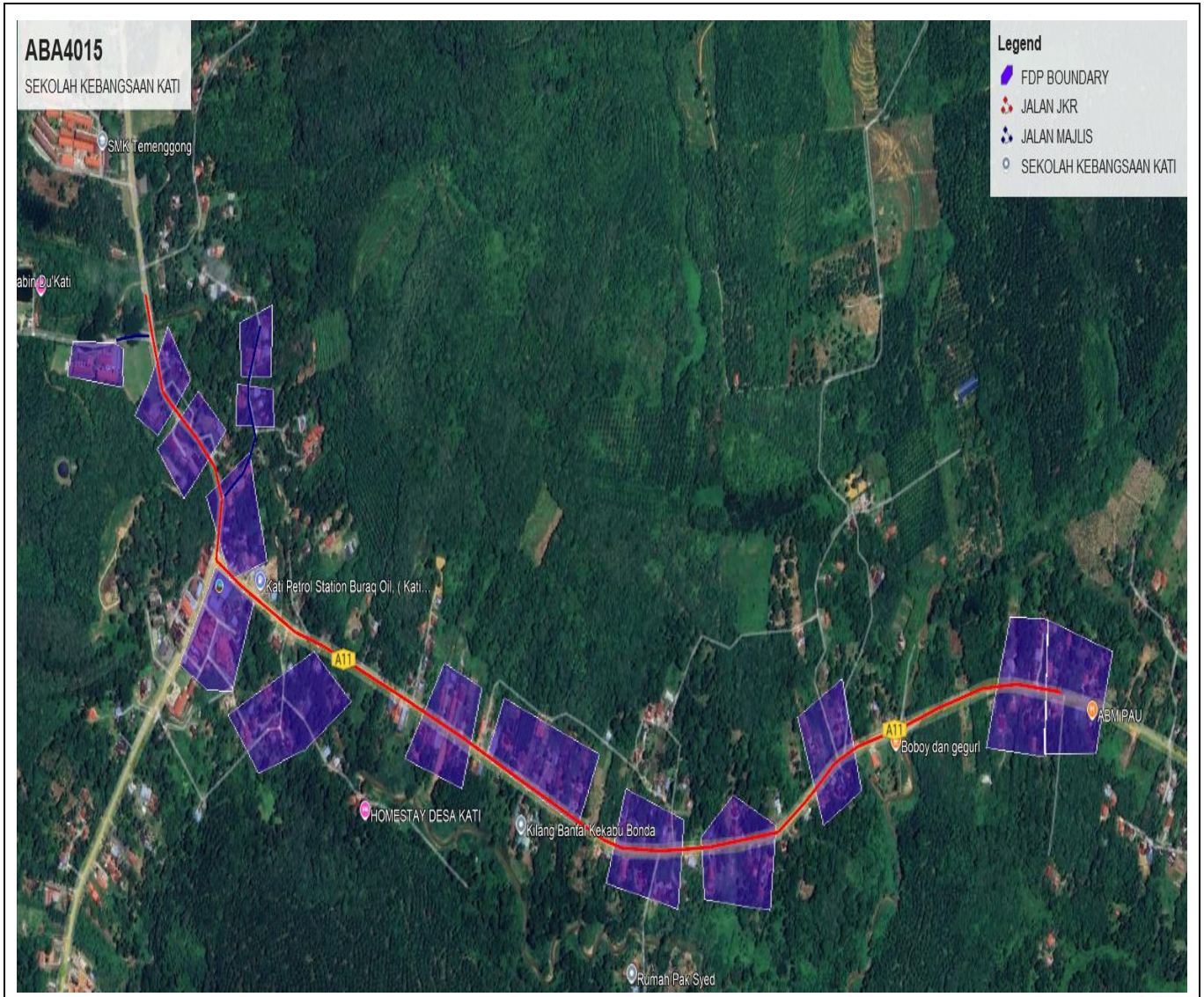
3.1 Overview Site Area



3.2 Site Boundry



3.3 Road Boundry



4.0 PROPOSED MANHOLE & HDD AND NEW POLE

| No. | Pole & Manhole ID | Distance | Latitude | Longitude | Local Authority |
|-----|--------------------------|----------|----------|------------|----------------------------------|
| 1 | KACP ABA4015 T02 | | 4.879624 | 100.904838 | MAJLIS PERBANDARAN KUALA KANGSAR |
| 2 | FDC/OLT KACP ABA4015 T01 | 7 | 4.879635 | 100.904883 | MAJLIS PERBANDARAN KUALA KANGSAR |
| 3 | T001 | 14 | 4.879656 | 100.905008 | MAJLIS PERBANDARAN KUALA KANGSAR |
| 4 | T002 | 17 | 4.879674 | 100.905159 | MAJLIS PERBANDARAN KUALA KANGSAR |
| 5 | T003 | 21 | 4.879696 | 100.905344 | MAJLIS PERBANDARAN KUALA KANGSAR |
| 6 | MANHOLE 1 | 21 | 4.879660 | 100.905534 | JKR KUALA KANGSAR |
| 7 | MANHOLE 2 | 100 | 4.879511 | 100.905750 | JKR KUALA KANGSAR |
| 8 | T004 | 16 | 4.879345 | 100.905755 | JKR KUALA KANGSAR |
| 9 | T005 | 26 | 4.879136 | 100.905816 | JKR KUALA KANGSAR |
| 10 | T006 | 20 | 4.879004 | 100.905926 | JKR KUALA KANGSAR |
| 11 | T007 | 22 | 4.878846 | 100.906043 | JKR KUALA KANGSAR |
| 12 | T008 | 21 | 4.878738 | 100.906189 | JKR KUALA KANGSAR |
| 13 | T009 | 22 | 4.878635 | 100.906353 | JKR KUALA KANGSAR |
| 14 | T010 | 32 | 4.878470 | 100.906590 | JKR KUALA KANGSAR |
| 15 | T011 | 25 | 4.878330 | 100.906761 | JKR KUALA KANGSAR |
| 16 | T012 | 26 | 4.878164 | 100.906918 | JKR KUALA KANGSAR |
| 17 | T013 | 30 | 4.877947 | 100.907048 | JKR KUALA KANGSAR |
| 18 | T014 | 32 | 4.877692 | 100.907158 | JKR KUALA KANGSAR |
| 19 | T015 | 20 | 4.877768 | 100.907320 | MAJLIS PERBANDARAN KUALA KANGSAR |
| 20 | T016 | 16 | 4.877849 | 100.907455 | MAJLIS PERBANDARAN KUALA KANGSAR |
| 21 | KACP ABA4015 T04 | 13 | 4.877952 | 100.907514 | MAJLIS PERBANDARAN KUALA KANGSAR |
| 22 | KACP ABA4015 T05 | 30 | 4.878177 | 100.907699 | MAJLIS PERBANDARAN KUALA KANGSAR |
| 23 | KACP ABA4015 T03 | 38 | 4.878449 | 100.907894 | MAJLIS PERBANDARAN KUALA KANGSAR |
| 24 | T017 | 45 | 4.878808 | 100.907745 | MAJLIS PERBANDARAN KUALA KANGSAR |
| 25 | T018 | 43 | 4.879192 | 100.907689 | MAJLIS PERBANDARAN KUALA KANGSAR |
| 26 | T019 | 38 | 4.879532 | 100.907794 | MAJLIS PERBANDARAN KUALA KANGSAR |
| 27 | T020 | 40 | 4.879853 | 100.907890 | MAJLIS PERBANDARAN KUALA KANGSAR |
| 28 | T014 | | 4.877692 | 100.907158 | JKR KUALA KANGSAR |
| 29 | T021 | 23 | 4.877496 | 100.907182 | JKR KUALA KANGSAR |
| 30 | T022 | 21 | 4.877327 | 100.907156 | JKR KUALA KANGSAR |
| 31 | T023 | 21 | 4.877146 | 100.907126 | JKR KUALA KANGSAR |
| 32 | MANHOLE 3 | 28 | 4.876918 | 100.907097 | JKR KUALA KANGSAR |
| 33 | MANHOLE 4 | 100 | 4.876649 | 100.907061 | JKR KUALA KANGSAR |
| 34 | T024 | 28 | 4.876539 | 100.907288 | JKR KUALA KANGSAR |
| 35 | T025 | 30 | 4.876414 | 100.907520 | JKR KUALA KANGSAR |
| 36 | T026 | 28 | 4.876306 | 100.907741 | JKR KUALA KANGSAR |
| 37 | T027 | 28 | 4.876178 | 100.907953 | JKR KUALA KANGSAR |
| 38 | T028 | 27 | 4.876069 | 100.908163 | JKR KUALA KANGSAR |
| 39 | T029 | 28 | 4.875930 | 100.908372 | JKR KUALA KANGSAR |
| 40 | T030 | 29 | 4.875791 | 100.908589 | JKR KUALA KANGSAR |
| 41 | T031 | 32 | 4.875704 | 100.908868 | JKR KUALA KANGSAR |
| 42 | T032 | 26 | 4.875681 | 100.909088 | JKR KUALA KANGSAR |
| 43 | T033 | 28 | 4.875604 | 100.909317 | JKR KUALA KANGSAR |
| 44 | T034 | 24 | 4.875541 | 100.909515 | JKR KUALA KANGSAR |
| 45 | KACP ABA4015 T5/1 | 25 | 4.875455 | 100.909715 | JKR KUALA KANGSAR |
| 46 | T035 | 29 | 4.875397 | 100.909956 | JKR KUALA KANGSAR |
| 47 | T036 | 26 | 4.875315 | 100.910168 | JKR KUALA KANGSAR |

| | | | | | |
|----|------------------|----|----------|------------|-------------------|
| 48 | T037 | 21 | 4.875250 | 100.910339 | JKR KUALA KANGSAR |
| 49 | T038 | 26 | 4.875159 | 100.910551 | JKR KUALA KANGSAR |
| 50 | T039 | 26 | 4.875055 | 100.910752 | JKR KUALA KANGSAR |
| 51 | T040 | 25 | 4.874970 | 100.910951 | JKR KUALA KANGSAR |
| 52 | T041 | 45 | 4.874836 | 100.911325 | JKR KUALA KANGSAR |
| 53 | T042 | 22 | 4.874746 | 100.91149 | JKR KUALA KANGSAR |
| 54 | T043 | 24 | 4.874675 | 100.911703 | JKR KUALA KANGSAR |
| 55 | T044 | 23 | 4.874585 | 100.911887 | JKR KUALA KANGSAR |
| 56 | T045 | 22 | 4.874511 | 100.912065 | JKR KUALA KANGSAR |
| 57 | KACP ABA4015 T07 | 26 | 4.874415 | 100.912272 | JKR KUALA KANGSAR |
| 58 | T046 | 23 | 4.874344 | 100.912460 | JKR KUALA KANGSAR |
| 59 | T047 | 24 | 4.874251 | 100.912654 | JKR KUALA KANGSAR |
| 60 | T048 | 22 | 4.874176 | 100.912836 | JKR KUALA KANGSAR |
| 61 | T049 | 21 | 4.874110 | 100.913005 | JKR KUALA KANGSAR |
| 62 | T050 | 24 | 4.874005 | 100.913194 | JKR KUALA KANGSAR |
| 63 | T051 | 22 | 4.873925 | 100.913372 | JKR KUALA KANGSAR |
| 64 | T052 | 33 | 4.873850 | 100.913655 | JKR KUALA KANGSAR |
| 65 | T053 | 37 | 4.873710 | 100.913950 | JKR KUALA KANGSAR |
| 66 | T054 | 27 | 4.873633 | 100.914161 | JKR KUALA KANGSAR |
| 67 | T055 | 23 | 4.873562 | 100.914352 | JKR KUALA KANGSAR |
| 68 | T056 | 21 | 4.873488 | 100.914526 | JKR KUALA KANGSAR |
| 69 | T057 | 24 | 4.873393 | 100.914711 | JKR KUALA KANGSAR |
| 70 | T058 | 21 | 4.873312 | 100.914879 | JKR KUALA KANGSAR |
| 71 | T059 | 22 | 4.873230 | 100.915050 | JKR KUALA KANGSAR |
| 72 | T060 | 22 | 4.873155 | 100.915221 | JKR KUALA KANGSAR |
| 73 | T061 | 25 | 4.873070 | 100.915410 | JKR KUALA KANGSAR |
| 74 | T062 | 26 | 4.872991 | 100.915619 | JKR KUALA KANGSAR |
| 75 | T063 | 25 | 4.872943 | 100.915833 | JKR KUALA KANGSAR |
| 76 | T064 | 21 | 4.872911 | 100.916012 | JKR KUALA KANGSAR |
| 77 | T065 | 23 | 4.872921 | 100.916212 | JKR KUALA KANGSAR |
| 78 | T066 | 24 | 4.872928 | 100.916402 | JKR KUALA KANGSAR |
| 79 | T067 | 26 | 4.872929 | 100.916623 | JKR KUALA KANGSAR |
| 80 | T068 | 22 | 4.872942 | 100.916818 | JKR KUALA KANGSAR |
| 81 | T069 | 26 | 4.872950 | 100.917043 | JKR KUALA KANGSAR |
| 82 | T070 | 20 | 4.872950 | 100.917217 | JKR KUALA KANGSAR |
| 83 | T071 | 23 | 4.872982 | 100.917422 | JKR KUALA KANGSAR |
| 84 | T072 | 21 | 4.872995 | 100.917613 | JKR KUALA KANGSAR |
| 85 | T073 | 23 | 4.873007 | 100.917815 | JKR KUALA KANGSAR |
| 86 | T074 | 24 | 4.873031 | 100.918024 | JKR KUALA KANGSAR |
| 87 | T075 | 32 | 4.873051 | 100.918310 | JKR KUALA KANGSAR |
| 88 | KACP ABA4015 T08 | 37 | 4.873076 | 100.918626 | JKR KUALA KANGSAR |
| 89 | T076 | 30 | 4.873115 | 100.918894 | JKR KUALA KANGSAR |
| 90 | T077 | 25 | 4.873186 | 100.919101 | JKR KUALA KANGSAR |
| 91 | T078 | 22 | 4.873254 | 100.919293 | JKR KUALA KANGSAR |
| 92 | T079 | 23 | 4.873364 | 100.919477 | JKR KUALA KANGSAR |
| 93 | T080 | 21 | 4.873478 | 100.919634 | JKR KUALA KANGSAR |
| 94 | T081 | 26 | 4.873620 | 100.919816 | JKR KUALA KANGSAR |
| 95 | T082 | 25 | 4.873763 | 100.919996 | JKR KUALA KANGSAR |
| 96 | T083 | 23 | 4.873892 | 100.920161 | JKR KUALA KANGSAR |
| 97 | T084 | 24 | 4.874005 | 100.920347 | JKR KUALA KANGSAR |
| 98 | T085 | 45 | 4.874218 | 100.920688 | JKR KUALA KANGSAR |
| 99 | T086 | 27 | 4.874287 | 100.920922 | JKR KUALA KANGSAR |

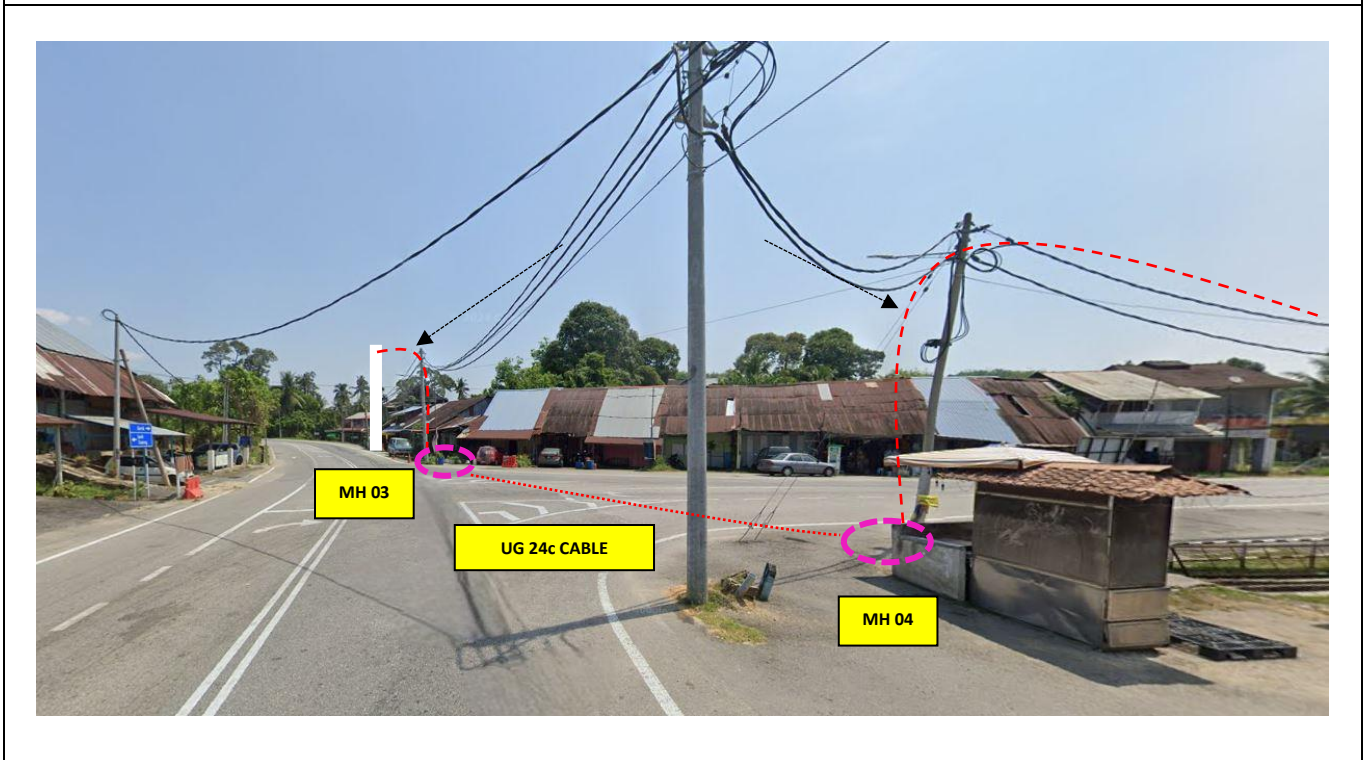
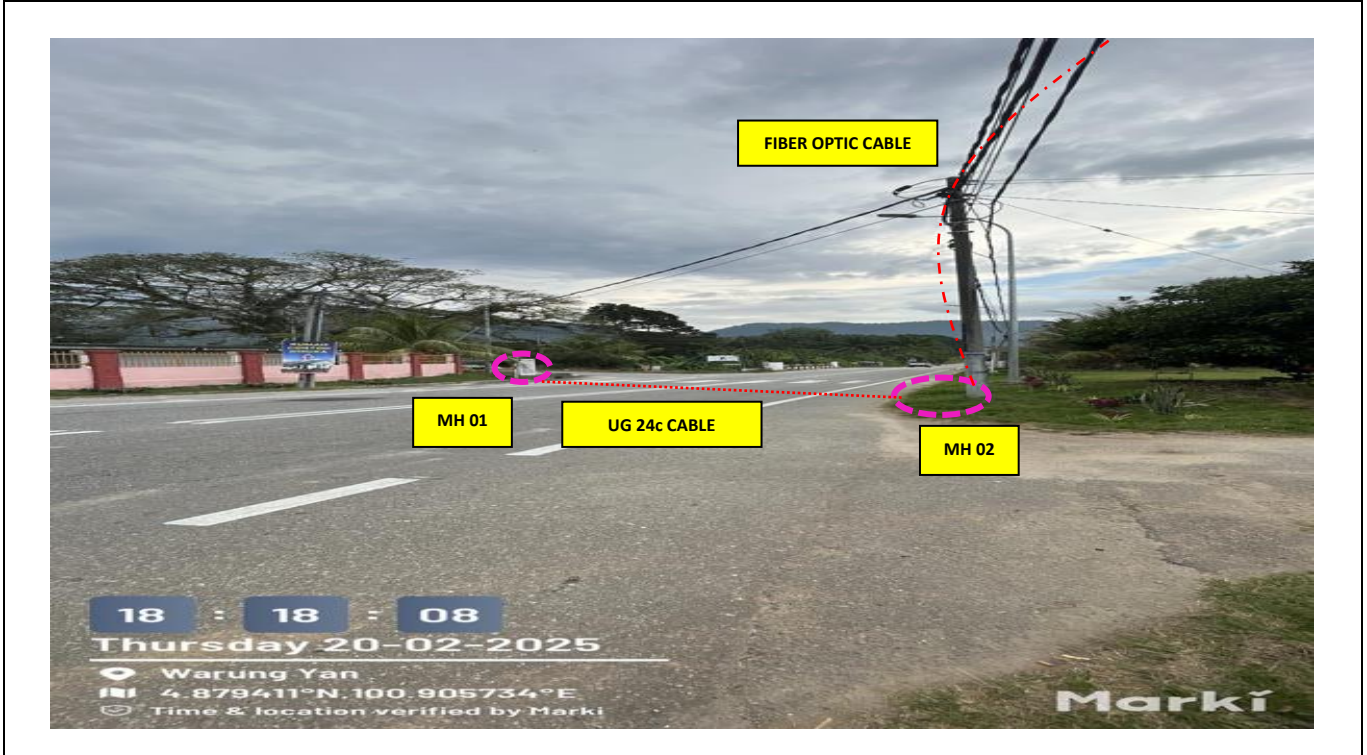


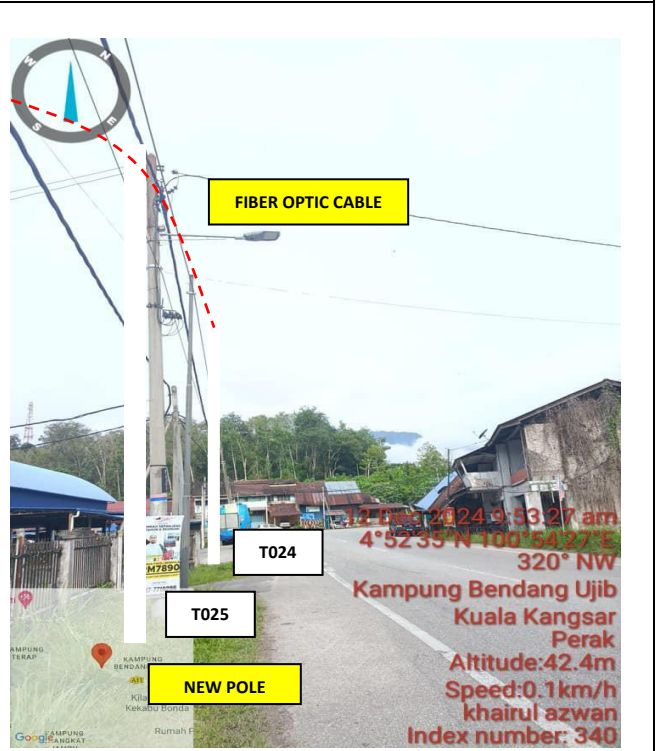
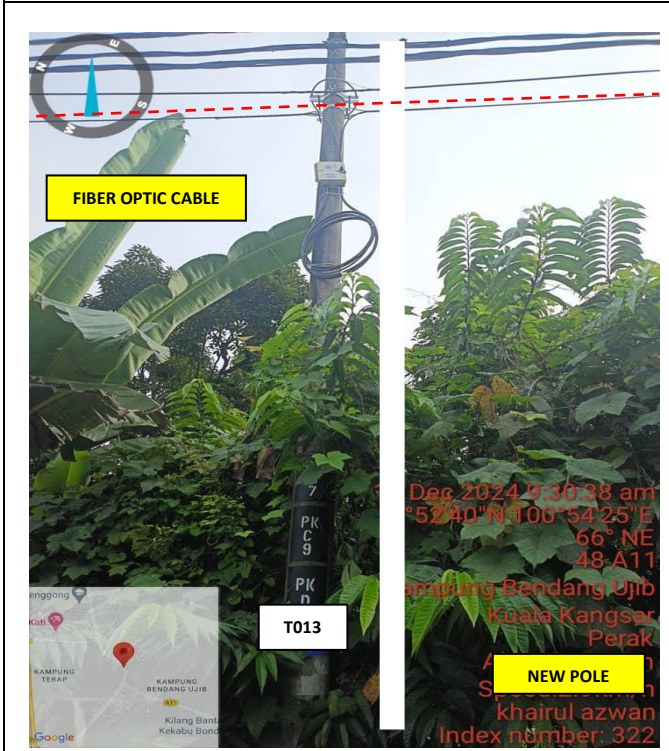
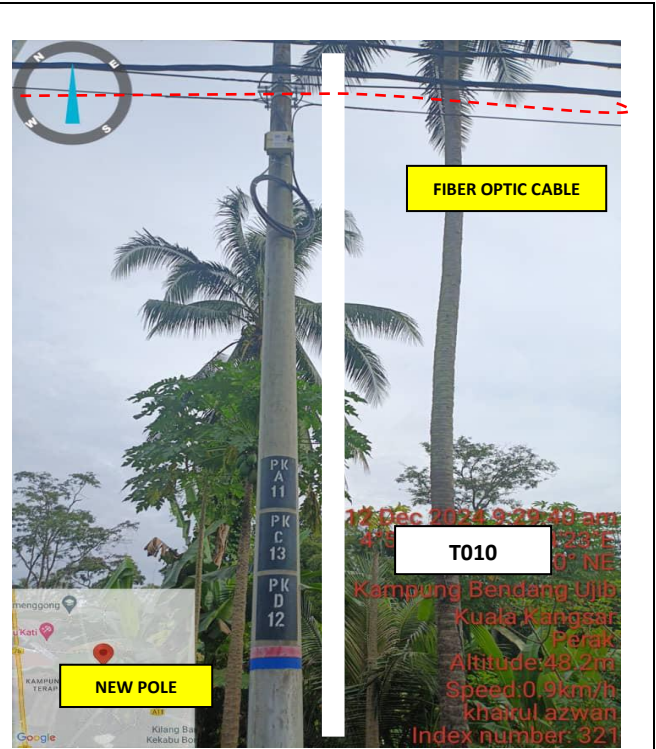
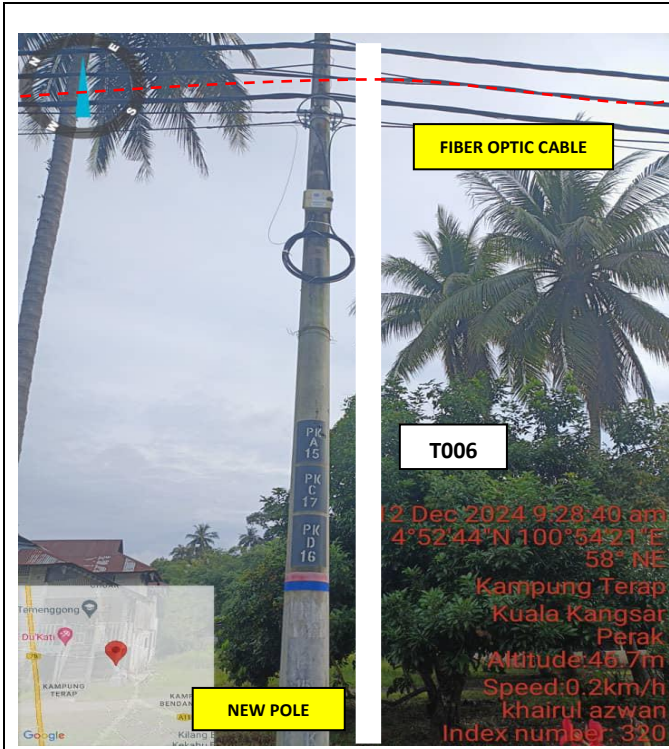
**PROJEK PENYEDIAAN DAN PENYELENGGARAAN POINT OF PRESENCE (POP)
 FASA 2: HAB INFRASTRUKTUR GENTIAN OPTIK BERHAMPIRAN DENGAN
 SEKOLAH, KAWASAN PERINDUSTRIAN, PREMIS KERAJAAN DAN KOMUNITI
 SEKITARNYA OLEH KEMENTERIAN KOMUNIKASI MALAYSIA - ZON UTARA
 (KKMM.400-11/17/132(1))**

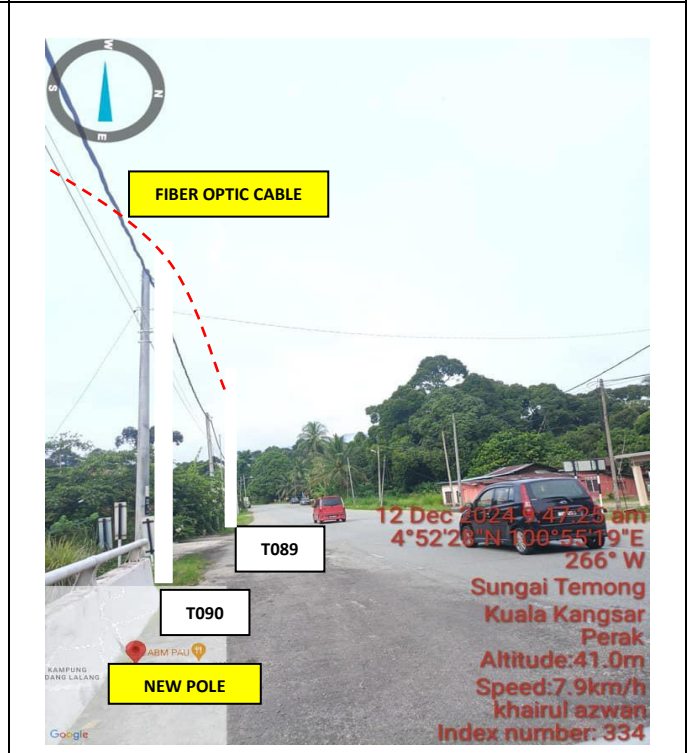
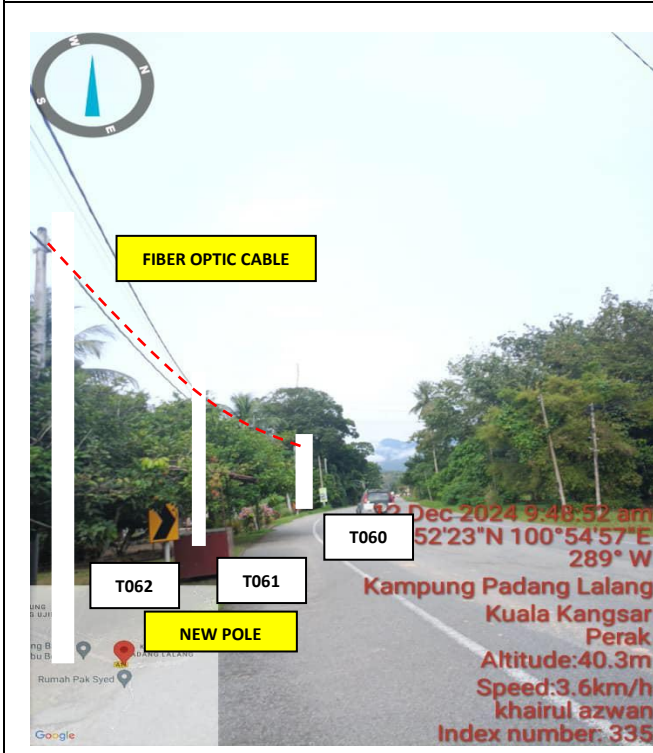
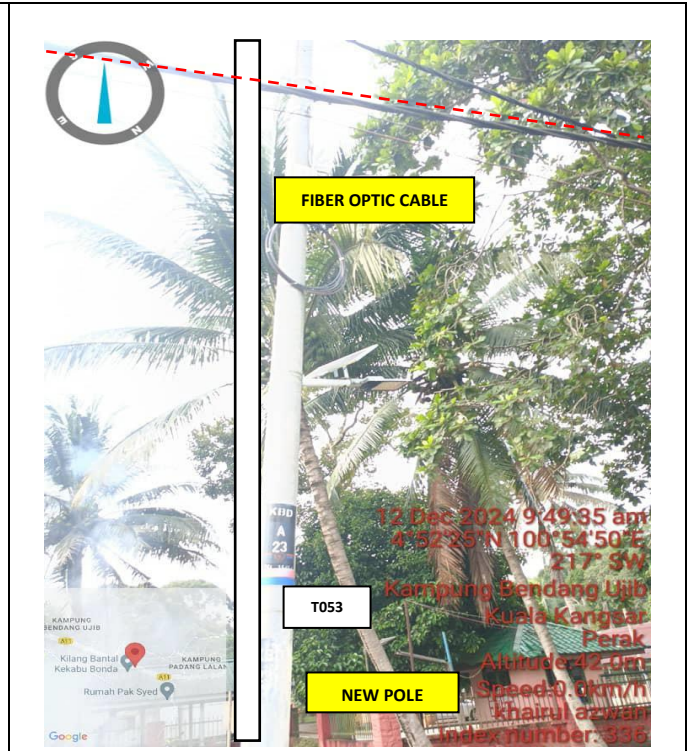
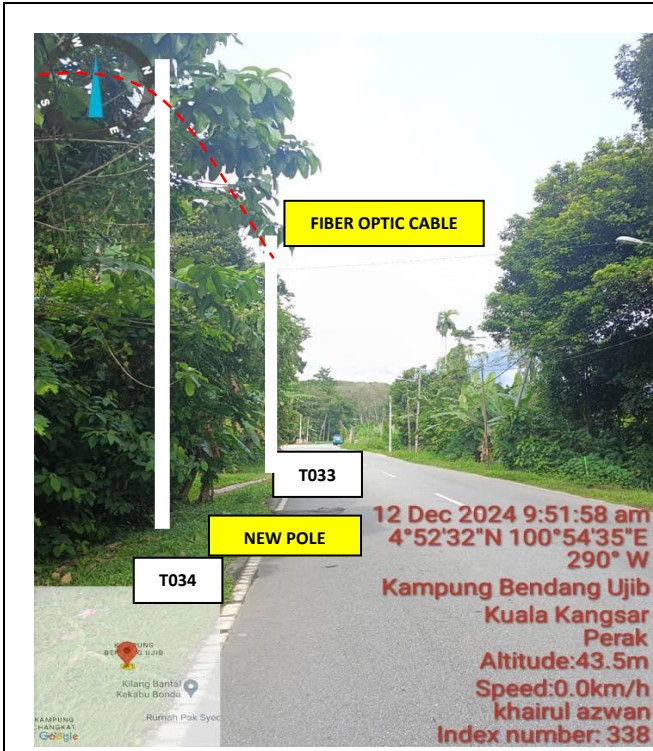




| | | | | | |
|-----|------------------|----|----------|------------|-------------------|
| 100 | T087 | 20 | 4.874328 | 100.921094 | JKR KUALA KANGSAR |
| 101 | T088 | 37 | 4.874417 | 100.921419 | JKR KUALA KANGSAR |
| 102 | T089 | 28 | 4.874464 | 100.921657 | JKR KUALA KANGSAR |
| 103 | T090 | 25 | 4.874513 | 100.921860 | JKR KUALA KANGSAR |
| 104 | T091 | 31 | 4.874594 | 100.922123 | JKR KUALA KANGSAR |
| 105 | T092 | 22 | 4.874660 | 100.922293 | JKR KUALA KANGSAR |
| 106 | T093 | 28 | 4.874730 | 100.922522 | JKR KUALA KANGSAR |
| 107 | T094 | 28 | 4.874812 | 100.922767 | JKR KUALA KANGSAR |
| 108 | T095 | 28 | 4.874867 | 100.923006 | JKR KUALA KANGSAR |
| 109 | T096 | 31 | 4.874952 | 100.923270 | JKR KUALA KANGSAR |
| 110 | T097 | 11 | 4.874974 | 100.923343 | JKR KUALA KANGSAR |
| 111 | T098 | 21 | 4.875009 | 100.923531 | JKR KUALA KANGSAR |
| 112 | KACP ABA4015 T06 | 11 | 4.875042 | 100.923625 | JKR KUALA KANGSAR |
| 113 | T099 | 13 | 4.875061 | 100.923735 | JKR KUALA KANGSAR |
| 114 | T100 | 23 | 4.875072 | 100.923931 | JKR KUALA KANGSAR |
| 115 | T101 | 23 | 4.875091 | 100.924136 | JKR KUALA KANGSAR |
| 116 | T102 | 24 | 4.875065 | 100.924334 | JKR KUALA KANGSAR |
| 117 | T103 | 27 | 4.875045 | 100.924580 | JKR KUALA KANGSAR |
| 118 | T104 | 22 | 4.875013 | 100.924764 | JKR KUALA KANGSAR |
| 119 | T105 | 20 | 4.874997 | 100.924939 | JKR KUALA KANGSAR |
| 120 | T106 | 19 | 4.874978 | 100.925096 | JKR KUALA KANGSAR |
| 123 | T107 | 22 | 4.874948 | 100.925290 | JKR KUALA KANGSAR |

5.0 SITE PHOTO- PROPOSED MANHOLE & HDD AND NEW POLE







| | | |
|---|---|---|
|  | <p>PROJEK PENYEDIAAN DAN PENYELENGGARAAN POINT OF PRESENCE (POP) FASA 2: HAB INFRASTRUKTUR GENTIAN OPTIK BERHAMPIRAN DENGAN SEKOLAH, KAWASAN PERINDUSTRIAN, PREMIS KERAJAAN DAN KOMUNITI SEKITARNYA OLEH KEMENTERIAN KOMUNIKASI MALAYSIA - ZON UTARA (KKMM.400-11/17/132(1))</p> |  |
|---|---|---|

6.0 3rd PARTIES DEPENDENCIES

| NO. | LOCAL COUNCIL/ AUTHORITY | REMARK |
|-----|----------------------------------|--------|
| 1 | Majlis Perbandaran Kuala Kangsar | |
| 2 | JKR Kuala Kangsar | |

