

TECHNICAL PROPOSAL

POP2 ABA7033 SEKOLAH KEBANGSAAN (FELDA) LAWIN SELATAN (D-SIDE)

Company Name : WabTech Sdn Bhd
Company Address : 101-1, Jalan Metro Sendayan, 71950 Seremban, Negeri Sembilan.
Prepared By : Mohd Farid bin Othman
Date : 13/01/2025



Starting Point

Site / Boundary Name : Sekolah Kebangsaan (FELDA) Lawin Selatan
 Address : 1155 Jalan Felda Lawin Selatan, 33410 Lenggong, Perak.
 District : Lenggong
 Postcode : 33410
 State : Perak
 GPS Coordinate : 5.305177, 101.034637
 LRD : A

End Point

Site / Boundary Name : Jalan Serindit, FELDA Lawin Selatan
 Address : Jalan Serindit, FELDA Lawin Selatan, 33410 Lenggong, Perak.
 District : Lenggong
 Postcode : 33410
 State : Perak
 GPS Coordinate : 5.307021, 101.026807
 LRD : B



PROJEK PENYEDIAAN DAN PENYELENGGARAAN POINT OF PRESENCE (POP)
FASA 2: HAB INFRASTRUTUK GENTIAN OPTIK BERHAMPIRAN DENGAN
SEKOLAH, KAWASAN PERINDUSTRIAN, PREMIS KERAJAAN DAN KOMUNITI
SEKITARNYA OLEH KEMENTERIAN KOMUNIKASI MALAYSIA – ZON UTARA
(KKMM.400-11/17/132(1))



WABTECH SDN BHD
(1398887-X)

1.0 WORK SUMMARY

NO	PROPOSED DISTANCE AND METHOD	UNIT	QUANTITY
1	Horizontal Directional Drilling (HDD)	m	0
2	Carriage Way Open Trench (CW)	m	0
3	Grass Verge Open Trenching (GV)	m	0
4	Micro Trenching (MT)	m	0
Total			

NO	OTHER INFORMATION	UNIT	QUANTITY
1	Installation of Short Span ADSS Fibre Cables	m	2,950m
2	Install New Pole	ea	76
3	Install New JRC7 Manhole	ea	0
4	Install GI Riser 100mm	ea	0
5	Install Fiber Distribution Point and Closure (Splicing, Termination and Testing)	ea	17
6	Estimated Time Required for Completion	days	30



PROJEK PENYEDIAAN DAN PENYELENGGARAAN POINT OF PRESENCE (POP)
FASA 2: HAB INFRASTRUTUK GENTIAN OPTIK BERHAMPIRAN DENGAN
SEKOLAH, KAWASAN PERINDUSTRIAN, PREMIS KERAJAAN DAN KOMUNITI
SEKITARNYA OLEH KEMENTERIAN KOMUNIKASI MALAYSIA – ZON UTARA
(KKMM.400-11/17/132(1))



WABTECH SDN BHD
(1398887-X)

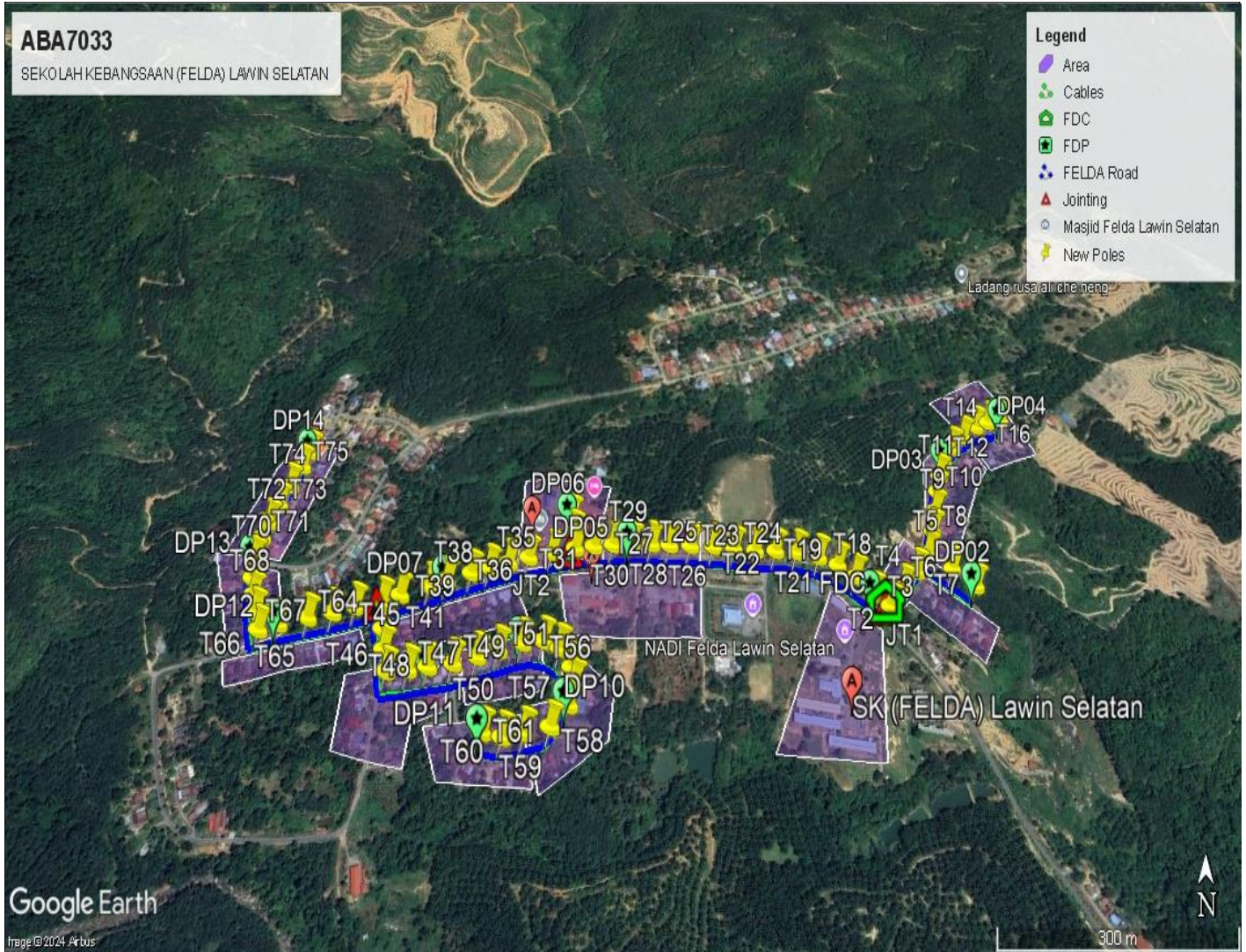
2.0 LOCAL AUTHORITY SUMMARY

Daerah Lenggong

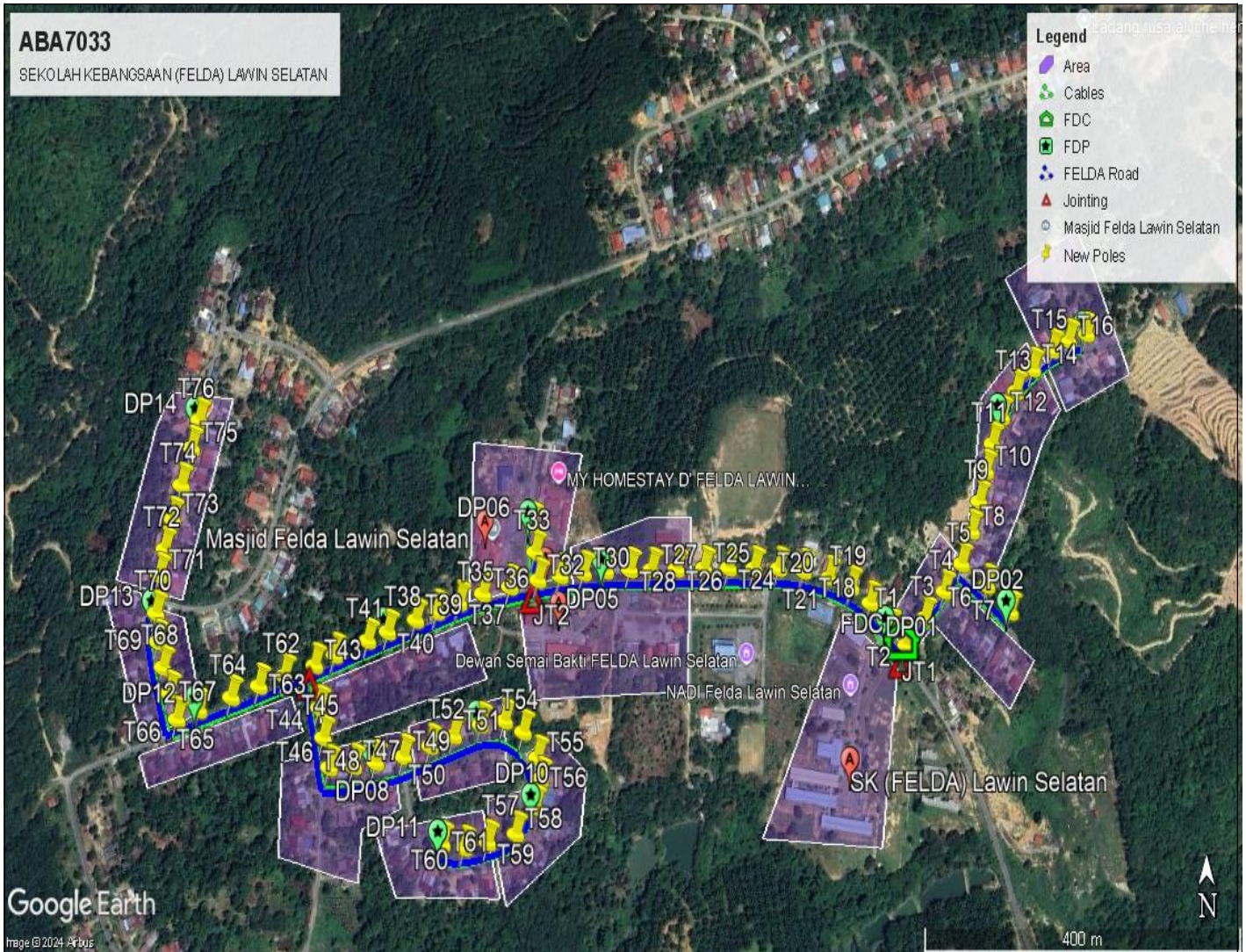
NO	ITEMS	Owner	Quantity	Distance (m)
1	HDD	JKR	-	-
		Majlis	-	-
		PDT	-	-
2	New Pole	JKR	-	-
		FELDA Lawin Selatan	76	2336
		PDT	-	-
Total Distance (m)				2336

3.0 SITE PLAN (KMZ)

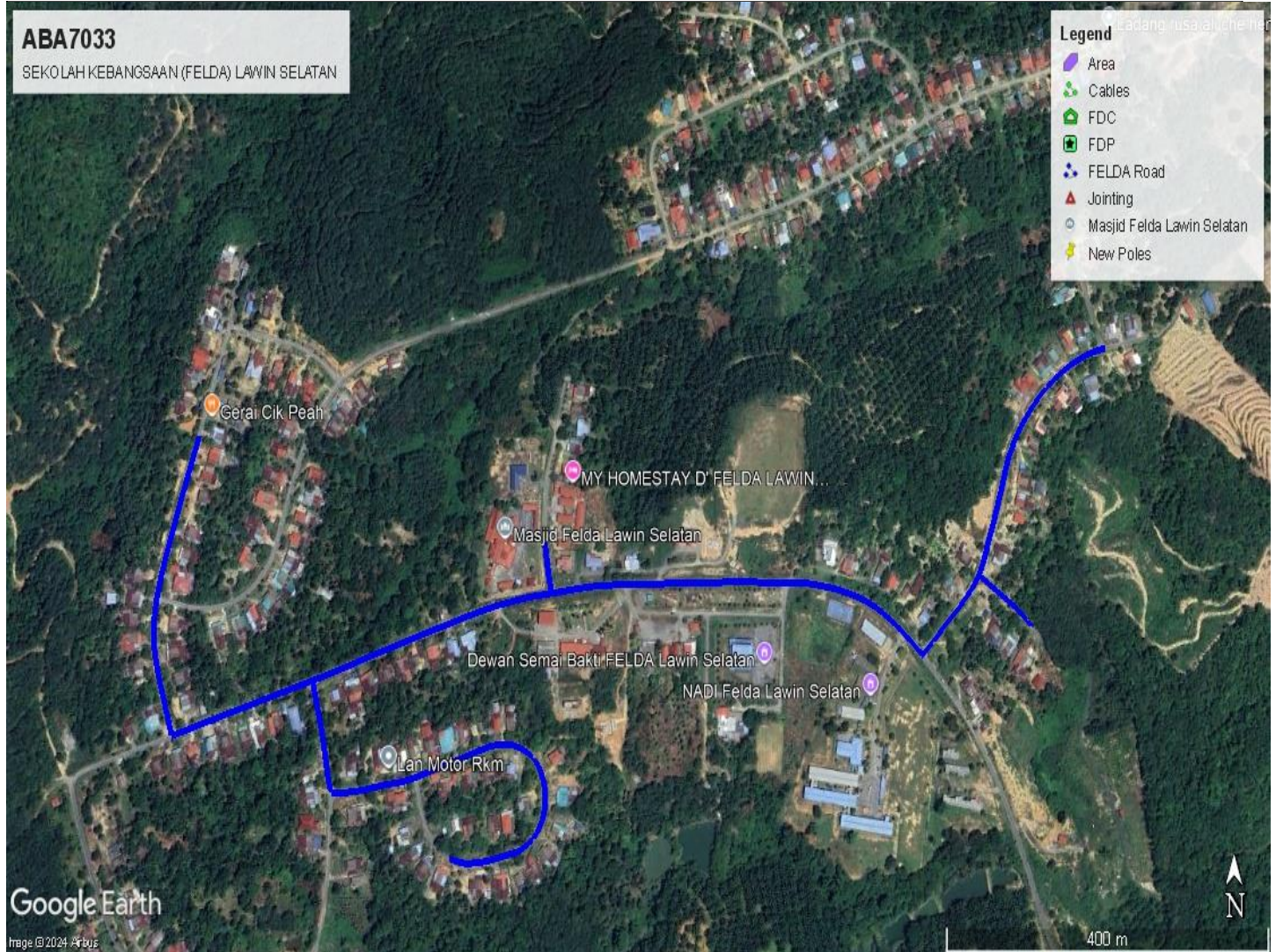
3.1 Overview Site Area



3.2 Site boundry



3.3 Road Boundry

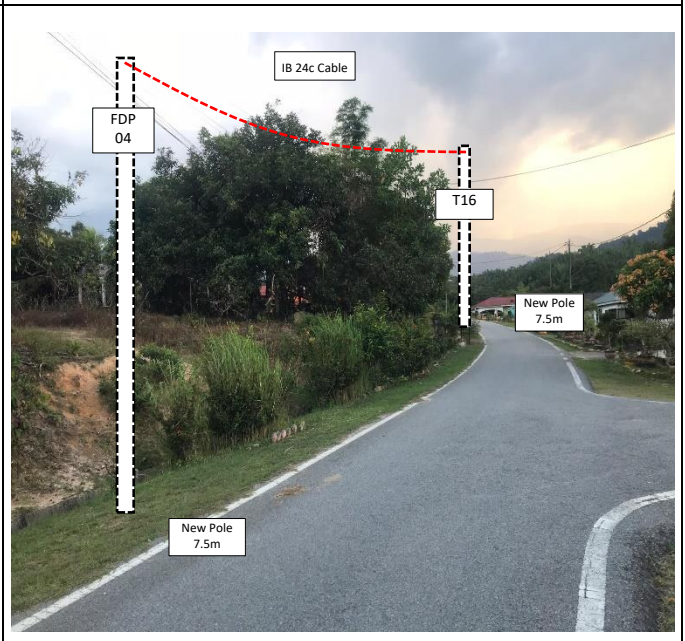
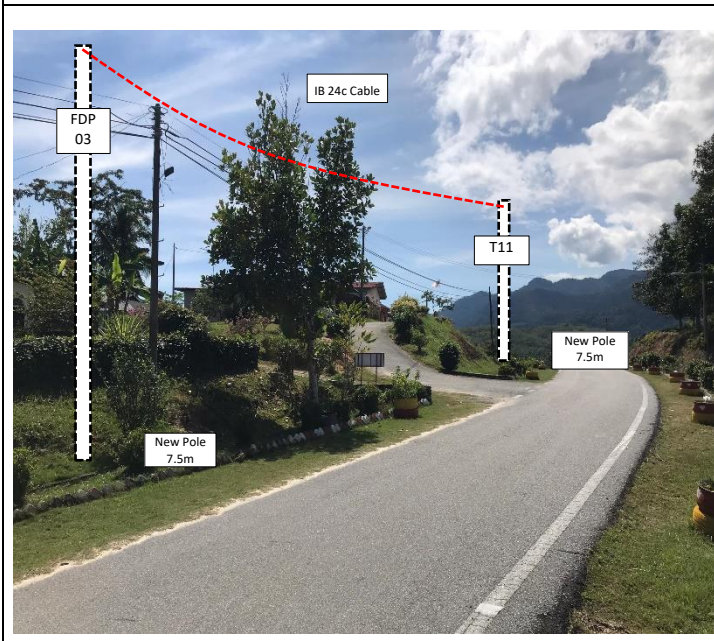
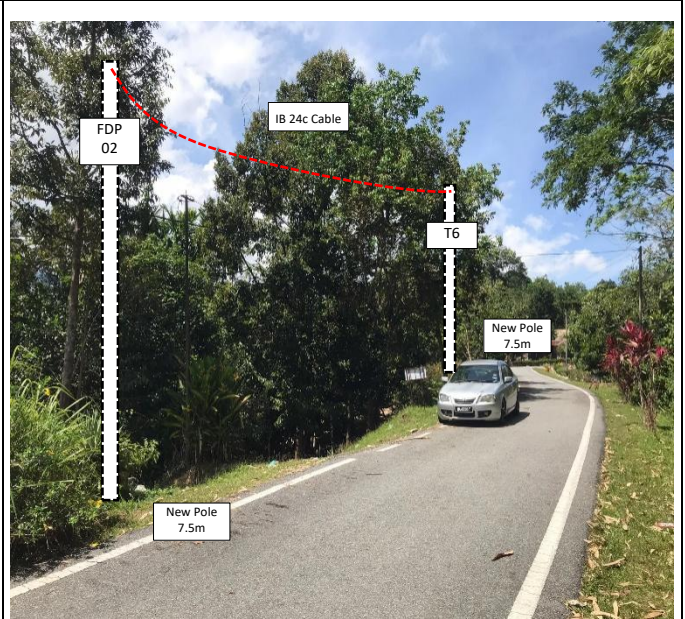
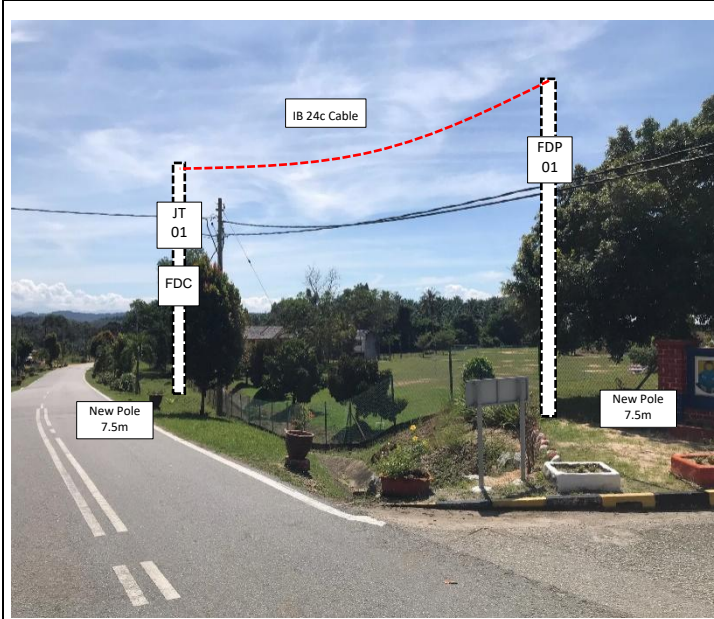


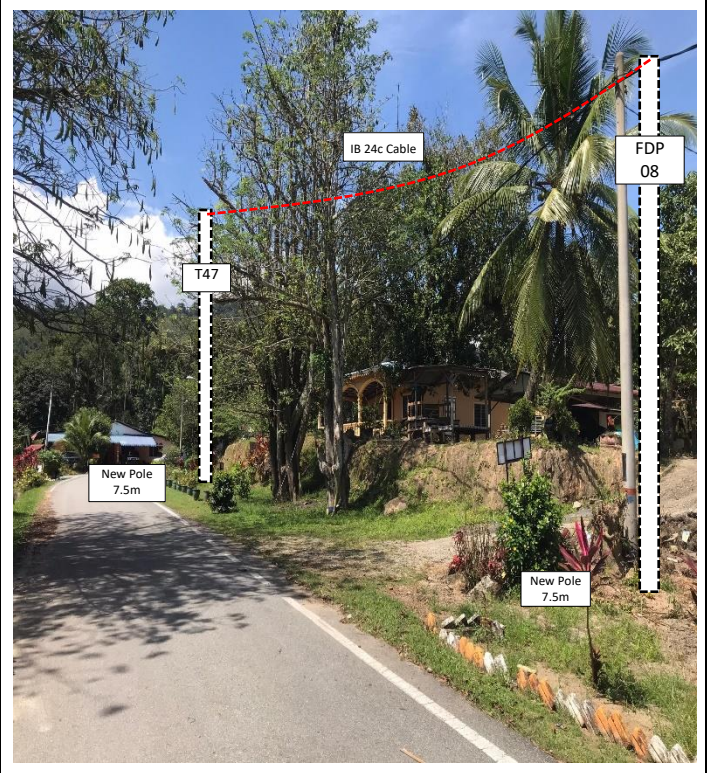
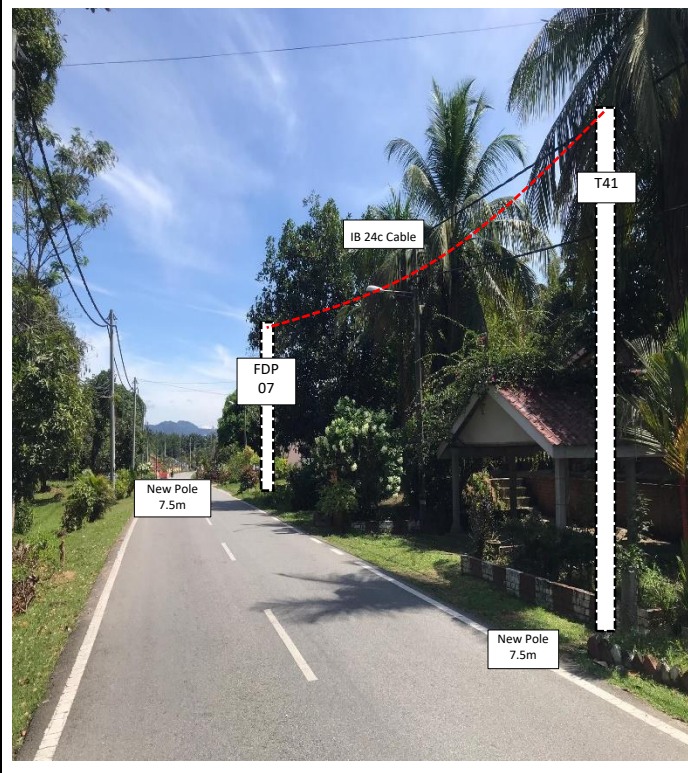
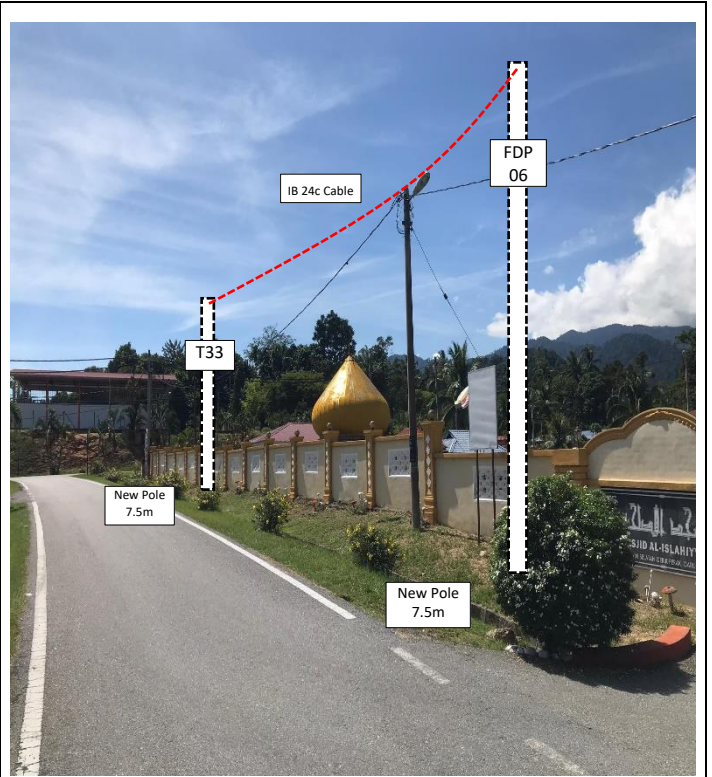
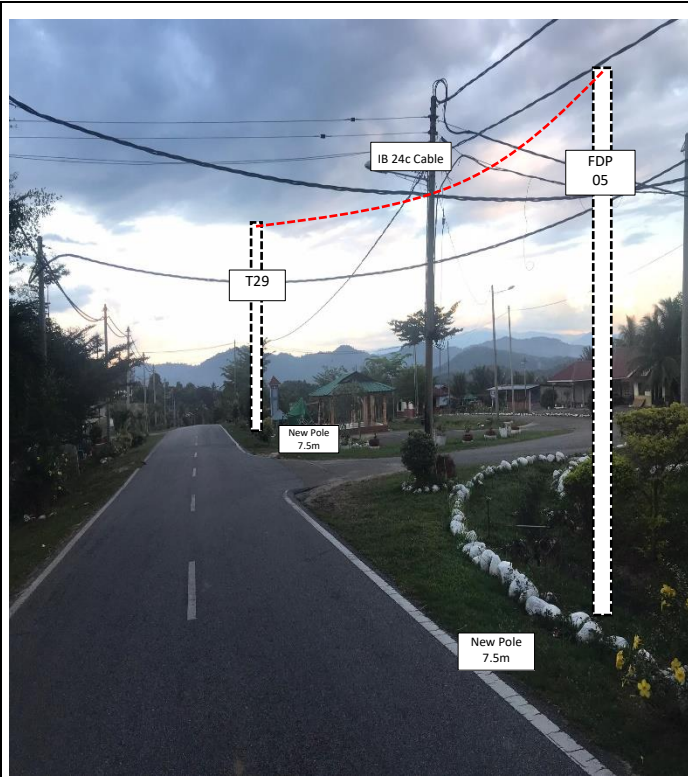
4.0 PROPOSED NEW POLE

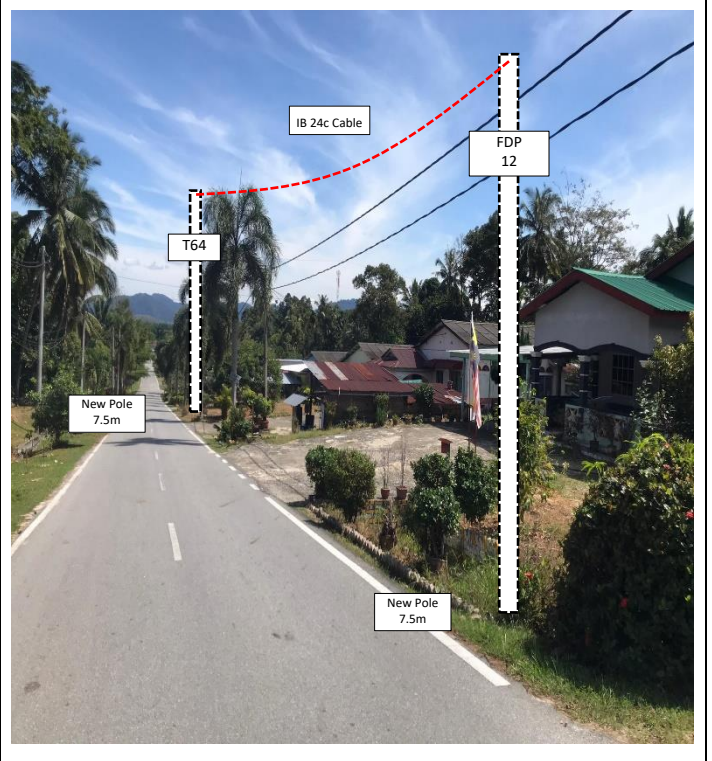
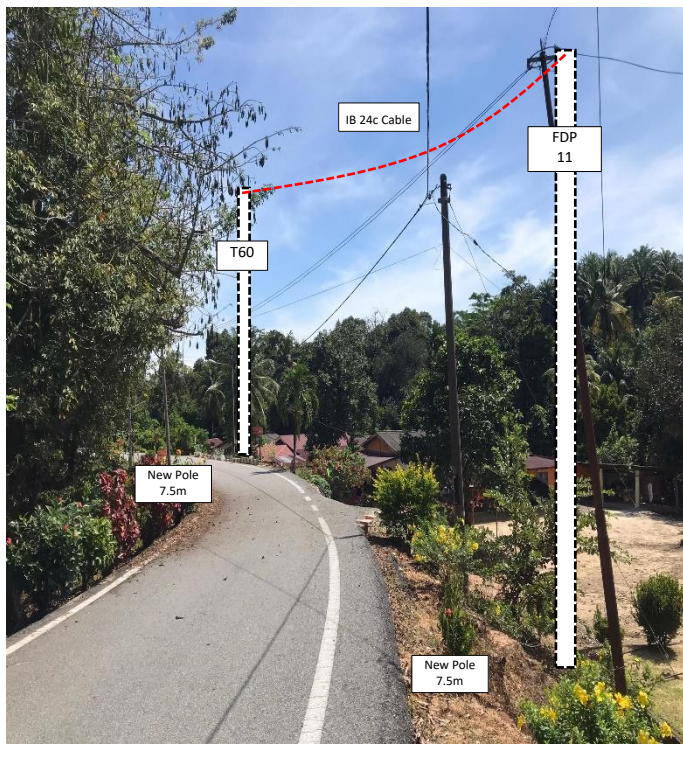
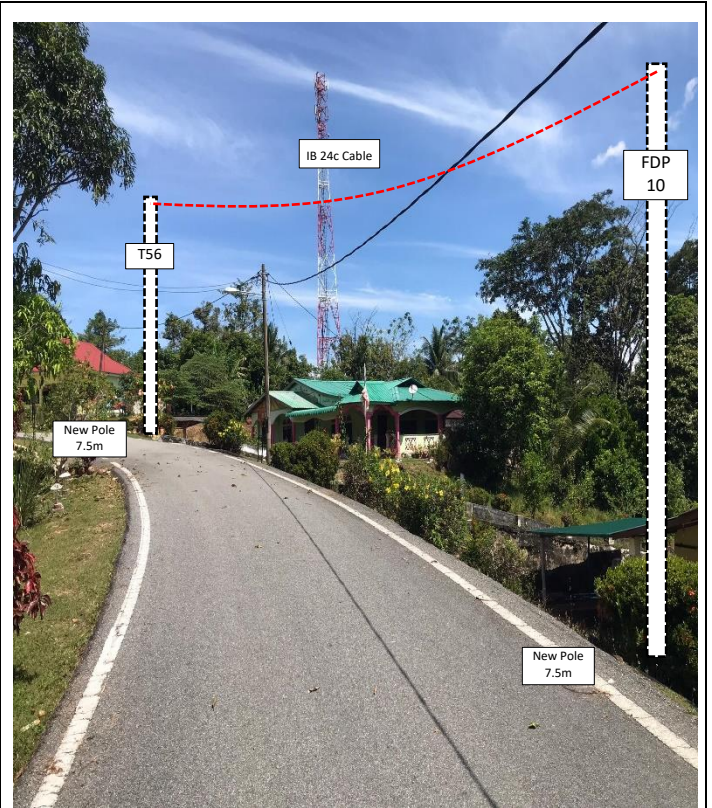
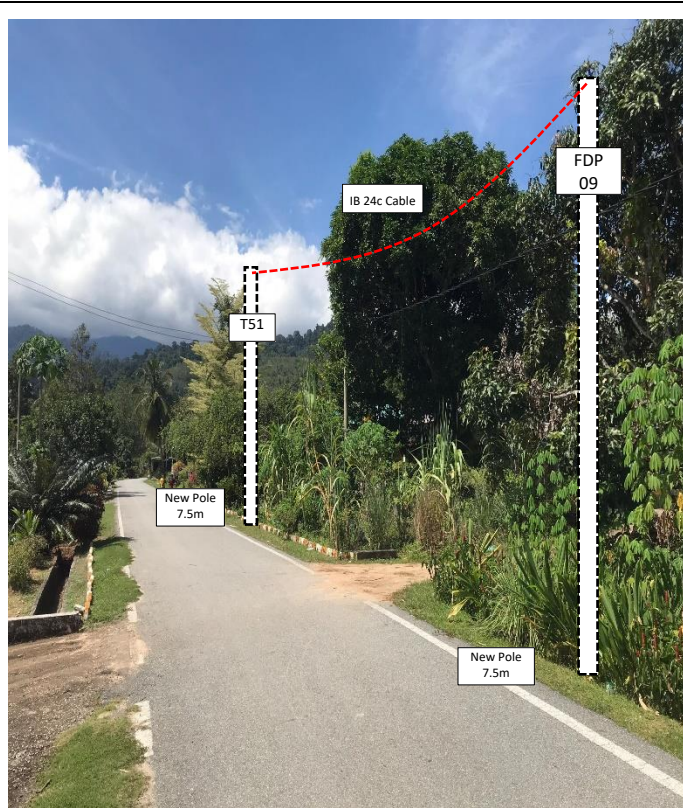
Proposed New Pole Coordinate					
No.	Pole Number	Distance (m)	Latitude	Longitude	Local Authority
1	FDC POLE	10	5.305179	101.034639	FELDA Lawin Selatan
2	T001	26	5.305179	101.034639	FELDA Lawin Selatan
3	T002	37	5.305041	101.034824	FELDA Lawin Selatan
4	T003	36	5.305283	101.035048	FELDA Lawin Selatan
5	T004	35	5.305516	101.035274	FELDA Lawin Selatan
6	T005	39	5.305762	101.035474	FELDA Lawin Selatan
7	T006	39	5.305569	101.035768	FELDA Lawin Selatan
8	T007	35	5.305333	101.036032	FELDA Lawin Selatan
9	T008	30	5.306052	101.035586	FELDA Lawin Selatan
10	T009	31	5.306317	101.035667	FELDA Lawin Selatan
11	T010	29	5.306586	101.035741	FELDA Lawin Selatan
12	T011	30	5.306833	101.035825	FELDA Lawin Selatan
13	T012	32	5.307078	101.035945	FELDA Lawin Selatan
14	T013	32	5.307311	101.036123	FELDA Lawin Selatan
15	T014	32	5.307516	101.036328	FELDA Lawin Selatan
16	T015	24	5.307688	101.036564	FELDA Lawin Selatan
17	T016	26	5.307781	101.036757	FELDA Lawin Selatan
18	T017	36	5.307845	101.036983	FELDA Lawin Selatan
19	T018	29	5.305415	101.034417	FELDA Lawin Selatan
20	T019	30	5.305552	101.034194	FELDA Lawin Selatan
21	T020	33	5.305638	101.033940	FELDA Lawin Selatan
22	T021	31	5.305697	101.033647	FELDA Lawin Selatan
23	T022	31	5.305719	101.033365	FELDA Lawin Selatan
24	T023	32	5.305720	101.033087	FELDA Lawin Selatan
25	T024	32	5.305722	101.032795	FELDA Lawin Selatan
26	T025	35	5.305720	101.032511	FELDA Lawin Selatan
27	T026	32	5.305710	101.032199	FELDA Lawin Selatan
28	T027	27	5.305705	101.031915	FELDA Lawin Selatan
29	T028	30	5.305706	101.031672	FELDA Lawin Selatan
30	T029	28	5.305695	101.031397	FELDA Lawin Selatan
31	T030	29	5.305677	101.031148	FELDA Lawin Selatan
32	T031	28	5.305651	101.030890	FELDA Lawin Selatan
33	T032	28	5.305614	101.030641	FELDA Lawin Selatan
34	T033	28	5.305860	101.030604	FELDA Lawin Selatan
35	T034	36	5.306109	101.030567	FELDA Lawin Selatan
36	T035	34	5.305554	101.030326	FELDA Lawin Selatan
37	T036	30	5.305495	101.030022	FELDA Lawin Selatan
38	T037	29	5.305415	101.029759	FELDA Lawin Selatan
39	T038	27	5.305338	101.029512	FELDA Lawin Selatan

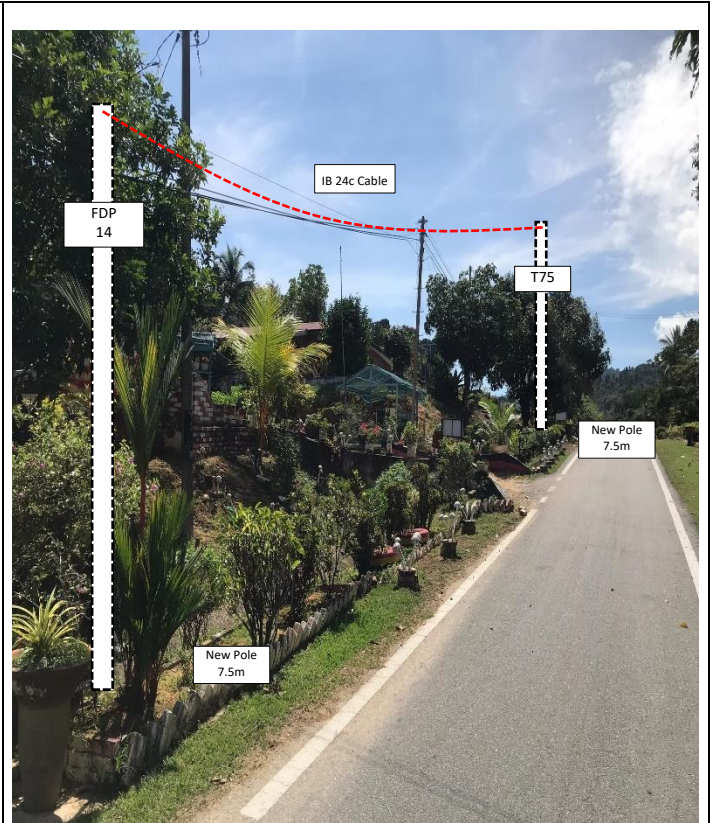
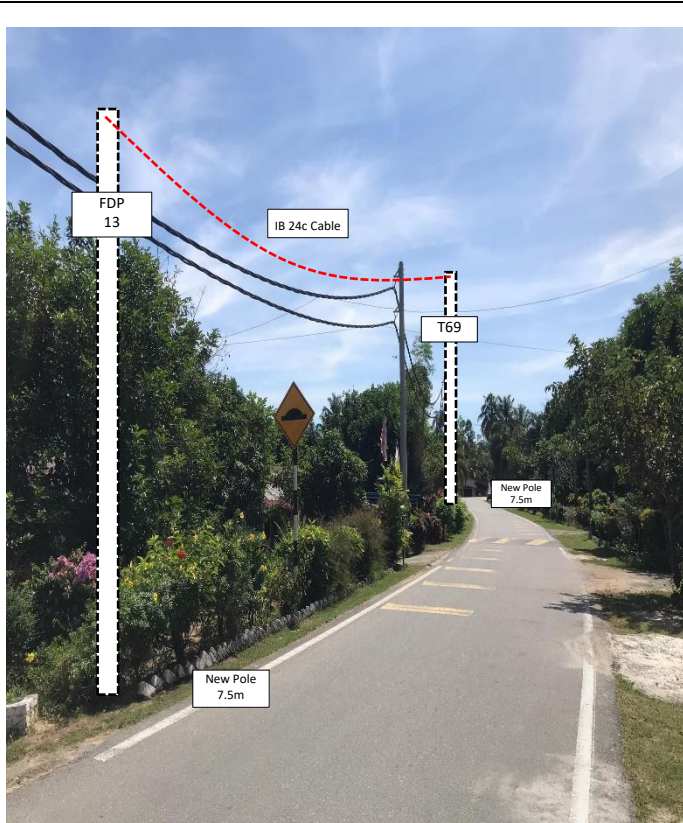
No.	Pole Number	Distance (m)	Latitude	Longitude	Local Authority
40	T039	36	5.305266	101.029277	FELDA Lawin Selatan
41	T040	26	5.305163	101.028967	FELDA Lawin Selatan
42	T041	42	5.305086	101.028743	FELDA Lawin Selatan
43	T042	26	5.304961	101.028381	FELDA Lawin Selatan
44	T043	41	5.304874	101.028164	FELDA Lawin Selatan
45	T044	29	5.304509	101.028224	FELDA Lawin Selatan
46	T045	29	5.304253	101.028276	FELDA Lawin Selatan
47	T046	30	5.303997	101.028344	FELDA Lawin Selatan
48	T047	28	5.304010	101.028614	FELDA Lawin Selatan
49	T048	34	5.304041	101.028860	FELDA Lawin Selatan
50	T049	34	5.304090	101.029163	FELDA Lawin Selatan
51	T050	30	5.304180	101.029457	FELDA Lawin Selatan
52	T051	35	5.304267	101.029714	FELDA Lawin Selatan
53	T052	29	5.304362	101.030012	FELDA Lawin Selatan
54	T053	26	5.304394	101.030276	FELDA Lawin Selatan
55	T054	30	5.304299	101.030485	FELDA Lawin Selatan
56	T055	21	5.304077	101.030643	FELDA Lawin Selatan
57	T056	27	5.303891	101.030676	FELDA Lawin Selatan
58	T057	35	5.303652	101.030618	FELDA Lawin Selatan
59	T058	35	5.303420	101.030405	FELDA Lawin Selatan
60	T059	29	5.303347	101.030095	FELDA Lawin Selatan
61	T060	27	5.303301	101.029833	FELDA Lawin Selatan
62	T061	38	5.303340	101.029592	FELDA Lawin Selatan
63	T062	32	5.304785	101.027832	FELDA Lawin Selatan
64	T063	34	5.304697	101.027558	FELDA Lawin Selatan
65	T064	40	5.304602	101.027266	FELDA Lawin Selatan
66	T065	27	5.304497	101.026923	FELDA Lawin Selatan
67	T066	27	5.304417	101.026691	FELDA Lawin Selatan
68	T067	26	5.304641	101.026599	FELDA Lawin Selatan
69	T068	25	5.304860	101.026521	FELDA Lawin Selatan
70	T069	28	5.305080	101.026455	FELDA Lawin Selatan
71	T070	36	5.305326	101.026427	FELDA Lawin Selatan
72	T071	25	5.305653	101.026447	FELDA Lawin Selatan
73	T072	30	5.305880	101.026493	FELDA Lawin Selatan
74	T073	34	5.306142	101.026564	FELDA Lawin Selatan
75	T074	38	5.306440	101.026648	FELDA Lawin Selatan
76	T075	29	5.306772	101.026739	FELDA Lawin Selatan
77	T076	29	5.307020	101.026807	FELDA Lawin Selatan

5.0 SITE PHOTOS - PROPOSED NEW POLE











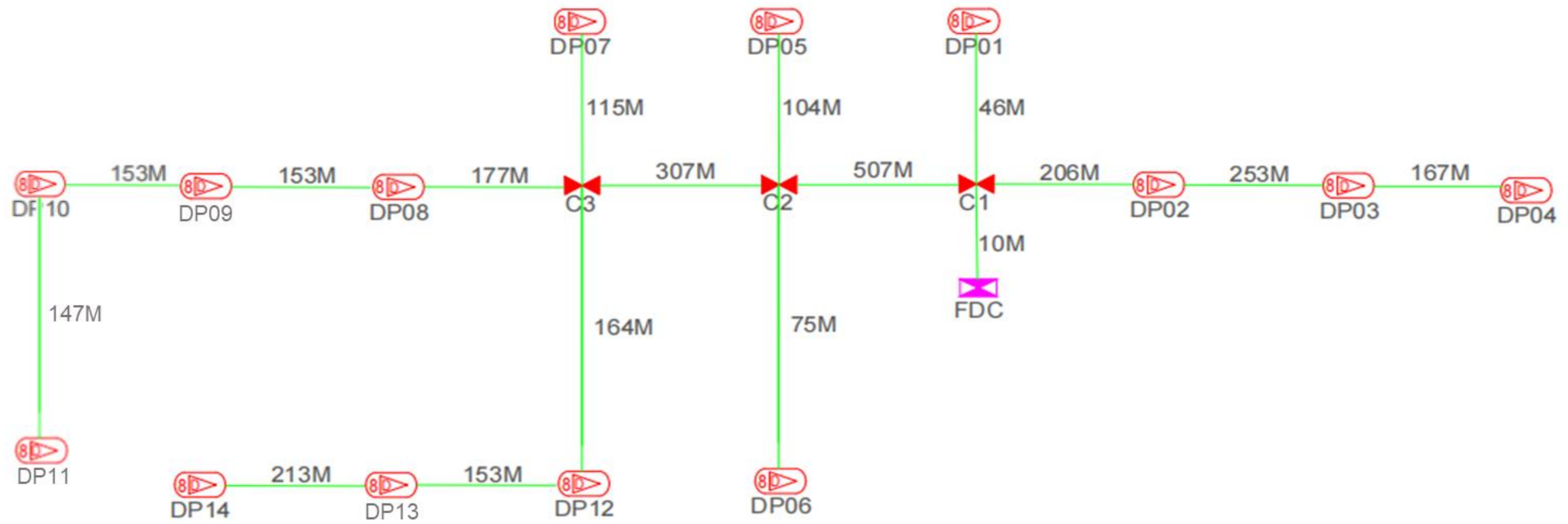
PROJEK PENYEDIAAN DAN PENYELENGGARAAN POINT OF PRESENCE (POP)
FASA 2: HAB INFRASTRUTUK GENTIAN OPTIK BERHAMPIRAN DENGAN
SEKOLAH, KAWASAN PERINDUSTRIAN, PREMIS KERAJAAN DAN KOMUNITI
SEKITARNYA OLEH KEMENTERIAN KOMUNIKASI MALAYSIA – ZON UTARA
(KKMM.400-11/17/132(1))



WABTECH SDN BHD
(1398387-X)

6.0 3rd PARTIES DEPENDENCIES

NO	LOCAL COUNCIL / AUTHORITY	REMARK
1	FELDA Lawin Selatan	2336m
2	JKR Daerah Lenggong	-



TOTAL FOC DISTANCE: 2,950 METERS

LEGEND	
12C FOC	Installed 1:4 splitter in FDC
24C FOC	FDP with (1:8) splitter
48C FOC	Closure
96C FOC	New Manhole (M)
144C FOC	Installed Pole (7.5M)
Installed Pole (5m)	Installed Pole (8m)
Installed Pole (10m)	Suspension Big
Suspension Small	FDC
New Manhole (M7)	Existing Manhole
Existing 7.5M Pole	Existing 10M Pole
LOOP	FDP Boundary
Tension Small / Tension Big	MH1 MH NO.
TKS-1 Existing THB Pole NO.	TKS-2 New Pole NO.
C21 Closure NO.	FDP1 FDP NO.
FDC1 FDC NO.	FDC2 FDC NO.

KEY PLAN : 	PROJECT OWNER : 	MAIN CONTRACTOR : PRIVASAT	SUB-CONTRACTOR : 	PROJECT TITLE : CONTRACT FOR THE PROVISION OF SUPPLY, INSTALLATION, AND COMMISSIONING OF FTTX NETWORK INFRASTRUCTURE - PO P 2 PROJECT D-SIDE - ABA7033-SK (FELDA) LAWAN SELATAN	DRAWING TITLE : ABA7033 SK (FELDA) LAWAN SELATAN	Design By ENGINEER Date DATE
						Drawn By CAD ENGINEER Checked By ENGINEER
DRAWING NUMBER : DRAWING/NUMBER						Sheet : 1/1
THIS PRINT AND ITS COPYRIGHT ARE THE PROPERTY						Size : A3