

TECHNICAL PROPOSAL

POP2 ABA9011 SEKOLAH KEBANGSAAN SUNGAI ITEK (D-SIDE)

Company Name	:	WCWL COMMUNICATIONS SDN BHD
Company Address	:	127, Jalan PUJ 3/3, Taman Puncak Jalil 43300 Subang Jaya Selangor
Prepared By	:	Nur Syahidah Izzatie
Date	:	12/11/2024



POINT A

POINT B

Starting Point

Site / Boundary Name	:	SEKOLAH KEBANGSAAN SUNGAI ITEK
Address	:	Jalan Dusun Seribu
District	:	Gopeng
Postcode	:	31600
State	:	Perak
GPS Coordinate	:	4.456241, 101.183305
LRD	:	A

End Point

Site / Boundary Name	:	SEKOLAH KEBANGSAAN SUNGAI ITEK
Address	:	Jalan Gopeng Mewah 9
District	:	Teja
Postcode	:	31600
State	:	Perak
GPS Coordinate	:	4.460991, 101.173683
LRD	:	B



PROJEK PENYEDIAAN DAN PENYELENGGARAAN POINT OF PRESENCE (POP) FASA 2: HAB INFRASTRUKTUR GENTIAN OPTIK BERHAMPIRAN DENGAN SEKOLAH, KAWASAN PERINDUSTRIAN, PREMIS KERAJAAN DAN KOMUNITI SEKITARNYA OLEH KEMENTERIAN KOMUNIKASI MALAYSIA - ZON UTARA (KKMM.400-11/17/132(1))



Work Summary

No	Proposed Distance and Method	Unit	Qty
1	Horizontal Directional Drilling (HDD)	m	0
2	Carriage Way Open trench (CW)	m	0
3	Grass Verge Open Trenching (GV)	m	0
4	Micro trenching (MT)	m	0
	Total		0

	Other Information	Unit	Qty
1	Proposed Manhole	EA	0
2	Proposed Pole	EA	0
3	Joint Closure	EA	0
4	Estimated time required for completion	days	30



PROJEK PENYEDIAAN DAN PENYELENGGARAAN POINT OF PRESENCE (POP) FASA 2: HAB INFRASTRUKTUR GENTIAN OPTIK BERHAMPIRAN DENGAN SEKOLAH, KAWASAN PERINDUSTRIAN, PREMIS KERAJAAN DAN KOMUNITI SEKITARNYA OLEH KEMENTERIAN KOMUNIKASI MALAYSIA - ZON UTARA (KKMM.400-11/17/132(1))



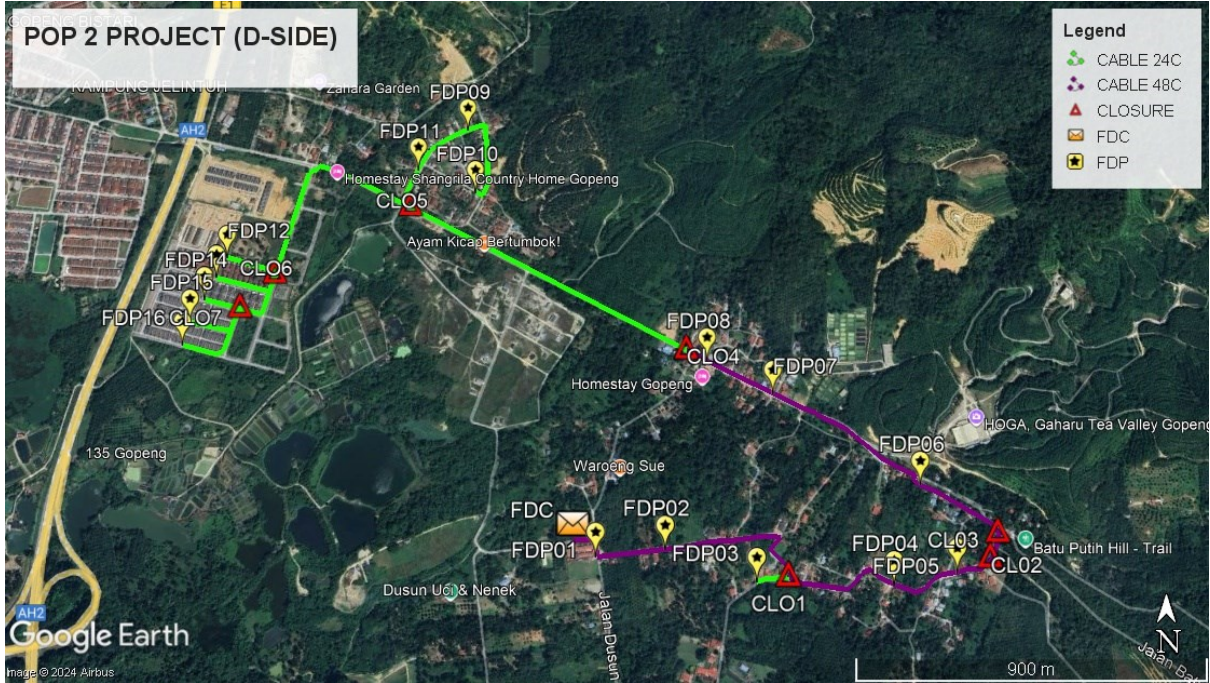
Local Authority Summary

1. Daerah Kampar

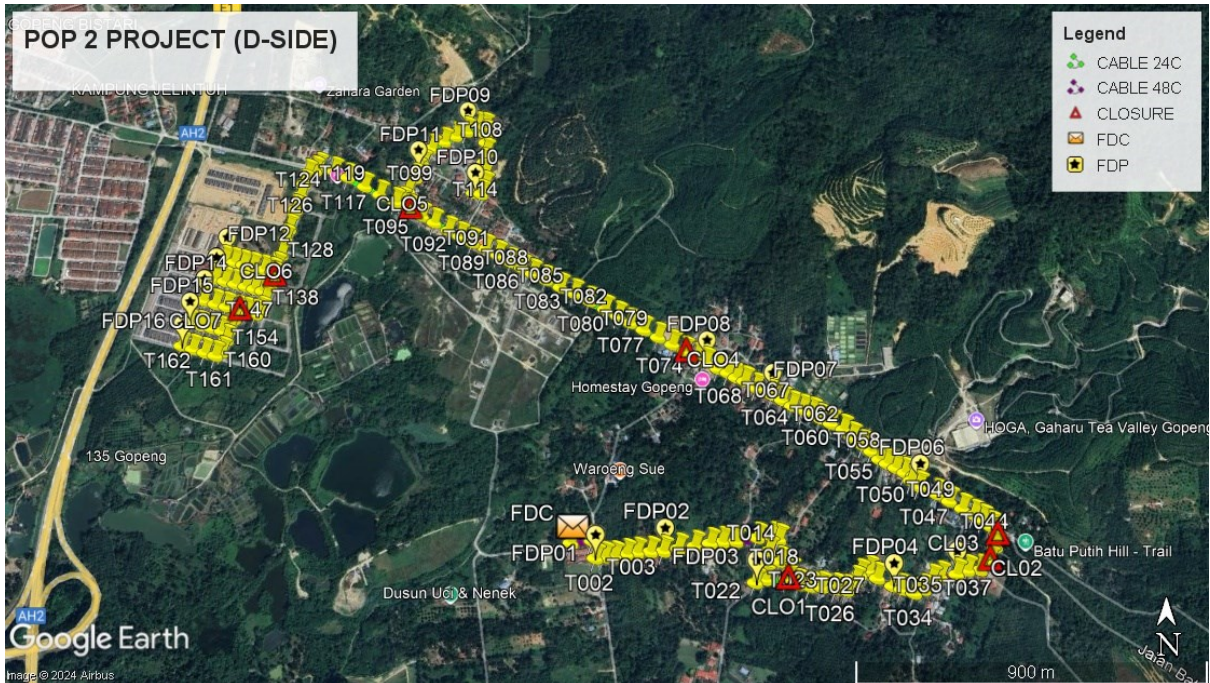
Bil	Items	Owner	Quantity	Distance(m)
1	HDD	JKR	-	-
		Majlis	-	-
		Estate / Private Land	-	-
2	New Pole	JKR	-	-
		Majlis	165pcs	4200m
		Estate / Private Land	-	-
3	Existing TNB Pole	JKR	-	-
		Majlis	-	-
		Estate / Private Land	-	-
Total				4200m

Site Plan – KMZ (Overview site area)

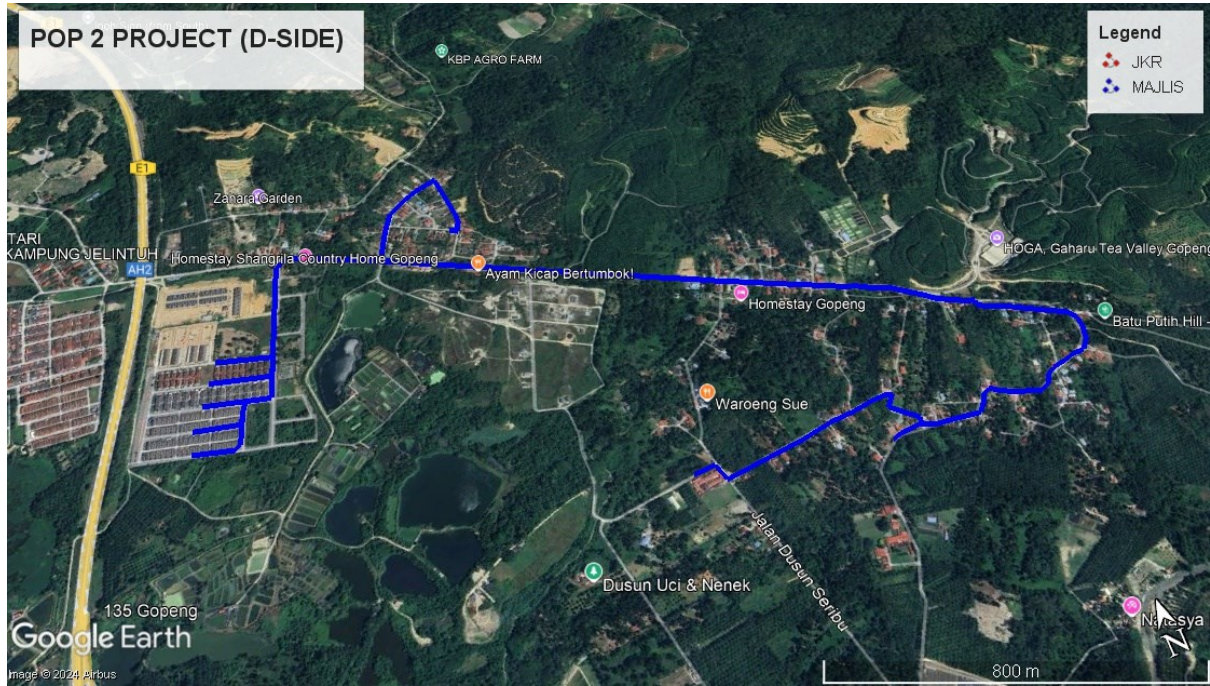
Proposed FDP and Closure



Proposed New Pole



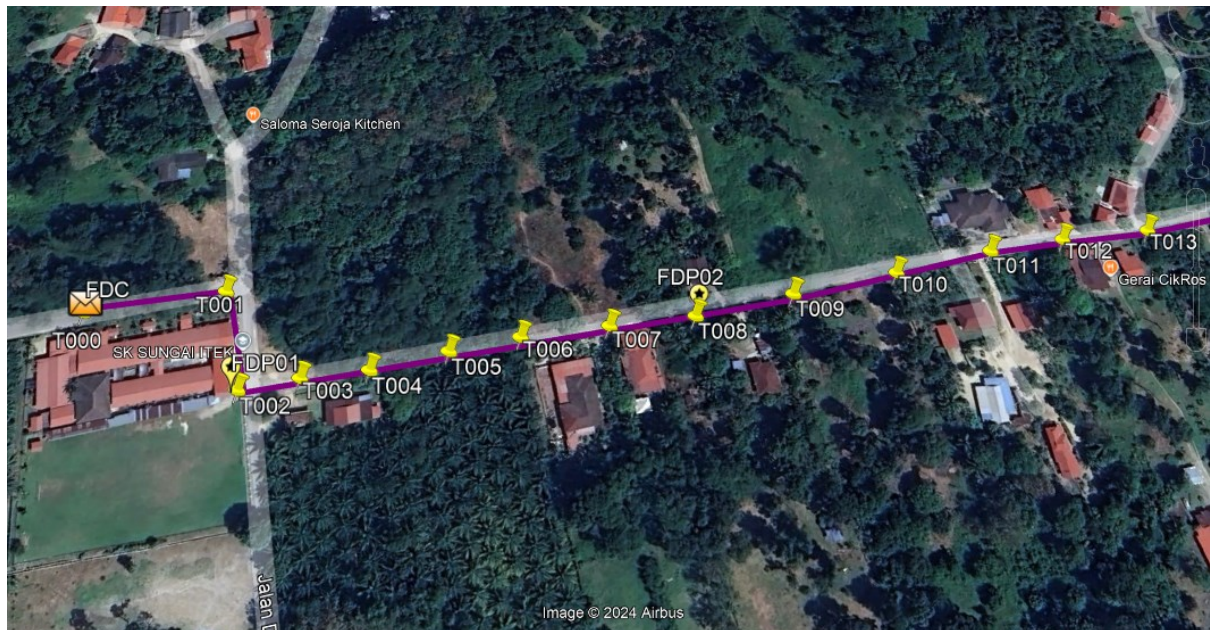
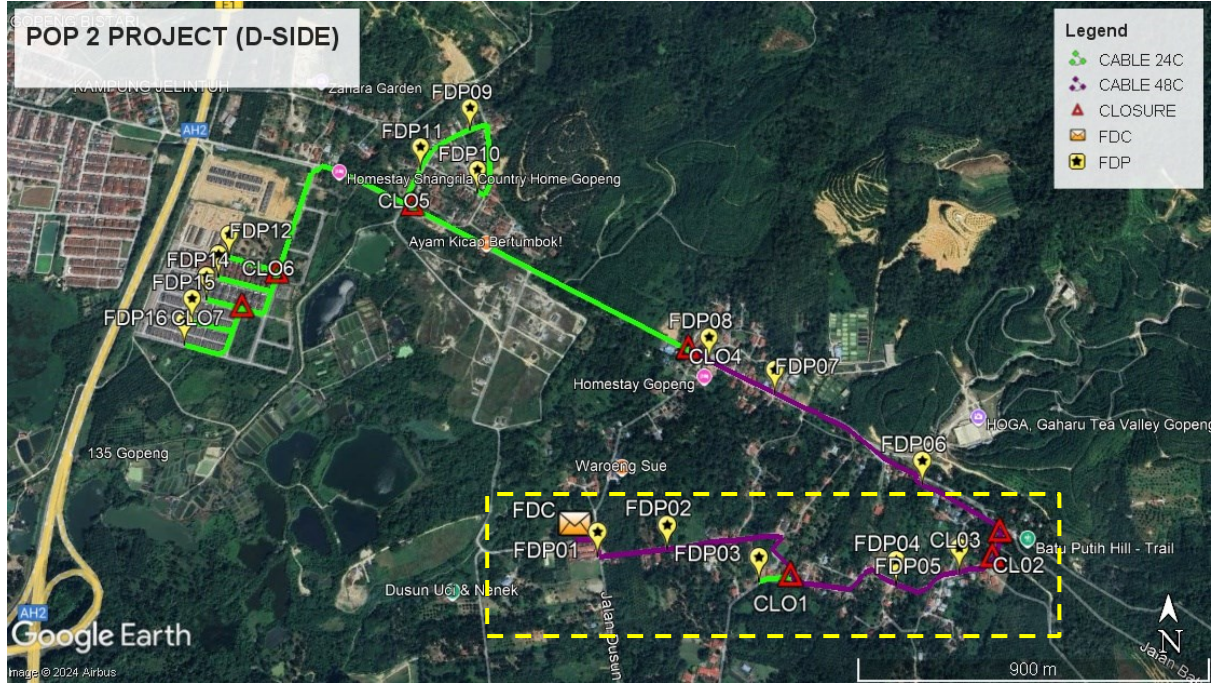
Site Plan – KMZ Routing (All Local Authority)



Blue Colour – Majlis Perbandaran Kampar

Site Plan – KMZ Routing (All site area)

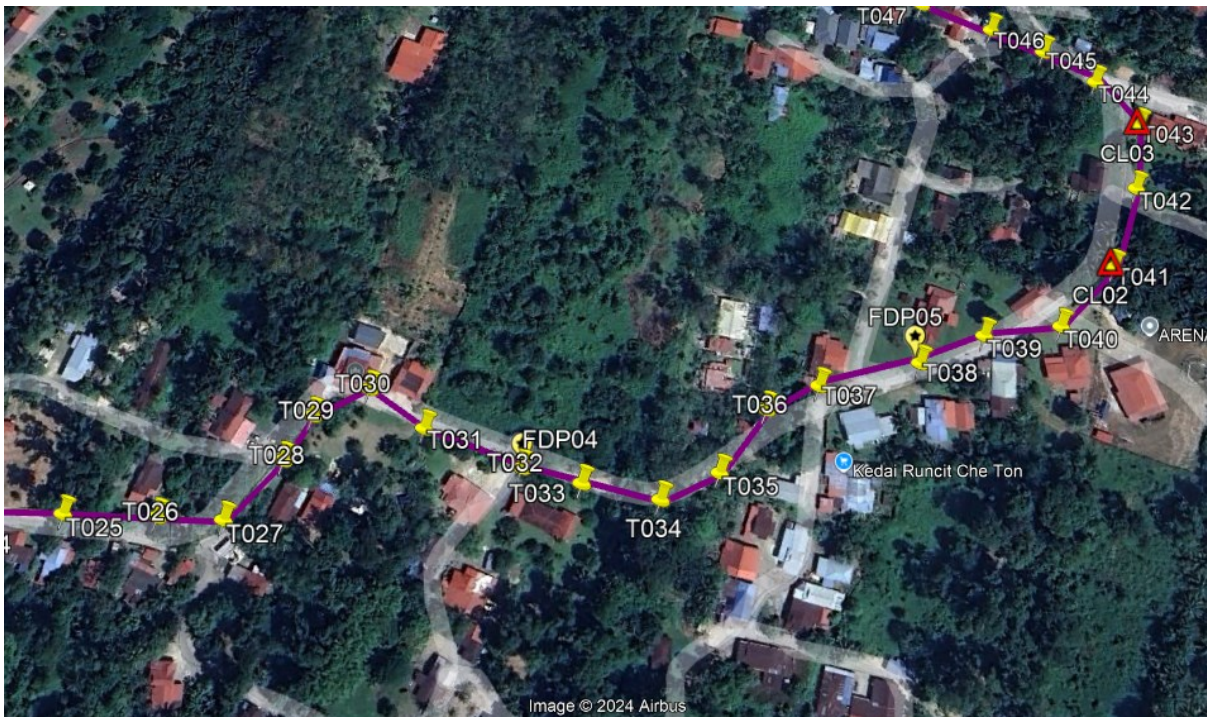
Route 1



Route 1.1

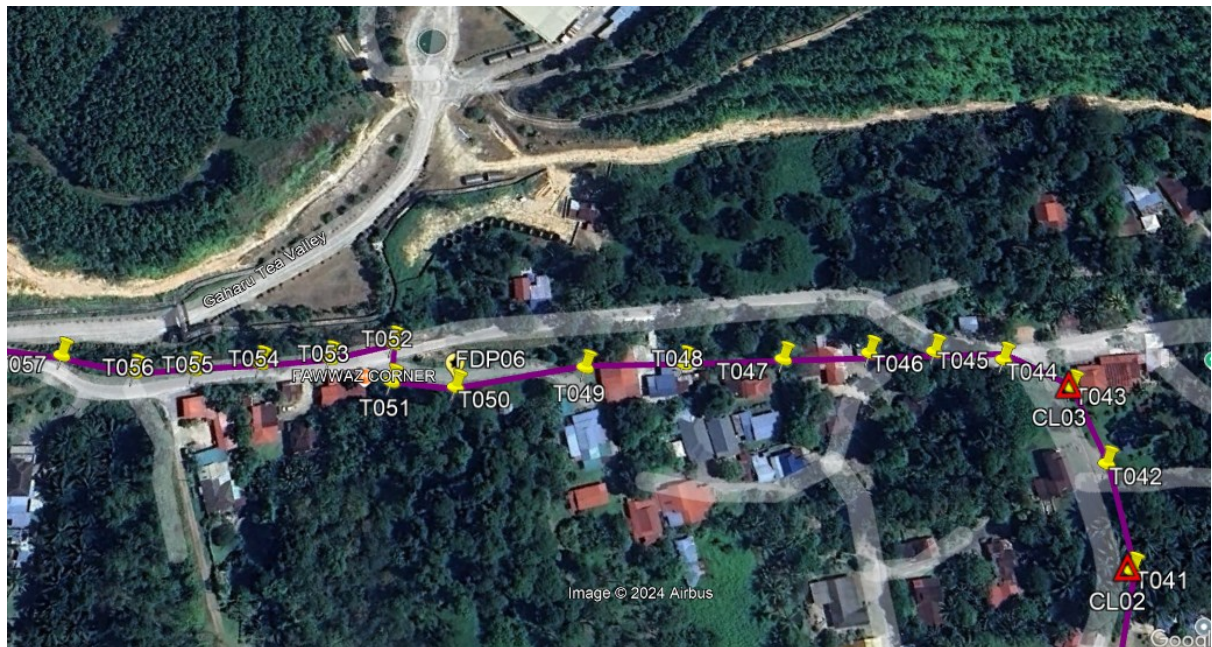
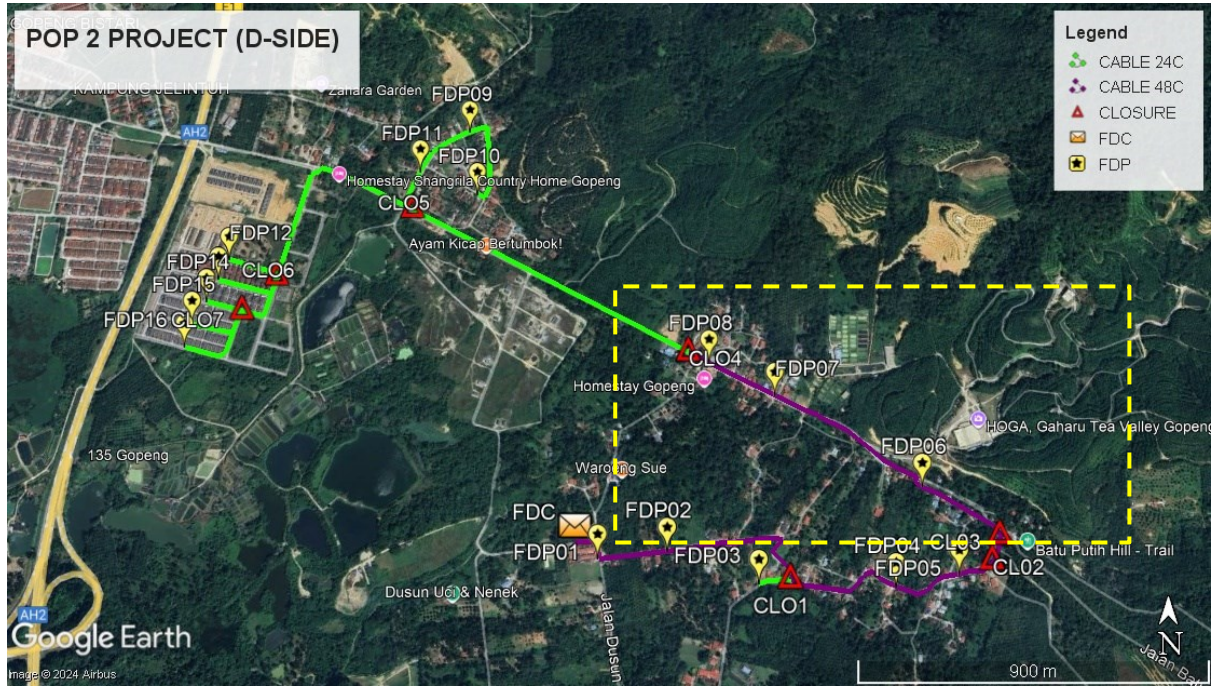


Route 1.2



Route 1.3

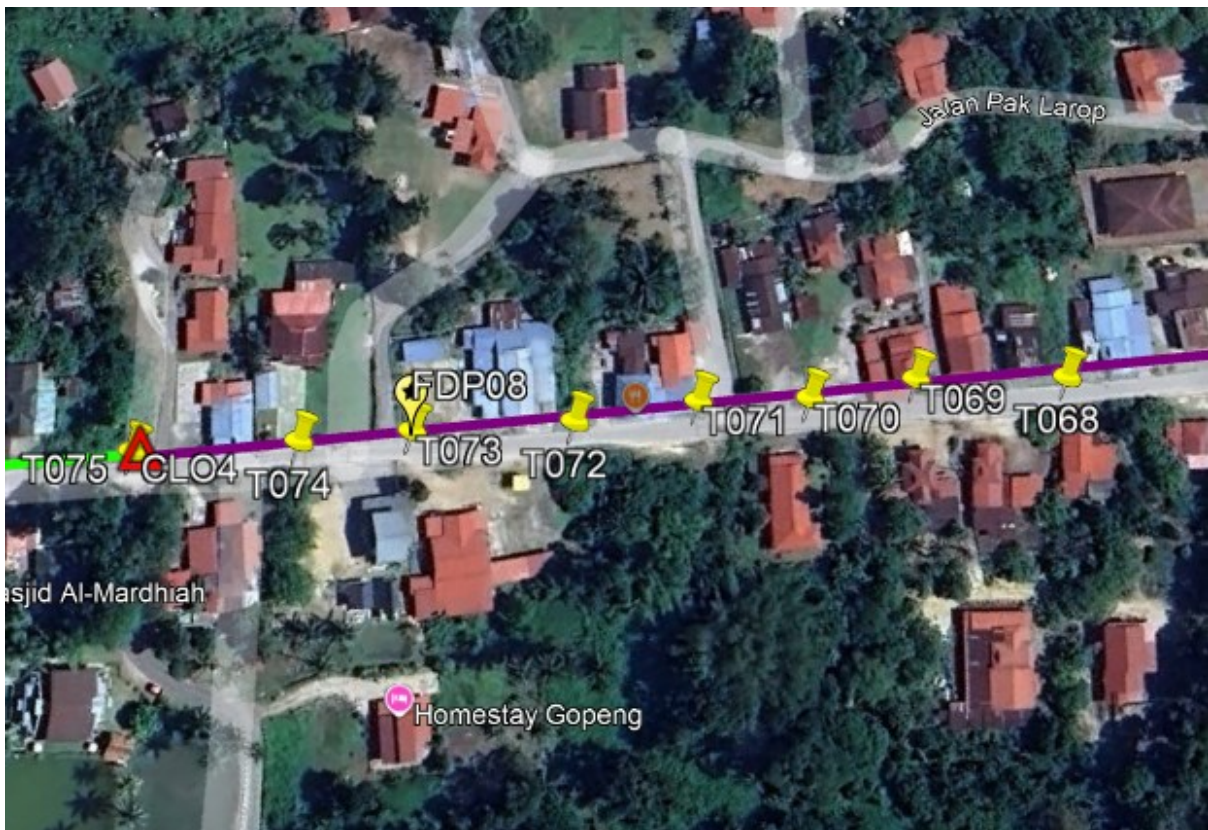
Route 2



Route 2.1

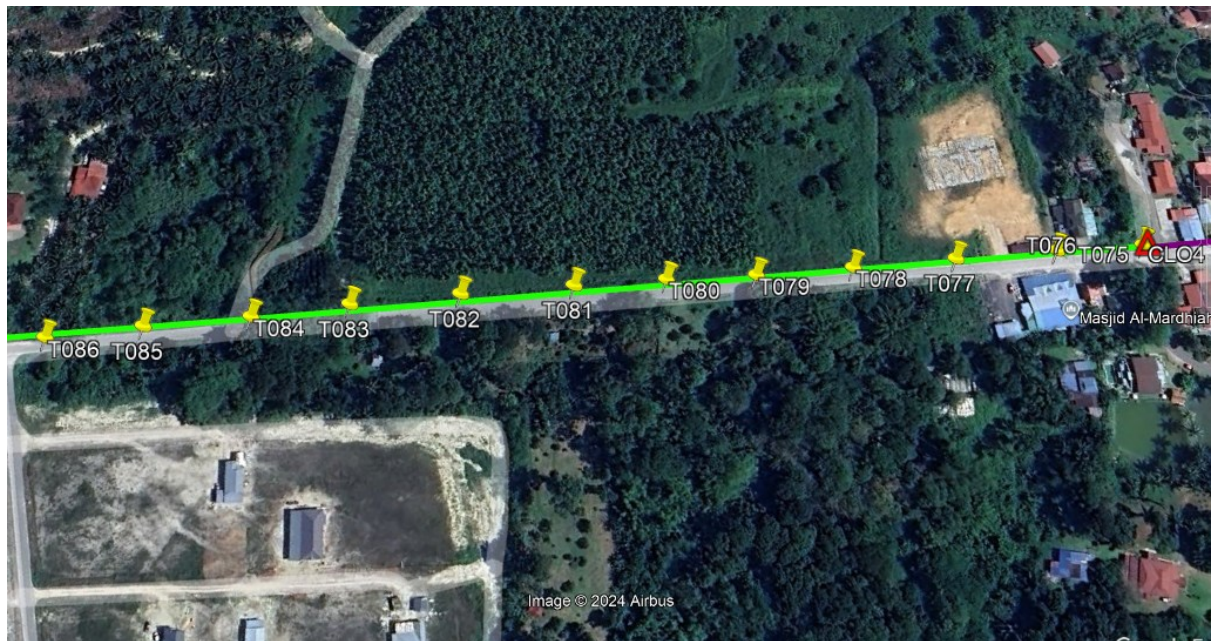
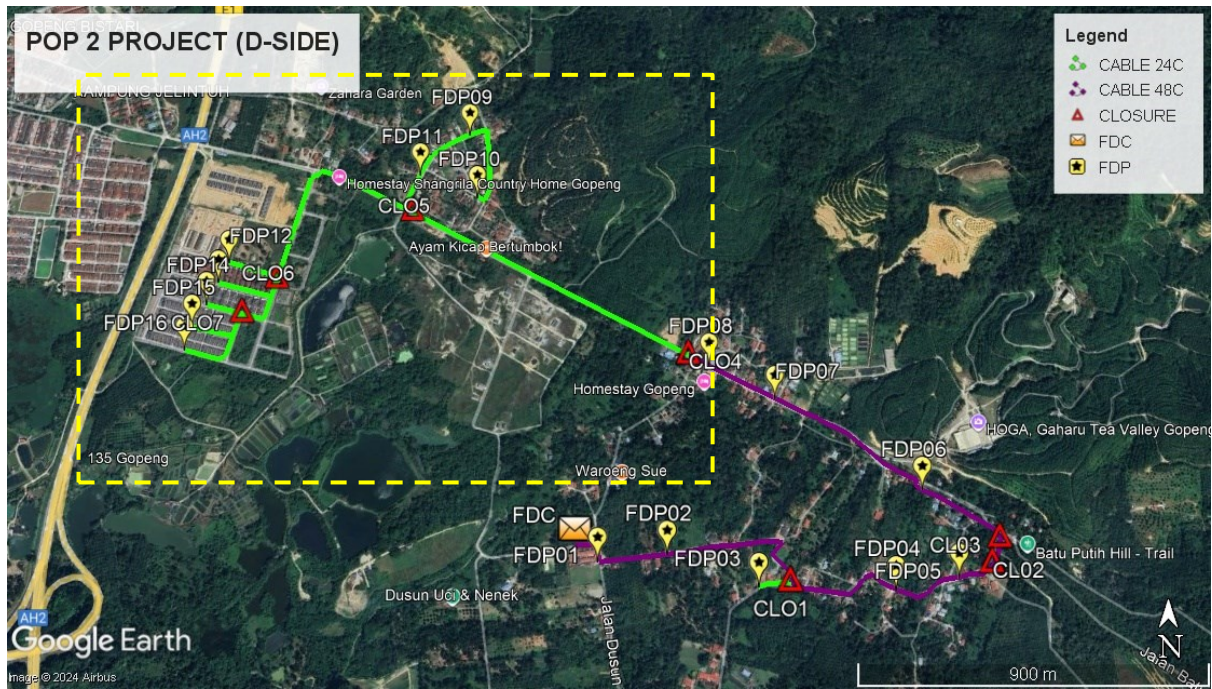


Route 2.2

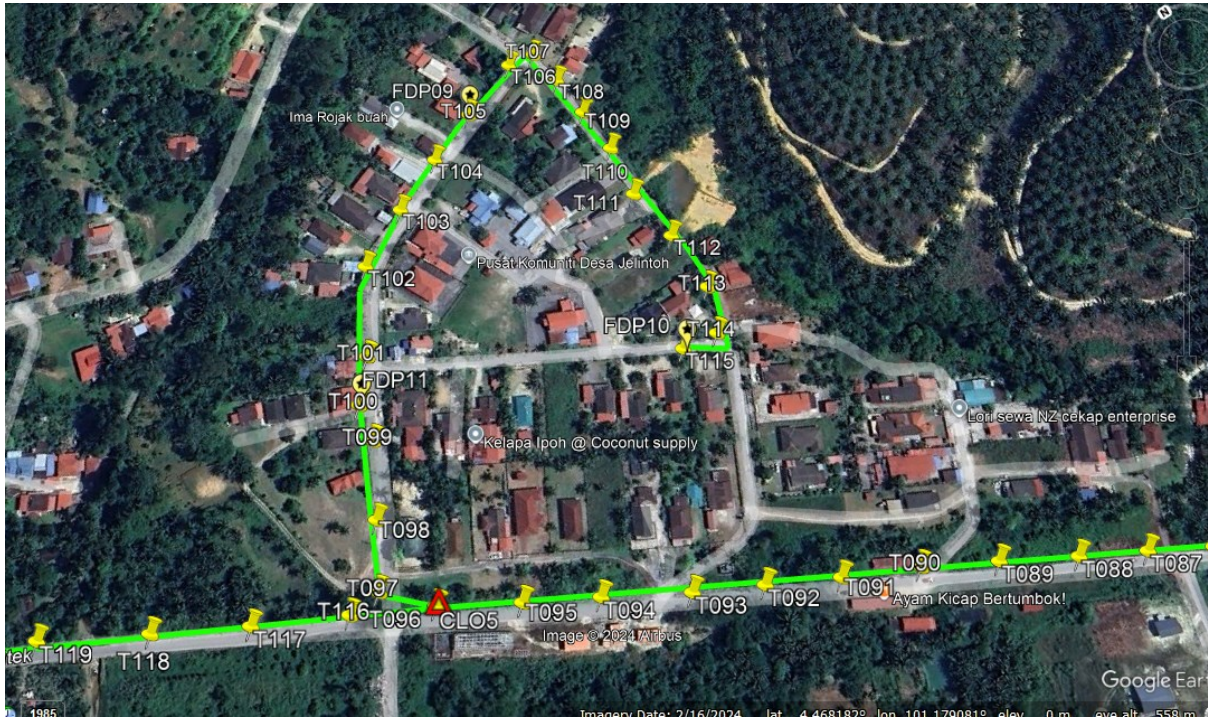


Route 2.3

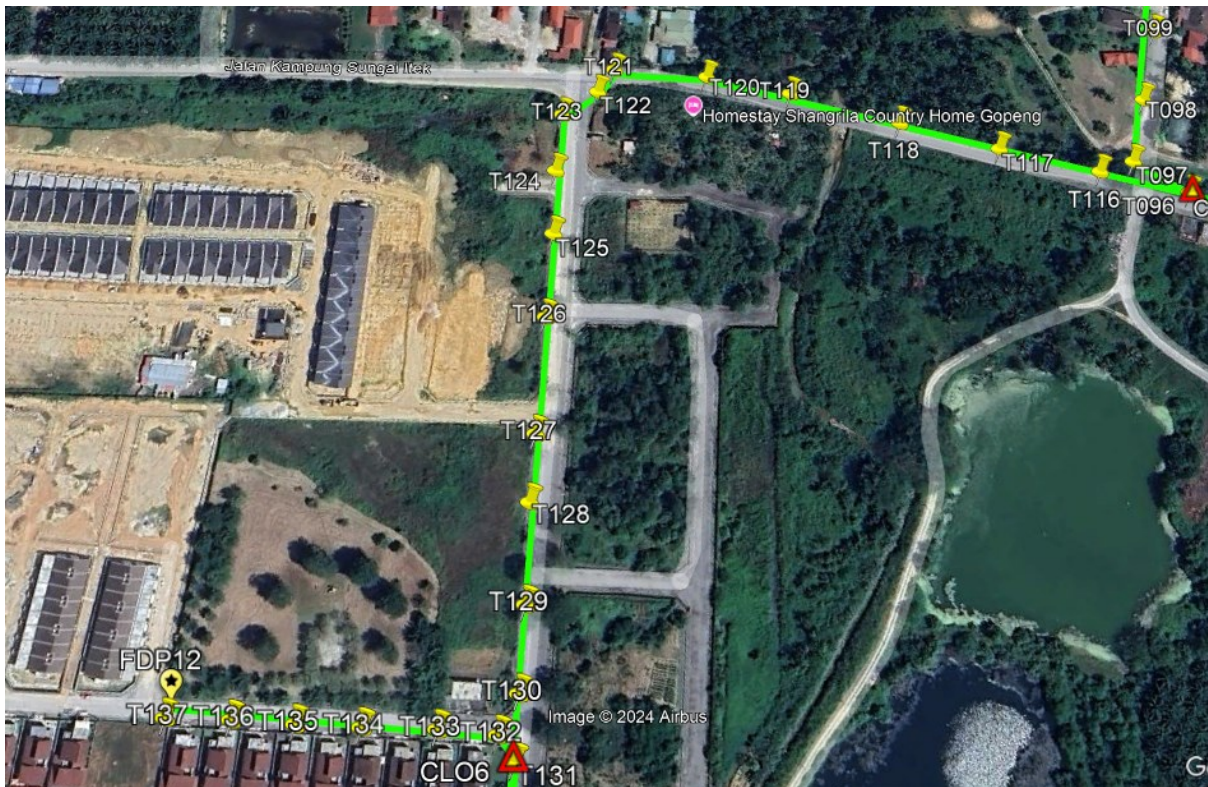
Route 3



Route 3.1



Route 3.2

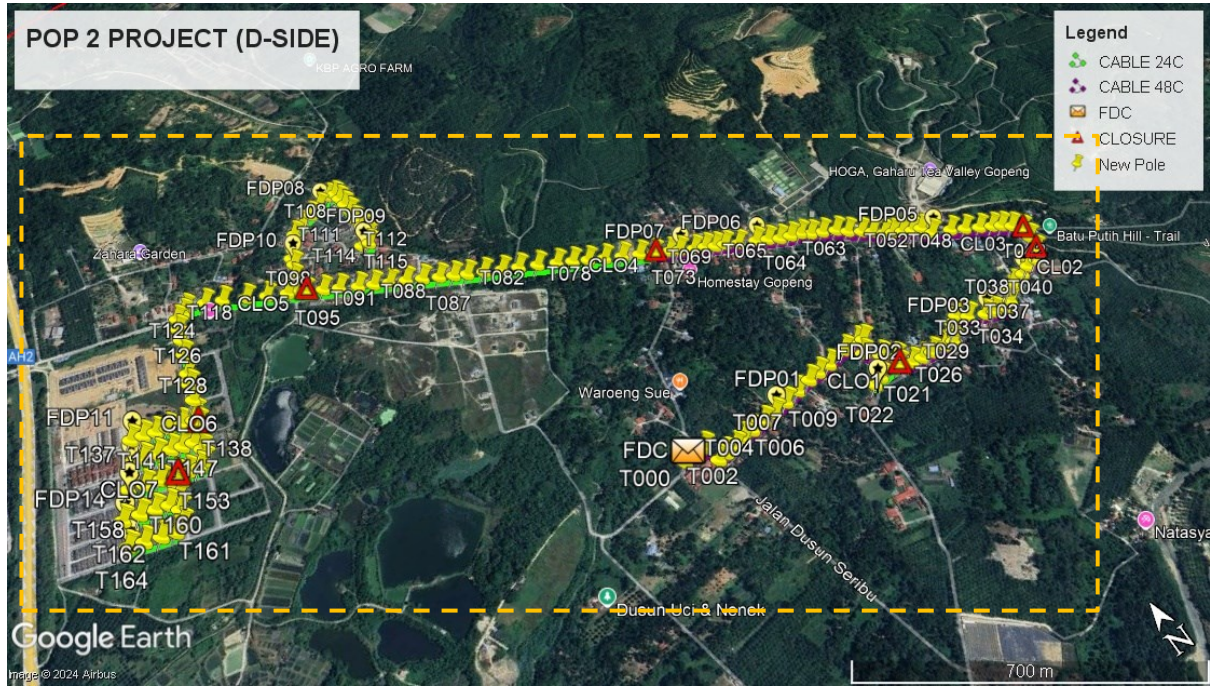


Route 3.3



Route 3.4

Site Plan – KMZ Routing (Proposed new Pole)



Overall Pole (Proposed New)

No.	Pole & Manhole ID	Distance	Latitude	Longitude	Local Authority
1	T000	0.00	4.456241449	101.1833045	Majlis Perbandaran Kampar
2	T001	56.27	4.456286883	101.1838079	Majlis Perbandaran Kampar
3	T002	45.27	4.455886772	101.1838804	Majlis Perbandaran Kampar
4	T003	23.96	4.455914993	101.1840938	Majlis Perbandaran Kampar
5	T004	26.61	4.455927123	101.1843326	Majlis Perbandaran Kampar
6	T005	31.26	4.455978205	101.1846087	Majlis Perbandaran Kampar
7	T006	28.44	4.456014622	101.1848616	Majlis Perbandaran Kampar
8	T007	35.35	4.456033859	101.1851785	Majlis Perbandaran Kampar
9	T008	34.50	4.456048991	101.1854881	Majlis Perbandaran Kampar
10	T009	40.93	4.456111911	101.1858503	Majlis Perbandaran Kampar
11	T010	43.89	4.456169791	101.1862403	Majlis Perbandaran Kampar
12	T011	41.20	4.456233925	101.1866049	Majlis Perbandaran Kampar
13	T012	31.23	4.456261798	101.1868884	Majlis Perbandaran Kampar
14	T013	36.44	4.456275543	101.187211	Majlis Perbandaran Kampar
15	T014	57.72	4.45636152	101.1877224	Majlis Perbandaran Kampar
16	T015	41.75	4.456372595	101.1880973	Majlis Perbandaran Kampar
17	T016	16.02	4.456323656	101.1882326	Majlis Perbandaran Kampar
18	T017	40.47	4.456059059	101.1879833	Majlis Perbandaran Kampar
19	T018	40.72	4.455807568	101.1882489	Majlis Perbandaran Kampar
20	T019	36.05	4.455577914	101.1884772	Majlis Perbandaran Kampar
21	T020	20.44	4.455413864	101.1883947	Majlis Perbandaran Kampar
22	T021	58.13	4.455398405	101.1878727	Majlis Perbandaran Kampar



PROJEK PENYEDIAAN DAN PENYELENGGARAAN POINT OF PRESENCE (POP) FASA 2: HAB INFRASTRUKTUR GENTIAN OPTIK BERHAMPIRAN DENGAN SEKOLAH, KAWASAN PERINDUSTRIAN, PREMIS KERAJAAN DAN KOMUNITI SEKITARNYA OLEH KEMENTERIAN KOMUNIKASI MALAYSIA - ZON UTARA (KKMM.400-11/17/132(1))



23	T022	26.67	4.455331587	101.1876426	Majlis Perbandaran Kampar
24	T023	113.89	4.455285029	101.1886646	Majlis Perbandaran Kampar
25	T024	29.85	4.455241302	101.1889292	Majlis Perbandaran Kampar
26	T025	29.60	4.455223855	101.1891945	Majlis Perbandaran Kampar
27	T026	38.27	4.455184121	101.189536	Majlis Perbandaran Kampar
28	T027	27.00	4.455151092	101.1897763	Majlis Perbandaran Kampar
29	T028	33.32	4.455355098	101.1899954	Majlis Perbandaran Kampar
30	T029	21.79	4.455515299	101.1901078	Majlis Perbandaran Kampar
31	T030	25.64	4.455600329	101.1903218	Majlis Perbandaran Kampar
32	T031	28.94	4.455430872	101.190519	Majlis Perbandaran Kampar
33	T032	43.78	4.455250833	101.1908687	Majlis Perbandaran Kampar
34	T033	25.42	4.455174013	101.1910838	Majlis Perbandaran Kampar
35	T034	32.79	4.455088677	101.1913657	Majlis Perbandaran Kampar
36	T035	26.77	4.4551695	101.1915921	Majlis Perbandaran Kampar
37	T036	33.36	4.455393011	101.1917918	Majlis Perbandaran Kampar
38	T037	24.60	4.455466433	101.1920002	Majlis Perbandaran Kampar
39	T038	43.86	4.455521807	101.1923903	Majlis Perbandaran Kampar
40	T039	30.44	4.455608042	101.1926498	Majlis Perbandaran Kampar
41	T040	33.02	4.455619239	101.1929462	Majlis Perbandaran Kampar
42	T041	36.66	4.455837953	101.1931924	Majlis Perbandaran Kampar
43	T042	39.26	4.456155517	101.1933459	Majlis Perbandaran Kampar
44	T043	30.75	4.456423488	101.1934129	Majlis Perbandaran Kampar
45	T044	27.39	4.45662751	101.1932754	Majlis Perbandaran Kampar
46	T045	26.56	4.456779427	101.1930914	Majlis Perbandaran Kampar



PROJEK PENYEDIAAN DAN PENYELENGGARAAN POINT OF PRESENCE (POP) FASA 2: HAB INFRASTRUKTUR GENTIAN OPTIK BERHAMPIRAN DENGAN SEKOLAH, KAWASAN PERINDUSTRIAN, PREMIS KERAJAAN DAN KOMUNITI SEKITARNYA OLEH KEMENTERIAN KOMUNIKASI MALAYSIA - ZON UTARA (KKMM.400-11/17/132(1))



47	T046	25.16	4.456896675	101.1928982	Majlis Perbandaran Kampar
48	T047	33.46	4.457039989	101.192634	Majlis Perbandaran Kampar
49	T048	38.46	4.457213632	101.1923353	Majlis Perbandaran Kampar
50	T049	37.88	4.457384608	101.1920411	Majlis Perbandaran Kampar
51	T050	50.11	4.457565372	101.1916289	Majlis Perbandaran Kampar
52	T051	24.84	4.457701983	101.1914525	Majlis Perbandaran Kampar
53	T052	14.95	4.45781603	101.1915235	Majlis Perbandaran Kampar
54	T053	24.86	4.457888805	101.1913123	Majlis Perbandaran Kampar
55	T054	26.65	4.458002353	101.1911016	Majlis Perbandaran Kampar
56	T055	25.37	4.458106701	101.1908989	Majlis Perbandaran Kampar
57	T056	22.74	4.458208842	101.190722	Majlis Perbandaran Kampar
58	T057	29.56	4.458398309	101.1905359	Majlis Perbandaran Kampar
59	T058	28.21	4.458553242	101.1903353	Majlis Perbandaran Kampar
60	T059	35.00	4.45874083	101.190083	Majlis Perbandaran Kampar
61	T060	30.33	4.458929269	101.1898862	Majlis Perbandaran Kampar
62	T061	36.49	4.459071229	101.1895908	Majlis Perbandaran Kampar
63	T062	31.25	4.459192138	101.1893375	Majlis Perbandaran Kampar
64	T063	26.60	4.459340348	101.18915	Majlis Perbandaran Kampar
65	T064	27.05	4.459415602	101.188919	Majlis Perbandaran Kampar
66	T065	29.47	4.459500135	101.1886681	Majlis Perbandaran Kampar
67	T066	30.82	4.45964176	101.1884302	Majlis Perbandaran Kampar
68	T067	31.15	4.459772135	101.1881826	Majlis Perbandaran Kampar
69	T068	46.85	4.459944463	101.1877987	Majlis Perbandaran Kampar
70	T069	35.27	4.460111447	101.1875295	Majlis Perbandaran Kampar



PROJEK PENYEDIAAN DAN PENYELENGGARAAN POINT OF PRESENCE (POP) FASA 2: HAB INFRASTRUKTUR GENTIAN OPTIK BERHAMPIRAN DENGAN SEKOLAH, KAWASAN PERINDUSTRIAN, PREMIS KERAJAAN DAN KOMUNITI SEKITARNYA OLEH KEMENTERIAN KOMUNIKASI MALAYSIA - ZON UTARA (KKMM.400-11/17/132(1))



71	T070	25.18	4.460195902	101.1873196	Majlis Perbandaran Kampar
72	T071	26.04	4.460316372	101.1871191	Majlis Perbandaran Kampar
73	T072	28.97	4.460418679	101.1868798	Majlis Perbandaran Kampar
74	T073	37.69	4.46058335	101.186584	Majlis Perbandaran Kampar
75	T074	26.17	4.460690546	101.1863748	Majlis Perbandaran Kampar
76	T075	38.32	4.460857248	101.1860736	Majlis Perbandaran Kampar
77	T076	37.88	4.461020024	101.1857748	Majlis Perbandaran Kampar
78	T077	44.35	4.461205991	101.1854226	Majlis Perbandaran Kampar
79	T078	44.85	4.461391359	101.1850649	Majlis Perbandaran Kampar
80	T079	42.21	4.461568828	101.1847298	Majlis Perbandaran Kampar
81	T080	38.88	4.461742369	101.1844267	Majlis Perbandaran Kampar
82	T081	39.90	4.461914285	101.1841122	Majlis Perbandaran Kampar
83	T082	48.83	4.462121153	101.1837254	Majlis Perbandaran Kampar
84	T083	47.47	4.462315484	101.1833458	Majlis Perbandaran Kampar
85	T084	42.19	4.46247529	101.1830021	Majlis Perbandaran Kampar
86	T085	45.75	4.462664301	101.1826372	Majlis Perbandaran Kampar
87	T086	41.30	4.462824254	101.1823025	Majlis Perbandaran Kampar
88	T087	34.12	4.462972685	101.1820343	Majlis Perbandaran Kampar
89	T088	35.88	4.463124612	101.18175	Majlis Perbandaran Kampar
90	T089	41.23	4.46330545	101.1814268	Majlis Perbandaran Kampar
91	T090	40.61	4.463480235	101.1811066	Majlis Perbandaran Kampar
92	T091	41.16	4.463637424	101.1807719	Majlis Perbandaran Kampar
93	T092	39.25	4.463797722	101.1804579	Majlis Perbandaran Kampar
94	T093	37.32	4.463949211	101.1801588	Majlis Perbandaran Kampar

95	T094	46.43	4.464156001	101.1797966	Majlis Perbandaran Kampar
96	T095	39.88	4.46432812	101.1794824	Majlis Perbandaran Kampar
97	T096	43.66	4.464526441	101.179144	Majlis Perbandaran Kampar
98	T097	30.33	4.464721251	101.1789535	Majlis Perbandaran Kampar
99	T098	36.68	4.465013986	101.1791048	Majlis Perbandaran Kampar
100	T099	42.09	4.465351784	101.1792746	Majlis Perbandaran Kampar
101	T100	47.00	4.46573449	101.1794529	Majlis Perbandaran Kampar
102	T101	52.55	4.466151221	101.1796747	Majlis Perbandaran Kampar
103	T102	38.60	4.466326482	101.1799738	Majlis Perbandaran Kampar
104	T103	36.09	4.466476241	101.1802614	Majlis Perbandaran Kampar
105	T104	34.61	4.466607821	101.1805431	Majlis Perbandaran Kampar
106	T105	39.66	4.466748077	101.1808705	Majlis Perbandaran Kampar
107	T106	16.00	4.466733568	101.1810135	Majlis Perbandaran Kampar
108	T107	22.50	4.466533028	101.1810384	Majlis Perbandaran Kampar
109	T108	25.99	4.466299979	101.1810518	Majlis Perbandaran Kampar
110	T109	28.38	4.466045252	101.1810623	Majlis Perbandaran Kampar
111	T110	31.76	4.465763067	101.1810203	Majlis Perbandaran Kampar
112	T111	33.21	4.465466818	101.1810555	Majlis Perbandaran Kampar
113	T112	36.18	4.465141778	101.1810544	Majlis Perbandaran Kampar
114	T113	27.23	4.464917651	101.1809565	Majlis Perbandaran Kampar
115	T114	241.98	4.464702052	101.1787935	Majlis Perbandaran Kampar
116	T115	49.69	4.46489972	101.1783933	Majlis Perbandaran Kampar
117	T116	50.39	4.465114785	101.177995	Majlis Perbandaran Kampar
118	T117	56.42	4.46536056	101.1775517	Majlis Perbandaran Kampar



PROJEK PENYEDIAAN DAN PENYELENGGARAAN POINT OF PRESENCE (POP) FASA 2: HAB INFRASTRUKTUR GENTIAN OPTIK BERHAMPIRAN DENGAN SEKOLAH, KAWASAN PERINDUSTRIAN, PREMIS KERAJAAN DAN KOMUNITI SEKITARNYA OLEH KEMENTERIAN KOMUNIKASI MALAYSIA - ZON UTARA (KKMM.400-11/17/132(1))



119	T118	42.85	4.465521526	101.1772021	Majlis Perbandaran Kampar
120	T119	46.86	4.465641785	101.1767987	Majlis Perbandaran Kampar
121	T120	15.38	4.465542648	101.1767024	Majlis Perbandaran Kampar
122	T121	22.02	4.465457125	101.1765241	Majlis Perbandaran Kampar
123	T122	31.79	4.465183405	101.1764426	Majlis Perbandaran Kampar
124	T123	34.46	4.464880808	101.1763771	Majlis Perbandaran Kampar
125	T124	43.64	4.464502362	101.176275	Majlis Perbandaran Kampar
126	T125	57.59	4.464002336	101.1761424	Majlis Perbandaran Kampar
127	T126	31.92	4.463725028	101.1760695	Majlis Perbandaran Kampar
128	T127	45.56	4.463324973	101.175983	Majlis Perbandaran Kampar
129	T128	37.59	4.462997706	101.1758999	Majlis Perbandaran Kampar
130	T129	27.80	4.462754947	101.1758413	Majlis Perbandaran Kampar
131	T130	13.06	4.462863844	101.1757976	Majlis Perbandaran Kampar
132	T131	25.56	4.462929259	101.1755775	Majlis Perbandaran Kampar
133	T132	31.80	4.462993196	101.1752991	Majlis Perbandaran Kampar
134	T133	27.83	4.463054186	101.1750567	Majlis Perbandaran Kampar
135	T134	27.03	4.463118238	101.1748225	Majlis Perbandaran Kampar
136	T135	27.88	4.463174347	101.1745784	Majlis Perbandaran Kampar
137	T136	152.87	4.46248767	101.1757676	Majlis Perbandaran Kampar
138	T137	40.33	4.462142653	101.1756572	Majlis Perbandaran Kampar
139	T138	27.06	4.462374247	101.1755835	Majlis Perbandaran Kampar
140	T139	24.61	4.462428712	101.1753692	Majlis Perbandaran Kampar
141	T140	25.12	4.462493892	101.1751532	Majlis Perbandaran Kampar
142	T141	30.46	4.462558897	101.1748874	Majlis Perbandaran Kampar

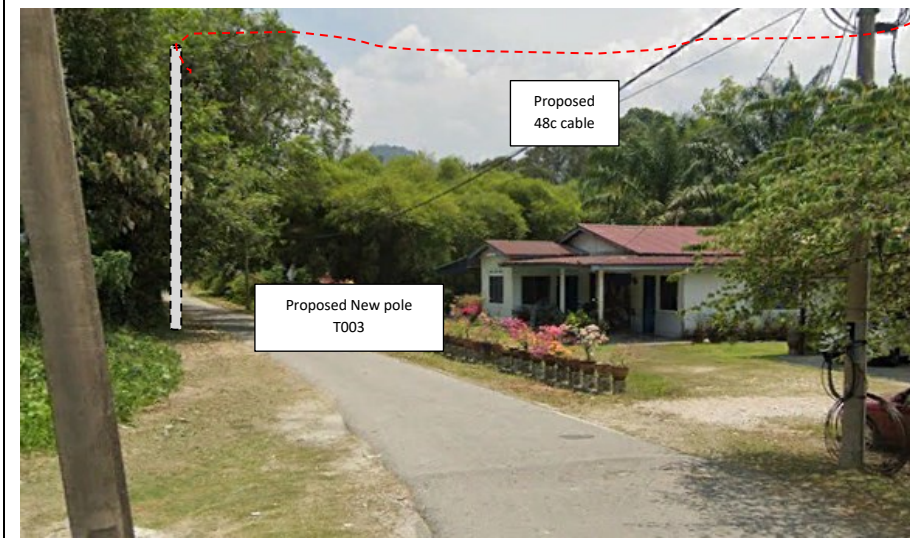
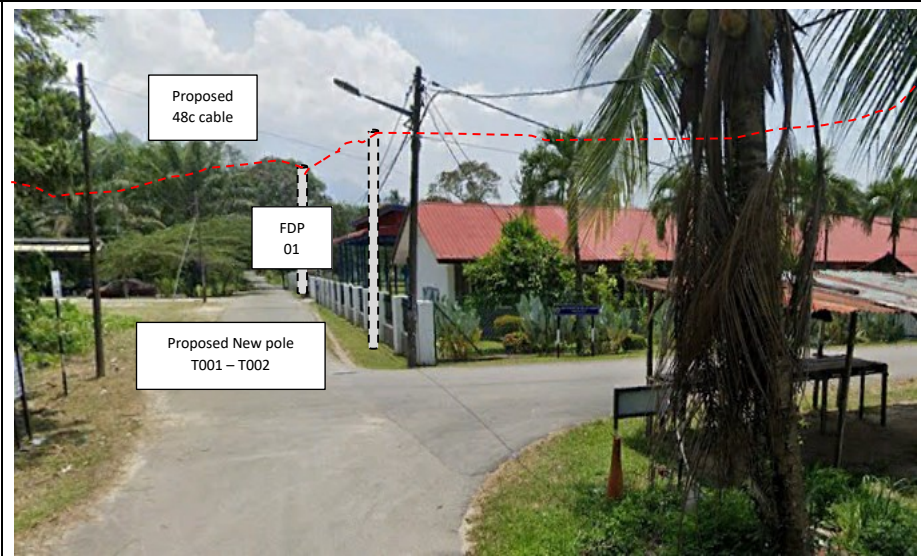
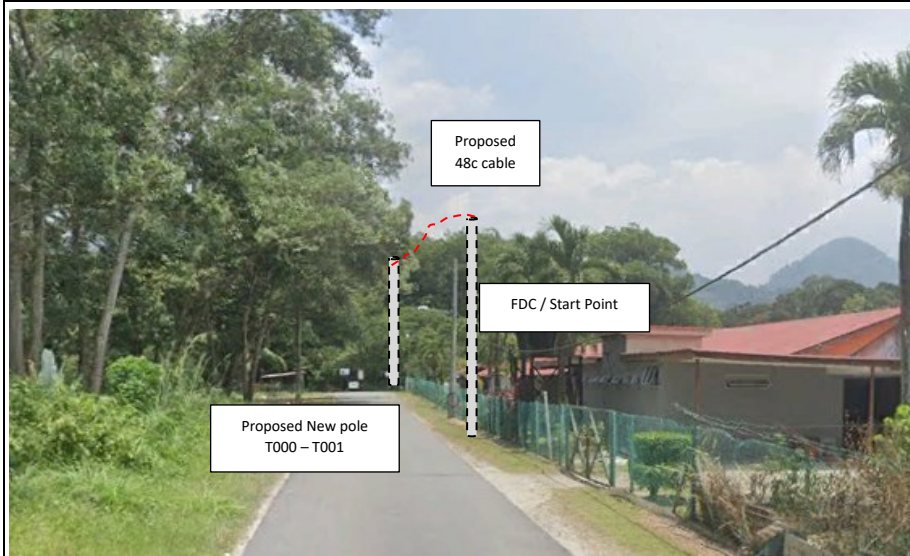


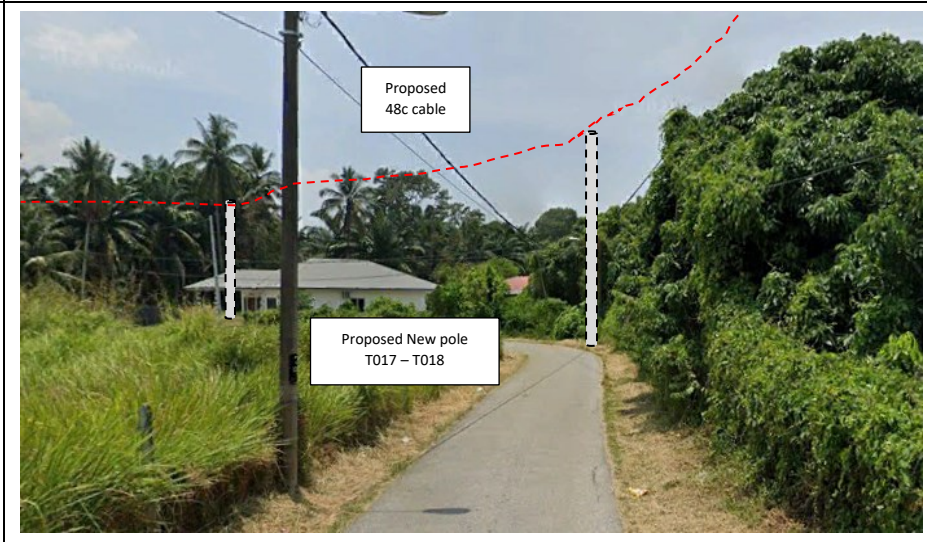
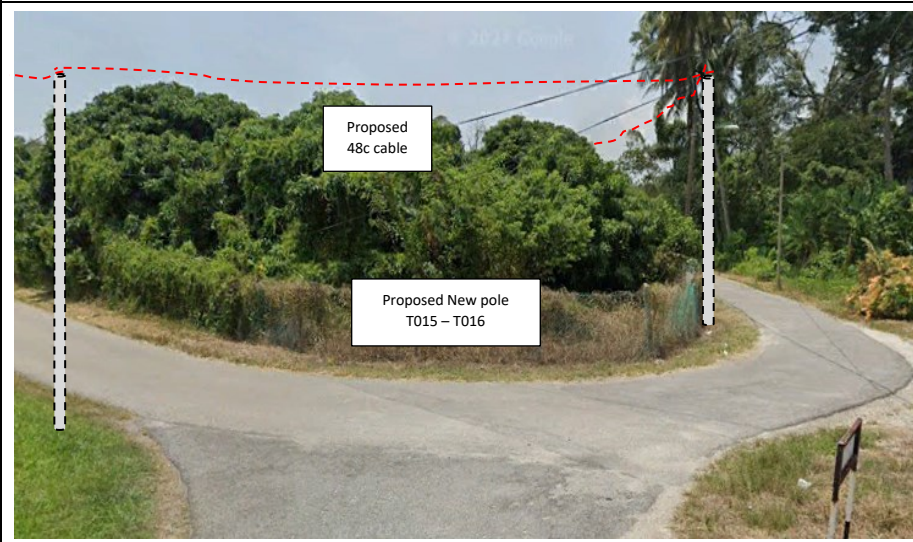
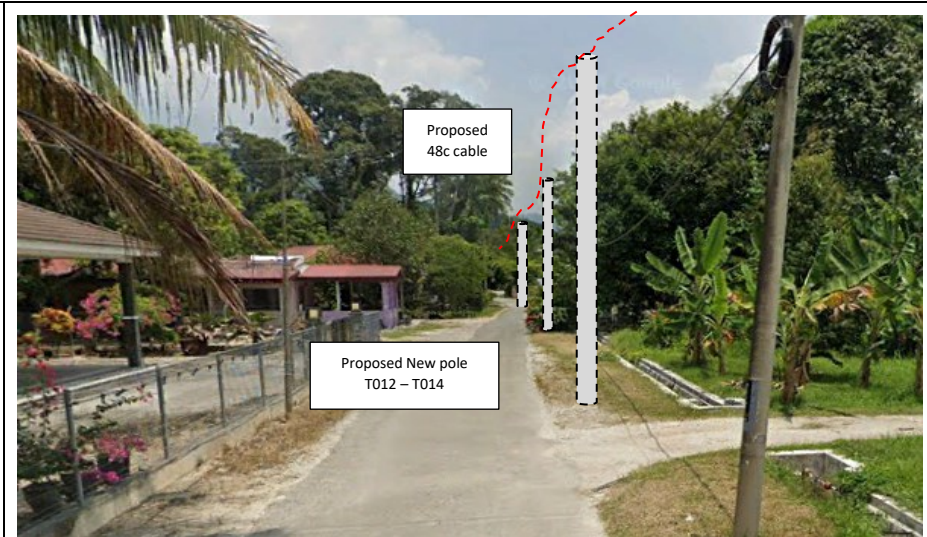
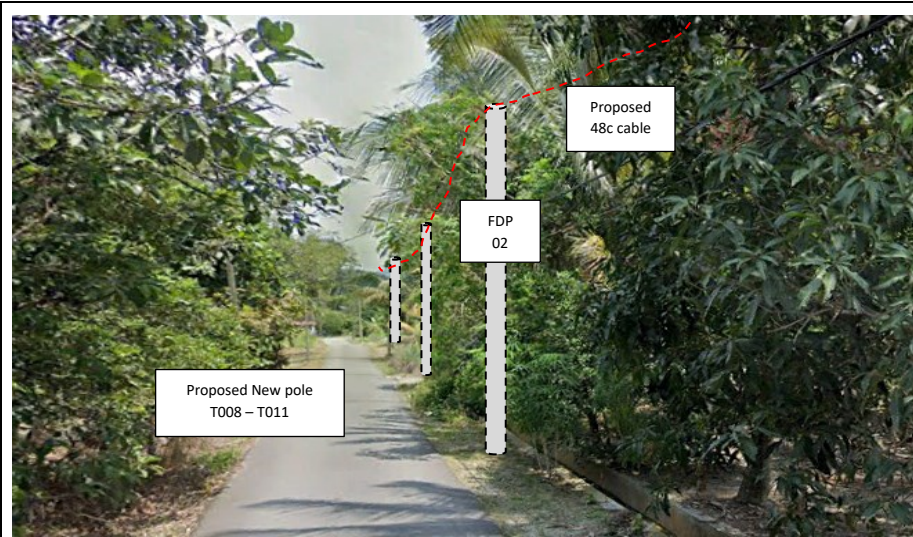
PROJEK PENYEDIAAN DAN PENYELENGGARAAN POINT OF PRESENCE (POP) FASA 2: HAB INFRASTRUKTUR GENTIAN OPTIK BERHAMPIRAN DENGAN SEKOLAH, KAWASAN PERINDUSTRIAN, PREMIS KERAJAAN DAN KOMUNITI SEKITARNYA OLEH KEMENTERIAN KOMUNIKASI MALAYSIA - ZON UTARA (KKMM.400-11/17/132(1))

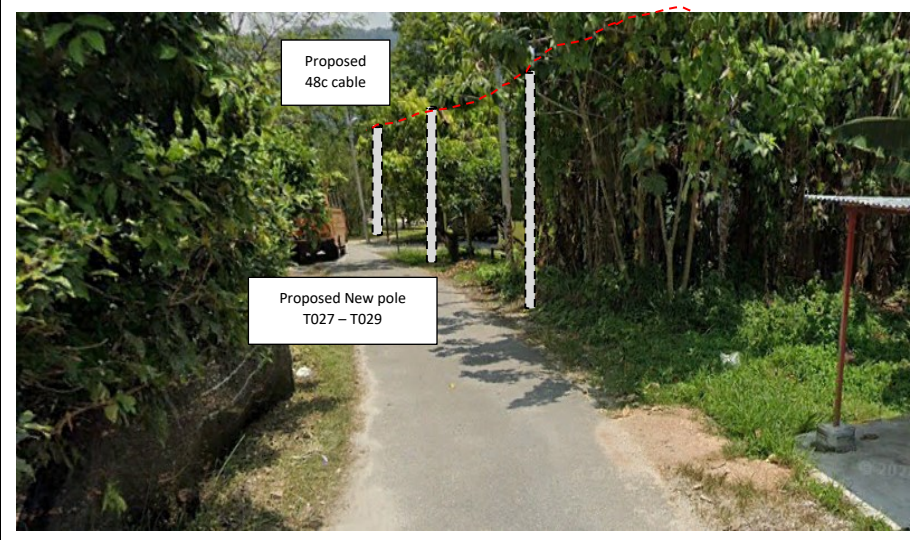
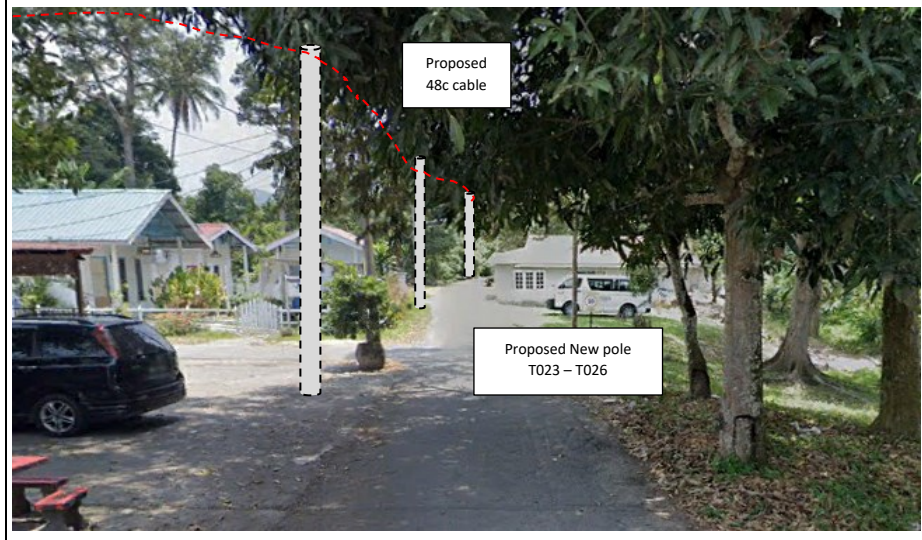
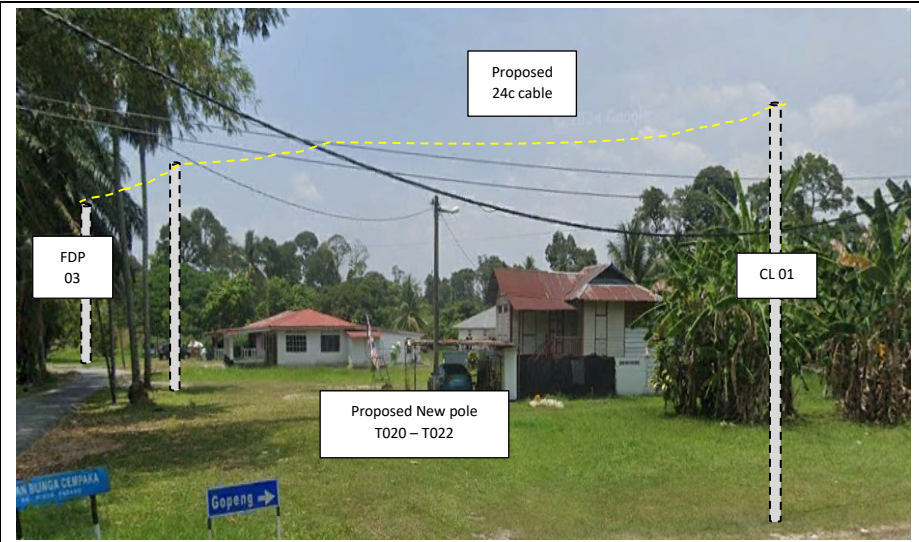
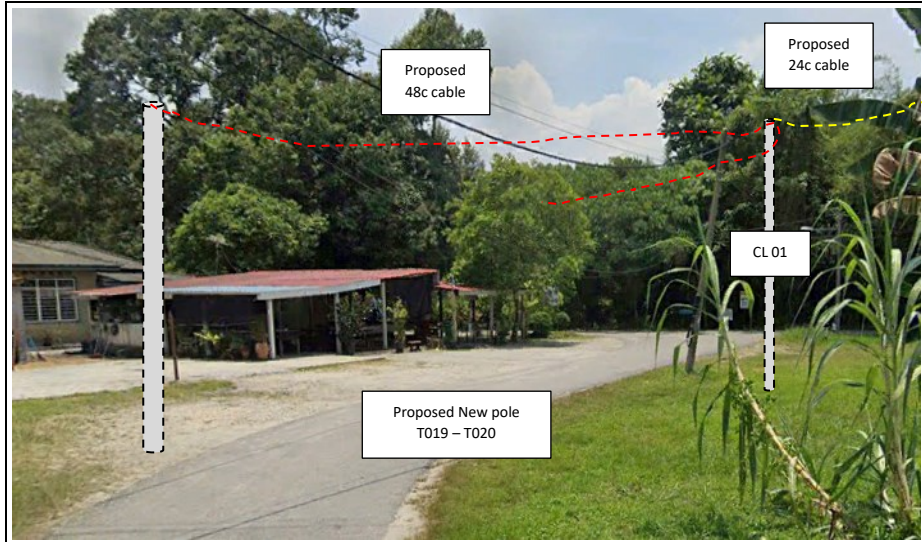


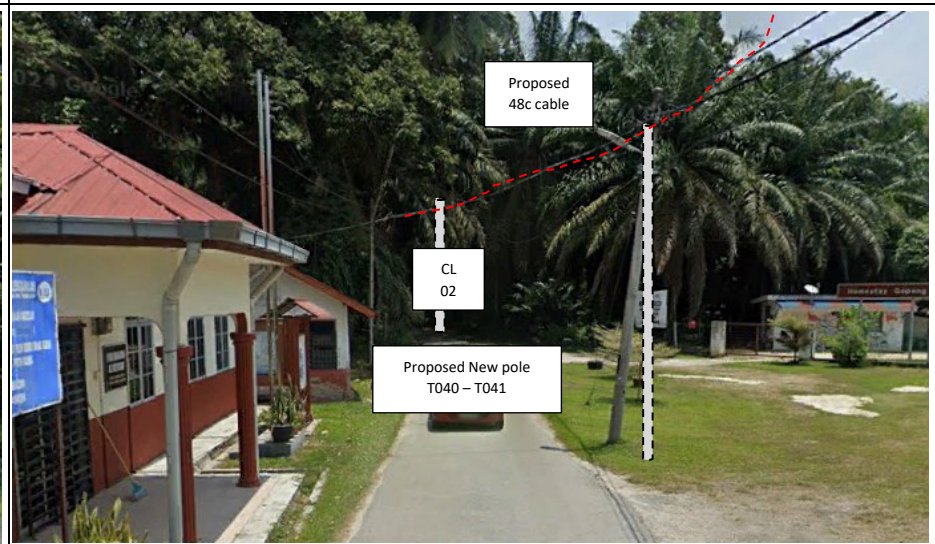
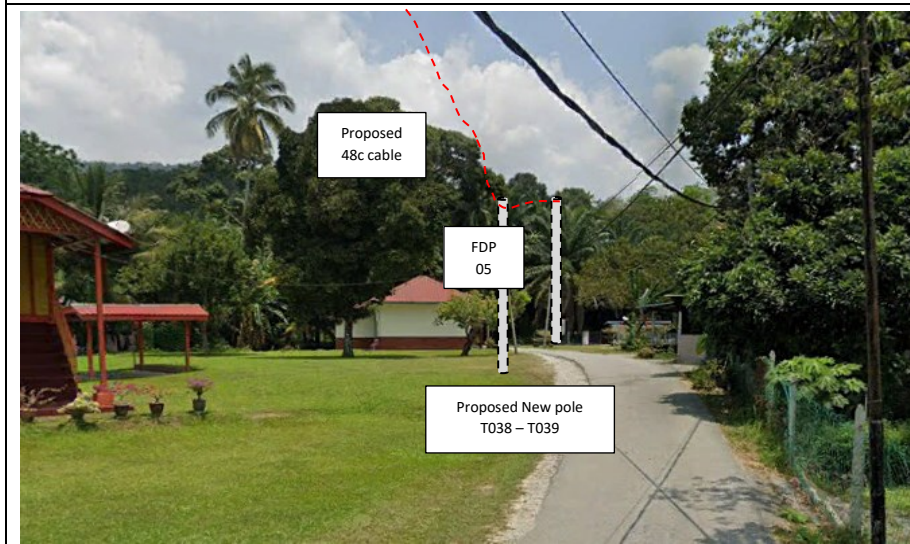
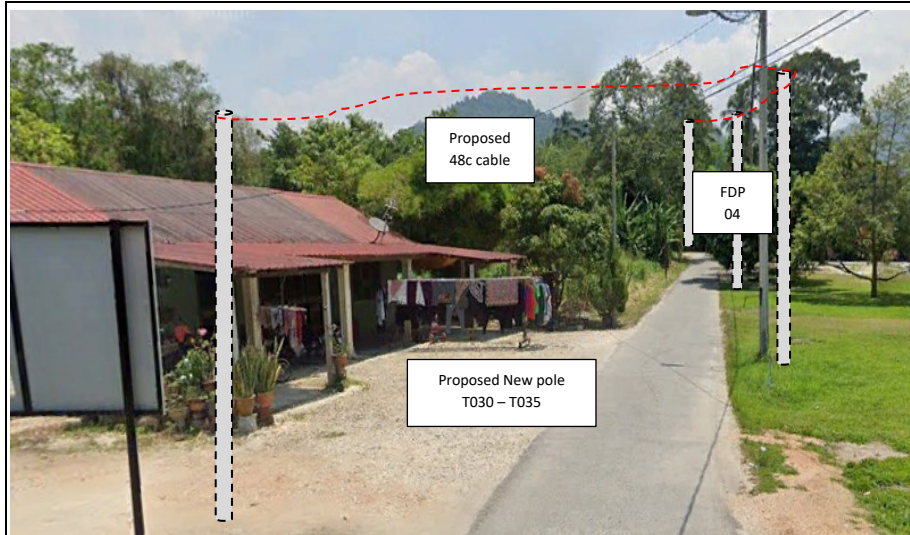
143	T142	30.76	4.462628637	101.17462	Majlis Perbandaran Kampar
144	T143	27.85	4.46269178	101.174378	Majlis Perbandaran Kampar
145	T144	162.88	4.461868366	101.1755875	Majlis Perbandaran Kampar
146	T145	17.96	4.461785349	101.1754492	Majlis Perbandaran Kampar
147	T146	24.71	4.461840121	101.1752341	Majlis Perbandaran Kampar
148	T147	24.08	4.461896539	101.1750253	Majlis Perbandaran Kampar
149	T148	36.32	4.46197821	101.1747094	Majlis Perbandaran Kampar
150	T149	31.97	4.462045346	101.1744302	Majlis Perbandaran Kampar
151	T150	35.30	4.462139357	101.1741274	Majlis Perbandaran Kampar
152	T151	102.50	4.461668724	101.1749187	Majlis Perbandaran Kampar
153	T152	30.04	4.461410324	101.174841	Majlis Perbandaran Kampar
154	T153	22.31	4.46135637	101.174648	Majlis Perbandaran Kampar
155	T154	27.27	4.461147325	101.1747756	Majlis Perbandaran Kampar
156	T155	53.71	4.461432421	101.1743864	Majlis Perbandaran Kampar
157	T156	31.24	4.461498918	101.1741137	Majlis Perbandaran Kampar
158	T157	35.95	4.461567817	101.1737983	Majlis Perbandaran Kampar
159	T158	127.86	4.460843569	101.1746897	Majlis Perbandaran Kampar
160	T159	20.70	4.46074639	101.1745311	Majlis Perbandaran Kampar
161	T160	30.88	4.460819467	101.1742635	Majlis Perbandaran Kampar
162	T161	34.63	4.460907285	101.1739651	Majlis Perbandaran Kampar
163	T162	32.70	4.460990986	101.1736835	Majlis Perbandaran Kampar
164	T163	34.30	4.460907	101.173965	Majlis Perbandaran Kampar
165	T164	66.90	4.460991	101.173683	Majlis Perbandaran Kampar

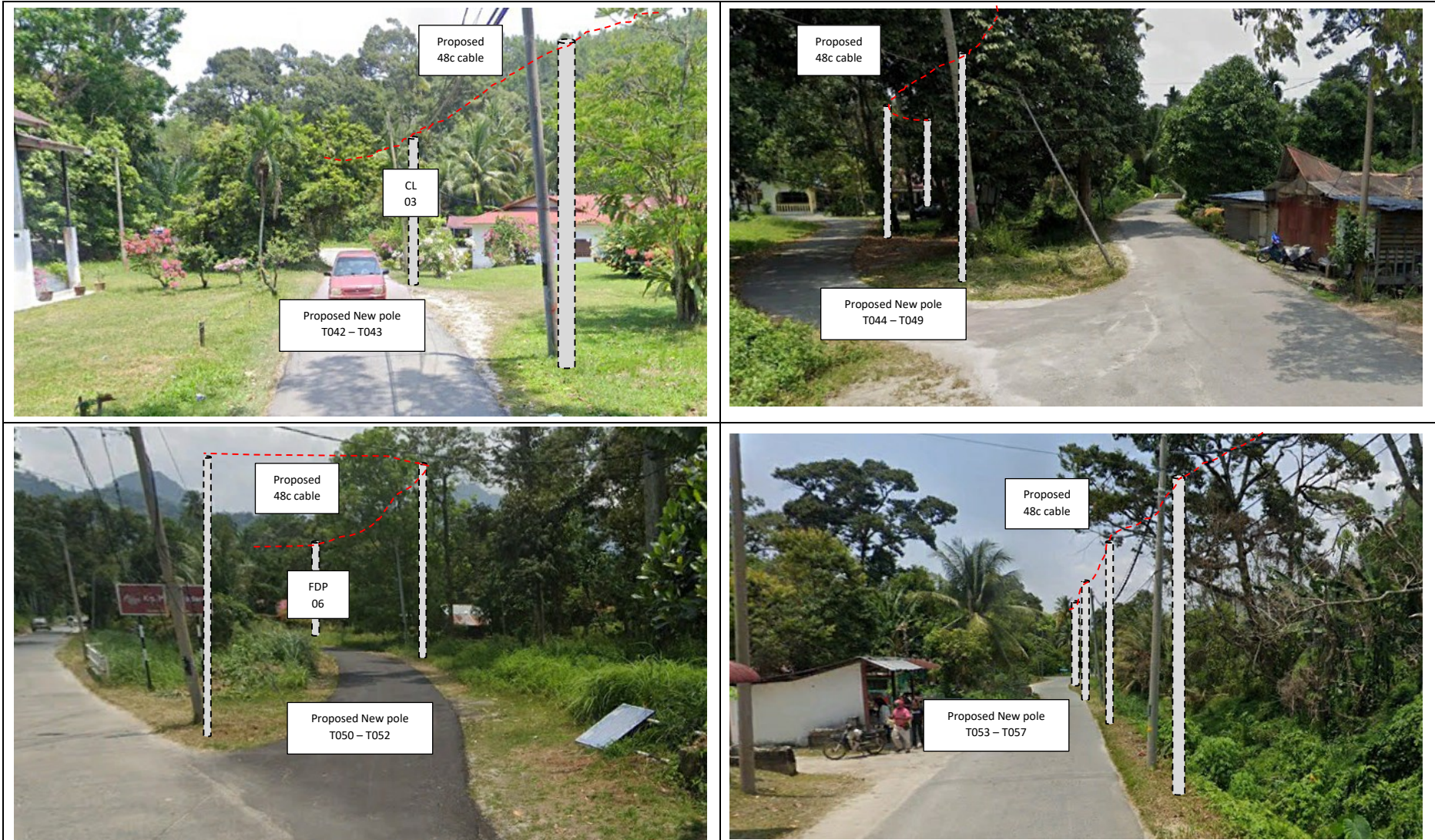
Site Photos – Proposed to install pole

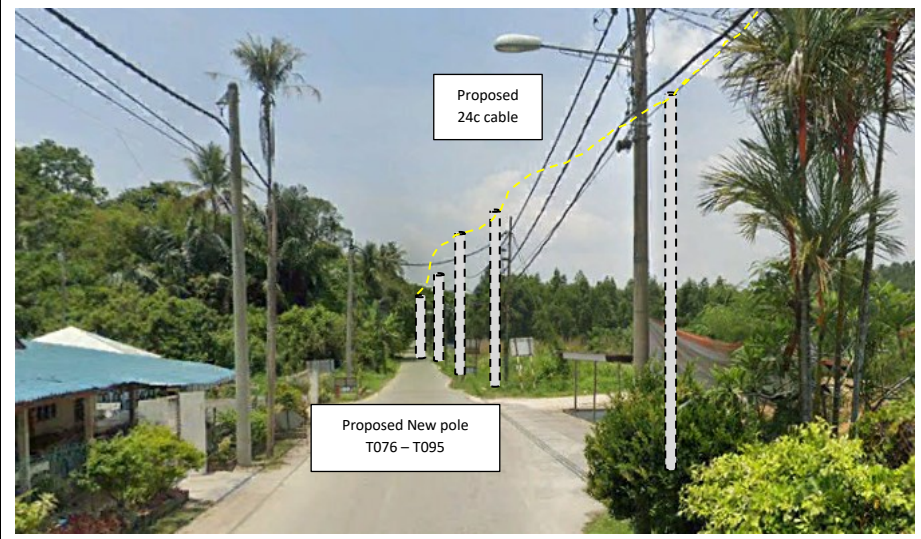
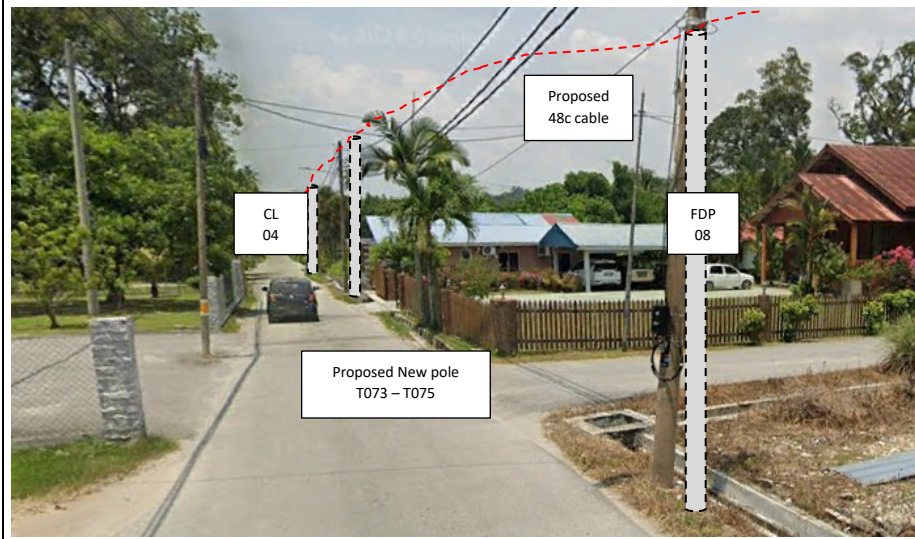
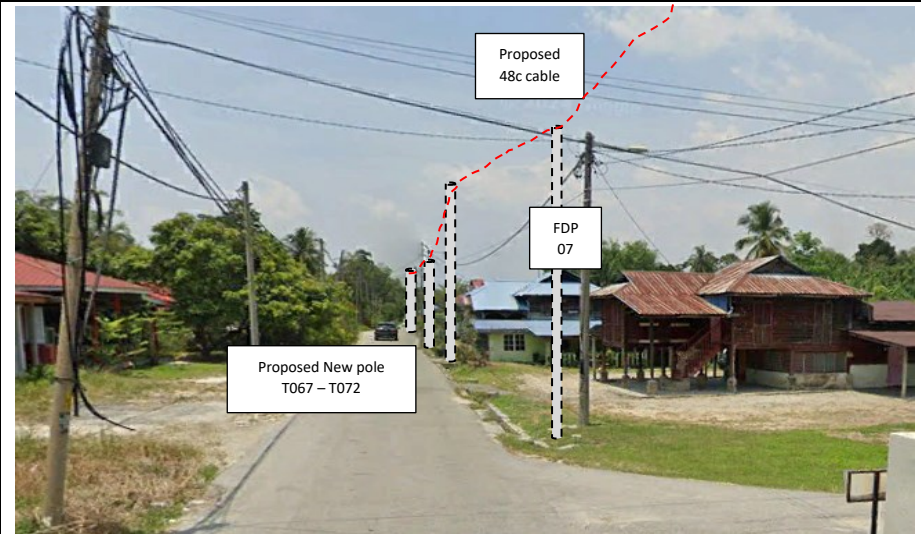
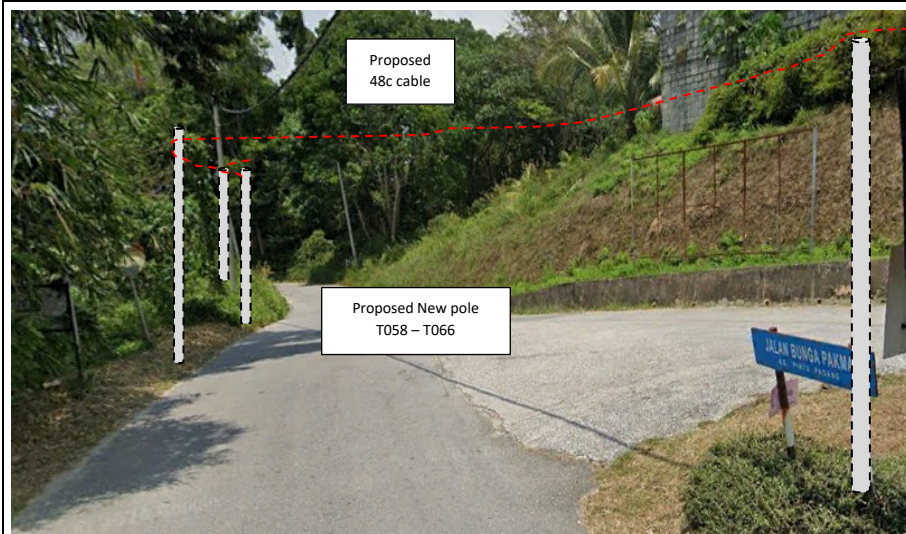


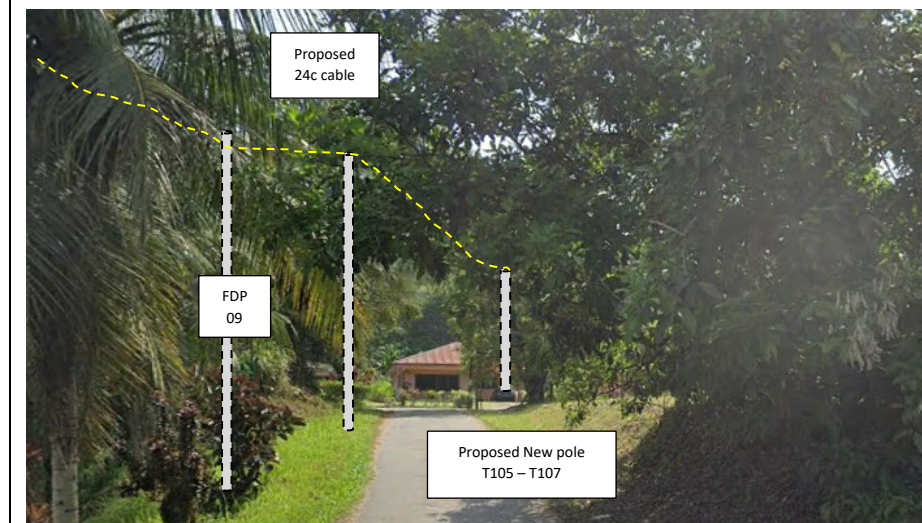
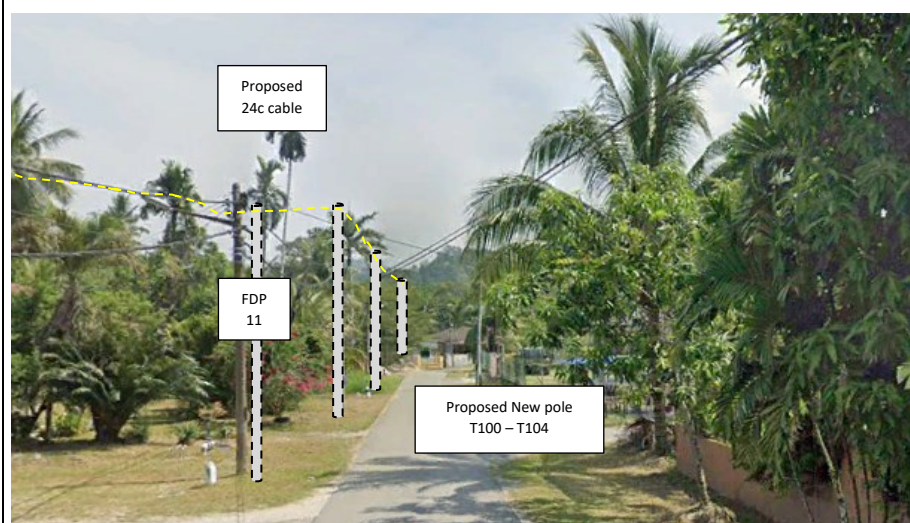
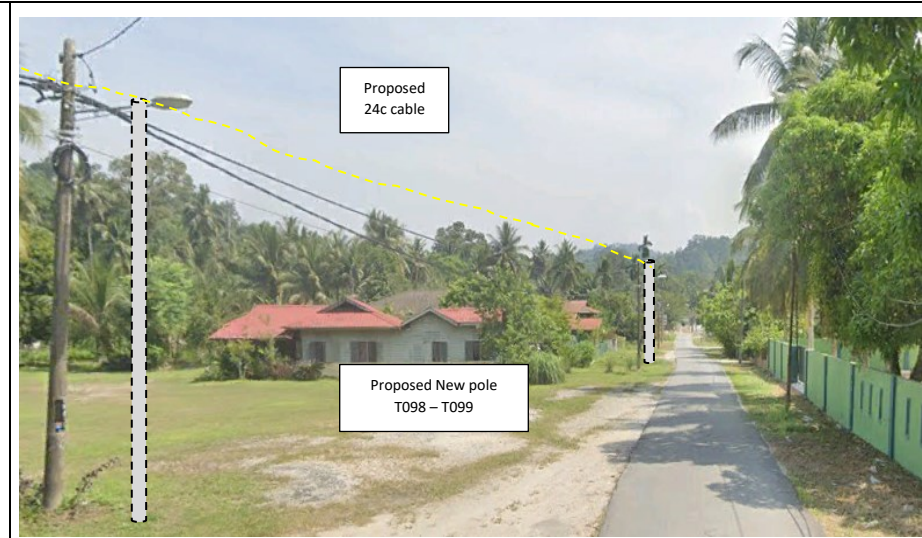
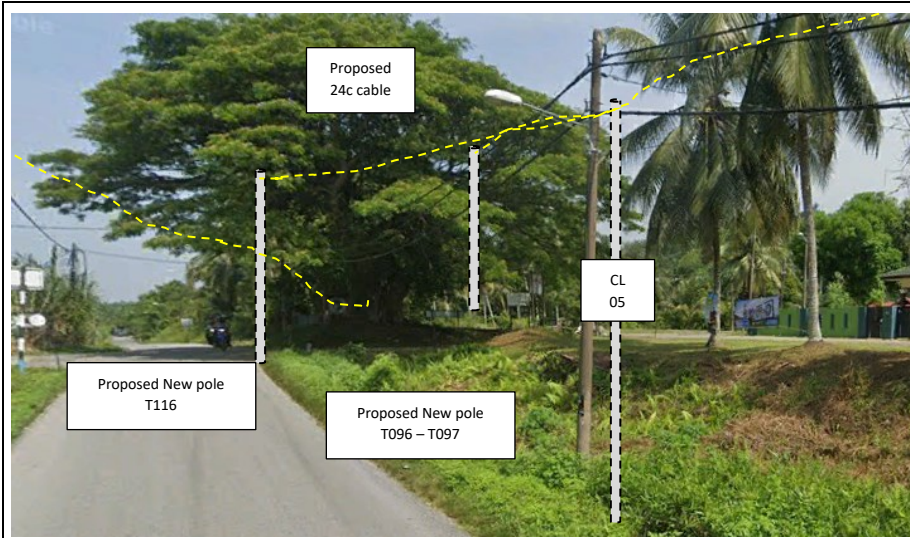


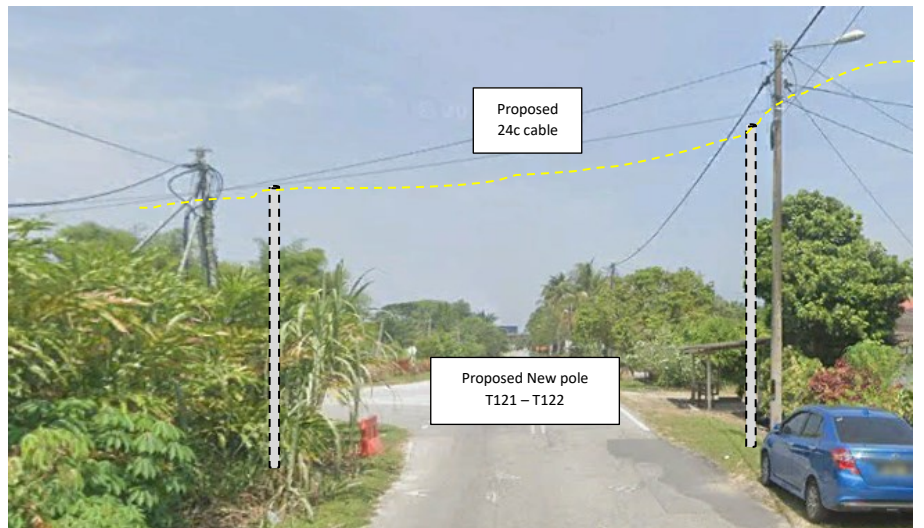
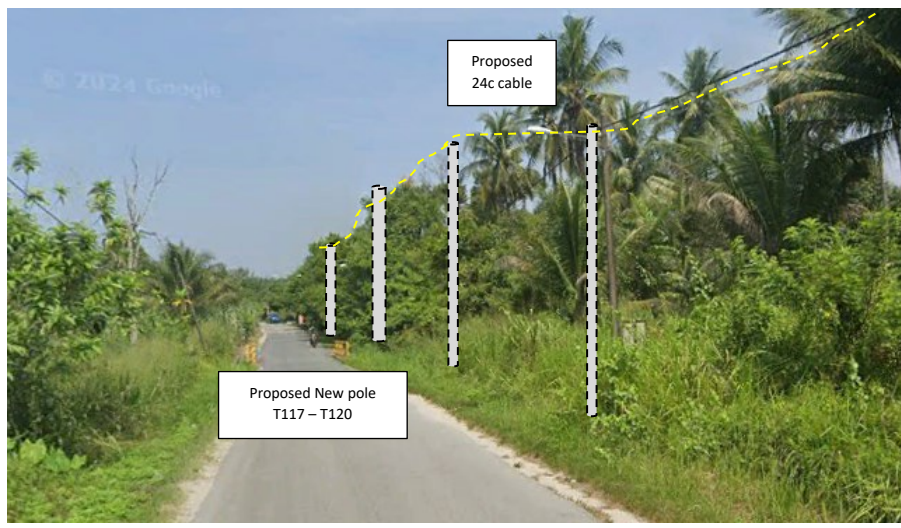
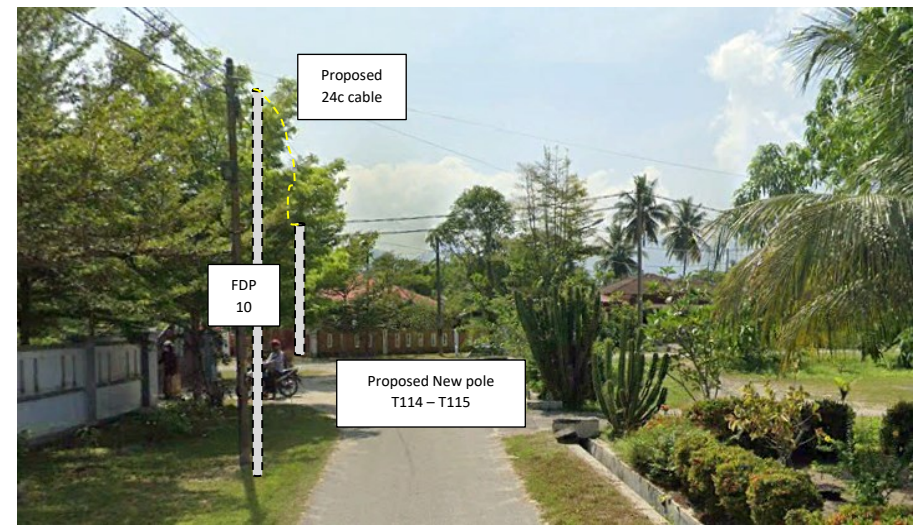
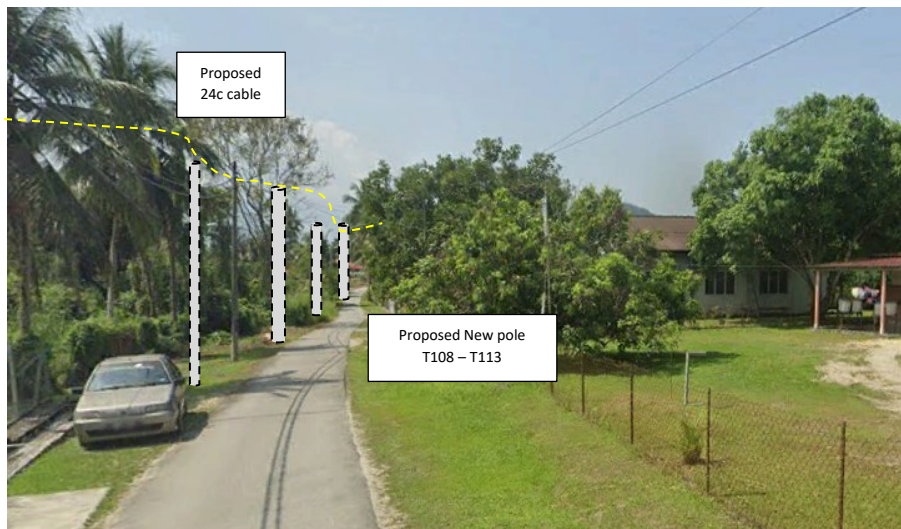


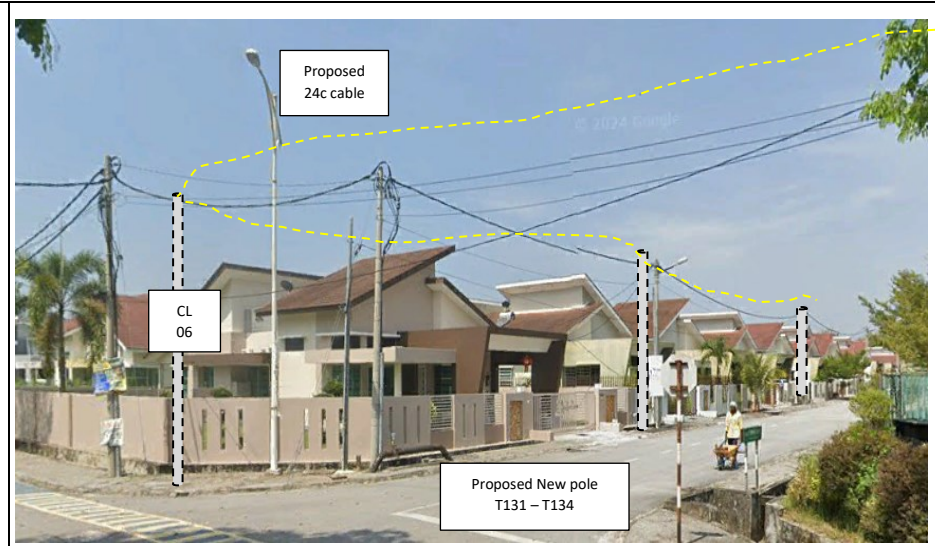
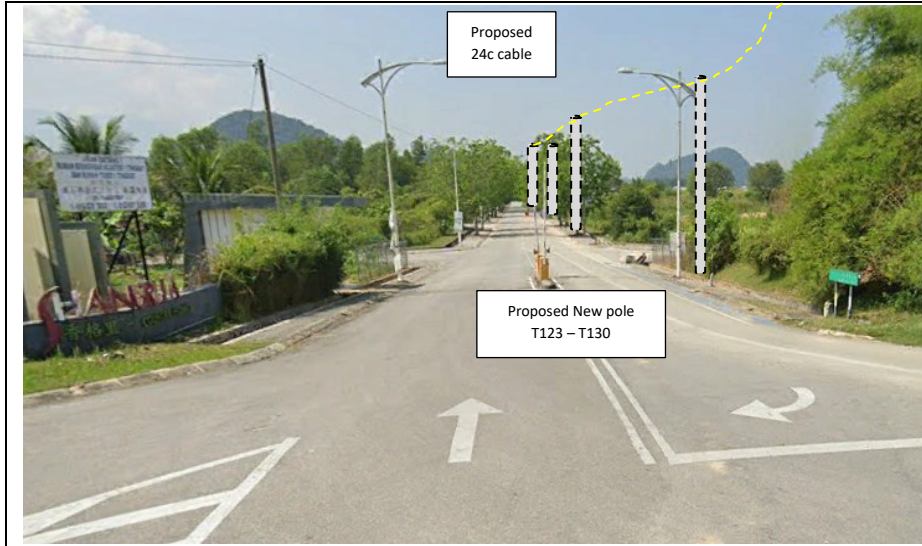




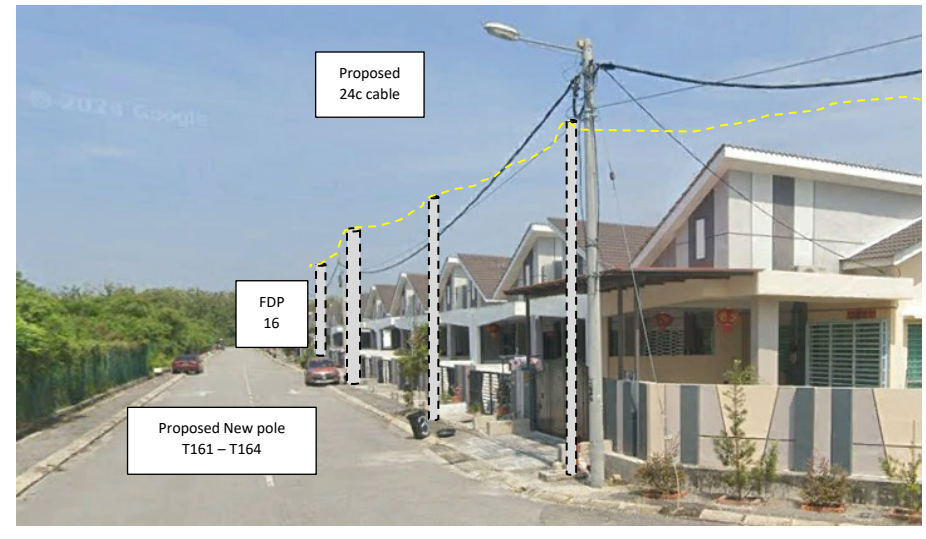
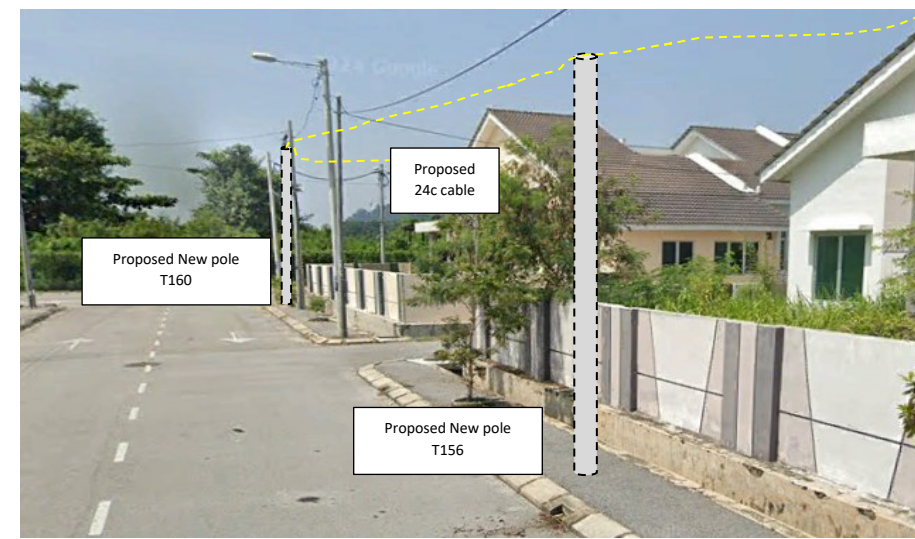
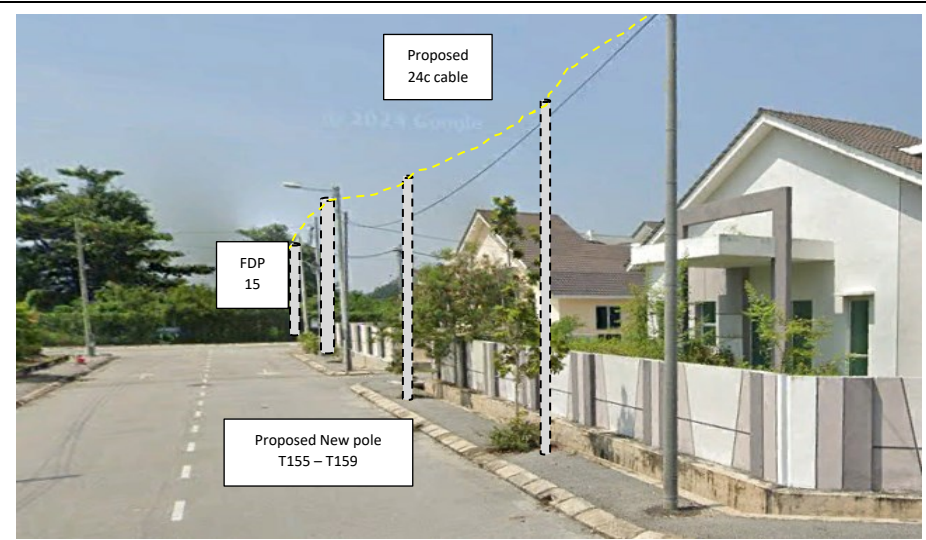
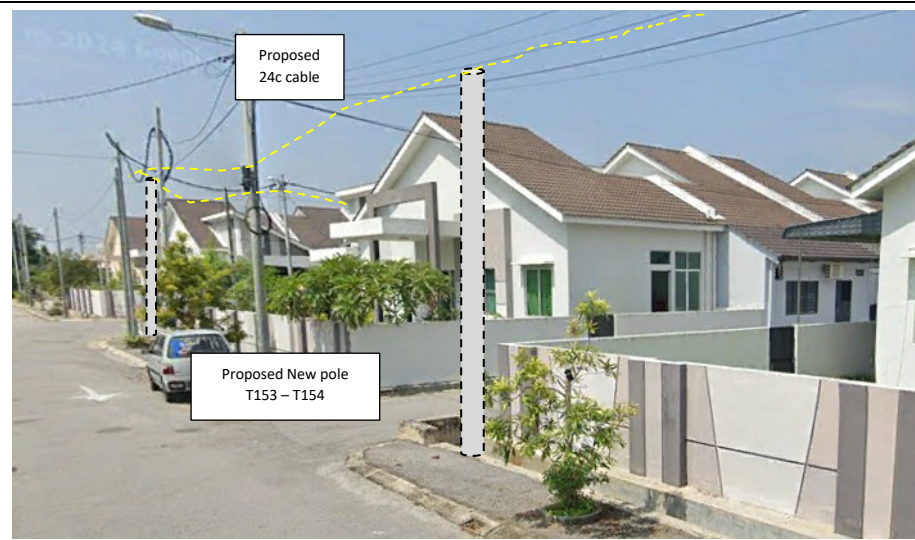












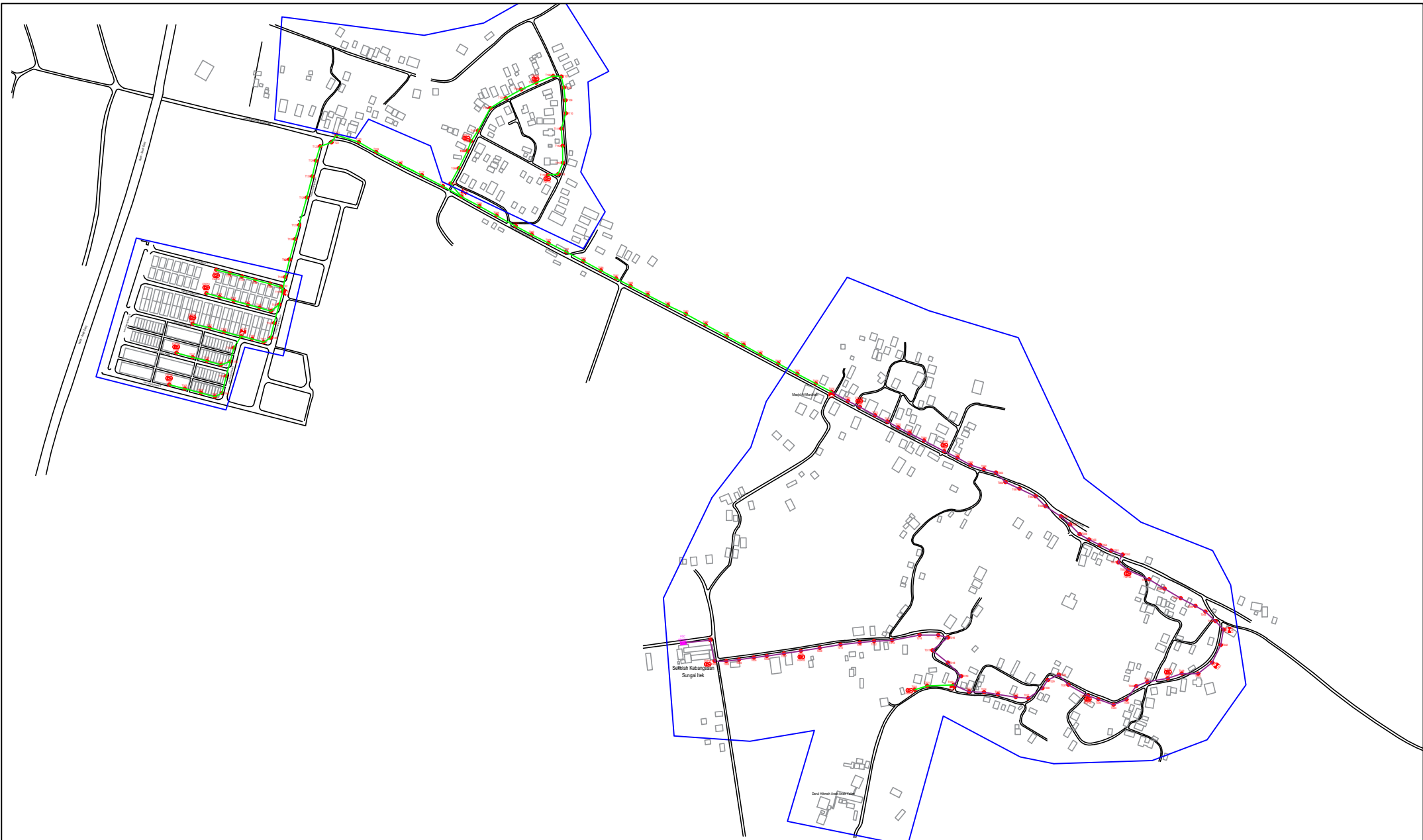


PROJEK PENYEDIAAN DAN PENYELENGGARAAN POINT OF PRESENCE (POP) FASA 2: HAB INFRASTRUKTUR GENTIAN OPTIK BERHAMPIRAN DENGAN SEKOLAH, KAWASAN PERINDUSTRIAN, PREMIS KERAJAAN DAN KOMUNITI SEKITARNYA OLEH KEMENTERIAN KOMUNIKASI MALAYSIA - ZON UTARA (KKMM.400-11/17/132(1))



3rd Parties Dependencies

No.	Local Council/ Authority	Remark
1	Majlis Perbandaran Kampar	
2		
3		
4		
5		
6		



LEGEND	NOS.	NOS.	NOS.	NOS.	NOS.	NOS.	NOS.	NOS.	NOS.	NOS.
12C FOC		Installed 1:4 / 1:8 / 1:32 splitter		Installed Pole (9m)		Suspension		BS30 New Manhole (PIT)		Micro-Trenching (Meter)
24C FOC	3884	Installed Patch Cord		Installed Pole (7.5M)	164	Tension		BS7 New Manhole(JRC7)		Temporary Infra (Meter)
48C FOC	2367	FDC	1	Installed Pole (6.7M)		Pole Ring		FDP Boundary		Loop / Coil (Meter)
96C FOC		Closure	7	Existing TNB Pole		FDP with (1:8) splitter	16	HDD (Meter)		# Active Outdoor Cabinet
144C FOC		Existing Closure		Installed Riser		Existing Manhole		Open Cut (Meter)		001 FDC NO.
										MH1 MH NO.
										TKS-1 Existing TNB Pole NO.
										P001 New Pole NO.
										CL01 Closure NO.
										DP1 FDP NO.

ACTUAL HOMEPASS :

KEY PLAN :

POP2 PROJECT IN PERAK

OWNER/DEVELOPER :



APEX COMMUNICATIONS SDN BHD
12th FLOOR, MENARA WIP BERKAS,
52250 JALAN P. RAMLEE
KUALA LUMPUR

MAIN CONTRACTOR :



WCWL COMMUNICATIONS SDN BHD
127, JALAN PAU 3/2, TAMAN PUNCAK JALIL,
BANDAR PUNCAK PERUDA,
43300 SERI KEMBANGAN, SELANGOR
TEL: +603 8958 0983
E-MAIL: info@wcwlcommunications.com.my
WEBSITE: https://wcwl.com.my

PROJECT TITLE :

CONTRACTOR FOR SURVEY, TECHNICAL PROPOSAL AND WAYLEAVE, & PERMIT APPROVAL - POP2 PROJECT

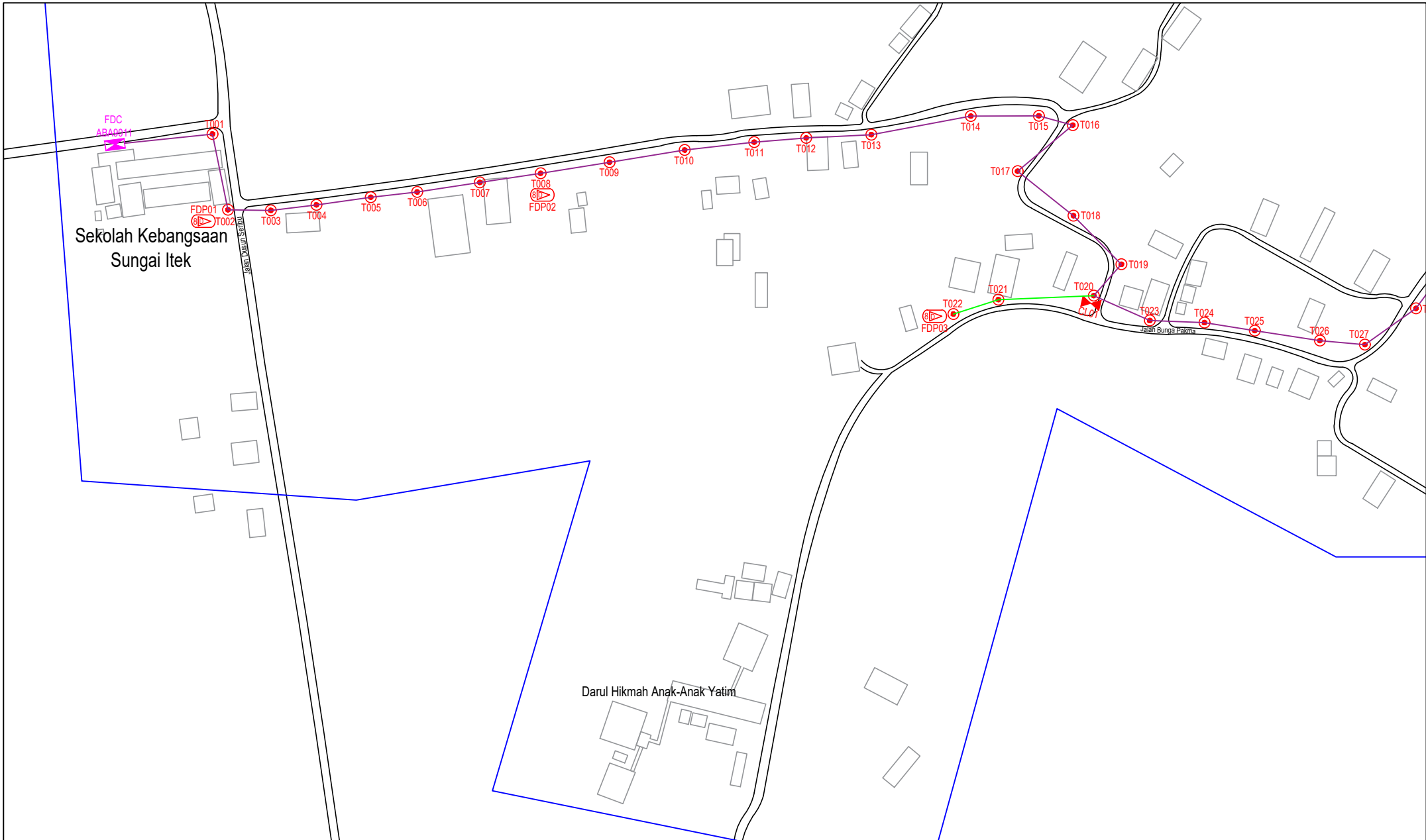
DRAWING TITLE:

AS-BUILT SITE PLAN DRAWING
ABA9011
SEKOLAH KEBANGSAAN SUNGAI ITEK

PROJECT PHASE:

POP 2

Design By : ENGINEER	Date : NOV 2024
Drawn By : CAD ENGINEER	Scale : NOT TO SCALE
Checked By : ENGINEER	Job Number : 1
DRAWING NUMBER : ABA9011-ABD-01	Sheet : 1/8
THIS PRINT AND ITS COPYRIGHT ARE THE PROPERTY OF APEX COMMUNICATIONS SDN BHD	
Size : A3	



LEGEND	NOS.	NOS.	NOS.	NOS.	NOS.	NOS.	NOS.	NOS.	NOS.	NOS.	
12C FOC		Installed Pole (9m)		Suspension		MS0	New Manhole (PIT)	Micro-Trenching (Meter)		MH1	MH NO.
24C FOC	3884	Installed Pole (7.5M)	164	Tension		MS7	New Manhole(JRC7)	Temporary Infra (Meter)		TKS-1	Existing TNB Pole NO.
48C FOC	2367	Installed Pole (6.7M)		Pole Ring			FDP Boundary	Loop / Coil (Meter)		P001	New Pole NO.
96C FOC		Existing TNB Pole		FDP with (1:8) splitter	16		HDD (Meter)	#	Active Outdoor Cabinet	CL01	Closure NO.
144C FOC		Installed Risers		Existing Manhole			Open Cut (Meter)	001	FDC NO.	DP1	FDP NO.
		Existing Closure									

ACTUAL HOMEPASS :

KEY PLAN :

POP2 PROJECT IN PERAK

OWNER/DEVELOPOR :

APEX COMMUNICATIONS SDN BHD
12th FLOOR, MENARA WFP SENANG, 52200 JALAN P. RAMLEE, KUALA LUMPUR

WCWL COMMUNICATIONS SDN BHD
127, JALAN PULU 3/2, TAMAN PUNCAK JALIL, BANGKOH PULAU PERANG, 43300 SEREMBANGAN, SELANGOR
TEL: +603 8958 0983
E-MAIL: info@wcwlcommunications.com.my
WEBSITE: https://wcwl.com.my

MAIN CONTRACTOR :

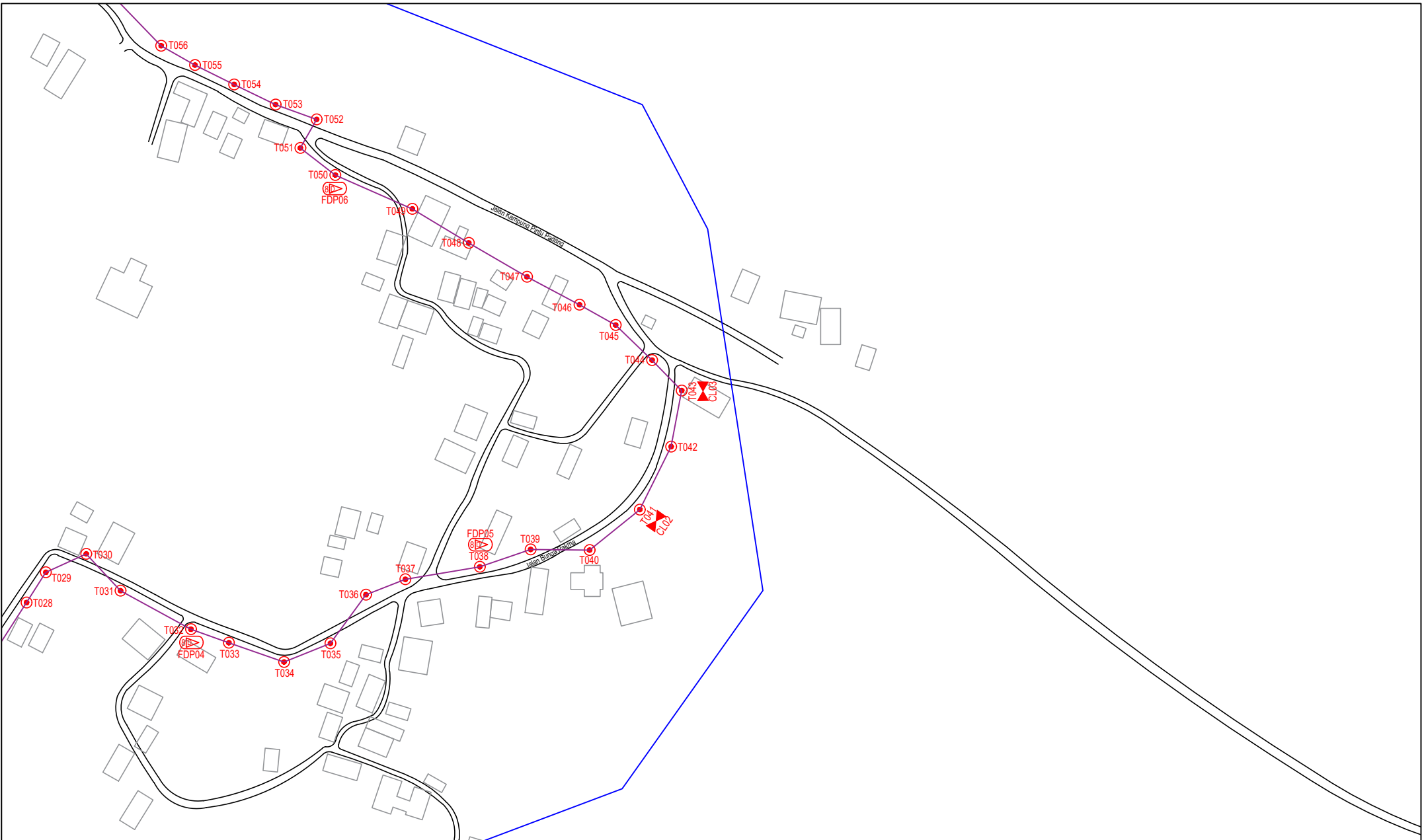
CONTRACTOR FOR SURVEY, TECHNICAL PROPOSAL AND WAYLEAVE, & PERMIT APPROVAL - POP2 PROJECT

PROJECT TITLE :

DRAWING TITLE:
AS-BUILT SITE PLAN DRAWING
ABA9011
SEKOLAH KEBANGSAAN SUNGAI ITEK

PROJECT PHASE:
POP 2

Design By : ENGINEER	Date : NOV 2024
Drawn By : CAD ENGINEER	Scale : NOT TO SCALE
Checked By : ENGINEER	Job Number : 1
DRAWING NUMBER : ABA9011-ABD-01A	Sheet : 2/8
THIS PRINT AND ITS COPYRIGHT ARE THE PROPERTY OF APEX COMMUNICATIONS SDN BHD	
Size : A3	



LEGEND	NOS.	NOS.	NOS.	NOS.	NOS.	NOS.	NOS.	NOS.	NOS.	NOS.		
12C FOC		Installed 1:4 / 1:8 / 1:32 splitter		Installed Pole (9m)		Suspension		UB30	New Manhole (PIT)	Micro-Trenching (Meter)	MH1	MH NO.
24C FOC	3884	Installed Patch Cord		Installed Pole (7.5M)	164	Tension		CB7	New Manhole(JRC7)	Temporary Infra (Meter)	TKS-1	Existing TNB Pole NO.
48C FOC	2367	FDC	1	Installed Pole (6.7M)		Pole Ring			FDP Boundary	Loop / Coil (Meter)	P001	New Pole NO.
96C FOC		Closure	7	Existing TNB Pole		FDP with (1:8) splitter	16		HDD (Meter)	#	CL01	Closure NO.
144C FOC		Existing Closure		Installed Riser		Existing Manhole			Open Cut (Meter)	001	DP1	FDP NO.

ACTUAL HOMEPASS :

KEY PLAN :

POP2 PROJECT IN PERAK

OWNER/DEVELOPER :

APEX COMMUNICATIONS SDN BHD
12th FLOOR, MENARA WIP BERKA,
52250 JALAN P. RAMLEE
KUALA LUMPUR

MAIN CONTRACTOR :

WCWL COMMUNICATIONS SDN BHD
127, JALAN PULU 3/2, TAMAN PUNCAK AJIL,
BANDAR PUNCAK PERUDA,
43300 SERI KEMBANGAN, SELANGOR
TEL: +603 8958 5983
E-MAIL: info@wcwlcommunications.com.my
WEBSITE: https://wcwl.com.my

PROJECT TITLE :

CONTRACTOR FOR SURVEY, TECHNICAL PROPOSAL AND WAYLEAVE, & PERMIT APPROVAL - POP2 PROJECT

DRAWING TITLE:
AS-BUILT SITE PLAN DRAWING
ABA9011
SEKOLAH KEBANGSAAN SUNGAI ITEK

PROJECT PHASE:
POP 2

Design By : ENGINEER	Date : NOV 2024
Drawn By : CAD ENGINEER	Scale : NOT TO SCALE
Checked By : ENGINEER	Job Number : 1
DRAWING NUMBER : ABA9011-ABD-01C	Sheet : 3/8
THIS PRINT AND ITS COPYRIGHT ARE THE PROPERTY OF APEX COMMUNICATIONS SDN BHD	
Size : A3	

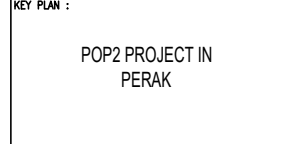


LEGEND	NOS.	NOS.	NOS.	NOS.	NOS.	NOS.	NOS.	NOS.	NOS.	NOS.	NOS.	
12C FOC		Installed 1:4 / 1:8 / 1:32 splitter		Installed Pole (9m)		Suspension		MB30 New Manhole (PIT)		Micro-Trenching (Meter)		MH1 MH NO.
24C FOC	3884	Installed Patch Cord		Installed Pole (7.5M)	164	Tension		MB7 New Manhole(JRC7)		Temporary Infra (Meter)		TKS-1 Existing TNB Pole NO.
48C FOC	2367	FDC	1	Installed Pole (6.7M)		Pole Ring		FDP Boundary		Loop / Coil (Meter)		P001 New Pole NO.
96C FOC		Closure	7	Existing TNB Pole		FDP with (1:8) splitter	16	HDD (Meter)		Active Outdoor Cabinet		CL01 Closure NO.
144C FOC		Existing Closure		Installed Riser		Existing Manhole		Open Cut (Meter)		FDC NO.		DP1 FDP NO.

ACTUAL HOMEPASS :

KEY PLAN :

POP2 PROJECT IN PERAK



OWNER/DEVELOPER :

APEX COMMUNICATIONS SDN BHD
12th FLOOR, MENARA WIP SENANG, 52250 JALAN P. RAMLEE, KUALA LUMPUR



MAIN CONTRACTOR :

WCWL COMMUNICATIONS SDN BHD
127, JALAN PAU 3/2, TAMAN PUNCAK JALIL, BUKIT PATAH, PERAK.
43300 SENI KEMAMAN, SELANGOR
TEL: +603 8958 0983
E-MAIL: info@wcwlcommunications.com.my
WEBSITE: https://wcwl.com.my

PROJECT TITLE :

CONTRACTOR FOR SURVEY, TECHNICAL PROPOSAL AND WAYLEAVE, & PERMIT APPROVAL - POP2 PROJECT

DRAWING TITLE:
AS-BUILT SITE PLAN DRAWING ABA9011
SEKOLAH KEBANGSAAN SUNGAI ITEK

PROJECT PHASE:
POP 2

Design By : ENGINEER	Date : NOV 2024
Drawn By : CAD ENGINEER	Scale : NOT TO SCALE
Checked By : ENGINEER	Job Number : 1
DRAWING NUMBER : ABA9011-ABD-01C	Sheet : 4/8
THIS PRINT AND ITS COPYRIGHT ARE THE PROPERTY OF APEX COMMUNICATIONS SDN BHD	
Size : A3	



LEGEND	NOS.	NOS.	NOS.	NOS.	NOS.	NOS.	NOS.	NOS.	NOS.	NOS.	NOS.
12C FOC		Installed Pole (9m)		S	Suspension	MS0	New Manhole (PIT)	Micro-Trenching (Meter)	MH1	MH NO.	
24C FOC	3884	Installed Pole (7.5M)	164	T	Tension	MS7	New Manhole(JRC7)	Temporary Infra (Meter)	TKS-1	Existing TNB Pole NO.	
48C FOC	2367	Installed Pole (6.7M)		R	Pole Ring		FDP Boundary	Loop / Coil (Meter)	P001	New Pole NO.	
96C FOC		Existing TNB Pole		FDP	FDP with (1:8) splitter	16	Existing Manhole	#	CL01	Closure NO.	
144C FOC		Installed Riser			Existing Manhole		Existing Closure	Open Cut (Meter)	DP1	FDP NO.	

ACTUAL HOMEPASS :

KEY PLAN :

POP2 PROJECT IN PERAK

OWNER/DEVELOPOR :

APEX COMMUNICATIONS SDN BHD
12th FLOOR, MENARA WFP SENANG, 52250 JALAN P. RAMLEE, KUALA LUMPUR

WCWL COMMUNICATIONS SDN BHD
127, JALAN PULU 3/2, TAMAN PUNCAK JALIL, BUKIT PUNCAK, PERAK, 43300 SENANG, SELANGOR
TEL: +603 8958 0983
E-MAIL: info@wcwlcommunications.com.my
WEBSITE: https://wcwl.com.my

MAIN CONTRACTOR :

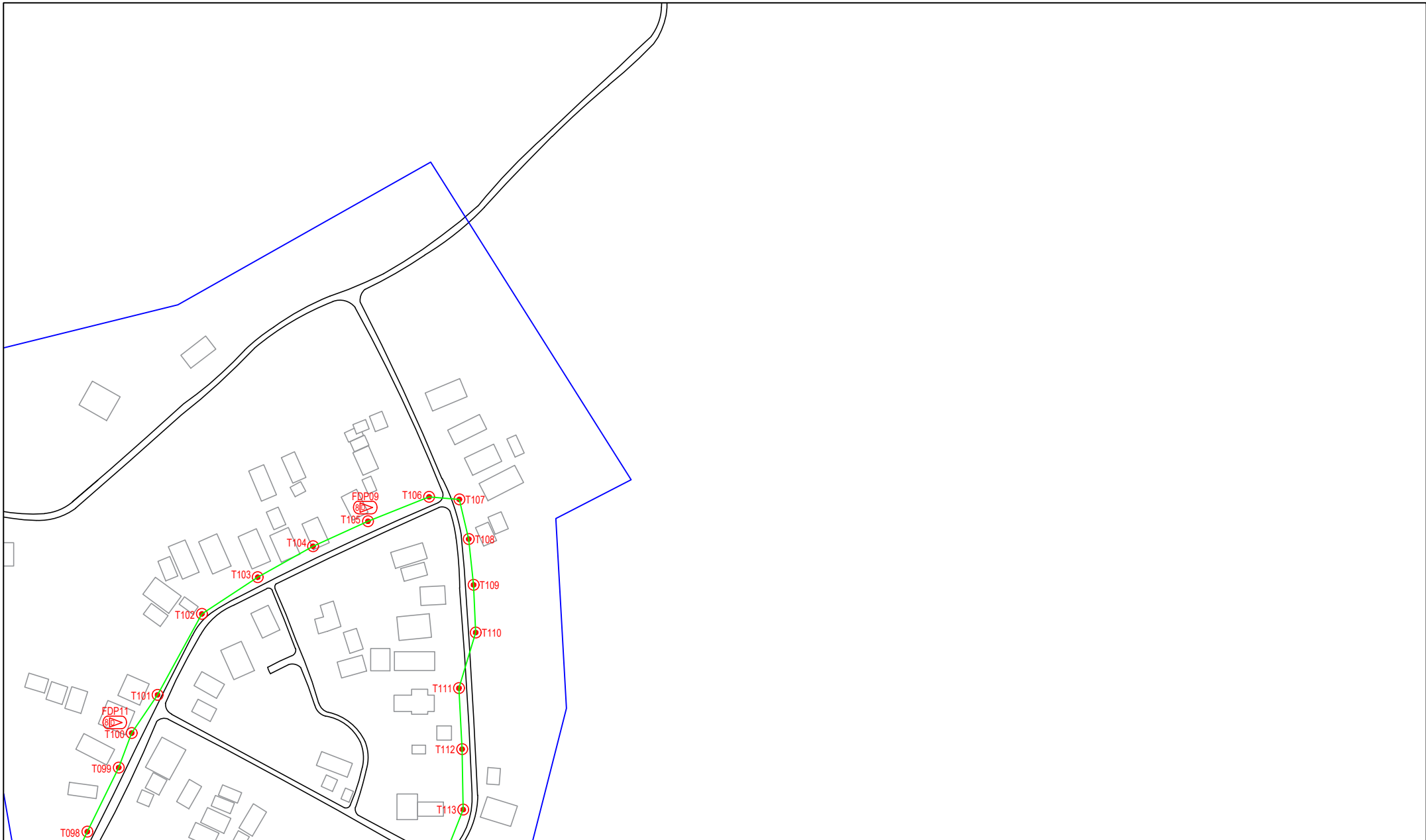
PROJECT TITLE :

CONTRACTOR FOR SURVEY, TECHNICAL PROPOSAL AND WAYLEAVE, & PERMIT APPROVAL - POP2 PROJECT

DRAWING TITLE:
AS-BUILT SITE PLAN DRAWING ABA9011 SEKOLAH KEBANGSAAN SUNGAI ITEK

PROJECT PHASE:
POP 2

Design By : ENGINEER	Date : NOV 2024
Drawn By : CAD ENGINEER	Scale : NOT TO SCALE
Checked By : ENGINEER	Job Number : 1
DRAWING NUMBER : ABA9011-ABD-01D	Sheet : 5/8
THIS PRINT AND ITS COPYRIGHT ARE THE PROPERTY OF APEX COMMUNICATIONS SDN BHD	
Size : A3	



LEGEND	NOS.	NOS.	NOS.	NOS.	NOS.	NOS.	NOS.	NOS.	NOS.	NOS.	NOS.	
12C FOC		Installed 1:4 / 1:8 / 1:32 splitter		Installed Pole (9m)		Suspension		BS30 New Manhole (PT)		Micro-Trenching (Meter)		MHI MH NO.
24C FOC	3884	Installed Patch Cord		Installed Pole (7.5M)	164	Tension		BS7 New Manhole(JRC7)		Temporary Infra (Meter)		TKS-1 Existing TNB Pole NO.
48C FOC	2367	FDC	1	Installed Pole (6.7M)		Pole Ring		FDP Boundary		Loop / Coil (Meter)		P001 New Pole NO.
96C FOC		Closure	7	Existing TNB Pole		FDP with (1:8) splitter	16	HDD (Meter)		# Active Outdoor Cabinet		CL01 Closure NO.
144C FOC		Existing Closure		Installed Riser		Existing Manhole		Open Cut (Meter)		001 FDC NO.		DP1 FDP NO.

ACTUAL HOMEPASS :

KEY PLAN :

POP2 PROJECT IN PERAK

OWNER/DEVELOPOR :



MAIN CONTRACTOR :

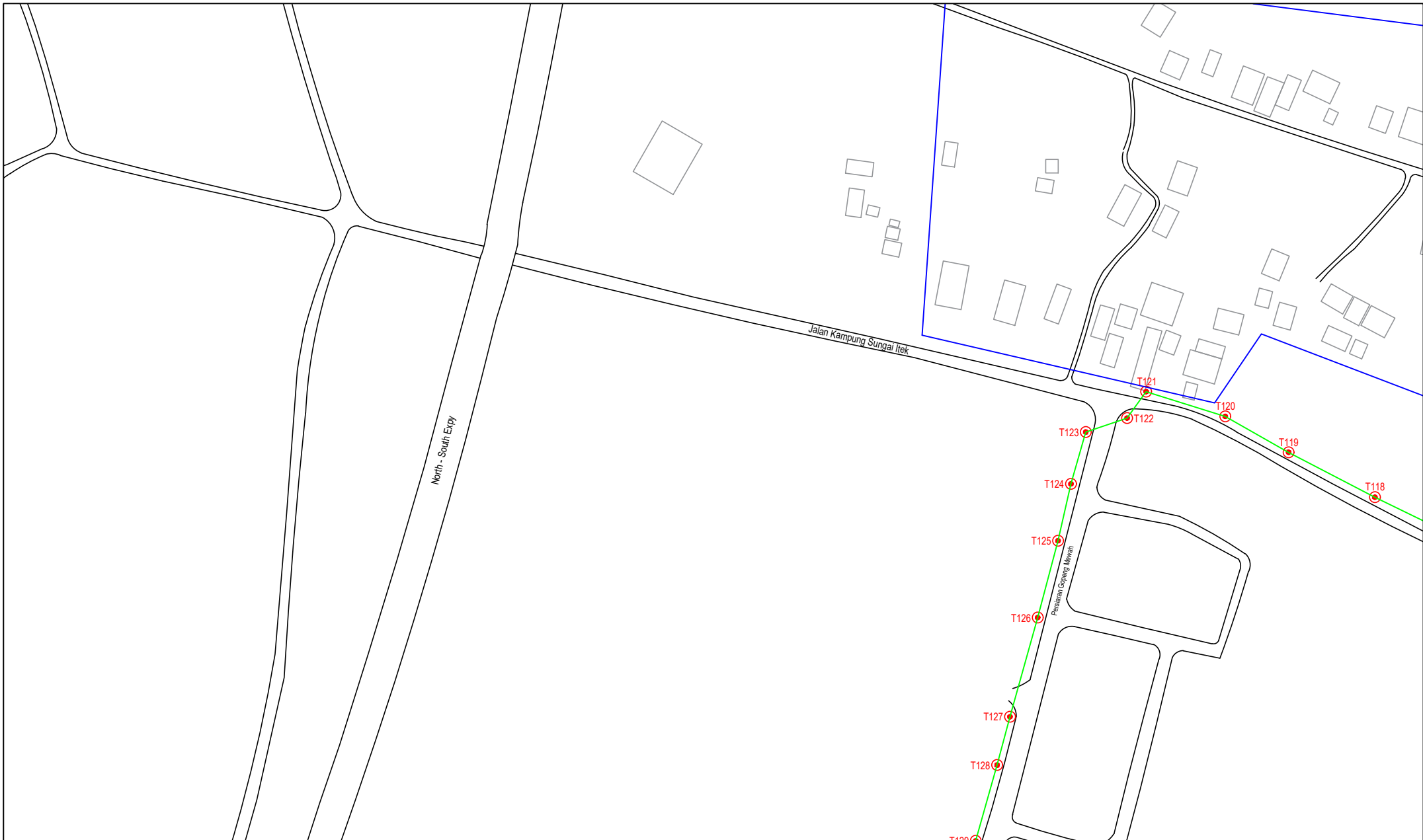
CONTRACTOR FOR SURVEY, TECHNICAL PROPOSAL AND WAYLEAVE, & PERMIT APPROVAL - POP2 PROJECT

PROJECT TITLE :

DRAWING TITLE:
AS-BUILT SITE PLAN DRAWING
ABA9011
SEKOLAH KEBANGSAAN SUNGAI ITEK

PROJECT PHASE:
POP 2

Design By : ENGINEER	Date : NOV 2024
Drawn By : CAD ENGINEER	Scale : NOT TO SCALE
Checked By : ENGINEER	Job Number : 1
DRAWING NUMBER : ABA9011-ABD-01E	Sheet : 6/8
THIS PRINT AND ITS COPYRIGHT ARE THE PROPERTY OF APEX COMMUNICATIONS SDN BHD	
Size : A3	



LEGEND	NOS.	NOS.	NOS.	NOS.	NOS.	NOS.	NOS.	NOS.	NOS.	NOS.	NOS.	
12C FOC		Installed 1:4 / 1:8 / 1:32 splitter		Installed Pole (9m)		Suspension		MS30 New Manhole (PIT)		Micro-Trenching (Meter)		MH1 MH NO.
24C FOC	3884	Installed Patch Cord		Installed Pole (7.5M)	164	Tension		MS7 New Manhole(JRC7)		Temporary Infra (Meter)		TKS-1 Existing TNB Pole NO.
48C FOC	2367	FDC	1	Installed Pole (6.7M)		Pole Ring		FDP Boundary		Loop / Coil (Meter)		P001 New Pole NO.
96C FOC		Closure	7	Existing TNB Pole		FDP with (1:8) splitter	16	HDD (Meter)		Active Outdoor Cabinet		CL01 Closure NO.
144C FOC		Existing Closure		Installed Riser		Existing Manhole		Open Cut (Meter)		FDC NO.		DP1 FDP NO.

ACTUAL HOMEPASS :

KEY PLAN :

POP2 PROJECT IN PERAK

OWNER/DEVELOPOR :

APEX COMMUNICATIONS SDN BHD
12th FLOOR, MENARA WIP BERKA,
50250 JALAN P. RAMLEE
KUALA LUMPUR

WCWL COMMUNICATIONS SDN BHD
127, JALAN PAU 3/2, TAMAN PUNCAK JALIL,
BANDAR PUNCAK PERUDA,
43300 SEREMBANGAN, SELANGOR
TEL: +603 8958 0983
E-MAIL: info@wcwlcommunications.com.my
WEBSITE: https://wcwl.com.my

MAIN CONTRACTOR :

PROJECT TITLE :

CONTRACTOR FOR SURVEY, TECHNICAL PROPOSAL AND WAYLEAVE, & PERMIT APPROVAL - POP2 PROJECT

DRAWING TITLE:
AS-BUILT SITE PLAN DRAWING ABA9011
SEKOLAH KEBANGSAAN SUNGAI ITEK

PROJECT PHASE:
POP 2

Design By : ENGINEER	Date : NOV 2024
Drawn By : CAD ENGINEER	Scale : NOT TO SCALE
Checked By : ENGINEER	Job Number : 1
DRAWING NUMBER : ABA9011-ABD-01F	Sheet : 7/8
THIS PRINT AND ITS COPYRIGHT ARE THE PROPERTY OF APEX COMMUNICATIONS SDN BHD	
Size : A3	



LEGEND	NOS.	NOS.	NOS.	NOS.	NOS.	NOS.	NOS.	NOS.	NOS.	NOS.		
12C FOC		Installed 1:4 / 1:8 / 1:32 splitter		Installed Pole (9m)		Suspension		BE30 New Manhole (PIT)		Micro-Trenching (Meter)		MH1 MH NO.
24C FOC	3884	Installed Patch Cord		Installed Pole (7.5M)	164	Tension		CE7 New Manhole(JRC7)		Temporary Infra (Meter)		TKS-1 Existing TNB Pole NO.
48C FOC	2367	FDC	1	Installed Pole (6.7M)		Pole Ring		FDP Boundary		Loop / Coil (Meter)		PO01 New Pole NO.
96C FOC		Closure	7	Existing TNB Pole		FDP with (1:8) splitter	16	HDD (Meter)		# Active Outdoor Cabinet		CL01 Closure NO.
144C FOC		Existing Closure		Installed Riser		Existing Manhole		Open Cut (Meter)		001 FDC NO.		DP1 FDP NO.

ACTUAL HOMEPASS :

KEY PLAN :

POP2 PROJECT IN PERAK

OWNER/DEVELOPOR :



MAIN CONTRACTOR :

CONTRACTOR FOR SURVEY, TECHNICAL PROPOSAL AND WAYLEAVE, & PERMIT APPROVAL - POP2 PROJECT

PROJECT TITLE :

DRAWING TITLE:
AS-BUILT SITE PLAN DRAWING
ABA9011
SEKOLAH KEBANGSAAN SUNGAI ITEK

PROJECT PHASE:
POP 2

Design By : ENGINEER	Date : NOV 2024
Drawn By : CAD ENGINEER	Scale : NOT TO SCALE
Checked By : ENGINEER	Job Number : 1
DRAWING NUMBER : ABA9011-ABD-01G	Sheet : 8/8
THIS PRINT AND ITS COPYRIGHT ARE THE PROPERTY OF APEX COMMUNICATIONS SDN BHD	
Size : A3	