

TECHNICAL PROPOSAL POP2 ABD6106 SEKOLAH JENIS KEBANGSAAN (TAMIL) PONDOK TANJUNG

Company Name : T&H PANJI EMPIRE SDN BHD
Company Address : 39A Jalan Jelapang 5, Pusat Komersial Jelapang, 30020 Ipoh, Perak Darul Ridzuan.
Prepared By : Muhamad Hasif Bin Mohamed Hanif
Date : 27/2/2025



Starting Point

Site / Boundary Name : PONDOK TANJUNG
Address : SJKT PONDOK TANJUNG
District : TAIPING
Postcode : 34010
State : Perak
GPS Coordinate : 5.005961, 100.724307
LRD : A

End Point

Site / Boundary Name : PONDOK TANJUNG
Address : KAMPUNG BATU TUJOH
District : TAIPING
Postcode : 34010
State : Perak
GPS Coordinate : 5.011388, 100.729908
LRD : B



PROJEK PENYEDIAAN DAN PENYELENGGARAAN POINT OF PRESENT (POP) FASA 2: HAB INFRASTRUKTUR GENTIAN OPTIK BERHAMPIRAN DENGAN SEKOLAH, KAWASAN PERINDUSTRIAN, PREMIS KERAJAAN DAN KOMUNITI SEKITARNYA OLEH KEMENTERIAN KOMUNIKASI MALAYSIA - ZON UTARA (KKMM.400-11/17/132(1))



1.0 WORK SUMMARY

NO	PROPOSED DISTANCE AND METHOD	UNIT	QUANTITY
1	Horizontal Directional Drilling (HDD)	m	0
2	Carriage Way Open Trench (CW)	m	0
3	Grass Verge Open Trenching (GV)	m	0
4	Micro Trenching (MT)	m	0
Total			0

NO	OTHER INFORMATION	UNIT	QUANTITY
1	Installation of Short Span ADSS Fiber Cables	m	1800
2	Install New Pole	ea	37
3	Install New JRC7 Manhole	ea	0
4	Install GI Riser 100mm	ea	0
5	Install Fiber Distribution Point	ea	6
6	Closure (Splicing, Termination and Testing)	ea	0



PROJEK PENYEDIAAN DAN PENYELENGGARAAN POINT OF PRESENT (POP) FASA 2: HAB INFRASTUKTUR GENTIAN OPTIK BERHAMPIRAN DENGAN SEKOLAH, KAWASAN PERINDUSTRIAN, PREMIS KERAJAAN DAN KOMUNITI SEKITARNYA OLEH KEMENTERIAN KOMUNIKASI MALAYSIA - ZON UTARA (KKMM.400-11/17/132(1))



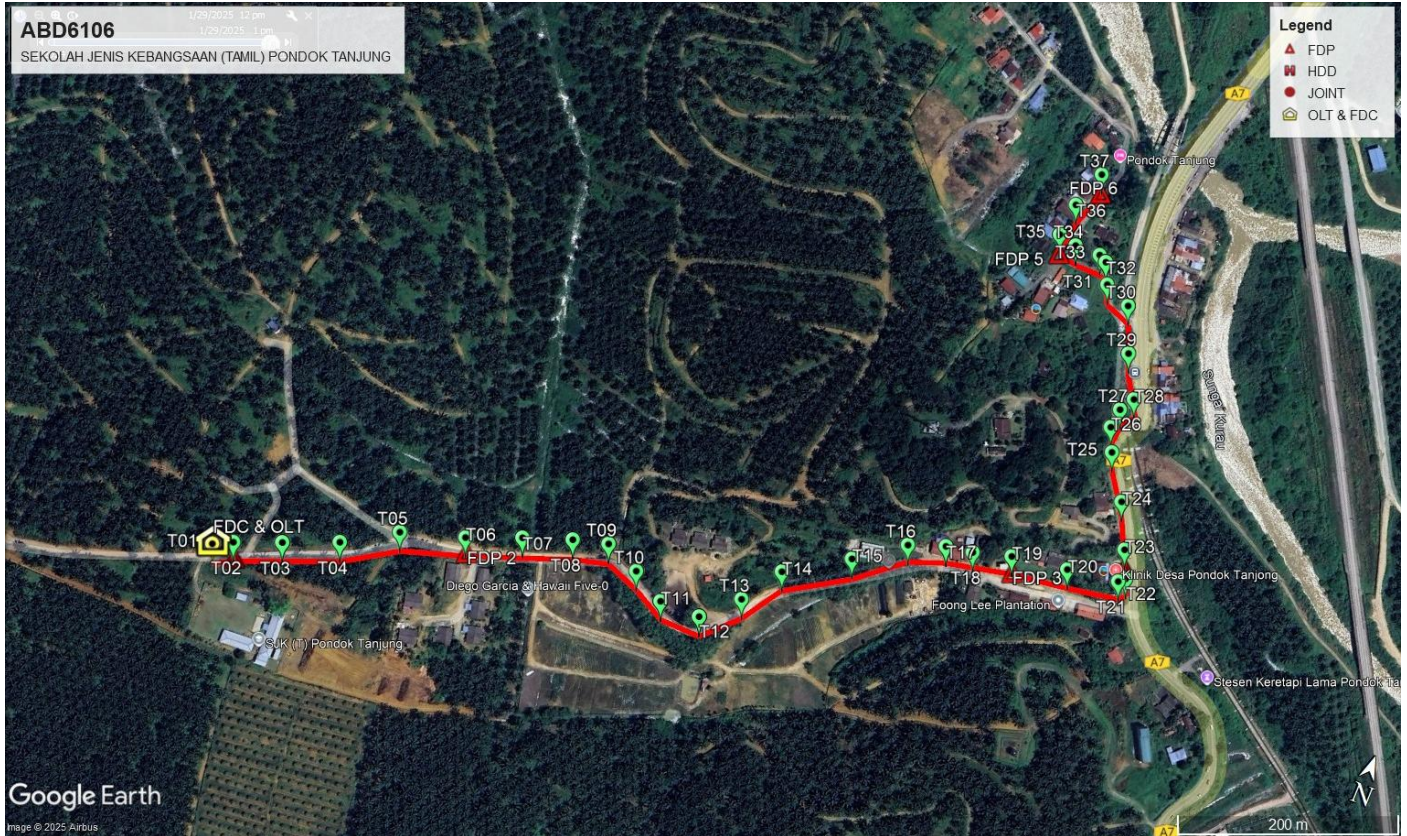
2.0 LOCAL AUTHORITY SUMMARY

Daerah Manjung

NO	ITEMS	Owner	Quantity	Distance (m)
1	HDD	JKR	-	-
		Majlis	-	-
		Estate / Private Land	-	-
2	New Pole	JKR	9	300
		Majlis	28	1500
		Estate / Private Land	-	-
Total Distance (m)				1800M

3.0 SITE PLAN (KMZ)

3.1 Overview Site Area



3.2 Overview FDP Location



3.3 Site Plan - KMZ Routing (All Local Authority)



Red Colour - Majlis Road
Yellow Colour- JKR Road



PROJEK PENYEDIAAN DAN PENYELENGGARAAN POINT OF PRESENT (POP) FASA 2: HAB INFRASTRUKTUR GENTIAN OPTIK BERHAMPIRAN DENGAN SEKOLAH, KAWASAN PERINDUSTRIAN, PREMIS KERAJAAN DAN KOMUNITI SEKITARNYA OLEH KEMENTERIAN KOMUNIKASI MALAYSIA - ZON UTARA (KKMM.400-11/17/132(1))



4.0 PROPOSED NEW MANHOLE

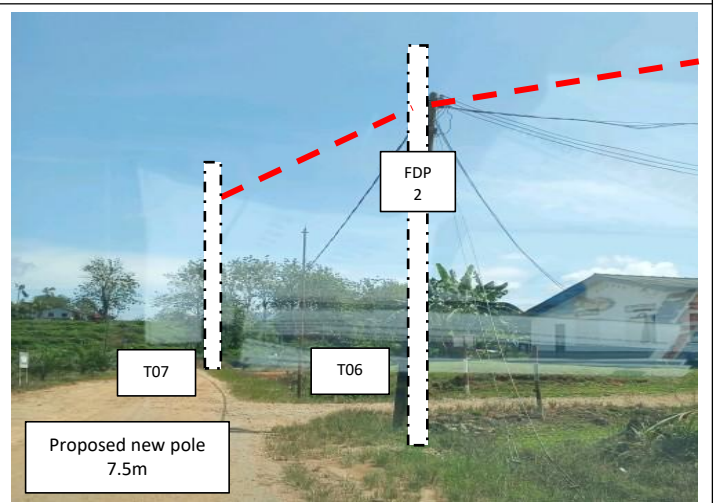
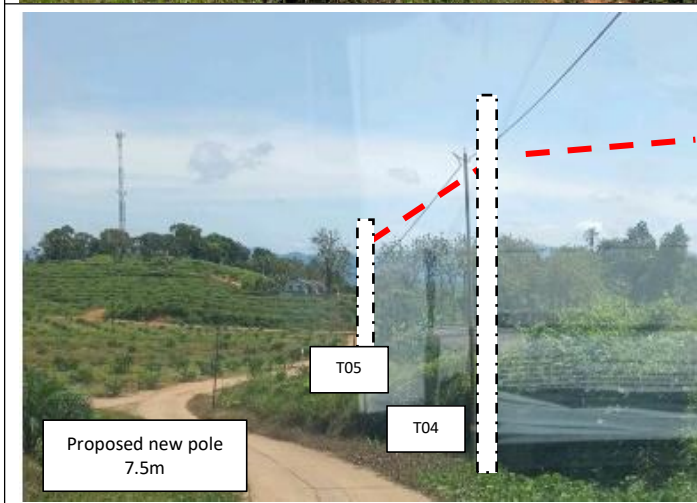
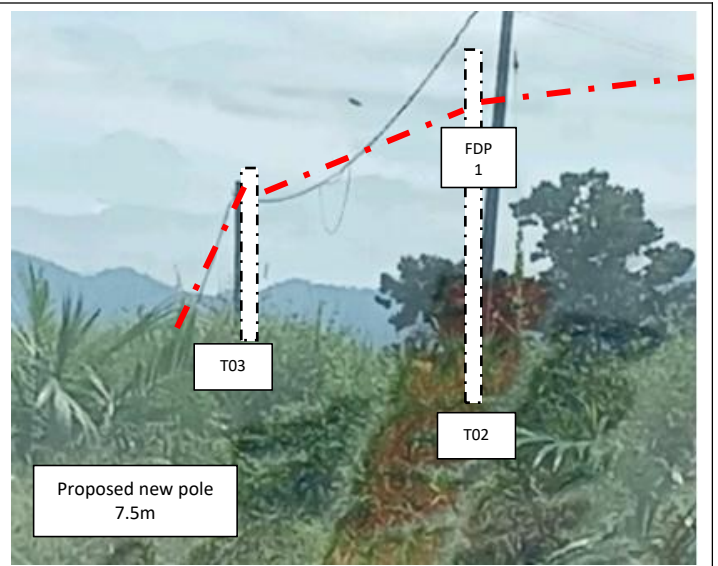
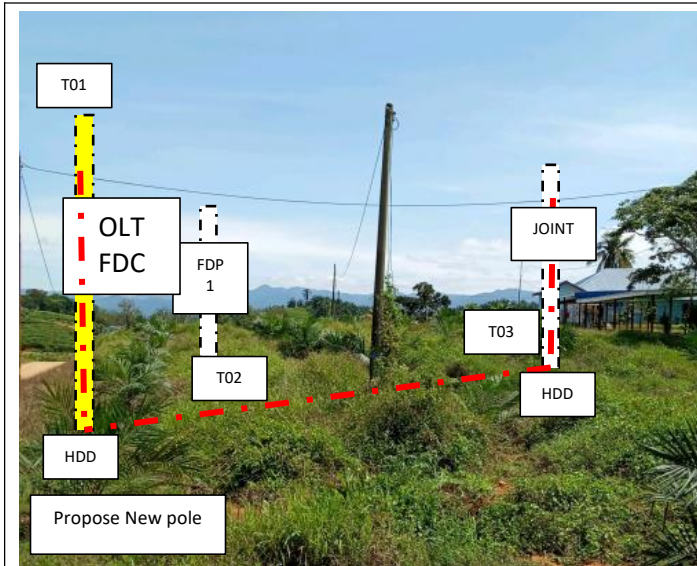
Proposed New Manhole Coordinate					
No.	Manhole Number	Distance (m)	Latitude	Longitude	Local Authority
1	MH01	-	-	-	-
2	MH02	-	-	-	-

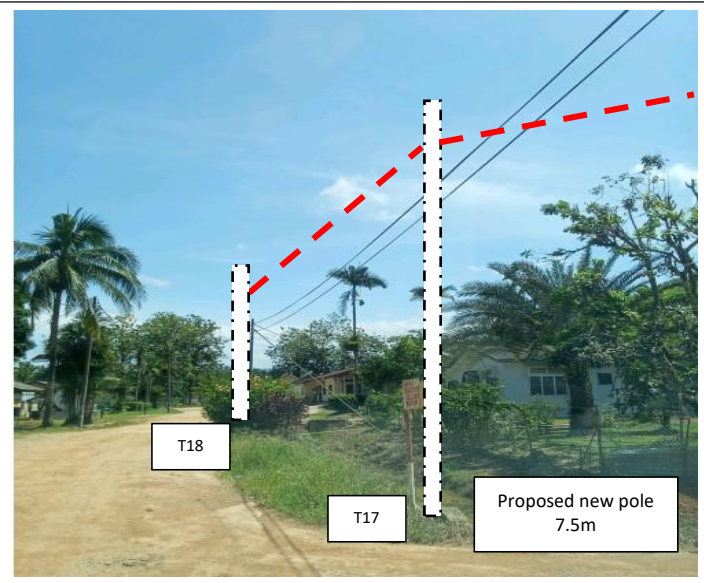
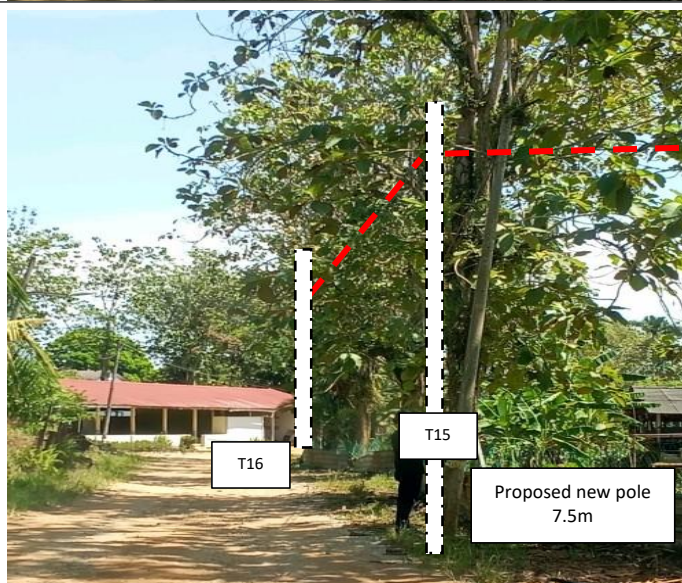
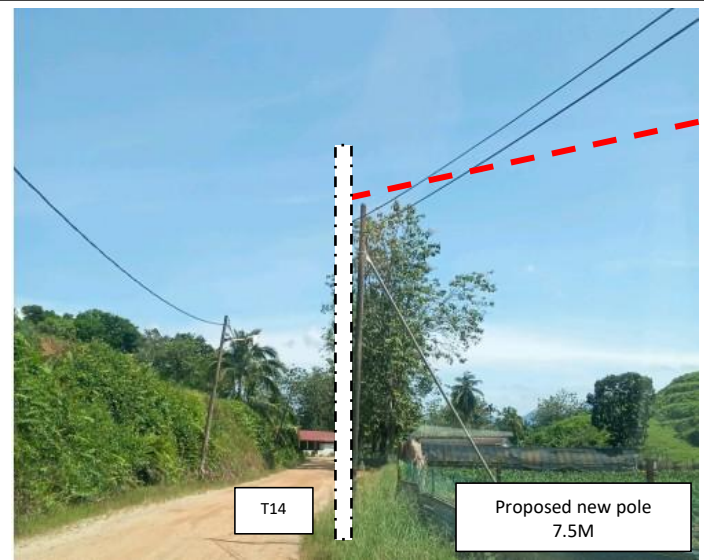
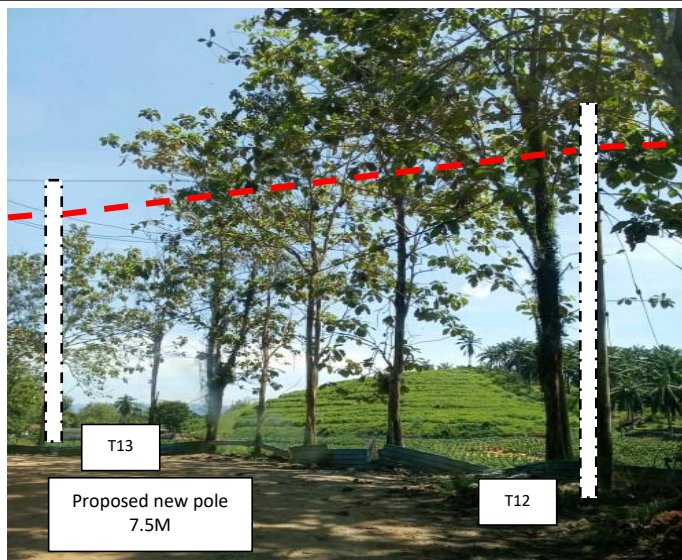
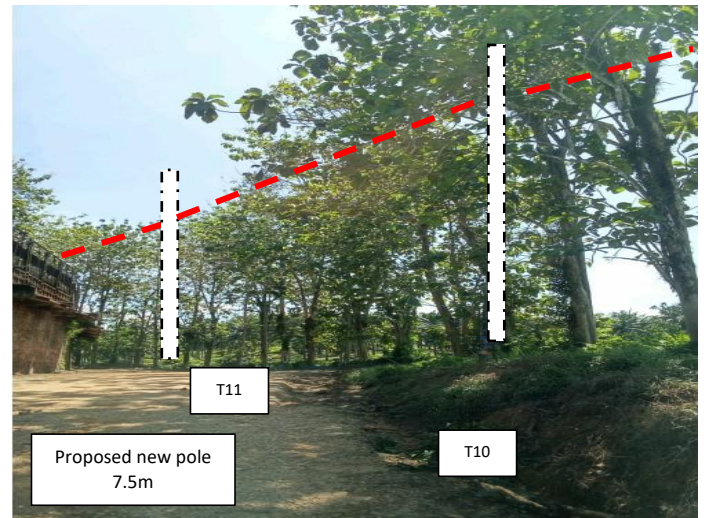
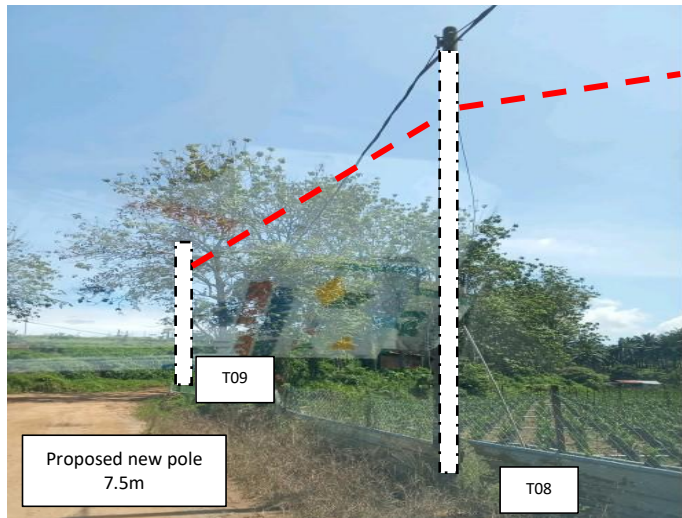
5.0 PROPOSED NEW POLE

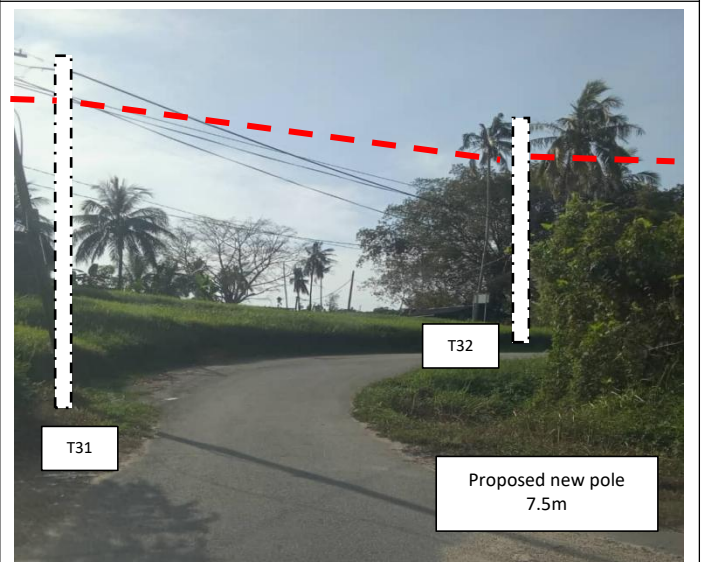
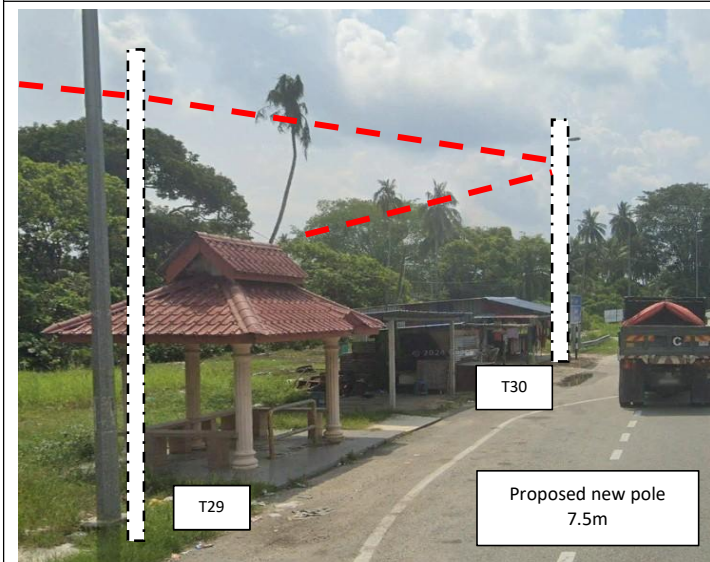
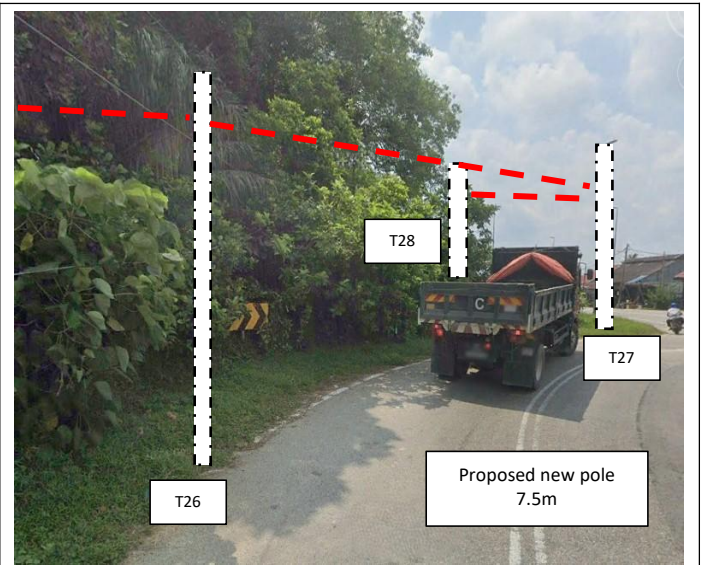
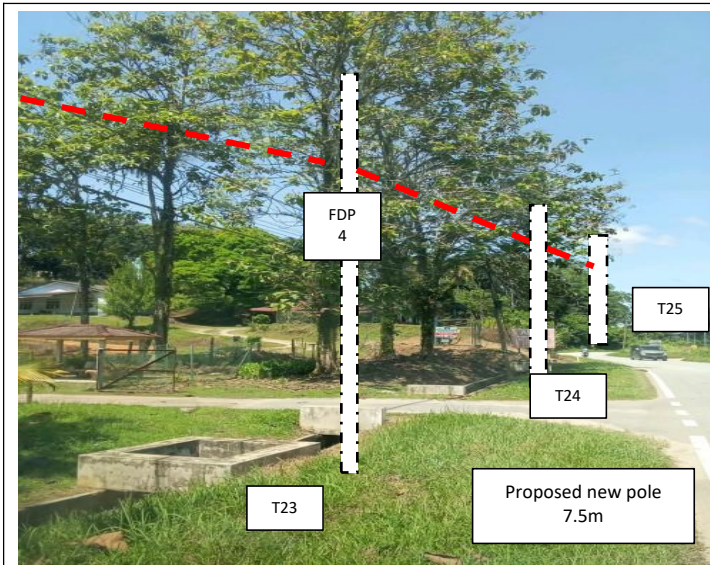
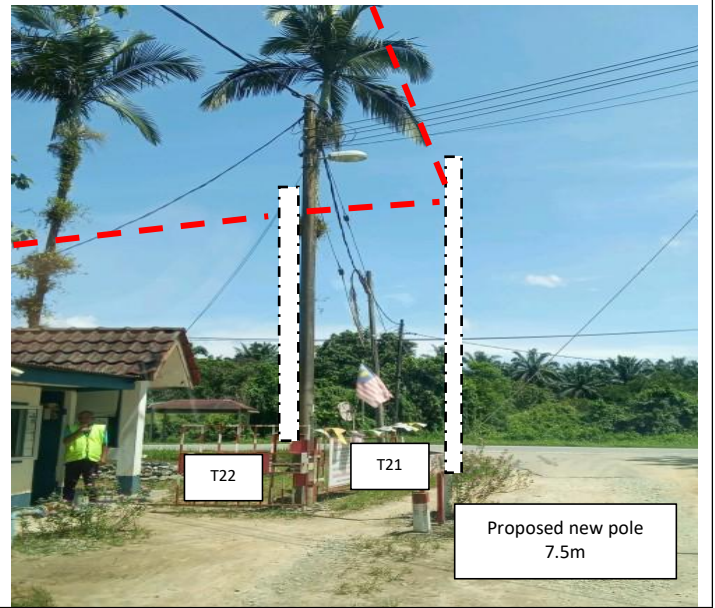
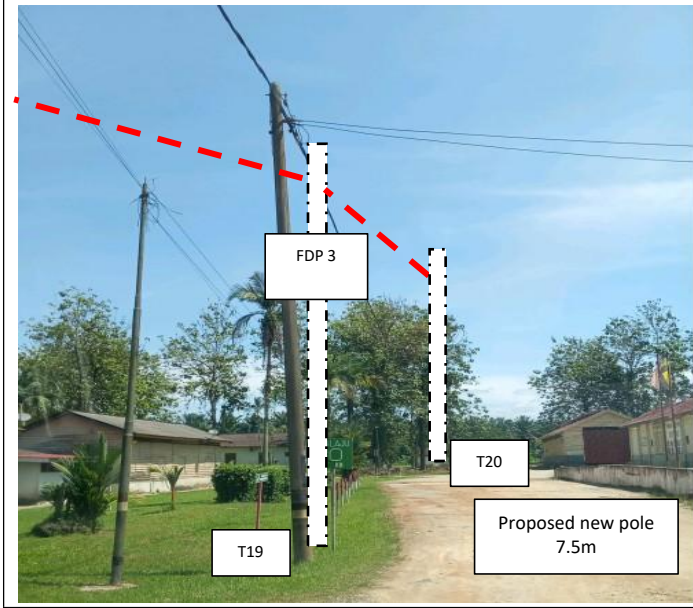
Proposed New Pole Coordinate					
No.	Pole Number	Distance (m)	Latitude	Longitude	Local Authority
1	T001(OLT&FDC)	18	5.005961	100.724307	MAJLIS DAERAH KERIAN
2	T002 (FDP 1)	44	5.005994	100.724469	MAJLIS DAERAH KERIAN
3	T003	51	5.006138	100.724838	MAJLIS DAERAH KERIAN
4	T004	52	5.006308	100.725262	MAJLIS DAERAH KERIAN
5	T005	55	5.006558	100.725676	MAJLIS DAERAH KERIAN
6	T006 (FDP 2)	50	5.006751	100.726178	MAJLIS DAERAH KERIAN
7	T007	45	5.006880	100.726608	MAJLIS DAERAH KERIAN
8	T008	32	5.007015	100.726992	MAJLIS DAERAH KERIAN
9	T009	36	5.007091	100.727275	MAJLIS DAERAH KERIAN
10	T010	34	5.006970	100.727565	MAJLIS DAERAH KERIAN
11	T011	38	5.006817	100.727838	MAJLIS DAERAH KERIAN
12	T012	41	5.006819	100.728174	MAJLIS DAERAH KERIAN
13	T013	42	5.007077	100.728441	MAJLIS DAERAH KERIAN
14	T014	55	5.007404	100.728661	MAJLIS DAERAH KERIAN
15	T015	52	5.007709	100.729151	MAJLIS DAERAH KERIAN
16	T016	35	5.007980	100.729531	MAJLIS DAERAH KERIAN
17	T017	25	5.008084	100.729824	MAJLIS DAERAH KERIAN
18	T018	36	5.008120	100.730046	MAJLIS DAERAH KERIAN
19	T019 (FDP 3)	50	5.008235	100.730347	MAJLIS DAERAH KERIAN
20	T020	47	5.008274	100.730804	MAJLIS DAERAH KERIAN
21	T021	7	5.008338	100.731228	MAJLIS DAERAH KERIAN
22	T022	29	5.008379	100.731280	JKR KERIAN
23	T023 (FDP 4)	42	5.008608	100.731189	JKR KERIAN
24	T024	45	5.008947	100.731023	JKR KERIAN
25	T025	23	5.009288	100.730798	JKR KERIAN
26	T026	18	5.009475	100.730716	JKR KERIAN
27	T027	18	5.009635	100.730736	JKR KERIAN
28	T028	41	5.009756	100.730813	JKR KERIAN
29	T029	43	5.010082	100.730630	JKR KERIAN
30	T030	27	5.010443	100.730488	JKR KERIAN
31	T031	20	5.010541	100.730267	MAJLIS DAERAH KERIAN
32	T032	8	5.010711	100.730193	MAJLIS DAERAH KERIAN
33	T033	22	5.010746	100.730126	MAJLIS DAERAH KERIAN
34	T034	17	5.010748	100.729916	MAJLIS DAERAH KERIAN
35	T035 (FDP 5)	32	5.010787	100.729765	MAJLIS DAERAH KERIAN
36	T036	37	5.011068	100.729802	MAJLIS DAERAH KERIAN
37	T037 (FDP 6)	35	5.011385	100.729913	MAJLIS DAERAH KERIAN

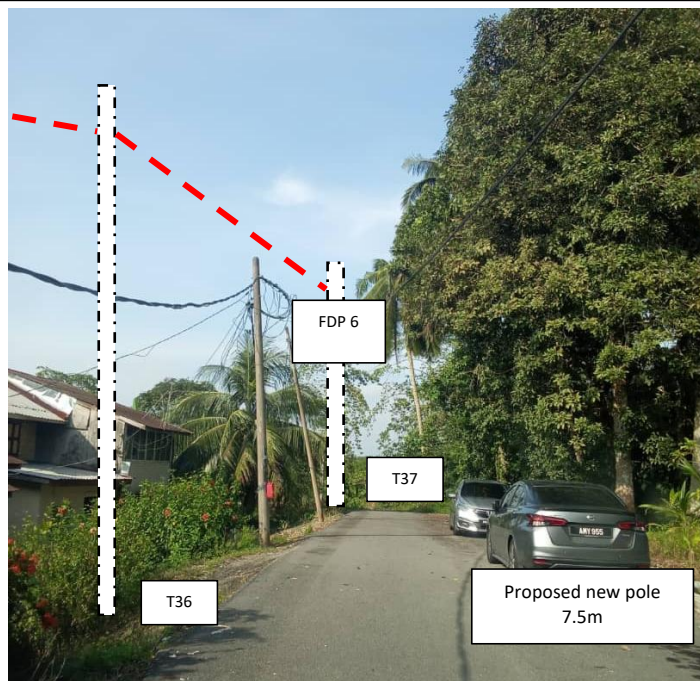
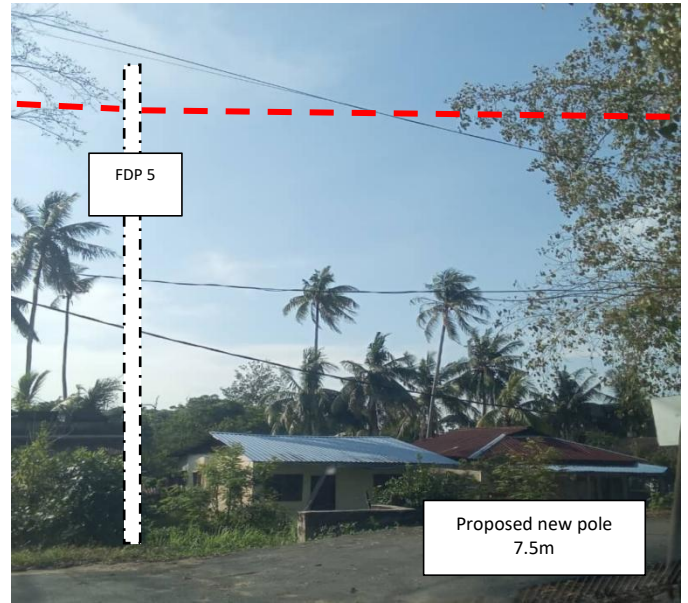
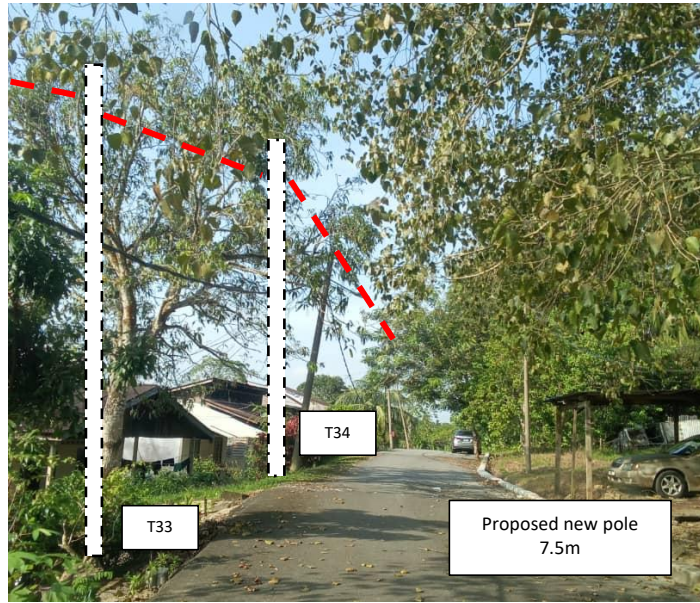
Bil	Type	7.5m	9.0m	Total
1.	No Of Pole	36	1	37

6.0 SITE PHOTOS - PROPOSED NEW POLE











PROJEK PENYEDIAAN DAN PENYELENGGARAAN POINT OF PRESENT (POP) FASA 2: HAB INFRASTRUKTUR GENTIAN OPTIK BERHAMPIRAN DENGAN SEKOLAH, KAWASAN PERINDUSTRIAN, PREMIS KERAJAAN DAN KOMUNITI SEKITARNYA OLEH KEMENTERIAN KOMUNIKASI MALAYSIA - ZON UTARA (KKMM.400-11/17/132(1))



7.0 3rd PARTIES DEPENDENCIES

NO	LOCAL COUNCIL / AUTHORITY	REMARK
1	JKR KERIAN	300 M
2		

