

SURUHANJAYA TENAGA
 TINGKAT 13, MENARA TABUNG HAI PERDANA,
 1001 JALAN SULTAN ISMAIL,
 50250 KUALA LUMPUR.
 TEL : +603-2612 5400
 FAX : +603-2693 7791

NO	DESIGN DETAIL
1	DESIGN CODE
2	DESIGN PRESSURE
3	MAXIMUM ALLOWABLE OPERATING PRESSURE
4	MIN. SPECIFIED TEST PRESSURE
5	WELDED
6	CLASS LOCATION
7	DESIGN TEMPERATURE

LEGENDS:-

	PIPELINE NPS 12
	UVC 300
	CONCRETE SLAB
	CONCRETE MARKER
	INVERTING SCHEIDBOARD
	CP POST
	CLOSE VALVE
	END CAP

MATERIALS SPECIFICATION

DA. OF PIPE	TYPE OF PIPE	WALL THICKNESS	LENGTH
NPS 12	API 5L X 42	6.4mm	250m
NPS 8	API 5L X 42	5.6mm	
NPS 6	API 5L GRADE B / X 42	4.8mm	
NPS 4	API 5L GRADE B / X 42	4.8mm	

BILL OF MATERIALS

ITEM	DESCRIPTION	QUANTITY
1	NPS 12	250 m
2	UVC 300	197 pcs
3	Concrete Slab	12 pcs
4	Concrete Marker	7 nos
5	Elbow 90° NPS 12	1 nos
6	Reducer for NPS 12x8	1 nos
7	Reducer for NPS 12x6	1 nos
8	CP Post	1 nos
9	End Cap	1 nos

REFERENCE DRAWING :

NO.	DRAWING TITLE	DRAWING NO.
1	LOCATION PLAN AND PIPELINE ROUTE MAP	MC38/0458/STIAW1/ST_02/01/18/AB
2	ROUTE AND PROFILE INDEX PLAN	MC38/0458/STIAW1/ST_02/01/18/AB
3	SCHEMATIC DIAGRAM AND VALVE DESIGNATION	MC38/0458/STIAW1/ST_02/01/18/AB

REVISION :

NO.	DATE	DESCRIPTION	DESIGN	DRAWN	CHK.	APPR.
01	15 Jun 2005	Issued for Approval	JW	MS	SH	AI
02	08 Jul 2005	Issued for Approval	JW	MS	SH	AI
03	25 Jun 2005	As-built (REV 01)	JW	MS	SH	AI
04	16 Mar 2006	As-built (REV 02)	JW	MS	SH	AI
05	21 Jul 2005	As-built (REV 03)	JW	MS	SH	AI
06	21 Jul 2005	As-built (REV 04)	JW	MS	SH	AI

GAS MALAYSIA SDN. BHD.
 1001, JALAN SUREKHANI 24/17,
 SUDSYEN 26,
 40150 SHAH ALAM,
 SELANGOR DARUL EHSAN.
 TEL NO : 03 - 5192 - 3000
 FAX NO : 03 - 5192 - 0786

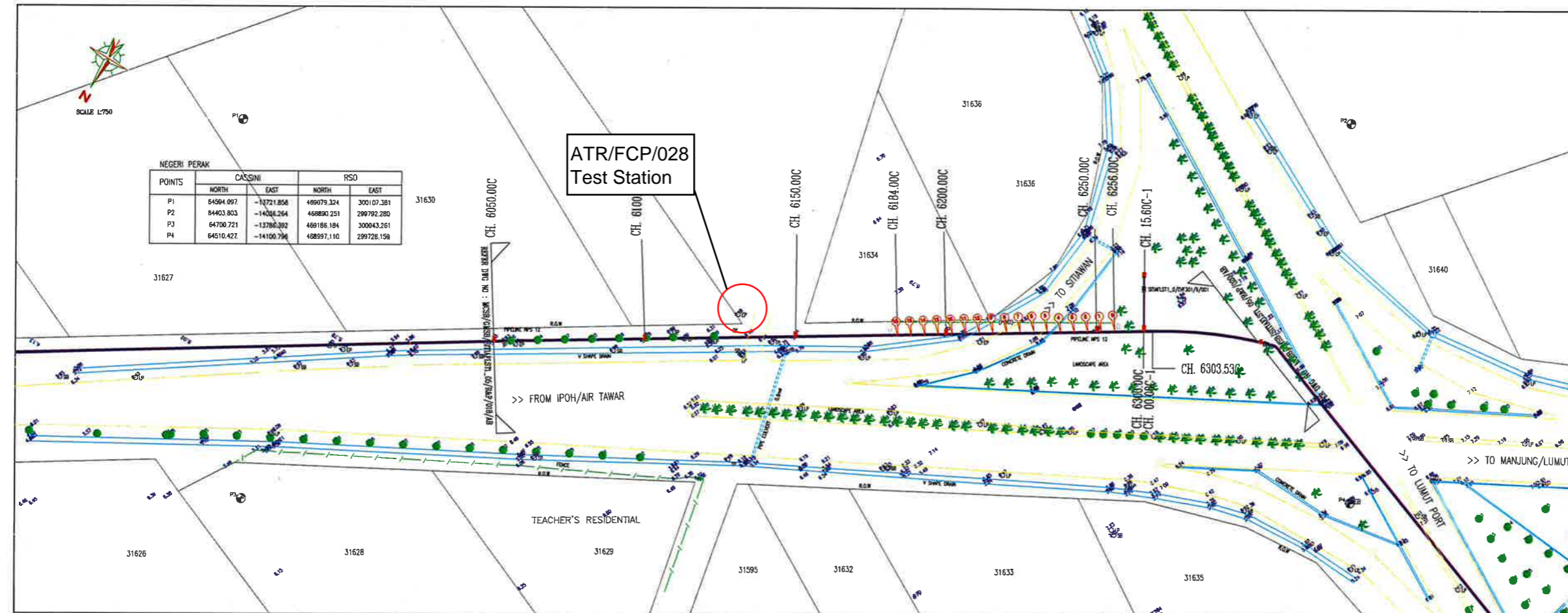
MASMINIR
 CORPN. SDN. BHD.
 No. 2 Jalan G1 1/13-1, Pusat Bandar Cheras Jaya
 43000 Cheras, Selangor Darul Ehsan, Malaysia.
 TEL : 03-89721118/8972111, 8972122
 FAKS : 03-89721119

JURUUKUR SUTERA
 Perunding Ukur Kejuruteraan, Akademi Teknik,
 Struktur, Hidrologi, Fotogrametri, Topografi,
 Perencanaan, GPS dan GIS.
 Lot 706-C, 10th Floor 3, Kompleks Diamond, being Business Park,
 43000 Bandar Baru Bangs, Selangor Darul Ehsan.
 Tel: 03-8210 1308 Fax: 03-8210 1307
 email: gjar@msa.net.my

PROJECT TITLE:
EPCB OF NATURAL GAS DISTRIBUTION SYSTEM TO SITIAWAN FL STAGE 1/05, SITIAWAN, PERAK DARUL RDZUAN.

DRAWING TITLE:
**AS-BUILT GAS PIPELINE ALIGNMENT ROUTE AND PROFILE
 CH. 6050.00C - CH. 6303.53C - NPS 12
 CH. 00.00C-1 - CH. 15.60C-1 - NPS 6
 HDD DRAWING DETAIL F
 (JALAN AIR TAWAR - SITIAWAN)**

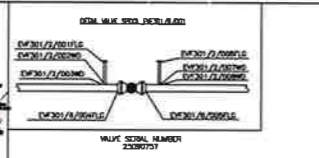
DESIGNED BY	JW	OWNER APPROVAL	
DRAWN BY	MS		
CHECKED BY	SHW		
APPROVED BY	U.ABUBAH		
DATE	05/2006		



NEGERI PERAK

POINTS	CASSINI	RSD
	NORTH	EAST
P1	64594.097	-13721.856
P2	64403.803	-14204.264
P3	64700.721	-13786.392
P4	64510.427	-14100.794

ATR/FCP/028
Test Station



Gas Malaysia Berhad's agents, retailers, officers and employees (hereinafter defined as "We") make no representations, guarantees or warranties as to the accuracy, reliability and completeness of any information, materials or data contained on this document.

We disclaim all liabilities whatsoever for any loss or damage resulting directly or indirectly from the use of this document.

Please make it your personal responsibility to verify any information available herein. We suggest that you seek independent professional advice before making any form of decision based on information obtained from this document.

Datum RL : -5m

CHAINAGE PIPELINE IN METER	GROUND LEVEL IN METER	LEVEL PIPELINE IN METER	DEPTH OF COVER IN METER	JOINT NO.	RSD COORDINATE	SCHEMATIC	CLASS LOCATION	CONSTRUCTION METHOD
270	4.08	4.05	0.03			PIPELINE NPS 12	(-)	(-13.00m) (OPEN CUT)
270	4.08	4.05	0.03			PIPELINE NPS 12 (HDD)	(-)	(-7.00m) (HDD)
270	4.08	4.05	0.03			PIPELINE NPS 12	(-)	(-67.83m) (OPEN CUT)
270	4.08	4.05	0.03			PIPELINE NPS 6	(-)	(-13.80m) (OPEN CUT)

