

TECHNICAL PROPOSAL

	
<p>PPU GIP 1L5</p>	<p>PPU SIMPANG PULAI 3L5</p>
<p>LAT/LONG: 4.49461°N 101.14191°E</p>	<p>LAT/LONG: 4.52560°101.12416°E</p>
<p>CIVIL INFRASTRUCTURE AND FIBRE OPTIC CABLING SYSTEM</p>	
<p>PROJECT NAME: INSTALL OF NEW FIBRE PPU SIMPANG PULAI TO PPU GIP 1L5</p>	
<p>REGION: NORTHERN (GOPENG)</p>	
<p>SITE/LINK: PPU GIP 1L5 TO PPU SIMPANG PULAI 3L5</p>	

Table Of Content

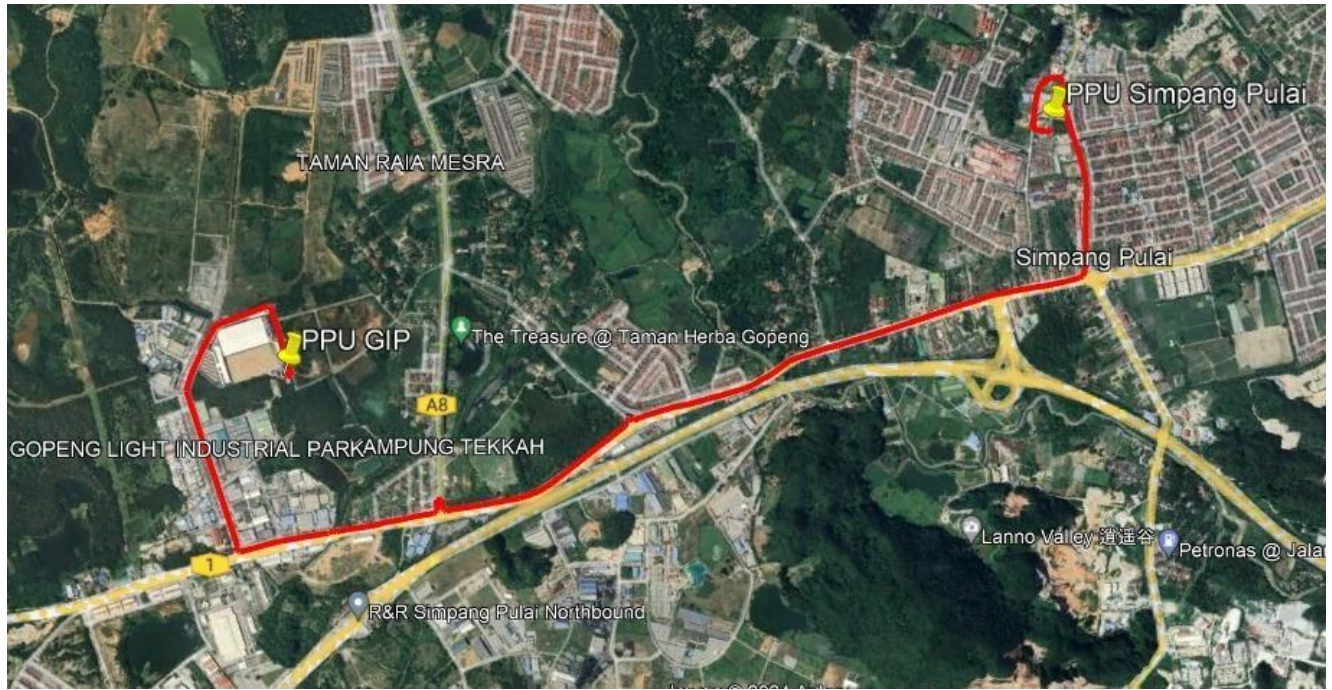
- Section 1: Proposed Manhole Coordinates
- Section 2: OSP and ISP Routing Plan
- Section 3: OSP and ISP Snapshot/ Photo



Section 1: PROPOSED MANHOLE COORDINATES

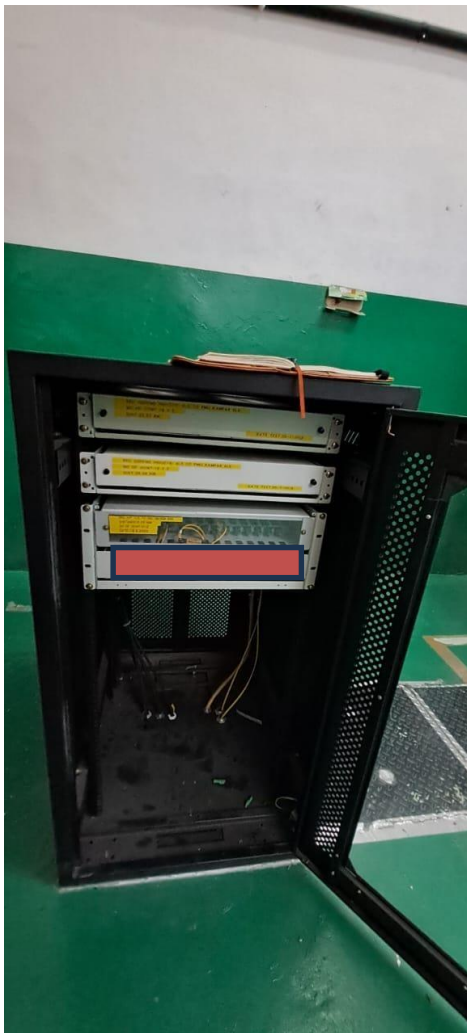
Bil	Manhole	Lat	Long	Road	Method OF Statement
1	MH1	4.494533N	101.141931E	GOPENG LIGHT INDUSTRIAL PARK	MT: 13m
2	MH2	4.493579N	101.140085E	JLN.INDUSTRI 1/1	HDD: 230m
3	MH3	4.493041N	101.139101E	JLN.INDUSTRI 1/1	HDD: 126m
4	MH4	4.491223N	101.140248E	JLN.INDUSTRI 1/1	HDD: 246m
5	MH5	4.490991N	101.140329E	JLN.INDUSTRI 1/1	HDD: 70m
6	MH6	4.490320N	101.142567E	GOPENG LIGHT INDUSTRIAL PARK	HDD: 255m
7	MH7	4.490974N	101.144745E	LORONG INDUSTRI 1/2	HDD: 260m
8	MH8	4.492096N	101.146823E	LORONG INDUSTRI 1/2	HDD: 255m
9	MH9	4.492409N	101.148593E	JLN.INDUSTRI 1/1	HDD: 230m
10	MH10	4.494600N	101.149757E	OPP PETRON GOPENG	HDD: 250m
11	MH11	4.496677N	101.148824E	OPP PETRON GOPENG	HDD: 255m
12	MH12	4.497808N	101.148379E	JLN.INDUSTRI 1/1	HDD: 130m
13	MH13	4.498146N	101.148392E	PERSIARAN TEKKAH 1C	HDD: 70m
14	MH14	4.500208N	101.147486E	OPPOSITE KG. TERSUSUN TEKKAH	HDD: 250m
15	MH15	4.502222N	101.146667E	PERSIARAN TEKKAH 1G	HDD: 230m
16	MH16	4.504167N	101.145833E	JLN. IPOH-KAMPAR	HDD: 250m
17	MH17	4.506111N	101.145E	JLN. IPOH-KAMPAR	HDD: 250m
18	MH18	4.507778N	101.143333E	JLN. IPOH-KAMPAR	HDD: 250m
19	MH19	4.509167N	101.141667E	PERSIARAN SERI RAJA	HDD: 258m
20	MH20	4.509722N	101.141111E	PERSIARAN SERI RAJA	HDD: 90m
21	MH21	4.511667N	101.139722E	PERSIARAN SERI RAJA	HDD: 260m
22	MH22	4.515278N	101.138056E	PERSIARAN SERI RAJA	HDD: 250m
23	MH23	4.515278N	101.138056E	PERSIARAN SERI RAJA	HDD: 195m
24	MH24	4.515833N	101.1375E	PERSIARAN SERI RAJA	MT: 85m
25	MH25	4.517222N	101.136389E	JLN.KG. KEPAYANG	HDD: 205m
26	MH26	4.518333N	101.135556E	JLN.KG. KEPAYANG	HDD: 148m
27	MH27	4.520278N	101.134444E	JLN.IPOH - KAMPAR	HDD: 140m
28	MH28	4.522222N	101.133333E	JLN.TAMAN PULAI JAYA	HDD: 260m
29	MH29	4.524167N	101.132222E	JLN. GOPENG	HDD: 250m
30	MH30	4.526111N	101.131389E	JLN.PULAI JAYA 1	HDD: 250m
31	MH31	4.528333N	101.130278E	JLN. SULTAN NAZRIN SHAH	HDD: 260m
32	MH32	4.528333N	101.128333E	JLN.PBC 1	HDD: 260m
33	MH33	4.528056N	101.126111E	JLN.PENKALAN, KG. KEPAYANG	HDD: 250m
34	MH34	4.52518N	101.12198E	JLN.PERSIARAN PULAI BARU 2	HDD: 270m
35	MH35	4.526111N	101.121944E	JLN.PERSIARAN PULAI BARU 2	HDD: 250m
36	MH36	4.525N	101.123056E	JLN.PERSIARAN PULAI BARU 2	HDD: 70m
37	MH37	4.525556	101.124167	JLN.PERSIARAN PULAI BARU 2	MT: 170m

Section 2: OSP & ISP ROUTING PLAN (OVERALL ROUTING)

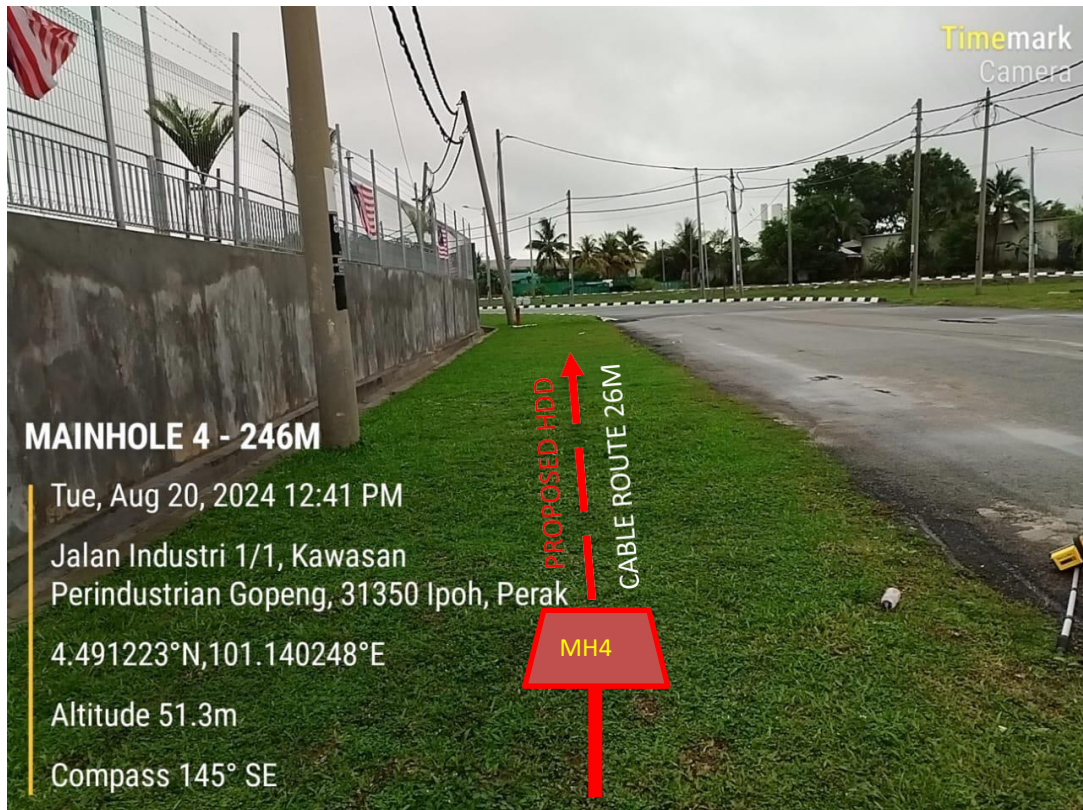


Section 3: OSP AND ISP SNAPSHOT/ PHOTO

PPU GIP 1L5

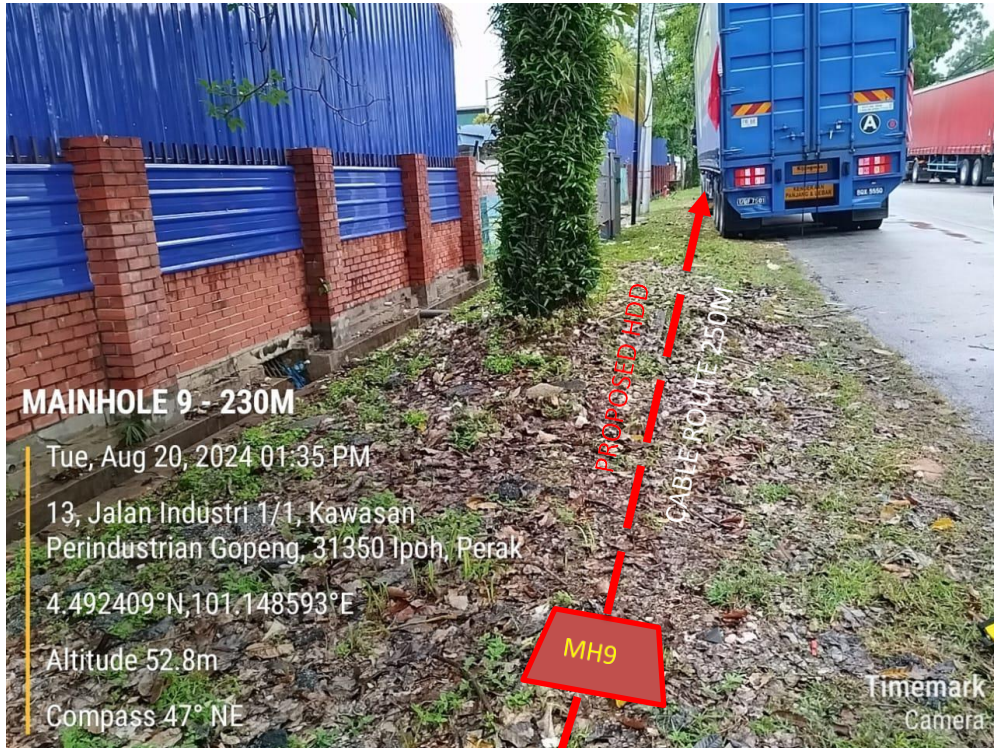


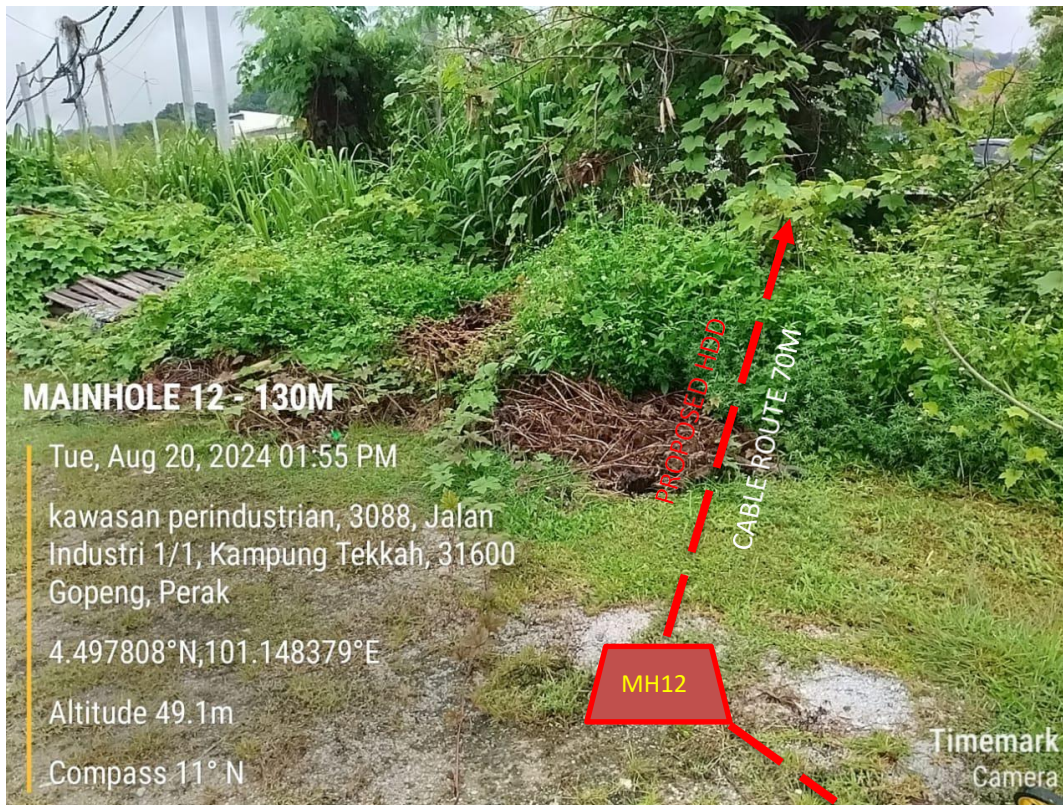


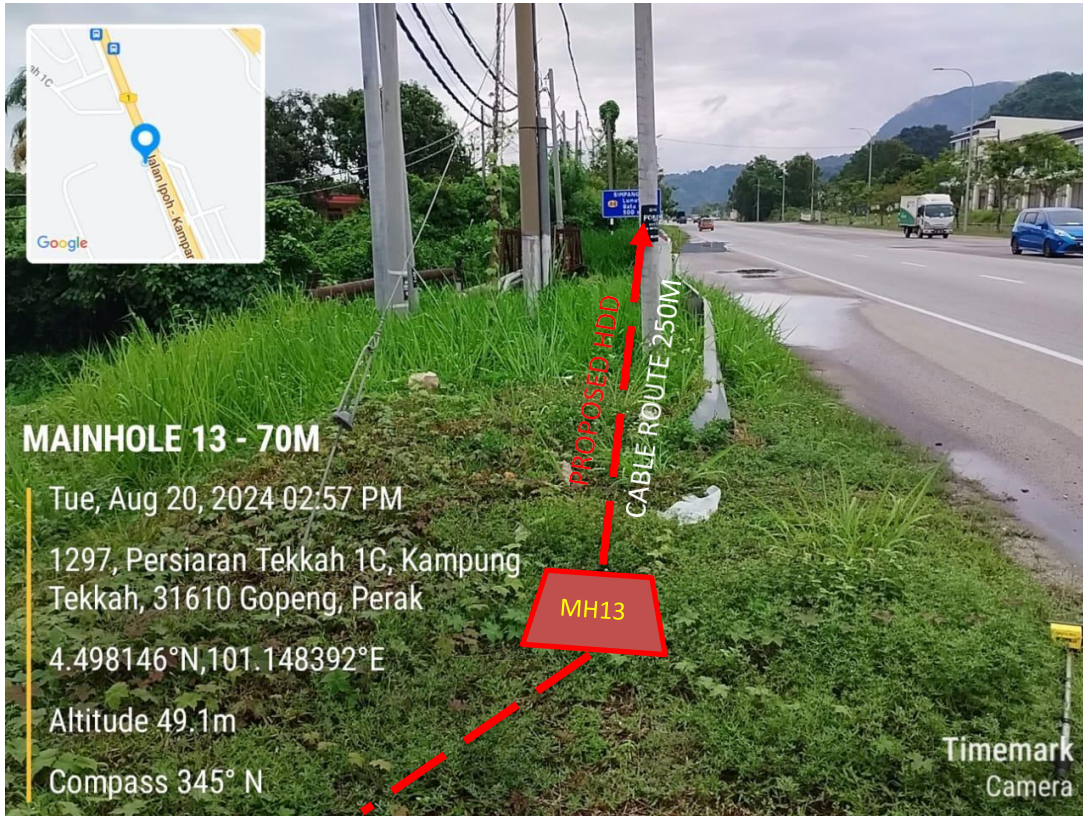




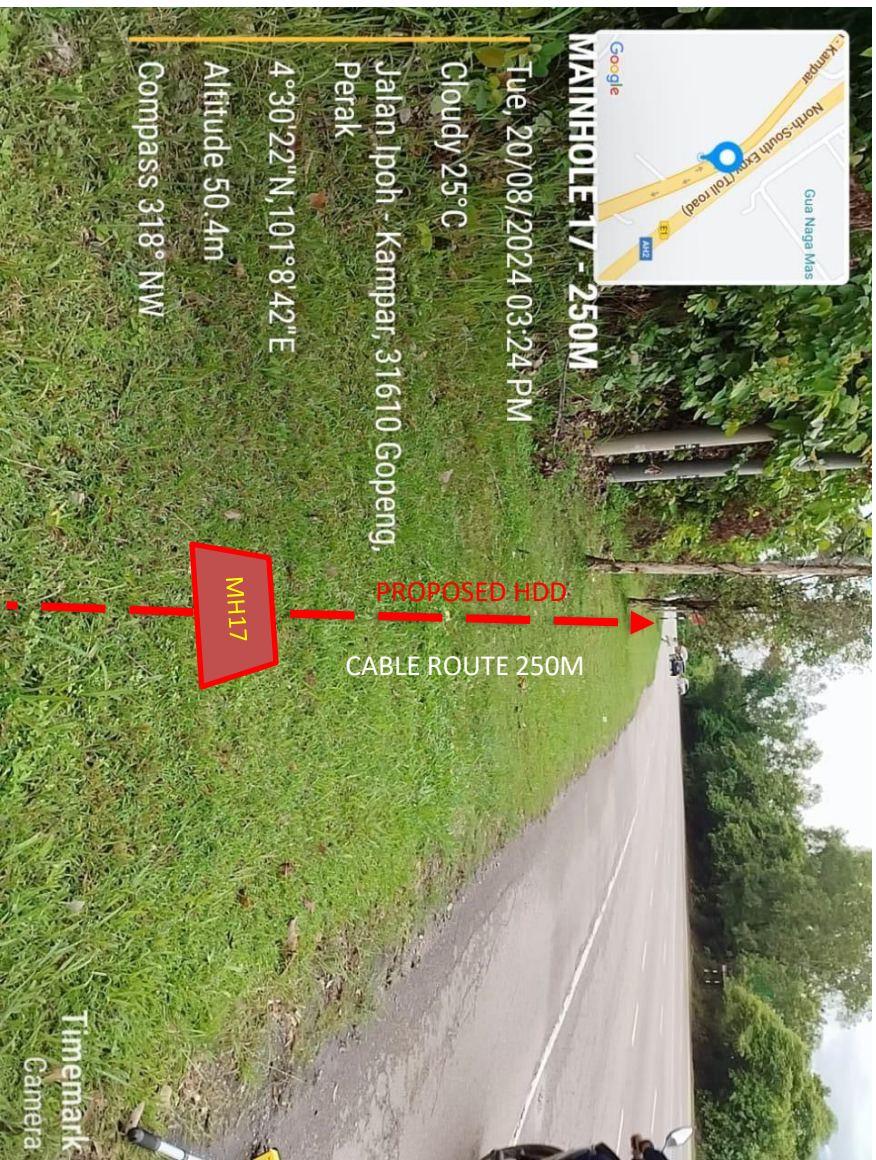






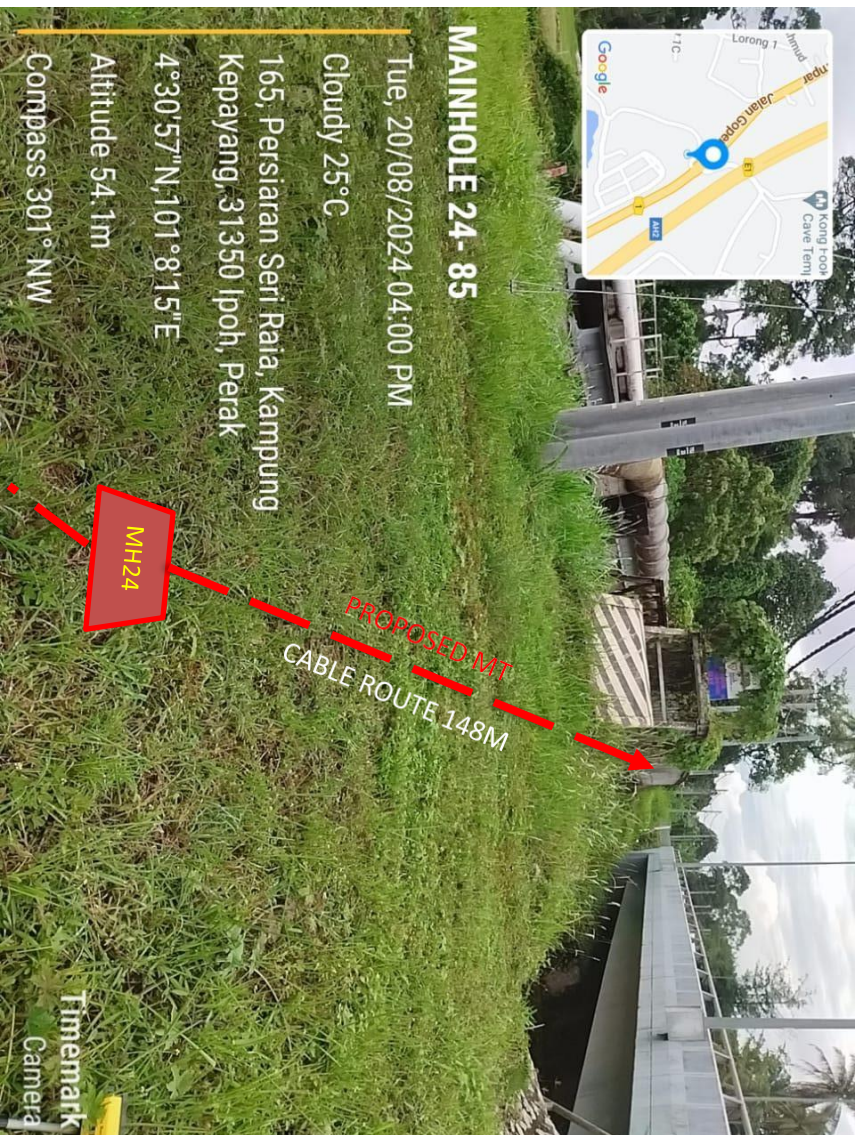
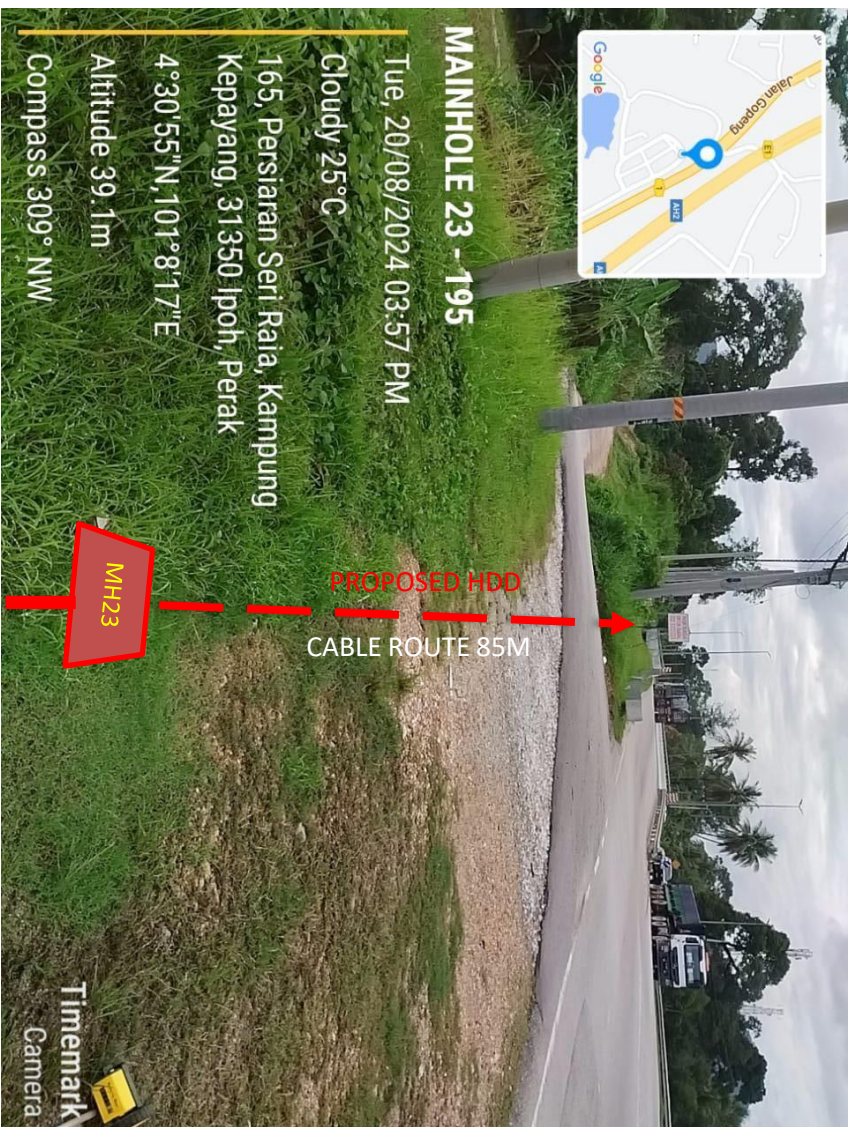


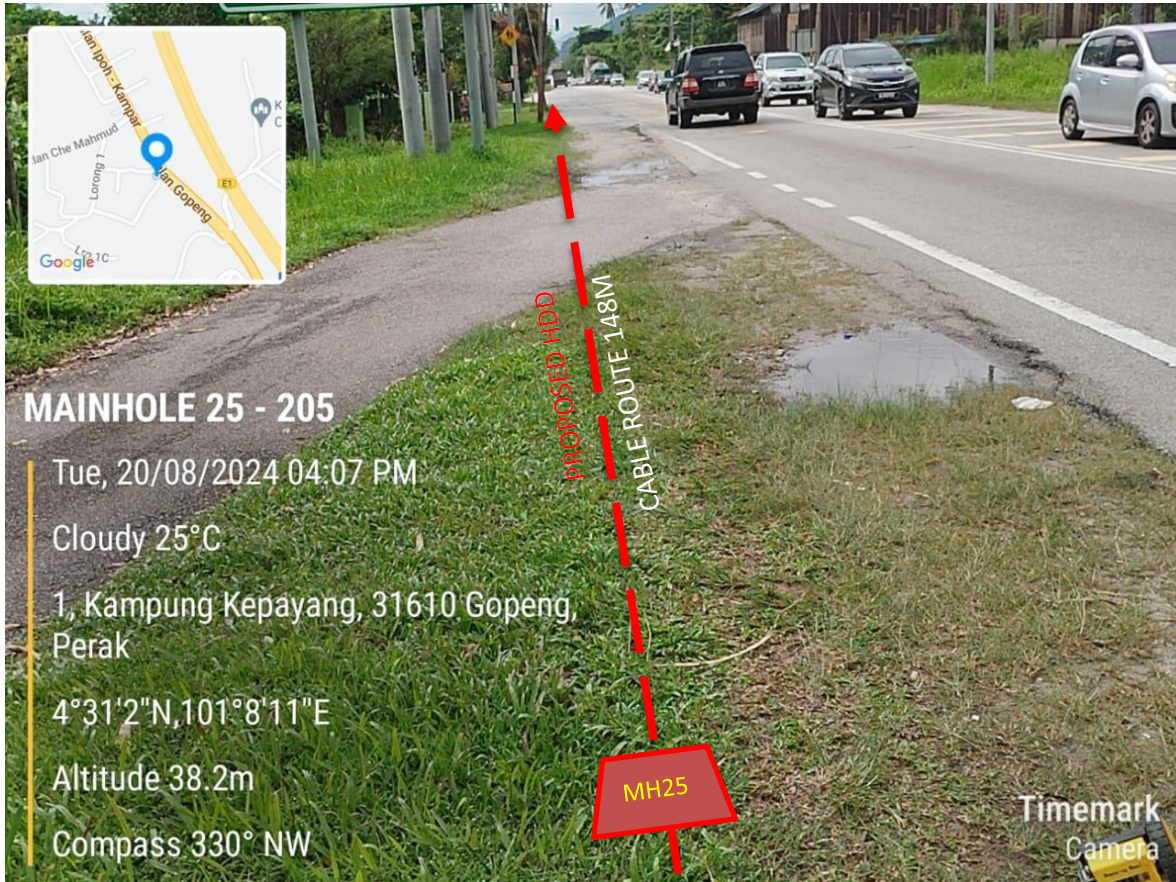


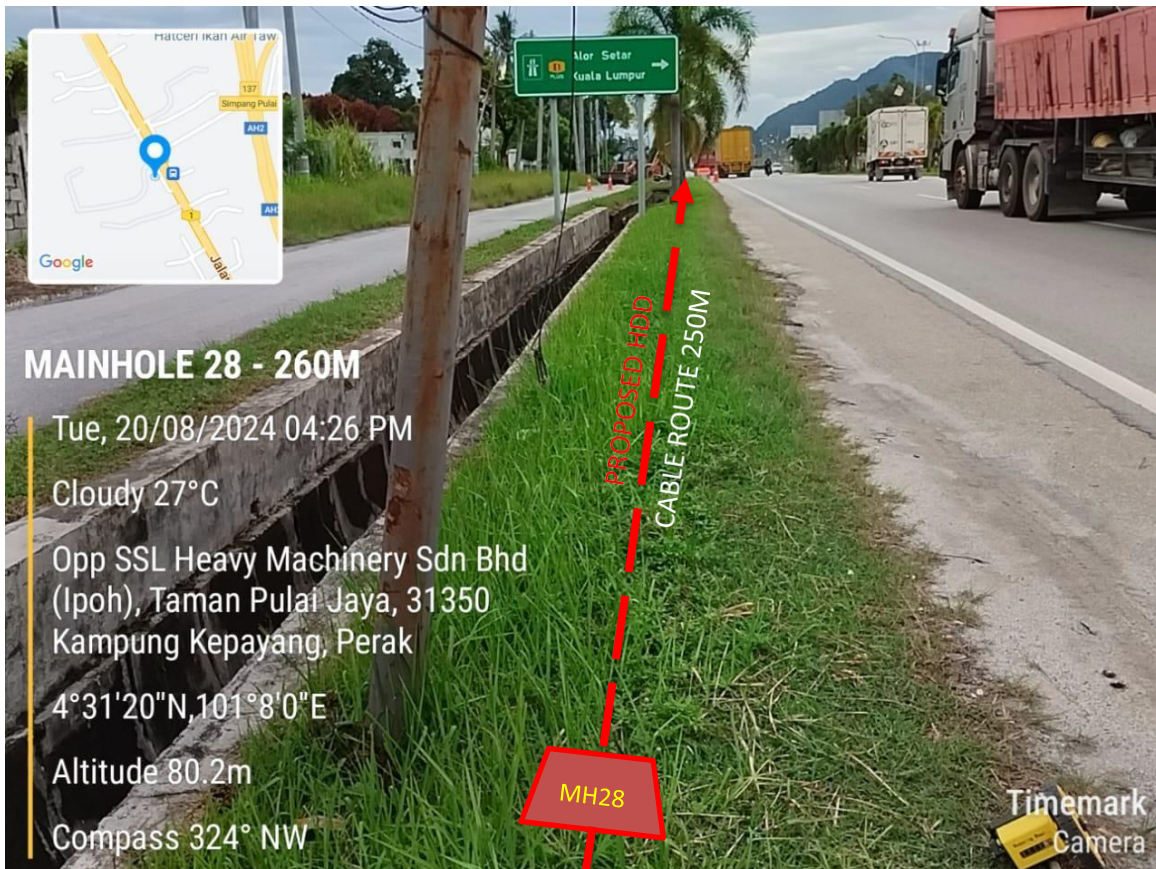


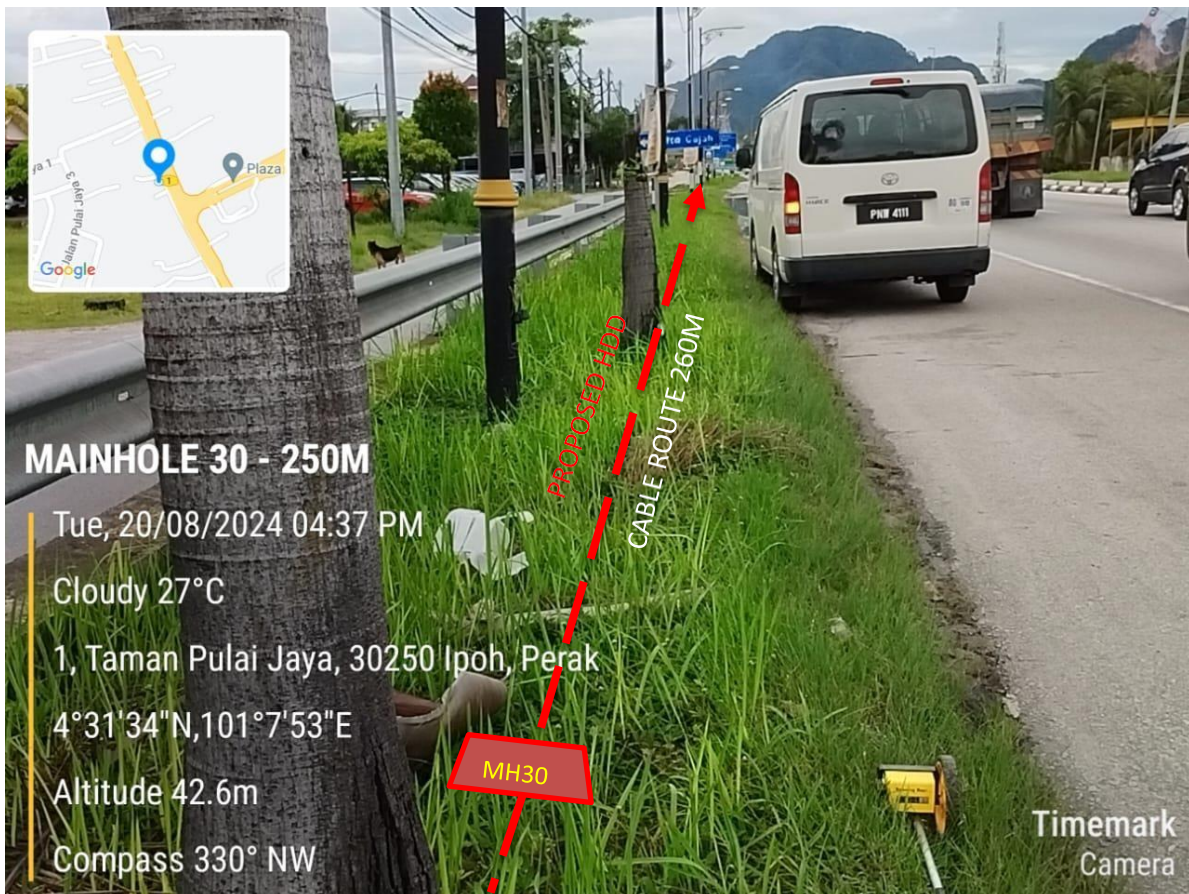


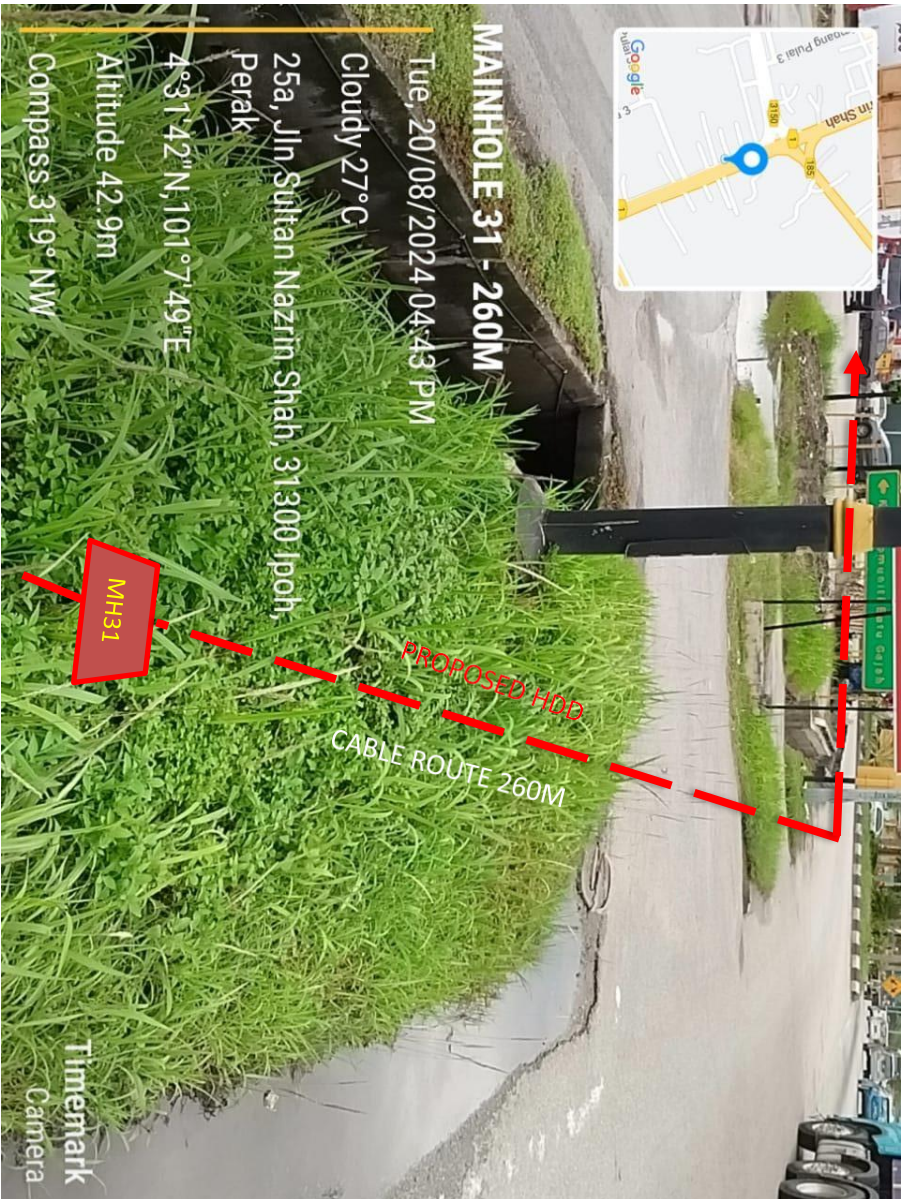
















OSP AND ISP SNAPSHOT/ PHOTO

PPU SIMPANG PULAI



PROPOSED EQUIPMENT LOCATION

