

## TECHNICAL PROPOSAL

### POP2 ABD1093 SEKOLAH JENIS KEBANGSAAN (TAMIL) BERUAS (D-SIDE)

**Company Name** : Alicom Enterprise Sdn Bhd  
**Company Address** : No 9, Jalan Riang 22, Taman Gembira, 81200 Johor Bahru, Johor  
**Prepared By** : Izawana Ali  
**Date** : 28/07/2024



#### Starting Point

**Site / Boundary Name** : Beruas  
**Address** : SJK(T) Beruas, Jalan Siputeh – Batu Hampar, 32700 Beruas, Perak  
**District** : Manjung  
**Postcode** : 32700  
**State** : Perak  
**GPS Coordinate** : 4.503757, 100.767090  
**LRD** : A

#### End Point

**Site / Boundary Name** : Beruas  
**Address** : Laluan Anggerik, Taman Anggerik, 32700 Beruas, Perak  
**District** : Manjung  
**Postcode** : 32700  
**State** : Perak  
**GPS Coordinate** : 4.504386, 100.781209  
**LRD** : B



SUPPLY, INSTALLATION AND COMMISSIONING OF FTTX NETWORK INFRASTRUCTURE FOR ALLO TECHNOLOGY SDN BHD POP 2 PROJECT (D-SIDE) - PMU PRMS FOR ABD1093-SEKOLAH JENIS KEBANGSAAN (TAMIL) BERUAS



## 1.0 WORK SUMMARY

NO	PROPOSED DISTANCE AND METHOD	UNIT	QUANTITY
1	Horizontal Directional Drilling (HDD)	m	0
2	Carriage Way Open Trench (CW)	m	0
3	Grass Verge Open Trenching (GV)	m	0
4	Micro Trenching (MT)	m	0
Total			0

NO	OTHER INFORMATION	UNIT	QUANTITY
1	Installation of Short Span ADSS Fiber Cables	m	3775
2	Install New Pole	ea	97
3	Install New JRC7 Manhole	ea	0
4	Install GI Riser 100mm	ea	0
5	Install Fiber Distribution Point and Closure (Splicing, Termination and Testing)	ea	19
6	Estimated Time Required for Completion	days	30

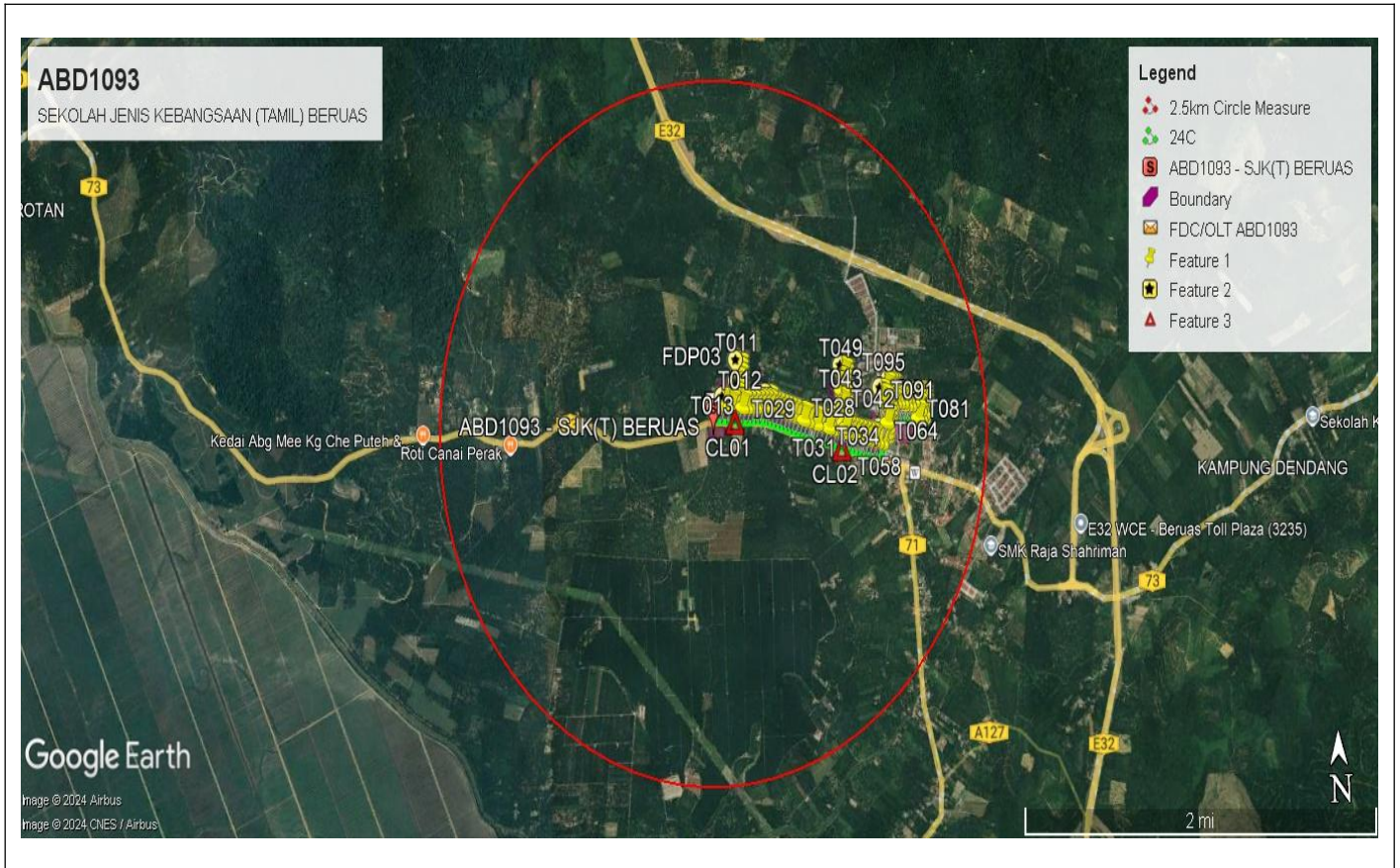
## 2.0 LOCAL AUTHORITY SUMMARY

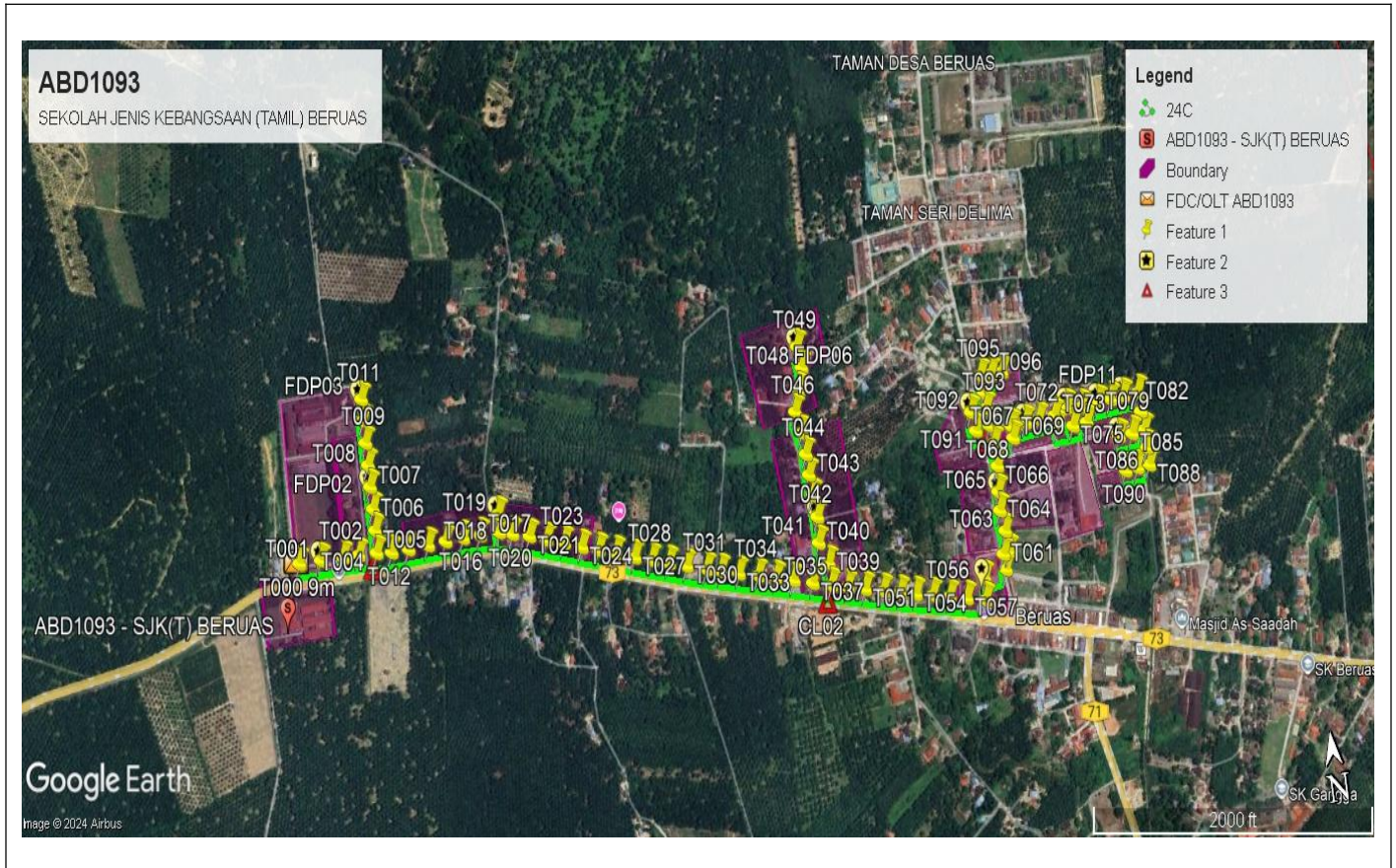
Daerah Manjung

NO	ITEMS	Owner	Quantity	Distance (m)
1	HDD	JKR	-	-
		Majlis	-	-
		Estate / Private Land	-	-
2	New Pole	JKR	40	1,600
		Majlis	58	2,030
		Estate / Private Land	-	-
<b>Total Distance (m)</b>				<b>3,630</b>

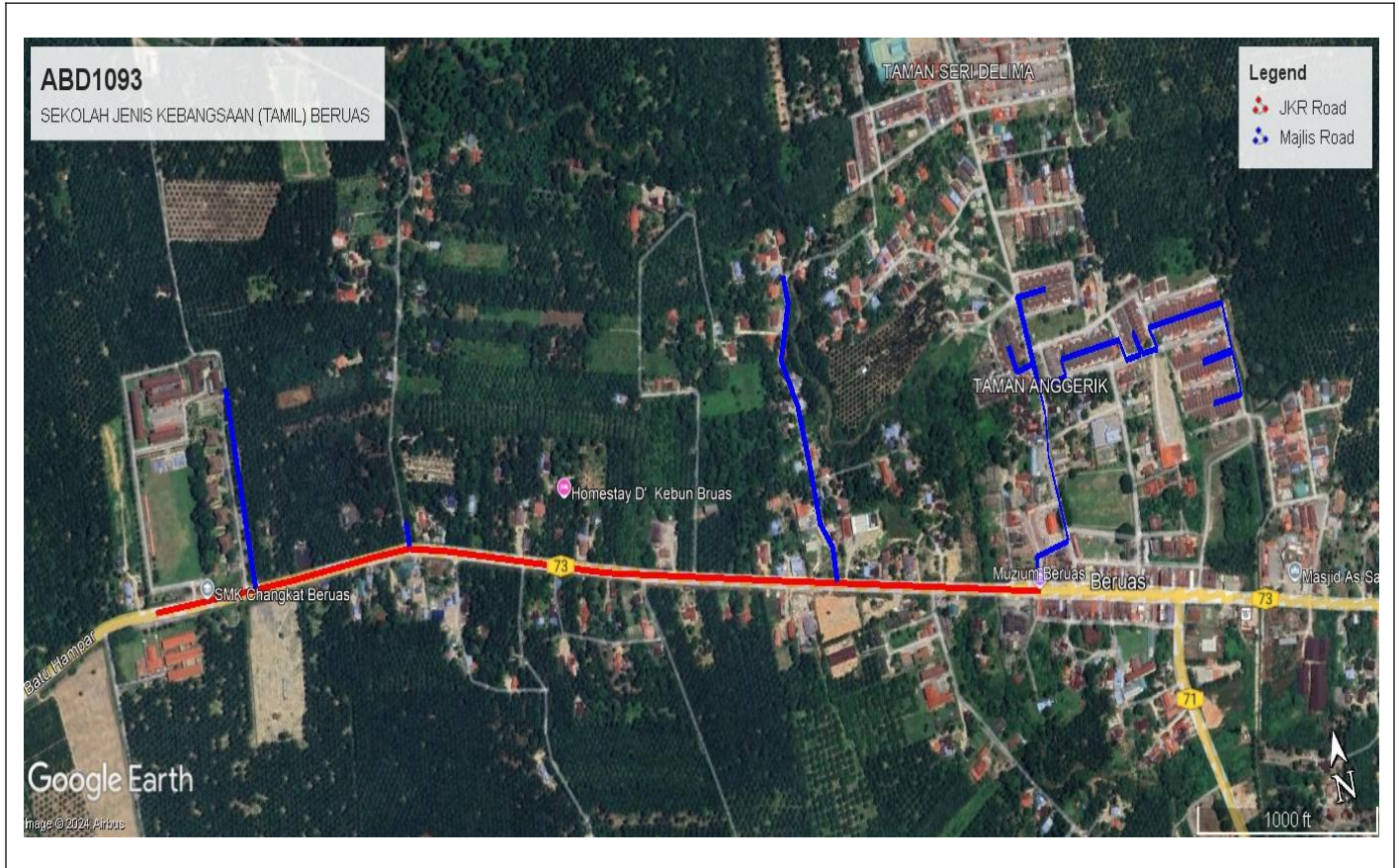
### 3.0 SITE PLAN (KMZ)

#### 3.1 Overview Site Area





### 3.2 Site Plan - KMZ Routing (All Local Authority)



**Red Colour - JKR Road**

**Blue Colour - Majlis Road**

#### 4.0 PROPOSED NEW POLE

Proposed New Pole Coordinate					
No.	Pole Number	Distance (m)	Latitude	Longitude	Local Authority
1	T000	50	4.503775	100.767089	JKR Daerah Manjung
2	T001	49	4.503752	100.767516	JKR Daerah Manjung
3	T002	36	4.503726	100.767952	JKR Daerah Manjung
4	T003	42	4.503710	100.768264	JKR Daerah Manjung
5	T004	40	4.503686	100.768618	JKR Daerah Manjung
6	T005	39	4.504028	100.768646	Majlis Perbandaran Manjung
7	T006	40	4.504356	100.768655	Majlis Perbandaran Manjung
8	T007	38	4.504699	100.768655	Majlis Perbandaran Manjung
9	T008	39	4.505032	100.768670	Majlis Perbandaran Manjung
10	T009	38	4.505374	100.768675	Majlis Perbandaran Manjung
11	T010	37	4.505716	100.768684	Majlis Perbandaran Manjung
12	T011	34	4.506043	100.768702	Majlis Perbandaran Manjung
13	T012	39	4.503647	100.768910	JKR Daerah Manjung
14	T013	45	4.503640	100.769246	JKR Daerah Manjung
15	T014	42	4.503637	100.769637	JKR Daerah Manjung
16	T015	40	4.503639	100.769987	JKR Daerah Manjung
17	T016	39	4.503633	100.770336	JKR Daerah Manjung
18	T017	44	4.503619	100.770673	JKR Daerah Manjung
19	T018	33	4.503602	100.771049	JKR Daerah Manjung
20	T019	30	4.503875	100.771075	Majlis Perbandaran Manjung
21	T020	40	4.503533	100.771300	JKR Daerah Manjung
22	T021	38	4.503445	100.771628	JKR Daerah Manjung
23	T022	41	4.503331	100.771950	JKR Daerah Manjung
24	T023	40	4.503233	100.772285	JKR Daerah Manjung
25	T024	39	4.503113	100.772618	JKR Daerah Manjung
26	T025	38	4.503011	100.772935	JKR Daerah Manjung
27	T026	43	4.502910	100.773265	JKR Daerah Manjung
28	T027	39	4.502788	100.773621	JKR Daerah Manjung
29	T028	38	4.502694	100.773946	JKR Daerah Manjung
30	T029	39	4.502592	100.774269	JKR Daerah Manjung
31	T030	46	4.502490	100.774608	JKR Daerah Manjung
32	T031	33	4.502378	100.774987	JKR Daerah Manjung
33	T032	42	4.502302	100.775259	JKR Daerah Manjung
34	T033	43	4.502210	100.775603	JKR Daerah Manjung
35	T034	41	4.502118	100.775971	JKR Daerah Manjung
36	T035	40	4.502018	100.776314	JKR Daerah Manjung
37	T036	44	4.501931	100.776648	JKR Daerah Manjung
38	T037	42	4.501828	100.777018	JKR Daerah Manjung
39	T038	40	4.501737	100.777368	JKR Daerah Manjung
40	T039	41	4.502074	100.777374	Majlis Perbandaran Manjung

Proposed New Pole Coordinate					
No.	Pole Number	Distance (m)	Latitude	Longitude	Local Authority
41	T040	42	4.502411	100.777231	Majlis Perbandaran Manjung
42	T041	41	4.502806	100.777266	Majlis Perbandaran Manjung
43	T042	36	4.503142	100.777230	Majlis Perbandaran Manjung
44	T043	38	4.503464	100.777209	Majlis Perbandaran Manjung
45	T044	40	4.503784	100.777199	Majlis Perbandaran Manjung
46	T045	41	4.504115	100.777179	Majlis Perbandaran Manjung
47	T046	41	4.504455	100.777098	Majlis Perbandaran Manjung
48	T047	39	4.504773	100.777220	Majlis Perbandaran Manjung
49	T048	36	4.505100	100.777333	Majlis Perbandaran Manjung
50	T049	38	4.505427	100.777294	Majlis Perbandaran Manjung
51	T050	41	4.501653	100.777682	JKR Daerah Manjung
52	T051	42	4.501568	100.778018	JKR Daerah Manjung
53	T052	38	4.501479	100.778363	JKR Daerah Manjung
54	T053	36	4.501397	100.778688	JKR Daerah Manjung
55	T054	38	4.501326	100.778991	JKR Daerah Manjung
56	T055	39	4.501257	100.779314	JKR Daerah Manjung
57	T056	39	4.501179	100.779640	JKR Daerah Manjung
58	T057	43	4.501101	100.779972	JKR Daerah Manjung
59	T058	37	4.501018	100.780332	JKR Daerah Manjung
60	T059	50	4.501349	100.780362	Majlis Perbandaran Manjung
61	T060	25	4.501409	100.780800	Majlis Perbandaran Manjung
62	T061	16	4.501646	100.780789	Majlis Perbandaran Manjung
63	T062	39	4.501671	100.780910	Majlis Perbandaran Manjung
64	T063	38	4.501989	100.780883	Majlis Perbandaran Manjung
65	T064	36	4.502313	100.780830	Majlis Perbandaran Manjung
66	T065	40	4.502599	100.780846	Majlis Perbandaran Manjung
67	T066	40	4.502988	100.780895	Majlis Perbandaran Manjung
68	T067	30	4.503346	100.780889	Majlis Perbandaran Manjung
69	T068	43	4.503622	100.780839	Majlis Perbandaran Manjung
70	T069	24	4.503358	100.781270	Majlis Perbandaran Manjung
71	T070	35	4.503537	100.781262	Majlis Perbandaran Manjung
72	T071	30	4.503549	100.781544	Majlis Perbandaran Manjung
73	T072	35	4.503557	100.781814	Majlis Perbandaran Manjung
74	T073	22	4.503565	100.782126	Majlis Perbandaran Manjung
75	T074	38	4.503372	100.782152	Majlis Perbandaran Manjung
76	T075	37	4.503348	100.782462	Majlis Perbandaran Manjung
77	T076	32	4.503651	100.782389	Majlis Perbandaran Manjung
78	T077	30	4.503360	100.782740	Majlis Perbandaran Manjung
79	T078	27	4.503603	100.782668	Majlis Perbandaran Manjung
80	T079	32	4.503616	100.783010	Majlis Perbandaran Manjung
81	T080	31	4.503628	100.783258	Majlis Perbandaran Manjung
82	T081	31	4.503636	100.783508	Majlis Perbandaran Manjung



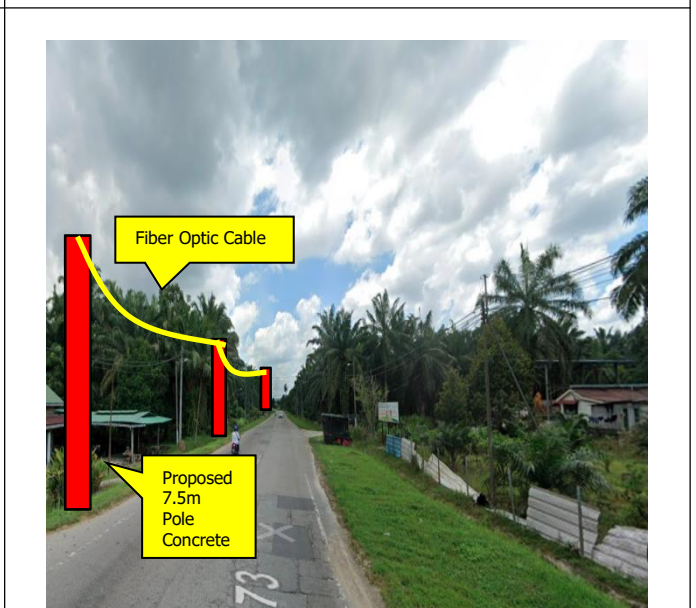
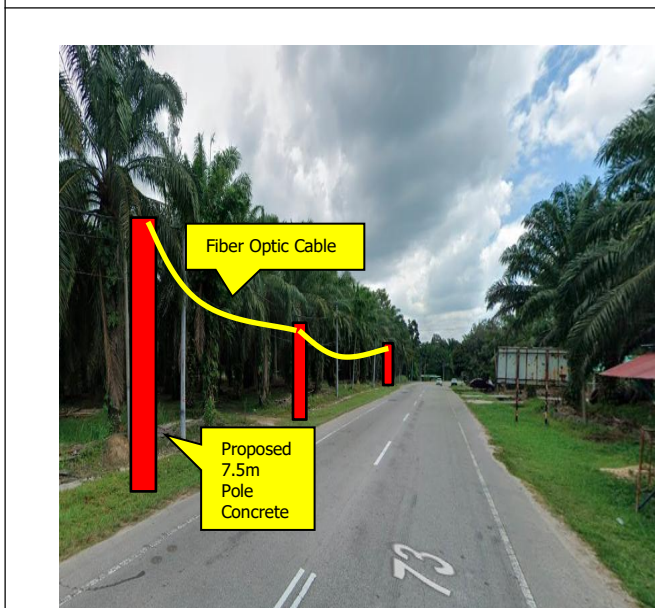
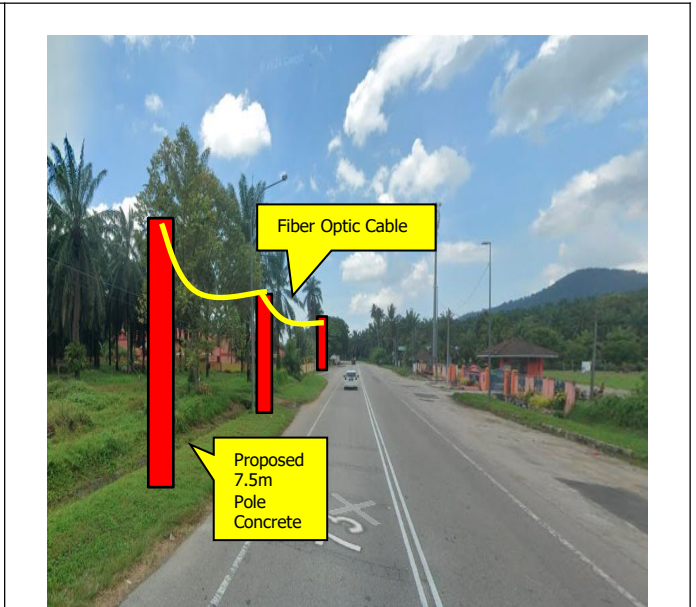
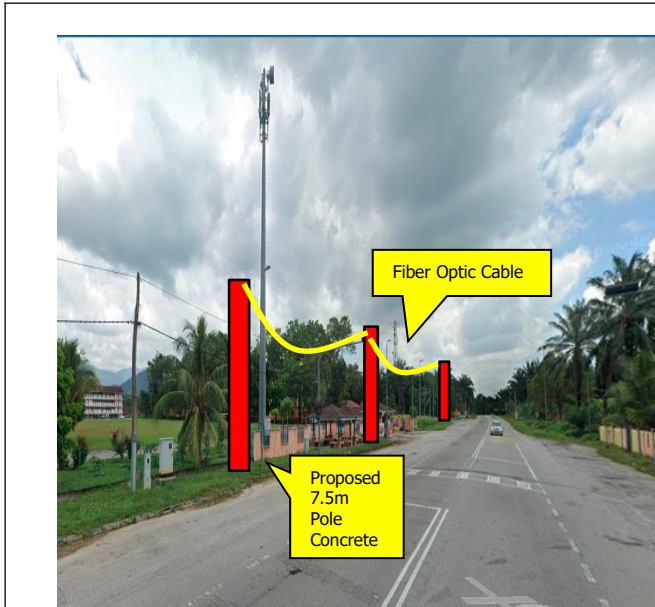
SUPPLY, INSTALLATION AND COMMISSIONING OF FTTX NETWORK INFRASTRUCTURE FOR ALLO TECHNOLOGY SDN BHD POP 2 PROJECT (D-SIDE) - PMU PRMS FOR ABD1093-SEKOLAH JENIS KEBANGSAAN (TAMIL) BERUAS

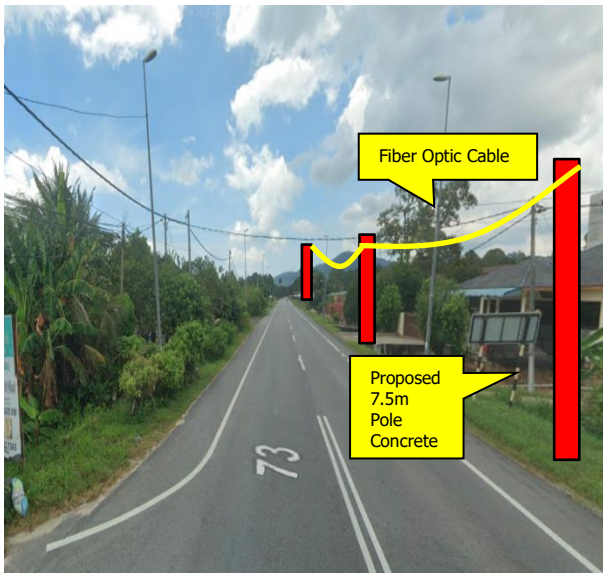
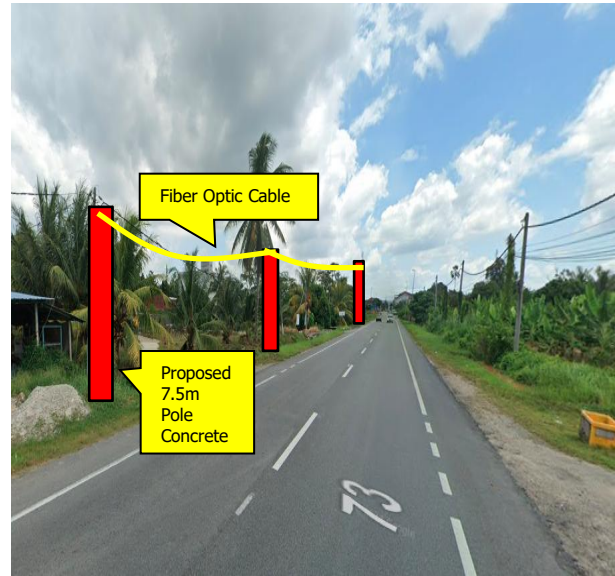
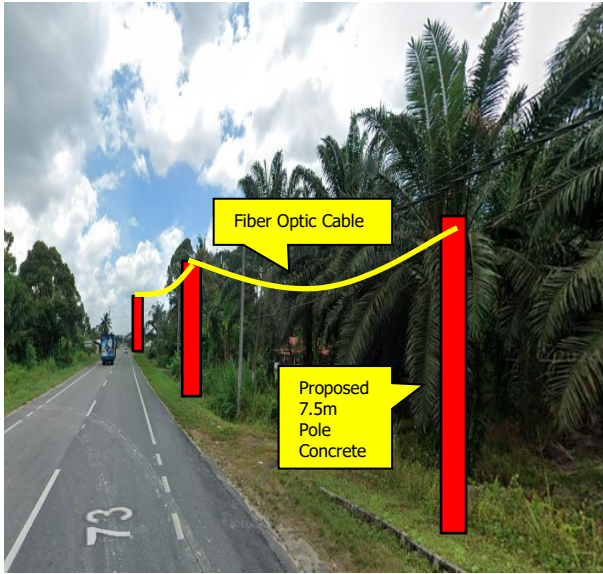


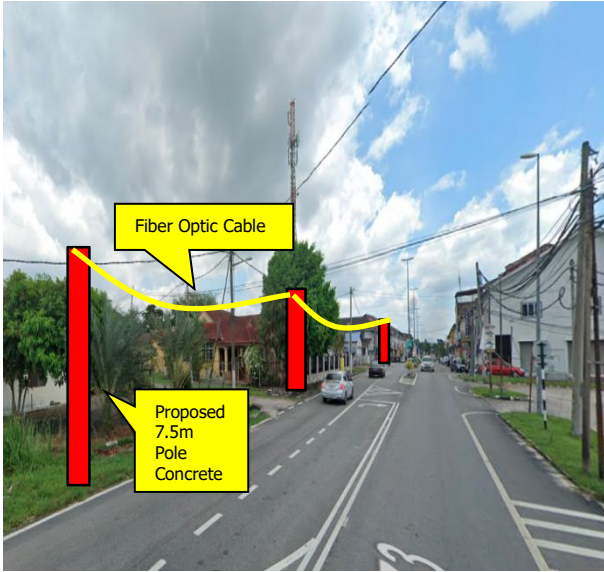
**Proposed New Pole Coordinate**

No.	Pole Number	Distance (m)	Latitude	Longitude	Local Authority
83	T082	30	4.503642	100.783804	Majlis Perbandaran Manjung
84	T083	34	4.503346	100.783819	Majlis Perbandaran Manjung
85	T084	26	4.503059	100.783833	Majlis Perbandaran Manjung
86	T085	30	4.503044	100.783591	Majlis Perbandaran Manjung
87	T086	30	4.503039	100.783328	Majlis Perbandaran Manjung
88	T087	31	4.502786	100.783848	Majlis Perbandaran Manjung
89	T088	29	4.502521	100.783852	Majlis Perbandaran Manjung
90	T089	27	4.502512	100.783615	Majlis Perbandaran Manjung
91	T090	31	4.502508	100.783375	Majlis Perbandaran Manjung
92	T091	36	4.503587	100.780561	Majlis Perbandaran Manjung
93	T092	31	4.503881	100.780511	Majlis Perbandaran Manjung
94	T093	30	4.503890	100.780815	Majlis Perbandaran Manjung
95	T094	29	4.504134	100.780812	Majlis Perbandaran Manjung
96	T095	23	4.504407	100.780788	Majlis Perbandaran Manjung
97	T096	26	4.504397	100.780995	Majlis Perbandaran Manjung
98	T097	30	4.504386	100.781209	Majlis Perbandaran Manjung

### 5.0 SITE PHOTOS - PROPOSED NEW POLE









SUPPLY, INSTALLATION AND COMMISSIONING OF FTTX NETWORK INFRASTRUCTURE FOR ALLO TECHNOLOGY SDN BHD POP 2 PROJECT (D-SIDE) - PMU PRMS FOR ABD1093-SEKOLAH JENIS KEBANGSAAN (TAMIL) BERUAS



## 6.0 3<sup>rd</sup> PARTIES DEPENDENCIES

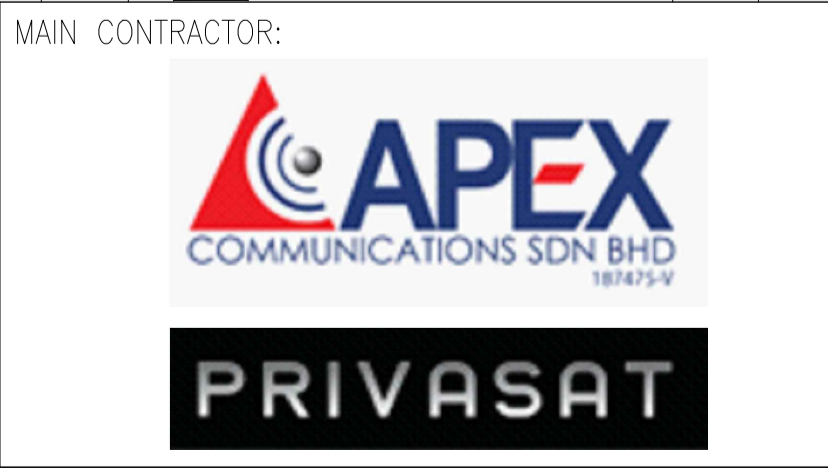
NO	LOCAL COUNCIL / AUTHORITY	REMARK
1	Majlis Perbandaran Manjung	2,030m
2	JKR Daerah Manjung	1,600m



	12C FOC	Installed 1:4 / 1:8 / 1:32 splitter		Installed Pole (9m)	3		Suspension	100		New Manhole (PIT)		Micro-Trenching (Meter)		MH NO.	
	24C FOC	3775m Installed Patch Cord		Installed Pole (7.5M)	95		Tension	150		New Manhole(JRC7)		Temporary Infra (Meter)		Existing TNB Pole NO.	
	48C FOC		1		Installed Pole (6.7M)		Pole Ring	16		FDP Boundary		Loop / Coil (Meter)		New Pole NO.	
	96C FOC		3		Existing TNB Pole		FDP with (1:8) splitter	16		HDD (Meter)		#	Active Outdoor Cabinet		Closure NO.
	144C FOC				Installed Riser		Existing Manhole			Open Cut (Meter)		C01	FDC NO.		FDP NO.

ACTUAL HOMEPASS : 120

KEY PLAN:

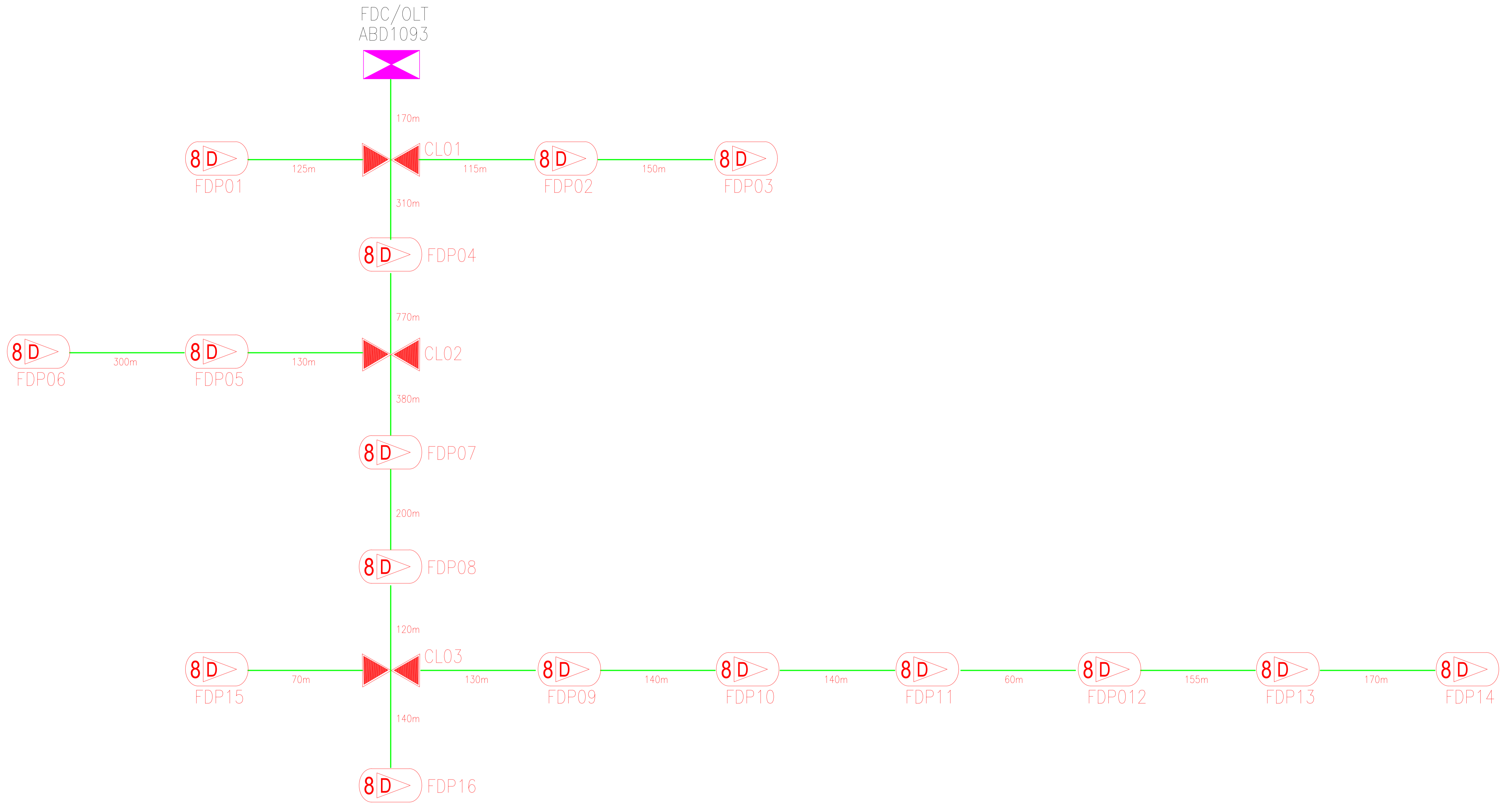


**allo!**  
 The Smarter Connection  
 ALLO TECHNOLOGY SDN BHD  
 Level 3, Left Wing,  
 College of Computer Science & Information Technology (CSIT)  
 UNITEN, 43000 Kajang, Selangor  
 TEL: 1 300-38-8000  
 FAX: (60) 3 8900 5221  
 E-MAIL : info@allo.my WEBSITE: HTTP://WWW.ALLO.MY

PROJECT TITLE:  
**ABD1093  
 SEKOLAH JENIS  
 KEBANGSAAN (TAMIL)  
 BERUAS**

DRAWING TITLE:  
 CONSTRUCTION DRAWING  
 ABD1093  
 SEKOLAH JENIS KEBANGSAAN (TAMIL)  
 BERUAS  
 PROJECT PHASE:  
 POP 2

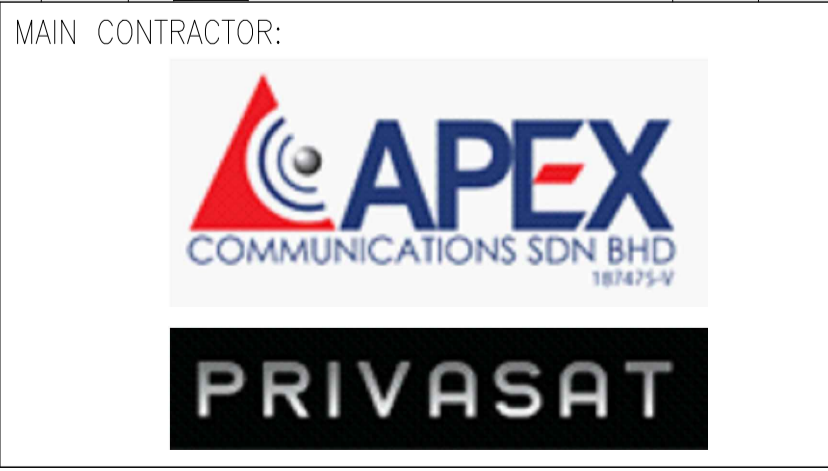
Design By : NADHIRAH	Date : 25/07/2024
Drawn By : NADHIRAH	Scale : NOT TO SCALE
Checked By : SHAHRIL	Job Number :
DRAWING NUMBER : ABD-1093-CD-01	Sheet : 1/1
THIS PRINT AND ITS COPYRIGHT ARE THE PROPERTY OF ALLO TECHNOLOGY SDN BHD	
Size : A3	



12C FOC	Installed 1:4 / 1:8 / 1:32 splitter	○	Installed Pole (9m)	3	s	Suspension	100	JB30	New Manhole (PIT)	Micro-Trenching (Meter)	MH1	MH NO.	
24C FOC	3775m Installed Patch Cord	●	Installed Pole (7.5M)	95	t	Tension	150	C7	New Manhole(JRC7)	Temporary Infra (Meter)	TKS-1	Existing TNB Pole NO.	
48C FOC	1	⊠	Installed Pole (6.7M)		⊙	Pole Ring	16		FDP Boundary	Loop / Coil (Meter)	P001	New Pole NO.	
96C FOC	3	◀▶	Existing TNB Pole		8D>	FDP with (1:8) splitter	16		HDD (Meter)	#	Active Outdoor Cabinet	CL01	Closure NO.
144C FOC	Existing Closure	◻	Installed Riser		◻	Existing Manhole			Open Cut (Meter)	C01	FDC NO.	DP1	FDP NO.

ACTUAL HOMEPASS : 120

KEY PLAN:



PROJECT TITLE:

**ABD1093  
SEKOLAH JENIS  
KEBANGSAAN (TAMIL)  
BERUAS**

DRAWING TITLE:

SINGLE LINE DIAGRAM  
ABD1093  
SEKOLAH JENIS KEBANGSAAN (TAMIL)  
BERUAS

PROJECT PHASE:  
POP 2

Design By : NADHIRAH	Date : 25/07/2024
Drawn By : NADHIRAH	Scale : NOT TO SCALE
Checked By : SHAHRIL	Job Number :
DRAWING NUMBER : ABD-1093-SLD-01	Sheet : 1/1
THIS PRINT AND ITS COPYRIGHT ARE THE PROPERTY OF ALLO TECHNOLOGY SDN BHD	
Size : A3	