

# Technical Proposal for TM Project



<b>Project Description:</b>	RWO GPRA SRF A3A072505842_JLN BALING-GERIK-JELI (JRTB)
<b>Project Number:</b>	A3A072505842
<b>TM Node</b>	GK
<b>Region</b>	NORTHERN
<b>SITE ID</b>	
<b>RFSI Date</b>	30/5/2026
<b>GPS Coordinate</b>	
<b>Main Fiber Info</b>	
<b>Required Permit OSA</b>	Yes
<b>Landowner permit/issue</b>	No
<b>Required IW</b>	No
<b>Floor Involved for IW</b>	

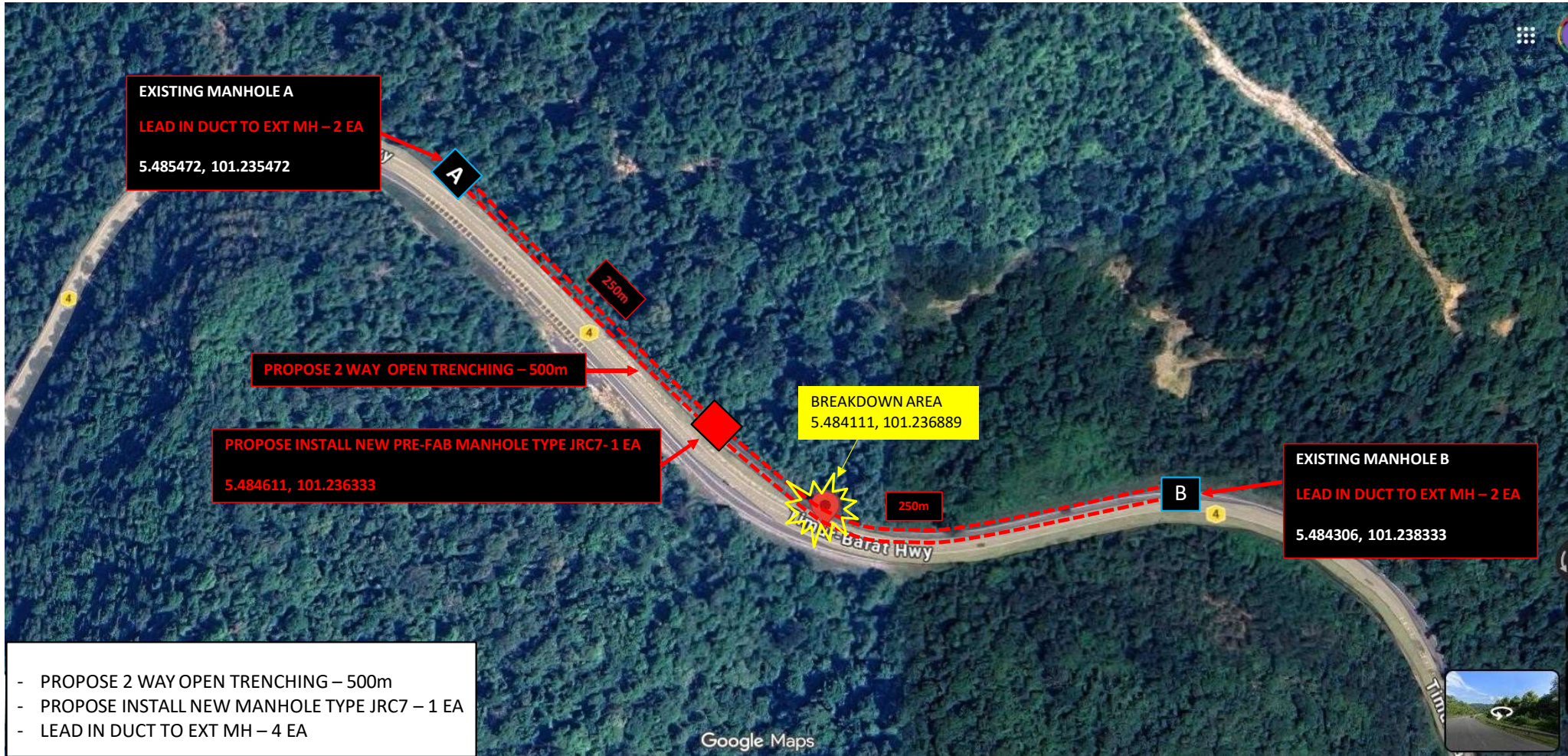
<b>Prepared by:</b>	MUHD ALIF JAZLI BIN JOHARI
<b>Company Name:</b>	PROSERINS TECHNOLOGY SDN. BHD
<b>Date:</b>	25/5/2026
<b>TP Revision:</b>	1

## 2.1 Detail Fiber Route to the site



Legend: ● New Joint    ■ Existing MH    ■ New MH Type JRC7

### 3.4 NEW CIVIL



Legend: ● New Joint    ■ Existing MH    ■ New MH Type JRC7

### 3.5 New Civil details

No	PU ID	PU Desc	GPS Coordinate
1	908138	S/I 2 WAY OPEN TRENCHING (ORI MAX)	<b>START POINT</b> -5.485472, 101.235472 <b>END POINT</b> - 5.484306, 101.238333
2	108392	INSTALL MANHOLE PRE-FAB JRC7	5.484611, 101.236333
3			
4			
5			
6			
7			
8			
9			
10			

### 3.3 New Civil Illustration -2 WAY OPEN TRENCHING



### 3.3 New Civil Illustration –2 WAY OPEN TRENCHING



### 3.3

## New Civil Illustration – INSTALL NEW PRE-FAB MANHOLE JRC7



## PHOTOS ON-SITE – KEDUDUKAN EXISTING MANHOLE A



LAT/LONG : 5.485472, 101.235472



MANHOLE BERDEKATAN DENGAN TIANG TNB NO 149

## PHOTOS ON-SITE – KEDUDUKAN EXISTING MANHOLE B



LAT/LONG : 5.484306, 101.238333



MANHOLE BERDEKATAN DENGAN TIANG TNB NO 159

**END OF TECHNICAL PROPOSAL**