

## TECHNICAL PROPOSAL

### POP2 AFT0001 SEKOLAH MENENGAH AGAMA DAERAH BATANG PADANG (D-SIDE)

<b>Company Name</b>	:	<b>STEADCOM SDN BHD</b>
<b>Company Address</b>	:	<b>11-3, Jalan Puteri 2/6, Bandar Puteri, 47100 Puchong, Selangor</b>
<b>Prepared By</b>	:	<b>Fariz Aizat</b>
<b>Date</b>	:	<b>2/12/2024</b>



**POINT A**

**POINT B**

**Starting Point**

Site / Boundary Name	:	SEKOLAH MENENGAH AGAMA DAERAH BATANG PADANG
Address	:	Jalan Tapah (1), 35500 Bidor, Perak.
District	:	Bidor
Postcode	:	35500
State	:	Perak
GPS Coordinate	:	4.143330, 101.279137
LRD	:	A

**End Point**

Site / Boundary Name	:	SEKOLAH MENENGAH AGAMA DAERAH BATANG PADANG
Address	:	Jalan 13, Taman Seri Bidor, 35500 Bidor, Perak.
District	:	Bidor
Postcode	:	35500
State	:	Perak
GPS Coordinate	:	4.136465, 101.278433
LRD	:	B

### Work Summary

No	Proposed Distance and Method	Unit	Qty
1	Horizontal Directional Drilling (HDD)	m	0
2	Carriage Way Open trench (CW)	m	0
3	Grass Verge Open Trenching (GV)	m	0
4	Micro trenching (MT)	m	0
	Total		0

	Other Information	Unit	Qty
1	Proposed Manhole	EA	0
2	Proposed Pole	EA	138
3	Joint Closure	EA	4
4	Estimated time required for completion	days	30

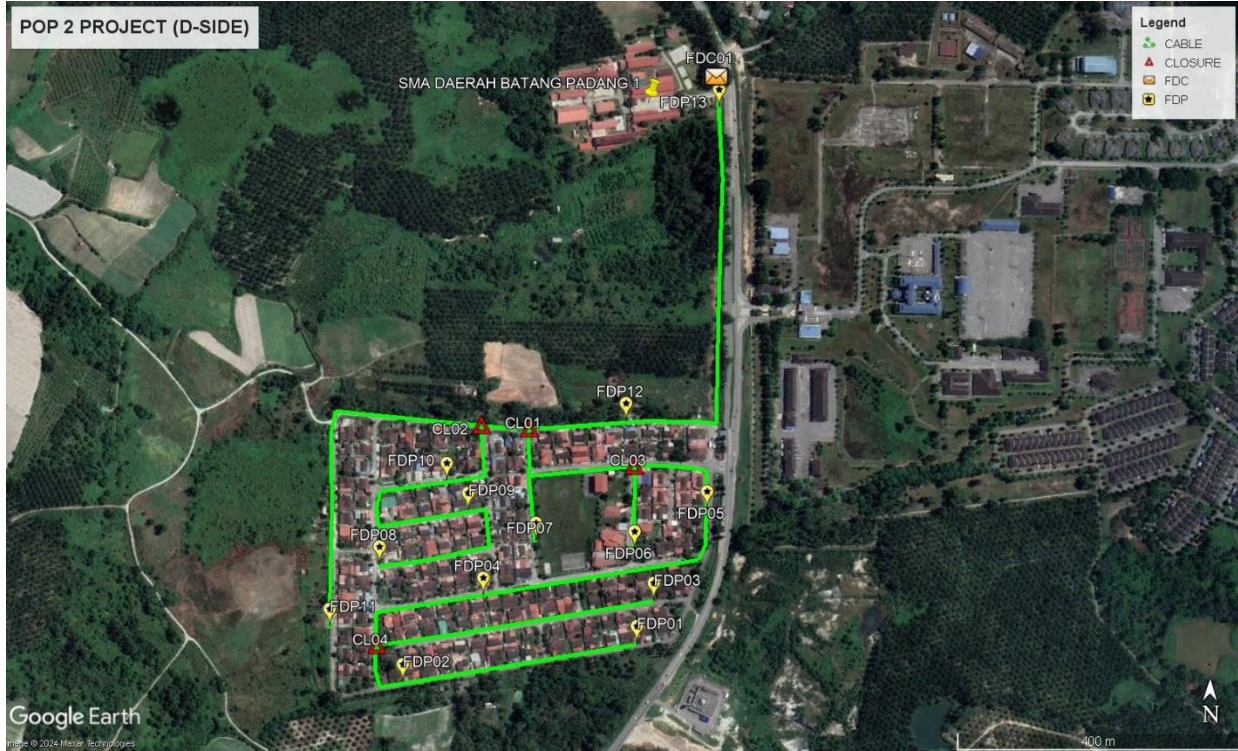
### Local Authority Summary

1. Daerah Tapah

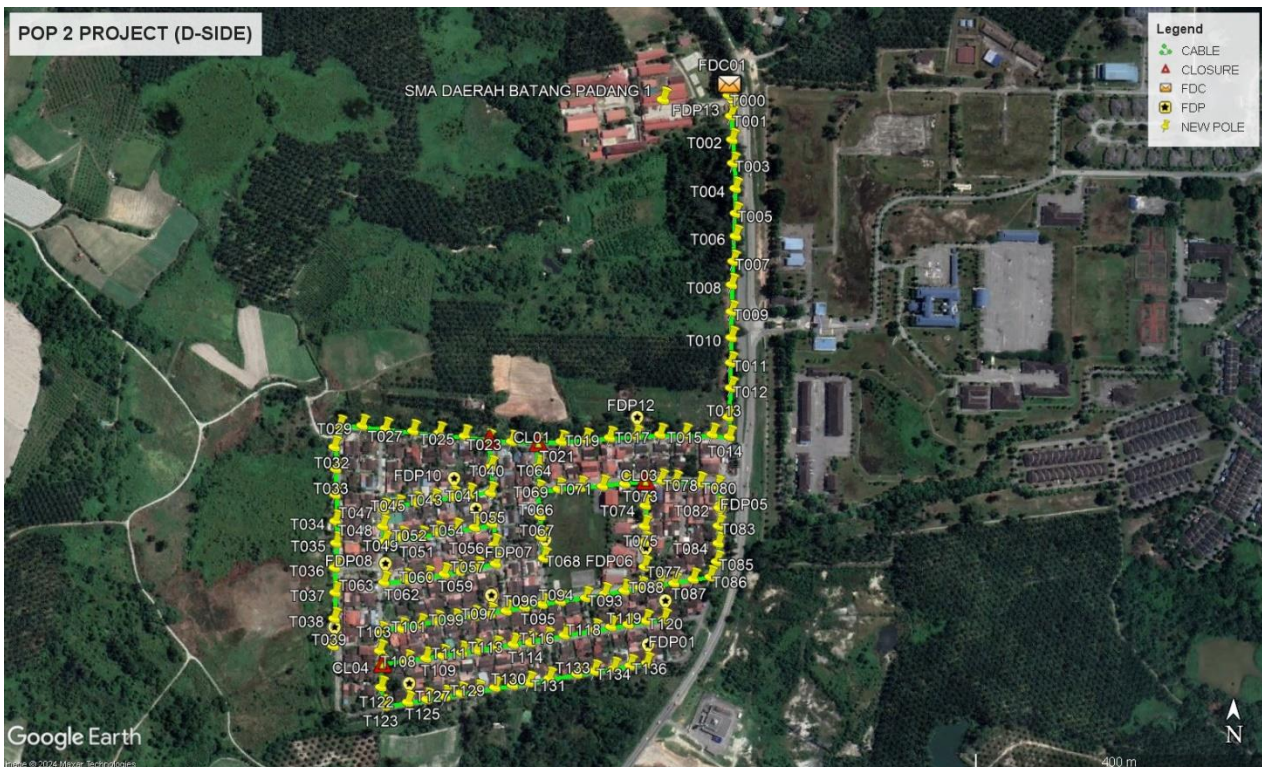
Bil	Items	Owner	Quantity	Distance(m)
1	HDD	JKR	-	-
		Majlis	-	-
		Estate / Private Land	-	-
2	New Pole	JKR	14PCS	450m
		Majlis	124PCS	3605m
		Estate / Private Land	-	-
3	Existing TNB Pole	JKR	-	-
		Majlis	-	-
		Estate / Private Land	-	-
Total				4055m

**Site Plan – KMZ (Overview site area)**

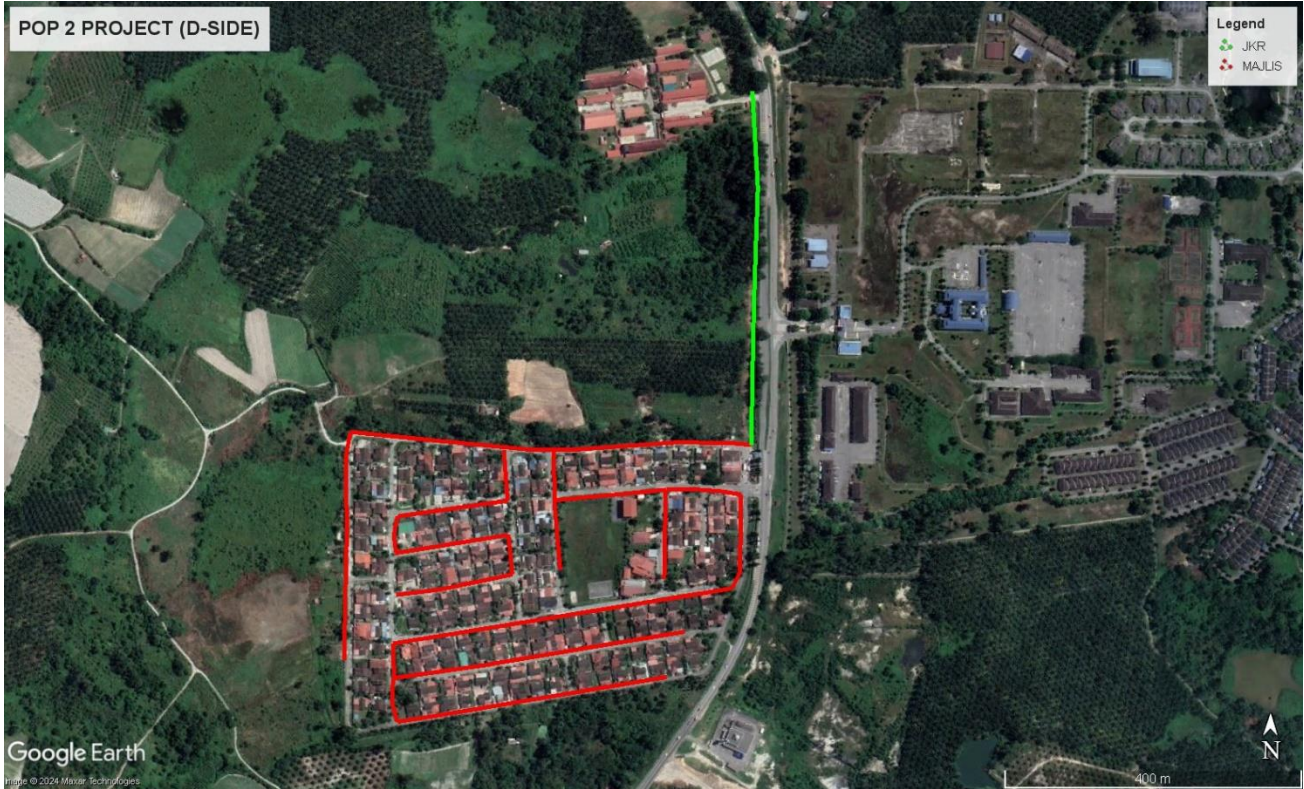
**Proposed FDP and Closure**



**Proposed New Pole**



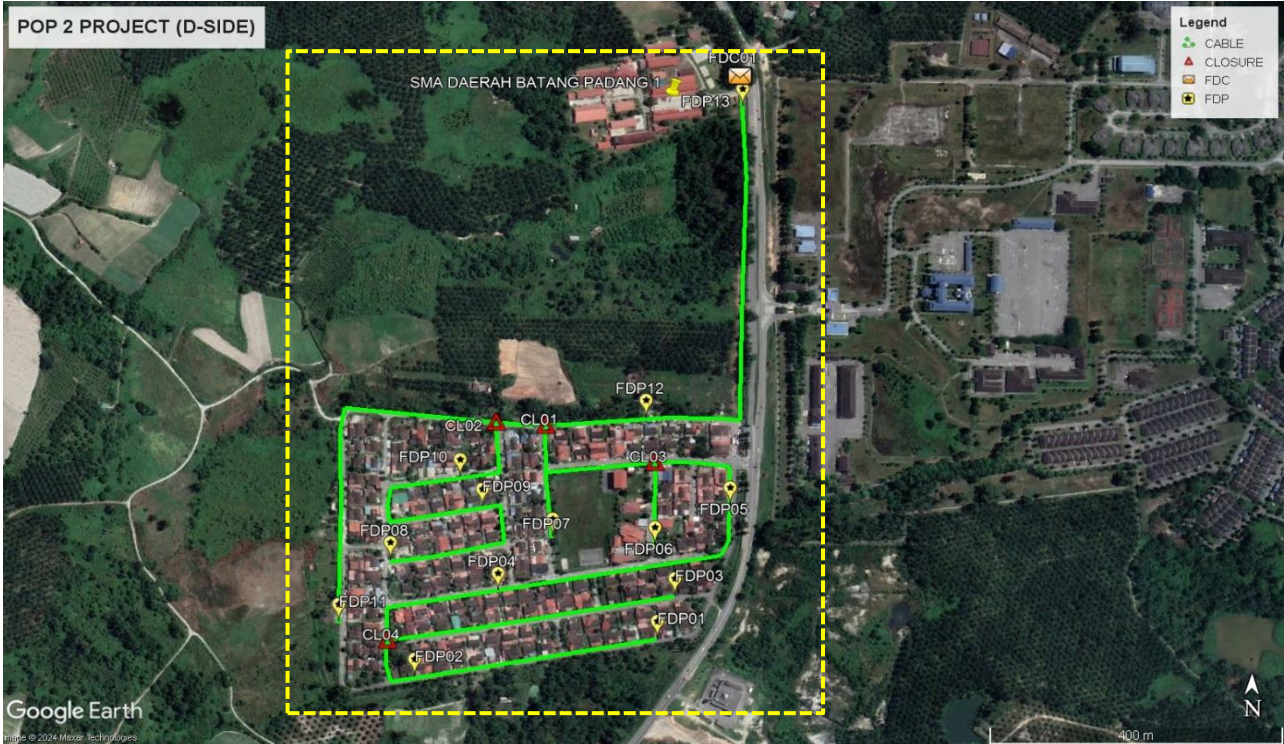
**Site Plan – KMZ Routing (All Local Authority)**



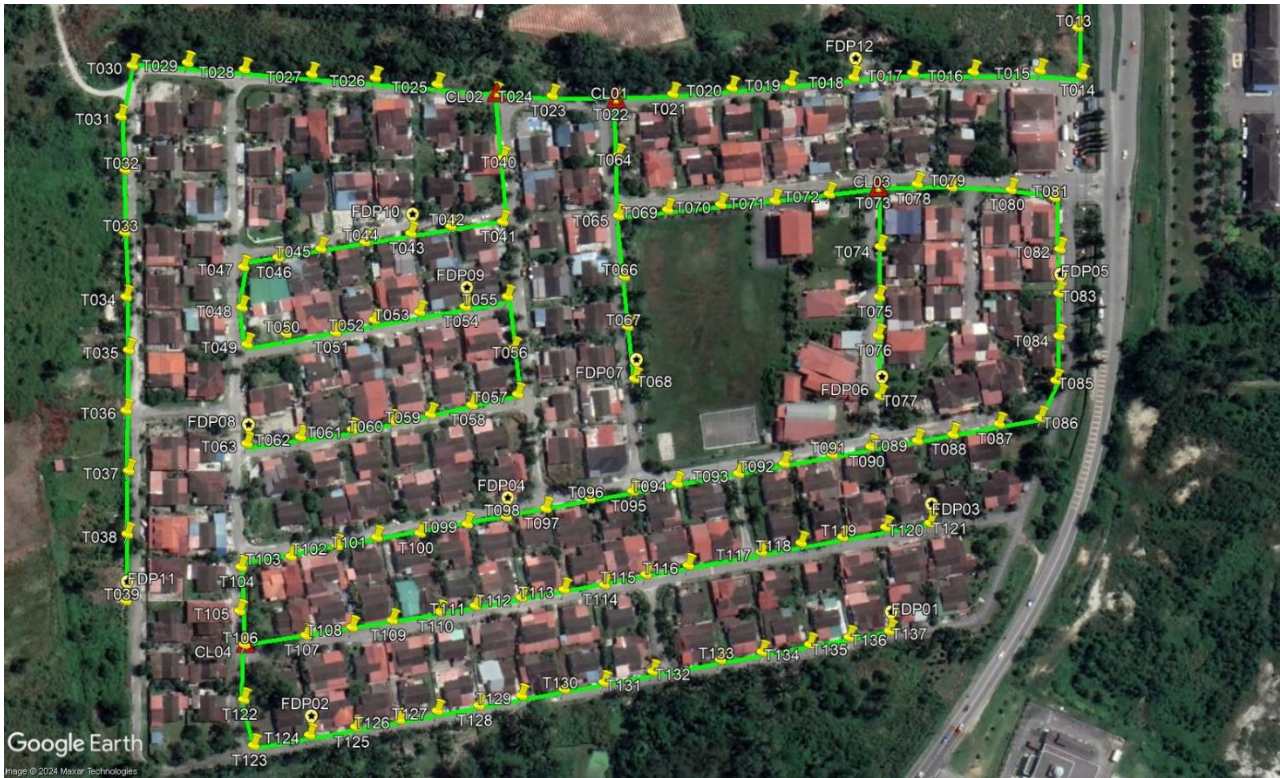
**Green Colour – JKR Batang Padang**  
**Red Colour – Majlis Daerah Tapah**

Site Plan – KMZ Routing (All site area)

Route 1

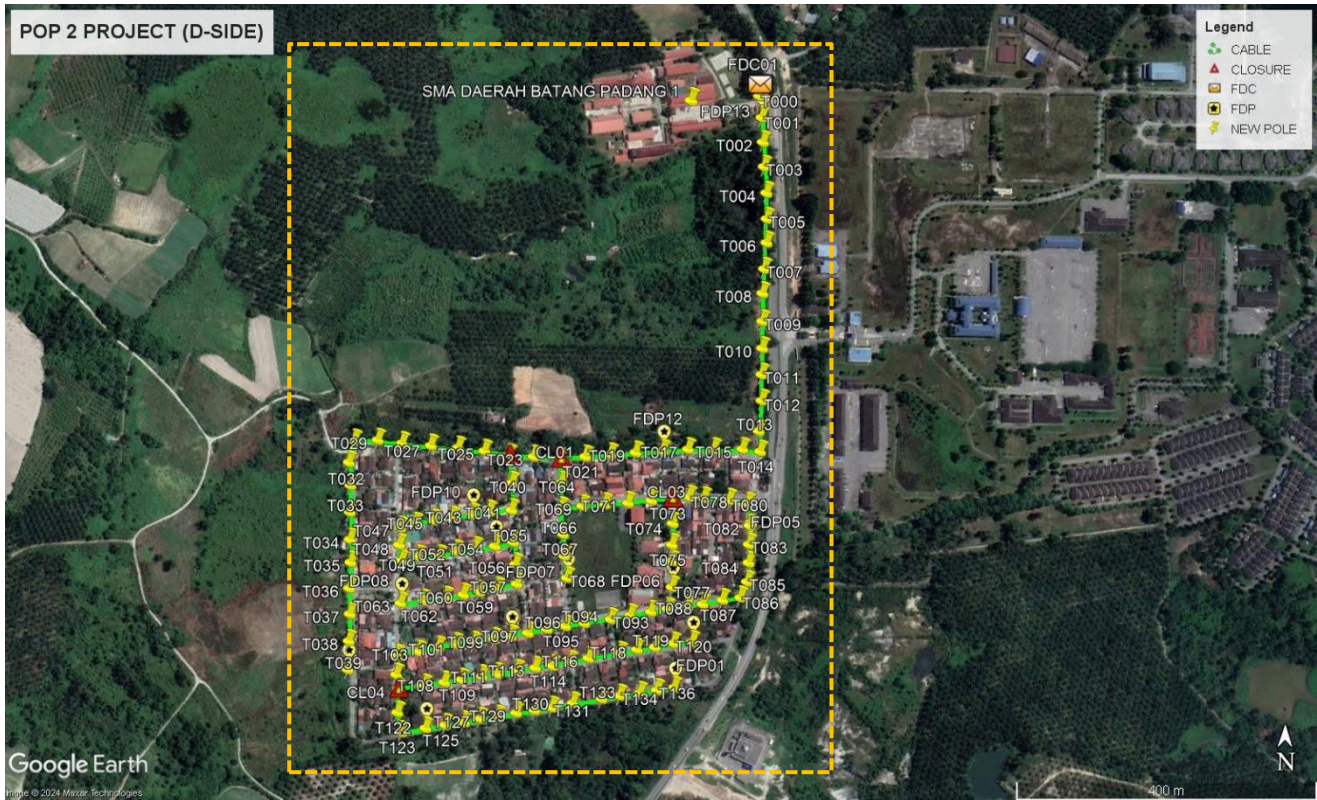


Route 1.1



**Route 1.2**

Site Plan – KMZ Routing (Proposed new Pole)



**Proposed New Pole Lat & Long Table**

No.	Label	Pole & Manhole ID	Latitude	Longitude	Local Authority
1	OLT / FDC	T000	4.143485	101.27911	JKR BATANG PADANG
2	FDP01	T137	4.136431	101.2782	MAJLIS DAERAH TAPAH
3	FDP02	T124	4.135901	101.275231	MAJLIS DAERAH TAPAH
4	FDP03	T121	4.136981	101.278407	MAJLIS DAERAH TAPAH
5	FDP04	T098	4.137014	101.276237	MAJLIS DAERAH TAPAH
6	FDP05	T083	4.138154	101.279068	MAJLIS DAERAH TAPAH
7	FDP06	T077	4.137631	101.278153	MAJLIS DAERAH TAPAH
8	FDP07	T068	4.137719	101.276896	MAJLIS DAERAH TAPAH
9	FDP08	T063	4.137388	101.27491	MAJLIS DAERAH TAPAH
10	FDP09	T054	4.138087	101.276028	MAJLIS DAERAH TAPAH
11	FDP10	T043	4.138461	101.27575	MAJLIS DAERAH TAPAH
12	FDP11	T039	4.136587	101.274289	MAJLIS DAERAH TAPAH
13	FDP12	T018	4.139255	101.278019	MAJLIS DAERAH TAPAH
14	FDP13	T001	4.143252	101.27914	JKR BATANG PADANG
15	CL01	T022	4.139142	101.276794	MAJLIS DAERAH TAPAH
16	CL02	T024	4.139174	101.276183	MAJLIS DAERAH TAPAH
17	CL03	T073	4.13869	101.278137	MAJLIS DAERAH TAPAH
18	CL04	T106	4.136364	101.274896	MAJLIS DAERAH TAPAH

**Overall Pole (Proposed New)**

No.	Pole & Manhole ID	Distance	Latitude	Longitude	Local Authority
1	T000	0	4.143485	101.27911	JKR BATANG PADANG
2	T001	30	4.143252	101.27914	JKR BATANG PADANG
3	T002	35	4.142958	101.279161	JKR BATANG PADANG
4	T003	35	4.142666	101.279177	JKR BATANG PADANG
5	T004	35	4.142353	101.279212	JKR BATANG PADANG
6	T005	35	4.142043	101.27922	JKR BATANG PADANG
7	T006	35	4.141759	101.279223	JKR BATANG PADANG
8	T007	35	4.141446	101.279199	JKR BATANG PADANG
9	T008	35	4.141155	101.279183	JKR BATANG PADANG
10	T009	35	4.14082	101.279188	JKR BATANG PADANG
11	T010	35	4.140499	101.279191	JKR BATANG PADANG
12	T011	35	4.140184	101.279188	JKR BATANG PADANG
13	T012	35	4.139873	101.279193	JKR BATANG PADANG
14	T013	35	4.13951	101.279164	JKR BATANG PADANG
15	T014	35	4.139247	101.279183	MAJLIS DAERAH TAPAH
16	T015	25	4.139264	101.27896	MAJLIS DAERAH TAPAH
17	T016	35	4.139284	101.27863	MAJLIS DAERAH TAPAH
18	T017	35	4.139279	101.278321	MAJLIS DAERAH TAPAH
19	T018	35	4.139255	101.278019	MAJLIS DAERAH TAPAH
20	T019	35	4.13923	101.277694	MAJLIS DAERAH TAPAH
21	T020	35	4.139203	101.277394	MAJLIS DAERAH TAPAH
22	T021	35	4.139171	101.277092	MAJLIS DAERAH TAPAH
23	T022	35	4.139142	101.276794	MAJLIS DAERAH TAPAH
24	T023	35	4.139149	101.27647	MAJLIS DAERAH TAPAH
25	T024	35	4.139174	101.276183	MAJLIS DAERAH TAPAH
26	T025	35	4.139203	101.275893	MAJLIS DAERAH TAPAH
27	T026	35	4.139235	101.275566	MAJLIS DAERAH TAPAH
28	T027	35	4.139246	101.275234	MAJLIS DAERAH TAPAH
29	T028	35	4.139275	101.274896	MAJLIS DAERAH TAPAH
30	T029	35	4.139302	101.274601	MAJLIS DAERAH TAPAH
31	T030	35	4.139318	101.274324	MAJLIS DAERAH TAPAH
32	T031	30	4.139059	101.274265	MAJLIS DAERAH TAPAH
33	T032	35	4.138786	101.274287	MAJLIS DAERAH TAPAH
34	T033	35	4.138467	101.274284	MAJLIS DAERAH TAPAH
35	T034	35	4.138138	101.274292	MAJLIS DAERAH TAPAH
36	T035	35	4.137866	101.274305	MAJLIS DAERAH TAPAH
37	T036	35	4.137558	101.274292	MAJLIS DAERAH TAPAH
38	T037	35	4.13725	101.274305	MAJLIS DAERAH TAPAH
39	T038	35	4.136927	101.274297	MAJLIS DAERAH TAPAH
40	T039	35	4.136587	101.274289	MAJLIS DAERAH TAPAH
41	T040	40	4.138844	101.27622	MAJLIS DAERAH TAPAH

42	T041	35	4.13852	101.27622	MAJLIS DAERAH TAPAH
43	T042	30	4.138498	101.275954	MAJLIS DAERAH TAPAH
44	T043	25	4.138461	101.27575	MAJLIS DAERAH TAPAH
45	T044	25	4.138418	101.275514	MAJLIS DAERAH TAPAH
46	T045	25	4.138383	101.275289	MAJLIS DAERAH TAPAH
47	T046	25	4.138338	101.275069	MAJLIS DAERAH TAPAH
48	T047	25	4.13829	101.274892	MAJLIS DAERAH TAPAH
49	T048	25	4.138084	101.274884	MAJLIS DAERAH TAPAH
50	T049	25	4.137894	101.274911	MAJLIS DAERAH TAPAH
51	T050	30	4.13795	101.275111	MAJLIS DAERAH TAPAH
52	T051	25	4.137955	101.275364	MAJLIS DAERAH TAPAH
53	T052	25	4.138019	101.275562	MAJLIS DAERAH TAPAH
54	T053	25	4.13806	101.275794	MAJLIS DAERAH TAPAH
55	T054	25	4.138087	101.276028	MAJLIS DAERAH TAPAH
56	T055	25	4.138138	101.276245	MAJLIS DAERAH TAPAH
57	T056	30	4.137873	101.276277	MAJLIS DAERAH TAPAH
58	T057	30	4.137639	101.276297	MAJLIS DAERAH TAPAH
59	T058	25	4.137585	101.276062	MAJLIS DAERAH TAPAH
60	T059	25	4.137537	101.27585	MAJLIS DAERAH TAPAH
61	T060	25	4.137502	101.275659	MAJLIS DAERAH TAPAH
62	T061	25	4.13746	101.27545	MAJLIS DAERAH TAPAH
63	T062	30	4.137422	101.275184	MAJLIS DAERAH TAPAH
64	T063	30	4.137388	101.27491	MAJLIS DAERAH TAPAH
65	T064	35	4.138856	101.276747	MAJLIS DAERAH TAPAH
66	T065	35	4.138541	101.276856	MAJLIS DAERAH TAPAH
67	T066	35	4.138241	101.276842	MAJLIS DAERAH TAPAH
68	T067	30	4.137985	101.276859	MAJLIS DAERAH TAPAH
69	T068	30	4.137719	101.276896	MAJLIS DAERAH TAPAH
70	T069	30	4.138581	101.277065	MAJLIS DAERAH TAPAH
71	T070	30	4.138607	101.277337	MAJLIS DAERAH TAPAH
72	T071	30	4.138627	101.277614	MAJLIS DAERAH TAPAH
73	T072	30	4.138661	101.277892	MAJLIS DAERAH TAPAH
74	T073	30	4.13869	101.278137	MAJLIS DAERAH TAPAH
75	T074	35	4.138387	101.278128	MAJLIS DAERAH TAPAH
76	T075	25	4.138136	101.278147	MAJLIS DAERAH TAPAH
77	T076	25	4.137938	101.278142	MAJLIS DAERAH TAPAH
78	T077	35	4.137631	101.278153	MAJLIS DAERAH TAPAH
79	T078	25	4.138711	101.278343	MAJLIS DAERAH TAPAH
80	T079	25	4.138696	101.278519	MAJLIS DAERAH TAPAH
81	T080	35	4.138682	101.278823	MAJLIS DAERAH TAPAH
82	T081	25	4.138641	101.279046	MAJLIS DAERAH TAPAH
83	T082	30	4.138379	101.279073	MAJLIS DAERAH TAPAH
84	T083	25	4.138154	101.279068	MAJLIS DAERAH TAPAH
85	T084	25	4.137936	101.279068	MAJLIS DAERAH TAPAH
86	T085	25	4.137709	101.279053	MAJLIS DAERAH TAPAH

87	T086	25	4.137518	101.278974	MAJLIS DAERAH TAPAH
88	T087	25	4.137487	101.278762	MAJLIS DAERAH TAPAH
89	T088	25	4.137433	101.278525	MAJLIS DAERAH TAPAH
90	T089	25	4.137402	101.278343	MAJLIS DAERAH TAPAH
91	T090	25	4.137371	101.278105	MAJLIS DAERAH TAPAH
92	T091	25	4.137332	101.277907	MAJLIS DAERAH TAPAH
93	T092	25	4.137286	101.277661	MAJLIS DAERAH TAPAH
94	T093	30	4.137235	101.277427	MAJLIS DAERAH TAPAH
95	T094	40	4.137185	101.277112	MAJLIS DAERAH TAPAH
96	T095	25	4.137145	101.276885	MAJLIS DAERAH TAPAH
97	T096	25	4.137106	101.276666	MAJLIS DAERAH TAPAH
98	T097	25	4.137056	101.27644	MAJLIS DAERAH TAPAH
99	T098	25	4.137014	101.276237	MAJLIS DAERAH TAPAH
100	T099	25	4.136977	101.276037	MAJLIS DAERAH TAPAH
101	T100	25	4.136931	101.275796	MAJLIS DAERAH TAPAH
102	T101	25	4.13691	101.275574	MAJLIS DAERAH TAPAH
103	T102	25	4.136866	101.275371	MAJLIS DAERAH TAPAH
104	T103	25	4.136813	101.275135	MAJLIS DAERAH TAPAH
105	T104	30	4.136759	101.274879	MAJLIS DAERAH TAPAH
106	T105	25	4.136534	101.274872	MAJLIS DAERAH TAPAH
107	T106	25	4.136364	101.274896	MAJLIS DAERAH TAPAH
108	T107	40	4.13641	101.275212	MAJLIS DAERAH TAPAH
109	T108	25	4.136451	101.275448	MAJLIS DAERAH TAPAH
110	T109	25	4.136486	101.275654	MAJLIS DAERAH TAPAH
111	T110	25	4.13653	101.275897	MAJLIS DAERAH TAPAH
112	T111	25	4.13656	101.276079	MAJLIS DAERAH TAPAH
113	T112	25	4.136602	101.276315	MAJLIS DAERAH TAPAH
114	T113	25	4.136643	101.276534	MAJLIS DAERAH TAPAH
115	T114	25	4.136667	101.27674	MAJLIS DAERAH TAPAH
116	T115	25	4.13672	101.276953	MAJLIS DAERAH TAPAH
117	T116	25	4.136766	101.27717	MAJLIS DAERAH TAPAH
118	T117	40	4.136845	101.277507	MAJLIS DAERAH TAPAH
119	T118	30	4.13688	101.277748	MAJLIS DAERAH TAPAH
120	T119	25	4.13691	101.27796	MAJLIS DAERAH TAPAH
121	T120	25	4.13696	101.278182	MAJLIS DAERAH TAPAH
122	T121	25	4.136981	101.278407	MAJLIS DAERAH TAPAH
123	T122	35	4.136083	101.274893	MAJLIS DAERAH TAPAH
124	T123	30	4.135848	101.274944	MAJLIS DAERAH TAPAH
125	T124	35	4.135901	101.275231	MAJLIS DAERAH TAPAH
126	T125	25	4.135942	101.275467	MAJLIS DAERAH TAPAH
127	T126	25	4.135979	101.275692	MAJLIS DAERAH TAPAH
128	T127	25	4.136024	101.275885	MAJLIS DAERAH TAPAH
129	T128	25	4.136051	101.276097	MAJLIS DAERAH TAPAH
130	T129	25	4.136102	101.276315	MAJLIS DAERAH TAPAH
131	T130	25	4.136134	101.276534	MAJLIS DAERAH TAPAH

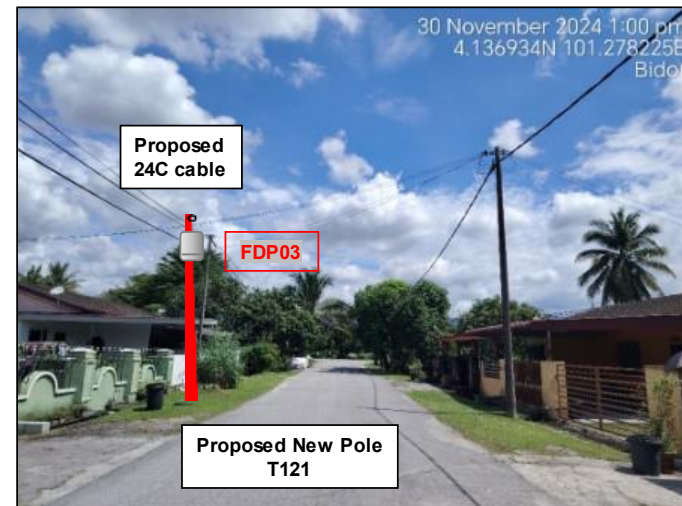
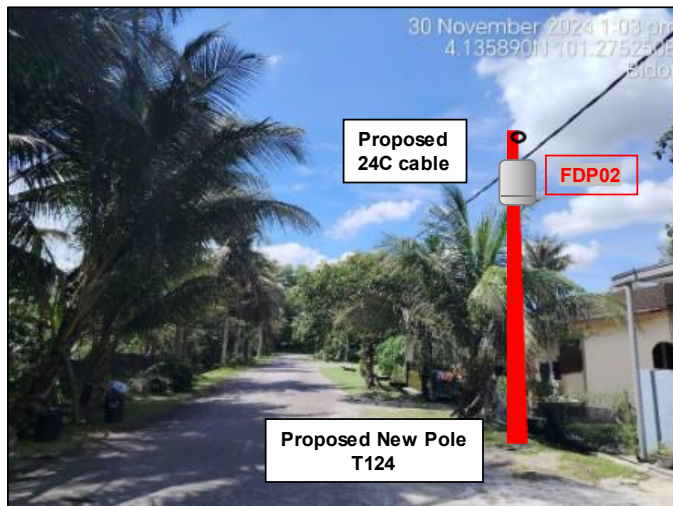
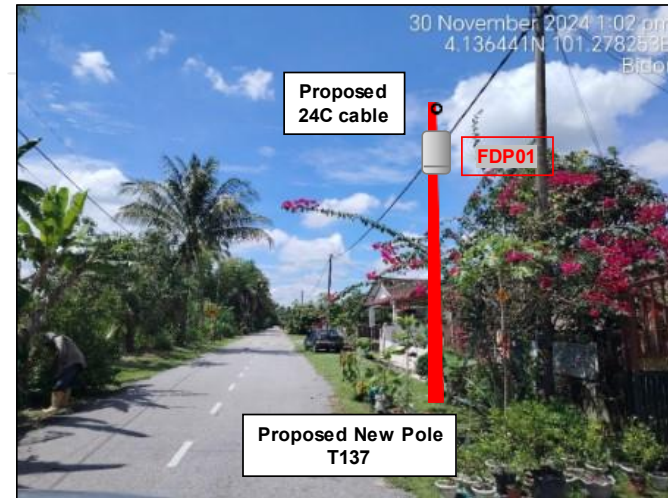
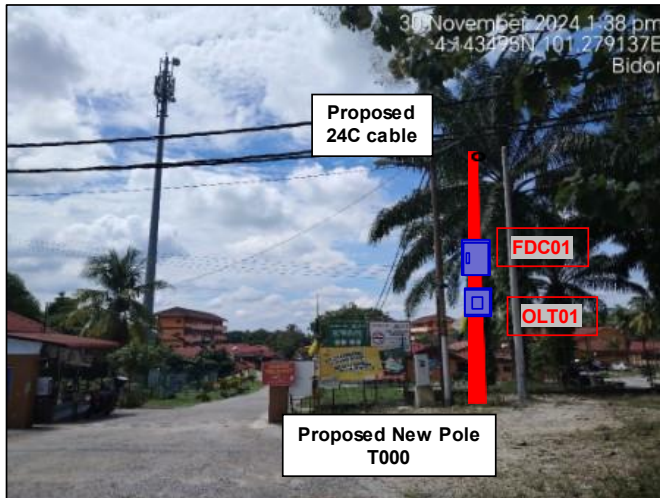


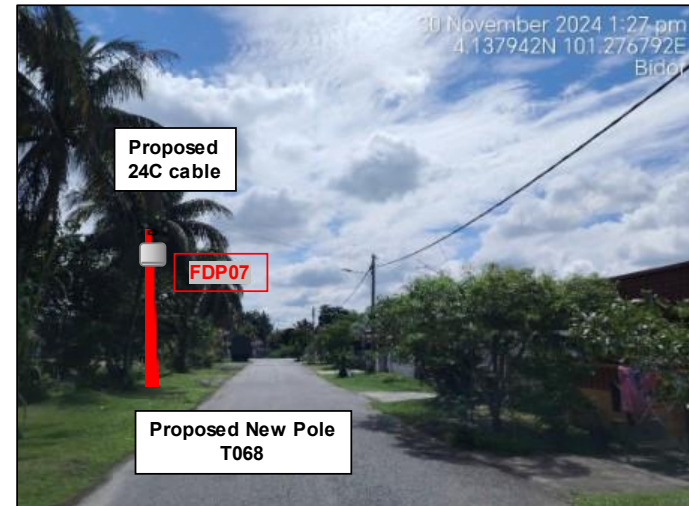
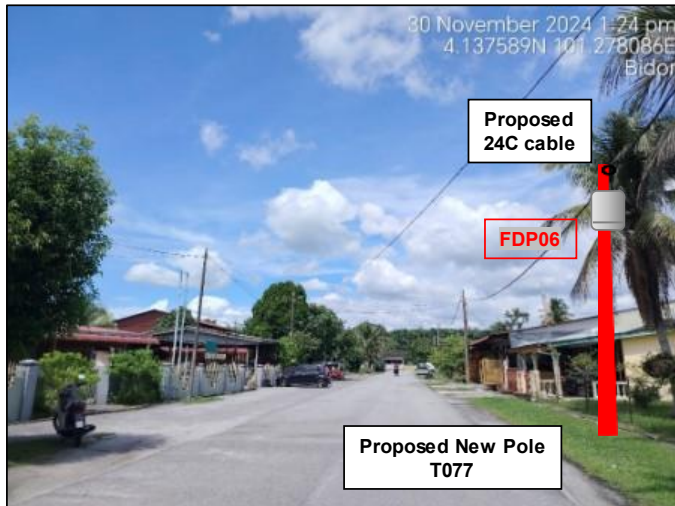
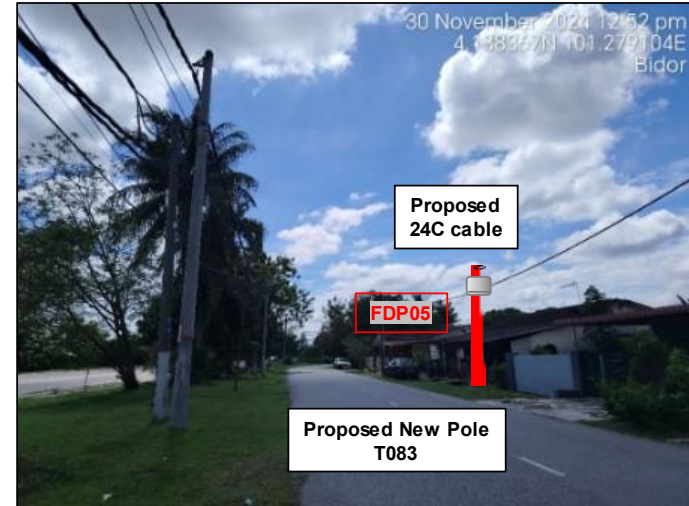
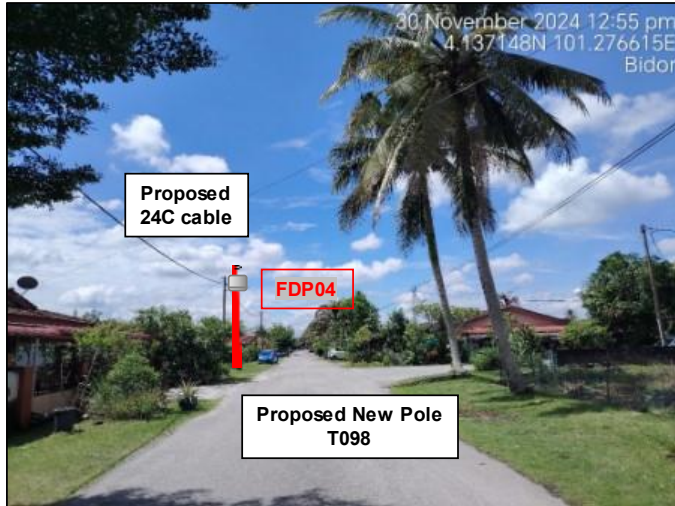
PROJEK PENYEDIAAN DAN PENYELENGGARAAN POINT OF PRESENCE (POP) FASA 2: HAB INFRASTRUKTUR GENTIAN OPTIK BERHAMPIRAN DENGAN SEKOLAH, KAWASAN PERINDUSTRIAN, PREMIS KERAJAAN DAN KOMUNITI SEKITARNYA OLEH KEMENTERIAN KOMUNIKASI MALAYSIA - ZON UTARA (KKMM.400-11/17/132(1))

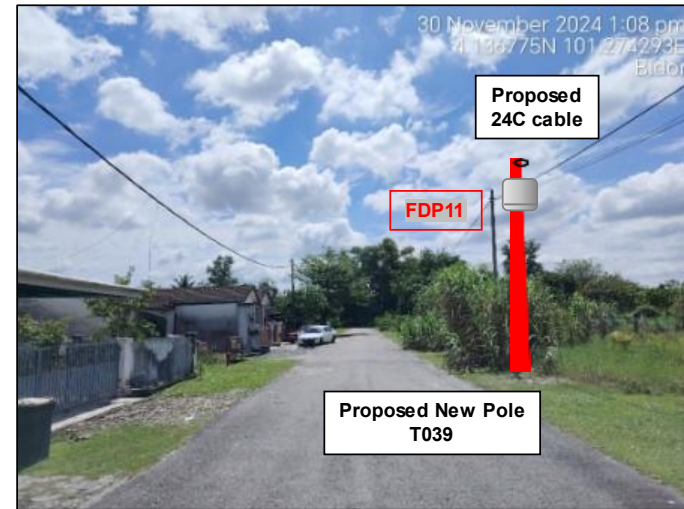
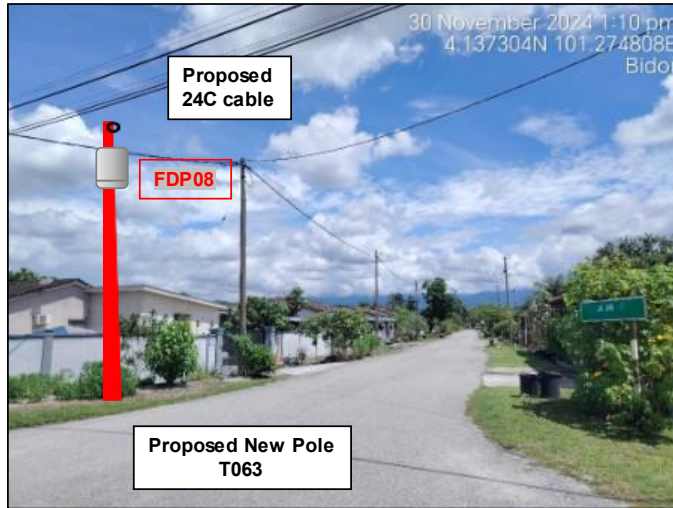


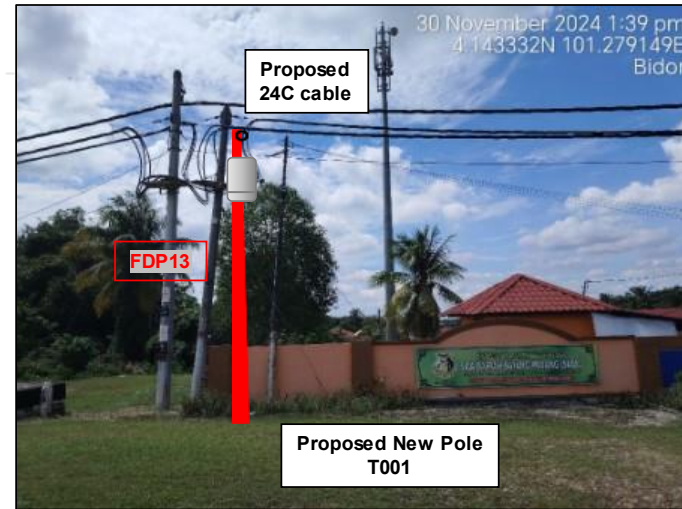
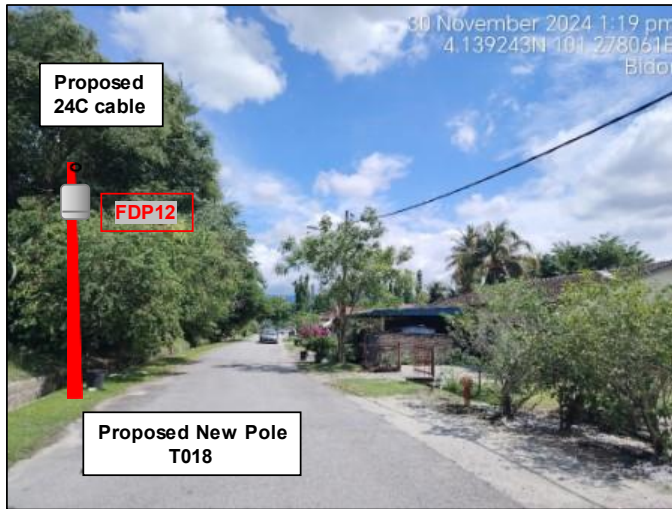
132	T131	25	4.136169	101.276738	MAJLIS DAERAH TAPAH
133	T132	30	4.136225	101.276988	MAJLIS DAERAH TAPAH
134	T133	40	4.136284	101.277334	MAJLIS DAERAH TAPAH
135	T134	25	4.136324	101.277548	MAJLIS DAERAH TAPAH
136	T135	25	4.136362	101.277792	MAJLIS DAERAH TAPAH
137	T136	25	4.136399	101.277994	MAJLIS DAERAH TAPAH
138	T137	25	4.136431	101.2782	MAJLIS DAERAH TAPAH

**Site Photos – Proposed to install pole**



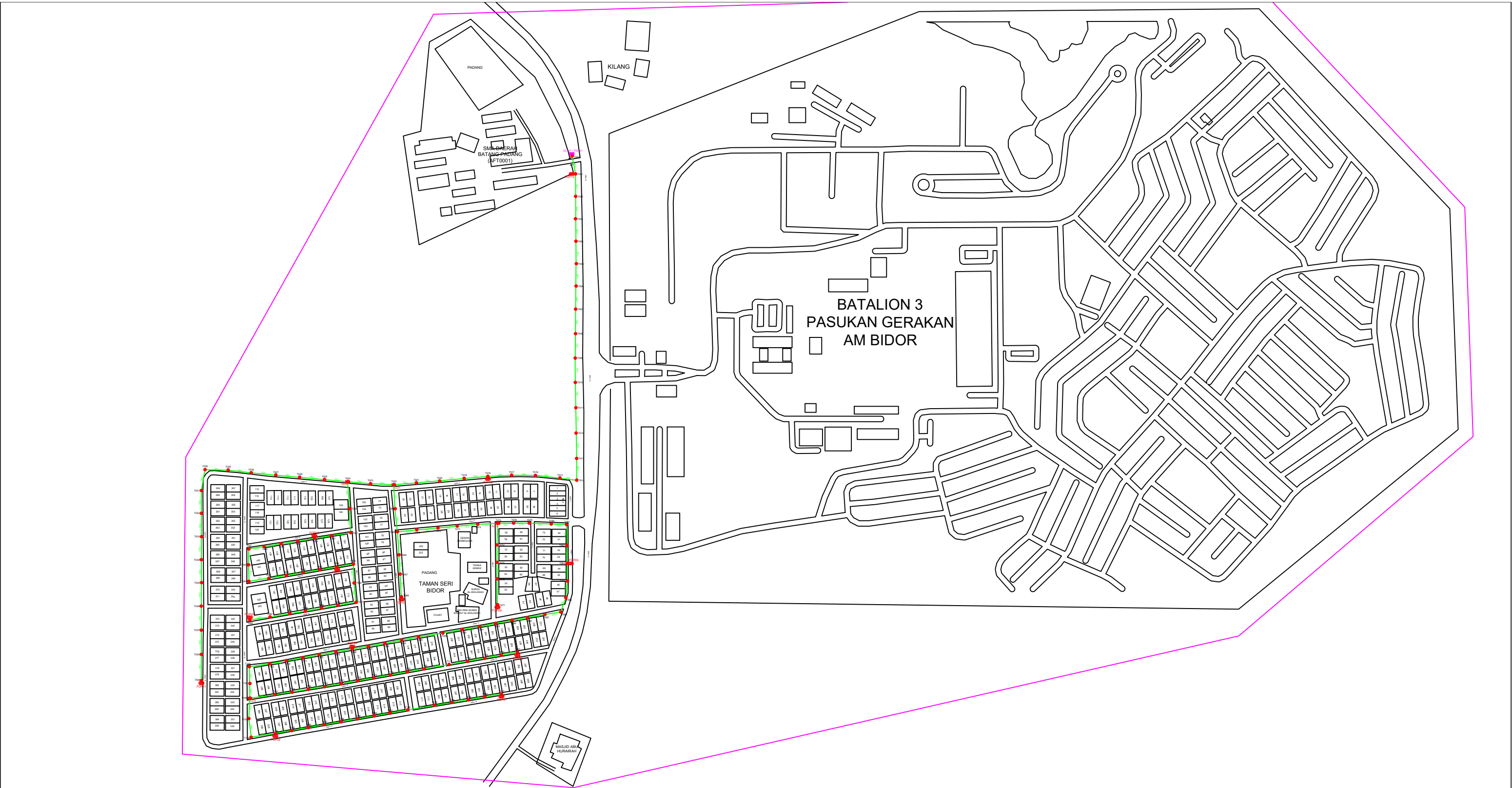






3rd Parties Dependencies

No.	Local Council/ Authority	Remark
1	JKR Batang Padang	
2	Majlis Daerah Tapah	
3		
4		
5		
6		



12C FOC	Installed 1:4 / 1:8 / 1:32 splitter	138	IB30	New Manhole (PIT)	Micro-Trenching (Meter)	MH1	MH NO.
24C FOC	4240m Installed Patch Cord	270	C7	New Manhole(JRC7)	Temporary Infra (Meter)	TKS-1	Existing TNB Pole NO.
48C FOC	FDC	13		FDP Boundary	Loop / Coil (Meter)	P001	New Pole NO.
96C FOC	Closure	13		HDD (Meter)	#	CL01	Closure NO.
144C FOC	Existing Closure			Open Cut (Meter)	C01	DP1	FDP NO.
	Installed Pole (9m)			Suspension			
	Installed Pole (7.5M)	138		Tension			
	Installed Pole (6.7M)			Pole Ring			
	Existing TNB Pole			FDP with (1:8) splitter			
	Installed Riser			Existing Manhole			

ACTUAL HOMEPASS :

KEY PLAN:

PROJECT OWNER:



PRIVASAT

MAIN CONTRACTOR:



A member of OCK Group Berhad

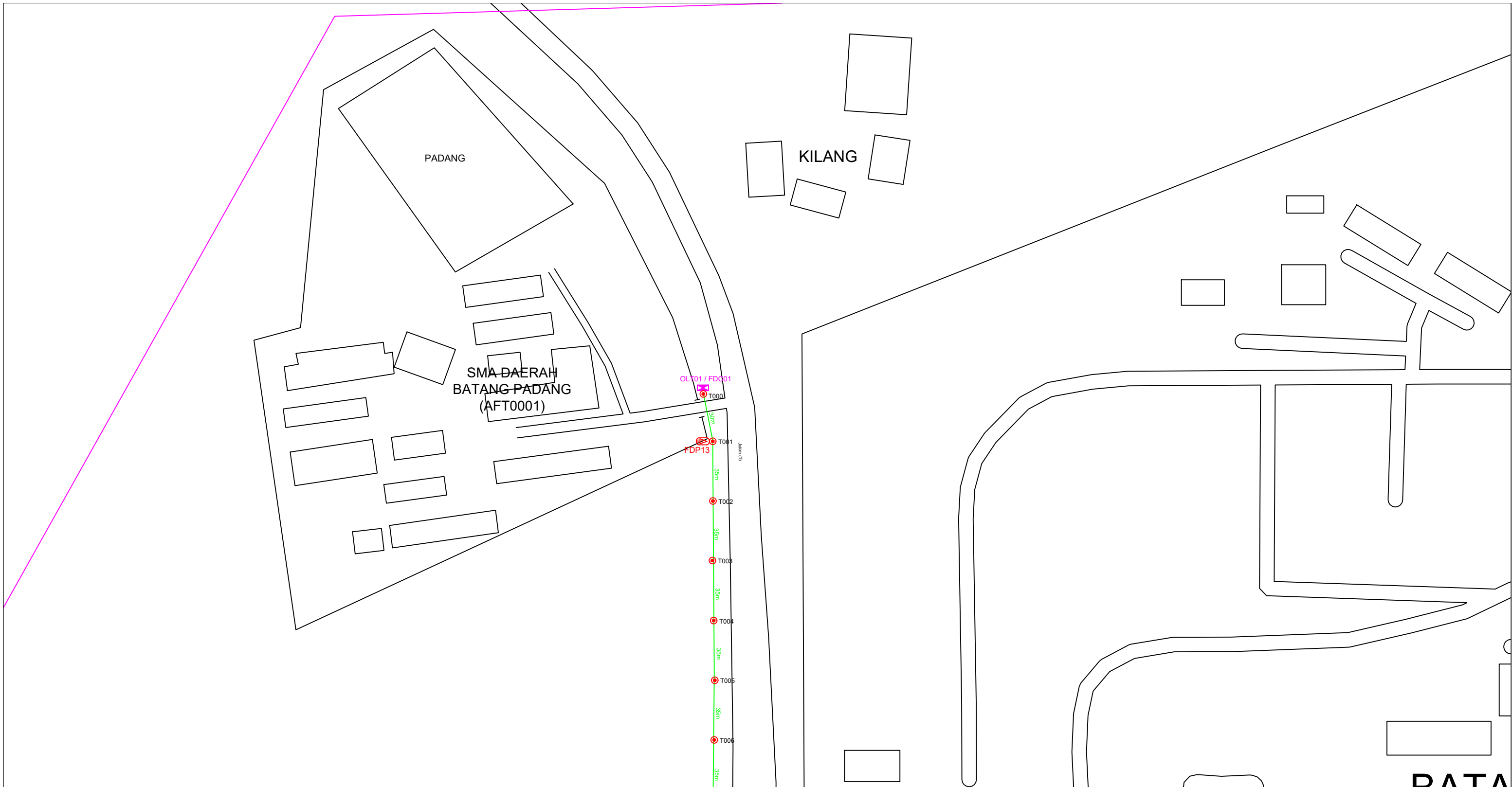
SUB-CONTRACTOR:

PROJECT TITLE:  
 CONTRACTOR FOR SURVEY, TECHNICAL PROPOSAL AND WAYLEAVE & PERMIT APPROVAL -POP2 PROJECT

DRAWING TITLE:  
 Construction Drawing  
 AFT0001  
 SMA DAERAH BATANG PADANG 1

PROJECT PHASE:  
 POP 2

Design By :	Date :	2/12/2024
Drawn By :	Scale :	NTS
Checked By :	Job Number :	JOB/NUMBER
DRAWING NUMBER :	Sheet :	1/4
AFT0001-CD-01		Size : A3
THIS PRINT AND ITS COPYRIGHT ARE THE PROPERTY OF STEADCOM SDN BHD		



DATA

12C FOC	Installed 1:4 / 1:8 / 1:32 splitter	138	Installed Pole (9m)	s	Suspension	138	IB 30	New Manhole (PIT)	Micro-Trenching (Meter)	MH1	MH NO.
24C FOC	4240m Installed Patch Cord	138	Installed Pole (7.5M)	t	Tension	270	C7	New Manhole(JRC7)	Temporary Infra (Meter)	TKS-1	Existing TNB Pole NO.
48C FOC	FDC	1	Installed Pole (6.7M)	⊗	Pole Ring	13		FDP Boundary	Loop / Coil (Meter)	P001	New Pole NO.
96C FOC	Closure	4	Existing TNB Pole	⊗	FDP with (1:8) splitter	13		HDD (Meter)	#	CL01	Closure NO.
144C FOC	Existing Closure		Installed Riser	⊗	Existing Manhole			Open Cut (Meter)	C01	DP1	FDP NO.

ACTUAL HOMEPASS :

KEY PLAN:	PROJECT OWNER:	MAIN CONTRACTOR:	SUB-CONTRACTOR:	PROJECT TITLE:	DRAWING TITLE:	Design By :	Date :
				CONTRACTOR FOR SURVEY, TECHNICAL PROPOSAL AND WAYLEAVE & PERMIT APPROVAL -POP2 PROJECT	Construction Drawing AFT0001 SMA DAERAH BATANG PADANG 1	Drawn By :	2/12/2024
					PROJECT PHASE:	Checked By :	Scale :
					POP 2	Job Number :	NTS
						DRAWING NUMBER :	Job Number :
						AFT0001-CD-01	JOB/NUMBER
						Sheet :	2/4
						THIS PRINT AND ITS COPYRIGHT ARE THE PROPERTY OF STEADCOM SDN BHD	Size :
							A3

# BATALION 3 PASUKAN GERAKAN AM BIDOR



12C FOC	Installed 1:4 / 1:8 / 1:32 splitter	Installed Pole (9m)	Suspension	138	B30	New Manhole (PIT)	Micro-Trenching (Meter)	MH1	MH NO.
24C FOC	4240m Installed Patch Cord	Installed Pole (7.5M)	Tension	270	C7	New Manhole(JRC7)	Temporary Infra (Meter)	TKS-1	Existing TNB Pole NO.
48C FOC	FDC	Installed Pole (6.7M)	Pole Ring	13		FDP Boundary	Loop / Coil (Meter)	P001	New Pole NO.
96C FOC	Closure	Existing TNB Pole	FDP with (1:8) splitter	13		HDD (Meter)	#	CL01	Closure NO.
144C FOC	Existing Closure	Installed Riser	Existing Manhole			Open Cut (Meter)	C01	DP1	FDP NO.

ACTUAL HOMEPASS :

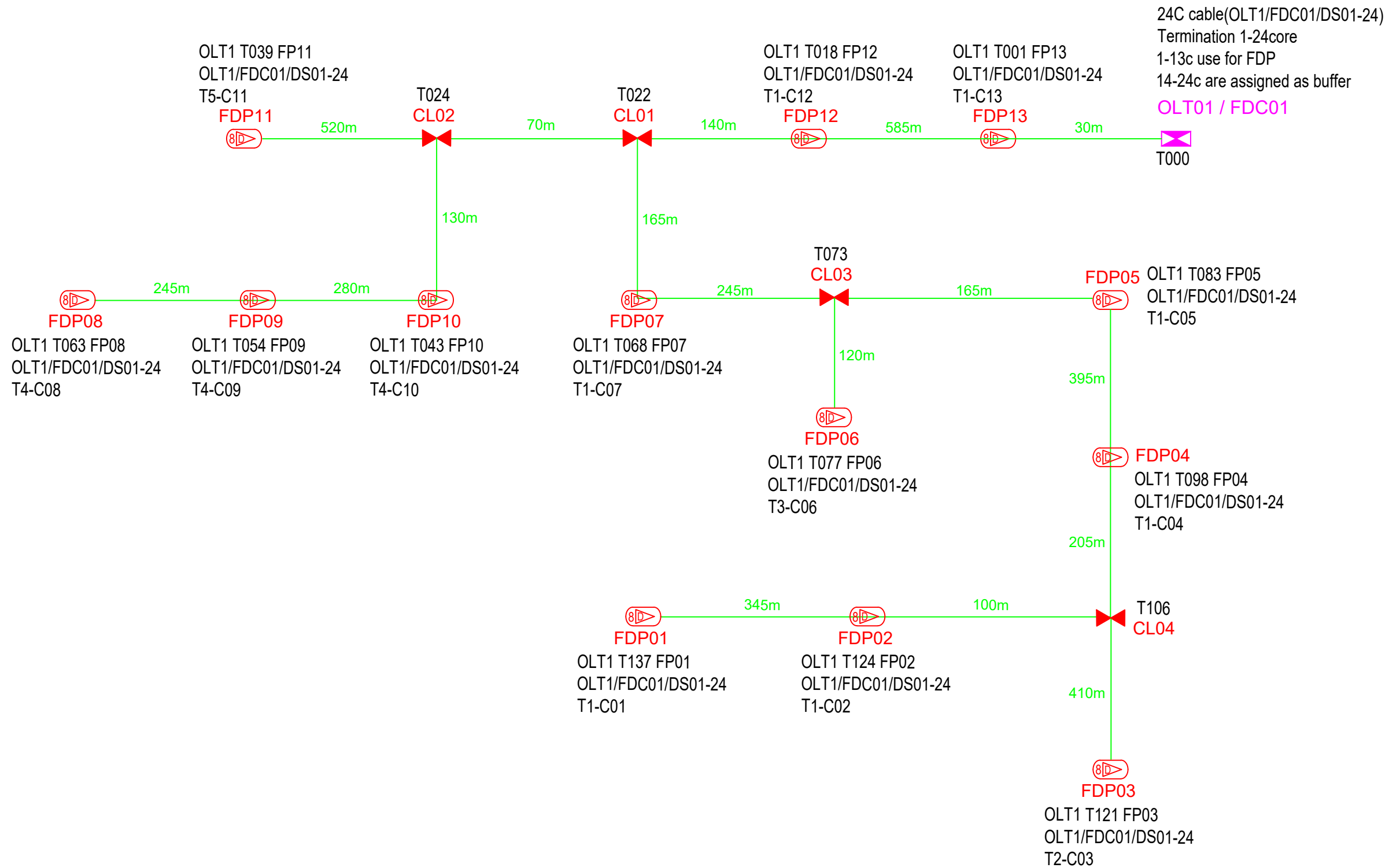
KEY PLAN:	PROJECT OWNER:	MAIN CONTRACTOR:	SUB-CONTRACTOR:	PROJECT TITLE:	DRAWING TITLE:	Design By :	Date :
				CONTRACTOR FOR SURVEY, TECHNICAL PROPOSAL AND WAYLEAVE & PERMIT APPROVAL -POP2 PROJECT	Construction Drawing AFT0001 SMA DAERAH BATANG PADANG 1	Drawn By :	2/12/2024
					PROJECT PHASE:	Checked By :	Scale :
					POP 2	Job Number :	NTS
						DRAWING NUMBER :	Job Number :
						AFT0001-CD-01	JOB/NUMBER
						Sheet :	3/4
						THIS PRINT AND ITS COPYRIGHT ARE THE PROPERTY OF STEADCOM SDN BHD	Size :
							A3



12C FOC	Installed 1:4 / 1:8 / 1:32 splitter	Installed Pole (9m)	Suspension	138	MB30	New Manhole (PIT)	Micro-Trenching (Meter)	MH1	MH NO.
24C FOC	Installed Patch Cord	Installed Pole (7.5M)	Tension	270	C7	New Manhole(JRC7)	Temporary Infra (Meter)	TKS-1	Existing TNB Pole NO.
48C FOC	FDC	Installed Pole (6.7M)	Pole Ring	13		FDP Boundary	Loop / Coil (Meter)	P001	New Pole NO.
96C FOC	Closure	Existing TNB Pole	FDP with (1:8) splitter	13		HDD (Meter)	#	CL01	Closure NO.
144C FOC	Existing Closure	Installed Riser	Existing Manhole			Open Cut (Meter)	CO1	DP1	FDP NO.

ACTUAL HOMEPASS :

<b>KEY PLAN:</b>  	<b>PROJECT OWNER:</b>  A member of OCK Group Berhad	<b>MAIN CONTRACTOR:</b>  A member of OCK Group Berhad	<b>SUB-CONTRACTOR:</b>	<b>PROJECT TITLE:</b> CONTRACTOR FOR SURVEY, TECHNICAL PROPOSAL AND WAYLEAVE & PERMIT APPROVAL -POP2 PROJECT	<b>DRAWING TITLE:</b> Construction Drawing AFT0001 SMA DAERAH BATANG PADANG 1 PROJECT PHASE: POP 2	<b>Design By :</b>	<b>Date :</b> 2/12/2024
						<b>Drawn By :</b>	<b>Scale :</b> NTS
<b>DRAWING NUMBER :</b> AFT0001-CD-01						<b>Checked By :</b>	<b>Job Number :</b> JOB/NUMBER
<b>Sheet :</b> 4/4						<b>Size :</b> A3	THIS PRINT AND ITS COPYRIGHT ARE THE PROPERTY OF STEADCOM SDN BHD



12C FOC	Installed 1:4 / 1:8 / 1:32 splitter	Installed Pole (9m)	Suspension	138	MB30	New Manhole (PIT)	Micro-Trenching (Meter)	MH1	MH NO.
24C FOC	4240m Installed Patch Cord	Installed Pole (7.5M)	Tension	270	C7	New Manhole(JRC7)	Temporary Infra (Meter)	TKS-1	Existing TNB Pole NO.
48C FOC	FDC	Installed Pole (6.7M)	Pole Ring	13		FDP Boundary	Loop / Coil (Meter)	P001	New Pole NO.
96C FOC	Closure	Existing TNB Pole	FDP with (1:8) splitter	13		HDD (Meter)	#	CL01	Closure NO.
144C FOC	Existing Closure	Installed Riser	Existing Manhole			Open Cut (Meter)	C01	DP1	FDP NO.

ACTUAL HOMEPASS :

KEY PLAN:	PROJECT OWNER: 	MAIN CONTRACTOR: 	SUB-CONTRACTOR:	PROJECT TITLE: CONTRACTOR FOR SURVEY, TECHNICAL PROPOSAL AND WAYLEAVE & PERMIT APPROVAL -POP2 PROJECT	DRAWING TITLE: Construction Drawing AFT0001 SMA DAERAH BATANG PADANG 1	Design By : Date : 2/12/2024
					PROJECT PHASE: POP 2	Scale : NTS
						Job Number : JOB/NUMBER
						Sheet : 1/1
						Size : A3

DRAWING NUMBER : AFT0001-CD-01

THIS PRINT AND ITS COPYRIGHT ARE THE PROPERTY OF STEADCOM SDN BHD