



TECHNICAL PROPOSAL (Crossing
Road)

Sekolah Kebangsaan Bukit Besi
(TBA1005)

HDD 1
(Hadapan
Penjara)

4.79345, 103.17902

(MH1)

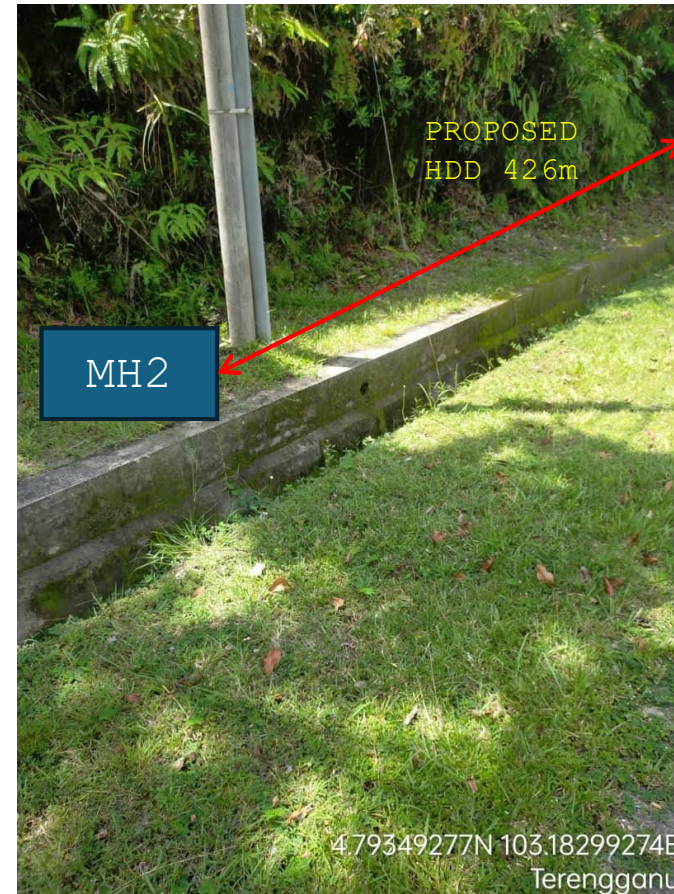
4.79354, 103.18297

(MH2)

426meter



Route HDD



HDD 2
(CROSSING ROAD)

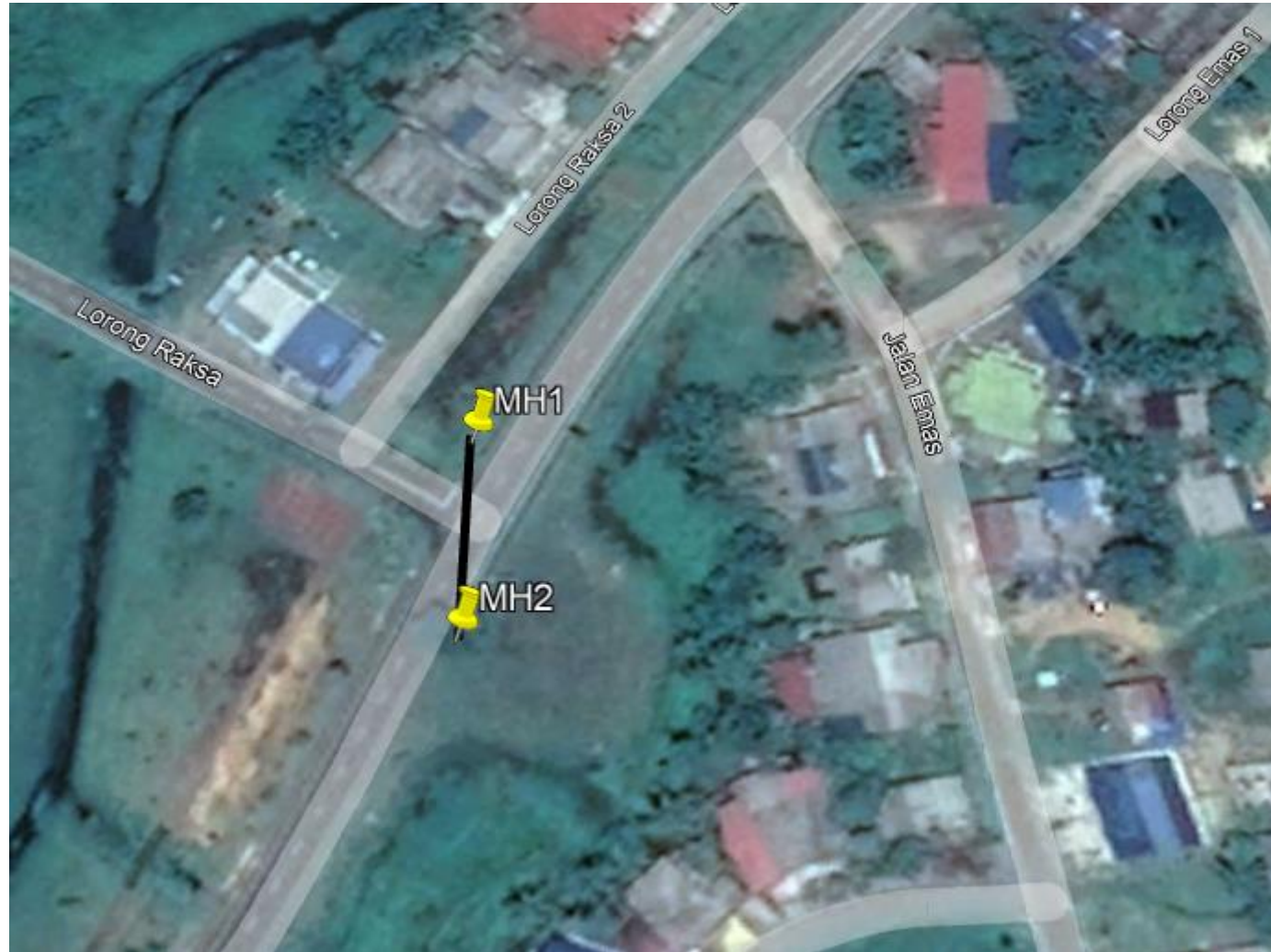
4.75788, 103.18974

(MH1)

4.75754, 103.18973

(MH2)

39meter



Route HDD

