

## TECHNICAL PROPOSAL

### POP2 ABA5063 SEKOLAH KEBANGSAAN PERMATANG (D-SIDE)

**Company Name** : KNZ ENGINEERING SDN BHD.  
**Company Address** : NO 60 & 60 A JALAN KLEBANG INDAH 1 MEDAN KLEBANG INDAH 30010 IPOH PERAK  
**Prepared By** : FARHAH AFIQAH BINTI AMDON  
**Date** : 26/12/2024



#### Starting Point

**Site / Boundary Name** : Teluk Intan  
**Address** : SK Permatang, Parit 7B Sg Manik, 36000 Teluk Intan, Perak  
**District** : Teluk Intan  
**Postcode** : 36000  
**State** : Perak  
**GPS Coordinate** : 4.0584712972992, 101.078246429308  
**LRD** : A

#### End Point

**Site / Boundary Name** : Teluk Intan  
**Address** : Parit 28R Sg Manik, 36000 Teluk Intan, Perak  
**District** : Teluk Intan  
**Postcode** : 36000  
**State** : Perak  
**GPS Coordinate** : 4.0424019263552, 101.067923748254  
**LRD** : B



PROJEK PENYEDIAAN DAN PENYELENGGARAAN POINT OF PRESENCE (POP) FASA 2: HAB INFRASTRUKTUR GENTIAN OPTIK BERHAMPIRAN DENGAN SEKOLAH, KAWASAN PERINDUSTRIAN, PREMIS KERAJAAN DAN KOMUNITI SEKITARNYA OLEH KEMENTERIAN KOMUNIKASI MALAYSIA – ZON UTARA (KKMM.400-11/17/132(1))



## 1.0 WORK SUMMARY

NO	PROPOSED DISTANCE AND METHOD	UNIT	QUANTITY
1	Horizontal Directional Drilling (HDD)	m	0
2	Carriage Way Open Trench (CW)	m	0
3	Grass Verge Open Trenching (GV)	m	0
4	Micro Trenching (MT)	m	0
Total			0

NO	OTHER INFORMATION	UNIT	QUANTITY
1	Installation of Short Span ADSS Fibre Cables	m	15,130
2	Install New Pole	ea	343
3	Install New JRC7 Manhole	ea	0
4	Install GI Riser 100mm	ea	0
5	Install Fiber Distribution Point	ea	13
6	Install Closure	ea	4
7	Estimated Time Required for Completion	days	30

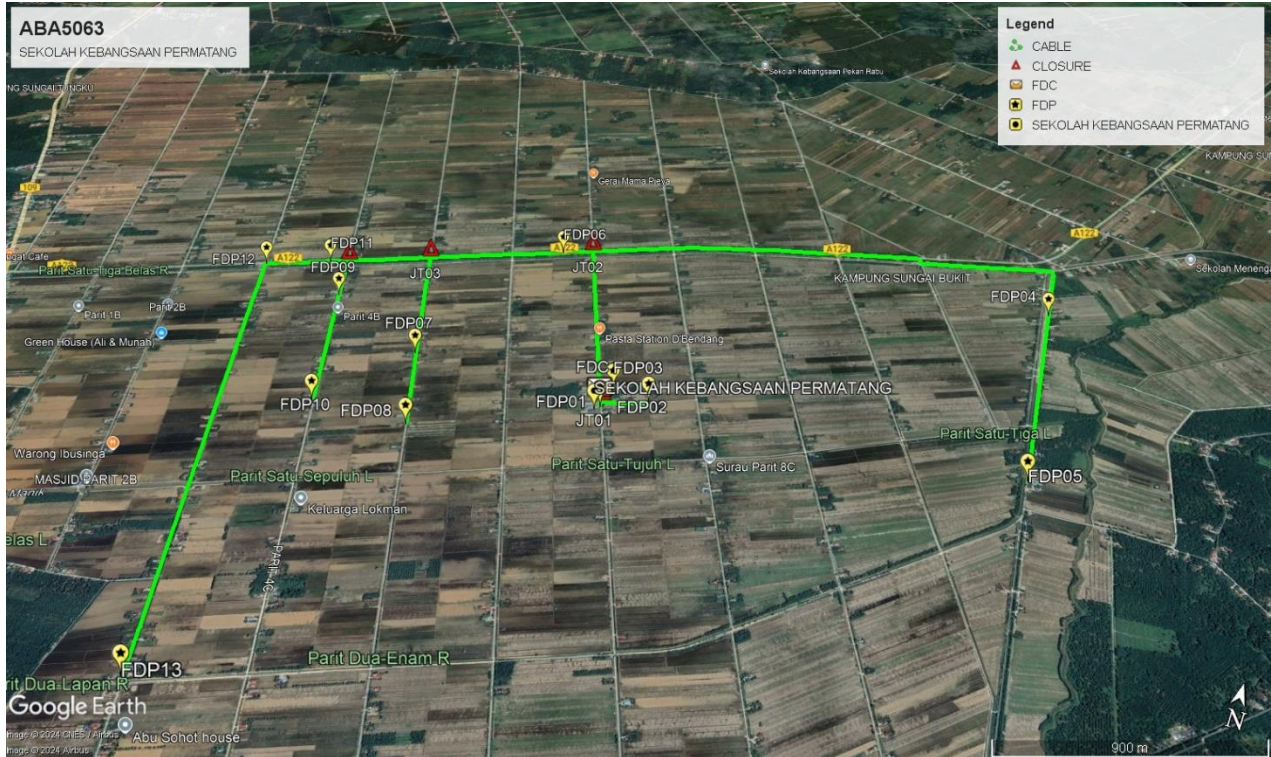
## 2.0 LOCAL AUTHORITY SUMMARY

### Daerah Hilir Perak

Bil	Items	Owner	Quantity	Distance
1	HDD	JKR	-	-
		Majlis	-	-
		Estate / Private Land	-	-
2	New Pole	JKR	98	3,920m
		Majlis	245	10,650m
		Estate / Private Land	-	-
3	Existing TNB Pole	JKR	-	-
		Majlis	-	-
		Estate / Private Land	-	-
Total				14,570m

Site Plan -KMZ (Overview site area)

Proposed FDP and Closure



Proposed New Pole



**Site Plan - KMZ Routing (All Local Authority)**



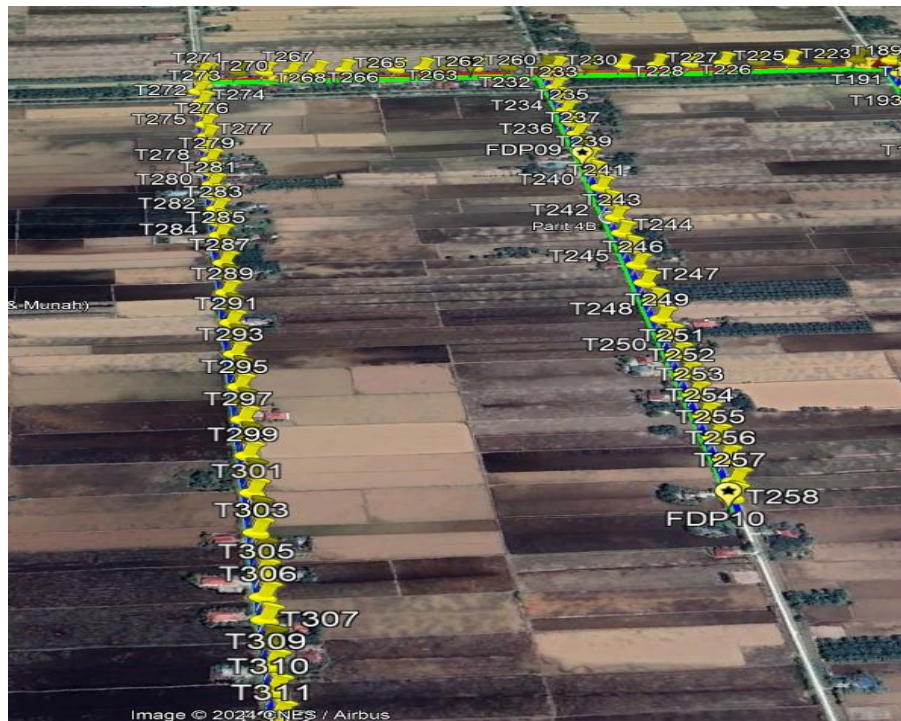
**Red Colour – JKR Road**

**Blue Colour - Majlis Road**

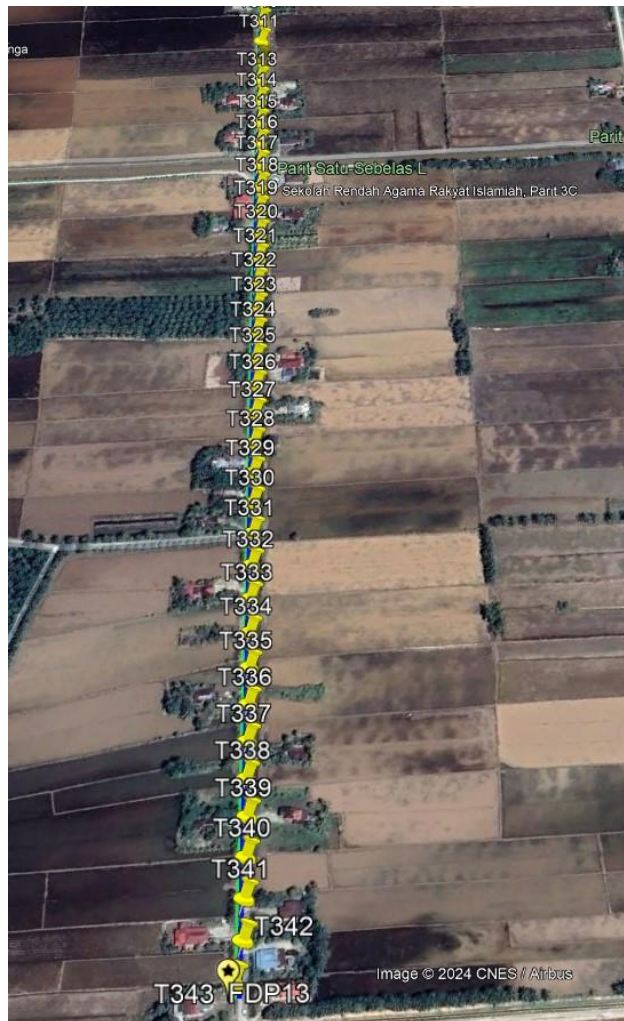




Route 3



Route 3.1



**Route 3.2**

### 3.0 PROPOSED NEW POLE

Proposed New Pole Coordinate					
No.	Pole Number	Distance (m)	Latitude	Longitude	Local Authority
1	T001	40	4.058471	101.0782464	Majlis Perbandaran Teluk Intan
2	T002	40	4.05874427205993	101.078144345776	Majlis Perbandaran Teluk Intan
3	T003	40	4.05878674280114	101.078308575032	Majlis Perbandaran Teluk Intan
4	T004	40	4.05882763968396	101.078553128788	Majlis Perbandaran Teluk Intan
5	T005	40	4.05885565195006	101.078806853647	Majlis Perbandaran Teluk Intan
6	T006	40	4.0589173432065	101.079060062103	Majlis Perbandaran Teluk Intan
7	T007	40	4.05898953618432	101.079312810382	Majlis Perbandaran Teluk Intan
8	T008	40	4.05907085289552	101.07955045373	Majlis Perbandaran Teluk Intan
9	T009	40	4.05914692067413	101.079796997579	Majlis Perbandaran Teluk Intan
10	T010	40	4.05925915690409	101.080017111067	Majlis Perbandaran Teluk Intan
11	T011	40	4.05908018240323	101.078028827847	Majlis Perbandaran Teluk Intan
12	T012	40	4.05946173690391	101.077878997578	Majlis Perbandaran Teluk Intan
13	T013	40	4.05950335355361	101.077933512129	Majlis Perbandaran Teluk Intan
14	T014	40	4.05952132538289	101.078036392135	Majlis Perbandaran Teluk Intan
15	T015	40	4.05952720748642	101.078154075005	Majlis Perbandaran Teluk Intan
16	T016	40	4.05958146726592	101.078288572314	Majlis Perbandaran Teluk Intan
17	T017	40	4.05963178172913	101.078421989266	Majlis Perbandaran Teluk Intan
18	T018	40	4.05963787922792	101.077800217552	Majlis Perbandaran Teluk Intan
19	T019	40	4.05992670022068	101.077697118481	Majlis Perbandaran Teluk Intan
20	T020	40	4.06021565727004	101.077590397456	Majlis Perbandaran Teluk Intan
21	T021	40	4.06051339725333	101.077485004615	Majlis Perbandaran Teluk Intan
22	T022	40	4.06081528494513	101.077378814144	Majlis Perbandaran Teluk Intan
23	T023	40	4.06111612445091	101.077270409284	Majlis Perbandaran Teluk Intan
24	T024	40	4.06140991924701	101.077164671355	Majlis Perbandaran Teluk Intan
25	T025	40	4.06171195607322	101.077054940726	Majlis Perbandaran Teluk Intan
26	T026	40	4.06200287676703	101.076945847345	Majlis Perbandaran Teluk Intan

### 3.0 PROPOSED NEW POLE

Proposed New Pole Coordinate					
No.	Pole Number	Distance (m)	Latitude	Longitude	Local Authority
27	T027	40	4.06229466453086	101.076835756917	Majlis Perbandaran Teluk Intan
28	T028	40	4.0625794099062	101.076734169489	Majlis Perbandaran Teluk Intan
29	T029	40	4.06287814090959	101.076612974616	Majlis Perbandaran Teluk Intan
30	T030	40	4.06317779531466	101.076516178212	Majlis Perbandaran Teluk Intan
31	T031	40	4.06348695508593	101.076402819154	Majlis Perbandaran Teluk Intan
32	T032	40	4.06379014737976	101.076295112256	Majlis Perbandaran Teluk Intan
33	T033	40	4.06407853749496	101.07619795253	Majlis Perbandaran Teluk Intan
34	T034	40	4.06436048461091	101.076092635374	Majlis Perbandaran Teluk Intan
35	T035	40	4.06463904403418	101.075987867186	Majlis Perbandaran Teluk Intan
36	T036	40	4.06493220421952	101.075878235552	Majlis Perbandaran Teluk Intan
37	T037	40	4.06520712146882	101.07576874574	Majlis Perbandaran Teluk Intan
38	T038	40	4.06548628020733	101.075655150982	Majlis Perbandaran Teluk Intan
39	T039	40	4.06577724827684	101.075550125004	Majlis Perbandaran Teluk Intan
40	T040	40	4.0660581603543	101.07543504988	Majlis Perbandaran Teluk Intan
41	T041	40	4.06634335379341	101.075340071673	Majlis Perbandaran Teluk Intan
42	T042	40	4.06662579846107	101.075238706836	Majlis Perbandaran Teluk Intan
43	T043	40	4.06692479958436	101.075132292866	Majlis Perbandaran Teluk Intan
44	T044	40	4.06720409260749	101.075029816165	Majlis Perbandaran Teluk Intan
45	T045	40	4.06749488241175	101.074924069231	Majlis Perbandaran Teluk Intan
46	T046	40	4.06779082021938	101.074820924704	Majlis Perbandaran Teluk Intan
47	T047	40	4.0680810654682	101.074717902048	Majlis Perbandaran Teluk Intan
48	T048	40	4.06836424786576	101.074637874569	Majlis Perbandaran Teluk Intan
49	T049	40	4.06864992591995	101.074536299681	Majlis Perbandaran Teluk Intan
50	T050	40	4.06880595593026	101.074455085918	JKR Hilir Perak
51	T051	40	4.06891538732779	101.07472421	JKR Hilir Perak
52	T052	40	4.0690321053675	101.07503962846	JKR Hilir Perak
53	T053	40	4.0691398288501	101.075337017088	JKR Hilir Perak

### 3.0 PROPOSED NEW POLE

Proposed New Pole Coordinate					
No.	Pole Number	Distance (m)	Latitude	Longitude	Local Authority
54	T054	40	4.06924759868537	101.07561639903	JKR Hilir Perak
55	T055	40	4.06935532187385	101.07591378772	JKR Hilir Perak
56	T056	40	4.06948117318552	101.076193216052	JKR Hilir Perak
57	T057	40	4.06958889607639	101.076490604811	JKR Hilir Perak
58	T058	40	4.06969661881623	101.076787993601	JKR Hilir Perak
59	T059	40	4.06980434140504	101.077085382421	JKR Hilir Perak
60	T060	40	4.06990302297218	101.077382748093	JKR Hilir Perak
61	T061	40	4.07001076853978	101.077671133615	JKR Hilir Perak
62	T062	40	4.07010944981392	101.077968499336	JKR Hilir Perak
63	T063	40	4.07022621267137	101.078265911461	JKR Hilir Perak
64	T064	40	4.07033395780144	101.078554297076	JKR Hilir Perak
65	T065	40	4.07045069706063	101.078860712626	JKR Hilir Perak
66	T066	40	4.07053127271637	101.079167035405	JKR Hilir Perak
67	T067	40	4.07061189482899	101.079455351487	JKR Hilir Perak
68	T068	40	4.07068340603263	101.079770654418	JKR Hilir Perak
69	T069	40	4.07073685868422	101.08007690757	JKR Hilir Perak
70	T070	40	4.07080839290435	101.080383207138	JKR Hilir Perak
71	T071	40	4.07088892119493	101.080707536619	JKR Hilir Perak
72	T072	40	4.07096038514958	101.081040846223	JKR Hilir Perak
73	T073	40	4.07104093643551	101.081356172358	JKR Hilir Perak
74	T074	40	4.07110345253401	101.081653445342	JKR Hilir Perak
75	T075	40	4.07117500934269	101.081950741556	JKR Hilir Perak
76	T076	40	4.07125553684344	101.082275071036	JKR Hilir Perak
77	T077	40	4.07129999418482	101.082563294175	JKR Hilir Perak
78	T078	40	4.0713534455553	101.082869547221	JKR Hilir Perak
79	T079	40	4.07142495511284	101.083184850093	JKR Hilir Perak
80	T080	40	4.07147840620052	101.083491103111	JKR Hilir Perak
81	T081	40	4.07155893293679	101.083815432563	JKR Hilir Perak
82	T082	40	4.0716033662652	101.084112658956	JKR Hilir Perak
83	T083	40	4.07167487522728	101.084427961797	JKR Hilir Perak
84	T084	40	4.07168321508072	101.084698085072	JKR Hilir Perak

### 3.0 PROPOSED NEW POLE

Proposed New Pole Coordinate					
No.	Pole Number	Distance (m)	Latitude	Longitude	Local Authority
85	T085	40	4.07176367110984	101.085049424483	JKR Hilir Perak
86	T086	40	4.07182618555583	101.085346697349	JKR Hilir Perak
87	T087	40	4.07187970580347	101.085625940265	JKR Hilir Perak
88	T088	40	4.07194219660818	101.085932216442	JKR Hilir Perak
89	T089	40	4.07200461711162	101.086265502591	JKR Hilir Perak
90	T090	40	4.07207610165784	101.08658980869	JKR Hilir Perak
91	T091	40	4.07214765622751	101.086887104808	JKR Hilir Perak
92	T092	40	4.0722010822362	101.08720236097	JKR Hilir Perak
93	T093	40	4.07227263652711	101.087499657078	JKR Hilir Perak
94	T094	40	4.07231711506216	101.087778876614	JKR Hilir Perak
95	T095	40	4.07235243563015	101.088103089424	JKR Hilir Perak
96	T096	40	4.07242396610416	101.088409388823	JKR Hilir Perak
97	T097	40	4.0724684208531	101.088697611622	JKR Hilir Perak
98	T098	40	4.07250388151918	101.088967804444	JKR Hilir Perak
99	T099	40	4.07258433527474	101.089319143722	JKR Hilir Perak
100	T100	40	4.07245767036467	101.089354830405	Majlis Perbandaran Teluk Intan
101	T101	40	4.07216441354008	101.089410978478	Majlis Perbandaran Teluk Intan
102	T102	40	4.07224952915955	101.089771140205	Majlis Perbandaran Teluk Intan
103	T103	40	4.07232407959053	101.090137034335	Majlis Perbandaran Teluk Intan
104	T104	40	4.07239624103716	101.090499253108	Majlis Perbandaran Teluk Intan
105	T105	40	4.07246962734551	101.090877169281	Majlis Perbandaran Teluk Intan
106	T106	40	4.07253319516991	101.091251110976	Majlis Perbandaran Teluk Intan
107	T107	40	4.07259625554043	101.091612035677	Majlis Perbandaran Teluk Intan
108	T108	40	4.07267424354347	101.09197645913	Majlis Perbandaran Teluk Intan
109	T109	40	4.07273270989735	101.092335766604	Majlis Perbandaran Teluk Intan
110	T110	40	4.0728046801507	101.092701522864	Majlis Perbandaran Teluk Intan
111	T111	40	4.07288147648131	101.093074373191	Majlis Perbandaran Teluk Intan

### 3.0 PROPOSED NEW POLE

Proposed New Pole Coordinate					
No.	Pole Number	Distance (m)	Latitude	Longitude	Local Authority
112	T112	40	4.07295020996763	101.093444359972	Majlis Perbandaran Teluk Intan
113	T113	40	4.07301949146498	101.093814850758	Majlis Perbandaran Teluk Intan
114	T114	40	4.07309137974877	101.09418434377	Majlis Perbandaran Teluk Intan
115	T115	40	4.07315127793917	101.09456703277	Majlis Perbandaran Teluk Intan
116	T116	40	4.07321740029226	101.094960909708	Majlis Perbandaran Teluk Intan
117	T117	40	4.07327291622259	101.095262983883	Majlis Perbandaran Teluk Intan
118	T118	40	4.07302163740045	101.095337675064	Majlis Perbandaran Teluk Intan
119	T119	40	4.07269067555271	101.095303891907	Majlis Perbandaran Teluk Intan
120	T120	40	4.07236080226582	101.095287303191	Majlis Perbandaran Teluk Intan
121	T121	40	4.07202367281227	101.095258143127	Majlis Perbandaran Teluk Intan
122	T122	40	4.07167367514704	101.095242906882	Majlis Perbandaran Teluk Intan
123	T123	40	4.07133511762108	101.09522989996	Majlis Perbandaran Teluk Intan
124	T124	40	4.07099188989133	101.09520494937	Majlis Perbandaran Teluk Intan
125	T125	40	4.07066751945953	101.095179307761	Majlis Perbandaran Teluk Intan
126	T126	40	4.07034050036129	101.095164468959	Majlis Perbandaran Teluk Intan
127	T127	40	4.06999631763773	101.095156238872	Majlis Perbandaran Teluk Intan
128	T128	40	4.06974375015678	101.095149022545	Majlis Perbandaran Teluk Intan
129	T129	40	4.06946164408126	101.095127953397	Majlis Perbandaran Teluk Intan
130	T130	40	4.06917774367877	101.095106760099	Majlis Perbandaran Teluk Intan
131	T131	40	4.06889833084992	101.095094197908	Majlis Perbandaran Teluk Intan
132	T132	40	4.0686060704631	101.095079749083	Majlis Perbandaran Teluk Intan
133	T133	40	4.06831397992927	101.095064148163	Majlis Perbandaran Teluk Intan
134	T134	40	4.06802831991514	101.095048335173	Majlis Perbandaran Teluk Intan
135	T135	40	4.06773993806932	101.095031578543	Majlis Perbandaran Teluk Intan
136	T136	40	4.0674555119435	101.095022750273	Majlis Perbandaran Teluk Intan
137	T137	40	4.06717001777217	101.095003675478	Majlis Perbandaran Teluk Intan
138	T138	40	4.0668794846644	101.094989637303	Majlis Perbandaran Teluk Intan
139	T139	40	4.06659488305331	101.094966899371	Majlis Perbandaran Teluk Intan
140	T140	40	4.06630565109609	101.094950118241	Majlis Perbandaran Teluk Intan
141	T141	40	4.06602656342543	101.0949328233	Majlis Perbandaran Teluk Intan
142	T142	40	4.06576033225141	101.094912080868	Majlis Perbandaran Teluk Intan
143	T143	40	4.06548525278198	101.09488836076	Majlis Perbandaran Teluk Intan
144	T144	40	4.06519954915936	101.094882643867	Majlis Perbandaran Teluk Intan

### 3.0 PROPOSED NEW POLE

Proposed New Pole Coordinate					
No.	Pole Number	Distance (m)	Latitude	Longitude	Local Authority
145	T145	40	4.0649043702334	101.094875821958	Majlis Perbandaran Teluk Intan
146	T146	40	4.06469334627656	101.094879976779	Majlis Perbandaran Teluk Intan
147	T147	40	4.06449912171237	101.094865576425	Majlis Perbandaran Teluk Intan
148	T148	40	4.06422227112958	101.094852269883	Majlis Perbandaran Teluk Intan
149	T149	40	4.06394966959205	101.094844719042	Majlis Perbandaran Teluk Intan
150	T150	40	4.06367836856523	101.094831222782	Majlis Perbandaran Teluk Intan
151	T151	40	4.06340345035115	101.094800605822	Majlis Perbandaran Teluk Intan
152	T152	40	4.06308875467224	101.094794771105	Majlis Perbandaran Teluk Intan
153	T153	40	4.06277749783136	101.094781006557	Majlis Perbandaran Teluk Intan
154	T154	40	4.06246619834574	101.094769079509	Majlis Perbandaran Teluk Intan
155	T155	40	4.06214045344974	101.094759306107	Majlis Perbandaran Teluk Intan
156	T156	40	4.06182558521341	101.094742633691	Majlis Perbandaran Teluk Intan
157	T157	40	4.0615080313146	101.094734651199	Majlis Perbandaran Teluk Intan
158	T158	40	4.06118561594469	101.094716171446	Majlis Perbandaran Teluk Intan
159	T159	40	4.06086158106827	101.09469842095	Majlis Perbandaran Teluk Intan
160	T160	40	4.0605449227838	101.094683025447	Majlis Perbandaran Teluk Intan
161	T161	40	4.06023991896798	101.094673485492	Majlis Perbandaran Teluk Intan
162	T162	40	4.0599268562759	101.094664020515	Majlis Perbandaran Teluk Intan
163	T163	40	4.05961002245295	101.09465554162	Majlis Perbandaran Teluk Intan
164	T164	40	4.05929300769567	101.094629931399	Majlis Perbandaran Teluk Intan
165	T165	40	4.05908828940956	101.094593135857	Majlis Perbandaran Teluk Intan
166	T166	40	4.06872987663307	101.074226585394	JKR Hilir Perak
167	T167	40	4.06863893654366	101.074016640875	JKR Hilir Perak
168	T168	40	4.06855777073448	101.073795230451	JKR Hilir Perak
169	T169	40	4.06847456155176	101.073584545995	JKR Hilir Perak
170	T170	40	4.06838655611317	101.073374289697	JKR Hilir Perak
171	T171	40	4.06831700155313	101.073164725974	JKR Hilir Perak
172	T172	40	4.06820470983542	101.07286119513	JKR Hilir Perak
173	T173	40	4.06808503425675	101.072560688972	JKR Hilir Perak
174	T174	40	4.06797580851553	101.072249262499	JKR Hilir Perak
175	T175	40	4.06787123959049	101.07193915036	JKR Hilir Perak
176	T176	40	4.06776581636166	101.071630497465	JKR Hilir Perak
177	T177	40	4.06764398367406	101.071325263795	JKR Hilir Perak

### 3.0 PROPOSED NEW POLE

Proposed New Pole Coordinate					
No.	Pole Number	Distance (m)	Latitude	Longitude	Local Authority
178	T178	40	4.06753048175718	101.071015379831	JKR Hilir Perak
179	T179	40	4.06740859438589	101.070714972539	JKR Hilir Perak
180	T180	40	4.06729138214878	101.070416183712	JKR Hilir Perak
181	T181	40	4.06718936910339	101.070105767424	JKR Hilir Perak
182	T182	40	4.06706209373002	101.069800209641	JKR Hilir Perak
183	T183	40	4.06694272072883	101.069495452995	JKR Hilir Perak
184	T184	40	4.06683034524613	101.069183394416	JKR Hilir Perak
185	T185	40	4.06672579435097	101.068876881347	JKR Hilir Perak
186	T186	40	4.06660850272981	101.068576145946	JKR Hilir Perak
187	T187	40	4.06649563098785	101.068276319081	JKR Hilir Perak
188	T188	40	4.06638491684671	101.067964856507	JKR Hilir Perak
189	T189	40	4.06626489289417	101.067652906311	JKR Hilir Perak
190	T190	40	4.0660898057074	101.067357272472	JKR Hilir Perak
191	T191	40	4.06569628320022	101.067493200765	Majlis Perbandaran Teluk Intan
192	T192	40	4.06528481552244	101.067622187765	Majlis Perbandaran Teluk Intan
193	T193	40	4.06488870767906	101.067771431404	Majlis Perbandaran Teluk Intan
194	T194	40	4.0644963183744	101.06791879052	Majlis Perbandaran Teluk Intan
195	T195	40	4.06410108111425	101.068065639184	Majlis Perbandaran Teluk Intan
196	T196	40	4.06371428595023	101.06820506171	Majlis Perbandaran Teluk Intan
197	T197	40	4.06331818362188	101.068348590223	Majlis Perbandaran Teluk Intan
198	T198	40	4.06290980883381	101.06849412234	Majlis Perbandaran Teluk Intan
199	T199	40	4.06253303692528	101.068635700446	Majlis Perbandaran Teluk Intan
200	T200	40	4.0621274425608	101.068788818999	Majlis Perbandaran Teluk Intan
201	T201	40	4.06172381299535	101.068931957236	Majlis Perbandaran Teluk Intan
202	T202	40	4.06133736962057	101.069079967207	Majlis Perbandaran Teluk Intan
203	T203	40	4.06095052197414	101.069221792005	Majlis Perbandaran Teluk Intan
204	T204	40	4.06056234224355	101.069362249183	Majlis Perbandaran Teluk Intan
205	T205	40	4.0601729558924	101.06950550141	Majlis Perbandaran Teluk Intan
206	T206	40	4.05978104023559	101.069637277847	Majlis Perbandaran Teluk Intan
207	T207	40	4.05944272230006	101.069750461546	Majlis Perbandaran Teluk Intan
208	T208	40	4.05913963664269	101.069872135652	Majlis Perbandaran Teluk Intan
209	T209	40	4.05882718610872	101.069997899368	Majlis Perbandaran Teluk Intan
210	T210	40	4.0585137889482	101.070122483306	Majlis Perbandaran Teluk Intan

### 3.0 PROPOSED NEW POLE

Proposed New Pole Coordinate					
No.	Pole Number	Distance (m)	Latitude	Longitude	Local Authority
211	T211	40	4.05820860702496	101.070237464465	Majlis Perbandaran Teluk Intan
212	T212	40	4.05789072140699	101.070352588113	Majlis Perbandaran Teluk Intan
213	T213	40	4.05758441348831	101.070469037136	Majlis Perbandaran Teluk Intan
214	T214	40	4.05728043357493	101.070581648231	Majlis Perbandaran Teluk Intan
215	T215	40	4.05697657855767	101.070694916497	Majlis Perbandaran Teluk Intan
216	T216	40	4.05667271592687	101.070807587944	Majlis Perbandaran Teluk Intan
217	T217	40	4.05636414570838	101.070915725956	Majlis Perbandaran Teluk Intan
218	T218	40	4.05597240303811	101.071052861233	Majlis Perbandaran Teluk Intan
219	T219	40	4.055584770419	101.071192879882	Majlis Perbandaran Teluk Intan
220	T220	40	4.05538530725211	101.071283994064	Majlis Perbandaran Teluk Intan
221	T221	40	4.06601161542004	101.06700003718	JKR Hilir Perak
222	T222	40	4.06587644440652	101.06664923659	JKR Hilir Perak
223	T223	40	4.0657495124165	101.066298964418	JKR Hilir Perak
224	T224	40	4.06562306248943	101.065945966363	JKR Hilir Perak
225	T225	40	4.06549430126211	101.065597998572	JKR Hilir Perak
226	T226	40	4.06537420748009	101.065249459045	JKR Hilir Perak
227	T227	40	4.06522754438978	101.064900105559	JKR Hilir Perak
228	T228	40	4.06510266679399	101.064542119794	JKR Hilir Perak
229	T229	40	4.06496727794575	101.064196270424	JKR Hilir Perak
230	T230	40	4.06480031118913	101.063854492316	JKR Hilir Perak
231	T231	40	4.06476387612023	101.063723917995	JKR Hilir Perak
232	T232	40	4.06451381274378	101.063818813819	Majlis Perbandaran Teluk Intan
233	T233	40	4.06418812689931	101.063965516208	Majlis Perbandaran Teluk Intan
234	T234	40	4.06386406342319	101.064091099509	Majlis Perbandaran Teluk Intan
235	T235	40	4.0635252964523	101.064206570339	Majlis Perbandaran Teluk Intan
236	T236	40	4.0632052816195	101.064325751477	Majlis Perbandaran Teluk Intan
237	T237	40	4.06288776526833	101.064446725961	Majlis Perbandaran Teluk Intan
238	T238	40	4.06256706101039	101.06456993612	Majlis Perbandaran Teluk Intan
239	T239	40	4.06224089792936	101.064677528961	Majlis Perbandaran Teluk Intan
240	T240	40	4.0618843579285	101.064801601869	Majlis Perbandaran Teluk Intan
241	T241	40	4.06152938698096	101.064944218951	Majlis Perbandaran Teluk Intan
242	T242	40	4.06115994166784	101.065080121946	Majlis Perbandaran Teluk Intan
243	T243	40	4.06080880675573	101.065217762947	Majlis Perbandaran Teluk Intan

### 3.0 PROPOSED NEW POLE

Proposed New Pole Coordinate					
No.	Pole Number	Distance (m)	Latitude	Longitude	Local Authority
244	T244	40	4.06045669750202	101.065341884212	Majlis Perbandaran Teluk Intan
245	T245	40	4.06011841730788	101.065466725948	Majlis Perbandaran Teluk Intan
246	T246	40	4.0597736271373	101.065600556505	Majlis Perbandaran Teluk Intan
247	T247	40	4.05941853657479	101.065737165915	Majlis Perbandaran Teluk Intan
248	T248	40	4.05904656318363	101.065874161099	Majlis Perbandaran Teluk Intan
249	T249	40	4.05868957409507	101.06600186912	Majlis Perbandaran Teluk Intan
250	T250	40	4.05833669476927	101.066117868942	Majlis Perbandaran Teluk Intan
251	T251	40	4.05798979627779	101.066246763194	Majlis Perbandaran Teluk Intan
252	T252	40	4.05763531170426	101.066376368007	Majlis Perbandaran Teluk Intan
253	T253	40	4.05729267945458	101.066503182653	Majlis Perbandaran Teluk Intan
254	T254	40	4.05693745490643	101.066639353519	Majlis Perbandaran Teluk Intan
255	T255	40	4.05657898613128	101.066777058188	Majlis Perbandaran Teluk Intan
256	T256	40	4.05622778252881	101.066906990144	Majlis Perbandaran Teluk Intan
257	T257	40	4.05587423407908	101.067031601098	Majlis Perbandaran Teluk Intan
258	T258	40	4.05561125618334	101.067046590811	Majlis Perbandaran Teluk Intan
259	T259	40	4.06465957895335	101.063357162735	JKR Hilir Perak
260	T260	40	4.06452261625238	101.062999968425	JKR Hilir Perak
261	T261	40	4.06442760769086	101.062732163018	JKR Hilir Perak
262	T262	40	4.06433069224599	101.062460855303	JKR Hilir Perak
263	T263	40	4.06423776471114	101.062185564119	JKR Hilir Perak
264	T264	40	4.06412497645998	101.06192345726	JKR Hilir Perak
265	T265	40	4.06403113092749	101.061648523318	JKR Hilir Perak
266	T266	40	4.06393436394033	101.061369018811	JKR Hilir Perak
267	T267	40	4.06382461677706	101.061103392181	JKR Hilir Perak
268	T268	40	4.06372964374622	101.060829777813	JKR Hilir Perak
269	T269	40	4.06363970326349	101.060548983116	JKR Hilir Perak
270	T270	40	4.06350462599378	101.060232454864	JKR Hilir Perak
271	T271	40	4.06348386744367	101.060183290655	JKR Hilir Perak
272	T272	40	4.06317587643101	101.060306652587	Majlis Perbandaran Teluk Intan
273	T273	40	4.06294985250798	101.060312490461	Majlis Perbandaran Teluk Intan
274	T274	40	4.06266092436117	101.060453036904	Majlis Perbandaran Teluk Intan
275	T275	40	4.06234721206468	101.060568621955	Majlis Perbandaran Teluk Intan
276	T276	40	4.06203604285713	101.060689155769	Majlis Perbandaran Teluk Intan

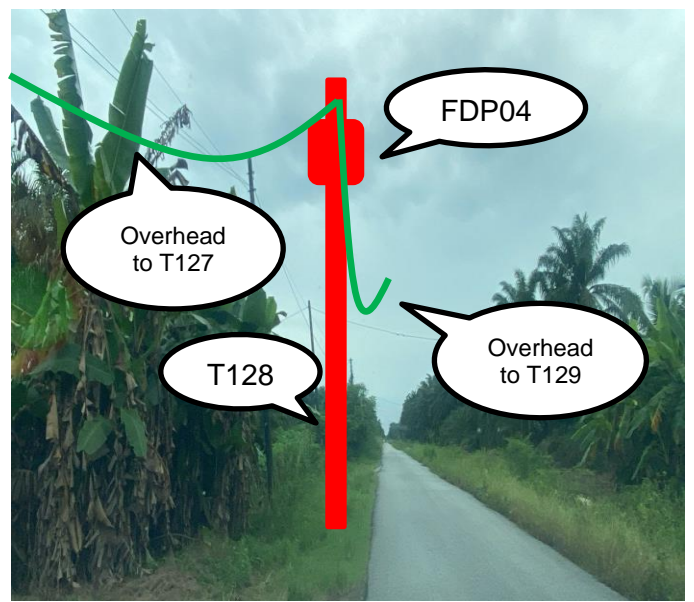
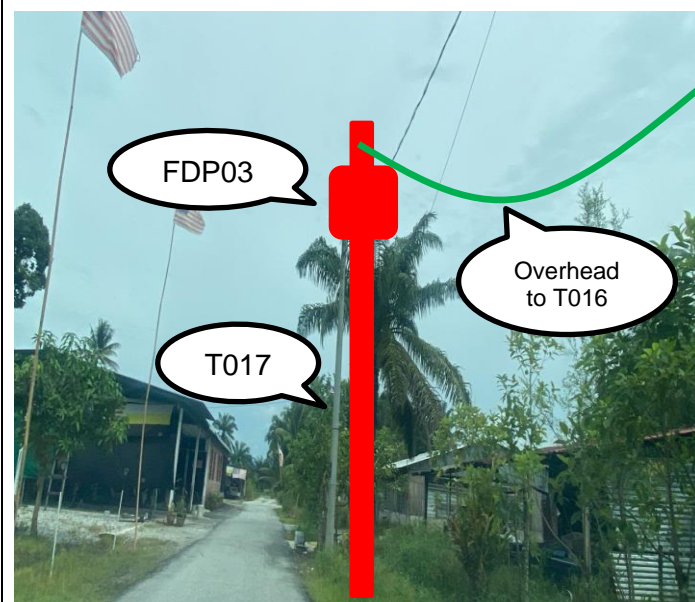
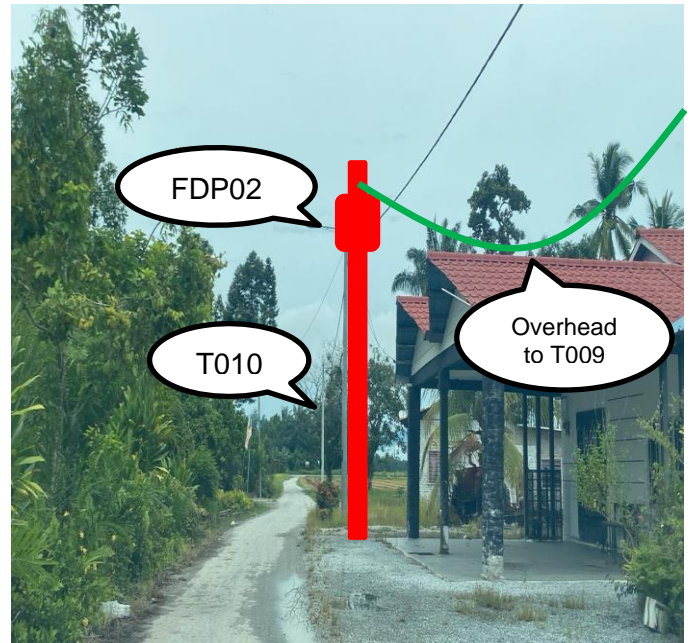
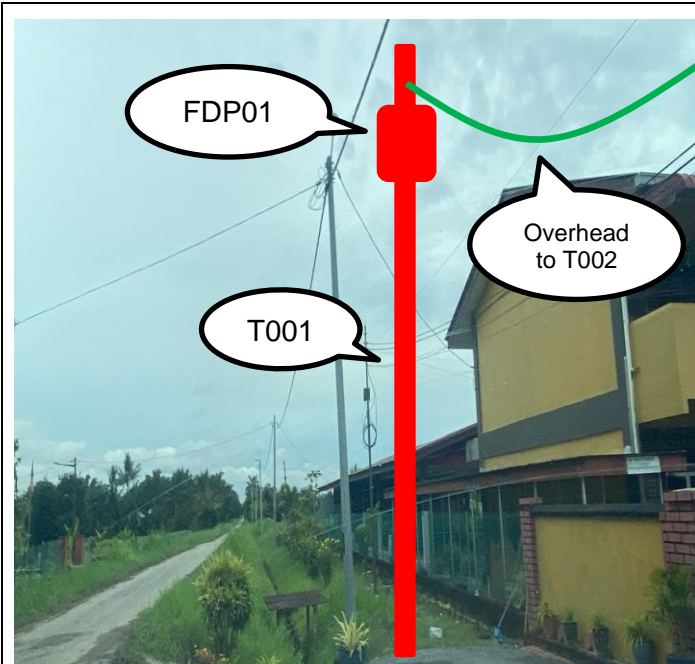
### 3.0 PROPOSED NEW POLE

Proposed New Pole Coordinate					
No.	Pole Number	Distance (m)	Latitude	Longitude	Local Authority
277	T277	40	4.06173019057936	101.060805043423	Majlis Perbandaran Teluk Intan
278	T278	40	4.06142399896247	101.060916238694	Majlis Perbandaran Teluk Intan
279	T279	40	4.06111643754349	101.061036624406	Majlis Perbandaran Teluk Intan
280	T280	40	4.06080312708639	101.061148205806	Majlis Perbandaran Teluk Intan
281	T281	40	4.06050581069617	101.061256739732	Majlis Perbandaran Teluk Intan
282	T282	40	4.0602138954545	101.061374075274	Majlis Perbandaran Teluk Intan
283	T283	40	4.05991658449238	101.061487104432	Majlis Perbandaran Teluk Intan
284	T284	40	4.05961653871153	101.061592248849	Majlis Perbandaran Teluk Intan
285	T285	40	4.05931880657696	101.061706030668	Majlis Perbandaran Teluk Intan
286	T286	40	4.05903138390457	101.061820680372	Majlis Perbandaran Teluk Intan
287	T287	40	4.05872665667539	101.061934971532	Majlis Perbandaran Teluk Intan
288	T288	40	4.05841896250014	101.062043125851	Majlis Perbandaran Teluk Intan
289	T289	40	4.05811268187887	101.0621515067	Majlis Perbandaran Teluk Intan
290	T290	40	4.05781869700149	101.062265763069	Majlis Perbandaran Teluk Intan
291	T291	40	4.05751659007233	101.062379824143	Majlis Perbandaran Teluk Intan
292	T292	40	4.05722797194037	101.062489681955	Majlis Perbandaran Teluk Intan
293	T293	40	4.05693789965815	101.062599762221	Majlis Perbandaran Teluk Intan
294	T294	40	4.05664030651757	101.062706329688	Majlis Perbandaran Teluk Intan
295	T295	40	4.05635385587625	101.062815077297	Majlis Perbandaran Teluk Intan
296	T296	40	4.05606889741874	101.062919083624	Majlis Perbandaran Teluk Intan
297	T297	40	4.05578342858962	101.063023211266	Majlis Perbandaran Teluk Intan
298	T298	40	4.05548897331776	101.063125249914	Majlis Perbandaran Teluk Intan
299	T299	40	4.05518957888831	101.063244249935	Majlis Perbandaran Teluk Intan
300	T300	40	4.05490088544457	101.063351834066	Majlis Perbandaran Teluk Intan
301	T301	40	4.05461364514112	101.063460934984	Majlis Perbandaran Teluk Intan
302	T302	40	4.05432404591703	101.063570525593	Majlis Perbandaran Teluk Intan
303	T303	40	4.05403367549952	101.063669260008	Majlis Perbandaran Teluk Intan
304	T304	40	4.05374719887331	101.063777990858	Majlis Perbandaran Teluk Intan
305	T305	40	4.05345391855315	101.063883252138	Majlis Perbandaran Teluk Intan
306	T306	40	4.05315457385633	101.063986645542	Majlis Perbandaran Teluk Intan
307	T307	40	4.05285842840846	101.064088845748	Majlis Perbandaran Teluk Intan
308	T308	40	4.05257080224741	101.064195640002	Majlis Perbandaran Teluk Intan
309	T309	40	4.05228556655555	101.064305149684	Majlis Perbandaran Teluk Intan

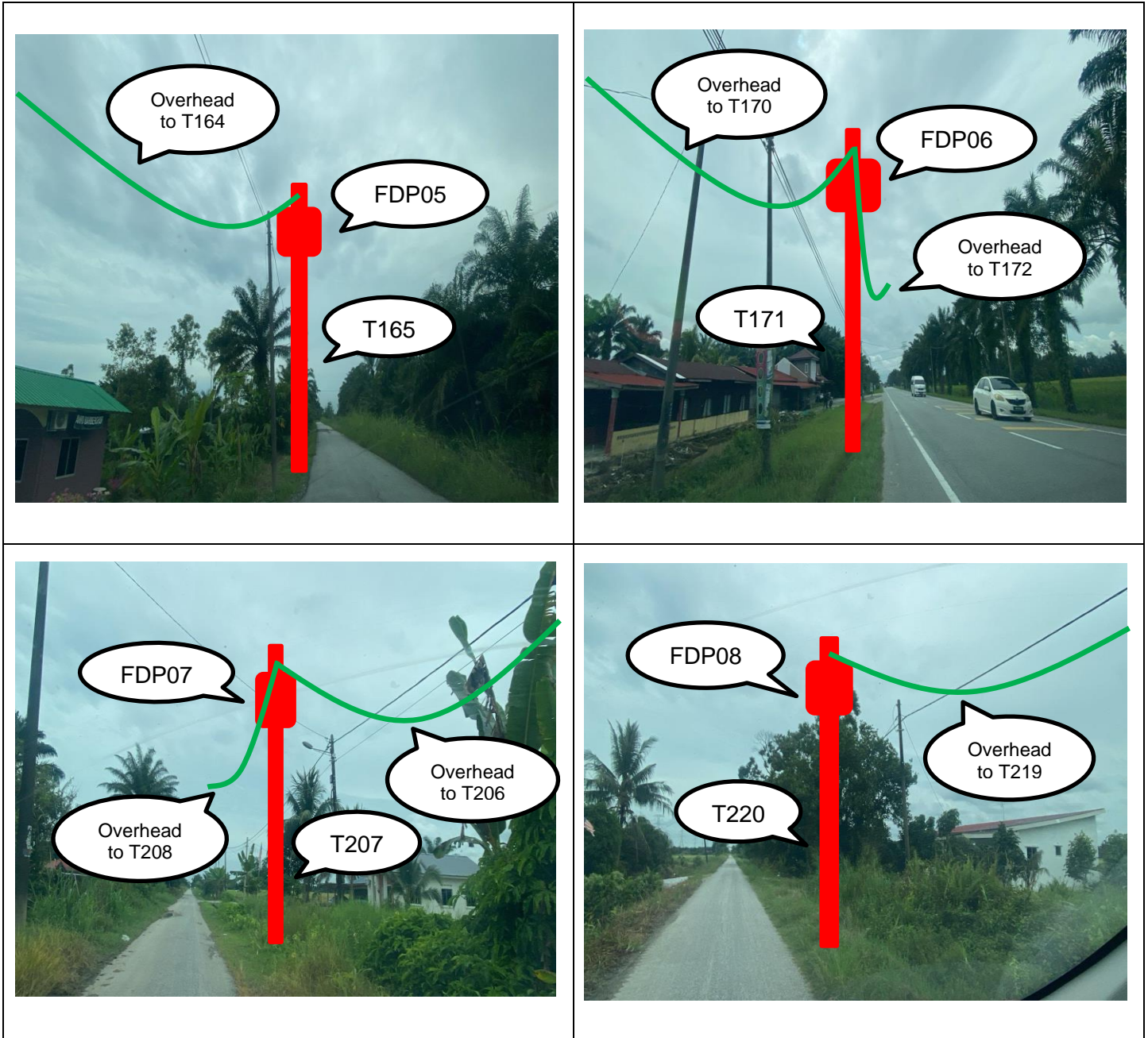
### 3.0 PROPOSED NEW POLE

Proposed New Pole Coordinate					
No.	Pole Number	Distance (m)	Latitude	Longitude	Local Authority
310	T310	40	4.05199128416066	101.06441053491	Majlis Perbandaran Teluk Intan
311	T311	40	4.0516975712014	101.064525689125	Majlis Perbandaran Teluk Intan
312	T312	40	4.05140771497265	101.064630349559	Majlis Perbandaran Teluk Intan
313	T313	40	4.05111734374762	101.064729711573	Majlis Perbandaran Teluk Intan
314	T314	40	4.05082576958592	101.064842179856	Majlis Perbandaran Teluk Intan
315	T315	40	4.05052759306185	101.064955545429	Majlis Perbandaran Teluk Intan
316	T316	40	4.05024718175511	101.06506614212	Majlis Perbandaran Teluk Intan
317	T317	40	4.04996128199817	101.065178530501	Majlis Perbandaran Teluk Intan
318	T318	40	4.04966600734721	101.065296707553	Majlis Perbandaran Teluk Intan
319	T319	40	4.04937471146309	101.065400164699	Majlis Perbandaran Teluk Intan
320	T320	40	4.04908958269953	101.065509902451	Majlis Perbandaran Teluk Intan
321	T321	40	4.04879566884432	101.065617489089	Majlis Perbandaran Teluk Intan
322	T322	40	4.04850362093223	101.065718226067	Majlis Perbandaran Teluk Intan
323	T323	40	4.04821586622505	101.065828534014	Majlis Perbandaran Teluk Intan
324	T324	40	4.04792619285059	101.065937370127	Majlis Perbandaran Teluk Intan
325	T325	40	4.04763958678818	101.066043770715	Majlis Perbandaran Teluk Intan
326	T326	40	4.0473527584382	101.066155523115	Majlis Perbandaran Teluk Intan
327	T327	40	4.04706098889801	101.066264372187	Majlis Perbandaran Teluk Intan
328	T328	40	4.04676486605179	101.066368639361	Majlis Perbandaran Teluk Intan
329	T329	40	4.04647496136643	101.066476140234	Majlis Perbandaran Teluk Intan
330	T330	40	4.04618629408269	101.066587649006	Majlis Perbandaran Teluk Intan
331	T331	40	4.04589793778523	101.066697426613	Majlis Perbandaran Teluk Intan
332	T332	40	4.0456059097925	101.066803014678	Majlis Perbandaran Teluk Intan
333	T333	40	4.04531009227477	101.066905636913	Majlis Perbandaran Teluk Intan
334	T334	40	4.04501735176232	101.067015031257	Majlis Perbandaran Teluk Intan
335	T335	40	4.04472934749538	101.067124775762	Majlis Perbandaran Teluk Intan
336	T336	40	4.04442988282876	101.067233455053	Majlis Perbandaran Teluk Intan
337	T337	40	4.04413824783791	101.06734085581	Majlis Perbandaran Teluk Intan
338	T338	40	4.04384594622038	101.067448895606	Majlis Perbandaran Teluk Intan
339	T339	40	4.0435635137571	101.06756619523	Majlis Perbandaran Teluk Intan
340	T340	40	4.04327192868047	101.067670006543	Majlis Perbandaran Teluk Intan
341	T341	40	4.04297934173373	101.067775306663	Majlis Perbandaran Teluk Intan
342	T342	40	4.04269387216067	101.067879147186	Majlis Perbandaran Teluk Intan
343	T343	40	4.042402	101.0679237	Majlis Perbandaran Teluk Intan

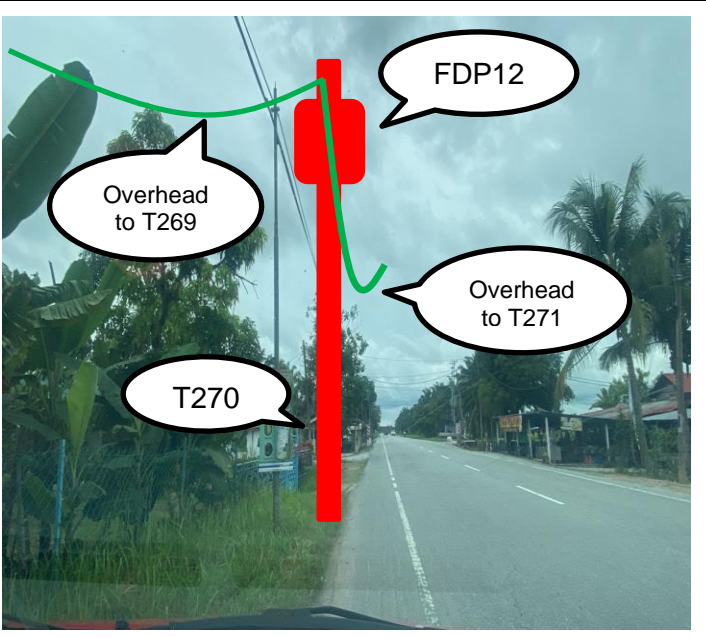
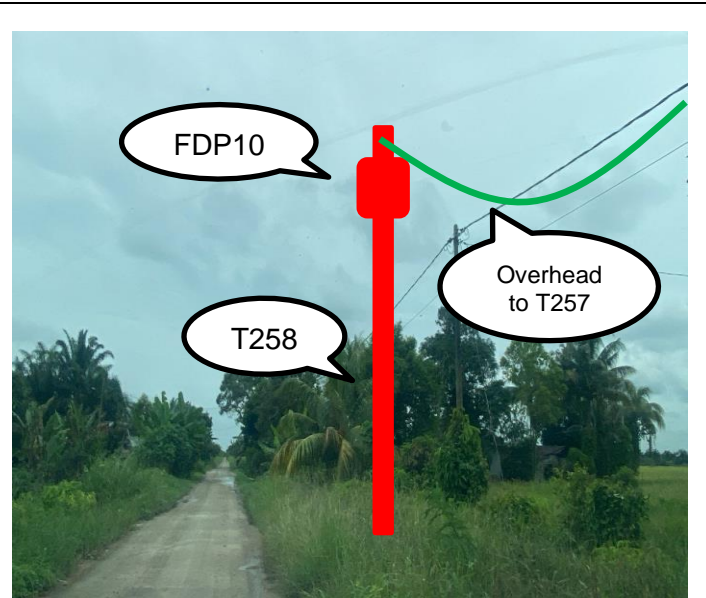
#### 4.0 SITE PHOTOS - PROPOSED NEW POLE



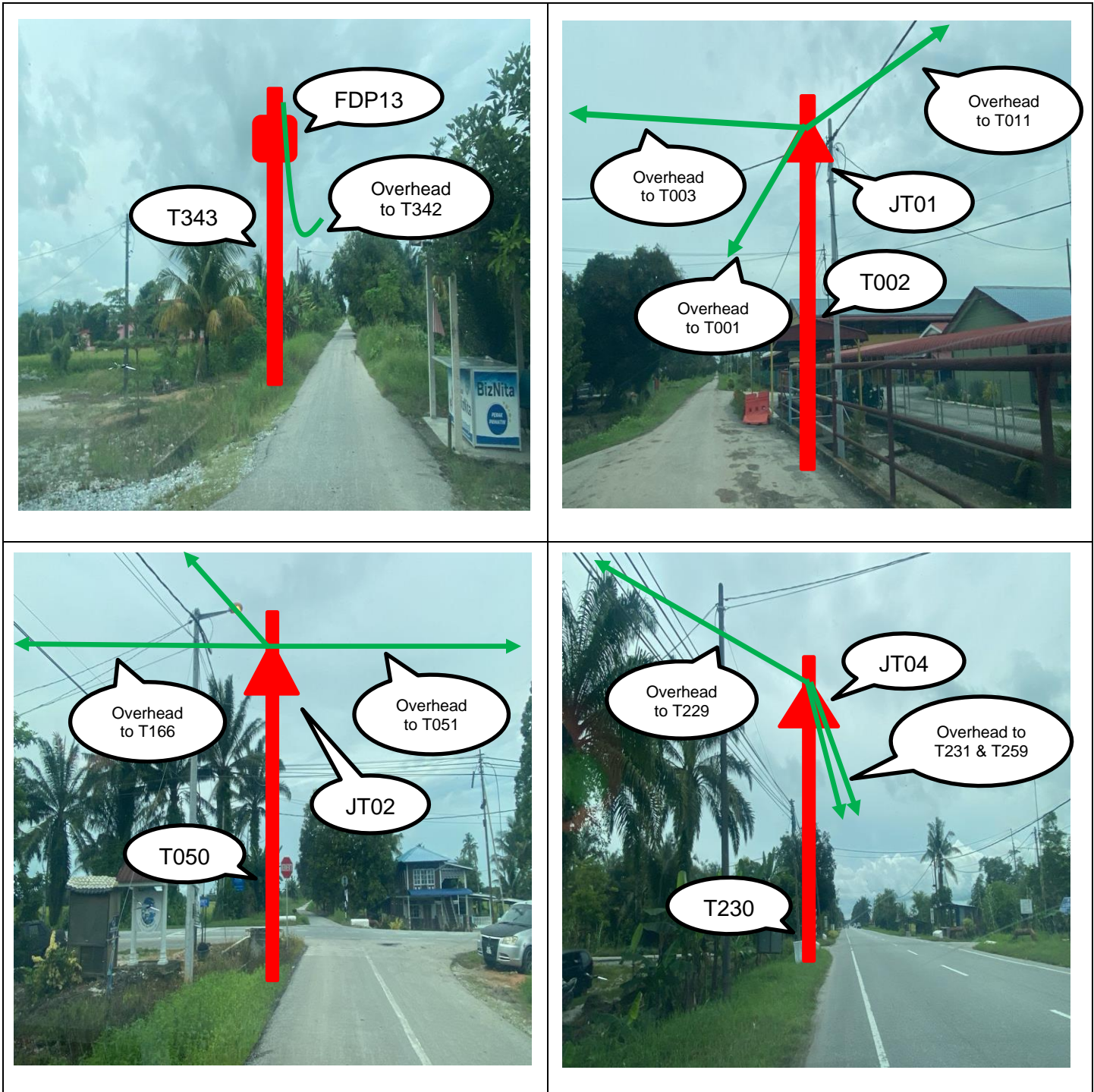
**4.0 SITE PHOTOS - PROPOSED NEW POLE**



**4.0 SITE PHOTOS - PROPOSED NEW POLE**



**4.0 SITE PHOTOS - PROPOSED NEW POLE**





PROJEK PENYEDIAAN DAN PENYELENGGARAAN POINT OF PRESENCE (POP) FASA 2: HAB INFRASTRUKTUR GENTIAN OPTIK BERHAMPIRAN DENGAN SEKOLAH, KAWASAN PERINDUSTRIAN, PREMIS KERAJAAN DAN KOMUNITI SEKITARNYA OLEH KEMENTERIAN KOMUNIKASI MALAYSIA – ZON UTARA (KKMM.400-11/17/132(1))



### 5.0 3<sup>rd</sup> PARTIES DEPENDENCIES

NO	LOCAL COUNCIL / AUTHORITY	REMARK
1	Majlis Perbandaran Teluk Intan	10,650M
2	JKR Hilir Perak	3,920M



TO PAGE 2



LEGEND

	12C FOC		Installed 1:4 splitter in FDC		INSTALLED POLE (9M)		NEW MANHOLE		TS / TB TENSION SMALL / TENSION BIG		MH NO.
	24C FOC		FDP		INSTALLED RISER		HOUSE NUMBER		EXISTING MANHOLE		EXISTING TNB POLE NO.
	48C FOC		CLOSURE		SUSPENSION BIG		EXISTING ALLO POLE		CLOSURE NO.		NEW POLE NO.
	90C FOC		NEW MANHOLE (PT)		SUSPENSION SMALL		LOOP		FDP NO.		SEE SHEET XXX
	144C FOC		INSTALLED POLE		FDC		FDP BOUNDARY		FDC NO.		SEE SHEET XXX

KEY PLAN

PROJECT OWNER



MAIN CONTRACTOR



SUB-CONTRACTOR

KNZ ENGINEERING SDN BHD  
 NO. 60 & 60A, Jalan Klebang Indah 1,  
 Medan Klebang Indah, 30100 Ipoh, Perak  
 No Tel: 019-3695071  
 Email: admin@knzengineering.com.my  
 Website: www.knzengineering.com.my

PROJECT TITLE

SEKOLAH KEBANGSAAN PERMATANG

DRAWING TITLE

TP DRAWING POP 2 AT SEKOLAH KEBANGSAAN PERMATANG

PROJECT PHASE

PROJECT PHASE 2

DESIGN BY

NABIL

DATE

19/12/2024

DRAWN BY

NABIL

SCALE

NOT TO SCALE

CHECKED BY

AZHAN HARIS

JOB NUMBER

ABA5063

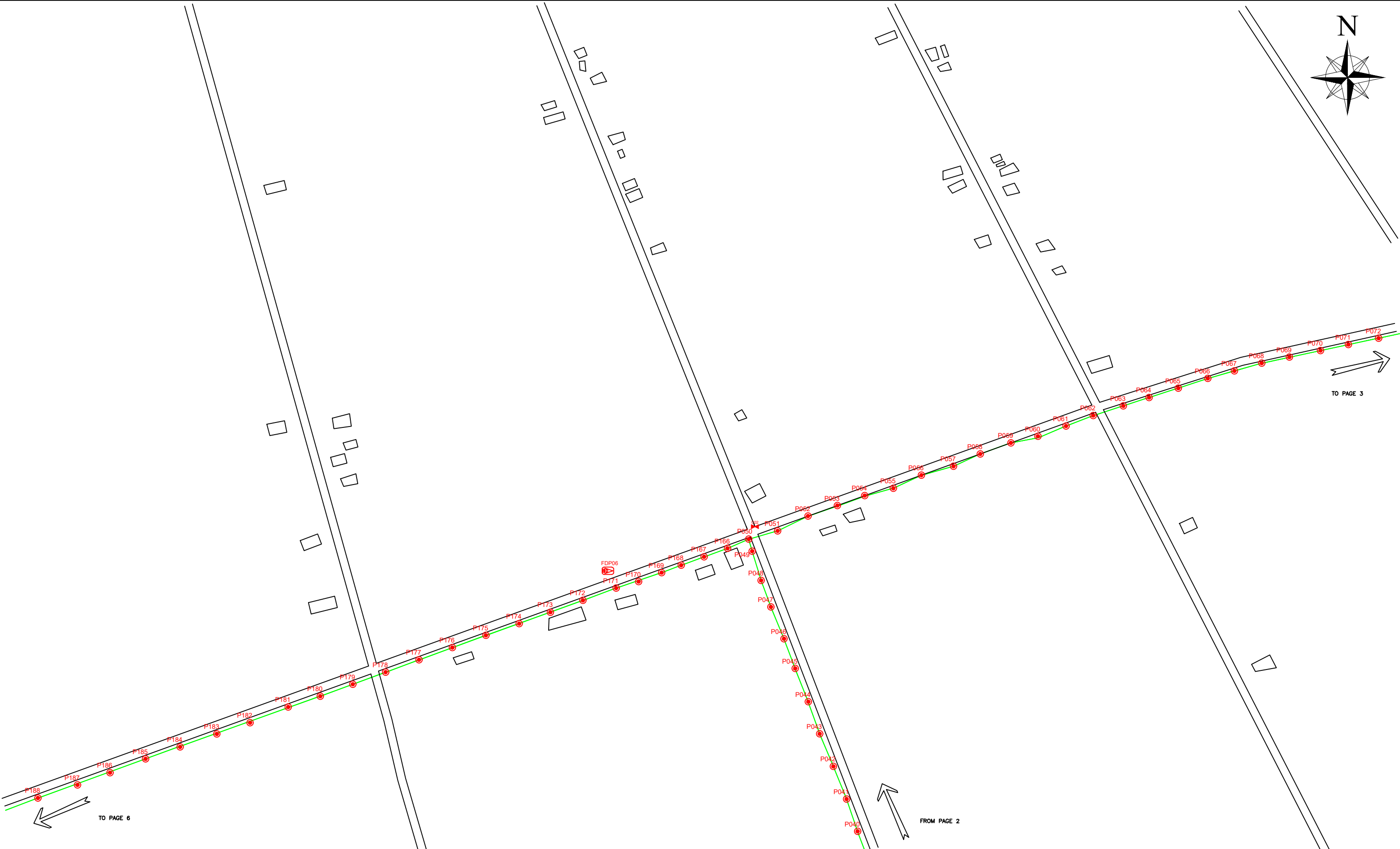
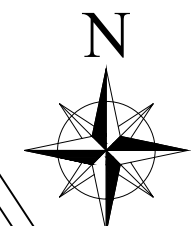
DRAWING NUMBER

ABA5063

1/7

THIS PRINT AND ITS COPYRIGHT ARE THE PROPERTY OF KNZ ENGINEERING SDN. BHD.

A3



LEGEND

	12C FOC		Installed 1:4 splitter in FDC		INSTALLED POLE (9M)		NEW MANHOLE		TS / TB TENSION SMALL / TENSION BIG		MH NO.
	24C FOC		FDP		INSTALLED RISER		HOUSE NUMBER		EXISTING MANHOLE		EXISTING TNB POLE NO.
	48C FOC		CLOSURE		SUSPENSION BIG		EXISTING ALLO POLE		CLOSURE NO.		NEW POLE NO.
	90C FOC		NEW MANHOLE (PT)		SUSPENSION SMALL		LOOP		FDP NO.		SEE A.A. IN THIS DRAWING
	144C FOC		INSTALLED POLE		FDC		FDP BOUNDARY		FDC NO.		SEE SHEET XXX

KEY PLAN

KEPENTERIAN KOMUNIKASI DAN DIGITAL

PROJECT OWNER

PRIVASAT

MAIN CONTRACTOR

KNZ Engineering

SUB-CONTRACTOR

KNZ ENGINEERING SDN BHD  
 NO. 60 & 60A, Jalan Klebang Indah 1, Medan Klebang Indah, 30100 Ipoh, Perak  
 No Tel: 019-3695071  
 Email: admin@knzengineering.com.my  
 Website: www.knzengineering.com.my

PROJECT TITLE

SEKOLAH KEBANGSAAN PERMATANG

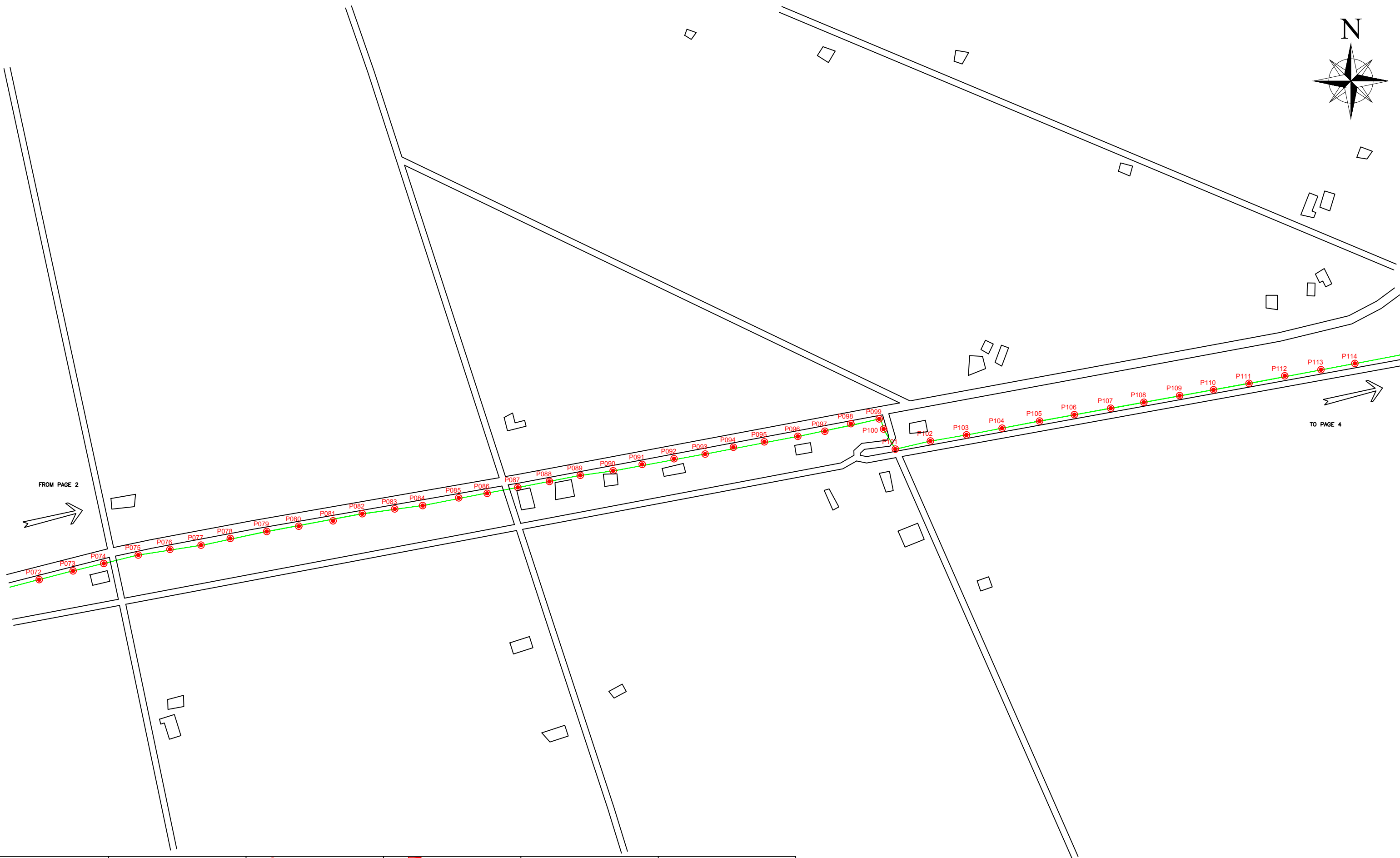
DRAWING TITLE

TP DRAWING POP 2 AT SEKOLAH KEBANGSAAN PERMATANG

PROJECT PHASE

PROJECT PHASE 2

DESIGN BY	NABIL	DATE	19/12/2024
DRAWN BY	NABIL	SCALE	NOT TO SCALE
CHECKED BY	AZHAN HARIS	JOB NUMBER	ABA5063
DRAWING NUMBER		ABA5063	
THIS PRINT AND ITS COPYRIGHT ARE THE PROPERTY OF KNZ ENGINEERING SDN. BHD.		A3	



LEGEND

	12C FOC		Installed 1:4 splitter in FDC		INSTALLED POLE (9M)		NEW MANHOLE		TS / TB	TENSION SMALL / TENSION BIG		MH NO.
	24C FOC		FDP		INSTALLED RISER		HOUSE NUMBER			EXISTING SMALL / TENSION BIG		EXISTING TNB POLE NO.
	48C FOC		CLOSURE		SUSPENSION BIG		EXISTING ALLO POLE			CLOSURE NO.		NEW POLE NO.
	90C FOC		NEW MANHOLE (PT)		SUSPENSION SMALL		LOOP			FDP NO.		SEE SHEET XXX
	144C FOC		INSTALLED POLE		FDC		FDP BOUNDARY			FDC NO.		SEE SHEET XXX

KEY PLAN

	PROJECT OWNER		MAIN CONTRACTOR		SUB-CONTRACTOR
					<p>KNZ ENGINEERING SDN BHD          NO. 60 &amp; 60A, Jalan Kiebang Indah 1, Medan Kiebang Indah, 30100 Ipoh, Perak          No Tel: 019-3695071          Email: admin@knzengineering.com.my          Website: www.knzengineering.com.my</p>

PROJECT TITLE

SEKOLAH KEBANGSAAN PERMATANG

DRAWING TITLE

TP DRAWING POP 2 AT SEKOLAH KEBANGSAAN PERMATANG

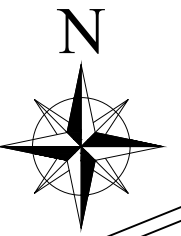
PROJECT PHASE

PROJECT PHASE 2

DESIGN BY	NABIL	DATE	19/12/2024
DRAWN BY	NABIL	SCALE	NOT TO SCALE
CHECKED BY	AZHAN HARIS	JOB NUMBER	ABA5063
DRAWING NUMBER	ABA5063		3/7
THIS PRINT AND ITS COPYRIGHT ARE THE PROPERTY OF KNZ ENGINEERING SDN. BHD.			

A3





FROM PAGE 4



LEGEND

	12C FOC		INSTALLED POLE (9M)		NEW MANHOLE		TENSION SMALL / TENSION BIG		MH NO.
	24C FOC		INSTALLED RISER		EXISTING MANHOLE		CLOSURE NO.		EXISTING TNB POLE NO.
	48C FOC		SUSPENSION BIG		EXISTING ALLO POLE		FDP NO.		NEW POLE NO.
	90C FOC		SUSPENSION SMALL		LOOP		FDC NO.		SEE SHEET XXX
	144C FOC		FDC		FDP BOUNDARY				SEE SHEET XXX

KEY PLAN

PROJECT OWNER



PROJECT OWNER



PRIVASAT

MAIN CONTRACTOR



KNZ Engineering

SUB-CONTRACTOR

KNZ ENGINEERING SDN BHD  
 NO. 60 & 60A, Jalan Klebang Indah 1,  
 Medan Klebang Indah, 30100 Ipoh, Perak  
 No Tel: 019-3695071  
 Email: admin@knzengineering.com.my  
 Website: www.knzengineering.com.my

PROJECT TITLE

SEKOLAH KEBANGSAAN PERMATANG

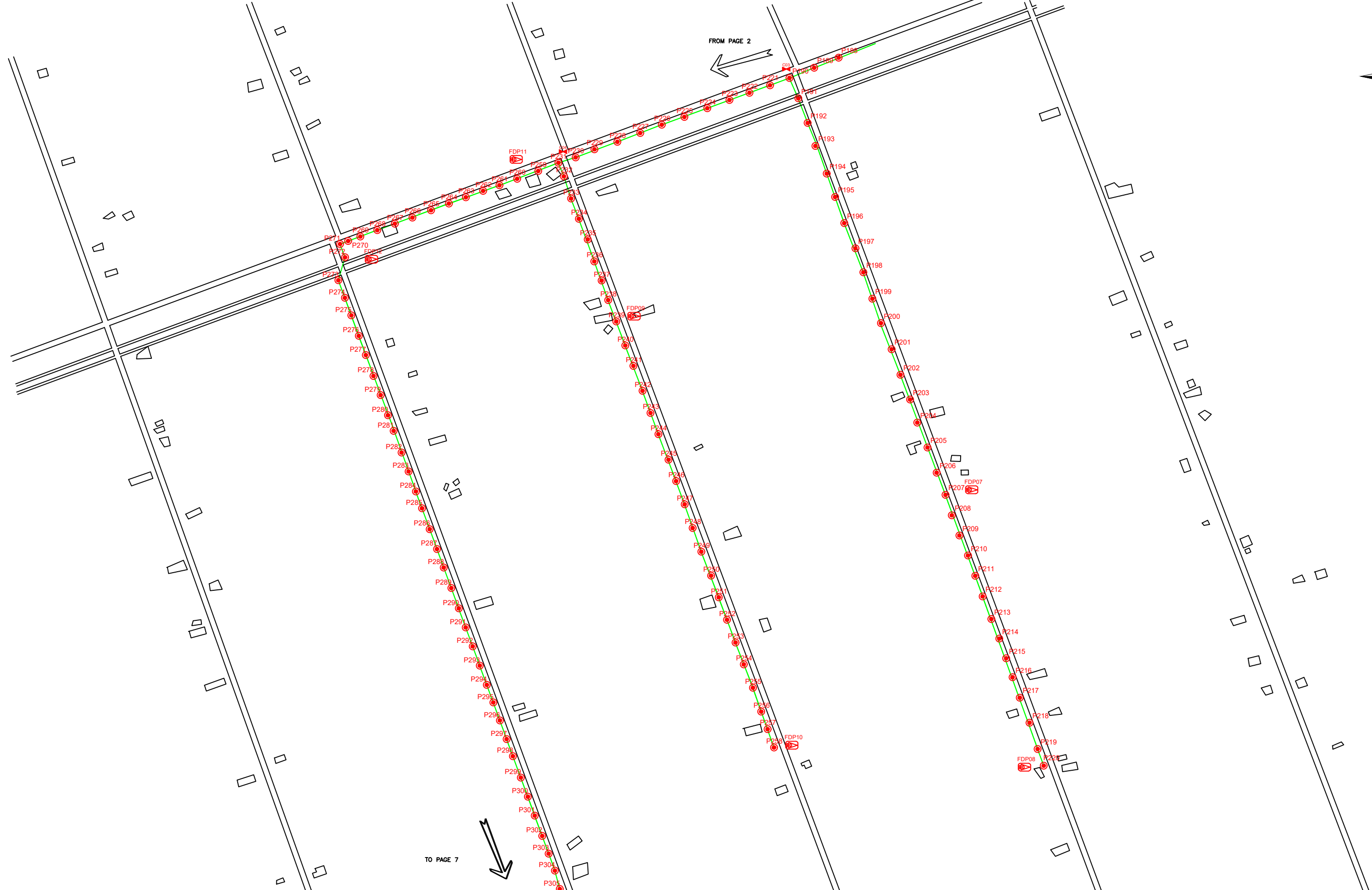
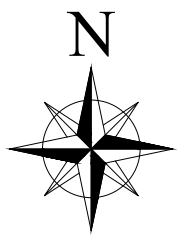
DRAWING TITLE

TP DRAWING POP 2 AT SEKOLAH KEBANGSAAN PERMATANG

PROJECT PHASE

PROJECT PHASE 2

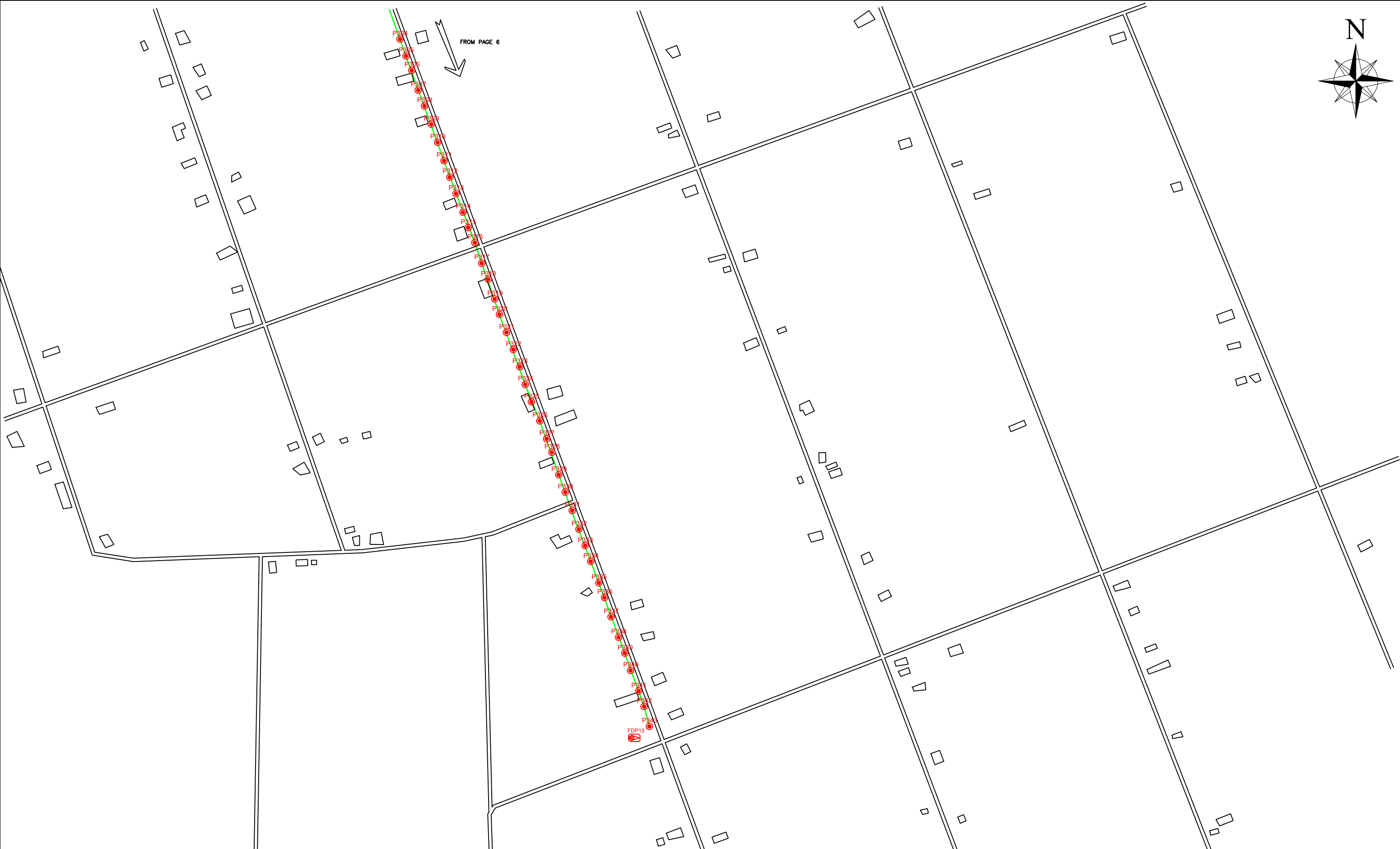
DESIGN BY	NABIL	DATE	19/12/2024
DRAWN BY	NABIL	SCALE	NOT TO SCALE
CHECKED BY	AZHAN HARIS	JOB NUMBER	ABA5063
DRAWING NUMBER		ABA5063	
THIS PRINT AND ITS COPYRIGHT ARE THE PROPERTY OF KNZ ENGINEERING SDN. BHD.		5/7	
		A3	



LEGEND	
	12C FOC
	24C FOC
	48C FOC
	90C FOC
	144C FOC
	Installed 1:4 splitter in FDC
	FDP
	CLOSURE
	NEW MANHOLE (PT)
	INSTALLED POLE
	INSTALLED POLE (9M)
	INSTALLED RISER
	SUSPENSION BIG
	SUSPENSION SMALL
	FDC
	NEW MANHOLE
	HOUSE NUMBER
	EXISTING ALLO POLE
	LOOP
	FDP BOUNDARY
	TENSION SMALL / TENSION BIG
	EXISTING MANHOLE
	CLOSURE NO.
	FDP NO.
	FDC NO.
	EXISTING TNB POLE NO.
	NEW POLE NO.

KEY PLAN	PROJECT OWNER 	MAIN CONTRACTOR 	SUB-CONTRACTOR 
			<p>KNZ ENGINEERING SDN BHD NO. 60 &amp; 60A, Jalan Klebang Indah 1, Medan Klebang Indah, 30100 Ipoh, Perak No Tel: 019-3695071 Email: admin@knzengineering.com.my Website: www.knzengineering.com.my</p>

PROJECT TITLE <b>SEKOLAH KEBANGSAAN PERMATANG</b>	DRAWING TITLE <b>TP DRAWING POP 2 AT SEKOLAH KEBANGSAAN PERMATANG</b>	DESIGN BY <b>NABIL</b>	DATE <b>19/12/2024</b>
	PROJECT PHASE <b>PROJECT PHASE 2</b>	DRAWN BY <b>NABIL</b>	SCALE <b>NOT TO SCALE</b>
		CHECKED BY <b>AZHAN HARIS</b>	JOB NUMBER <b>ABA5063</b>
		DRAWING NUMBER <b>ABA5063</b>	
		THIS PRINT AND ITS COPYRIGHT ARE THE PROPERTY OF KNZ ENGINEERING SDN. BHD.	



LEGEND	
12C FOC	Installed 1:4 splitter in FDC
24C FOC	FDP
48C FOC	CLOSURE
90C FOC	NEW MANHOLE (PT)
144C FOC	INSTALLED POLE
INSTALLED POLE (9M)	INSTALLED RISER
SUSPENSION BIG	SUSPENSION SMALL
FDC	
NEW MANHOLE	HOUSE NUMBER
EXISTING ALLO POLE	LOOP
FDP BOUNDARY	
TS / TB TENSION SMALL / TENSION BIG	EXISTING MANHOLE
CLOSURE NO.	FDP NO.
FDC NO.	
MH1 MH NO.	TKS-1 EXISTING TNB POLE NO.
P001 NEW POLE NO.	
	SEE SHEET KIK

KEY PLAN

PROJECT OWNER



MAIN CONTRACTOR




SUB-CONTRACTOR



KNZ ENGINEERING SDN BHD  
 NO. 60 & 60A, Jalan Klebang Indah 1, Medan Klebang Indah, 30100 Ipoh, Perak  
 No Tel: 019-3695071  
 Email: admin@knzengineering.com.my  
 Website: www.knzengineering.com.my

PROJECT TITLE

SEKOLAH KEBANGSAAN PERMATANG

DRAWING TITLE

TP DRAWING POP 2 AT SEKOLAH KEBANGSAAN PERMATANG

PROJECT PHASE

PROJECT PHASE 2

DESIGN BY	NABIL	DATE	19/12/2024
DRAWN BY	NABIL	SCALE	NOT TO SCALE
CHECKED BY	AZHAN HARIS	JOB NUMBER	ABA5063
DRAWING NUMBER		ABA5063	
THIS PRINT AND ITS COPYRIGHT ARE THE PROPERTY OF KNZ ENGINEERING SDN. BHD.		7/7	
		A3	