

TECHNICAL PROPOSAL

POP2 AEEA001 SEKOLAH MENENGAH KEBANGSAAN DATO ZULKIFLI (D-SIDE)

Company Name	:	STEADCOM SDN BHD
Company Address	:	11-3, Jalan Puteri 2/6, Bandar Puteri, 47100 Puchong, Selangor
Prepared By	:	Fariz Aizat
Date	:	21/11/2024



POINT A

POINT B

Starting Point

Site / Boundary Name	:	SEK MEN KEB DATO ZUKKIFLI MUHAMMAD
Address	:	Jalan Besar, Taman Sri Indah, 35800 Slim River, Perak.
District	:	Slim River
Postcode	:	35800
State	:	Perak
GPS Coordinate	:	3.836445, 101.398792
LRD	:	A

End Point

Site / Boundary Name	:	SEK MEN KEB DATO ZUKKIFLI MUHAMMAD
Address	:	Jalan Limau Manis, Taman Sri Indah, 35800 Slim River, Perak.
District	:	Slim River
Postcode	:	35800
State	:	Perak
GPS Coordinate	:	3.840703, 101.395566
LRD	:	B

Work Summary

No	Proposed Distance and Method	Unit	Qty
1	Horizontal Directional Drilling (HDD)	m	0
2	Carriage Way Open trench (CW)	m	0
3	Grass Verge Open Trenching (GV)	m	0
4	Micro trenching (MT)	m	0
	Total		0

	Other Information	Unit	Qty
1	Proposed Manhole	EA	0
2	Proposed Pole	EA	67
3	Joint Closure	EA	2
4	Estimated time required for completion	days	30

Local Authority Summary

1. Daerah Tanjong Malim

Bil	Items	Owner	Quantity	Distance(m)
1	HDD	JKR	-	-
		Majlis	-	-
		Estate / Private Land	-	-
2	New Pole	JKR	-	-
		Majlis	67PCS	2025m
		Estate / Private Land	-	-
3	Existing TNB Pole	JKR	-	-
		Majlis	-	-
		Estate / Private Land	-	-
Total				2025m

Site Plan – KMZ (Overview site area)

Proposed FDP and Closure



Proposed New Pole



Site Plan – KMZ Routing (All Local Authority)

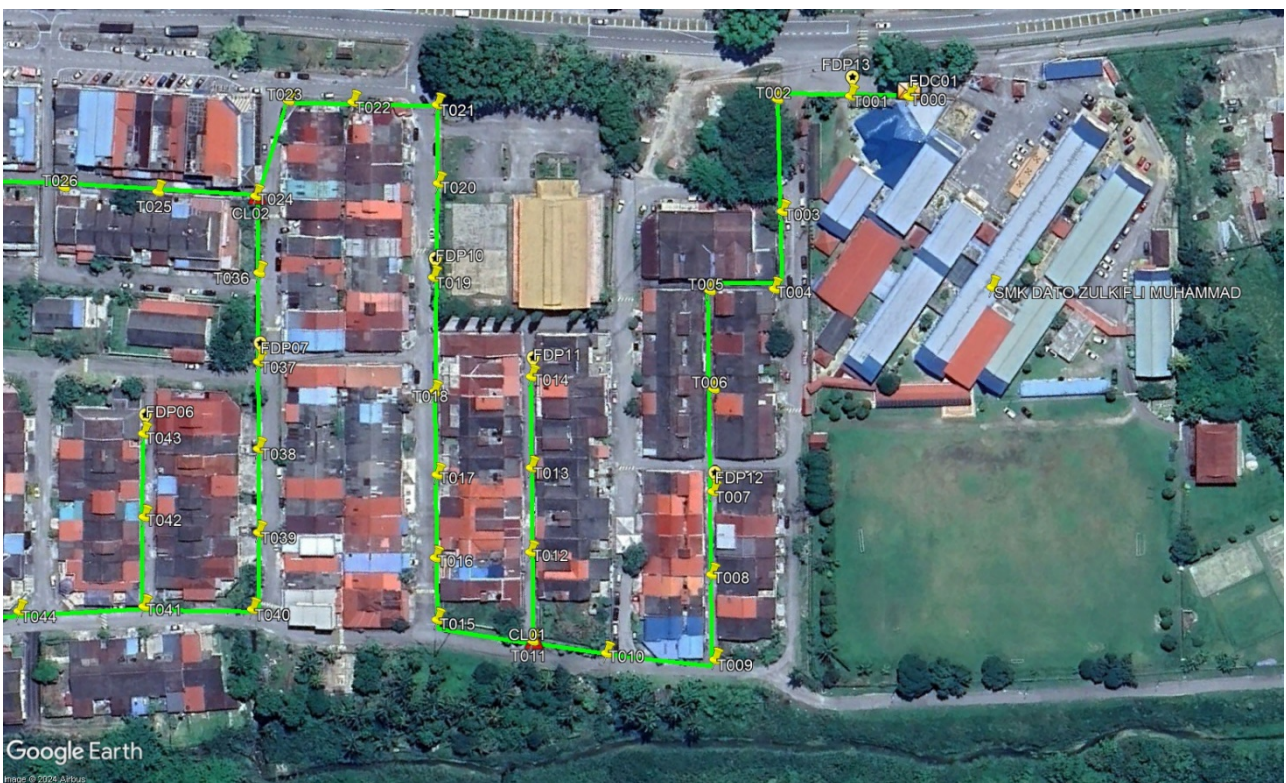


Green Colour – JKR

Red Colour – Majlis Daerah Tanjong Malim

Site Plan – KMZ Routing (All site area)

Route 1



Route 1.1



Route 1.2

Site Plan – KMZ Routing (Proposed new Pole)



Proposed New Pole Lat & Long Table

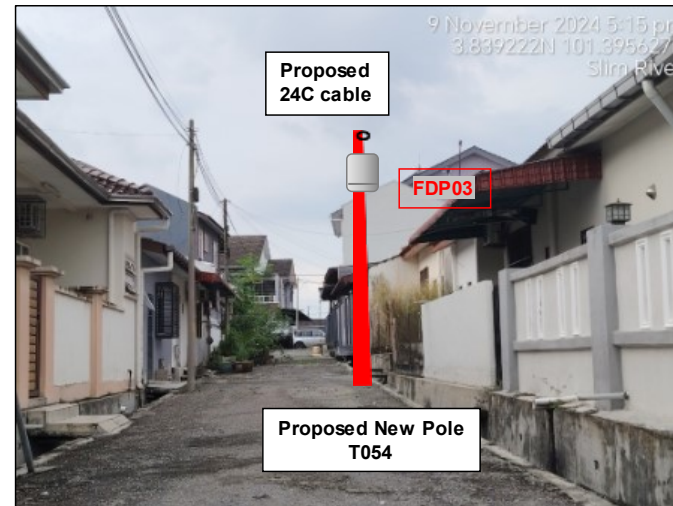
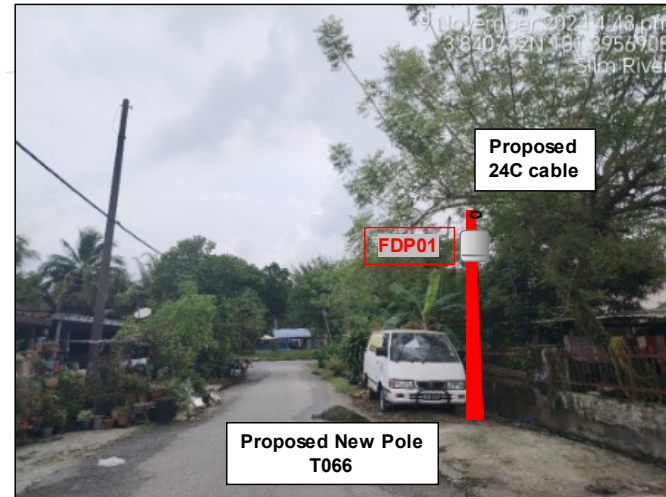
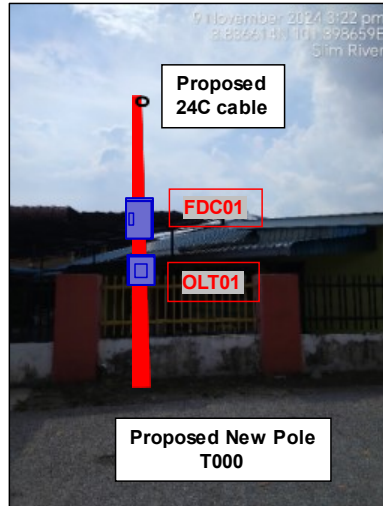
No.	Label	Pole & Manhole ID	Latitude	Longitude	Local Authority
1	OLT / FDC	T000	3.836628	101.398615	MAJLIS DAERAH TANJONG MALIM
2	FDP01	T066	3.840785	101.395778	MAJLIS DAERAH TANJONG MALIM
3	FDP02	T058	3.840127	101.395658	MAJLIS DAERAH TANJONG MALIM
4	FDP03	T054	3.839457	101.395474	MAJLIS DAERAH TANJONG MALIM
5	FDP04	T051	3.839146	101.39612	MAJLIS DAERAH TANJONG MALIM
6	FDP05	T047	3.838645	101.396377	MAJLIS DAERAH TANJONG MALIM
7	FDP06	T043	3.838122	101.396635	MAJLIS DAERAH TANJONG MALIM
8	FDP07	T037	3.837928	101.396987	MAJLIS DAERAH TANJONG MALIM
9	FDP08	T035	3.840399	101.396048	MAJLIS DAERAH TANJONG MALIM
10	FDP09	T028	3.839144	101.396928	MAJLIS DAERAH TANJONG MALIM
11	FDP10	T019	3.837597	101.397459	MAJLIS DAERAH TANJONG MALIM
12	FDP11	T014	3.837201	101.397343	MAJLIS DAERAH TANJONG MALIM
13	FDP12	T007	3.836565	101.397308	MAJLIS DAERAH TANJONG MALIM
14	FDP13	T001	3.836779	101.398532	MAJLIS DAERAH TANJONG MALIM
15	CL01	T011	3.836817	101.39666	MAJLIS DAERAH TANJONG MALIM
16	CL02	T024	3.838174	101.397413	MAJLIS DAERAH TANJONG MALIM

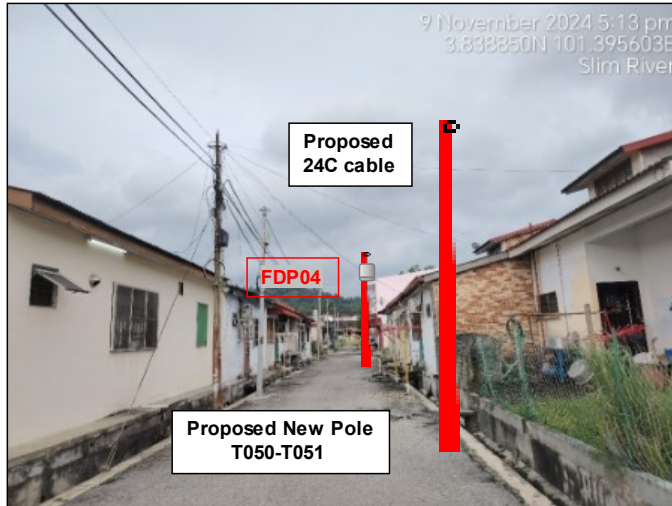
Overall Pole (Proposed New)

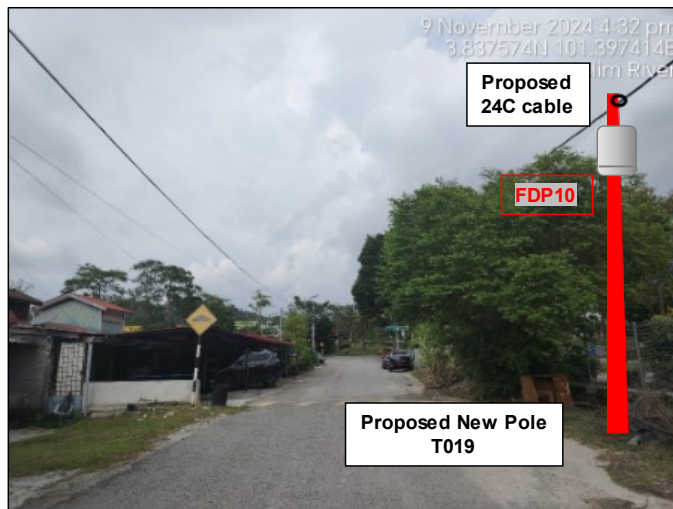
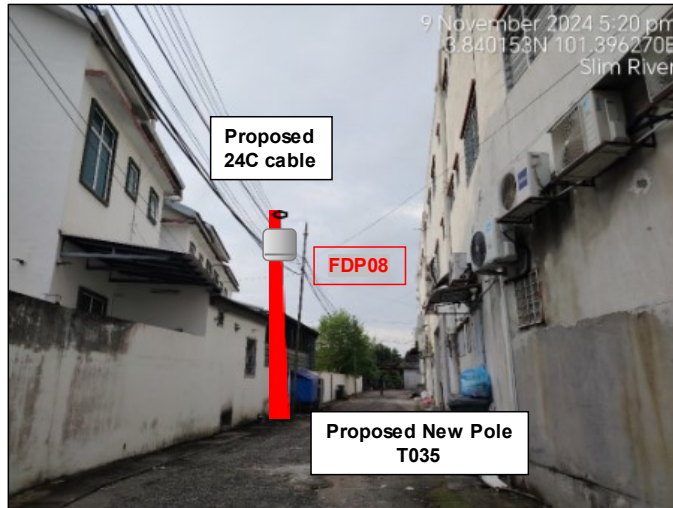
No.	Pole & Manhole ID	Distance	Latitude	Longitude	Local Authority
1	T000	0	3.836628	101.398615	MAJLIS DAERAH TANJONG MALIM
2	T001	25	3.836779	101.398532	MAJLIS DAERAH TANJONG MALIM
3	T002	30	3.836964	101.398418	MAJLIS DAERAH TANJONG MALIM
4	T003	40	3.836789	101.398134	MAJLIS DAERAH TANJONG MALIM
5	T004	30	3.836698	101.397922	MAJLIS DAERAH TANJONG MALIM
6	T005	25	3.836863	101.397824	MAJLIS DAERAH TANJONG MALIM
7	T006	30	3.836712	101.397575	MAJLIS DAERAH TANJONG MALIM
8	T007	35	3.836565	101.397308	MAJLIS DAERAH TANJONG MALIM
9	T008	30	3.836449	101.397091	MAJLIS DAERAH TANJONG MALIM
10	T009	30	3.836318	101.396875	MAJLIS DAERAH TANJONG MALIM
11	T010	35	3.836608	101.396735	MAJLIS DAERAH TANJONG MALIM
12	T011	30	3.836817	101.39666	MAJLIS DAERAH TANJONG MALIM
13	T012	30	3.83695	101.396887	MAJLIS DAERAH TANJONG MALIM
14	T013	30	3.83707	101.397107	MAJLIS DAERAH TANJONG MALIM
15	T014	30	3.837201	101.397343	MAJLIS DAERAH TANJONG MALIM
16	T015	35	3.837094	101.396577	MAJLIS DAERAH TANJONG MALIM
17	T016	25	3.837188	101.396735	MAJLIS DAERAH TANJONG MALIM
18	T017	30	3.837303	101.396953	MAJLIS DAERAH TANJONG MALIM
19	T018	35	3.83743	101.397163	MAJLIS DAERAH TANJONG MALIM
20	T019	35	3.837597	101.397459	MAJLIS DAERAH TANJONG MALIM
21	T020	35	3.83772	101.39771	MAJLIS DAERAH TANJONG MALIM
22	T021	35	3.837836	101.397912	MAJLIS DAERAH TANJONG MALIM
23	T022	30	3.838058	101.397797	MAJLIS DAERAH TANJONG MALIM
24	T023	25	3.838227	101.397707	MAJLIS DAERAH TANJONG MALIM
25	T024	35	3.838174	101.397413	MAJLIS DAERAH TANJONG MALIM
26	T025	30	3.838434	101.397283	MAJLIS DAERAH TANJONG MALIM
27	T026	30	3.838684	101.397159	MAJLIS DAERAH TANJONG MALIM
28	T027	30	3.838904	101.397063	MAJLIS DAERAH TANJONG MALIM
29	T028	30	3.839144	101.396928	MAJLIS DAERAH TANJONG MALIM
30	T029	20	3.839316	101.396899	MAJLIS DAERAH TANJONG MALIM
31	T030	30	3.839531	101.396784	MAJLIS DAERAH TANJONG MALIM
32	T031	30	3.839742	101.396665	MAJLIS DAERAH TANJONG MALIM
33	T032	25	3.839878	101.396534	MAJLIS DAERAH TANJONG MALIM
34	T033	25	3.840027	101.396369	MAJLIS DAERAH TANJONG MALIM
35	T034	25	3.840231	101.396162	MAJLIS DAERAH TANJONG MALIM
36	T035	25	3.840399	101.396048	MAJLIS DAERAH TANJONG MALIM
37	T036	30	3.838055	101.397219	MAJLIS DAERAH TANJONG MALIM
38	T037	30	3.837928	101.396987	MAJLIS DAERAH TANJONG MALIM
39	T038	30	3.837803	101.396762	MAJLIS DAERAH TANJONG MALIM
40	T039	30	3.837682	101.396545	MAJLIS DAERAH TANJONG MALIM

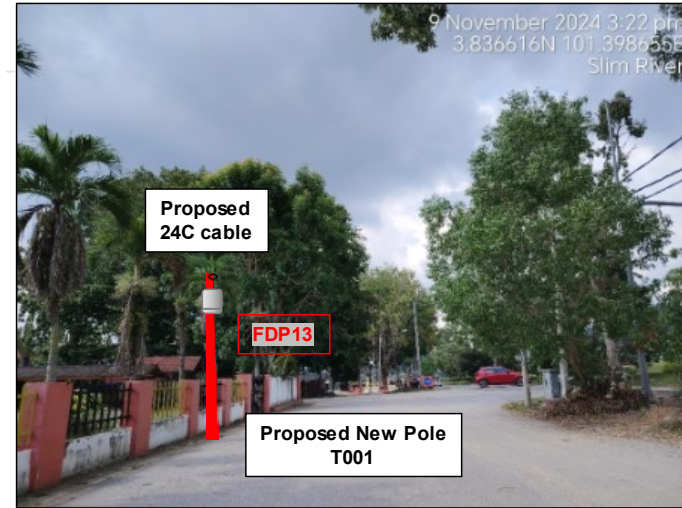
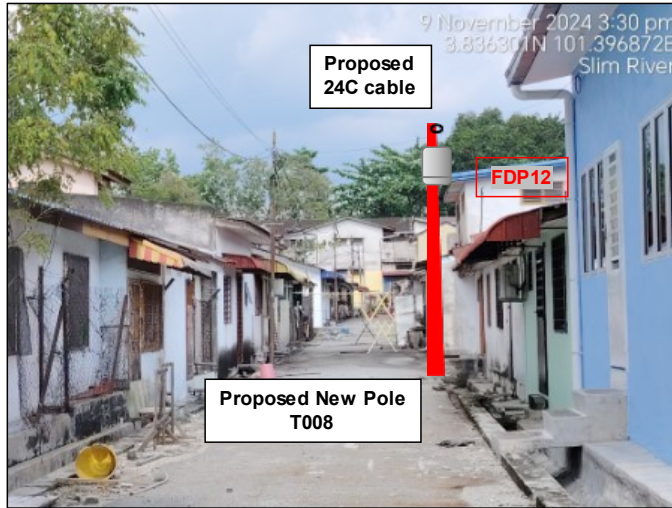
41	T040	25	3.837587	101.396337	MAJLIS DAERAH TANJONG MALIM
42	T041	35	3.837872	101.396188	MAJLIS DAERAH TANJONG MALIM
43	T042	30	3.838001	101.39642	MAJLIS DAERAH TANJONG MALIM
44	T043	30	3.838122	101.396635	MAJLIS DAERAH TANJONG MALIM
45	T044	40	3.838189	101.395995	MAJLIS DAERAH TANJONG MALIM
46	T045	30	3.838373	101.395873	MAJLIS DAERAH TANJONG MALIM
47	T046	35	3.838497	101.396107	MAJLIS DAERAH TANJONG MALIM
48	T047	35	3.838645	101.396377	MAJLIS DAERAH TANJONG MALIM
49	T048	40	3.838643	101.395714	MAJLIS DAERAH TANJONG MALIM
50	T049	25	3.838847	101.395568	MAJLIS DAERAH TANJONG MALIM
51	T050	35	3.838991	101.395852	MAJLIS DAERAH TANJONG MALIM
52	T051	35	3.839146	101.39612	MAJLIS DAERAH TANJONG MALIM
53	T052	40	3.839164	101.39539	MAJLIS DAERAH TANJONG MALIM
54	T053	30	3.839272	101.395591	MAJLIS DAERAH TANJONG MALIM
55	T054	30	3.839457	101.395474	MAJLIS DAERAH TANJONG MALIM
56	T055	25	3.83967	101.395327	MAJLIS DAERAH TANJONG MALIM
57	T056	30	3.839878	101.39521	MAJLIS DAERAH TANJONG MALIM
58	T057	30	3.840019	101.395447	MAJLIS DAERAH TANJONG MALIM
59	T058	30	3.840127	101.395658	MAJLIS DAERAH TANJONG MALIM
60	T059	30	3.839795	101.394982	MAJLIS DAERAH TANJONG MALIM
61	T060	30	3.839966	101.394818	MAJLIS DAERAH TANJONG MALIM
62	T061	30	3.84017	101.394707	MAJLIS DAERAH TANJONG MALIM
63	T062	35	3.840304	101.394953	MAJLIS DAERAH TANJONG MALIM
64	T063	30	3.840421	101.395157	MAJLIS DAERAH TANJONG MALIM
65	T064	30	3.840543	101.395364	MAJLIS DAERAH TANJONG MALIM
66	T065	30	3.840664	101.395582	MAJLIS DAERAH TANJONG MALIM
67	T066	30	3.840785	101.395778	MAJLIS DAERAH TANJONG MALIM

Site Photos – Proposed to install pole









3rd Parties Dependencies

No.	Local Council/ Authority	Remark
1	Majlis Daerah Tanjong Malim	
2		
3		
4		
5		
6		



12C FOC	Installed 1:4 / 1:8 / 1:32 splitter	●	Installed Pole (9m)	S	Suspension	67	JB3C	New Manhole (PIT)	Micro-Trenching (Meter)	MH1	MH NO.
24C FOC	2355m Installed Patch Cord	●	Installed Pole (7.5M)	T	Tension	127	C7	New Manhole(JRC7)	Temporary Infra (Meter)	TKS-1	Existing TNB Pole NO.
48C FOC	FDC	1	Installed Pole (6.7M)	⊙	Pole Ring	13	—	FDP Boundary	Loop / Coil (Meter)	P001	New Pole NO.
96C FOC	Closure	2	Existing TNB Pole	⊙	FDP with (1:8) splitter	13	—	HDD (Meter)	#	CL01	Closure NO.
144C FOC	Existing Closure	□	Installed Riser	⊙	Existing Manhole		—	Open Cut (Meter)	C01	DP1	FDP NO.

ACTUAL HOME PASS :

KEY PLAN:

PROJECT OWNER:

MAIN CONTRACTOR:

SUB-CONTRACTOR:

PROJECT TITLE:
CONTRACTOR FOR SURVEY, TECHNICAL PROPOSAL AND WAYLEAVE & PERMIT APPROVAL -POP2 PROJECT

DRAWING TITLE:
Construction Drawing AEEA001 SMK DATO ZULKIFLI MUHAMMAD
PROJECT PHASE:
POP 2

Design By :	Date :	21/11/2024
Drawn By :	Scale :	NTS
Checked By :	Job Number :	JOB/NUMBER
DRAWING NUMBER :	Sheet :	1/3
AEEA001-CD-01		Size : A3
THIS PRINT AND ITS COPYRIGHT ARE THE PROPERTY OF STEADCOM SDN BHD		



12C FOC	Installed 1:4 / 1:8 / 1:32 splitter	●	Installed Pole (9m)	s	Suspension	67	JB3C	New Manhole (PIT)	Micro-Trenching (Meter)	MH1	MH NO.
24C FOC	2355m Installed Patch Cord	●	Installed Pole (7.5M)	T	Tension	127	C7	New Manhole(JRC7)	Temporary Infra (Meter)	TKS-1	Existing TNB Pole NO.
48C FOC	FDC	1	Installed Pole (6.7M)	⊙	Pole Ring	13	—	FDP Boundary	Loop / Coil (Meter)	P001	New Pole NO.
96C FOC	Closure	2	Existing TNB Pole	⊙	FDP with (1:8) splitter	13	—	HDD (Meter)	#	CL01	Closure NO.
144C FOC	Existing Closure	□	Installed Riser	⊙	Existing Manhole	—	—	Open Cut (Meter)	C01	DP1	FDP NO.

ACTUAL HOMEPASS :

KEY PLAN:

PROJECT OWNER:

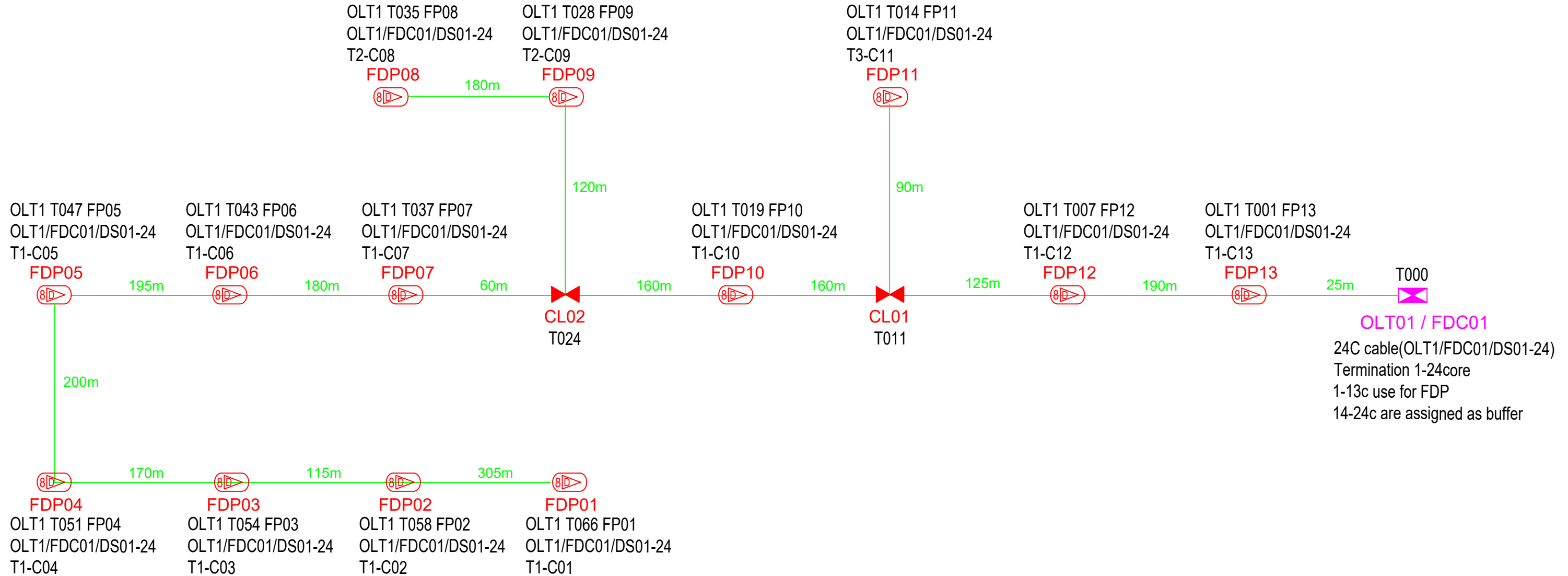
MAIN CONTRACTOR:

SUB-CONTRACTOR:

PROJECT TITLE:
 CONTRACTOR FOR SURVEY, TECHNICAL PROPOSAL AND WAYLEAVE & PERMIT APPROVAL -POP2 PROJECT

DRAWING TITLE:
 Construction Drawing AEEA001
 SMK DATO ZULKIFLI MUHAMMAD
 PROJECT PHASE:
 POP 2

Design By :	Date :	21/11/2024
Drawn By :	Scale :	NTS
Checked By :	Job Number :	JOB/NUMBER
DRAWING NUMBER :	Sheet :	3/3
AEEA001-CD-01		Size : A3
THIS PRINT AND ITS COPYRIGHT ARE THE PROPERTY OF STEADCOM SDN BHD		



OLT01 / FDC01
24C cable(OLT1/FDC01/DS01-24)
Termination 1-24core
1-13c use for FDP
14-24c are assigned as buffer

12C FOC	Installed 1:4 / 1:8 / 1:32 splitter	Installed Pole (9m)	s	Suspension	67	JB30	New Manhole (PIT)	Micro-Trenching (Meter)	MH1	MH NO.	
24C FOC	2355m Installed Patch Cord	Installed Pole (7.5M)	67	Tension	127	C7	New Manhole(JRC7)	Temporary Infra (Meter)	TKS-1	Existing TNB Pole NO.	
48C FOC	FDC	Installed Pole (6.7M)	1	Pole Ring	13		FDP Boundary	Loop / Coil (Meter)	80	P001	New Pole NO.
96C FOC	Closure	Existing TNB Pole	2	FDP with (1:8) splitter	13		HDD (Meter)	#	Active Outdoor Cabinet	CL01	Closure NO.
144C FOC	Existing Closure	Installed Riser		Existing Manhole			Open Cut (Meter)	C01	FDC NO.	DP1	FDP NO.

ACTUAL HOMEPASS :

KEY PLAN:	PROJECT OWNER:	MAIN CONTRACTOR:	SUB-CONTRACTOR:	PROJECT TITLE:	DRAWING TITLE:	Design By :	Date :
				CONTRACTOR FOR SURVEY, TECHNICAL PROPOSAL AND WAYLEAVE & PERMIT APPROVAL -POP2 PROJECT	Construction Drawing AEEA001 SMK DATO ZULKIFLI MUHAMMAD		21/11/2024
					PROJECT PHASE:	Checked By :	Scale :
					POP 2	Job Number :	NTS
						DRAWING NUMBER :	Job Number :
						AEEA001-CD-01	JOB/NUMBER
							Sheet :
							1/1
							Size :
							A3

THIS PRINT AND ITS COPYRIGHT ARE THE PROPERTY OF STEADCOM SDN BHD