

TECHNICAL PROPOSAL

POP2 ABD1079 SEKOLAH JENIS KEBANGSAAN TAMIL LADANG SOGOMANA (D-SIDE)

Company Name : KNZ ENGINEERING SDN BHD.
Company Address : NO 60 & 60 A JALAN KLEBANG INDAH 1 MEDAN KLEBANG INDAH 30010 IPOH PERAK
Prepared By : FARHAH AFIQAH BINTI AMDON
Date : 24/12/2024



Starting Point

Site / Boundary Name : Changkat Kruing
Address : SJKT Ladang Sogomana, 32500 Changkat Kruing, Perak
District : Manjung
Postcode : 32500
State : Perak
GPS Coordinate : 4.39045789651573, 100.694522392005
LRD : A

End Point

Site / Boundary Name : Changkat Kruing
Address : Kampung Changkat Kruing, 32500 Changkat Kruing, Perak
District : Manjung
Postcode : 32500
State : Perak
GPS Coordinate : 4.38554006628692, 100.685554426163
LRD : B



PROJEK PENYEDIAAN DAN PENYELENGGARAAN POINT OF PRESENCE (POP) FASA 2: HAB INFRASTRUKTUR GENTIAN OPTIK BERHAMPIRAN DENGAN SEKOLAH, KAWASAN PERINDUSTRIAN, PREMIS KERAJAAN DAN KOMUNITI SEKITARNYA OLEH KEMENTERIAN KOMUNIKASI MALAYSIA – ZON UTARA (KKMM.400-11/17/132(1))



1.0 WORK SUMMARY

NO	PROPOSED DISTANCE AND METHOD	UNIT	QUANTITY
1	Horizontal Directional Drilling (HDD)	m	60
2	Carriage Way Open Trench (CW)	m	0
3	Grass Verge Open Trenching (GV)	m	6
4	Micro Trenching (MT)	m	0
Total			66

NO	OTHER INFORMATION	UNIT	QUANTITY
1	Installation of Short Span ADSS Fibre Cables	m	4,270
2	Install New Pole	ea	89
3	Install New JRC7 Manhole	ea	2
4	Install GI Riser 100mm	ea	2
5	Install Fiber Distribution Point	ea	13
6	Install Closure	ea	7
7	Estimated Time Required for Completion	days	30

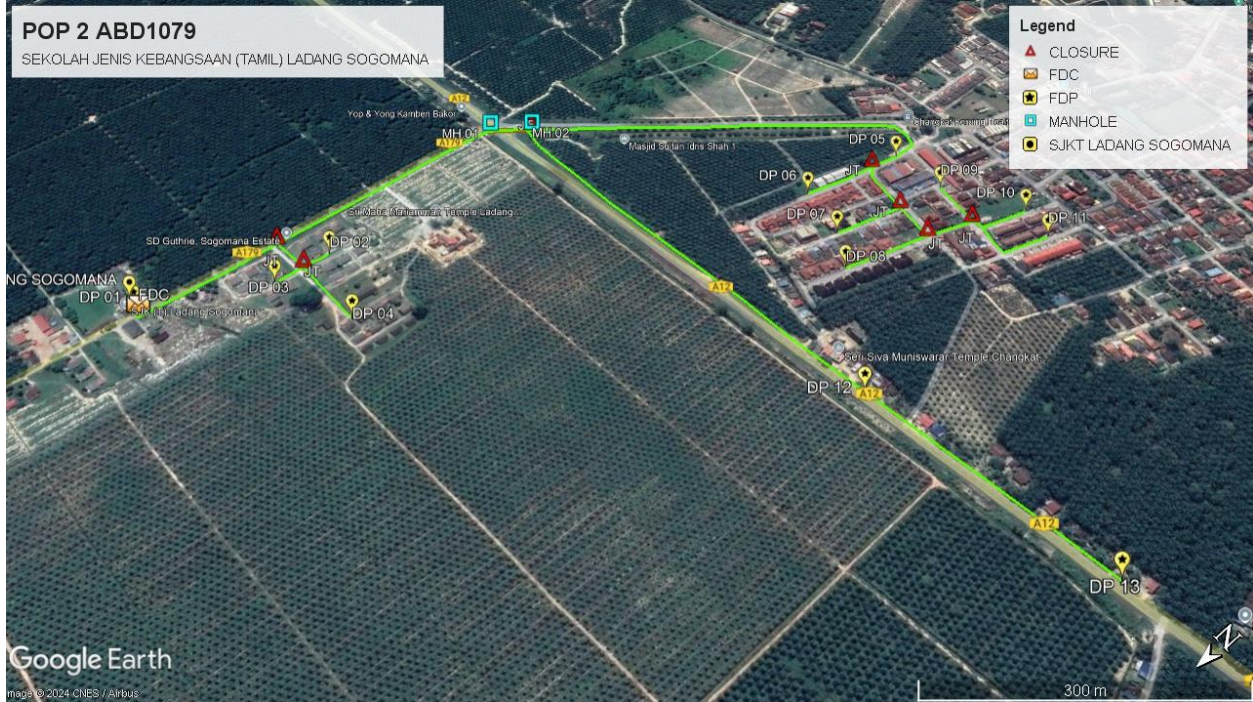
2.0 LOCAL AUTHORITY SUMMARY

Daerah Hilir Perak

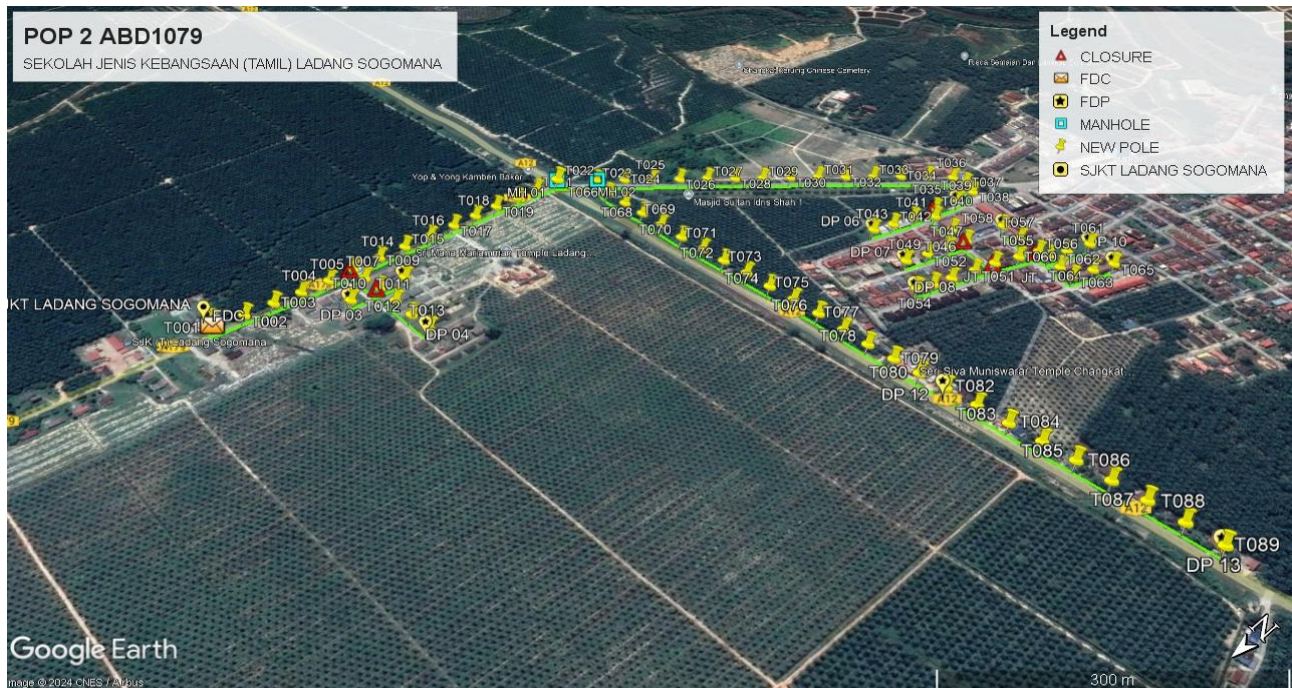
Bil	Items	Owner	Quantity	Distance
1	HDD	JKR	1	60m
		Majlis	-	-
		Estate / Private Land	-	-
2	New Pole	JKR	26	940m
		Majlis	42	1,490m
		Estate / Private Land	21	810m
3	Existing TNB Pole	JKR	-	-
		Majlis	-	-
		Estate / Private Land	-	-
Total				3,300m

Site Plan -KMZ (Overview site area)

Proposed FDP and Closure



Proposed New Pole



Site Plan - KMZ Routing (All Local Authority)



Red Colour – JKR Road

Blue Colour - Majlis Road

Yellow Colour – Estate Road

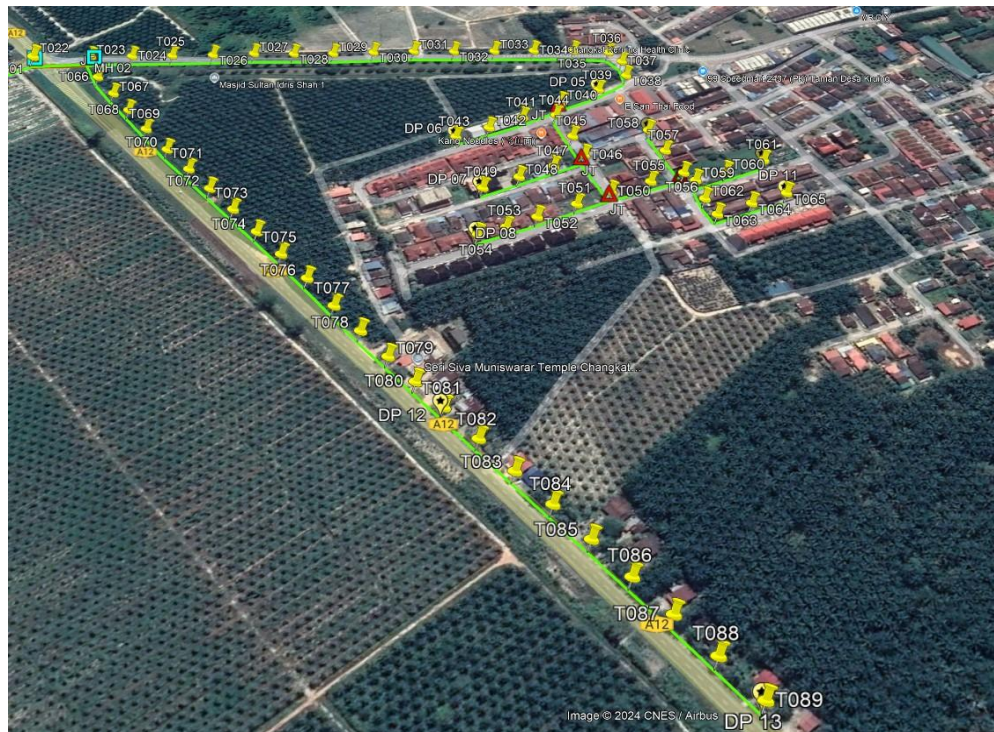
Site Plan – KMZ Routing (All site area)

Route 1



Route 1.1

Route 2



Route 2.1

3.0 PROPOSED NEW POLE

Proposed New Pole Coordinate					
No.	Pole Number	Distance (m)	Latitude	Longitude	Local Authority
1	T001	40	4.390458	100.6945224	Sime Darby Guthrie
2	T002	40	4.39013837836683	100.694371182471	Sime Darby Guthrie
3	T003	40	4.38979237340391	100.694369506091	Sime Darby Guthrie
4	T004	40	4.38945676200092	100.694373194128	Sime Darby Guthrie
5	T005	40	4.38910371623933	100.694373194128	Sime Darby Guthrie
6	T006	40	4.38878118060529	100.694392304868	Sime Darby Guthrie
7	T007	40	4.3887774925679	100.694141518325	Sime Darby Guthrie
8	T008	40	4.38875871710479	100.693855863064	Sime Darby Guthrie
9	T009	40	4.38843760481163	100.693834165457	Sime Darby Guthrie
10	T010	40	4.3891276884824	100.69386055693	Sime Darby Guthrie
11	T011	40	4.38877648673952	100.693499799818	Sime Darby Guthrie
12	T012	40	4.38879375346005	100.693147424608	Sime Darby Guthrie
13	T013	40	4.38878986582663	100.692815088106	Sime Darby Guthrie
14	T014	40	4.38842880539596	100.694389622659	Sime Darby Guthrie
15	T015	40	4.38807877711952	100.694387275726	Sime Darby Guthrie
16	T016	40	4.38772539608181	100.694387275726	Sime Darby Guthrie
17	T017	40	4.38737603835761	100.694389287382	Sime Darby Guthrie
18	T018	40	4.38705249689519	100.694391634315	Sime Darby Guthrie
19	T019	40	4.3867324758321	100.694393981248	Sime Darby Guthrie
20	T020	40	4.38640759326518	100.694403704256	Sime Darby Guthrie
21	T021	40	4.38608237542212	100.69441376254	Sime Darby Guthrie
22	T022	40	4.38576336018741	100.694391969591	JKR Manjung
23	T023	40	4.38536354768702	100.694076924609	JKR Manjung
24	T024	40	4.38508509658277	100.69383976981	Majlis Perbandaran Manjung
25	T025	40	4.38481436111033	100.69361044094	Majlis Perbandaran Manjung
26	T026	40	4.38453390263021	100.693381447345	Majlis Perbandaran Manjung

3.0 PROPOSED NEW POLE

Proposed New Pole Coordinate					
No.	Pole Number	Distance (m)	Latitude	Longitude	Local Authority
27	T027	40	4.38424942083657	100.693154130131	Majlis Perbandaran Manjung
28	T028	40	4.38398773781955	100.69290401414	Majlis Perbandaran Manjung
29	T029	40	4.38372722826898	100.692658927292	Majlis Perbandaran Manjung
30	T030	40	4.38345146365464	100.69242222346	Majlis Perbandaran Manjung
31	T031	40	4.38317603431642	100.692186858505	Majlis Perbandaran Manjung
32	T032	40	4.38290295191109	100.691949818283	Majlis Perbandaran Manjung
33	T033	40	4.38262534327805	100.691714789718	Majlis Perbandaran Manjung
34	T034	40	4.38236533664167	100.691469032317	Majlis Perbandaran Manjung
35	T035	40	4.38209828920662	100.691227633506	Majlis Perbandaran Manjung
36	T036	40	4.38188287429511	100.690994616598	Majlis Perbandaran Manjung
37	T037	40	4.38190567307174	100.690784398466	Majlis Perbandaran Manjung
38	T038	40	4.3820337485522	100.690583903342	Majlis Perbandaran Manjung
39	T039	40	4.38235561363399	100.690584238619	Majlis Perbandaran Manjung
40	T040	40	4.38271435908973	100.690663028508	Majlis Perbandaran Manjung
41	T041	40	4.38309070654213	100.690719354898	Majlis Perbandaran Manjung
42	T042	40	4.38339698128402	100.690785404295	Majlis Perbandaran Manjung
43	T043	40	4.38368448056281	100.690859500319	Majlis Perbandaran Manjung
44	T044	40	4.3828643951565	100.690552722663	Majlis Perbandaran Manjung
45	T045	40	4.38295341096818	100.690226834267	Majlis Perbandaran Manjung
46	T046	40	4.38305734656751	100.689956601709	Majlis Perbandaran Manjung
47	T047	40	4.38333311118186	100.690016616136	Majlis Perbandaran Manjung
48	T048	40	4.38362530432642	100.69009674713	Majlis Perbandaran Manjung
49	T049	40	4.38392487354577	100.690182913095	Majlis Perbandaran Manjung
50	T050	40	4.38321442343295	100.689447652549	Majlis Perbandaran Manjung
51	T051	40	4.3835103046149	100.689517389983	Majlis Perbandaran Manjung
52	T052	40	4.38383518718183	100.689606238157	Majlis Perbandaran Manjung
53	T053	40	4.38408765010536	100.68967429921	Majlis Perbandaran Manjung

3.0 PROPOSED NEW POLE

Proposed New Pole Coordinate					
No.	Pole Number	Distance (m)	Latitude	Longitude	Local Authority
54	T054	40	4.3843028973788	100.68974705413	Majlis Perbandaran Manjung
55	T055	40	4.38289506065633	100.689332529984	Majlis Perbandaran Manjung
56	T056	40	4.38261773685097	100.689241753365	Majlis Perbandaran Manjung
57	T057	40	4.38252578996556	100.689556645437	Majlis Perbandaran Manjung
58	T058	40	4.3824373199426	100.689857190845	Majlis Perbandaran Manjung
59	T059	40	4.38261593664614	100.689106209044	Majlis Perbandaran Manjung
60	T060	40	4.38235878669311	100.68902189116	Majlis Perbandaran Manjung
61	T061	40	4.38202623620024	100.68892012875	Majlis Perbandaran Manjung
62	T062	40	4.38272617214408	100.688889020006	Majlis Perbandaran Manjung
63	T063	40	4.38279150889175	100.688684161422	Majlis Perbandaran Manjung
64	T064	40	4.3824994543998	100.688596904863	Majlis Perbandaran Manjung
65	T065	40	4.38220718802685	100.68849758996	Majlis Perbandaran Manjung
66	T066	40	4.38546362333	100.693733822554	JKR Manjung
67	T067	40	4.38548658974469	100.693374741822	JKR Manjung
68	T068	40	4.38551441766322	100.6930183433	JKR Manjung
69	T069	40	4.38553470186889	100.692659262568	JKR Manjung
70	T070	40	4.38553704880178	100.692295823246	JKR Manjung
71	T071	40	4.38553570769727	100.691936071962	JKR Manjung
72	T072	40	4.38554073683918	100.691581685096	JKR Manjung
73	T073	40	4.38554073683918	100.691217575222	JKR Manjung
74	T074	40	4.38554375432432	100.690855477005	JKR Manjung
75	T075	40	4.38554945401847	100.690492708236	JKR Manjung
76	T076	40	4.38555113039911	100.690128598362	JKR Manjung
77	T077	40	4.38555884175003	100.689769182354	JKR Manjung
78	T078	40	4.38555884175003	100.689435582608	JKR Manjung
79	T079	40	4.38556018285453	100.689094606787	JKR Manjung
80	T080	40	4.38556118868291	100.688769053668	JKR Manjung
81	T081	40	4.3855635356158	100.68844249472	JKR Manjung
82	T082	40	4.38555884175003	100.688073020428	JKR Manjung
83	T083	40	4.3855497892946	100.687713269144	JKR Manjung
84	T084	40	4.38554207794368	100.687348488718	JKR Manjung



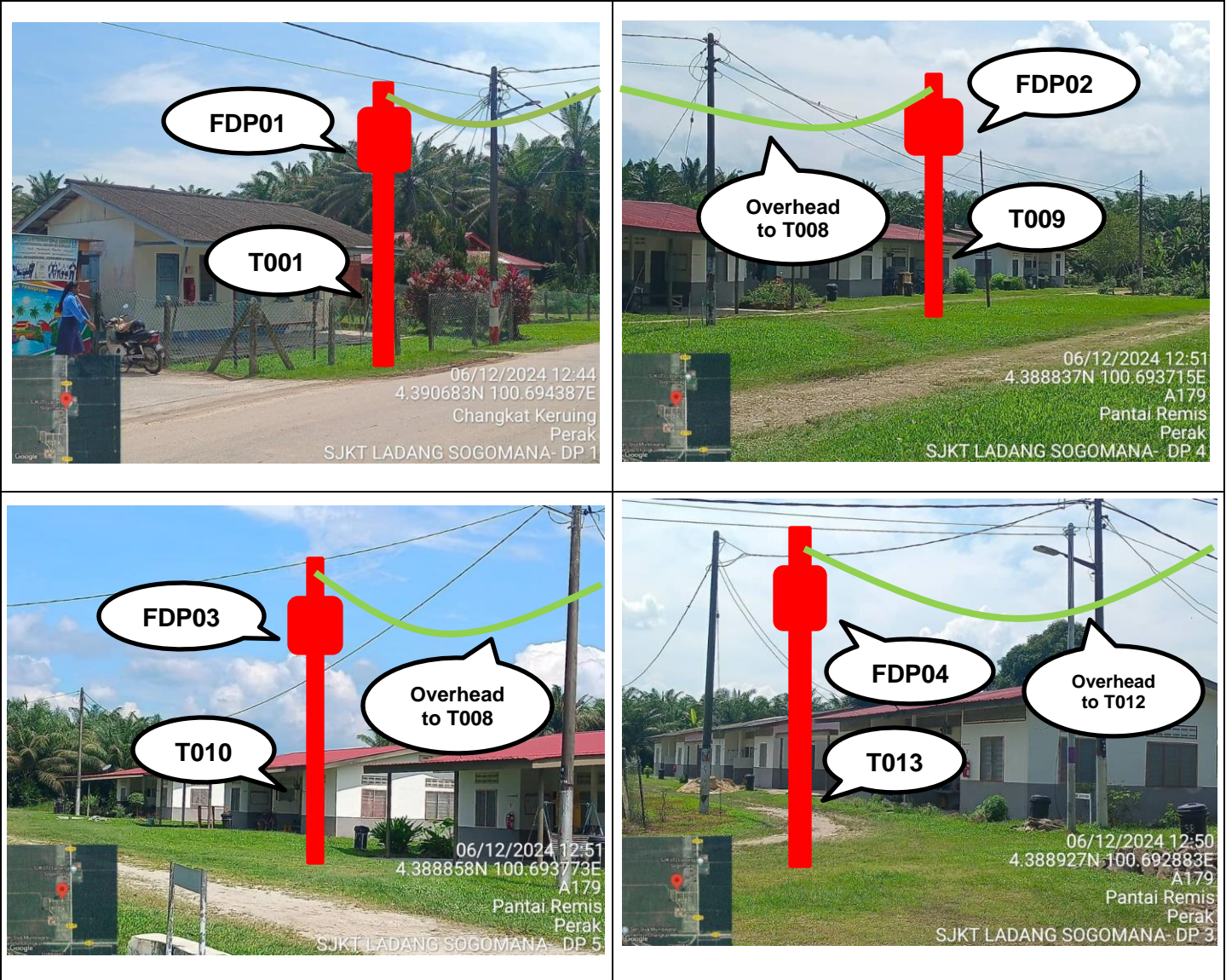
PROJEK PENYEDIAAN DAN PENYELENGGARAAN POINT OF PRESENCE (POP) FASA 2: HAB INFRASTRUKTUR GENTIAN OPTIK BERHAMPIRAN DENGAN SEKOLAH, KAWASAN PERINDUSTRIAN, PREMIS KERAJAAN DAN KOMUNITI SEKITARNYA OLEH KEMENTERIAN KOMUNIKASI MALAYSIA – ZON UTARA (KKMM.400-11/17/132(1))



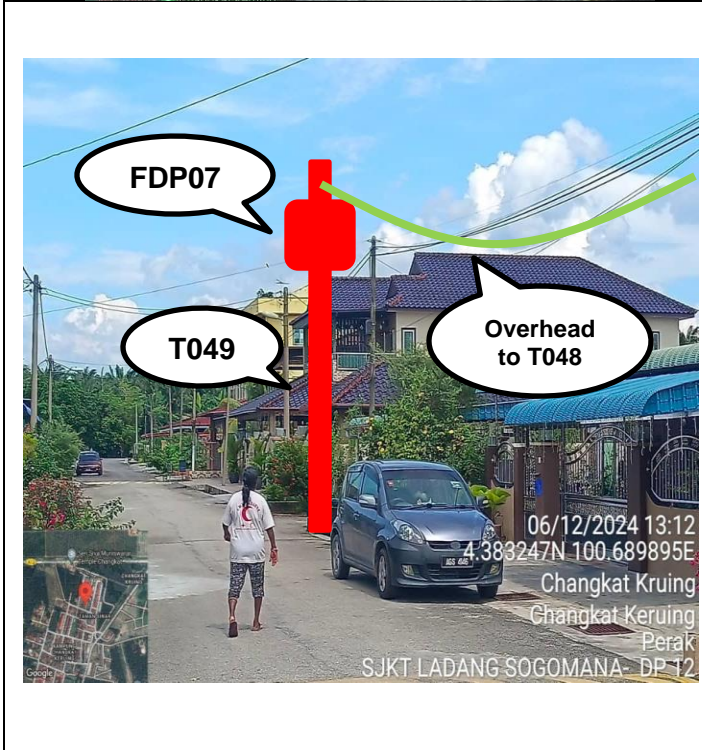
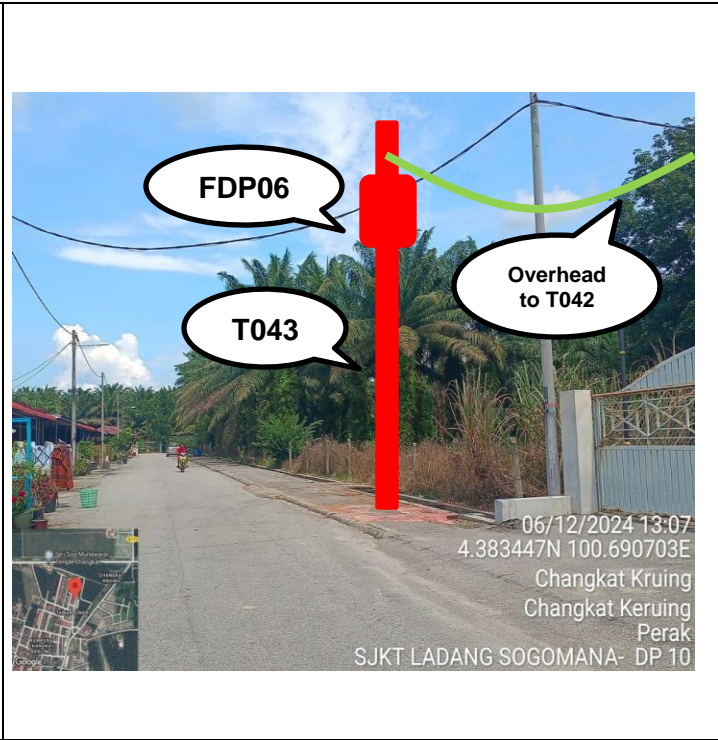
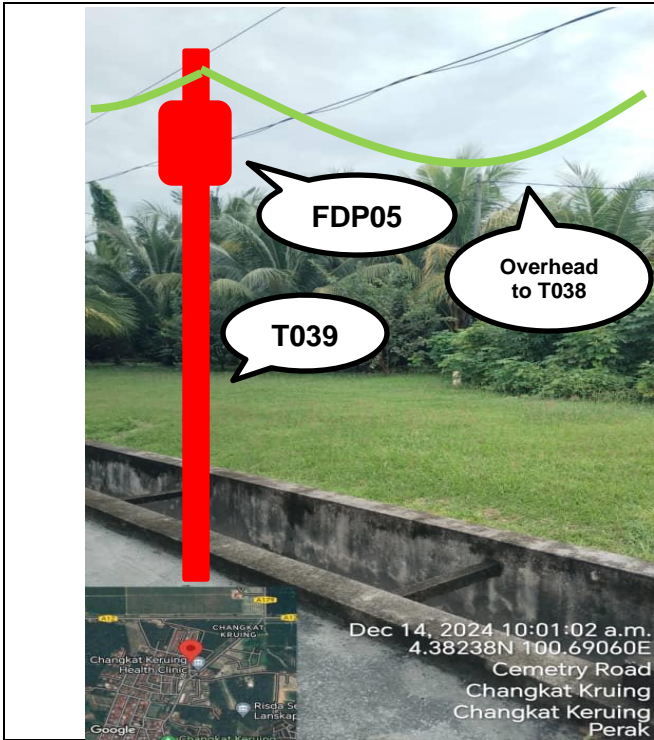
3.0 PROPOSED NEW POLE

Proposed New Pole Coordinate					
No.	Pole Number	Distance (m)	Latitude	Longitude	Local Authority
85	T085	40	4.38553906045854	100.686991084367	JKR Manjung
86	T086	40	4.38553872518241	100.686628315598	JKR Manjung
87	T087	40	4.38553738407791	100.686276946217	JKR Manjung
88	T088	40	4.38553805463016	100.68591652438	JKR Manjung
89	T089	40	4.38554007	100.68555443	JKR Manjung

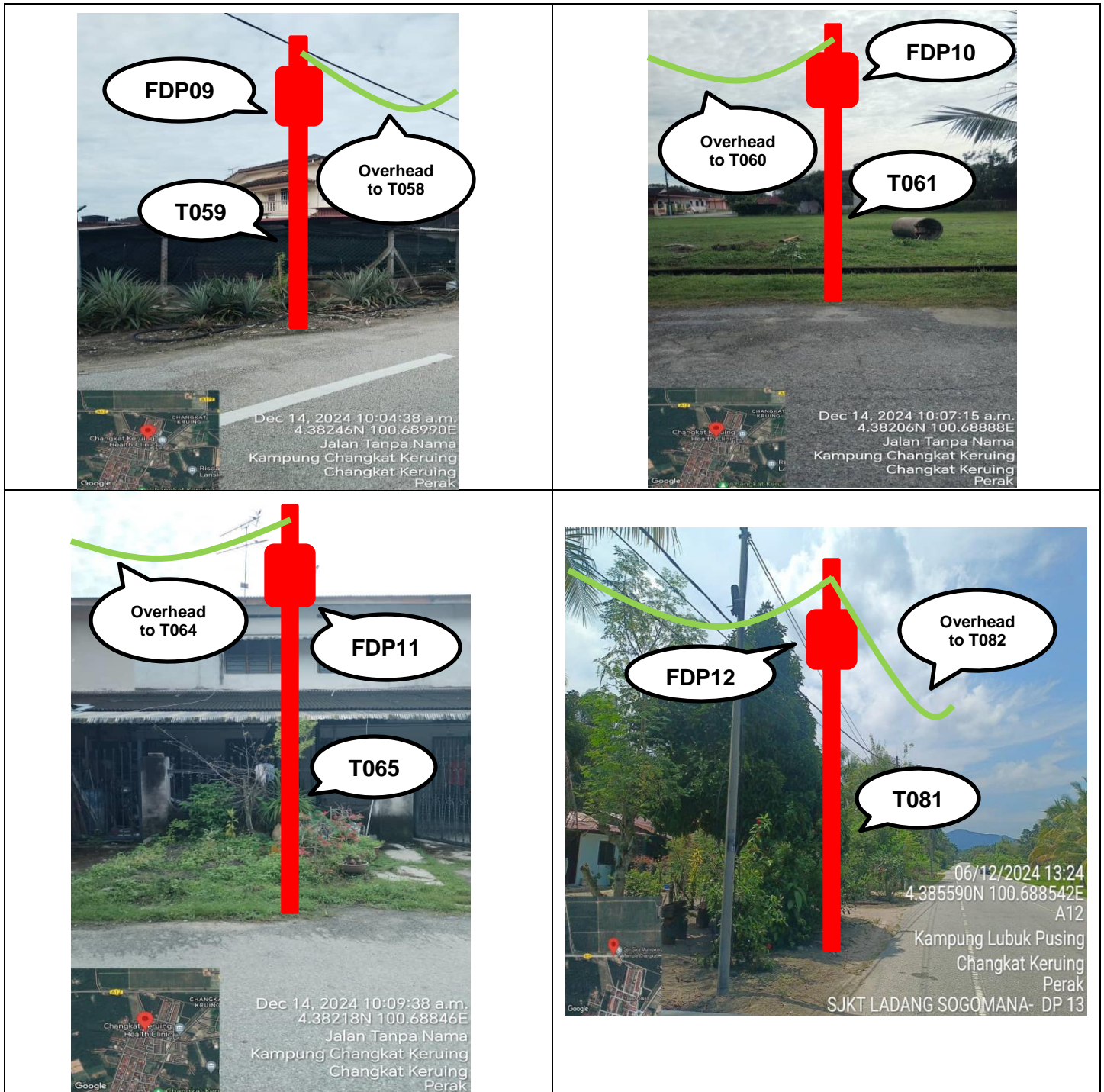
4.0 SITE PHOTOS - PROPOSED NEW POLE



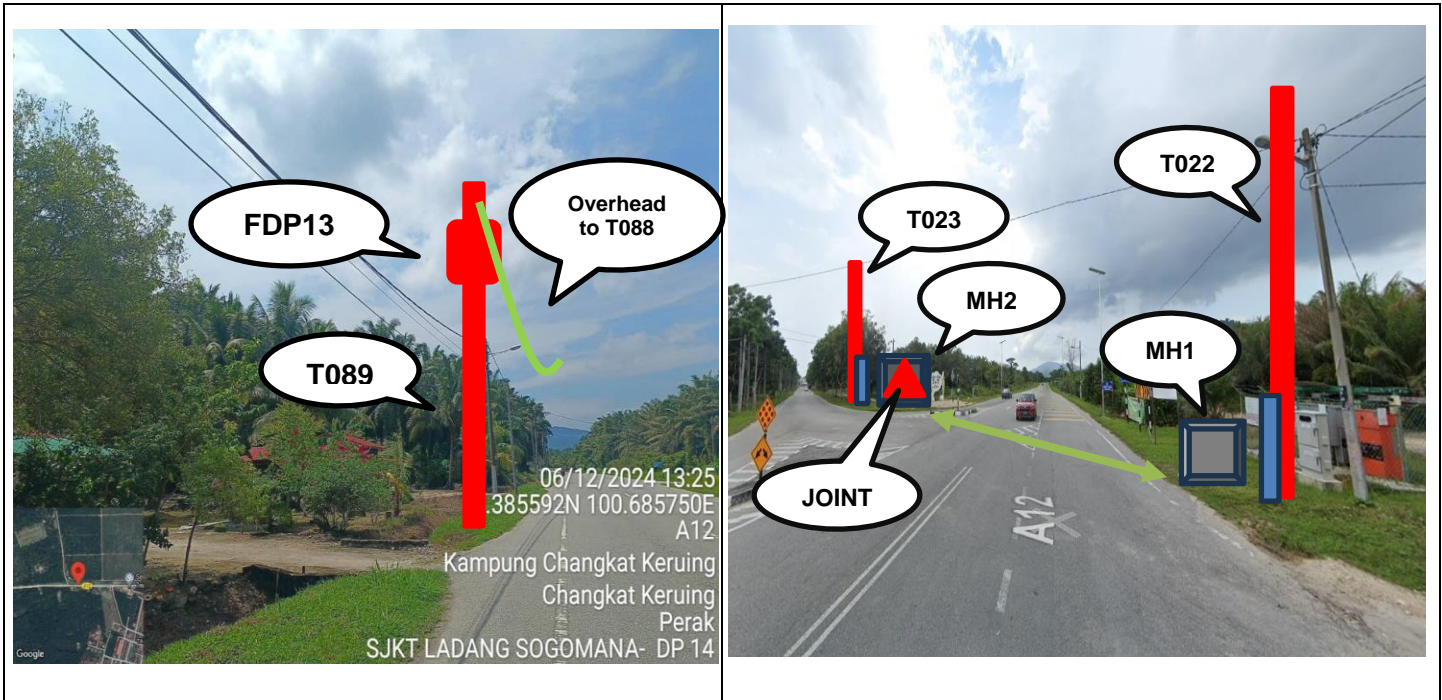
4.0 SITE PHOTOS - PROPOSED NEW POLE





4.0 SITE PHOTOS - PROPOSED NEW POLE



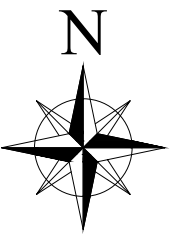
4.0 SITE PHOTOS - PROPOSED NEW POLE



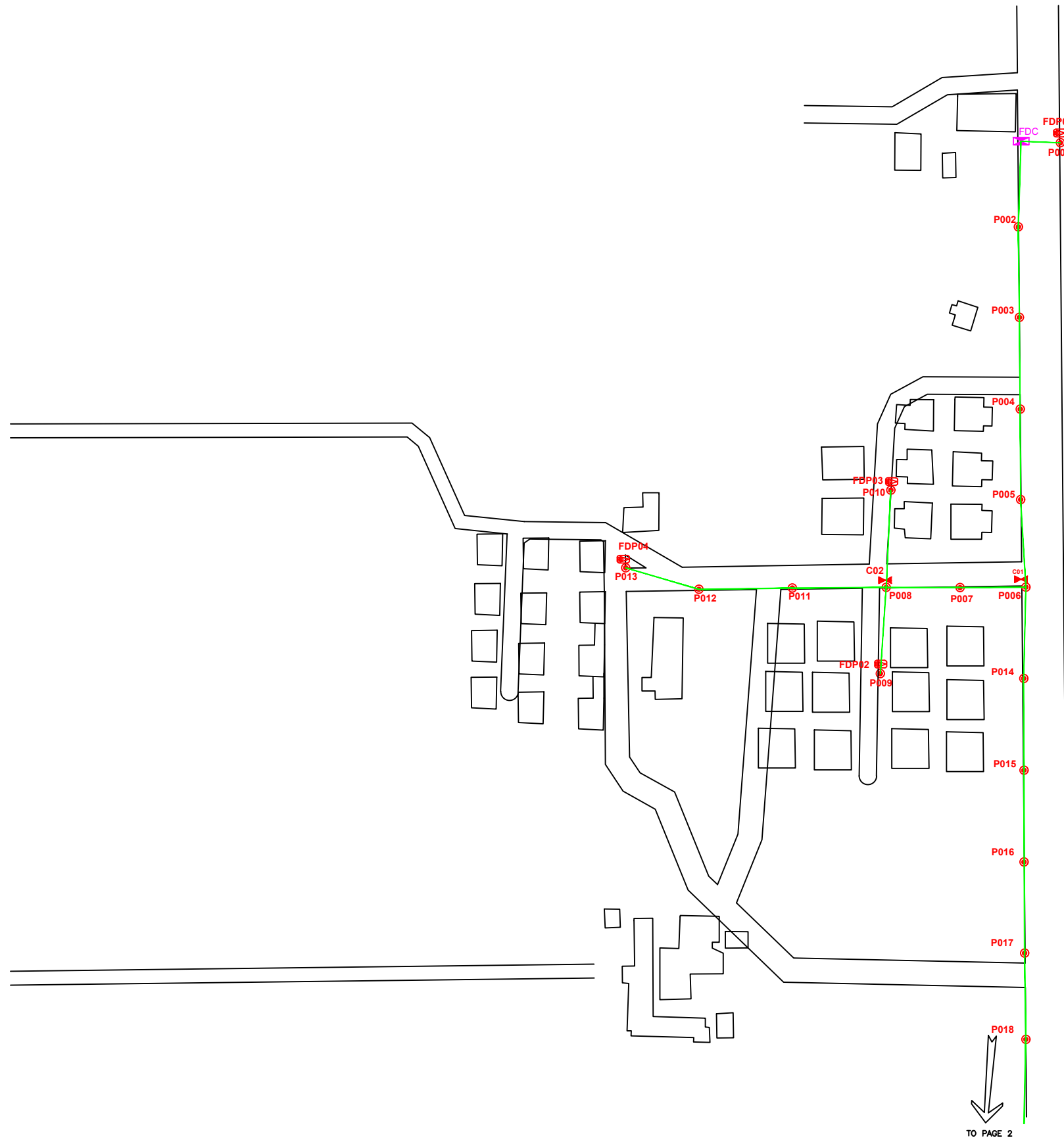
	<p>PROJEK PENYEDIAAN DAN PENYELENGGARAAN POINT OF PRESENCE (POP) FASA 2: HAB INFRASTRUKTUR GENTIAN OPTIK BERHAMPIRAN DENGAN SEKOLAH, KAWASAN PERINDUSTRIAN, PREMIS KERAJAAN DAN KOMUNITI SEKITARNYA OLEH KEMENTERIAN KOMUNIKASI MALAYSIA – ZON UTARA (KKMM.400-11/17/132(1))</p>	
--	--	--

5.0 3rd PARTIES DEPENDENCIES

NO	LOCAL COUNCIL / AUTHORITY	REMARK
1	Majlis Perbandaran Manjung	1,000m
2	JKR Manjung	1,490m
3	Sime Darby Guthrie	810m



SJK(T) LADANG SOGOMANA



TO PAGE 2

LEGEND	
	12C FOC
	24C FOC
	48C FOC
	90C FOC
	144C FOC
	Installed 1:4 splitter in FDC
	FDP
	CLOSURE
	NEW MANHOLE (PT)
	INSTALLED POLE
	INSTALLED POLE (9M)
	INSTALLED RISER
	SUSPENSION BIG
	SUSPENSION SMALL
	FDC
	NEW MANHOLE
	HOUSE NUMBER
	EXISTING ALLO POLE
	LOOP
	FDP BOUNDARY
	TENSION SMALL / TENSION BIG
	EXISTING MANHOLE
	CLOSURE NO.
	FDP NO.
	FDC NO.
	MH NO.
	EXISTING TNB POLE NO.
	NEW POLE NO.
	SEE PLAN TO THIS POINT
	SEE SHEET XXX

KEY PLAN

PROJECT OWNER

MAIN CONTRACTOR

SUB-CONTRACTOR

KNZ ENGINEERING SDN BHD
 NO. 60 & 60A, Jalan Klebang Indah 1,
 Medan Klebang Indah,
 30100 Ipoh, Perak
 No Tel: 019-3695071
 Email: admin@knzengineering.com.my
 Website: www.knzengineering.com.my

PROJECT TITLE

SEKOLAH JENIS KEBANGSAAN (TAMIL) LADANG SOGOMANA

DRAWING TITLE

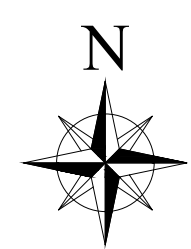
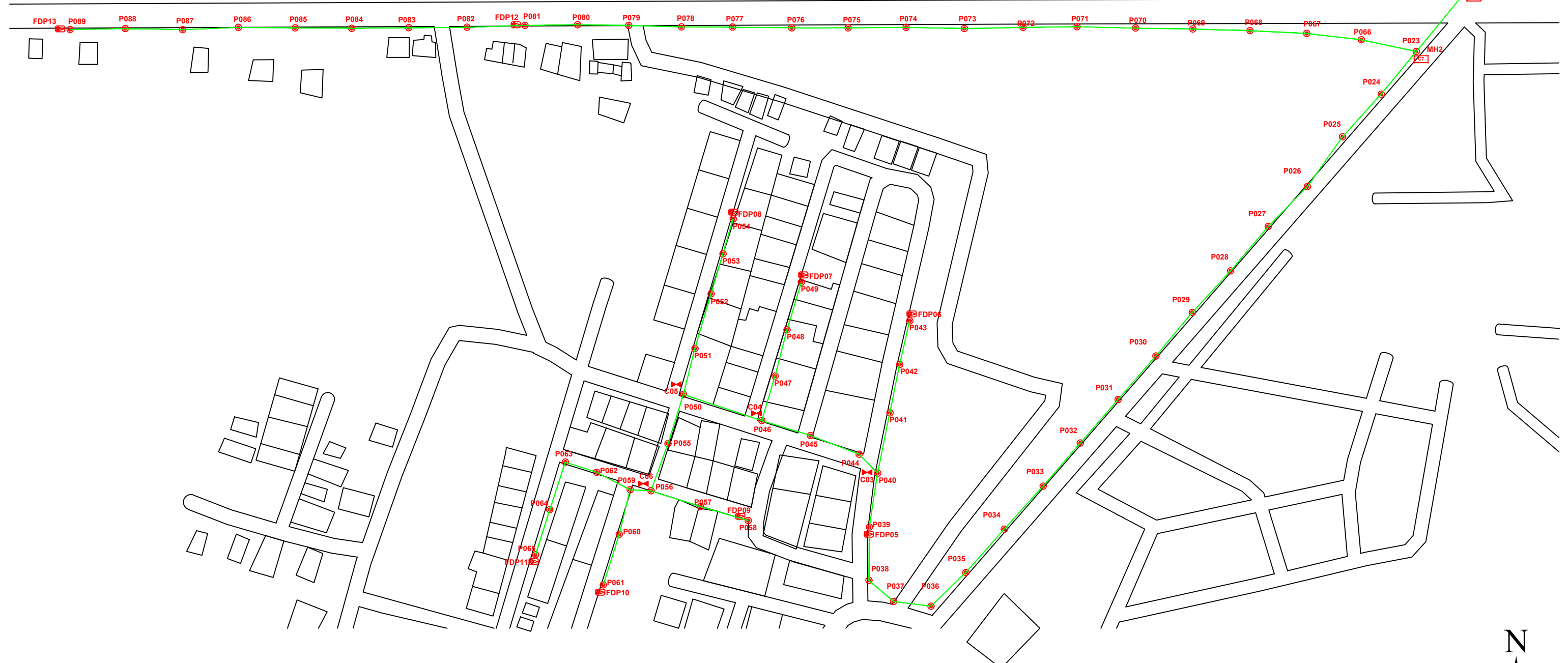
TP DRAWING POP 2 AT SEKOLAH JENIS KEBANGSAAN (TAMIL) LADANG SOGOMANA

PROJECT PHASE

PROJECT PHASE 2

DESIGN BY	ZUL FAHMIE	DATE	19/12/2024
DRAWN BY	ZUL FAHMIE	SCALE	NOT TO SCALE
CHECKED BY	AZHAN HARIS	JOB NUMBER	ABD1079
DRAWING NUMBER		ABD1079	
THIS PRINT AND ITS COPYRIGHT ARE THE PROPERTY OF KNZ ENGINEERING SDN. BHD.		1/2	
		A3	

FROM PAGE 1



LEGEND					
	12C FOC		Installed 1:4 splitter in FDC		INSTALLED POLE (9M)
	24C FOC		FDP		NEW MANHOLE
	48C FOC		CLOSURE		EXISTING MANHOLE
	90C FOC		NEW MANHOLE (PT)		EXISTING ALLO POLE
	144C FOC		INSTALLED POLE		LOOP BOUNDARY
			TENSION SMALL / TENSION BIG		MH NO.
			HOUSE NUMBER		EXISTING TNB POLE NO.
			SUSPENSION BIG		NEW POLE NO.
			SUSPENSION SMALL		FDP NO.
			FDC		FDC NO.

KEY PLAN

PROJECT OWNER



PROJECT OWNER



PRIVASAT

MAIN CONTRACTOR



KNZ Engineering

SUB-CONTRACTOR

KNZ ENGINEERING SDN BHD
 NO. 60 & 60A, Jalan Klebang Indah 1,
 Medan Klebang Indah,
 30100 Ipoh, Perak
 No Tel: 019-3695071
 Email:
 admin@knzengineering.com.my
 Website:
 www.knzengineering.com.my

PROJECT TITLE

SEKOLAH JENIS KEBANGSAAN
 (TAMIL) LADANG SOGOMANA

DRAWING TITLE

TP DRAWING POP 2 AT
 SEKOLAH JENIS KEBANGSAAN
 (TAMIL) LADANG SOGOMANA

PROJECT PHASE

PROJECT PHASE 2

DESIGN BY	ZUL FAHMIE	DATE	19/12/2024
DRAWN BY	ZUL FAHMIE	SCALE	NOT TO SCALE
CHECKED BY	AZHAN HARISS	JOB NUMBER	ABD1079
DRAWING NUMBER		ABD1079	
THIS PRINT AND ITS COPYRIGHT ARE THE PROPERTY OF KNZ ENGINEERING SDN. BHD.			A3