

## TECHNICAL PROPOSAL

### POP2 ABA7007 SEKOLAH KEBANGSAAN AYER PANAS (D-SIDE)

**Company Name** : WabTech Sdn Bhd  
**Company Address** : 101-1, Jalan Metro Sendayan, 71950, Seremban, Negeri Sembilan.  
**Prepared By** : Mohd Farid bin Othman  
**Date** : 20/02/2025



Point A



Point B

#### Starting Point

**Site / Boundary Name** : Sekolah Kebangsaan Ayer Panas  
**Address** : Jalan Betong, 33100 Pengkalan Hulu, Perak.  
**District** : Pengkalan Hulu  
**Postcode** : 33100  
**State** : Perak  
**GPS Coordinate** : 5.725262, 101.014876  
**LRD** : A

#### End Point

**Site / Boundary Name** : Taman Akasia, Pengkalan Hulu  
**Address** : Taman Akasia, Jalan Betong, 33100 Pengkalan Hulu, Perak  
**District** : Pengkalan Hulu  
**Postcode** : 33100  
**State** : Perak  
**GPS Coordinate** : 5.722073, 101.008634  
**LRD** : B



PROJEK PENYEDIAAN DAN PENYELENGGARAAN POINT OF PRESENCE (POP)  
FASA 2: HAB INFRASTRUTUK GENTIAN OPTIK BERHAMPIRAN DENGAN  
SEKOLAH, KAWASAN PERINDUSTRIAN, PREMIS KERAJAAN DAN KOMUNITI  
SEKITARNYA OLEH KEMENTERIAN KOMUNIKASI MALAYSIA – ZON UTARA  
(KKMM.400-11/17/132(1))



WABTECH SDN BHD  
(1398887-X)

## 1.0 WORK SUMMARY

NO	PROPOSED DISTANCE AND METHOD	UNIT	QUANTITY
1	Horizontal Directional Drilling (HDD)	m	80
2	Carriage Way Open Trench (CW)	m	0
3	Grass Verge Open Trenching (GV)	m	0
4	Micro Trenching (MT)	m	0
Total			

NO	OTHER INFORMATION	UNIT	QUANTITY
1	Installation of Short Span ADSS Fibre Cables	m	3548m
2	Install New Pole	ea	86
3	Install New JRC7 Manhole	ea	2
4	Install GI Riser 100mm	ea	2
5	Install Fiber Distribution Point and Closure (Splicing, Termination and Testing)	ea	19
6	Estimated Time Required for Completion	days	30



PROJEK PENYEDIAAN DAN PENYELENGGARAAN POINT OF PRESENCE (POP)  
FASA 2: HAB INFRASTRUTUK GENTIAN OPTIK BERHAMPIRAN DENGAN  
SEKOLAH, KAWASAN PERINDUSTRIAN, PREMIS KERAJAAN DAN KOMUNITI  
SEKITARNYA OLEH KEMENTERIAN KOMUNIKASI MALAYSIA – ZON UTARA  
(KKMM.400-11/17/132(1))



WABTECH SDN BHD  
(1398887-X)

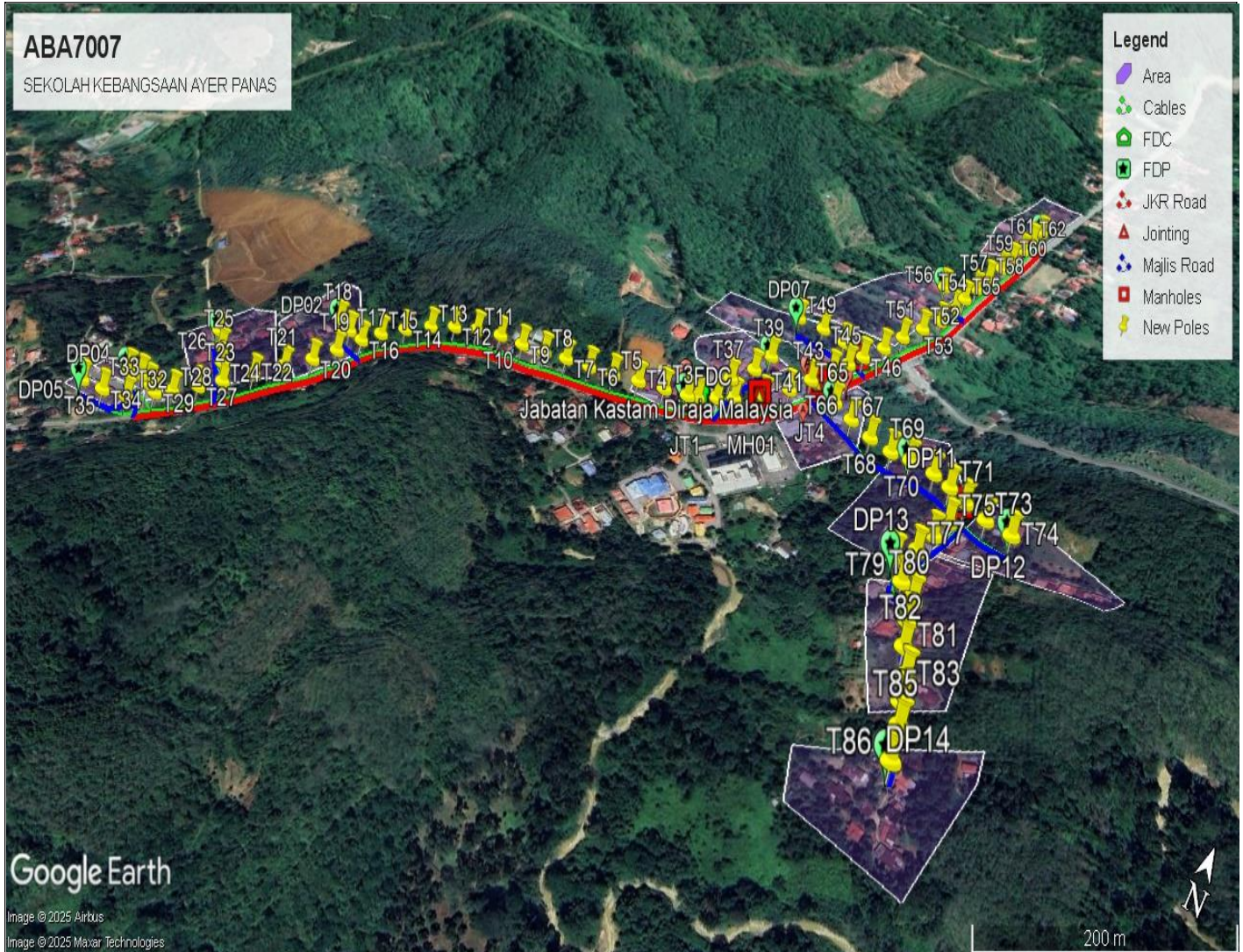
## 2.0 LOCAL AUTHORITY SUMMARY

Daerah Pengkalan Hulu

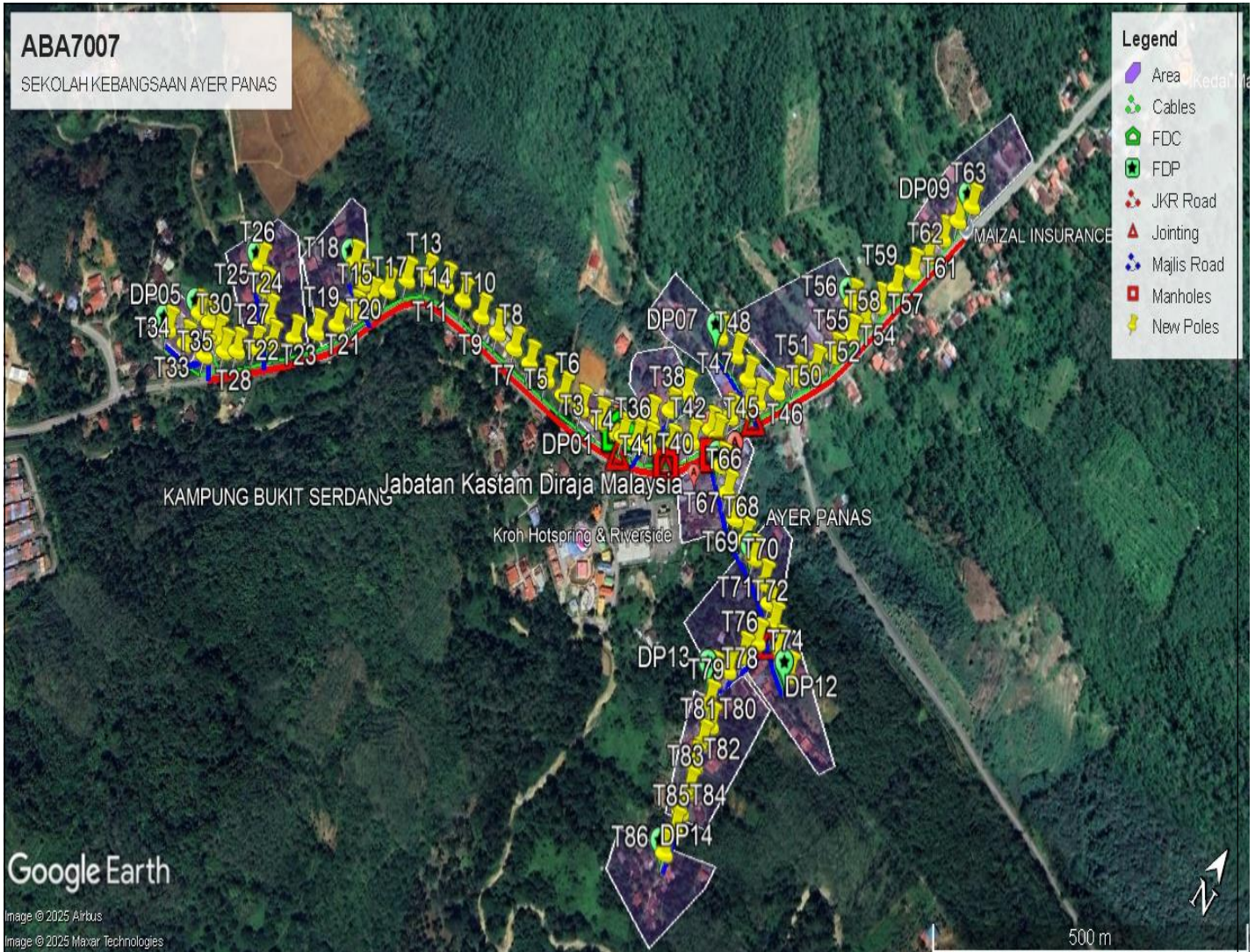
NO	ITEMS	Owner	Quantity	Distance (m)
1	HDD	JKR	1	80
		Majlis	-	-
		PDT	-	-
2	New Pole	JKR	47	1263
		Majlis	39	1469
		PDT	-	-
<b>Total Distance (m)</b>				<b>2812</b>

### 3.0 SITE PLAN (KMZ)

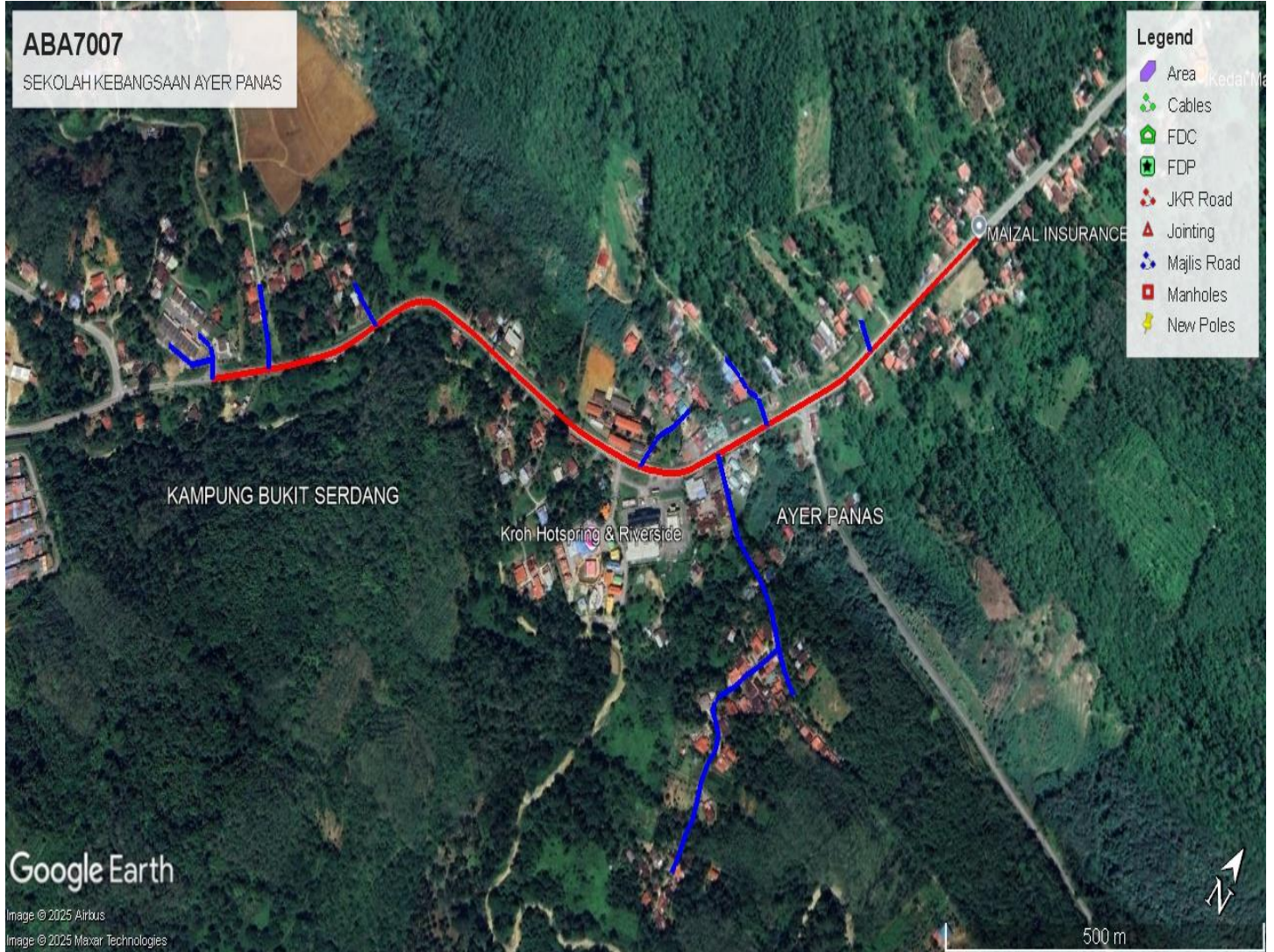
#### 3.1 Overview Site Area



### 3.2 Site boundry



### 3.3 Road Boundry



#### 4.0 PROPOSED NEW POLE

Proposed New Pole Coordinate					
No.	Pole Number	Distance (m)	Latitude	Longitude	Local Authority
1	FDC POLE	10	5.725292	101.014988	JKR
2	T001	13	5.725292	101.014988	JKR
3	T002	31	5.725260	101.014876	JKR
4	T003	35	5.725215	101.014604	JKR
5	T004	35	5.725163	101.014294	JKR
6	T005	35	5.725120	101.013982	JKR
7	T006	35	5.725109	101.013666	JKR
8	T007	33	5.725100	101.013351	JKR
9	T008	35	5.725093	101.013050	JKR
10	T009	35	5.725080	101.012737	JKR
11	T010	38	5.725078	101.012423	JKR
12	T011	36	5.725063	101.012080	JKR
13	T012	35	5.725038	101.011754	JKR
14	T013	35	5.724946	101.011452	JKR
15	T014	35	5.724728	101.011223	JKR
16	T015	28	5.724453	101.011070	JKR
17	T016	28	5.724221	101.010964	JKR
18	T017	29	5.724285	101.010717	Majlis Daerah Pengkalan Hulu
19	T018	35	5.724383	101.010477	Majlis Daerah Pengkalan Hulu
20	T019	34	5.723937	101.010825	JKR
21	T020	36	5.723665	101.010692	JKR
22	T021	39	5.723410	101.010486	JKR
23	T022	39	5.723152	101.010246	JKR
24	T023	34	5.722905	101.009996	JKR
25	T024	33	5.723114	101.009772	Majlis Daerah Pengkalan Hulu
26	T025	33	5.723315	101.009547	Majlis Daerah Pengkalan Hulu
27	T026	30	5.723501	101.009319	Majlis Daerah Pengkalan Hulu
28	T027	31	5.722706	101.009816	JKR
29	T028	22	5.722508	101.009616	JKR
30	T029	22	5.722386	101.009464	JKR
31	T030	23	5.722452	101.009281	Majlis Daerah Pengkalan Hulu
32	T031	21	5.722511	101.009085	Majlis Daerah Pengkalan Hulu
33	T032	33	5.722503	101.008892	Majlis Daerah Pengkalan Hulu
34	T033	36	5.722169	101.009253	JKR
35	T034	34	5.722100	101.008940	Majlis Daerah Pengkalan Hulu
36	T035	24	5.722074	101.008632	Majlis Daerah Pengkalan Hulu
37	T036	38	5.725370	101.015192	JKR
38	T037	35	5.725706	101.015215	Majlis Daerah Pengkalan Hulu

No.	Pole Number	Distance (m)	Latitude	Longitude	Local Authority
39	T038	35	5.725959	101.015401	Majlis Daerah Pengkalan Hulu
40	T039	22	5.726264	101.015483	Majlis Daerah Pengkalan Hulu
41	T040	37	5.725445	101.015374	JKR
42	T041	36	5.725628	101.015657	JKR
43	T042	36	5.725877	101.015870	JKR
44	T043	37	5.726159	101.016027	JKR
45	T044	26	5.726453	101.016181	JKR
46	T045	25	5.726647	101.016307	JKR
47	T046	33	5.726843	101.016422	JKR
48	T047	36	5.726955	101.016147	Majlis Daerah Pengkalan Hulu
49	T048	36	5.727060	101.015840	Majlis Daerah Pengkalan Hulu
50	T049	35	5.727079	101.015516	Majlis Daerah Pengkalan Hulu
51	T050	36	5.727110	101.016590	JKR
52	T051	36	5.727397	101.016731	JKR
53	T052	36	5.727674	101.016897	JKR
54	T053	37	5.727959	101.017045	JKR
55	T054	30	5.728284	101.017137	JKR
56	T055	32	5.728545	101.017190	JKR
57	T056	32	5.728609	101.016909	Majlis Daerah Pengkalan Hulu
58	T057	36	5.728828	101.017264	JKR
59	T058	37	5.729141	101.017355	JKR
60	T059	32	5.729460	101.017449	JKR
61	T060	35	5.729737	101.017531	JKR
62	T061	34	5.730044	101.017604	JKR
63	T062	31	5.730344	101.017670	JKR
64	T063	80	5.730608	101.017740	JKR
65	T064	36	5.726145	101.016160	JKR
66	T065	35	5.725928	101.016399	Majlis Daerah Pengkalan Hulu
67	T066	35	5.725741	101.016655	Majlis Daerah Pengkalan Hulu
68	T067	31	5.725574	101.016925	Majlis Daerah Pengkalan Hulu
69	T068	27	5.725468	101.017186	Majlis Daerah Pengkalan Hulu
70	T069	35	5.725395	101.017415	Majlis Daerah Pengkalan Hulu
71	T070	26	5.725256	101.017698	Majlis Daerah Pengkalan Hulu
72	T071	27	5.725121	101.017896	Majlis Daerah Pengkalan Hulu
73	T072	31	5.724971	101.018087	Majlis Daerah Pengkalan Hulu
74	T073	34	5.724808	101.018318	Majlis Daerah Pengkalan Hulu
75	T074	34	5.724661	101.018587	Majlis Daerah Pengkalan Hulu
76	T075	30	5.724674	101.018002	Majlis Daerah Pengkalan Hulu
77	T076	31	5.724420	101.017921	Majlis Daerah Pengkalan Hulu
78	T077	26	5.724155	101.017837	Majlis Daerah Pengkalan Hulu
79	T078	35	5.723978	101.017677	Majlis Daerah Pengkalan Hulu
80	T079	26	5.723697	101.017826	Majlis Daerah Pengkalan Hulu
81	T080	26	5.723517	101.017978	Majlis Daerah Pengkalan Hulu



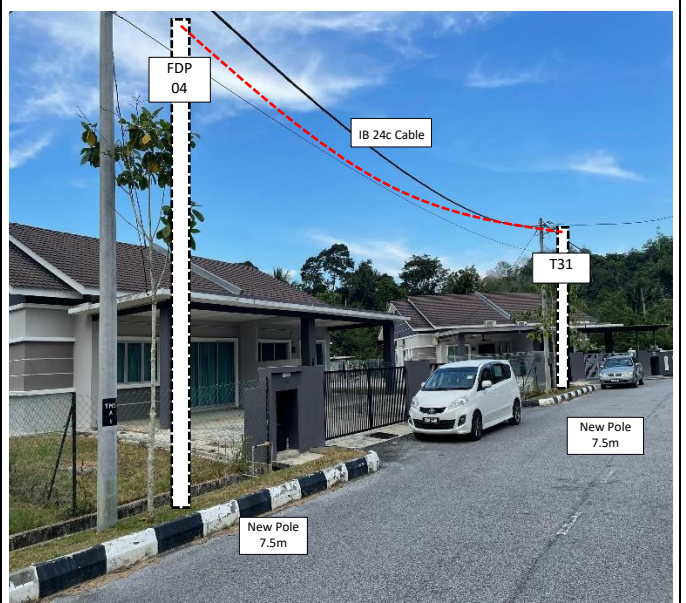
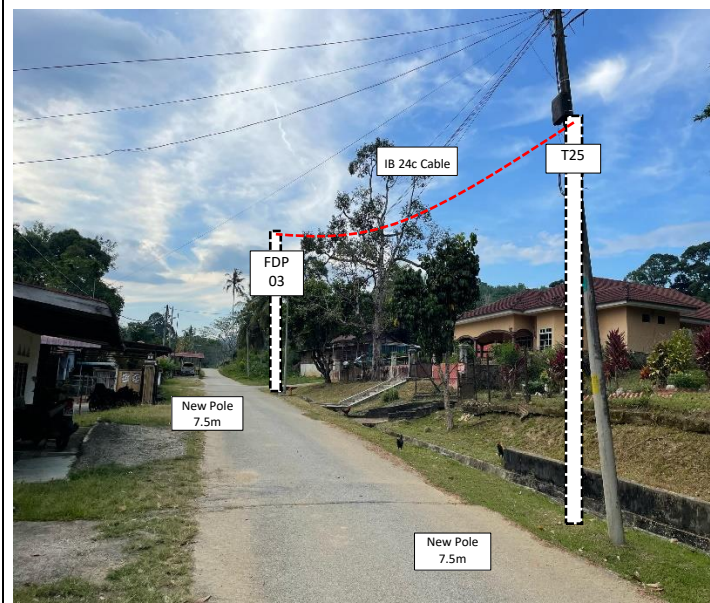
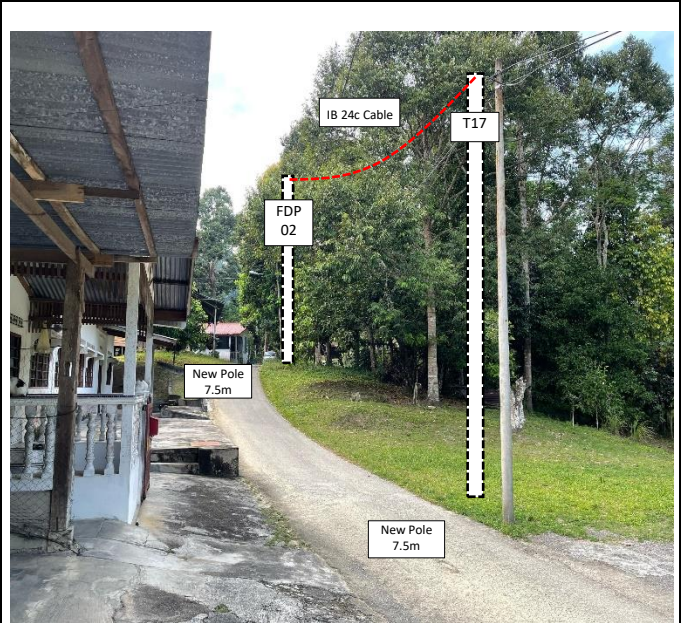
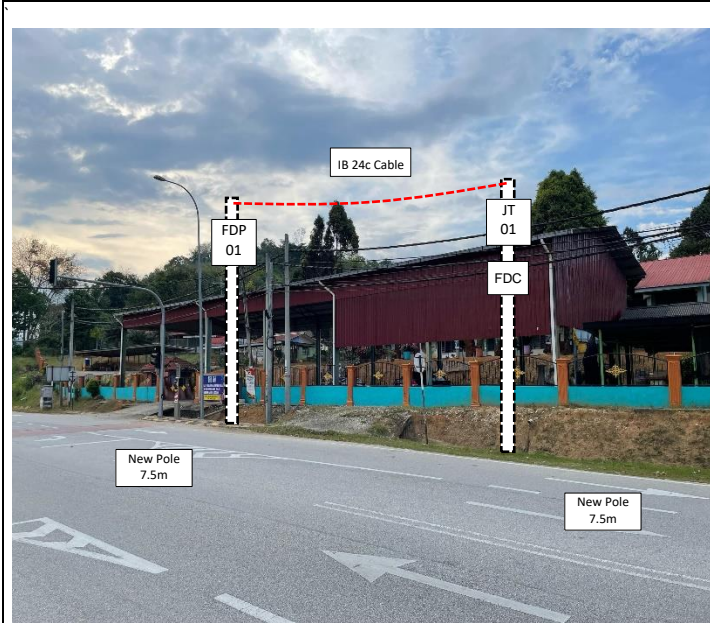
PROJEK PENYEDIAAN DAN PENYELENGGARAAN POINT OF PRESENCE (POP)  
FASA 2: HAB INFRASTRUTUK GENTIAN OPTIK BERTAMPAHAN DENGAN  
SEKOLAH, KAWASAN PERINDUSTRIAN, PREMIS KERAJAAN DAN KOMUNITI  
SEKITARNYA OLEH KEMENTERIAN KOMUNIKASI MALAYSIA – ZON UTARA  
(KKMM.400-11/17/132(1))

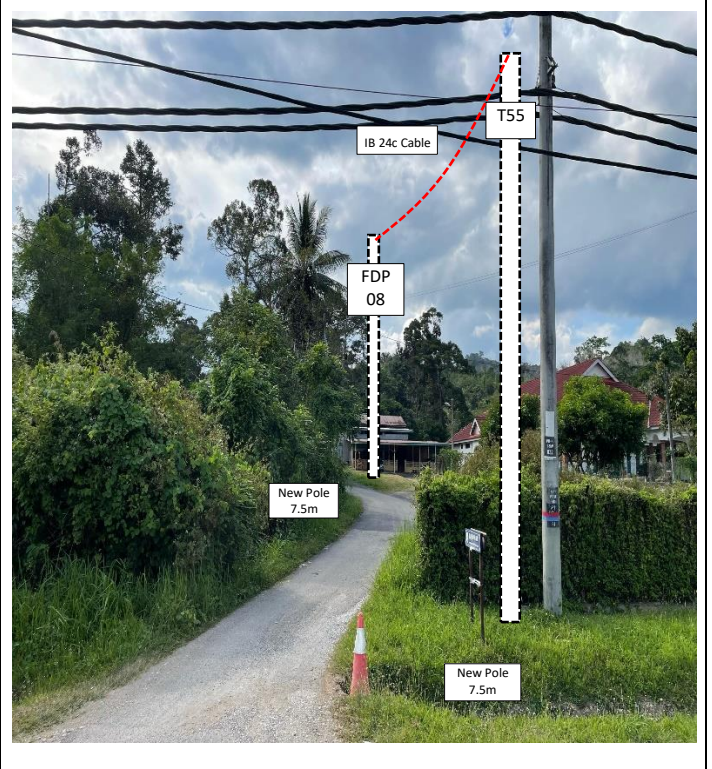
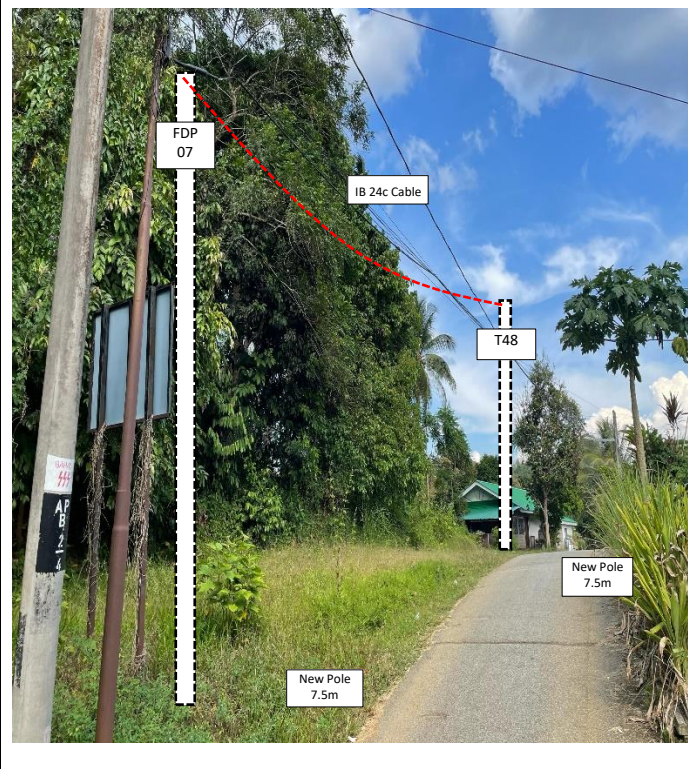
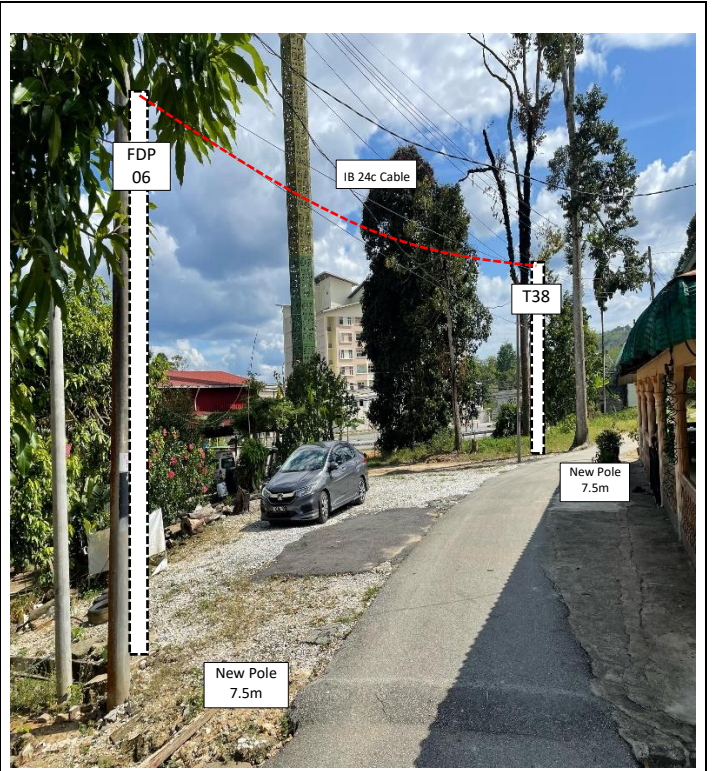
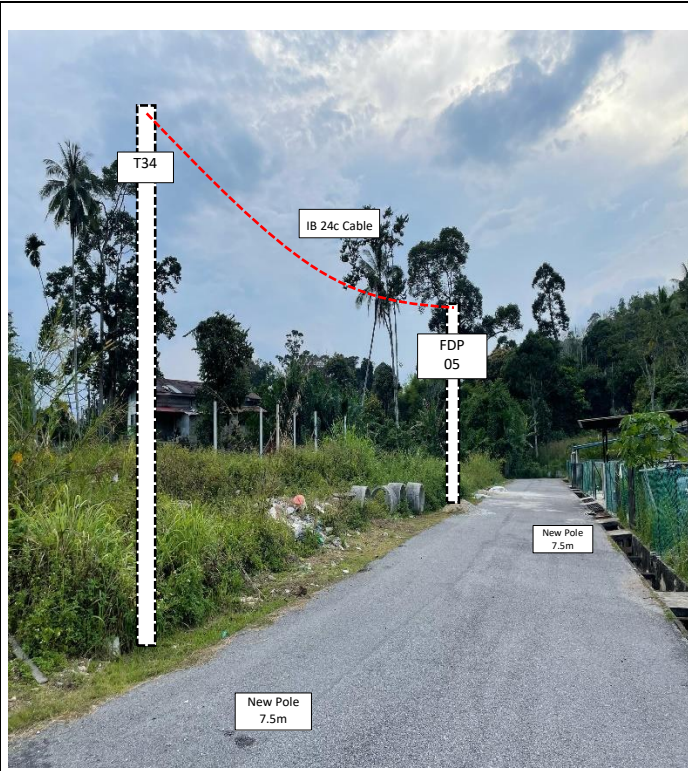


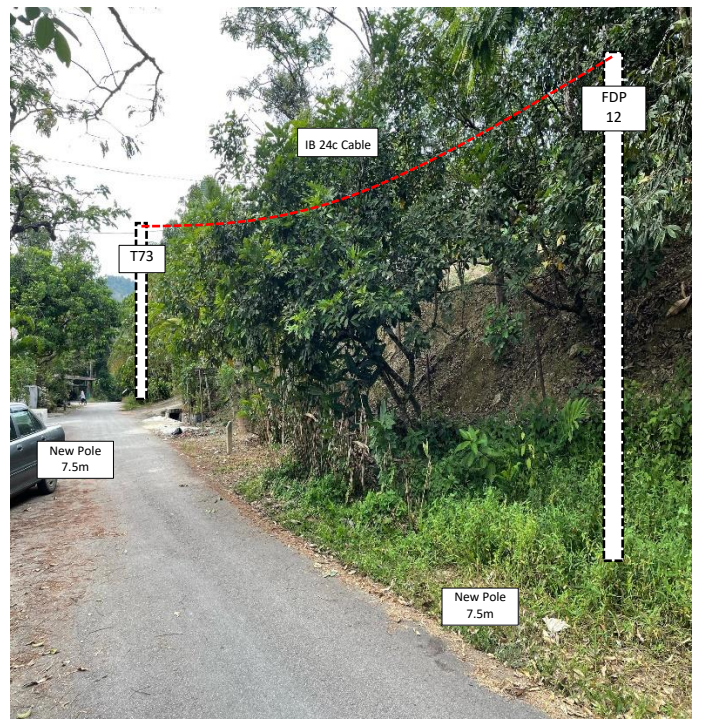
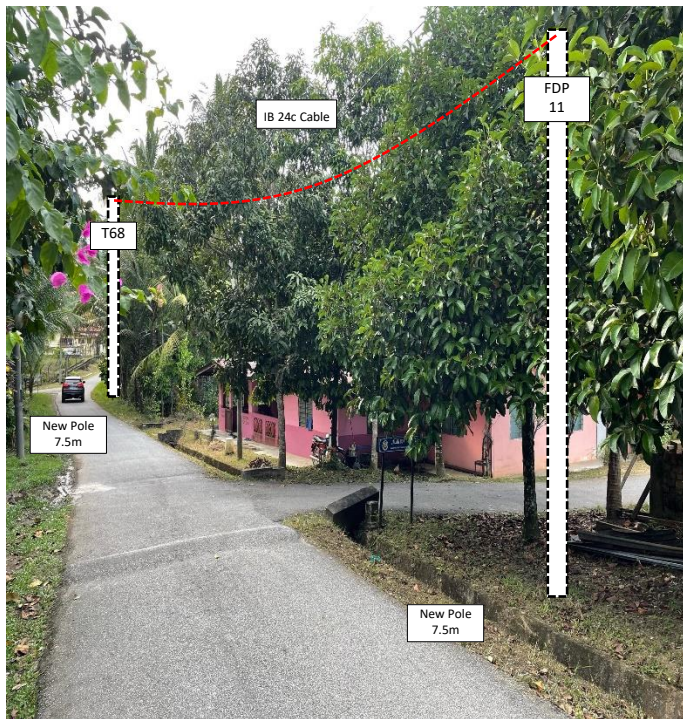
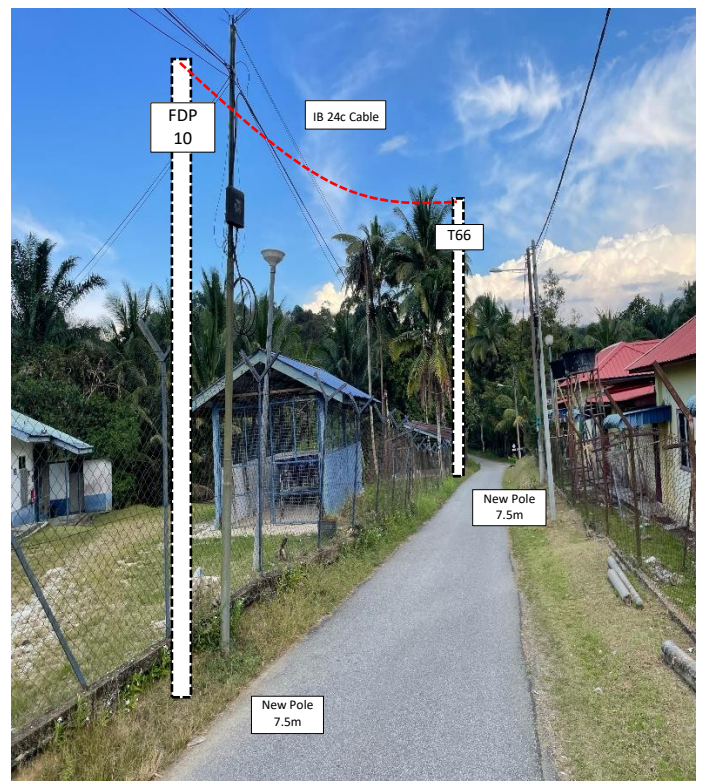
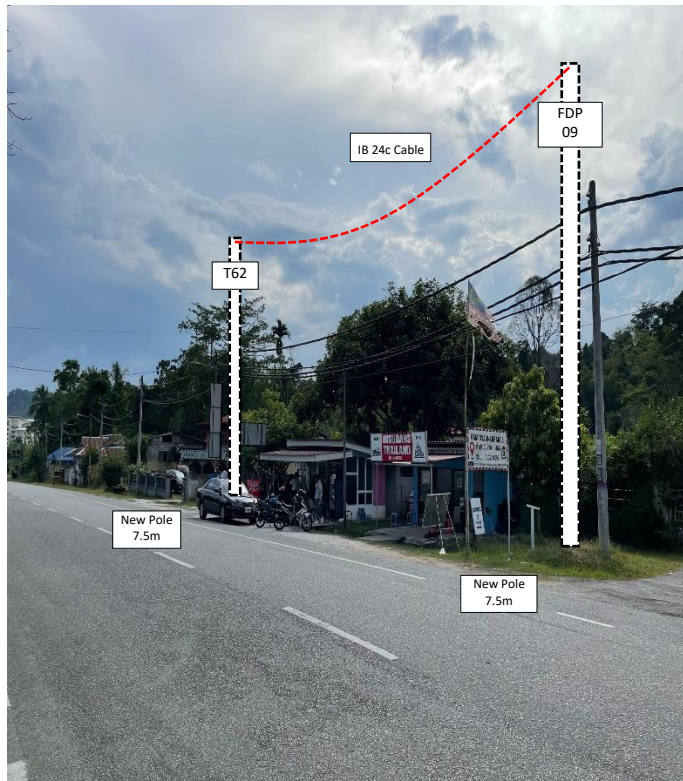
WABTECH SDN BHD  
(1398387-0)

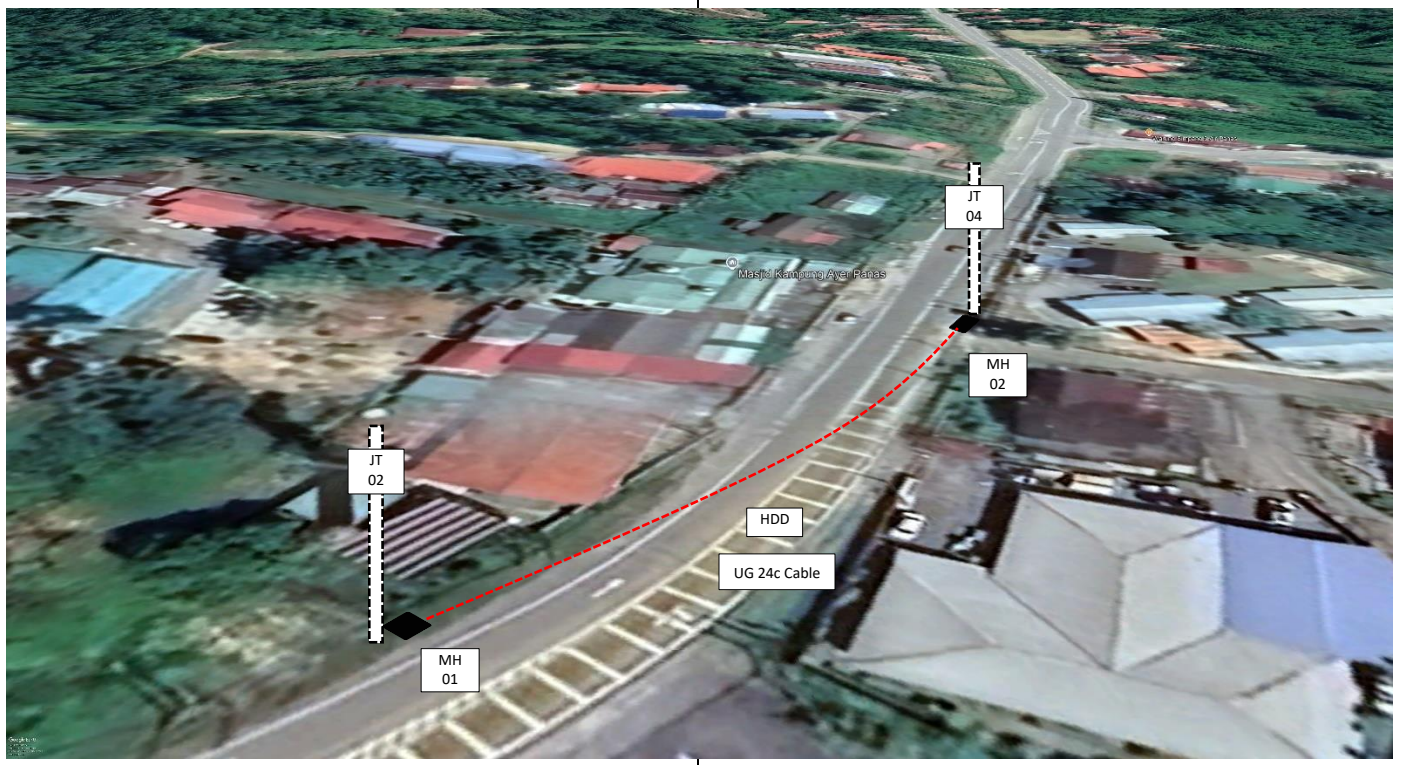
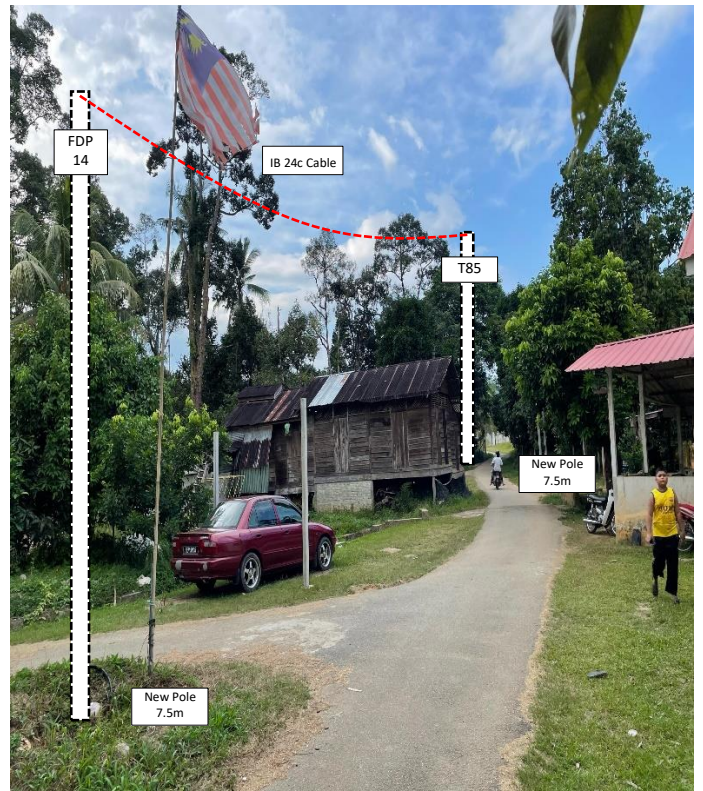
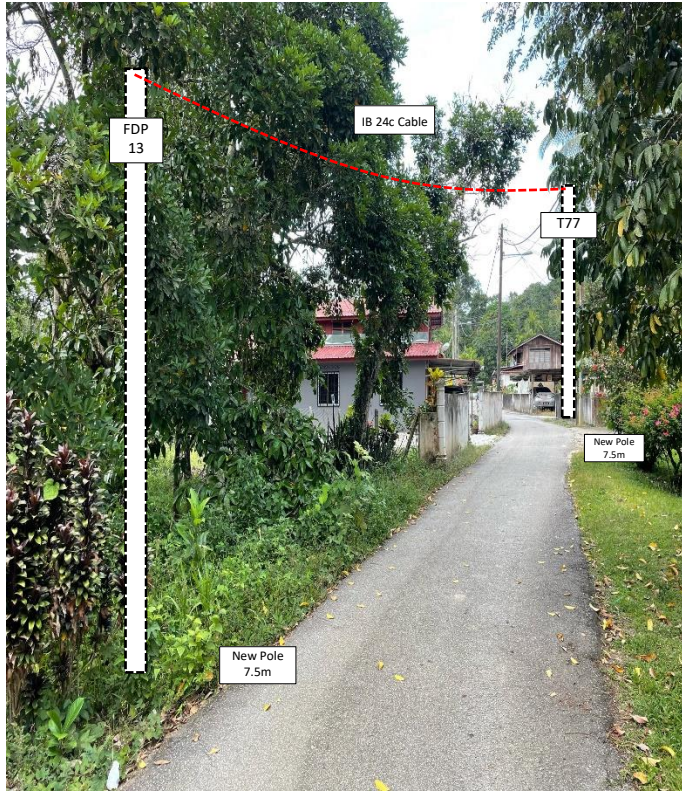
No.	Pole Number	Distance (m)	Latitude	Longitude	Local Authority
82	T081	30	5.723286	101.017993	Majlis Daerah Pengkalan Hulu
83	T082	31	5.723024	101.018048	Majlis Daerah Pengkalan Hulu
84	T083	29	5.722759	101.018142	Majlis Daerah Pengkalan Hulu
85	T084	24	5.722500	101.018181	Majlis Daerah Pengkalan Hulu
86	T085	33	5.722290	101.018230	Majlis Daerah Pengkalan Hulu
87	T086	33	5.721995	101.018257	Majlis Daerah Pengkalan Hulu
88	MH01	80	5.725625	101.015659	JKR
89	MH02	80	5.726143	101.016159	JKR

**5.0 SITE PHOTOS - PROPOSED NEW POLE**











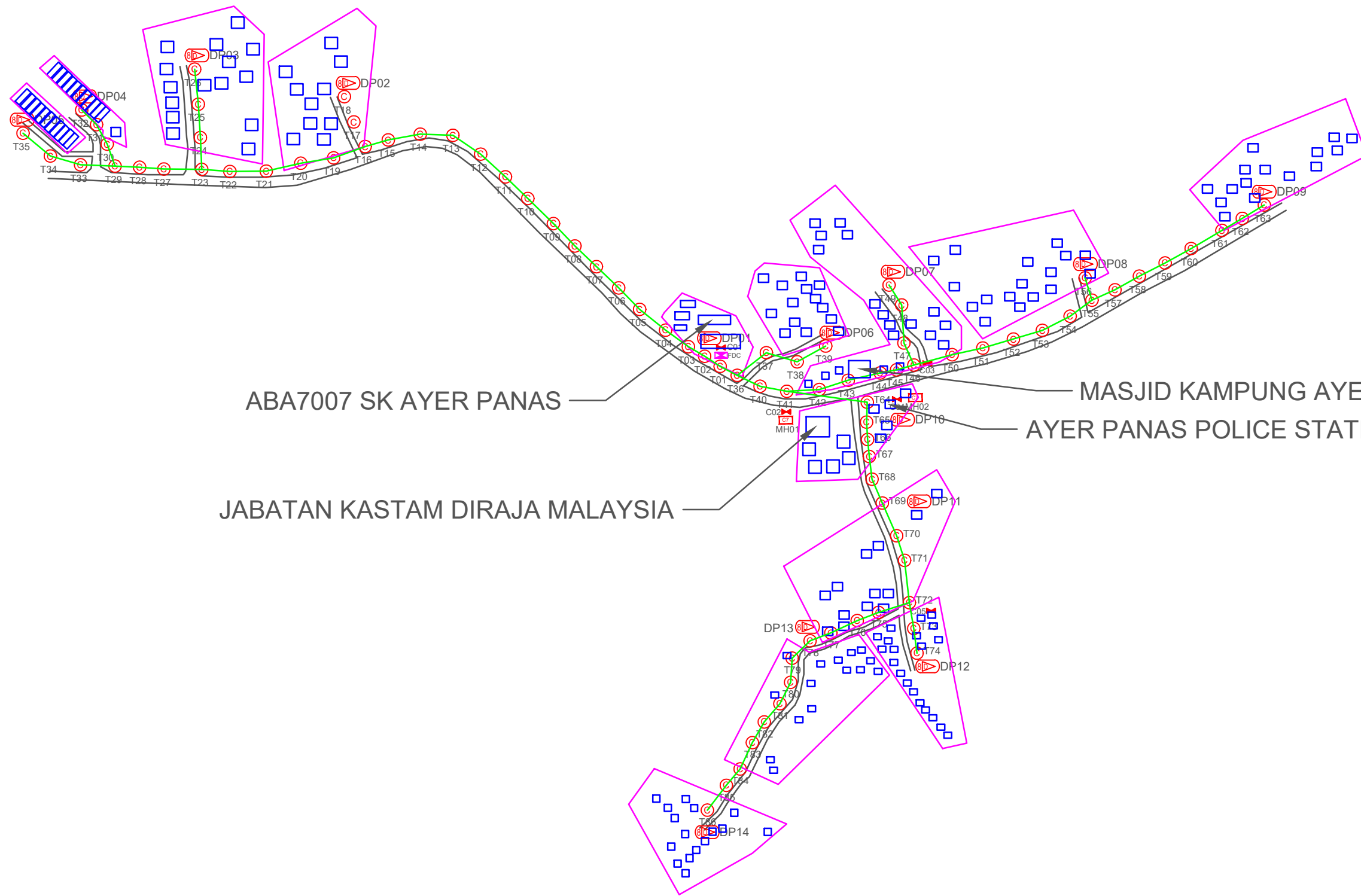
PROJEK PENYEDIAAN DAN PENYELENGGARAAN POINT OF PRESENCE (POP)  
FASA 2: HAB INFRASTRUTUK GENTIAN OPTIK BERHAMPIRAN DENGAN  
SEKOLAH, KAWASAN PERINDUSTRIAN, PREMIS KERAJAAN DAN KOMUNITI  
SEKITARNYA OLEH KEMENTERIAN KOMUNIKASI MALAYSIA – ZON UTARA  
(KKMM.400-11/17/132(1))



WABTECH SDN BHD  
(1398387-X)

## 6.0 3<sup>rd</sup> PARTIES DEPENDENCIES

NO	LOCAL COUNCIL / AUTHORITY	REMARK
1	Majlis Daerah Pengkalan Hulu	1263m
2	JKR Daerah Pengkalan Hulu	1469m



ABA7007 SK AYER PANAS

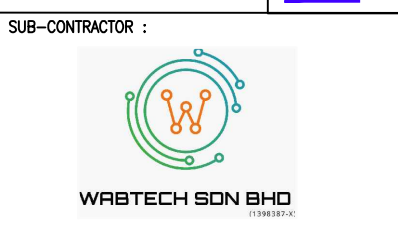
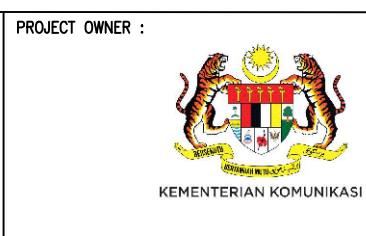
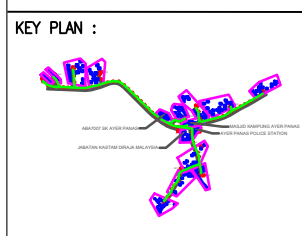
MASJID KAMPUNG AYER PANAS

AYER PANAS POLICE STATION

JABATAN KASTAM DIRAJA MALAYSIA

**TOTAL HOME PASSES: 112 UNITS**

LEGEND											
	12C FOC		Installed 1:4 splitter in FDC		Installed Pole (9m)		New Manhole(JRC7)		Tension Small / Tension Big		MH NO.
	24C FOC		FDP with (1:8) splitter		Installed Riser		House Number		Existing Manhole		Existing TNB Pole NO.
	48C FOC		Closure		Suspension Big		Existing TNB Pole		Closure NO.		New Pole NO.
	96C FOC		New Manhole (PIT)		Suspension Small		LOOP		FDP NO.		SEE A-A in this page
	144C FOC		Installed Pole (7.5M)		FDC		FDP Boundary		FDC NO.		SEE SHEET XXXX



PROJECT TITLE:

CONTRACT FOR THE PROVISION OF SUPPLY, INSTALLATION, AND COMMISSIONING OF FTTX NETWORK INFRASTRUCTURE - POP 2 PROJECT D-SIDE - ABA7007 - SK AYER PANAS

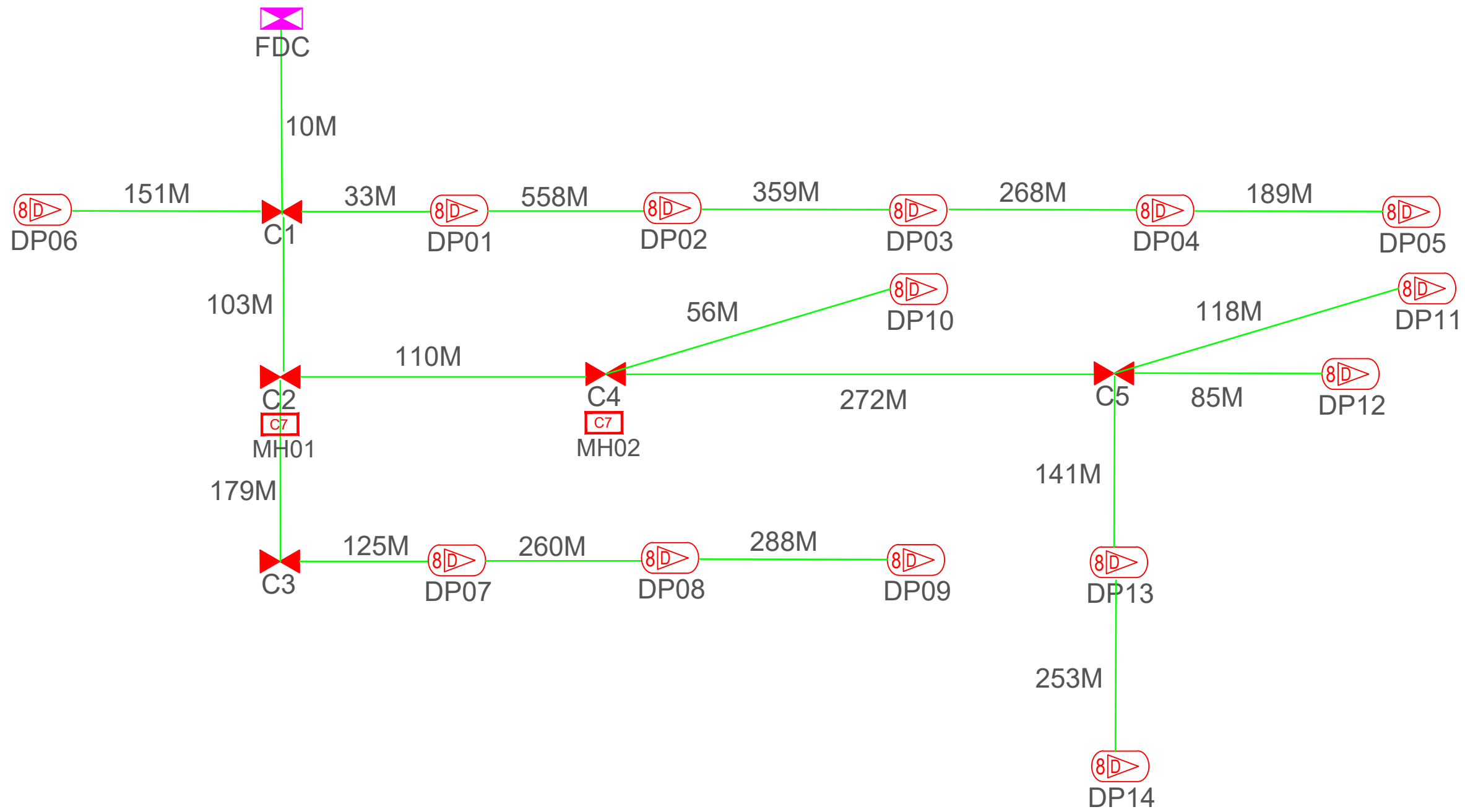
DRAWING TITLE:

ABA7007 SK AYER PANAS

PROJECT PHASE:

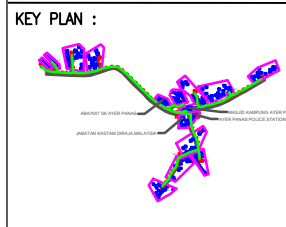
PROJECT PHASE

Design By	ENGINEER	Date	DATE
Drawn By	CAD ENGINEER	Scale	NTS
Checked By	ENGINEER	Job Number	JOB/NUMBER
DRAWING NUMBER :		Sheet :	
DRAWING/NUMBER		1/1	
THIS PRINT AND ITS COPYRIGHT ARE THE PROPERTY		Size :	
		A3	



**TOTAL FOC DISTANCE: 3,548 METERS**

LEGEND	
	12C FOC
	24C FOC
	48C FOC
	96C FOC
	144C FOC
	Installed 1:4 splitter in FDC
	FDP with (1:8) splitter
	Closure
	New Manhole (PT)
	Installed Pole (7.5M)
	Installed Pole (9m)
	Installed Riser
	Suspension Big
	Suspension Small
	FDC
	New Manhole(JRC7)
	House Number
	Existing TNB Pole
	LOOP
	FDP Boundary
	Tension Small / Tension Big
	Existing Manhole
	Closure NO.
	FDP NO.
	FDC NO.
	MH NO.
	Existing TNB Pole NO.
	New Pole NO.
	SEE A-A in this page
	SEE SHEET XXXX



PROJECT OWNER :

MAIN CONTRACTOR

PRIVASAT

SUB-CONTRACTOR :

PROJECT TITLE:

CONTRACT FOR THE PROVISION OF SUPPLY, INSTALLATION, AND COMMISSIONING OF FTTX NETWORK INFRASTRUCTURE - POP 2 PROJECT D-SIDE - ABA7007 - SK AYER PANAS

DRAWING TITLE:

**ABA7007 SK AYER PANAS**

PROJECT PHASE:

**PROJECT PHASE**

Design By	ENGINEER	Date	DATE
Drawn By	CAD ENGINEER	Scale	NTS
Checked By	ENGINEER	Job Number	JOB/NUMBER
DRAWING NUMBER :		Sheet :	
<b>DRAWING/NUMBER</b>		<b>1/1</b>	
THIS PRINT AND ITS COPYRIGHT ARE THE PROPERTY			
Size : <b>A3</b>			