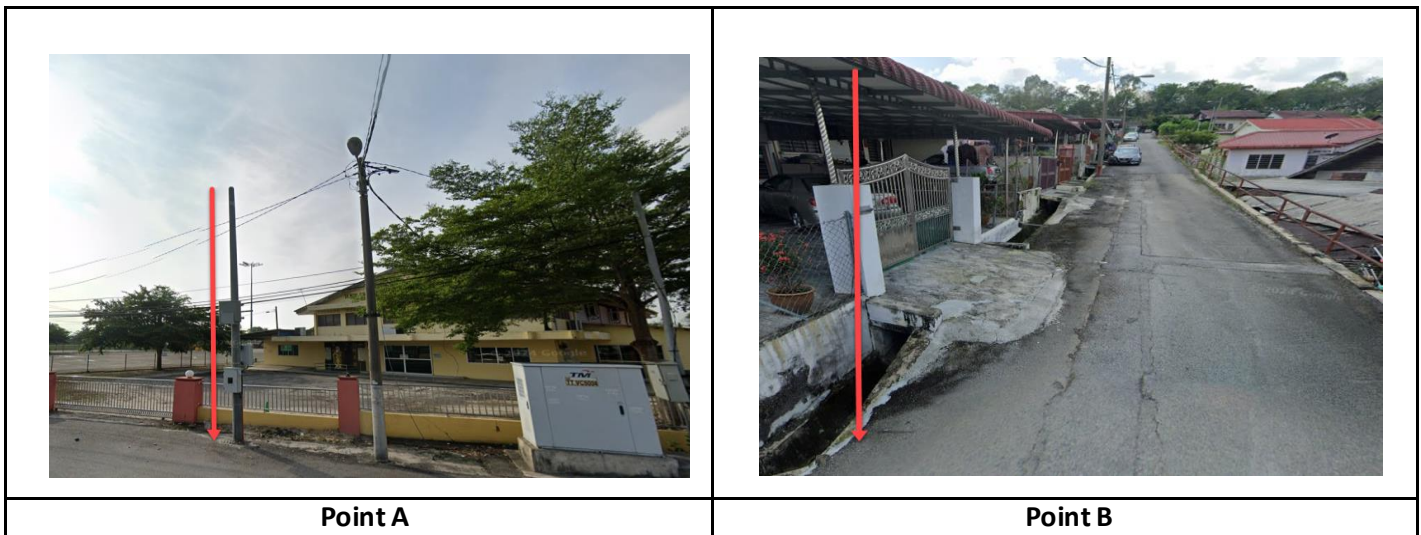


## TECHNICAL PROPOSAL

### POP2 ABC2139 SEKOLAH JENIS KEBANGSAAN (CINA) THUNG HON (D-SIDE)

Company Name	:	SEGALA DELIMA (M) SDN BHD
Company Address	:	No. 8, Jalan Ampang Baru 6B, Pusat Perdagangan Baru, 31350 Ipoh, Perak
Prepared By	:	Nasrohaizan Bin Mustaffa
Date	:	5/12/2024



#### Starting Point

Site / Boundary Name	:	Sekolah Jenis Kebangsaan (C) Thung Hon
District	:	Tanjung Tualang
Postcode	:	31800
State	:	Perak
GPS Coordinate	:	<a href="#">4.326066, 101.056995</a>
LRD	:	A

#### End Point

Site / Boundary Name	:	Taman Seri Tualang
Address	:	Tanjung Tualang
District	:	Tanjung Tualang
Postcode	:	31800
State	:	Perak
GPS Coordinate	:	<a href="#">4.322667, 101.055183</a>
LRD	:	B

## 1.0 WORK SUMMARY

NO	PROPOSED DISTANCE AND METHOD	UNIT	QUANTITY
1	Horizontal Directional Drilling (HDD)	m	35
2	Carriage Way Open Trench(CW)	m	0
3	Grass Verge Open Trenching (GV)	m	0
4	Micro Trenching (MT)	m	0
Total			35

NO	OTHER INFORMATION	UNIT	QUANTITY
1	Installation of Short Span ADSS Fiber Cables	m	1730
2	Install New Pole	ea	71
3	Install New JRC7 Manhole	ea	0
4	Install GI Riser 100mm	ea	0
5	Install Fiber Distribution Point and Closure (Splicing, Termination and Testing)	ea	16
6	Estimated Time Required for Completion	days	30

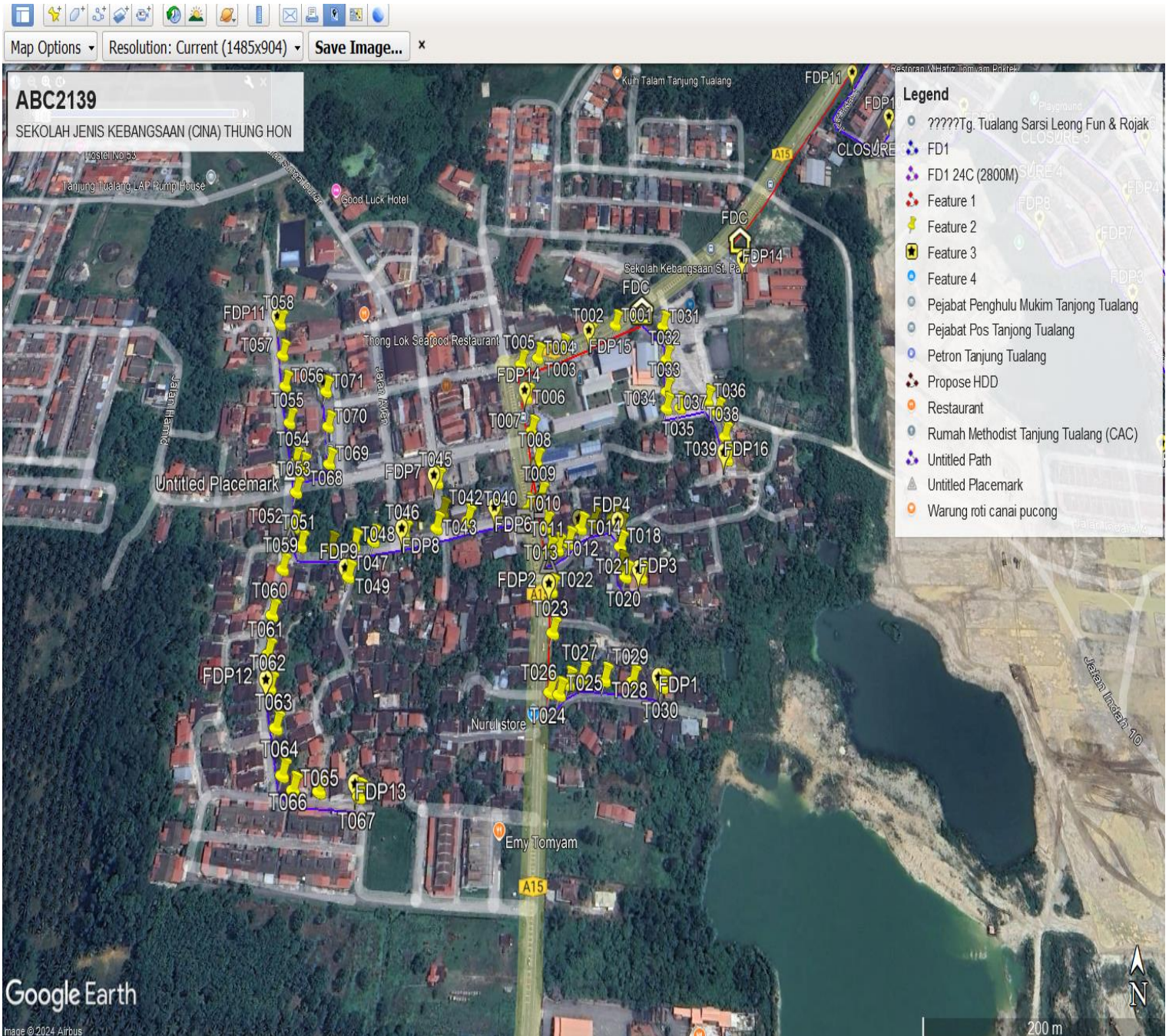
## 2.0 LOCAL AUTHORITY SUMMARY

Daerah Batu Gajah

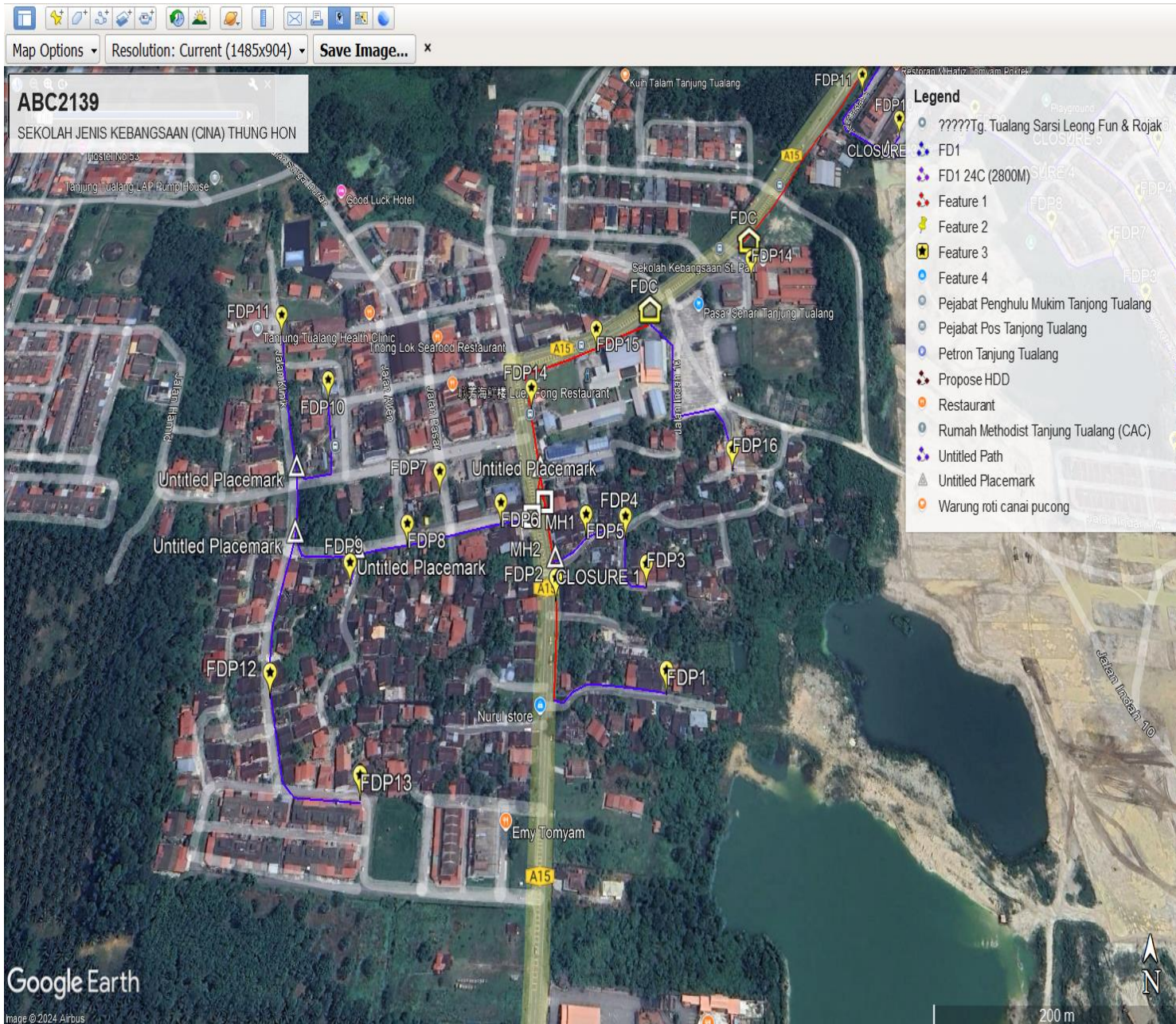
NO	ITEMS	Owner	Quantity	Distance (m)
1	HDD	JKR	1	35m
		Majlis	-	-
		Estate / Private Land	-	-
2	New Pole	JKR	14	445m
		Majlis	57	1250m
		Estate / Private Land	-	-
<b>Total Distance (m)</b>				<b>1730</b>

### 3.0 SITE PLAN (KMZ)

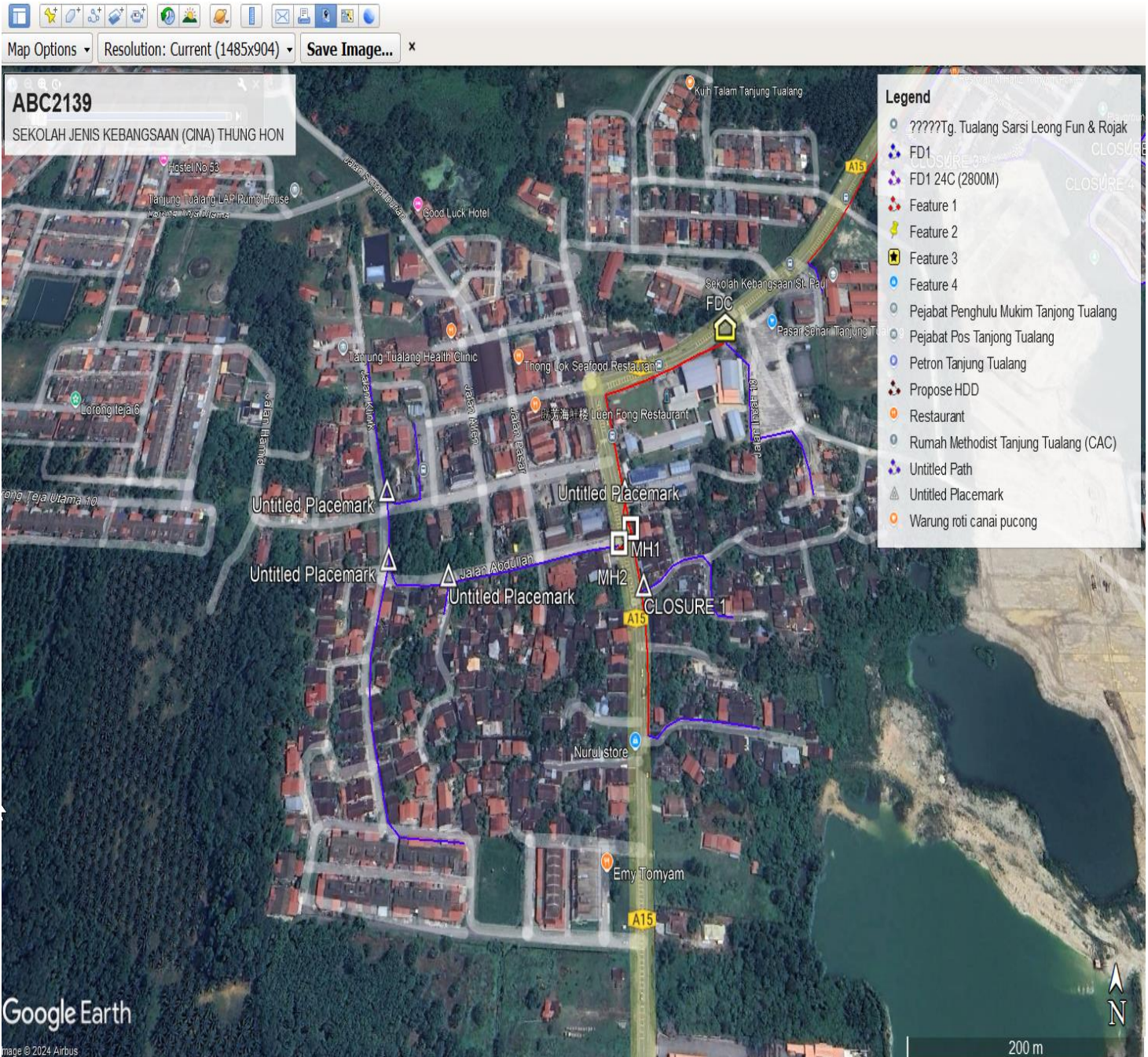
#### 3.1 Overview Site Area (Propose New Pole)



### 3.2 Proposed FDP and Closure



### 3.3 Site Plan - KMZ Routing (All Local Authority)



Red Colour - JKR Road  
Blue Colour - Majlis Road

#### 4.0 PROPOSED NEW MANHOLE

Proposed New Manhole Coordinate					
No.	Manhole Number	Distance (m)	Latitude	Longitude	Local Authority
1	MH01	0	4.324663	101.056591	JKR Perak Tengah
2	MH02	35	4.324551	101.056481	JKR Perak Tengah

#### 4.1 PROPOSED NEW POLE

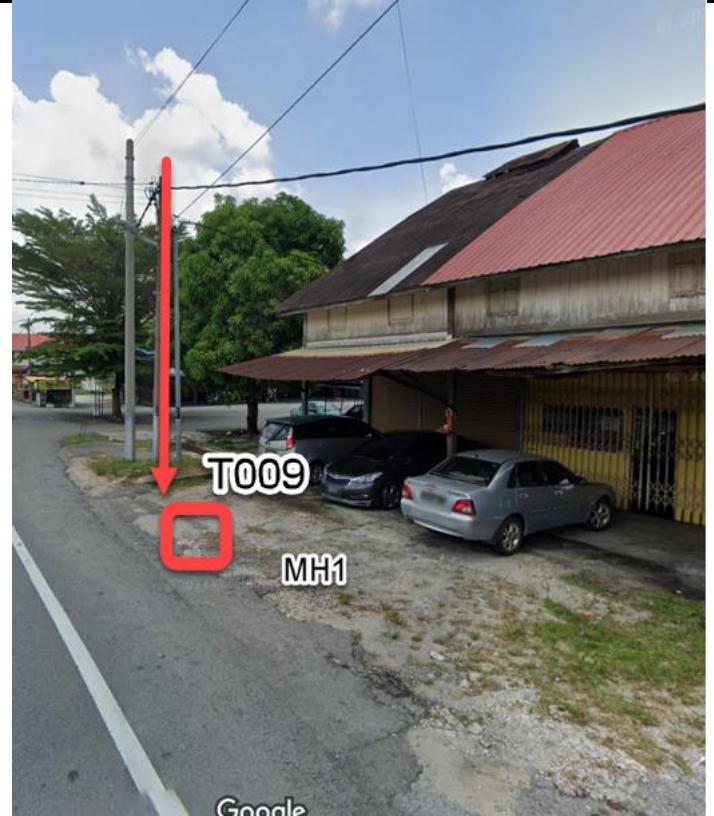
Proposed New Pole Coordinate					
No.	Pole Number	Distance (m)	Latitude	Longitude	Local Authority
1	T001	35m	4.326121	101.057280	JKR Perak Tengah
2	T002	35m	4.326014	101.057033	JKR Perak Tengah
3	T003	35m	4.325905	101.056770	JKR Perak Tengah
4	T004	35m	4.325828	101.056535	JKR Perak Tengah
5	T005	35m	4.325772	101.056376	JKR Perak Tengah
6	T006	35m	4.325482	101.056440	JKR Perak Tengah
7	T007	35m	4.325209	101.056492	JKR Perak Tengah
8	T008	35m	4.324956	101.056547	JKR Perak Tengah
9	T009	35m	4.324690	101.056590	JKR Perak Tengah
10	T010	35m	4.324463	101.056639	JKR Perak Tengah
11	T011	35m	4.324272	101.056674	JKR Perak Tengah
12	T012	35m	4.324297	101.056747	JKR Perak Tengah
13	T013	35m	4.324345	101.056842	JKR Perak Tengah
14	T014	35m	4.324452	101.056950	JKR Perak Tengah
15	T015	35m	4.324495	101.057058	JKR Perak Tengah
16	T016	35m	4.324526	101.057233	JKR Perak Tengah
17	T017	35m	4.324452	101.057303	JKR Perak Tengah
18	T018	35m	4.324316	101.057297	JKR Perak Tengah
19	T019	35m	4.324161	101.057299	JKR Perak Tengah
20	T020	35m	4.324096	101.057339	JKR Perak Tengah
21	T021	35m	4.324093	101.057476	JKR Perak Tengah
22	T022	35m	4.323994	101.056698	JKR Perak Tengah
23	T023	35m	4.323700	101.056713	JKR Perak Tengah
24	T024	35m	4.323302	101.056697	JKR Perak Tengah
25	T025	35m	4.323285	101.056774	JKR Perak Tengah
26	T026	35m	4.323353	101.056848	JKR Perak Tengah
27	T027	30m	4.323396	101.056962	Majlis Daerah Batu Gajah
28	T028	30m	4.323380	101.057151	Majlis Daerah Batu Gajah
29	T029	30m	4.323370	101.057383	Majlis Daerah Batu Gajah
30	T030	30m	4.323339	101.057632	Majlis Daerah Batu Gajah
31	T031	30m	4.326111	101.057742	Majlis Daerah Batu Gajah
32	T032	30m	4.325818	101.057763	Majlis Daerah Batu Gajah
33	T033	30m	4.325544	101.057753	Majlis Daerah Batu Gajah

34	T034	30m	4.325398	101.057748	Majlis Daerah Batu Gajah
35	T035	30m	4.325406	101.057875	Majlis Daerah Batu Gajah
36	T036	30m	4.325467	101.058136	Majlis Daerah Batu Gajah
37	T037	30m	4.325367	101.058223	Majlis Daerah Batu Gajah
38	T038	30m	4.325168	101.058278	Majlis Daerah Batu Gajah
39	T039	30m	4.324987	101.058287	Majlis Daerah Batu Gajah
40	T040	35m	4.324595	101.056477	JKR Perak Tengah
41	T041	30m	4.324555	101.056204	Majlis Daerah Batu Gajah
42	T042	30m	4.324503	101.055946	Majlis Daerah Batu Gajah
43	T043	30m	4.324448	101.055671	Majlis Daerah Batu Gajah
44	T044	30m	4.324558	101.055719	Majlis Daerah Batu Gajah
45	T045	30m	4.324793	101.055655	Majlis Daerah Batu Gajah
46	T046	30m	4.324390	101.055392	Majlis Daerah Batu Gajah
47	T047	30m	4.324349	101.055123	Majlis Daerah Batu Gajah
48	T048	30m	4.324318	101.054958	Majlis Daerah Batu Gajah
49	T049	30m	4.324091	101.054932	Majlis Daerah Batu Gajah
50	T050	30m	4.324292	101.054760	Majlis Daerah Batu Gajah
51	T051	30m	4.324284	101.054503	Majlis Daerah Batu Gajah
52	T052	30m	4.324425	101.054425	Majlis Daerah Batu Gajah
53	T053	30m	4.324690	101.054404	Majlis Daerah Batu Gajah
54	T054	30m	4.324928	101.054360	Majlis Daerah Batu Gajah
55	T055	30m	4.325234	101.054266	Majlis Daerah Batu Gajah
56	T056	30m	4.325534	101.054184	Majlis Daerah Batu Gajah
57	T057	30m	4.325795	101.054121	Majlis Daerah Batu Gajah
58	T058	30m	4.326061	101.054060	Majlis Daerah Batu Gajah
59	T059	30m	4.324109	101.054375	Majlis Daerah Batu Gajah
60	T060	30m	4.323781	101.054336	Majlis Daerah Batu Gajah
61	T061	30m	4.323507	101.054350	Majlis Daerah Batu Gajah
62	T062	30m	4.323280	101.054403	Majlis Daerah Batu Gajah
63	T063	30m	4.323028	101.054492	Majlis Daerah Batu Gajah
64	T064	30m	4.322734	101.054586	Majlis Daerah Batu Gajah
65	T065	30m	4.322646	101.054686	Majlis Daerah Batu Gajah
66	T066	30m	4.322645	101.054886	Majlis Daerah Batu Gajah
67	T067	30m	4.322633	101.055194	Majlis Daerah Batu Gajah
68	T068	30m	4.324875	101.054438	Majlis Daerah Batu Gajah
69	T069	30m	4.324924	101.054665	Majlis Daerah Batu Gajah
70	T070	30m	4.325225	101.054615	Majlis Daerah Batu Gajah
71	T071	30m	4.325512	101.054561	Majlis Daerah Batu Gajah

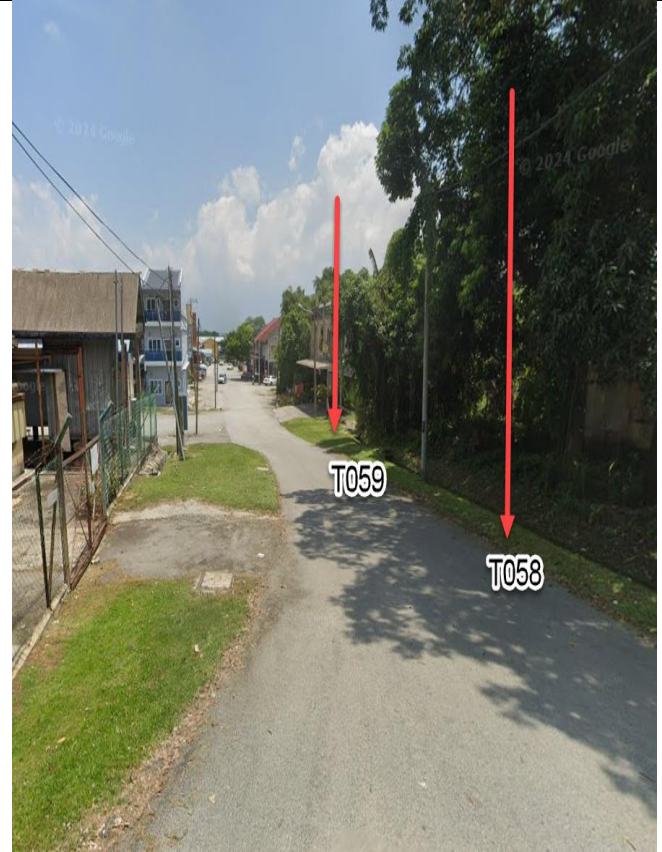
### 5.0 SITE PHOTOS - PROPOSED HDD AND NEW MANHOLE



**6.0 SITE PHOTOS - PROPOSED NEW POLE**







NO	LOCAL COUNCIL / AUTHORITY	REMARK
1	Majlis Daerah Batu Gajah	1250m
2	JKR Daerah Kinta	480m



