

## TECHNICAL PROPOSAL

### POP2 ABA3011 SEKOLAH KEBANGSAAN SUNGAI BOGAK (D-SIDE)

**Company Name** : T&H PANJI EMPIRE SDN BHD  
**Company Address** : 39A Jalan Jelapang 5, Pusat Komersial Jelapang, 30020 Ipoh, Perak Darul Ridzuan.  
**Prepared By** : Mat Salleh Bin Mat Zain  
**Date** : 18/4/2025



#### Starting Point

Site / Boundary Name : KERIAN  
 Address : SK SUNGAI BOGAK  
 District : BAGAN SERAI  
 Postcode : 34300  
 State : Perak  
 GPS Coordinate : 5.045217, 100.517317  
 LRD : A

#### End Point

Site / Boundary Name : KERIAN  
 Address : KAMPUNG PARIT JAWA  
 District : BAGAN SERAI  
 Postcode : 36200  
 State : Perak  
 GPS Coordinate : 5.042648, 100.495226  
 LRD : B



PROJEK PENYEDIAAN DAN PENYELENGGARAAN POINT OF PRESENT (POP) FASA 2: HAB INFRASTRUKTUR GENTIAN OPTIK BERHAMPIRAN DENGAN SEKOLAH, KAWASAN PERINDUSTRIAN, PREMIS KERAJAAN DAN KOMUNITI SEKITARNYA OLEH KEMENTERIAN KOMUNIKASI MALAYSIA - ZON UTARA (KKMM.400-11/17/132(1))



## 1.0 WORK SUMMARY

NO	PROPOSED DISTANCE AND METHOD	UNIT	QUANTITY
1	Horizontal Directional Drilling (HDD)	m	60
2	Carriage Way Open Trench (CW)	m	0
3	Grass Verge Open Trenching (GV)	m	0
4	Micro Trenching (MT)	m	0
Total			60

NO	OTHER INFORMATION	UNIT	QUANTITY
1	Installation of Short Span ADSS Fiber Cables	m	8000
2	Install New Pole	ea	206
3	Install New JRC7 Manhole	ea	2
4	Install GI Riser 100mm	ea	0
5	Install Fiber Distribution Point	ea	13
6	Closure (Splicing, Termination and Testing)	ea	4



PROJEK PENYEDIAAN DAN PENYELENGGARAAN POINT OF PRESENT (POP) FASA 2: HAB INFRASTRUKTUR GENTIAN OPTIK BERHAMPIRAN DENGAN SEKOLAH, KAWASAN PERINDUSTRIAN, PREMIS KERAJAAN DAN KOMUNITI SEKITARNYA OLEH KEMENTERIAN KOMUNIKASI MALAYSIA - ZON UTARA (KKMM.400-11/17/132(1))



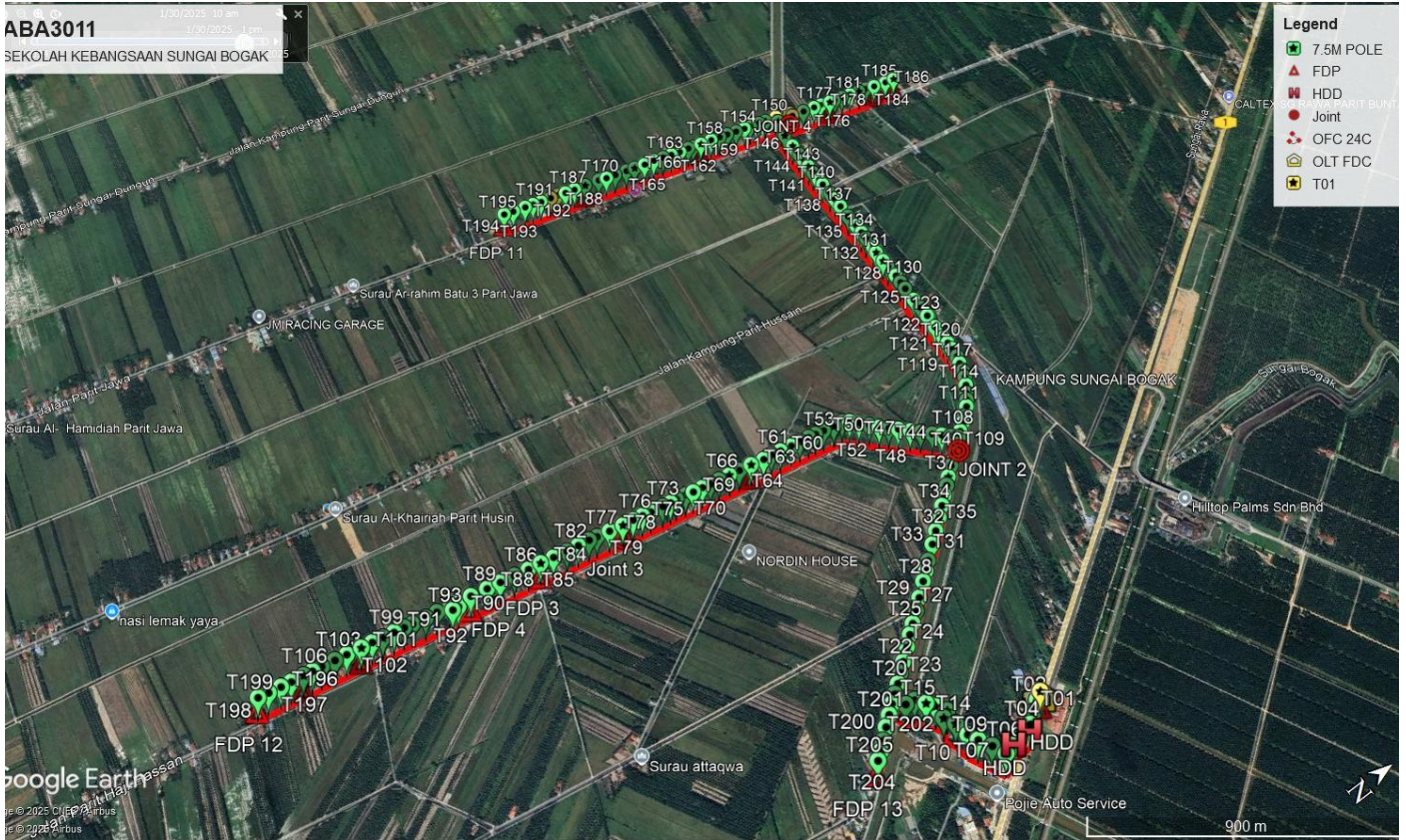
## 2.0 LOCAL AUTHORITY SUMMARY

Majlis Perbandaran Teluk Intan & JKR Teluk Intan

NO	ITEMS	Owner	Quantity	Distance (m)
1	HDD	JKR	1	60
		Majlis	-	-
		Estate / Private Land	-	-
2	New Pole	JKR	6	140
		Majlis	200	7800
		Estate / Private Land	-	-
<b>Total Distance (m)</b>				<b>8000M</b>

### 3.0 SITE PLAN (KMZ)

#### 3.1 Overview Site Area





3.3 Site Plan - KMZ Routing (All Local Authority)



Red Colour - Majlis Road



PROJEK PENYEDIAAN DAN PENYELENGGARAAN POINT OF PRESENT (POP) FASA 2: HAB INFRASTRUKTUR GENTIAN OPTIK BERHAMPIRAN DENGAN SEKOLAH, KAWASAN PERINDUSTRIAN, PREMIS KERAJAAN DAN KOMUNITI SEKITARNYA OLEH KEMENTERIAN KOMUNIKASI MALAYSIA - ZON UTARA (KKMM.400-11/17/132(1))



#### 4.0 PROPOSED NEW MANHOLE

Proposed New Manhole Coordinate					
No.	Manhole Number	Distance (m)	Latitude	Longitude	Local Authority
1	MH01	60	5.044351	100.517793	JKR KERIAN
2	MH02	-	5.043776	100.517782	JKR KERIAN

## 5.0 PROPOSED NEW POLE

Proposed New Pole Coordinate					
No.	Pole Number	Distance (m)	Latitude	Longitude	Local Authority
1	T001 (OLT&FDC)	4	5.045217	100.517317	JKR KERIAN
2	T002 (FDP 1)	28	5.044987	100.517431	JKR KERIAN
3	T003	44	5.044669	100.517610	JKR KERIAN
4	T004 (HDD)	41	5.044374	100.517786	JKR KERIAN
5	T005 (HDD)	63	5.043812	100.517779	JKR KERIAN
6	T006	27	5.043627	100.517902	JKR KERIAN
7	T007	32	5.043340	100.517953	MAJLIS PERBANDARAN KERIAN
8	T008	43	5.043187	100.517590	MAJLIS PERBANDARAN KERIAN
9	T009	42	5.043008	100.517252	MAJLIS PERBANDARAN KERIAN
10	T010	32	5.042888	100.516984	MAJLIS PERBANDARAN KERIAN
11	T011	46	5.042837	100.516579	MAJLIS PERBANDARAN KERIAN
12	T012	37	5.042689	100.516277	MAJLIS PERBANDARAN KERIAN
13	T013	25	5.042893	100.516189	MAJLIS PERBANDARAN KERIAN
14	T014	36	5.042732	100.515914	MAJLIS PERBANDARAN KERIAN
15	T015	29	5.042585	100.515700	MAJLIS PERBANDARAN KERIAN
16	T016	35	5.042396	100.515457	MAJLIS PERBANDARAN KERIAN
17	T017	15	5.042303	100.515361	MAJLIS PERBANDARAN KERIAN
18	T018	19	5.042135	100.515397	MAJLIS PERBANDARAN KERIAN
19	T019	45	5.042087	100.515015	MAJLIS PERBANDARAN KERIAN
20	T020	34	5.042348	100.514852	MAJLIS PERBANDARAN KERIAN
21	T021	36	5.042605	100.514667	MAJLIS PERBANDARAN KERIAN
22	T022	37	5.042874	100.514485	MAJLIS PERBANDARAN KERIAN
23	T023	40	5.043223	100.514243	MAJLIS PERBANDARAN KERIAN
24	T024	37	5.043523	100.514032	MAJLIS PERBANDARAN KERIAN
25	T025	43	5.043798	100.513843	MAJLIS PERBANDARAN KERIAN
26	T026	45	5.044117	100.513630	MAJLIS PERBANDARAN KERIAN
27	T027	53	5.044442	100.513400	MAJLIS PERBANDARAN KERIAN
28	T028	37	5.044854	100.513108	MAJLIS PERBANDARAN KERIAN
29	T029	36	5.045120	100.512927	MAJLIS PERBANDARAN KERIAN
30	T030	54	5.045383	100.512740	MAJLIS PERBANDARAN KERIAN
31	T031	48	5.045813	100.512445	MAJLIS PERBANDARAN KERIAN
32	T032	47	5.046167	100.512199	MAJLIS PERBANDARAN KERIAN
33	T033	44	5.046521	100.511956	MAJLIS PERBANDARAN KERIAN
34	T034	37	5.046846	100.511728	MAJLIS PERBANDARAN KERIAN
35	T035	37	5.047119	100.511529	MAJLIS PERBANDARAN KERIAN
36	T036	32	5.047392	100.511340	MAJLIS PERBANDARAN KERIAN
37	T037	33	5.047621	100.511166	MAJLIS PERBANDARAN KERIAN
38	T038	27	5.047856	100.511004	MAJLIS PERBANDARAN KERIAN
39	T039	31	5.048049	100.510864	MAJLIS PERBANDARAN KERIAN
40	T040	37	5.048273	100.510709	MAJLIS PERBANDARAN KERIAN
41	T041	27	5.048544	100.510510	MAJLIS PERBANDARAN KERIAN
42	TO42 (JOINT 2)	26	5.048758	100.510398	MAJLIS PERBANDARAN KERIAN
43	T043	29	5.048597	100.510231	MAJLIS PERBANDARAN KERIAN
44	T044	32	5.048414	100.510039	MAJLIS PERBANDARAN KERIAN

**Proposed New Pole Coordinate**

No.	Pole Number	Distance (m)	Latitude	Longitude	Local Authority
45	T045	39	5.048214	100.509841	MAJLIS PERBANDARAN KERIAN
46	T046	34	5.047986	100.509585	MAJLIS PERBANDARAN KERIAN
47	T047	40	5.047771	100.509358	MAJLIS PERBANDARAN KERIAN
48	T048	32	5.047529	100.509101	MAJLIS PERBANDARAN KERIAN
49	T049	31	5.047334	100.508901	MAJLIS PERBANDARAN KERIAN
50	T050	33	5.047129	100.508700	MAJLIS PERBANDARAN KERIAN
51	T051	35	5.046940	100.508469	MAJLIS PERBANDARAN KERIAN
52	T052	31	5.046741	100.508230	MAJLIS PERBANDARAN KERIAN
53	T053	25	5.046555	100.508019	MAJLIS PERBANDARAN KERIAN
54	T054	32	5.046374	100.507889	MAJLIS PERBANDARAN KERIAN
55	T055	39	5.046083	100.507851	MAJLIS PERBANDARAN KERIAN
56	T056	31	5.045744	100.507775	MAJLIS PERBANDARAN KERIAN
57	T057	27	5.045472	100.507727	MAJLIS PERBANDARAN KERIAN
58	T058	32	5.045237	100.507684	MAJLIS PERBANDARAN KERIAN
59	T059	32	5.044945	100.507636	MAJLIS PERBANDARAN KERIAN
60	T060	40	5.044661	100.507583	MAJLIS PERBANDARAN KERIAN
61	T061	35	5.044309	100.507515	MAJLIS PERBANDARAN KERIAN
62	T062	30	5.044008	100.507454	MAJLIS PERBANDARAN KERIAN
63	T063	45	5.043737	100.507430	MAJLIS PERBANDARAN KERIAN
64	T064 (FDP 2)	44	5.043342	100.507336	MAJLIS PERBANDARAN KERIAN
65	T065	37	5.042952	100.507274	MAJLIS PERBANDARAN KERIAN
66	T066	38	5.042623	100.507218	MAJLIS PERBANDARAN KERIAN
67	T067	32	5.042289	100.507157	MAJLIS PERBANDARAN KERIAN
68	T068	29	5.042009	100.507115	MAJLIS PERBANDARAN KERIAN
69	T069	33	5.041752	100.507060	MAJLIS PERBANDARAN KERIAN
70	T070	27	5.041457	100.507016	MAJLIS PERBANDARAN KERIAN
71	T071	33	5.041226	100.506956	MAJLIS PERBANDARAN KERIAN
72	T072	22	5.040935	100.506902	MAJLIS PERBANDARAN KERIAN
73	T073	28	5.040736	100.506880	MAJLIS PERBANDARAN KERIAN
74	T074	41	5.040488	100.506835	MAJLIS PERBANDARAN KERIAN
75	T075	29	5.040117	100.506760	MAJLIS PERBANDARAN KERIAN
76	T076	34	5.039859	100.506711	MAJLIS PERBANDARAN KERIAN
77	T077	36	5.039562	100.506663	MAJLIS PERBANDARAN KERIAN
78	T078 (JOINT 3)	46	5.039236	100.506618	MAJLIS PERBANDARAN KERIAN
79	T079	44	5.038829	100.506533	MAJLIS PERBANDARAN KERIAN
80	T080	27	5.038446	100.506455	MAJLIS PERBANDARAN KERIAN
81	T081	39	5.038209	100.506404	MAJLIS PERBANDARAN KERIAN
82	T082	40	5.037873	100.506350	MAJLIS PERBANDARAN KERIAN
83	T083	46	5.037519	100.506304	MAJLIS PERBANDARAN KERIAN
84	T084	44	5.037116	100.506223	MAJLIS PERBANDARAN KERIAN
85	T085 (FDP 3)	42	5.036734	100.506144	MAJLIS PERBANDARAN KERIAN
86	T086	47	5.036357	100.506094	MAJLIS PERBANDARAN KERIAN
87	T087	47	5.035941	100.506012	MAJLIS PERBANDARAN KERIAN
88	T088	44	5.035521	100.505937	MAJLIS PERBANDARAN KERIAN
89	T089	53	5.035128	100.505873	MAJLIS PERBANDARAN KERIAN

**Proposed New Pole Coordinate**

No.	Pole Number	Distance (m)	Latitude	Longitude	Local Authority
90	T090 (FDP 4)	43	5.034654	100.505779	MAJLIS PERBANDARAN KERIAN
91	T091	16	5.034265	100.505708	MAJLIS PERBANDARAN KERIAN
92	T092	20	5.034219	100.505836	MAJLIS PERBANDARAN KERIAN
93	T093	17	5.034042	100.505823	MAJLIS PERBANDARAN KERIAN
94	T094	42	5.034034	100.505672	MAJLIS PERBANDARAN KERIAN
95	T095	37	5.033663	100.505604	MAJLIS PERBANDARAN KERIAN
96	T096	43	5.033336	100.505556	MAJLIS PERBANDARAN KERIAN
97	T097	28	5.032958	100.505477	MAJLIS PERBANDARAN KERIAN
98	T098	33	5.032721	100.505428	MAJLIS PERBANDARAN KERIAN
99	T099	36	5.032435	100.505374	MAJLIS PERBANDARAN KERIAN
100	T0100	34	5.032116	100.505321	MAJLIS PERBANDARAN KERIAN
101	T0101	35	5.031817	100.505258	MAJLIS PERBANDARAN KERIAN
102	T0102 (FDP5)	47	5.031507	100.505211	MAJLIS PERBANDARAN KERIAN
103	T0103	37	5.031097	100.505138	MAJLIS PERBANDARAN KERIAN
104	T0104	42	5.030765	100.505083	MAJLIS PERBANDARAN KERIAN
105	T0105	28	5.030394	100.505019	MAJLIS PERBANDARAN KERIAN
106	T0106	27	5.030138	100.504976	MAJLIS PERBANDARAN KERIAN
107	T0107 (FDP 6)	40	5.029892	100.504934	MAJLIS PERBANDARAN KERIAN
108	T0108	34	5.048937	100.510273	MAJLIS PERBANDARAN KERIAN
109	T0109	26	5.049187	100.510112	MAJLIS PERBANDARAN KERIAN
110	T0110	40	5.049377	100.509980	MAJLIS PERBANDARAN KERIAN
111	T0111	25	5.049668	100.509771	MAJLIS PERBANDARAN KERIAN
112	T0112	28	5.049833	100.509611	MAJLIS PERBANDARAN KERIAN
113	T0113	34	5.049981	100.509433	MAJLIS PERBANDARAN KERIAN
114	T0114	32	5.050171	100.509218	MAJLIS PERBANDARAN KERIAN
115	T0115	28	5.050330	100.509000	MAJLIS PERBANDARAN KERIAN
116	T0116	33	5.050437	100.508797	MAJLIS PERBANDARAN KERIAN
117	T0117	30	5.050542	100.508539	MAJLIS PERBANDARAN KERIAN
118	T0118	35	5.050643	100.508311	MAJLIS PERBANDARAN KERIAN
119	T0119	31	5.050719	100.508027	MAJLIS PERBANDARAN KERIAN
120	T0120	27	5.050765	100.507772	MAJLIS PERBANDARAN KERIAN
121	T0121	54	5.050795	100.507550	MAJLIS PERBANDARAN KERIAN
122	T0122	59	5.050843	100.507111	MAJLIS PERBANDARAN KERIAN
123	T0123	45	5.050937	100.506651	MAJLIS PERBANDARAN KERIAN
124	T0124	45	5.050979	100.506303	MAJLIS PERBANDARAN KERIAN
125	T0125	60	5.051012	100.505943	MAJLIS PERBANDARAN KERIAN
126	T0126	33	5.051084	100.505466	MAJLIS PERBANDARAN KERIAN
127	T0127	35	5.051124	100.505200	MAJLIS PERBANDARAN KERIAN
128	T0128	51	5.051172	100.504917	MAJLIS PERBANDARAN KERIAN
129	T0129	34	5.051212	100.504506	MAJLIS PERBANDARAN KERIAN
130	T0130	47	5.051246	100.504231	MAJLIS PERBANDARAN KERIAN
131	T0131	28	5.051290	100.503846	MAJLIS PERBANDARAN KERIAN
132	T0132	50	5.051346	100.503623	MAJLIS PERBANDARAN KERIAN
133	T0133	34	5.051402	100.503226	MAJLIS PERBANDARAN KERIAN
134	T0134	38	5.051440	100.502950	MAJLIS PERBANDARAN KERIAN

**Proposed New Pole Coordinate**

No.	Pole Number	Distance (m)	Latitude	Longitude	Local Authority
135	T0135	55	5.051485	100.502638	MAJLIS PERBANDARAN KERIAN
136	T0136	58	5.051522	100.502188	MAJLIS PERBANDARAN KERIAN
137	T0137	44	5.051593	100.501725	MAJLIS PERBANDARAN KERIAN
138	T0138	35	5.051635	100.501383	MAJLIS PERBANDARAN KERIAN
139	T0139	54	5.051675	100.501100	MAJLIS PERBANDARAN KERIAN
140	T0140	30	5.051720	100.500669	MAJLIS PERBANDARAN KERIAN
141	T0141	42	5.051755	100.500433	MAJLIS PERBANDARAN KERIAN
142	T0142	34	5.051805	100.500072	MAJLIS PERBANDARAN KERIAN
143	T0143	34	5.051849	100.499770	MAJLIS PERBANDARAN KERIAN
144	T0144	36	5.051888	100.499477	MAJLIS PERBANDARAN KERIAN
145	T0145	47	5.051941	100.499168	MAJLIS PERBANDARAN KERIAN
146	T0146	59	5.052003	100.498758	MAJLIS PERBANDARAN KERIAN
147	T0147	39	5.052076	100.498247	MAJLIS PERBANDARAN KERIAN
148	T0148	37	5.052198	100.497928	MAJLIS PERBANDARAN KERIAN
149	T0149	24	5.052298	100.497617	MAJLIS PERBANDARAN KERIAN
150	T0150	48	5.052359	100.497416	MAJLIS PERBANDARAN KERIAN
151	T0151	29	5.051960	100.497341	MAJLIS PERBANDARAN KERIAN
152	T0152	37	5.051718	100.497279	MAJLIS PERBANDARAN KERIAN
153	T0153	25	5.051404	100.497212	MAJLIS PERBANDARAN KERIAN
154	T0154	36	5.051182	100.497166	MAJLIS PERBANDARAN KERIAN
155	T0155	37	5.050874	100.497094	MAJLIS PERBANDARAN KERIAN
156	T0156	32	5.050552	100.497009	MAJLIS PERBANDARAN KERIAN
157	T0157	36	5.050272	100.496950	MAJLIS PERBANDARAN KERIAN
158	T0158	43	5.049967	100.496871	MAJLIS PERBANDARAN KERIAN
159	T0159 (FDP 7)	32	5.049587	100.496799	MAJLIS PERBANDARAN KERIAN
160	T0160	21	5.049307	100.496740	MAJLIS PERBANDARAN KERIAN
161	T0161	37	5.049129	100.496688	MAJLIS PERBANDARAN KERIAN
162	T0162	36	5.048807	100.496634	MAJLIS PERBANDARAN KERIAN
163	T0163	34	5.048505	100.496556	MAJLIS PERBANDARAN KERIAN
164	T0164	38	5.048213	100.496490	MAJLIS PERBANDARAN KERIAN
165	T0165	38	5.047879	100.496408	MAJLIS PERBANDARAN KERIAN
166	T0166	41	5.047541	100.496349	MAJLIS PERBANDARAN KERIAN
167	T0167	34	5.047190	100.496259	MAJLIS PERBANDARAN KERIAN
168	T0168	46	5.046901	100.496188	MAJLIS PERBANDARAN KERIAN
169	T0169	36	5.046507	100.496093	MAJLIS PERBANDARAN KERIAN
170	T0170	30	5.046194	100.496026	MAJLIS PERBANDARAN KERIAN
171	T0171	56	5.045938	100.495943	MAJLIS PERBANDARAN KERIAN
172	T0172 (FDP 8)	44	5.045455	100.495844	MAJLIS PERBANDARAN KERIAN
173	T0173 (JOINT 4)	18	5.052856	100.497568	MAJLIS PERBANDARAN KERIAN
174	T0174	51	5.052844	100.497726	MAJLIS PERBANDARAN KERIAN
175	T0175	47	5.053276	100.497805	MAJLIS PERBANDARAN KERIAN
176	T0176	30	5.053684	100.497888	MAJLIS PERBANDARAN KERIAN
177	T0177	40	5.053938	100.497940	MAJLIS PERBANDARAN KERIAN
178	T0178 (FDP 9)	21	5.054276	100.498036	MAJLIS PERBANDARAN KERIAN
179	T0179	35	5.054452	100.498078	MAJLIS PERBANDARAN KERIAN



PROJEK PENYEDIAAN DAN PENYELENGGARAAN POINT OF PRESENT (POP) FASA 2: HAB INFRASTRUKTUR GENTIAN OPTIK BERHAMPIRAN DENGAN SEKOLAH, KAWASAN PERINDUSTRIAN, PREMIS KERAJAAN DAN KOMUNITI SEKITARNYA OLEH KEMENTERIAN KOMUNIKASI MALAYSIA - ZON UTARA (KKMM.400-11/17/132(1))

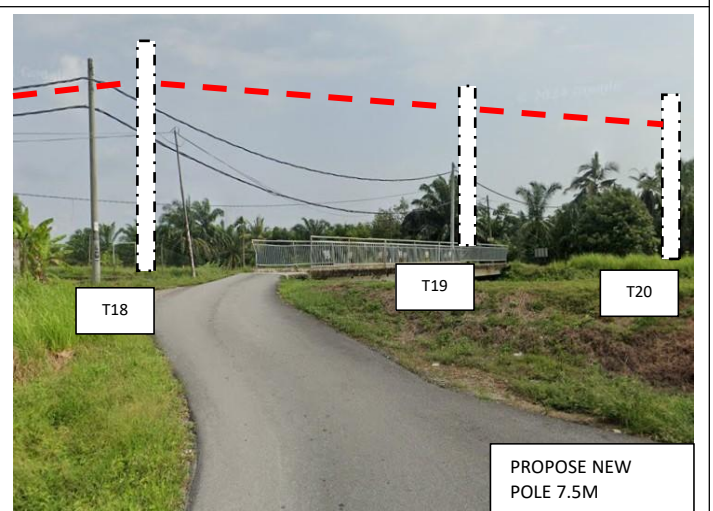
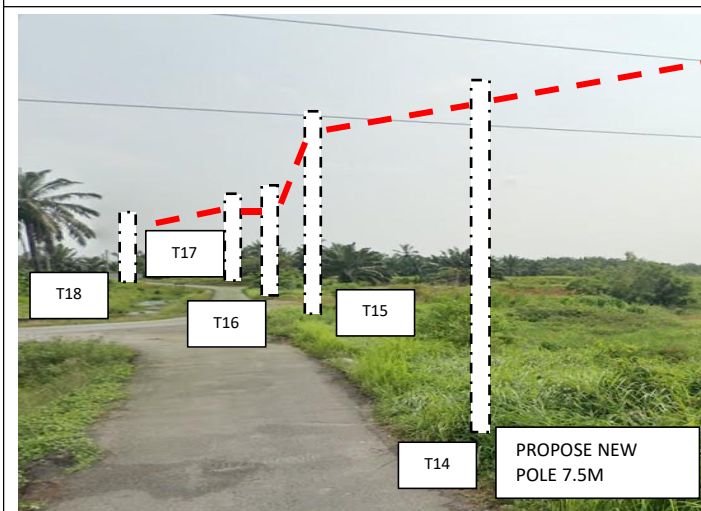
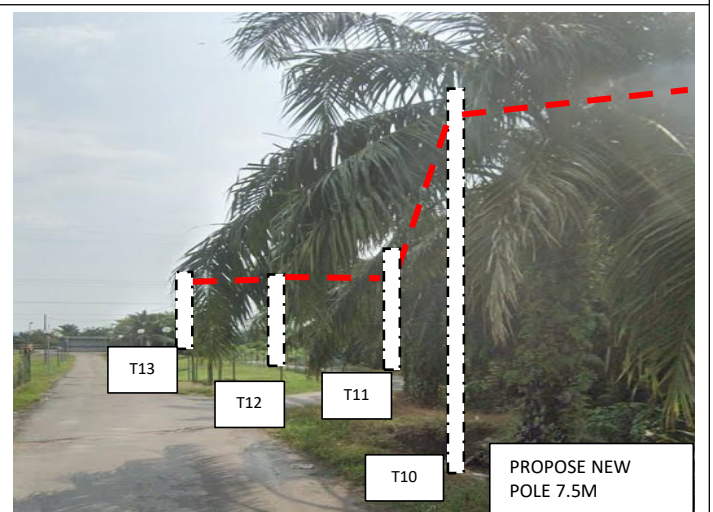
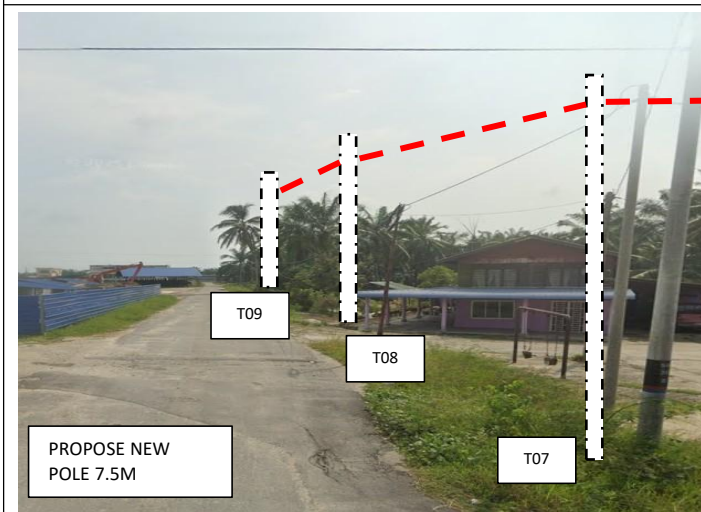
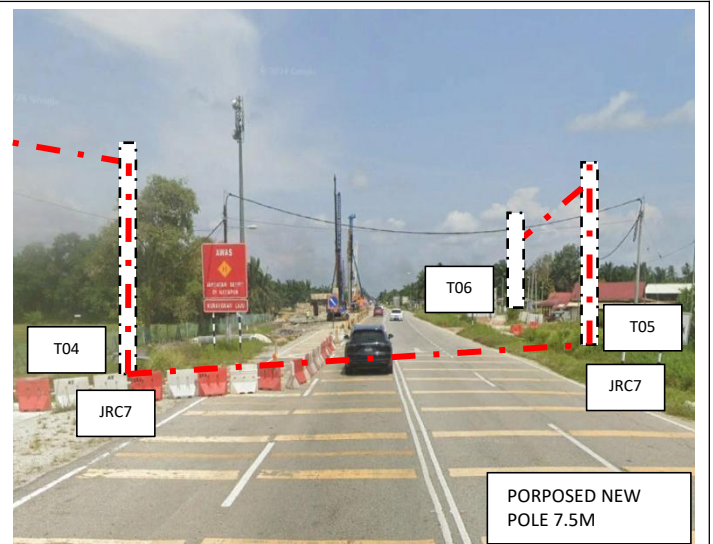
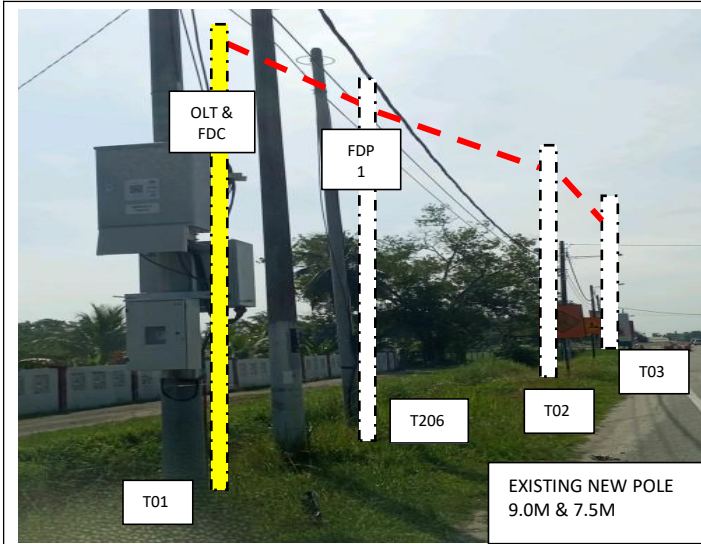


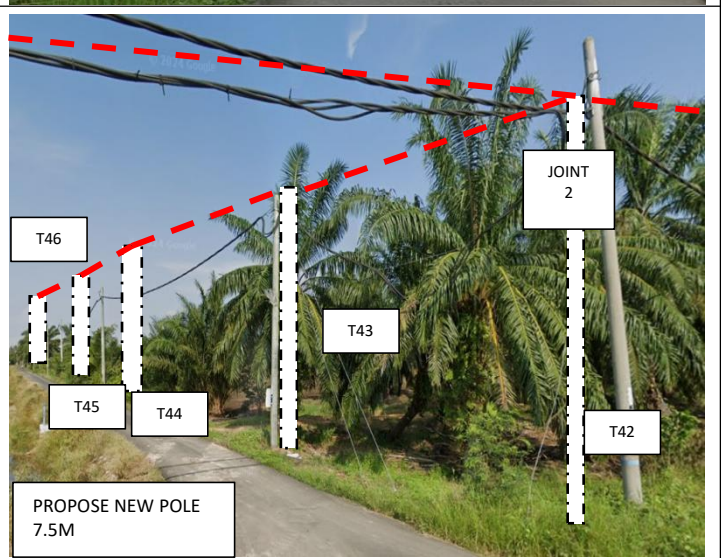
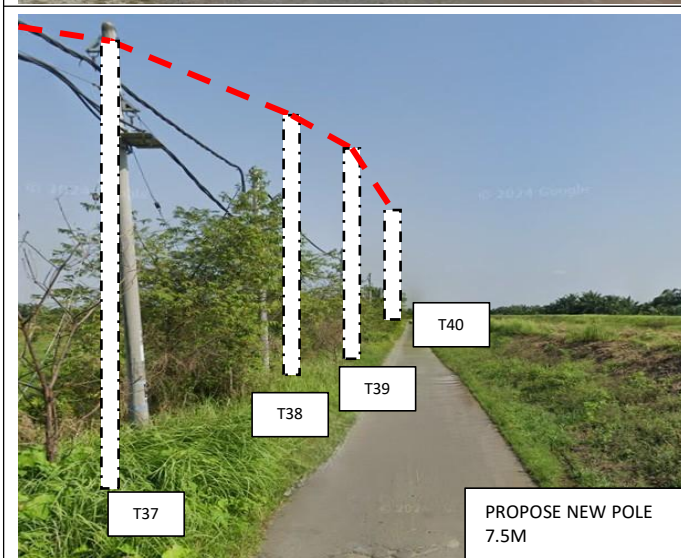
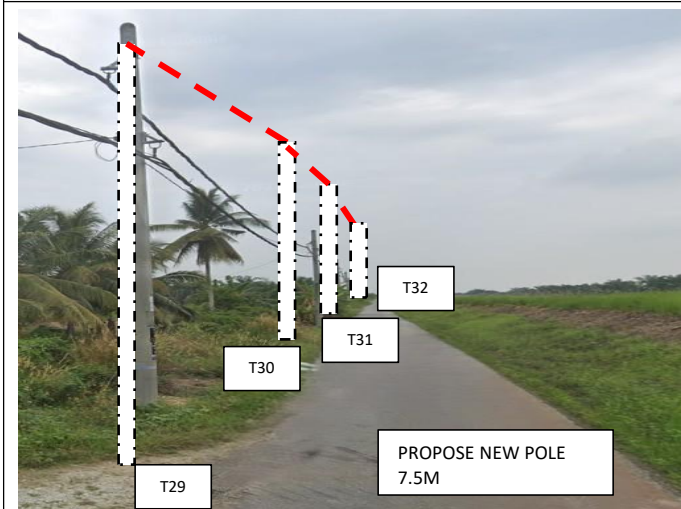
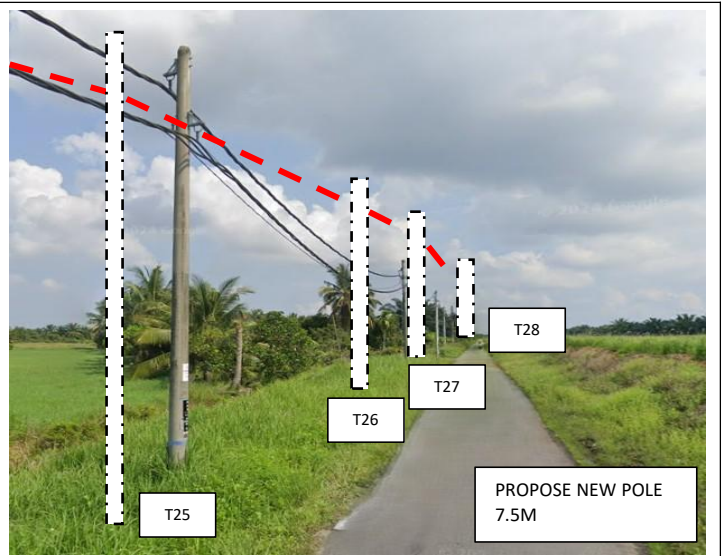
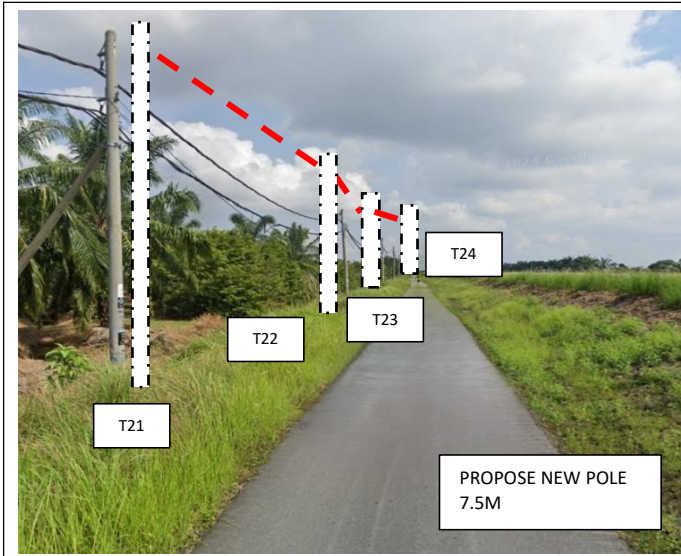
**Proposed New Pole Coordinate**

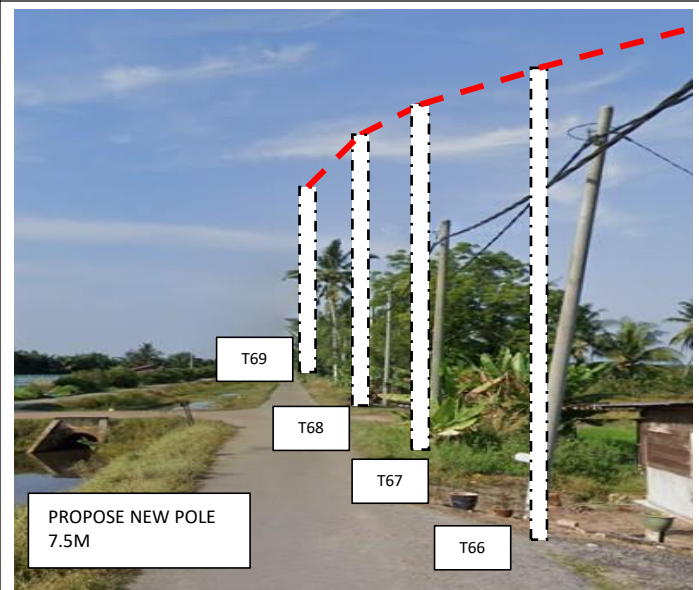
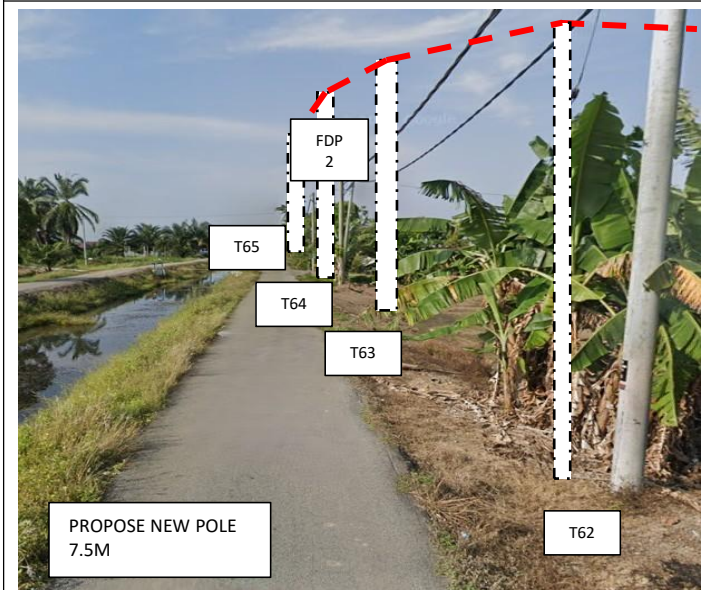
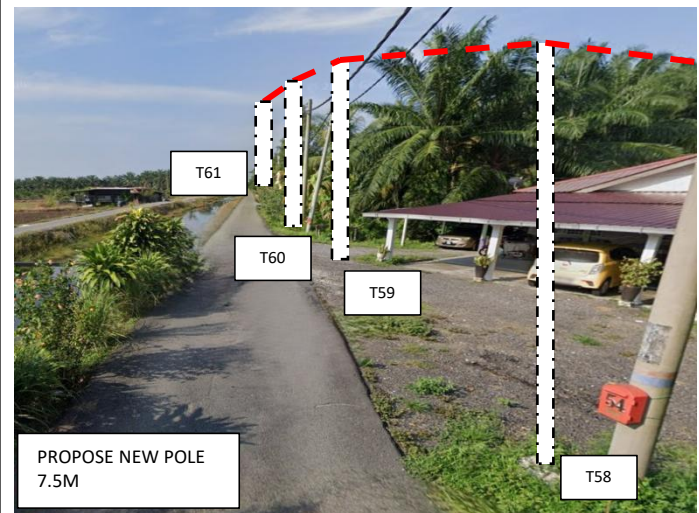
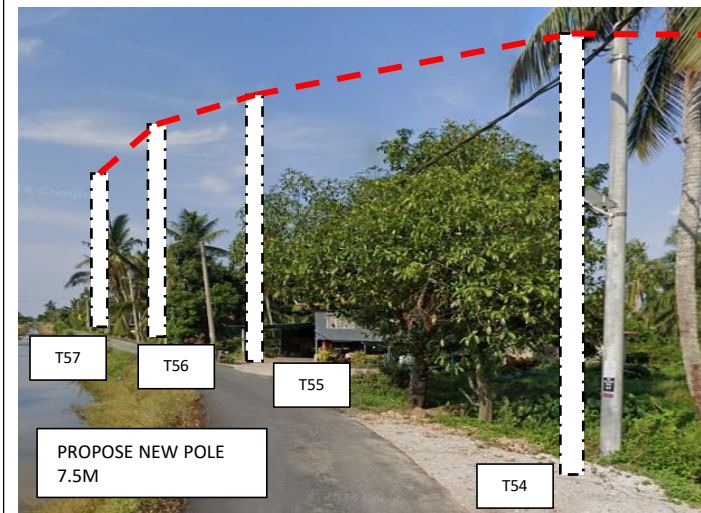
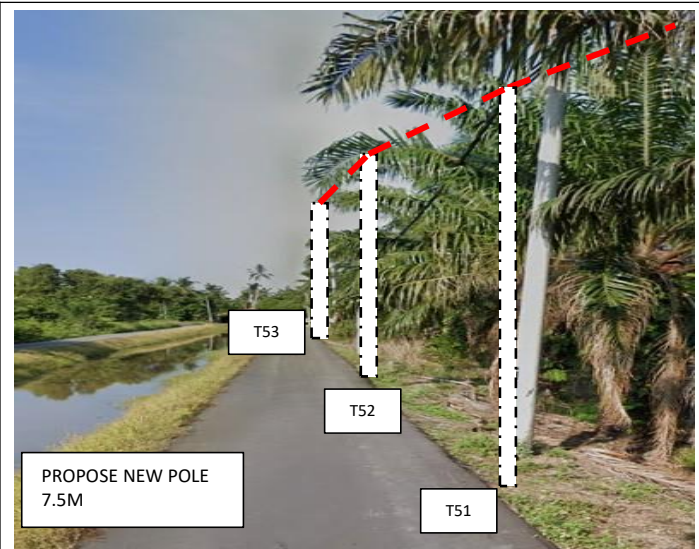
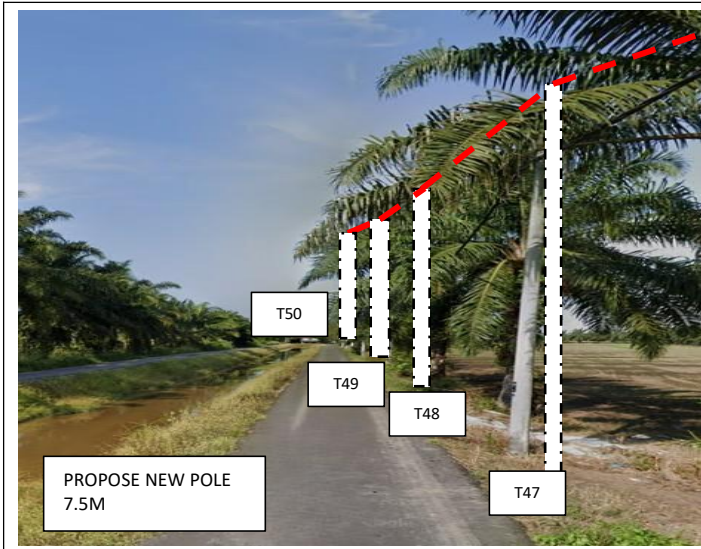
No.	Pole Number	Distance (m)	Latitude	Longitude	Local Authority
180	T0180	36	5.054749	100.498135	MAJLIS PERBANDARAN KERIAN
181	T0181	42	5.055055	100.498195	MAJLIS PERBANDARAN KERIAN
182	T0182	32	5.055399	100.498281	MAJLIS PERBANDARAN KERIAN
183	T0183	38	5.055669	100.498335	MAJLIS PERBANDARAN KERIAN
184	T0184	51	5.055975	100.498423	MAJLIS PERBANDARAN KERIAN
185	T0185	38	5.056411	100.498525	MAJLIS PERBANDARAN KERIAN
186	T0186 (FDP 10)	43	5.056745	100.498581	MAJLIS PERBANDARAN KERIAN
187	T0187	36	5.045071	100.495772	MAJLIS PERBANDARAN KERIAN
188	T0188	31	5.044758	100.495702	MAJLIS PERBANDARAN KERIAN
189	T0189	29	5.044493	100.495632	MAJLIS PERBANDARAN KERIAN
190	T0190	39	5.044246	100.495586	MAJLIS PERBANDARAN KERIAN
191	T0191	32	5.043905	100.495518	MAJLIS PERBANDARAN KERIAN
192	T0192	32	5.043632	100.495451	MAJLIS PERBANDARAN KERIAN
193	T0193	48	5.043362	100.495392	MAJLIS PERBANDARAN KERIAN
194	T0194	35	5.042950	100.495306	MAJLIS PERBANDARAN KERIAN
195	T0195 (FDP 11)	40	5.042648	100.495226	MAJLIS PERBANDARAN KERIAN
196	T0196	32	5.029544	100.504889	MAJLIS PERBANDARAN KERIAN
197	T0197	38	5.029260	100.504842	MAJLIS PERBANDARAN KERIAN
198	T0198	32	5.028922	100.504783	MAJLIS PERBANDARAN KERIAN
199	T0199 (FDP 12)	25	5.028639	100.504729	MAJLIS PERBANDARAN KERIAN
200	T0200 (JOINT 1)	31	5.041854	100.515162	MAJLIS PERBANDARAN KERIAN
201	T0201	38	5.041605	100.515335	MAJLIS PERBANDARAN KERIAN
202	T0202	42	5.041325	100.515529	MAJLIS PERBANDARAN KERIAN
203	T0203	32	5.041020	100.515752	MAJLIS PERBANDARAN KERIAN
204	T0204	29	5.040789	100.515919	MAJLIS PERBANDARAN KERIAN
205	T0205 (FDP 13)	3	5.040576	100.516056	MAJLIS PERBANDARAN KERIAN
206	T0206 (FDP 1)	20	5.045190	100.517333	MAJLIS PERBANDARAN KERIAN

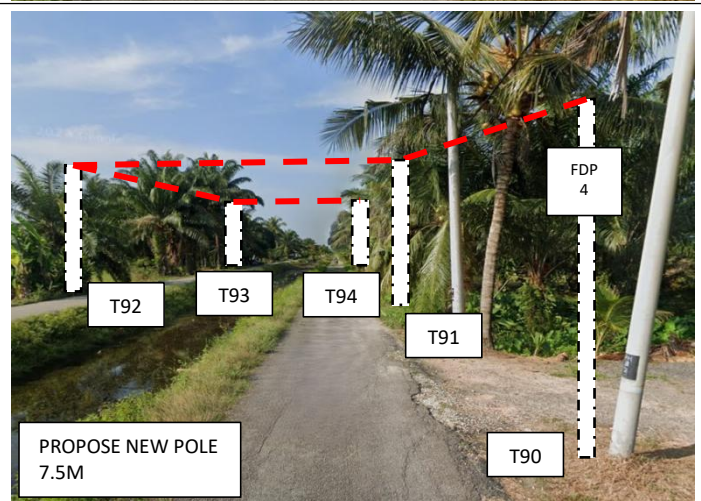
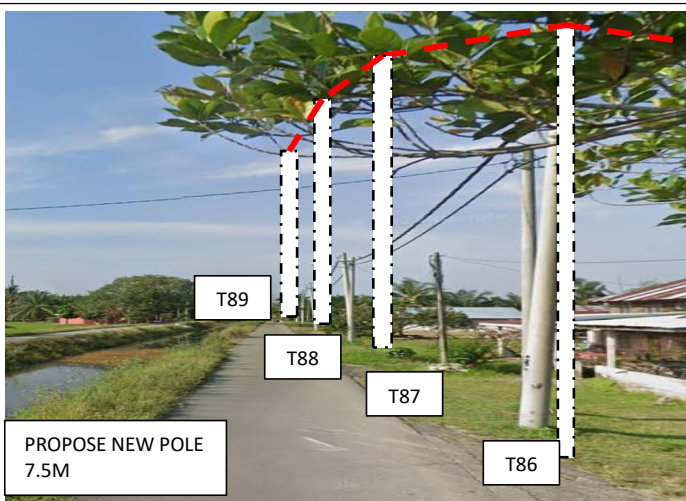
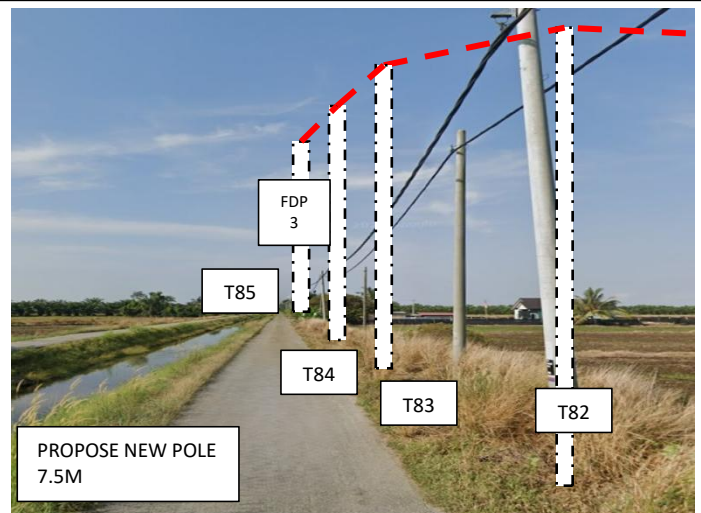
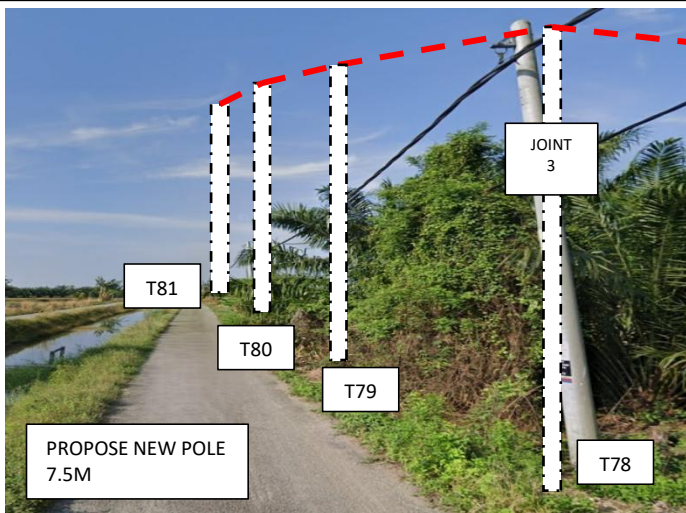
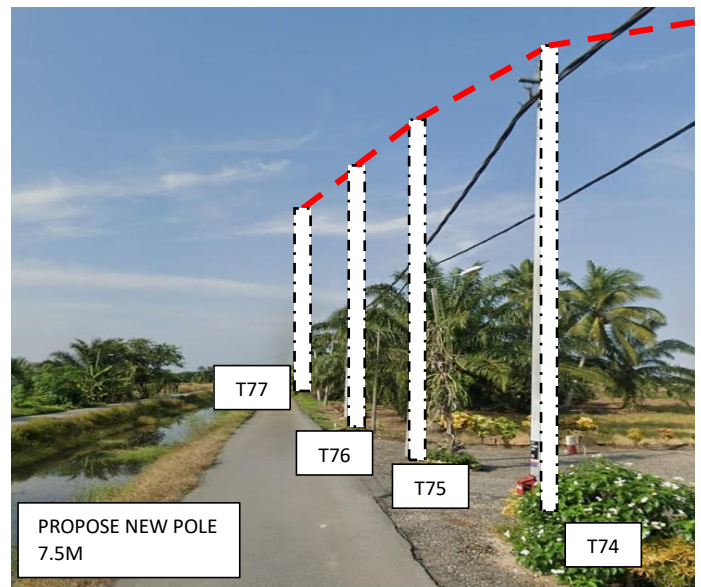
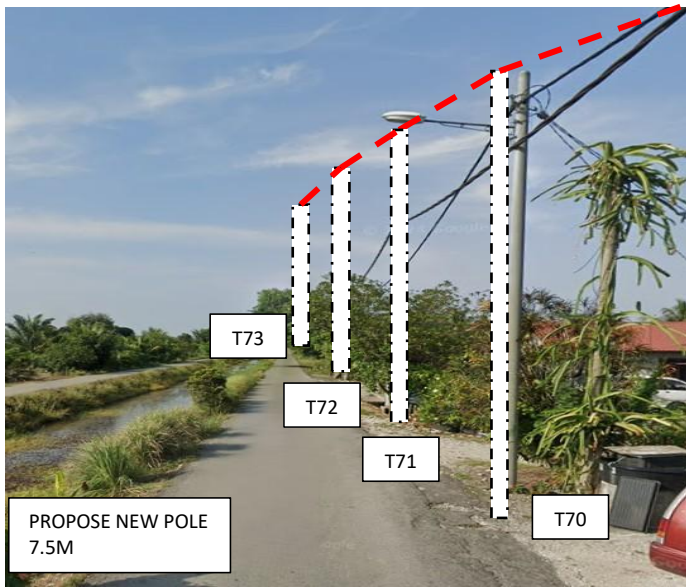
Bil	Type	7.5m	9.0m	Total
1.	No Of Pole	197	9	206

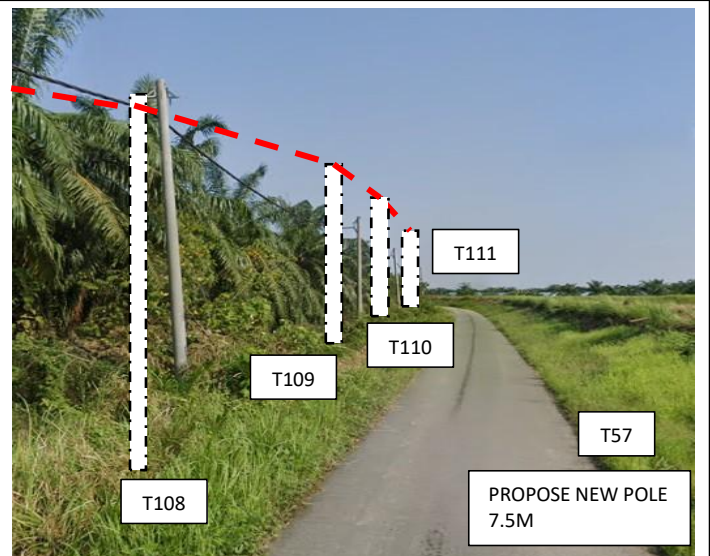
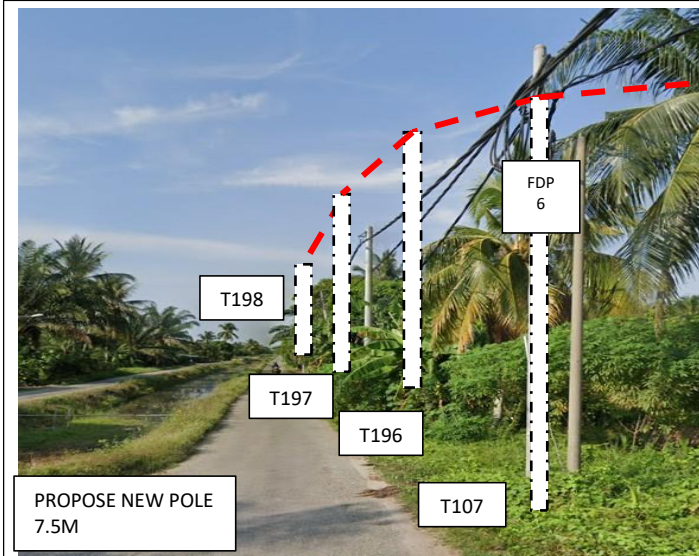
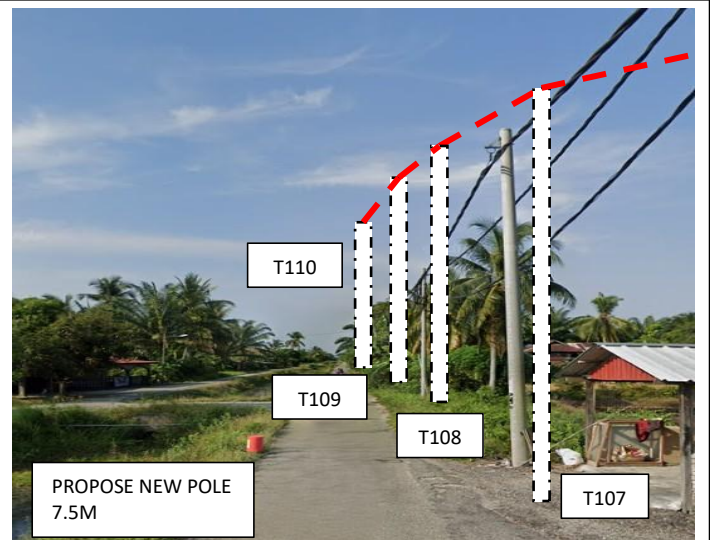
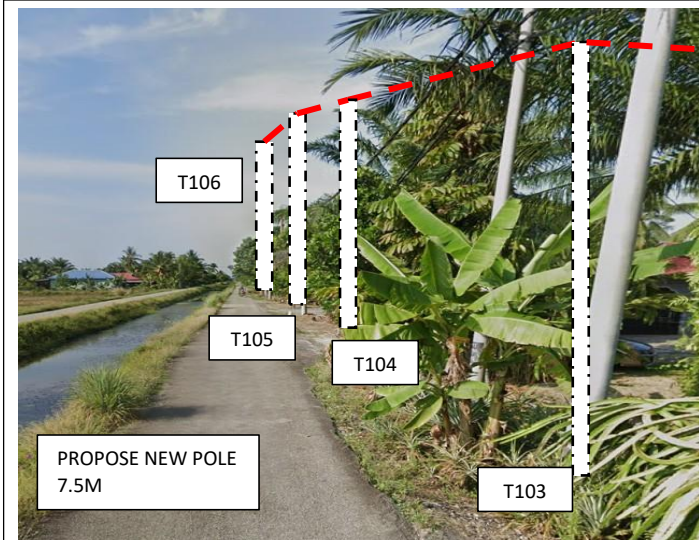
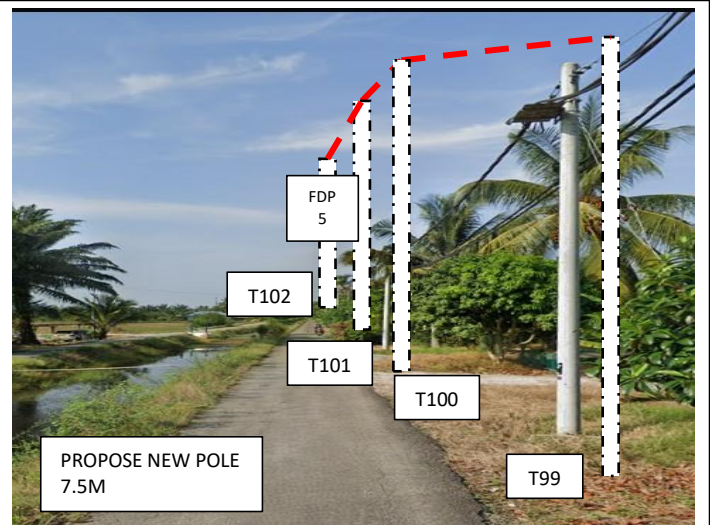
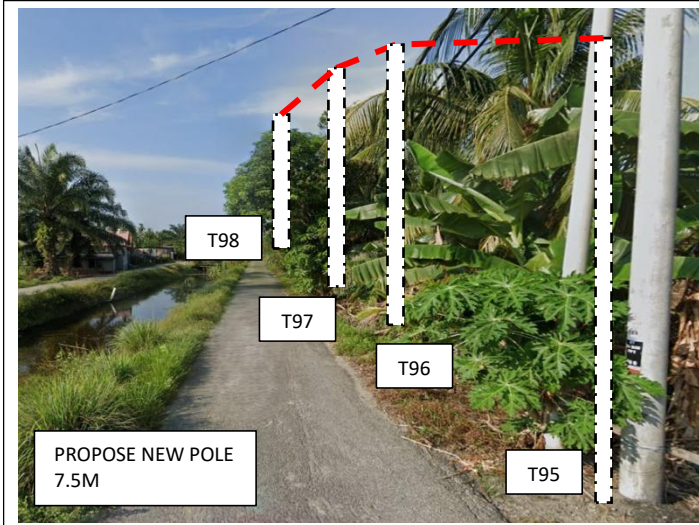
**6.0 SITE PHOTOS - PROPOSED NEW POLE**

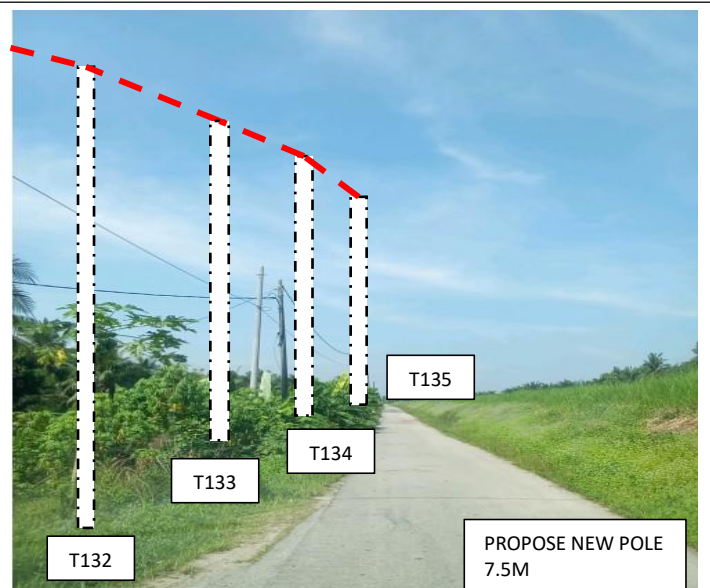
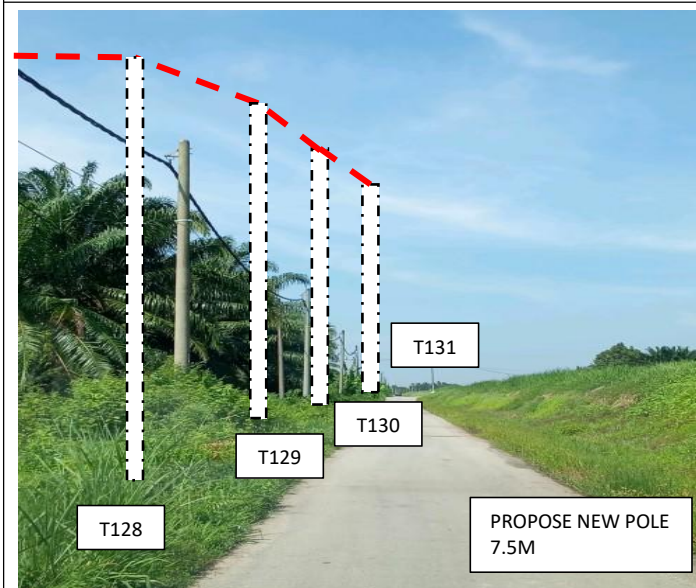
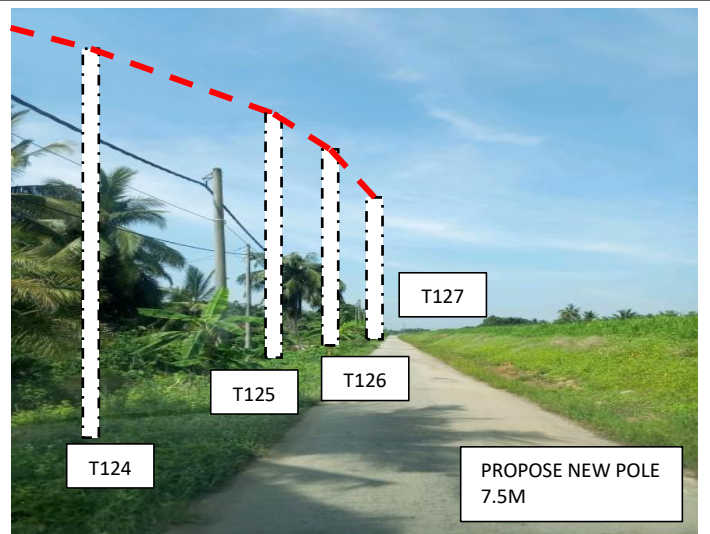
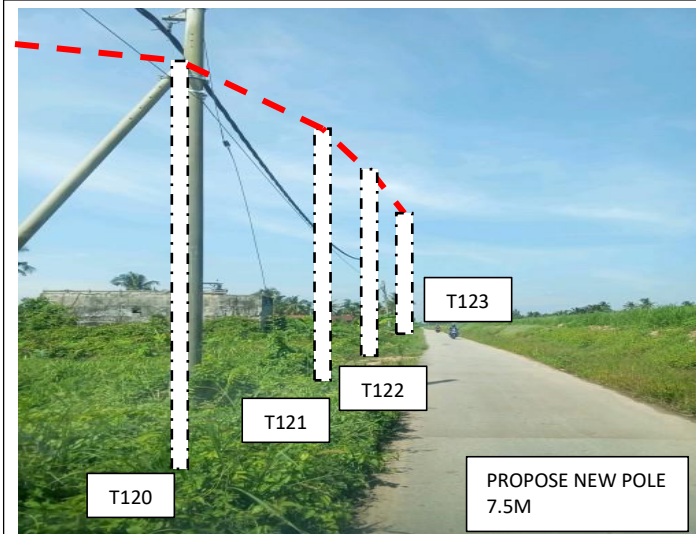
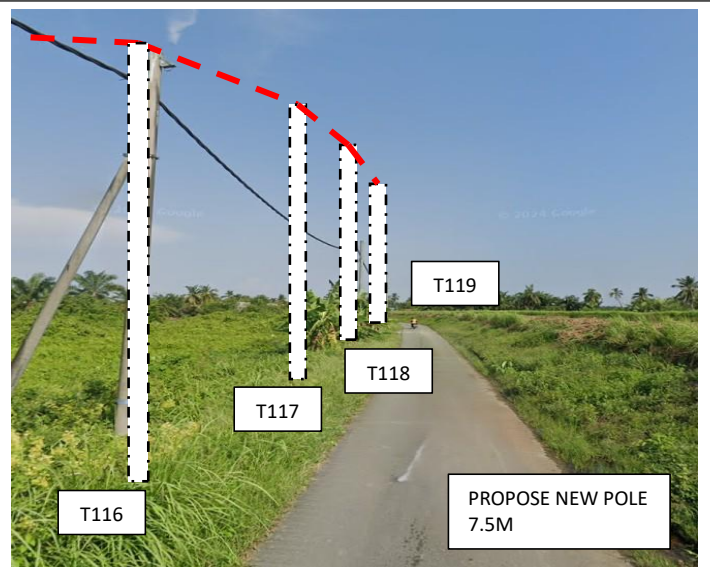
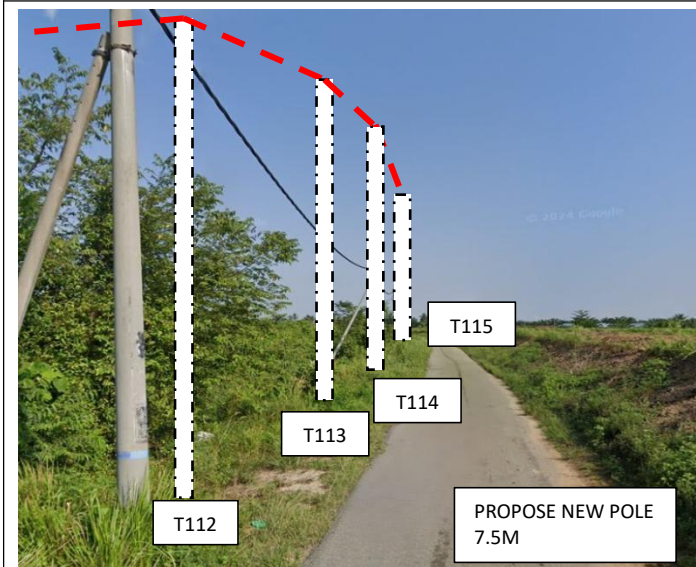


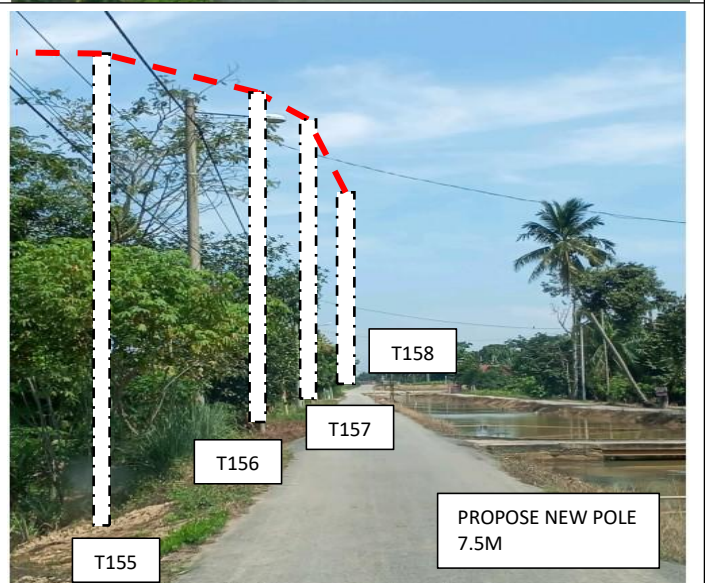
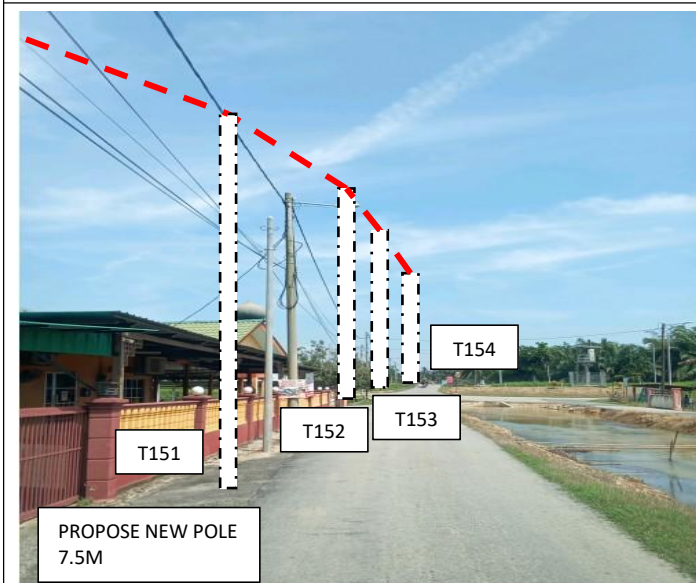
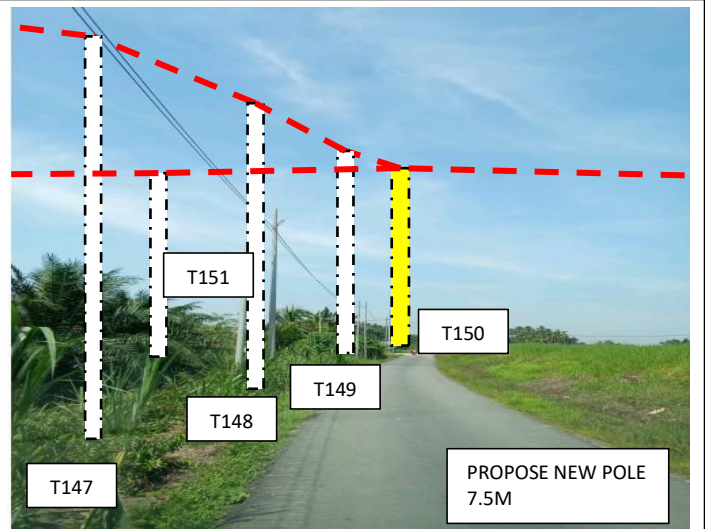
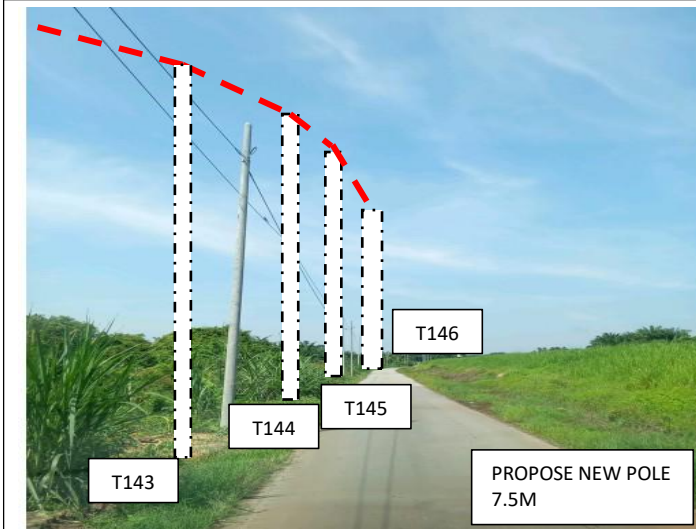
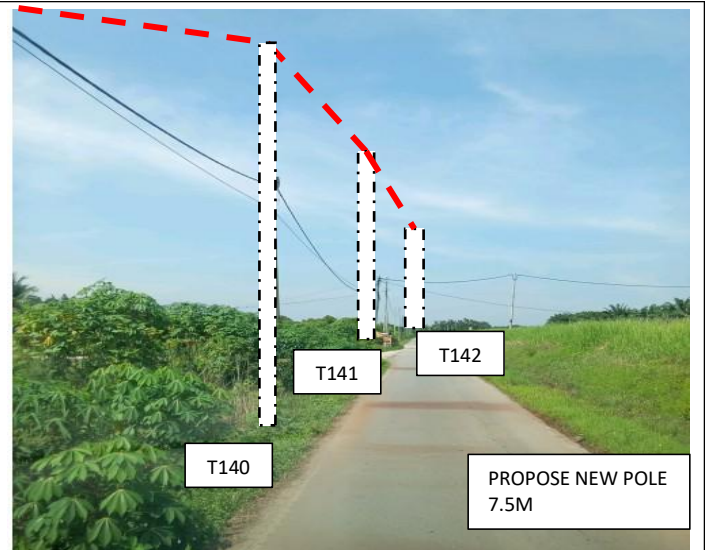
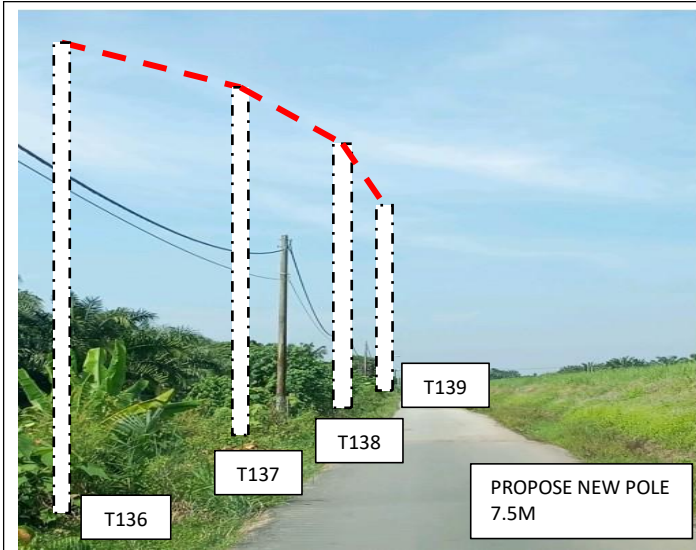


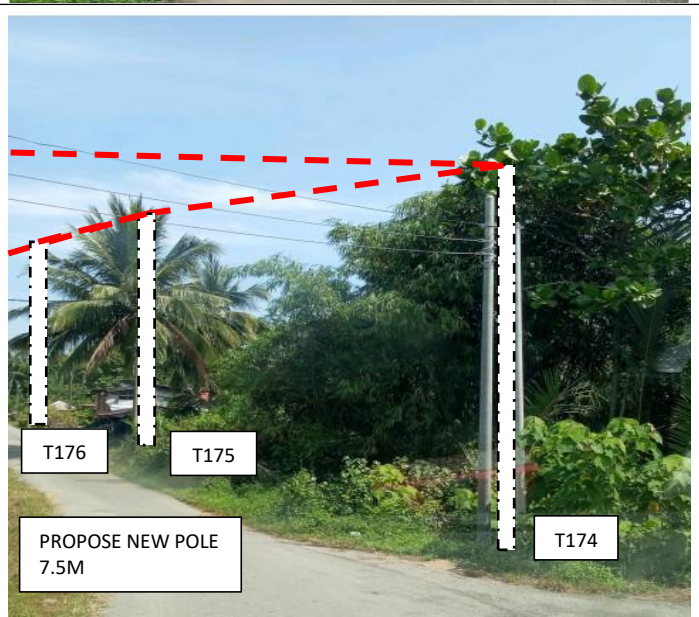
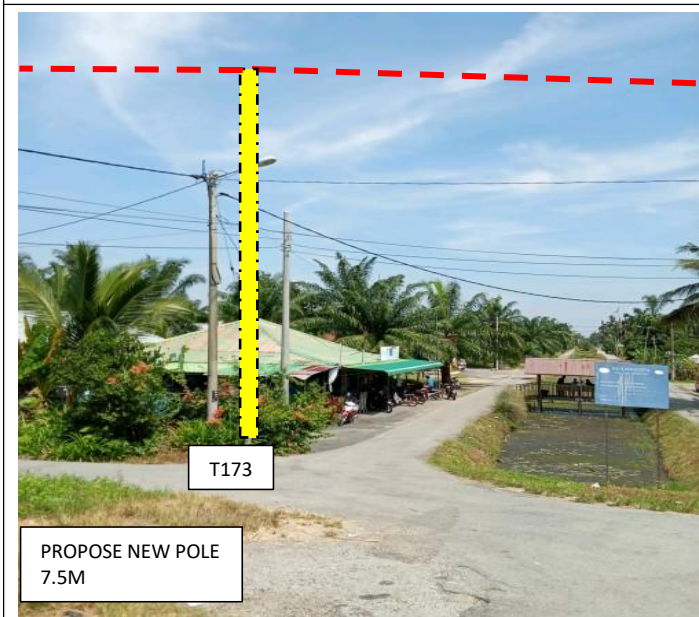
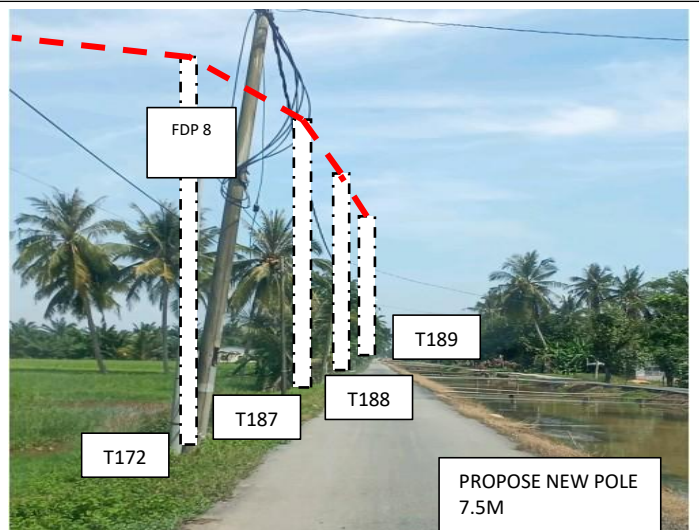
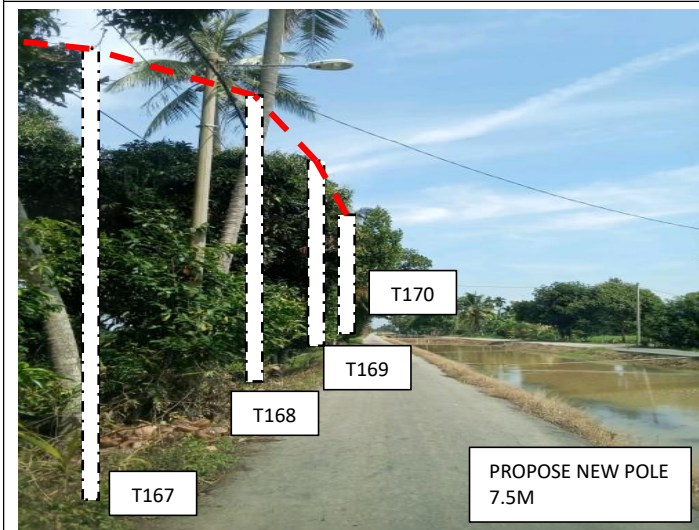
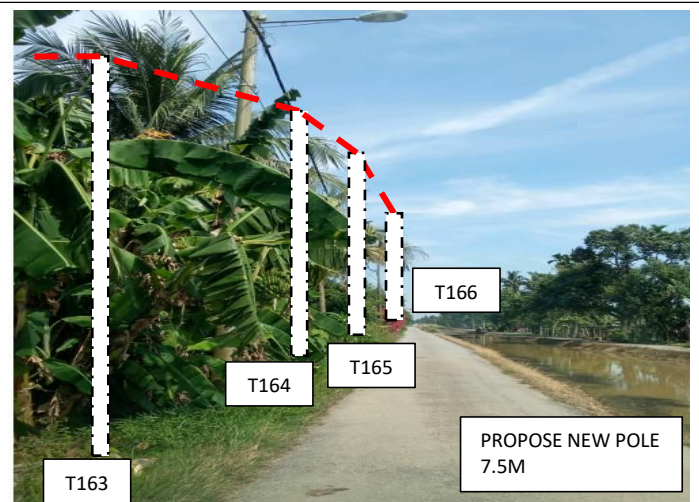
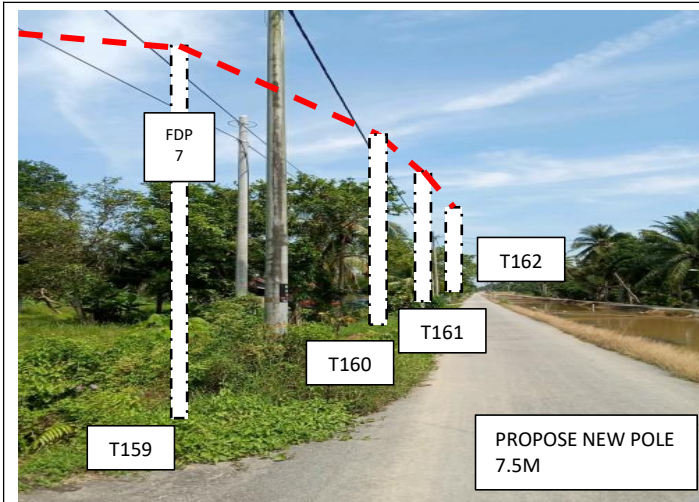


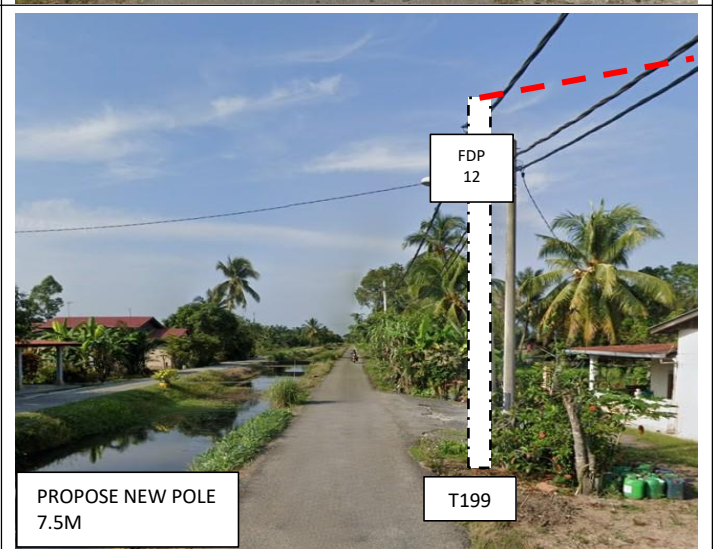
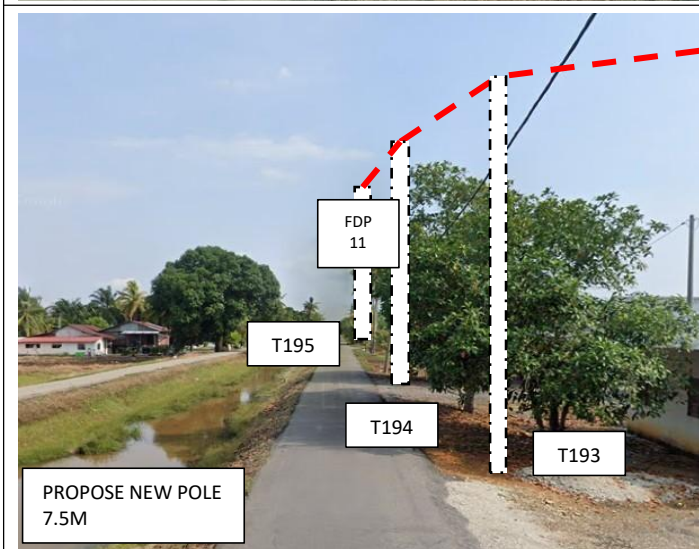
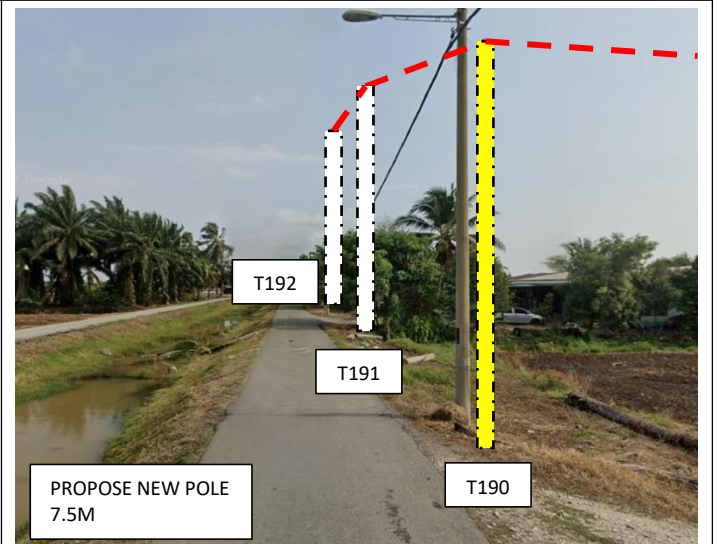
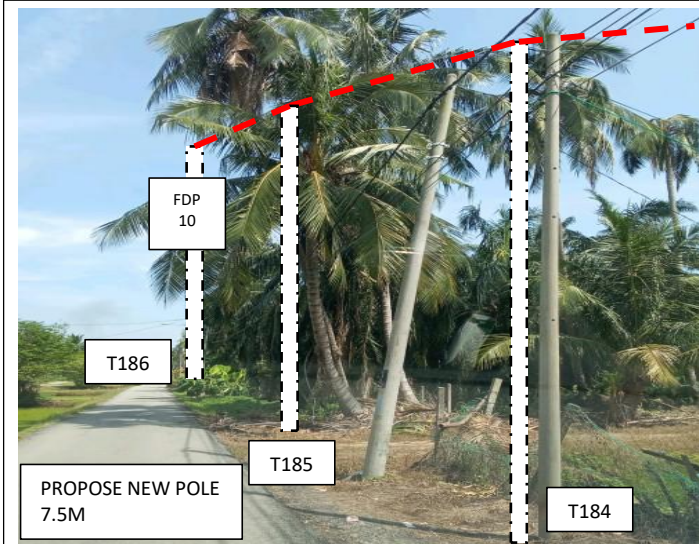
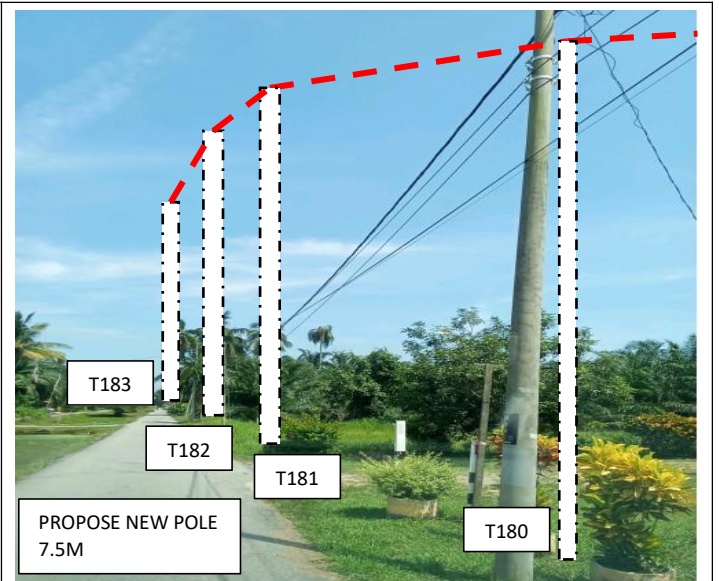
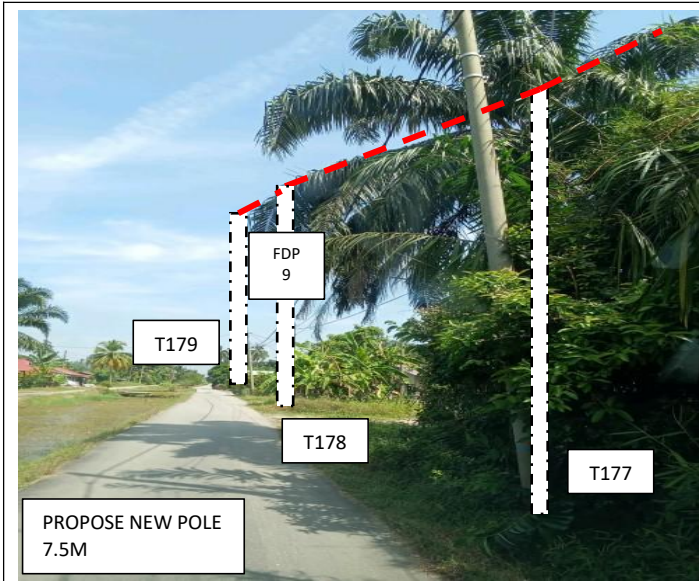


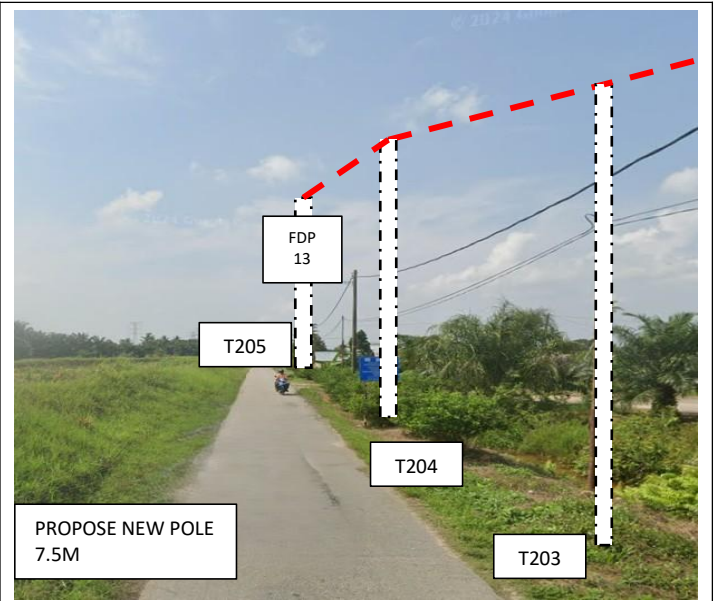
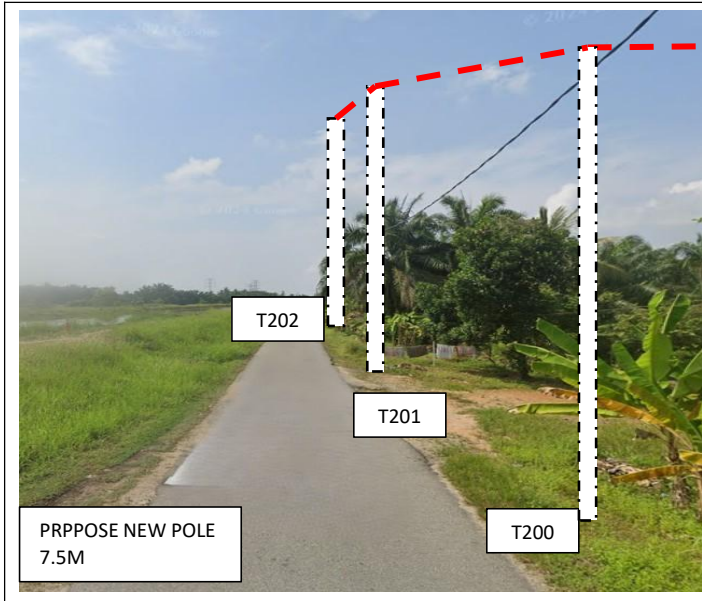














PROJEK PENYEDIAAN DAN PENYELENGGARAAN POINT OF PRESENT (POP) FASA 2: HAB INFRASTRUKTUR GENTIAN OPTIK BERHAMPIRAN DENGAN SEKOLAH, KAWASAN PERINDUSTRIAN, PREMIS KERAJAAN DAN KOMUNITI SEKITARNYA OLEH KEMENTERIAN KOMUNIKASI MALAYSIA - ZON UTARA (KKMM.400-11/17/132(1))



## 7.0 3<sup>rd</sup> PARTIES DEPENDENCIES

NO	LOCAL COUNCIL / AUTHORITY	REMARK
1	Majlis Perbandaran Kerian	7800 M
2	JKR Kerian	200 M

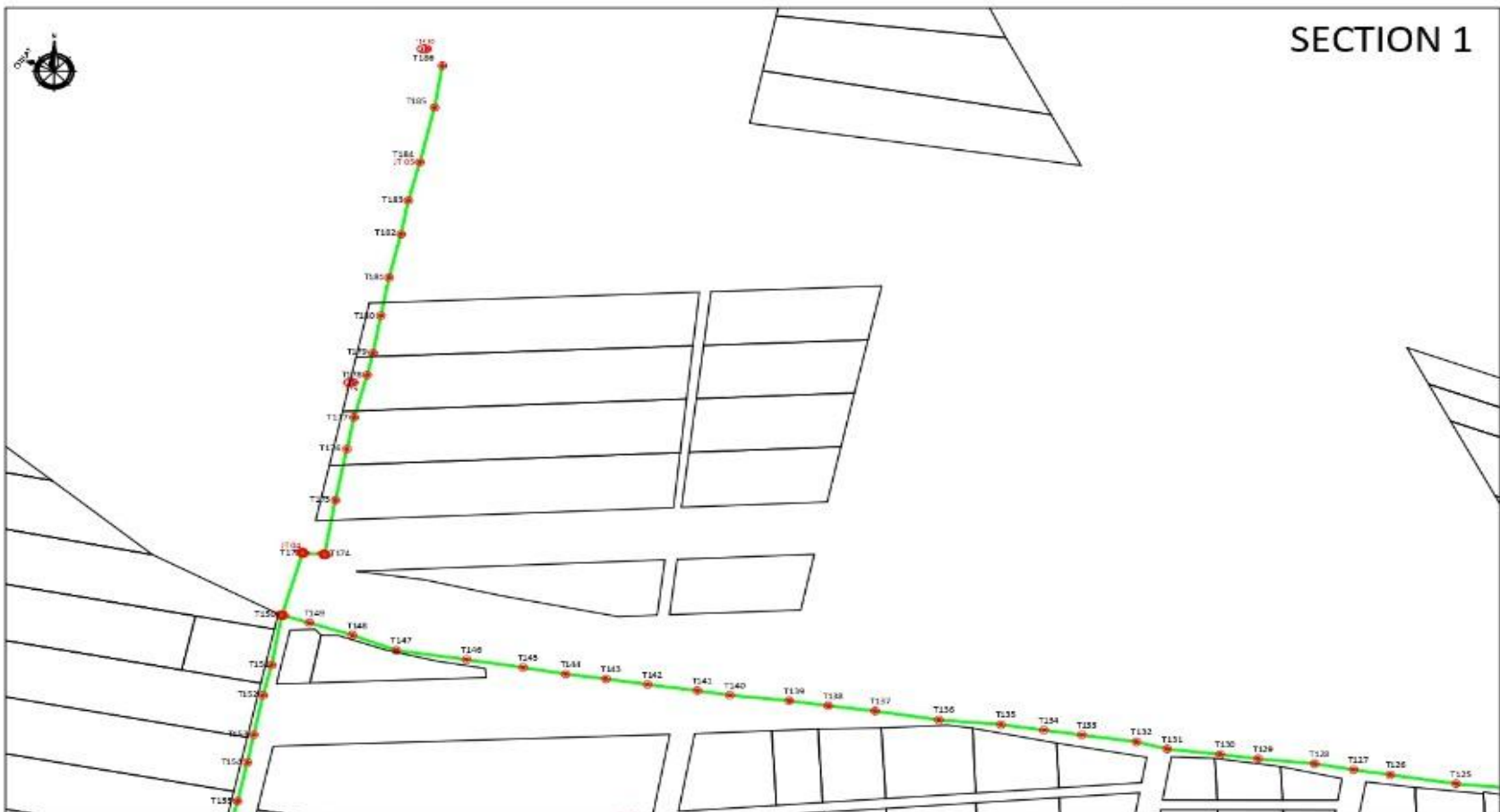


PROJEK PENYEDIAAN DAN PENYELENGGARAAN POINT OF PRESENT (POP) FASA 2: HAB INFRASTRUKTUR GENTIAN OPTIK BERHAMPIRAN DENGAN SEKOLAH, KAWASAN PERINDUSTRIAN, PREMIS KERAJAAN DAN KOMUNITI SEKITARNYA OLEH KEMENTERIAN KOMUNIKASI MALAYSIA - ZON UTARA (KKMM.400-11/17/132(1))



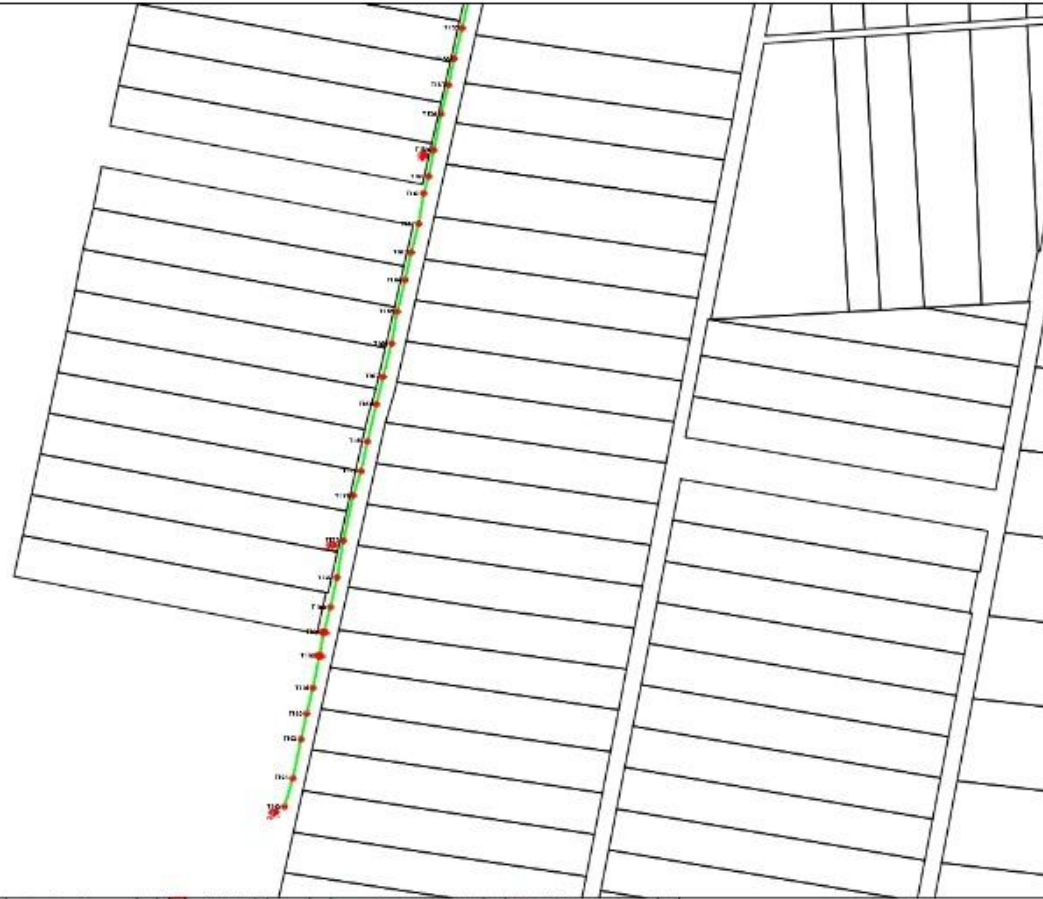


# SECTION 1



<table border="0"> <tr> <td>12C FOC</td> <td>Installed 1.8 / 1.8 / 1.82 splitter</td> <td>Installed Pole (M)</td> <td>Suspension</td> <td>New Manhole (M)</td> <td>Misc. Tranching (Meter)</td> <td>M1</td> <td>M1 W/L</td> </tr> <tr> <td>24C FOC</td> <td>Installed PANDA Split</td> <td>Installed Pole (1.5M)</td> <td>Tanaka</td> <td>New Manhole (R/C)</td> <td>Temporary Infra Meter</td> <td>18x1</td> <td>Existing 18x1 Pole M1</td> </tr> <tr> <td>48C FOC</td> <td>FOC</td> <td>Installed Pole (3.0M)</td> <td>Pole Ring</td> <td>TEP Boundary</td> <td>Loop / Coll (Meter)</td> <td>PO</td> <td>New Pole NO.</td> </tr> <tr> <td>96C FOC</td> <td>Clam</td> <td>Existing Pole</td> <td>FOC sds (1.8) splitter</td> <td>FOC (Meter)</td> <td>Active Subscriber Cabinet</td> <td>CO</td> <td>Clam NO.</td> </tr> <tr> <td>144C FOC</td> <td>Existing Clam</td> <td>Installed Meter</td> <td>Existing Manhole</td> <td>Open O/L (Meter)</td> <td>FOC NO.</td> <td>OP</td> <td>REP NO.</td> </tr> </table>	12C FOC	Installed 1.8 / 1.8 / 1.82 splitter	Installed Pole (M)	Suspension	New Manhole (M)	Misc. Tranching (Meter)	M1	M1 W/L	24C FOC	Installed PANDA Split	Installed Pole (1.5M)	Tanaka	New Manhole (R/C)	Temporary Infra Meter	18x1	Existing 18x1 Pole M1	48C FOC	FOC	Installed Pole (3.0M)	Pole Ring	TEP Boundary	Loop / Coll (Meter)	PO	New Pole NO.	96C FOC	Clam	Existing Pole	FOC sds (1.8) splitter	FOC (Meter)	Active Subscriber Cabinet	CO	Clam NO.	144C FOC	Existing Clam	Installed Meter	Existing Manhole	Open O/L (Meter)	FOC NO.	OP	REP NO.	<p>PROJECT OWNER:</p>  <p>KEMENTERIAN KOMUNIKASI DAN DIGITAL</p>	<p>MAIN CONTRACTOR:</p>  <p><b>APEX</b> COMMUNICATIONS SDN BHD</p> <p><b>PRIVASAT</b></p>	<p>SUB-CONTRACTOR:</p>  <p><b>TSH PUALI ENGINEERING SDN BHD</b> No. 10, Jalan Utama 5 Pusat Perniagaan Mering, 00200 Teluk Anson, Teluk Anson, Kedah</p>	<p>PROJECT TITLE:</p> <p>PROJEK PENYEDIAAN DAN PENFELANGGAAHAN POINT OF PRESENCE (POP) FASA 2I HAB INFRASTRUKTUR GENTIAN OPTIK BERSAMPURAN DENGAN SEKELUAS KAWASAN PERINDUSTRIAN, PREHE KERAJAMAN DAN KOMPLEKS SEKITARNYA OLEH KEMENTERIAN KOMUNIKASI MALAYSIA - ZON UTARA 0000N-400-11/17/132K13</p>	<p>DRAWING TITLE:</p> <p>LAYOUT PLAN - SK SUNGAI BUKAK</p>	<p>Design By : N/H</p> <p>Drawn By : N/H</p> <p>Checked By : N/H</p> <p>PROJECT NUMBER :</p> <p>TSH/AFD/LA/007/805A/000</p> <p>DATE PREP AND ITS COPYRIGHT ARE THE PROPERTY OF TSH PUALI ENGINEERING SDN BHD</p>	<p>Date : 07 MAY 2025</p> <p>Scale : 80%</p> <p>Job Number :</p> <p>Sheet : 02 / 27</p> <p>Scale :</p>
12C FOC	Installed 1.8 / 1.8 / 1.82 splitter	Installed Pole (M)	Suspension	New Manhole (M)	Misc. Tranching (Meter)	M1	M1 W/L																																								
24C FOC	Installed PANDA Split	Installed Pole (1.5M)	Tanaka	New Manhole (R/C)	Temporary Infra Meter	18x1	Existing 18x1 Pole M1																																								
48C FOC	FOC	Installed Pole (3.0M)	Pole Ring	TEP Boundary	Loop / Coll (Meter)	PO	New Pole NO.																																								
96C FOC	Clam	Existing Pole	FOC sds (1.8) splitter	FOC (Meter)	Active Subscriber Cabinet	CO	Clam NO.																																								
144C FOC	Existing Clam	Installed Meter	Existing Manhole	Open O/L (Meter)	FOC NO.	OP	REP NO.																																								

ACTUAL HOMEPASS :104



## SECTION 2

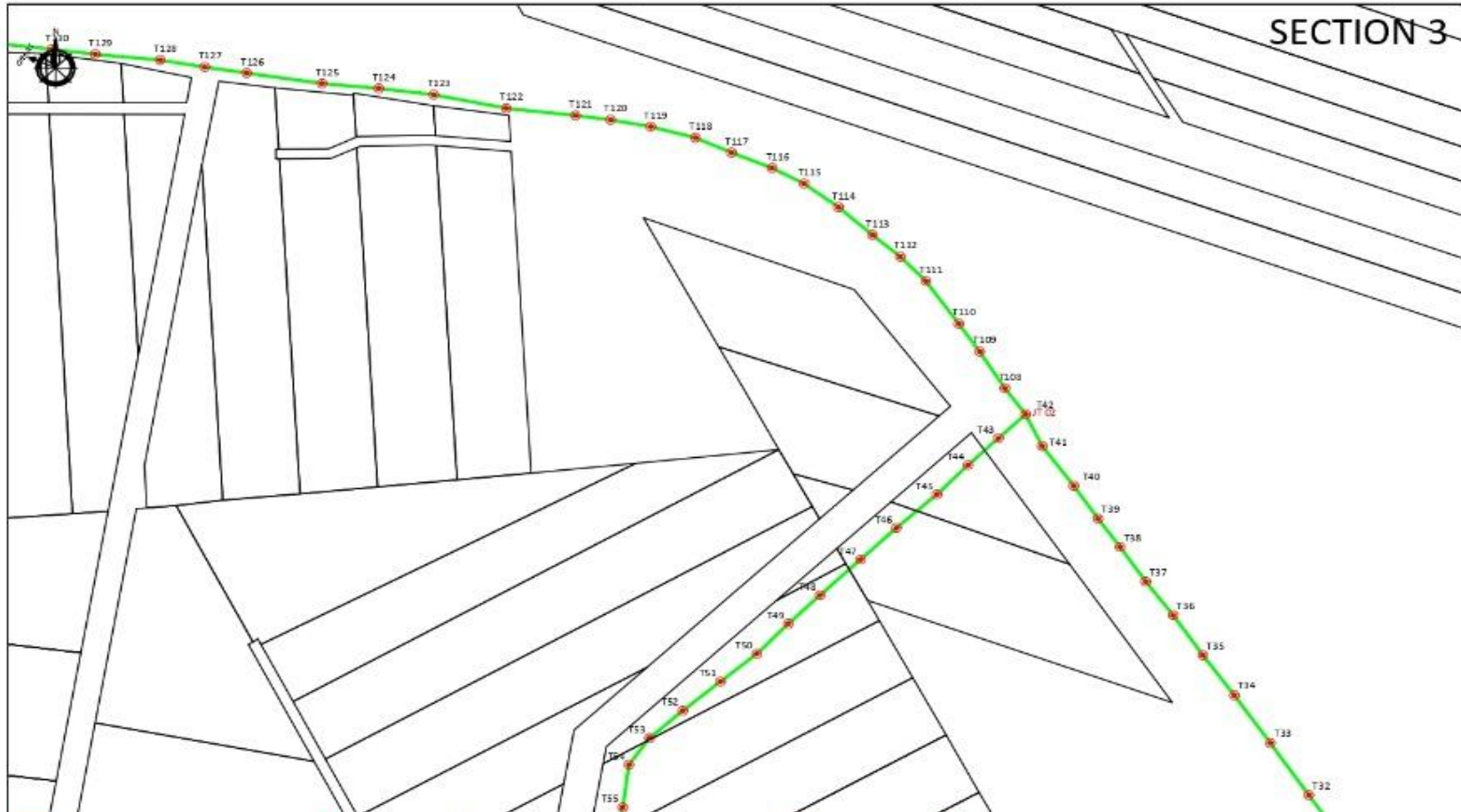
	122 FOC		Installed 1:2 / 1:8 / 1:32 splitter		Installed Pole (m)		Separation		New Manhole (m)		Wire-Tracing (meter)		SM NO.
	127 FOC		Installed Patch Cord		Installed Pole (1.5M)		Isolate		New Manhole (1.5M)		Temping into Meter		Cabling 90 Pole NO.
	128 FOC		FOC		Installed Pole (1.5M)		Fork (FOC)		FOC Boundary		Loop / 200 Meter		New Pole NO.
	129 FOC		Closure		1.5M Pole		FOC with 1:8 splitter		HO Meter		Active Outdoor Cabinet		Closure NO.
	130 FOC		Cabling Closure		Installed fiber		Cabling Manhole		Open Cut (meter)		FOC NO.		FOC NO.

KEY PLAN	PROJECT OWNER  KEMENTERIAN KOMUNIKASI DAN DIGITAL	MAIN CONTRACTOR  PRIVASAT	SUB-CONTRACTOR  TET PANG DATUK SDN BHD No. 100, Jalan 1/1, Taman 1/1, Seksyen 13, Petaling Jaya, Selangor Darul Ehsan, 46100 Kuala Lumpur, Malaysia	PROJECT TITLE PRELEK PENYEDIAAN DAN PENYELENGGARAAN POINT OF PRESENCE OPTIK FASA 2- HUB INFRASTRUKTUR GENTIAN OPTIK BERSAMPURAN DENGAN SEKOLAH, KAWASAN PERINDUSTRIAN, PREMIS KESAJAJAN DAN KOMUNITI SEKITARNYA BLEK KEMENTERIAN KOMUNIKASI MALAYSIA - ZON UTARA (KKM400-11/17/08212)	DRAWING TITLE LAYER PLAN - SK SUNG BONG	Design By : MTH Date : 07 MAY 2025
						Checked By : MTH Scale : NTS
						Job Number :
						DRAWING NUMBER : TET/LAYER/LAYOUT/BOOK/003
						Sheet : 02 / 07
						THIS DRAWING AND ITS CONTENT ARE THE PROPERTY OF TET PANG DATUK SDN BHD

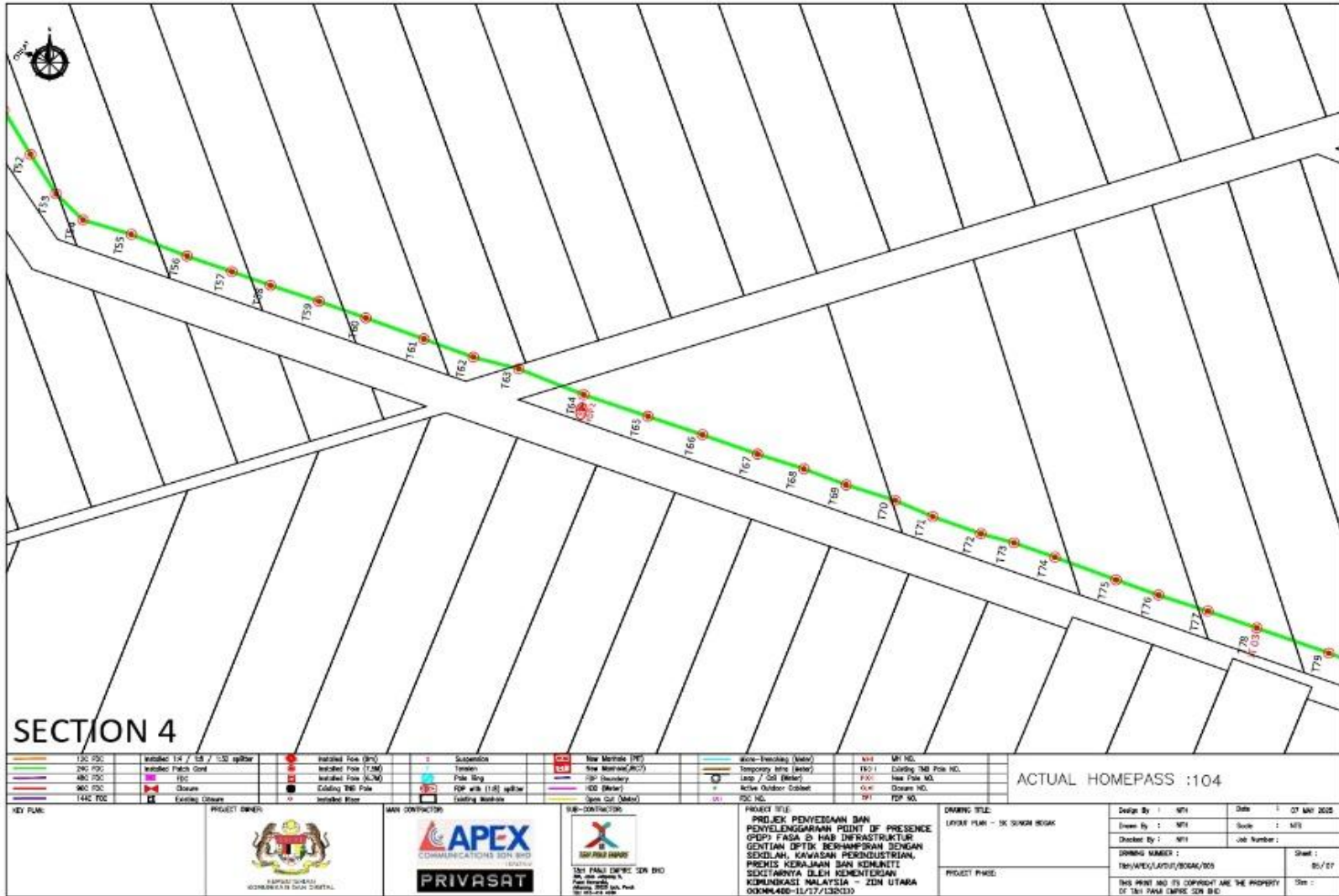
ACTUAL HOMEPASS : 104

# SECTION 3

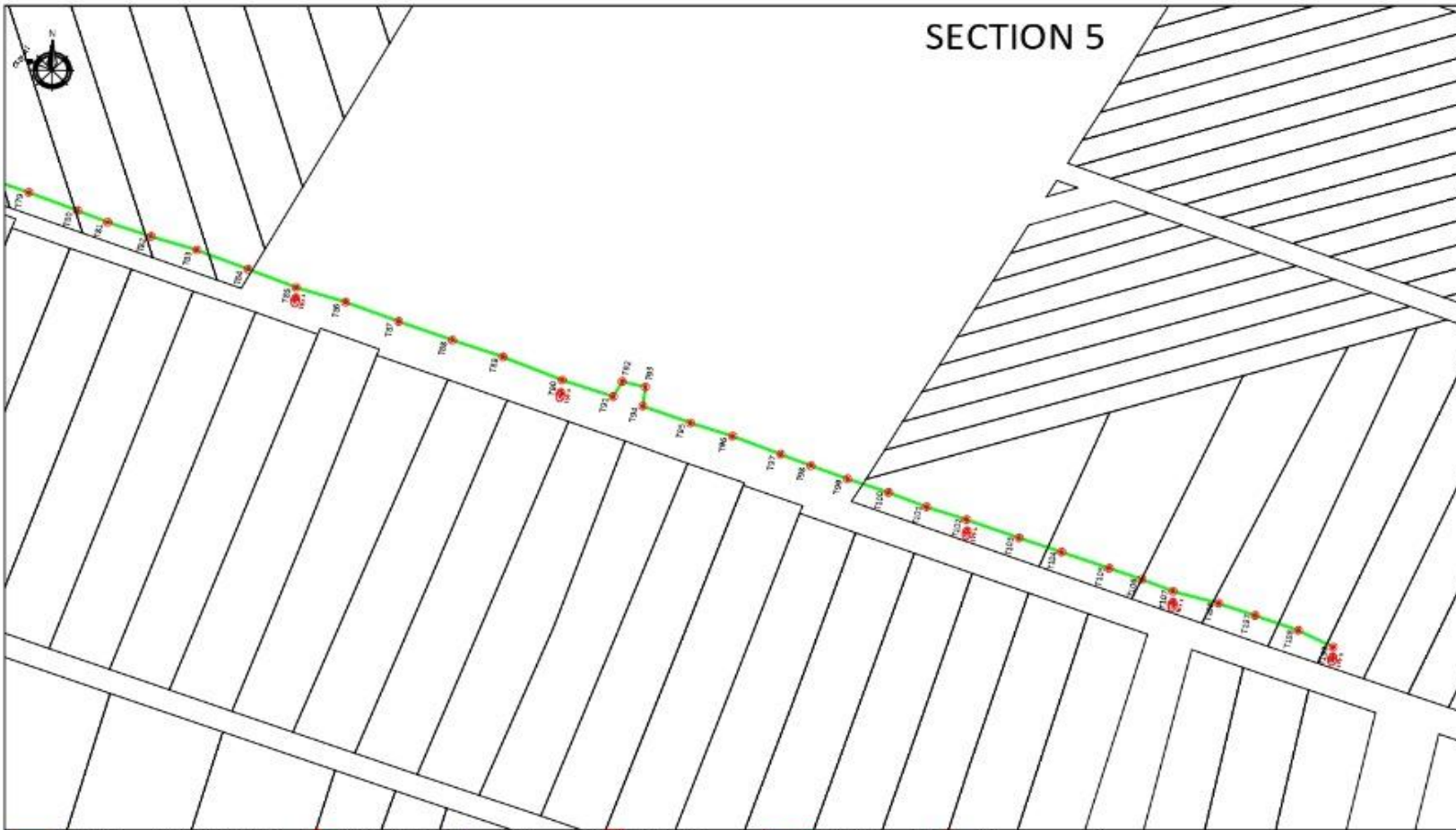


<table border="0"> <tr> <td>12C FOC</td> <td>Installed 12 / 18 / 120 splitter</td> <td>Installed Pole (5m)</td> <td>Support</td> <td>New Manhole (RM)</td> <td>Man-Terminating (Meter)</td> <td>MT NO.</td> </tr> <tr> <td>34C FOC</td> <td>Installed Patch Cord</td> <td>Installed Pole (7.5M)</td> <td>Terminator</td> <td>New Manhole (MCP)</td> <td>Support into (Meter)</td> <td>124-1 Existing MB Pole NO.</td> </tr> <tr> <td>48C FOC</td> <td>FOC</td> <td>Installed Pole (6.7M)</td> <td>Pole Ring</td> <td>FOC Boundary</td> <td>Loop / Coil (Meter)</td> <td>124-1 New Pole NO.</td> </tr> <tr> <td>93C FOC</td> <td>Change</td> <td>Existing TMB Pole</td> <td>OSP with 1:48 splitter</td> <td>120 (Meter)</td> <td>Active Outdoor Cabinet</td> <td>12-12 Change NO.</td> </tr> <tr> <td>144C FOC</td> <td>Existing Closure</td> <td>Installed Meter</td> <td>Existing Manhole</td> <td>Open Cut (Meter)</td> <td>FOC NO.</td> <td>021 FOP NO.</td> </tr> </table>	12C FOC	Installed 12 / 18 / 120 splitter	Installed Pole (5m)	Support	New Manhole (RM)	Man-Terminating (Meter)	MT NO.	34C FOC	Installed Patch Cord	Installed Pole (7.5M)	Terminator	New Manhole (MCP)	Support into (Meter)	124-1 Existing MB Pole NO.	48C FOC	FOC	Installed Pole (6.7M)	Pole Ring	FOC Boundary	Loop / Coil (Meter)	124-1 New Pole NO.	93C FOC	Change	Existing TMB Pole	OSP with 1:48 splitter	120 (Meter)	Active Outdoor Cabinet	12-12 Change NO.	144C FOC	Existing Closure	Installed Meter	Existing Manhole	Open Cut (Meter)	FOC NO.	021 FOP NO.	<p>PROJECT OWNER</p>  <p>KEMENTERIAN KOMUNIKASI DAN DIGITAL</p>	<p>MAIN CONTRACTOR</p>  <p><b>APEX</b> COMMUNICATIONS SDN BHD</p>	<p>SUB-CONTRACTOR</p>  <p><b>TERA PLUS</b> SDN BHD</p> <p>121 PULI DAPIC SDN BHD No. 121, Jalan Ampang 5, Mukim, 50000 Kuala Lumpur, Malaysia. Tel: 03-2033 4000 Fax: 03-2033 4000</p>	<p>PROJECT TITLE</p> <p>PROJEK PENYEDIAAN DAN PENYELANGKARAN POINT OF PRESENCE (POP) FASA 2I HAN INFRASTRUKTUR GENTIAN OPTIK BERHAMPIRAN DENGAN SEKELAH, KAWASAN PERINDUSTRIAN, PREMIS KERAJAAN DAN KOMUNITI SEKITARNYA OLEH KEMENTERIAN KOMUNIKASI MALAYSIA - ZON UTARA (0200K-10-11/17/18/19)</p>	<p>DRAWING TITLE</p> <p>LAYOUT PLAN - SK SUNGAI BOKAK</p>	<table border="0"> <tr> <td>Design By : MFI</td> <td>Date : 07 MAY 2025</td> </tr> <tr> <td>Drawn By : MFI</td> <td>Scale : NTS</td> </tr> <tr> <td>Checked By : MFI</td> <td>Job Number :</td> </tr> <tr> <td>DESIGN NUMBER :</td> <td>Sheet :</td> </tr> <tr> <td>121/AFD/LAYOUT/0804/004</td> <td>04/07</td> </tr> <tr> <td colspan="2">THIS PRINT AND ITS CONTENT ARE THE PROPERTY OF TERA PLUS SDN BHD</td> </tr> </table>	Design By : MFI	Date : 07 MAY 2025	Drawn By : MFI	Scale : NTS	Checked By : MFI	Job Number :	DESIGN NUMBER :	Sheet :	121/AFD/LAYOUT/0804/004	04/07	THIS PRINT AND ITS CONTENT ARE THE PROPERTY OF TERA PLUS SDN BHD	
12C FOC	Installed 12 / 18 / 120 splitter	Installed Pole (5m)	Support	New Manhole (RM)	Man-Terminating (Meter)	MT NO.																																															
34C FOC	Installed Patch Cord	Installed Pole (7.5M)	Terminator	New Manhole (MCP)	Support into (Meter)	124-1 Existing MB Pole NO.																																															
48C FOC	FOC	Installed Pole (6.7M)	Pole Ring	FOC Boundary	Loop / Coil (Meter)	124-1 New Pole NO.																																															
93C FOC	Change	Existing TMB Pole	OSP with 1:48 splitter	120 (Meter)	Active Outdoor Cabinet	12-12 Change NO.																																															
144C FOC	Existing Closure	Installed Meter	Existing Manhole	Open Cut (Meter)	FOC NO.	021 FOP NO.																																															
Design By : MFI	Date : 07 MAY 2025																																																				
Drawn By : MFI	Scale : NTS																																																				
Checked By : MFI	Job Number :																																																				
DESIGN NUMBER :	Sheet :																																																				
121/AFD/LAYOUT/0804/004	04/07																																																				
THIS PRINT AND ITS CONTENT ARE THE PROPERTY OF TERA PLUS SDN BHD																																																					

ACTUAL HOMEPASS :104



# SECTION 5



12C FOC	Installed 1.4 / 1.8 / 1.03 sp/box	Installed Pole (2m)	Suspension	New Manhole (PIT)	Micro-Trenching (Meter)	NY NO.
24C FOC	Installed Patch Cord	Installed Pole (3.0M)	Tension	New Manhole (SCV)	Temporary Info (Meter)	TC1- Coating IMB Pole NO.
48C FOC	FOC	Installed Pole (3.0M)	Pole Ring	FOC Protection	Line / 20M (Meter)	PO1- New Pole NO.
96C FOC	Shunt	Existing IMB Pole	EDP with 1.0M sp/box	150 (Meter)	Actual Outdoor Cabinet	CLM- Closure NO.
144C FOC	Existing Closure	Installed Elevator	Existing Manhole	Open Cut (Meter)	OH	OP1- ROP NO.

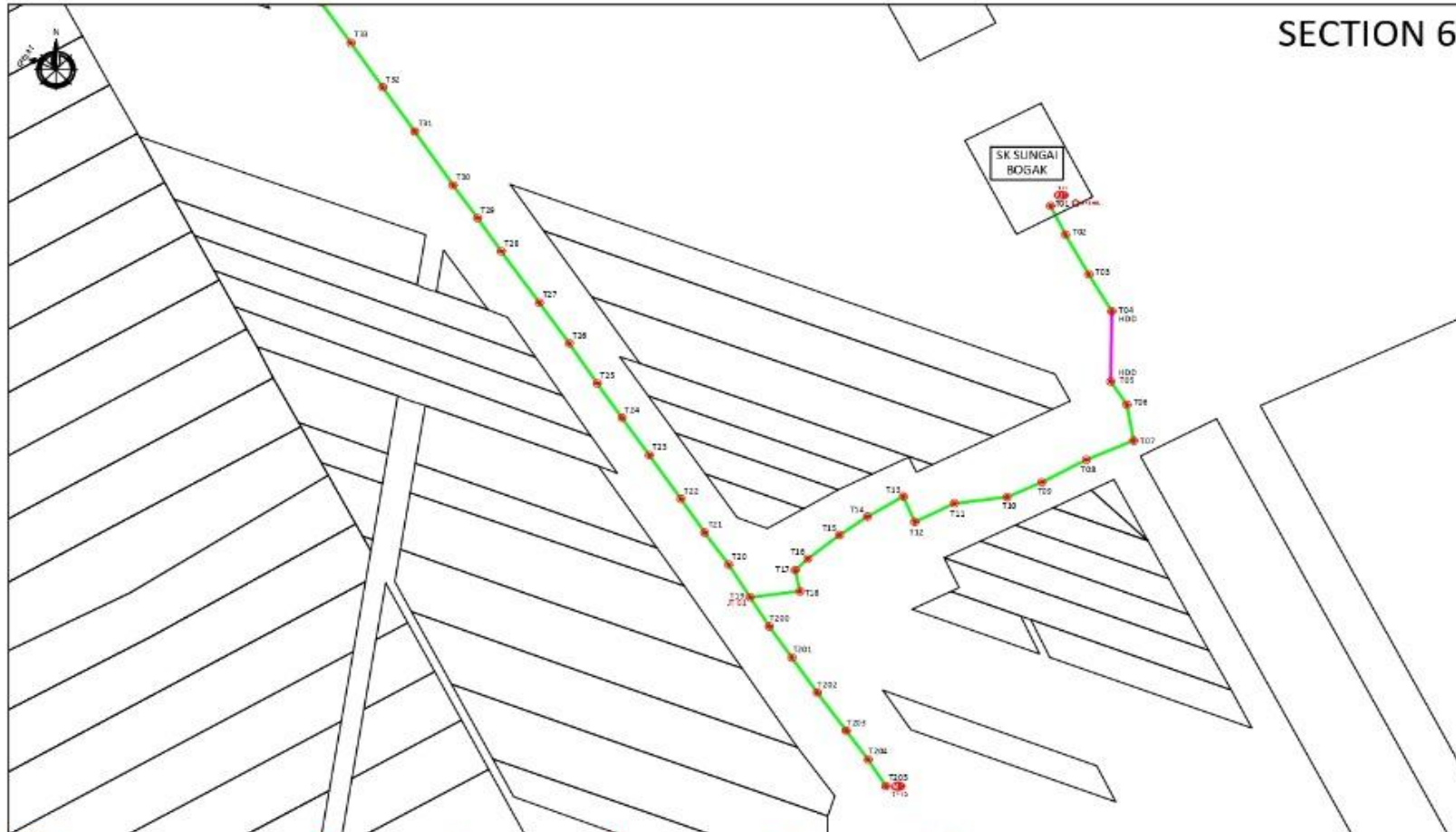
**ACTUAL HOMEPASS :104**

<p><b>KEY PLAN</b></p>	<p><b>PROJECT OWNER</b></p> <p>KOMUNIKASI MALAYSIA BERSEMITA</p>	<p><b>MAIN CONTRACTOR</b></p> <p><b>PRIVASAT</b></p>	<p><b>SUB-CONTRACTOR</b></p> <p>TM PANG DIPNE SDN BHD No. 10, Jalan 1/1, Pangsari, 40150 Telok Pangkajene, Kuala Lumpur, Malaysia Tel: 03-20-12-108</p>	<p><b>PROJECT TITLE</b> PROJEK PENYEDIAAN DAN PENYELANGKARAN POINT OF PRESENCE (POP) FASA 2i HAB INFRASTRUKTUR GENTIAN OPTIK BERHAMPPIRAN DENGAN SEKILAH, KAWASAN PERINDUSTRIAN, PREMIS KERAJAAN DAN KOMUNITI SEKITARNYA OLEH KEMENTERIAN KOMUNIKASI MALAYSIA – ZON UTARA (03004400-11/17/13213)</p>	<p><b>DRAWING TITLE</b> LAYOUT PLAN - SK SUNGAI BOSAK</p>	<p>Design By : NTH Drawn By : NTH Checked By : NTH</p>	<p>Date : 07 MAY 2025 Scale : NTS Job Number :</p>	<p>DRAWING NUMBER : 144/APEX/LA004/S024/006</p>	<p>Sheet : 06 / 07</p>
------------------------	--	--	---	--	---	--	--	---	----------------------------

**PROJECT PHASE**

THIS PRINT AND ITS COPYRIGHT ARE THE PROPERTY OF TM PANG DIPNE SDN BHD

# SECTION 6



12C FSC	Installed 1st / 1st / 5/22 splitter	Installed Pole (In)	Support	New Manhole (PT)	Micro-trenching (Meter)	M1 M1
24C FSC	Installed Patch Cord	Installed Pole (7.5M)	Tension	New Manhole (RCT)	Temporary Infra (Meter)	M2 M2
48C FSC	FOC	Installed Pole (18.1M)	Pole Ring	FOF Boundary	Latex / Coat (Meter)	M3 M3
96C FSC	Closure	Existing TNS Pole	FOF with 1.8M splitter	RIS (Meter)	Active Subscriber Location	M4 M4
144C FSC	Cabling Closure	Installed Pole	Cabling Manhole	Open Cut (Meter)	FSC NO.	M5 M5

**ACTUAL HOMEPASS : 104**

<p>PROJECT OWNER:</p>  <p>KEMENTERIAN KOMUNIKASI DAN DIGITAL</p>	<p>MAIN CONTRACTOR:</p>  <p><b>APEX</b> COMMUNICATIONS SDN BHD</p> <p>PRIVASAT</p>	<p>SUB-CONTRACTOR:</p>  <p>TSP PANG SAH</p> <p>181 PANG SAH SDN BHD No. 181, Jalan 1/1, Taman Perindustrian, 43000 Kajang, Selangor, Malaysia Tel: 03-8922 1000 Fax: 03-8922 1001</p>	<p>PROJECT TITLE:</p> <p>PROJEK PENYEDIAAN DAN PENYELANGGARAAN PONTIF DE PRESENCE (POP) FASA 2D HAB INFRASTRUKTUR GENTIAN OPTIK BERHAMPIRAN DENGAN SEKELAH KAWASAN PERINDUSTRIAN, PREMIS KERAJAAN DAN KOMUNITI SEKITARNYA OLEH KEMENTERIAN KOMUNIKASI MALAYSIA - ZON UTARA (000M400-11/17/132103)</p>	<p>DRAWING TITLE:</p> <p>LAYAT PUN - SK SILINGAI BOSAK</p>	<p>Design By : MHI</p> <p>Drawn By : MHI</p> <p>Checked By : MHI</p> <p>DRAWING NUMBER :</p> <p>181/APEX/UMH/2024/301</p> <p>PROJECT PHASE:</p>	<p>Date : 07 MAR 2025</p> <p>Scale : KTS</p> <p>Job Number :</p> <p>Sheet : 01 / 01</p> <p>Star :</p>
---	---	---	---	--	---	---

THIS PRINT AND ITS COPYRIGHT ARE THE PROPERTY OF TSP PANG SAH SDN BHD.