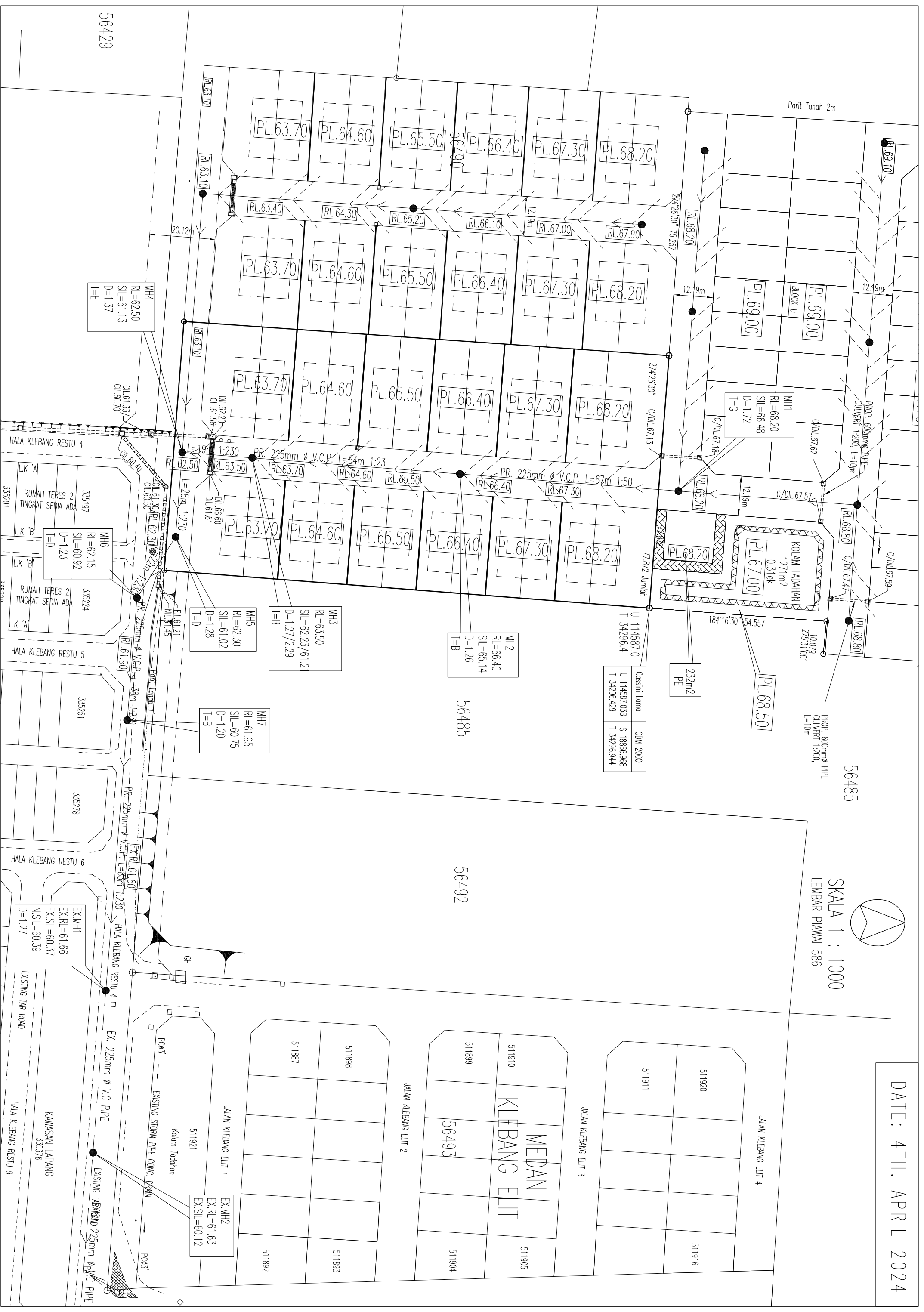
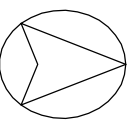


DATE: 4TH. APRIL 2024

SKALA 1 : 1000
LEMBAR PAWAI 586



Cassini Lomo	GDM 2000
U 114587.0	S 18866.968
T 34296.4	T 34296.944

- MH3
RL=63.50
SIL=62.23/61.2
D=1.27/2.29
T=B
- MH2
RL=66.40
SIL=65.14
D=1.26
T=B
- MH5
RL=62.30
SIL=61.02
D=1.28
T=D
- MH7
RL=61.95
SIL=60.75
D=1.20
T=B

MH4
RL=62.50
SIL=61.13
D=1.37
T=E

MH6
RL=62.15
SIL=60.92
D=1.23
T=D

EX.MH1
EX.RL=61.66
EX.SIL=60.37
N.SIL=60.39
D=1.27

EX.MH2
EX.RL=61.63
EX.SIL=60.12

56429
HALA KLEBANG RESTU 4
RUMAH TERES 2 TINGKAT SEDIA ADA
L.K 'A'
L.K 'B'
RUMAH TERES 2 TINGKAT SEDIA ADA
L.K 'A'
L.K 'B'
HALA KLEBANG RESTU 5
HALA KLEBANG RESTU 6
KAWASAN LAPANG
EXISTING TAR ROAD
HALA KLEBANG RESTU 9

