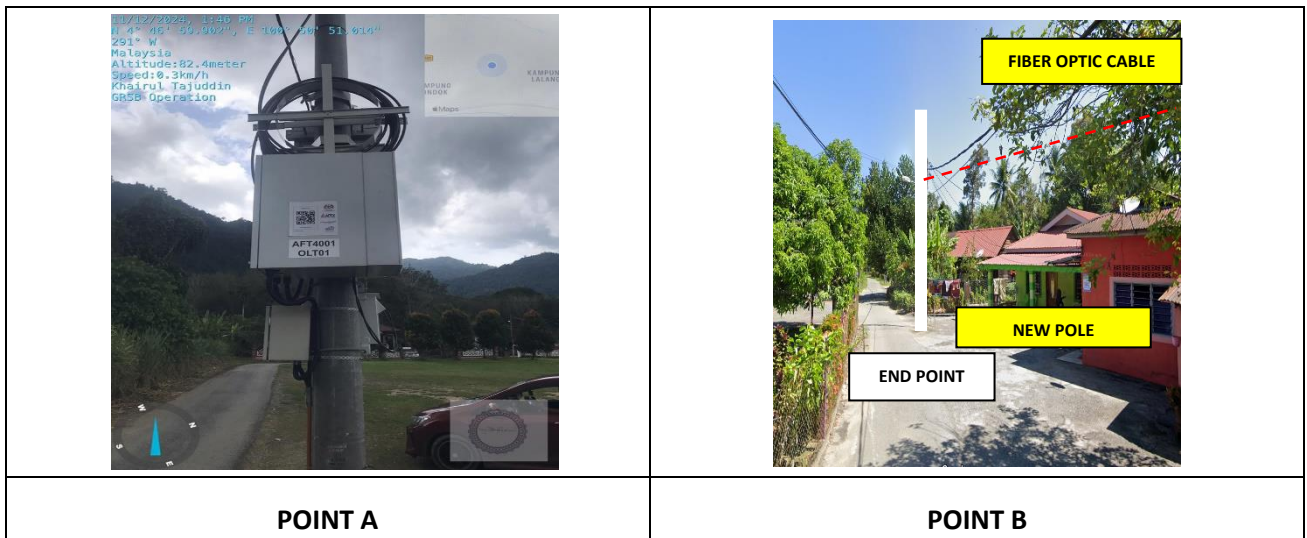


TECHNICAL PROPOSAL

AFT4001 SEKOLAH MENENGAH AGAMA AD-DINIAH AL-ISLAMIAH (D-SIDE)

Company Name : ARATIMUR SDN BHD
Company Address : A-08-13, 8th Floor, Block A, Radia Office, Persiaran Singgahsana, 40150 Bukit Jelutong, Shah Alam, Selangor
Prepared By : Khairul Tajuddin
Date : 24/01/2025





Starting Point

Site / Boundary Name : Sekolah Menengah Agama Ad- Diniyah Al-Islamiah
 Address : Kampung Lalang,
 District : Padang Rengas
 Postcode : 33700
 State : Perak
 GPS Coordinate : 4.783185509, 100.8485265
 LRD : A

End Point

Site / Boundary Name : Kampung Sungai Ati
 Address : Kampung Sungai Ati
 District : Padang Rengas
 Postcode : 33500
 State : Perak
 GPS Coordinate : 4.79284, 100.85038
 LRD : B

	<p align="center">PROJEK PENYEDIAAN DAN PENYELENGGARAAN POINT OF PRESENCE (POP) FASA 2: HAB INFRASTRUKTUR GENTIAN OPTIK BERHAMPIRAN DENGAN SEKOLAH, KAWASAN PERINDUSTRIAN, PREMIS KERAJAAN DAN KOMUNITI SEKITARNYA OLEH KEMENTERIAN KOMUNIKASI MALAYSIA - ZON UTARA (KKMM.400-11/17/132(1))</p>	
---	--	---

1.0 WORK SUMMARY

NO	PROPOSED DISTANCE AND METHOD	UNIT	QUANTITY
1	Horizontal Directional Drilling (HDD)	m	0
2	Carriage Way Open Trench (CW)	m	0
3	Grass Verge Open Trenching (GV)	m	0
4	Micro Trenching (MT)	m	0
	Total		0

NO	OTHER INFORMATION	UNIT	QUANTITY
1	Installation of Short Span ADSS Fibre Cables	m	3897
2	Install New Pole	ea	108
3	Install New JRC7 Manhole	ea	0
4	Install GI Riser 100mm	ea	0
5	Install Fiber Distribution Point and Closure (Splicing, Termination and Testing	ea	19
6	Estimated Time Required For Completion	days	30

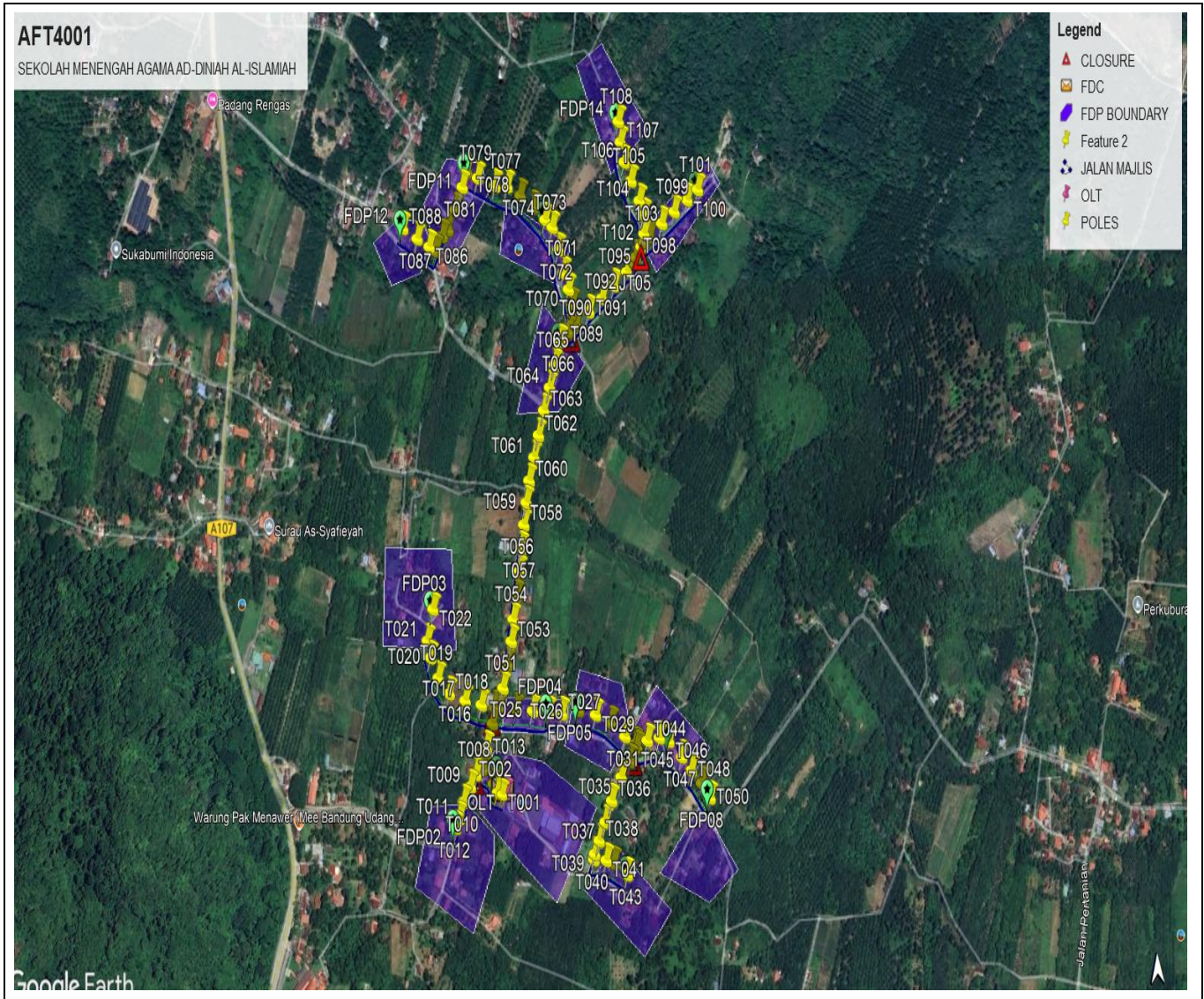
2.0 LOCAL AUTHORITY SUMMARY

Daerah Kuala Kangsar

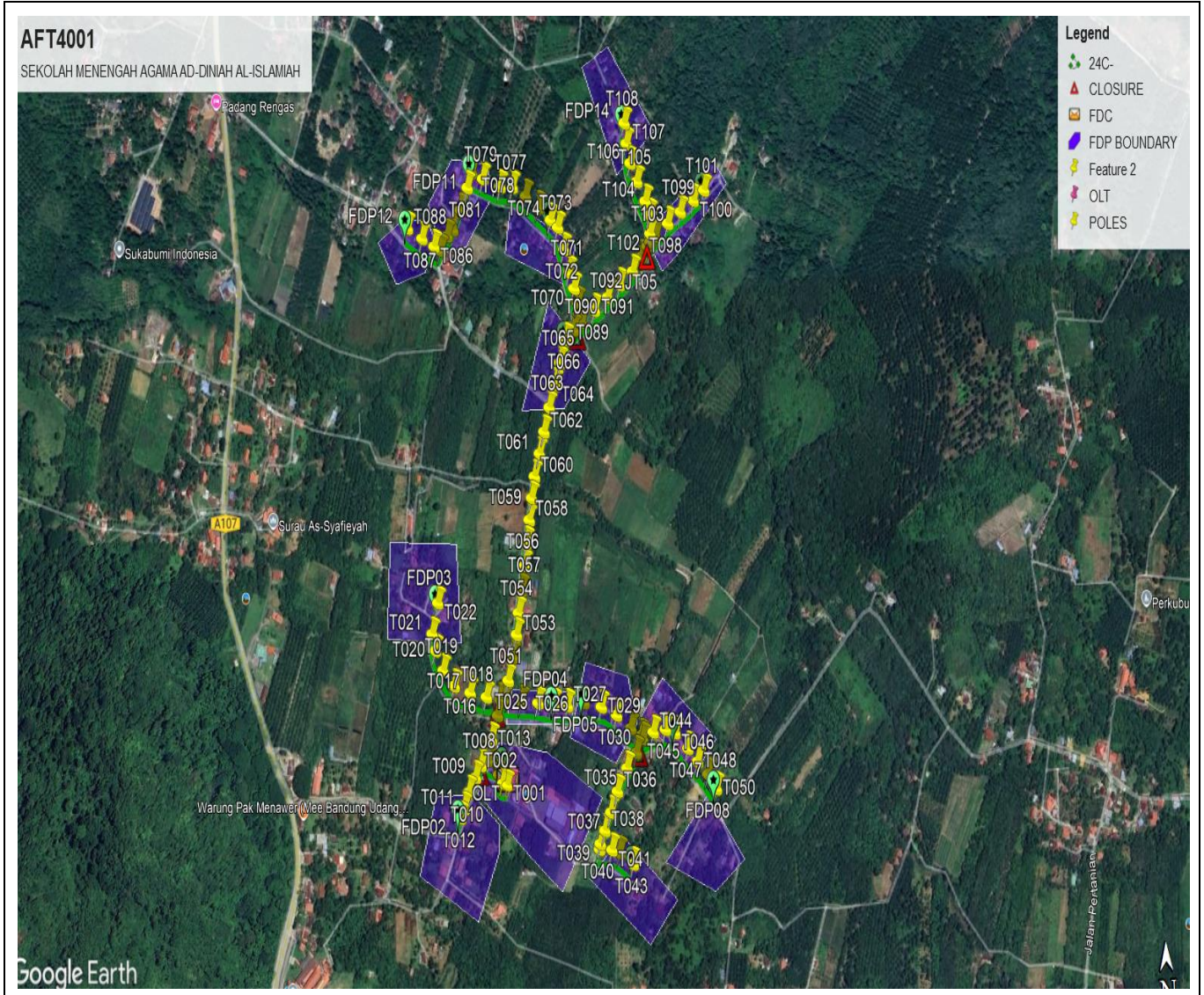
NO	ITEMS	OWNER	QUANTITY	DISTANCE (m)
1	HDD	JKR	-	-
		Majlis	-	-
		Estate / Private Land	-	-
2	New Pole	JKR	-	-
		Majlis	108	3897
		Estate / Private Land	-	-
Total distance (m)				3897

3.0 SITE PLAN- KMZ

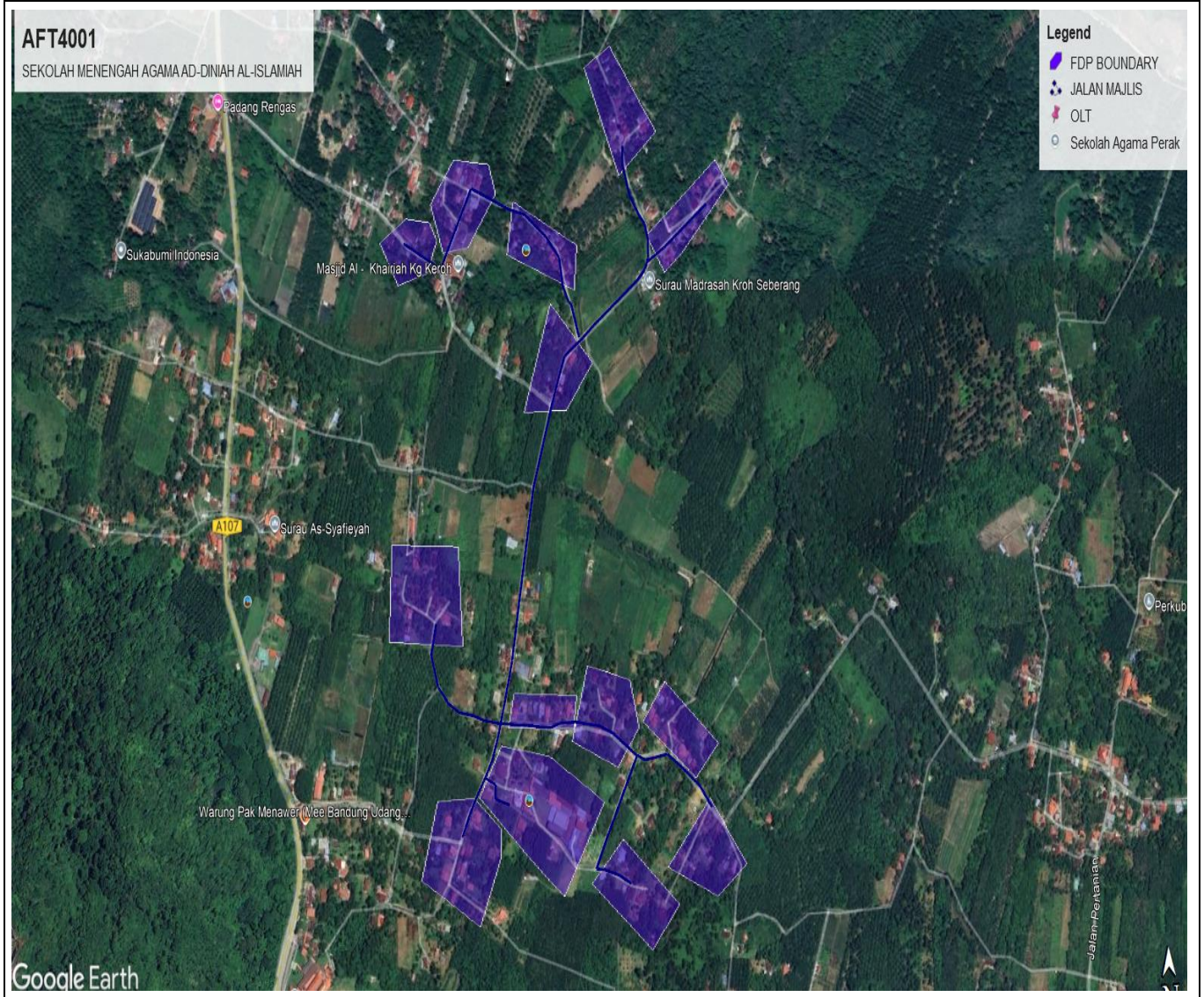
3.1 Overview Site Area



3.2 Site Boundry



3.3 Road Boundry



4.0 PROPOSED MANHOLE & HDD AND NEW POLE

No.	Pole & Manhole ID	Distance	Latitude	Longitude	Local Authority
1	FDC		4.783365	100.847492	Majlis Perbandaran Kuala Kangsar
2	T001	35	4.783372	100.847424	Majlis Perbandaran Kuala Kangsar
3	T002	35	4.783404	100.847319	Majlis Perbandaran Kuala Kangsar
4	T003	35	4.783530	100.847230	Majlis Perbandaran Kuala Kangsar
5	T004	35	4.783641	100.847370	Majlis Perbandaran Kuala Kangsar
6	T005	35	4.783661	100.847242	Majlis Perbandaran Kuala Kangsar
7	T006	35	4.783740	100.847030	Majlis Perbandaran Kuala Kangsar
8	T007	35	4.783766	100.846942	Majlis Perbandaran Kuala Kangsar
9	T008	35	4.783658	100.846865	Majlis Perbandaran Kuala Kangsar
10	T009	35	4.783492	100.846741	Majlis Perbandaran Kuala Kangsar
11	T010	35	4.783287	100.846591	Majlis Perbandaran Kuala Kangsar
12	T011	35	4.783053	100.846479	Majlis Perbandaran Kuala Kangsar
13	T012	35	4.782922	100.846399	Majlis Perbandaran Kuala Kangsar
14	T013	35	4.784026	100.847103	Majlis Perbandaran Kuala Kangsar
15	T014	35	4.784366	100.847251	Majlis Perbandaran Kuala Kangsar
16	T015	35	4.784591	100.847311	Majlis Perbandaran Kuala Kangsar
17	T016	35	4.784641	100.847023	Majlis Perbandaran Kuala Kangsar
18	T017	35	4.784719	100.846679	Majlis Perbandaran Kuala Kangsar
19	T018	35	4.784835	100.846341	Majlis Perbandaran Kuala Kangsar
20	T019	35	4.785065	100.846111	Majlis Perbandaran Kuala Kangsar
21	T020	35	4.785362	100.845952	Majlis Perbandaran Kuala Kangsar
22	T021	35	4.785606	100.845897	Majlis Perbandaran Kuala Kangsar
23	T022	35	4.786052	100.846040	Majlis Perbandaran Kuala Kangsar
24	T023	35	4.784573	100.847403	Majlis Perbandaran Kuala Kangsar
25	T024	35	4.784536	100.847769	Majlis Perbandaran Kuala Kangsar
26	T025	35	4.784506	100.848125	Majlis Perbandaran Kuala Kangsar
27	T026	35	4.784466	100.848461	Majlis Perbandaran Kuala Kangsar
28	T027	35	4.784438	100.848752	Majlis Perbandaran Kuala Kangsar
29	T028	35	4.784467	100.849107	Majlis Perbandaran Kuala Kangsar
30	T029	35	4.784388	100.849476	Majlis Perbandaran Kuala Kangsar
31	T030	35	4.784251	100.849797	Majlis Perbandaran Kuala Kangsar
32	T031	35	4.784042	100.850093	Majlis Perbandaran Kuala Kangsar
33	T032	35	4.783926	100.850310	Majlis Perbandaran Kuala Kangsar
34	T033	35	4.783875	100.850343	Majlis Perbandaran Kuala Kangsar
35	T034	35	4.783684	100.850196	Majlis Perbandaran Kuala Kangsar
36	T035	35	4.783473	100.849984	Majlis Perbandaran Kuala Kangsar
37	T036	35	4.783156	100.849764	Majlis Perbandaran Kuala Kangsar
38	T037	35	4.782860	100.849611	Majlis Perbandaran Kuala Kangsar
39	T038	35	4.782601	100.849471	Majlis Perbandaran Kuala Kangsar
40	T039	35	4.782414	100.849363	Majlis Perbandaran Kuala Kangsar
41	T040	35	4.782332	100.849343	Majlis Perbandaran Kuala Kangsar
42	T041	35	4.782308	100.849607	Majlis Perbandaran Kuala Kangsar
43	T042	35	4.782256	100.849766	Majlis Perbandaran Kuala Kangsar
44	T043	35	4.782075	100.850056	Majlis Perbandaran Kuala Kangsar
45	T044	35	4.783963	100.850572	Majlis Perbandaran Kuala Kangsar
46	T045	35	4.783990	100.850835	Majlis Perbandaran Kuala Kangsar
47	T046	35	4.783930	100.851041	Majlis Perbandaran Kuala Kangsar

48	T047	35	4.783693	100.851303	Majlis Perbandaran Kuala Kangsar
49	T048	35	4.783491	100.851503	Majlis Perbandaran Kuala Kangsar
50	T049	35	4.783296	100.851716	Majlis Perbandaran Kuala Kangsar
51	T050	35	4.783080	100.851888	Majlis Perbandaran Kuala Kangsar
52	T051	35	4.784859	100.847497	Majlis Perbandaran Kuala Kangsar
53	T052	35	4.785191	100.847612	Majlis Perbandaran Kuala Kangsar
54	T053	35	4.785516	100.847707	Majlis Perbandaran Kuala Kangsar
55	T054	35	4.785828	100.847762	Majlis Perbandaran Kuala Kangsar
56	T055	35	4.786153	100.847841	Majlis Perbandaran Kuala Kangsar
57	T056	35	4.786506	100.847921	Majlis Perbandaran Kuala Kangsar
58	T057	35	4.786835	100.847974	Majlis Perbandaran Kuala Kangsar
59	T058	35	4.787168	100.848050	Majlis Perbandaran Kuala Kangsar
60	T059	35	4.787485	100.848118	Majlis Perbandaran Kuala Kangsar
61	T060	35	4.787795	100.848194	Majlis Perbandaran Kuala Kangsar
62	T061	35	4.788124	100.848316	Majlis Perbandaran Kuala Kangsar
63	T062	35	4.788436	100.848428	Majlis Perbandaran Kuala Kangsar
64	T063	35	4.788784	100.848558	Majlis Perbandaran Kuala Kangsar
65	T064	35	4.789106	100.848700	Majlis Perbandaran Kuala Kangsar
66	T065	35	4.789425	100.848819	Majlis Perbandaran Kuala Kangsar
67	T066	35	4.789755	100.848960	Majlis Perbandaran Kuala Kangsar
68	T067	35	4.789888	100.849132	Majlis Perbandaran Kuala Kangsar
69	T068	35	4.789985	100.849306	Majlis Perbandaran Kuala Kangsar
70	T069	35	4.790276	100.849238	Majlis Perbandaran Kuala Kangsar
71	T070	35	4.790492	100.849170	Majlis Perbandaran Kuala Kangsar
72	T071	35	4.790731	100.849072	Majlis Perbandaran Kuala Kangsar
73	T072	35	4.791071	100.848975	Majlis Perbandaran Kuala Kangsar
74	T073	35	4.791396	100.848861	Majlis Perbandaran Kuala Kangsar
75	T074	35	4.791509	100.848712	Majlis Perbandaran Kuala Kangsar
76	T075	35	4.791698	100.848460	Majlis Perbandaran Kuala Kangsar
77	T076	35	4.791874	100.848194	Majlis Perbandaran Kuala Kangsar
78	T077	35	4.792015	100.847917	Majlis Perbandaran Kuala Kangsar
79	T078	35	4.792030	100.847656	Majlis Perbandaran Kuala Kangsar
80	T079	35	4.792160	100.847289	Majlis Perbandaran Kuala Kangsar
81	T080	35	4.792263	100.847060	Majlis Perbandaran Kuala Kangsar
82	T081	35	4.792046	100.846955	Majlis Perbandaran Kuala Kangsar
83	T082	35	4.791727	100.846790	Majlis Perbandaran Kuala Kangsar
84	T083	35	4.791451	100.846618	Majlis Perbandaran Kuala Kangsar
85	T084	35	4.791367	100.846491	Majlis Perbandaran Kuala Kangsar
86	T085	35	4.791163	100.846338	Majlis Perbandaran Kuala Kangsar
87	T086	35	4.791230	100.846201	Majlis Perbandaran Kuala Kangsar
88	T087	35	4.791356	100.845949	Majlis Perbandaran Kuala Kangsar
89	T088	35	4.791518	100.845646	Majlis Perbandaran Kuala Kangsar
90	T089	35	4.790155	100.849594	Majlis Perbandaran Kuala Kangsar
91	T090	35	4.790332	100.849887	Majlis Perbandaran Kuala Kangsar
92	T091	35	4.790507	100.850155	Majlis Perbandaran Kuala Kangsar
93	T092	35	4.790688	100.850444	Majlis Perbandaran Kuala Kangsar
94	T093	35	4.790800	100.850615	Majlis Perbandaran Kuala Kangsar
95	T094	35	4.790892	100.850644	Majlis Perbandaran Kuala Kangsar
96	T095	35	4.791033	100.850768	Majlis Perbandaran Kuala Kangsar
97	T096	35	4.791092	100.850835	Majlis Perbandaran Kuala Kangsar
98	T097	35	4.791166	100.850954	Majlis Perbandaran Kuala Kangsar
99	T098	35	4.791342	100.851226	Majlis Perbandaran Kuala Kangsar



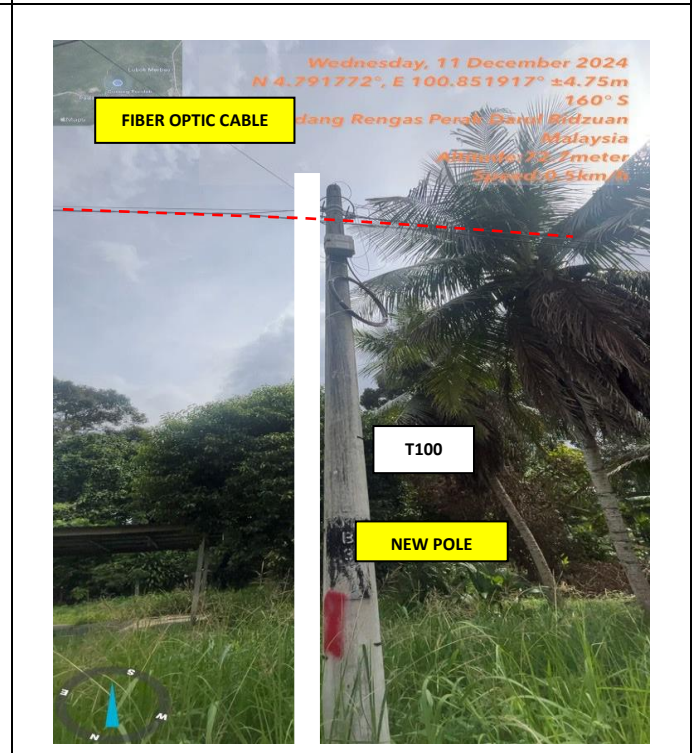
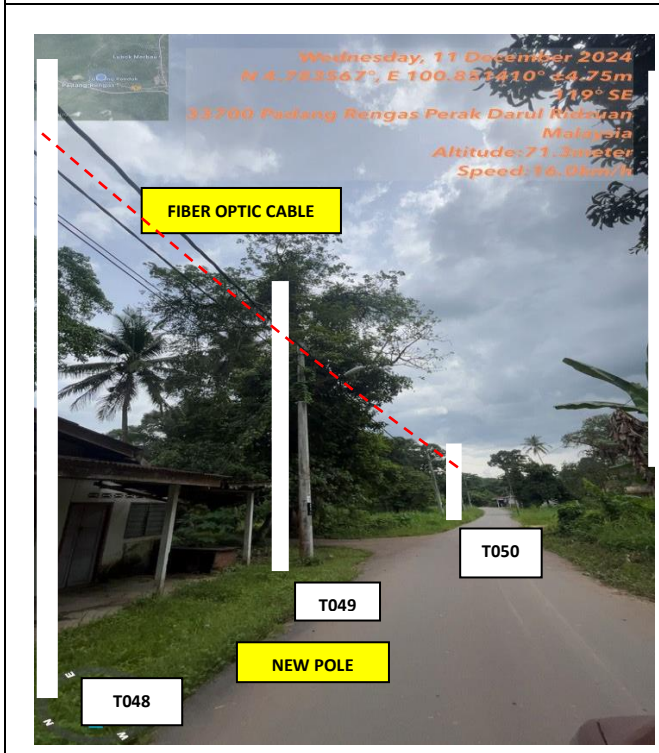
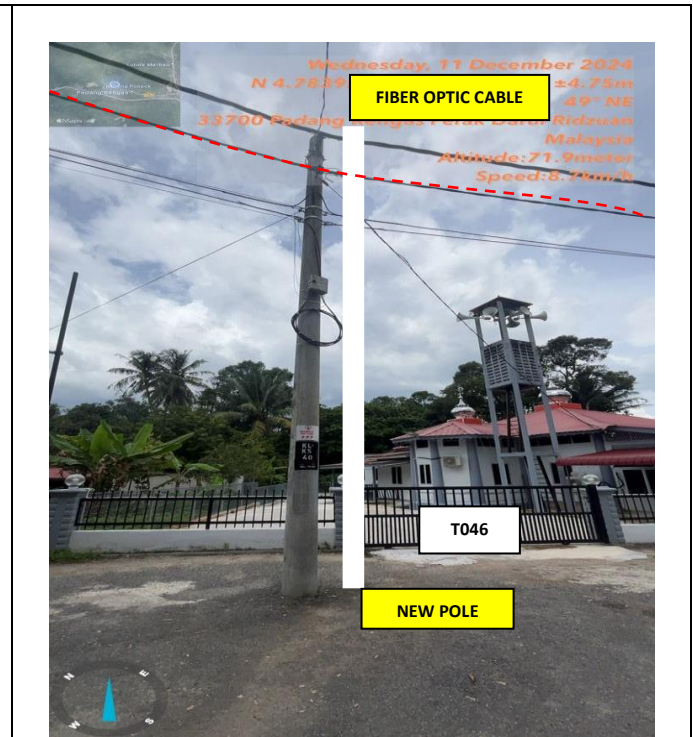
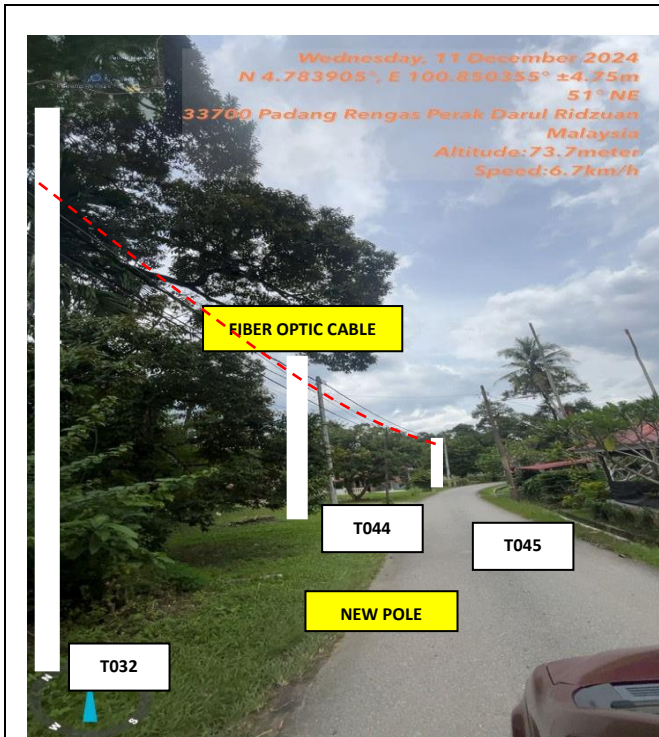
**PROJEK PENYEDIAAN DAN PENYELENGGARAAN POINT OF PRESENCE (POP)
 FASA 2: HAB INFRASTRUKTUR GENTIAN OPTIK BERHAMPIRAN DENGAN
 SEKOLAH, KAWASAN PERINDUSTRIAN, PREMIS KERAJAAN DAN KOMUNITI
 SEKITARNYA OLEH KEMENTERIAN KOMUNIKASI MALAYSIA - ZON UTARA
 (KKMM.400-11/17/132(1))**





100	T099	35	4.791495	100.851502	Majlis Perbandaran Kuala Kangsar
101	T100	35	4.791646	100.851788	Majlis Perbandaran Kuala Kangsar
102	T101	35	4.791785	100.852018	Majlis Perbandaran Kuala Kangsar
103	T102	35	4.791215	100.850840	Majlis Perbandaran Kuala Kangsar
104	T103	35	4.791483	100.850841	Majlis Perbandaran Kuala Kangsar
105	T104	35	4.791688	100.850758	Majlis Perbandaran Kuala Kangsar
106	T105	35	4.791979	100.850589	Majlis Perbandaran Kuala Kangsar
107	T106	35	4.792258	100.850458	Majlis Perbandaran Kuala Kangsar
108	T107	35	4.792547	100.850389	Majlis Perbandaran Kuala Kangsar
109	T108	35	4.792843	100.850357	Majlis Perbandaran Kuala Kangsar

5.0 SITE PHOTO- PROPOSED NEW POLE

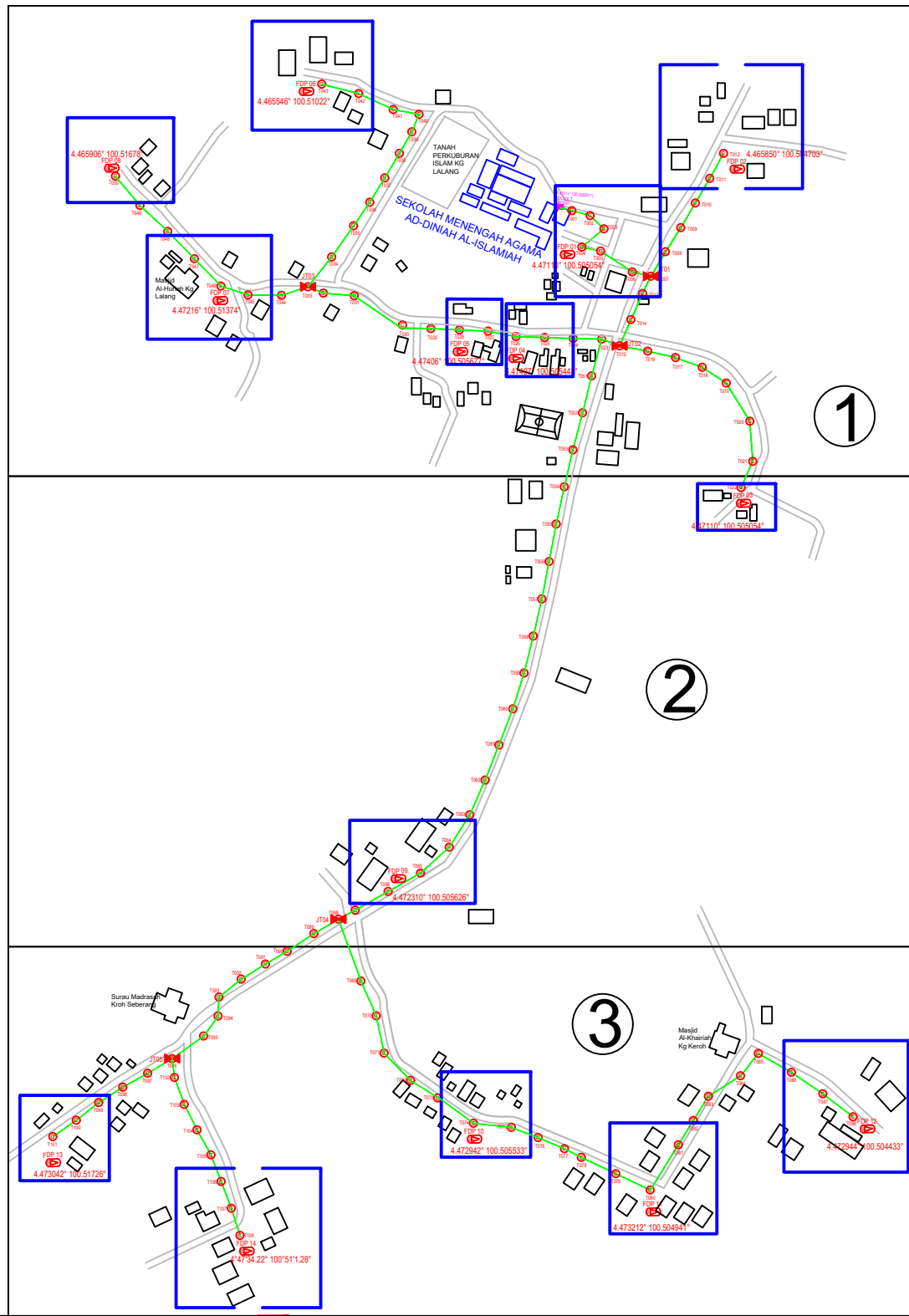




	<p align="center">PROJEK PENYEDIAAN DAN PENYELENGGARAAN POINT OF PRESENCE (POP) FASA 2: HAB INFRASTRUKTUR GENTIAN OPTIK BERHAMPIRAN DENGAN SEKOLAH, KAWASAN PERINDUSTRIAN, PREMIS KERAJAAN DAN KOMUNITI SEKITARNYA OLEH KEMENTERIAN KOMUNIKASI MALAYSIA - ZON UTARA (KKMM.400-11/17/132(1))</p>	
---	--	---

6.0 3rd PARTIES DEPENDENCIES

NO.	LOCAL COUNCIL/ AUTHORITY	REMARK
1	Majlis Perbandaran Kuala Kangsar	



	12C FOC		Installed 1:4 / 1:8 / 1:32 splitter		Installed Pole (9m)		Suspension		New Manhole (PIT)		Micro-Trenching (Meter)		MH1	MH NO.
	24C FOC	3897	Installed Patch Cord		Installed Pole (7.5M)		Tension		New Manhole (JRC7)		Temporary Infra (Meter)		TKS-1	Existing TNB Pole NO.
	48C FOC		FDC		Installed Pole (6.7M)		Pole Ring		FDP Boundary		Loop / Coil (Meter)		P001	New Pole NO.
	96C FOC		Closure		Existing TNB Pole		FDP with (1:8) splitter		HDD (Meter)		Active Outdoor Cabinet		CL01	Closure NO.
	144C FOC		Existing Closure		Installed Riser		Existing Manhole		Open Cut (Meter)		C01	FDC NO.	DP1	FDP NO.

ACTUAL HOMEPASS :

KEY PLAN:	OWNER / DEVELOPER:	MAIN CONTRACTOR:	SUB-CONTRACTOR:	PROJECT TITLE:	DRAWING TITLE:	Design By : 14-2-2025
		 PRIVASAT	 AraTimur Sdn Bhd A-08-13, 8th Floor, Block A, Radia Office, Persiaran Singahsana 40150 Bukit Jelutong Shah Alam, Selangor Darul Ehsan	AFT4001 SEKOLAH MENENGAH AGAMA AD-DINIAH AL-ISLAMIAH	CONSTRUCTION DRAWING AFT4001 SEKOLAH MENENGAH AGAMA AD-DINIAH AL-ISLAMIAH	Date : 14-2-2025
					PROJECT PHASE:	Scale : NOT TO SCALE
						Job Number :
						Sheet :
						Size :

THIS PRINT AND ITS COPYRIGHT ARE THE PROPERTY OF ALLO TECHNOLOGY SDN BHD

