

TECHNICAL PROPOSAL

POP2 ABA7005 SEKOLAH KEBANGSAAN TASEK (D-SIDE)

Company Name : WabTech Sdn Bhd
Company Address : 101-1, Jalan Metro Sendayan, 71950, Seremban, Negeri Sembilan.
Prepared By : Mohd Farid bin Othman
Date : 17/02/2025



Point A



Point B

Starting Point

Site / Boundary Name : Sekolah Kebangsaan Tasek
Address : Jalan Tasek, Kampung Baru Tasek, 33100, Pengkalan Hulu, Perak.
District : Pengkalan Hulu
Postcode : 33100
State : Perak
GPS Coordinate : 5.665168, 100.974925
LRD : A

End Point

Site / Boundary Name : Jalan Mawar, Kampung Baru Tasek
Address : Jalan Mawar, Kampung Baru Tasek, 33100, Pengkalan Hulu, Perak.
District : Pengkalan Hulu
Postcode : 33100
State : Perak
GPS Coordinate : 5.667548, 100.972887
LRD : B



PROJEK PENYEDIAAN DAN PENYELENGGARAAN POINT OF PRESENCE (POP)
FASA 2: HAB INFRASTRUTUK GENTIAN OPTIK BERHAMPIRAN DENGAN
SEKOLAH, KAWASAN PERINDUSTRIAN, PREMIS KERAJAAN DAN KOMUNITI
SEKITARNYA OLEH KEMENTERIAN KOMUNIKASI MALAYSIA – ZON UTARA
(KKMM.400-11/17/132(1))



WABTECH SDN BHD
(1398887-X)

1.0 WORK SUMMARY

NO	PROPOSED DISTANCE AND METHOD	UNIT	QUANTITY
1	Horizontal Directional Drilling (HDD)	m	0
2	Carriage Way Open Trench (CW)	m	0
3	Grass Verge Open Trenching (GV)	m	0
4	Micro Trenching (MT)	m	0
Total			

NO	OTHER INFORMATION	UNIT	QUANTITY
1	Installation of Short Span ADSS Fibre Cables	m	2674m
2	Install New Pole	ea	65
3	Install New JRC7 Manhole	ea	0
4	Install GI Riser 100mm	ea	0
5	Install Fiber Distribution Point and Closure (Splicing, Termination and Testing)	ea	17
6	Estimated Time Required for Completion	days	30



PROJEK PENYEDIAAN DAN PENYELENGGARAAN POINT OF PRESENCE (POP)
FASA 2: HAB INFRASTRUTUK GENTIAN OPTIK BERHAMPIRAN DENGAN
SEKOLAH, KAWASAN PERINDUSTRIAN, PREMIS KERAJAAN DAN KOMUNITI
SEKITARNYA OLEH KEMENTERIAN KOMUNIKASI MALAYSIA – ZON UTARA
(KKMM.400-11/17/132(1))



WABTECH SDN BHD
(1398887-X)

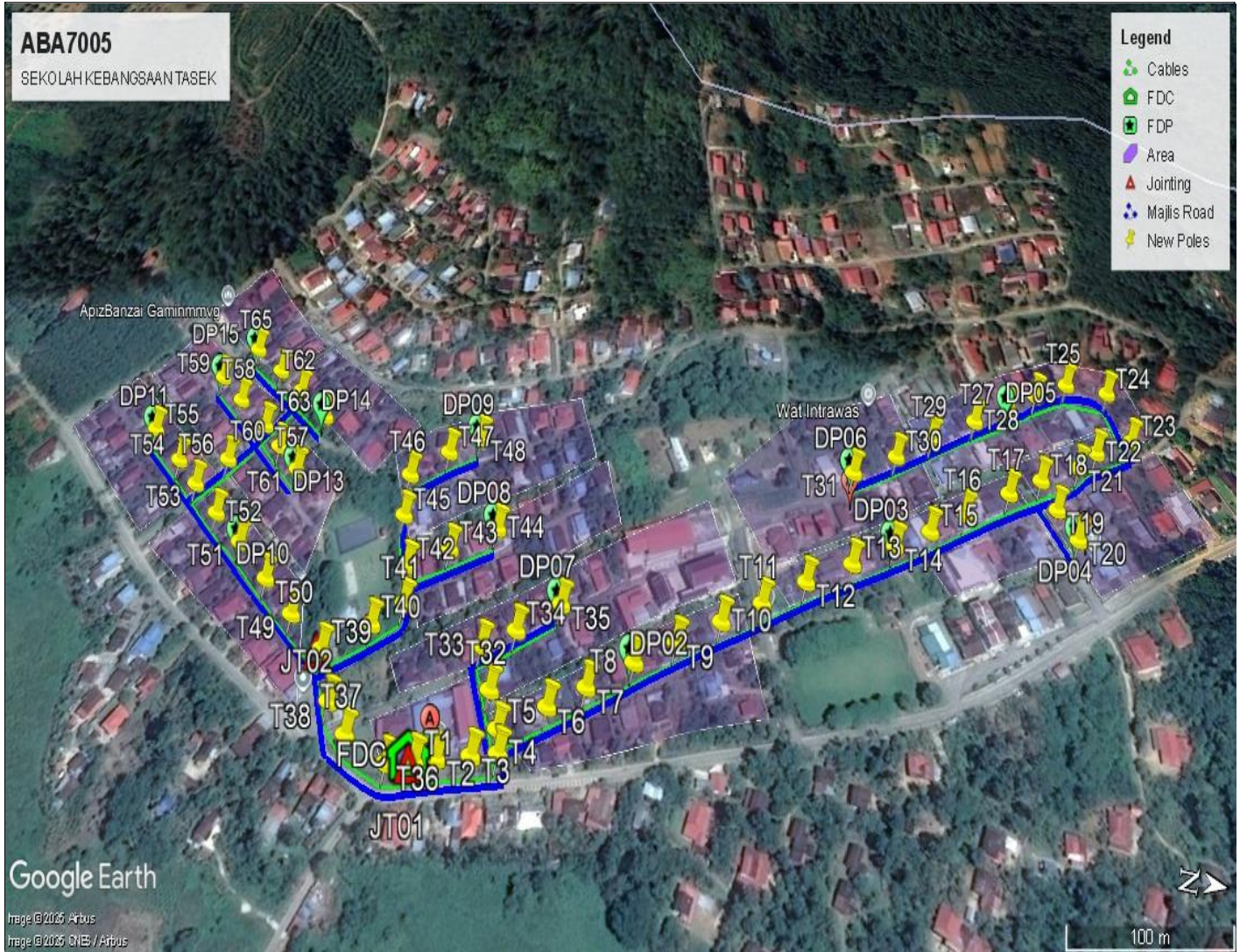
2.0 LOCAL AUTHORITY SUMMARY

Daerah Pengkalan Hulu

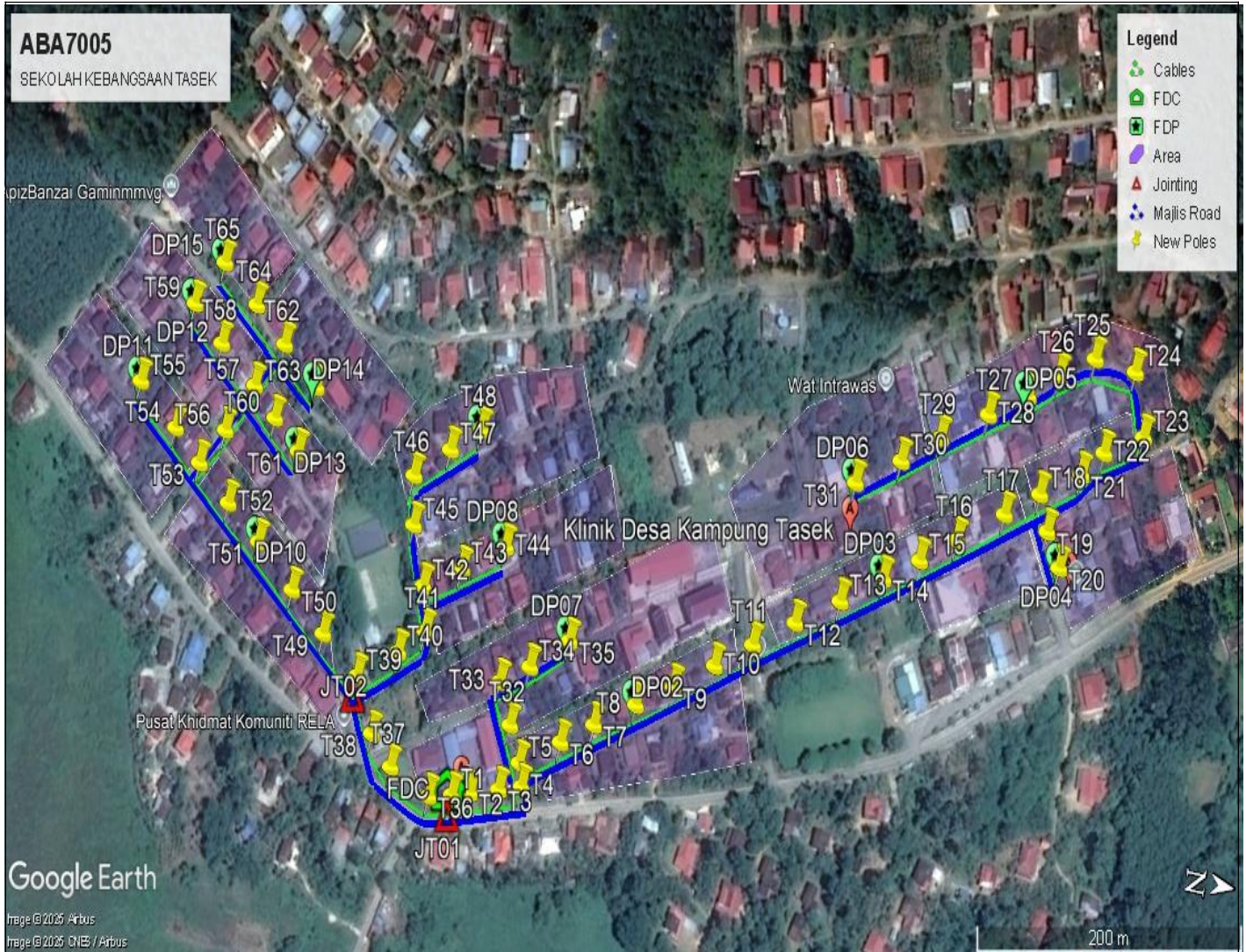
NO	ITEMS	Owner	Quantity	Distance (m)
1	HDD	JKR	-	-
		Majlis	-	-
		PDT	-	-
2	New Pole	JKR	-	-
		Majlis	65	1979
		PDT	-	-
Total Distance (m)				1979

3.0 SITE PLAN (KMZ)

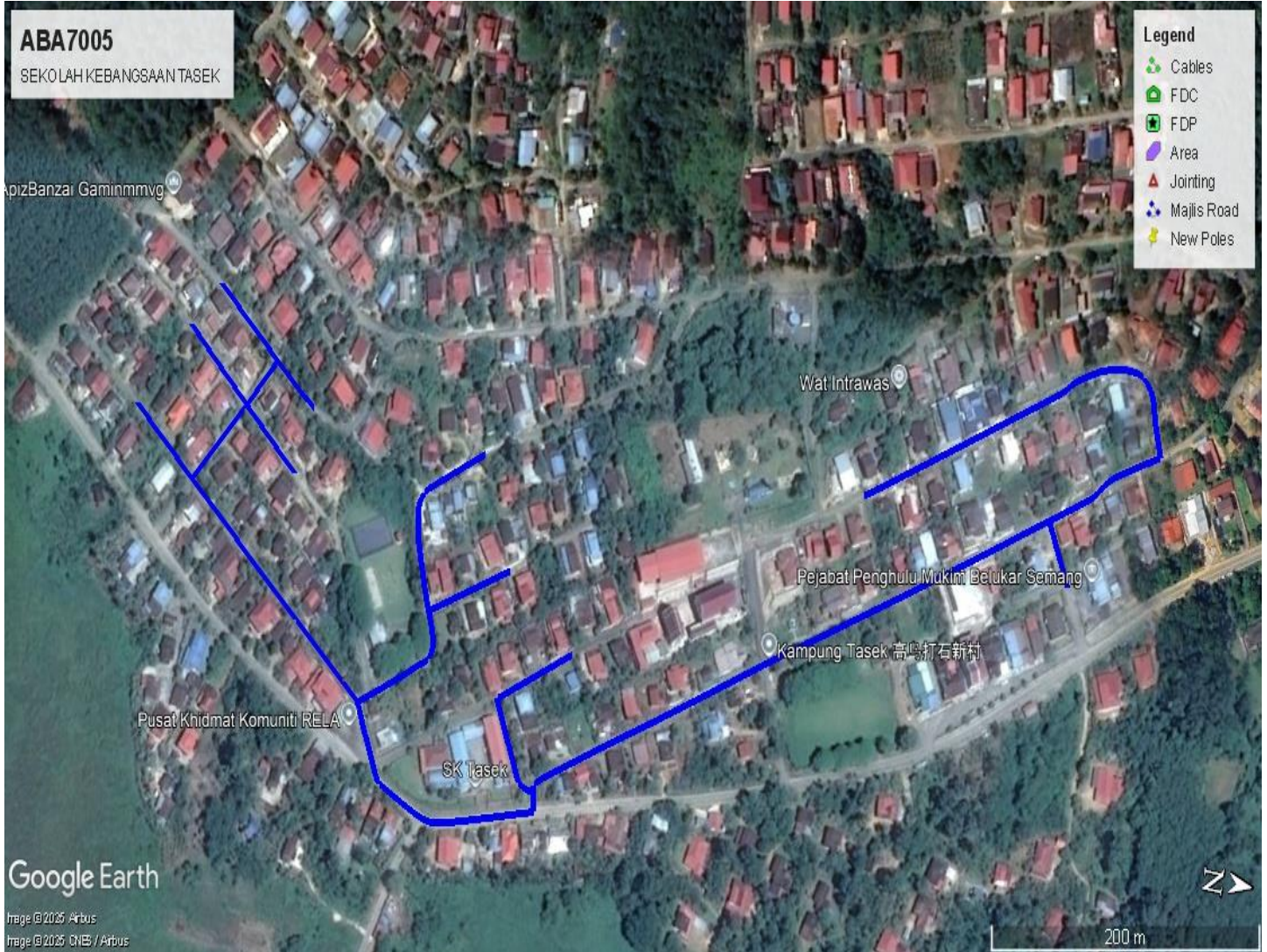
3.1 Overview Site Area



3.2 Site boundry



3.3 Road Boundry

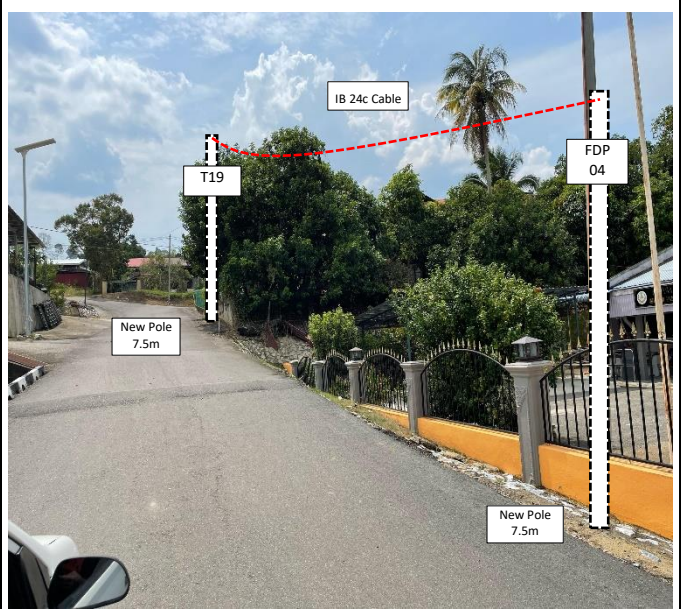
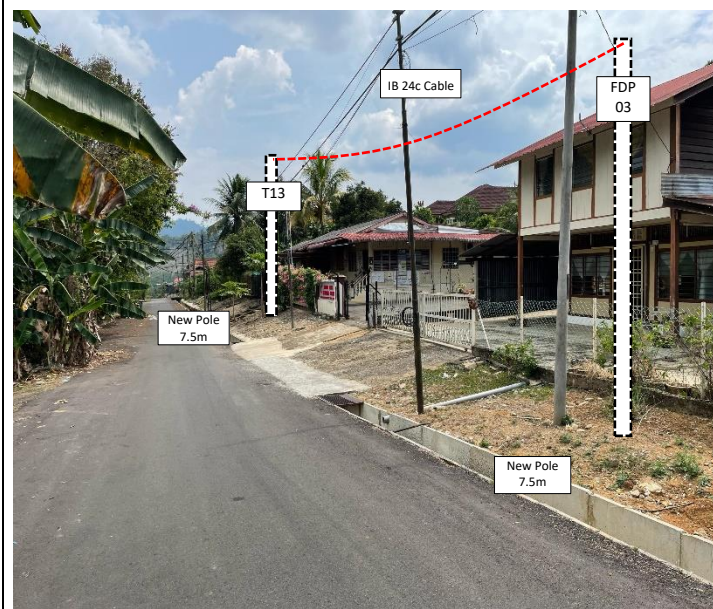
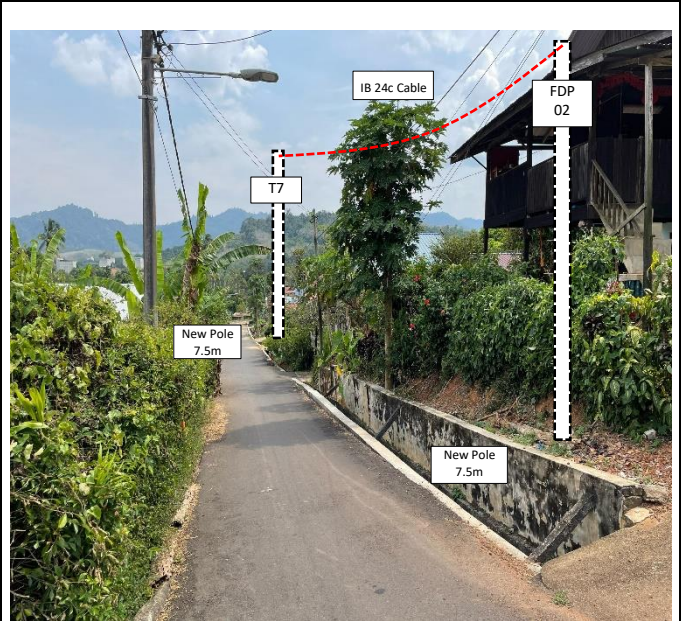
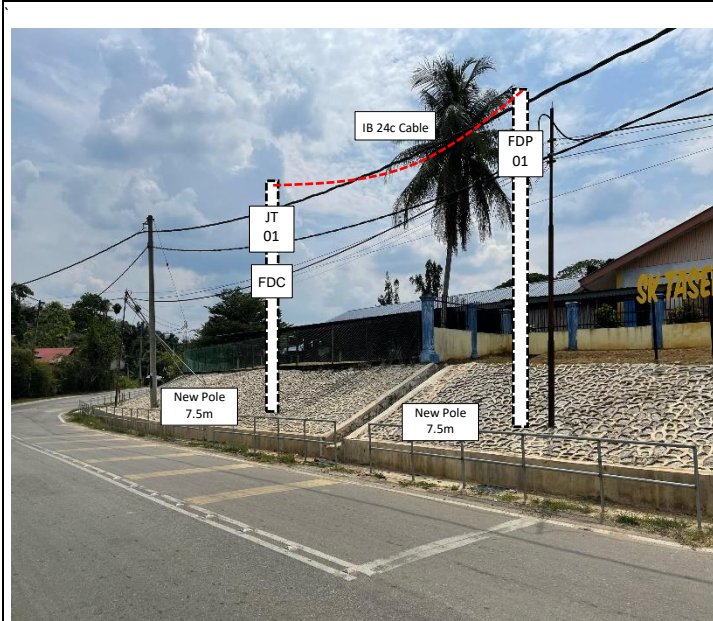


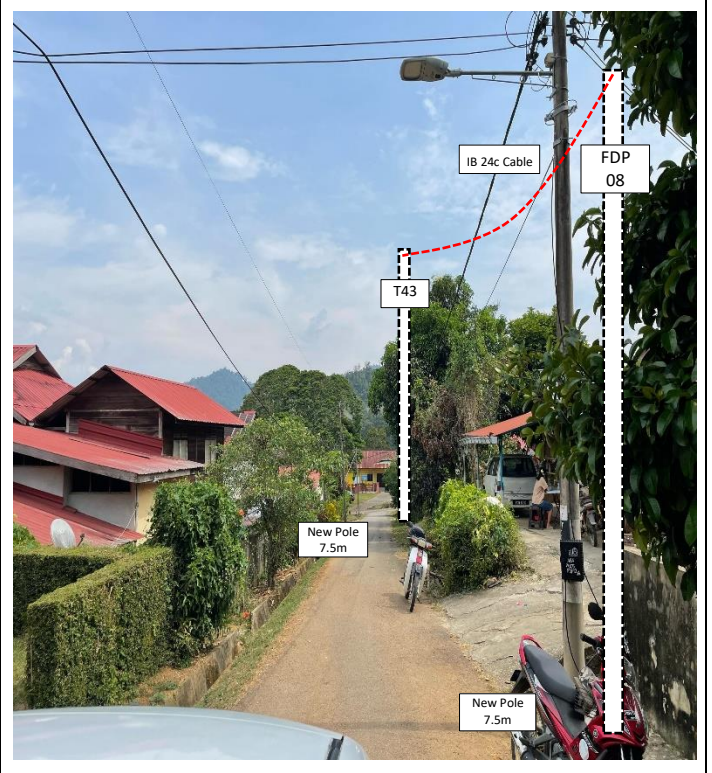
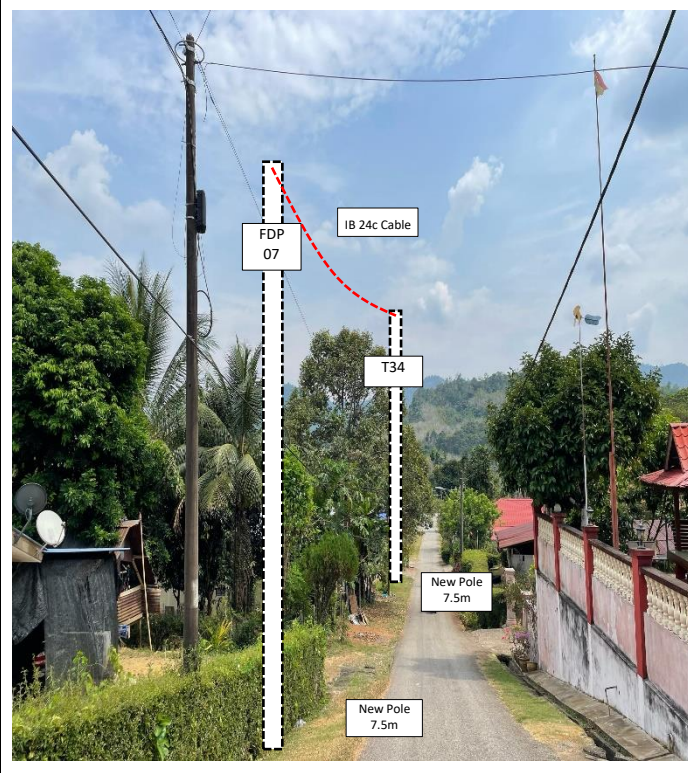
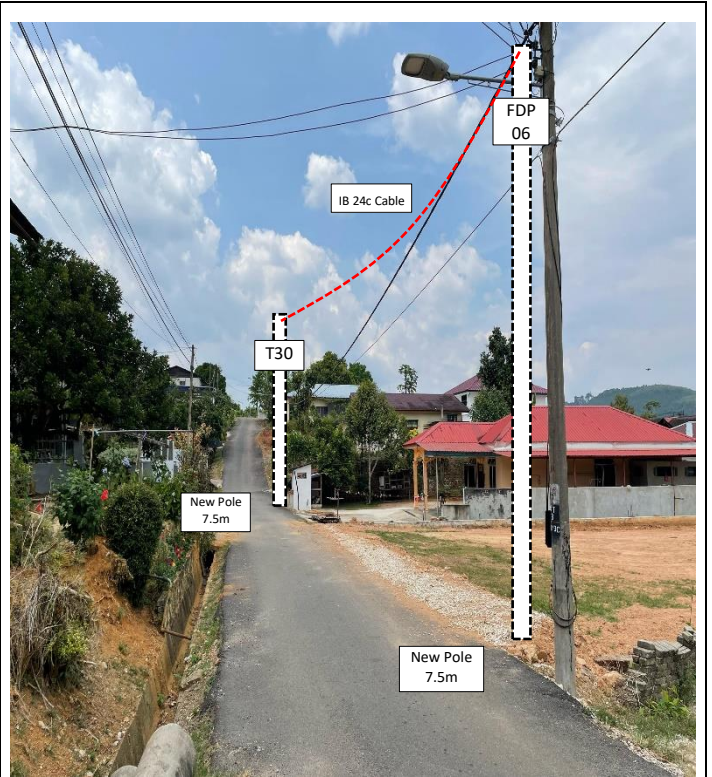
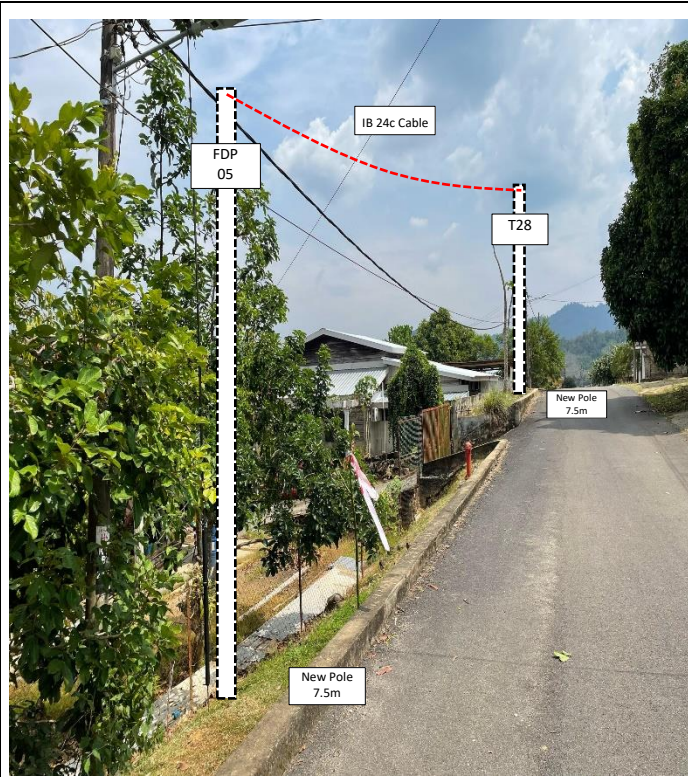
4.0 PROPOSED NEW POLE

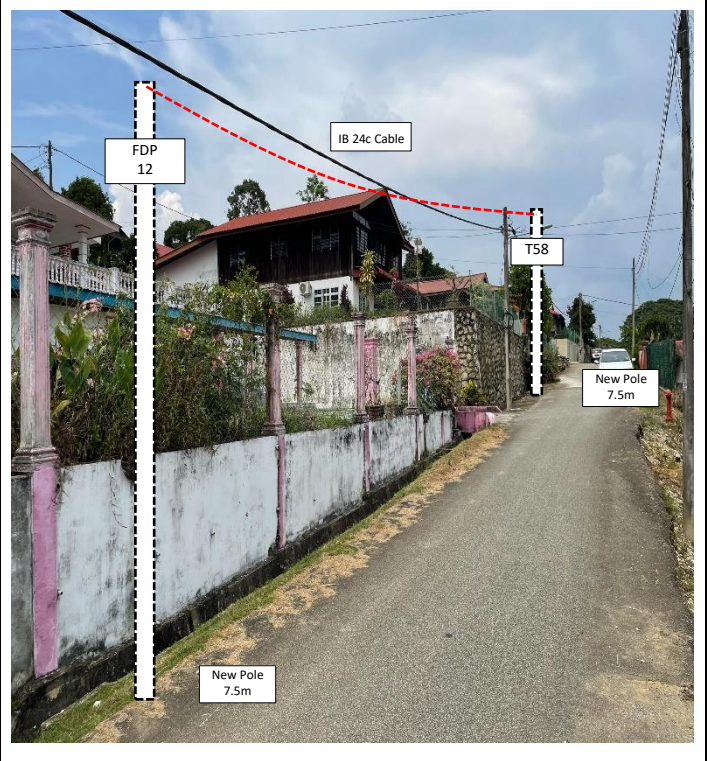
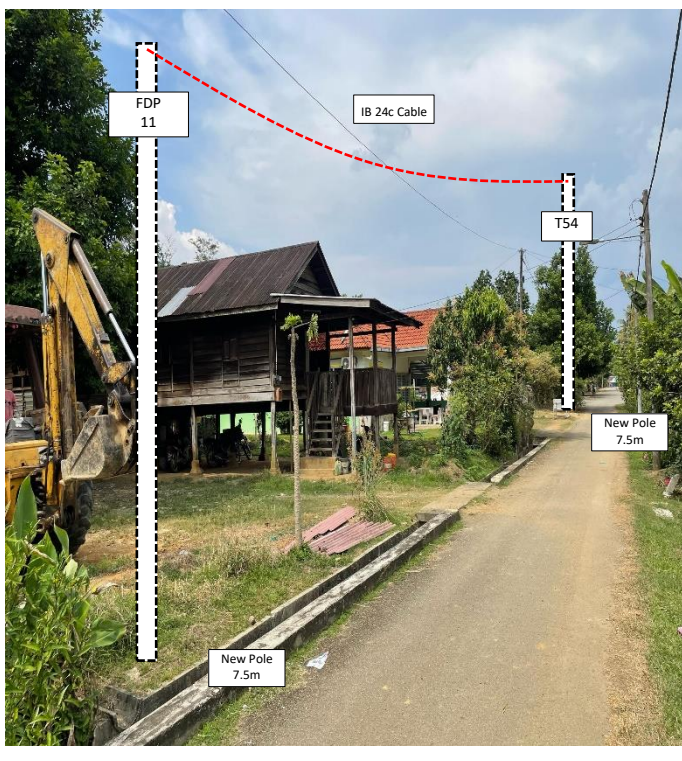
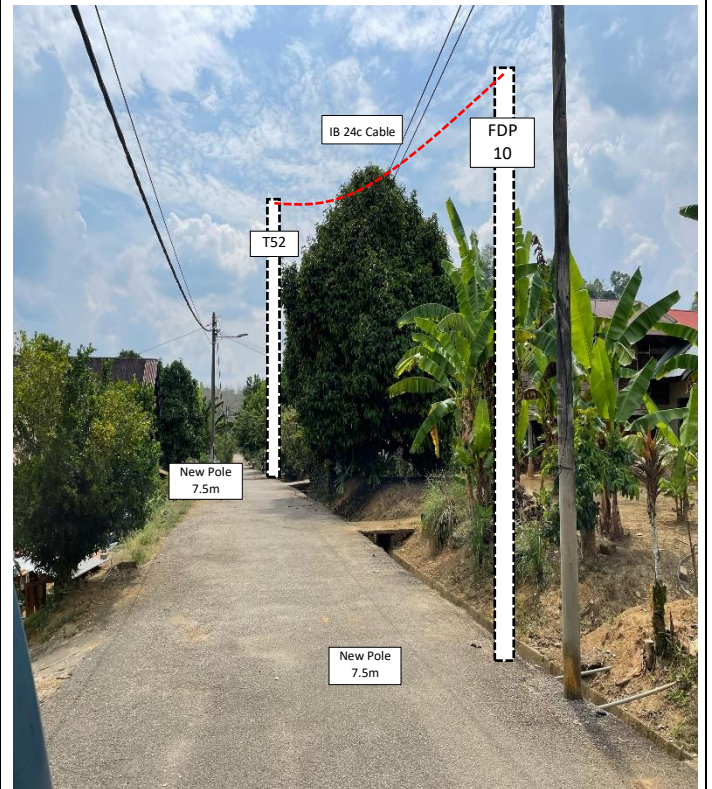
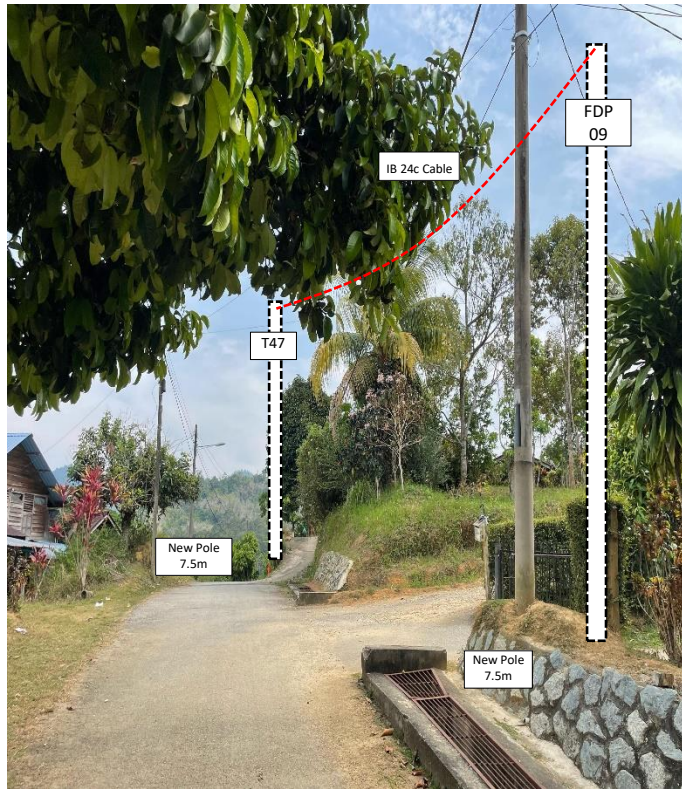
Proposed New Pole Coordinate					
No.	Pole Number	Distance (m)	Latitude	Longitude	Local Authority
1	FDC POLE	10	5.665045	100.974960	Majlis Daerah Pengkalan Hulu
2	T001	14	5.665045	100.974960	Majlis Daerah Pengkalan Hulu
3	T002	23	5.665168	100.974927	Majlis Daerah Pengkalan Hulu
4	T003	18	5.665367	100.974877	Majlis Daerah Pengkalan Hulu
5	T004	14	5.665521	100.974837	Majlis Daerah Pengkalan Hulu
6	T005	35	5.665486	100.974717	Majlis Daerah Pengkalan Hulu
7	T006	28	5.665757	100.974559	Majlis Daerah Pengkalan Hulu
8	T007	35	5.665974	100.974427	Majlis Daerah Pengkalan Hulu
9	T008	31	5.666244	100.974270	Majlis Daerah Pengkalan Hulu
10	T009	34	5.666486	100.974132	Majlis Daerah Pengkalan Hulu
11	T010	32	5.666750	100.973975	Majlis Daerah Pengkalan Hulu
12	T011	35	5.666993	100.973825	Majlis Daerah Pengkalan Hulu
13	T012	36	5.667261	100.973663	Majlis Daerah Pengkalan Hulu
14	T013	35	5.667550	100.973502	Majlis Daerah Pengkalan Hulu
15	T014	30	5.667823	100.973339	Majlis Daerah Pengkalan Hulu
16	T015	30	5.668055	100.973206	Majlis Daerah Pengkalan Hulu
17	T016	39	5.668286	100.973061	Majlis Daerah Pengkalan Hulu
18	T017	29	5.668583	100.972877	Majlis Daerah Pengkalan Hulu
19	T018	22	5.668810	100.972736	Majlis Daerah Pengkalan Hulu
20	T019	23	5.668899	100.972915	Majlis Daerah Pengkalan Hulu
21	T020	34	5.669018	100.973084	Majlis Daerah Pengkalan Hulu
22	T021	21	5.669079	100.972590	Majlis Daerah Pengkalan Hulu
23	T022	31	5.669214	100.972454	Majlis Daerah Pengkalan Hulu
24	T023	38	5.669465	100.972331	Majlis Daerah Pengkalan Hulu
25	T024	31	5.669335	100.972019	Majlis Daerah Pengkalan Hulu
26	T025	29	5.669053	100.971999	Majlis Daerah Pengkalan Hulu
27	T026	27	5.668827	100.972122	Majlis Daerah Pengkalan Hulu
28	T027	32	5.668632	100.972260	Majlis Daerah Pengkalan Hulu
29	T028	38	5.668382	100.972396	Majlis Daerah Pengkalan Hulu
30	T029	32	5.668083	100.972566	Majlis Daerah Pengkalan Hulu
31	T030	37	5.667839	100.972725	Majlis Daerah Pengkalan Hulu
32	T031	23	5.667548	100.972887	Majlis Daerah Pengkalan Hulu
33	T032	27	5.665392	100.974528	Majlis Daerah Pengkalan Hulu
34	T033	25	5.665288	100.974312	Majlis Daerah Pengkalan Hulu
35	T034	34	5.665484	100.974199	Majlis Daerah Pengkalan Hulu
36	T035	19	5.665736	100.974018	Majlis Daerah Pengkalan Hulu
37	T036	34	5.664883	100.974995	Majlis Daerah Pengkalan Hulu
38	T037	24	5.664595	100.974888	Majlis Daerah Pengkalan Hulu
39	T038	35	5.664436	100.974736	Majlis Daerah Pengkalan Hulu

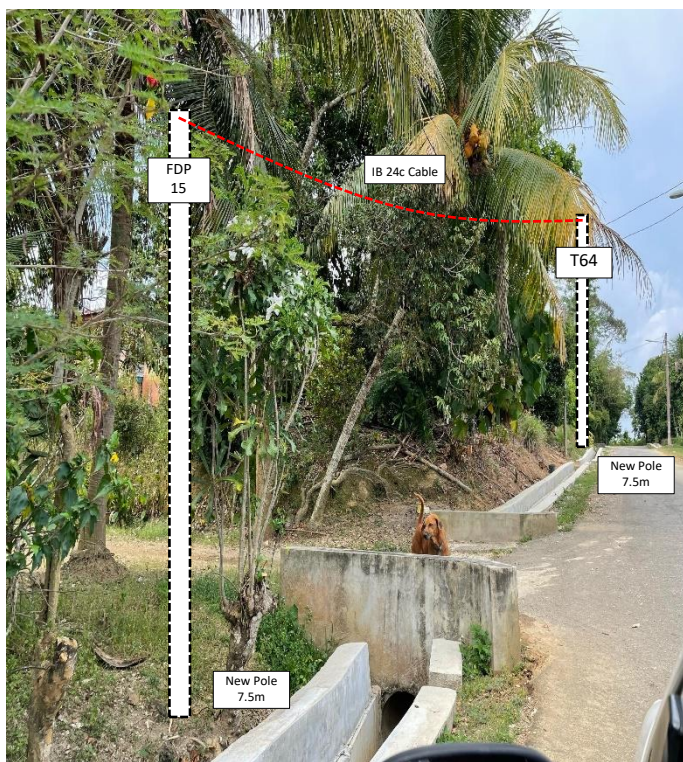
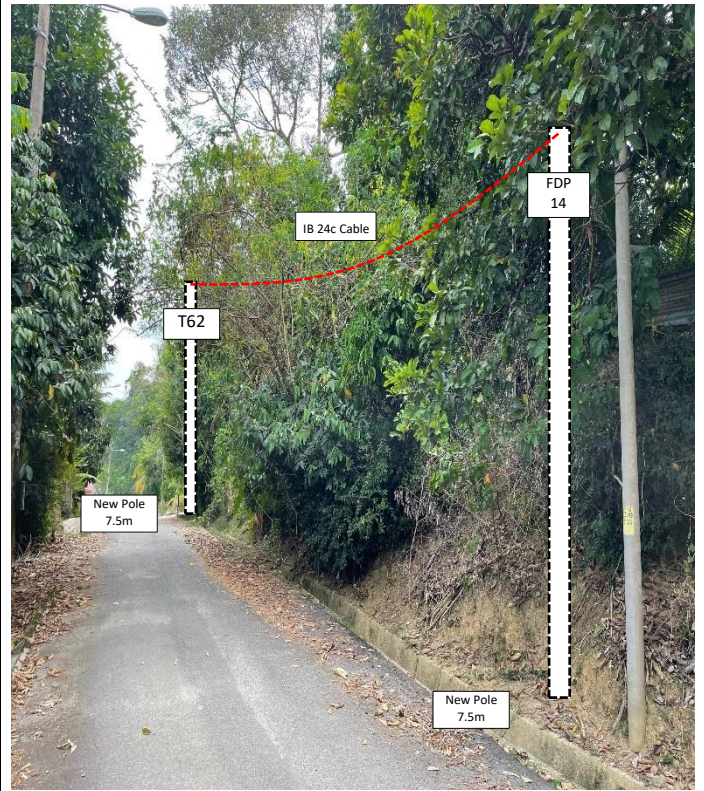
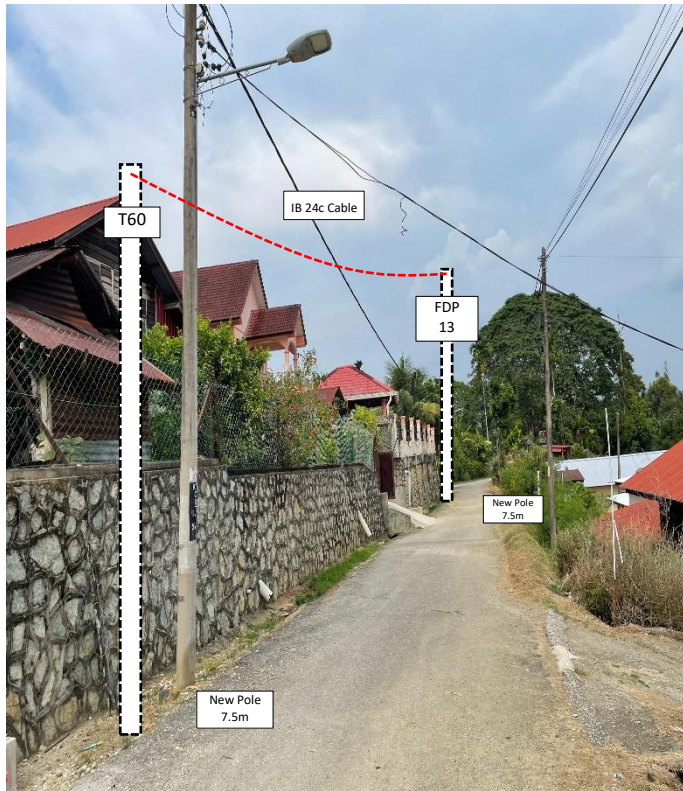
No.	Pole Number	Distance (m)	Latitude	Longitude	Local Authority
40	T039	36	5.664287	100.974456	Majlis Daerah Pengkalan Hulu
41	T040	25	5.664557	100.974281	Majlis Daerah Pengkalan Hulu
42	T041	26	5.664730	100.974140	Majlis Daerah Pengkalan Hulu
43	T042	32	5.664680	100.973910	Majlis Daerah Pengkalan Hulu
44	T043	37	5.664934	100.973776	Majlis Daerah Pengkalan Hulu
45	T044	36	5.665219	100.973612	Majlis Daerah Pengkalan Hulu
46	T045	28	5.664567	100.973607	Majlis Daerah Pengkalan Hulu
47	T046	32	5.664535	100.973353	Majlis Daerah Pengkalan Hulu
48	T047	26	5.664769	100.973181	Majlis Daerah Pengkalan Hulu
49	T048	36	5.664964	100.973047	Majlis Daerah Pengkalan Hulu
50	T049	35	5.664013	100.974279	Majlis Daerah Pengkalan Hulu
51	T050	38	5.663759	100.974089	Majlis Daerah Pengkalan Hulu
52	T051	33	5.663484	100.973880	Majlis Daerah Pengkalan Hulu
53	T052	32	5.663242	100.973715	Majlis Daerah Pengkalan Hulu
54	T053	28	5.663009	100.973541	Majlis Daerah Pengkalan Hulu
55	T054	38	5.662812	100.973389	Majlis Daerah Pengkalan Hulu
56	T055	28	5.662532	100.973188	Majlis Daerah Pengkalan Hulu
57	T056	35	5.663166	100.973343	Majlis Daerah Pengkalan Hulu
58	T057	36	5.663345	100.973080	Majlis Daerah Pengkalan Hulu
59	T058	32	5.663078	100.972902	Majlis Daerah Pengkalan Hulu
60	T059	24	5.662854	100.972727	Majlis Daerah Pengkalan Hulu
61	T060	26	5.663512	100.973222	Majlis Daerah Pengkalan Hulu
62	T061	34	5.663699	100.973367	Majlis Daerah Pengkalan Hulu
63	T062	34	5.663537	100.972837	Majlis Daerah Pengkalan Hulu
64	T063	32	5.663791	100.973017	Majlis Daerah Pengkalan Hulu
65	T064	36	5.663304	100.972666	Majlis Daerah Pengkalan Hulu
66	T065	36	5.663039	100.972485	Majlis Daerah Pengkalan Hulu

5.0 SITE PHOTOS - PROPOSED NEW POLE











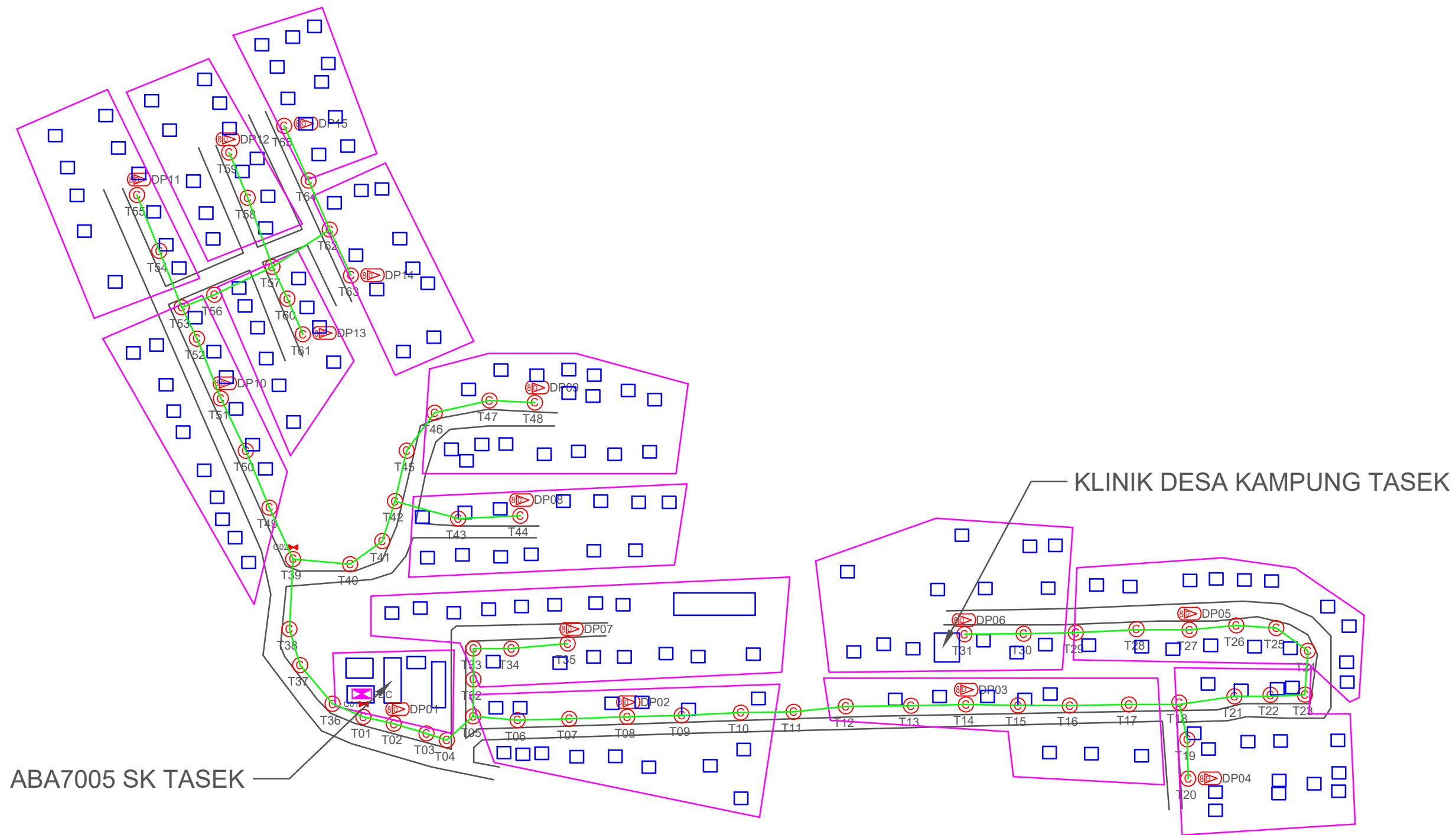
PROJEK PENYEDIAAN DAN PENYELENGGARAAN POINT OF PRESENCE (POP)
FASA 2: HAB INFRASTRUTUK GENTIAN OPTIK BERHAMPIRAN DENGAN
SEKOLAH, KAWASAN PERINDUSTRIAN, PREMIS KERAJAAN DAN KOMUNITI
SEKITARNYA OLEH KEMENTERIAN KOMUNIKASI MALAYSIA – ZON UTARA
(KKMM.400-11/17/132(1))



WABTECH SDN BHD
(1398387-X)

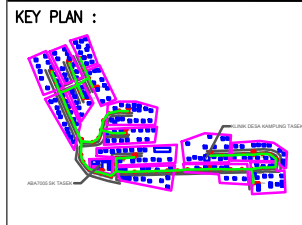
6.0 3rd PARTIES DEPENDENCIES

NO	LOCAL COUNCIL / AUTHORITY	REMARK
1	Majlis Daerah Pengkalan Hulu	1979m
2	JKR Daerah Pengkalan Hulu	-



TOTAL HOME PASSES: 120 UNITS

LEGEND									
	12C FOC		Installed Pole (9m)		New Manhole(JRC7)		Tension Small / Tension Big		MH NO.
	24C FOC		Installed Riser		House Number		Existing Manhole		Existing TNB Pole NO.
	48C FOC		FDP with (1:8) splitter		Existing TNB Pole		Closure NO.		New Pole NO.
	96C FOC		Closure		LOOP		FDP NO.		SEE A-A in this page
	144C FOC		New Manhole (PT)		FDC		FDC NO.		SEE SHEET XXXX
	Installed Pole (7.5M)		Installed Pole (7.5M)		FDP Boundary				



PROJECT OWNER :

MAIN CONTRACTOR

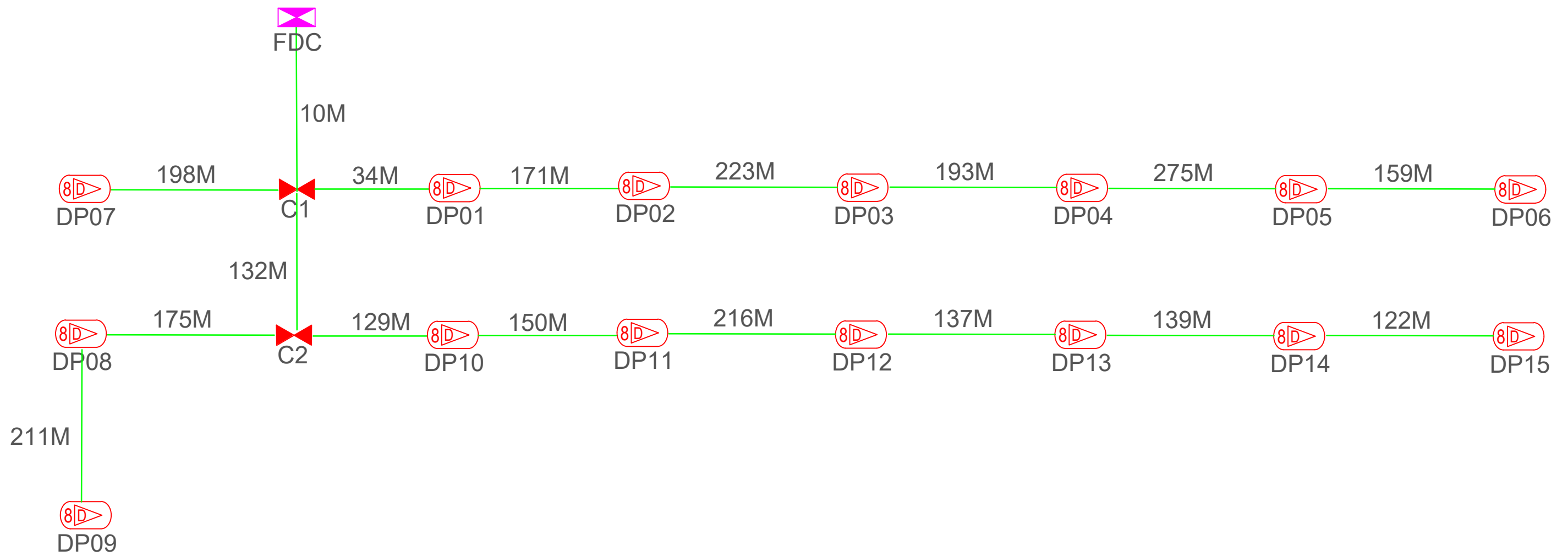
SUB-CONTRACTOR :

PROJECT TITLE:
 CONTRACT FOR THE PROVISION OF SUPPLY, INSTALLATION, AND COMMISSIONING OF FTTX NETWORK INFRASTRUCTURE - POP 2 PROJECT D-SIDE - ABA7005 - SK TASEK

DRAWING TITLE:
ABA7005 SK TASEK

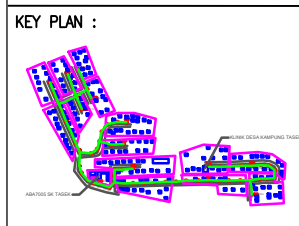
PROJECT PHASE:
PROJECT PHASE

Design By	ENGINEER	Date	DATE
Drawn By	CAD ENGINEER	Scale	NTS
Checked By	ENGINEER	Job Number	JOB/NUMBER
DRAWING NUMBER :		Sheet :	
DRAWING/NUMBER		1/1	
THIS PRINT AND ITS COPYRIGHT ARE THE PROPERTY			
		Size : A3	



TOTAL FOC DISTANCE: 2,674 METERS

LEGEND											
	12C FOC		Installed 1:4 splitter in FDC		Installed Pole (9m)		New Manhole(JRC7)		Tension Small / Tension Big		MH NO.
	24C FOC		FDP with (1:8) splitter		Installed Riser		House Number		Existing Manhole		Existing TNB Pole NO.
	48C FOC		Closure		Suspension Big		Existing TNB Pole		Closure NO.		New Pole NO.
	96C FOC		New Manhole (PT)		Suspension Small		LOOP		FDP NO.		SEE A-A in this page
	144C FOC		Installed Pole (7.5M)		FDC		FDP Boundary		FDC NO.		SEE SHEET XXXX



PROJECT OWNER :

MAIN CONTRACTOR

PRIVASAT

SUB-CONTRACTOR :

PROJECT TITLE:

CONTRACT FOR THE PROVISION OF SUPPLY, INSTALLATION, AND COMMISSIONING OF FTTX NETWORK INFRASTRUCTURE - POP 2 PROJECT D-SIDE - ABA7005 - SK TASEK

DRAWING TITLE:

ABA7005 SK TASEK

PROJECT PHASE:

PROJECT PHASE

Design By	ENGINEER	Date	DATE
Drawn By	CAD ENGINEER	Scale	NTS
Checked By	ENGINEER	Job Number	JOB/NUMBER
DRAWING NUMBER :		Sheet :	
DRAWING/NUMBER		1/1	
THIS PRINT AND ITS COPYRIGHT ARE THE PROPERTY			
Size : A3			