

## TECHNICAL PROPOSAL POP2 ABA7016 SEKOLAH KEBANGSAAN LUAT (D-SIDE)

**Company Name** : WabTech Sdn Bhd  
**Company Address** : 101-1, Jalan Metro Sendayan, 71950, Seremban, Negeri Sembilan.  
**Prepared By** : Mohd Farid bin Othman  
**Date** : 06/12/2024



### Starting Point

**Site / Boundary Name** : Sekolah Kebangsaan Luat  
**Address** : Kampung Luat, 33400 Lenggong, Perak.  
**District** : Lenggong  
**Postcode** : 33400  
**State** : Perak  
**GPS Coordinate** : 5.043360, 100.987533  
**LRD** : A

### End Point

**Site / Boundary Name** : Kampung Luat, Lenggong  
**Address** : Jalan Talong  
**District** : Lenggong  
**Postcode** : 33400  
**State** : Perak  
**GPS Coordinate** : 5.049911, 100.982253  
**LRD** : B



PROJEK PENYEDIAAN DAN PENYELENGGARAAN POINT OF PRESENCE (POP)  
 FASA 2: HAB INFRASTRUTUK GENTIAN OPTIK BERHAMPIRAN DENGAN  
 SEKOLAH, KAWASAN PERINDUSTRIAN, PREMIS KERAJAAN DAN KOMUNITI  
 SEKITARNYA OLEH KEMENTERIAN KOMUNIKASI MALAYSIA – ZON UTARA  
 (KKMM.400-11/17/132(1))



WRBTECH SDN BHD  
 (1396387-X)

## 1.0 WORK SUMMARY

NO	PROPOSED DISTANCE AND METHOD	UNIT	QUANTITY
1	Horizontal Directional Drilling (HDD)	m	0
2	Carriage Way Open Trench (CW)	m	0
3	Grass Verge Open Trenching (GV)	m	0
4	Micro Trenching (MT)	m	0
Total			

NO	OTHER INFORMATION	UNIT	QUANTITY
1	Installation of Short Span ADSS Fibre Cables	m	2327m
2	Install New Pole	ea	73
3	Install New JRC7 Manhole	ea	0
4	Install GI Riser 100mm	ea	0
5	Install Fiber Distribution Point and Closure (Splicing, Termination and Testing)	ea	17
6	Estimated Time Required for Completion	days	30



PROJEK PENYEDIAAN DAN PENYELENGGARAAN POINT OF PRESENCE (POP)  
FASA 2: HAB INFRASTRUTUK GENTIAN OPTIK BERHAMPIRAN DENGAN  
SEKOLAH, KAWASAN PERINDUSTRIAN, PREMIS KERAJAAN DAN KOMUNITI  
SEKITARNYA OLEH KEMENTERIAN KOMUNIKASI MALAYSIA – ZON UTARA  
(KKMM.400-11/17/132(1))



WRBTECH SDN BHD  
(1396387-X)

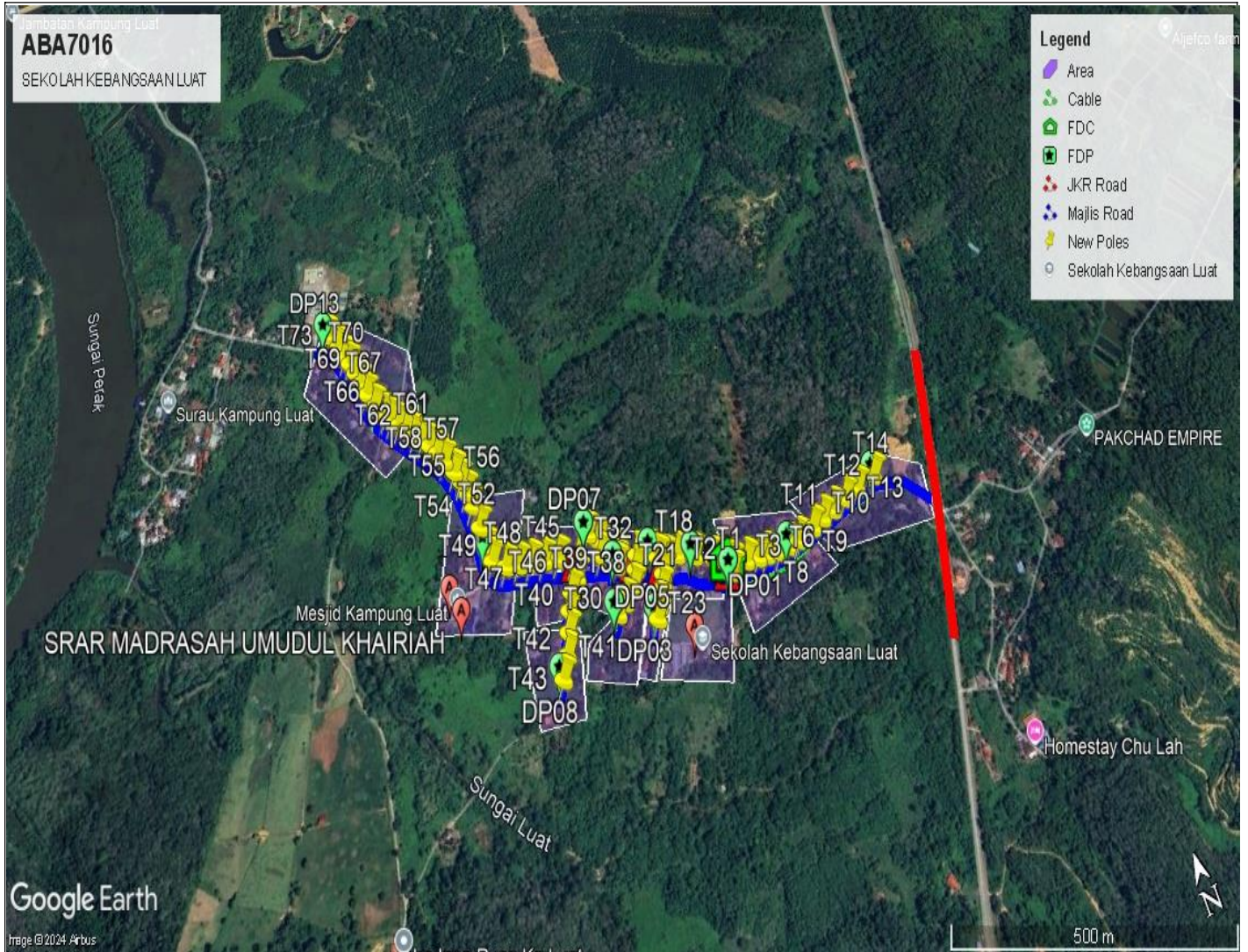
## 2.0 LOCAL AUTHORITY SUMMARY

Daerah Lenggong

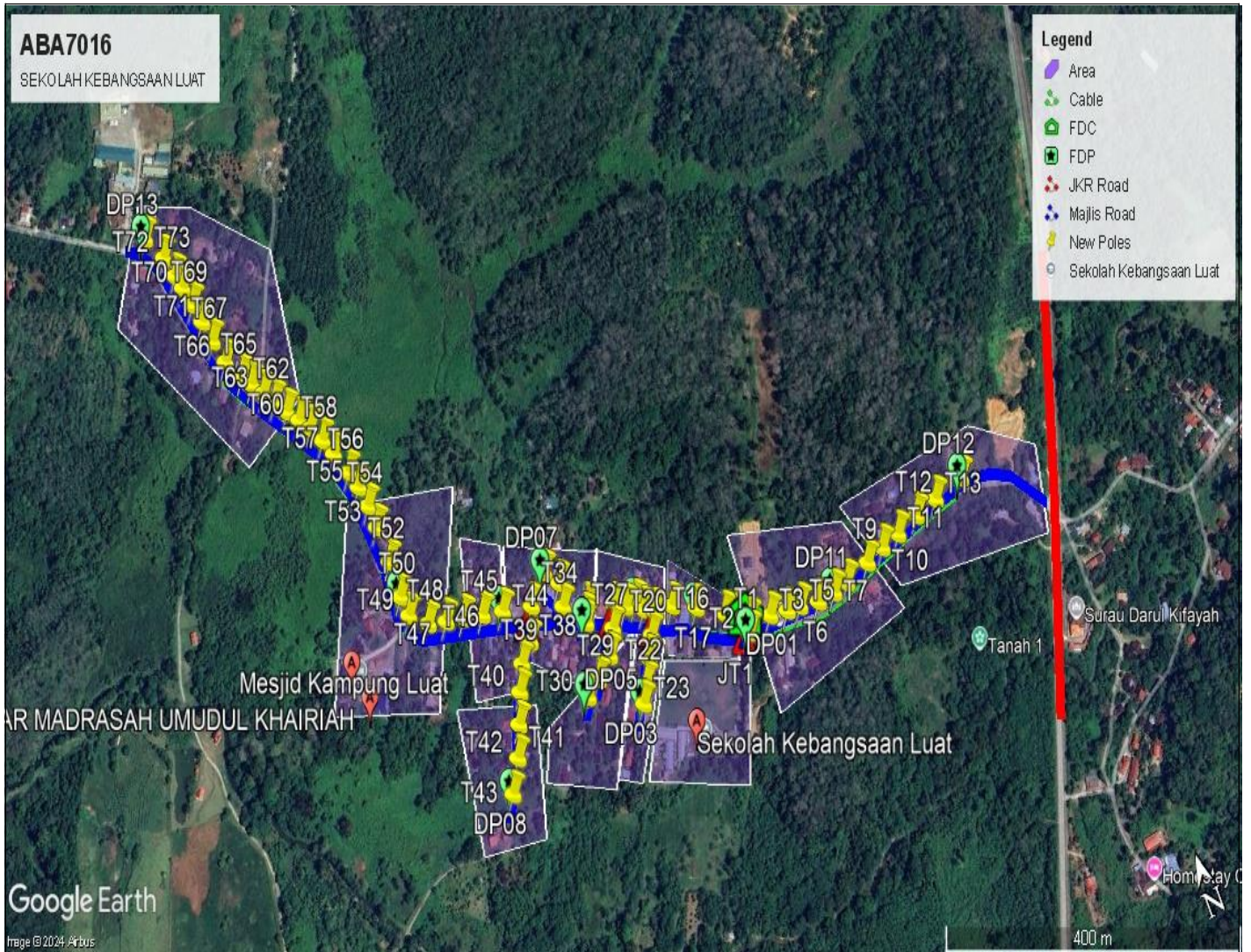
NO	ITEMS	Owner	Quantity	Distance (m)
1	HDD	JKR	-	-
		Majlis	-	-
		PDT	-	-
2	New Pole	JKR	-	-
		Majlis	73	2327
		PDT	-	-
<b>Total Distance (m)</b>				<b>2327</b>

### 3.0 SITE PLAN (KMZ)

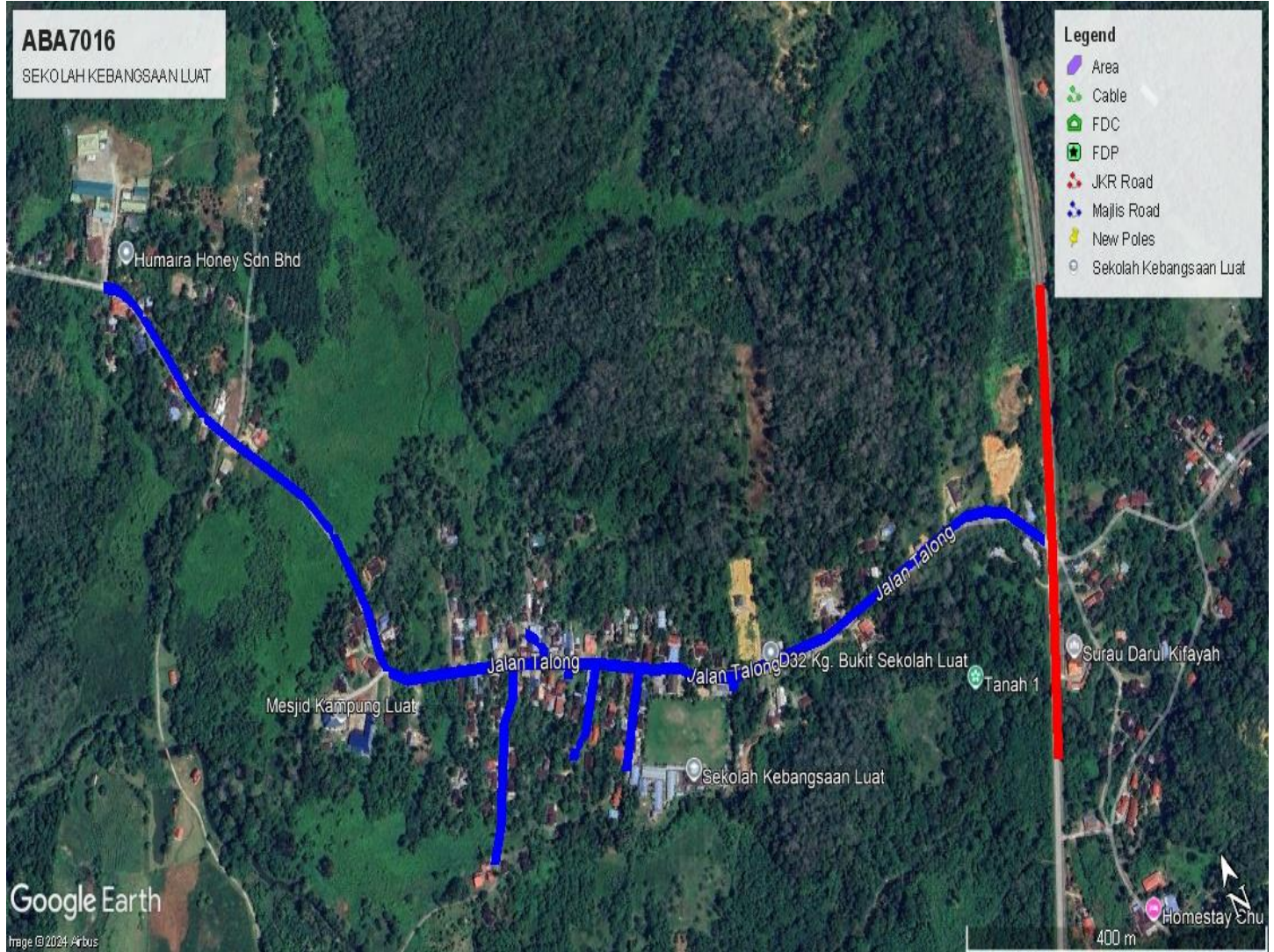
#### 3.1 Overview Site Area



### 3.2 Site boundry



### 3.3 Road Boundry

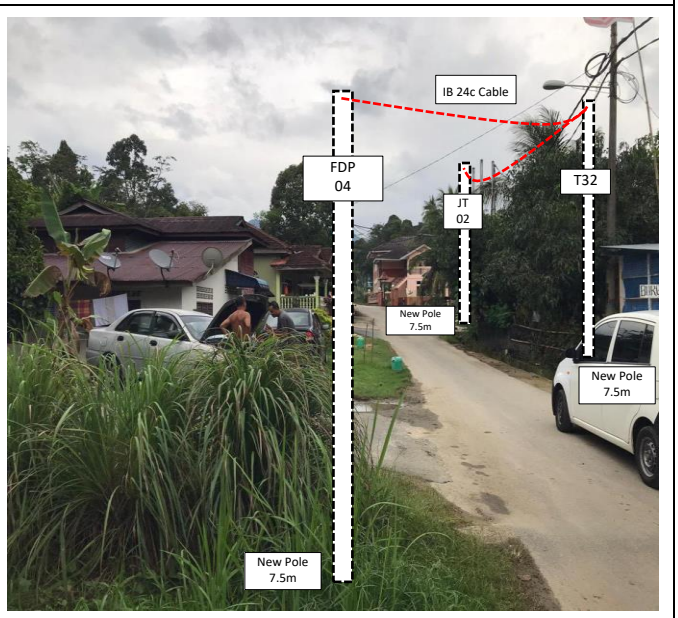
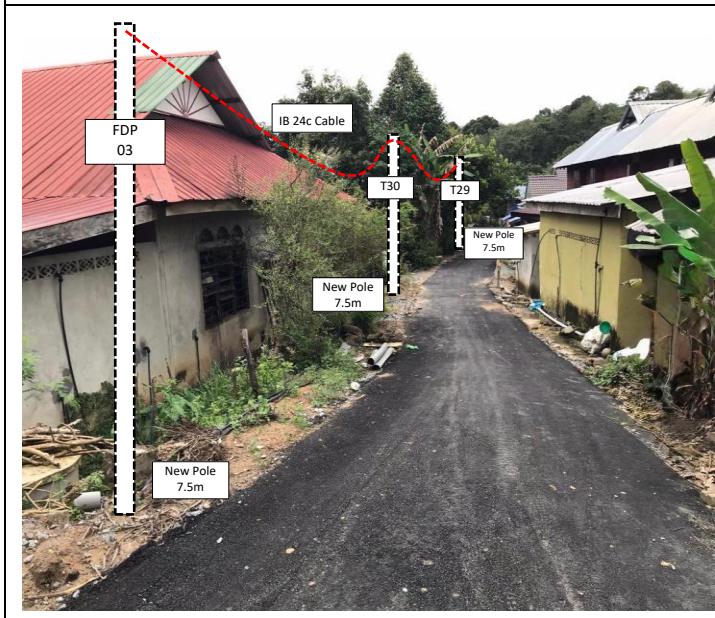
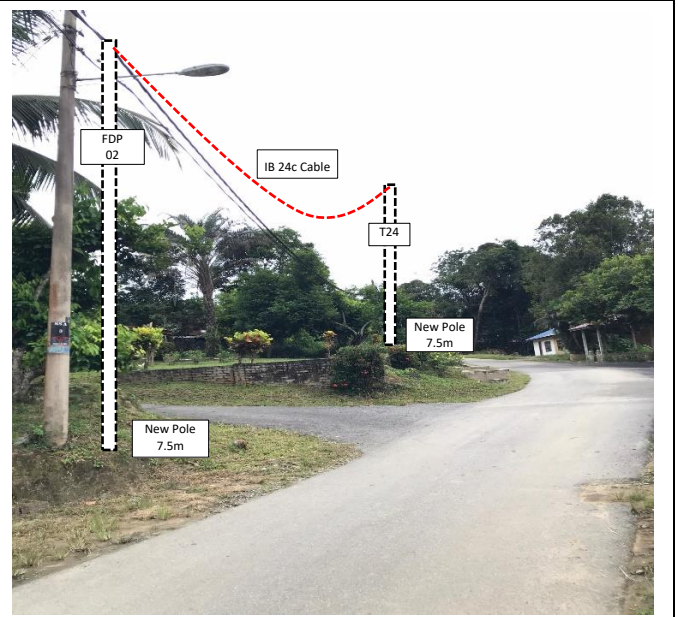
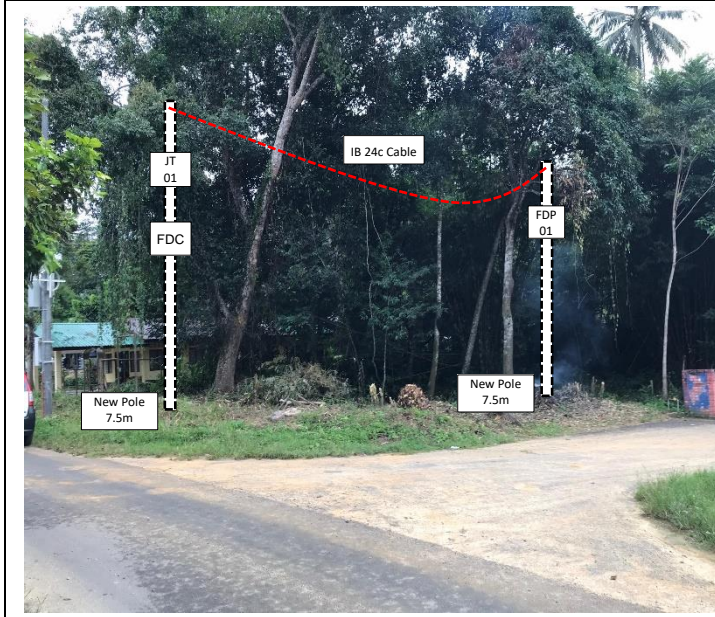


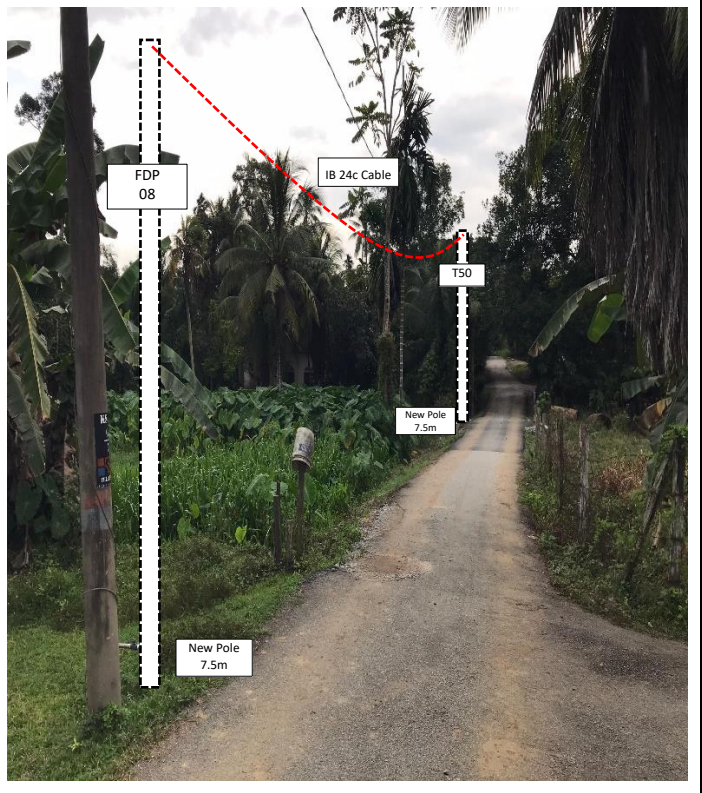
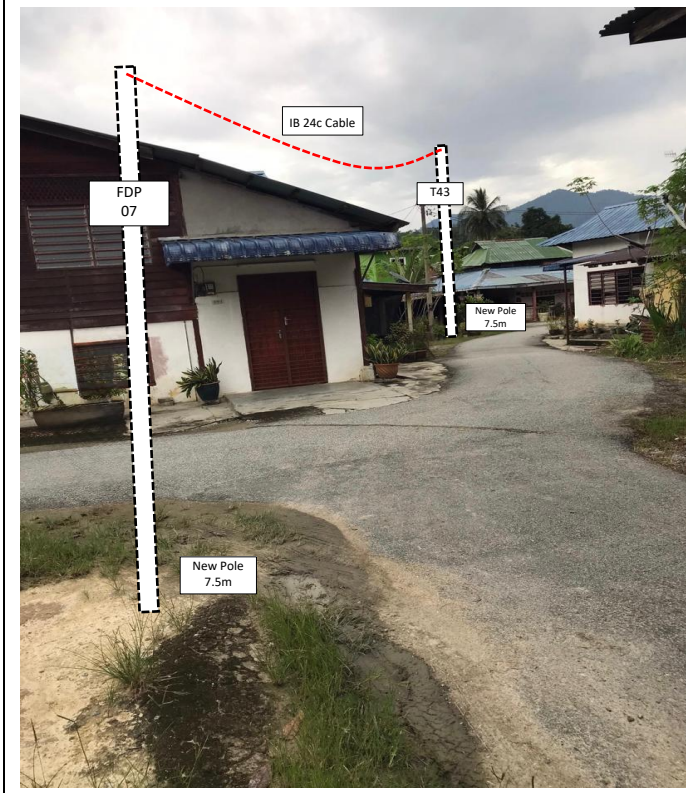
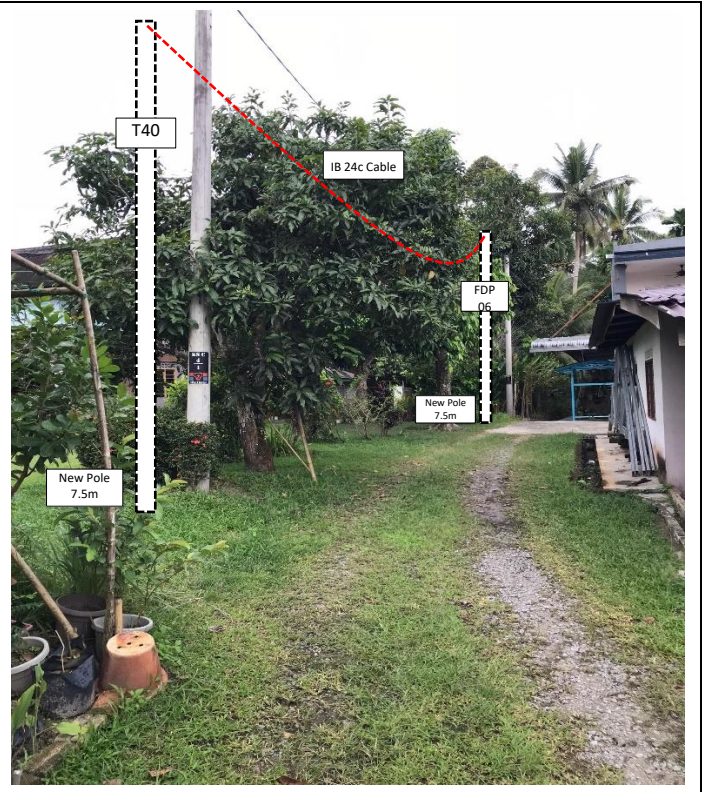
#### 4.0 PROPOSED NEW POLE

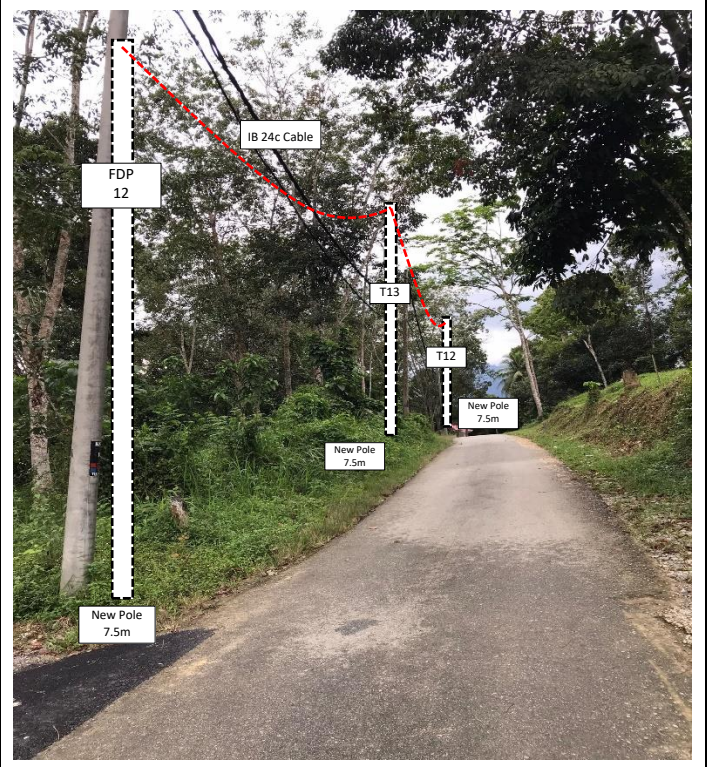
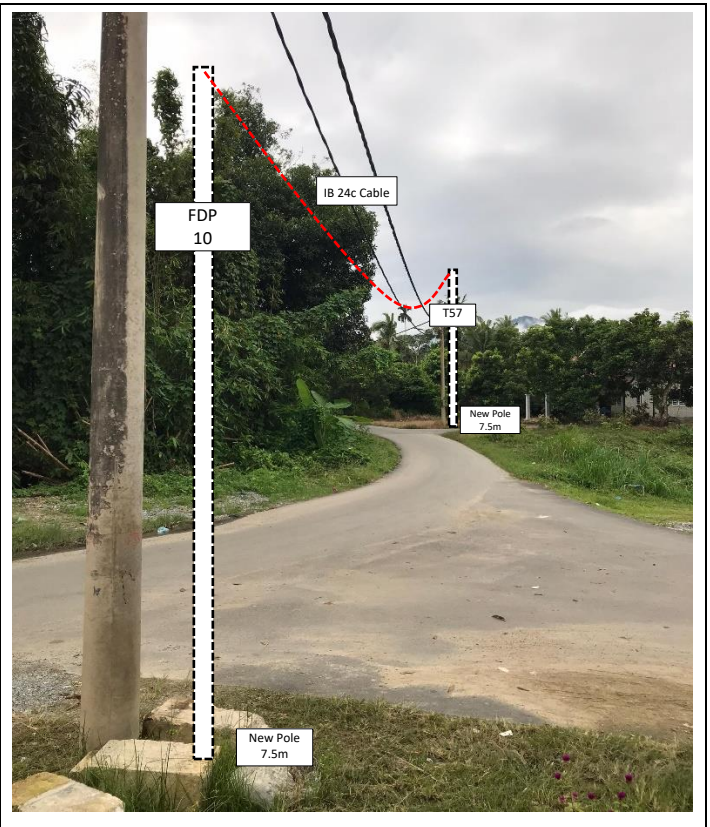
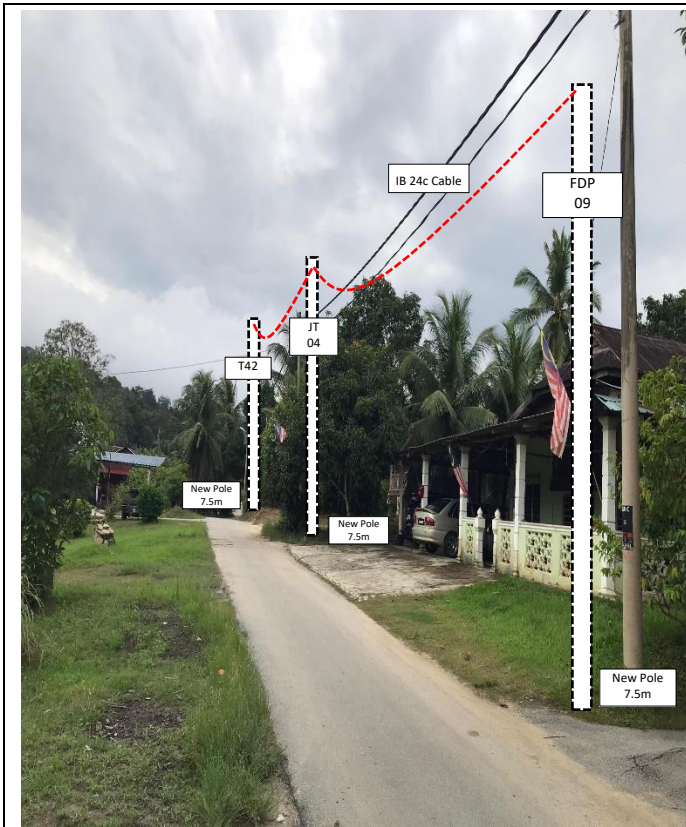
Proposed New Pole Coordinate					
No.	Pole Number	Distance (m)	Latitude	Longitude	Local Authority
1	FDC POLE	13	5.043466	100.987585	Majlis Daerah Lenggong
2	T001	13	5.043360	100.987533	Majlis Daerah Lenggong
3	T002	29	5.043461	100.987581	Majlis Daerah Lenggong
4	T003	25	5.043390	100.987831	Majlis Daerah Lenggong
5	T004	19	5.043336	100.988045	Majlis Daerah Lenggong
6	T005	26	5.043305	100.988205	Majlis Daerah Lenggong
7	T006	24	5.043242	100.988430	Majlis Daerah Lenggong
8	T007	21	5.043232	100.988639	Majlis Daerah Lenggong
9	T008	36	5.043244	100.988825	Majlis Daerah Lenggong
10	T009	27	5.043298	100.989137	Majlis Daerah Lenggong
11	T010	27	5.043341	100.989366	Majlis Daerah Lenggong
12	T011	33	5.043369	100.989599	Majlis Daerah Lenggong
13	T012	32	5.043421	100.989882	Majlis Daerah Lenggong
14	T013	42	5.043453	100.990163	Majlis Daerah Lenggong
15	T014	26	5.043491	100.990534	Majlis Daerah Lenggong
16	T015	17	5.043573	100.987458	Majlis Daerah Lenggong
17	T016	40	5.043643	100.987327	Majlis Daerah Lenggong
18	T017	34	5.043848	100.987035	Majlis Daerah Lenggong
19	T018	25	5.043994	100.986769	Majlis Daerah Lenggong
20	T019	25	5.044037	100.986556	Majlis Daerah Lenggong
21	T020	26	5.043863	100.986426	Majlis Daerah Lenggong
22	T021	26	5.043684	100.986305	Majlis Daerah Lenggong
23	T022	21	5.043494	100.986173	Majlis Daerah Lenggong
24	T023	16	5.043341	100.986066	Majlis Daerah Lenggong
25	T024	13	5.044112	100.986437	Majlis Daerah Lenggong
26	T025	16	5.044234	100.986246	Majlis Daerah Lenggong
27	T026	17	5.044306	100.986121	Majlis Daerah Lenggong
28	T027	23	5.044126	100.986019	Majlis Daerah Lenggong
29	T028	29	5.043916	100.985874	Majlis Daerah Lenggong
30	T029	29	5.043784	100.985657	Majlis Daerah Lenggong
31	T030	24	5.043693	100.985474	Majlis Daerah Lenggong
32	T031	38	5.044447	100.985818	Majlis Daerah Lenggong
33	T032	11	5.044370	100.985758	Majlis Daerah Lenggong
34	T033	7	5.044313	100.985738	Majlis Daerah Lenggong
35	T034	34	5.044570	100.985544	Majlis Daerah Lenggong
36	T035	25	5.044782	100.985594	Majlis Daerah Lenggong
37	T036	24	5.044951	100.985464	Majlis Daerah Lenggong
38	T037	44	5.044743	100.985193	Majlis Daerah Lenggong
39	T038	37	5.044458	100.985041	Majlis Daerah Lenggong

No.	Pole Number	Distance (m)	Latitude	Longitude	Local Authority
40	T039	26	5.044320	100.984863	Majlis Daerah Lenggong
41	T040	30	5.044100	100.984730	Majlis Daerah Lenggong
42	T041	33	5.043839	100.984595	Majlis Daerah Lenggong
43	T042	35	5.043570	100.984453	Majlis Daerah Lenggong
44	T043	38	5.043303	100.984259	Majlis Daerah Lenggong
45	T044	41	5.044854	100.984851	Majlis Daerah Lenggong
46	T045	29	5.044935	100.984609	Majlis Daerah Lenggong
47	T046	27	5.045010	100.984389	Majlis Daerah Lenggong
48	T047	25	5.045074	100.984179	Majlis Daerah Lenggong
49	T048	25	5.045150	100.983967	Majlis Daerah Lenggong
50	T049	28	5.045321	100.983783	Majlis Daerah Lenggong
51	T050	39	5.045522	100.983757	Majlis Daerah Lenggong
52	T051	16	5.044210	100.986376	Majlis Daerah Lenggong
53	T052	39	5.045871	100.983771	Majlis Daerah Lenggong
54	T053	25	5.046225	100.983761	Majlis Daerah Lenggong
55	T054	23	5.046449	100.983744	Majlis Daerah Lenggong
56	T055	21	5.046658	100.983712	Majlis Daerah Lenggong
57	T056	28	5.046834	100.983659	Majlis Daerah Lenggong
58	T057	21	5.047068	100.983561	Majlis Daerah Lenggong
59	T058	21	5.047243	100.983485	Majlis Daerah Lenggong
60	T059	18	5.047411	100.983396	Majlis Daerah Lenggong
61	T060	19	5.047540	100.983301	Majlis Daerah Lenggong
62	T061	20	5.047676	100.983196	Majlis Daerah Lenggong
63	T062	18	5.047825	100.983094	Majlis Daerah Lenggong
64	T063	19	5.047958	100.983001	Majlis Daerah Lenggong
65	T064	16	5.048094	100.982904	Majlis Daerah Lenggong
66	T065	28	5.048211	100.982821	Majlis Daerah Lenggong
67	T066	28	5.048428	100.982693	Majlis Daerah Lenggong
68	T067	25	5.048673	100.982625	Majlis Daerah Lenggong
69	T068	22	5.048895	100.982582	Majlis Daerah Lenggong
70	T069	22	5.049091	100.982538	Majlis Daerah Lenggong
71	T070	17	5.049287	100.982491	Majlis Daerah Lenggong
72	T071	25	5.049432	100.982449	Majlis Daerah Lenggong
73	T072	33	5.049649	100.982394	Majlis Daerah Lenggong
74	T073	33	5.049912	100.982253	Majlis Daerah Lenggong

**5.0 SITE PHOTOS - PROPOSED NEW POLE**











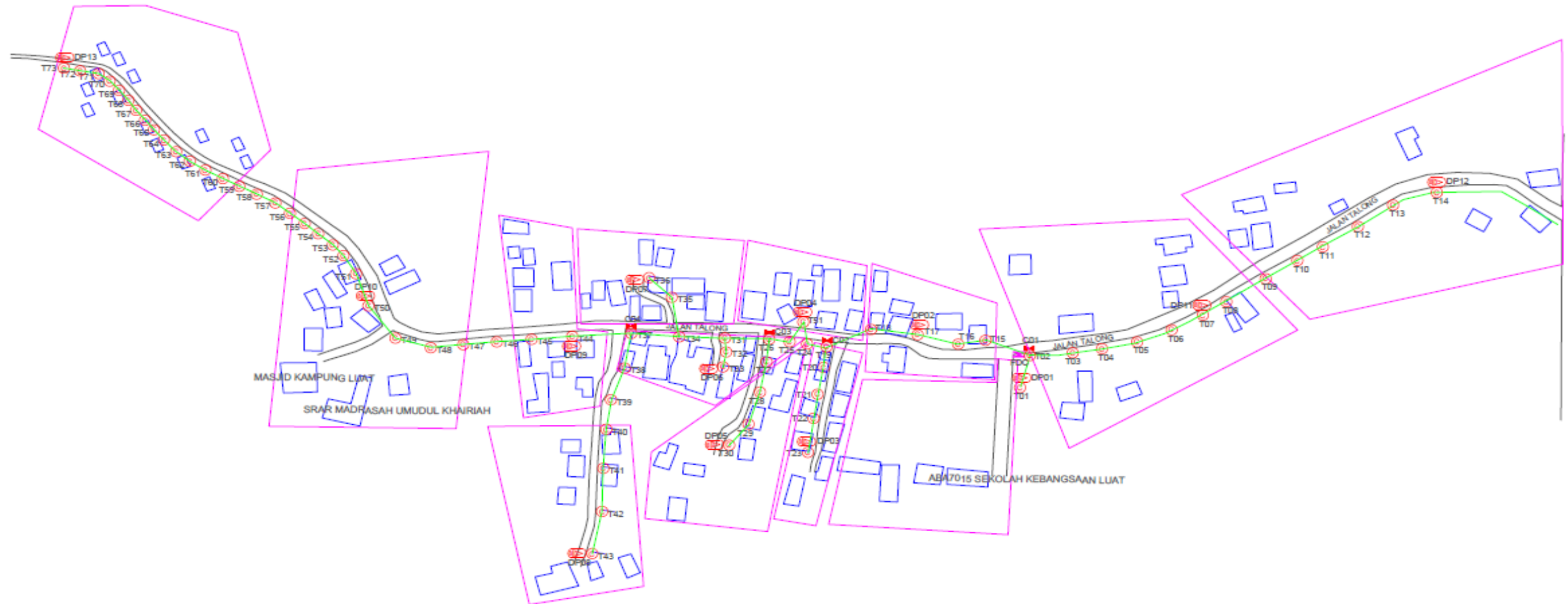
PROJEK PENYEDIAAN DAN PENYELENGGARAAN POINT OF PRESENCE (POP)  
FASA 2: HAB INFRASTRUTUK GENTIAN OPTIK BERHAMPIRAN DENGAN  
SEKOLAH, KAWASAN PERINDUSTRIAN, PREMIS KERAJAAN DAN KOMUNITI  
SEKITARNYA OLEH KEMENTERIAN KOMUNIKASI MALAYSIA – ZON UTARA  
(KKMM.400-11/17/132(1))



WABTECH SDN BHD  
11398387-XL

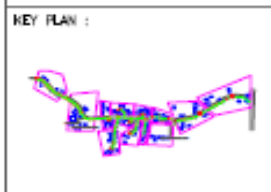
## 6.0 3<sup>rd</sup> PARTIES DEPENDENCIES

NO	LOCAL COUNCIL / AUTHORITY	REMARK
1	Majlis Daerah Lenggong	2327m
2	JKR Daerah Lenggong	-



**TOTAL HOME PASSES: 104 UNITS**

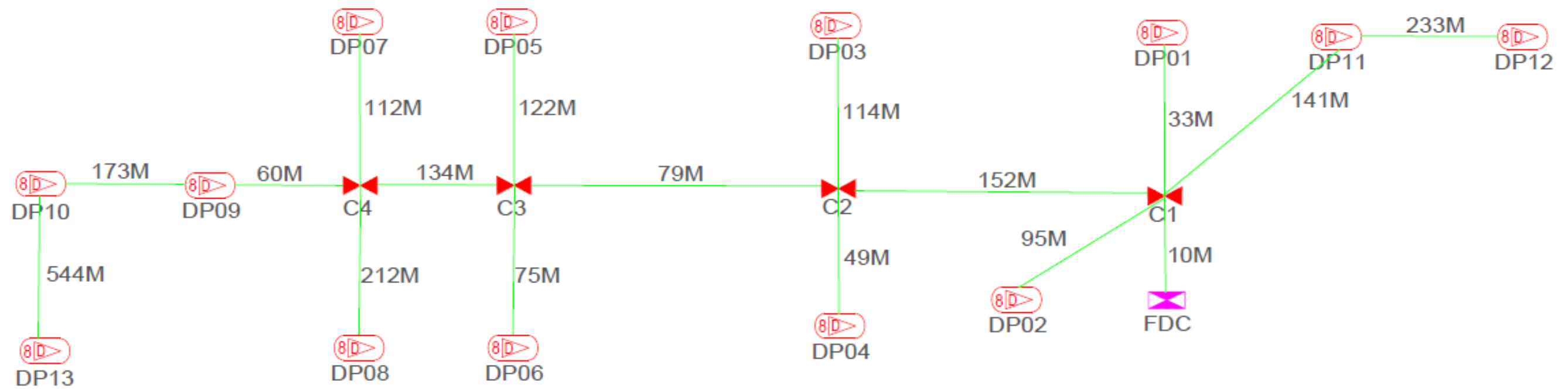
LEGEND									
12C FDP	Installed 1:4 splitter in FDP	Installed Pole (9m)	New Manhole(RC7)	Tension Small / Tension Big	WH	WH NO.			
24C FDP	FDP with (1:8) splitter	Installed Ribber	House Number	Existing Manhole	TKS-1	Existing TNS Pole NO.			
48C FDP	Closure	Suppression Big	Existing TNS Pole	COT	Closure NO.	POI	New Pole NO.		
96C FDP	New Manhole (PII)	Suppression Small	LOOP	FDP1	FDP NO.		(A SEE SHEET XXX - A)		
144C FDP	Installed Pole (7.5M)	FDP	FDP Boundary	FDP2	FDP NO.		(A SEE SHEET XXX - A)		



PROJECT TITLE  
 CONTRACT FOR THE PROVISION OF SUPPLY, INSTALLATION, AND COMMISSIONING OF FTTH NETWORK INFRASTRUCTURE - POP 2 PROJECT D-SIDE - ABA7016 - SK LUAT

DRAWING TITLE  
**ABA7016 SK LUAT**  
 PROJECT PHASE  
**PROJECT PHASE**

Design By: ENGINEER Date: DATE  
 Drawn By: CAD ENGINEER Scale: NTS  
 Checked By: ENGINEER Job Number: JOB/NUMBER  
 DRAWING NUMBER: DRAWING/NUMBER Sheet: 1/1  
 THIS PRINT AND ITS COPYRIGHT ARE THE PROPERTY Size: A3



TOTAL FOC DISTANCE: 2,327 METERS

LEGEND									
	12C FDC		Installed Pole (9m)		New Manhole (R/C7)		Tension Small / Tension Big		WH NO.
	24C FDC		Installed Pole		House Number		Existing Manhole		TRIS-1 Existing TNS Pole NO.
	48C FDC		Clearance		Existing TNS Pole		Clearance NO.		POOT New Pole NO.
	96C FDC		New Manhole (P/D)		LOOP		FDP1 FDP NO.		(A-SEE A&B HOUSE A)
	144C FDC		Installed Pole (7.5M)		FDC		FDC NO.		(A-SEE SHEET XXX A)

<b>KEY PLAN :</b> 	<b>PROJECT OWNER :</b> 	<b>MAIN CONTRACTOR :</b>  <b>PRIVASAT</b>	<b>SUB-CONTRACTOR :</b> 	<b>PROJECT TITLE :</b> CONTRACT FOR THE PROVISION OF SUPPLY, INSTALLATION, AND COMMISSIONING OF FTTX NETWORK INFRASTRUCTURE - POP 2 PROJECT D-SIDE - ABA7016 - SK LUAT	<b>DRAWING TITLE :</b> <b>ABA7016 SK LUAT</b>	Design By: ENGINEER Date: DATE
					<b>PROJECT PHASE :</b> PROJECT PHASE	Drawn By: CAD ENGINEER Scale: NTS Checked By: ENGINEER Job Number: JOB/NUMBER
					<b>DRAWING NUMBER :</b> DRAWING/NUMBER	Sheet : 1/1 Size : A3
THIS PRINT AND ITS COPYRIGHT ARE THE PROPERTY						