

TECHNICAL PROPOSAL

POP2 AFT3004 SEKOLAH MENENGAH AGAMA AL FALAH (D-SIDE)

Company Name	: SEGALA DELIMA (M) SDN BHD
Company Address	: No. 8, Jalan Ampang Baru 6B, Pusat Perdagangan Baru, 31350 Ipoh, Perak
Prepared By	: Nasrohaizan Bin Mustaffa
Date	: 28/1/2025



Point A



Point B

Starting Point

Site / Boundary Name	: SEKOLAH MENENGAH AGAMA AL FALAH
District	: TANJUNG PIANDANG
Postcode	: 34250
State	: PERAK
GPS Coordinate	: 5.090562 , 100.431156
LRD	: A

End Point

Site / Boundary Name	: KAMPUNG TITI SERONG
Address	: TANJUNG PIANDANG
District	: TANJUNG PIANDANG
Postcode	: 34250
State	: PERAK
GPS Coordinate	: 5.086223 , 100.442429
LRD	: B

1.0 WORK SUMMARY

NO	PROPOSED DISTANCE AND METHOD	UNIT	QUANTITY
1	Horizontal Directional Drilling (HDD)	m	65
2	Carriage Way Open Trench(CW)	m	0
3	Grass Verge Open Trenching (GV)	m	0
4	Micro Trenching (MT)	m	0
Total			0

NO	OTHER INFORMATION	UNIT	QUANTITY
1	Installation of Short Span ADSS Fiber Cables	m	2230
2	Install New Pole	ea	70
3	Install New JRC7 Manhole	ea	0
4	Install GI Riser 100mm	ea	0
5	Install Fiber Distribution Point and Closure (Splicing, Termination and Testing)	ea	13
6	Estimated Time Required for Completion	days	30

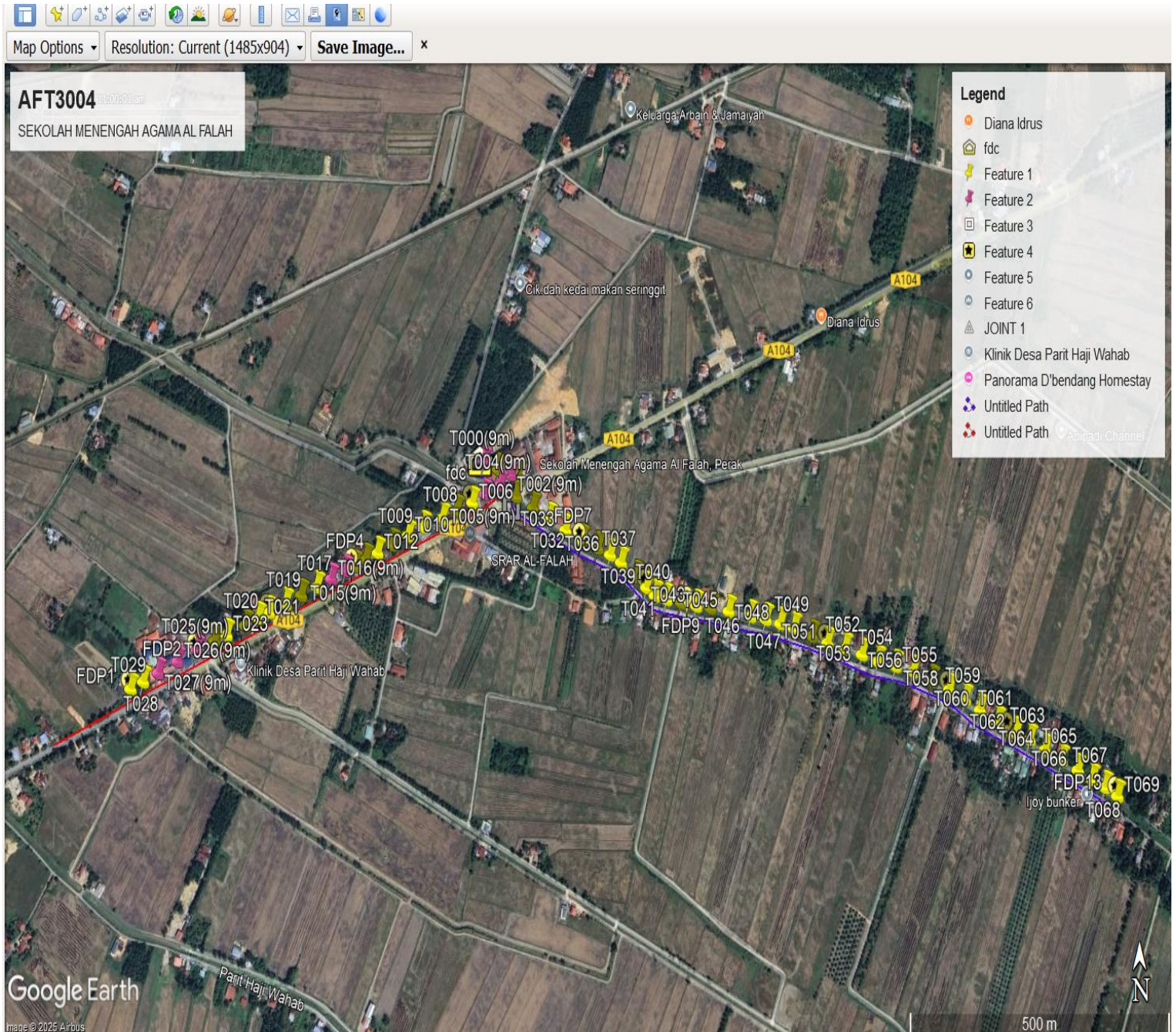
2.0 LOCAL AUTHORITY SUMMARY

Daerah Batu Gajah

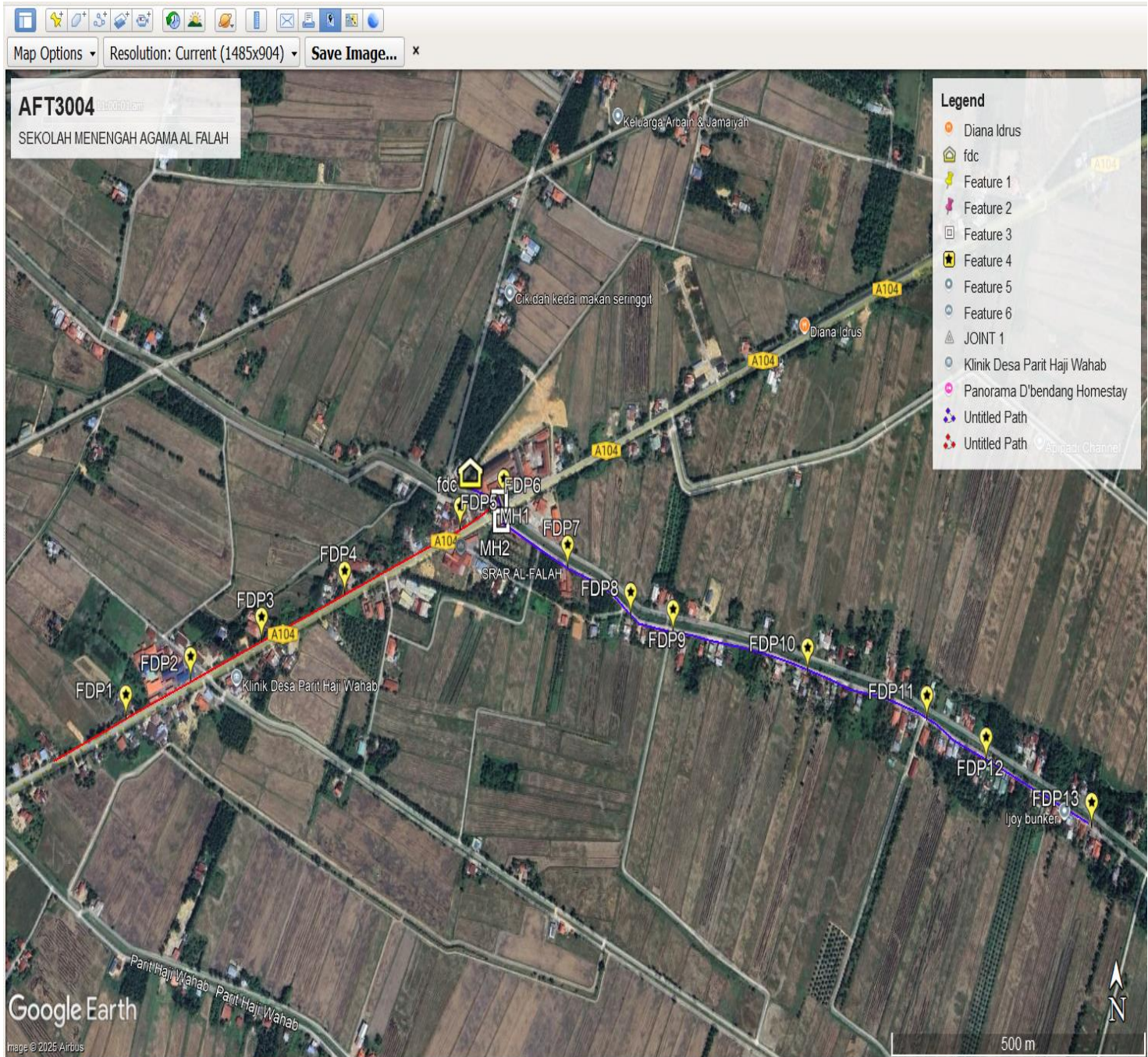
NO	ITEMS	Owner	Quantity	Distance (m)
1	HDD	JKR	1	65m
		Majlis	-	-
		Estate / Private Land	-	-
2	New Pole	JKR	27	850m
		Majlis	43	1380m
		Estate / Private Land	-	-
Total Distance (m)				2295m

3.0 SITE PLAN (KMZ)

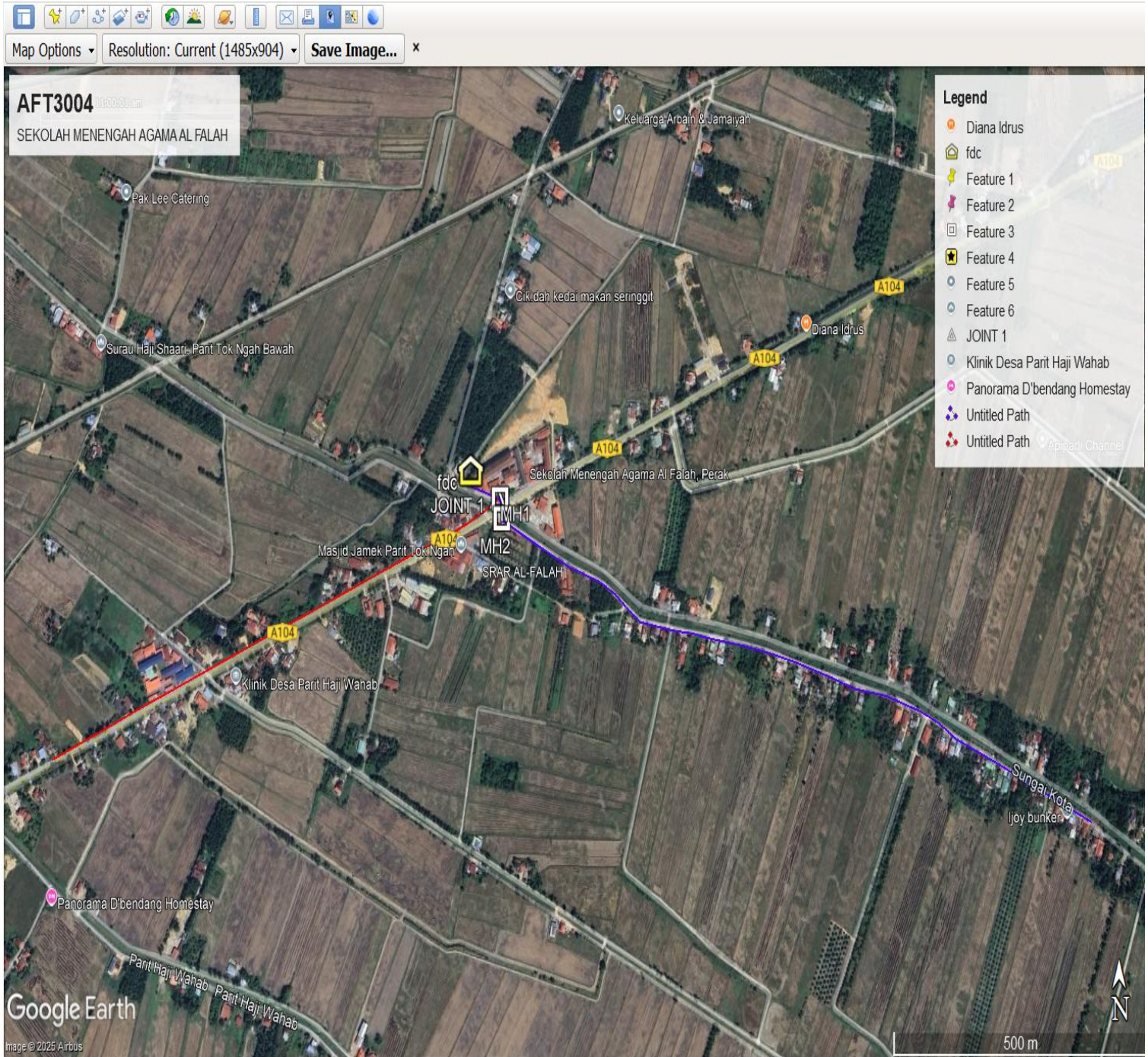
3.1 Overview Site Area (Propose New Pole)



3.2 Proposed FDP and Closure



3.3 Site Plan - KMZ Routing (All Local Authority)



Red Colour - JKR Road
Blue Colour - Majlis Road

4.0 PROPOSED NEW MANHOLE

Proposed New Manhole Coordinate					
No.	Manhole Number	Distance (m)	Latitude	Longitude	Local Authority
1	MH01	0m	5.090396°	100.431697°	JKR Daerah Kerian
2	MH02	65m	5.090142°	100.431729°	JKR Daerah Kerian

4.1 PROPOSED NEW POLE

Proposed New Pole Coordinate					
No.	Pole Number	Distance (m)	Latitude	Longitude	Local Authority
0	T000(9m)	35m	5.090605	100.431164	Majlis Daerah Kerian
1	T001	35m	5.090498	100.431425	Majlis Daerah Kerian
2	T002(9m)	35m	5.090422	100.431651	JKR Daerah Kerian
3	T003	35m	5.090133	100.431752	JKR Daerah Kerian
4	T004(9m)	35m	5.090279	100.431462	JKR Daerah Kerian
5	T005(9m)	35m	5.090160	100.431181	JKR Daerah Kerian
6	T006	35m	5.090052	100.430958	JKR Daerah Kerian
7	T007	35m	5.089941	100.430676	JKR Daerah Kerian
8	T008	35m	5.089836	100.430420	JKR Daerah Kerian
9	T009	35m	5.089719	100.430079	JKR Daerah Kerian
10	T010	35m	5.089602	100.429803	JKR Daerah Kerian
11	T011	35m	5.089483	100.429515	JKR Daerah Kerian
12	T012	35m	5.089377	100.429252	JKR Daerah Kerian
13	T013	35m	5.089286	100.429040	JKR Daerah Kerian
14	T014	35m	5.089201	100.428836	JKR Daerah Kerian
15	T015(9m)	35m	5.089136	100.428675	JKR Daerah Kerian
16	T016(9m)	35m	5.089028	100.428419	JKR Daerah Kerian
17	T017	35m	5.088923	100.428169	JKR Daerah Kerian
18	T018	35m	5.088814	100.427893	JKR Daerah Kerian
19	T019	35m	5.088703	100.427615	JKR Daerah Kerian
20	T020	35m	5.088591	100.427327	JKR Daerah Kerian
21	T021	35m	5.088512	100.427134	JKR Daerah Kerian
22	T022	35m	5.088414	100.426905	JKR Daerah Kerian
23	T023	35m	5.088294	100.426574	JKR Daerah Kerian
24	T024	35m	5.088209	100.426359	JKR Daerah Kerian
25	T025(9m)	35m	5.088092	100.426045	JKR Daerah Kerian
26	T026(9m)	35m	5.087946	100.425705	JKR Daerah Kerian
27	T027(9m)	35m	5.087795	100.425369	JKR Daerah Kerian
28	T028	35m	5.087688	100.425107	JKR Daerah Kerian
29	T029	35m	5.087591	100.424887	JKR Daerah Kerian
30	T030	35m	5.090422	100.431773	JKR Daerah Kerian
31	T031	35m	5.089984	100.432065	Majlis Daerah Kerian

32	T032	35m	5.089838	100.432371	Majlis Daerah Kerian
33	T033	35m	5.089685	100.432660	Majlis Daerah Kerian
34	T034	35m	5.089547	100.432956	Majlis Daerah Kerian
35	T035	35m	5.089443	100.433245	Majlis Daerah Kerian
36	T036	35m	5.089353	100.433473	Majlis Daerah Kerian
37	T037	35m	5.089251	100.433670	Majlis Daerah Kerian
38	T038	35m	5.089056	100.433946	Majlis Daerah Kerian
39	T039	35m	5.088914	100.434126	Majlis Daerah Kerian
40	T040	35m	5.088807	100.434279	Majlis Daerah Kerian
41	T041	35m	5.088761	100.434490	Majlis Daerah Kerian
42	T042	35m	5.088719	100.434746	Majlis Daerah Kerian
43	T043	35m	5.088674	100.435022	Majlis Daerah Kerian
44	T044	35m	5.088646	100.435278	Majlis Daerah Kerian
45	T045	35m	5.088604	100.435606	Majlis Daerah Kerian
46	T046	35m	5.088538	100.436003	Majlis Daerah Kerian
47	T047	35m	5.088499	100.436272	Majlis Daerah Kerian
48	T048	35m	5.088441	100.436532	Majlis Daerah Kerian
49	T049	35m	5.088381	100.436776	Majlis Daerah Kerian
50	T050	35m	5.088281	100.437096	Majlis Daerah Kerian
51	T051	35m	5.088190	100.437375	Majlis Daerah Kerian
52	T052	35m	5.088117	100.437683	Majlis Daerah Kerian
53	T053	35m	5.088039	100.437984	Majlis Daerah Kerian
54	T054	35m	5.087948	100.438262	Majlis Daerah Kerian
55	T055	35m	5.087887	100.438579	Majlis Daerah Kerian
56	T056	35m	5.087817	100.438894	Majlis Daerah Kerian
57	T057	35m	5.087695	100.439221	Majlis Daerah Kerian
58	T058	35m	5.087583	100.439531	Majlis Daerah Kerian
59	T059	35m	5.087454	100.439804	Majlis Daerah Kerian
60	T060	35m	5.087320	100.440064	Majlis Daerah Kerian
61	T061	35m	5.087162	100.440364	Majlis Daerah Kerian
62	T062	35m	5.087021	100.440685	Majlis Daerah Kerian
63	T063	35m	5.086940	100.440928	Majlis Daerah Kerian
64	T064	35m	5.086808	100.441198	Majlis Daerah Kerian
65	T065	35m	5.086676	100.441478	Majlis Daerah Kerian
66	T066	35m	5.086551	100.441755	Majlis Daerah Kerian
67	T067	35m	5.086431	100.441995	Majlis Daerah Kerian
68	T068	35m	5.086333	100.442216	Majlis Daerah Kerian
69	T069	35m	5.086223	100.442429	Majlis Daerah Kerian

Type	7.5m	9m	Total
No of pole	61	9	70

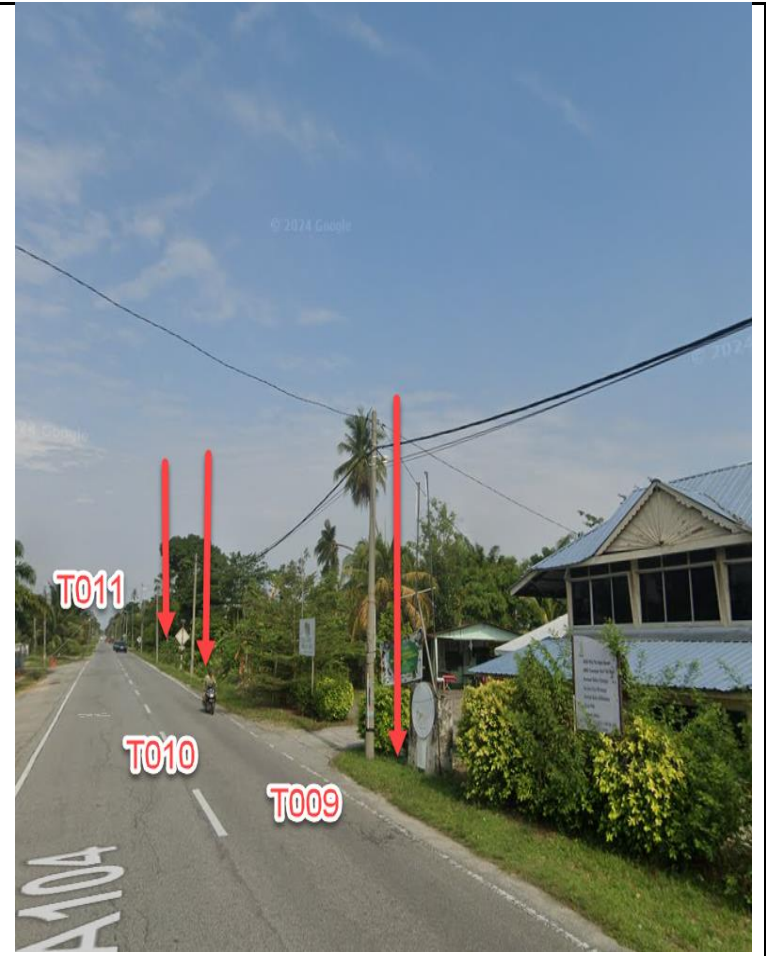
5.0 SITE PHOTOS - PROPOSED HDD AND NEW MANHOLE

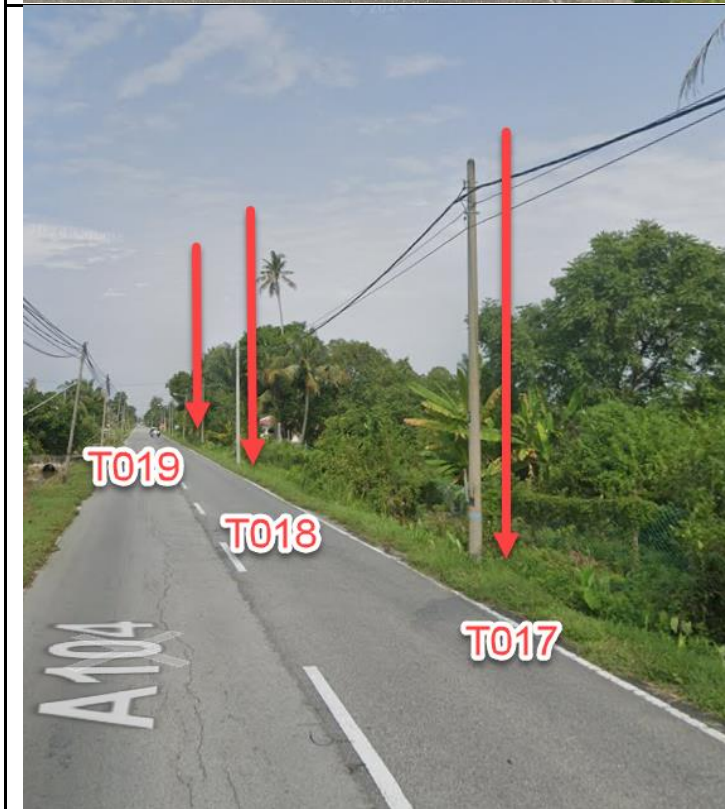


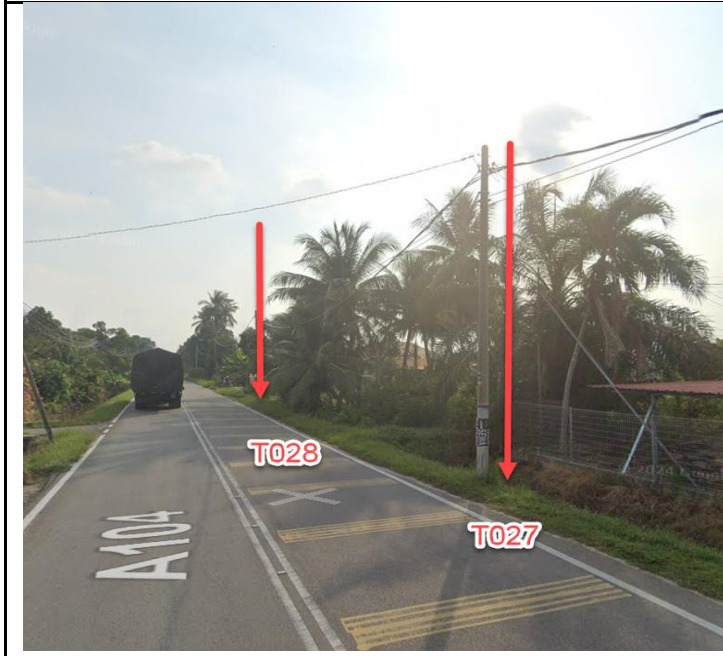
6.0 SITE PHOTOS - PROPOSED NEW POLE



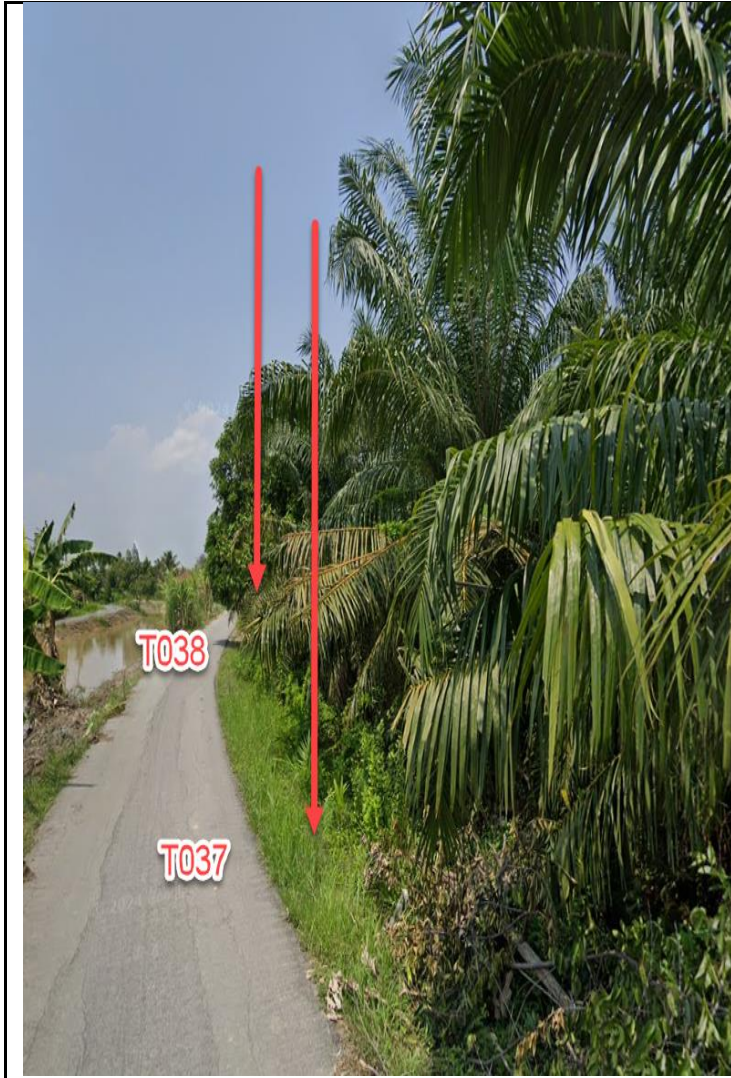


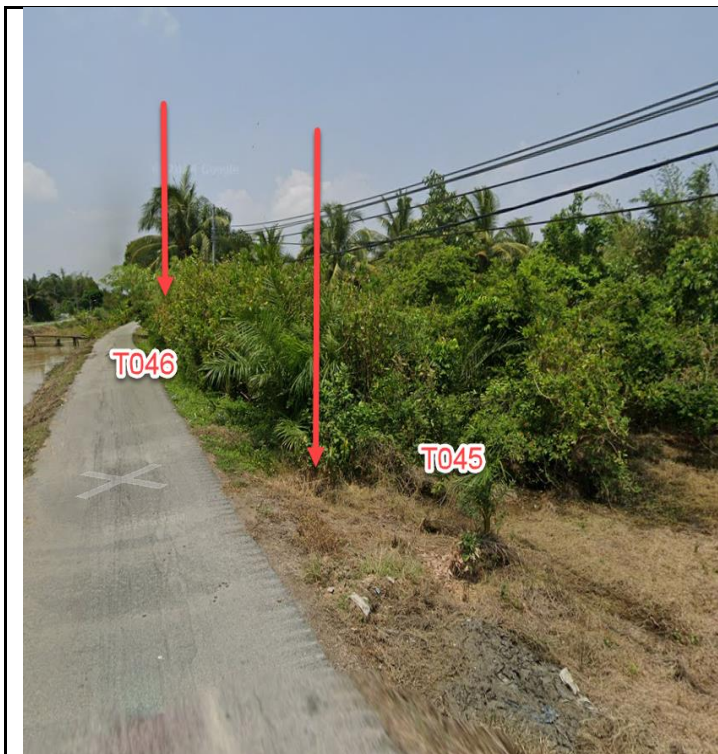




















NO	LOCAL COUNCIL / AUTHORITY	REMARK
1	Majlis Daerah Kerian	1380m
2	JKR Daerah Kerian	915m

