

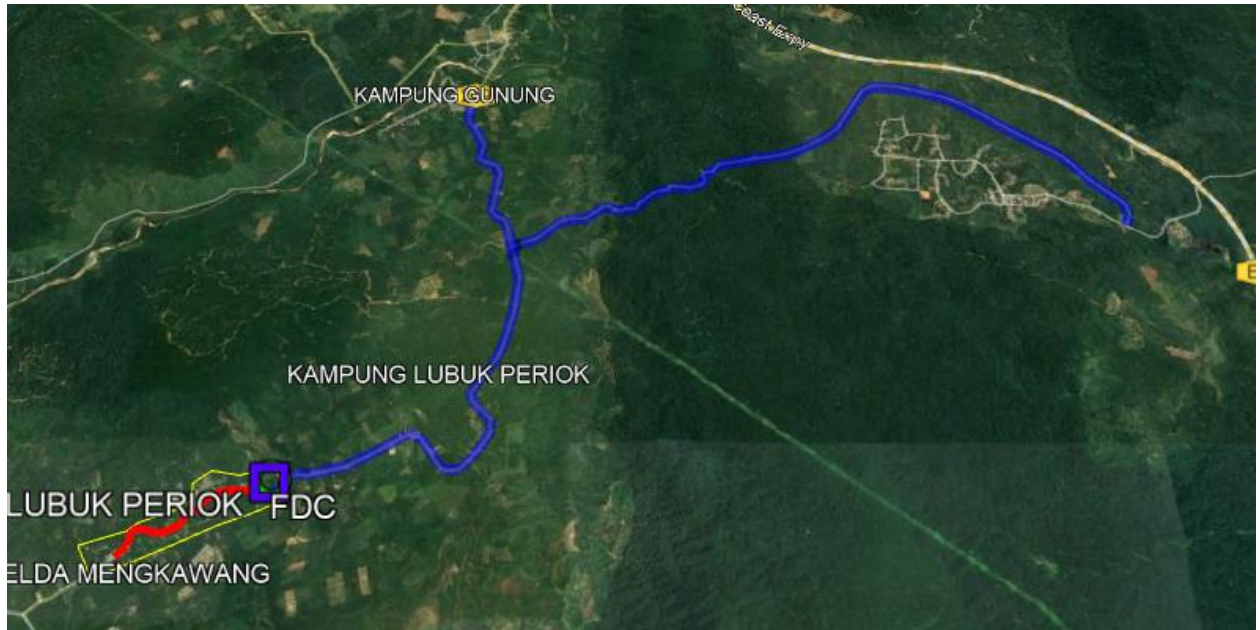
BUTIRAN JALAN TERLIBAT

	NAMA JALAN	DAERAH	KAEDAH KERJA	KOORDINAT MULA	KOORDINAT AKHIR	JARAK (METER)
1	JALAN KG LUBUK PERIUK	HULU TERENGGANU	PLINTH	4.886926, 103.043497	-	1 X 1 METER
2	JALAN KG LUBUK PERIUK	HULU TERENGGANU	KABINET	4.886926, 103.043497	-	1 X 1 METER
3	JALAN KG LUBUK PERIUK	HULU TERENGGANU	FIBER 1	4.886926, 103.043497	4.934770° 103.058903°	7940
4	1691 JALAN LINK MENGKAWANG	HULU TERENGGANU	FIBER 1	4.914800° 103.064293°	4.917399 103.129219	9120
5	JALAN KG LUBUK PERIUK	HULU TERENGGANU	GPON	4.886926, 103.043497	4.88108,103.03043	1850
6	JALAN KG LUBUK PERIUK	HULU TERENGGANU	HDD	4.91489, 103.06470	4.91514, 103.06542	100
7	JALAN KG LUBUK PERIUK	HULU TERENGGANU	OPEN CUT	4.91365, 103.06467	4.91417, 103.06453	60
JUMLAH JARAK PERMOHONAN						19070M

PERMOHONAN ASAL

	NAMA JALAN	DAERAH	KAEDAH KERJA	KOORDINAT MULA	KOORDINAT AKHIR	JARAK (METER)
	JALAN SK LUBOK PERIUK	HULU TERENGGANU	Plinth	4.886881, 103.043463		1 X 1 Meter
	JALAN SK LUBOK PERIUK	HULU TERENGGANU	Kabinet	4.886881, 103.043463		1 X 1 Meter
	JALAN SK LUBOK PERIUK, JALAN KG LUBOK PERIUK, 1691 JALAN LINK MENKAWANG	HULU TERENGGANU	Aerial Fiber Routing Backhaul (Anggaran)	4.886881, 103.043463	4.934952, 103.057375 4.921375, 103.120586	15,842Meter (Anggaran)
JUMLAH JARAK PERMOHONAN						15,842 Meter

CADANGAN TEKNIKAL UNTUK SEKOLAH KEBANGSAAN LUBUK PERIUK



MAKLUMAT CADANGAN TEKNIKAL

Nama Site:	SEKOLAH KEBANGSAAN LUBUK PERIUK
Site ID:	TBA5028
Lokasi PoP Kabinet:	JALAN SK LUBOK PERIUK, JALAN KG LUBOK PERIUK, 1691 JALAN LINK MENGGAWANG
GPS Koordinat:	4.886926, 103.043497
Lokasi Laluan Fiber	JALAN KG LUBOK PERIUK
GPS Koordinat Fiber 1: (Titik Mula-Anggaran)	4.886926, 103.043497
GPS Koordinat Fiber 1: (Titik Akhir-Anggaran)	4.934770° 103.058903°
GPS Koordinat Fiber 2: (Titik Mula-Anggaran)	4.914800° 103.064293°
GPS Koordinat Fiber 2: (Titik Akhir-Anggaran)	4.917399 103.129219
GPS Koordinat GPON: (Titik Mula-Anggaran)	4.886926, 103.043497
GPS Koordinat GPON: (Titik Akhir-Anggaran)	4.88108, 103.03043
Tarikh:	06/11/2024

Kandungan:

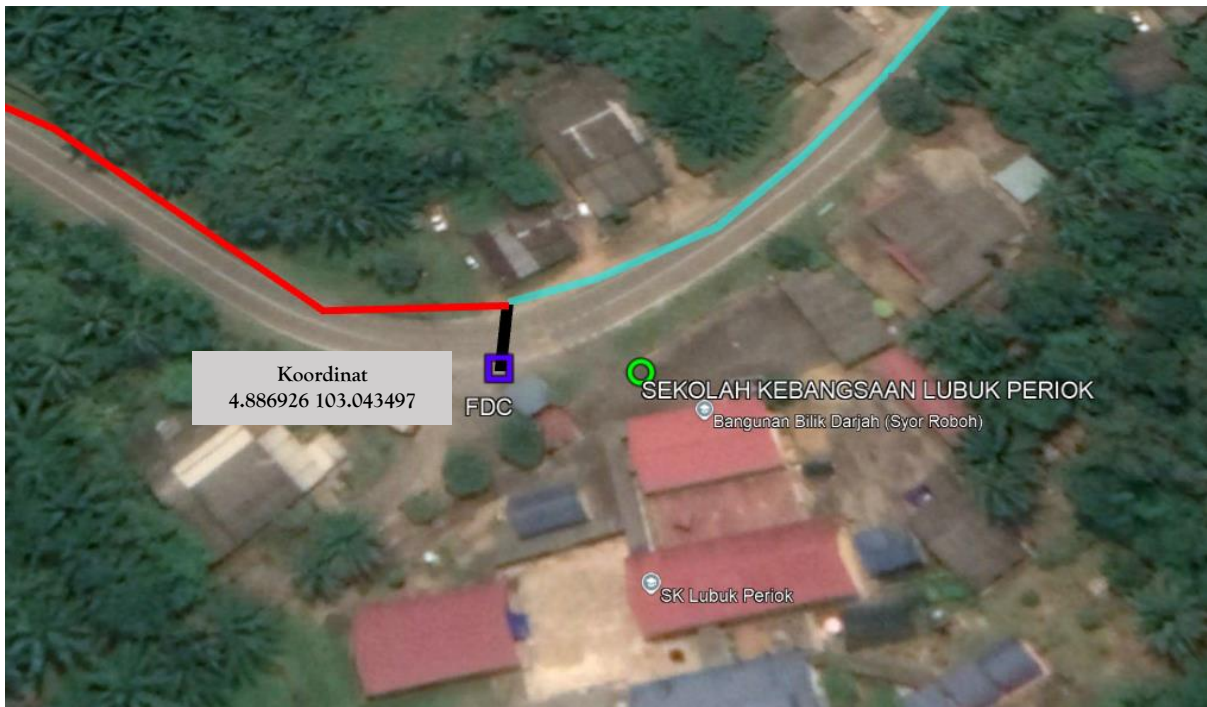
1. Ringkasan Pelaksanaan
2. Peta Penandaan Lokasi (Plinth Kabinet)
3. Gambar Lokasi (*Plinth* Kabinet)
4. Cadangan Laluan Kabel Fiber Pole
5. Cadangan Jadual & Skop Kerja Pelaksanaan PoP *Plinth* Kabinet
6. Cadangan Jadual & Skop Kerja Pelaksanaan Fiber

1. RINGKASAN PELAKSANAAN

1.1 Cadangan Pelaksanaan

Bil	Perkara	Kuantiti
1	PoP <i>Plinth</i> Kabinet Satu (1) unit	1
2	Jumlah Cadangan Fiber Pole (Anggaran) 540 poles	540 poles
3	Jumlah Jarak Fiber Pole (Anggaran) Fiber 1 - 7940M Fiber 2 - 9120M GPON - 1850M HDD - 100M Open Cut - 60M	18910m

2. PETA PENANDAAN LOKASI *PLINTH* KABINET (PoP)



 SEKOLAH KEBANGSAAN LUBUK PERIOIK (TBA5028)

 POP









3. GAMBAR LOKASI *PLINTH* KABINET (PoP)



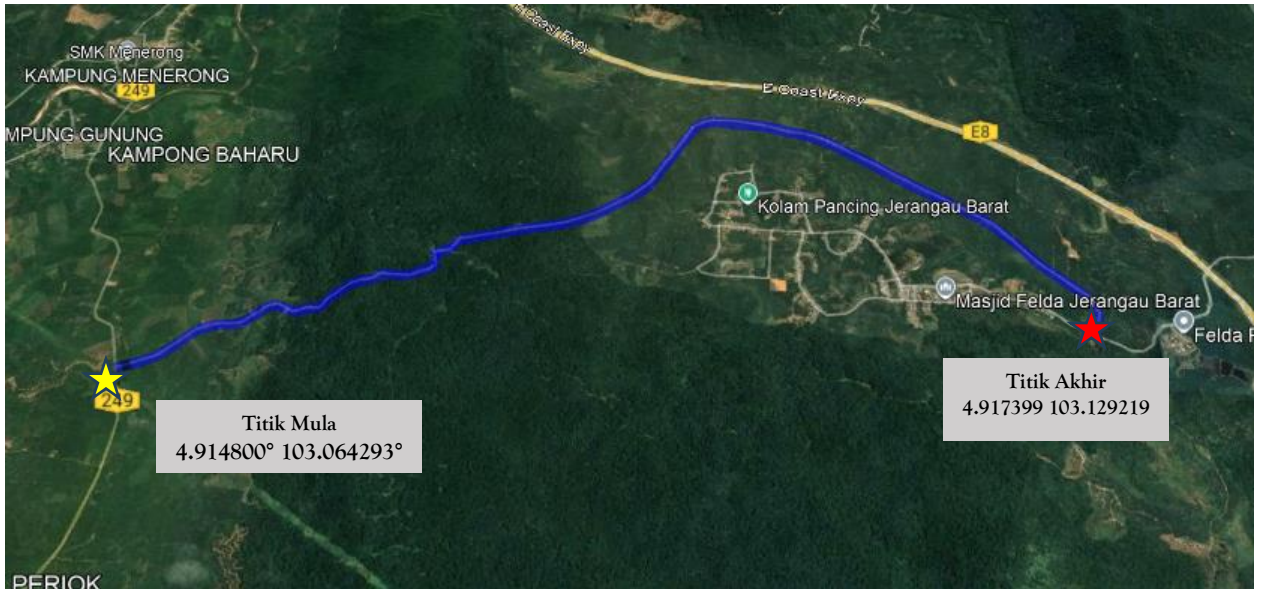
4. CADANGAN LALUAN KABEL FIBER POLE (ANGGARAN)





Fiber 1







-  Kawasan Sempadan Fiber Servis
-  Kabel Fiber (Under Ground)
-  Laluan Kabel Fiber (Backhaul)
-  Laluan Kabel Fiber (Main GPON) Laluan
-  Sekolah
-  POP
-  Titik Mula Fiber
-  Titik Akhir Fiber

Fiber 2











-  Kawasan Sempadan Fiber Servis
-  Kabel Fiber (Under Ground)
-  Laluan Kabel Fiber (Backhaul)
-  Laluan Kabel Fiber (Main GPON) Laluan

-  Sekolah
-  POP
-  Titik Mula Fiber
-  Titik Akhir Fiber

GPON



-  Kawasan Sempadan Fiber Servis
-  Laluan Kabel Fiber (Under Ground)
-  Laluan Kabel Fiber (Backhaul)
-  Laluan Kabel Fiber (Main GPON)
-  Sekolah
-  POP
-  Titik Mula Fiber
-  Titik Akhir Fiber

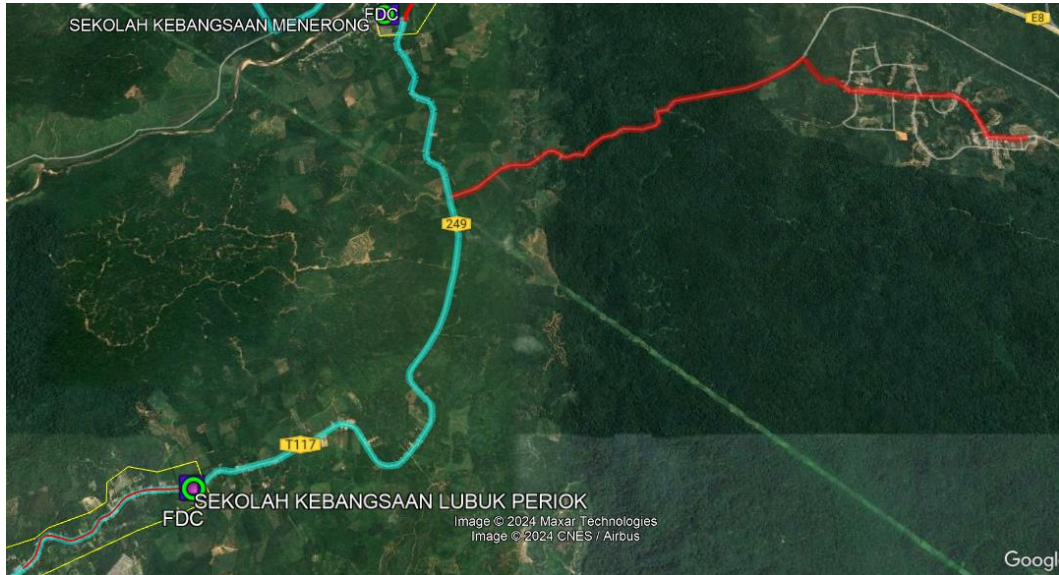
5. CADANGAN JADUAL & SKOP KERJA AWAL PELAKSANAAN PoP *PLINTH* KABINET

Bil	Perkara	Hari	1	2	3	4	5	6	7	8	9	10	11	12	13	14
1	<u>Kerja Civil, Teknikal dan, Elektrikal</u>															
1.1	Persiapan di Tapak	1														
1.2	Kerja Pemasangan <i>Plinth</i> PoP	1														
1.3	Kerja Pemasangan Kabinet, FDC & rectifier	1														

6. CADANGAN JADUAL & SKOP KERJA PELAKSANAAN FIBER

Bil	Perkara	Bulan /Minggu											
		Nov 2024			Dec 2024			Jan 2025					
		Minggu 3-4			Minggu 1-4			Minggu 1-2		Minggu 3-4			
1	Persiapan di Tapak	■											
2	Kerja Pengesahan Kabel	■											
3	Kerja Pengorekan		■	■									
4	Kerja Rentang Kabel				■	■	■						
5	Kerja Menimbus Tanah							■	■				
6	Kerja Penurapan Jalan/Pembersihan Tapak									■	■		
7	<i>Integration, Testing & Commissioning</i>											■	■
8	Selesai												■

Maklumat Asal Permohonan



	NAMA JALAN	DAERAH	KAEDAH KERJA	KOORDINAT MULA	KOORDINAT AKHIR	JARAK (METER)
	JALAN SK LUBOK PERIUK	HULU TERENGGANU	Plinth	4.886881, 103.043463		1 X 1 Meter
	JALAN SK LUBOK PERIUK	HULU TERENGGANU	Kabinet	4.886881, 103.043463		1 X 1 Meter
	JALAN SK LUBOK PERIUK, JALAN KG LUBOK PERIUK, 1691 JALAN LINK MENGKAWANG	HULU TERENGGANU	Aerial Fiber Routing Backhaul (Anggaran)	4.886881, 103.043463	4.934952, 103.057375 4.921375, 103.120586	15,842Meter (Anggaran)
JUMLAH JARAK PERMOHONAN						15,842 Meter

Maklumat Laluan Fiber



Laluan **kiri** jalan – Hijau

Laluan **kanan** jalan – Kuning

1	JALAN KG LUBUK PERIUK	HULU TERENGGANU	FIBER 1	4.886926, 103.043497	4.934770° 103.058903°	7940
2	1691 JALAN LINK MENGKAWANG	HULU TERENGGANU	FIBER 1	4.914800° 103.064293°	4.917399 103.129219	9120
3	JALAN KG LUBUK PERIUK	HULU TERENGGANU	HDD	4.91489, 103.06470	4.91514, 103.06542	100
4	JALAN KG LUBUK PERIUK	HULU TERENGGANU	OPEN CUT	4.91365, 103.06467	4.91417, 103.06453	60

Gambarajah Laluan Fiber

Fiber 1



Laluan kiri jalan dari titik awal hingga akhir



Laluan kiri jalan dari titik mula - 4.886926, 103.043497



Laluan kiri jalan

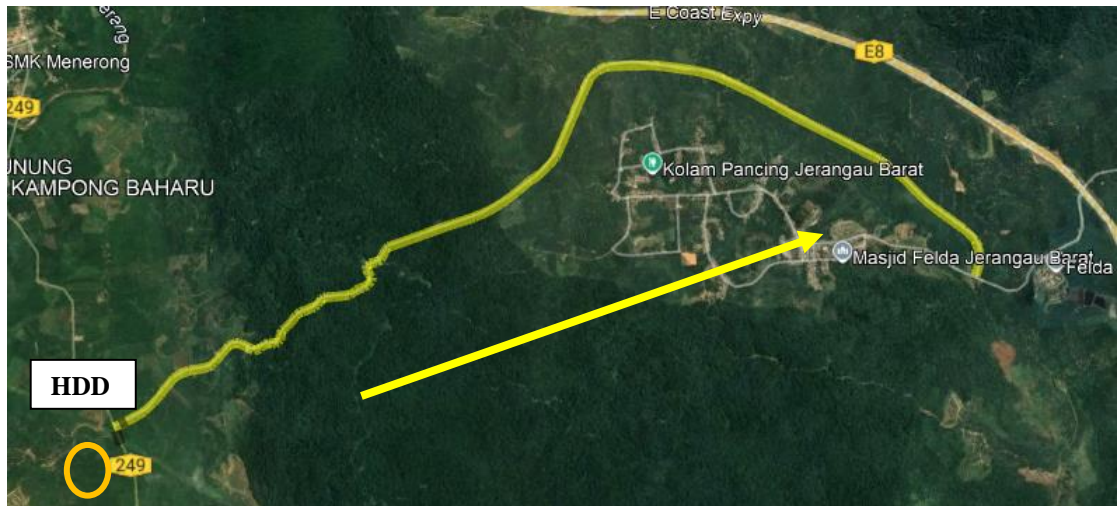


Open Cut - Menyeberang Pylon TNB (60m)



Laluan kiri sehingga titik akhir - 4.934770° 103.058903°

Fiber 2



Laluan kanan jalan dari titik awal hingga akhir



Laluan **kanan** jalan dari titik mula - 4.914800° 103.064293°

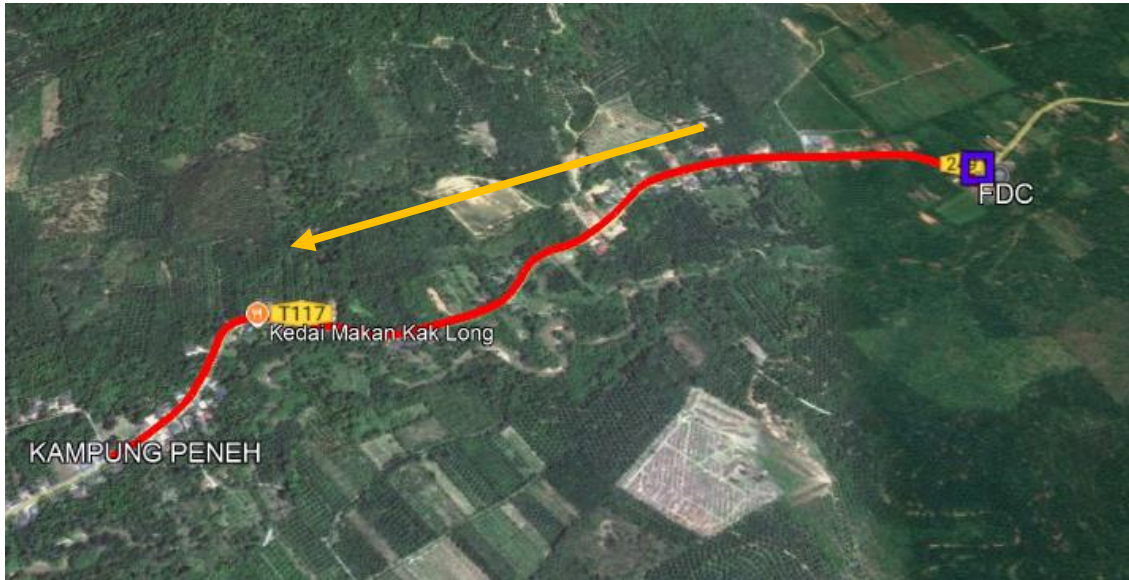


HDD - Menyeberang Jambatan Sungai (100m)



Laluan kanan jalan sehingga titik akhir - 4.917399 103.129219

GPON



Laluan kanan jalan dari titik awal hingga akhir



Laluan kanan jalan dari sekolah



Laluan kanan jalan

-Tamat-