

TECHNICAL PROPOSAL

POP2 AEE9003 SEKOLAH MENENGAH KEBANGSAAN MALIM NAWAR (D-SIDE)

Company Name	:	WCWL COMMUNICATIONS SDN BHD
Company Address	:	127, Jalan PUJ 3/3, Taman Puncak Jalil 43300 Subang Jaya Selangor
Prepared By	:	HANA
Date	:	26/11/2024



POINT A

POINT B

Starting Point

Site / Boundary Name	:	SEKOLAH MENENGAH KEBANGSAAN MALIM NAWAR
Address	:	Jalan Angsana, Malim Nawar
District	:	Kampar
Postcode	:	31700
State	:	Perak
GPS Coordinate	:	4.34750, 101.11194
LRD	:	A

End Point

Site / Boundary Name	:	SEKOLAH MENENGAH KEBANGSAAN MALIM NAWAR
Address	:	Malim Nawar
District	:	Kampar
Postcode	:	31700
State	:	Perak
GPS Coordinate	:	4.3498950, 101.113386
	:	B



PROJEK PENYEDIAAN DAN PENYELENGGARAAN POINT OF PRESENSE (POP) FASA 2: HUB INFRASTRUKTUR GENTIAN OPTIK BERHAMPIRAN DENGAN SEKOLAH, KAWASAN PERINDUSTRIAN, PREMIS KERAJAAN DAN KOMUNITI SEKITARNYA OLEH KEMENTERIAN KOMUNIKASI MALAYSIA - ZON UTARA (KKMM.400-11/17/132(1))



Work Summary

No	Proposed Distance and Method	Unit	Qty
1	Horizontal Directional Drilling (HDD)	m	0
2	Carriage Way Open trench (CW)	m	0
3	Grass Verge Open Trenching (GV)	m	0
4	Micro trenching (MT)	m	0
	Total		0

	Other Information	Unit	Qty
1	Proposed Manhole	EA	0
2	Proposed Pole	EA	37
3	Joint Closure	EA	2
4	Estimated time required for completion	days	30



PROJEK PENYEDIAAN DAN PENYELENGGARAAN POINT OF PRESENSE (POP) FASA 2: HUB INFRASTRUKTUR GENTIAN OPTIK BERHAMPIRAN DENGAN SEKOLAH, KAWASAN PERINDUSTRIAN, PREMIS KERAJAAN DAN KOMUNITI SEKITARNYA OLEH KEMENTERIAN KOMUNIKASI MALAYSIA - ZON UTARA (KKMM.400-11/17/132(1))



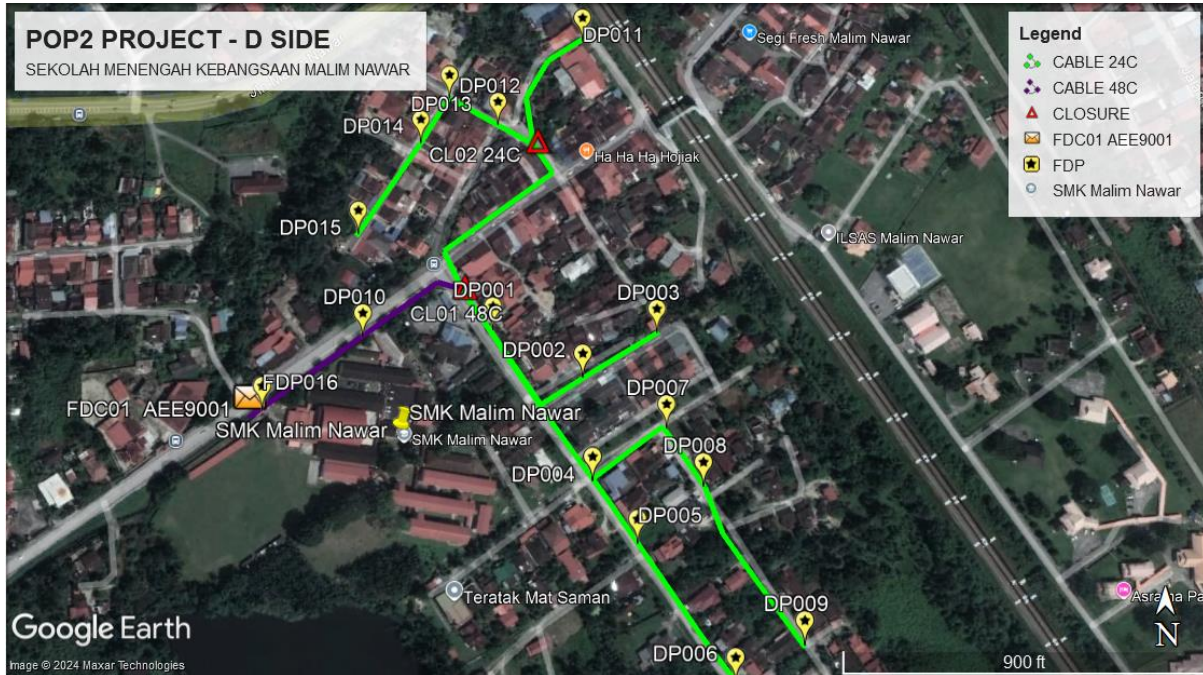
Local Authority Summary

1. Daerah Kampar

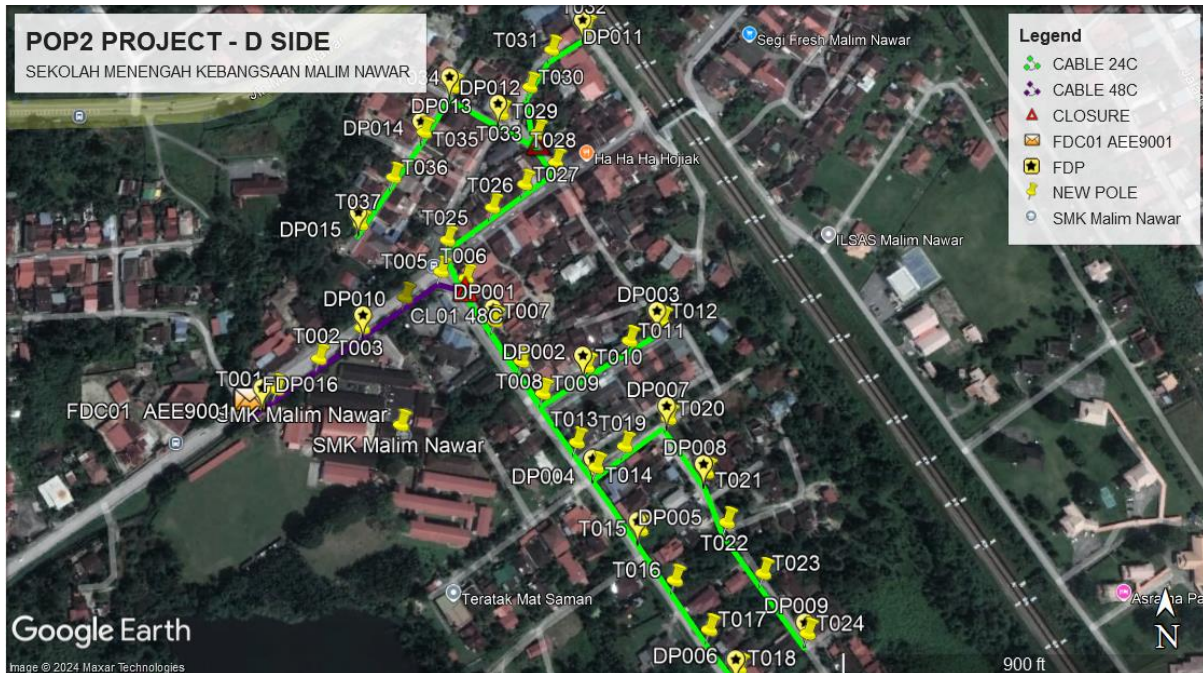
Bil	Items	Owner	Quantity	Distance
1	HDD	JKR	-	-
		Majlis	-	-
		Estate / Private Land	-	-
2	New Pole	JKR	-	-
		Majlis	37 pcs	1480m
		Estate / Private Land	-	-
3	Existing TNB Pole	JKR	-	-
		Majlis	-	-
		Estate / Private Land	-	-
Total				1480m

Site Plan – KMZ (Overview site area)

Proposed FDP and Closure



Proposed New Pole

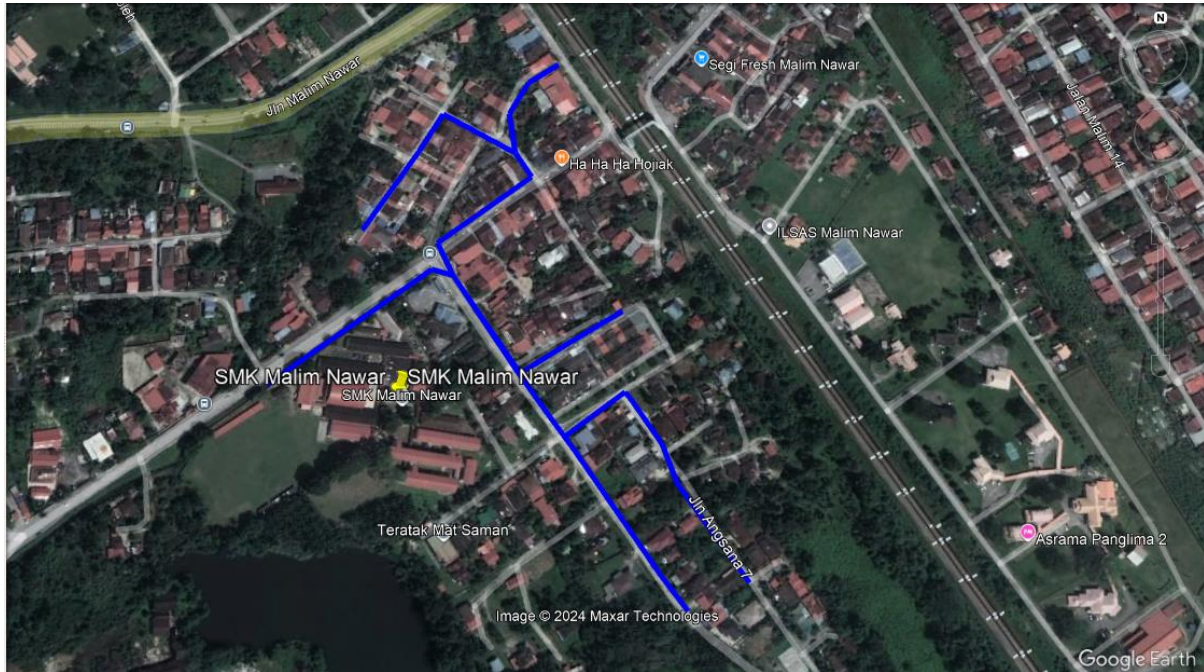




PROJEK PENYEDIAAN DAN PENYELENGGARAAN POINT OF PRESENSE (POP) FASA 2: HUB INFRASTRUKTUR GENTIAN OPTIK BERHAMPIRAN DENGAN SEKOLAH, KAWASAN PERINDUSTRIAN, PREMIS KERAJAAN DAN KOMUNITI SEKITARNYA OLEH KEMENTERIAN KOMUNIKASI MALAYSIA - ZON UTARA (KKMM.400-11/17/132(1))

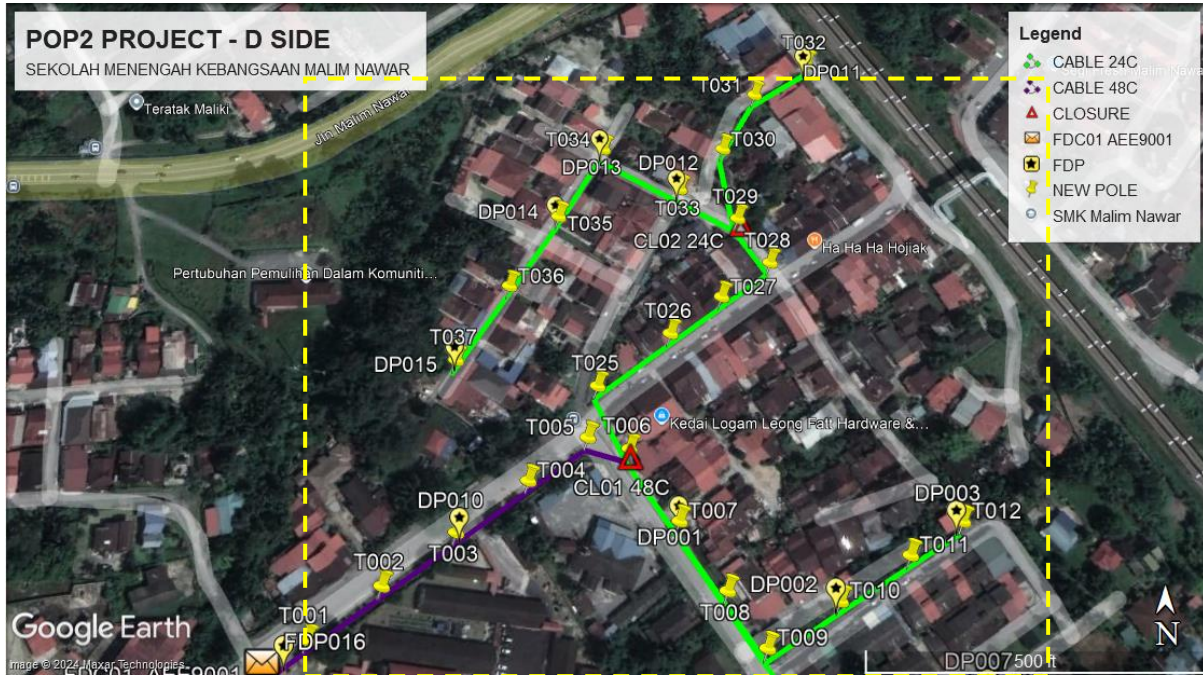


Site Plan – KMZ Routing (All Local Authority)

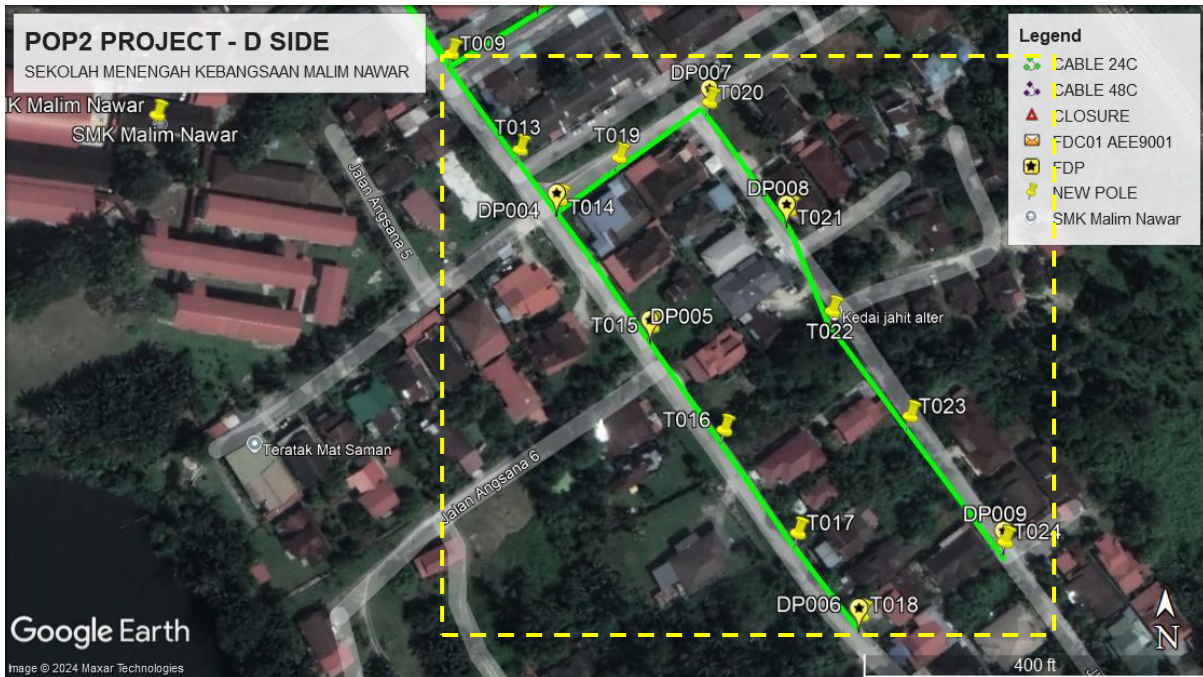


Blue Colour – Majlis Perbandaran Kampar

Route 1



Route 2





PROJEK PENYEDIAAN DAN PENYELENGGARAAN POINT OF PRESENSE (POP) FASA 2: HUB INFRASTRUKTUR GENTIAN OPTIK BERHAMPIRAN DENGAN SEKOLAH, KAWASAN PERINDUSTRIAN, PREMIS KERAJAAN DAN KOMUNITI SEKITARNYA OLEH KEMENTERIAN KOMUNIKASI MALAYSIA - ZON UTARA (KKMM.400-11/17/132(1))



Proposed New Pole Lat & Long Table

No.	Pole Number	Distance	Latitude	Longitude	Local Authority
1	FDC01 AE9001	0.00	4.347557	101.112108	Majlis Perbandaran Kampar
2	T001	40	4.347666	101.112264	Majlis Perbandaran Kampar
3	T002	40	4.347878	101.112555	Majlis Perbandaran Kampar
4	T003	40	4.348094	101.112852	Majlis Perbandaran Kampar
5	T004	40	4.348310	101.113149	Majlis Perbandaran Kampar
6	T005	40	4.348493	101.113399	Majlis Perbandaran Kampar
7	T006	40	4.348444	101.113576	Majlis Perbandaran Kampar
8	T007	40	4.348140	101.113783	Majlis Perbandaran Kampar
9	T008	40	4.347858	101.113975	Majlis Perbandaran Kampar
10	T009	40	4.347634	101.114127	Majlis Perbandaran Kampar
11	T010	40	4.347817	101.114430	Majlis Perbandaran Kampar
12	T011	40	4.348000	101.114730	Majlis Perbandaran Kampar
13	T012	40	4.348138	101.114959	Majlis Perbandaran Kampar
14	T013	40	4.347297	101.114363	Majlis Perbandaran Kampar
15	T014	40	4.347125	101.114498	Majlis Perbandaran Kampar
16	T015	40	4.346703	101.114800	Majlis Perbandaran Kampar
17	T016	40	4.346367	101.115033	Majlis Perbandaran Kampar
18	T017	40	4.346040	101.115264	Majlis Perbandaran Kampar
19	T018	40	4.345784	101.115462	Majlis Perbandaran Kampar
20	T019	40	4.347269	101.114695	Majlis Perbandaran Kampar



PROJEK PENYEDIAAN DAN PENYELENGGARAAN POINT OF PRESENSE (POP) FASA 2: HUB INFRASTRUKTUR GENTIAN OPTIK BERHAMPIRAN DENGAN SEKOLAH, KAWASAN PERINDUSTRIAN, PREMIS KERAJAAN DAN KOMUNITI SEKITARNYA OLEH KEMENTERIAN KOMUNIKASI MALAYSIA - ZON UTARA (KKMM.400-11/17/132(1))



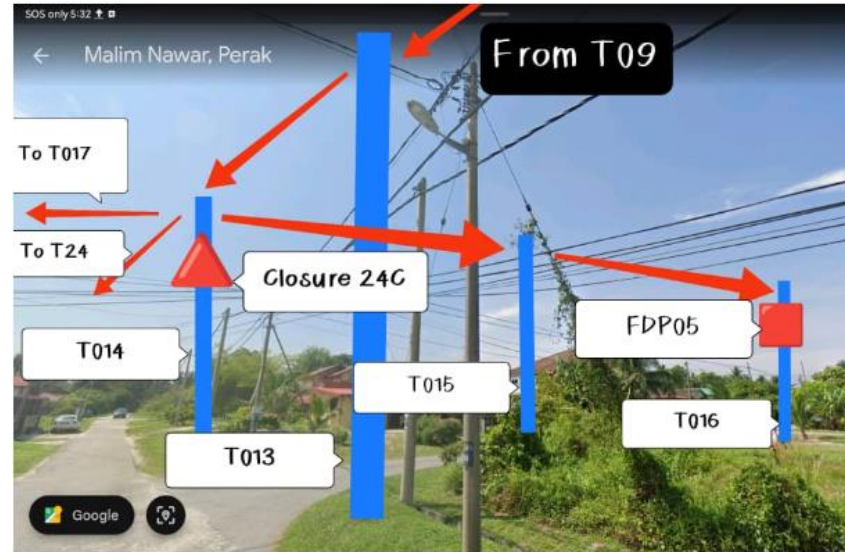
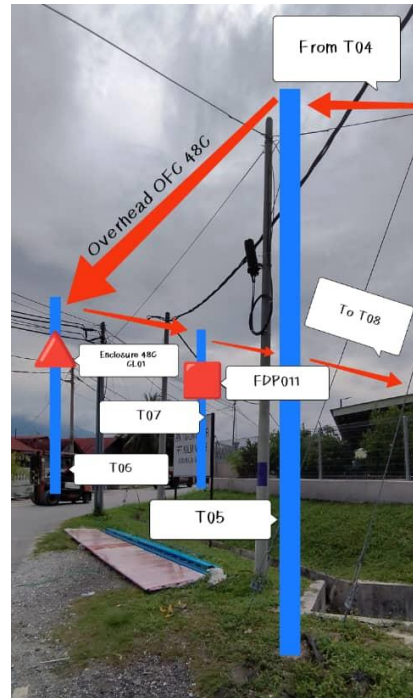
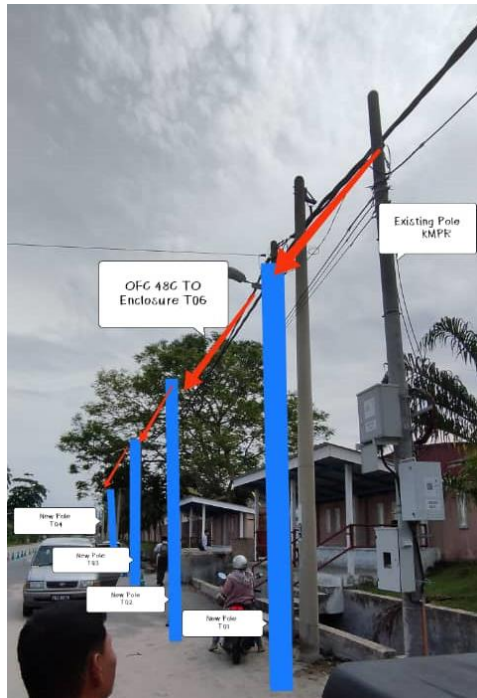
21	T020	40	4.347460	101.114999	Majlis Perbandaran Kampar
22	T021	40	4.347091	101.115257	Majlis Perbandaran Kampar
23	T022	40	4.346753	101.115393	Majlis Perbandaran Kampar
24	T023	40	4.346412	101.115638	Majlis Perbandaran Kampar
25	T024	40	4.346011	101.115932	Majlis Perbandaran Kampar
26	T025	40	4.348719	101.113440	Majlis Perbandaran Kampar
27	T026	40	4.348951	101.113758	Majlis Perbandaran Kampar
28	T027	40	4.349117	101.113987	Majlis Perbandaran Kampar
29	T028	40	4.349277	101.114206	Majlis Perbandaran Kampar
30	T029	40	4.349492	101.114071	Majlis Perbandaran Kampar
31	T030	40	4.349838	101.114016	Majlis Perbandaran Kampar
32	T031	40	4.350113	101.114171	Majlis Perbandaran Kampar
33	T032	40	4.350269	101.114421	Majlis Perbandaran Kampar
34	T033	40	4.349636	101.113812	Majlis Perbandaran Kampar
35	T034	40	4.349832	101.113463	Majlis Perbandaran Kampar
36	T035	40	4.349499	101.113262	Majlis Perbandaran Kampar
37	T036	40	4.349171	101.113048	Majlis Perbandaran Kampar
38	T037	40	4.348828	101.112826	Majlis Perbandaran Kampar



PROJEK PENYEDIAAN DAN PENYELENGGARAAN POINT OF PRESENSE (POP) FASA 2: HUB INFRASTRUKTUR GENTIAN OPTIK BERHAMPIRAN DENGAN SEKOLAH, KAWASAN PERINDUSTRIAN, PREMIS KERAJAAN DAN KOMUNITI SEKITARNYA OLEH KEMENTERIAN KOMUNIKASI MALAYSIA - ZON UTARA (KKMM.400-11/17/132(1))

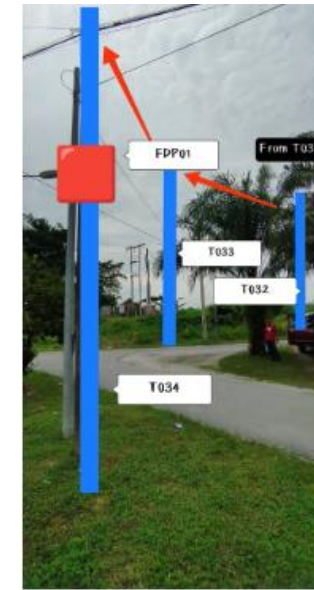
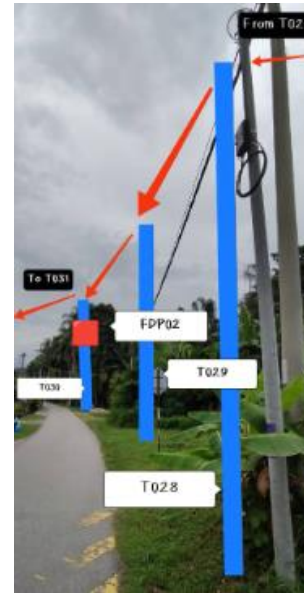
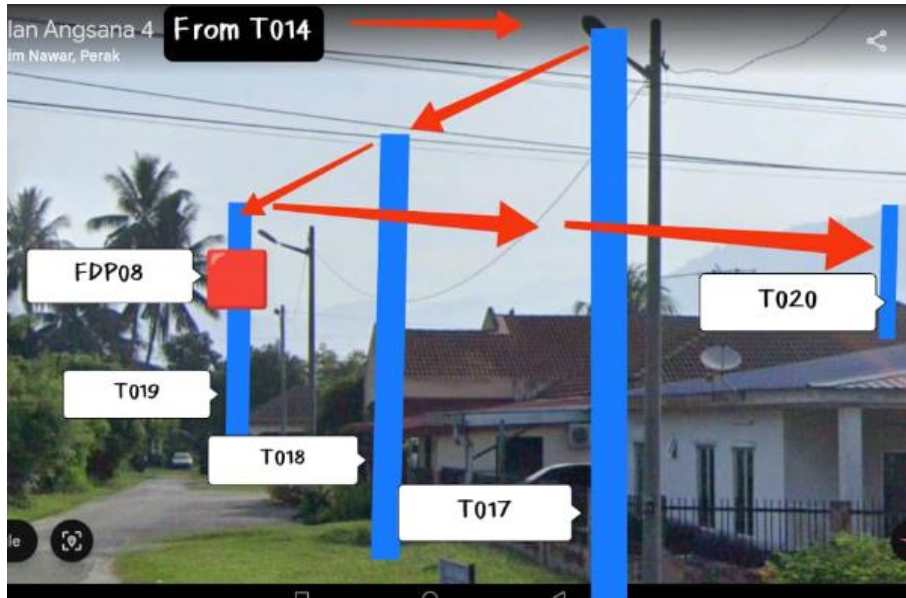


Site Photos – Proposed to install pole 7.5m



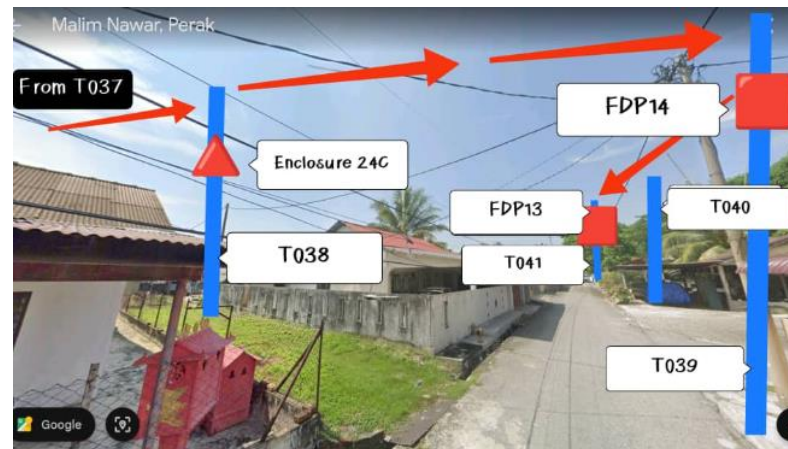
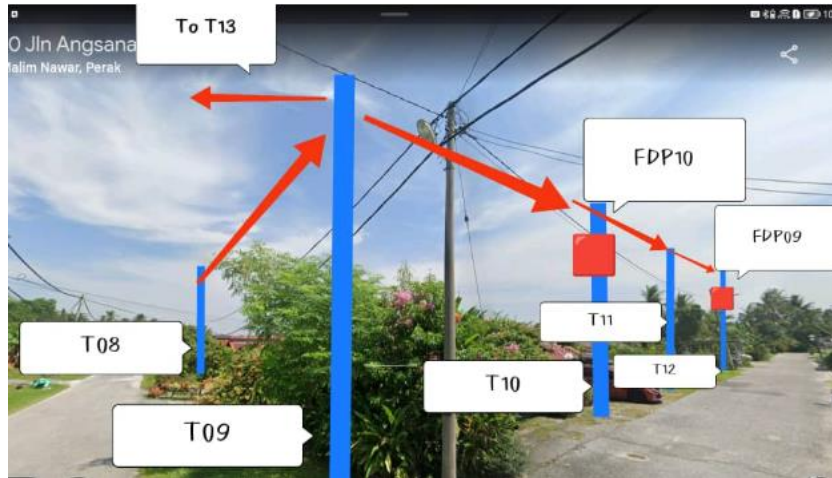


PROJEK PENYEDIAAN DAN PENYELENGGARAAN POINT OF PRESENSE (POP) FASA 2: HUB INFRASTRUKTUR GENTIAN OPTIK BERHAMPIRAN DENGAN SEKOLAH, KAWASAN PERINDUSTRIAN, PREMIS KERAJAAN DAN KOMUNITI SEKITARNYA OLEH KEMENTERIAN KOMUNIKASI MALAYSIA - ZON UTARA (KKMM.400-11/17/132(1))





PROJEK PENYEDIAAN DAN PENYELENGGARAAN POINT OF PRESENSE (POP) FASA 2: HUB INFRASTRUKTUR GENTIAN OPTIK BERHAMPIRAN DENGAN SEKOLAH, KAWASAN PERINDUSTRIAN, PREMIS KERAJAAN DAN KOMUNITI SEKITARNYA OLEH KEMENTERIAN KOMUNIKASI MALAYSIA - ZON UTARA (KKMM.400-11/17/132(1))





PROJEK PENYEDIAAN DAN PENYELENGGARAAN POINT OF PRESENSE (POP) FASA 2: HUB INFRASTRUKTUR GENTIAN OPTIK BERHAMPIRAN DENGAN SEKOLAH, KAWASAN PERINDUSTRIAN, PREMIS KERAJAAN DAN KOMUNITI SEKITARNYA OLEH KEMENTERIAN KOMUNIKASI MALAYSIA - ZON UTARA (KKMM.400-11/17/132(1))



3rd Parties Dependencies

No.	Local Council/ Authority	Remark
1	Majlis Perbandaran Kampar	
2		
3		
4		
5		
6		



LEGEND	NOS.	NOS.	NOS.	NOS.	NOS.	NOS.	NOS.	NOS.	NOS.			
	12C FOC	Installed 1:4 / 1:8 / 1:32 splitter		Installed Pole (9m)		Suspension		New Manhole (PIT)		Micro-Trenching (Meter)		MH NO.
	24C FOC	2797 Installed Patch Cord		Installed Pole (7.5M)	90	T	Tension			Temporary Infra (Meter)		Existing TNB Pole NO.
	48C FOC		1 FDC		Installed Pole (6.7M)		Pole Ring			Loop / Coil (Meter)		New Pole NO.
	96C FOC		4 Closure		Existing TNB Pole		FDP with (1:8) splitter			Active Outdoor Cabinet		Closure NO.
	144C FOC		Existing Closure		Installed Riser		Existing Manhole			FDC NO.		FDP NO.

ACTUAL HOMEPASS :

<p>KEY PLAN :</p> <p>POP2 PROJECT IN PERAK</p>	<p>OWNER/DEVELOPOR :</p> <p>APEX COMMUNICATIONS SDN BHD 12th FLOOR, MENARA HAP SENG, 50250 JALAN P. RAMLEE KUALA LUMPUR</p>	<p>WCWL COMMUNICATIONS SDN BHD 127, JALAN PUJI 3/3, TAMAN PUNCAK JALIL, BANDAR PUTRA PERMAI, 43300 SERI KEMBANGAN, SELANGOR TEL: +603 8888 5983 E-MAIL: info@wcwcommunications.com.my WEBSITE: https://wcwl.com.my</p>	<p>PROJECT TITLE :</p> <p>CONTRACTOR FOR SURVEY, TECHNICAL PROPOSAL AND WAYLEAVE, & PERMIT APPROVAL - POP2 PROJECT</p>	<p>DRAWING TITLE:</p> <p>AS - BUILT DRAWING SITE PLAN DRAWING AEE9003 SEKOLAH KEBANGSAAN MALIM NAWAR</p>	<p>Design By : ENGINEER</p>	<p>Date : NOV 2024</p>
					<p>Drawn By : ENGINEER</p>	<p>Scale : NOT TO SCALE</p>
<p>PROJECT PHASE: POP 2</p>					<p>Checked By : ENGINEER</p>	<p>Job Number :</p>
<p>DRAWING NUMBER : AEE9003 - ABD - 01</p>					<p>Sheet : 1/1</p>	<p>THIS PRINT AND ITS COPYRIGHT ARE THE PROPERTY OF APEX COMMUNICATIONS SDN BHD</p>
					<p>Size : A3</p>	