

## TECHNICAL PROPOSAL

### POP2 ABCA001 SEKOLAH JENIS KEBANGSAAN (CINA) HO PIN (D-SIDE)

Company Name	:	STEADCOM SDN BHD
Company Address	:	11-3, Jalan Puteri 2/6, Bandar Puteri, 47100 Puchong, Selangor
Prepared By	:	Fariz Aizat
Date	:	19/11/2024



**POINT A**

**POINT B**

**Starting Point**

Site / Boundary Name	:	SEKOLAH JENIS KEBANGSAAN (CINA) HO PIN
Address	:	Jalan Kg Lintah Piong, Kg Baharu, 35800 Slim River, Perak.
District	:	Slim River
Postcode	:	35800
State	:	Perak
GPS Coordinate	:	3.850739, 101.479034
LRD	:	A

**End Point**

Site / Boundary Name	:	SEKOLAH JENIS KEBANGSAAN (CINA) HO PIN
Address	:	Jalan Kg Lintah Piong, Kg Lintah Piong, 35800 Slim River, Perak.
District	:	Slim River
Postcode	:	35800
State	:	Perak
GPS Coordinate	:	3.862504, 101.493344
LRD	:	B

### Work Summary

No	Proposed Distance and Method	Unit	Qty
1	Horizontal Directional Drilling (HDD)	m	0
2	Carriage Way Open trench (CW)	m	0
3	Grass Verge Open Trenching (GV)	m	0
4	Micro trenching (MT)	m	0
	Total		0

	Other Information	Unit	Qty
1	Proposed Manhole	EA	0
2	Proposed Pole	EA	80
3	Joint Closure	EA	2
4	Estimated time required for completion	days	30

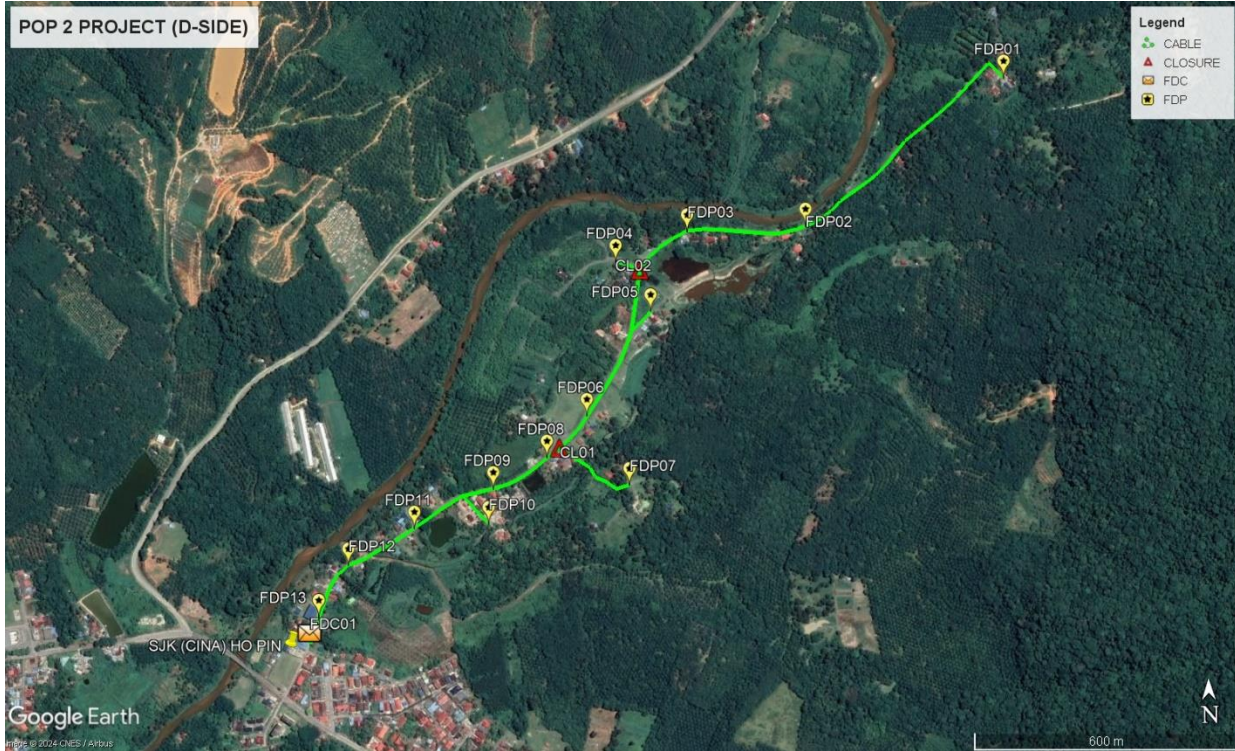
### Local Authority Summary

1. Daerah Tanjong Malim

Bil	Items	Owner	Quantity	Distance(m)
1	HDD	JKR	-	-
		Majlis	-	-
		Estate / Private Land	-	-
2	New Pole	JKR	-	-
		Majlis	80PCS	2685m
		Estate / Private Land	-	-
3	Existing TNB Pole	JKR	-	-
		Majlis	-	-
		Estate / Private Land	-	-
Total				2685m

**Site Plan – KMZ (Overview site area)**

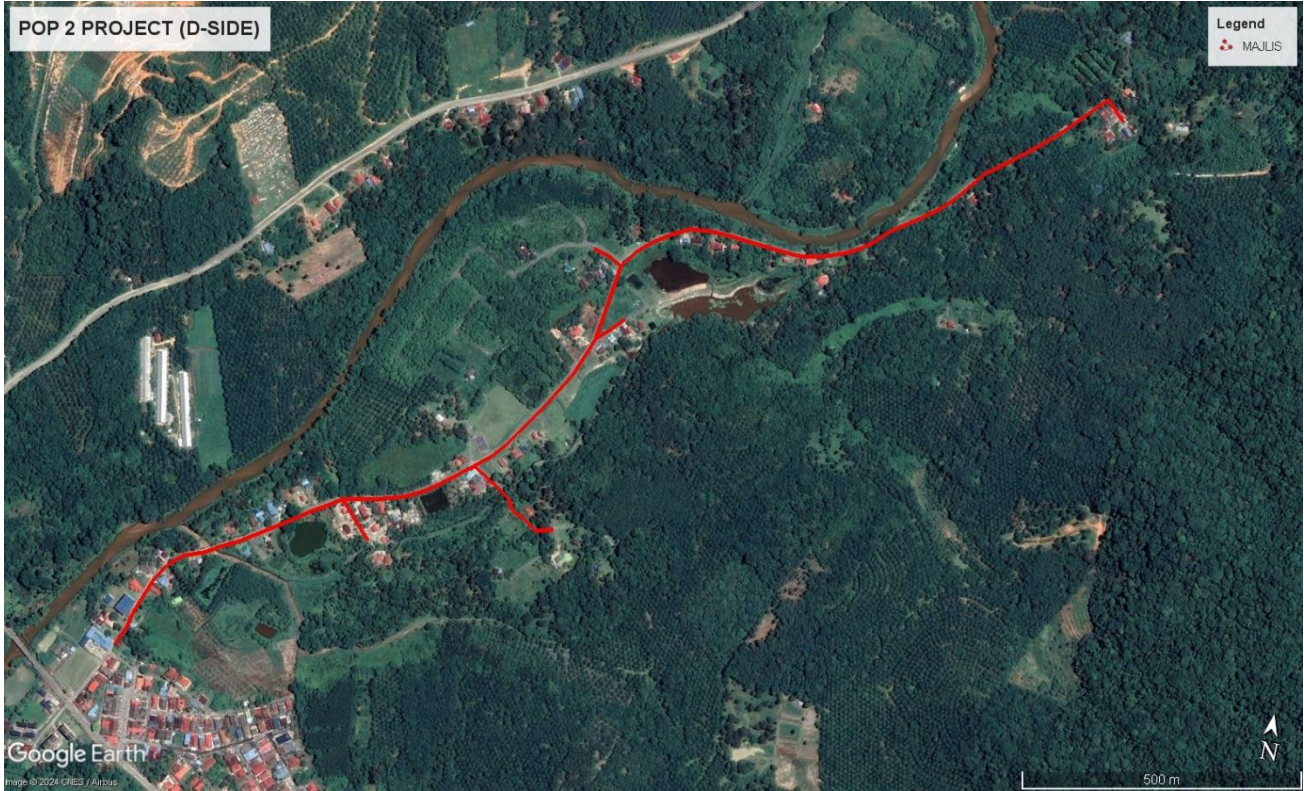
**Proposed FDP and Closure**



**Proposed New Pole**



**Site Plan – KMZ Routing (All Local Authority)**

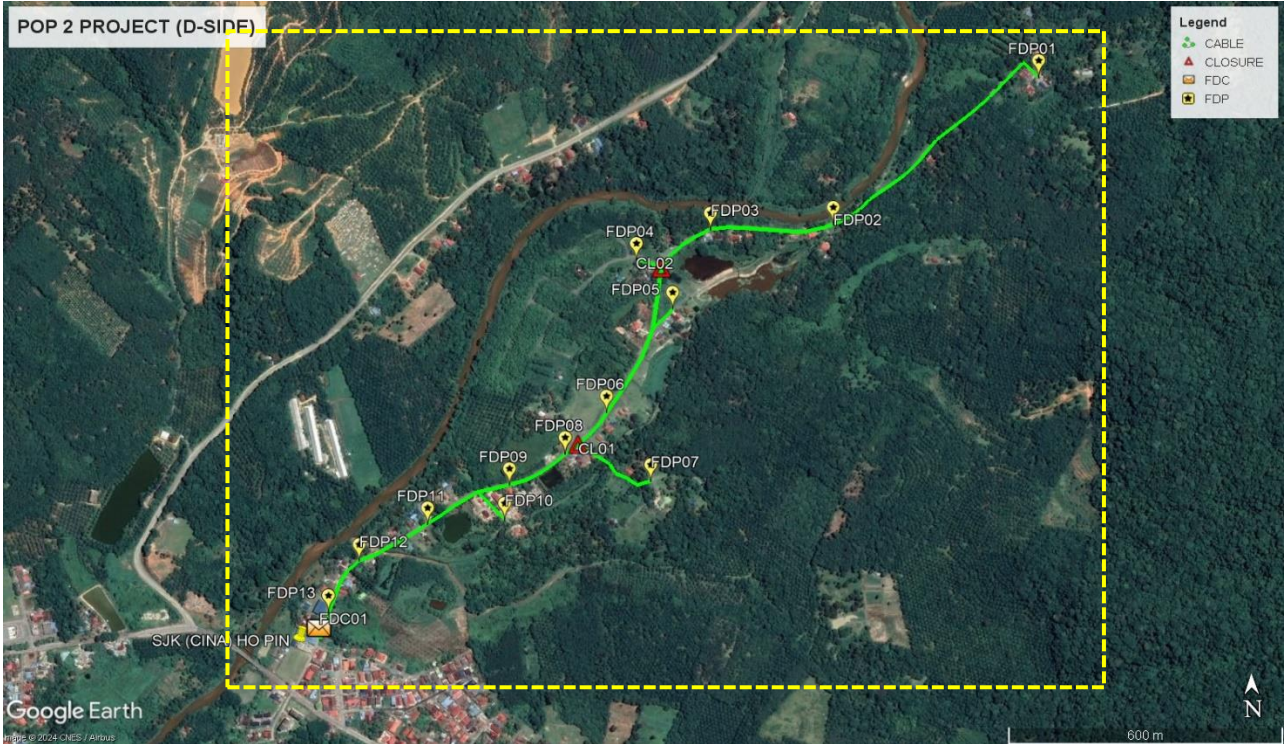


**Green Colour – JKR**

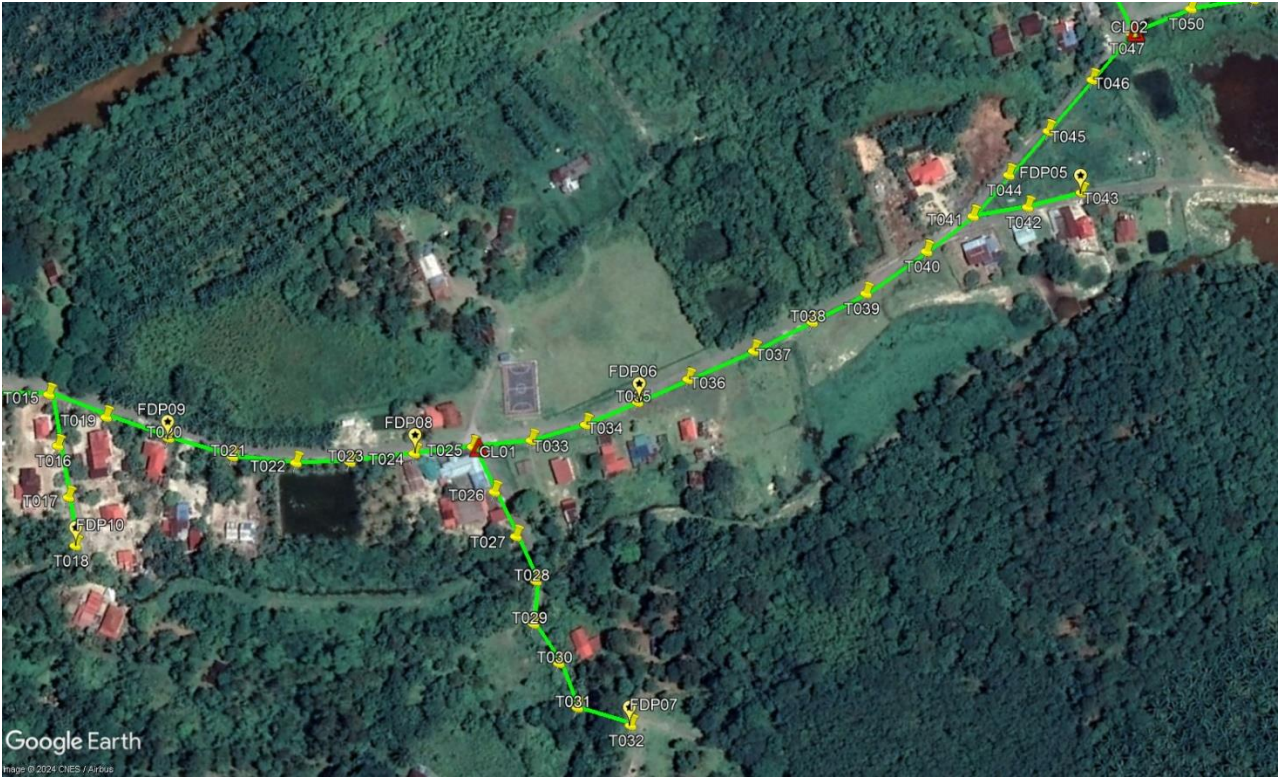
**Red Colour – Majlis Daerah Tanjong Malim**

Site Plan – KMZ Routing (All site area)

Route 1



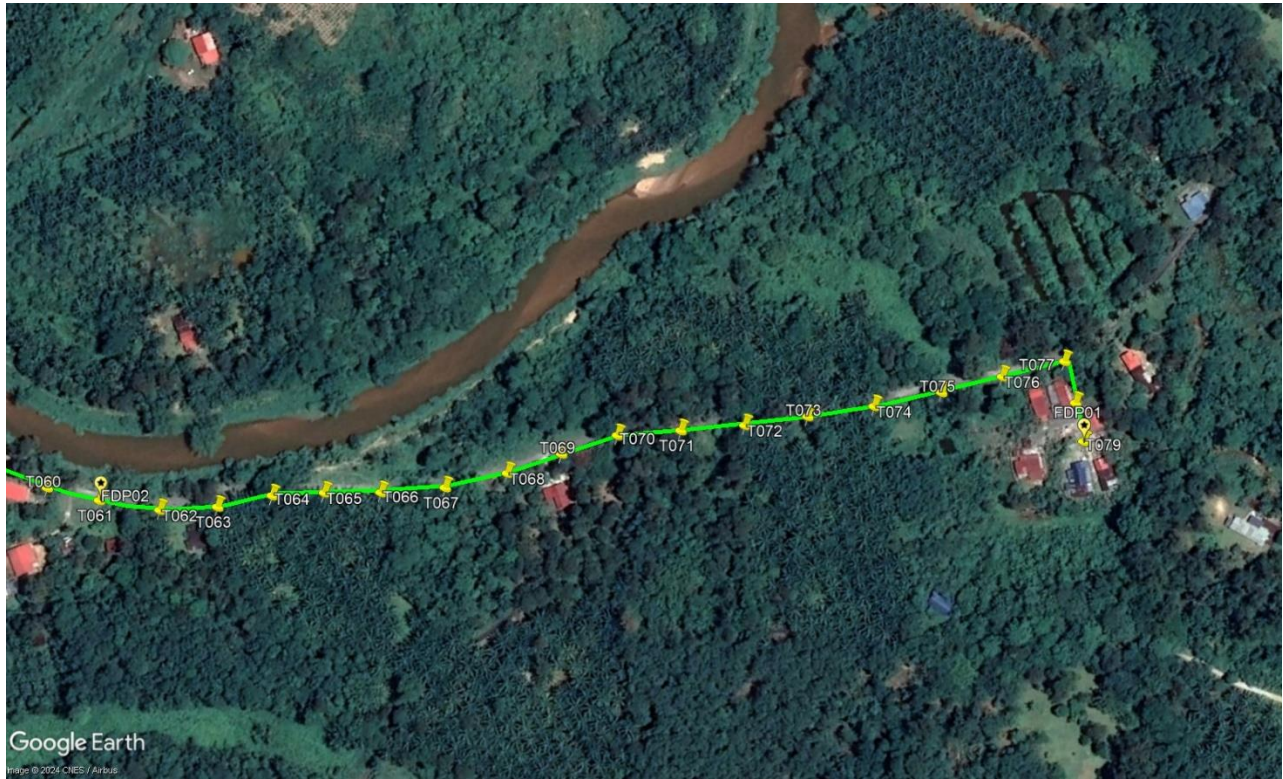
Route 1.1



**Route 1.2**



**Route 1.3**



**Route 1.4**

**Site Plan – KMZ Routing (Proposed new Pole)**



**Proposed New Pole Lat & Long Table**

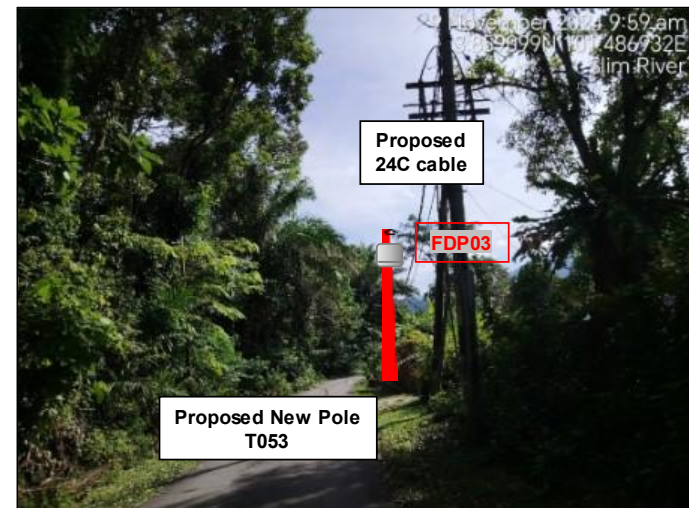
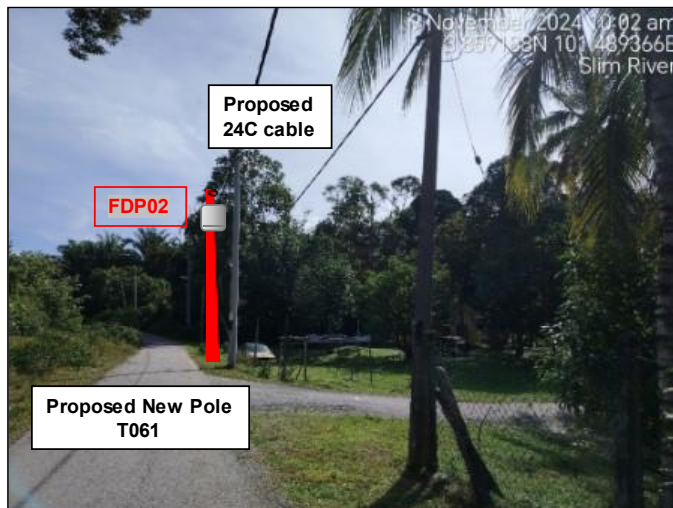
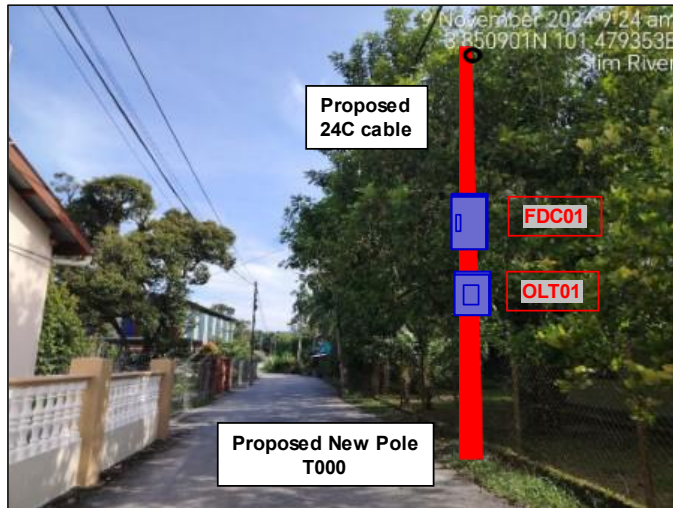
No.	Label	Pole & Manhole ID	Latitude	Longitude	Local Authority
1	OLT / FDC	T000	3.850962	101.479349	MAJLIS DAERAH TANJONG MALIM
2	FDP01	T079	3.862245	101.493658	MAJLIS DAERAH TANJONG MALIM
3	FDP02	T061	3.859302	101.489574	MAJLIS DAERAH TANJONG MALIM
4	FDP03	T053	3.859235	101.487169	MAJLIS DAERAH TANJONG MALIM
5	FDP04	T049	3.858636	101.485696	MAJLIS DAERAH TANJONG MALIM
6	FDP05	T043	3.857623	101.486401	MAJLIS DAERAH TANJONG MALIM
7	FDP06	T035	3.855509	101.485060	MAJLIS DAERAH TANJONG MALIM
8	FDP07	T032	3.854101	101.485915	MAJLIS DAERAH TANJONG MALIM
9	FDP08	T024	3.854679	101.484238	MAJLIS DAERAH TANJONG MALIM
10	FDP09	T020	3.854073	101.483135	MAJLIS DAERAH TANJONG MALIM
11	FDP10	T018	3.853356	101.483028	MAJLIS DAERAH TANJONG MALIM
12	FDP11	T011	3.853293	101.481504	MAJLIS DAERAH TANJONG MALIM
13	FDP12	T006	3.852575	101.480164	MAJLIS DAERAH TANJONG MALIM
14	FDP13	T002	3.851534	101.479542	MAJLIS DAERAH TANJONG MALIM
15	CL01	T025	3.854867	101.484471	MAJLIS DAERAH TANJONG MALIM
16	CL02	T051	3.858444	101.486180	MAJLIS DAERAH TANJONG MALIM

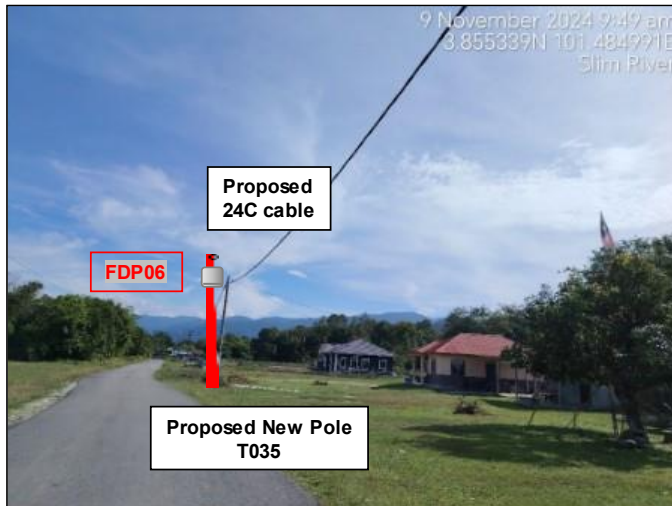
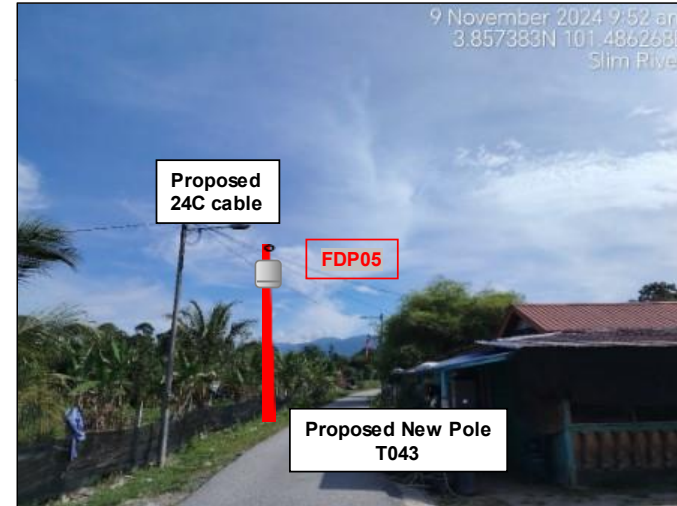
**Overall Pole (Proposed New)**

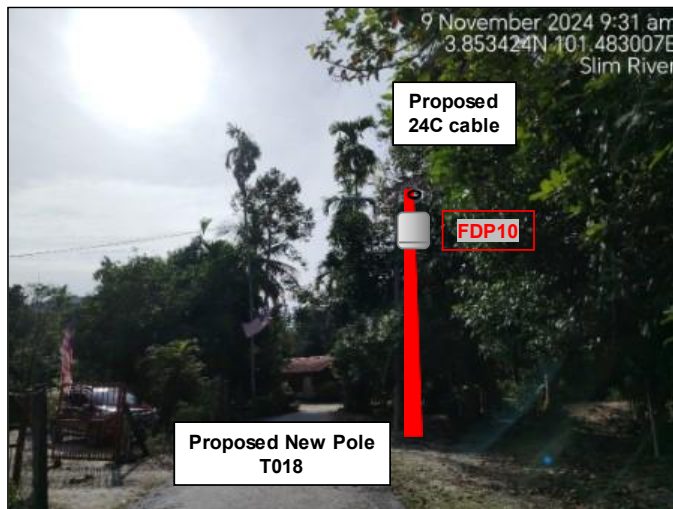
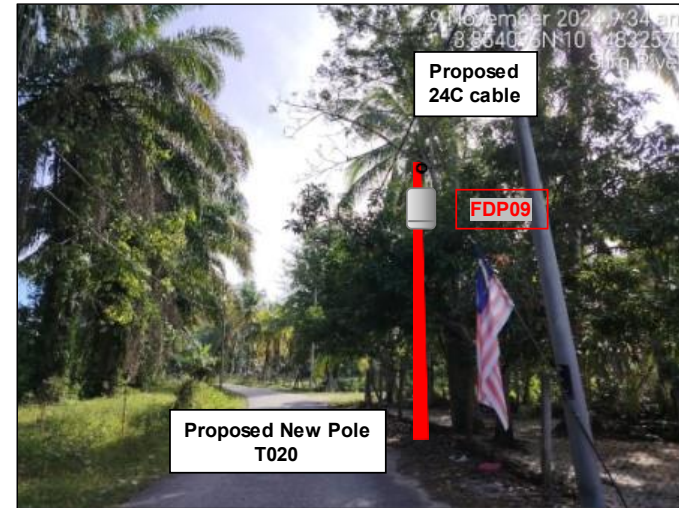
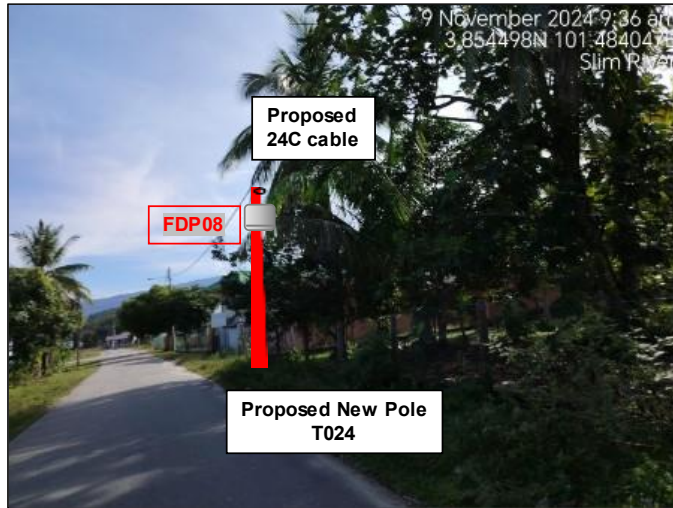
No.	Pole & Manhole ID	Distance	Latitude	Longitude	Local Authority
1	T000	0	3.850962	101.479349	MAJLIS DAERAH TANJONG MALIM
2	T001	35	3.851270	101.479482	MAJLIS DAERAH TANJONG MALIM
3	T002	35	3.851534	101.479542	MAJLIS DAERAH TANJONG MALIM
4	T003	35	3.851789	101.479636	MAJLIS DAERAH TANJONG MALIM
5	T004	35	3.852106	101.479770	MAJLIS DAERAH TANJONG MALIM
6	T005	35	3.852362	101.479936	MAJLIS DAERAH TANJONG MALIM
7	T006	35	3.852575	101.480164	MAJLIS DAERAH TANJONG MALIM
8	T007	35	3.852676	101.480471	MAJLIS DAERAH TANJONG MALIM
9	T008	35	3.852828	101.480717	MAJLIS DAERAH TANJONG MALIM
10	T009	30	3.852967	101.480996	MAJLIS DAERAH TANJONG MALIM
11	T010	35	3.853119	101.481233	MAJLIS DAERAH TANJONG MALIM
12	T011	35	3.853293	101.481504	MAJLIS DAERAH TANJONG MALIM
13	T012	35	3.853452	101.481746	MAJLIS DAERAH TANJONG MALIM
14	T013	35	3.853633	101.482009	MAJLIS DAERAH TANJONG MALIM
15	T014	35	3.853784	101.482264	MAJLIS DAERAH TANJONG MALIM
16	T015	35	3.853934	101.482500	MAJLIS DAERAH TANJONG MALIM
17	T016	30	3.853738	101.482679	MAJLIS DAERAH TANJONG MALIM
18	T017	30	3.853545	101.482866	MAJLIS DAERAH TANJONG MALIM
19	T018	30	3.853356	101.483028	MAJLIS DAERAH TANJONG MALIM
20	T019	35	3.853993	101.482809	MAJLIS DAERAH TANJONG MALIM
21	T020	35	3.854073	101.483135	MAJLIS DAERAH TANJONG MALIM
22	T021	35	3.854169	101.483462	MAJLIS DAERAH TANJONG MALIM
23	T022	35	3.854316	101.483752	MAJLIS DAERAH TANJONG MALIM
24	T023	35	3.854466	101.483983	MAJLIS DAERAH TANJONG MALIM
25	T024	35	3.854679	101.484238	MAJLIS DAERAH TANJONG MALIM
26	T025	35	3.854867	101.484471	MAJLIS DAERAH TANJONG MALIM
27	T026	30	3.854733	101.484688	MAJLIS DAERAH TANJONG MALIM
28	T027	30	3.854600	101.484903	MAJLIS DAERAH TANJONG MALIM
29	T028	30	3.854463	101.485112	MAJLIS DAERAH TANJONG MALIM
30	T029	30	3.854273	101.485219	MAJLIS DAERAH TANJONG MALIM
31	T030	30	3.854172	101.485435	MAJLIS DAERAH TANJONG MALIM
32	T031	30	3.854032	101.485636	MAJLIS DAERAH TANJONG MALIM
33	T032	30	3.854101	101.485915	MAJLIS DAERAH TANJONG MALIM
34	T033	35	3.855055	101.484707	MAJLIS DAERAH TANJONG MALIM
35	T034	35	3.855271	101.484898	MAJLIS DAERAH TANJONG MALIM
36	T035	35	3.855509	101.485060	MAJLIS DAERAH TANJONG MALIM
37	T036	35	3.855746	101.485216	MAJLIS DAERAH TANJONG MALIM
38	T037	35	3.856047	101.485422	MAJLIS DAERAH TANJONG MALIM
39	T038	35	3.856331	101.485594	MAJLIS DAERAH TANJONG MALIM
40	T039	35	3.856601	101.485748	MAJLIS DAERAH TANJONG MALIM

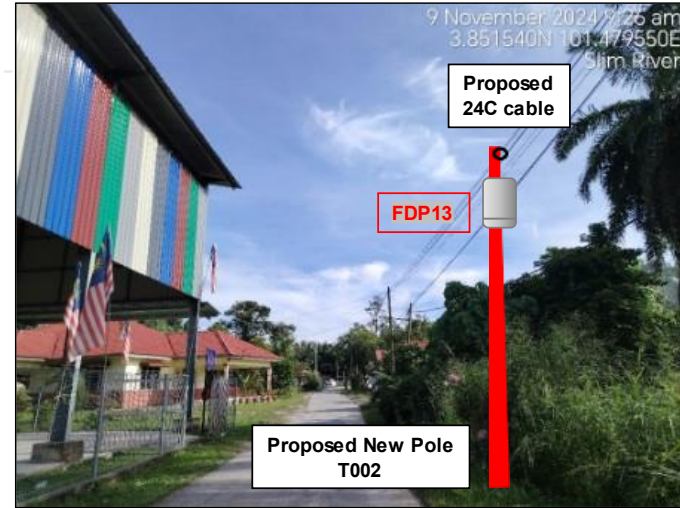
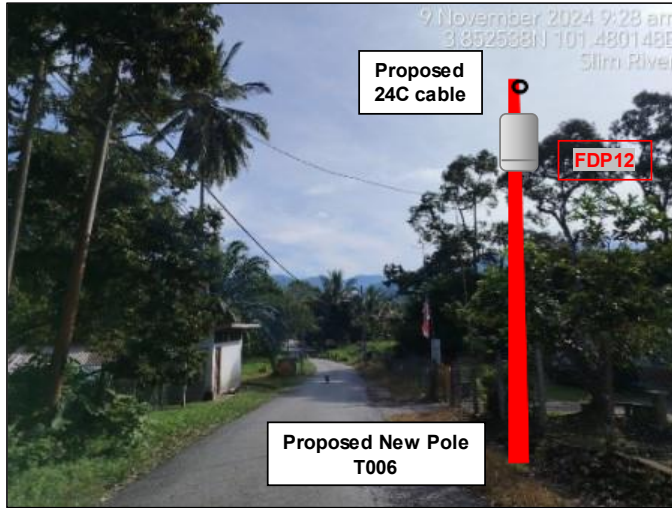
41	T040	35	3.856947	101.485894	MAJLIS DAERAH TANJONG MALIM
42	T041	35	3.857226	101.485998	MAJLIS DAERAH TANJONG MALIM
43	T042	35	3.857414	101.486209	MAJLIS DAERAH TANJONG MALIM
44	T043	35	3.857623	101.486401	MAJLIS DAERAH TANJONG MALIM
45	T044	35	3.857501	101.486039	MAJLIS DAERAH TANJONG MALIM
46	T045	35	3.857798	101.486090	MAJLIS DAERAH TANJONG MALIM
47	T046	35	3.858138	101.486139	MAJLIS DAERAH TANJONG MALIM
48	T047	35	3.858444	101.486180	MAJLIS DAERAH TANJONG MALIM
49	T048	35	3.858578	101.485953	MAJLIS DAERAH TANJONG MALIM
50	T049	30	3.858636	101.485696	MAJLIS DAERAH TANJONG MALIM
51	T050	35	3.858713	101.486369	MAJLIS DAERAH TANJONG MALIM
52	T051	35	3.858924	101.486613	MAJLIS DAERAH TANJONG MALIM
53	T052	35	3.859083	101.486870	MAJLIS DAERAH TANJONG MALIM
54	T053	35	3.859235	101.487169	MAJLIS DAERAH TANJONG MALIM
55	T054	35	3.859271	101.487498	MAJLIS DAERAH TANJONG MALIM
56	T055	35	3.859237	101.487809	MAJLIS DAERAH TANJONG MALIM
57	T056	35	3.859233	101.488106	MAJLIS DAERAH TANJONG MALIM
58	T057	35	3.859210	101.488389	MAJLIS DAERAH TANJONG MALIM
59	T058	35	3.859160	101.488695	MAJLIS DAERAH TANJONG MALIM
60	T059	35	3.859155	101.489006	MAJLIS DAERAH TANJONG MALIM
61	T060	35	3.859214	101.489315	MAJLIS DAERAH TANJONG MALIM
62	T061	35	3.859302	101.489574	MAJLIS DAERAH TANJONG MALIM
63	T062	35	3.859426	101.489862	MAJLIS DAERAH TANJONG MALIM
64	T063	35	3.859597	101.490102	MAJLIS DAERAH TANJONG MALIM
65	T064	35	3.859795	101.490307	MAJLIS DAERAH TANJONG MALIM
66	T065	35	3.859950	101.490524	MAJLIS DAERAH TANJONG MALIM
67	T066	35	3.860106	101.490767	MAJLIS DAERAH TANJONG MALIM
68	T067	35	3.860302	101.491031	MAJLIS DAERAH TANJONG MALIM
69	T068	35	3.860534	101.491260	MAJLIS DAERAH TANJONG MALIM
70	T069	35	3.860765	101.491440	MAJLIS DAERAH TANJONG MALIM
71	T070	35	3.860998	101.491631	MAJLIS DAERAH TANJONG MALIM
72	T071	35	3.861192	101.491891	MAJLIS DAERAH TANJONG MALIM
73	T072	35	3.861389	101.492153	MAJLIS DAERAH TANJONG MALIM
74	T073	35	3.861599	101.492399	MAJLIS DAERAH TANJONG MALIM
75	T074	35	3.861824	101.492659	MAJLIS DAERAH TANJONG MALIM
76	T075	35	3.862068	101.492911	MAJLIS DAERAH TANJONG MALIM
77	T076	35	3.862302	101.493130	MAJLIS DAERAH TANJONG MALIM
78	T077	35	3.862538	101.493357	MAJLIS DAERAH TANJONG MALIM
79	T078	25	3.862389	101.493518	MAJLIS DAERAH TANJONG MALIM
80	T079	25	3.862245	101.493658	MAJLIS DAERAH TANJONG MALIM

**Site Photos – Proposed to install pole**









3rd Parties Dependencies

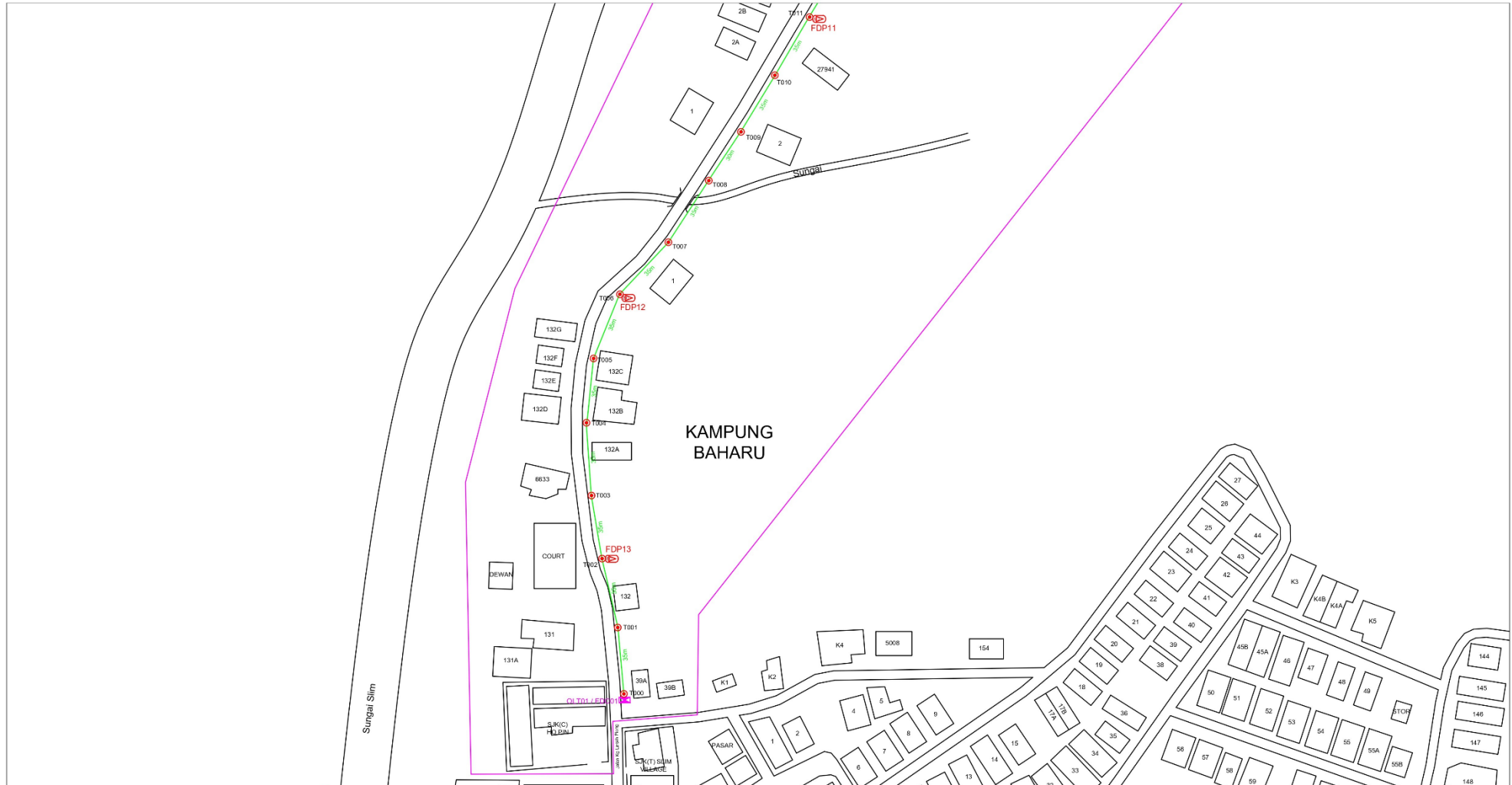
No.	Local Council/ Authority	Remark
1	Majlis Daerah Tanjong Malim	
2		
3		
4		
5		
6		



12C FOC	Installed 1:4 / 1:8 / 1:32 splitter	Installed Pole (9m)	Suspension	80	New Manhole (M)	Micro-Trenching (Meter)	MH1	MH NO.	
24C FOC	Installed Patch Cord	Installed Pole (7.5M)	Tension	155	New Manhole (URC/)	Temporary Intro (Meter)	TKS-1	Existing TNB Pole NO.	
48C FOC	FDC	Installed Pole (6.7M)	Pole Ring	1.3	FDP Boundary	Loops / Coil (Meter)	PO1	New Pole NO.	
96C FOC	Closure	Existing TNB Pole	FDP with (1:8) splitter	1.3	HDD (Meter)	Active Outdoor Cabinet	CL01	Closure NO.	
144C FOC	Existing Closure	Installed Riser	Existing Manhole		Open Cut (Meter)	CO1	FDC NO.	DPI	FDP NO.

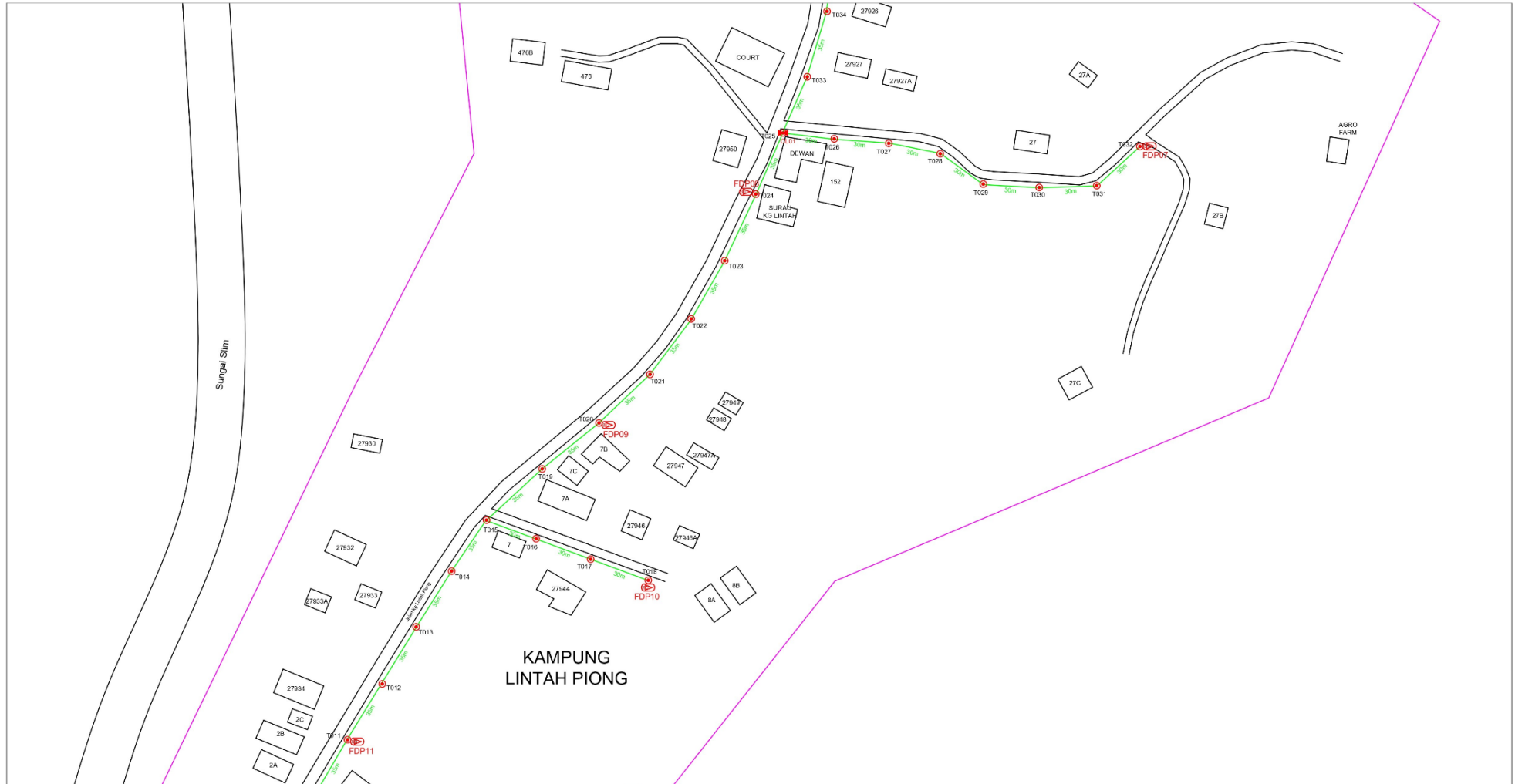
ACTUAL HOMEPASS :

KEY PLAN:	PROJECT OWNER: <b>APEX</b> COMMUNICATIONS SDN BHD 187475-W <b>PRIVASAT</b>	MAIN CONTRACTOR: <b>STEADCOM</b> A member of OCK Group Berhad	SUB-CONTRACTOR:	PROJECT TITLE: CONTRACTOR FOR SURVEY, TECHNICAL PROPOSAL AND WAYLEAVE & PERMIT APPROVAL - POP2 PROJECT	DRAWING TITLE: Construction Drawing ABCA001 SJK (CINA) HO PIN	Design By : Date : <b>19/11/2024</b>
						Scale : <b>NTS</b>
						Checked By : Job Number : <b>JOB/NUMBER</b>
					PROJECT PHASE: <b>POP 2</b>	DRAWING NUMBER : <b>ABCA001-CD-01</b> Sheet : <b>1/7</b>
						THIS PRINT AND ITS COPYRIGHT ARE THE PROPERTY OF STEADCOM SDN BHD Size : <b>A3</b>



12C FOC	Installed 1:4 / 1:8 / 1:32 splitter	Installed Pole (9m)	Suspension	80	New Manhole (R/C)	Micro-Trenching (Meter)	MHT	NH NO.
24C FOC	2925m Installed Patch Cord	Installed Pole (7.5M)	Tension	150	New Manhole (R/C)	Temporary Infra (Meter)	TKB-1	Existing TNB Pole NO.
48C FOC	TJC	Installed Pole (6.7M)	Pole Ring	13	1/2" Boundary	Loop / Cut (Meter)	PO01	New Pole NO.
96C FOC	Closure	Existing TNB Pole	FDP with (1:8) splitter	13	HBD (Meter)	Active Outdoor Cabinet	CL01	Closure NO.
144C FOC	Existing Closure	Installed Riser	Existing Manhole		Open Cut (Meter)	FDC NO.	DPI	11WP NO.

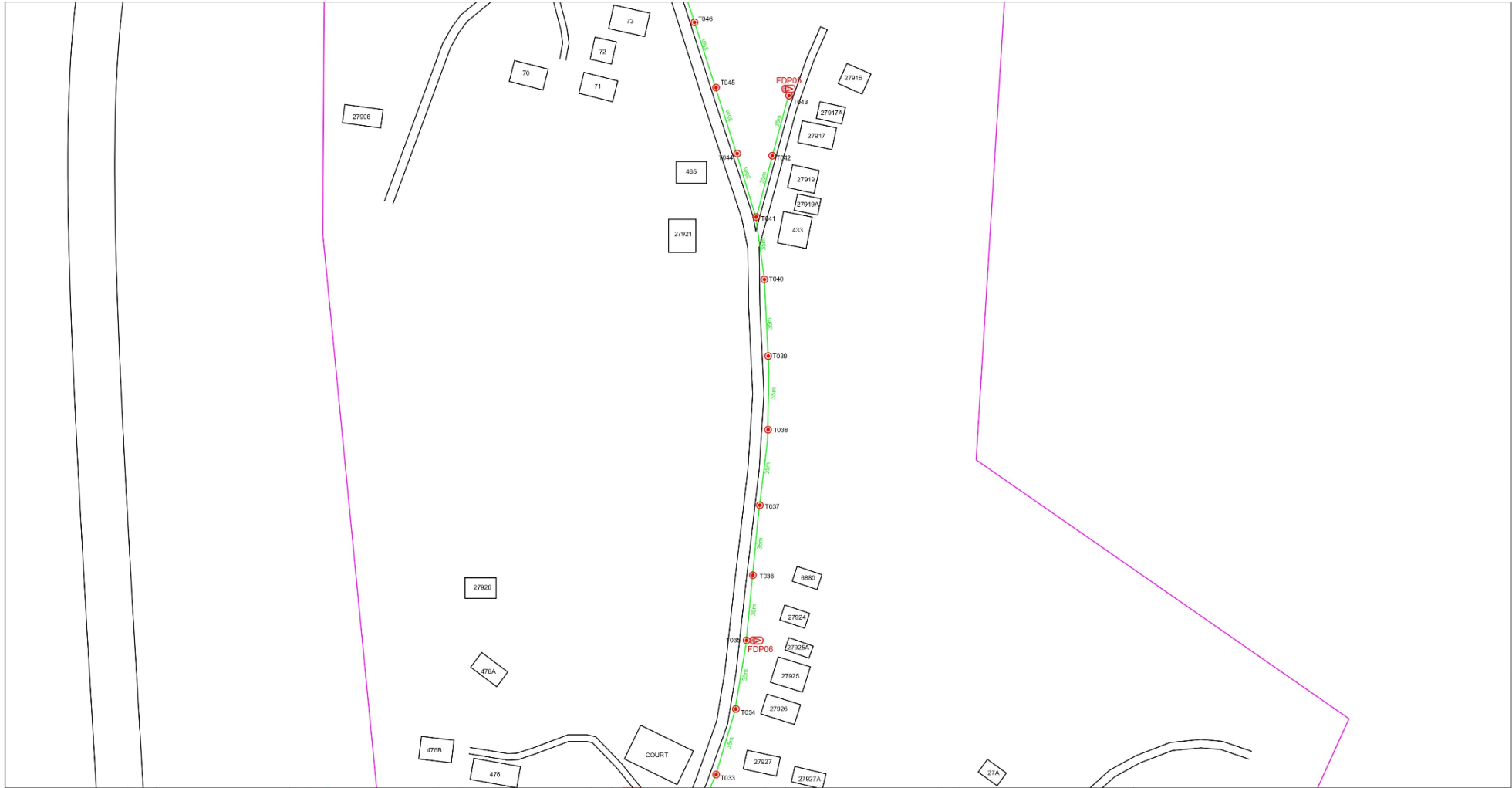
KEY PLAN:	PROJECT OWNER: <b>APEX</b> COMMUNICATIONS SDN BHD 187475-V <b>PRIVASAT</b>	MAIN CONTRACTOR: <b>STEADCOM</b> A member of OCK Group Berhad	SUB-CONTRACTOR:	PROJECT TITLE: CONTRACTOR FOR SURVEY, TECHNICAL PROPOSAL AND WAYLEAVE & PERMIT APPROVAL - POP2 PROJECT	DRAWING TITLE: Construction Drawing ABCA001 SJK (CINA) HO PIN	Design By : Drawn By : Checked By :	Date : Scale : Job Number :
					PROJECT PHASE: POP 2	DRAWING NUMBER : ABCA001-CD-01	Sheet : 2/7
						THIS PRINT AND ITS COPYRIGHT ARE THE PROPERTY OF STEADCOM SDN BHD	



12C FOC	Installed 1/4 / 1/6 / 1/32 splitter	Installed Pole (9m)	Suspension	80	New Manhole (PIT)	Micro-Trenching (Meter)	MHI	MH NO.
24C FOC	Installed Patch Cord	Installed Pole (7.5M)	Tension	155	New Manhole(JRC7)	Temporary infra (Meter)	TKS-1	Existing INB Pole NO.
48C FOC	FOC	Installed Pole (6.7M)	Pole Ring	13	FDP Boundary	Loop / Coil (Meter)	PO01	New Pole NO.
96C FOC	Closure	Existing INB Fule	FDP with (1:8) splitter	13	HDD (Meter)	Active Outdoor Cabinet	CL01	Closure NO.
144C FOC	Existing Closure	Installed Riser	Existing Manhole		Open Out (Meter)	FOC NO.	DP1	FDP NO.

ACTUAL HOMEPASS :

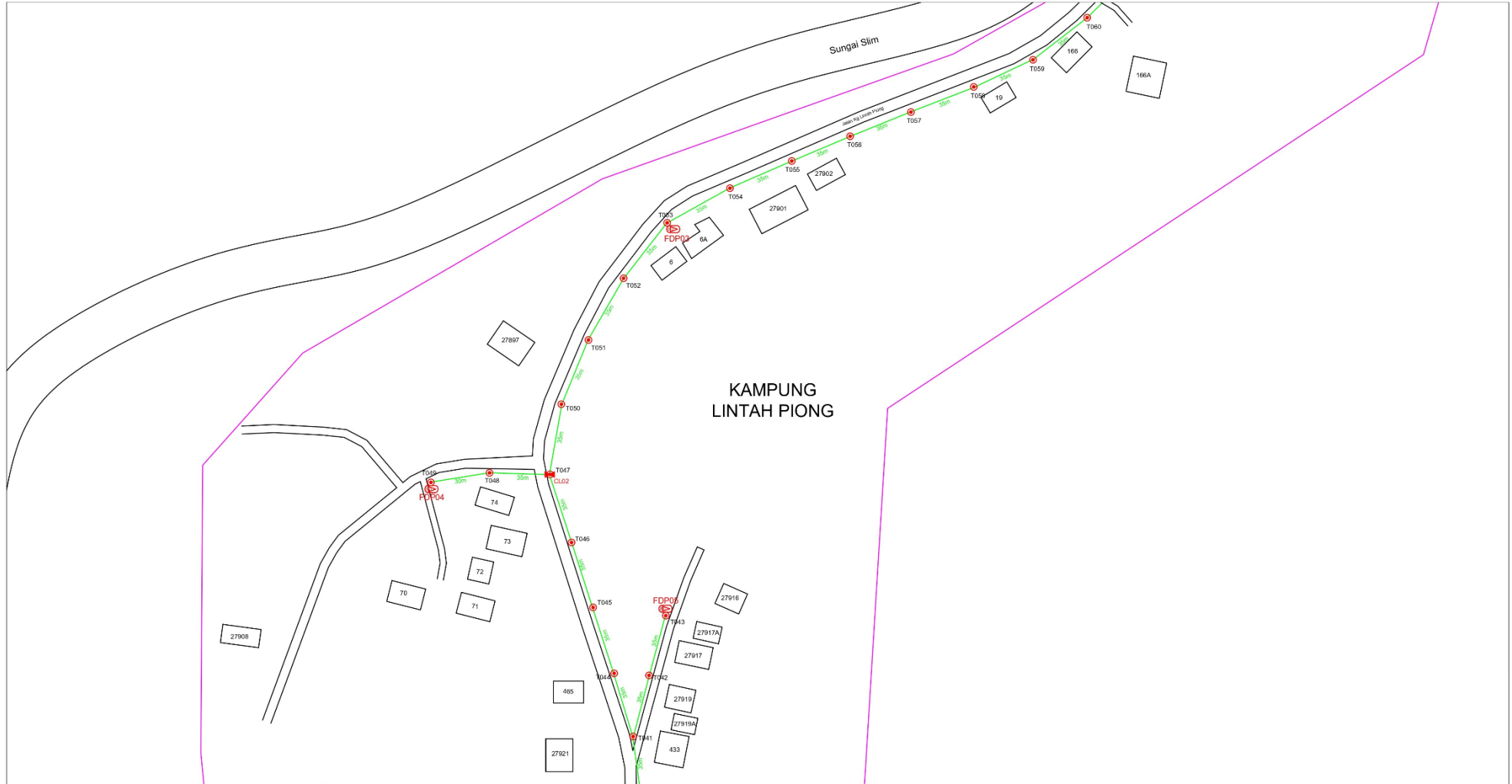
KEY PLAN:	PROJECT OWNER: <b>APEX</b> COMMUNICATIONS SDN BHD 187475-1 <b>PRIVASAT</b>	MAIN CONTRACTOR: <b>STEADCOM</b> A member of OCK Group Berhad	SUB-CONTRACTOR:	PROJECT TITLE: CONTRACTOR FOR SURVEY, TECHNICAL PROPOSAL AND WAYLEAVE & PERMIT APPROVAL -POP2 PROJECT	DRAWING TITLE: Construction Drawing ABCA001 SJK (CINA) HO PIN	Design By : Date : 19/11/2024
					PROJECT PHASE: POP 2	Scale : NTS
						Job Number : JOB/NUMBER
						Sheet : 3/7
						THIS PRINT AND ITS COPYRIGHT ARE THE PROPERTY OF STEADCOM SDN BHD
						Size : A3



12C FOC	Installed 1:4 / 1:8 / 1:32 splitter	Installed Pole (9m)	Suspension	80	New Manhole (PIT)	Micro-Trenching (Meter)	MH1	MH NO.
24C FOC	Installed Patch Cord	Installed Pole (7.5M)	Tension	155	New Manhole (JRC7)	Temporary infra (Meter)	TKS-1	Existing TNB Pole NO.
48C FOC	FOC	Installed Pole (6.7M)	Pole Ring	13	FDP Boundary	Loop / Coil (Meter)	PO01	New Pole NO.
96C FOC	Closure	Existing TNB Pole	FDP with (1:8) splitter	13	HDD (Meter)	Active Outdoor Cabinet	CL01	Closure NO.
144C FOC	Existing Closure	Installed Riser	Existing Manhole		Open Cut (Meter)	FOC NO.	DP1	FDP NO.

ACTUAL HOMEPASS :

KEY PLAN:	PROJECT OWNER: <b>APEX</b> COMMUNICATIONS SDN BHD 187475-V <b>PRIVASAT</b>	MAIN CONTRACTOR: <b>STEADCOM</b> A member of OCK Group Berhad	SUB-CONTRACTOR:	PROJECT TITLE: CONTRACTOR FOR SURVEY, TECHNICAL PROPOSAL AND WAYLEAVE & PERMIT APPROVAL -POP2 PROJECT	DRAWING TITLE: Construction Drawing ABCA001 SJK (CINA) HO PIN	Design By : Date : 19/11/2024
				PROJECT PHASE: POP 2		Drawn By : Scale : NTS
						Checked By : Job Number : JOB/NUMBER
						DRAWING NUMBER : ABCA001-CD-01
						Sheet : 4/7
						THIS PRINT AND ITS COPYRIGHT ARE THE PROPERTY OF STEADCOM SDN BHD. Size : A3



ACTUAL HOMEPASS :



12C FDC	Installed 1-4 / 1-8 / 1-32 splitter	Installed Pole (9m)	Suspension	80	New Manhole (RT)	Micro-Trenching (Meter)	MH1	MH NO.
24C FDC	2925m Installed Patch Cord	Installed Pole (7.5M)	Tension	150	New Manhole(LRT/L)	Temporary Intro (Meter)	TKS-1	Existing TNB Pole NO.
48C FDC	FDC	Installed Pole (6.7M)	Pole Ring	13	I.W.P. Boundary	Loop / Coil (Meter)	PO01	New Pole NO.
96C FDC	Closure	Existing TNB Pole	IDP with (1:8) splitter	13	HDO (Meter)	Active Outdoor Cabinet	CL01	Closure NO.
144C FDC	Existing Closure	Installed Riser	Existing Manhole		Open Cut (Meter)	FDC NO.	DP1	FDP NO.

ACTUAL HOMEPASS :

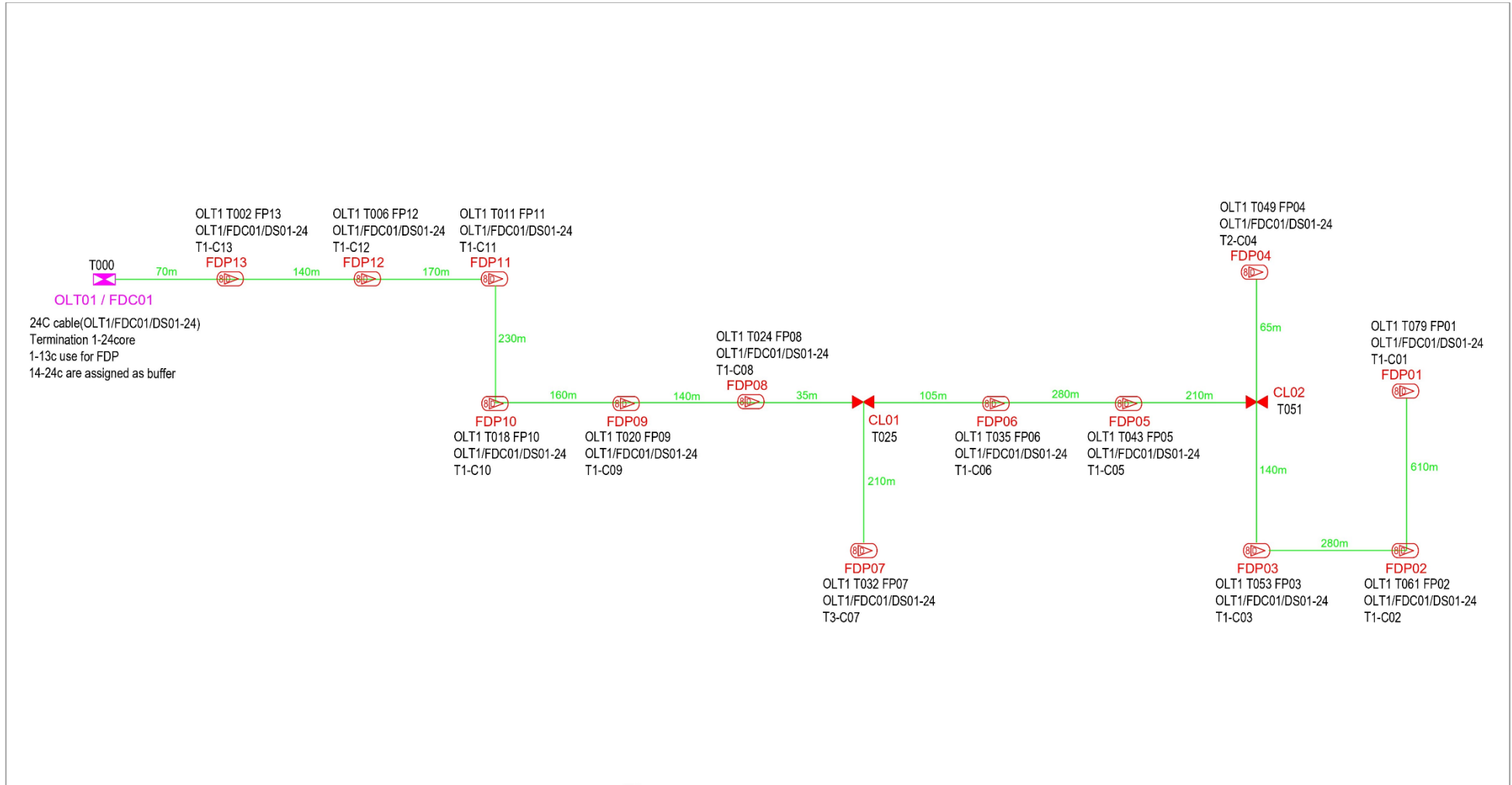
KEY PLAN:	PROJECT OWNER: <b>APEX</b> COMMUNICATIONS SDN BHD 187475-V <b>PRIVASAT</b>	MAIN CONTRACTOR: <b>STEADCOM</b> A member of OCK Group Berhad	SUB-CONTRACTOR:	PROJECT TITLE: CONTRACTOR FOR SURVEY, TECHNICAL PROPOSAL AND WAYLEAVE & PERMIT APPROVAL - POP2 PROJECT	DRAWING TITLE: Construction Drawing ABCA001 SJK (CINA) HO PIN PROJECT PHASE: POP 2	Design By : Date : 19/11/2024 Drawn By : Scale : NTS Checked By : Job Number : DRAWING NUMBER : ABCA001-CD-01 Sheet : 6/7 THIS PRINT AND ITS COPYRIGHT ARE THE PROPERTY OF STEADCOM SDN BHD Size : A3
-----------	--	---	-----------------	---	---	---



12C FOC	Installed 1:4 / 1:8 / 1:32 splitter	Installed Pole (9m)	Suspension	80	New Manhole (PIT)	Micro-Trenching (Meter)	MH1	MH NO.
24C FOC	Installed Patch Cord	Installed Pole (7.5M)	Tension	155	New Manhole(JRC7)	Temporary Infra (Meter)	TKS-1	Existing INB Pole NO.
48C FOC	FDC	Installed Pole (6.7M)	Pole Ring	13	FDP Boundary	Loop / Coil (Meter)	PO1	New Pole NO.
96C FOC	Closure	Existing TNB Pole	FDP with (1:8) splitter	13	HDI (Meter)	Active Outdoor Cabinet	CL01	Closure NO.
144C FOC	Existing Closure	Installed Riser	Existing Manhole		Open Cut (Meter)	FOC NO.	DP1	FDP NO.

ACTUAL HOMEPASS :

KEY PLAN:	PROJECT OWNER: <b>APEX</b> COMMUNICATIONS SDN BHD 1874753-V <b>PRIVASAT</b>	MAIN CONTRACTOR: <b>STEADCOM</b> A member of OCK Group Berhad	SUB-CONTRACTOR:	PROJECT TITLE: CONTRACTOR FOR SURVEY, TECHNICAL PROPOSAL AND WAYLEAVE & PERMIT APPROVAL -POP2 PROJECT	DRAWING TITLE: Construction Drawing ABCA001 SJK (CINA) HO PIN	Design By : Date : <b>19/11/2024</b>
					PROJECT PHASE: <b>POP 2</b>	Drawn By : Scale : <b>NTS</b>
						Checked By : Job Number : <b>JOB/NUMBER</b>
						Drawing Number : <b>ABCA001-CD-01</b>
						Sheet : <b>7/7</b>
						THIS PRINT AND ITS COPYRIGHT ARE THE PROPERTY OF STEADCOM SDN BHD. Size : <b>A3</b>



12C FOC	Installed 1:4 / 1:8 / 1:32 splitter	Installed Pole (9m)	Suspension	80	New Manhole (PT)	Micro-Trenching (Meter)	MH	MH NO.
24C FOC	Installed Patch Cord	Installed Pole (7.5M)	Tension	155	New Manhole(JRC7)	Temporary Infra (Meter)	TKS-1	Faithing INR Pole NO.
48C FOC	FDC	Installed Pole (6.7M)	Pole Ring	13	FDP Bounding	Loop / Coil (Meter)	PO01	New Pole NO.
96C FOC	Closure	Existing INR Pole	FDP with 1:8 splitter	13	HDD (Meter)	Active Outdoor Cabinet	CL01	Closure NO.
144C FOC	Existing Closure	Installed Riser	Existing Manhole	13	Open Cut (Meter)	FDC NO.	DPI	FDP NO.

ACTUAL HOWEPASS :

KEY PLAN:	PROJECT OWNER:  <b>PRIVASAT</b>	MAIN CONTRACTOR:  A member of OCK Group Berhad	SUB-CONTRACTOR:	PROJECT TITLE: CONTRACTOR FOR SURVEY, TECHNICAL PROPOSAL AND WAYLEAVE & PERMIT APPROVAL - POP2 PROJECT	DRAWING TITLE: SLD Drawing ABCA001 SJK (CINA) HO PIN	PROJECT PHASE: POP 2	Design By : Drawn By : Checked By : DRAWING NUMBER : ABCA001-CD-01	Date : 19/11/2024 Scale : NTS Job Number : JOB/NUMBER Sheet : 1/1 Size : A3
-----------	---------------------------------------	--	-----------------	---	---	-------------------------	--	--

THIS PRINT AND ITS COPYRIGHT ARE THE PROPERTY OF STEADCOM SDN BHD