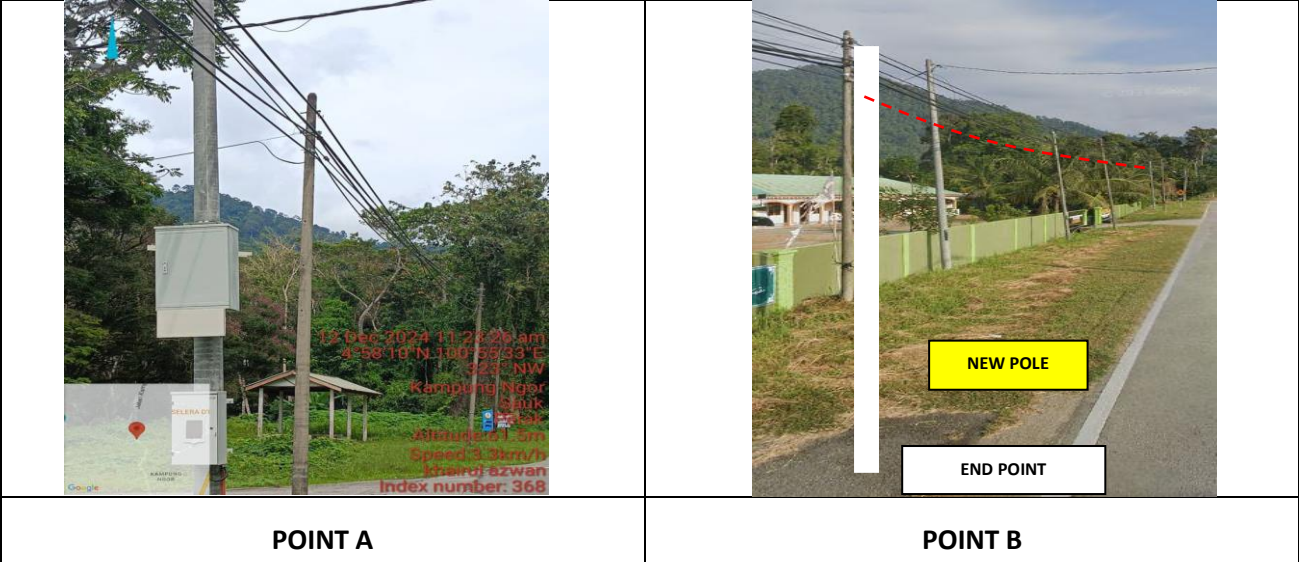


TECHNICAL PROPOSAL

ABA4046 SEKOLAH KEBANGSAAN JENALIK (D-SIDE)

Company Name : ARATIMUR SDN BHD
Company Address : A-08-13, 8th Floor, Block A, Radia Office, Persiaran Singgahsana, 40150 Bukit Jelutong, Shah Alam, Selangor
Prepared By : Khairul Tajuddin
Date : 25/02/2025





Starting Point

Site / Boundary Name : Sekolah Kebangsaan Jenalik
 Address : Kampung Ngor,
 District : Sauk
 Postcode : 33500
 State : Perak
 GPS Coordinate : 4.969382, 100.925690
 LRD : A

End Point

Site / Boundary Name : Jalan Kampung Ngor,
 Address : Sauk
 District : Kuala Kangsar
 Postcode : 33500
 State : Perak
 GPS Coordinate : 4.9596375, 100.92757576
 LRD : B

	<p align="center">PROJEK PENYEDIAAN DAN PENYELENGGARAAN POINT OF PRESENCE (POP) FASA 2: HAB INFRASTRUKTUR GENTIAN OPTIK BERHAMPIRAN DENGAN SEKOLAH, KAWASAN PERINDUSTRIAN, PREMIS KERAJAAN DAN KOMUNITI SEKITARNYA OLEH KEMENTERIAN KOMUNIKASI MALAYSIA - ZON UTARA (KKMM.400-11/17/132(1))</p>	
---	--	---

1.0 WORK SUMMARY

NO	PROPOSED DISTANCE AND METHOD	UNIT	QUANTITY
1	Horizontal Directional Drilling (HDD)	m	30m
2	Carriage Way Open Trench (CW)	m	0
3	Grass Verge Open Trenching (GV)	m	0
4	Micro Trenching (MT)	m	0
	Total		0

NO	OTHER INFORMATION	UNIT	QUANTITY
1	Installation of Short Span ADSS Fibre Cables	m	2190m
2	Install New Pole	ea	69
3	Install New JRC7 Manhole	ea	2
4	Install GI Riser 100mm	ea	2
5	Install Fiber Distribution Point and Closure (Splicing, Termination and Testing	ea	17
6	Estimated Time Required For Completion	days	30



**PROJEK PENYEDIAAN DAN PENYELENGGARAAN POINT OF PRESENCE (POP)
 FASA 2: HAB INFRASTRUKTUR GENTIAN OPTIK BERHAMPIRAN DENGAN
 SEKOLAH, KAWASAN PERINDUSTRIAN, PREMIS KERAJAAN DAN KOMUNITI
 SEKITARNYA OLEH KEMENTERIAN KOMUNIKASI MALAYSIA - ZON UTARA
 (KKMM.400-11/17/132(1))**



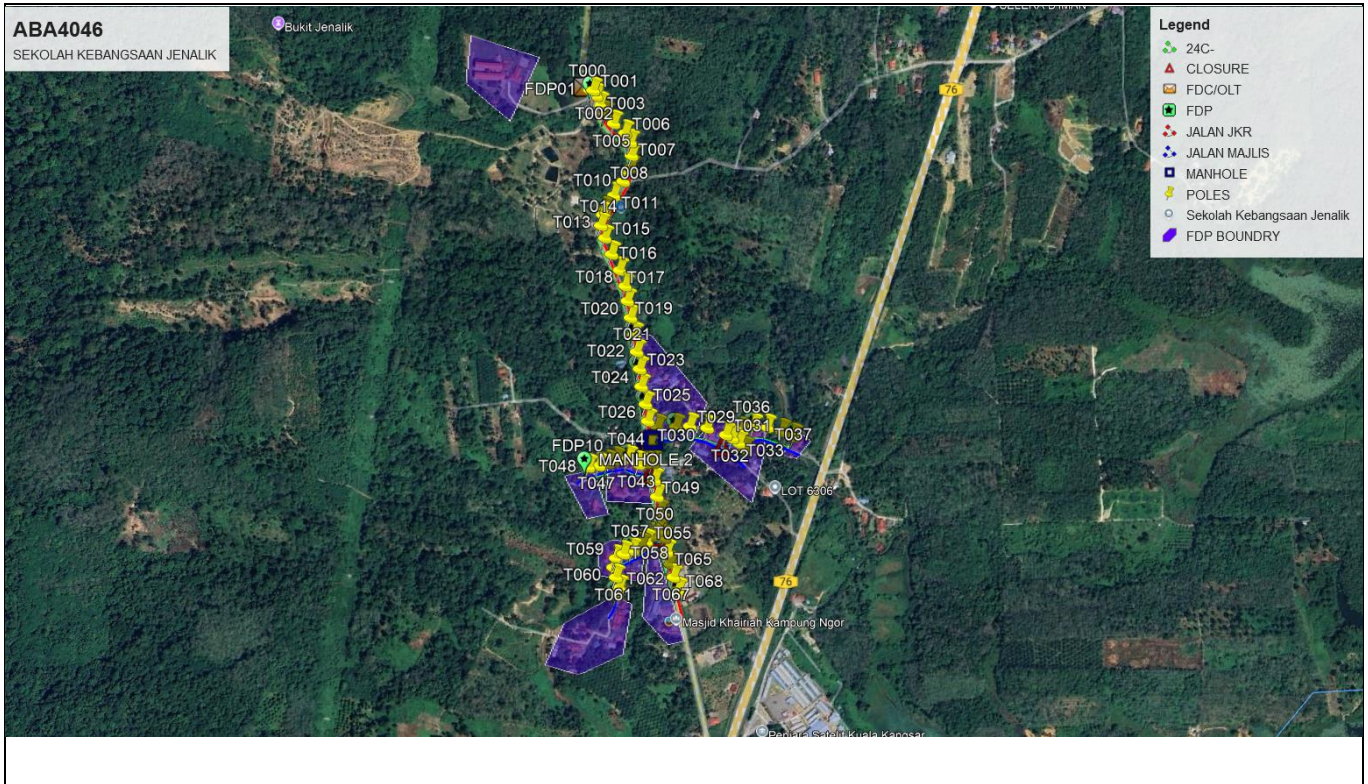
2.0 LOCAL AUTHORITY SUMMARY

Daerah Kuala Kangsar

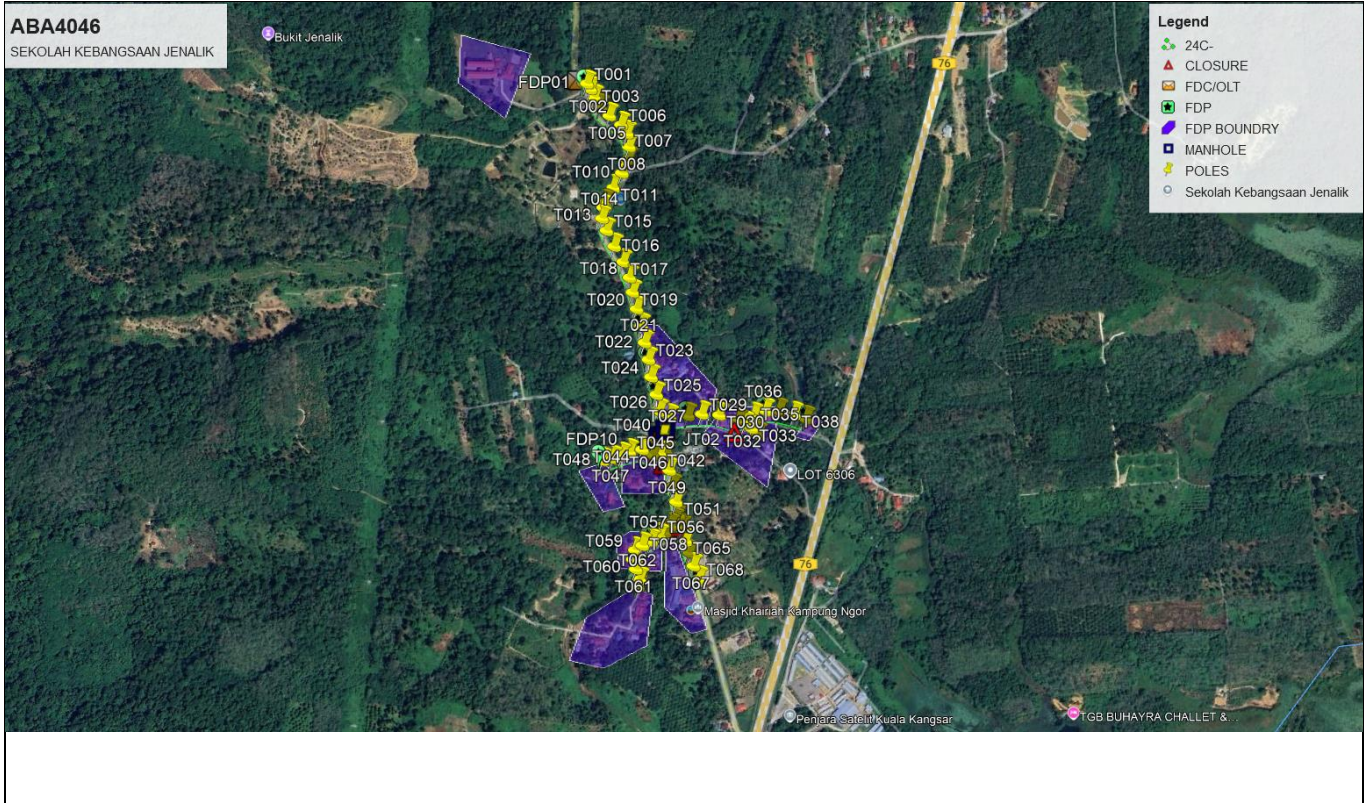
NO	ITEMS	OWNER	QUANTITY	DISTANCE (m)
1	HDD	JKR	1	30
		Majlis	-	-
		Estate / Private Land	-	-
2	New Pole	JKR	38	1285m
		Majlis	31	875m
		Estate / Private Land	-	-
Total distance (m)				2190m

3.0 SITE PLAN- KMZ

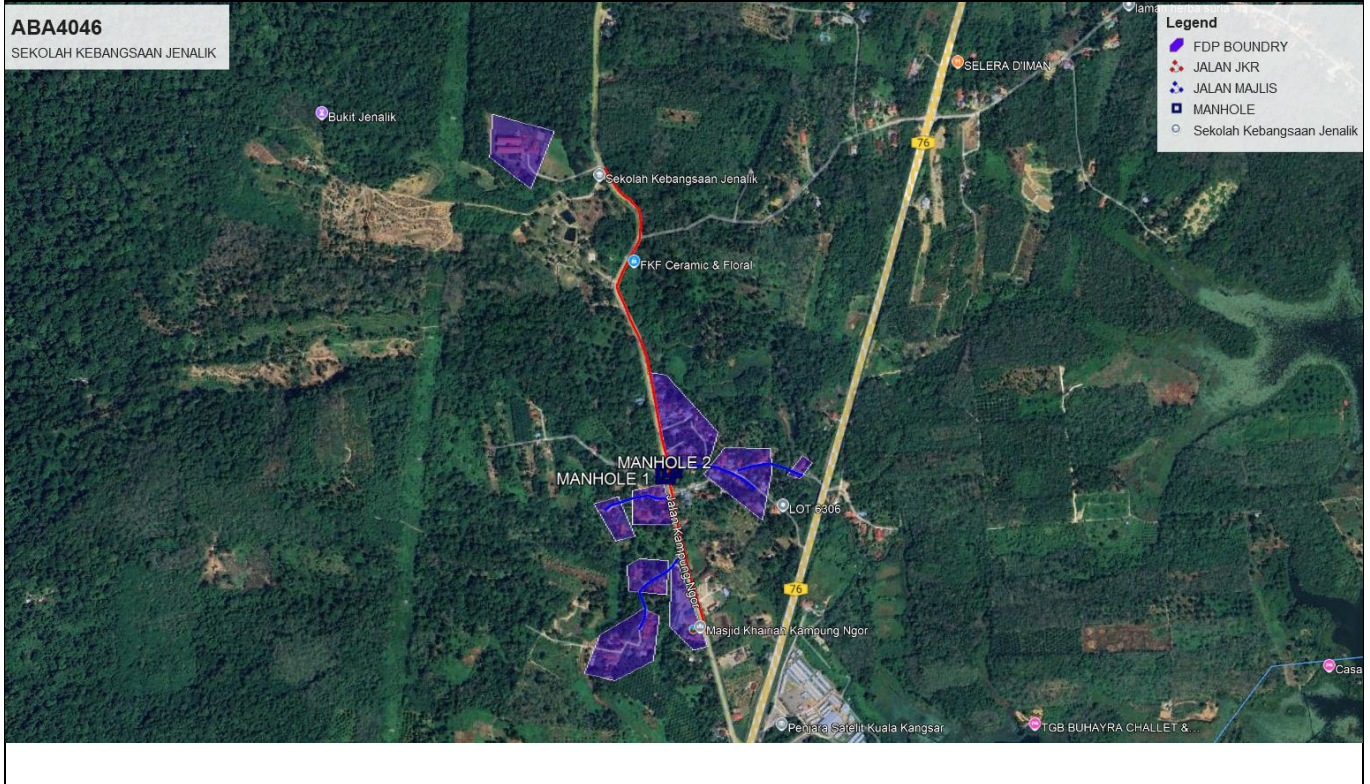
3.1 Overview Site Area



3.2 Site Boundry



3.3 Road Boundry



4.0 PROPOSED MANHOLE & HDD AND NEW POLE

No.	Pole & Manhole ID	Distance	Latitude	Longitude	Local Authority
1	FDC/OLT		4.969382	100.92569	JKR Kuala Kangsar
2	T001	35	4.969378	100.925758	JKR Kuala Kangsar
3	T002	35	4.969275	100.925817	JKR Kuala Kangsar
4	T003	35	4.969124	100.925883	JKR Kuala Kangsar
5	T004	35	4.968946	100.925987	JKR Kuala Kangsar
6	T005	35	4.968772	100.926147	JKR Kuala Kangsar
7	T006	35	4.968588	100.92636	JKR Kuala Kangsar
8	T007	35	4.968415	100.926466	JKR Kuala Kangsar
9	T008	35	4.968174	100.926489	JKR Kuala Kangsar
10	T009	35	4.967956	100.926475	JKR Kuala Kangsar
11	T010	35	4.9677	100.926334	JKR Kuala Kangsar
12	T011	35	4.96743	100.92616	JKR Kuala Kangsar
13	T012	35	4.967161	100.92599	JKR Kuala Kangsar
14	T013	35	4.967068	100.925958	JKR Kuala Kangsar
15	T014	35	4.966866	100.925924	JKR Kuala Kangsar
16	T015	35	4.966633	100.926	JKR Kuala Kangsar
17	T016	35	4.966334	100.926129	JKR Kuala Kangsar
18	T017	35	4.966036	100.926284	JKR Kuala Kangsar
19	T018	35	4.96574	100.926389	JKR Kuala Kangsar
20	T019	35	4.965462	100.926435	JKR Kuala Kangsar
21	T020	35	4.965149	100.926498	JKR Kuala Kangsar
22	T021	35	4.964826	100.92657	JKR Kuala Kangsar
23	T022	35	4.964513	100.92662	JKR Kuala Kangsar
24	T023	35	4.964192	100.926677	JKR Kuala Kangsar
25	T024	35	4.963866	100.926711	JKR Kuala Kangsar
26	T025	35	4.963535	100.926795	JKR Kuala Kangsar
27	T026	35	4.963219	100.92684	JKR Kuala Kangsar
28	MANHOLE 1	35	4.962965	100.926873	JKR Kuala Kangsar
29	MANHOLE 2	30	4.963089	100.927009	Majlis Perbandaran Kuala Kangsar
30	T027	35	4.963102	100.927025	Majlis Perbandaran Kuala Kangsar
31	T028	35	4.963114	100.92737	Majlis Perbandaran Kuala Kangsar
32	T029	35	4.963134	100.927631	Majlis Perbandaran Kuala Kangsar
33	T030	35	4.963101	100.927956	Majlis Perbandaran Kuala Kangsar
34	T031	35	4.962976	100.928308	Majlis Perbandaran Kuala Kangsar
35	T032	35	4.962913	100.928427	Majlis Perbandaran Kuala Kangsar
36	T033	35	4.962823	100.928553	Majlis Perbandaran Kuala Kangsar
37	T034	35	4.962703	100.928666	Majlis Perbandaran Kuala Kangsar
38	T035	35	4.963062	100.928605	Majlis Perbandaran Kuala Kangsar
39	T036	35	4.96314	100.92883	Majlis Perbandaran Kuala Kangsar
40	T037	35	4.963125	100.929085	Majlis Perbandaran Kuala Kangsar
41	T038	35	4.963045	100.929364	Majlis Perbandaran Kuala Kangsar
42	T039	35	4.962958	100.929583	Majlis Perbandaran Kuala Kangsar
43	T040	35	4.962789°	100.926884	JKR Kuala Kangsar
44	T041	35	4.962442	100.926938	JKR Kuala Kangsar
45	T042	35	4.962433	100.926815	Majlis Perbandaran Kuala Kangsar
46	T043	35	4.962412	100.926676	Majlis Perbandaran Kuala Kangsar

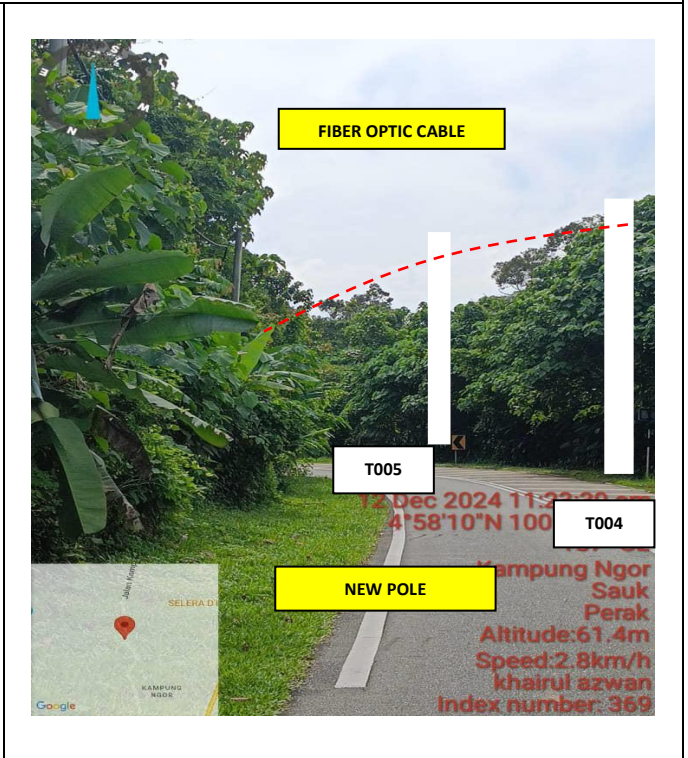
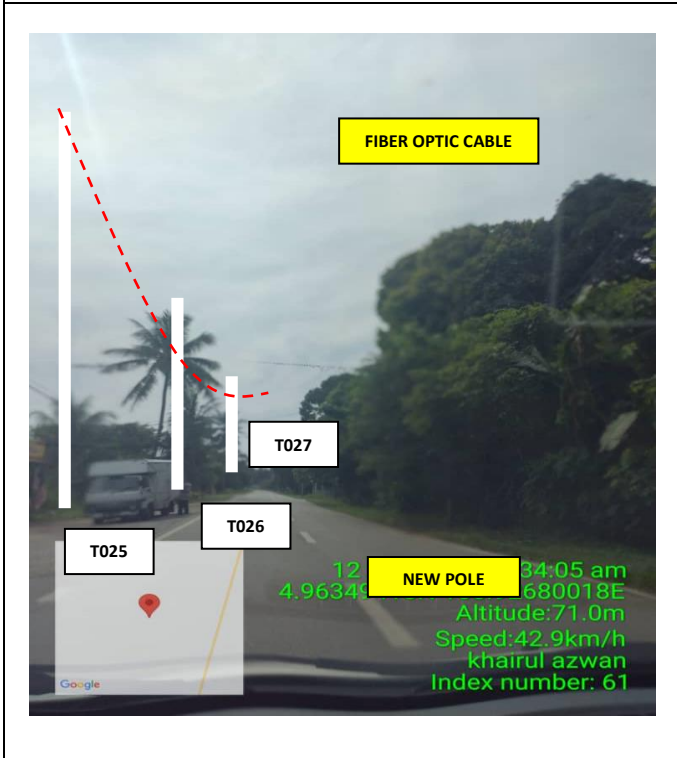
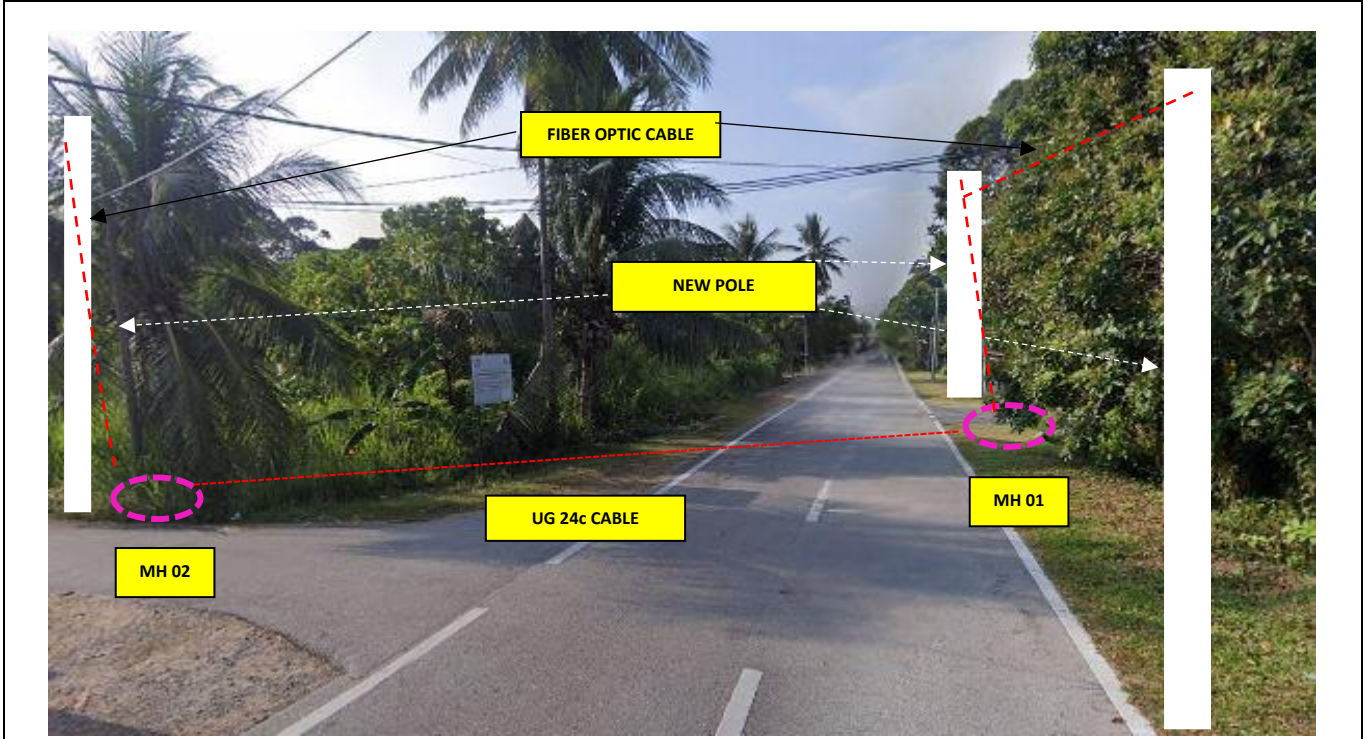


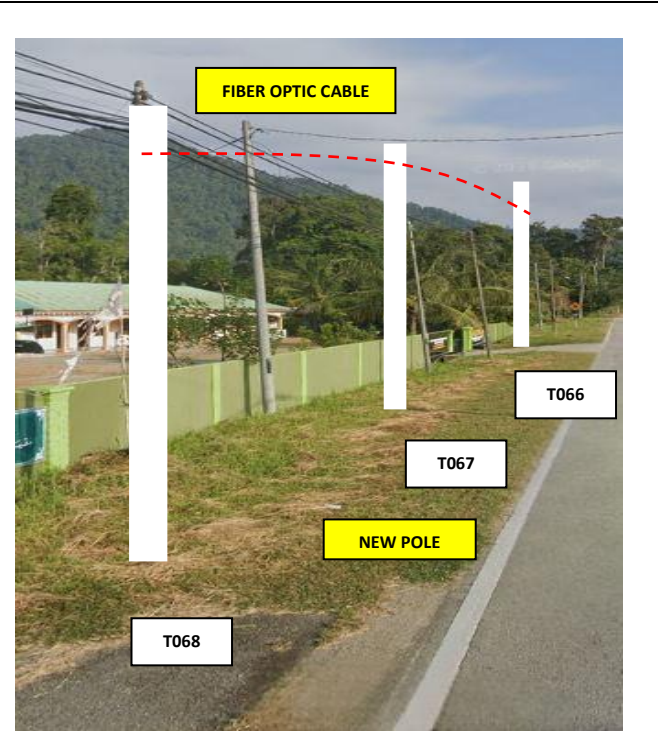
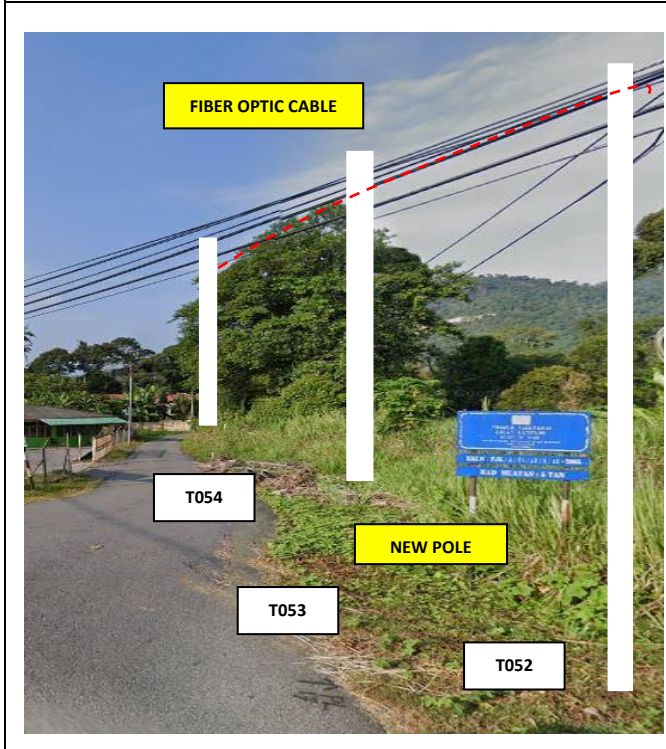
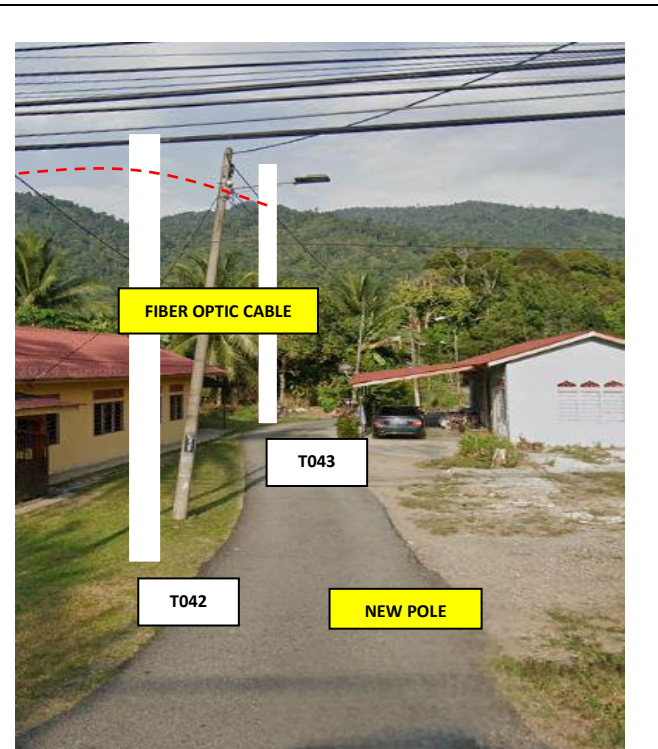
**PROJEK PENYEDIAAN DAN PENYELENGGARAAN POINT OF PRESENCE (POP)
 FASA 2: HAB INFRASTRUKTUR GENTIAN OPTIK BERHAMPIRAN DENGAN
 SEKOLAH, KAWASAN PERINDUSTRIAN, PREMIS KERAJAAN DAN KOMUNITI
 SEKITARNYA OLEH KEMENTERIAN KOMUNIKASI MALAYSIA - ZON UTARA
 (KKMM.400-11/17/132(1))**





47	T044	35	4.96252	100.926484	Majlis Perbandaran Kuala Kangsar
48	T045	35	4.962486	100.926245	Majlis Perbandaran Kuala Kangsar
49	T046	35	4.962426	100.926099	Majlis Perbandaran Kuala Kangsar
50	T047	35	4.962377	100.925928	Majlis Perbandaran Kuala Kangsar
51	T048	35	4.962348	100.925734	Majlis Perbandaran Kuala Kangsar
52	T049	35	4.96211	100.926975	JKR Kuala Kangsar
53	T050	35	4.961809	100.927027	JKR Kuala Kangsar
54	T051	35	4.961517	100.927078	JKR Kuala Kangsar
55	T052	35	4.961268	100.927116	JKR Kuala Kangsar
56	T053	35	4.961169	100.927036	Majlis Perbandaran Kuala Kangsar
57	T054	35	4.961071	100.926948	Majlis Perbandaran Kuala Kangsar
58	T055	35	4.960955	100.926834	Majlis Perbandaran Kuala Kangsar
59	T056	35	4.960883	100.926738	Majlis Perbandaran Kuala Kangsar
60	T057	35	4.960795	100.926571	Majlis Perbandaran Kuala Kangsar
61	T058	35	4.960729	100.926405	Majlis Perbandaran Kuala Kangsar
62	T059	35	4.960646	100.926264	Majlis Perbandaran Kuala Kangsar
63	T060	35	4.960472	100.926215	Majlis Perbandaran Kuala Kangsar
64	T061	35	4.960287	100.926266	Majlis Perbandaran Kuala Kangsar
65	T062	35	4.96009	100.926331	Majlis Perbandaran Kuala Kangsar
66	T063	35	4.959959	100.926288	Majlis Perbandaran Kuala Kangsar
67	T064	35	4.961038	100.927168	JKR Kuala Kangsar
68	T065	35	4.960772	100.927221	JKR Kuala Kangsar
69	T066	35	4.96055	100.927283	JKR Kuala Kangsar
70	T067	35	4.960297	100.927348	JKR Kuala Kangsar
71	T068	35	4.960048	100.92744	JKR Kuala Kangsar

5.0 SITE PHOTO- PROPOSED MANHOLE & NEW POLE





	<p align="center">PROJEK PENYEDIAAN DAN PENYELENGGARAAN POINT OF PRESENCE (POP) FASA 2: HAB INFRASTRUKTUR GENTIAN OPTIK BERHAMPIRAN DENGAN SEKOLAH, KAWASAN PERINDUSTRIAN, PREMIS KERAJAAN DAN KOMUNITI SEKITARNYA OLEH KEMENTERIAN KOMUNIKASI MALAYSIA - ZON UTARA (KKMM.400-11/17/132(1))</p>	
---	--	---

6.0 3rd PARTIES DEPENDENCIES

NO.	LOCAL COUNCIL/ AUTHORITY	REMARK
1	Majlis Perbandaran Kuala Kangsar	
2	JKR Kuala Kangsar	

