

POP2 D/SIDE ABA5069 SK DEGONG – Technical Proposal

Company Name	:	RBBA SDN BHD
Company Address	:	L3 TINGKAT, 1, JALAN RASATHURAI, PEKAN KUALA KUBU BHARU
Prepared By	:	Muhammad Faiz
Date	:	12/09/2024



POINT A

POINT B

Starting Point

Site / Boundary Name	:	Langkap, Perak
Address	:	Jalan Desa Maju Perak 2, 36700 Langkap, Perak.
District	:	Langkap
Postcode	:	36700
State	:	Perak
GPS Coordinate	:	4.085134°, 101.143103°
LRD	:	A

End Point

Site / Boundary Name	:	Langkap, perak
Address	:	Kampung Degong, 36700 Langkap, Perak.
District	:	Langkap
Postcode	:	36700
State	:	Perak
GPS Coordinate	:	4.095620°, 101.137268°
LRD	:	B

Work Summary

No	Proposed Distance and Method	Unit	Qty
1	Horizontal Directional Drilling (HDD)	m	0
2	Carriage Way Open trench (CW)	m	0
3	Grass Verge Open Trenching (GV)	m	0
4	Micro trenching (MT)	m	0
	Total		0

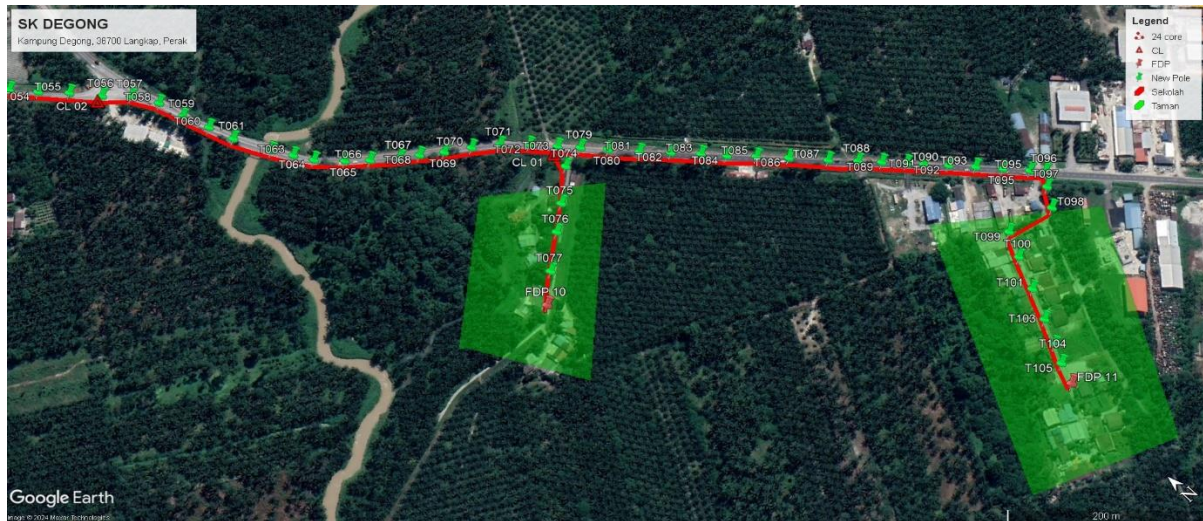
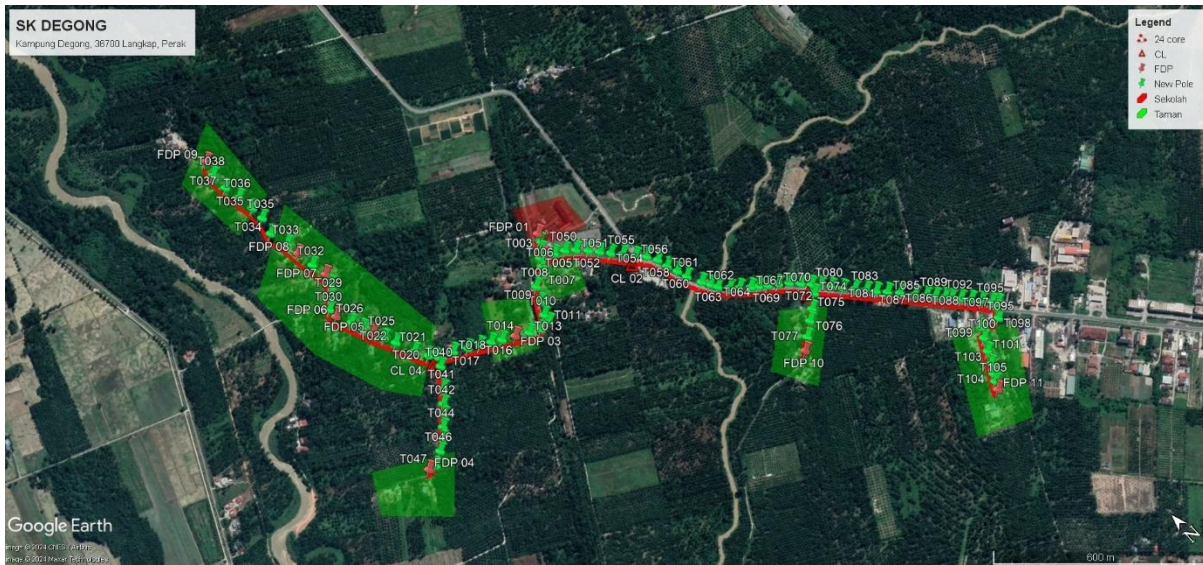
	Other Information	Unit	Qty
1	Proposed Manhole	EA	0
2	Proposed Pole	EA	106
3	Joint Closure	EA	3
4	Estimated time required for completion	days	18

Local Authority Summary

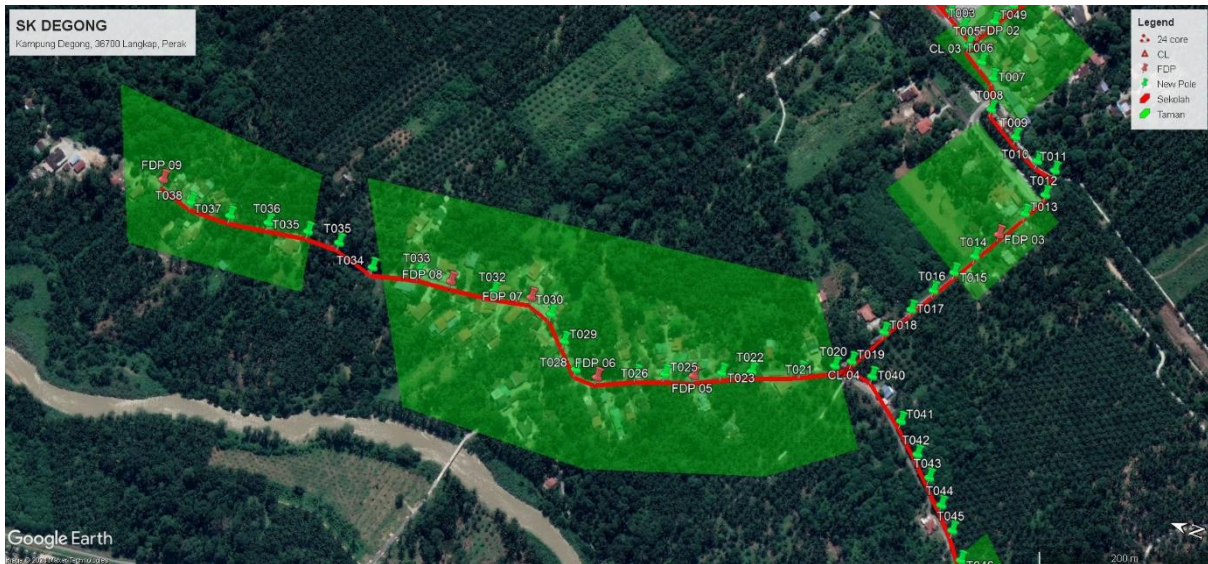
1. Daerah Kuala Muda

Bil	Items	Owner	Quantity	Distance
1	HDD	JKR	-	-
		Majlis	-	-
		Estate / Private Land	-	-
2	New Pole	JKR	33pc	990m
		Majlis	60pc	2400m
		Estate / Private Land	-	-
3	Existing TNB Pole	JKR	-	-
		Majlis	-	-
		Estate / Private Land	-	-
Total				3,390m

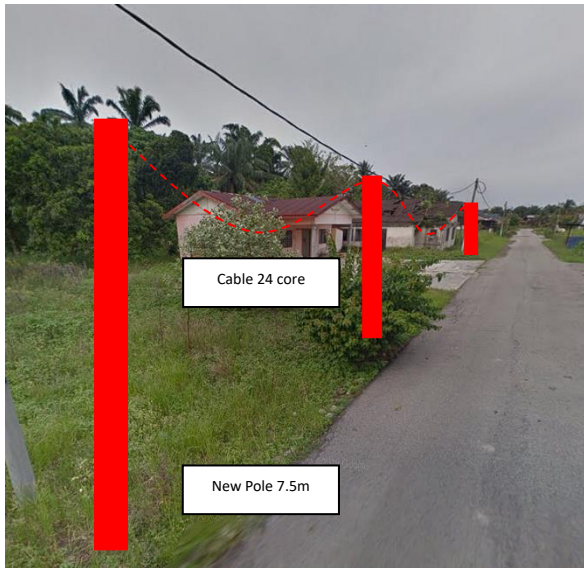
Site Plan – KMZ (Overview site area)



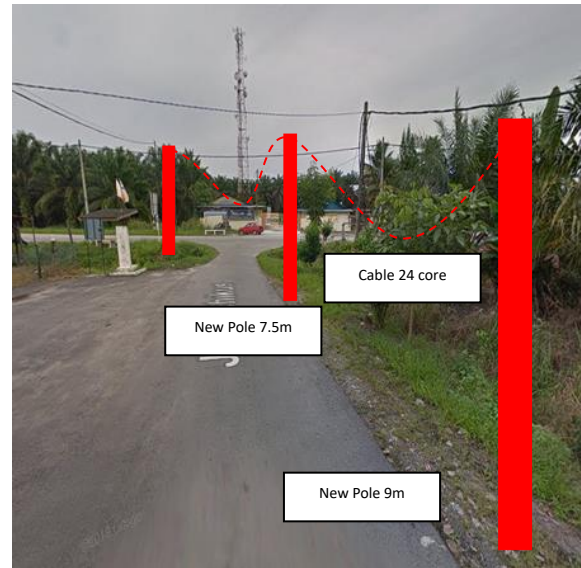
Site Plan – KMZ Routing (Prop new Pole)



Picture 1 – Jalan Desa Maju Perak 2



Picture 2 – Taman Hala Nilam



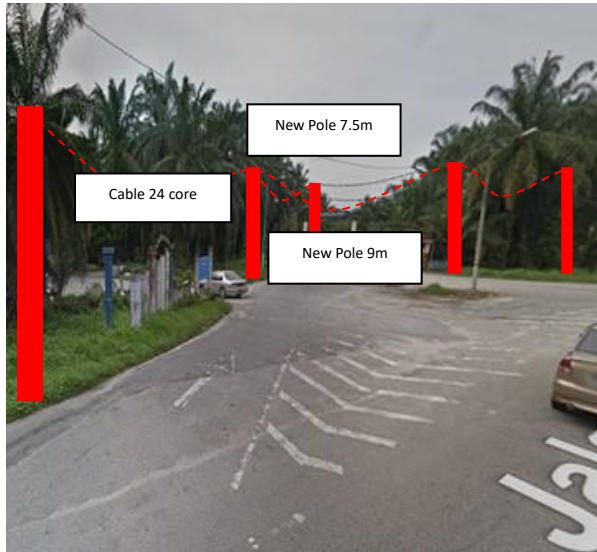
Picture 3 – Jalan Kampar – Changkat Jong



Picture 4 – Jalan Kampar – Changkat Jong



Picture 5 – Jalan Kampar – Changkat Jong



Picture 6 – Kampung Degong



Picture 6 – Kampung Degong



Prop New Pole Lat & Long Table

PROPOSED POLE COORDINATE		
POLE NUMBER	LATITUDE	LONGITUDE
T001	4.095779	101.137368
T002	4.095620	101.137268
T003	4.095429	101.137143
T004	4.095282	101.137084
T005	4.095313	101.136978
T006	4.095121	101.136857
T007	4.094948	101.136735
T008	4.094854	101.136409
T009	4.094511	101.136219
T010	4.094207	101.136055
T011	4.086726	101.144280
T012	4.093996	101.136022
T013	4.094007	101.135740
T014	4.094144	101.135474
T015	4.087323	101.143784
T016	4.094329	101.135167
T017	4.094494	101.134859
T018	4.094641	101.134620
T019	4.094785	101.134362
T020	4.094938	101.134088
T021	4.088265	101.142973
T022	4.088444	101.142812
T023	4.088616	101.142666
T024	4.088827	101.142482
T025	4.089039	101.142299
T026	4.089257	101.142114
T027	4.089512	101.141888
T028	4.089810	101.141658
T029	4.090069	101.141437
T030	4.090282	101.141262
T031	4.090489	101.141066
T032	4.090663	101.140853
T033	4.090819	101.140635
T034	4.090970	101.140446
T035	4.091088	101.140294
T036	4.091275	101.140076
T037	4.091447	101.139902
T038	4.091671	101.139704
T039	4.091850	101.139600
T040	4.092042	101.139489
T041	4.092402	101.139319
T042	4.092661	101.139241
T043	4.092934	101.139145
T044	4.093208	101.139083
T045	4.093461	101.138942
T046	4.093670	101.138749
T047	4.093902	101.138891
T048	4.094184	101.138917
T049	4.094457	101.138940
T050	4.094706	101.138986

T051	4.095057	101.139040
T052	4.095389	101.139075
T053	4.095705	101.139132
T054	4.096098	101.139172
T055	4.096354	101.139203
T056	4.096655	101.139244
T057	4.095004	101.137559
T058	4.095136	101.137319
T059	4.095313	101.136978
T060	4.095121	101.136857
T061	4.094948	101.136735
T062	4.094854	101.136409
T063	4.094511	101.136219
T064	4.094207	101.136055
T065	4.093996	101.136022
T066	4.094007	101.135740
T067	4.094144	101.135474
T068	4.094494	101.134859
T069	4.094641	101.134620
T070	4.094785	101.134362
T071	4.094938	101.134088
T072	4.095130	101.133765
T073	4.095347	101.133351
T074	4.095498	101.133245
T075	4.095823	101.133072
T076	4.096304	101.132881
T077	4.096596	101.132758
T078	4.097158	101.132536
T079	4.097443	101.132428
T080	4.098058	101.132254
T081	4.098278	101.132491
T082	4.098509	101.132713
T083	4.099163	101.132726
T084	4.099987	101.132635
T085	4.100463	101.132516
T086	4.100890	101.132637
T087	4.101243	101.132634
T088	4.101672	101.132573
T089	4.102082	101.132502
T090	4.102524	101.132491
T091	4.095090	101.133279
T092	4.094648	101.132939
T093	4.094367	101.132670
T094	4.094168	101.132483
T095	4.093953	101.132258
T096	4.093756	101.132048
T097	4.093570	101.131786
T098	4.093383	101.131453
T099	4.095429	101.137143
T100	4.095620	101.137268
T101	4.089444	101.140781
T102	4.089622	101.141027
T103	4.089865	101.141340
T104	4.095779	101.137368

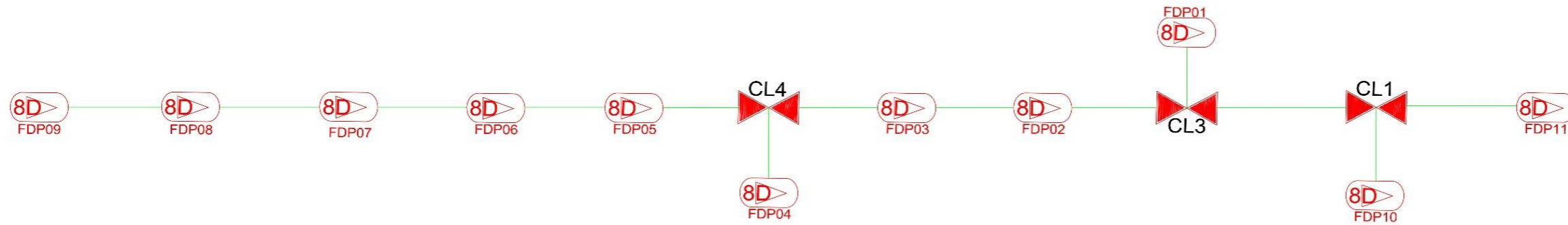
T105	4.095282	101.137084
T106	4.094329	101.135167

Overall Pole (Propose New)

No.	Pole & Manhole ID	Distance (M)	Latitude	Longitude	Local Authority
1	T001	32	4.085134	101.143103	Majlis Teluk Intan
2	T002	32	4.085353	101.143237	Majlis Teluk Intan
3	T003	32	4.085603	101.143374	Majlis Teluk Intan
4	T004	32	4.085839	101.143499	Majlis Teluk Intan
5	T005	32	4.086319	101.143775	Majlis Teluk Intan
6	T006	32	4.086256	101.143992	Majlis Teluk Intan
7	T007	32	4.086181	101.144255	Majlis Teluk Intan
8	T008	32	4.086353	101.144384	Majlis Teluk Intan
9	T009	32	4.086464	101.144502	JKR Teluk Intan
10	T010	32	4.086578	101.144405	JKR Teluk Intan
11	T011	32	4.086726	101.144280	JKR Teluk Intan
12	T012	32	4.086869	101.144164	JKR Teluk Intan
13	T013	32	4.087006	101.144050	JKR Teluk Intan
14	T014	32	4.088265	101.142973	JKR Teluk Intan
15	T015	32	4.087323	101.143784	JKR Teluk Intan
16	T016	32	4.087501	101.143629	JKR Teluk Intan
17	T017	32	4.087646	101.143515	JKR Teluk Intan
18	T018	32	4.087767	101.143404	JKR Teluk Intan
19	T019	32	4.087933	101.143252	JKR Teluk Intan
20	T020	32	4.088089	101.143130	JKR Teluk Intan
21	T021	32	4.088265	101.142973	JKR Teluk Intan
22	T022	32	4.088444	101.142812	JKR Teluk Intan
23	T023	32	4.088616	101.142666	JKR Teluk Intan
24	T024	32	4.088827	101.142482	JKR Teluk Intan
25	T025	32	4.089039	101.142299	JKR Teluk Intan
26	T026	32	4.089257	101.142114	JKR Teluk Intan
27	T027	32	4.089512	101.141888	JKR Teluk Intan
28	T028	32	4.089810	101.141658	JKR Teluk Intan
29	T029	32	4.090069	101.141437	JKR Teluk Intan
30	T030	32	4.090282	101.141262	JKR Teluk Intan
31	T031	32	4.090489	101.141066	JKR Teluk Intan
32	T032	32	4.090663	101.140853	JKR Teluk Intan
33	T033	32	4.090819	101.140635	JKR Teluk Intan
34	T034	32	4.090970	101.140446	JKR Teluk Intan
35	T035	32	4.091088	101.140294	JKR Teluk Intan
36	T036	32	4.091275	101.140076	JKR Teluk Intan
37	T037	32	4.091447	101.139902	JKR Teluk Intan
38	T038	32	4.091671	101.139704	JKR Teluk Intan
39	T039	32	4.091850	101.139600	JKR Teluk Intan
40	T040	32	4.092042	101.139489	JKR Teluk Intan
41	T041	32	4.092402	101.139319	JKR Teluk Intan
42	T042	32	4.092661	101.139241	JKR Teluk Intan
43	T043	32	4.092934	101.139145	JKR Teluk Intan
44	T044	32	4.093208	101.139083	JKR Teluk Intan
45	T045	32	4.093461	101.138942	JKR Teluk Intan
46	T046	32	4.093670	101.138749	JKR Teluk Intan
47	T047	32	4.093902	101.138891	JKR Teluk Intan
48	T048	32	4.094184	101.138917	JKR Teluk Intan
49	T049	32	4.094457	101.138940	JKR Teluk Intan
50	T050	32	4.094706	101.138986	JKR Teluk Intan

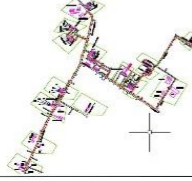
51	T051	32	4.095057	101.139040	JKR Teluk Intan
52	T052	32	4.095389	101.139075	JKR Teluk Intan
53	T053	32	4.095705	101.139132	JKR Teluk Intan
54	T054	32	4.096098	101.139172	JKR Teluk Intan
55	T055	32	4.096354	101.139203	JKR Teluk Intan
56	T056	32	4.096655	101.139244	JKR Teluk Intan
57	T057	32	4.095004	101.137559	Majlis Teluk Intan
58	T058	32	4.095136	101.137319	Majlis Teluk Intan
59	T059	32	4.095313	101.136978	Majlis Teluk Intan
60	T060	32	4.095121	101.136857	Majlis Teluk Intan
61	T061	32	4.094948	101.136735	Majlis Teluk Intan
62	T062	32	4.094854	101.136409	Majlis Teluk Intan
63	T063	32	4.094511	101.136219	Majlis Teluk Intan
64	T064	32	4.094207	101.136055	Majlis Teluk Intan
65	T065	32	4.093996	101.136022	Majlis Teluk Intan
66	T066	32	4.094007	101.135740	Majlis Teluk Intan
67	T067	32	4.094144	101.135474	Majlis Teluk Intan
68	T068	32	4.094494	101.134859	Majlis Teluk Intan
69	T069	32	4.094641	101.134620	Majlis Teluk Intan
70	T070	32	4.094785	101.134362	Majlis Teluk Intan
71	T071	32	4.094938	101.134088	Majlis Teluk Intan
72	T072	32	4.095130	101.133765	Majlis Teluk Intan
73	T073	32	4.095347	101.133351	Majlis Teluk Intan
74	T074	32	4.095498	101.133245	Majlis Teluk Intan
75	T075	32	4.095823	101.133072	Majlis Teluk Intan
76	T076	32	4.096304	101.132881	Majlis Teluk Intan
77	T077	32	4.096596	101.132758	Majlis Teluk Intan
78	T078	32	4.097158	101.132536	Majlis Teluk Intan
79	T079	32	4.097443	101.132428	Majlis Teluk Intan
80	T080	32	4.098058	101.132254	Majlis Teluk Intan
81	T081	32	4.098278	101.132491	Majlis Teluk Intan
82	T082	32	4.098509	101.132713	Majlis Teluk Intan
83	T083	32	4.099163	101.132726	Majlis Teluk Intan
84	T084	32	4.099987	101.132635	Majlis Teluk Intan
85	T085	32	4.100463	101.132516	Majlis Teluk Intan
86	T086	32	4.100890	101.132637	Majlis Teluk Intan
87	T087	32	4.101243	101.132634	Majlis Teluk Intan
88	T088	32	4.101672	101.132573	Majlis Teluk Intan
89	T089	32	4.102082	101.132502	Majlis Teluk Intan
90	T090	32	4.102524	101.132491	Majlis Teluk Intan
91	T091	32	4.095090	101.133279	Majlis Teluk Intan
92	T092	32	4.094648	101.132939	Majlis Teluk Intan
93	T093	32	4.094367	101.132670	Majlis Teluk Intan
94	T094	32	4.094168	101.132483	Majlis Teluk Intan
95	T095	32	4.093953	101.132258	Majlis Teluk Intan
96	T096	32	4.093756	101.132048	Majlis Teluk Intan
97	T097	32	4.093570	101.131786	Majlis Teluk Intan
98	T098	32	4.093383	101.131453	Majlis Teluk Intan
99	T099	32	4.086033	101.143618	Majlis Teluk Intan
100	T100	32	4.095620	101.137268	Majlis Teluk Intan
101	T101	32	4.089444	101.140781	Majlis Teluk Intan
102	T102	32	4.089622	101.141027	Majlis Teluk Intan
103	T103	32	4.089865	101.141340	Majlis Teluk Intan
104	T104	32	4.095779	101.137368	Majlis Teluk Intan

105	T105	32	4.095282	101.137084	Majlis Teluk Intan
106	T106	32	4.094329	101.135167	Majlis Teluk Intan



	12C FOC		Installed 1:4 / 1:8 / 1:32 splitter		Installed Pole (9m)		Suspension		New Manhole (PI)		Micro-trenching (Meter)		MH- NC.
	24C FOC		Installed Patch Cord		Installed Pole (7.5M)		Tension Pole Ring		New Manhole (JRC7)		Temporary wire (Meter)		Existing TND Pole NC.
	48C FOC		FDC		Installed Pole (6.7M)		FDP with (1:8) splitter		FDP Boundary		Lead / Coil (Meter)		New Pole NC.
	96C FOC		Closure		Existing TND Pole		Existing Manhole		FDD (Meter)		Active Outdoor Cabinet		Closure NC.
	144C FOC		Existing Closure		Installed Riser				Open Cut (Meter)		FDC NO.		FDP NC.

KEY PLAN:



PROJECT OWNER:



MAIN CONTRACTOR:



SUB CONTRACTOR:



PROJECT TITLE:

D-SIDE ABA5069 SEKOLAH
KEBANGSAAN DEGONG

DRAWING TITLE:

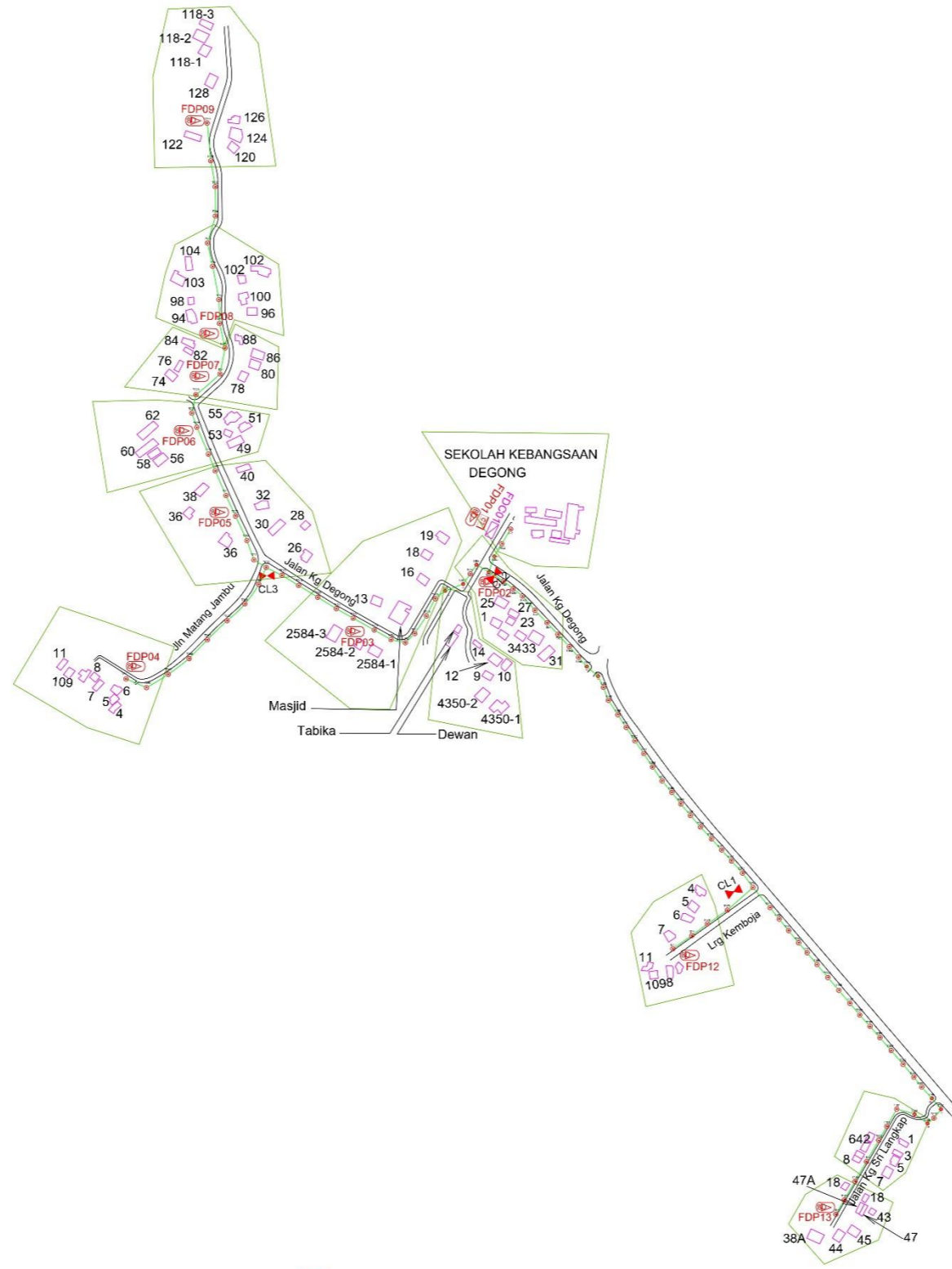
CONSTRUCTION DRAWING
ABA5069 SEKOLAH KEBANGSAAN
DEGONG

PROJECT PHASE:

POP 2

ACTUAL HOMEPASS :

Design By :	MUHAMMAD FAIZ	Date :	01/08/2024
Drawn By :	MUHAMMAD FAIZ	Scale :	N/A
Checked By :	HAFIZ HAMID	Job Number :	
DRAWING NUMBER :	ALLO-ABA5069	Sheet :	1
THIS PLAN AND IS COPYRIGHT AND THE PROPERTY		Size :	A1
OF ALLO! TECHNOLOGY SDN BHD			



	12C FOC		Installed Pole (9m)		Suspension		New Manhole (FT)		Micro Trenching (Meter)		MH1	MH NO.
	24C FOC		Installed Pole (7.5M)		Tension		New Manhole (JIBU)		Temporary Infra (Meter)		TKS-1	Existing T&B Pole NO.
	48C FOC		Installed Pole (6.7M)		Pole Ring		FOD Boundary		Loop / Co1 (Meter)		PO01	New Pole NO.
	86C FOC		Existing T&B Pole		FOD with 1:8 splitter		LDJ (Meter)		Active Outdoor Cabinet		CL01	Closure NO.
	144C FOC		Installed Riser		Existing Manhole		Open Cut (Meter)		TDC NO		DP1	FDP NO.

ACIJAL HOMEPASS : 123

KEY PLAN:

PROJECT OWNER:



MAIN CONTRACTOR:



SUB CONTRACTOR:



PROJECT TITLE:

**D-SIDE ABA5069
SEKOLAH KEBANGSAAN
DEGONG**

DRAWING TITLE:

**CONSTRUCTION DRAWING
ABA5069 SEKOLAH KEBANGSAAN
DEGONG**

PROJECT PHASE:

POP 2

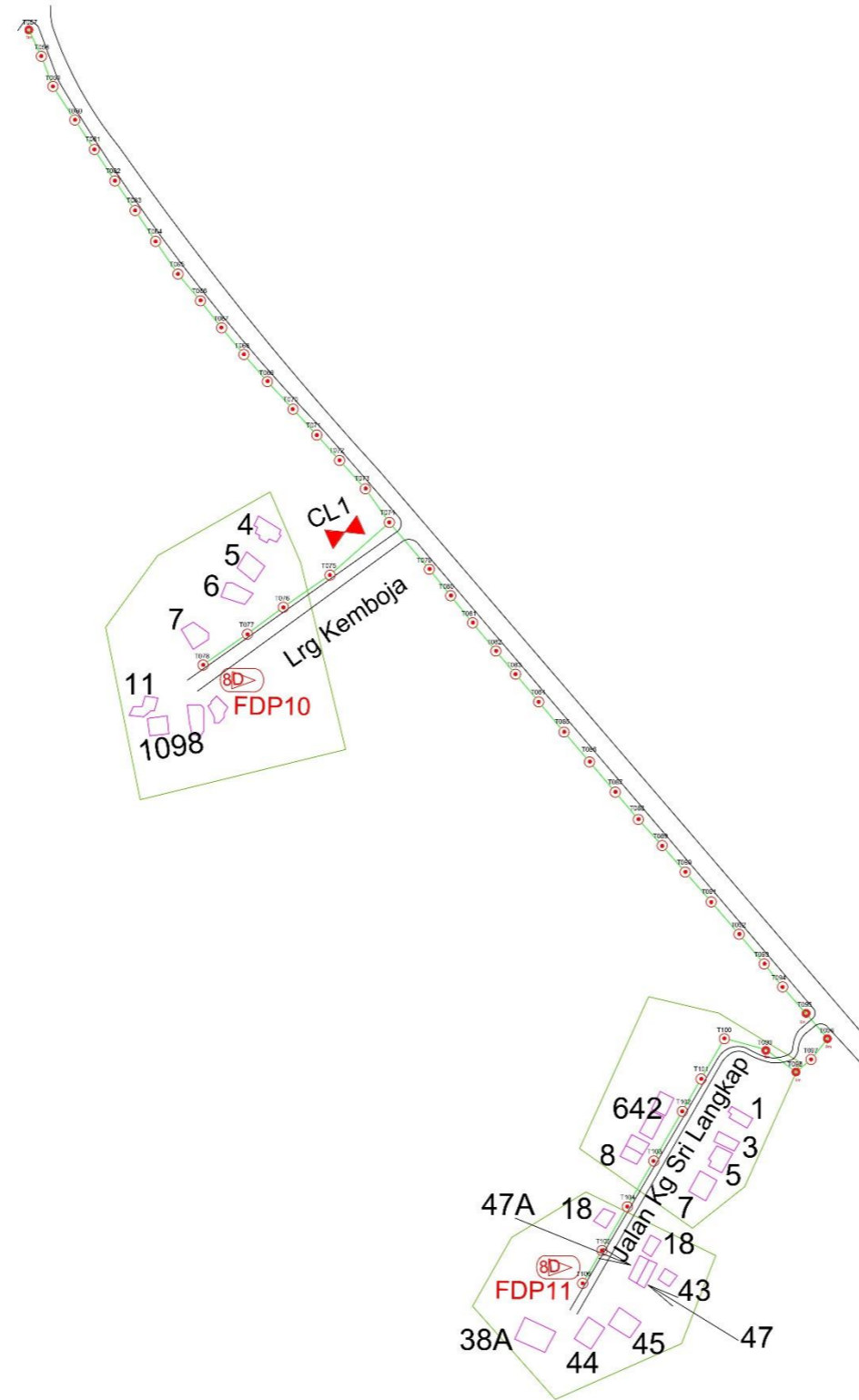
Design By : MUHAMMAD FAZ Date : 1/5/2024

Drawn by : MUHAMMAD FAIZ Scale : N/A

Checked By : HAFIZ FAHID Job Number :

DRAWING NUMBER : **ALLO-ABA5069** Sheet : 1

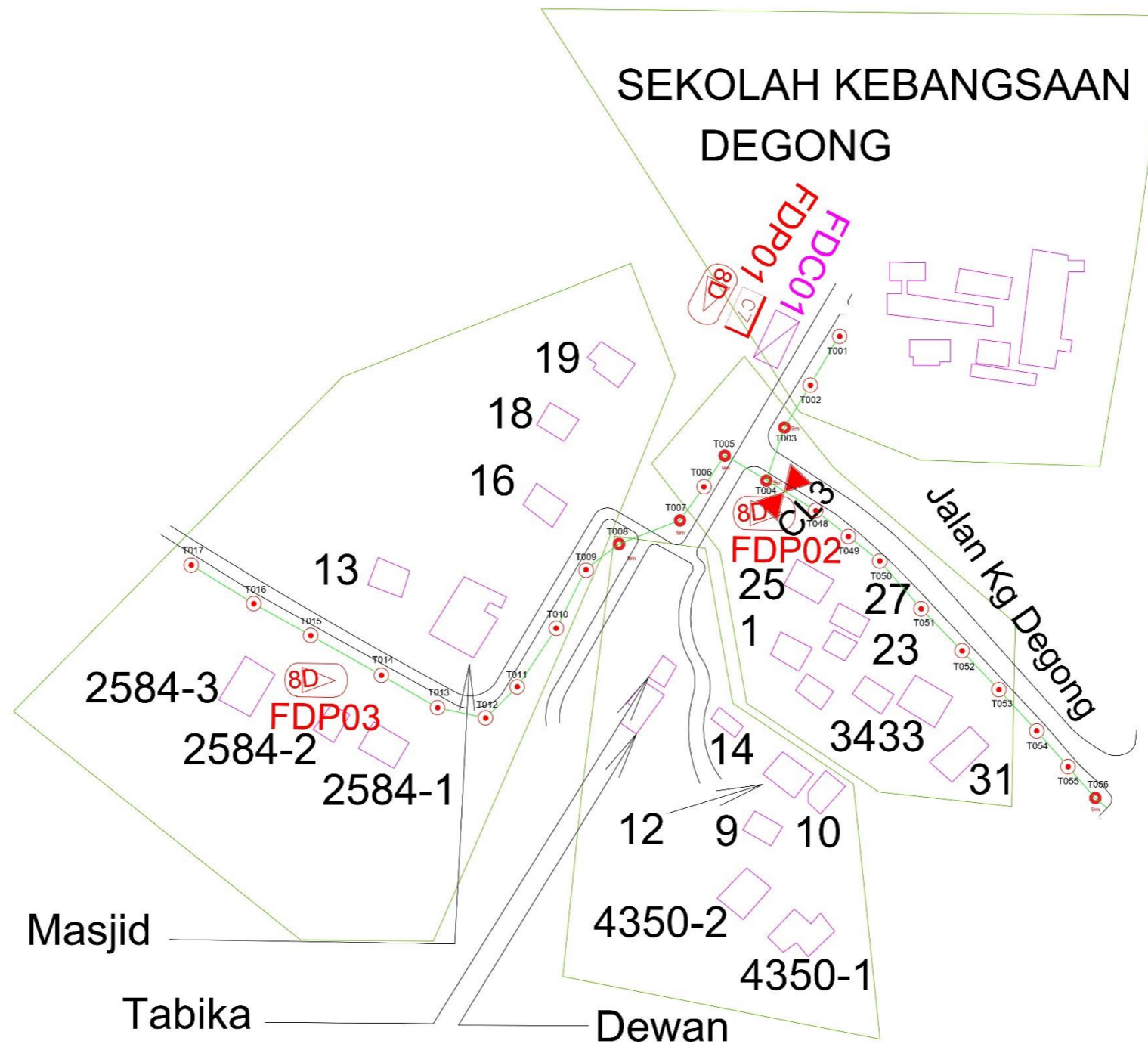
THIS PRINT AND ITS COPYRIGHT ARE THE PROPERTY OF ALLO! COMMUNICATIONS SDN BHD. Size : A1



ACTUAL HOMEPASS : 123

120 FOC	Installed 1:4 / 1:8 / 1:32 splitter	○	Installed Pole (9m)	⊕	Suspension	JB30	New Manhole (P)	—	Vibro Trenching (Meter)	MH1	MH NO.
240 FOC	Installed Patch Cord	●	Installed Pole (7.5M)	⊕	Tension	CT	New Manhole (JRC7)	—	Temporary Intra (Meter)	TKS-1	Existing TNB Pole NO.
480 FOC	FDC	□	Installed Pole (6.7M)	⊕	Pole Ring	—	-DP Boundary	○	Loop / Co1 (Meter)	PO01	New Pole NO.
960 FOC	Closure	●	Existing TNB Pole	⊕	FDP with (1:8) splitter	—	-DD (Meter)	#	Active Outdoor Cabinet	CL01	Closure NO.
1440 FOC	Existing Closure	□	Installed Riser	⊕	Existing Manhole	—	Open Cut (Meter)	CO1	FDC NO.	DP1	-DP NO.

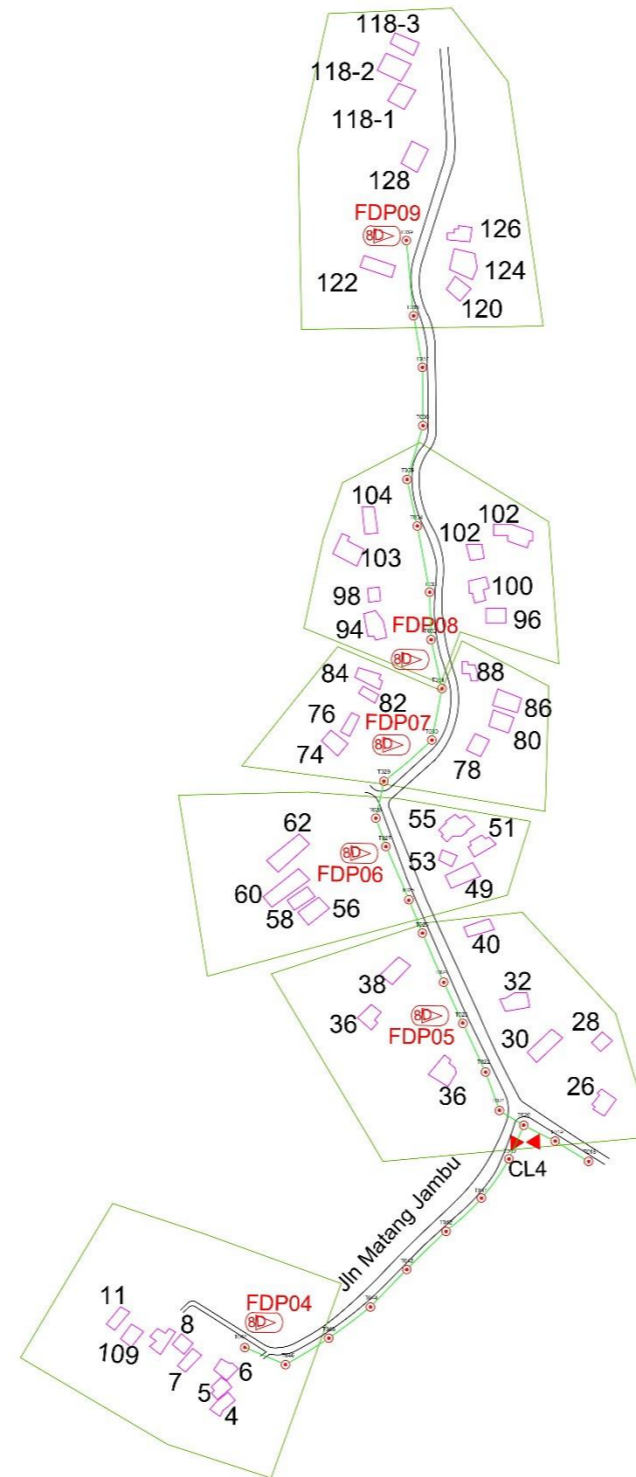
KEY PLAN:	PROJECT OWNER: 	MAIN CONTRACTOR: 	SUB-CONTRACTOR: ALLO! TECHNOLOGY SDN BHD Level 1, Lot 1819 Complex of Gateway Science & Information Technology (CSIT) Jalan 1/3002, Kuching, Sarawak TEL : 850-38-8000 FAX: 609-3-886522 E-MAIL : info@allo.my WEBSITE: HTTP://WWW.ALLO.MY	PROJECT TITLE: D-SIDE ABA5069 SEKOLAH KEBANGSAAN DEGONG	DRAWING TITLE: CONSTRUCTION DRAWING ABA5069 SEKOLAH KEBANGSAAN DEGONG	Design By : MUHAMMAD FAIZ Date : 1/8/2024 Drawn By : MUHAMMAD FAIZ Scale : N/A Checked By : HADZI IUMUD Job Number : DRAWING NUMBER : ALLO-ABA5069 Sheet : 2 PROJECT PHASE: POP 2	THIS PRINT AND ITS COPYRIGHT ARE THE PROPERTY OF ALLO! TECHNOLOGY SDN BHD. Size : A1
-----------	--------------------	--------------------------	---------------------------------------------------------------------------------------------------------------------------------------------------------------------------------------------------------------------------------------------------------------------	---------------------------------------------------------------------------	-----------------------------------------------------------------------------------------	----------------------------------------------------------------------------------------------------------------------------------------------------------------------------------------------------------------	--------------------------------------------------------------------------------------



12C FOC	Installed 1:4 / 1:8 / 1:32 splitter	Insulated Pole (9m)	Suspension	New Manhole (PIT)	Mono Trenching (Meter)	MH1	MH NO.
24C FOC	Installed Patch Cord	Insulated Pole (7.5M)	Tension	New Manhole (RCS)	Temporary Infra (Meter)	TKS-1	Existing TB Pole NO.
48C FOC	FDC	Insulated Pole (6.7M)	Pole Ring	FDP Boundary	Loop / CoT (Meter)	P001	New Pole NO.
96C FOC	Closure	Existing TB Pole	FDP with 1:8 splitter	HDD (Meter)	Active Outdoor Cabinet	CL01	Closure NO.
144C FOC	Existing Closure	Insulated Riser	Existing Manhole	Open Cut (Meter)	FDC NO.	DP1	FDP NO.

ACTUAL HOMEPASS : 123

KEY PLAN:	PROJECT OWNER: 	MAIN CONTRACTOR: PRIVASAT	SUB-CONTRACTOR: ALLO TECHNOLOGY SDN BID Level 3, Unit 309, College of Computer Science & Information Technology (CS&IT), UMPAH, 43000 Kajang, Selangor. Tel: +603-3342-4300 Fax: +603-3342-4321 E-Mail: info@allo.my www.allo.my	PROJECT TITLE: D-SIDE ABA5069 SEKOLAH KEBANGSAAN DEGONG	DRAWING TITLE: CONSTRUCTION DRAWING ABA5069 SEKOLAH KEBANGSAAN DEGONG	Design By : MUHAMMAD FAIZ Date : 1/8/2024
					PROJECT PHASE: POP 2	Drawn By : MUHAMMAD FAIZ Scale : N/A
						Checked By : HAFIZ HAMID Job Number :
						DRAWING NUMBER : ALLO-ABA5069 Sheet : 3
						THIS DRAWING AND ITS COPYRIGHT ARE THE PROPERTY OF ALLO TECHNOLOGY SDN BHD. Size : A1



120 FOC	240 FOC	480 FOC	960 FOC	1440 FOC	isolated 1:4 / 1:8 / 1:32 splitter	isolated Patch Cord	FBC	Closure	Existing Closure	Installed Pole (9m)	Installed Pole (7.5V)	Installed Pole (6.7V)	Existing INH Pole	Installed Riser	Suspension	Tension	Pole Ring	FDP with (1:8) splitter	Existing Manhole	New Manhole (P")	New Manhole (UC7)	FDP Boundary	HDD (Meter)	Open Cut (Meter)	Micro Trenching (Meter)	Temporary Infra (Meter)	Leas / Gai (Meter)	Active Outdoor Cabinet	IDC NO.	MH NO.	TKS-1 Existing INH Pole NO.	PO01 New Pole NO.	CL01 Closure NO.	DPI FDP NO.	ACTUAL HOMEPASS : 123	
KEY PLAN:		PROJECT OWNER:		MAIN CON. RADIO:		SUB-CONTRACTOR:		PROJECT TITLE:		DRAWING TITLE:		Design By : MUHAMMAD FA7		Date : 1/8/2024																						
						<p>D-SIDE ABA5069 SEKOLAH KEBANGSAAN DEGONG</p>		<p>CONSTRUCTION DRAWING ABA5069 SEKOLAH KEBANGSAAN DEGONG</p>		Drawn By : MUHAMMAD FA7		Scale : N/A																								
										Checked By : HAFIZ HAMD		Job Number :																								
								PROJECT PHASE:		DRAWING NUMBER :		Sheet :																								
								POP 2		ALL0-ABA5069		4																								
										THIS PRINT AND ITS COPYRIGHT ARE THE PROPERTY OF ALLO TECHNOLOGY SDN BHD		Size : A1																								