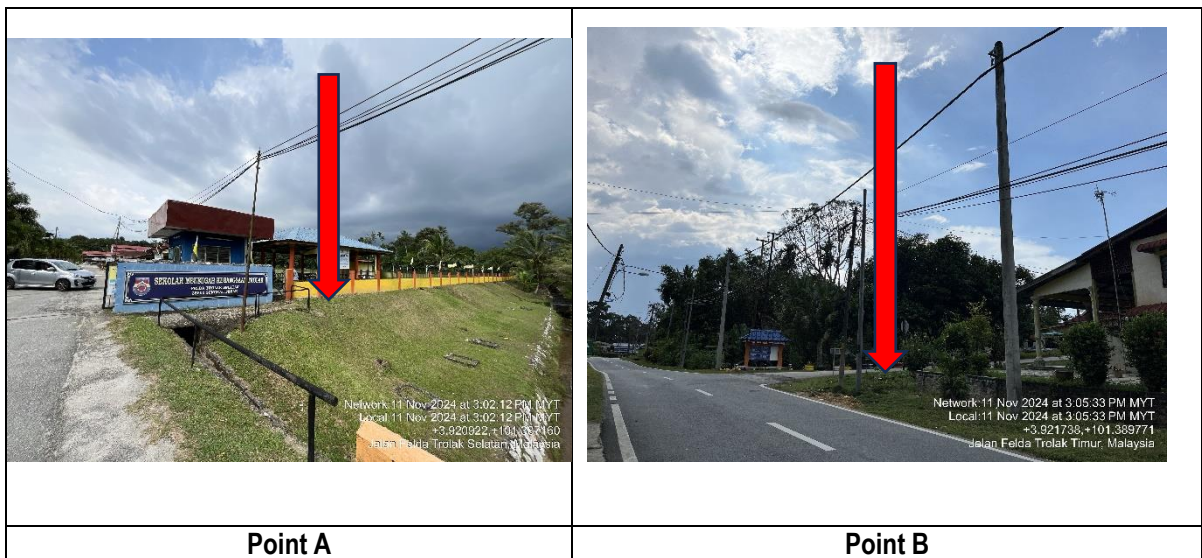


## TECHNICAL PROPOSAL

# POP2 AEA0035 SEKOLAH MENENGAH KEBANGSAAN TROLAK SELATAN 1 (D-SIDE)

<b>Company Name:</b>	<b>STEADCOM SDN BHD</b>
<b>Company Address:</b>	<b>11-3, JALAN PUTERI 2/6, BANDAR PUTERI, 47100 PUCHONG SELANGOR DARUL EHSAN</b>
<b>Prepared By:</b>	<b>Nukman</b>
<b>Date:</b>	<b>17/11/2024</b>



### Starting Point

Site / Boundary Name	Sungkai
Address	Sekolah Menengah Kebangsaan Trolak Selatan ,Felda Trolak Selatan 35600, Sungkai, Perak Darul Ridzwan
District	Batang Padang
Postcode	35600
State	Perak
GPS Coordinate	3.920997, 101.387239
LRD	A

### End Point

Site / Boundary Name	Sungkai
Address	Jalan Timur, 35600 Trolak, Perak
District	Batang Padang
Postcode	35600
State	Perak
GPS Coordinate	3.922533, 101.390731
LRD	B



PROJEK PENYEDIAAN DAN PENYELENGGARAAN POINT OF PRESENCE (POP)  
 FASA 2: HAB INFRASTRUKTUR GENTIAN OPTIK BERHAMPIRAN DENGAN  
 SEKOLAH, KAWASAN PERINDUSTRIAN, PREMIS KERAJAAN DAN KOMUNITI  
 SEKITARNYA OLEH KEMENTERIAN KOMUNIKASI MALAYSIA - ZON UTARA  
 (KKMM.400-11/17/132(1))

**STEADCOM**  
 A member of OCK Group Berhad

## 1.0 Work Summary

No	Proposed Distance and Method	Unit	Qty
1	Horizontal Directional Drilling (HDD)	m	0
2	Carriage Way Open trench (CW)	m	0
3	Grass Verge Open Trenching (GV)	m	0
4	Micro trenching (MT)	m	0
	Total		<b>0m</b>

	Other Information	Unit	Qty
1	Proposed Manhole	EA	0
2	Proposed Pole	EA	83
3	Joint Closure	EA	3
4	Estimated time required for completion	days	60



PROJEK PENYEDIAAN DAN PENYELENGGARAAN POINT OF PRESENCE (POP)  
FASA 2: HAB INFRASTRUKTUR GENTIAN OPTIK BERHAMPIRAN DENGAN  
SEKOLAH, KAWASAN PERINDUSTRIAN, PREMIS KERAJAAN DAN KOMUNITI  
SEKITARNYA OLEH KEMENTERIAN KOMUNIKASI MALAYSIA - ZON UTARA  
(KKMM.400-11/17/132(1))

**STEADCOM**  
A member of OCK Group Berhad

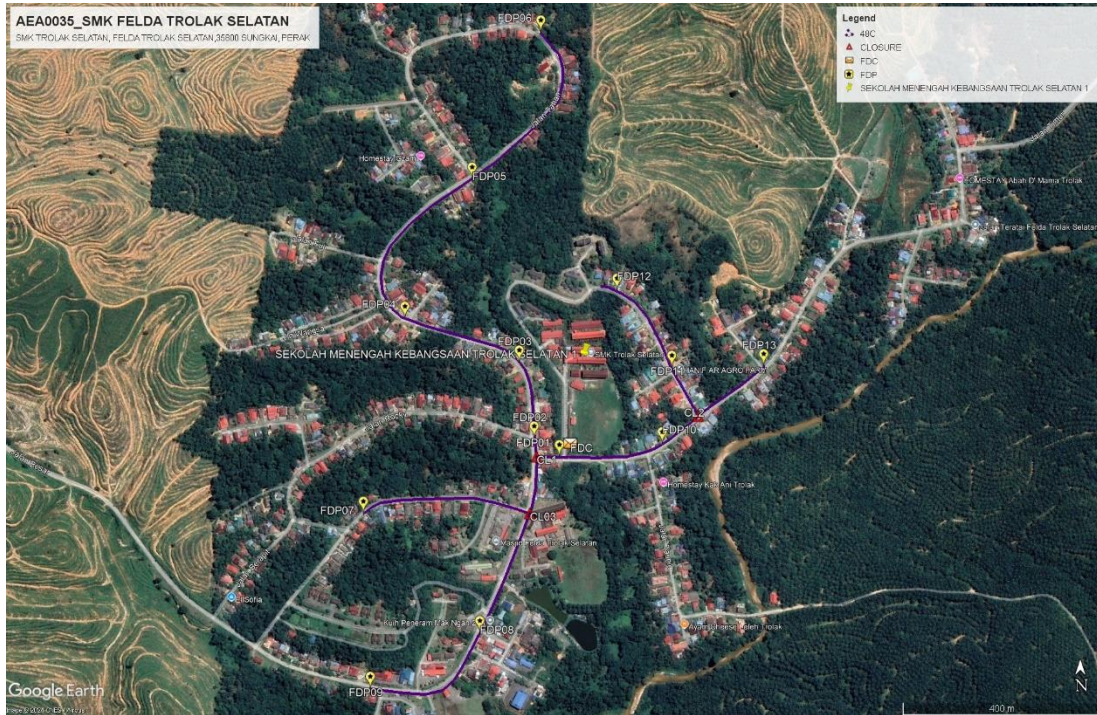
## 2.0 LOCAL AUTHORITY SUMMARY

Daerah Batang Padang

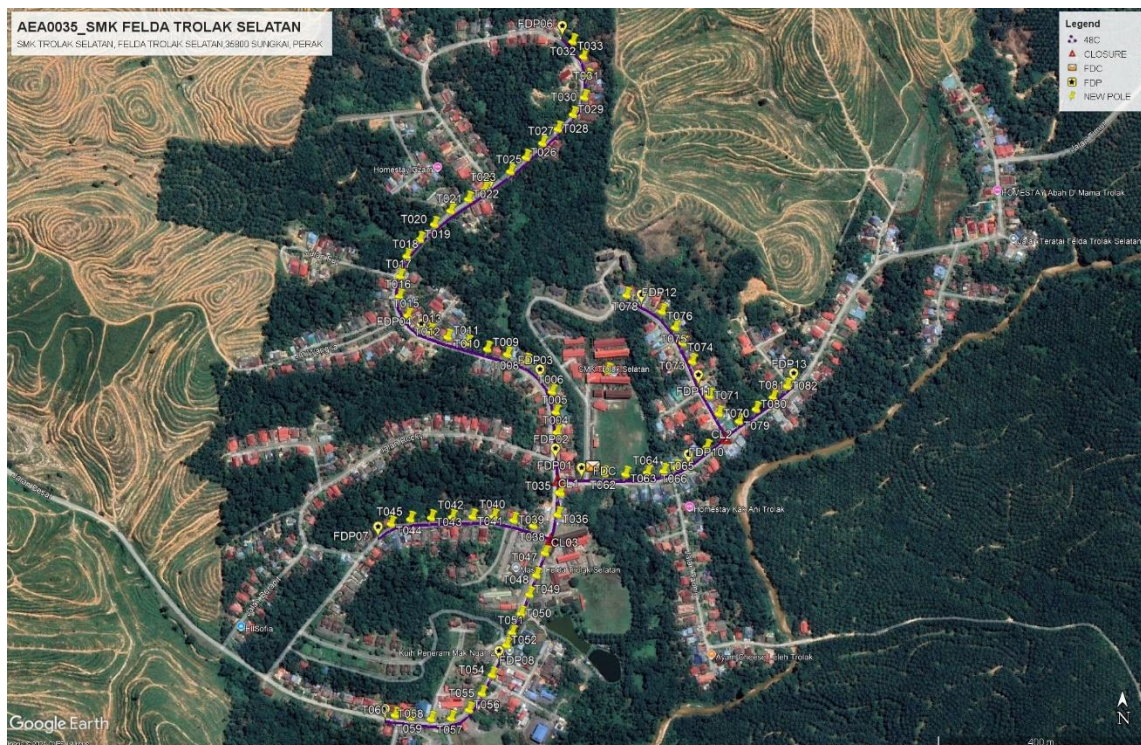
Bil	Items	Owner	Quantity	Distance
1	HDD	JKR	-	-
		Majlis	-	-
		Estate / Private Land	-	-
2	New Pole	JKR	83pc	3074m
		Majlis	-	-
		Estate / Private Land	-	-
3	Existing TNB Pole	JKR	-	-
		Majlis	-	-
		Estate / Private Land	-	-
Total				3074m

### 3.0 SITE PLAN KMZ (Overview site area)

#### 3.1 Proposed FDP and Closure



#### 3.2 Proposed New Pole



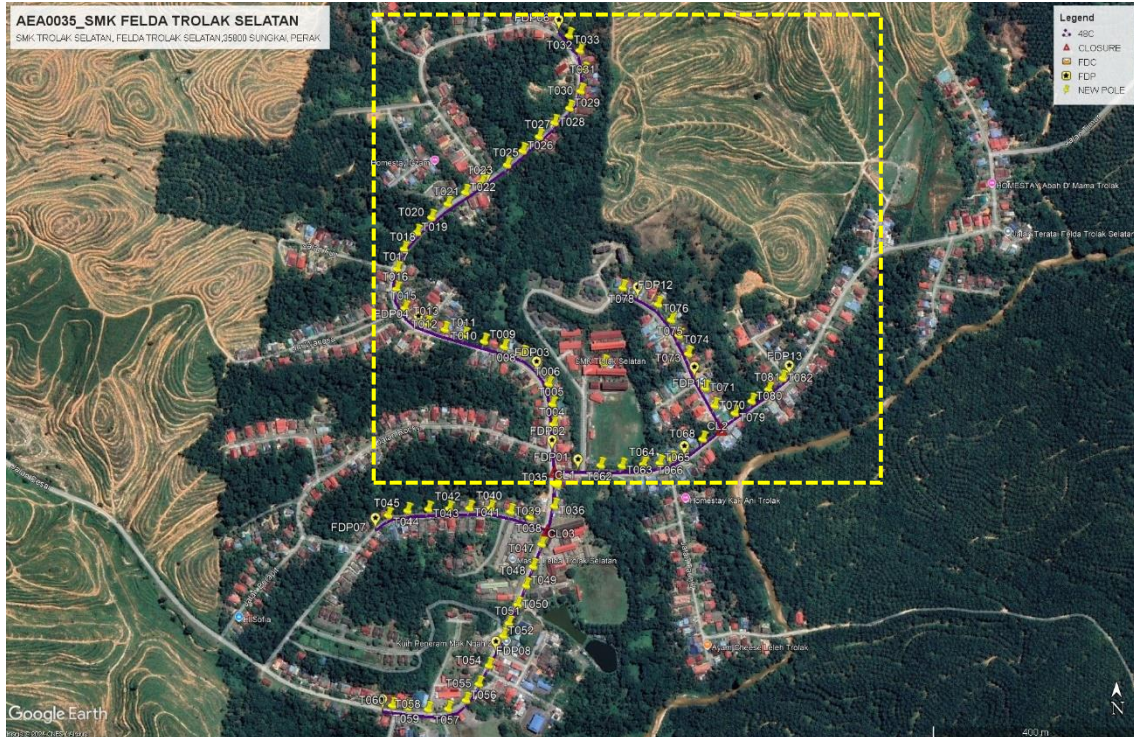
### 3.3 Site Plan KMZ Routing (All Local Authority)



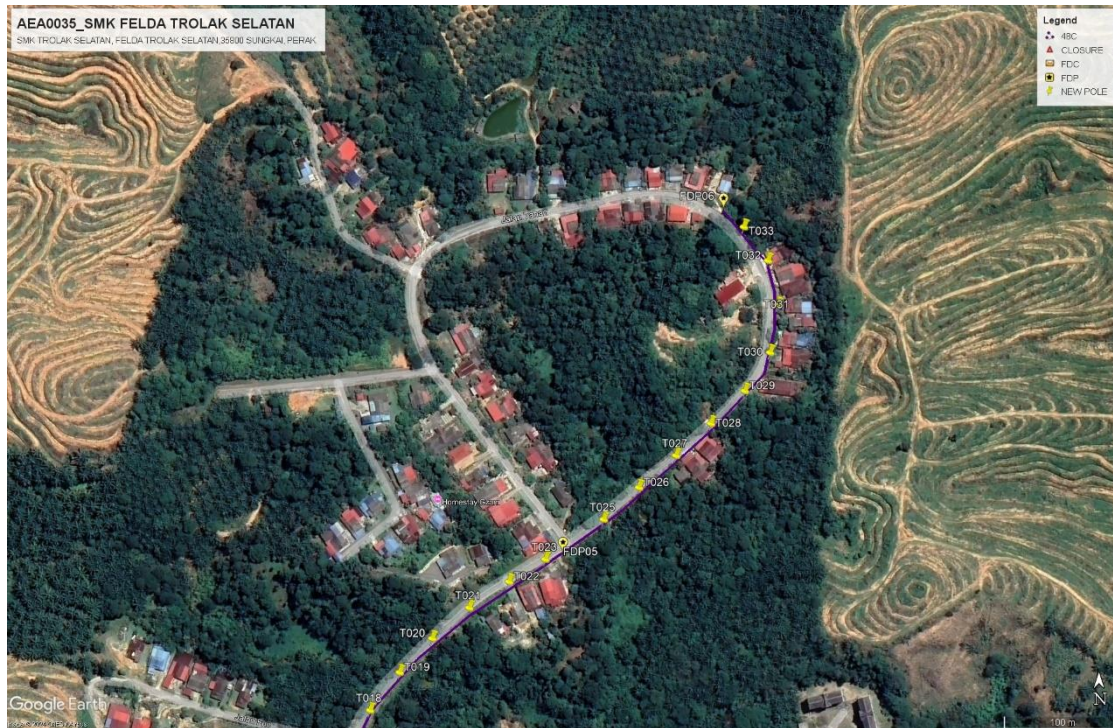
*Purple – JKR Road*

### 3.4 Site Plan – KMZ Routing (All site area)

#### I. Route 1



Route 1.1



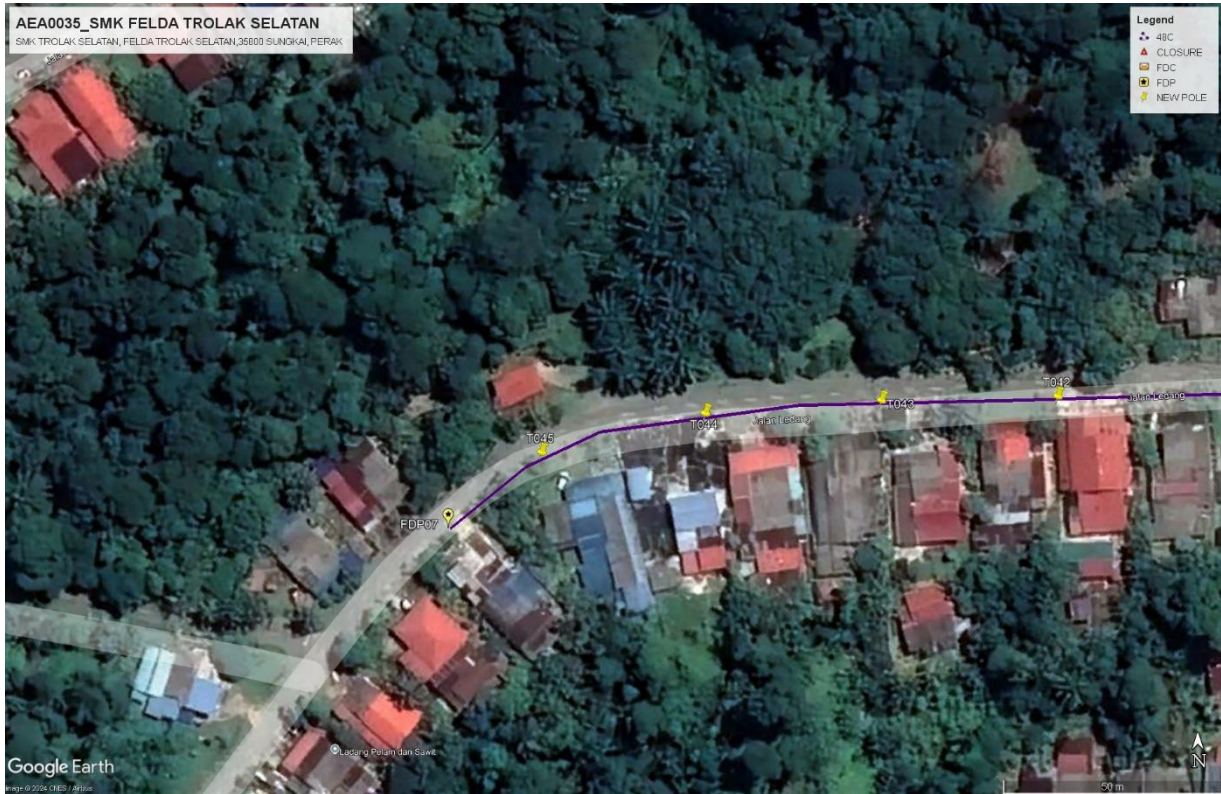
Route: 1.2



Route 1.3



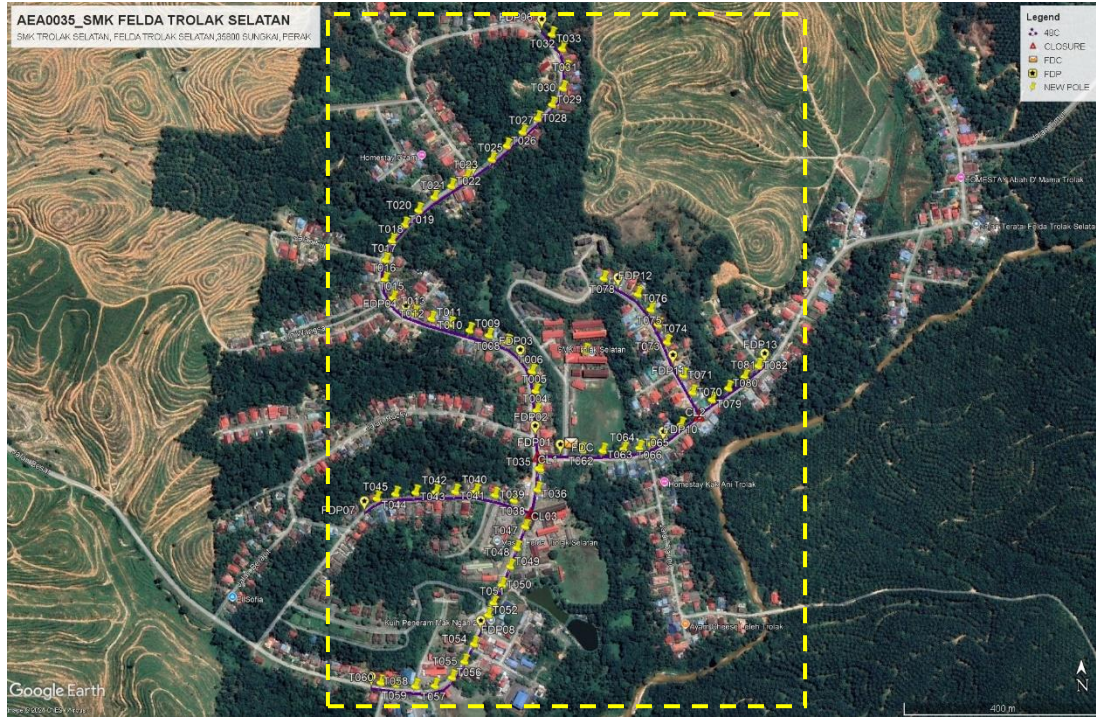
**Route 2.2**



**Route 2.3**



### 3.5 Site Plan – KMZ Routing (Proposed new Pole)



#### 4.0 OVERALL POLE (PROPOSED NEW POLE)

PROPOSED NEW POLE COORDINATE					
NO	LABEL	NO POLE ID	LATITUDE	LONGITUDE	LOCAL AUTHORITY
1	FDC	T000	3.9209982	101.3872385	JKR MUALLIM
2	FDP01	T001	3.9208956	101.3870406	JKR MUALLIM
3	FDP02	T003	3.9212304	101.3865864	JKR MUALLIM
4	FDP03	T007	3.9225988	101.386317	JKR MUALLIM
5	FDP04	T014	3.9233885	101.3842533	JKR MUALLIM
6	FDP05	T024	3.9258973	101.3854663	JKR MUALLIM
7	FDP06	T034	3.9285464	101.3867065	JKR MUALLIM
8	FDP07	T046	3.9198748	101.383502	JKR MUALLIM
9	FDP08	T053	3.9177239	101.3856051	JKR MUALLIM
10	FDP09	T061	3.9167186	101.3836274	JKR MUALLIM
11	FDP10	T067	3.9211279	101.3888978	JKR MUALLIM
12	FDP11	T072	3.9225043	101.3890718	JKR MUALLIM
13	FDP12	T077	3.9238942	101.3880811	JKR MUALLIM
14	FDP13	T083	3.9225323	101.3907293	JKR MUALLIM
15	CL2	T069	3.9216338	101.3895489	JKR MUALLIM
16	CL1	T002	3.9209019	101.3866322	JKR MUALLIM
17	CL03	T037	3.9198795	101.3865087	JKR MUALLIM
18	T004	T004	3.9215973	101.3865725	JKR MUALLIM
19	T005	T005	3.92195	101.3865554	JKR MUALLIM
20	T006	T006	3.9223021	101.3864907	JKR MUALLIM
21	T008	T008	3.9228334	101.3860453	JKR MUALLIM
22	T009	T009	3.9229504	101.3857121	JKR MUALLIM
23	T010	T010	3.9230436	101.3853643	JKR MUALLIM
24	T011	T011	3.9231556	101.3850223	JKR MUALLIM
25	T012	T012	3.9232506	101.3846757	JKR MUALLIM
26	T013	T013	3.9233547	101.3843687	JKR MUALLIM
27	T015	T015	3.9236212	101.38398	JKR MUALLIM
28	T016	T016	3.9239529	101.3838347	JKR MUALLIM
29	T017	T017	3.9243036	101.3838452	JKR MUALLIM
30	T018	T018	3.9246492	101.3839655	JKR MUALLIM
31	T019	T019	3.9249404	101.3841929	JKR MUALLIM
32	T020	T020	3.9252007	101.3844443	JKR MUALLIM
33	T021	T021	3.9254365	101.384729	JKR MUALLIM
34	T022	T022	3.9256372	101.385036	JKR MUALLIM
35	T023	T023	3.9258087	101.3853153	JKR MUALLIM
36	T025	T025	3.9261149	101.385765	JKR MUALLIM
37	T026	T026	3.9263604	101.3860374	JKR MUALLIM
38	T027	T027	3.9266062	101.3863231	JKR MUALLIM
39	T028	T028	3.9268522	101.386593	JKR MUALLIM
40	T029	T029	3.9271036	101.3868547	JKR MUALLIM
41	T030	T030	3.9273996	101.3870494	JKR MUALLIM
42	T031	T031	3.9277658	101.3871088	JKR MUALLIM

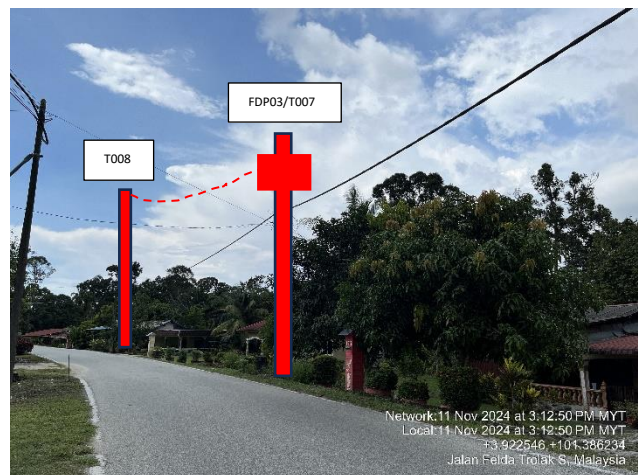
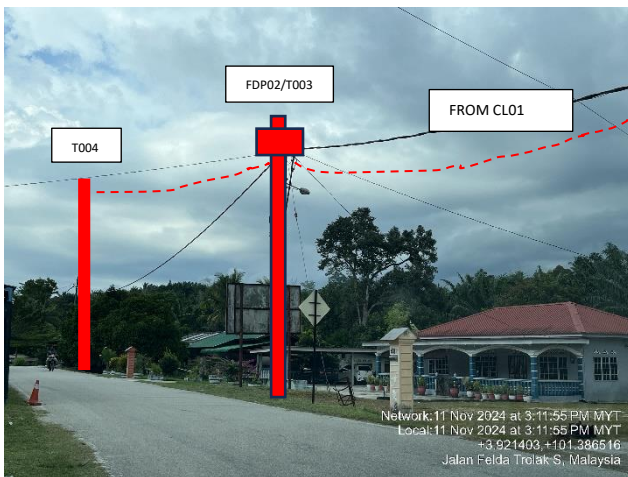
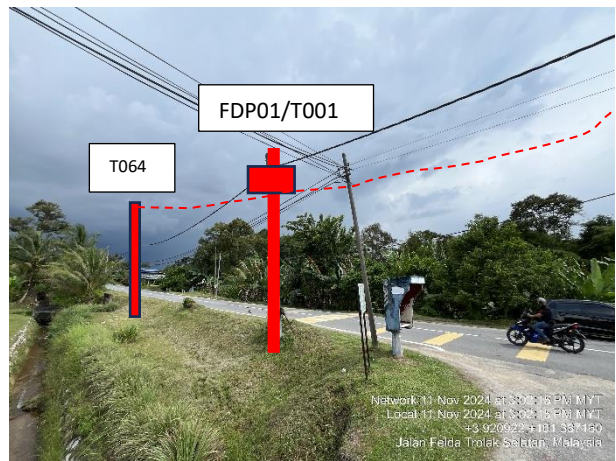


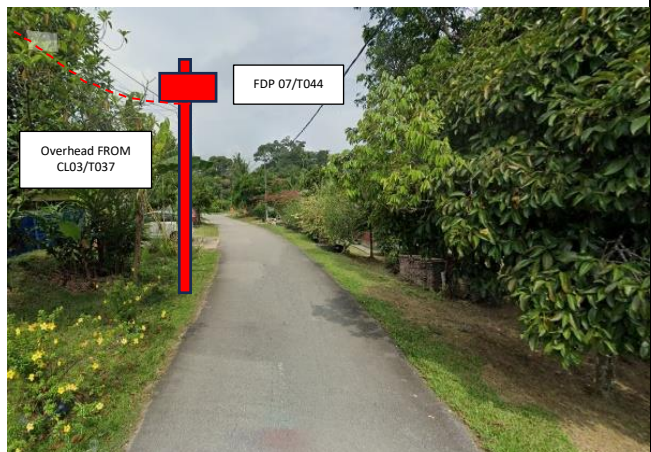
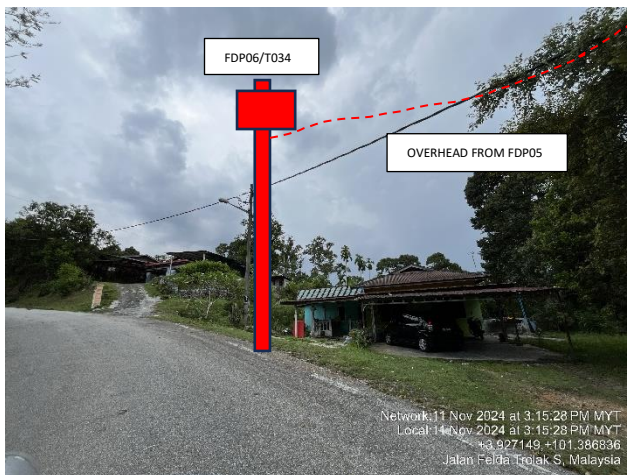
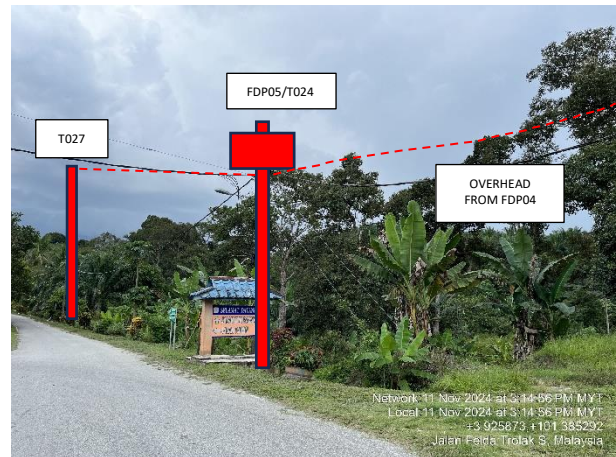
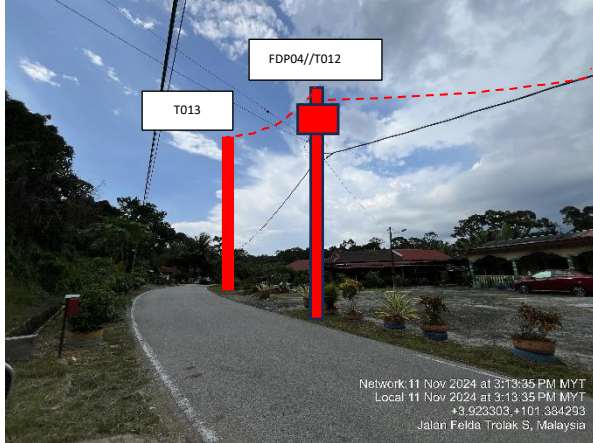
PROJEK PENYEDIAAN DAN PENYELENGGARAAN POINT OF PRESENCE (POP)  
 FASA 2: HAB INFRASTRUKTUR GENTIAN OPTIK BERHAMPIRAN DENGAN  
 SEKOLAH, KAWASAN PERINDUSTRIAN, PREMIS KERAJAAN DAN KOMUNITI  
 SEKITARNYA OLEH KEMENTERIAN KOMUNIKASI MALAYSIA - ZON UTARA  
 (KKMM.400-11/17/132(1))

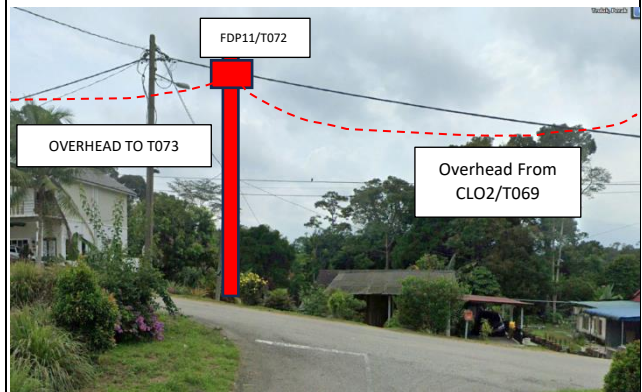
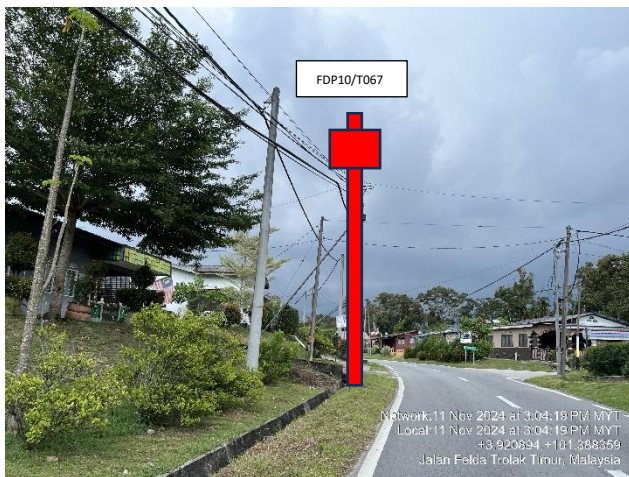
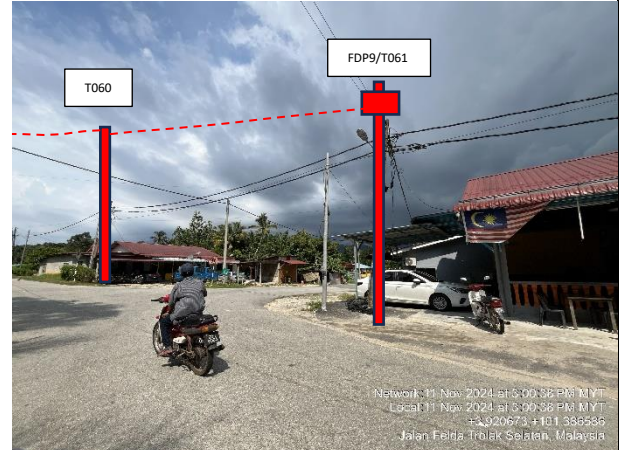
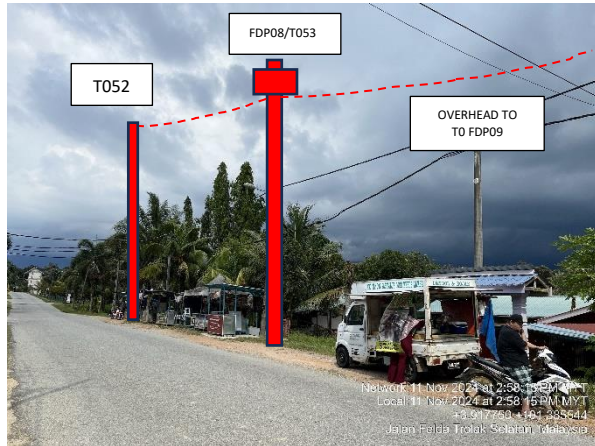


43	T032	T032	3.9281073	101.3870343	JKR MUALLIM
44	T033	T033	3.928367	101.3868483	JKR MUALLIM
45	T035	T035	3.9205319	101.3866188	JKR MUALLIM
46	T047	T047	3.9195133	101.3863681	JKR MUALLIM
47	T048	T048	3.9191256	101.3862176	JKR MUALLIM
48	T049	T049	3.9187924	101.3860975	JKR MUALLIM
49	T050	T050	3.9184592	101.3859499	JKR MUALLIM
50	T051	T051	3.9181338	101.3857965	JKR MUALLIM
51	T052	T052	3.9179156	101.3857008	JKR MUALLIM
52	T054	T054	3.9173983	101.3854473	JKR MUALLIM
53	T055	T055	3.9170784	101.3852724	JKR MUALLIM
54	T056	T056	3.9167951	101.3850475	JKR MUALLIM
55	T057	T057	3.9166456	101.3847361	JKR MUALLIM
56	T058	T058	3.9166354	101.384385	JKR MUALLIM
57	T059	T059	3.9166657	101.3840271	JKR MUALLIM
58	T060	T060	3.9167029	101.3837594	JKR MUALLIM
59	T062	T062	3.9208853	101.3873995	JKR MUALLIM
60	T063	T063	3.9208765	101.3877701	JKR MUALLIM
61	T064	T064	3.9209017	101.3881457	JKR MUALLIM
62	T065	T065	3.9209269	101.3884307	JKR MUALLIM
63	T070	T070	3.9219225	101.3893895	JKR MUALLIM
64	T071	T071	3.9222321	101.389223	JKR MUALLIM
65	T073	T073	3.9228272	101.3889295	JKR MUALLIM
66	T074	T074	3.9231483	101.3887635	JKR MUALLIM
67	T075	T075	3.9234154	101.3886315	JKR MUALLIM
68	T076	T076	3.9236905	101.3884025	JKR MUALLIM
69	T068	T068	3.9213426	101.389181	JKR MUALLIM
70	T066	T066	3.9209938	101.3886368	JKR MUALLIM
71	T079	T079	3.9217917	101.3897418	JKR MUALLIM
72	T080	T080	3.9219996	101.3900365	JKR MUALLIM
73	T081	T081	3.9222055	101.3903311	JKR MUALLIM
74	T082	T082	3.9224012	101.3905767	JKR MUALLIM
75	T036	T036	3.9201753	101.386589	JKR MUALLIM
76	T038	T038	3.919983	101.3861656	JKR MUALLIM
77	T039	T039	3.9200793	101.3858238	JKR MUALLIM
78	T040	T040	3.920143	101.3854767	JKR MUALLIM
79	T041	T041	3.9201381	101.385109	JKR MUALLIM
80	T042	T042	3.9201308	101.3847531	JKR MUALLIM
81	T043	T043	3.9201223	101.3843899	JKR MUALLIM
82	T044	T044	3.9200957	101.3840272	JKR MUALLIM
83	T045	T045	3.9200155	101.3836899	JKR MUALLIM
84	T078	T078	3.9239757	101.3877857	JKR MUALLIM

5.0 SITE PHOTOS- PROPOSED NEW POLE

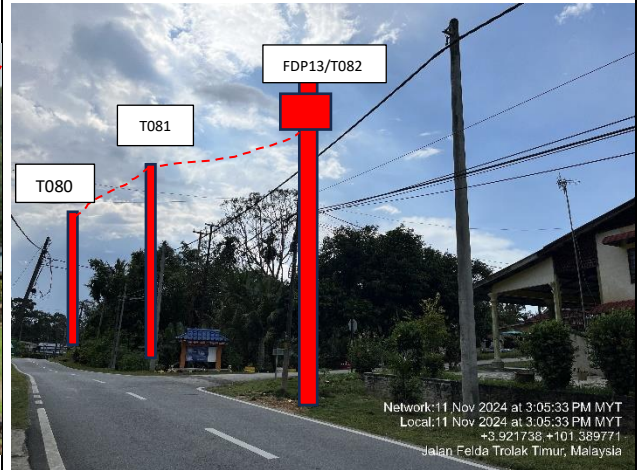
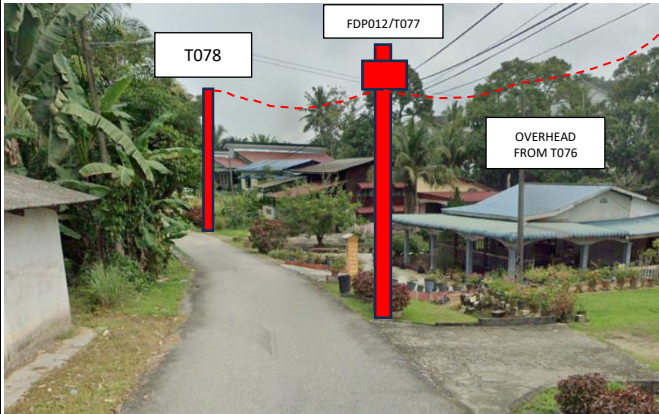








PROJEK PENYEDIAAN DAN PENYELENGGARAAN POINT OF PRESENCE (POP)  
FASA 2: HAB INFRASTRUKTUR GENTIAN OPTIK BERHAMPIRAN DENGAN  
SEKOLAH, KAWASAN PERINDUSTRIAN, PREMIS KERAJAAN DAN KOMUNITI  
SEKITARNYA OLEH KEMENTERIAN KOMUNIKASI MALAYSIA - ZON UTARA  
(KKMM.400-11/17/132(1))



	<p>PROJEK PENYEDIAAN DAN PENYELENGGARAAN POINT OF PRESENCE (POP)  FASA 2: HAB INFRASTRUKTUR GENTIAN OPTIK BERHAMPIRAN DENGAN  SEKOLAH, KAWASAN PERINDUSTRIAN, PREMIS KERAJAAN DAN KOMUNITI  SEKITARNYA OLEH KEMENTERIAN KOMUNIKASI MALAYSIA - ZON UTARA  (KKMM.400-11/17/132(1))</p>	 A member of OCK Group Berhad
-----------------------------------------------------------------------------------	------------------------------------------------------------------------------------------------------------------------------------------------------------------------------------------------------------------------------------------------------------------------------------------------------	---------------------------------------------------------------------------------------------------------------------

**6.0 3<sup>rd</sup> PARTIES DEPENDENCIES**

NO	LOCAL COUNCIL / AUTHORITY	REMARK
1	NA	NA