

TECHNICAL PROPOSAL

POP2 ABA3038 SEKOLAH KEBANGSAAN KUALA GULA (D-SIDE)

| | |
|------------------------|--------------------------------------------------------------------------|
| Company Name | : SEGALA DELIMA (M) SDN BHD |
| Company Address | : No. 8, Jalan Ampang Baru 6B, Pusat Perdagangan Baru, 31350 Ipoh, Perak |
| Prepared By | : Mohamad Helmi |
| Date | : 27/12/2024 |



Point A



Point B

Starting Point

| | |
|----------------------|---------------------------------|
| Site / Boundary Name | : Sekolah Kebangsaan Kuala Gula |
| District | : Kuala Gula, Kuala Kurau |
| Postcode | : 34350 |
| State | : Perak |
| GPS Coordinate | : 4.937630, 100.465544 |
| LRD | : A |

End Point

| | |
|----------------------|---------------------------------|
| Site / Boundary Name | : Sekolah Kebangsaan Kuala Gula |
| Address | : Jalan Kuala Gula |
| District | : Kuala Gula, Kuala Kurau |
| Postcode | : 34350 |
| State | : Perak |
| GPS Coordinate | : 4.932525, 100.466392 |
| LRD | : B |

1.0 WORK SUMMARY

| NO | PROPOSED DISTANCE AND METHOD | UNIT | QUANTITY |
|-------|---------------------------------------|------|----------|
| 1 | Horizontal Directional Drilling (HDD) | m | 0 |
| 2 | Carriage Way Open Trench(CW) | m | 0 |
| 3 | Grass Verge Open Trenching (GV) | m | 0 |
| 4 | Micro Trenching (MT) | m | 0 |
| Total | | | 0 |

| NO | OTHER INFORMATION | UNIT | QUANTITY |
|----|----------------------------------------------------------------------------------|------|----------|
| 1 | Installation of Short Span ADSS Fiber Cables | m | 2622 |
| 2 | Install New Pole | ea | 17 |
| 3 | Install New JRC7 Manhole | ea | 0 |
| 4 | Install GI Riser 100mm | ea | 0 |
| 5 | Install Fiber Distribution Point and Closure (Splicing, Termination and Testing) | ea | 16 |
| 6 | Estimated Time Required for Completion | days | 60 |

2.0 LOCAL AUTHORITY SUMMARY

Daerah Kerian

| NO | ITEMS | Owner | Quantity | Distance (m) |
|---------------------------|----------|-----------------------|----------|--------------|
| 1 | HDD | JKR | - | - |
| | | Majlis | - | - |
| | | Estate / Private Land | - | - |
| 2 | New Pole | JKR | - | - |
| | | Majlis | 82 | 2622 |
| | | Estate / Private Land | - | - |
| Total Distance (m) | | | | 2622 |

3.0 SITE PLAN (KMZ)

3.1 Overview Site Area (Propose New Pole)



3.2 Proposed FDP and Closure



3.3 Site Plan - KMZ Routing (All Local Authority)



Red Colour - JKR

Road Blue Colour - Majlis Road

3.0 PROPOSED NEW MANHOLE

| Proposed New Manhole Coordinate | | | | | |
|---------------------------------|----------------|--------------|----------|-----------|-----------------|
| No. | Manhole Number | Distance (m) | Latitude | Longitude | Local Authority |
| 1 | MH01 | - | - | - | - |
| 2 | MH02 | - | - | - | - |

4.0 PROPOSED NEW POLE

| Existing Pole Coordinate | | | | | |
|--------------------------|-------------|--------------|----------|------------|----------------------|
| No. | Pole Number | Distance (m) | Latitude | Longitude | Local Authority |
| 1 | T001 | 30M | 4.937874 | 100.465511 | Majlis Daerah Kerian |
| 2 | T002 | 30M | 4.937634 | 100.465541 | Majlis Daerah Kerian |
| 3 | T019 | 35M | 4.940660 | 100.468158 | Majlis Daerah Kerian |
| 4 | T020 | 35M | 4.939202 | 100.467840 | Majlis Daerah Kerian |
| 5 | T021 | 35M | 4.939214 | 100.467639 | Majlis Daerah Kerian |
| 6 | T022 | 35M | 4.939424 | 100.467626 | Majlis Daerah Kerian |
| 7 | T023 | 35M | 4.939780 | 100.467635 | Majlis Daerah Kerian |
| 8 | T024 | 35M | 4.940180 | 100.467649 | Majlis Daerah Kerian |
| 9 | T025 | 35M | 4.940444 | 100.467655 | Majlis Daerah Kerian |
| 10 | T026 | 35M | 4.940647 | 100.467668 | Majlis Daerah Kerian |
| 11 | T027 | 35M | 4.940656 | 100.467603 | Majlis Daerah Kerian |
| 12 | T028 | 35M | 4.940693 | 100.467386 | Majlis Daerah Kerian |
| 13 | T029 | 35M | 4.940680 | 100.467079 | Majlis Daerah Kerian |
| 14 | T030 | 35M | 4.940323 | 100.466985 | Majlis Daerah Kerian |
| 15 | T031 | 35M | 4.940005 | 100.466966 | Majlis Daerah Kerian |
| 16 | T032 | 35M | 4.940015 | 100.466750 | Majlis Daerah Kerian |
| 17 | T033 | 35M | 4.940021 | 100.466623 | Majlis Daerah Kerian |
| 18 | T034 | 35M | 4.940038 | 100.466329 | Majlis Daerah Kerian |
| 19 | T035 | 35M | 4.940041 | 100.465990 | Majlis Daerah Kerian |
| 20 | T036 | 35M | 4.940053 | 100.465736 | Majlis Daerah Kerian |
| 21 | T037 | 35M | 4.940214 | 100.465735 | Majlis Daerah Kerian |
| 22 | T038 | 35M | 4.940441 | 100.465735 | Majlis Daerah Kerian |
| 23 | T039 | 35M | 4.940649 | 100.465739 | Majlis Daerah Kerian |
| 24 | T040 | 35M | 4.940646 | 100.466121 | Majlis Daerah Kerian |
| 25 | T041 | 35M | 4.940632 | 100.466500 | Majlis Daerah Kerian |
| 26 | T042 | 35M | 4.940626 | 100.466864 | Majlis Daerah Kerian |
| 27 | T043 | 35M | 4.940606 | 100.466989 | Majlis Daerah Kerian |
| 28 | T044 | 35M | 4.939848 | 100.466964 | Majlis Daerah Kerian |
| 29 | T045 | 35M | 4.939546 | 100.466960 | Majlis Daerah Kerian |
| 30 | T046 | 35M | 4.939245 | 100.467016 | Majlis Daerah Kerian |
| 31 | T047 | 35M | 4.939234 | 100.466663 | Majlis Daerah Kerian |
| 32 | T048 | 35M | 4.937446 | 100.465534 | Majlis Daerah Kerian |
| 33 | T049 | 35M | 4.937129 | 100.465513 | Majlis Daerah Kerian |

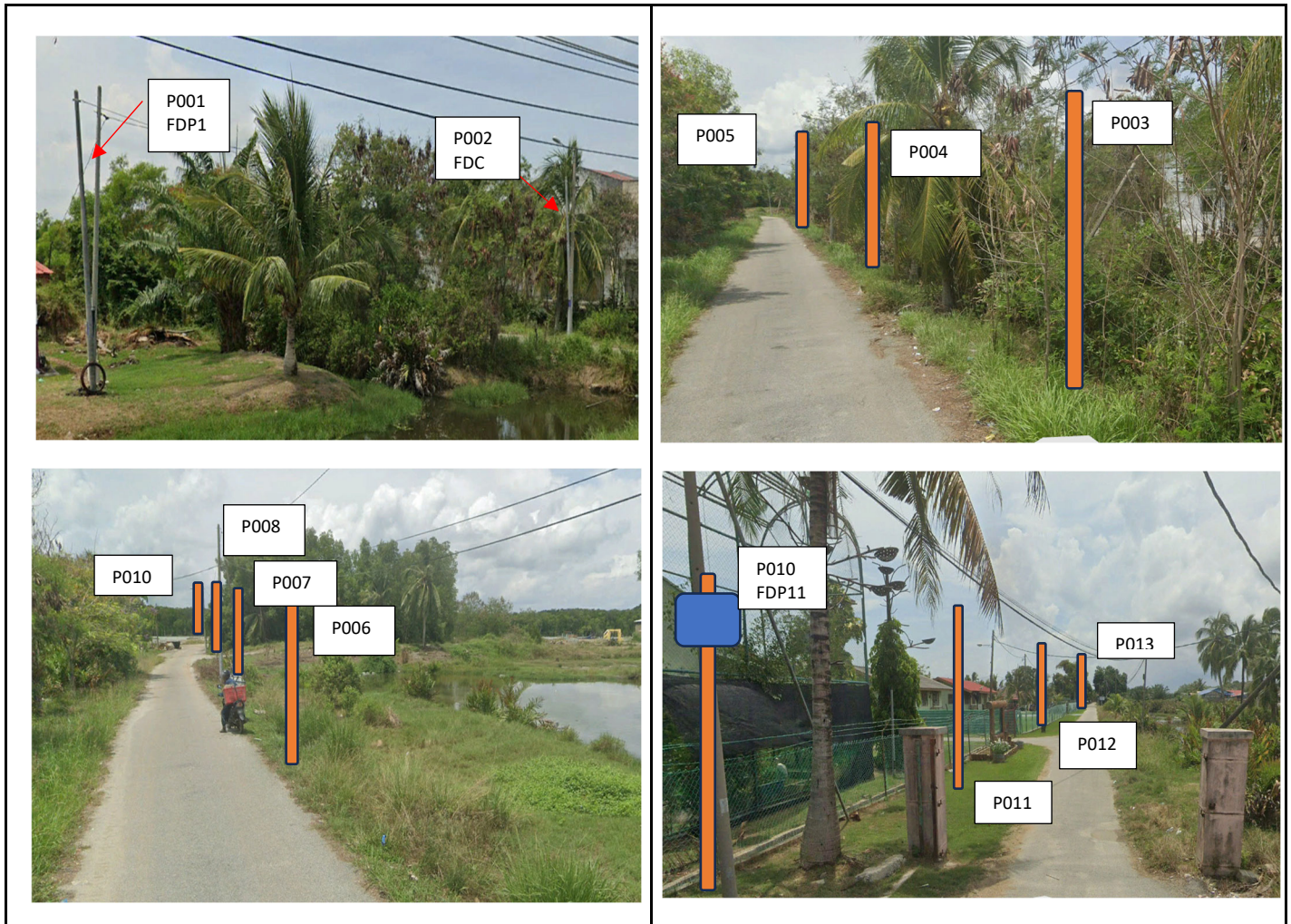
Existing Pole Coordinate

| No. | Pole Number | Distance (m) | Latitude | Longitude | Local Authority |
|-----|-------------|--------------|----------|------------|----------------------|
| 34 | T050 | 35M | 4.936904 | 100.465516 | Majlis Daerah Kerian |
| 35 | T051 | 35M | 4.936691 | 100.465515 | Majlis Daerah Kerian |
| 36 | T052 | 35M | 4.936365 | 100.465507 | Majlis Daerah Kerian |
| 37 | T053 | 35M | 4.936029 | 100.465488 | Majlis Daerah Kerian |
| 38 | T054 | 35M | 4.935793 | 100.465480 | Majlis Daerah Kerian |
| 39 | T055 | 35M | 4.935620 | 100.465499 | Majlis Daerah Kerian |
| 40 | T056 | 35M | 4.935396 | 100.465480 | Majlis Daerah Kerian |
| 41 | T057 | 35M | 4.935252 | 100.465486 | Majlis Daerah Kerian |
| 42 | T058 | 35M | 4.934888 | 100.465461 | Majlis Daerah Kerian |
| 43 | T059 | 35M | 4.934643 | 100.465461 | Majlis Daerah Kerian |
| 44 | T060 | 35M | 4.934265 | 100.465440 | Majlis Daerah Kerian |
| 45 | T061 | 35M | 4.933943 | 100.465435 | Majlis Daerah Kerian |
| 46 | T062 | 35M | 4.933485 | 100.465395 | Majlis Daerah Kerian |
| 47 | T063 | 35M | 4.933249 | 100.465427 | Majlis Daerah Kerian |
| 48 | T064 | 35M | 4.933015 | 100.465416 | Majlis Daerah Kerian |
| 49 | T065 | 35M | 4.932665 | 100.465429 | Majlis Daerah Kerian |
| 50 | T066 | 35M | 4.932653 | 100.465730 | Majlis Daerah Kerian |
| 51 | T067 | 35M | 4.932639 | 100.465958 | Majlis Daerah Kerian |
| 52 | T068 | 35M | 4.932525 | 100.466392 | Majlis Daerah Kerian |
| 53 | T070 | 35M | 4.933240 | 100.466079 | Majlis Daerah Kerian |
| 54 | T071 | 35M | 4.933687 | 100.466072 | Majlis Daerah Kerian |
| 55 | T072 | 35M | 4.933915 | 100.466066 | Majlis Daerah Kerian |
| 56 | T073 | 35M | 4.934228 | 100.466097 | Majlis Daerah Kerian |
| 57 | T074 | 35M | 4.934495 | 100.466123 | Majlis Daerah Kerian |
| 58 | T075 | 30M | 4.934738 | 100.466144 | Majlis Daerah Kerian |
| 59 | T076 | 30M | 4.935180 | 100.466117 | Majlis Daerah Kerian |
| 60 | T077 | 40M | 4.935415 | 100.466128 | Majlis Daerah Kerian |
| 61 | T078 | 30M | 4.935743 | 100.466165 | Majlis Daerah Kerian |
| 62 | T079 | 35M | 4.936030 | 100.466194 | Majlis Daerah Kerian |
| 63 | T080 | 35M | 4.936483 | 100.466152 | Majlis Daerah Kerian |
| 64 | T081 | 35M | 4.936895 | 100.466203 | Majlis Daerah Kerian |
| 65 | T082 | 35M | 4.937136 | 100.466181 | Majlis Daerah Kerian |

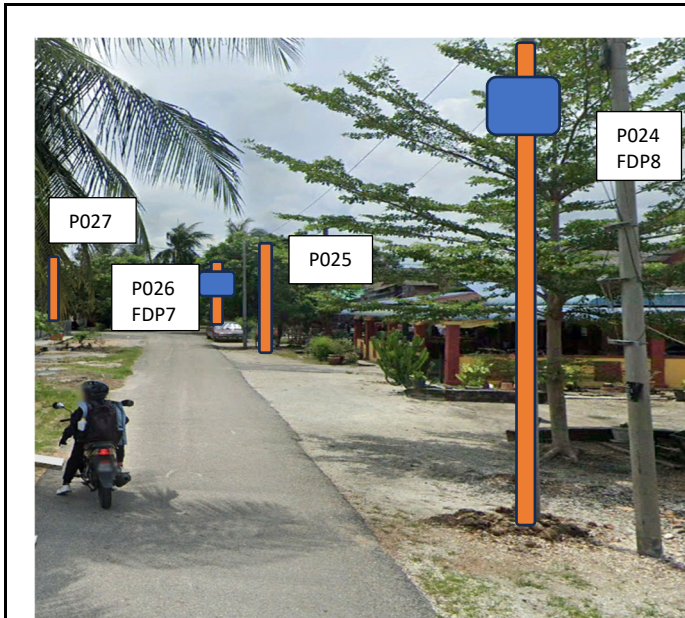
| Proposed New Pole Coordinate | | | | | |
|------------------------------|-------------|--------------|----------|------------|----------------------|
| No. | Pole Number | Distance (m) | Latitude | Longitude | Local Authority |
| 1 | T003 | 40M | 4.937615 | 100.465956 | Majlis Daerah Kerian |
| 2 | T004 | 40M | 4.937632 | 100.466293 | Majlis Daerah Kerian |
| 3 | T005 | 40M | 4.937639 | 100.466695 | Majlis Daerah Kerian |
| 4 | T006 | 40M | 4.937676 | 100.467136 | Majlis Daerah Kerian |
| 5 | T007 | 40M | 4.937747 | 100.467497 | Majlis Daerah Kerian |
| 6 | T008 | 40M | 4.937766 | 100.467833 | Majlis Daerah Kerian |
| 7 | T009 | 40M | 4.937801 | 100.468111 | Majlis Daerah Kerian |
| 8 | T010 | 40M | 4.938017 | 100.468110 | Majlis Daerah Kerian |
| 9 | T011 | 40M | 4.938269 | 100.468109 | Majlis Daerah Kerian |
| 10 | T012 | 40M | 4.938580 | 100.468105 | Majlis Daerah Kerian |
| 11 | T013 | 40M | 4.938868 | 100.468110 | Majlis Daerah Kerian |
| 12 | T014 | 40M | 4.939171 | 100.468113 | Majlis Daerah Kerian |
| 13 | T015 | 40M | 4.939421 | 100.468125 | Majlis Daerah Kerian |
| 14 | T016 | 40M | 4.939725 | 100.468144 | Majlis Daerah Kerian |
| 15 | T017 | 40M | 4.940003 | 100.468142 | Majlis Daerah Kerian |
| 16 | T018 | 40M | 4.940308 | 100.468138 | Majlis Daerah Kerian |
| 17 | T069 | 35M | 4.932962 | 100.465960 | Majlis Daerah Kerian |

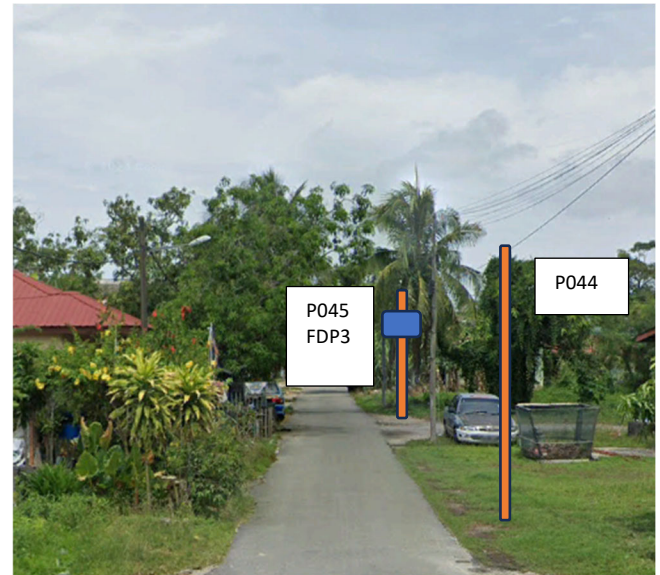
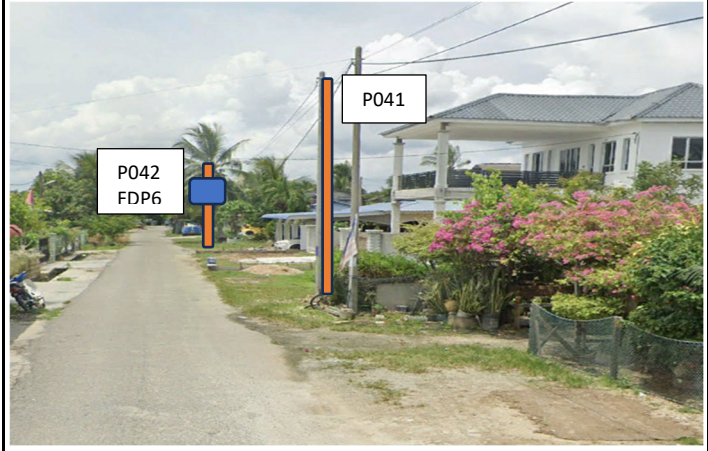
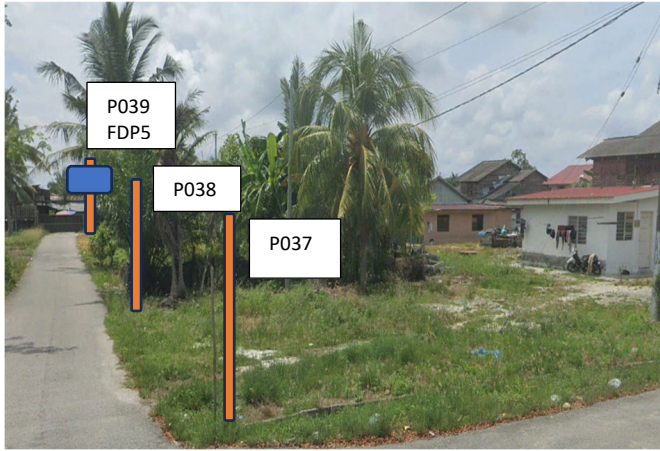
5.0 SITE PHOTOS - PROPOSED HDD AND NEW MANHOLE N/A

6.0 SITE PHOTOS - PROPOSED NEW POLE

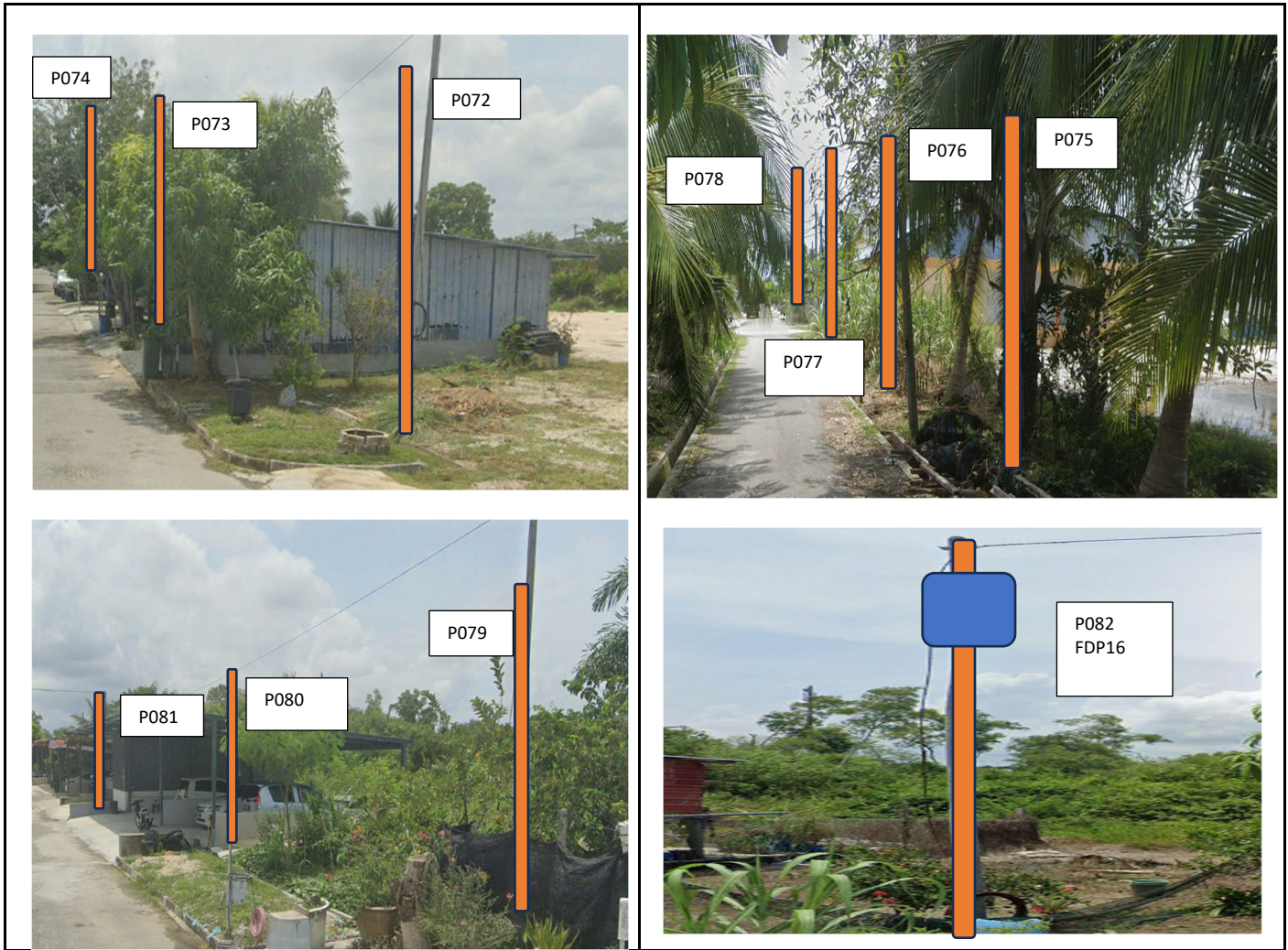




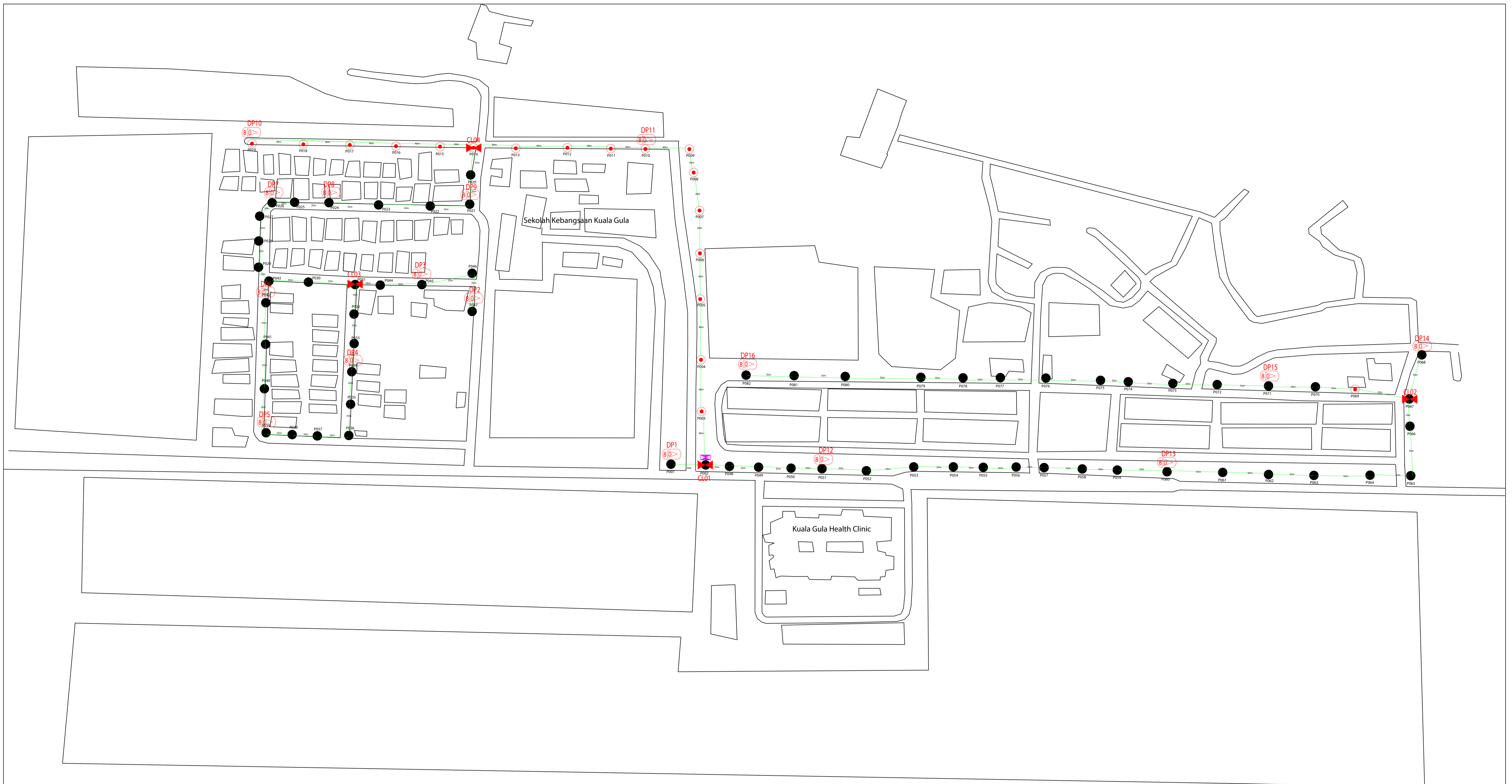






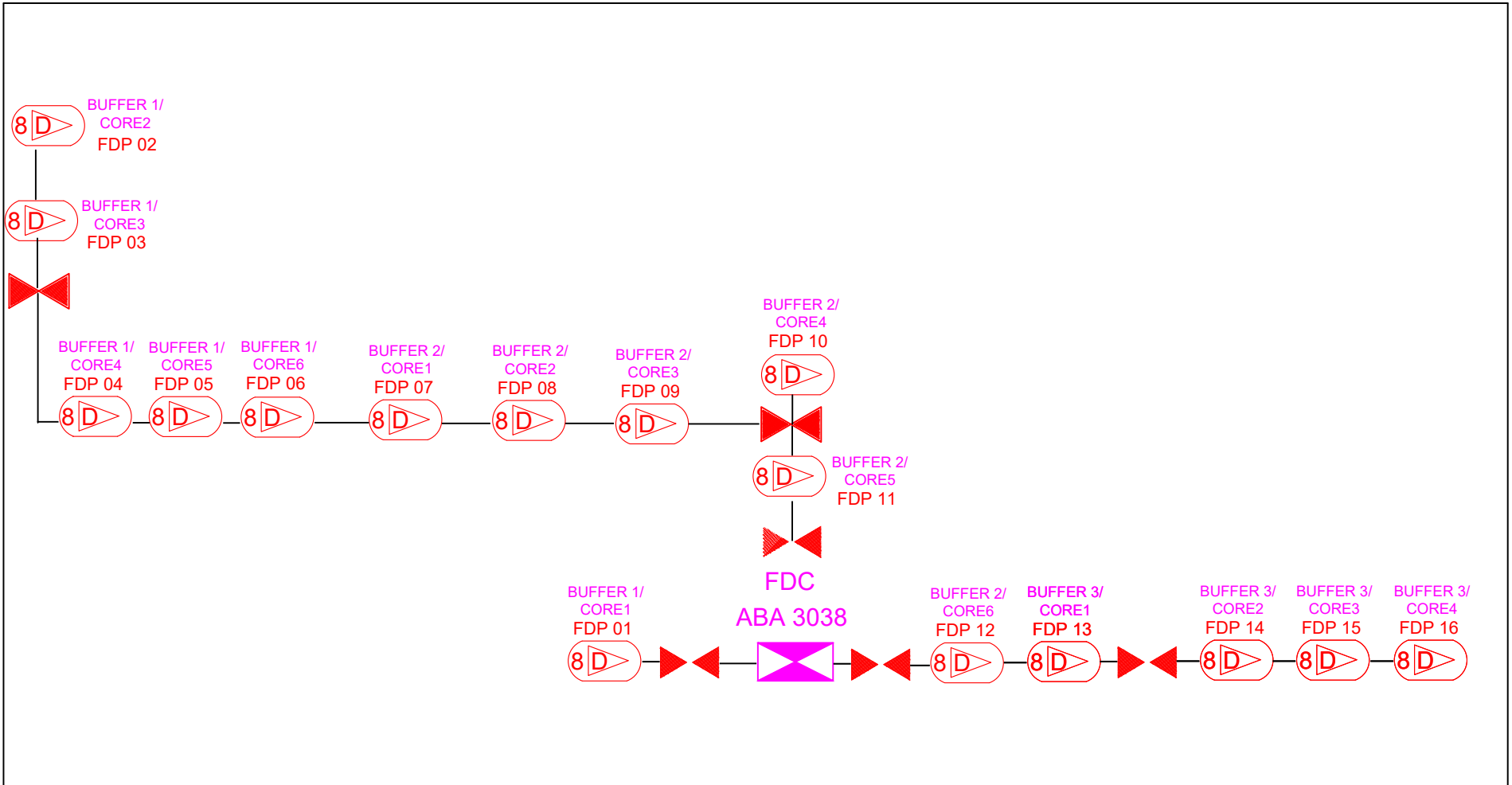


| NO | LOCAL COUNCIL / AUTHORITY | REMARK |
|----|---------------------------|--------|
| 1 | Majlis Daerah Kerian | 2622m |
| 2 | JKR Daerah Kerian | - |



| | | | | | | | |
|----------|-------------------------------------|-----------------------|-------------------------|-------------------|-------------------------|-------|-----------------------|
| 12C FOC | Installed 1:4 / 1:8 / 1:32 splitter | Installed Pole (9m) | Suspension | New Manhole (PIT) | Micro-Trenching (Meter) | MH1 | MH NO. |
| 24C FOC | 2622 Installed Patch Cord | Installed Pole (7.5M) | Tension | New Manhole(JRC7) | Temporary Infra (Meter) | TKS-1 | Existing TNB Pole NO. |
| 48C FOC | FDC | Installed Pole (6.7M) | Pole Ring | FDP Boundary | Loop / Coil (Meter) | P001 | New Pole NO. |
| 96C FOC | Closure | Existing Pole | FDP with (1:8) splitter | HDD (Meter) | # | CL01 | Closure NO. |
| 144C FOC | Existing Closure | Installed Riser | Existing Manhole | Open Cut (Meter) | C01 | DP1 | FDP NO. |

| | | | | | | |
|----------------------------------------------------------------------------------------------------------------------------------------|---------------------------------------------------------------------------------------------------------------------------------------------------------------|---------------------------------------------------------------------------------------------------------------------------------------------------------------------------------------------------------------------------|--------------------------------------------------------------------------------------------------------------------------------------------------------------------------------------------------------------------------|------------------------------------------------------------------------------------------------------------------|--------------------------------------------------------------------------------------------------------------------|-------------------------------------------------------------------------------------------------------------------------------------------------------------------|
| KEY PLAN:  KEMENTERIAN KOMUNIKASI DAN DIGITAL | PROJECT OWNER:  APEX COMMUNICATIONS SDN BHD 187475-V PRIVASAT | MAIN CONTRACTOR:  SEGALA DELIMA (M) SDN BHD NO8, JALAN AMPANG BARU 6B PUSAT PERDAGANGAN AMPANG BARU 31350, IPOH PERAK | SUB-CONTRACTOR:  SEGALA DELIMA (M) SDN BHD NO8, JALAN AMPANG BARU 6B PUSAT PERDAGANGAN AMPANG BARU 31350, IPOH PERAK | PROJECT TITLE: CONTRACT FOR SURVEY TECHNICAL PROPOSE AND WAYLEAVE & PERMITTING APPROVAL - POP 2 PROJECT | DRAWING TITLE: ABA3038 SEKOLAH KEBANGSAAN KUALA GULA PROJECT PHASE: POP 2 PROJECT | Design By : HELMI Drawn By : HELMI Checked By : DRAWING NUMBER : Date : 28 DEC 2024 Scale : 1 : 5000 Job Number : Sheet : 1 / 1 Size : A1 |
|----------------------------------------------------------------------------------------------------------------------------------------|---------------------------------------------------------------------------------------------------------------------------------------------------------------|---------------------------------------------------------------------------------------------------------------------------------------------------------------------------------------------------------------------------|--------------------------------------------------------------------------------------------------------------------------------------------------------------------------------------------------------------------------|------------------------------------------------------------------------------------------------------------------|--------------------------------------------------------------------------------------------------------------------|-------------------------------------------------------------------------------------------------------------------------------------------------------------------|



| | | | | | | | |
|----------|-------------------------------------|-----------------------|-------------------------|-------------------|-------------------------|-------|-----------------------|
| 12C FOC | Installed 1:4 / 1:8 / 1:32 splitter | Installed Pole (9m) | Suspension | New Manhole (PIT) | Micro-Trenching (Meter) | MH1 | MH NO. |
| 24C FOC | Installed Patch Cord | Installed Pole (7.5M) | Tension | New Manhole(RC7) | Temporary Infra (Meter) | TNS-1 | Existing TNB Pole NO. |
| 48C FOC | FDC | Installed Pole (6.7M) | Pole Ring | FDP Boundary | Loop / Coil (Meter) | PS01 | New Pole NO. |
| 96C FOC | Closure | Existing TNB Pole | FDP with (1:8) splitter | HDD (Meter) | Active Outdoor Cabinet | CL01 | Closure NO. |
| 144C FOC | Existing Closure | Installed Riser | Existing Manhole | Open Cut (Meter) | FDC NO. | DPT | FDP NO. |

ACTUAL HOMEPASS :

| | | | | | | | |
|-----------|--------------------|----------------------|---------------------|------------------------------------------------------------|----------------------------------------------|------------------|-------------------|
| KEY PLAN: | PROJECT OWNER: | MAIN CONTRACTOR: | SUB-CONTRACTOR: | PROJECT TITLE: ABA3038 SEKOLAH KEBANGSAAN KUALA GULA | DRAWING TITLE: CORE ASSIGNMENT DRAWING | Design By : | Date : 9 NOV 2024 |
| | | | | | PROJECT PHASE: POP 2 | Drawn By : | Scale : 1 : 5000 |
| | | | | | | Checked By : | Job Number : |
| | | | | | | DRAWING NUMBER : | Sheet : 1 / 1 |
| | | | | | | | Size : A1 |