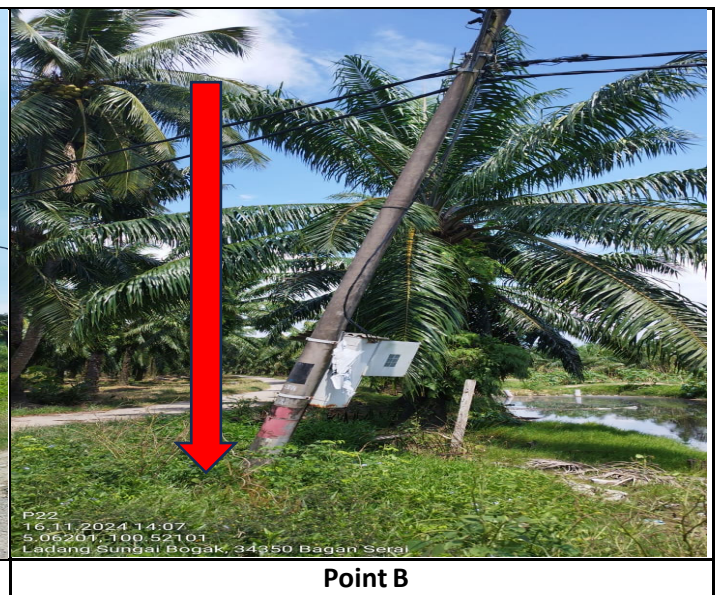
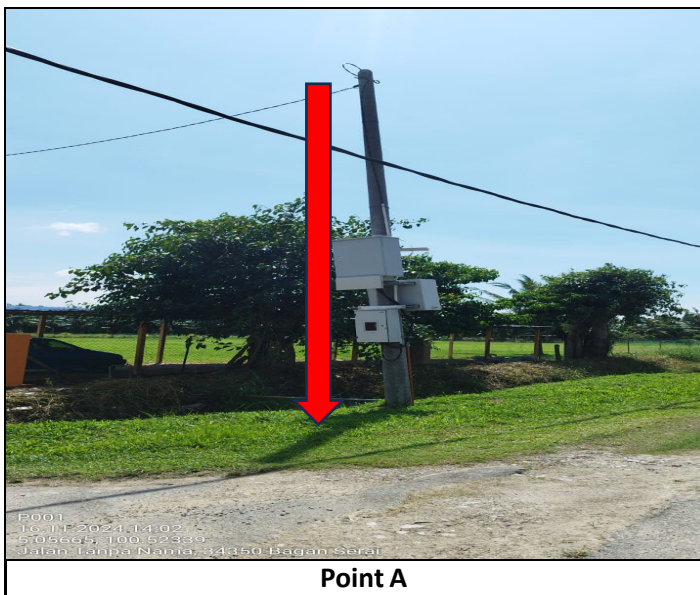


TECHNICAL PROPOSAL

POP2 ABD3064 SEKOLAH JENIS KEBANGSAAN (TAMIL) LADANG SUNGAI BOGAK (D-SIDE)

Company Name	:	SEGALA DELIMA (M) SDN BHD
Company Address	:	No. 8, Jalan Ampang Baru 6B, Pusat Perdagangan Baru, 31350 Ipoh, Perak
Prepared By	:	Mohamad Helmi
Date	:	02/12/2024



Starting Point

Site / Boundary Name	:	Sekolah Jenis Kebangsaan (T) Ladang Sungai Bogak
District	:	Bagan Serai
Postcode	:	34300
State	:	Perak
GPS Coordinate	:	5.056616 100.523370
LRD	:	A

End Point

Site / Boundary Name	:	Sekolah Jenis Kebangsaan (T) Ladang Sungai Bogak
Address	:	Tali Ayer Estet
District	:	Bagan Serai
Postcode	:	34300
State	:	Perak
GPS Coordinate	:	5.059040 100.520010
LRD	:	B

1.0 WORK SUMMARY

NO	PROPOSED DISTANCE AND METHOD	UNIT	QUANTITY
1	Horizontal Directional Drilling (HDD)	m	0
2	Carriage Way Open Trench(CW)	m	0
3	Grass Verge Open Trenching (GV)	m	0
4	Micro Trenching (MT)	m	0
Total			0

NO	OTHER INFORMATION	UNIT	QUANTITY
1	Installation of Short Span ADSS Fiber Cables	m	2473
2	Install New Pole	ea	87
3	Install New JRC7 Manhole	ea	0
4	Install GI Riser 100mm	ea	0
5	Install Fiber Distribution Point and Closure (Splicing, Termination and Testing)	ea	16
6	Estimated Time Required for Completion	days	60

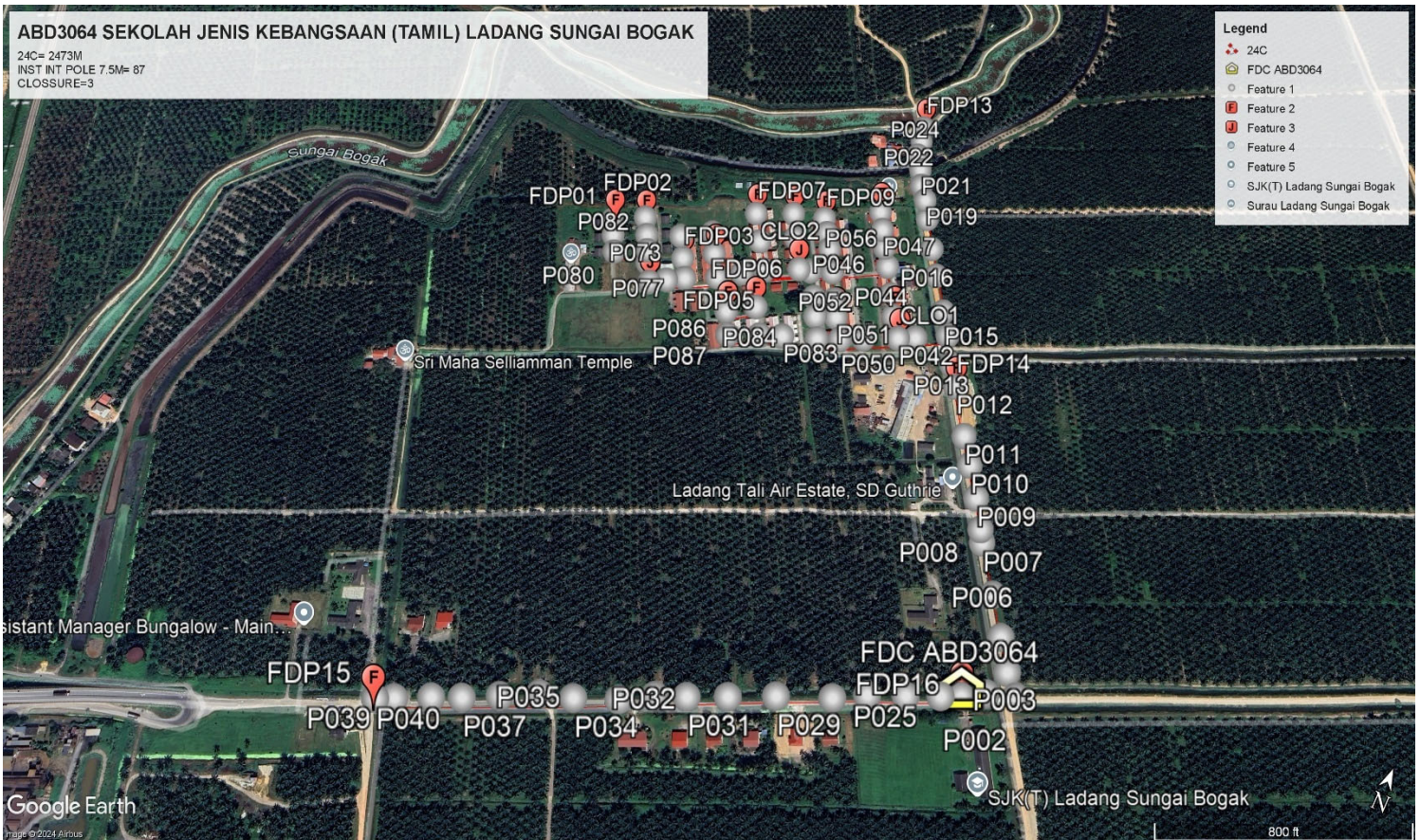
2.0 LOCAL AUTHORITY SUMMARY

Daerah Kerian

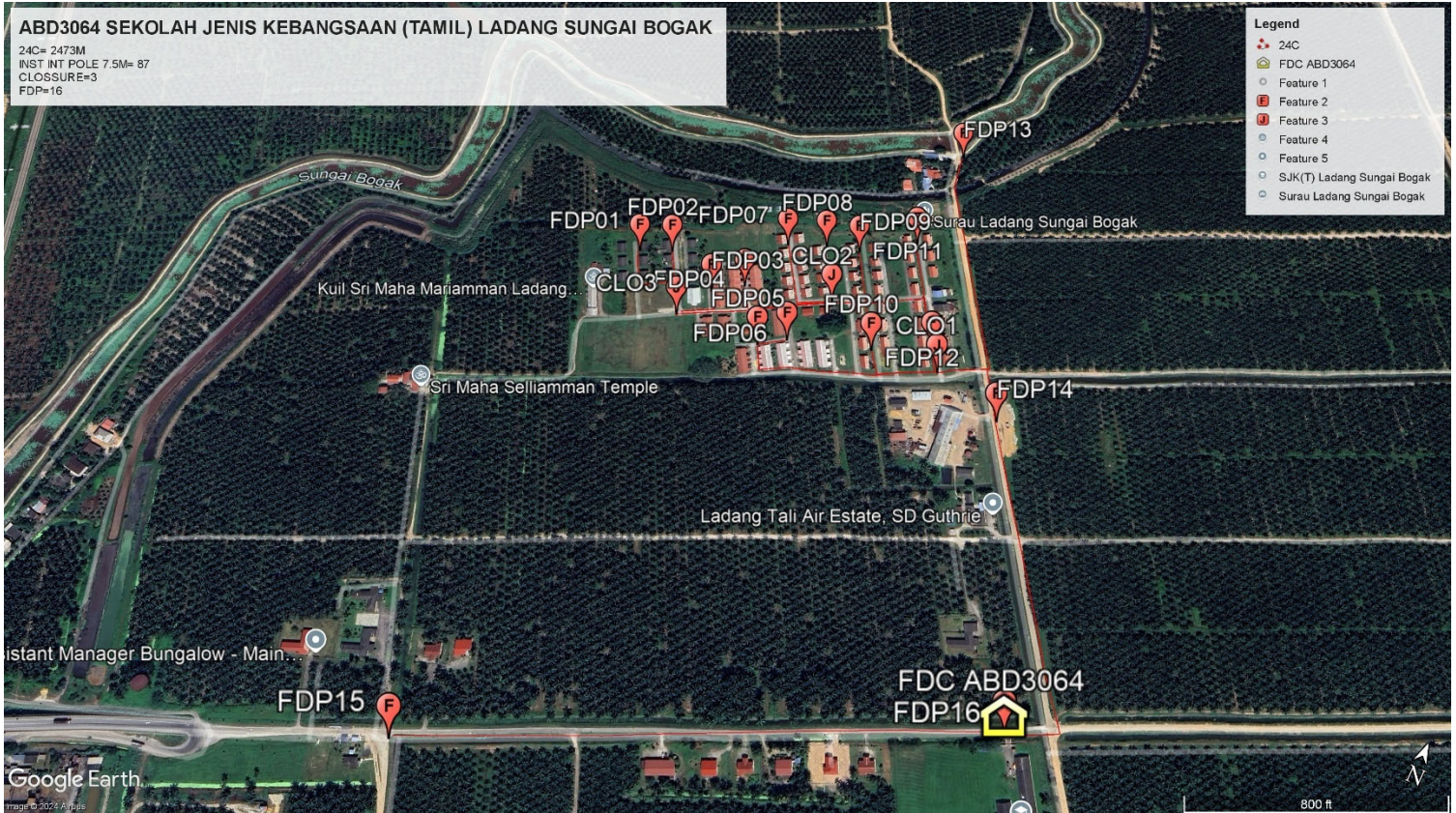
NO	ITEMS	Owner	Quantity	Distance (m)
1	HDD	JKR	-	-
		Majlis	-	-
		Estate / Private Land	-	-
2	New Pole	JKR	-	-
		Majlis	-	-
		Estate / Private Land	87	2473
Total Distance (m)				2473

3.0 SITE PLAN (KMZ)

3.1 Overview Site Area (Propose New Pole)



3.2 Proposed FDP and Closure



3.3 Site Plan - KMZ Routing (All Local Authority)



Red Colour - JKR

Road Blue Colour - Majlis Road

Yellow Colour - Estate / Private Land

3.0 PROPOSED NEW MANHOLE

Proposed New Manhole Coordinate					
No.	Manhole Number	Distance (m)	Latitude	Longitude	Local Authority
1	MH01	-	-	-	-
2	MH02	-	-	-	-

4.0 PROPOSED NEW POLE

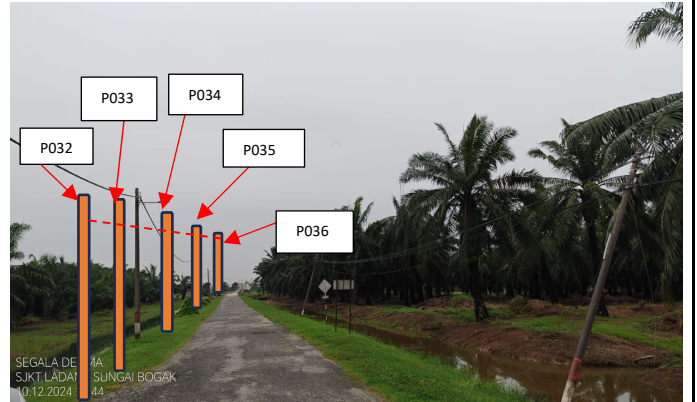
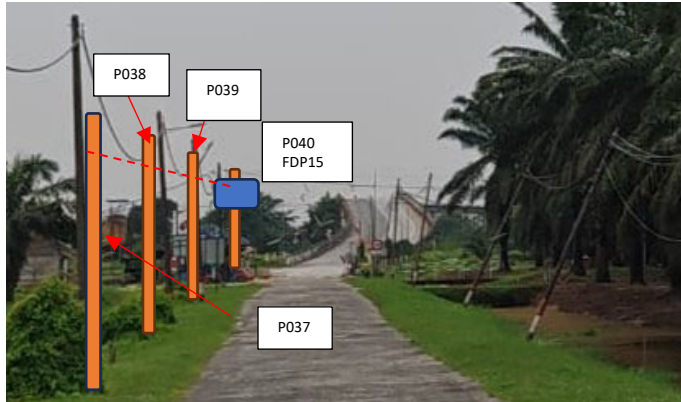
Proposed New Pole Coordinate					
No.	Pole Number	Distance (m)	Latitude	Longitude	Local Authority
1	T001	25M	5.056616	100.523370	Estate SD Guthrie
2	T002	30M	5.056725	100.523563	Estate SD Guthrie
3	T003	25M	5.056807	100.523815	Estate SD Guthrie
4	T004	26M	5.056979	100.523676	Estate SD Guthrie
5	T005	35M	5.057250	100.523529	Estate SD Guthrie
6	T006	42M	5.057595	100.523342	Estate SD Guthrie
7	T007	56M	5.058027	100.523095	Estate SD Guthrie
8	T008	20M	5.058145	100.523041	Estate SD Guthrie
9	T009	35M	5.058428	100.522903	Estate SD Guthrie
10	T010	36M	5.058722	100.522741	Estate SD Guthrie
11	T011	34M	5.059087	100.522551	Estate SD Guthrie
12	T012	59M	5.059441	100.522354	Estate SD Guthrie
13	T013	37M	5.059692	100.522214	Estate SD Guthrie
14	T014	32M	5.059990	100.522074	Estate SD Guthrie
15	T015	49M	5.060236	100.521942	Estate SD Guthrie
16	T016	37M	5.060624	100.521727	Estate SD Guthrie
17	T017	42M	5.060915	100.521575	Estate SD Guthrie
18	T018	28M	5.061251	100.521402	Estate SD Guthrie
19	T019	22M	5.061474	100.521297	Estate SD Guthrie
20	T020	25M	5.061640	100.521193	Estate SD Guthrie
21	T021	26M	5.061837	100.521112	Estate SD Guthrie
22	T022	25M	5.062017	100.521013	Estate SD Guthrie
23	T023	30M	5.062213	100.520991	Estate SD Guthrie
24	T024	30M	5.062414	100.520947	Estate SD Guthrie
25	T025	35M	5.056542	100.523205	Estate SD Guthrie
26	TP26	37M	5.056418	100.522922	Estate SD Guthrie
27	T027	36M	5.056279	100.522609	Estate SD Guthrie
28	T028	45M	5.056128	100.522338	Estate SD Guthrie
29	T029	45M	5.055935	100.521878	Estate SD Guthrie
30	T030	39M	5.055758	100.521491	Estate SD Guthrie
31	T031	30M	5.055606	100.521161	Estate SD Guthrie
32	T032	36M	5.055493	100.520904	Estate SD Guthrie
33	T033	45M	5.055327	100.520629	Estate SD Guthrie

Proposed New Pole Coordinate					
No.	Pole Number	Distance (m)	Latitude	Longitude	Local Authority
34	T034	33M	5.055176	100.520256	Estate SD Guthrie
35	T035	39M	5.055081	100.519971	Estate SD Guthrie
36	T036	39M	5.054922	100.519657	Estate SD Guthrie
37	T037	30M	5.054772	100.519356	Estate SD Guthrie
38	T038	39M	5.054663	100.519107	Estate SD Guthrie
39	T039	25M	5.054522	100.518812	Estate SD Guthrie
40	T040	25M	5.054448	100.518664	Estate SD Guthrie
41	T041	25M	5.059832	100.521779	Estate SD Guthrie
42	T042	33M	5.059755	100.521617	Estate SD Guthrie
43	T043	29M	5.059980	100.521482	Estate SD Guthrie
44	T044	39M	5.060205	100.521370	Estate SD Guthrie
45	T045	27M	5.060511	100.521220	Estate SD Guthrie
46	T046	28M	5.060723	100.521104	Estate SD Guthrie
47	T047	28M	5.060928	100.521005	Estate SD Guthrie
48	T048	28M	5.061142	100.520902	Estate SD Guthrie
49	T049	26M	5.059602	100.521294	Estate SD Guthrie
50	T050	30M	5.059494	100.521077	Estate SD Guthrie
51	T051	30M	5.059712	100.520947	Estate SD Guthrie
52	T052	35M	5.059899	100.520854	Estate SD Guthrie
53	T053	32M	5.060203	100.520708	Estate SD Guthrie
54	T054	25M	5.060458	100.520577	Estate SD Guthrie
55	T055	25M	5.060640	100.520473	Estate SD Guthrie
56	T056	26M	5.060806	100.520376	Estate SD Guthrie
57	T057	29M	5.059394	100.520862	Estate SD Guthrie
58	T058	27M	5.059630	100.520745	Estate SD Guthrie
59	T059	35M	5.059833	100.520647	Estate SD Guthrie
60	T060	20M	5.060113	100.520492	Estate SD Guthrie
61	T061	45M	5.060084	100.520375	Estate SD Guthrie
62	T062	35M	5.060441	100.520185	Estate SD Guthrie
63	T063	41M	5.060723	100.520047	Estate SD Guthrie
64	T064	44M	5.059920	100.520046	Estate SD Guthrie
65	T065	30M	5.060247	100.519852	Estate SD Guthrie
66	T066	33M	5.060563	100.519671	Estate SD Guthrie
67	T067	29M	5.059797	100.519840	Estate SD Guthrie
68	T068	32M	5.059653	100.519612	Estate SD Guthrie
69	T069	29M	5.059912	100.519463	Estate SD Guthrie
70	T070	29M	5.060148	100.519334	Estate SD Guthrie
71	T071	31M	5.059506	100.519303	Estate SD Guthrie
72	T072	21M	5.059726	100.519177	Estate SD Guthrie
73	T073	21M	5.059962	100.519041	Estate SD Guthrie
74	T074	25M	5.059404	100.519137	Estate SD Guthrie
75	T075	25M	5.059306	100.518982	Estate SD Guthrie

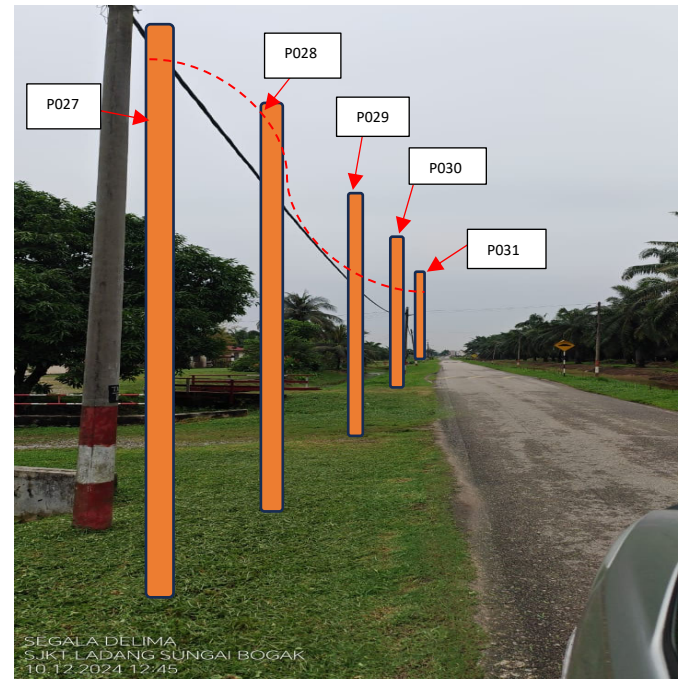
Proposed New Pole Coordinate					
No.	Pole Number	Distance (m)	Latitude	Longitude	Local Authority
76	T076	20M	5.059516	100.518854	Estate SD Guthrie
77	T077	25M	5.059648	100.518792	Estate SD Guthrie
78	T078	25M	5.059815	100.518704	Estate SD Guthrie
79	T079	25M	5.060008	100.518592	Estate SD Guthrie
80	T080	26M	5.059482	100.518477	Estate SD Guthrie
81	T081	24M	5.059661	100.518374	Estate SD Guthrie
82	T082	28M	5.059833	100.518282	Estate SD Guthrie
83	T083	38M	5.059255	100.520531	Estate SD Guthrie
84	T084	36M	5.059163	100.520317	Estate SD Guthrie
85	T085	33M	5.059469	100.520139	Estate SD Guthrie
86	T086	35M	5.059308	100.519876	Estate SD Guthrie
87	T087	35M	5.059040	100.520010	Estate SD Guthrie

5.0 SITE PHOTOS - PROPOSED HDD AND NEW MANHOLE (N/A)

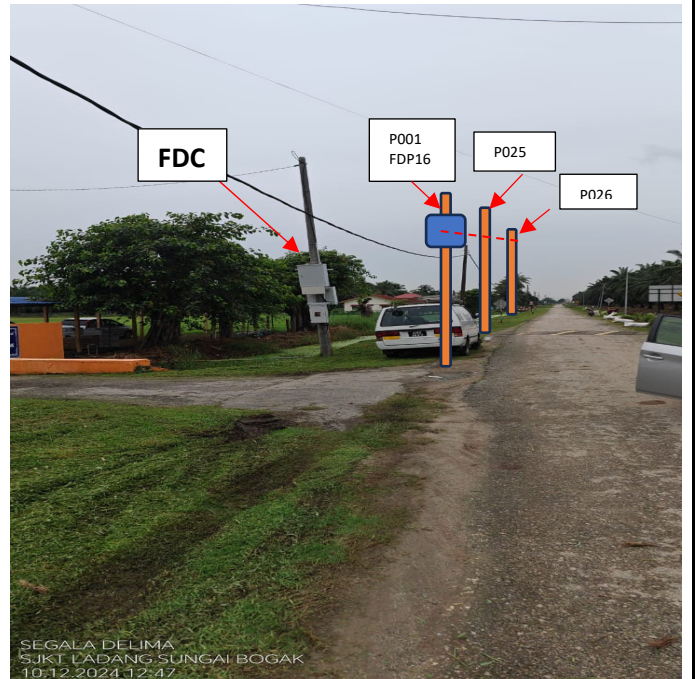
6.0 SITE PHOTOS - PROPOSED NEW POLE



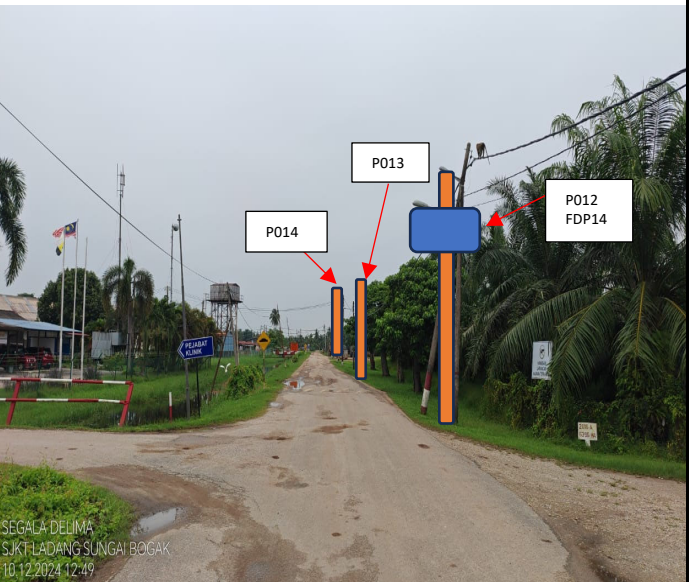
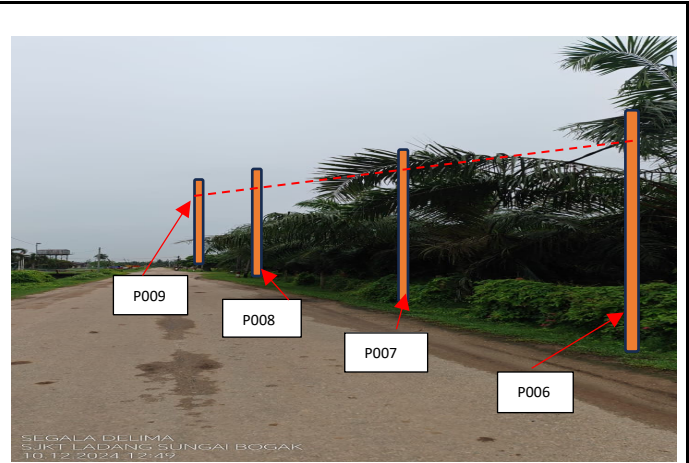
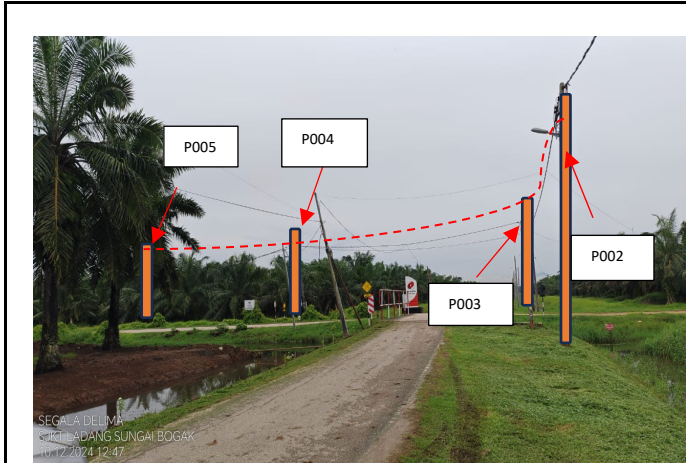
SEGALA DELIMA
SJKT LADANG SUNGAI BOGAK
10.12.2024 12:44



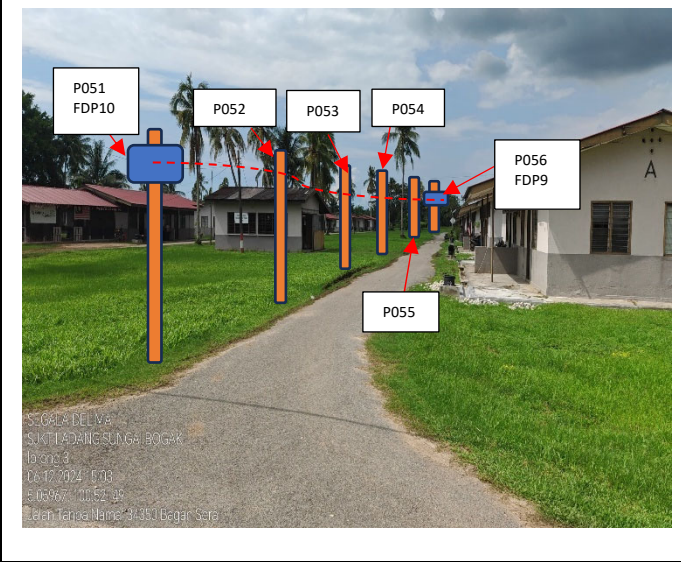
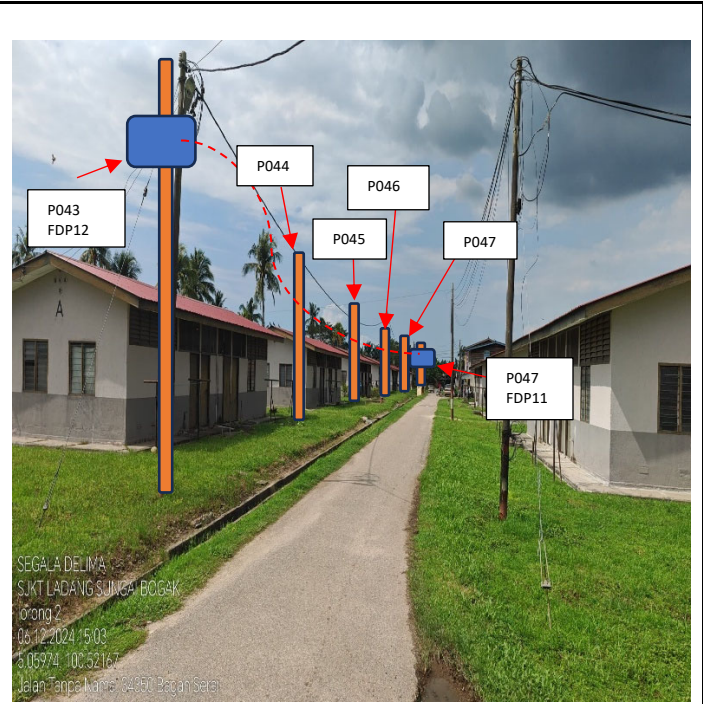
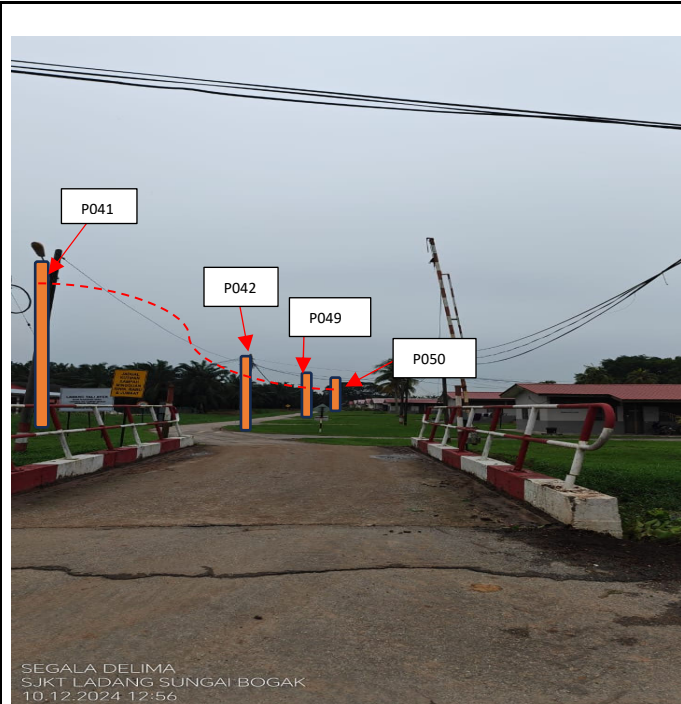
SEGALA DELIMA
SJKT LADANG SUNGAI BOGAK
10.12.2024 12:45

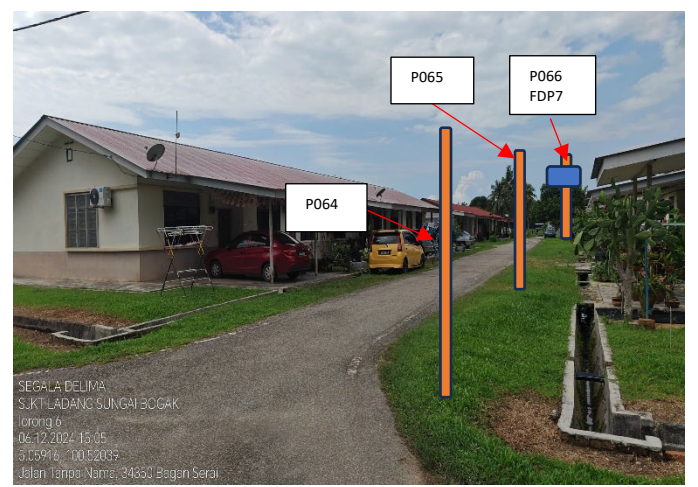
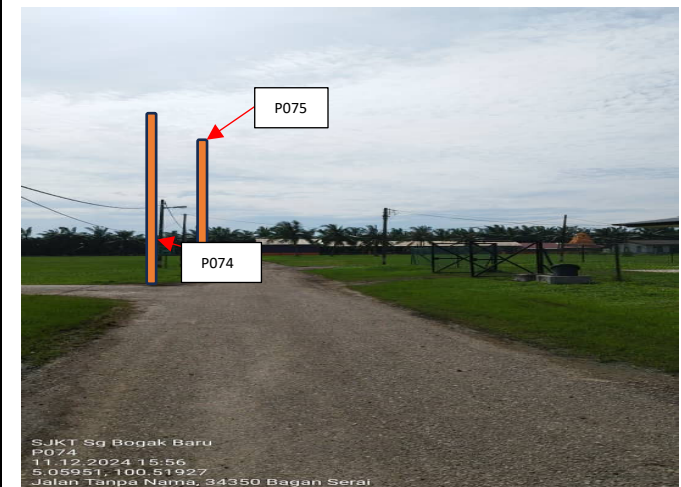
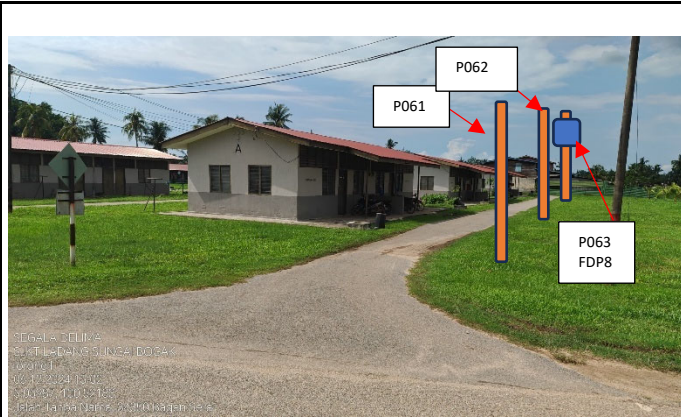


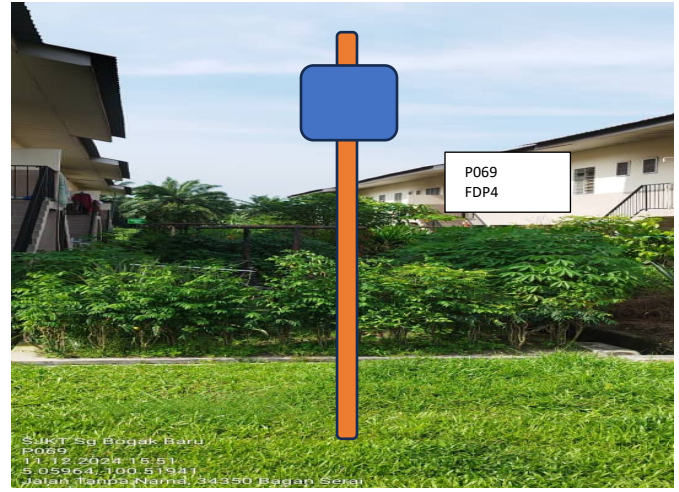
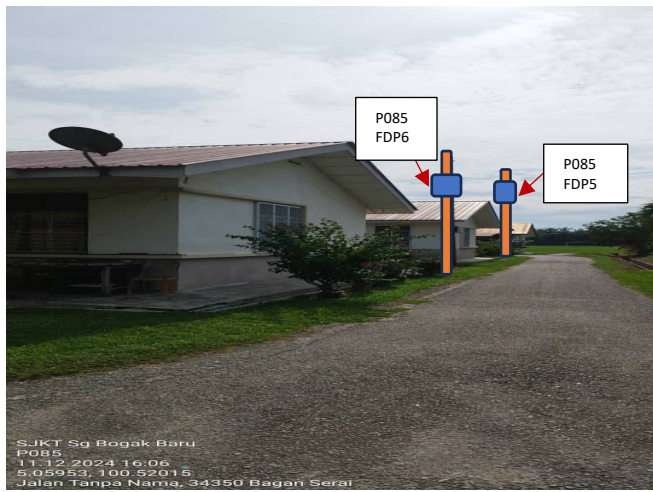
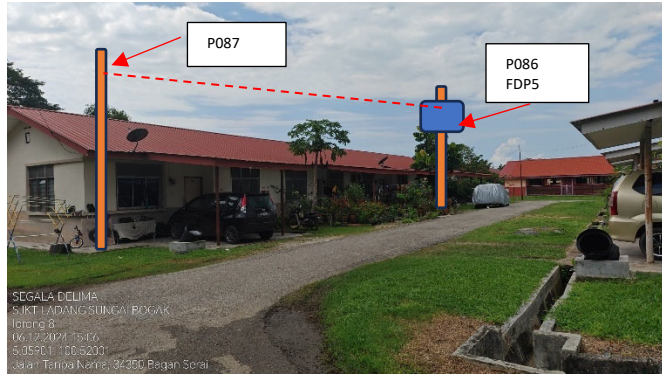
SEGALA DELIMA
SJKT LADANG SUNGAI BOGAK
10.12.2024 12:47

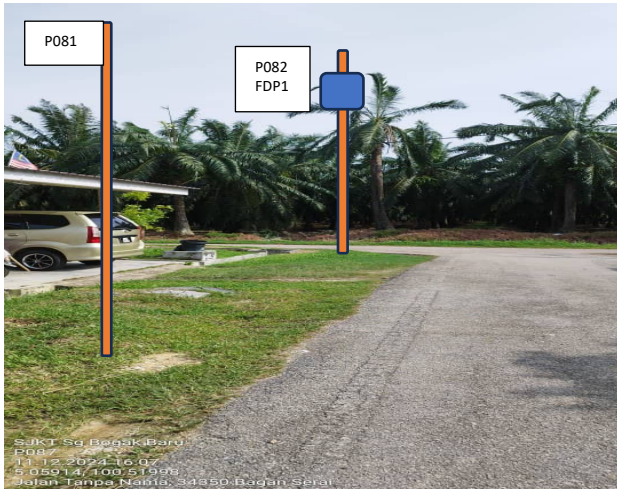
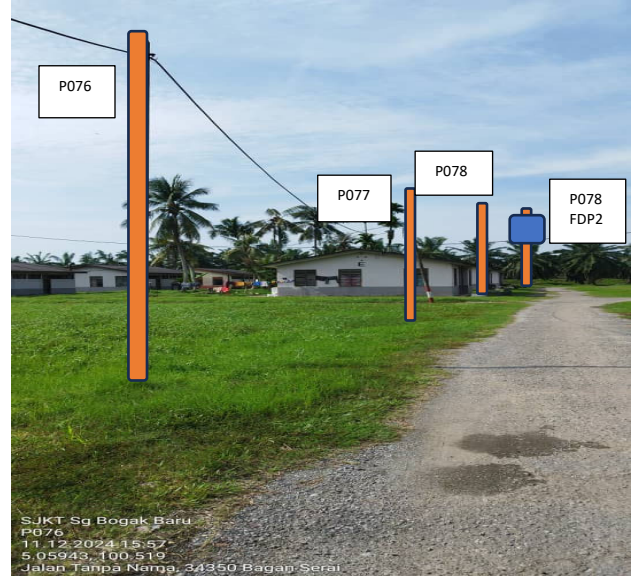
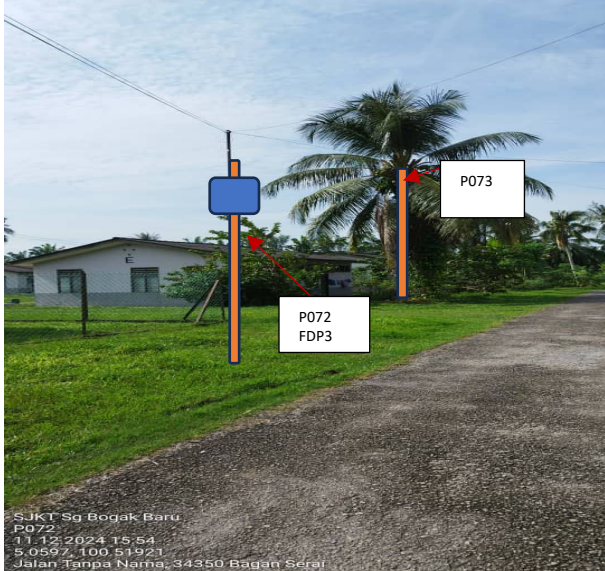












NO	LOCAL COUNCIL / AUTHORITY	REMARK
1	Majlis Daerah Kerian	-
2	JKR Daerah Kerian	-
3	Estate/PrivateLand	2473m

PAPER A1
 SAIZ TEXT HEIGHT = 10
 SKALA 1 : 5000



12C FOC	Installed 1:4 / 1:8 / 1:32 splitter	Installed Pole (9m)	Suspension	New Manhole (PIT)	Micro-Trenching (Meter)	MH1	MH NO.
24C FOC	Installed Patch Cord	Installed Pole (7.5M)	Tension	New Manhole(JRC7)	Temporary Infra (Meter)	TKS-1	Existing TNB Pole NO.
48C FOC	FDC	Installed Pole (6.7M)	Pole Ring	FDP Boundary	Loop / Coil (Meter)	P001	New Pole NO.
96C FOC	Closure	Existing TNB Pole	FDP with (1:8) splitter	HDD (Meter)	Active Outdoor Cabinet	CL01	Closure NO.
144C FOC	Existing Closure	Installed Riser	Existing Manhole	Open Cut (Meter)	FDC NO.	DP1	FDP NO.

ACTUAL HOMEPASS :


KEY PLAN:

PROJECT OWNER:




KEMENTERIAN KOMUNIKASI DAN DIGITAL

MAIN CONTRACTOR:



187475-V
PRIVASAT

SUB-CONTRACTOR:



SEGALA DELIMA (M) SDN. BHD.

PROJECT TITLE:

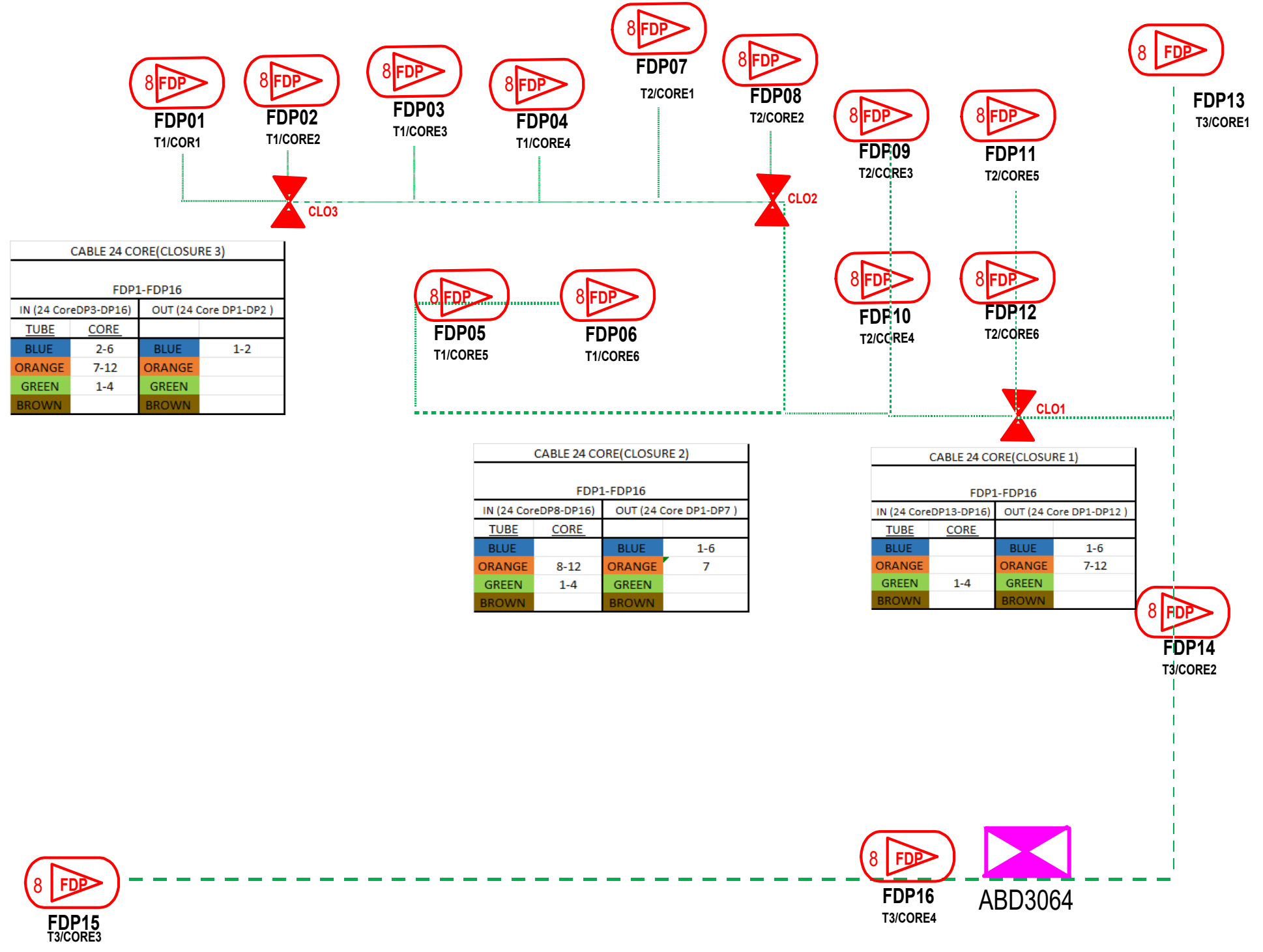
**CONTRACT FOR SURVEY
 TECHNICAL PROPOSAL AND
 WAYLEAVE
 & PERMITTING APPROVAL-POP 2
 PROJECT**

DRAWING TITLE:

**ABD3064
 SEKOLAH JENIS KEBANGSAAN
 (TAMIL) LADANG SUNGAI
 BOGAK**

PROJECT PHASE:

Design By : (Contractor)	Date :
Drawn By : (Contractor)	Scale : 1 : 5000
Checked By : ()	Job Number :
DRAWING NUMBER :	Sheet : /
	Size :



LEGEND

12C FOC	Installed 1:4 splitter in FDC	Installed Pole (9m)	C7	New Manhole(JRC7)	TS / TB	Tension Small / Tension Big	MH1	MH NO.
24C FOC	FDP with (1:8) splitter	Installed Riser	#	House Number	TKS-1	Existing Manhole	TKS-1	Existing TNB Pole NO.
48C FOC	Closure	Suspension Big	SB	Existing TNB Pole	C01	Closure NO.	P001	New Pole NO.
96C FOC	New Manhole (PIT)	Suspension Small	SS	LOOP	FDP1	FDP NO.		
144C FOC	Installed Pole (7.5M)	FDC		FDP Boundary	FDC	FDC NO.		

KEY PLAN :	PROJECT OWNER :	MAIN CONTRACTOR :	SUB-CONTRACTOR :	PROJECT TITLE:	DRAWING TITLE:	Design By : M.Helmi	Date : 11/11/2024
				POINT OF PRESENCE 2 (POP 2)	SLD SEKOLAH JENIS KEBANGSAAN (TAMIL) LADANG SUNGAI BOGAK	Drawn By : M.Helmi	Scale : N.T.S
					PROJECT PHASE: PROJECT PHASE	Checked By :	Job Number : ABA3009
						DRAWING NUMBER :	Sheet : SHEET
						DRAWING_NUMBER	Size : A3