



PROJEK PENYEDIAAN DAN PENYELENGGARAAN POINT OF PRESENCE (POP) FASA2: HAB INFRASTRUKTUR GENTIAN OPTIK BERHAMPIRAN DENGAN SEKOLAH, KAWASAN PERINDUSTRIAN, PREMIS KERAJAAN DAN KOMUNITI SEKITARNYA OLEH KEMENTERIAN KOMUNIKASI MALAYSIA – ZON UTARA (KKMM.400-11/17/132(1))



## TECHNICAL PROPOSAL

### POP2 ABD9007 SEKOLAH JENIS KEBANGSAAN (TAMIL) METHODIST

Company Name	:	WCWL COMMUNICATIONS SDN BHD
Company Address	:	127, Jalan PUJ 3/3, Taman Puncak Jalil 43300 Subang Jaya Selangor
Prepared By	:	Nur Syahidah Izzatie
Date	:	19/11/2024



POINT A

POINT B

#### Starting Point

Site / Boundary Name	:	SEKOLAH JENIS KEBANGSAAN (TAMIL) METHODIST
Address	:	Jalan Malim Nawar,
District	:	Kampar
Postcode	:	31700
State	:	Perak
GPS Coordinate	:	4.345835, 101.109643
LRD	:	A

#### End Point

Site / Boundary Name	:	SEKOLAH JENIS KEBANGSAAN (TAMIL) METHODIST
Address	:	Jalan Tengas,
District	:	Kampar
Postcode	:	31700
State	:	Perak
GPS Coordinate	:	4.351292, 101.113185
LRD	:	B



PROJEK PENYEDIAAN DAN PENYELENGGARAAN POINT OF PRESENCE (POP) FASA2: HAB INFRASTRUKTUR GENTIAN OPTIK BERHAMPIRAN DENGAN SEKOLAH, KAWASAN PERINDUSTRIAN, PREMIS KERAJAAN DAN KOMUNITI SEKITARNYA OLEH KEMENTERIAN KOMUNIKASI MALAYSIA - ZON UTARA (KKMM.400-11/17/132(1))



### Work Summary

No	Proposed Distance and Method	Unit	Qty
1	Horizontal Directional Drilling (HDD)	m	0
2	Carriage Way Open trench (CW)	m	0
3	Grass Verge Open Trenching (GV)	m	0
4	Micro trenching (MT)	m	0
	Total		0

	Other Information	Unit	Qty
1	Proposed Manhole	EA	0
2	Proposed Pole	EA	90
3	Joint Closure	EA	4
4	Estimated time required for completion	days	30



PROJEK PENYEDIAAN DAN PENYELENGGARAAN POINT OF PRESENCE (POP) FASA2: HAB INFRASTRUKTUR GENTIAN OPTIK BERHAMPIRAN DENGAN SEKOLAH, KAWASAN PERINDUSTRIAN, PREMIS KERAJAAN DAN KOMUNITI SEKITARNYA OLEH KEMENTERIAN KOMUNIKASI MALAYSIA – ZON UTARA (KKMM.400-11/17/132(1))



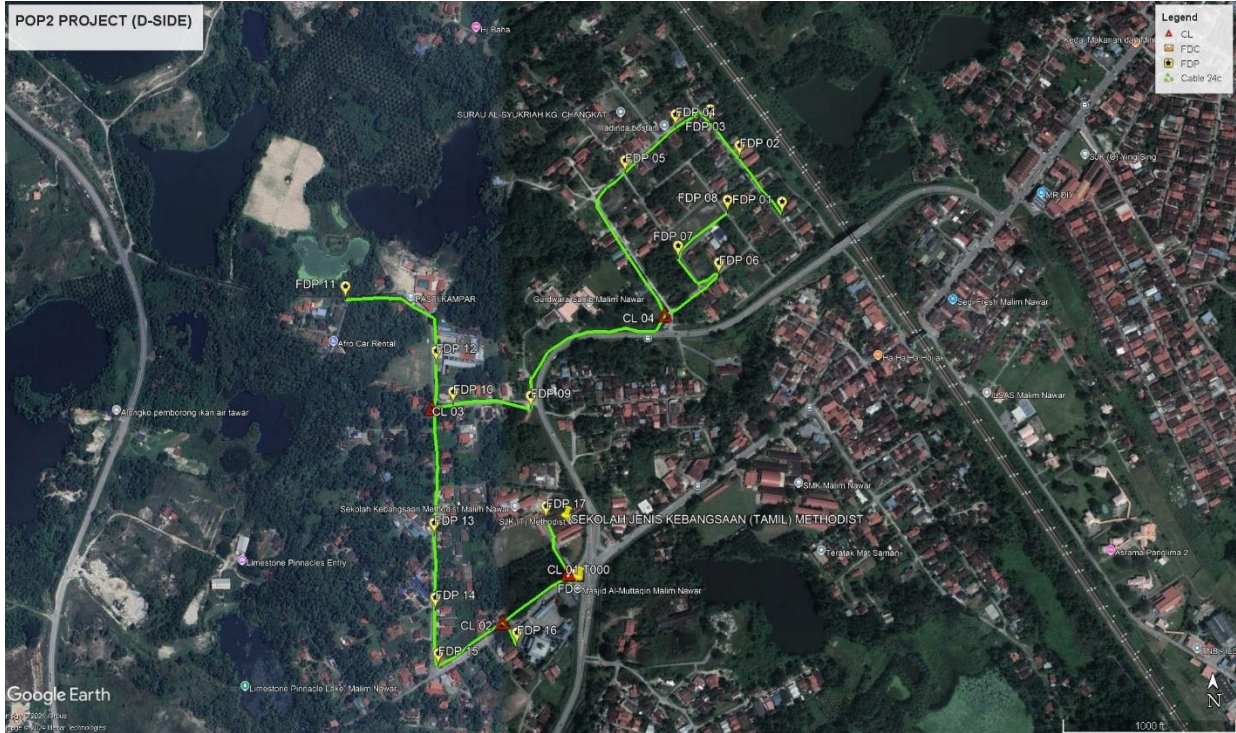
### Local Authority Summary

#### 1. Daerah Kampar

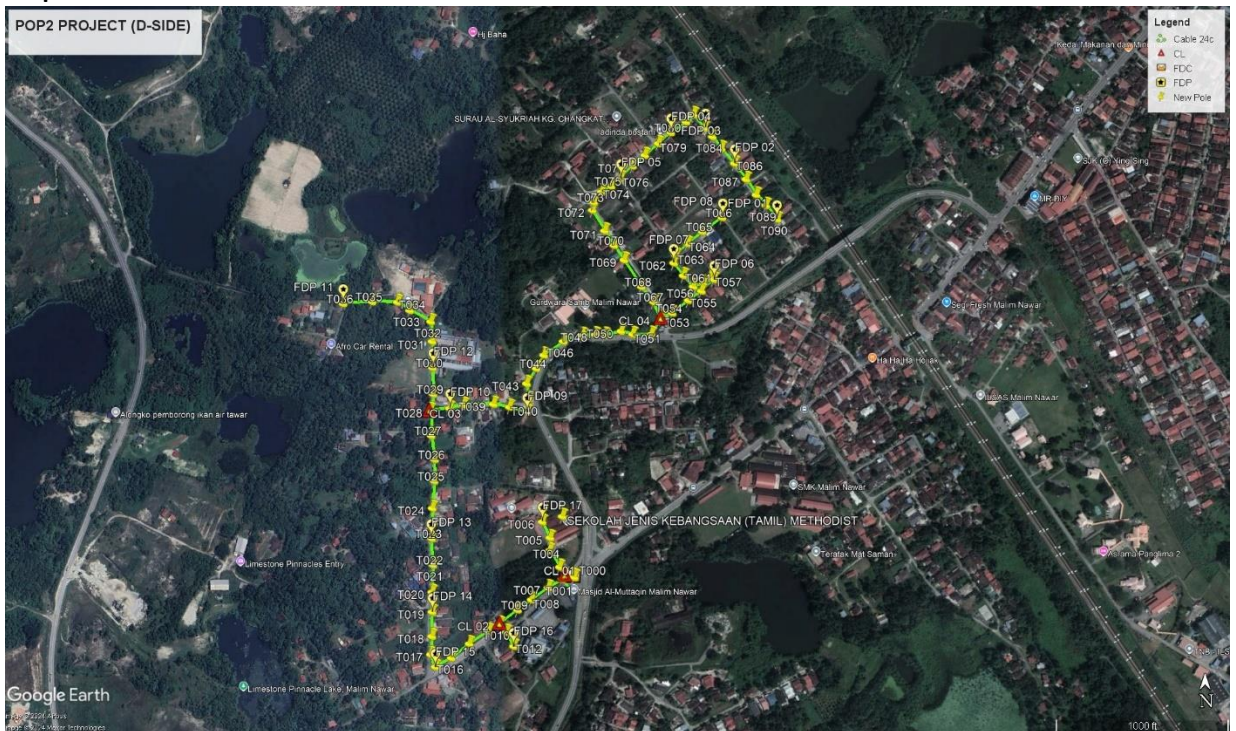
Bil	Items	Owner	Quantity	Distance(m)
1	HDD	JKR	-	-
		Majlis	-	-
		Estate / Private Land	-	-
2	New Pole	JKR	12pcs	340m
		Majlis	78pcs	2452m
		Estate / Private Land	-	-
3	Existing TNB Pole	JKR	-	-
		Majlis	-	-
		Estate / Private Land	-	-
Total				2972m

Site Plan – KMZ (Overview site area)

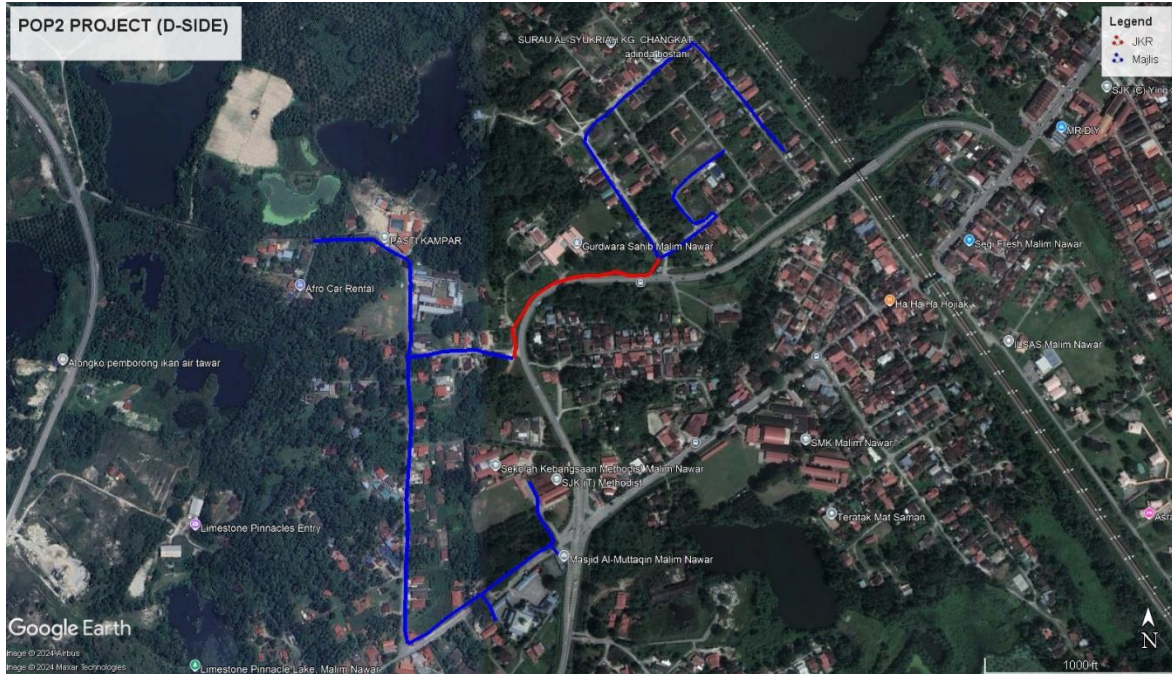
Proposed FDP and Closure



Proposed New Pole



**Site Plan – KMZ Routing (All Local Authority)**

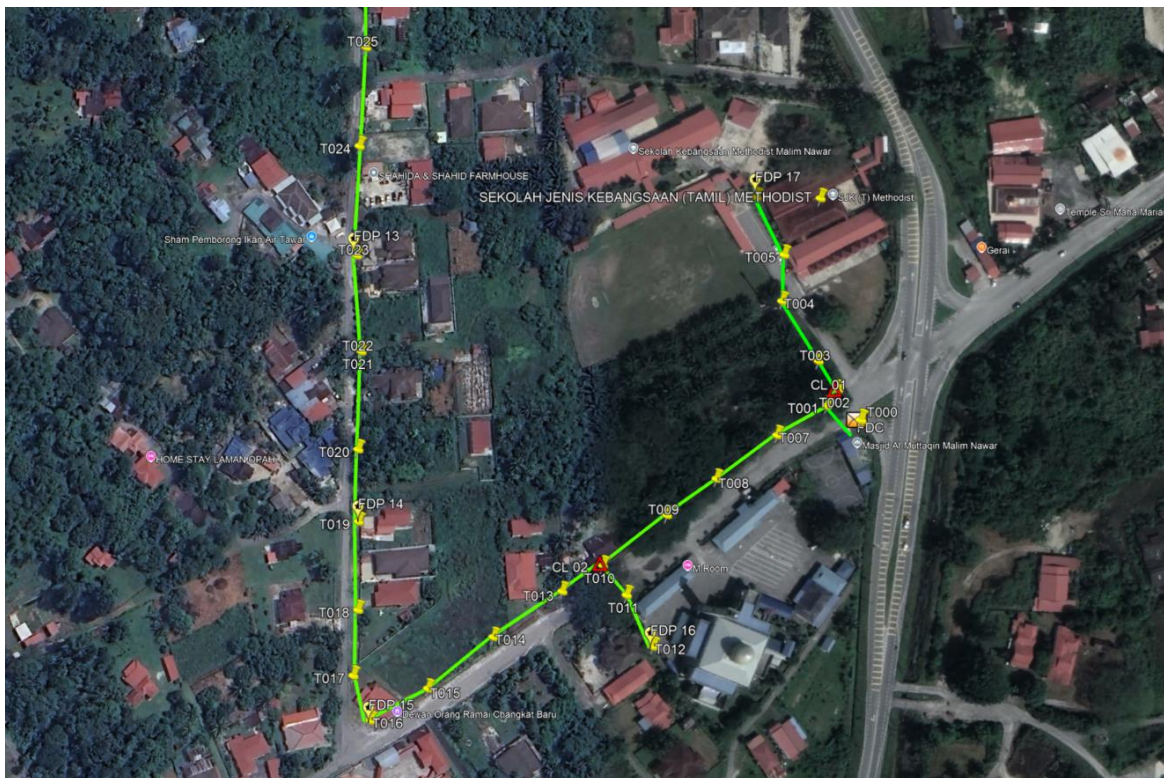
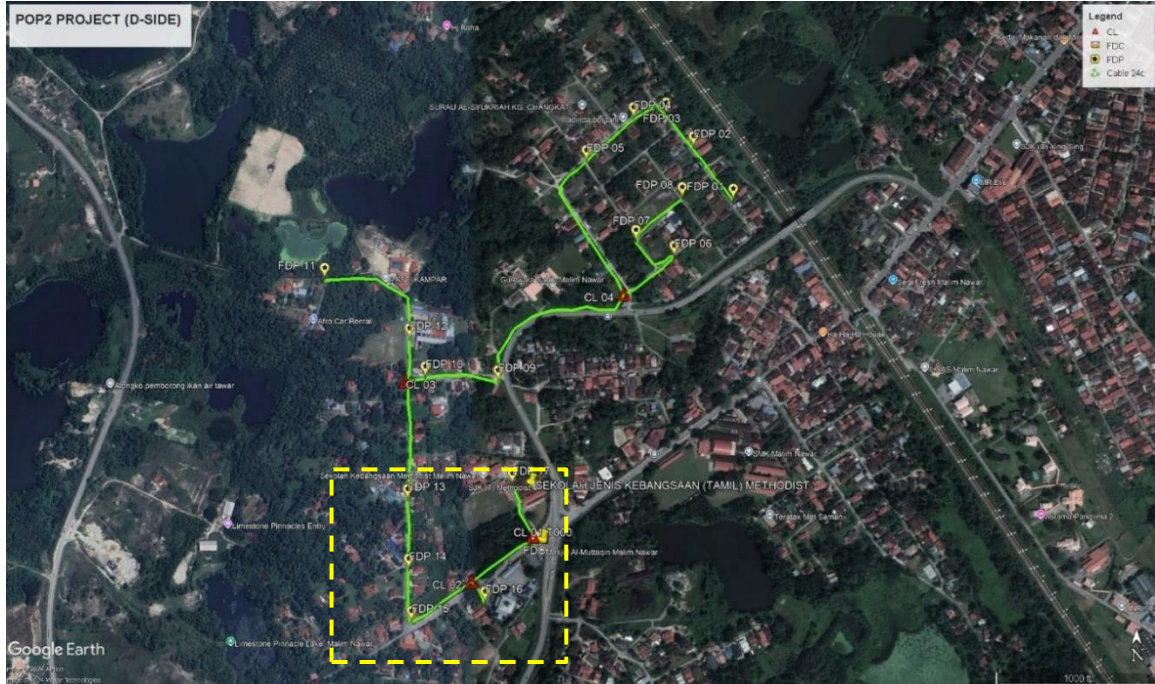


**Red - JKR Kampar**

**Blue - Majlis Perbandaran Kampar**

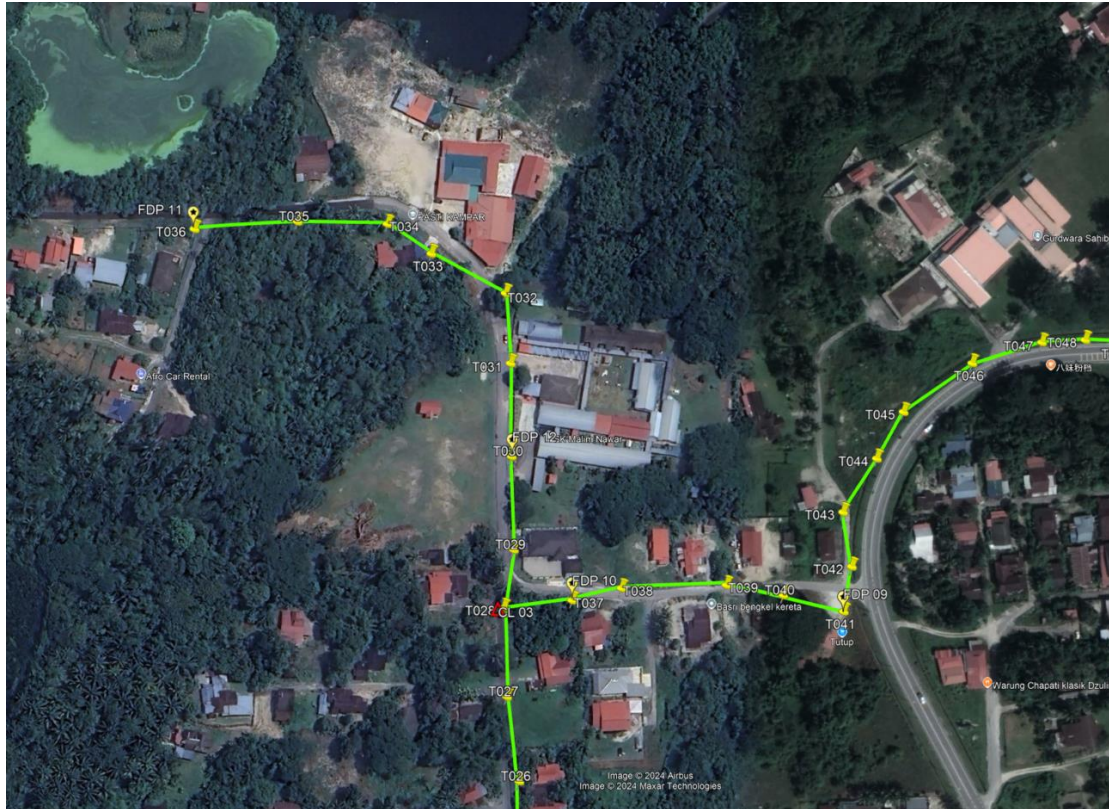
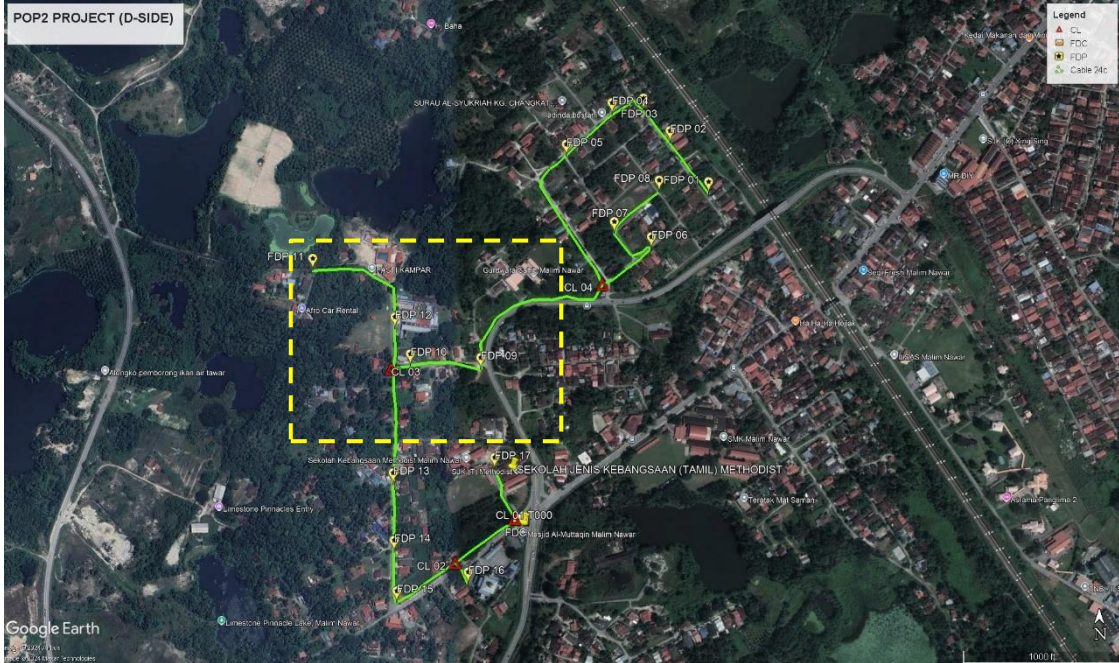
Site Plan – KMZ Routing (All site area)

Route 1



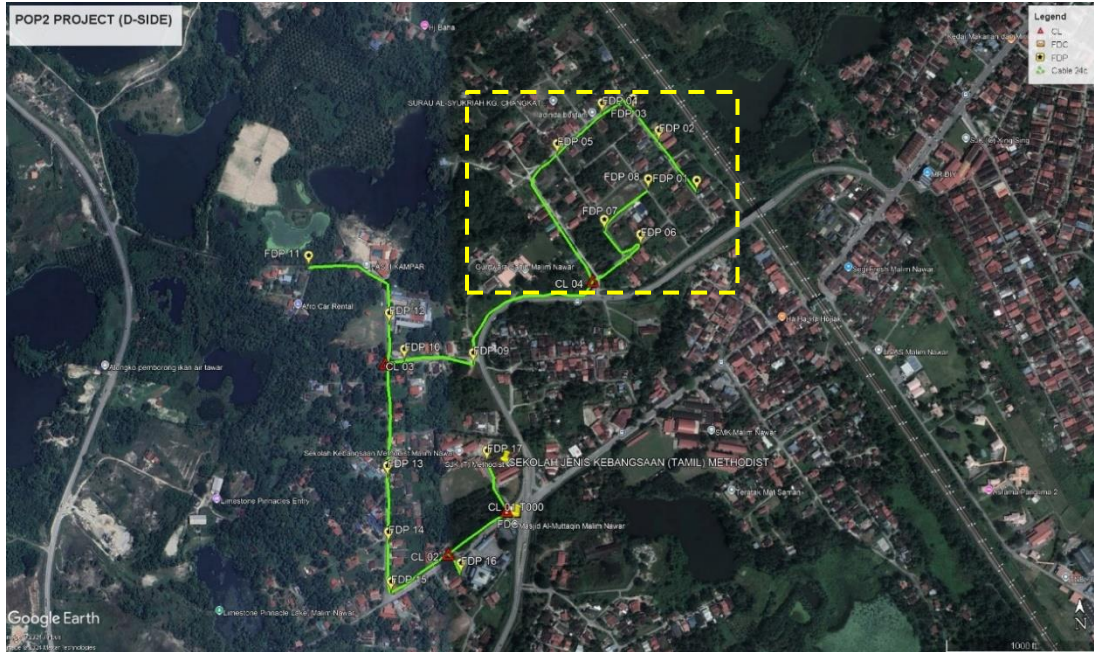
Route 1.1

**Route 2**



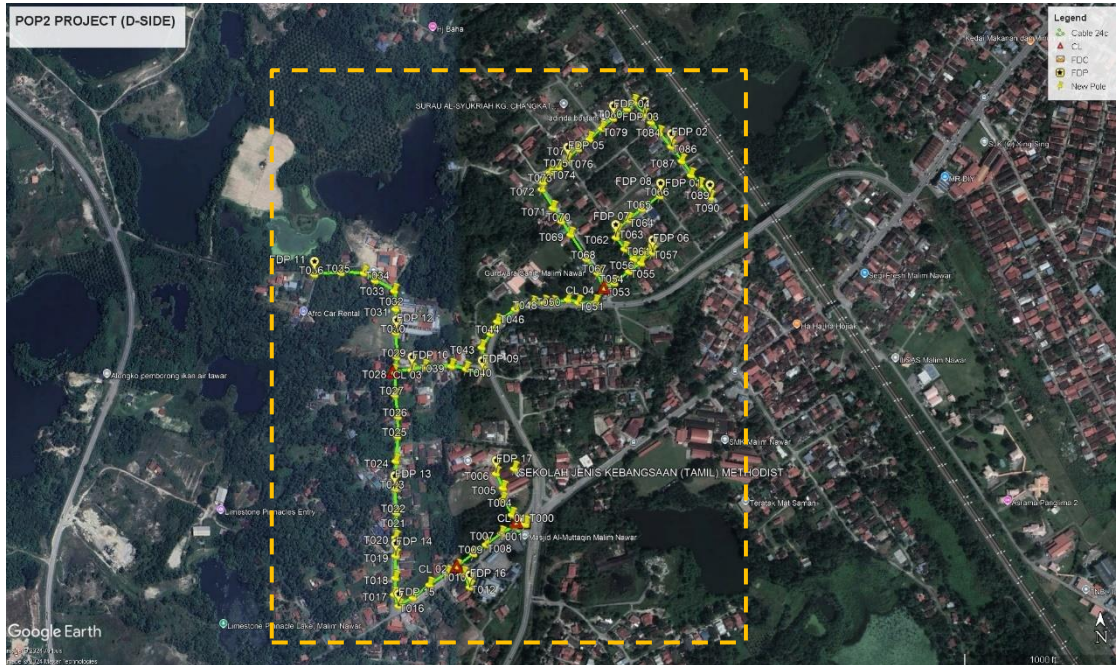
**Route 2.2**

Route 3



Route 3.3

Site Plan – KMZ Routing (Proposed new Pole)





PROJEK PENYEDIAAN DAN PENYELENGGARAAN POINT OF PRESENCE (POP) FASA2: HAB INFRASTRUKTUR GENTIAN OPTIK BERHAMPIRAN DENGAN SEKOLAH, KAWASAN PERINDUSTRIAN, PREMIS KERAJAAN DAN KOMUNITI SEKITARNYA OLEH KEMENTERIAN KOMUNIKASI MALAYSIA – ZON UTARA  
(KKMM.400-11/17/132(1))



**Overall Pole (Proposed New)**

No.	Pole ID	Distance	Latitude	Longitude	Local Authority
1	FDC	0.00	4.345819	101.109675	Majlis Perbandaran Kampar
2	T001	19.10	4.345928743	101.1095431	Majlis Perbandaran Kampar
3	T002	9.43	4.345998351	101.1095913	Majlis Perbandaran Kampar
4	T003	17.06	4.346124954	101.109505	Majlis Perbandaran Kampar
5	T004	34.30	4.346387833	101.1093443	Majlis Perbandaran Kampar
6	T005	22.74	4.346591891	101.1093535	Majlis Perbandaran Kampar
7	T006	31.09	4.34684299	101.1092312	Majlis Perbandaran Kampar
8	T007	116.71	4.345798648	101.1093231	Majlis Perbandaran Kampar
9	T008	36.64	4.345607046	101.1090555	Majlis Perbandaran Kampar
10	T009	30.18	4.345447384	101.1088364	Majlis Perbandaran Kampar
11	T010	39.89	4.345227385	101.1085535	Majlis Perbandaran Kampar
12	T011	18.55	4.345097816	101.1086583	Majlis Perbandaran Kampar
13	T012	28.54	4.344869511	101.1087749	Majlis Perbandaran Kampar
14	T013	52.18	4.34511316	101.1083745	Majlis Perbandaran Kampar
15	T014	40.56	4.344911866	101.1080708	Majlis Perbandaran Kampar
16	T015	40.85	4.344685181	101.1077822	Majlis Perbandaran Kampar
17	T016	32.11	4.34454596	101.1075296	Majlis Perbandaran Kampar
18	T017	23.56	4.34474415	101.1074553	Majlis Perbandaran Kampar
19	T018	32.23	4.345032899	101.1074769	Majlis Perbandaran Kampar
20	T019	43.16	4.345420573	101.1074812	Majlis Perbandaran Kampar
21	T020	35.18	4.345736605	101.1074807	Majlis Perbandaran Kampar
22	T021	47.82	4.34616596	101.1074932	Majlis Perbandaran Kampar
23	T022	0.00	4.34616597	101.1074932	Majlis Perbandaran Kampar
24	T023	46.69	4.346584957	101.1074748	Majlis Perbandaran Kampar
25	T024	53.24	4.347063046	101.1074861	Majlis Perbandaran Kampar
26	T025	48.01	4.347493271	101.1075163	Majlis Perbandaran Kampar
27	T026	38.04	4.347834878	101.107524	Majlis Perbandaran Kampar
28	T027	42.41	4.348211721	101.1074682	Majlis Perbandaran Kampar
29	T028	44.34	4.348609757	101.1074546	Majlis Perbandaran Kampar
30	T029	29.17	4.348868018	101.107499	Majlis Perbandaran Kampar
31	T030	46.49	4.349285482	101.1074889	Majlis Perbandaran Kampar
32	T031	46.28	4.349701236	101.1074851	Majlis Perbandaran Kampar
33	T032	34.86	4.350013614	101.1074632	Majlis Perbandaran Kampar
34	T033	41.92	4.350189996	101.1071305	Majlis Perbandaran Kampar
35	T034	26.39	4.350322253	101.1069338	Majlis Perbandaran Kampar
36	T035	43.85	4.350327982	101.1065399	Majlis Perbandaran Kampar
37	T036	51.78	4.350297127	101.1060758	Majlis Perbandaran Kampar
38	T037	262.95	4.348641593	101.1077607	Majlis Perbandaran Kampar
39	T038	25.35	4.348694925	101.1079821	Majlis Perbandaran Kampar

40	T039	52.60	4.348709161	101.1084544	Majlis Perbandaran Kampar
41	T040	28.88	4.348662538	101.1087096	Majlis Perbandaran Kampar
42	T041	31.69	4.348587809	101.1089843	JKR Kampar
43	T042	22.88	4.348790209	101.1090203	JKR Kampar
44	T043	27.49	4.349034059	101.1089815	JKR Kampar
45	T044	31.69	4.349274698	101.1091336	JKR Kampar
46	T045	26.90	4.349483992	101.1092544	JKR Kampar
47	T046	42.21	4.349702631	101.1095642	JKR Kampar
48	T047	36.28	4.349795631	101.1098766	JKR Kampar
49	T048	21.75	4.349806582	101.1100717	JKR Kampar
50	T049	17.28	4.349800514	101.1102268	JKR Kampar
51	T050	29.24	4.349862532	101.110482	JKR Kampar
52	T051	21.17	4.349814175	101.1106659	JKR Kampar
53	T052	33.02	4.3498143	101.1109625	JKR Kampar
54	T053	33.16	4.3500658	101.1111221	Majlis Perbandaran Kampar
55	T054	21.45	4.350150745	101.1112951	Majlis Perbandaran Kampar
56	T055	36.42	4.350352047	101.111553	Majlis Perbandaran Kampar
57	T056	28.46	4.35050037	101.1117612	Majlis Perbandaran Kampar
58	T057	29.75	4.350683075	101.1119563	Majlis Perbandaran Kampar
59	T058	8.73	4.35073936	101.1119017	Majlis Perbandaran Kampar
60	T059	17.64	4.350625534	101.1117914	Majlis Perbandaran Kampar
61	T060	18.92	4.350571102	101.1116304	Majlis Perbandaran Kampar
62	T061	26.01	4.350743652	101.1114728	Majlis Perbandaran Kampar
63	T062	27.93	4.350943042	101.1113205	Majlis Perbandaran Kampar
64	T063	13.71	4.351061462	101.1113543	Majlis Perbandaran Kampar
65	T064	29.16	4.351250947	101.1115351	Majlis Perbandaran Kampar
66	T065	33.87	4.35143982	101.1117736	Majlis Perbandaran Kampar
67	T066	43.06	4.351664526	101.1120885	Majlis Perbandaran Kampar
68	T067	192.11	4.350328279	101.1109964	Majlis Perbandaran Kampar
69	T068	34.19	4.350567785	101.1108042	Majlis Perbandaran Kampar
70	T069	56.04	4.350990781	101.1105313	Majlis Perbandaran Kampar
71	T070	31.48	4.351221496	101.1103678	Majlis Perbandaran Kampar
72	T071	30.17	4.351450391	101.1102226	Majlis Perbandaran Kampar
73	T072	42.21	4.351775502	101.1100274	Majlis Perbandaran Kampar
74	T073	14.02	4.351899595	101.1100488	Majlis Perbandaran Kampar
75	T074	22.97	4.352064588	101.1101727	Majlis Perbandaran Kampar
76	T075	19.68	4.352156332	101.1103238	Majlis Perbandaran Kampar
77	T076	21.94	4.352281277	101.1104762	Majlis Perbandaran Kampar
78	T077	30.23	4.352476791	101.1106647	Majlis Perbandaran Kampar
79	T078	28.74	4.352643693	101.1108617	Majlis Perbandaran Kampar
80	T079	31.73	4.352832511	101.1110752	Majlis Perbandaran Kampar
81	T080	29.35	4.353008132	101.1112718	Majlis Perbandaran Kampar

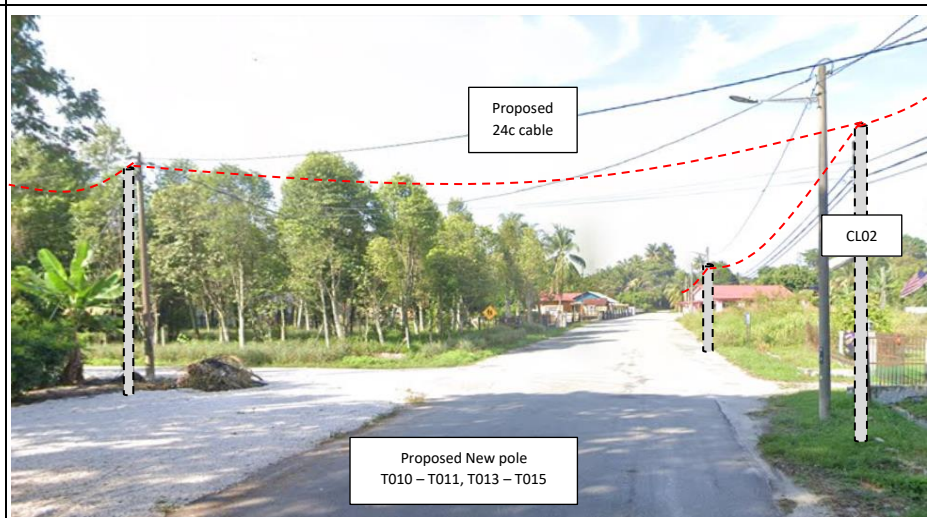
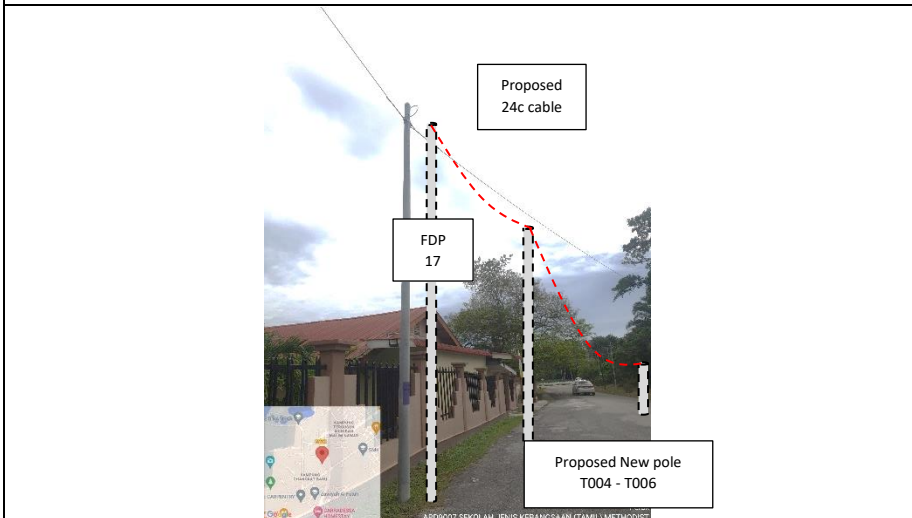
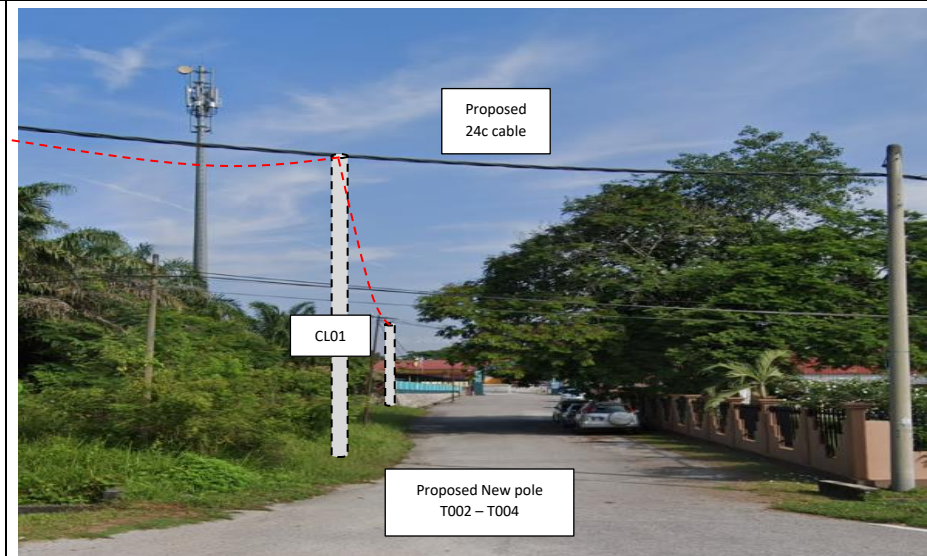
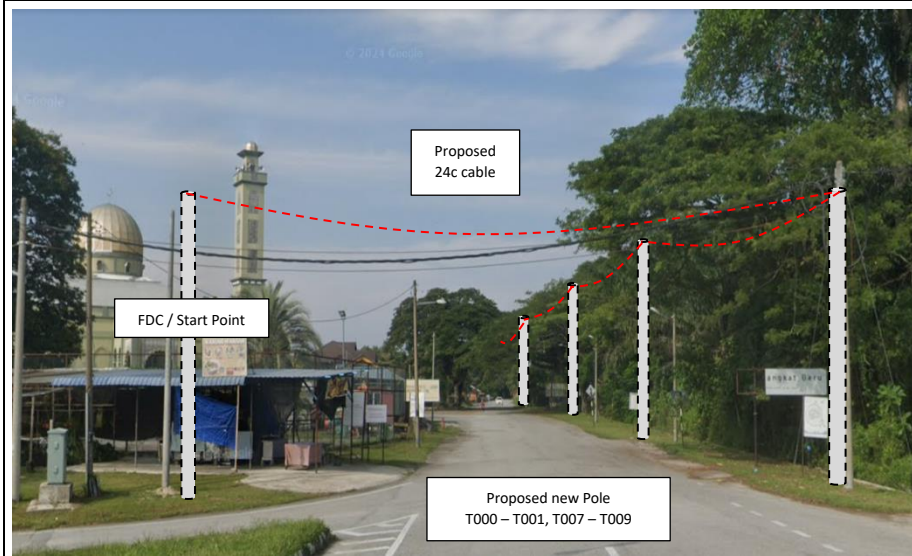


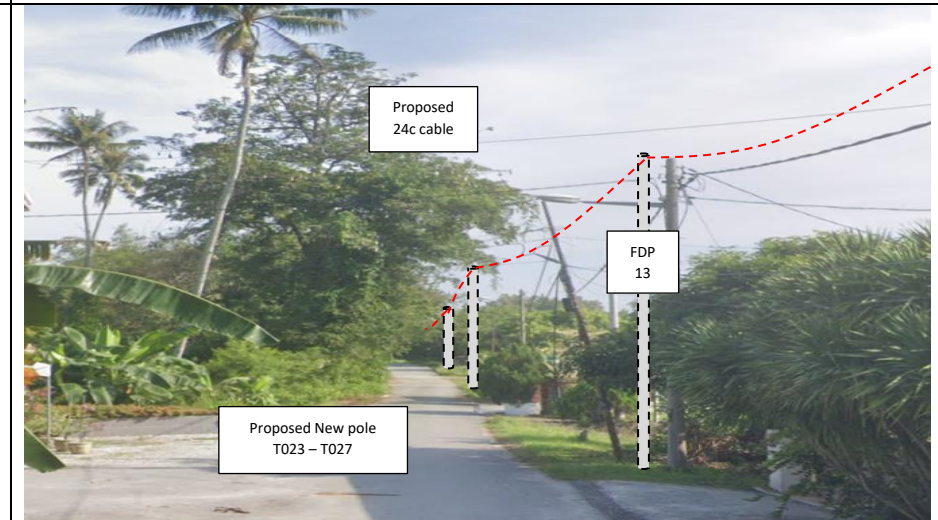
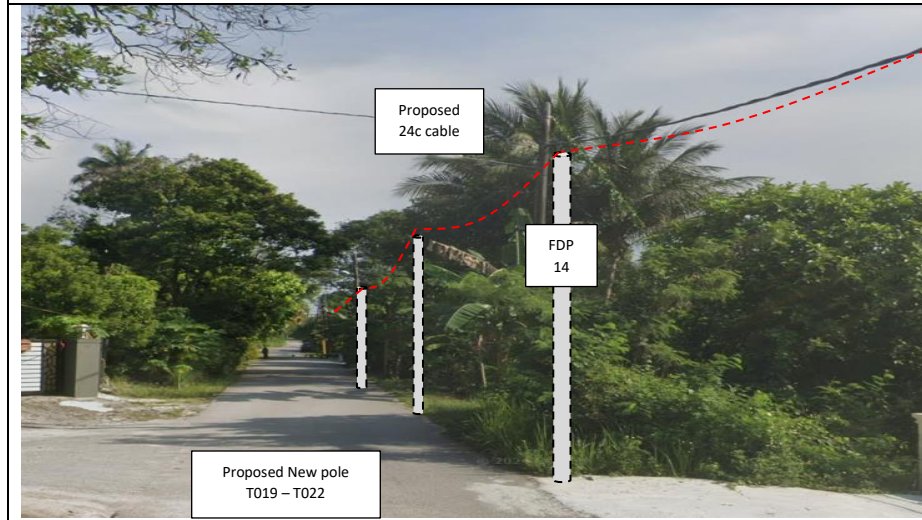
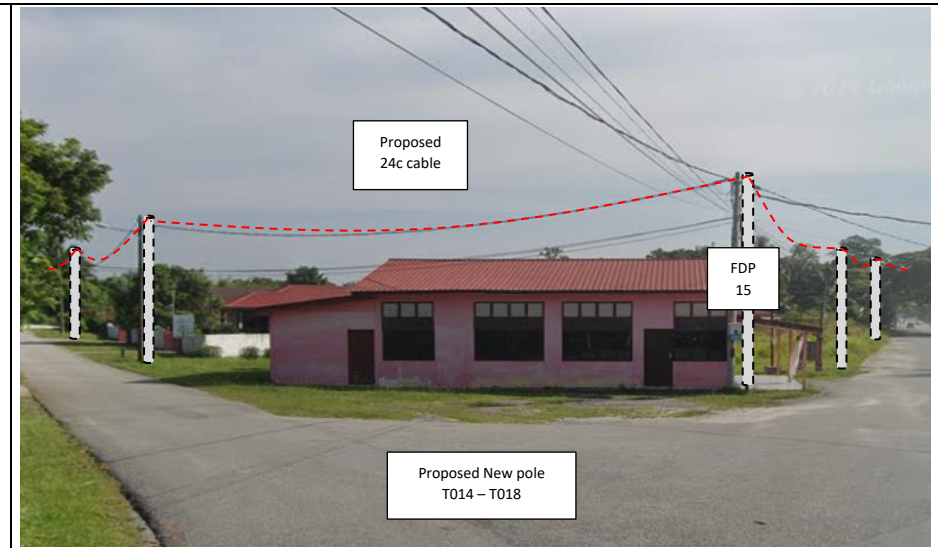
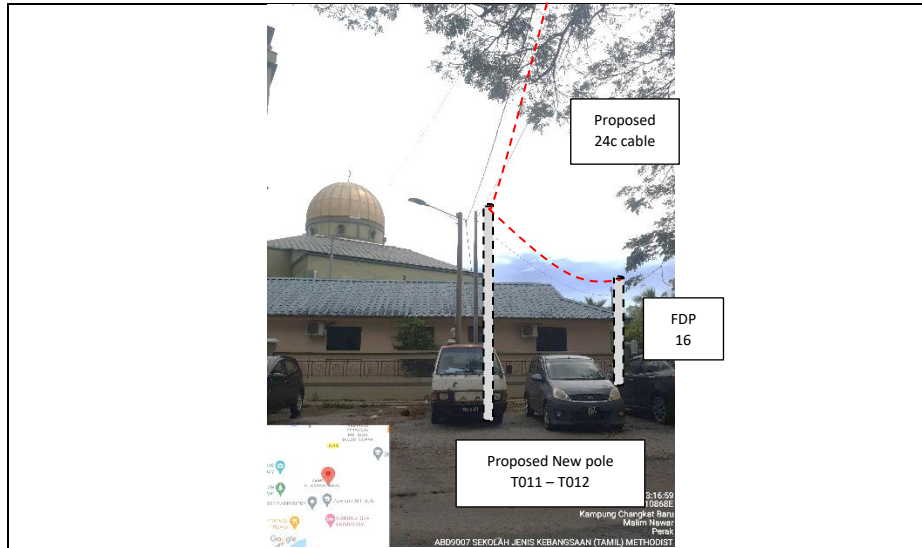
PROJEK PENYEDIAAN DAN PENYELENGGARAAN POINT OF PRESENCE (POP) FASA2: HAB INFRASTRUKTUR GENTIAN OPTIK BERHAMPIRAN DENGAN SEKOLAH, KAWASAN PERINDUSTRIAN, PREMIS KERAJAAN DAN KOMUNITI SEKITARNYA OLEH KEMENTERIAN KOMUNIKASI MALAYSIA - ZON UTARA (KKMM.400-11/17/132(1))

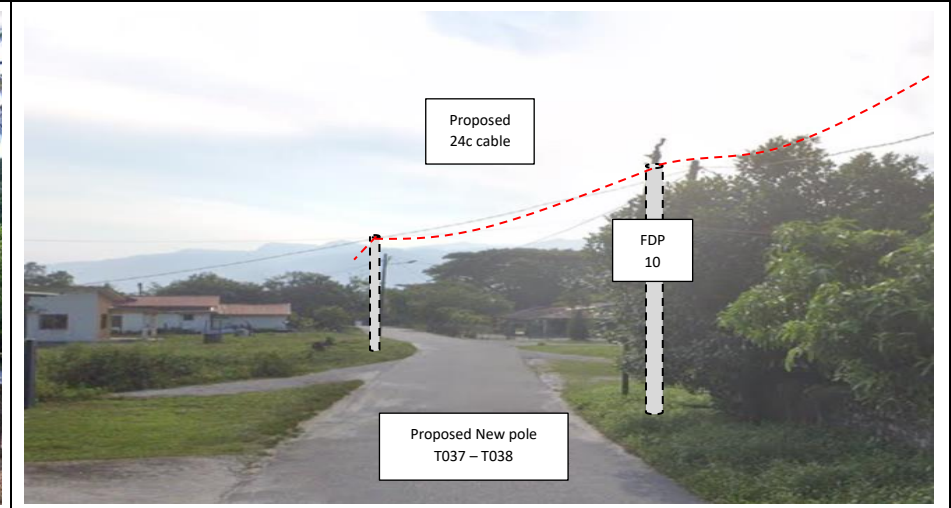
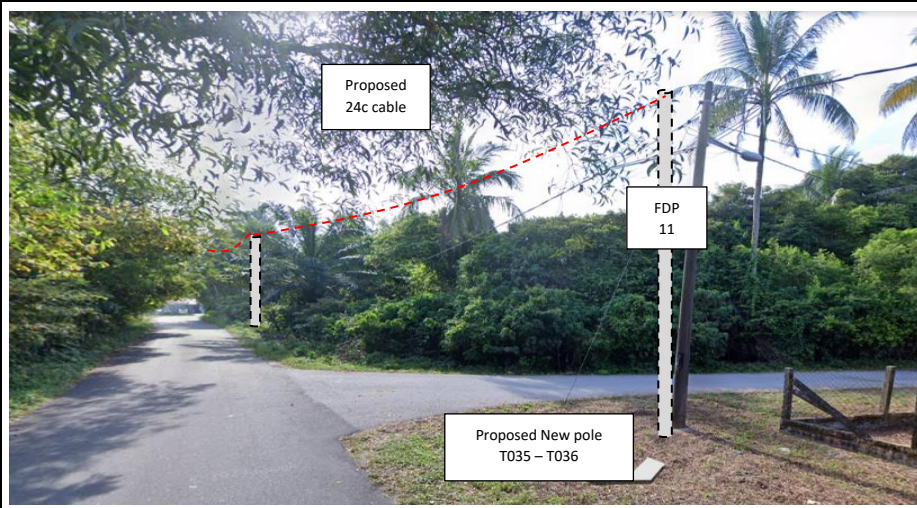
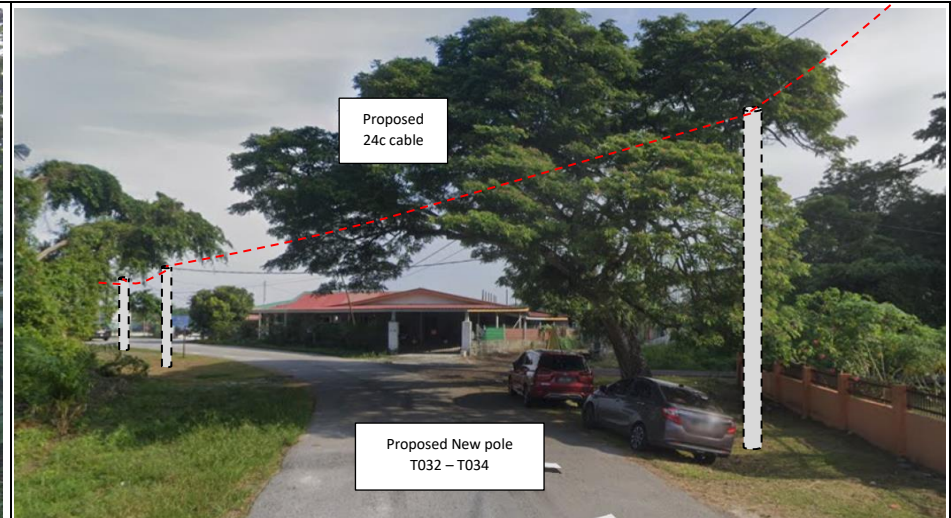
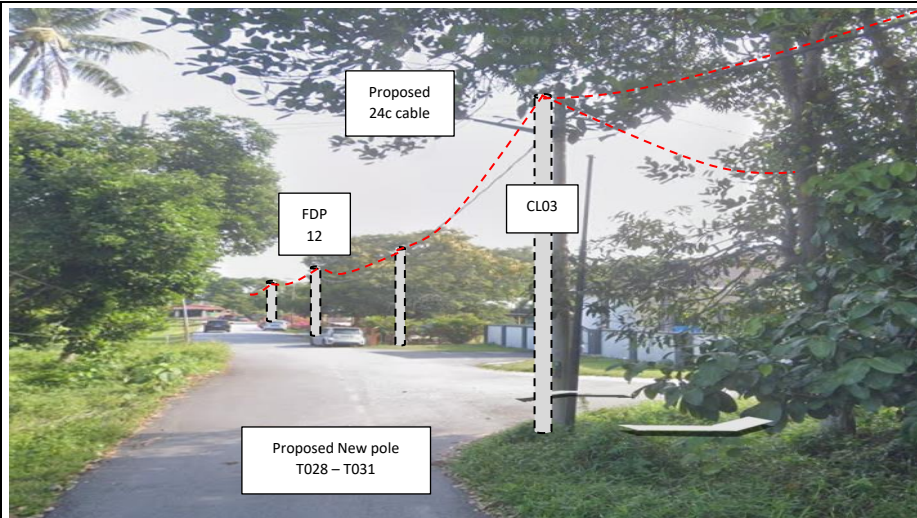


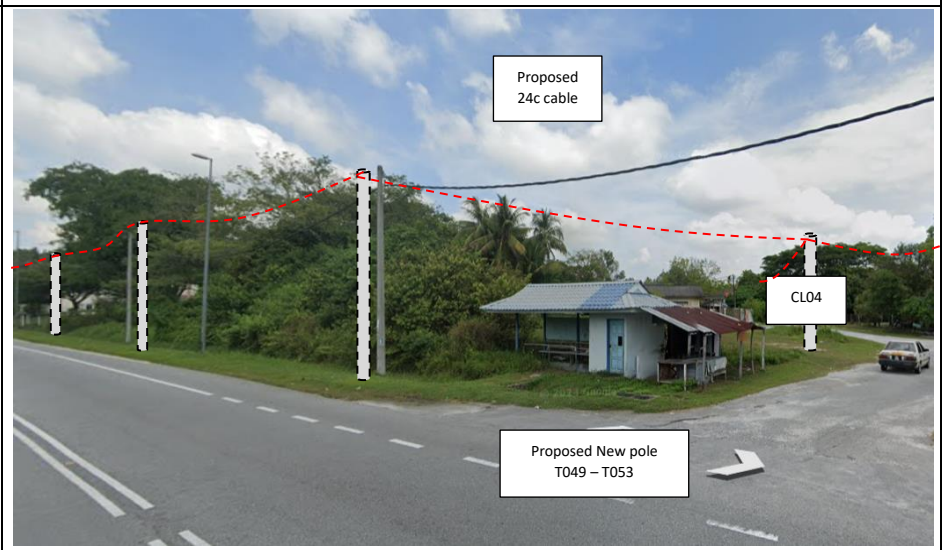
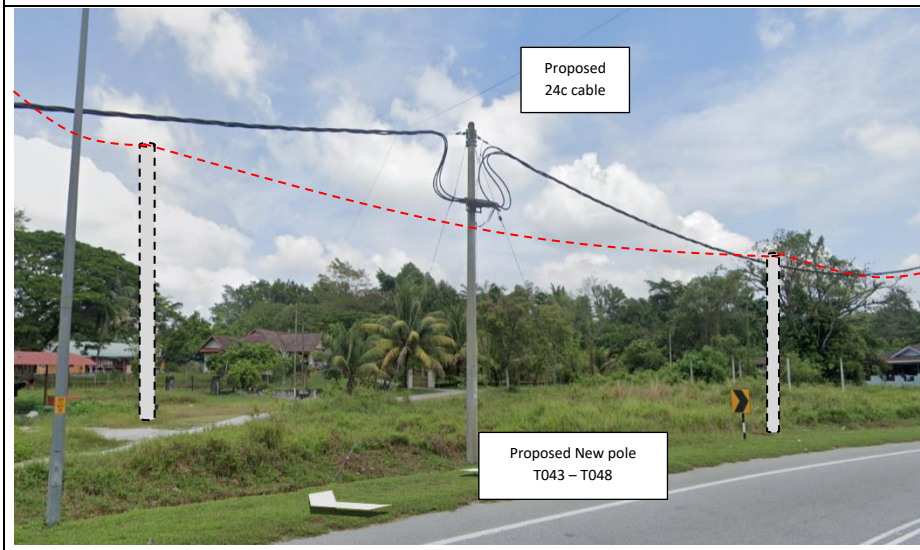
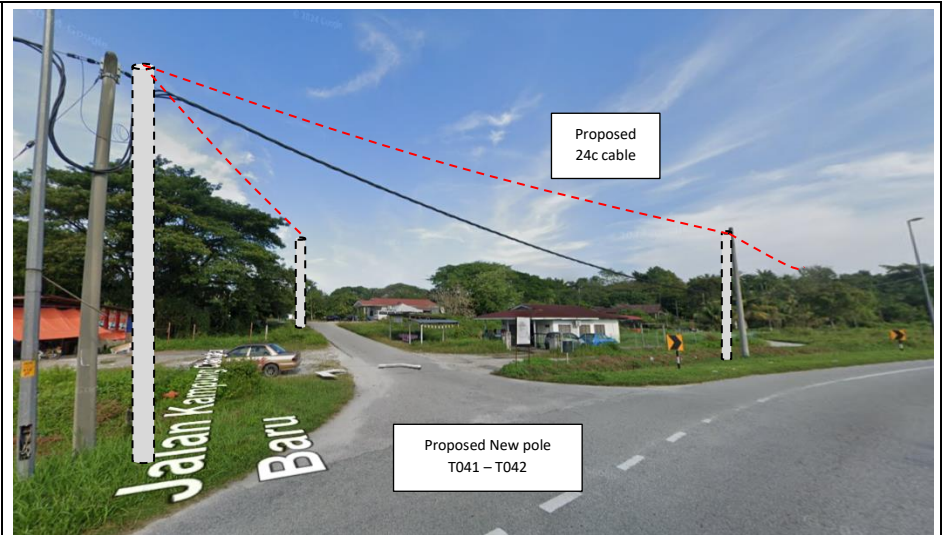
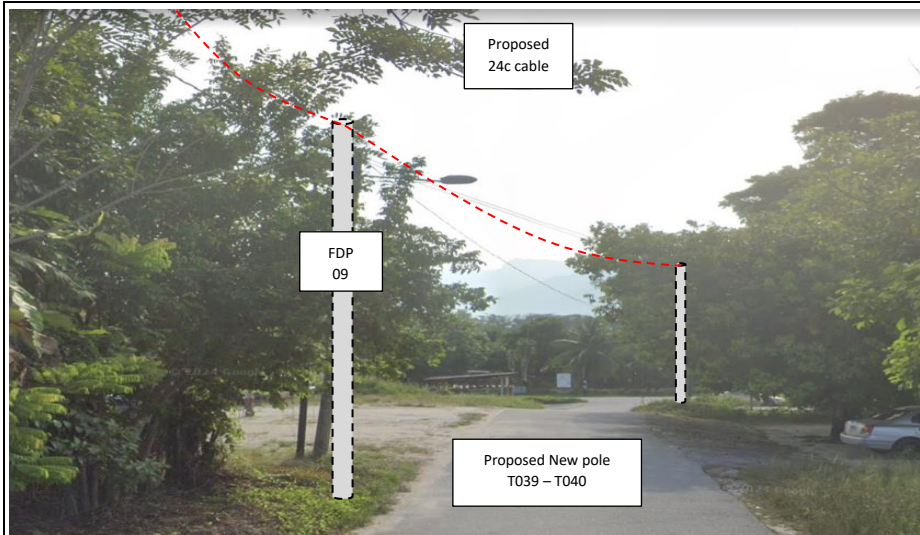
82	T081	32.97	4.353177103	101.111515	Majlis Perbandaran Kampar
83	T082	18.42	4.353292016	101.111634	Majlis Perbandaran Kampar
84	T083	30.70	4.353077175	101.1118069	Majlis Perbandaran Kampar
85	T084	20.56	4.352943619	101.1119345	Majlis Perbandaran Kampar
86	T085	26.39	4.352753967	101.1120767	Majlis Perbandaran Kampar
87	T086	34.93	4.352520459	101.1122863	Majlis Perbandaran Kampar
88	T087	34.58	4.352270636	101.1124709	Majlis Perbandaran Kampar
89	T088	32.87	4.352023253	101.1126321	Majlis Perbandaran Kampar
90	T089	25.39	4.351856862	101.1127881	Majlis Perbandaran Kampar
91	T090	31.66	4.351636876	101.1129684	Majlis Perbandaran Kampar

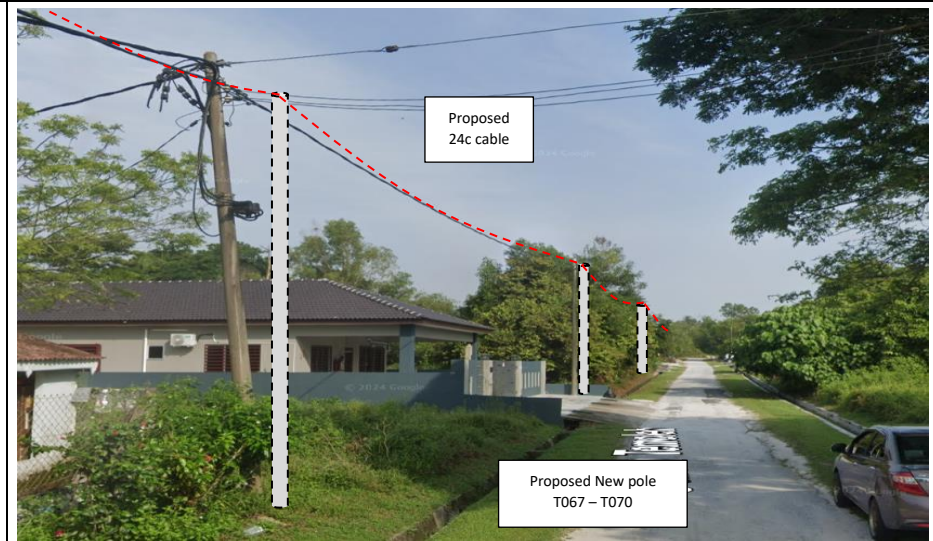
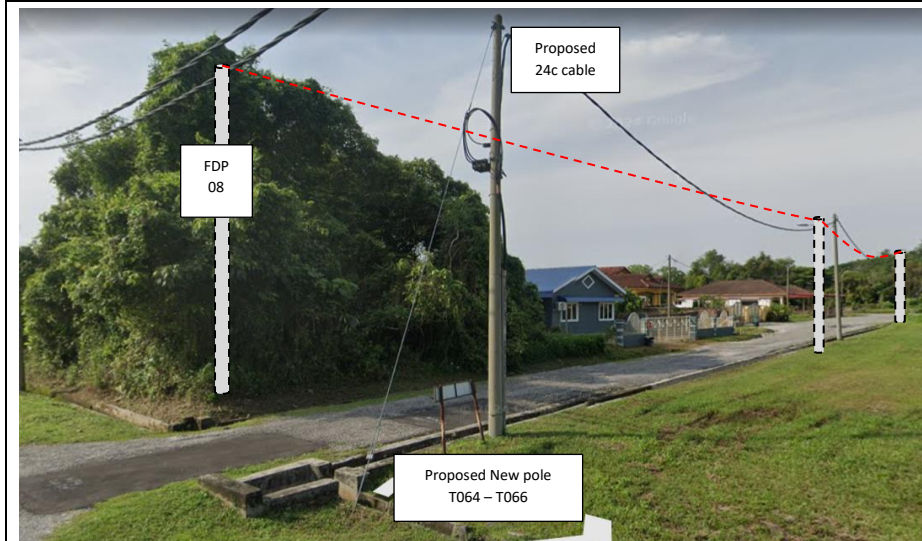
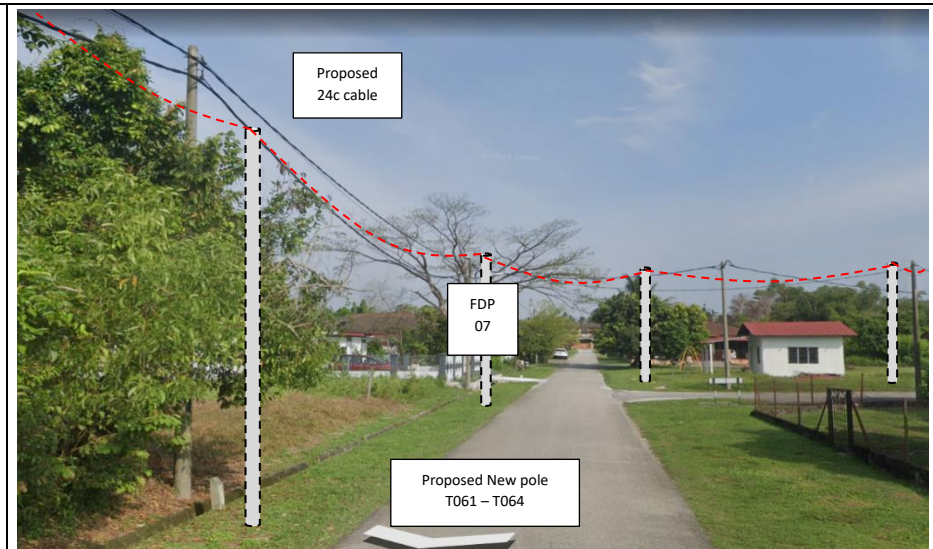
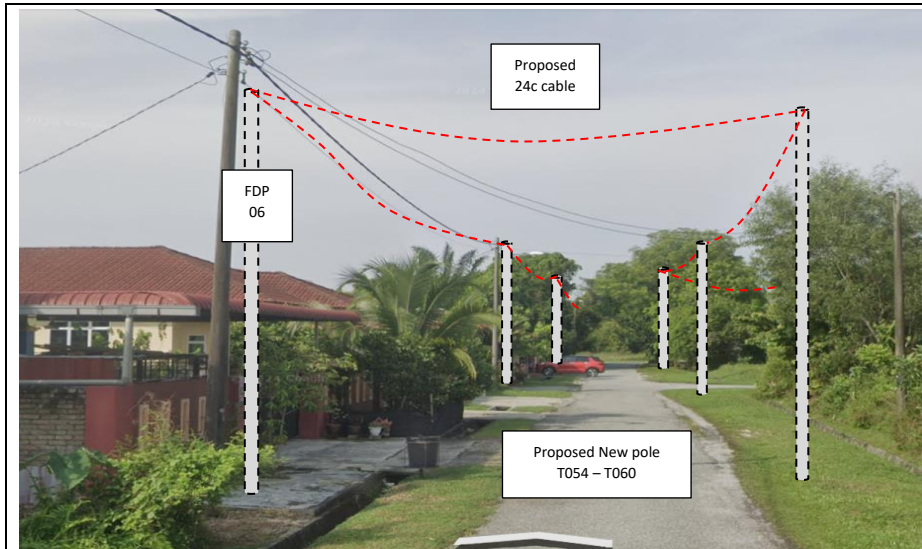
Site Photos – Proposed to install pole

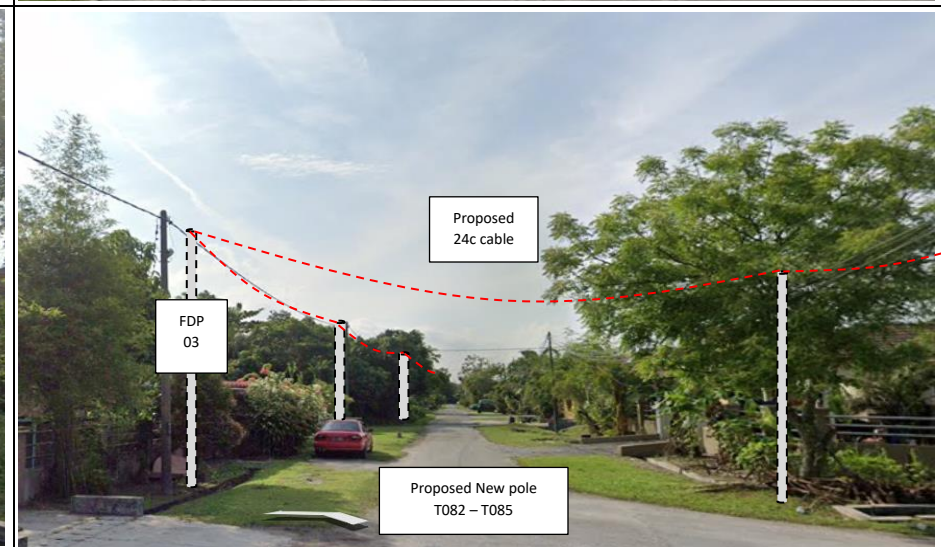
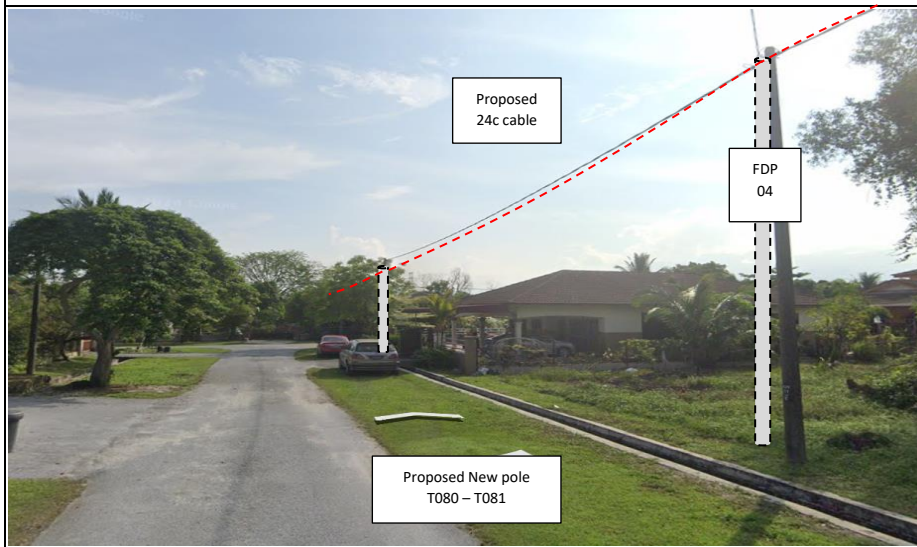
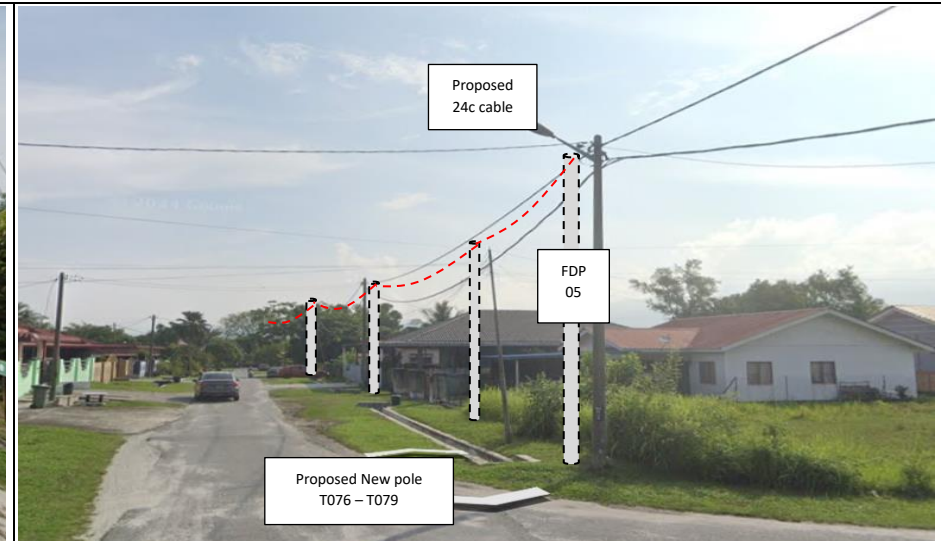
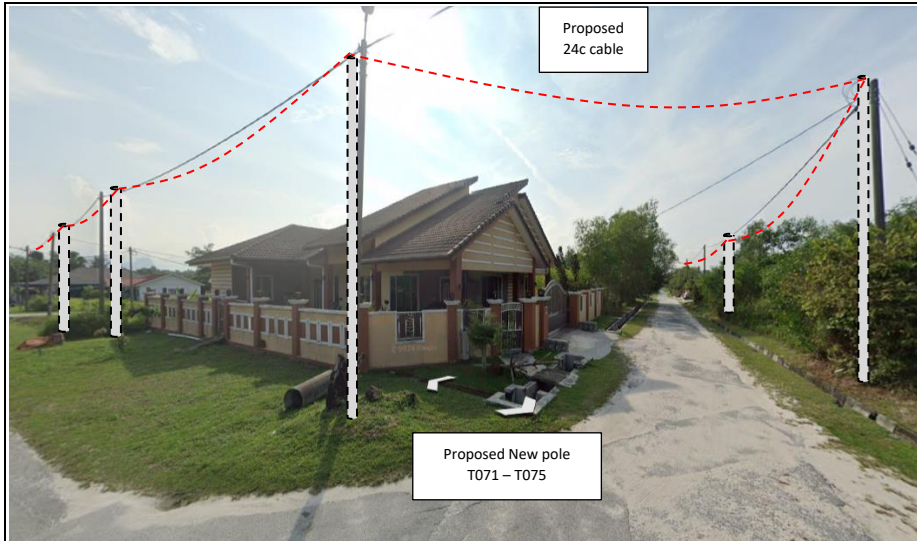


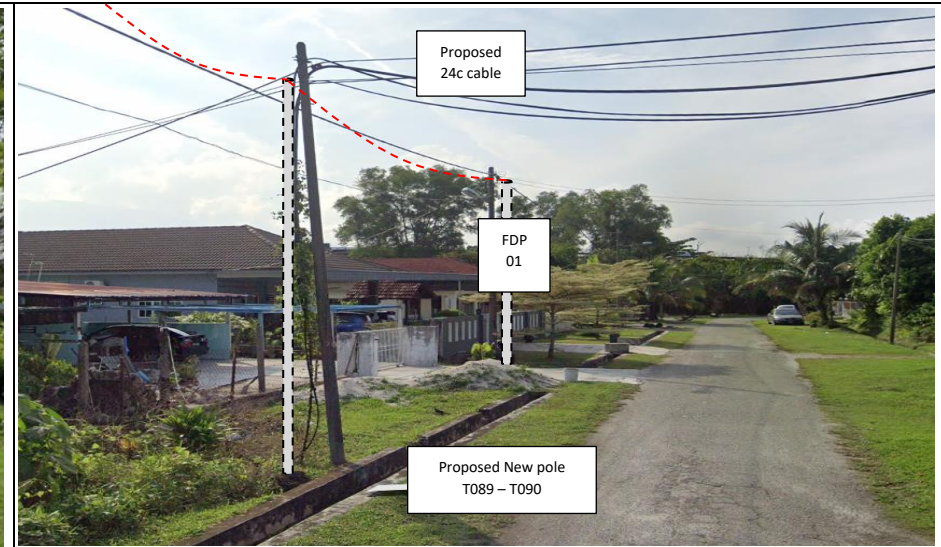
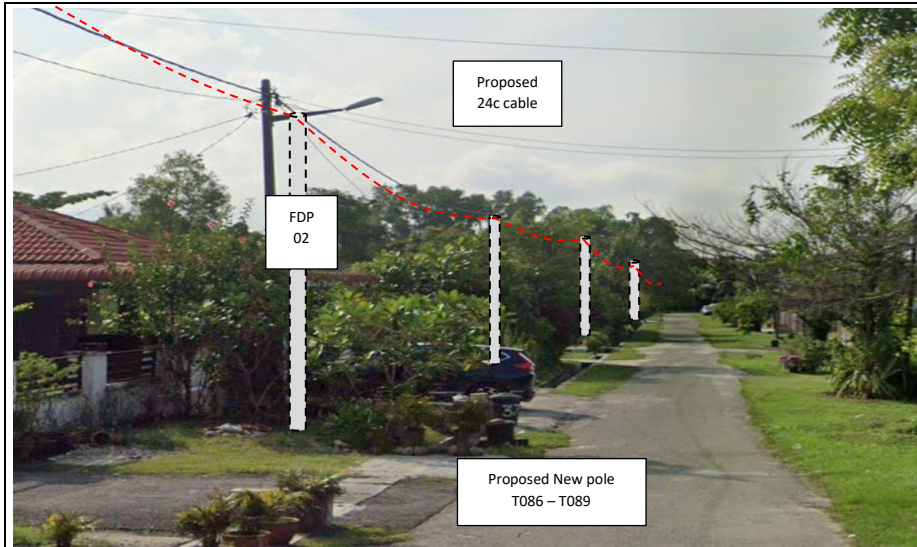












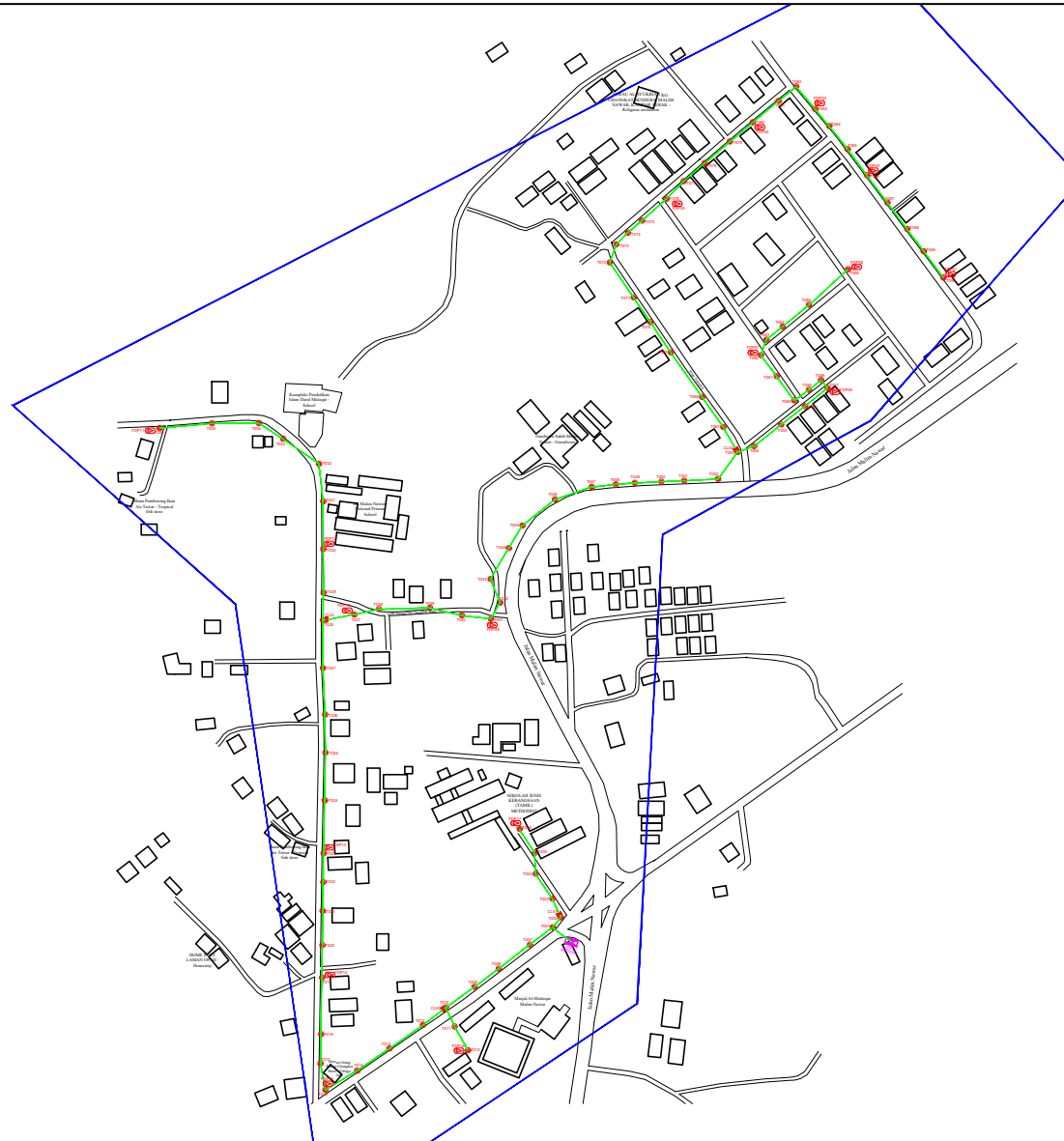


PROJEK PENYEDIAAN DAN PENYELENGGARAAN POINT OF PRESENCE (POP) FASA2: HAB INFRASTRUKTUR GENTIAN OPTIK BERHAMPIRAN DENGAN SEKOLAH, KAWASAN PERINDUSTRIAN, PREMIS KERAJAAN DAN KOMUNITI SEKITARNYA OLEH KEMENTERIAN KOMUNIKASI MALAYSIA – ZON UTARA (KKMM.400-11/17/132(1))




### 3rd Parties Dependencies

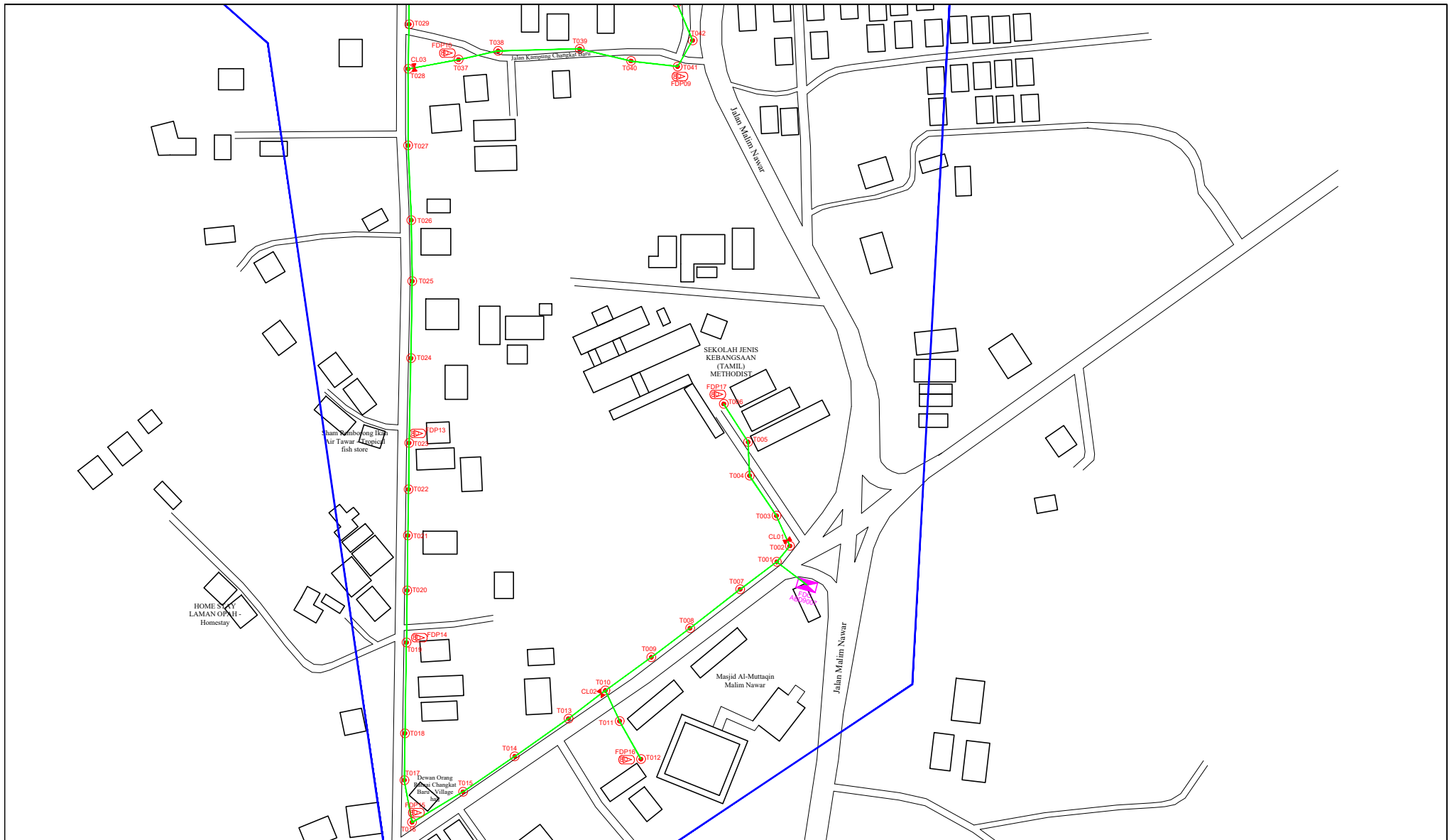
No.	Local Council/ Authority	Remark
1	JKR Kampar	
2	Majlis Perbandaran Kampar	
3	Ladang/Private Estate	
4		
5		
6		



LEGEND	NOS.	NOS.	NOS.	NOS.	NOS.	NOS.	NOS.	NOS.	NOS.
12C FOC	Installed 1:4 / 1:8 / 1:32 splitter	Installed Pole (9m)	S Suspension	1B30 New Manhole (PIT)	Micro-Trenching (Meter)	MH1 MH NO.			
24C FOC	Installed Patch Cord	Installed Pole (7.5M)	T Tension	1C7 New Manhole(JRC7)	Temporary Infra (Meter)	TKS-1 Existing TNB Pole NO.			
48C FOC	FDC	Installed Pole (6.7M)	Pole Ring	FDP Boundary	Loop / Coil (Meter)	PO01 New Pole NO.			
96C FOC	Closure	Existing TNB Pole	FDP with (1:8) splitter	HDD (Meter)	# Active Outdoor Cabinet	CL01 Closure NO.			
144C FOC	Existing Closure	Installed Riser	Existing Manhole	Open Cut (Meter)	PROJECT TITLE : FDC NO.	DP1 FDP NO.			

ACTUAL HOMEPASS :

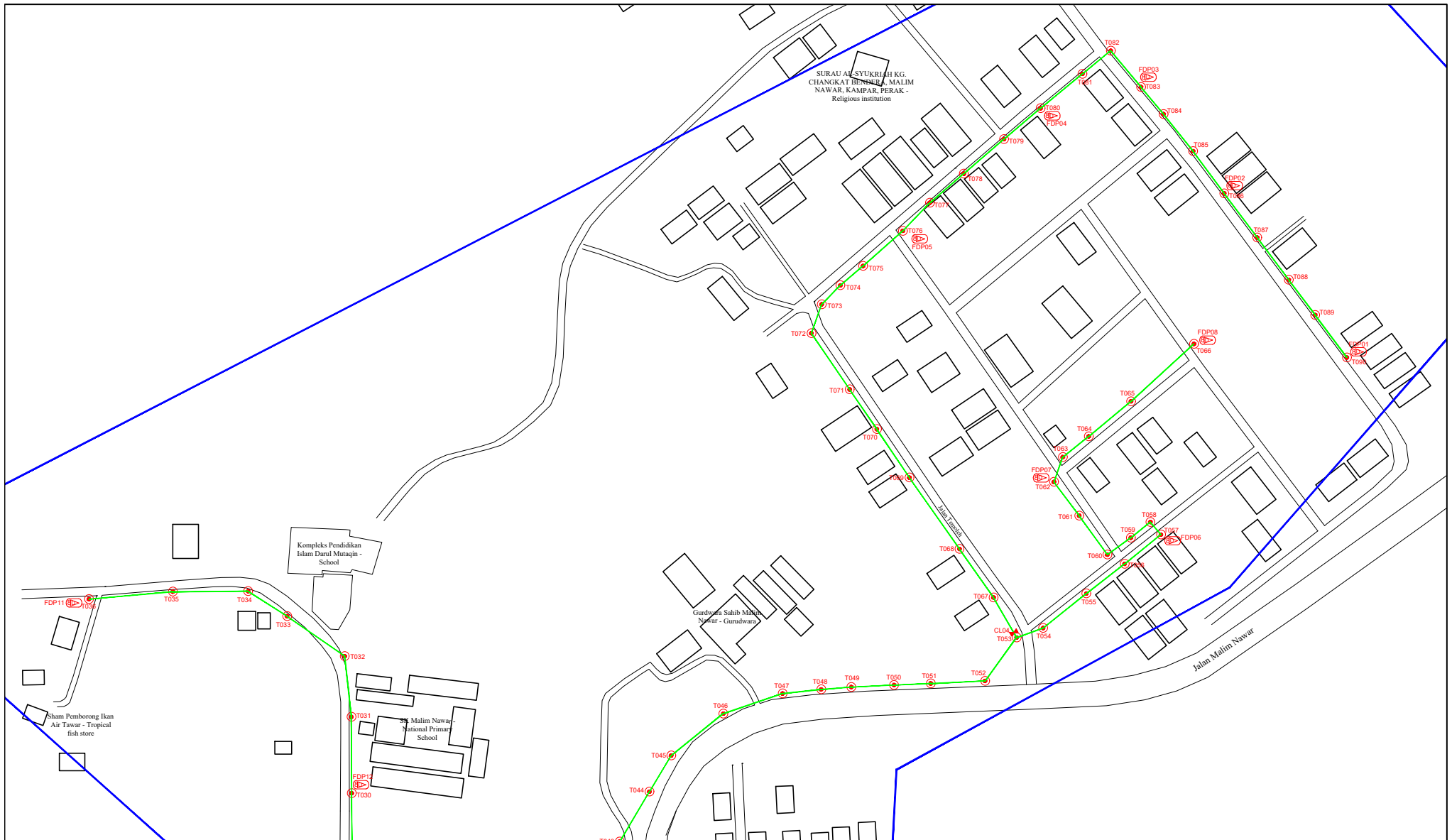
<p>KEY PLAN :</p> <p>POP2 PROJECT IN PERAK</p>	<p>OWNER/DEVELOPER :</p>  <p>APEX COMMUNICATIONS SDN BHD 12th FLOOR, MENARA MIP BANGSA, 60000 KUALA LUMPUR</p>	<p>MAIN CONTRACTOR :</p>  <p>WCWL COMMUNICATIONS SDN BHD 127, JALAN PUKU 3/2, TAMAN PUKUK JAL, BANDAR PUTRA PERAI, 13400 SERI KEMBANGAN, SELANGOR TEL: 403 508 5083 E-MAIL: info@wcwlcommunications.com.my</p>	<p>CONTRACTOR FOR SURVEY, TECHNICAL PROPOSAL AND WAYLEAVE, &amp; PERMIT APPROVAL - POP2 PROJECT</p>	<p>DRAWING TITLE:</p> <p>AS-BUILT SITE PLAN DRAWING ABD9007 SEKOLAH JENIS KEBANGSAAN (TAMIL) METHODIST</p> <p>PROJECT PHASE: POP 2</p>	<p>Design By : ENGINEER</p> <p>Drawn By : CAD ENGINEER</p> <p>Checked By : ENGINEER</p> <p>DRAWING NUMBER : ABC9007-ABD-01</p> <p>THIS PRINT AND ITS COPYRIGHT ARE THE PROPERTY OF APEX COMMUNICATIONS SDN BHD</p>	<p>Date : NOV 2024</p> <p>Scale : NOT TO SCALE</p> <p>Job Number : 1</p> <p>Sheet : 1/3</p> <p>Size : A3</p>
					<p>Design By : ENGINEER</p> <p>Drawn By : CAD ENGINEER</p> <p>Checked By : ENGINEER</p> <p>DRAWING NUMBER : ABC9007-ABD-01</p> <p>THIS PRINT AND ITS COPYRIGHT ARE THE PROPERTY OF APEX COMMUNICATIONS SDN BHD</p>	



LEGEND	NOS.		NOS.		NOS.		NOS.		NOS.		NOS.		NOS.
	12C FOC	Installed 1:4 / 1:8 / 1:32 splitter		Installed Pole (9m)		Suspension		New Manhole (PIT)		Micro-Trenching (Meter)		MH NO.	
	24C FOC	Installed Patch Cord		Installed Pole (7.5M)		Tension		New Manhole(JRC7)		Temporary Infra (Meter)		Existing TNB Pole NO.	
	48C FOC	FDC		Installed Pole (6.7M)		Pole Ring		FDP Boundary		Loop / Coil (Meter)		New Pole NO.	
	96C FOC	Closure		Existing TNB Pole		FDP with (1:8) splitter		HDD (Meter)		Active Outdoor Cabinet		Closure NO.	
	144C FOC	Existing Closure		Installed Riser		Existing Manhole		Open Cut (Meter)		FDC NO.		FDP NO.	

ACTUAL HOMEPASS :

<b>KEY PLAN :</b>  POP2 PROJECT IN PERAK	<b>OWNER/DEVELOPOR :</b>   APEX COMMUNICATIONS SDN BHD 12th FLOOR, MENARA MIP BANGSA, 80000 JOHORE BAHRU, JOHORE NEGERI, MALAYSIA	<b>MAIN CONTRACTOR :</b>   WCWL COMMUNICATIONS SDN BHD 127, JALAN PUTI 3/2, TAMAN PUSKAS JAYA, BANDAR PUTERI, PERAK, 31000 SEREMBAN, SEREMBAN TEL: 4003 5089 0983 E-MAIL: info@wcwlcommunications.com.my	<b>PROJECT TITLE :</b>  CONTRACTOR FOR SURVEY, TECHNICAL PROPOSAL AND WAYLEAVE, & PERMIT APPROVAL - POP2 PROJECT	<b>DRAWING TITLE:</b> AS-BUILT SITE PLAN DRAWING ABC9007 SEKOLAH JENIS KEBANGSAAN (TAMIL) METHODIST	<b>Design By :</b> ENGINEER	<b>Date :</b> NOV 2024
					<b>Drawn By :</b> CAD ENGINEER	<b>Scale :</b> NOT TO SCALE
<b>PROJECT PHASE:</b> POP 2					<b>Checked By :</b> ENGINEER	<b>Job Number :</b> 1
<b>DRAWING NUMBER :</b> ABC9007-ABD-01A					<b>Sheet :</b> 2/3	<b>Size :</b> A3
THIS PRINT AND ITS COPYRIGHT ARE THE PROPERTY OF APEX COMMUNICATIONS SDN BHD						



LEGEND	NOS.		NOS.		NOS.		NOS.		NOS.		NOS.		NOS.
12C FOC		Installed 1:4 / 1:8 / 1:32 splitter		Installed Pole (9m)		S	Suspension	IB30	New Manhole (PIT)	Micro-Trenching (Meter)		MH1	MH NO.
24C FOC	2797	Installed Patch Cord		Installed Pole (7.5M)	90	T	Tension	CT7	New Manhole(JRC7)	Temporary Infra (Meter)		TKS-1	Existing TNB Pole NO.
48C FOC		FDC	1	Installed Pole (6.7M)		⊕	Pole Ring		FDP Boundary	Loop / Coil (Meter)		P001	New Pole NO.
96C FOC		Closure	4	Existing TNB Pole		⊕	FDP with (1:8) splitter	17	HDD (Meter)	Active Outdoor Cabinet		CL01	Closure NO.
144C FOC		Existing Closure		Installed Riser		⊕	Existing Manhole		Open Cut (Meter)	FDC NO.		DP1	FDP NO.

ACTUAL HOMEPASS :

<b>KEY PLAN :</b>  POP2 PROJECT IN PERAK	<b>OWNER/DEVELOPER :</b>  APEX COMMUNICATIONS SDN BHD 122A, FUSION, WISMA WAP BANG, 60000, MALIM P. MANJES, NUKA LUMPUR	<b>MAIN CONTRACTOR :</b>  WCWL COMMUNICATIONS SDN BHD 127, JALAN POU 3/2, TAMAN PONDOK JAYA, BANDAR PUTRA PERANG, 43000 SEREMBAN, SELANGOR TEL: 403 5089 0983 E-MAIL: info@wcwlcommunications.com.my	<b>PROJECT TITLE :</b> CONTRACTOR FOR SURVEY, TECHNICAL PROPOSAL AND WAYLEAVE, & PERMIT APPROVAL - POP2 PROJECT	<b>DRAWING TITLE:</b> AS-BUILT SITE PLAN DRAWING ABC9007 SEKOLAH JENIS KEBANGSAAN (TAMIL) METHODIST	<b>Design By :</b> ENGINEER	<b>Date :</b> NOV 2024
					<b>Drawn By :</b> CAD ENGINEER	<b>Scale :</b> NOT TO SCALE
				<b>Checked By :</b> ENGINEER	<b>Job Number :</b> 1	
				<b>DRAWING NUMBER :</b> ABC9007-ABD-01B	<b>Sheet :</b> 3/3	
				<b>PROJECT PHASE:</b> POP 2	<b>Size :</b> A3	
THIS PRINT AND ITS COPYRIGHT ARE THE PROPERTY OF APEX COMMUNICATIONS SDN BHD						