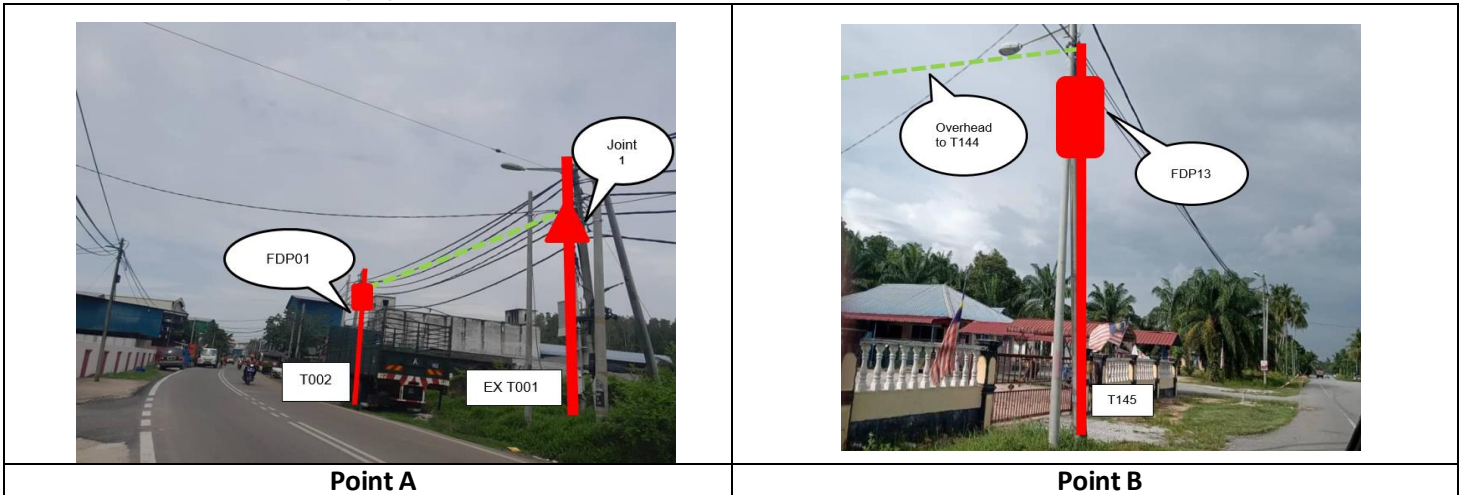


# TECHNICAL PROPOSAL

## POP2 ABC1071 SEKOLAH JENIS KEBANGSAAN (CINA) YEN MIN (D-SIDE)

**Company Name** : KNZ ENGINEERING SDN BHD.  
**Company Address** : NO 60 & 60 A JALAN KLEBANG INDAH 1 MEDAN KLEBANG INDAH 30010 IPOH PERAK  
**Prepared By** : NATHIYA A/P KRISHNAN  
**Date** : 17/12/2024



**Starting Point**

Site / Boundary Name : Bagan Panchor  
 Address : Sekolah Jenis Kebangsaan (C) Yen Min, Bagan Panchor 34900 Pantai Remis  
 District : Manjung  
 Postcode : 34900  
 State : Perak  
 GPS Coordinate : 4.52837, 100.63985  
 LRD : A

**End Point**

Site / Boundary Name : Bagan Panchor  
 Address : Sekolah Agama Rakyat Nur Saadah, Kampung Che Rahmat, 34900 Pantai Remis, Perak  
 District : Manjung  
 Postcode : 34900  
 State : Perak  
 GPS Coordinate : 4.53699, 100.65770  
 LRD : B



PROJEK PENYEDIAAN DAN PENYELENGGARAAN POINT OF PRESENCE (POP) FASA 2: HAB INFRASTRUKTUR GENTIAN OPTIK BERHAMPIRAN DENGAN SEKOLAH, KAWASAN PERINDUSTRIAN, PREMIS KERAJAAN DAN KOMUNITI SEKITARNYA OLEH KEMENTERIAN KOMUNIKASI MALAYSIA – ZON UTARA (KKMM.400-11/17/132(1))



## 1.0 WORK SUMMARY

NO	PROPOSED DISTANCE AND METHOD	UNIT	QUANTITY
1	Horizontal Directional Drilling (HDD)	m	0
2	Carriage Way Open Trench (CW)	m	0
3	Grass Verge Open Trenching (GV)	m	0
4	Micro Trenching (MT)	m	0
Total			0

NO	OTHER INFORMATION	UNIT	QUANTITY
1	Installation of Short Span ADSS Fibre Cables	m	6,310
2	Install New Pole	ea	137
3	Install New JRC7 Manhole	ea	0
4	Install GI Riser 100mm	ea	0
5	Install Fiber Distribution Point	ea	13
6	Install Closure	ea	4
7	Estimated Time Required for Completion	days	30

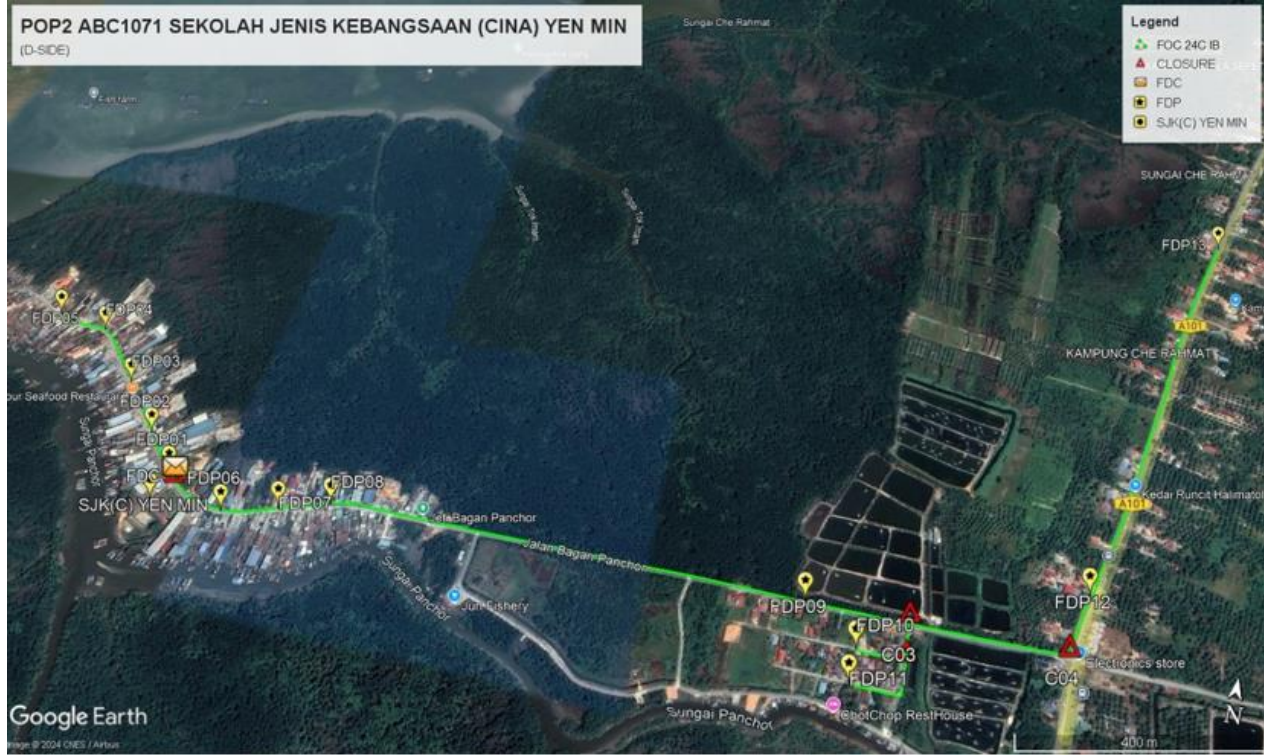
## 2.0 LOCAL AUTHORITY SUMMARY

### Daerah Manjung

Bil	Items	Owner	Quantity	Distance
1	HDD	JKR	-	-
		Majlis	-	-
		Estate / Private Land	-	-
2	New Pole	JKR	35	1,400m
		Majlis	102	4,360m
		Estate / Private Land	-	-
3	Existing TNB Pole	JKR	-	-
		Majlis	-	-
		Estate / Private Land	-	-
Total				5,760m

Site Plan -KMZ (Overview site area)

Proposed FDP and Closure



Proposed New Pole



**Site Plan - KMZ Routing (All Local Authority)**



**Red Colour – JKR Road**

**Blue Colour - Majlis Road**

Site Plan – KMZ Routing (All site area)

Route 1



Route 1.1



**Route 1.2**

Route 2



Route 2.1

### 3.0 PROPOSED NEW POLE

Proposed New Pole Coordinate					
No.	Pole Number	Distance (m)	Latitude	Longitude	Local Authority
1	T001	40	4.528235947	100.6399983	Majlis Perbandaran Manjung
2	T003	40	4.528559068	100.63965	Majlis Perbandaran Manjung
3	T004	40	4.528668852	100.6395454	Majlis Perbandaran Manjung
4	T005	40	4.528787198	100.6394454	Majlis Perbandaran Manjung
5	T006	40	4.528925863	100.6393179	Majlis Perbandaran Manjung
6	T007	40	4.529073756	100.6391893	Majlis Perbandaran Manjung
7	T008	40	4.529197052	100.6390767	Majlis Perbandaran Manjung
8	T009	40	4.529342382	100.6389429	Majlis Perbandaran Manjung
9	T010	40	4.529437304	100.6388496	Majlis Perbandaran Manjung
10	T011	40	4.52957848	100.6387364	Majlis Perbandaran Manjung
11	T012	40	4.529689013	100.6386361	Majlis Perbandaran Manjung
12	T013	40	4.529819828	100.6385101	Majlis Perbandaran Manjung
13	T014	40	4.529932674	100.6384186	Majlis Perbandaran Manjung
14	T015	40	4.530018485	100.6383393	Majlis Perbandaran Manjung
15	T016	40	4.530121443	100.6382544	Majlis Perbandaran Manjung
16	T017	40	4.530208869	100.6381717	Majlis Perbandaran Manjung
17	T018	40	4.530353408	100.6380477	Majlis Perbandaran Manjung
18	T019	40	4.530519567	100.6378984	Majlis Perbandaran Manjung
19	T020	40	4.530700335	100.6377255	Majlis Perbandaran Manjung
20	T021	40	4.530863036	100.6375753	Majlis Perbandaran Manjung
21	T022	40	4.53103316	100.6373314	Majlis Perbandaran Manjung
22	T023	40	4.531078904	100.6371557	Majlis Perbandaran Manjung
23	T024	40	4.531083204	100.6369727	Majlis Perbandaran Manjung
24	T025	40	4.531091343	100.6367793	Majlis Perbandaran Manjung
25	T026	40	4.531111603	100.6366436	Majlis Perbandaran Manjung

### 3.0 PROPOSED NEW POLE

Proposed New Pole Coordinate					
No.	Pole Number	Distance (m)	Latitude	Longitude	Local Authority
26	T027	40	4.531169274	100.636496	Majlis Perbandaran Manjung
27	T028	40	4.531213216	100.6363992	Majlis Perbandaran Manjung
28	T029	40	4.531249875	100.6363194	Majlis Perbandaran Manjung
29	T030	40	4.528021633	100.6403128	Majlis Perbandaran Manjung
30	T031	40	4.527895909	100.6406372	Majlis Perbandaran Manjung
31	T033	40	4.52787561	100.6411324	Majlis Perbandaran Manjung
32	T034	40	4.527893013	100.6412479	Majlis Perbandaran Manjung
33	T035	40	4.527904794	100.6413392	Majlis Perbandaran Manjung
34	T036	40	4.527923955	100.6414383	Majlis Perbandaran Manjung
35	T037	40	4.527947471	100.6415194	Majlis Perbandaran Manjung
36	T039	40	4.528000262	100.6416996	Majlis Perbandaran Manjung
37	T042	40	4.528125846	100.6421091	Majlis Perbandaran Manjung
38	T043	40	4.528178407	100.6422828	Majlis Perbandaran Manjung
39	T044	40	4.528237325	100.6424845	Majlis Perbandaran Manjung
40	T045	40	4.528322492	100.6426908	Majlis Perbandaran Manjung
41	T046	40	4.528370252	100.6429326	Majlis Perbandaran Manjung
42	T048	40	4.528366701	100.6433869	Majlis Perbandaran Manjung
43	T049	40	4.528361266	100.6435761	Majlis Perbandaran Manjung
44	T050	40	4.528354009	100.6437123	Majlis Perbandaran Manjung
45	T051	40	4.528343817	100.6438513	Majlis Perbandaran Manjung
46	T052	40	4.528337806	100.6439934	Majlis Perbandaran Manjung
47	T053	40	4.528341598	100.6441314	Majlis Perbandaran Manjung

### 3.0 PROPOSED NEW POLE

Proposed New Pole Coordinate					
No.	Pole Number	Distance (m)	Latitude	Longitude	Local Authority
48	T054	40	4.528330872	100.6442673	Majlis Perbandaran Manjung
49	T055	40	4.52831668	100.6444466	Majlis Perbandaran Manjung
50	T056	40	4.52831046	100.6446617	Majlis Perbandaran Manjung
51	T057	40	4.528318669	100.6448858	Majlis Perbandaran Manjung
52	T058	40	4.528281936	100.6450992	Majlis Perbandaran Manjung
53	T059	40	4.528280347	100.6453506	Majlis Perbandaran Manjung
54	T060	40	4.528267922	100.6455565	Majlis Perbandaran Manjung
55	T061	40	4.528264701	100.6457565	Majlis Perbandaran Manjung
56	T062	40	4.528253158	100.6459424	Majlis Perbandaran Manjung
57	T063	40	4.528243237	100.6461621	Majlis Perbandaran Manjung
58	T064	40	4.528236172	100.6464837	Majlis Perbandaran Manjung
59	T065	40	4.528226275	100.6468327	Majlis Perbandaran Manjung
60	T066	40	4.528198466	100.6474393	Majlis Perbandaran Manjung
61	T067	40	4.528183644	100.6479006	Majlis Perbandaran Manjung
62	T068	40	4.528172796	100.6483436	Majlis Perbandaran Manjung
63	T069	40	4.528151733	100.6487946	Majlis Perbandaran Manjung
64	T070	40	4.528136547	100.6491728	Majlis Perbandaran Manjung
65	T071	40	4.52811256	100.6496382	Majlis Perbandaran Manjung
66	T072	40	4.528104262	100.6498521	Majlis Perbandaran Manjung
67	T073	40	4.528098584	100.6500792	Majlis Perbandaran Manjung
68	T074	40	4.528084597	100.6503008	Majlis Perbandaran Manjung
69	T075	40	4.528090827	100.6505384	Majlis Perbandaran Manjung
70	T077	40	4.528065291	100.6509162	Majlis Perbandaran Manjung
71	T078	40	4.52805388	100.6511728	Majlis Perbandaran Manjung
72	T079	40	4.528048405	100.6514192	Majlis Perbandaran Manjung
73	T080	40	4.528033652	100.6516168	Majlis Perbandaran Manjung
74	T081	40	4.528030231	100.6518237	Majlis Perbandaran Manjung
75	T082	40	4.52801634	100.6521122	Majlis Perbandaran Manjung
76	T083	40	4.527857861	100.6521275	Majlis Perbandaran Manjung
77	T084	40	4.527620652	100.6521119	Majlis Perbandaran Manjung

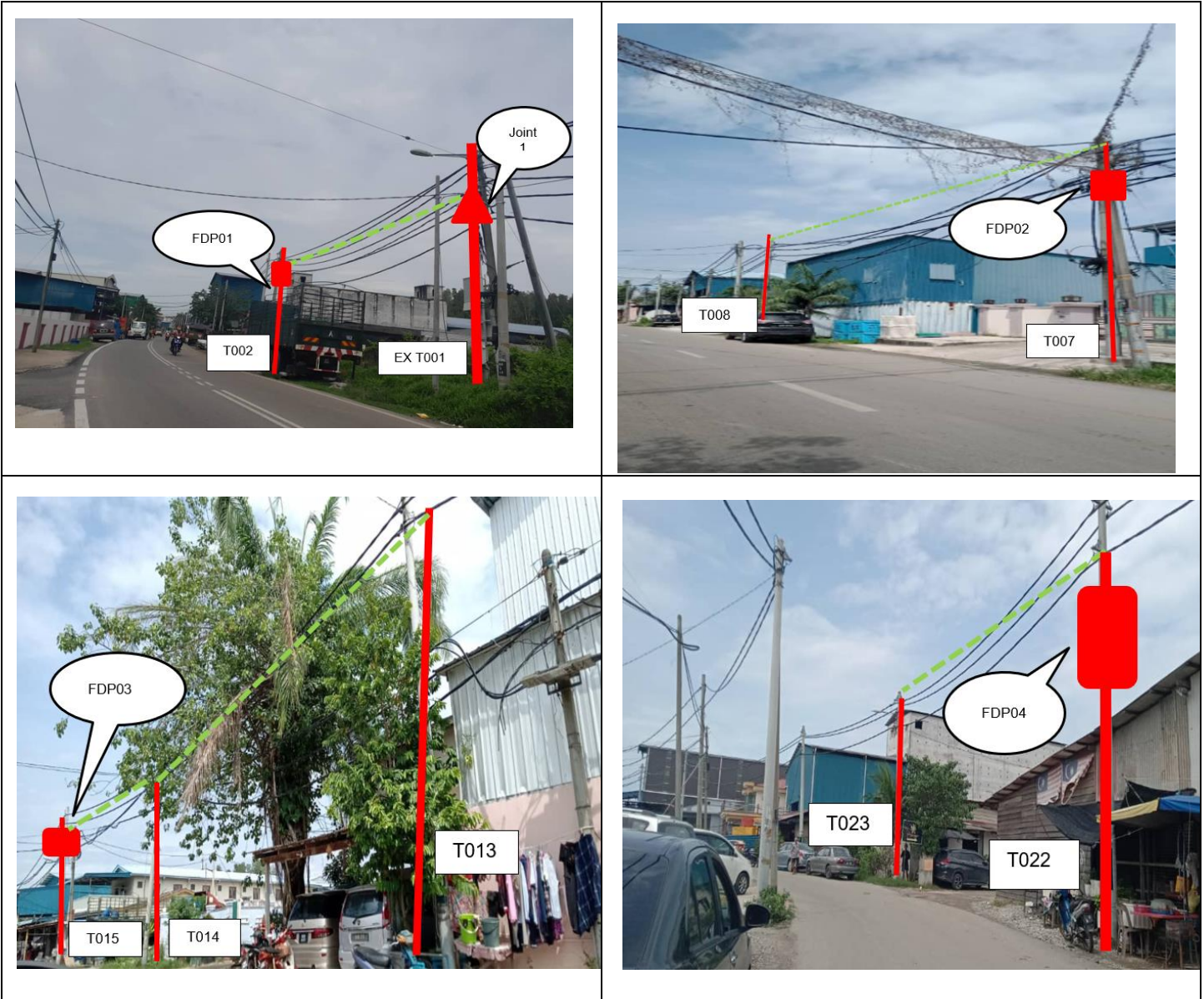
### 3.0 PROPOSED NEW POLE

Proposed New Pole Coordinate					
No.	Pole Number	Distance (m)	Latitude	Longitude	Local Authority
78	T085	40	4.52737359	100.6521088	Majlis Perbandaran Manjung
79	T086	40	4.527377281	100.6519981	Majlis Perbandaran Manjung
80	T087	40	4.52739346	100.651821	Majlis Perbandaran Manjung
81	T088	40	4.527408352	100.6515302	Majlis Perbandaran Manjung
82	T089	40	4.527430353	100.6513617	Majlis Perbandaran Manjung
83	T090	40	4.52723396	100.6520931	Majlis Perbandaran Manjung
84	T091	40	4.527034935	100.6520782	Majlis Perbandaran Manjung
85	T092	40	4.526832962	100.6520678	Majlis Perbandaran Manjung
86	T093	40	4.526838904	100.6519142	Majlis Perbandaran Manjung
87	T094	40	4.52685403	100.6515654	Majlis Perbandaran Manjung
88	T095	40	4.526862742	100.6512941	Majlis Perbandaran Manjung
89	T096	40	4.528009047	100.6522521	Majlis Perbandaran Manjung
90	T097	40	4.528004911	100.6523987	Majlis Perbandaran Manjung
91	T098	40	4.527998904	100.6525511	Majlis Perbandaran Manjung
92	T099	40	4.527988398	100.6527083	Majlis Perbandaran Manjung
93	T100	40	4.527984651	100.6528578	Majlis Perbandaran Manjung
94	T101	40	4.527982288	100.6529833	Majlis Perbandaran Manjung
95	T102	40	4.52797634	100.6531058	Majlis Perbandaran Manjung
96	T103	40	4.527974131	100.6532479	Majlis Perbandaran Manjung
97	T104	40	4.527966585	100.6533985	Majlis Perbandaran Manjung
98	T105	40	4.527957824	100.6535543	Majlis Perbandaran Manjung
99	T106	40	4.52795594	100.6537295	Majlis Perbandaran Manjung
100	T107	40	4.527946665	100.6539019	Majlis Perbandaran Manjung
101	T108	40	4.527935917	100.6540901	Majlis Perbandaran Manjung
102	T109	40	4.527931775	100.6543263	Majlis Perbandaran Manjung
103	T110	40	4.527915709	100.6545001	Majlis Perbandaran Manjung
104	T111	40	4.52805034	100.6545478	JKR Seri Manjung

### 3.0 PROPOSED NEW POLE

Proposed New Pole Coordinate					
No.	Pole Number	Distance (m)	Latitude	Longitude	Local Authority
105	T112	40	4.528241284	100.6546004	JKR Seri Manjung
106	T113	40	4.528382465	100.6546408	JKR Seri Manjung
107	T114	40	4.528492491	100.6546834	JKR Seri Manjung
108	T115	40	4.528611844	100.6547287	JKR Seri Manjung
109	T116	40	4.528738469	100.6547766	JKR Seri Manjung
110	T117	40	4.528834985	100.6548179	JKR Seri Manjung
111	T118	40	4.52897134	100.6548692	JKR Seri Manjung
112	T119	40	4.529117434	100.6549515	JKR Seri Manjung
113	T120	40	4.529298965	100.6550004	JKR Seri Manjung
114	T121	40	4.529475268	100.6550676	JKR Seri Manjung
115	T122	40	4.529657815	100.6551385	JKR Seri Manjung
116	T123	40	4.529822756	100.6552183	JKR Seri Manjung
117	T124	40	4.53001303	100.6552946	JKR Seri Manjung
118	T125	40	4.530216409	100.6553739	JKR Seri Manjung
119	T126	40	4.530483431	100.6554701	JKR Seri Manjung
120	T127	40	4.530783095	100.6555705	JKR Seri Manjung
121	T129	40	4.531373858	100.6557713	JKR Seri Manjung
122	T130	40	4.53163421	100.6558469	JKR Seri Manjung
123	T131	40	4.531828247	100.6559146	JKR Seri Manjung
124	T132	40	4.532108821	100.6560073	JKR Seri Manjung
125	T133	40	4.532291357	100.6560623	JKR Seri Manjung
126	T134	40	4.532607032	100.6561702	JKR Seri Manjung
127	T135	40	4.533003781	100.6563204	JKR Seri Manjung
128	T136	40	4.5333697	100.656418	JKR Seri Manjung
129	T137	40	4.533823982	100.6565529	JKR Seri Manjung
130	T138	40	4.53430326	100.6566872	JKR Seri Manjung
131	T139	40	4.534779317	100.6568586	JKR Seri Manjung
132	T140	40	4.535205679	100.6570044	JKR Seri Manjung
133	T141	40	4.535687393	100.6571788	JKR Seri Manjung
134	T142	40	4.536162395	100.6573685	JKR Seri Manjung
135	T143	40	4.536482486	100.6574959	JKR Seri Manjung
136	T144	40	4.536737599	100.657596	JKR Seri Manjung
137	T145	40	4.536992013	100.657702	JKR Seri Manjung

#### 4.0 SITE PHOTOS - PROPOSED NEW POLE



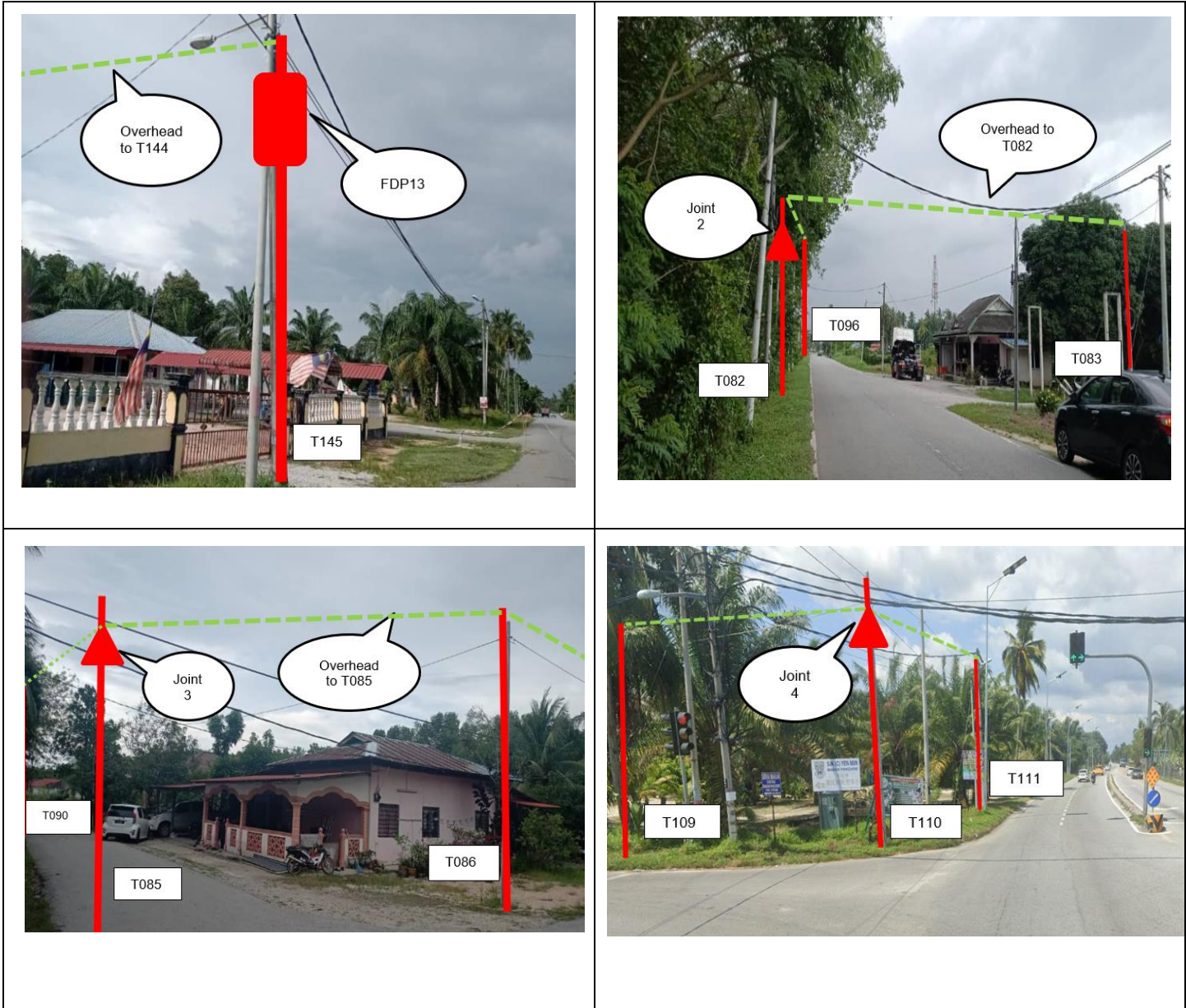
#### 4.0 SITE PHOTOS - PROPOSED NEW POLE





**4.0 SITE PHOTOS - PROPOSED NEW POLE**



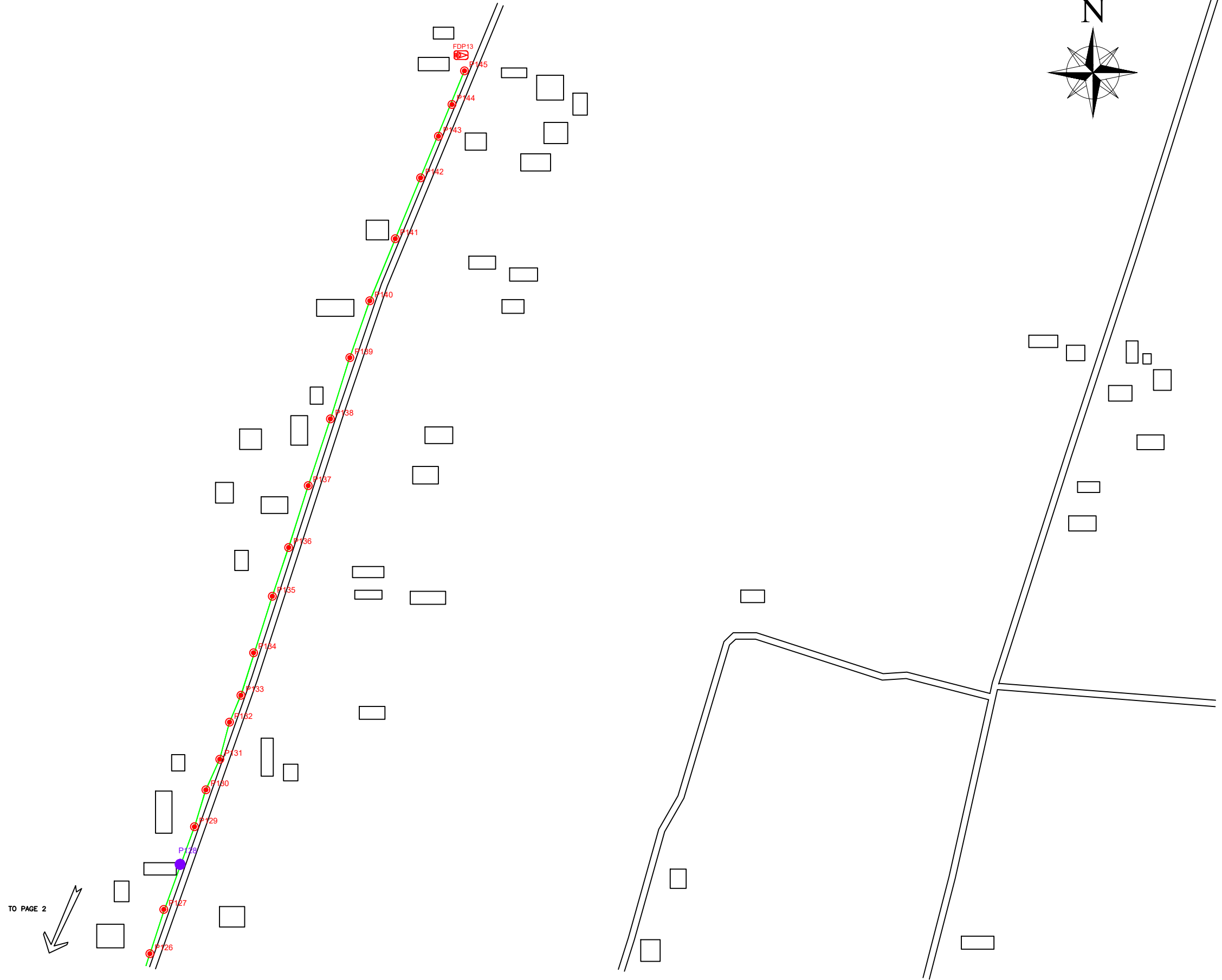
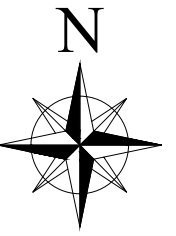
4.0 SITE PHOTOS - PROPOSED NEW POLE



	<p>PROJEK PENYEDIAAN DAN PENYELENGGARAAN POINT OF PRESENCE (POP) FASA 2: HAB INFRASTRUKTUR GENTIAN OPTIK BERHAMPIRAN DENGAN SEKOLAH, KAWASAN PERINDUSTRIAN, PREMIS KERAJAAN DAN KOMUNITI SEKITARNYA OLEH KEMENTERIAN KOMUNIKASI MALAYSIA – ZON UTARA (KKMM.400-11/17/132(1))</p>	
--	--	--

### 5.0 3<sup>rd</sup> PARTIES DEPENDENCIES

NO	LOCAL COUNCIL / AUTHORITY	REMARK
1	Majlis Perbandaran Manjung	4,360M
2	JKR Seri Manjung	1,400M



TO PAGE 2

LEGEND	
	12C FOC
	24C FOC
	48C FOC
	90C FOC
	144C FOC
	Installed 1:4 splitter in FDC
	FDP
	CLOSURE
	NEW MANHOLE (PT)
	INSTALLED POLE
	INSTALLED POLE (9M)
	INSTALLED RISER
	SUSPENSION BIG
	SUSPENSION SMALL
	FDC
	NEW MANHOLE
	HOUSE NUMBER
	EXISTING ALLO POLE
	LOOP
	FDP BOUNDARY
	TENSION SMALL / TENSION BIG
	EXISTING MANHOLE
	CLOSURE NO.
	FDP NO.
	FDC NO.
	MH NO.
	EXISTING TNB POLE NO.
	NEW POLE NO.
	SEE A.A. IN THIS DRAWING
	SEE SHEET XXX

KEY PLAN

PROJECT OWNER

MAIN CONTRACTOR

SUB-CONTRACTOR

KNZ ENGINEERING SDN BHD  
 NO. 60 & 60A, Jalan Klebang Indah 1, Medan Klebang Indah, 30100 Ipoh, Perak  
 No Tel: 019-3695071  
 Email: admin@knzengineering.com.my  
 Website: www.knzengineering.com.my

PROJECT TITLE

SEKOLAH JENIS KEBANGSAAN ( CINA ) YEN MIN

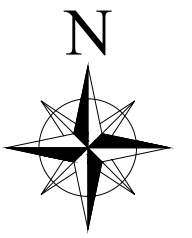
DRAWING TITLE

TP DRAWING POP 2 AT SEKOLAH JENIS KEBANGSAAN ( CINA ) YEN MIN

PROJECT PHASE

PROJECT PHASE 2

DESIGN BY	NABIL	DATE	17/12/2024
DRAWN BY	NABIL	SCALE	NOT TO SCALE
CHECKED BY	AZHAN HARIS	JOB NUMBER	ABC1071
DRAWING NUMBER		ABC1071	
THIS PRINT AND ITS COPYRIGHT ARE THE PROPERTY OF KNZ ENGINEERING SDN. BHD.		1/4	
		A3	



TO PAGE 3  
←

FROM PAGE 1  
↘



LEGEND					
	12C FOC		Installed 1:4 splitter in FDC		INSTALLED POLE (9M)
	24C FOC		FDP		NEW MANHOLE
	48C FOC		CLOSURE		EXISTING MANHOLE
	90C FOC		NEW MANHOLE (PT)		EXISTING TNB POLE NO.
	144C FOC		INSTALLED POLE		NEW POLE NO.
			FDP		EXISTING TNB POLE NO.
			CLOSURE		NEW POLE NO.
			NEW MANHOLE (PT)		EXISTING TNB POLE NO.
			INSTALLED POLE		NEW POLE NO.
			FDP		EXISTING TNB POLE NO.
			CLOSURE		NEW POLE NO.
			NEW MANHOLE (PT)		EXISTING TNB POLE NO.
			INSTALLED POLE		NEW POLE NO.

KEY PLAN

PROJECT OWNER



MAIN CONTRACTOR




SUB-CONTRACTOR



KNZ ENGINEERING SDN BHD  
NO. 60 & 60A, Jalan Klebang Indah 1, Medan Klebang Indah, 30100 Ipoh, Perak  
No Tel: 019-3695071  
Email: admin@knzengineering.com.my  
Website: www.knzengineering.com.my

PROJECT TITLE

SEKOLAH JENIS KEBANGSAAN ( CINA ) YEN MIN

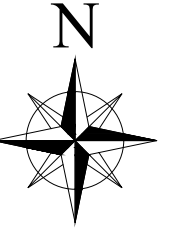
DRAWING TITLE

TP DRAWING POP 2 AT SEKOLAH JENIS KEBANGSAAN ( CINA ) YEN MIN

PROJECT PHASE

PROJECT PHASE 2

DESIGN BY	NABIL	DATE	17/12/2024
DRAWN BY	NABIL	SCALE	NOT TO SCALE
CHECKED BY	AZHAN HARIS	JOB NUMBER	ABC1071
DRAWING NUMBER		ABC1071	
THIS PRINT AND ITS COPYRIGHT ARE THE PROPERTY OF KNZ ENGINEERING SDN. BHD.			2/4
			A3



LEGEND

12C FOC	Installed 1:4 splitter in FDC	INSTALLED POLE (9M)	NEW MANHOLE	TENSION SMALL / TENSION BIG	MH1 MH NO.
24C FOC	FDP	INSTALLED RISER	HOUSE NUMBER	EXISTING MANHOLE	TKS-1 EXISTING TNB POLE NO.
48C FOC	CLOSURE	SUSPENSION BIG	EXISTING ALLO POLE	CLOSURE NO.	P001 NEW POLE NO.
90C FOC	NEW MANHOLE (PT)	SUSPENSION SMALL	LOOP	FDP1 FDP NO.	SEE SHEET XXX
144C FOC	INSTALLED POLE	FDC	FDP BOUNDARY	FDC FDC NO.	SEE SHEET XXX

KEY PLAN

PROJECT OWNER

MAIN CONTRACTOR

SUB-CONTRACTOR

KNZ ENGINEERING SDN BHD  
 NO. 60 & 60A, Jalan Klebang Indah 1, Medan Klebang Indah, 30100 Ipoh, Perak  
 No Tel: 019-3695071  
 Email: admin@knzengineering.com.my  
 Website: www.knzengineering.com.my

PROJECT TITLE

SEKOLAH JENIS KEBANGSAAN (CINA) YEN MIN

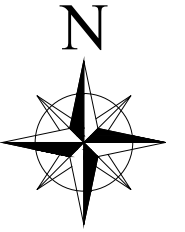
DRAWING TITLE

TP DRAWING POP 2 AT SEKOLAH JENIS KEBANGSAAN (CINA) YEN MIN





PROJECT PHASE

PROJECT PHASE 2

DESIGN BY	NABIL	DATE	17/12/2024
DRAWN BY	NABIL	SCALE	NOT TO SCALE
CHECKED BY	AZHAN HARIS	JOB NUMBER	ABC1071
DRAWING NUMBER		ABC1071	
THIS PRINT AND ITS COPYRIGHT ARE THE PROPERTY OF KNZ ENGINEERING SDN. BHD.		3/4	
		A3	



LEGEND					
	12C FOC		Installed 1:4 splitter in FDC		INSTALLED POLE (9M)
	24C FOC		FDP		INSTALLED RISER
	48C FOC		CLOSURE		SUSPENSION BIG
	90C FOC		NEW MANHOLE (PT)		SUSPENSION SMALL
	144C FOC		INSTALLED POLE		FDC
	NEW MANHOLE		EXISTING MANHOLE		TENSION SMALL / TENSION BIG
	HOUSE NUMBER		EXISTING ALLO POLE		MH NO.
	LOOP		FDP NO.		EXISTING TNB POLE NO.
	FDP BOUNDARY		FDC NO.		NEW POLE NO.

<p>KEY PLAN</p> 	<p>PROJECT OWNER</p> 	<p>MAIN CONTRACTOR</p> 	<p>SUB-CONTRACTOR</p>  <p>KNZ ENGINEERING SDN BHD NO. 60 &amp; 60A, Jalan Klebang Indah 1, Medan Klebang Indah, 30100 Ipoh, Perak No Tel: 019-3695071 Email: admin@knzengineering.com.my Website: www.knzengineering.com.my</p>
---	---	---	--

PROJECT TITLE

SEKOLAH JENIS KEBANGSAAN  
( CINA )  
YEN MIN

DRAWING TITLE

TP DRAWING POP 2 AT  
SEKOLAH JENIS KEBANGSAAN  
( CINA ) YEN MIN

PROJECT PHASE

PROJECT PHASE 2

DESIGN BY	NABIL	DATE	17/12/2024
DRAWN BY	NABIL	SCALE	NOT TO SCALE
CHECKED BY	AZHAN HARIS	JOB NUMBER	ABC1071
DRAWING NUMBER	ABC1071		4/4
THIS PRINT AND ITS COPYRIGHT ARE THE PROPERTY OF KNZ ENGINEERING SDN. BHD.			

FROM PAGE 3

A3