

TECHNICAL PROPOSAL

POP2 AEA3088 SEKOLAH MENENGAH KEBANGSAAN ABU BAKAR AL-BAQIR (D-SIDE)

Company Name	:	SEGALA DELIMA (M) SDN BHD
Company Address	:	No. 8, Jalan Ampang Baru 6B, Pusat Perdagangan Baru, 31350 Ipoh, Perak
Prepared By	:	Nasrohaizan Bin Mustaffa
Date	:	27/1/2025



Point A



Point B

Starting Point

Site / Boundary Name	:	SEKOLAH MENENGAH KEBANGSAAN ABU BAKAR AL-BAQIR
District	:	BAGAN SERAI
Postcode	:	34300
State	:	PERAK
GPS Coordinate	:	4.980116, 100.594489
LRD	:	A

End Point

Site / Boundary Name	:	KAMPUNG SUNGAI GEDONG
Address	:	JALAN TAIPING-BAGAN SERAI
District	:	BAGAN SERAI
Postcode	:	34300
State	:	PERAK
GPS Coordinate	:	4.977777, 100.600000
LRD	:	B

1.0 WORK SUMMARY

NO	PROPOSED DISTANCE AND METHOD	UNIT	QUANTITY
1	Horizontal Directional Drilling (HDD)	m	0
2	Carriage Way Open Trench(CW)	m	0
3	Grass Verge Open Trenching (GV)	m	0
4	Micro Trenching (MT)	m	0
Total			0

NO	OTHER INFORMATION	UNIT	QUANTITY
1	Installation of Short Span ADSS Fiber Cables	m	1750
2	Install New Pole	ea	58
3	Install New JRC7 Manhole	ea	0
4	Install GI Riser 100mm	ea	0
5	Install Fiber Distribution Point and Closure (Splicing, Termination and Testing)	ea	13
6	Estimated Time Required for Completion	days	30

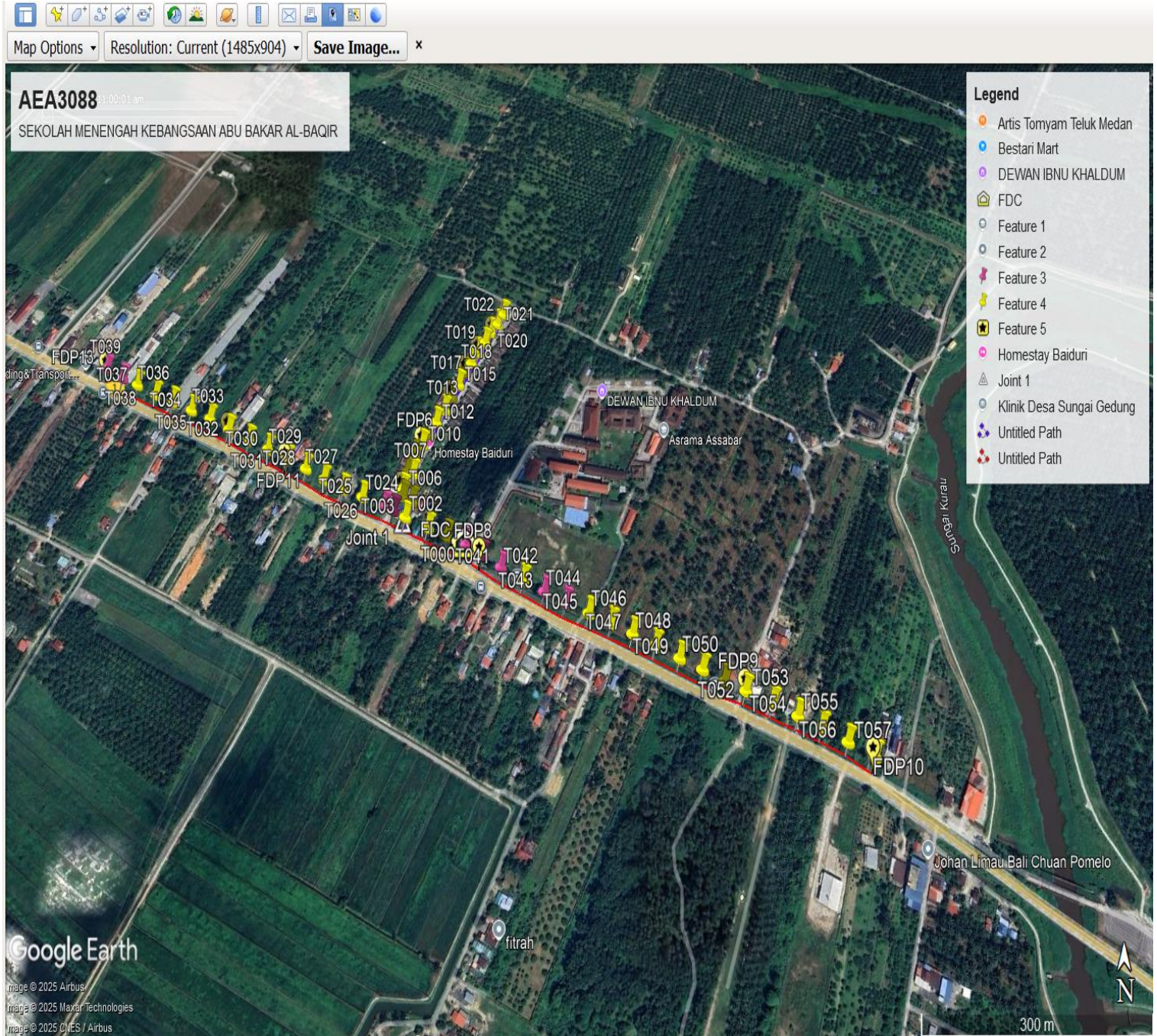
2.0 LOCAL AUTHORITY SUMMARY

Daerah Batu Gajah

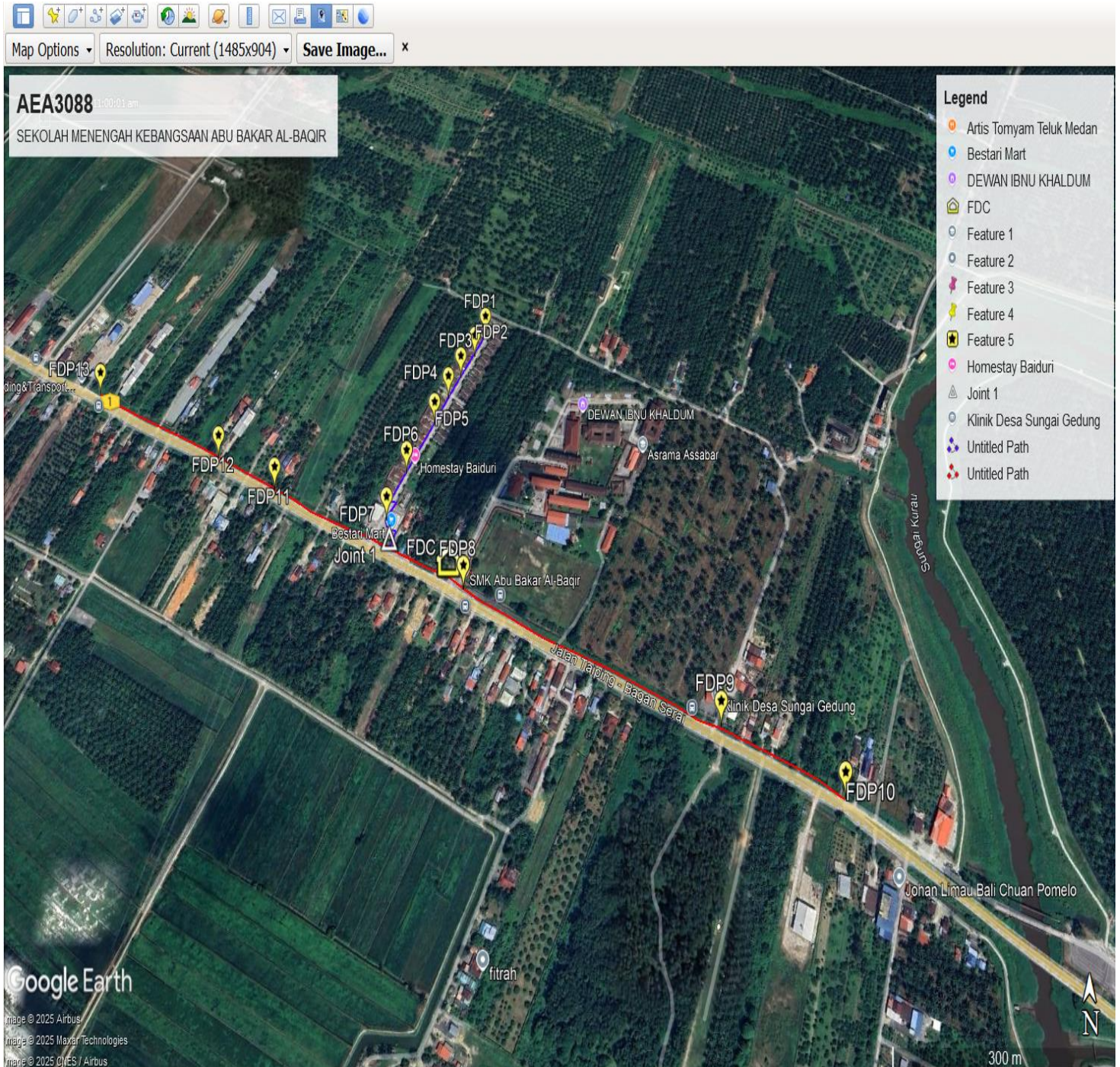
NO	ITEMS	Owner	Quantity	Distance (m)
1	HDD	JKR	-	-
		Majlis	-	-
		Estate / Private Land	-	-
2	New Pole	JKR	39	1350m
		Majlis	19	400m
		Estate / Private Land	-	-
Total Distance (m)				1750m

3.0 SITE PLAN (KMZ)

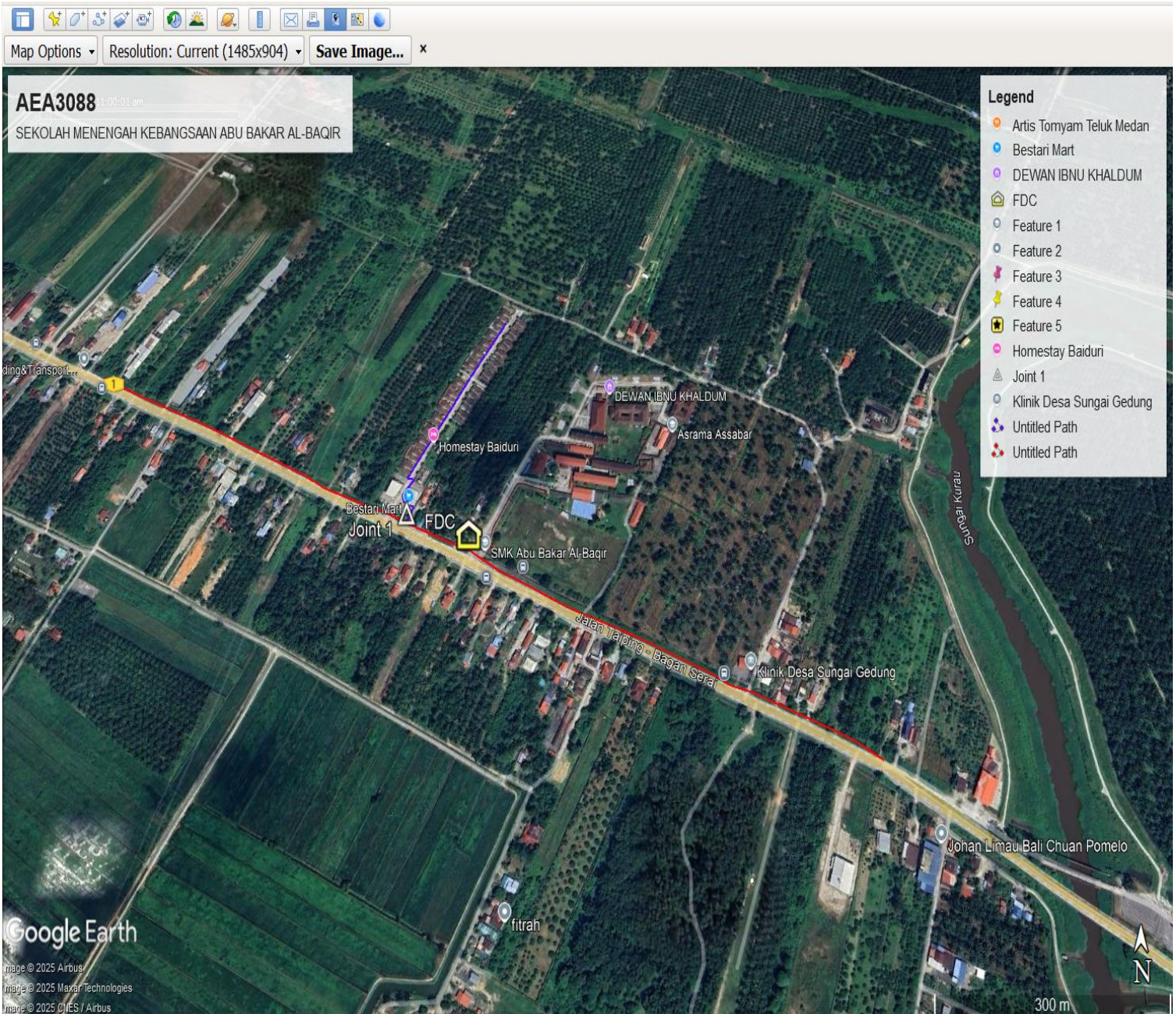
3.1 Overview Site Area (Propose New Pole)



3.2 Proposed FDP and Closure



3.3 Site Plan - KMZ Routing (All Local Authority)



Red Colour - JKR Road
Blue Colour - Majlis Road

4.0 PROPOSED NEW MANHOLE (N/A)

Proposed New Manhole Coordinate					
No.	Manhole Number	Distance (m)	Latitude	Longitude	Local Authority
1	MH01	-	-	-	-
2	MH02	-	-	-	-

4.1 PROPOSED NEW POLE

Proposed New Pole Coordinate					
No.	Pole Number	Distance (m)	Latitude	Longitude	Local Authority
0	T000(9m)	35m	4.980152	100.594454	JKR Daerah Kerian
1	T001	35m	4.980263	100.594176	JKR Daerah Kerian
2	T002	35m	4.980370	100.593898	JKR Daerah Kerian
3	T003	35m	4.980506	100.593557	Majlis Daerah Kerian
4	T004	35m	4.980706	100.593633	Majlis Daerah Kerian
5	T005	35m	4.980766	100.593497	Majlis Daerah Kerian
6	T006	35m	4.980866	100.593484	Majlis Daerah Kerian
7	T007	35m	4.981062	100.593614	Majlis Daerah Kerian
8	T008	35m	4.981078	100.593532	Majlis Daerah Kerian
9	T009	35m	4.981281	100.593621	Majlis Daerah Kerian
10	T010	35m	4.981440	100.593721	Majlis Daerah Kerian
11	T011	35m	4.981585	100.593813	Majlis Daerah Kerian
12	T012	35m	4.981747	100.593904	Majlis Daerah Kerian
13	T013	35m	4.981922	100.594014	Majlis Daerah Kerian
14	T014	35m	4.982109	100.594114	Majlis Daerah Kerian
15	T015	35m	4.982280	100.594211	Majlis Daerah Kerian
16	T016	35m	4.982460	100.594304	Majlis Daerah Kerian
17	T017	35m	4.982589	100.594387	Majlis Daerah Kerian
18	T018	35m	4.982756	100.594487	Majlis Daerah Kerian
19	T019	35m	4.982918	100.594581	Majlis Daerah Kerian
20	T020	35m	4.983081	100.594669	Majlis Daerah Kerian
21	T021	35m	4.983216	100.594766	Majlis Daerah Kerian
22	T022	35m	4.983376	100.594852	Majlis Daerah Kerian
23	T023	35m	4.980591	100.593374	JKR Daerah Kerian
24	T024	35m	4.980646	100.593239	JKR Daerah Kerian
25	T025	35m	4.980768	100.592905	JKR Daerah Kerian
26	T026	35m	4.980873	100.592610	JKR Daerah Kerian
27	T027	35m	4.980996	100.592309	JKR Daerah Kerian
28	T028	35m	4.981139	100.592023	JKR Daerah Kerian
29	T029	35m	4.981264	100.591726	JKR Daerah Kerian
30	T030	35m	4.981397	100.591420	JKR Daerah Kerian
31	T031	35m	4.981520	100.591113	JKR Daerah Kerian
32	T032	35m	4.981656	100.590786	JKR Daerah Kerian

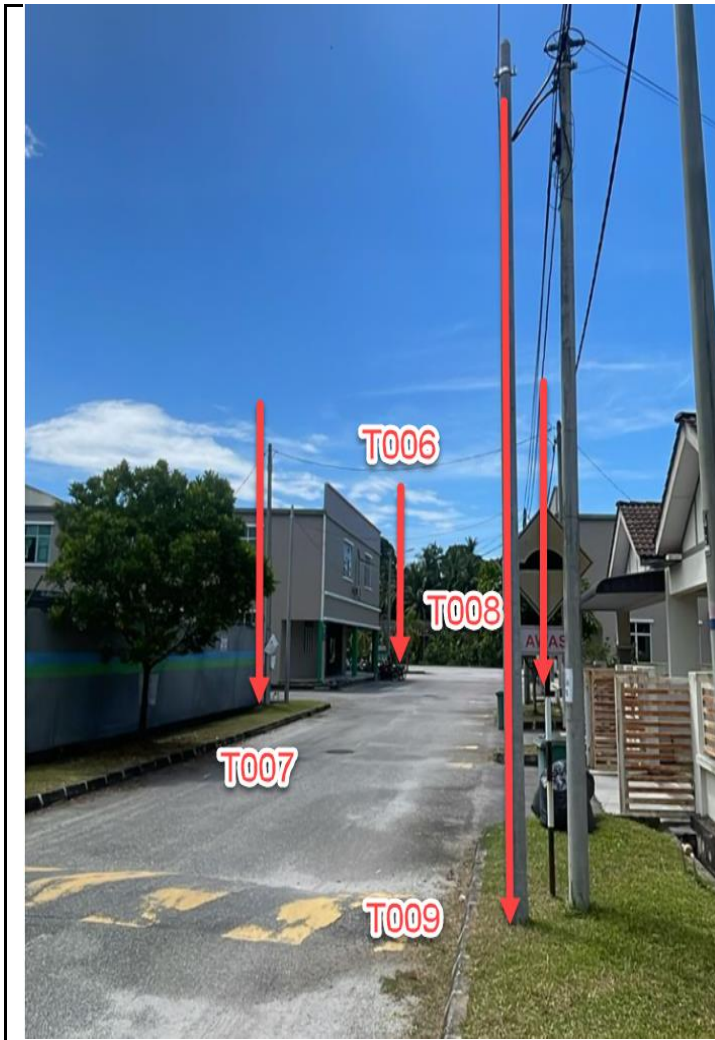
33	T033	35m	4.981810	100.590471	JKR Daerah Kerian
34	T034	35m	4.981934	100.590158	JKR Daerah Kerian
35	T035	35m	4.982066	100.589843	JKR Daerah Kerian
36	T036	35m	4.982178	100.589544	JKR Daerah Kerian
37	T037	35m	4.982322	100.589229	JKR Daerah Kerian
38	T038(9m)	35m	4.982412°	100.588980	JKR Daerah Kerian
39	T039(9m)	35m	4.982549	100.588706	JKR Daerah Kerian
40	T040(9m)	35m	4.980032	100.594689	JKR Daerah Kerian
41	T041(9m)	35m	4.979890	100.594963	JKR Daerah Kerian
42	T042	35m	4.979739	100.595281	JKR Daerah Kerian
43	T043(9m)	35m	4.979601	100.595579	JKR Daerah Kerian
44	T044(9m)	35m	4.979479	100.595880	JKR Daerah Kerian
45	T045	35m	4.979342	100.596201	JKR Daerah Kerian
46	T046	35m	4.979220	100.596507	JKR Daerah Kerian
47	T047	35m	4.979095	100.596796	JKR Daerah Kerian
48	T048	35m	4.978963	100.597101	JKR Daerah Kerian
49	T049	35m	4.978826	100.597423	JKR Daerah Kerian
50	T050	35m	4.978703	100.597723	JKR Daerah Kerian
51	T051	35m	4.978574	100.598010	JKR Daerah Kerian
52	T052	35m	4.978473	100.598282	JKR Daerah Kerian
53	T053	35m	4.978338	100.598622	JKR Daerah Kerian
54	T054	35m	4.978196	100.598937	JKR Daerah Kerian
55	T055	35m	4.978071	100.599233	JKR Daerah Kerian
56	T056	35m	4.977930	100.599556	JKR Daerah Kerian
57	T057	35m	4.977786	100.599885	JKR Daerah Kerian

Type	7.5m	9m	Total
No of pole	51	7	58

**5.0 SITE PHOTOS - PROPOSED HDD AND NEW MANHOLE
(N/A)**

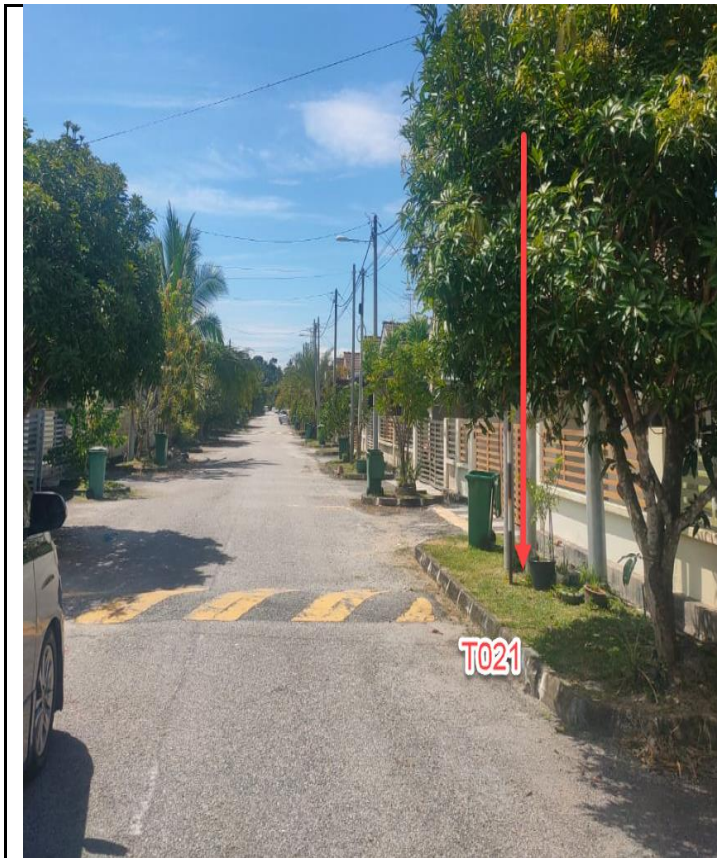
6.0 SITE PHOTOS - PROPOSED NEW POLE

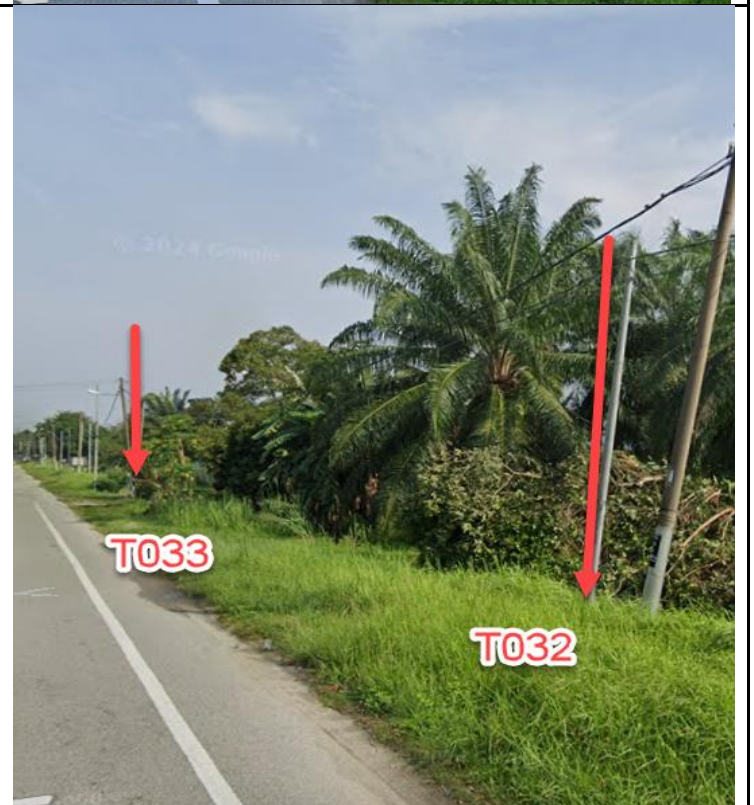
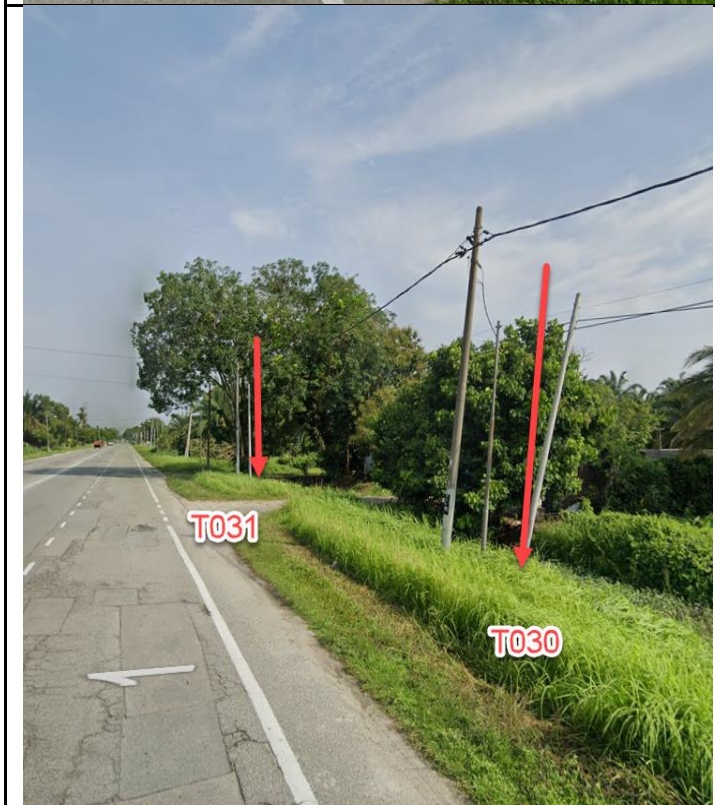


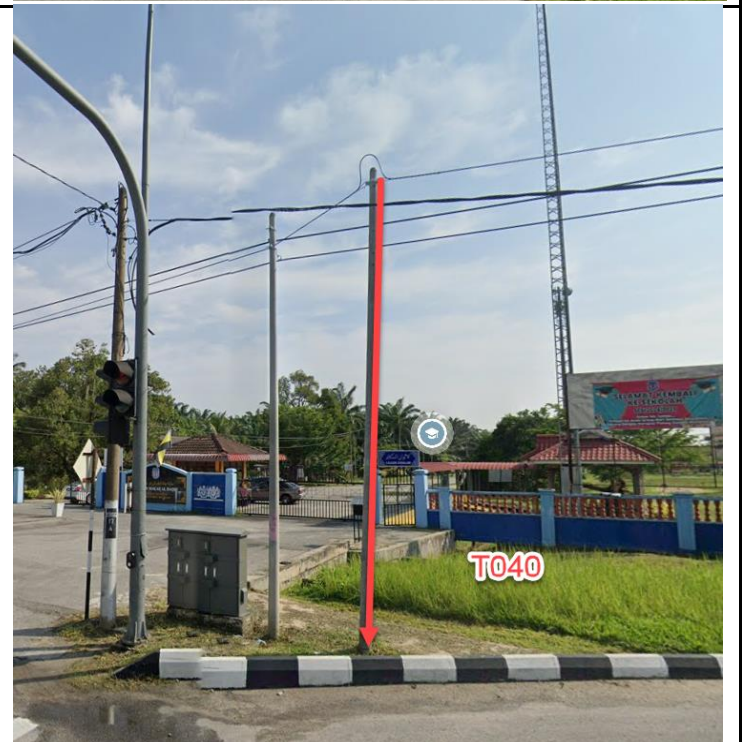
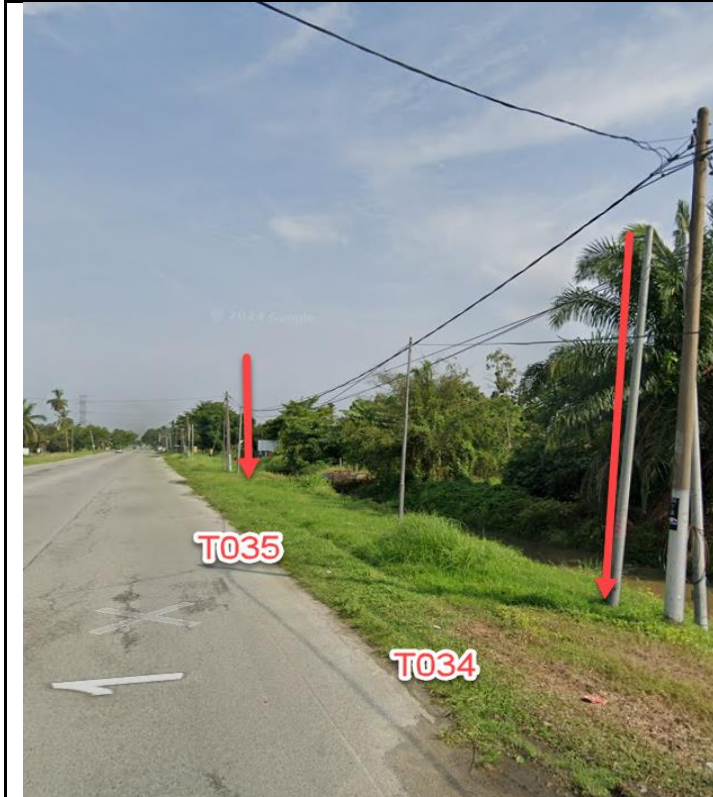


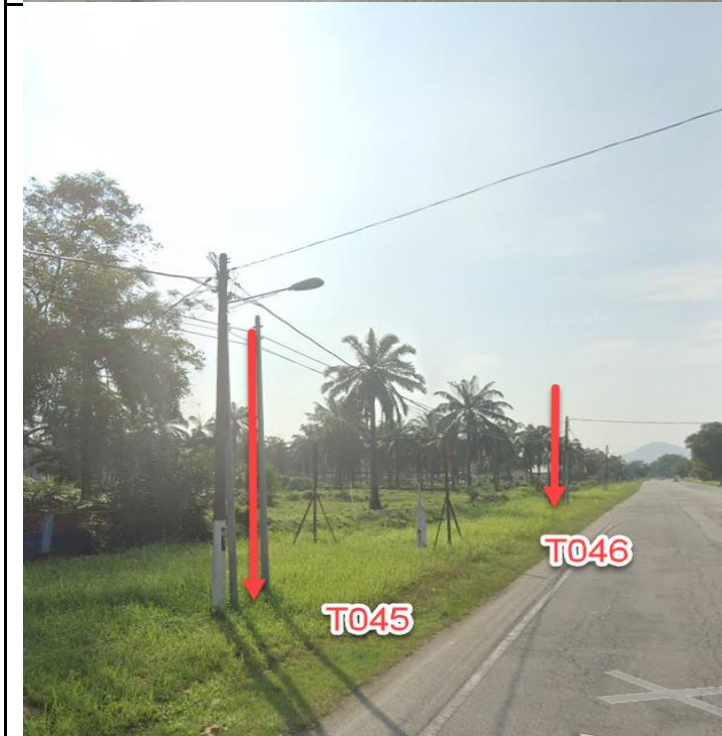


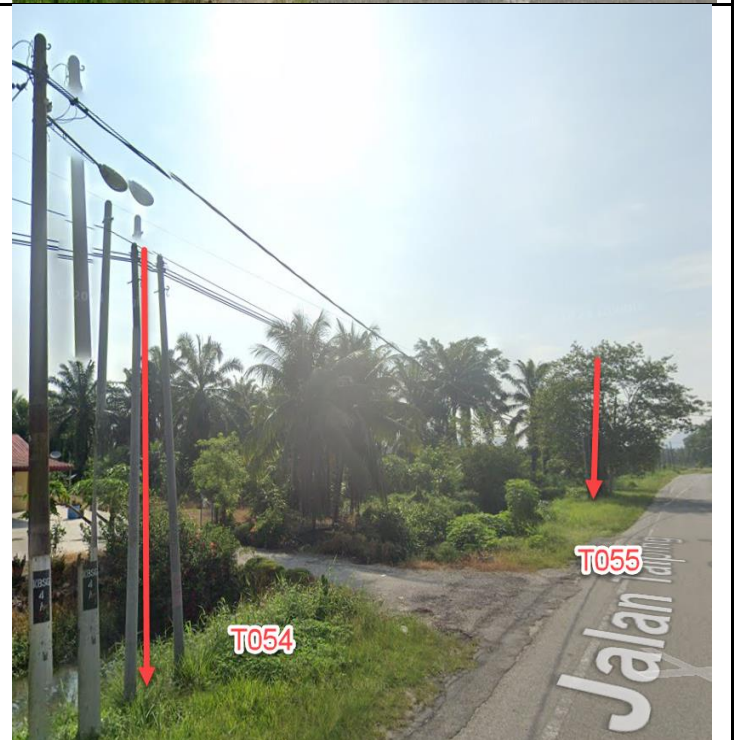
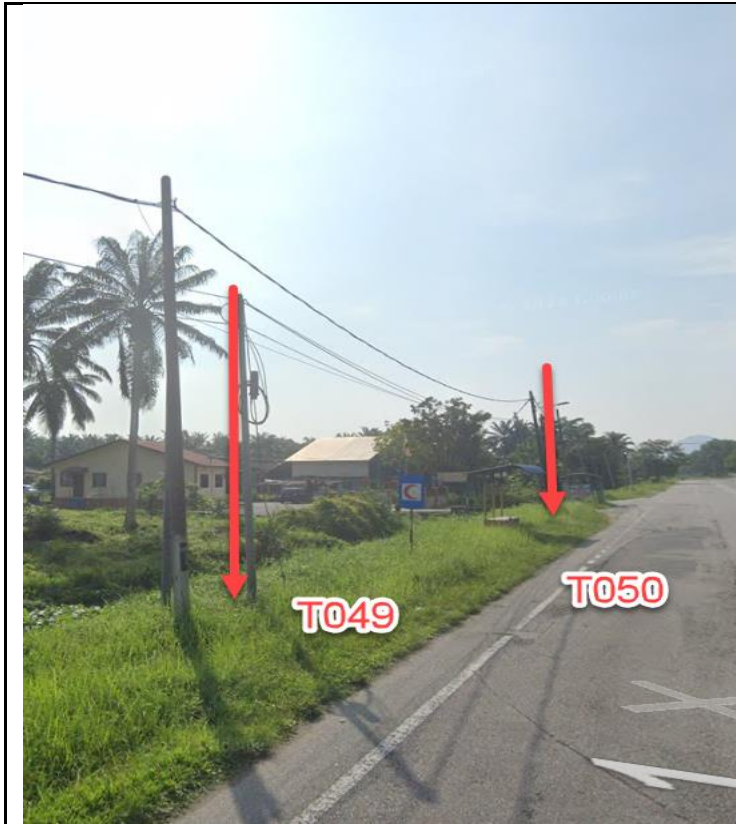














NO	LOCAL COUNCIL / AUTHORITY	REMARK
1	Majlis Daerah Kerian	400m
2	JKR Daerah Kerian	1350m

