

TECHNICAL PROPOSAL

PROJECT DESCRIPTION	SRR FTTH BD_CXXX TAMAN BIDORIA (KAMPUNG BATU EMPAT)
PROJECT NUMBER	TMNA/251751
PREPARED BY	NUR FATIHAH HIDAYAT
COMPANY NAME	MTK COMMUNICATION SDN.BHD
DATE	26 JUNE 2025
REVISION	03

PROJECT DETAIL

BIL	INFO	DETAIL
1	PROJECT NAME	SRR FTTH BD_CXXX TAMAN BIDORIA (KAMPUNG BATU EMPAT)
2	PROJECT NUMBER	TMNA/251751
3	TM NODE	BD
4	REGION	NORTHERN
5	NE ID	PRK
6	TOTAL FTTH PORTS	232
7	TOTAL PROPERTY	419
8	RFSI DATE	30-JULY-25
9	PF (%)	60%

FDC Location & Boundary



MTK COMMUNICATION SDN BHD



ACCESS NETWORK DEVELOPMENT (AND)
KAWASAN AND
Fibre

IBUSAWAT: BD

TAJUK PROJEK:
SRR FTTH BD CXXX
TAMAN BIDORIA
(KAMPUNG BATU
EMPAT)
TMNA/251751

DISEDIAKAN OLEH

NUR FATIMAH HIDAYAT
SITE OFFICER
018-2492640

T/T

FDC Details and Illustration

Propose Location



MTK COMMUNICATION SDN BHD



ACCESS NETWORK DEVELOPMENT (AND)
KAWASAN AND
Fibre

IBUSAWAT: BD

TAJUK PROJEK:

SRR FTTH BD CXXX
TAMAN BIDORIA
(KAMPUNG BATU
EMPAT)
TMNA/251751

DISEDIAKAN OLEH

NUR FATIMAH HIDAYAT
SITE OFFICER
018-2492640

T/T

No	Info	Road/Location	Type	Total Splitter	Coordinate
1	FDC	JALAN RESIDENSI BIDORIA 5, RESIDENSI BIDORIA, KAMPUNG BATU EMPAT, 35500 BIDOR, PERAK	Normal	24	4.078453, 101.243350

1 Way Trenching Details and Illustration

Propose Location



MTK COMMUNICATION SDN BHD



ACCESS NETWORK DEVELOPMENT (AND)
KAWASAN AND
Fibre

IBUSAWAT: BD

TAJUK PROJEK:

SRR FTTH BD CXXX
TAMAN BIDORIA
(KAMPUNG BATU
EMPAT)
TMNA/251751

DISEDIAKAN OLEH

NUR FATIMAH HIDAYAT
SITE OFFICER
018-2492640

T/T

1 Way Trenching Details and Illustration

Propose Location



MTK COMMUNICATION SDN BHD



ACCESS NETWORK DEVELOPMENT (AND)
KAWASAN AND
Fibre

IBUSAWAT: BD

TAJUK PROJEK:

SRR FTTH BD CXXX
TAMAN BIDORIA
(KAMPUNG BATU
EMPAT)
TMNA/251751

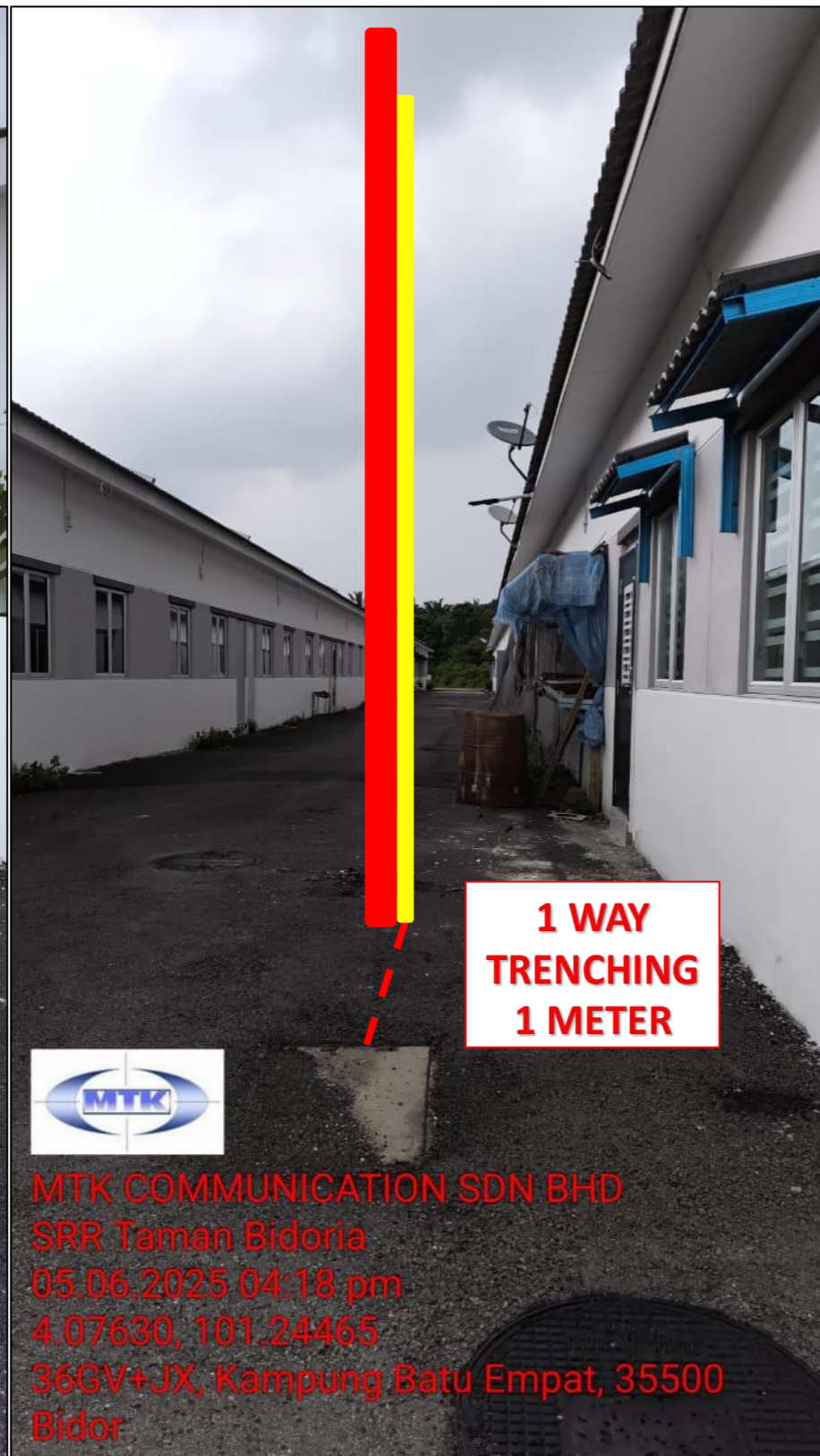
DISEDIAKAN OLEH

NUR FATIMAH HIDAYAT
SITE OFFICER
018-2492640

T/T

1 Way Trenching Details and Illustration

Propose Location



MTK COMMUNICATION SDN BHD



ACCESS NETWORK DEVELOPMENT (AND)
KAWASAN AND
Fibre

IBUSAWAT: BD

TAJUK PROJEK:

SRR FTTH BD CXXX
TAMAN BIDORIA
(KAMPUNG BATU
EMPAT)
TMNA/251751

DISEDIAKAN OLEH

NUR FATIMAH HIDAYAT
SITE OFFICER
018-2492640

T/T

FOC Road Crossing On Pole Concrete 9.0M Details and Illustration

Propose Location



**1 WAY
TRENCHING
1 METER**

**MTK COMMUNICATION SDN BHD
SRR Bidoria
24.06.2025 05:50 pm
4.07942, 101.24334
36HV+W7, Kampung Batu Empat,
35500 Bidor**



MTK COMMUNICATION SDN BHD



ACCESS NETWORK DEVELOPMENT (AND)
KAWASAN AND
Fibre

IBUSAWAT: BD

TAJUK PROJEK:
SRR FTTH BD CXXX
TAMAN BIDORIA
(KAMPUNG BATU
EMPAT)
TMNA/251751

DISEDIAKAN OLEH

NUR FATIHAH HIDAYAT
SITE OFFICER
018-2492640
T/T

FOC Road Crossing On Pole Concrete 7.5M Details and Illustration

Propose Location



MTK COMMUNICATION SDN BHD
SRR Bidoria
24.06.2025 05:51 pm
4.07925, 101.24349
36HV+W7, Kampung Batu Empat,
35500 Bidor



MTK COMMUNICATION SDN BHD



ACCESS NETWORK DEVELOPMENT (AND)
KAWASAN AND
Fibre

IBUSAWAT: BD

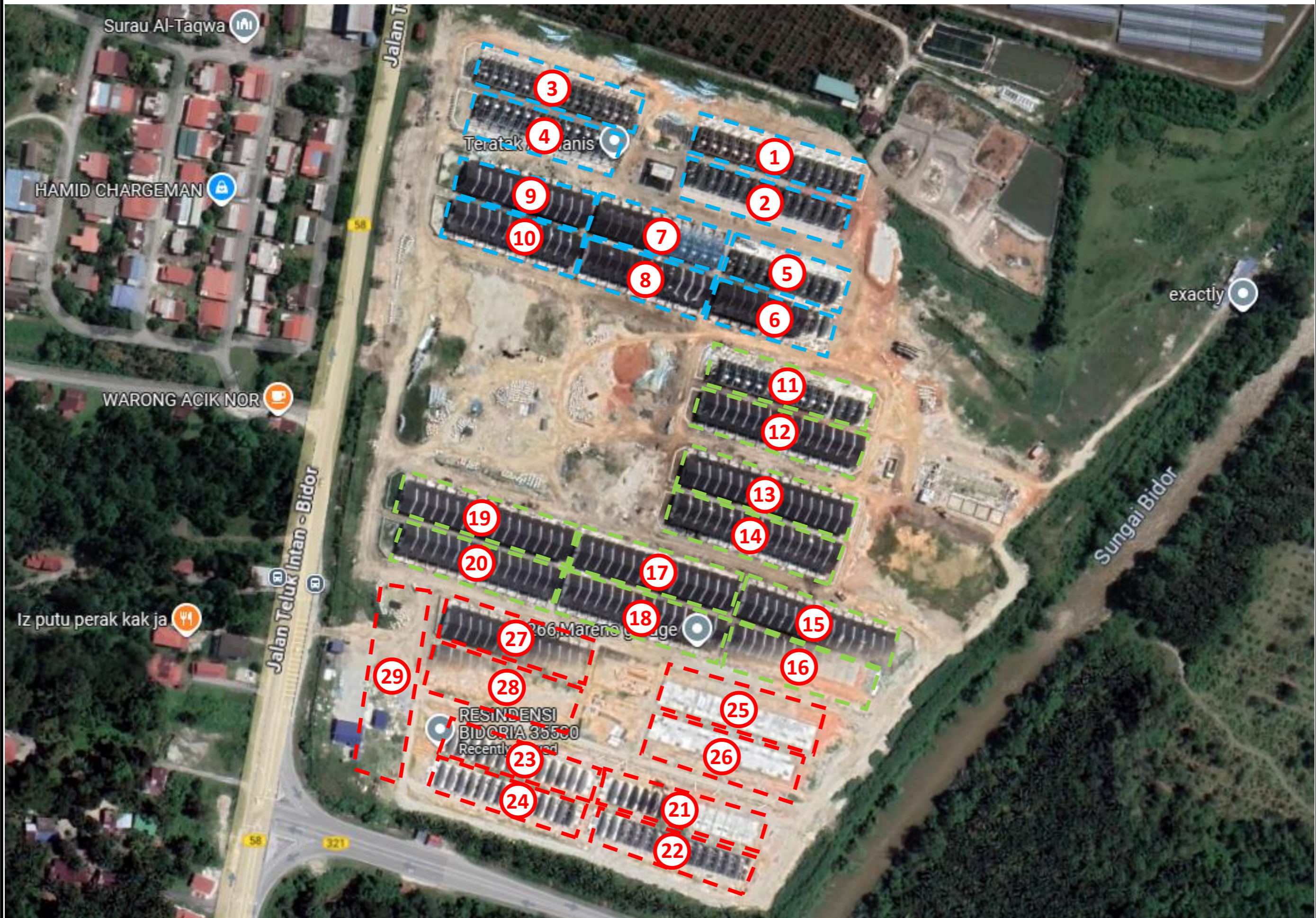
TAJUK PROJEK:
SRR FTTH BD CXXX
TAMAN BIDORIA
(KAMPUNG BATU
EMPAT)
TMNA/251751

DISEDIAKAN OLEH

NUR FATIMAH HIDAYAT
SITE OFFICER
018-2492640

T/T

FDP Boundary



MTK COMMUNICATION SDN BHD



ACCESS NETWORK DEVELOPMENT (AND)
KAWASAN AND
Fibre

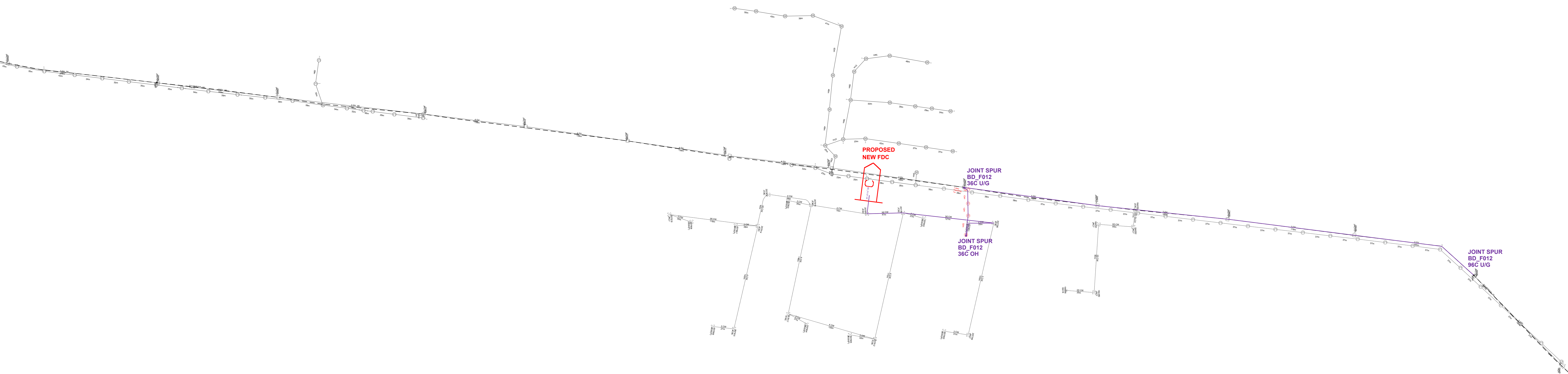
IBUSAWAT: BD

TAJUK PROJEK:
SRR FTTH BD CXXX
TAMAN BIDORIA
(KAMPUNG BATU
EMPAT)
TMNA/251751

DISEDIAKAN OLEH

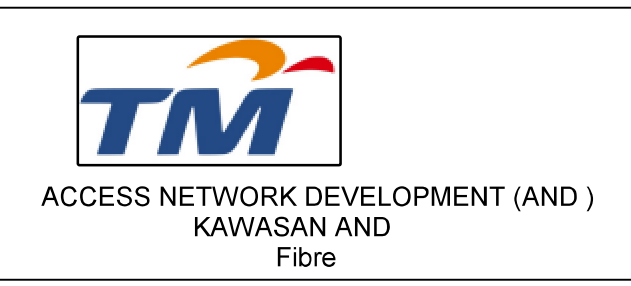
NUR FATIMAH HIDAYAT
SITE OFFICER
018-2492640

T/T



LEGEND

1 Broken line - Proposed Part Item	DSLAM Exchange
2 Solid line - As Built Part Item	DSLAM Frame RT1
Cabinet (Known Type)	RT DSLAM (Support Cabinet)
Phantom Cabinet	Digital Data Network (DDN)
Subscriber Distribution Frame (SDF)	
Maintenance Box	
Distribution Point (Ring Type)	
Duct Path	
Fiber (Steel)	
Fiber (Poly)	
Fiber (Concrete)	
Fiber with stop/turn	
Fiber Drop	
Fiber Distribution Cabinet	
Fiber Remote Terminal	
Transfer Cable	



IBUSAWAT: BD

TAJUK PROJEK:
 TMNA/251751JOINT BD_F12
 SRR FTTH BD_CXXX
 TAMAN BIDORIA
 (KAMPUNG BATU EMPAT)

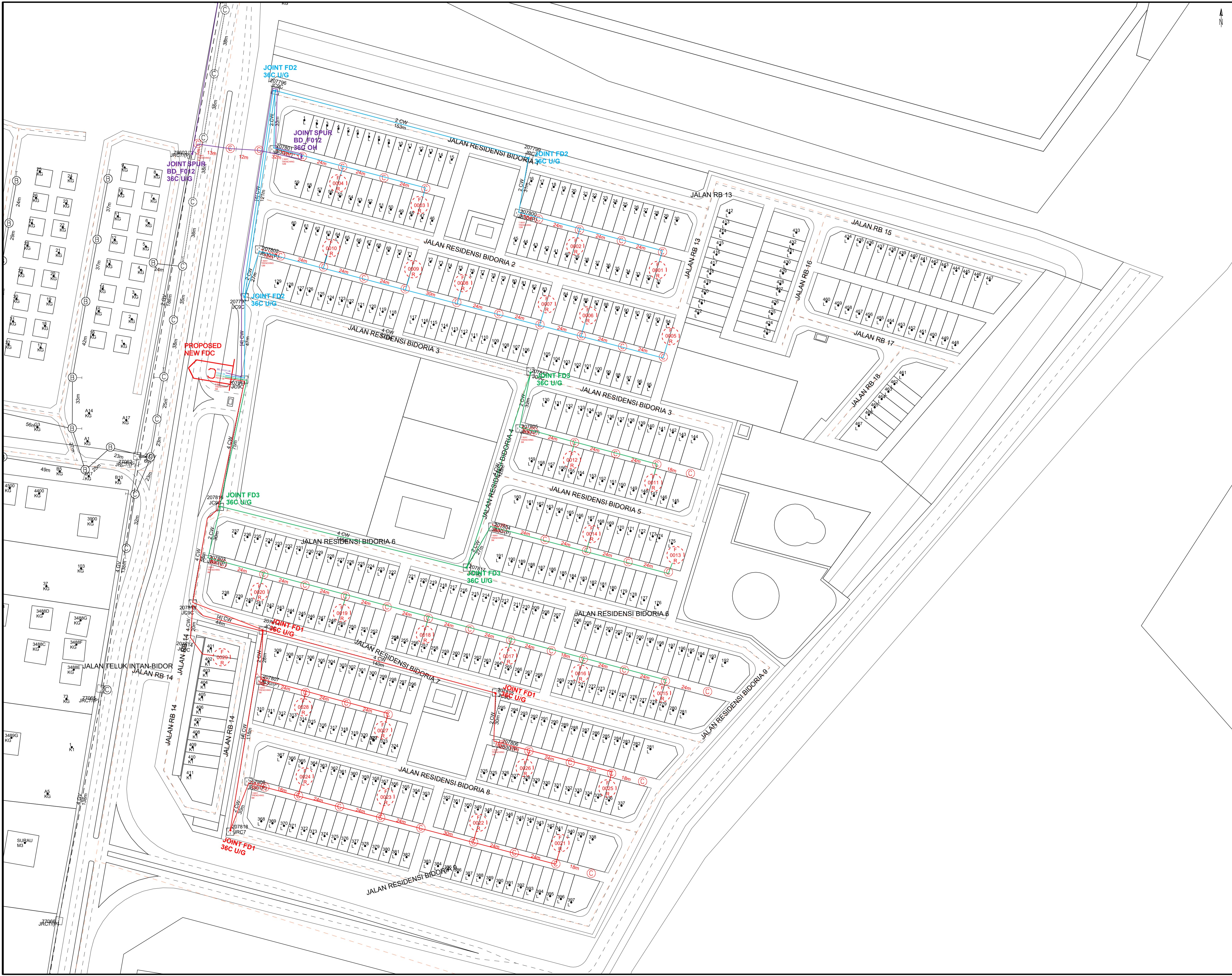
Ukuran: 1:2000

DISEDIAKAN OLEH: T/T

DISEMAK OLEH: T/T

DILULUSKAN: T/T

[swatan_julus] T/T
 Tarikh: _____
 No Lukisan : [no_lukisan]
 No Syt: 1 of 1
 Tarikh Dikeluarkan : 20250603



Tarikh	Catitan Pindaan	T/Tangan

LEGEND

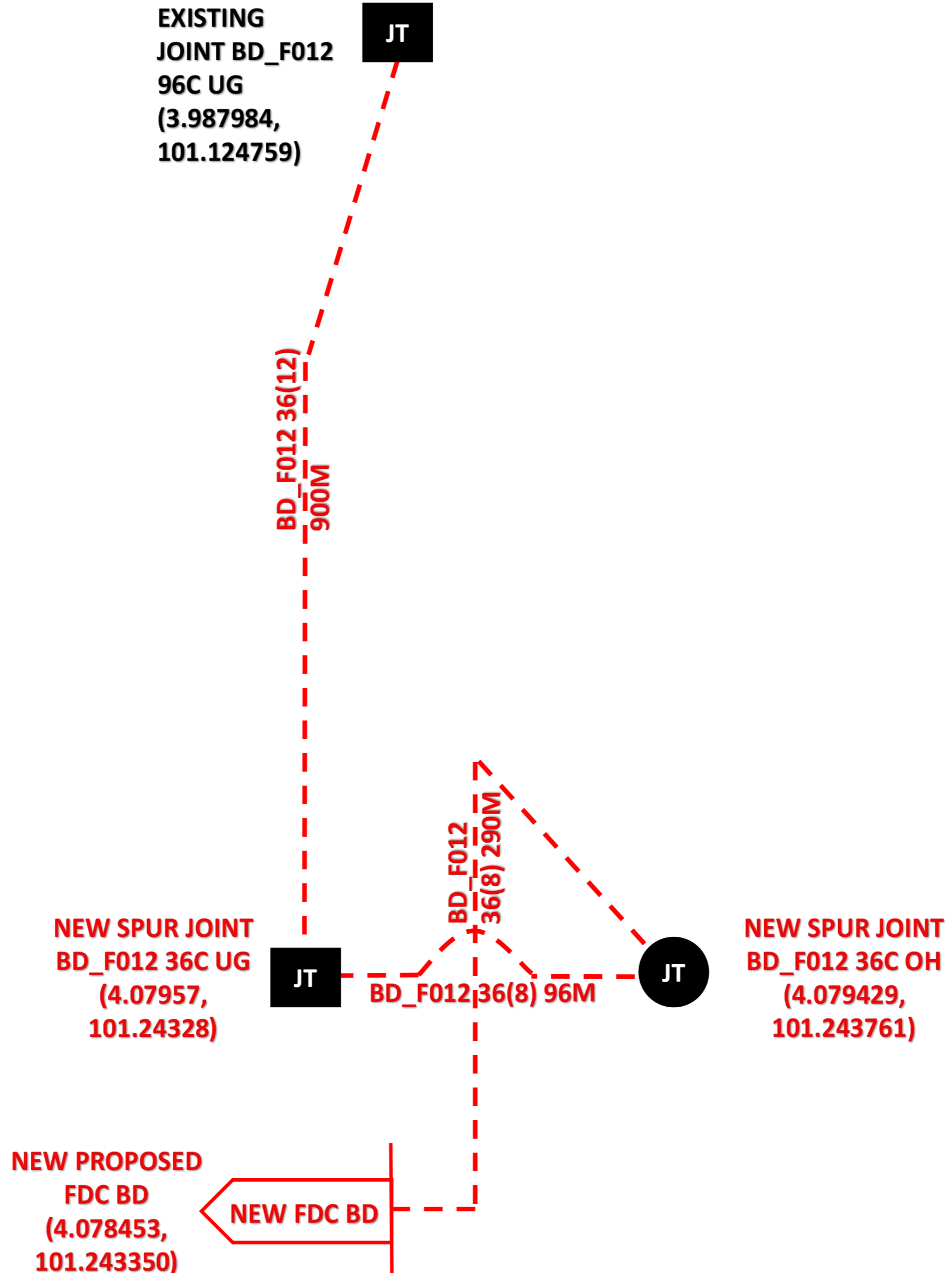
1. Broken line - Proposed Plant Item	Transfer Cable
2. Solid Line - As-Built Plant Item	DSLAM in Exchange
Cabinet (Krone Type)	DSLAM (Inside RT)
Phantom Cabinet	RT DSLAM (Separate Cabinet)
Subscriber Distribution Frame (SDF)	Digital Data Network (DDN)
Manhole/Jointbox	Dust Path
Distribution Point (Ring Type)	Pole (Bas)
100mm	Pole (Kayu)
Pole (Concrete)	Pole with strays/strut
Fiber Stack	Fiber Stack
FDC: Fiber Distribution Cabinet	Fiber Distribution Cabinet
FDP: Fiber Remote Terminal	Fiber Remote Terminal

TAM

**ACCESS NETWORK DEVELOPMENT (AND)
KAWASAN AND
Civil**

IBUSAWAT:	BD
TAJUK PROJEK:	TMNA/251751 SRR FTTH BD CXXX TAMAN BIDORIA (KAMPUNG BATU EMPAT)
Ukuran:	1:1000
DISEDIAKAN OLEH	T/T
DISEMAK OLEH	[jawatan_sமாக]
DILULUSKAN	[jawatan_lulus]
Tarikh:	T/T
No Lukisan :	[no_lukisan]
No Syit:	1 of 1
Tarikh Dikeluarkan :	20250603

E-SIDE
NEW SPUR



FOC 36C UG
= 1,190M
FOC 36C IB
= 96M

JT JOINT
U/G

JT JOINT
O/H



MTK COMMUNICATION SDN BHD



ACCESS NETWORK DEVELOPMENT (AND)
KAWASAN AND
Fibre

IBUSAWAT: BD

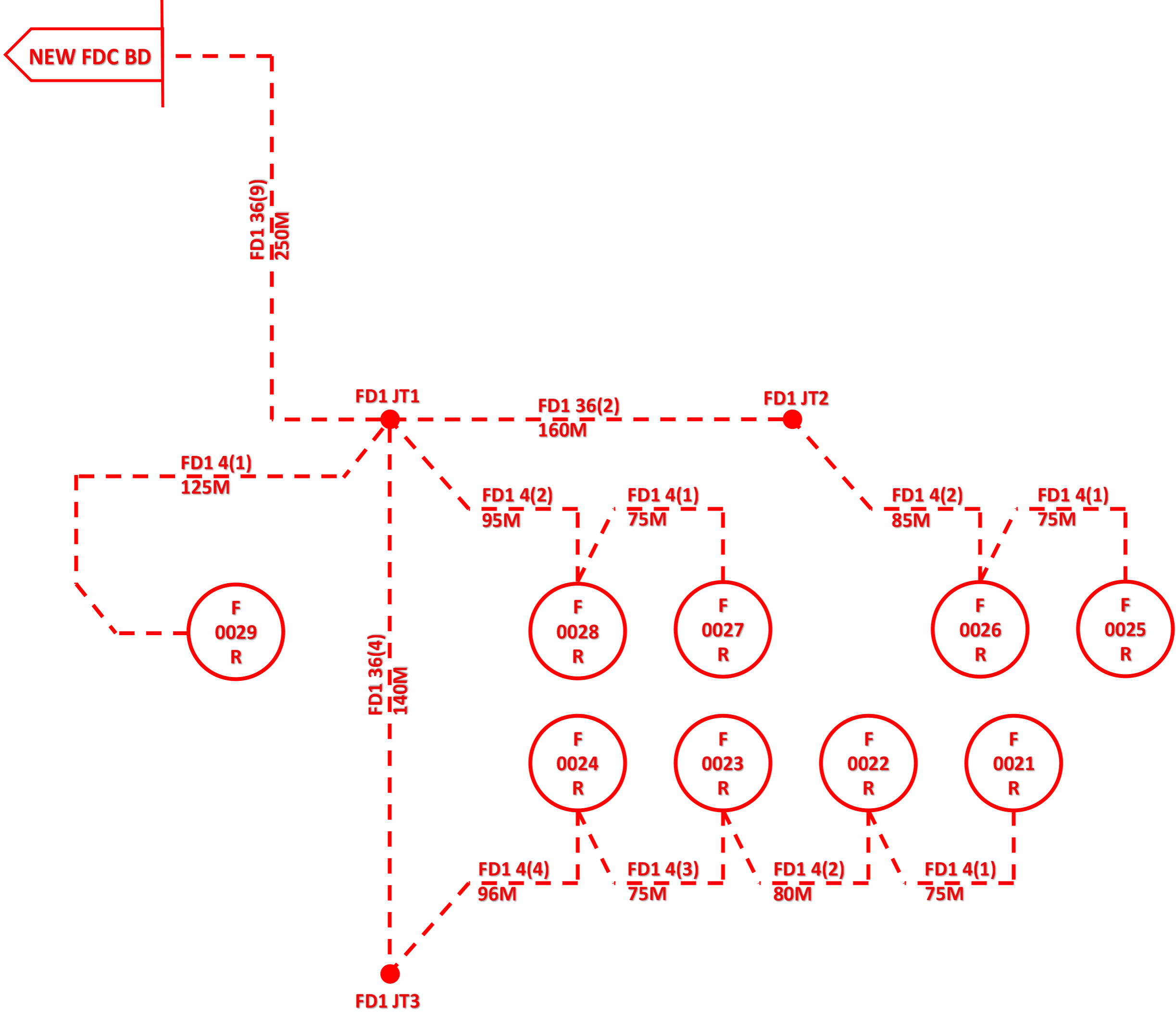
TAJUK PROJEK:
SRR FTTH BD_CXXX
TAMAN BIDORIA
(KAMPUNG BATU
EMPAT)
TMNA/251751

**E-SIDE NEW
SPUR**

DISEDIAKAN OLEH

NUR FATIMAH HIDAYAT
SITE OFFICER
018-2492640

T/T



- FOC 4C UG = 125M
- FOC 36C UG = 550M
- FOC 4C IB = 656M
- JOINT FD1 36C UG
- FDP ON POLE



MTK COMMUNICATION SDN BHD



ACCESS NETWORK DEVELOPMENT (AND) KAWASAN AND Fibre

IBUSAWAT: BD

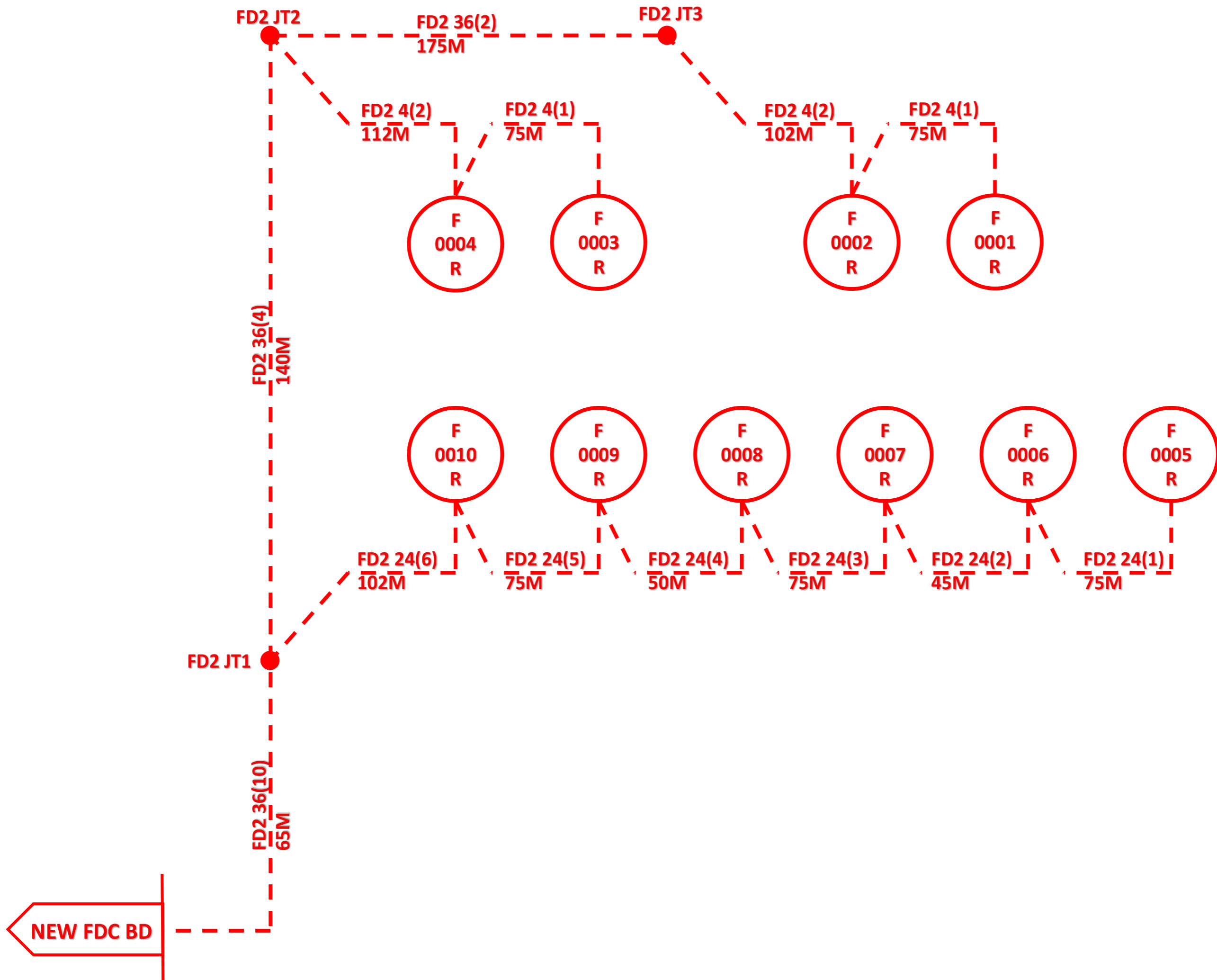
TAJUK PROJEK:
 SRR FTTH BD CXXX
 TAMAN BIDORIA
 (KAMPUNG BATU
 EMPAT)
 TMNA/251751

**D-SIDE NEW
 FD1**

DISEDIAKAN OLEH

NUR FATIMAH HIDAYAT
 SITE OFFICER
 018-2492640

T/T



- ↑ FOC 36C UG = 380M
- ↓ FOC 24C IB = 422M
- FOC 4C IB = 364M
- JOINT FD2 36C UG
- R FDP ON POLE



MTK COMMUNICATION SDN BHD



ACCESS NETWORK DEVELOPMENT (AND) KAWASAN AND Fibre

IBUSAWAT: BD

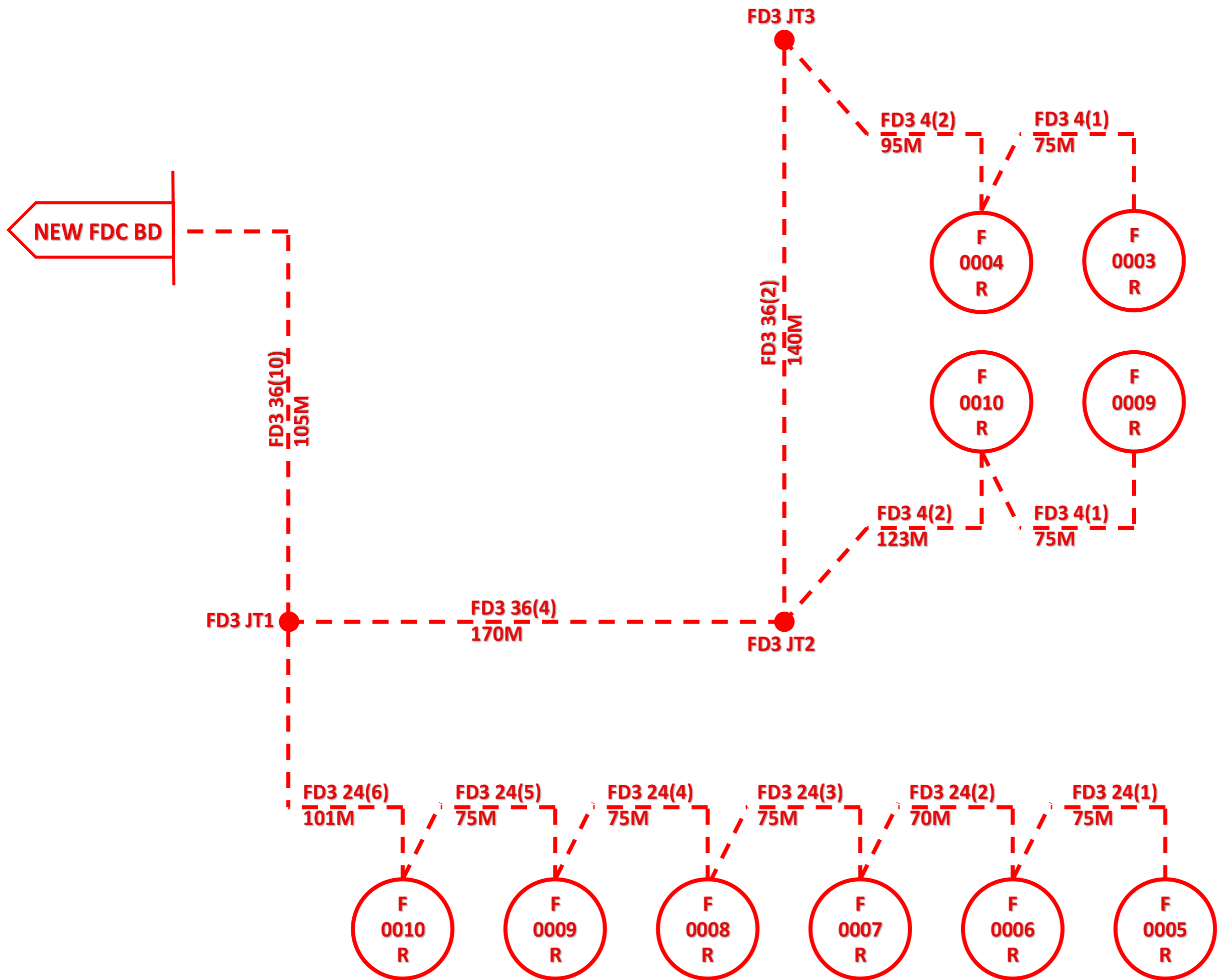
TAJUK PROJEK:
SRR FTTH BD CXXX
TAMAN BIDORIA
(KAMPUNG BATU
EMPAT)
TMNA/251751

D-SIDE NEW
FD2

DISEDIAKAN OLEH

NUR FATIMAH HIDAYAT
 SITE OFFICER
 018-2492640

T/T



- ↑ FOC 36C UG = 415M
- ↓ FOC 24C IB = 471M
- FOC 4C IB = 368M
- JOINT FD3 36C UG
- R FDP ON POLE



MTK COMMUNICATION SDN BHD



ACCESS NETWORK DEVELOPMENT (AND) KAWASAN AND Fibre

IBUSAWAT: _____ BD

TAJUK PROJEK:
SRR FTTH BD CXXX
TAMAN BIDORIA
(KAMPUNG BATU
EMPAT)
TMNA/251751

**D-SIDE NEW
FD3**

DISEDIAKAN OLEH



NUR FATIMAH HIDAYAT
 SITE OFFICER
 018-2492640
 T/T

FDP Details

No	Info	Type	Road/Location	Ports	Properties Covered	Remark
1	DP0001	On Pole	JALAN RESIDENSI BIDORIA 2, RESIDENSI BIDORIA	8	15	FD2
2	DP0002	On Pole	JALAN RESIDENSI BIDORIA 2, RESIDENSI BIDORIA	8	15	FD2
3	DP0003	On Pole	JALAN RESIDENSI BIDORIA 2, RESIDENSI BIDORIA	8	15	FD2
4	DP0004	On Pole	JALAN RESIDENSI BIDORIA 2, RESIDENSI BIDORIA	8	14	FD2
5	DP0005	On Pole	JALAN RESIDENSI BIDORIA 2, RESIDENSI BIDORIA	8	11	FD2
6	DP0006	On Pole	JALAN RESIDENSI BIDORIA 2, RESIDENSI BIDORIA	8	11	FD2
7	DP0007	On Pole	JALAN RESIDENSI BIDORIA 2, RESIDENSI BIDORIA	8	12	FD2
8	DP0008	On Pole	JALAN RESIDENSI BIDORIA 2, RESIDENSI BIDORIA	8	12	FD2
9	DP0009	On Pole	JALAN RESIDENSI BIDORIA 2, RESIDENSI BIDORIA	8	12	FD2
10	DP0010	On Pole	JALAN RESIDENSI BIDORIA 2, RESIDENSI BIDORIA	8	12	FD2
11	DP0011	On Pole	JALAN RESIDENSI BIDORIA 5, RESIDENSI BIDORIA	8	15	FD3
12	DP0012	On Pole	JALAN RESIDENSI BIDORIA 5, RESIDENSI BIDORIA	8	15	FD3
13	DP0013	On Pole	JALAN RESIDENSI BIDORIA 5, RESIDENSI BIDORIA	8	16	FD3
14	DP0014	On Pole	JALAN RESIDENSI BIDORIA 5, RESIDENSI BIDORIA	8	16	FD3
15	DP0015	On Pole	JALAN RESIDENSI BIDORIA 7, RESIDENSI BIDORIA	8	15	FD3
16	DP0016	On Pole	JALAN RESIDENSI BIDORIA 7, RESIDENSI BIDORIA	8	12	FD3
17	DP0017	On Pole	JALAN RESIDENSI BIDORIA 7, RESIDENSI BIDORIA	8	15	FD3
18	DP0018	On Pole	JALAN RESIDENSI BIDORIA 7, RESIDENSI BIDORIA	8	15	FD3
19	DP0019	On Pole	JALAN RESIDENSI BIDORIA 7, RESIDENSI BIDORIA	8	16	FD3
20	DP0020	On Pole	JALAN RESIDENSI BIDORIA 7, RESIDENSI BIDORIA	8	15	FD3
21	DP0021	On Pole	JALAN RESIDENSI BIDORIA 8, RESIDENSI BIDORIA	8	15	FD1
22	DP0022	On Pole	JALAN RESIDENSI BIDORIA 8, RESIDENSI BIDORIA	8	15	FD1
23	DP0023	On Pole	JALAN RESIDENSI BIDORIA 8, RESIDENSI BIDORIA	8	15	FD1
24	DP0024	On Pole	JALAN RESIDENSI BIDORIA 8, RESIDENSI BIDORIA	8	15	FD1

**SEKIAN
TERIMA KASIH**

