

TECHNICAL PROPOSAL

POP2 ABCB009 SEKOLAH JENIS KEBANGSAAN (CINA) YEE HWA (D-SIDE)

Company Name : KNZ Engineering Sdn. Bhd.
Company Address : NO 60 & 60 A JALAN KLEBANG INDAH 1 MEDAN KLEBANG INDAH 30010 IPOH PERAK
Prepared By : Azhan Haris
Date : 24/12/2024



Starting Point

Site / Boundary Name : Selekoh
 Address : Sekolah Jenis Kebangsaan (CINA) YEE HWA 36200 Selekoh, Perak
 District : Bagan Datuk
 Postcode : 36200
 State : Perak
 GPS Coordinate : 3.865931, 100.741402
 LRD : A

End Point

Site / Boundary Name : Selekoh
 Address : 86 Kampung Tebuk Imam Tasir Baroh
 District : Bagan Datuk
 Postcode : 36200
 State : Perak
 GPS Coordinate : 3.886051, 100.740180
 LRD : B



PROJEK PENYEDIAAN DAN PENYELENGGARAAN POINT OF PRESENCE (POP) FASA 2 : HAB INFRASTRUKTUR GENTIAN OPTIK BERHAMPIRAN DENGAN SEKOLAH, KAWASAN PERINDUSTRIAN, PREMIS KERAJAAN DAN KOMUNITI SEKITARNYA OLEH KEMENTERIAN KOMUNIKASI MALAYSIA - ZON UTARA (KKM.4.00-11/17/132(1))



1.0 WORK SUMMARY

NO	PROPOSED DISTANCE AND METHOD	UNIT	QUANTITY
1	Horizontal Directional Drilling (HDD)	m	80
2	Carriage Way Open Trench (CW)	m	0
3	Grass Verge Open Trenching (GV)	m	6
4	Micro Trenching (MT)	m	0
Total			86

NO	OTHER INFORMATION	UNIT	QUANTITY
1	Installation of Short Span ADSS Fibre Cables	m	7,850
2	Install New Pole	ea	152
3	Install New JRC7 Manhole	ea	2
4	Install GI Riser 100mm	ea	2
5	Install Fiber Distribution Point	ea	13
6	Install Closure	ea	3
7	Estimated Time Required for Completion	days	30

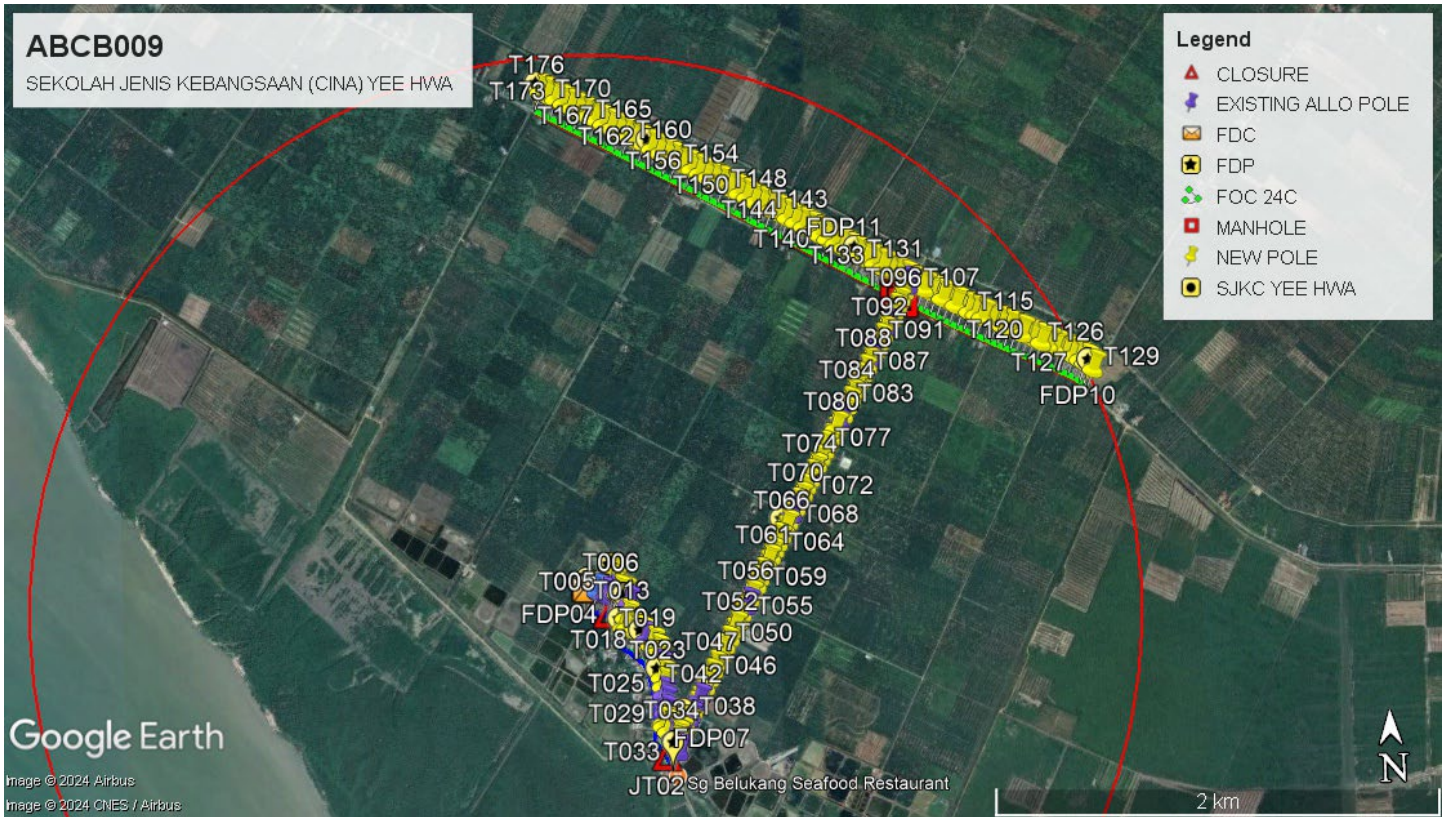
2.0 LOCAL AUTHORITY SUMMARY

Daerah Bagan Datuk

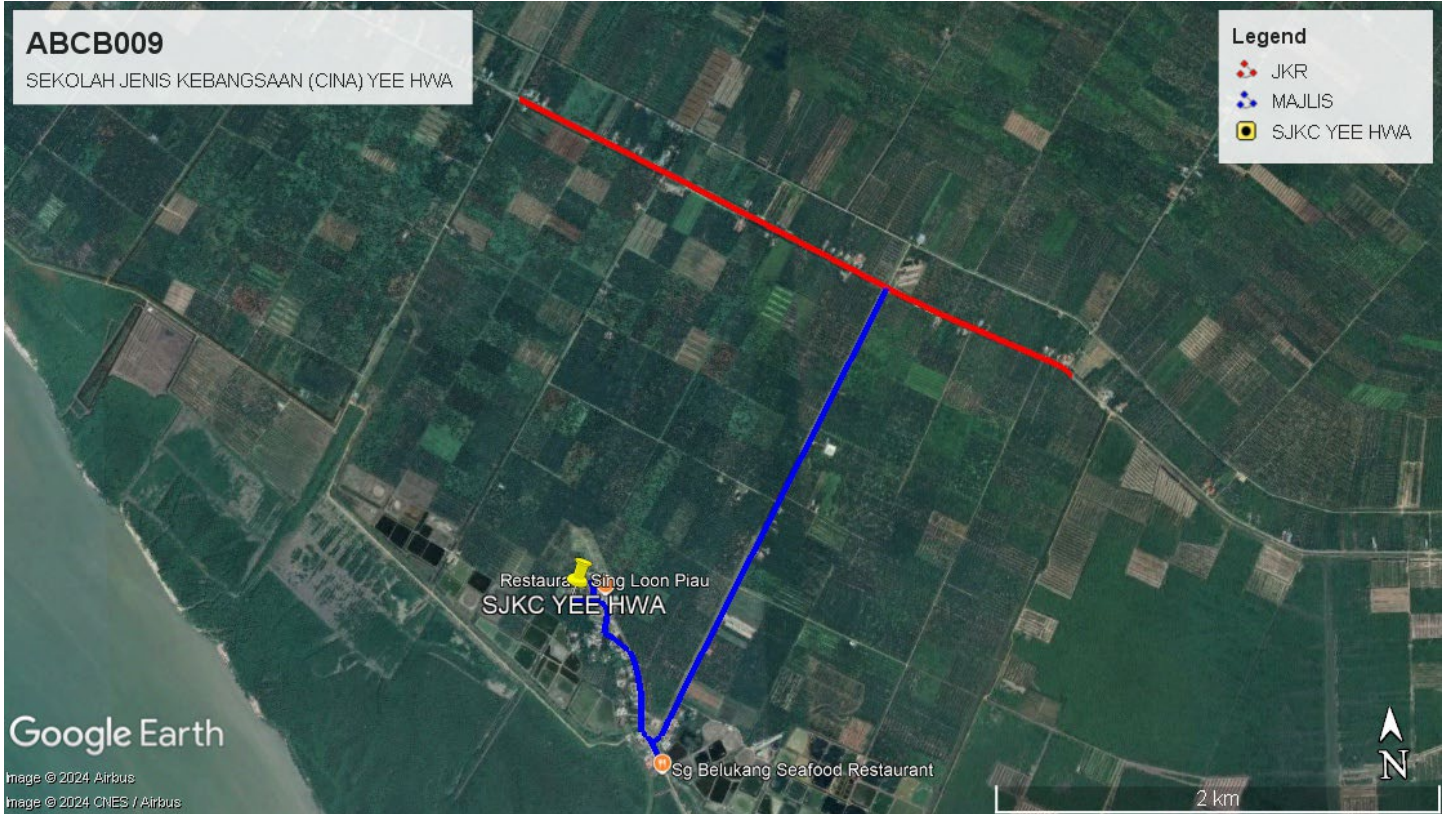
Bil	Items	Owner	Quantity	Distance
1	HDD	JKR	-	80m
		Majlis	-	-
		Estate / Private Land	-	-
2	New Pole	JKR	77	3,000m
		Majlis	75	3,920m
		Estate / Private Land	-	-
3	Existing TNB Pole	JKR	-	-
		Majlis	-	-
		Estate / Private Land	-	-
Total				7,000m

3.0 SITE PLAN (KMZ)

3.1 Overview Site Area



3.2 Site Plan - KMZ Routing (All Local Authority)

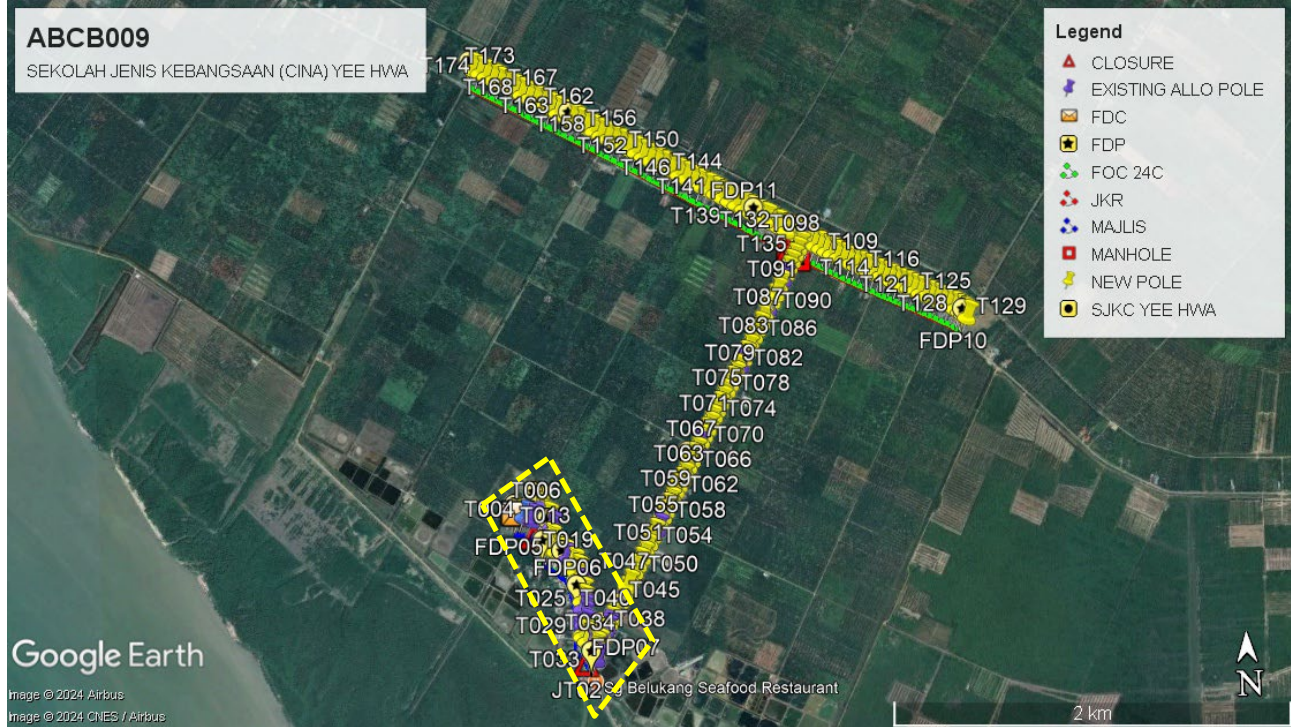


Blue Colour - Majlis Road

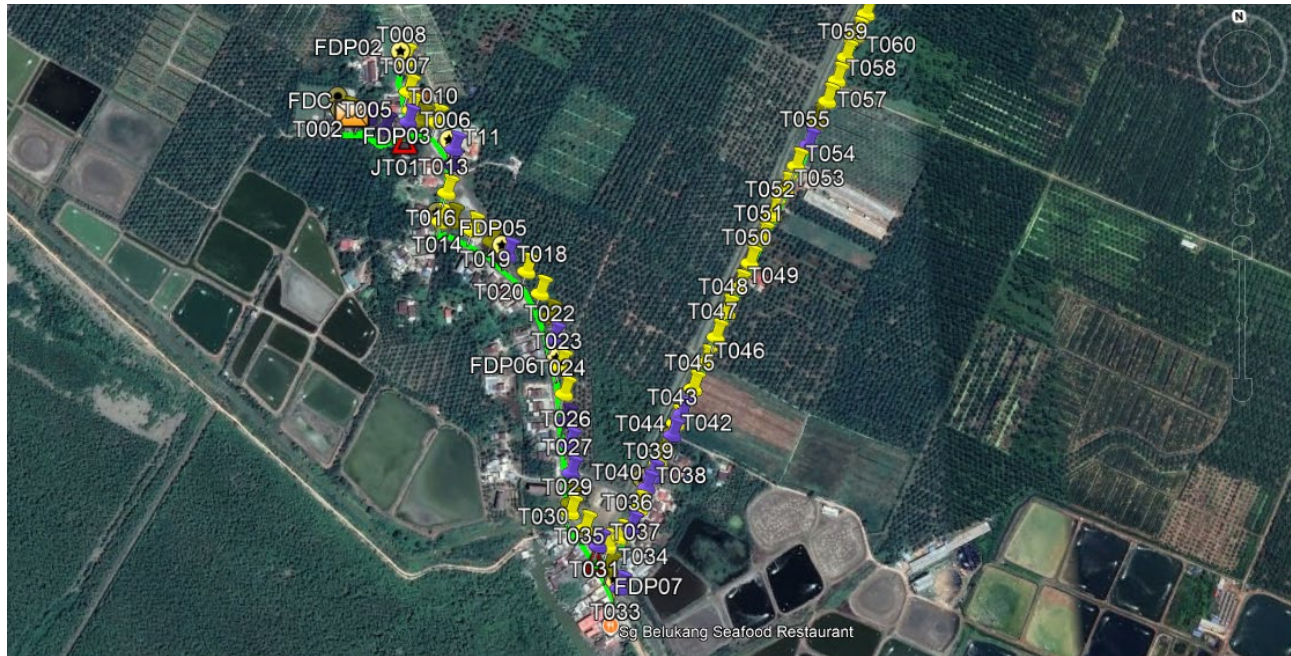
Red Colour – JKR Road

Site Plan - KMZ Routing (All site area)

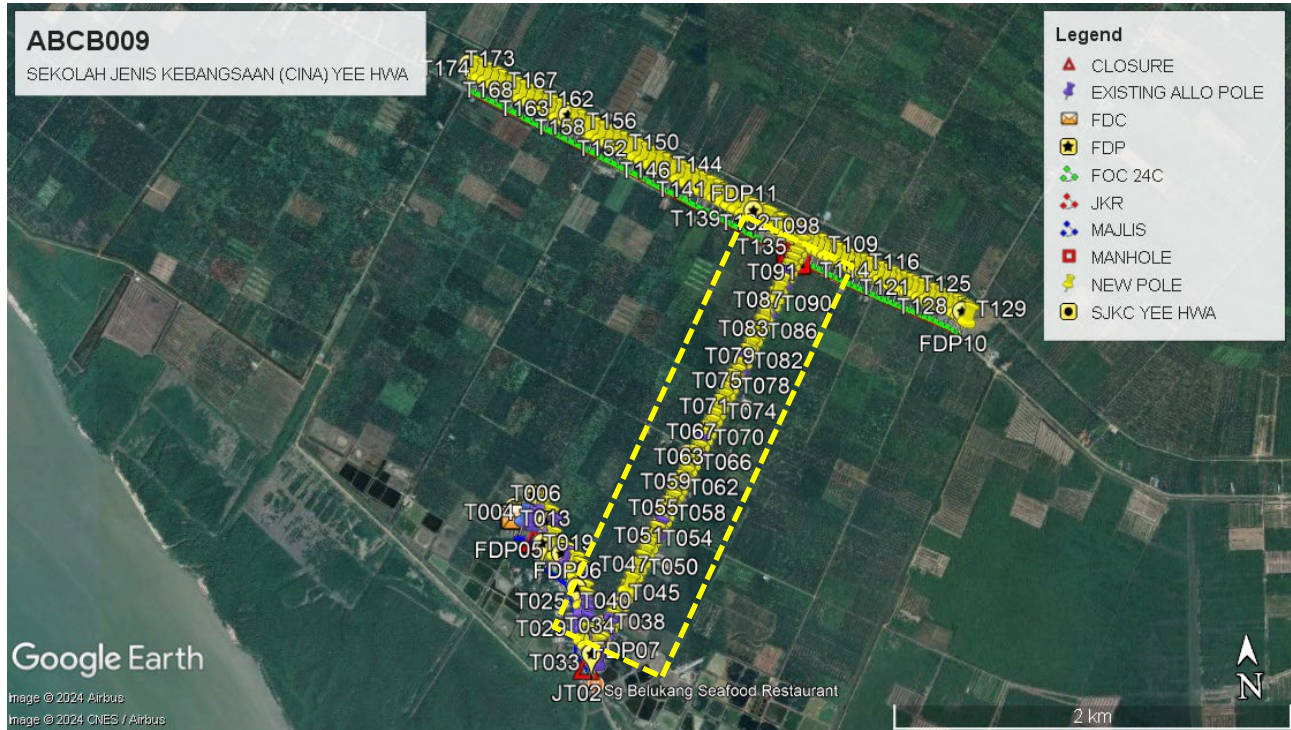
Route 1



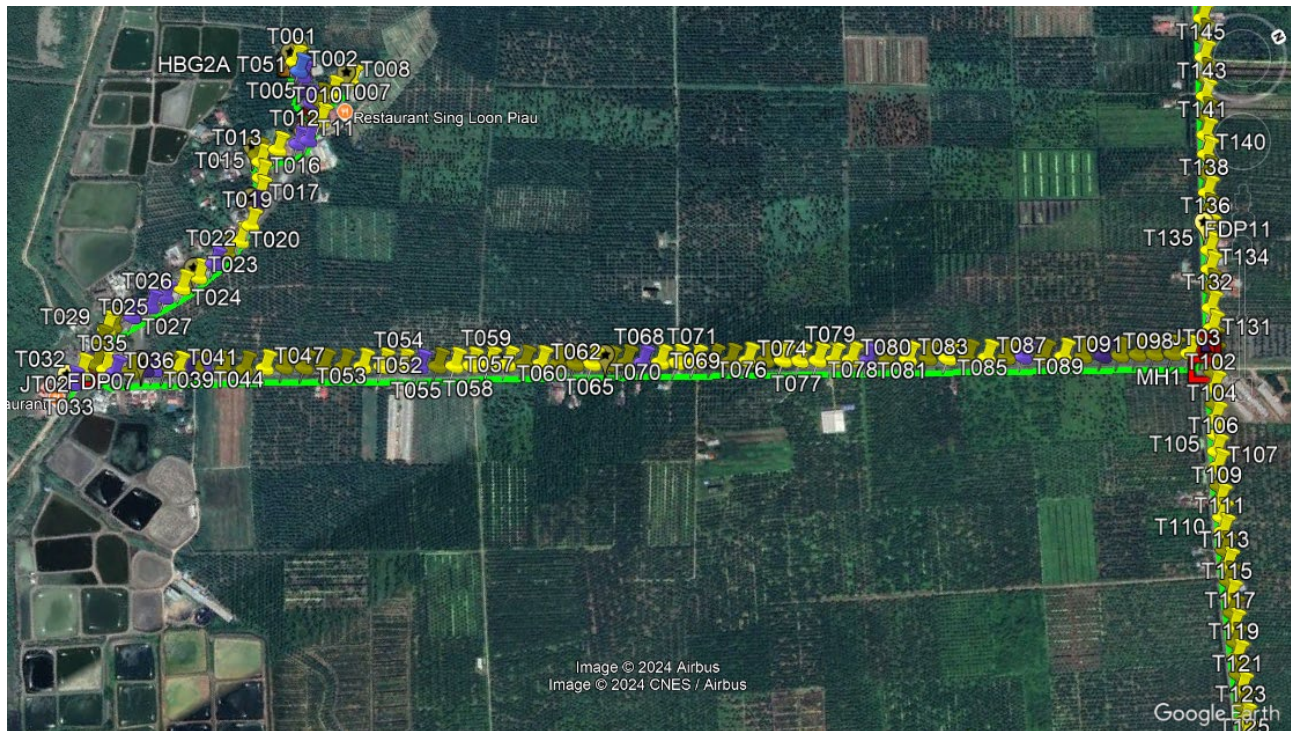
Route 1.1



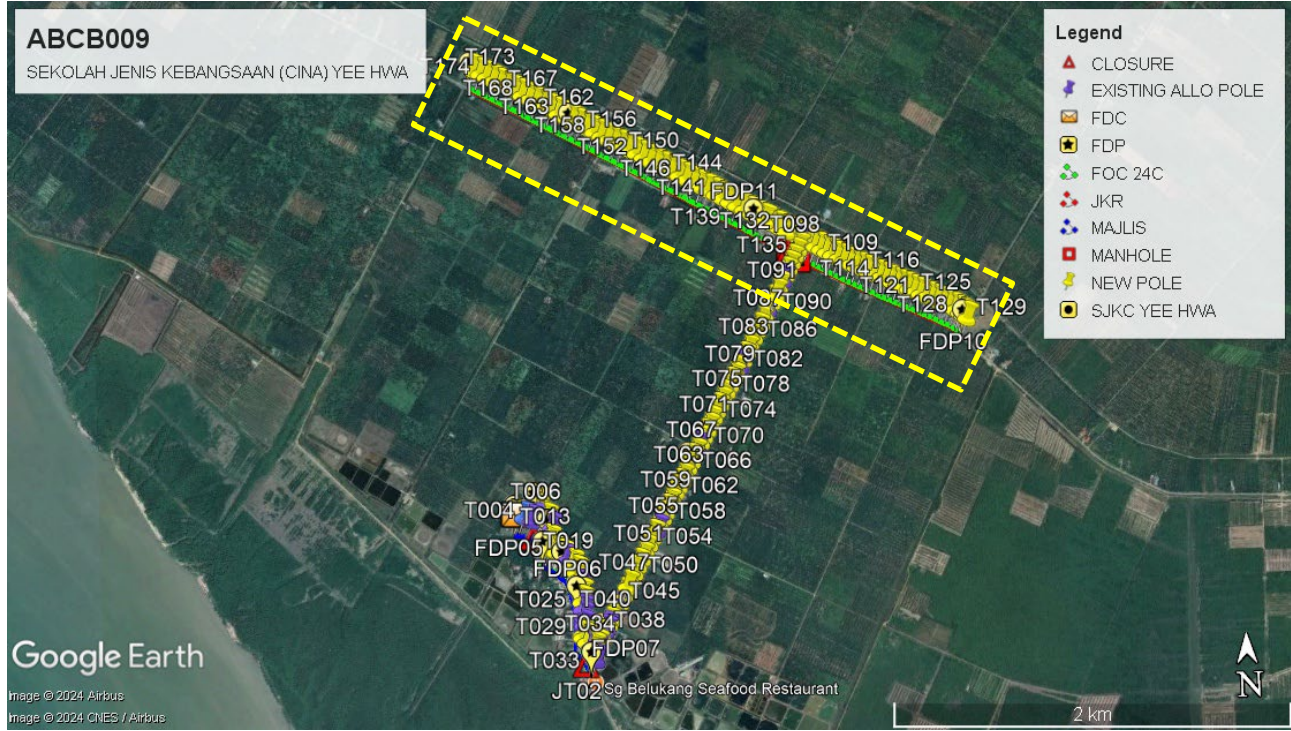
Route 2



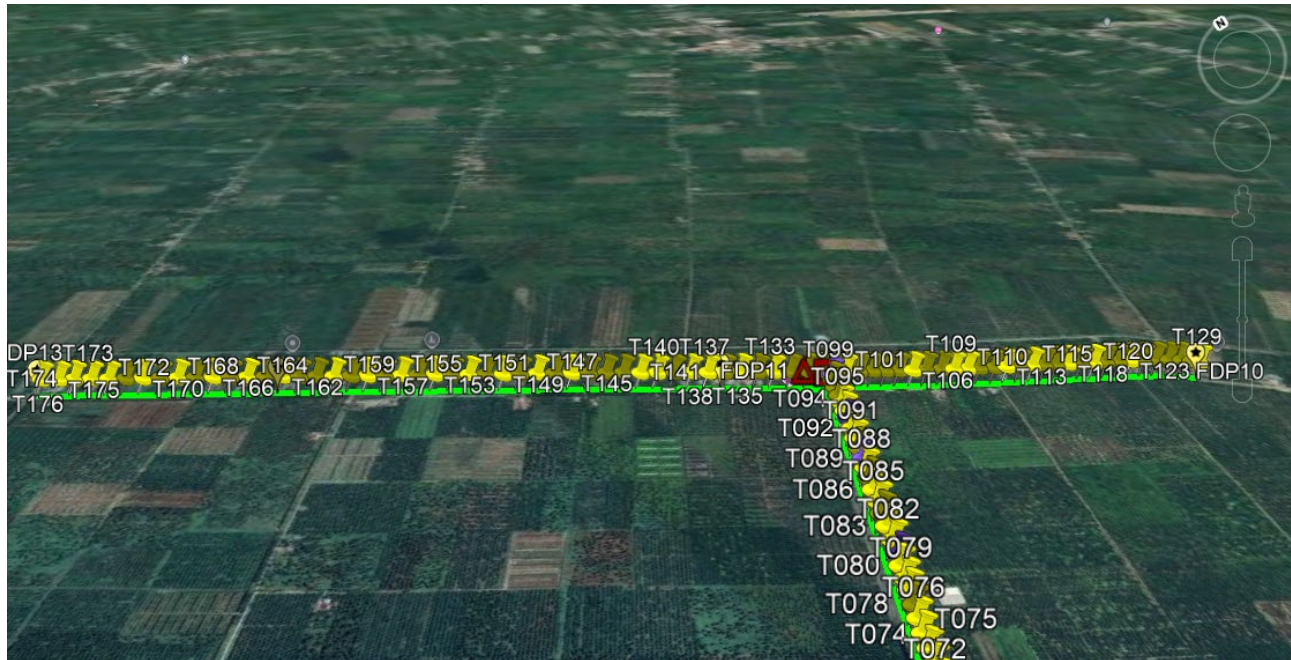
Route 2.1



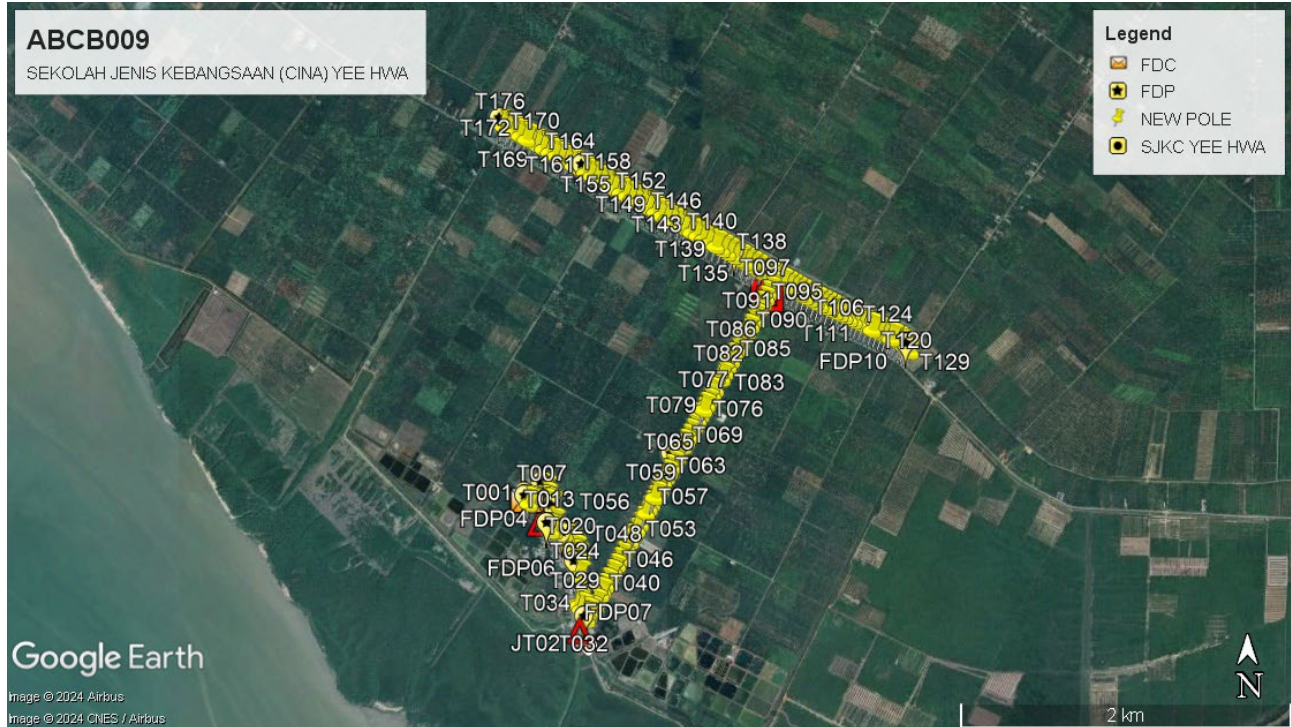
Route 3



Route 3.1



Site Plan - KMZ Routing (Proposed New Pole)



4.0 PROPOSED NEW POLE

Proposed New Pole Coordinate					
No.	Pole Number	Distance (m)	Latitude	Longitude	Local Authority
1	T001	40	3.865648	100.741514	Majlis Perbandaran Teluk Intan
2	T006	40	3.865698	100.742418	Majlis Perbandaran Teluk Intan
3	T007	40	3.865956	100.742399	Majlis Perbandaran Teluk Intan
4	T008	40	3.866384	100.742378	Majlis Perbandaran Teluk Intan
5	T009	40	3.865542	100.742543	Majlis Perbandaran Teluk Intan
6	T010	40	3.865519	100.742747	Majlis Perbandaran Teluk Intan
7	T013	40	3.864549	100.742825	Majlis Perbandaran Teluk Intan
8	T014	40	3.864165	100.742716	Majlis Perbandaran Teluk Intan
9	T015	40	3.864158	100.742867	Majlis Perbandaran Teluk Intan
10	T016	40	3.86401	100.743136	Majlis Perbandaran Teluk Intan
11	T017	40	3.863852	100.743390	Majlis Perbandaran Teluk Intan
12	T019	40	3.863410	100.743831	Majlis Perbandaran Teluk Intan
13	T020	40	3.863101	100.743994	Majlis Perbandaran Teluk Intan
14	T021	40	3.862772	100.744092	Majlis Perbandaran Teluk Intan
15	T023	40	3.862092	100.744196	Majlis Perbandaran Teluk Intan
16	T024	40	3.861730	100.744223	Majlis Perbandaran Teluk Intan
17	T028	40	3.860267	100.744204	Majlis Perbandaran Teluk Intan
18	T029	40	3.860135	100.744197	Majlis Perbandaran Teluk Intan
19	T030	40	3.859908	100.744371	Majlis Perbandaran Teluk Intan
20	T032	40	3.859353	100.744657	Majlis Perbandaran Teluk Intan
21	T034	40	3.859646	100.744674	Majlis Perbandaran Teluk Intan
22	T035	40	3.859760	100.744845	Majlis Perbandaran Teluk Intan
23	T037	40	3.860127	100.745116	Majlis Perbandaran Teluk Intan
24	T040	40	3.860722	100.74542	Majlis Perbandaran Teluk Intan
25	T041	40	3.860925	100.745528	Majlis Perbandaran Teluk Intan
26	T043	40	3.861231	100.745690	Majlis Perbandaran Teluk Intan
27	T045	40	3.861677	100.745959	Majlis Perbandaran Teluk Intan
28	T046	40	3.862006	100.746145	Majlis Perbandaran Teluk Intan
29	T047	40	3.862344	100.746317	Majlis Perbandaran Teluk Intan
30	T048	40	3.862666	100.746485	Majlis Perbandaran Teluk Intan

1.0 PROPOSED NEW POLE

Proposed New Pole Coordinate					
No.	Pole Number	Distance (m)	Latitude	Longitude	Local Authority
31	T049	40	3.862985	100.746674	Majlis Perbandaran Teluk Intan
32	T050	40	3.863308	100.746847	Majlis Perbandaran Teluk Intan
33	T051	40	3.863618	100.747033	Majlis Perbandaran Teluk Intan
34	T052	40	3.863933	100.747210	Majlis Perbandaran Teluk Intan
35	T053	40	3.864258	100.747393	Majlis Perbandaran Teluk Intan
36	T054	40	3.864576	100.747569	Majlis Perbandaran Teluk Intan
37	T056	40	3.865148	100.747902	Majlis Perbandaran Teluk Intan
38	T057	40	3.865424	100.748057	Majlis Perbandaran Teluk Intan
39	T058	40	3.865698	100.748210	Majlis Perbandaran Teluk Intan
40	T059	40	3.866003	100.748354	Majlis Perbandaran Teluk Intan
41	T060	40	3.866293	100.748520	Majlis Perbandaran Teluk Intan
42	T061	40	3.866574	100.748673	Majlis Perbandaran Teluk Intan
43	T062	40	3.866836	100.748839	Majlis Perbandaran Teluk Intan
44	T063	40	3.867111	100.748999	Majlis Perbandaran Teluk Intan
45	T064	40	3.867386	100.749151	Majlis Perbandaran Teluk Intan
46	T065	40	3.867665	100.749310	Majlis Perbandaran Teluk Intan
47	T066	40	3.867942	100.749480	Majlis Perbandaran Teluk Intan
48	T067	40	3.868216	100.749617	Majlis Perbandaran Teluk Intan
49	T069	40	3.868778	100.749927	Majlis Perbandaran Teluk Intan
50	T070	40	3.869047	100.750088	Majlis Perbandaran Teluk Intan
51	T071	40	3.869345	100.750254	Majlis Perbandaran Teluk Intan
52	T072	40	3.869635	100.750406	Majlis Perbandaran Teluk Intan
53	T073	40	3.869915	100.750570	Majlis Perbandaran Teluk Intan
54	T074	40	3.870203	100.750720	Majlis Perbandaran Teluk Intan
55	T075	40	3.870494	100.750878	Majlis Perbandaran Teluk Intan
56	T076	40	3.870779	100.751041	Majlis Perbandaran Teluk Intan
57	T077	40	3.871047	100.751207	Majlis Perbandaran Teluk Intan
58	T078	40	3.871344	100.751369	Majlis Perbandaran Teluk Intan
59	T079	40	3.871591	100.751516	Majlis Perbandaran Teluk Intan
60	T080	40	3.871882	100.751669	Majlis Perbandaran Teluk Intan

1.0 PROPOSED NEW POLE

Proposed New Pole Coordinate					
No.	Pole Number	Distance (m)	Latitude	Longitude	Local Authority
61	T082	40	3.872467	100.752022	Majlis Perbandaran Teluk Intan
62	T083	40	3.872812	100.752194	Majlis Perbandaran Teluk Intan
63	T084	40	3.873140	100.752364	Majlis Perbandaran Teluk Intan
64	T085	40	3.873456	100.752550	Majlis Perbandaran Teluk Intan
65	T086	40	3.873784	100.752725	Majlis Perbandaran Teluk Intan
66	T087	40	3.874095	100.752910	Majlis Perbandaran Teluk Intan
67	T088	40	3.874417	100.753087	Majlis Perbandaran Teluk Intan
68	T090	40	3.875017	100.753434	Majlis Perbandaran Teluk Intan
69	T091	40	3.875342	100.753607	Majlis Perbandaran Teluk Intan
70	T092	40	3.875665	100.753789	Majlis Perbandaran Teluk Intan
71	T094	40	3.876270	100.754120	Majlis Perbandaran Teluk Intan
72	T095	40	3.876561	100.754269	Majlis Perbandaran Teluk Intan
73	T096	40	3.876837	100.754422	Majlis Perbandaran Teluk Intan
74	T097	40	3.877140	100.754583	Majlis Perbandaran Teluk Intan
75	T098	40	3.877407	100.754740	Majlis Perbandaran Teluk Intan
76	T100	40	3.877736	100.755051	JKR
77	T101	40	3.877605	100.755253	JKR
78	T102	40	3.877466	100.755518	JKR
79	T103	40	3.877327	100.755775	JKR
80	T104	40	3.877182	100.756023	JKR
81	T105	40	3.8770460	100.756276	JKR
82	T106	40	3.876887	100.756548	JKR
83	T107	40	3.876754	100.756808	JKR
84	T108	40	3.876597	100.757110	JKR
85	T109	40	3.876461	100.757364	JKR
86	T110	40	3.876333	100.757632	JKR
87	T111	40	3.876216	100.757874	JKR
88	T112	40	3.876067	100.758181	JKR
89	T113	40	3.875955	100.758444	JKR
90	T114	40	3.875831	100.758694	JKR

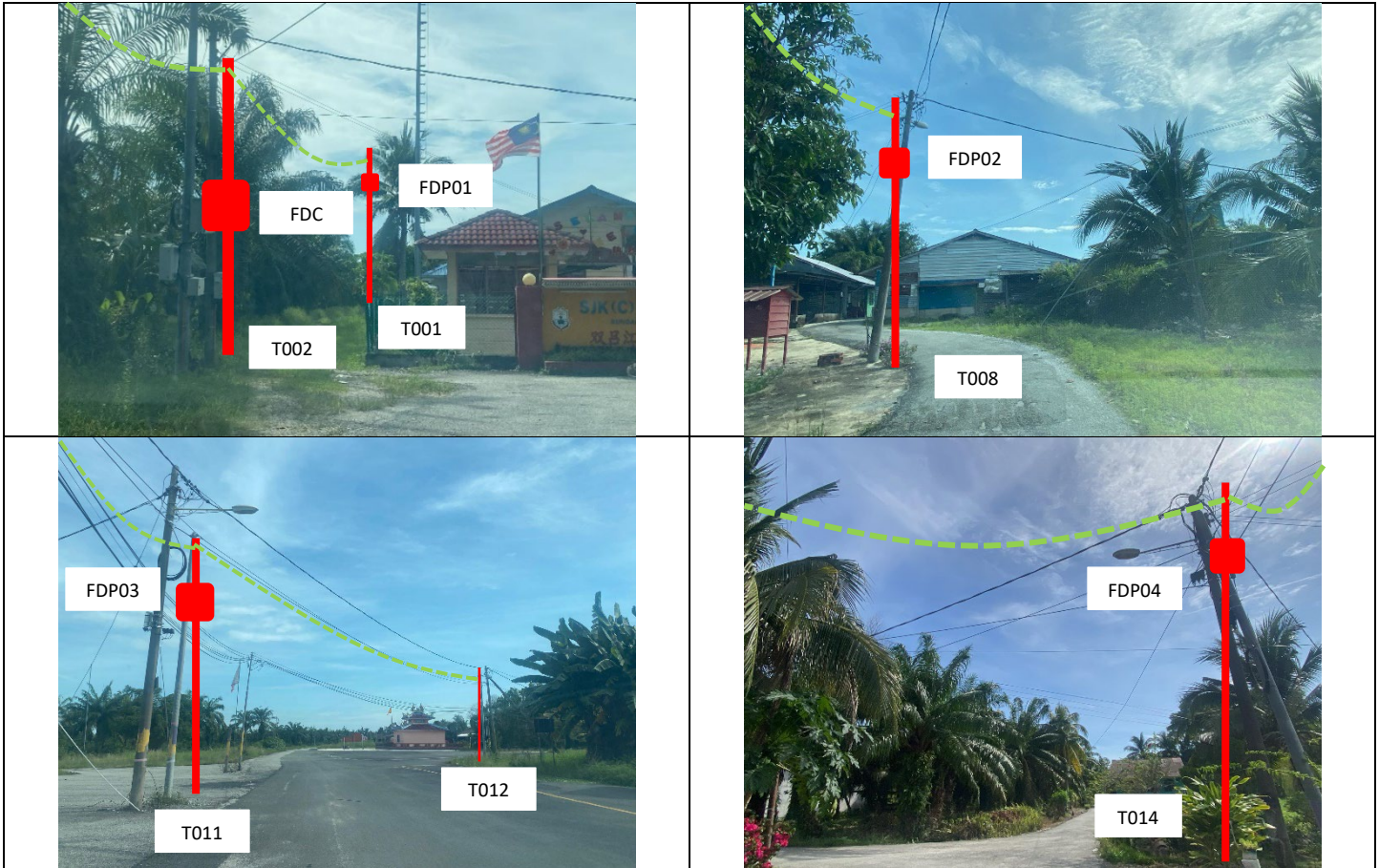
1.0 PROPOSED NEW POLE

Proposed New Pole Coordinate					
No.	Pole Number	Distance (m)	Latitude	Longitude	Local Authority
91	T115	40	3.875701	100.758966	JKR
92	T116	40	3.875586	100.759223	JKR
93	T117	40	3.875470	100.759454	JKR
94	T118	40	3.875358	100.759714	JKR
95	T119	40	3.875227	100.759967	JKR
96	T120	40	3.875100	100.760233	JKR
97	T121	40	3.874987	100.760500	JKR
98	T122	40	3.874861	100.760759	JKR
99	T123	40	3.874744	100.761003	JKR
100	T124	40	3.874618	100.761272	JKR
101	T125	40	3.874489	100.761536	JKR
102	T126	40	3.874337	100.761783	JKR
103	T127	40	3.874187	100.762007	JKR
104	T128	40	3.874048	100.762163	JKR
105	T129	40	3.873928	100.762302	JKR
106	T130	40	3.877870	100.754805	JKR
107	T131	40	3.878020	100.754549	JKR
108	T132	40	3.878198	100.754211	JKR
109	T133	40	3.878390	100.753884	JKR
110	T134	40	3.878564	100.753582	JKR
111	T135	40	3.878747	100.753267	JKR
112	T136	40	3.878923	100.752956	JKR
113	T137	40	3.879095	100.752638	JKR
114	T138	40	3.879282	100.752322	JKR
115	T139	40	3.879467	100.752006	JKR
116	T140	40	3.879651	100.751689	JKR
117	T141	40	3.879832	100.751366	JKR
118	T142	40	3.880027	100.751047	JKR
119	T143	40	3.880211	100.750727	JKR
120	T144	40	3.880399	100.750402	JKR

1.0 PROPOSED NEW POLE

Proposed New Pole Coordinate					
No.	Pole Number	Distance (m)	Latitude	Longitude	Local Authority
121	T145	40	3.880583	100.750075	JKR
122	T146	40	3.880773	100.749746	JKR
123	T147	40	3.880950	100.749419	JKR
124	T148	40	3.881125	100.749091	JKR
125	T149	40	3.881300	100.748770	JKR
126	T150	40	3.881499	100.748446	JKR
127	T151	40	3.881667	100.748131	JKR
128	T152	40	3.881857	100.747811	JKR
129	T153	40	3.882039	100.747483	JKR
130	T154	40	3.882218	100.747166	JKR
131	T155	40	3.882384	100.746854	JKR
132	T156	40	3.882560	100.746536	JKR
133	T157	40	3.882736	100.746219	JKR
134	T158	40	3.882911	100.745906	JKR
135	T159	40	3.883093	100.745586	JKR
136	T160	40	3.883285	100.745262	JKR
137	T161	40	3.883460	100.744942	JKR
138	T162	40	3.883645	100.744618	JKR
139	T163	40	3.883836	100.744298	JKR
140	T164	40	3.884015	100.743969	JKR
141	T165	40	3.884200	100.743646	JKR
142	T166	40	3.884380	100.743324	JKR
143	T167	40	3.884567	100.742992	JKR
144	T168	40	3.884749	100.742670	JKR
145	T169	40	3.884930	100.742340	JKR
146	T170	40	3.885107	100.742014	JKR
147	T171	40	3.885285	100.741693	JKR
148	T172	40	3.885457	100.741375	JKR
149	T173	40	3.885649	100.741055	JKR
150	T174	40	3.885830	100.740733	JKR
151	T175	40	3.885986	100.740445	JKR
152	T176	40	3.886166	100.740126	JKR

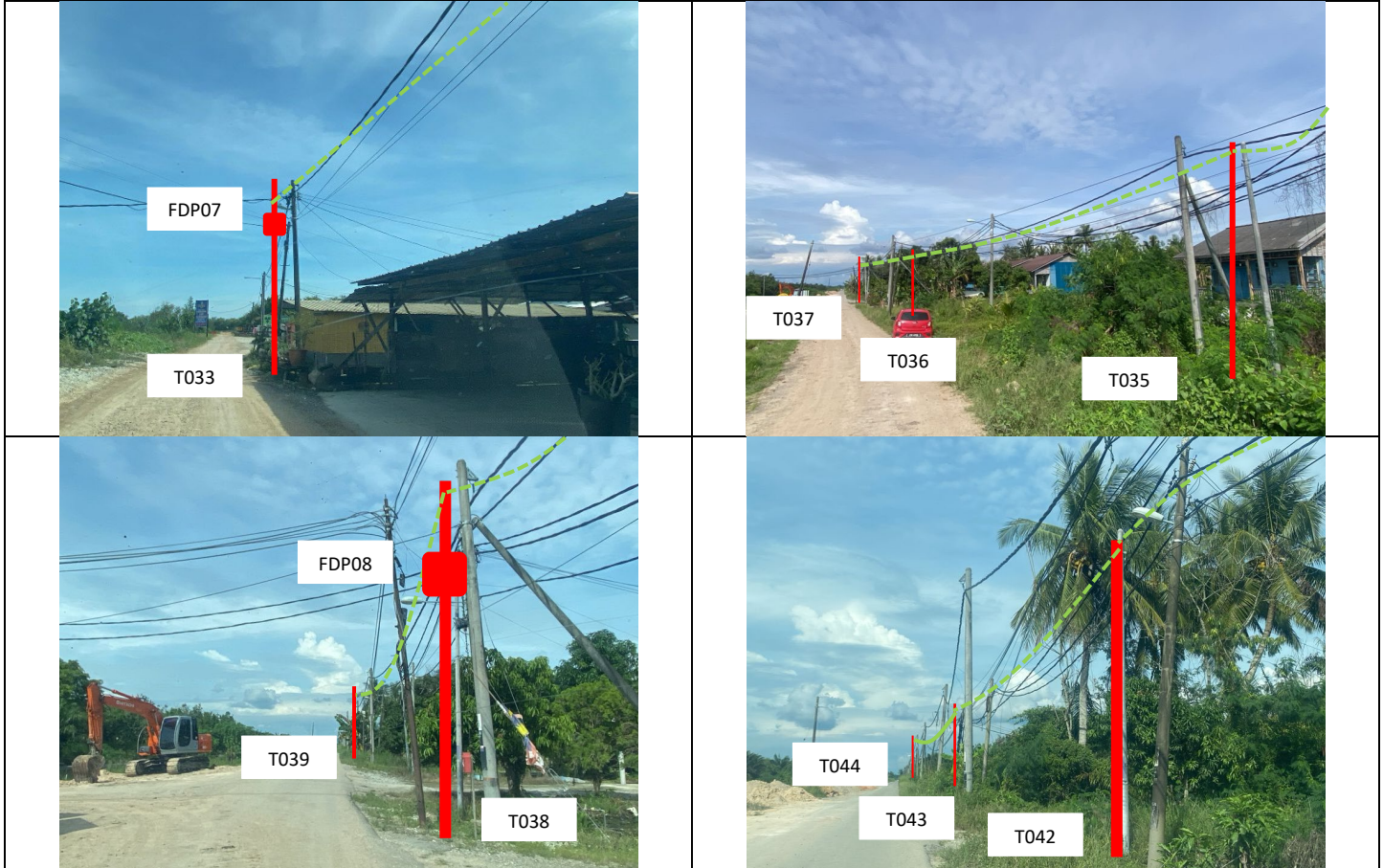
1.0 SITE PHOTOS - PROPOSED NEW POLE



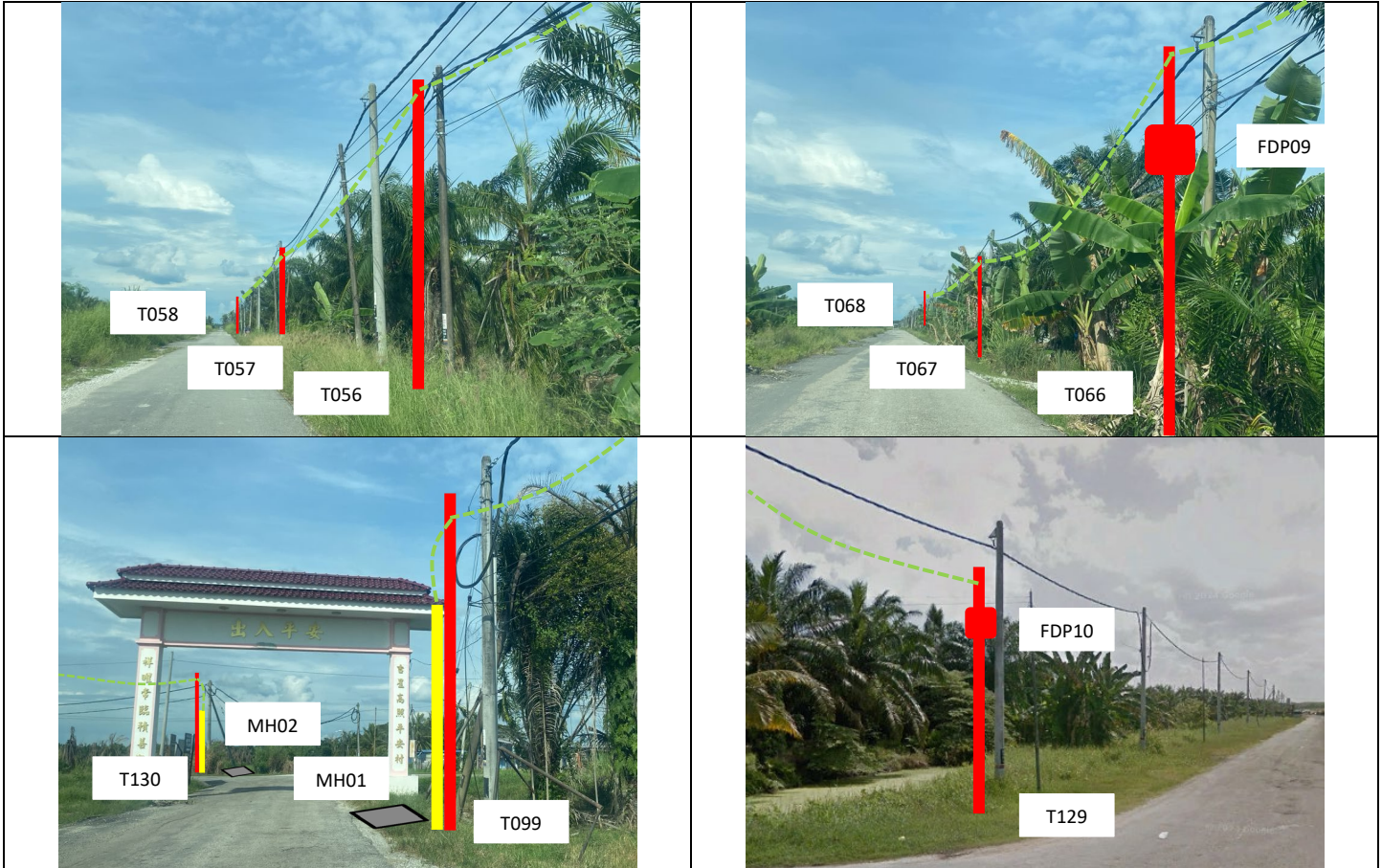
1.0 SITE PHOTOS - PROPOSED NEW POLE



1.0 SITE PHOTOS - PROPOSED NEW POLE



1.0 SITE PHOTOS - PROPOSED NEW POLE



1.0 SITE PHOTOS - PROPOSED NEW POLE



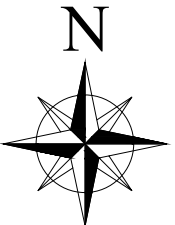


SUPPLY, INSTALLATION AND COMMISSIONING OF FTTX NETWORK INFRASTRUCTURE FOR ALLO TECHNOLOGY SDN BHD POP 2 PROJECT (D-SIDE) - PMU BSRI FOR ABC3056 SEKOLAH KEBANGSAAN JENIS (CINA) ALOR PONGSU



2.0 3rd PARTIES DEPENDENCIES

NO	LOCAL COUNCIL / AUTHORITY	REMARK
1	Majlis Perbandaran Teluk Intan	3,920m
2	JKR Road	3,080m



TO PAGE 2



LEGEND

	12C FOC		Installed 1:4 splitter in FDC		INSTALLED POLE (9M)		NEW MANHOLE		TENSION SMALL / TENSION BIG		MH NO.
	24C FOC		FDP		INSTALLED RISER		HOUSE NUMBER		EXISTING MANHOLE		EXISTING TNB POLE NO.
	48C FOC		CLOSURE		SUSPENSION BIG		EXISTING ALLO POLE		CLOSURE NO.		NEW POLE NO.
	90C FOC		NEW MANHOLE (PT)		SUSPENSION SMALL		LOOP		FDP NO.		SEE A.A. IN 2ND SHEET
	144C FOC		INSTALLED POLE		FDC		LOOP BOUNDARY		FDC NO.		SEE SHEET 1014

KEY PLAN

KEPERHENTIAN KOMUNIKASI DAN DIGITAL

PROJECT OWNER

APEX COMMUNICATIONS SDN BHD

PRIVASAT

MAIN CONTRACTOR

KNZ Engineering

SUB-CONTRACTOR

KNZ ENGINEERING SDN BHD
 NO. 60 & 60A, Jalan Klebang Indah 1,
 Medan Klebang Indah,
 30100 Ipoh, Perak
 No Tel: 019-3695071
 Email: admin@knzengineering.com.my
 Website: www.knzengineering.com.my

PROJECT TITLE

SEKOLAH JENIS KEBANGSAAN
 (CINA)
 YEE HWA

DRAWING TITLE

TP DRAWING POP 2 AT
 SEKOLAH JENIS KEBANGSAAN
 (CINA) YEE HWA

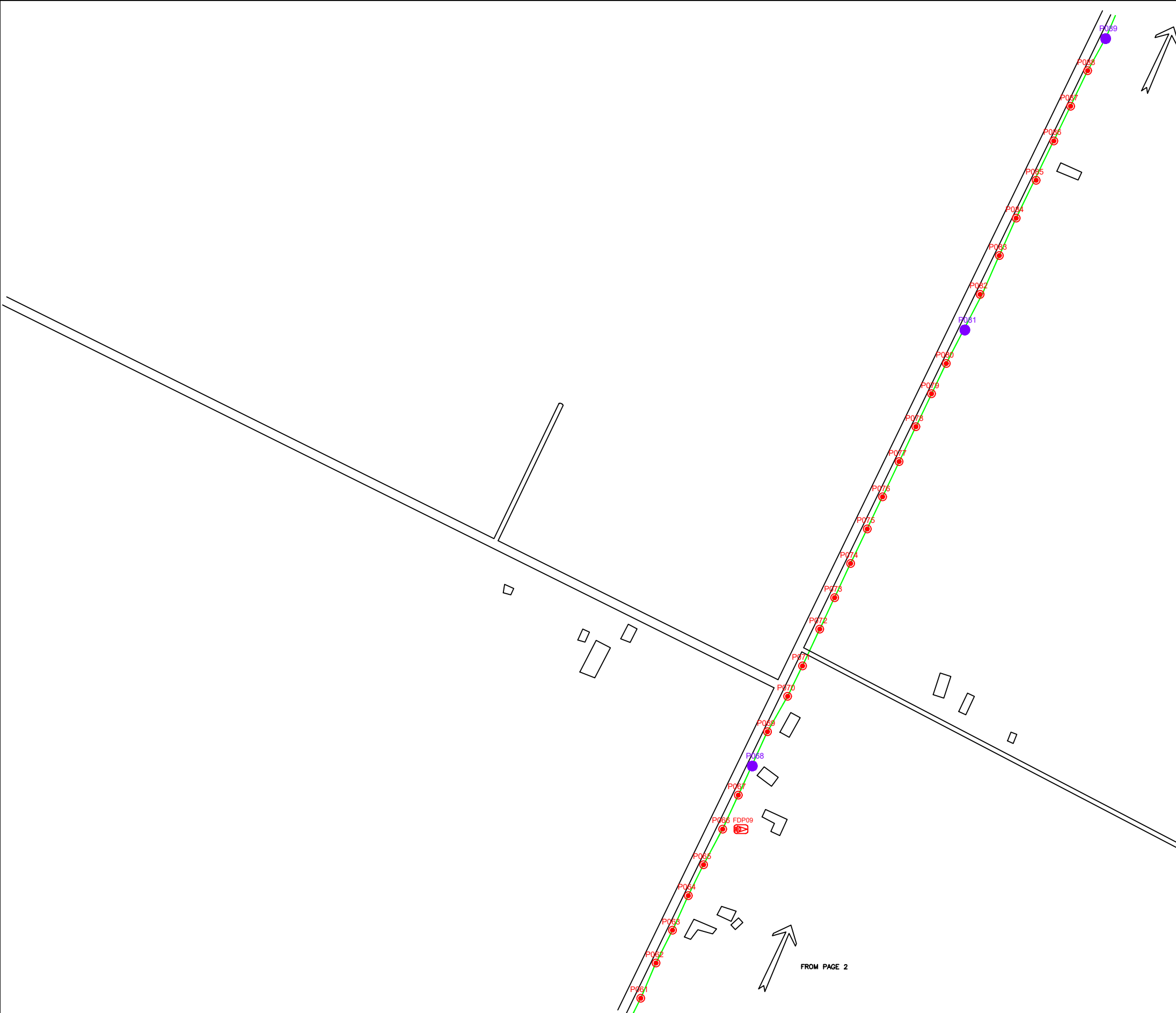
PROJECT PHASE

PROJECT PHASE 2

DESIGN BY	NABIL	DATE	19/12/2024
DRAWN BY	NABIL	SCALE	NOT TO SCALE
CHECKED BY	AZHAN HARIS	JOB NUMBER	ABCB009
DRAWING NUMBER		ABCB009	
THIS PRINT AND ITS COPYRIGHT ARE THE PROPERTY OF KNZ ENGINEERING SDN. BHD.		1/4	
		A3	



TO PAGE 3



FROM PAGE 2

LEGEND

	12C FOC		Installed 1:4 splitter in FDC		INSTALLED POLE (9M)		NEW MANHOLE		TENSION SMALL / TENSION BIG		MH NO.
	24C FOC		FDP		INSTALLED RISER		HOUSE NUMBER		EXISTING MANHOLE		EXISTING TNB POLE NO.
	48C FOC		CLOSURE		SUSPENSION BIG		EXISTING ALLO POLE		CLOSURE NO.		NEW POLE NO.
	90C FOC		NEW MANHOLE (PT)		SUSPENSION SMALL		LOOP		FDP NO.		SEE A.A TO B.B
	144C FOC		INSTALLED POLE		FDC		FDP BOUNDARY		FDC NO.		SEE SHEET XXX

KEY PLAN

PROJECT OWNER



MAIN CONTRACTOR



SUB-CONTRACTOR

KNZ Engineering
 KNZ ENGINEERING SDN BHD
 NO. 60 & 60A, Jalan Klebang Indah 1, Medan Klebang Indah, 30100 Ipoh, Perak
 No Tel: 019-3695071
 Email: admin@knzengineering.com.my
 Website: www.knzengineering.com.my

PROJECT TITLE

SEKOLAH JENIS KEBANGSAAN (CINA) YEE HWA

DRAWING TITLE

TP DRAWING POP 2 AT SEKOLAH JENIS KEBANGSAAN (CINA) YEE HWA

PROJECT PHASE

PROJECT PHASE 2

DESIGN BY NABIL DATE 19/12/2024

DRAWN BY NABIL SCALE NOT TO SCALE

CHECKED BY AZHAN HARIS JOB NUMBER ABCB009

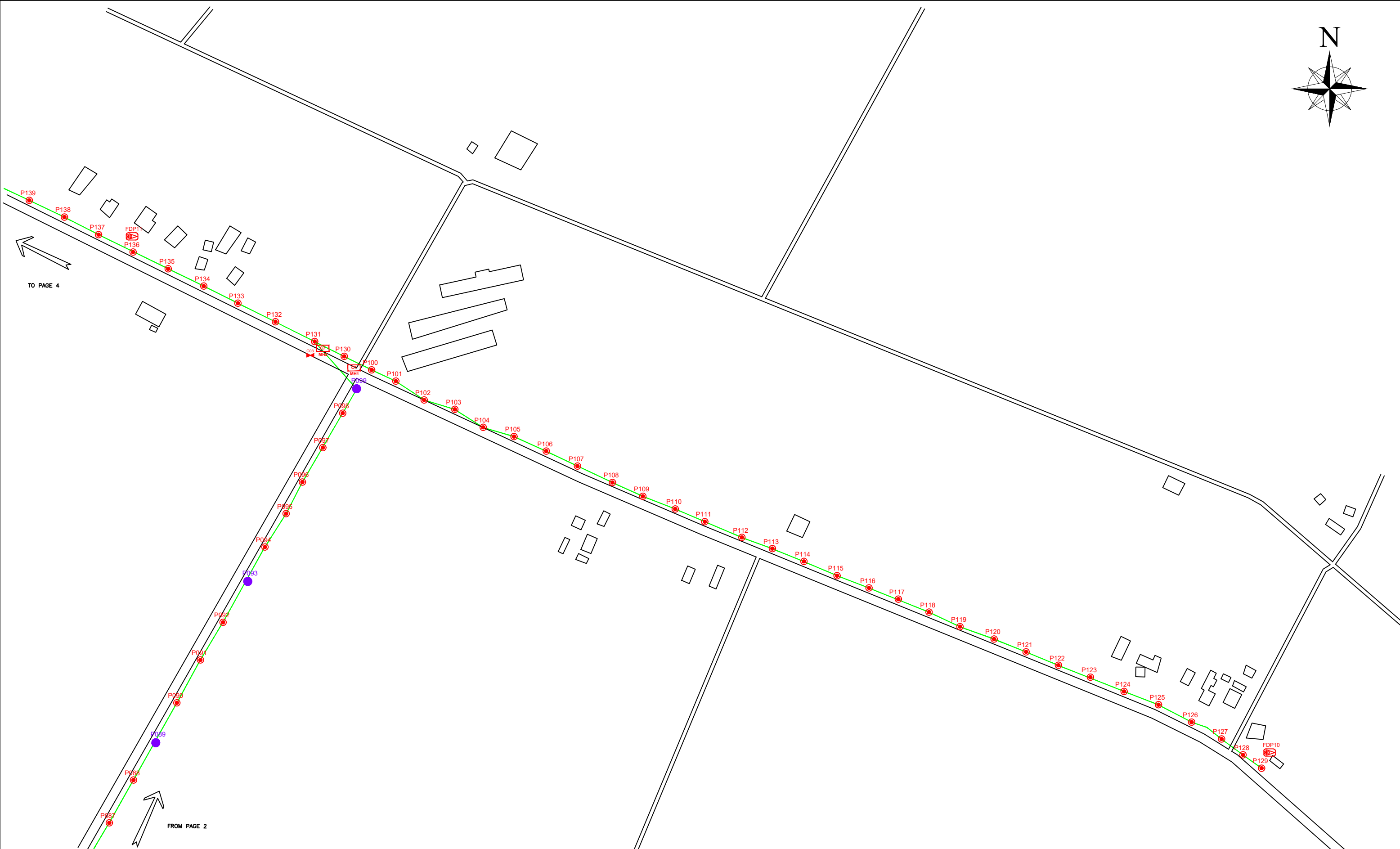
DRAWING NUMBER

ABCB009

2/4

THIS PRINT AND ITS COPYRIGHT ARE THE PROPERTY OF KNZ ENGINEERING SDN. BHD.

A3



LEGEND

	12C FOC		Installed 1:4 splitter in FDC		INSTALLED POLE (9M)		NEW MANHOLE		TS / TB TENSION SMALL / TENSION BIG		MH NO.
	24C FOC		FDP		INSTALLED RISER		EXISTING MANHOLE		CLOSURE NO.		EXISTING TNB POLE NO.
	48C FOC		CLOSURE		SUSPENSION BIG		EXISTING ALLO POLE		FDP NO.		NEW POLE NO.
	90C FOC		NEW MANHOLE (PT)		SUSPENSION SMALL		LOOP		FDC NO.		SEE SHEET XXX
	144C FOC		INSTALLED POLE		FDC		FDP BOUNDARY				SEE SHEET XXX

KEY PLAN

PROJECT OWNER

MAIN CONTRACTOR

SUB-CONTRACTOR

KNZ ENGINEERING SDN BHD
 NO. 60 & 60A, Jalan Klebang Indah 1, Medan Klebang Indah, 30100 Ipoh, Perak
 No Tel: 019-3695071
 Email: admin@knzengineering.com.my
 Website: www.knzengineering.com.my

PROJECT TITLE

SEKOLAH JENIS KEBANGSAAN (CINA) YEE HWA

DRAWING TITLE

TP DRAWING POP 2 AT SEKOLAH JENIS KEBANGSAAN (CINA) YEE HWA

PROJECT PHASE

PROJECT PHASE 2

DESIGN BY	NABIL	DATE	19/12/2024
DRAWN BY	NABIL	SCALE	NOT TO SCALE
CHECKED BY	AZHAN HARIS	JOB NUMBER	ABCB009
DRAWING NUMBER		ABCB009	
THIS PRINT AND ITS COPYRIGHT ARE THE PROPERTY OF KNZ ENGINEERING SDN. BHD.		3/4	
		A3	



FROM PAGE 3

LEGEND

	12C FOC		Installed 1:4 splitter in FDC		INSTALLED POLE (9M)		NEW MANHOLE		TENSION SMALL / TENSION BIG		MH NO.
	24C FOC		FDP		INSTALLED RISER		HOUSE NUMBER		EXISTING MANHOLE		EXISTING TNB POLE NO.
	48C FOC		CLOSURE		SUSPENSION BIG		EXISTING ALLO POLE		CLOSURE NO.		NEW POLE NO.
	90C FOC		NEW MANHOLE (PT)		SUSPENSION SMALL		LOOP		FDP NO.		SEE SHEET XXX
	144C FOC		INSTALLED POLE		FDC		FDP BOUNDARY		FDC NO.		SEE SHEET XXX

KEY PLAN

PROJECT OWNER

MAIN CONTRACTOR

SUB-CONTRACTOR

KNZ ENGINEERING SDN BHD
 NO. 60 & 60A, Jalan Klebang Indah 1, Medan Klebang Indah, 30100 Ipoh, Perak
 No Tel: 019-3695071
 Email: admin@knzengineering.com.my
 Website: www.knzengineering.com.my

PROJECT TITLE

SEKOLAH JENIS KEBANGSAAN (CINA) YEE HWA

DRAWING TITLE

TP DRAWING POP 2 AT SEKOLAH JENIS KEBANGSAAN (CINA) YEE HWA

PROJECT PHASE

PROJECT PHASE 2

DESIGN BY	NABIL	DATE	19/12/2024
DRAWN BY	NABIL	SCALE	NOT TO SCALE
CHECKED BY	AZHAN HARIS	JOB NUMBER	ABCB009
DRAWING NUMBER		ABCB009	
THIS PRINT AND ITS COPYRIGHT ARE THE PROPERTY OF KNZ ENGINEERING SDN. BHD.		4/4	
		A3	