

TECHNICAL PROPOSAL

POP2 ABD7047 SEKOLAH JENIS KEBANGSAAN (TAMIL) PENGKALAN HULU (D-SIDE)

Company Name : WabTech Sdn Bhd
Company Address : 101-1, Jalan Metro Sendayan, 71950, Seremban, Negeri Sembilan.
Prepared By : Mohd Farid bin Othman
Date : 19/02/2025



Starting Point

Site / Boundary Name : Sekolah Jenis Kebangsaan (Tamil) Pengkalan Hulu
Address : Jalan Tufail, 33100, Pengkalan Hulu, Perak.
District : Pengkalan Hulu
Postcode : 33100
State : Perak
GPS Coordinate : 5.705561, 101.000576
LRD : A

End Point

Site / Boundary Name : Taman Sri Jaya, Pengkalan Hulu
Address : Jalan Sri Jaya, Taman Sri Jaya, 33100, Pengkalan Hulu, Perak.
District : Pengkalan Hulu
Postcode : 33100
State : Perak
GPS Coordinate : 5.709850, 101.003458
LRD : B



PROJEK PENYEDIAAN DAN PENYELENGGARAAN POINT OF PRESENCE (POP)
FASA 2: HAB INFRASTRUTUK GENTIAN OPTIK BERHAMPIRAN DENGAN
SEKOLAH, KAWASAN PERINDUSTRIAN, PREMIS KERAJAAN DAN KOMUNITI
SEKITARNYA OLEH KEMENTERIAN KOMUNIKASI MALAYSIA – ZON UTARA
(KKMM.400-11/17/132(1))



WABTECH SDN BHD
(1398887-X)

1.0 WORK SUMMARY

NO	PROPOSED DISTANCE AND METHOD	UNIT	QUANTITY
1	Horizontal Directional Drilling (HDD)	m	0
2	Carriage Way Open Trench (CW)	m	0
3	Grass Verge Open Trenching (GV)	m	0
4	Micro Trenching (MT)	m	0
Total			

NO	OTHER INFORMATION	UNIT	QUANTITY
1	Installation of Short Span ADSS Fibre Cables	m	1808m
2	Install New Pole	ea	47
3	Install New JRC7 Manhole	ea	0
4	Install GI Riser 100mm	ea	0
5	Install Fiber Distribution Point and Closure (Splicing, Termination and Testing)	ea	16
6	Estimated Time Required for Completion	days	30



PROJEK PENYEDIAAN DAN PENYELENGGARAAN POINT OF PRESENCE (POP)
FASA 2: HAB INFRASTRUTUK GENTIAN OPTIK BERHAMPIRAN DENGAN
SEKOLAH, KAWASAN PERINDUSTRIAN, PREMIS KERAJAAN DAN KOMUNITI
SEKITARNYA OLEH KEMENTERIAN KOMUNIKASI MALAYSIA – ZON UTARA
(KKMM.400-11/17/132(1))



WABTECH SDN BHD
(1398887-X)

2.0 LOCAL AUTHORITY SUMMARY

Daerah Pengkalan Hulu

NO	ITEMS	Owner	Quantity	Distance (m)
1	HDD	JKR	-	-
		Majlis	-	-
		PDT	-	-
2	New Pole	JKR	3	60
		Majlis	44	1333
		PDT	-	-
Total Distance (m)				1393

3.0 SITE PLAN (KMZ)

3.1 Overview Site Area



3.2 Site boundry



3.3 Road Boundry



4.0 PROPOSED NEW POLE

Proposed New Pole Coordinate					
No.	Pole Number	Distance (m)	Latitude	Longitude	Local Authority
1	FDC POLE	10	5.705455	101.000597	Majlis Daerah Pengkalan Hulu
2	T001	12	5.705455	101.000597	Majlis Daerah Pengkalan Hulu
3	T002	31	5.705560	101.000576	Majlis Daerah Pengkalan Hulu
4	T003	35	5.705844	101.000562	Majlis Daerah Pengkalan Hulu
5	T004	36	5.705894	101.000871	Majlis Daerah Pengkalan Hulu
6	T005	19	5.705961	101.001185	Majlis Daerah Pengkalan Hulu
7	T006	24	5.706002	101.001348	Majlis Daerah Pengkalan Hulu
8	T007	19	5.706216	101.001316	Majlis Daerah Pengkalan Hulu
9	T008	24	5.706369	101.001384	Majlis Daerah Pengkalan Hulu
10	T009	32	5.706387	101.001595	Majlis Daerah Pengkalan Hulu
11	T010	32	5.706664	101.001678	Majlis Daerah Pengkalan Hulu
12	T011	36	5.706939	101.001753	Majlis Daerah Pengkalan Hulu
13	T012	30	5.707256	101.001831	Majlis Daerah Pengkalan Hulu
14	T013	26	5.707519	101.001910	Majlis Daerah Pengkalan Hulu
15	T014	21	5.707740	101.001982	Majlis Daerah Pengkalan Hulu
16	T015	28	5.707684	101.002158	Majlis Daerah Pengkalan Hulu
17	T016	33	5.707643	101.002409	Majlis Daerah Pengkalan Hulu
18	T017	37	5.707556	101.002691	Majlis Daerah Pengkalan Hulu
19	T018	30	5.707480	101.003017	Majlis Daerah Pengkalan Hulu
20	T019	21	5.707741	101.003100	Majlis Daerah Pengkalan Hulu
21	T020	36	5.707718	101.003291	Majlis Daerah Pengkalan Hulu
22	T021	25	5.708004	101.003455	Majlis Daerah Pengkalan Hulu
23	T022	35	5.708034	101.003228	Majlis Daerah Pengkalan Hulu
24	T023	36	5.708110	101.002924	Majlis Daerah Pengkalan Hulu
25	T024	32	5.708194	101.002610	Majlis Daerah Pengkalan Hulu
26	T025	18	5.708272	101.002330	Majlis Daerah Pengkalan Hulu
27	T026	30	5.708307	101.002167	Majlis Daerah Pengkalan Hulu
28	T027	21	5.708573	101.002234	Majlis Daerah Pengkalan Hulu
29	T028	30	5.708757	101.002286	Majlis Daerah Pengkalan Hulu
30	T029	31	5.708676	101.002542	Majlis Daerah Pengkalan Hulu
31	T030	31	5.708610	101.002814	Majlis Daerah Pengkalan Hulu
32	T031	25	5.708287	101.003481	Majlis Daerah Pengkalan Hulu
33	T032	30	5.708512	101.003507	Majlis Daerah Pengkalan Hulu
34	T033	31	5.708771	101.003568	Majlis Daerah Pengkalan Hulu
35	T034	31	5.709039	101.003641	Majlis Daerah Pengkalan Hulu
36	T035	35	5.709313	101.003705	Majlis Daerah Pengkalan Hulu
37	T036	26	5.709101	101.003329	Majlis Daerah Pengkalan Hulu
38	T037	26	5.709166	101.003102	Majlis Daerah Pengkalan Hulu
39	T038	25	5.709216	101.002878	Majlis Daerah Pengkalan Hulu



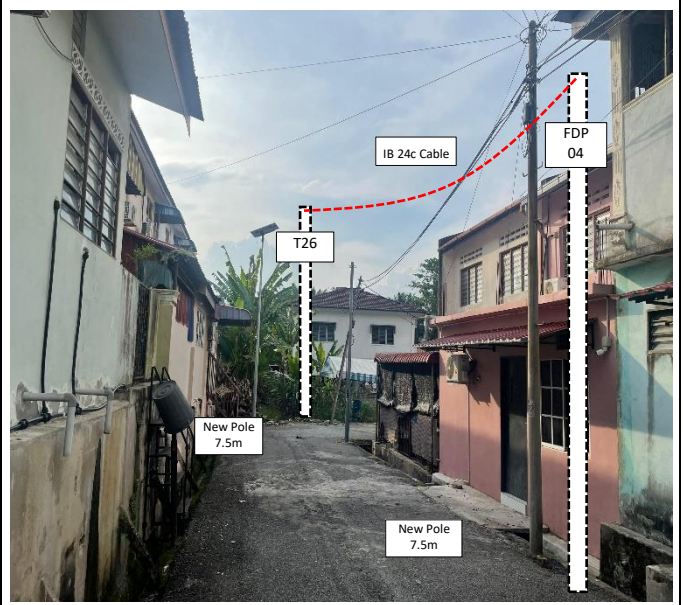
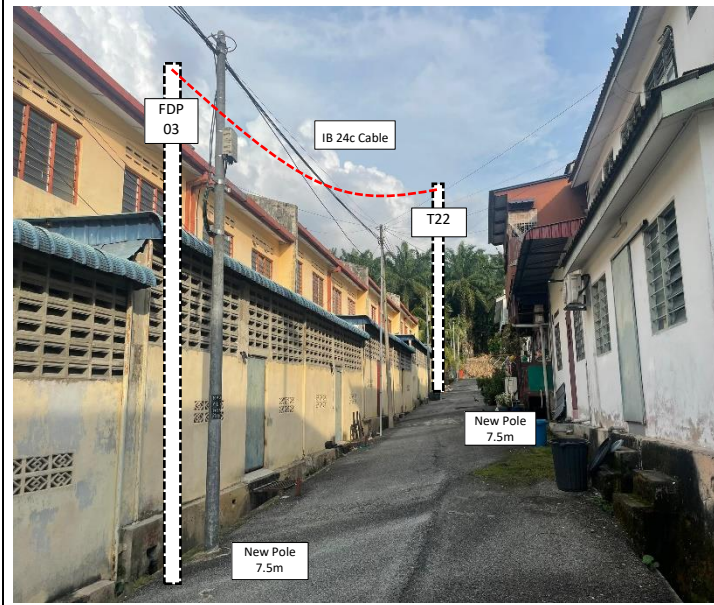
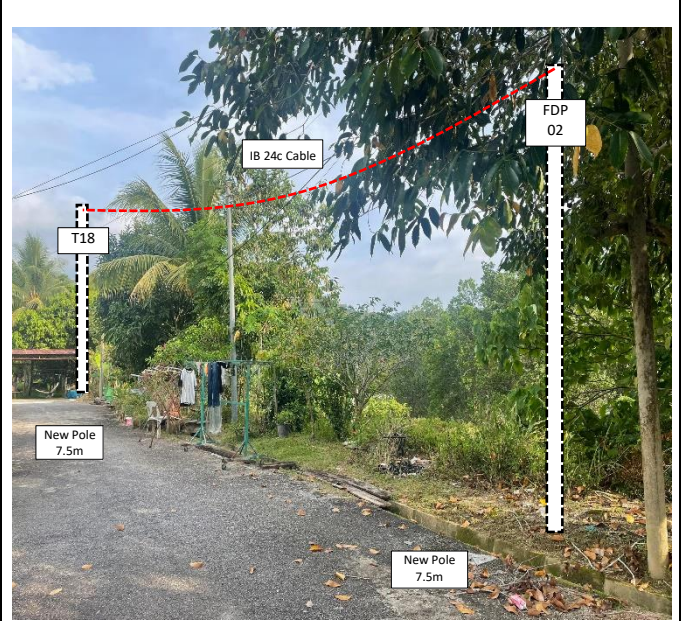
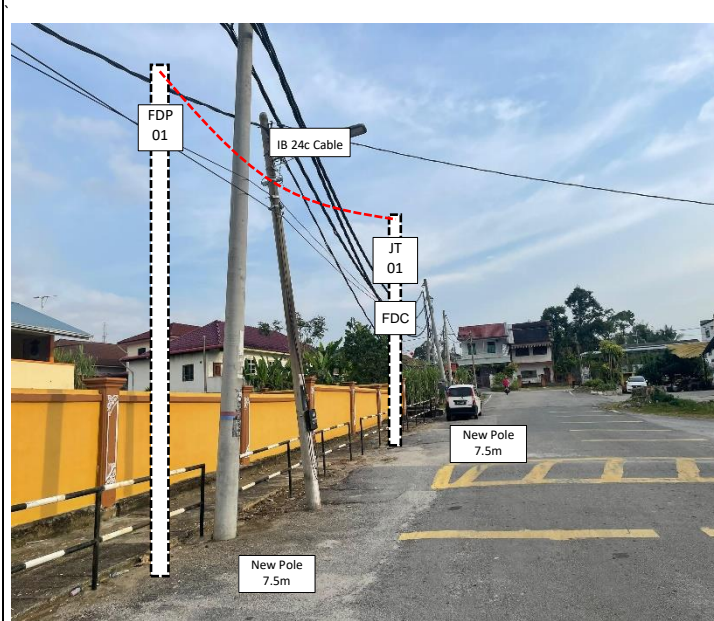
PROJEK PENYEDIAAN DAN PENYELENGGARAAN POINT OF PRESENCE (POP)
 FASA 2: HAB INFRASTRUTUK GENTIAN OPTIK BERHAMPIRAN DENGAN
 SEKOLAH, KAWASAN PERINDUSTRIAN, PREMIS KERAJAAN DAN KOMUNITI
 SEKITARNYA OLEH KEMENTERIAN KOMUNIKASI MALAYSIA – ZON UTARA
 (KKMM.400-11/17/132(1))

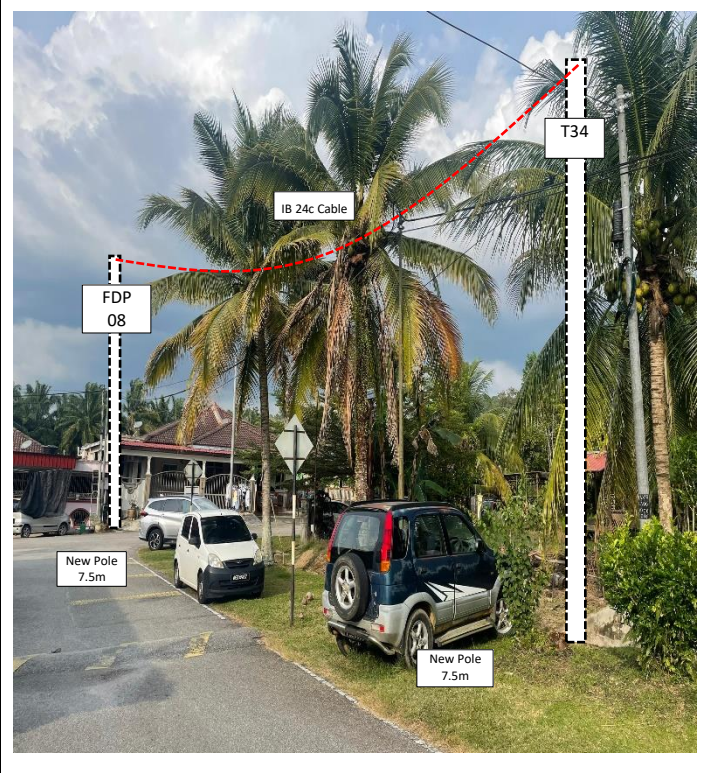
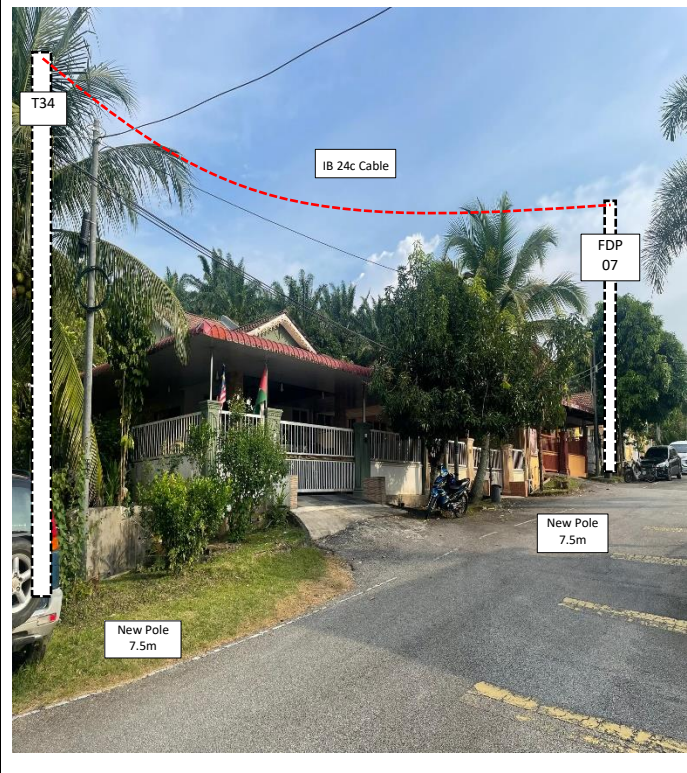
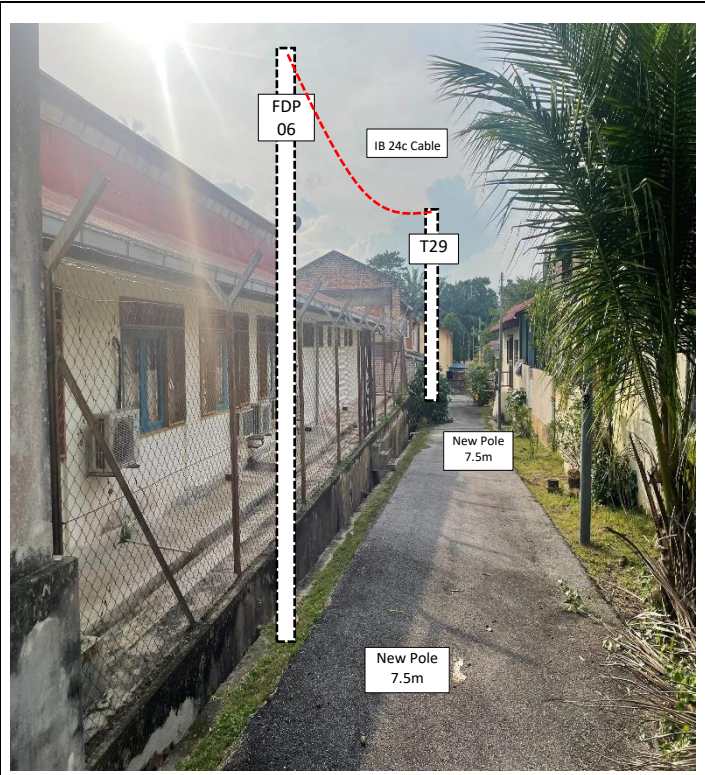
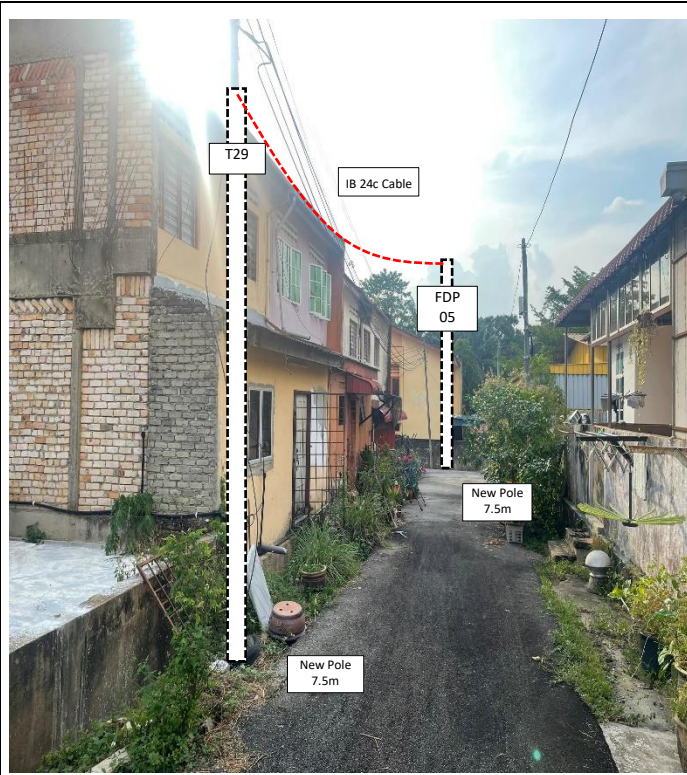


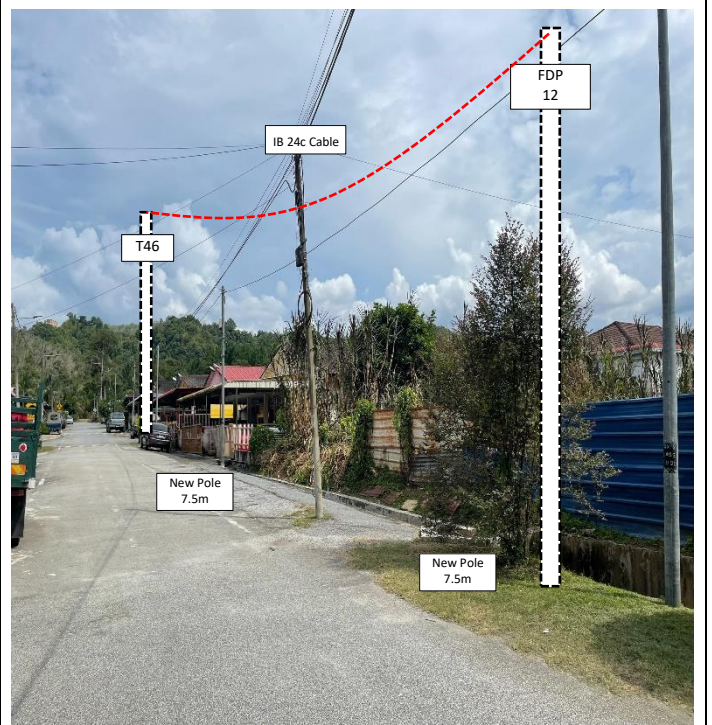
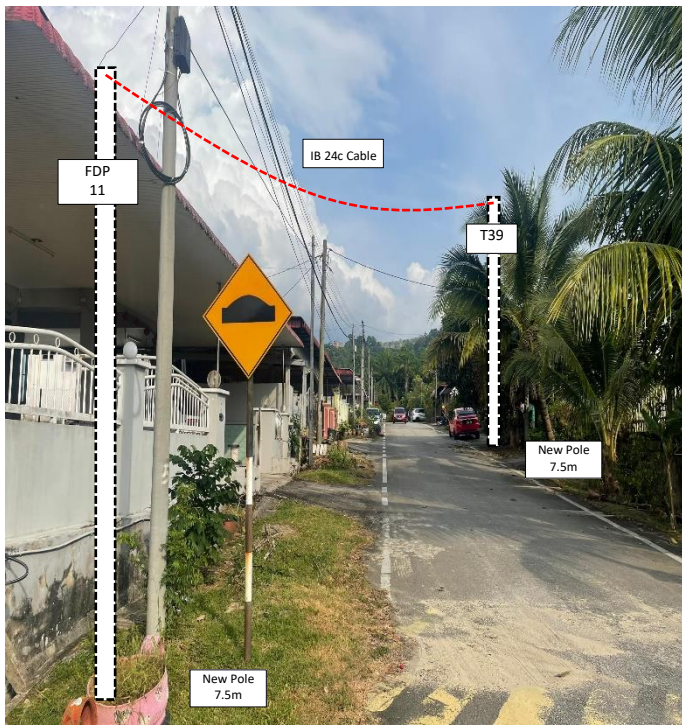
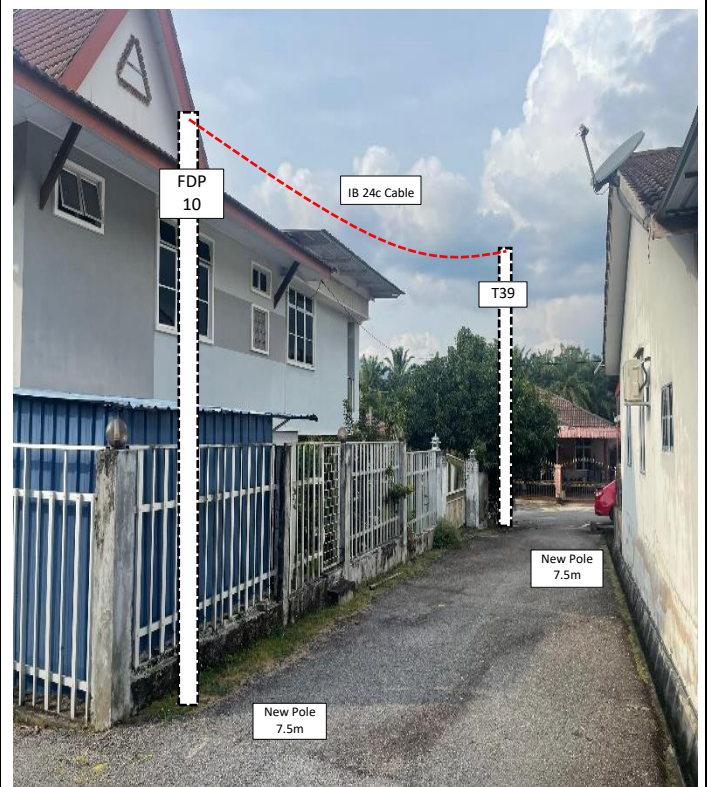
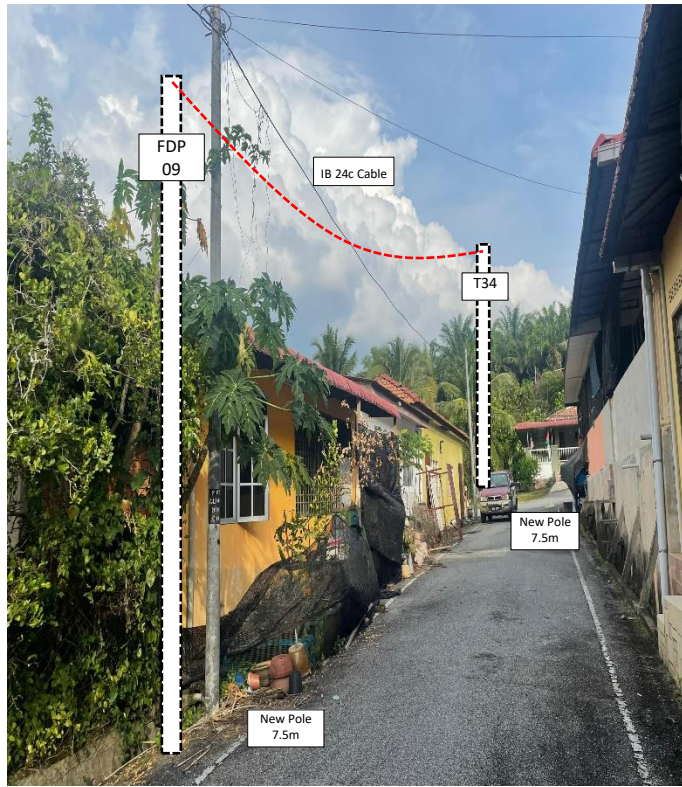
WABTECH SDN BHD
(1398387-0)

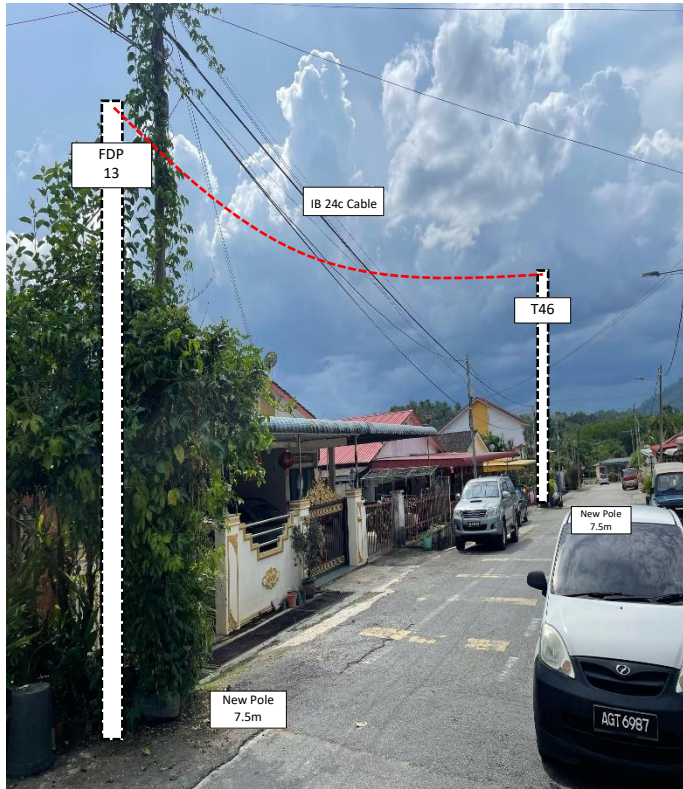
No.	Pole Number	Distance (m)	Latitude	Longitude	Local Authority
40	T039	25	5.709437	101.002935	Majlis Daerah Pengkalan Hulu
41	T040	32	5.709554	101.002747	Majlis Daerah Pengkalan Hulu
42	T041	27	5.709641	101.002472	Majlis Daerah Pengkalan Hulu
43	T042	22	5.709726	101.002239	JKR
44	T043	22	5.709917	101.002296	JKR
45	T044	42	5.710101	101.002379	JKR
46	T045	37	5.710039	101.002754	Majlis Daerah Pengkalan Hulu
47	T046	44	5.709946	101.003075	Majlis Daerah Pengkalan Hulu
48	T047	44	5.709851	101.003458	Majlis Daerah Pengkalan Hulu

5.0 SITE PHOTOS - PROPOSED NEW POLE











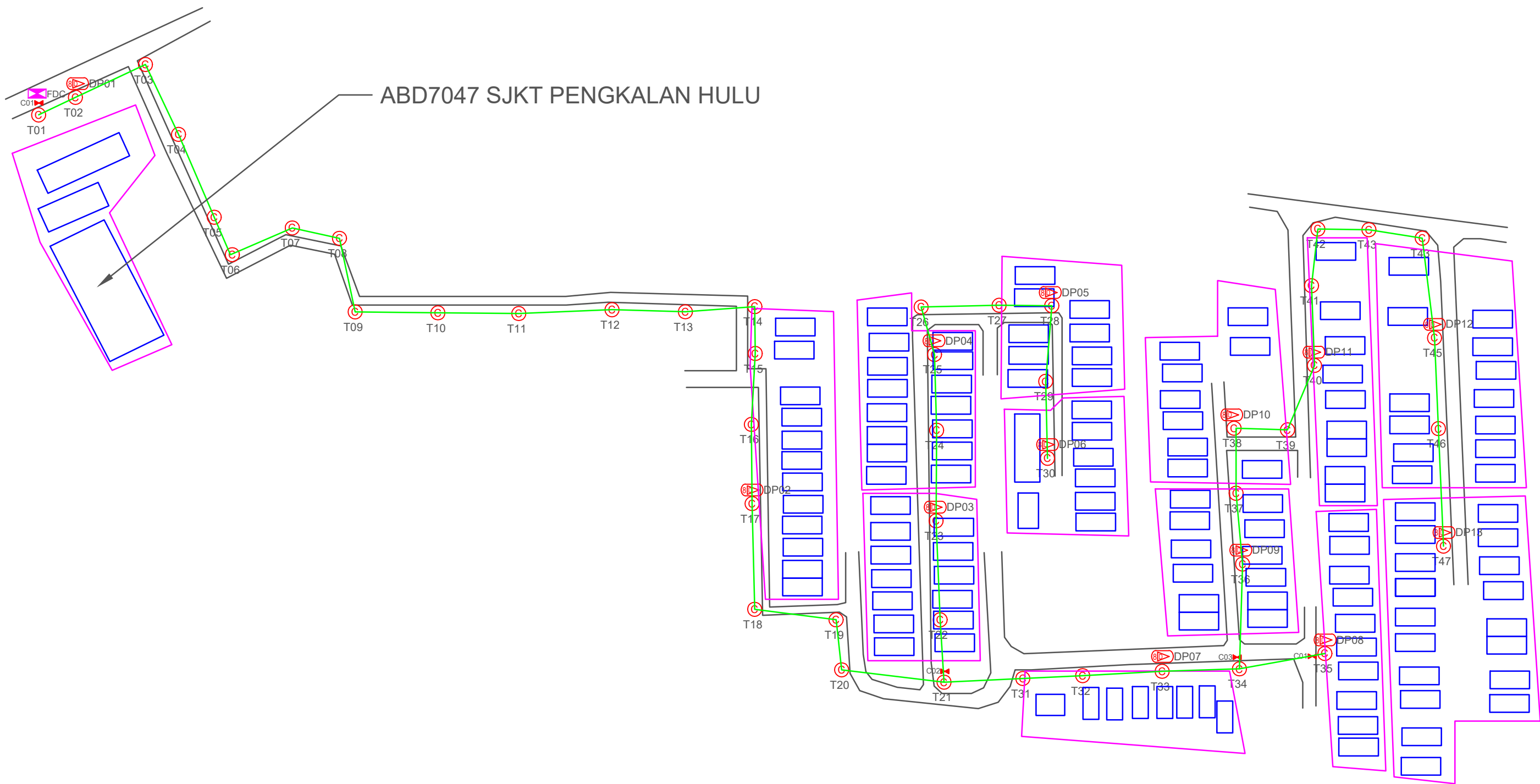
PROJEK PENYEDIAAN DAN PENYELENGGARAAN POINT OF PRESENCE (POP)
FASA 2: HAB INFRASTRUTUK GENTIAN OPTIK BERHAMPIRAN DENGAN
SEKOLAH, KAWASAN PERINDUSTRIAN, PREMIS KERAJAAN DAN KOMUNITI
SEKITARNYA OLEH KEMENTERIAN KOMUNIKASI MALAYSIA – ZON UTARA
(KKMM.400-11/17/132(1))



WABTECH SDN BHD
(1398387-X)

6.0 3rd PARTIES DEPENDENCIES

NO	LOCAL COUNCIL / AUTHORITY	REMARK
1	Majlis Daerah Pengkalan Hulu	1333m
2	JKR Daerah Pengkalan Hulu	60m

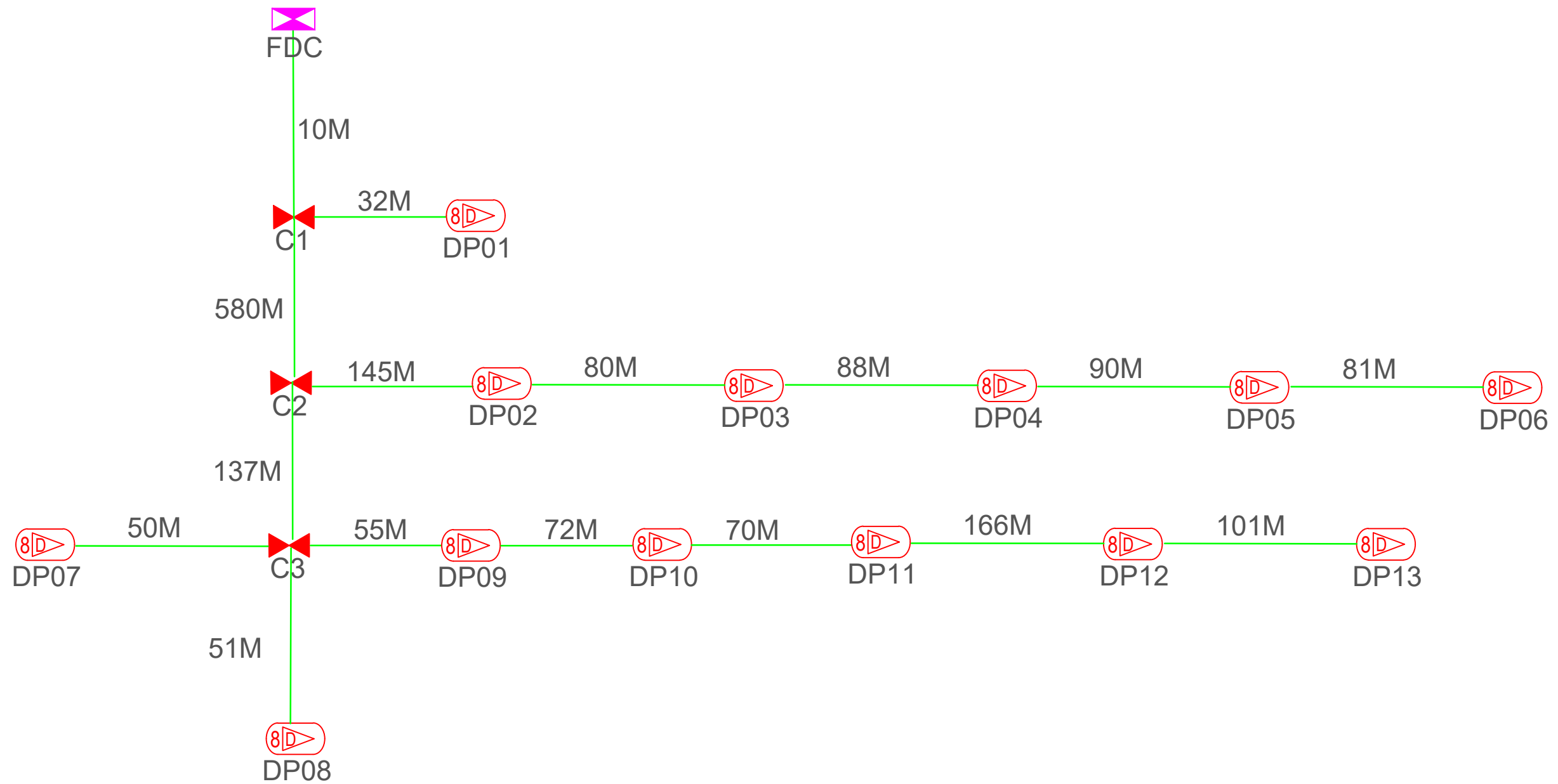


ABD7047 SJKT PENGKALAN HULU

TOTAL HOME PASSES: 104 UNITS

LEGEND										
	12C FOC	Installed 1:4 splitter in FDC		Installed Pole (9m)		New Manhole(JRC7)		Tension Small / Tension Big		MH NO.
	24C FOC	FDP with (1:8) splitter		Installed Riser		House Number		Existing Manhole		Existing TNB Pole NO.
	48C FOC	Closure		Suspension Big		Existing TNB Pole		Closure NO.		New Pole NO.
	96C FOC	New Manhole (PT)		Suspension Small		LOOP		FDP NO.		SEE A-A in this page
	144C FOC	Installed Pole (7.5M)		FDC		FDP Boundary		FDC NO.		SEE SHEET XXXX

KEY PLAN : 	PROJECT OWNER : KEMENTERIAN KOMUNIKASI	MAIN CONTRACTOR APEX COMMUNICATIONS SDN BHD PRIVASAT	SUB-CONTRACTOR : WABTECH SDN BHD	PROJECT TITLE: CONTRACT FOR THE PROVISION OF SUPPLY, INSTALLATION, AND COMMISSIONING OF FTTX NETWORK INFRASTRUCTURE - POP 2 PROJECT D-SIDE - ABD7047 - SJKT PENGKALAN HULU	DRAWING TITLE: ABD7047 SJKT PENGKALAN HULU	Design By ENGINEER	Date DATE
						Drawn By CAD ENGINEER	Scale NTS
PROJECT PHASE: PROJECT PHASE						Checked By ENGINEER	Job Number JOB/NUMBER
DRAWING NUMBER : DRAWING/NUMBER						Sheet : 1/1	Size : A3
THIS PRINT AND ITS COPYRIGHT ARE THE PROPERTY							



TOTAL FOC DISTANCE: 1,808 METERS

LEGEND

12C FOC	Installed 1:4 splitter in FDC	Installed Pole (9m)	C7	New Manhole(JRC7)	TS / TB	Tension Small / Tension Big	MH1	MH NO.
24C FOC	FDP with (1:8) splitter	Installed Riser	#	House Number	Existing Manhole	TKS-1	Existing TNB Pole NO.	
48C FOC	Closure	Suspension Big	Existing TNB Pole	C01	Closure NO.	P001	New Pole NO.	
96C FOC	New Manhole (PT)	Suspension Small	LOOP	FDP1	FDP NO.	(A)	SEE A-A in this page	(A)
144C FOC	Installed Pole (7.5M)	FDC	FDP Boundary	FDC	FDC NO.	(A)	SEE SHEET XXXX	(A)

KEY PLAN : 	PROJECT OWNER : KEMENTERIAN KOMUNIKASI	MAIN CONTRACTOR : PRIVASAT	SUB-CONTRACTOR : WABTECH SDN BHD	PROJECT TITLE: CONTRACT FOR THE PROVISION OF SUPPLY, INSTALLATION, AND COMMISSIONING OF FTTX NETWORK INFRASTRUCTURE - POP 2 PROJECT D-SIDE - ABD7047 - SJKT PENGKALAN HULU	DRAWING TITLE: ABD7047 SJKT PENGKALAN HULU	Design By ENGINEER	Date DATE
						Drawn By CAD ENGINEER	Scale NTS
PROJECT PHASE: PROJECT PHASE						Checked By ENGINEER	Job Number JOB/NUMBER
DRAWING NUMBER : DRAWING/NUMBER						Sheet : 1/1	
THIS PRINT AND ITS COPYRIGHT ARE THE PROPERTY						Size : A3	