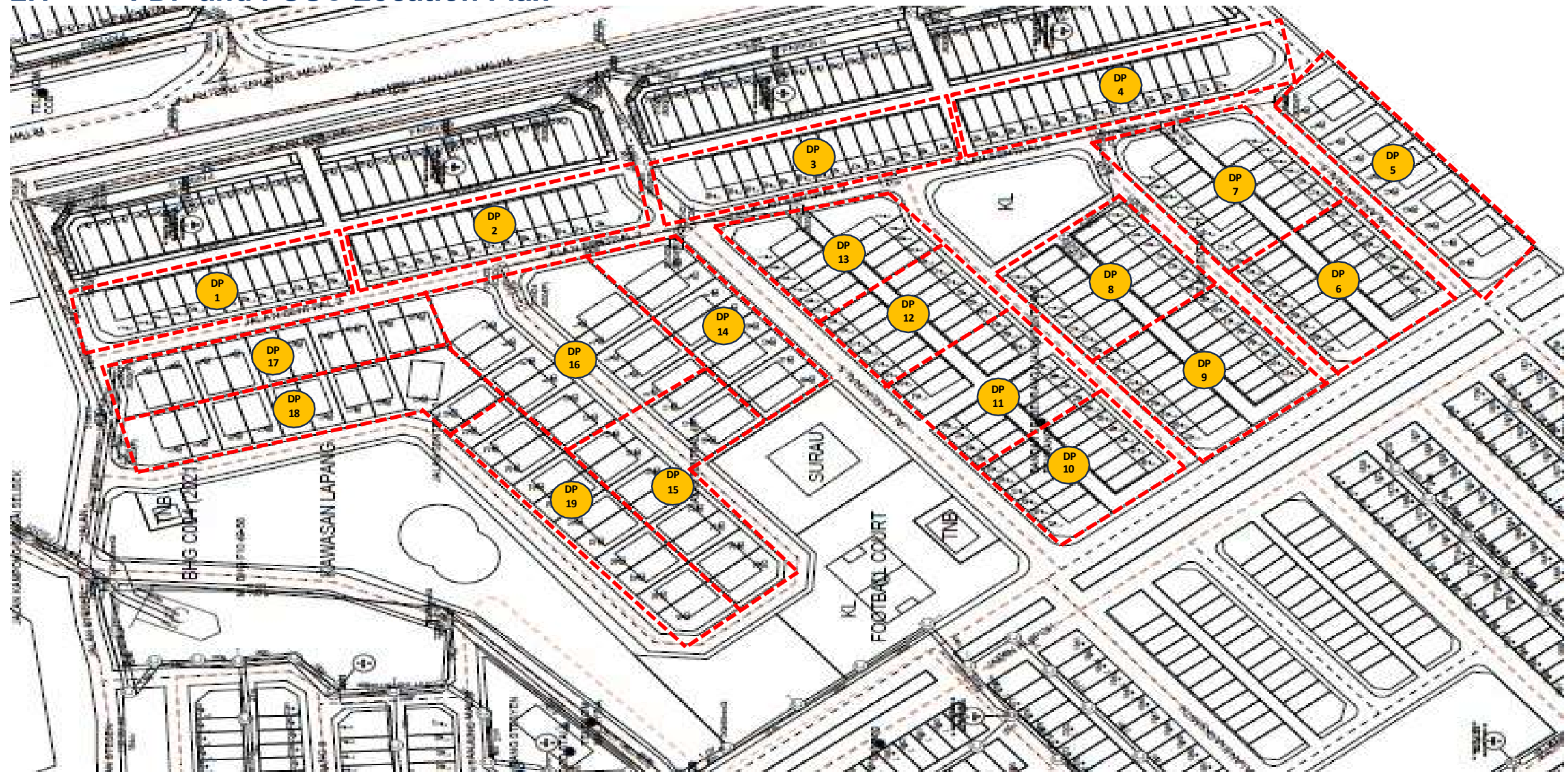
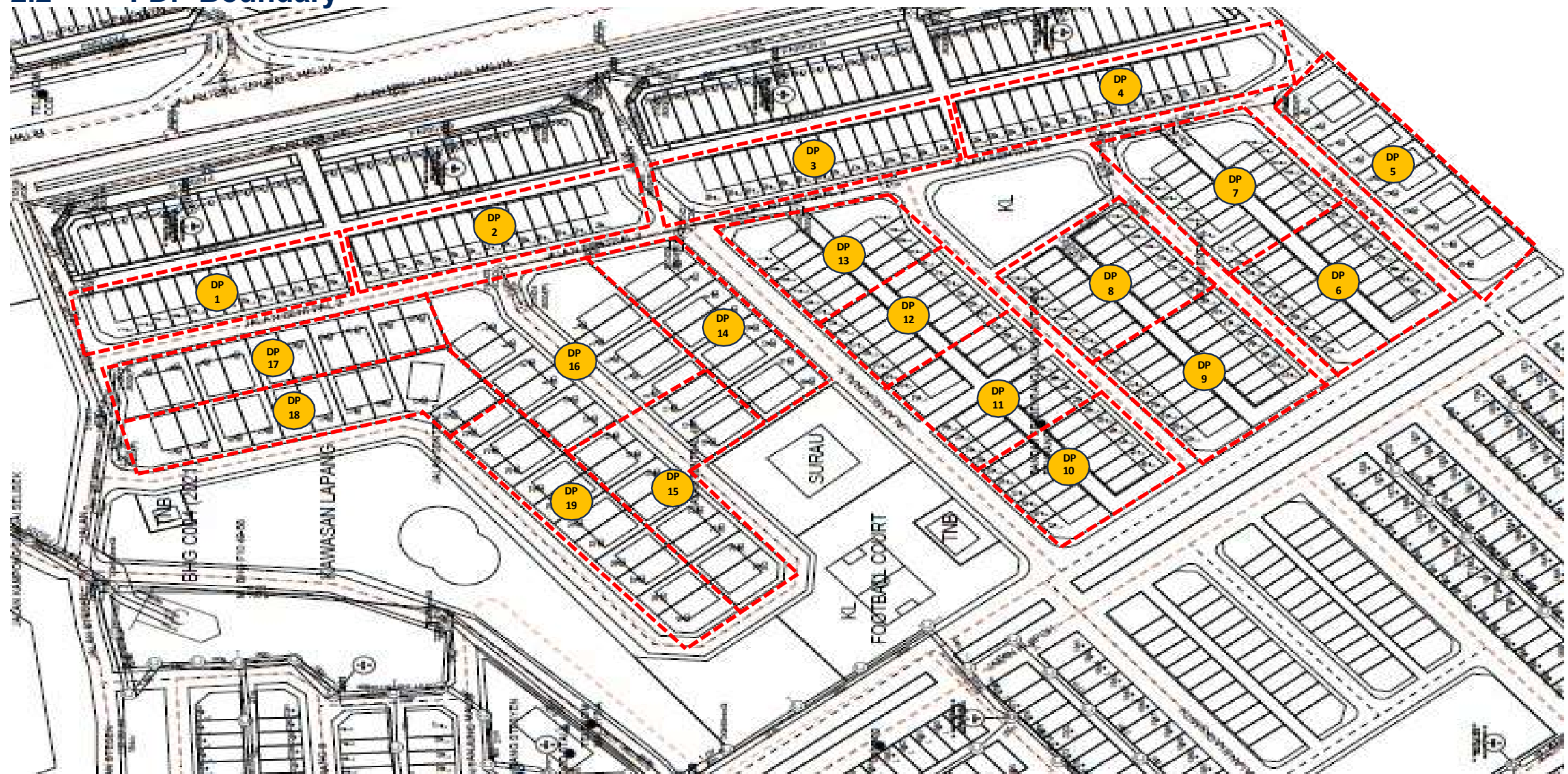


2.1 FDP and FOSC Location Plan



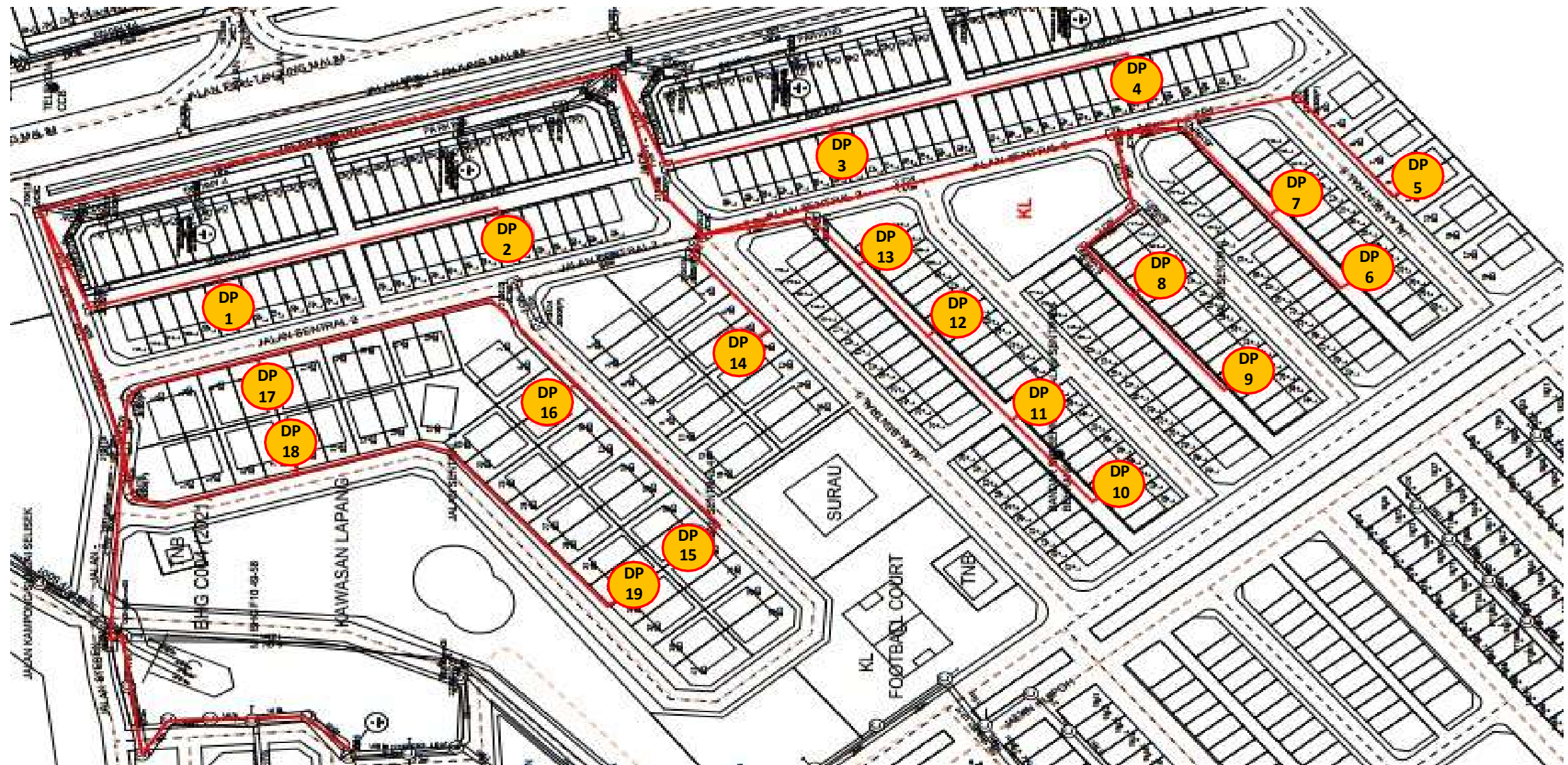
Legend:  FDP

2.2 FDP Boundary



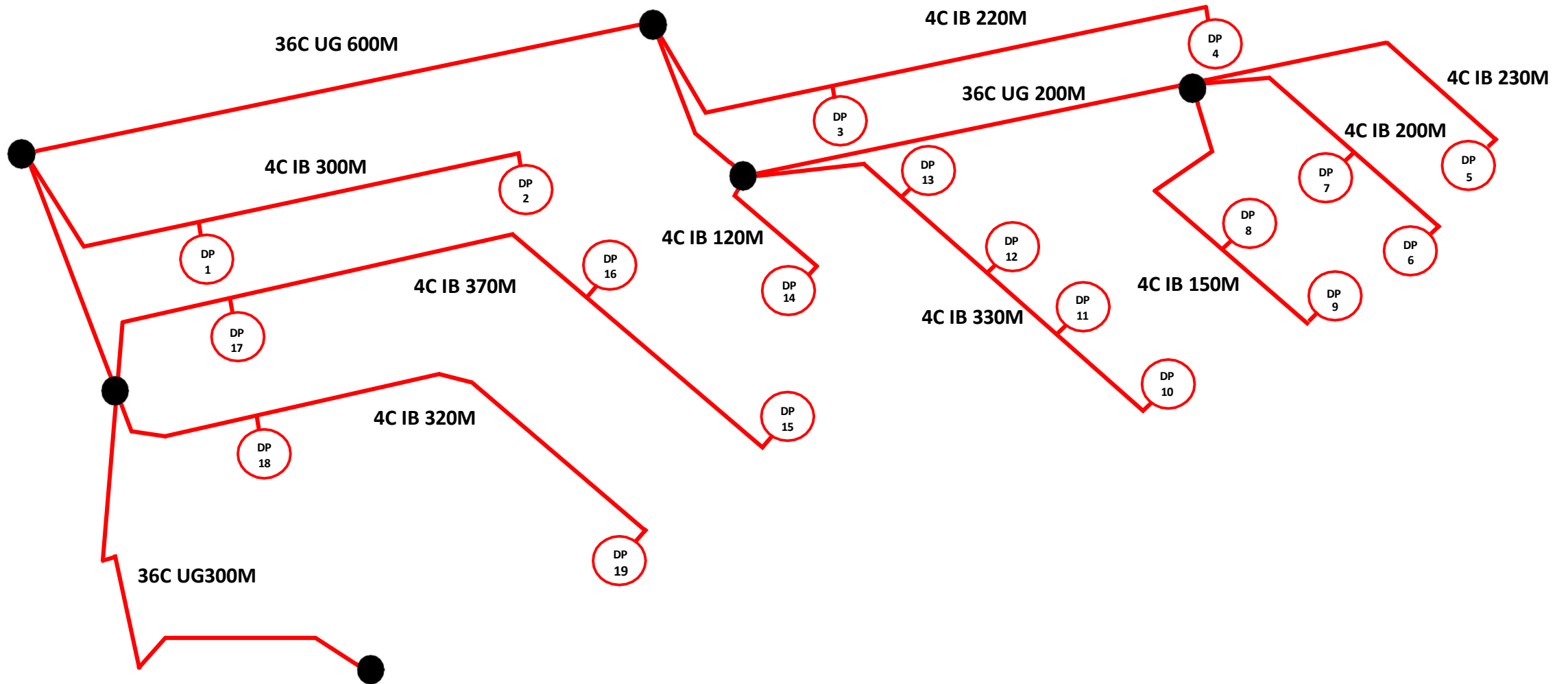
Legend:  FDP

2.3 Cable Plan



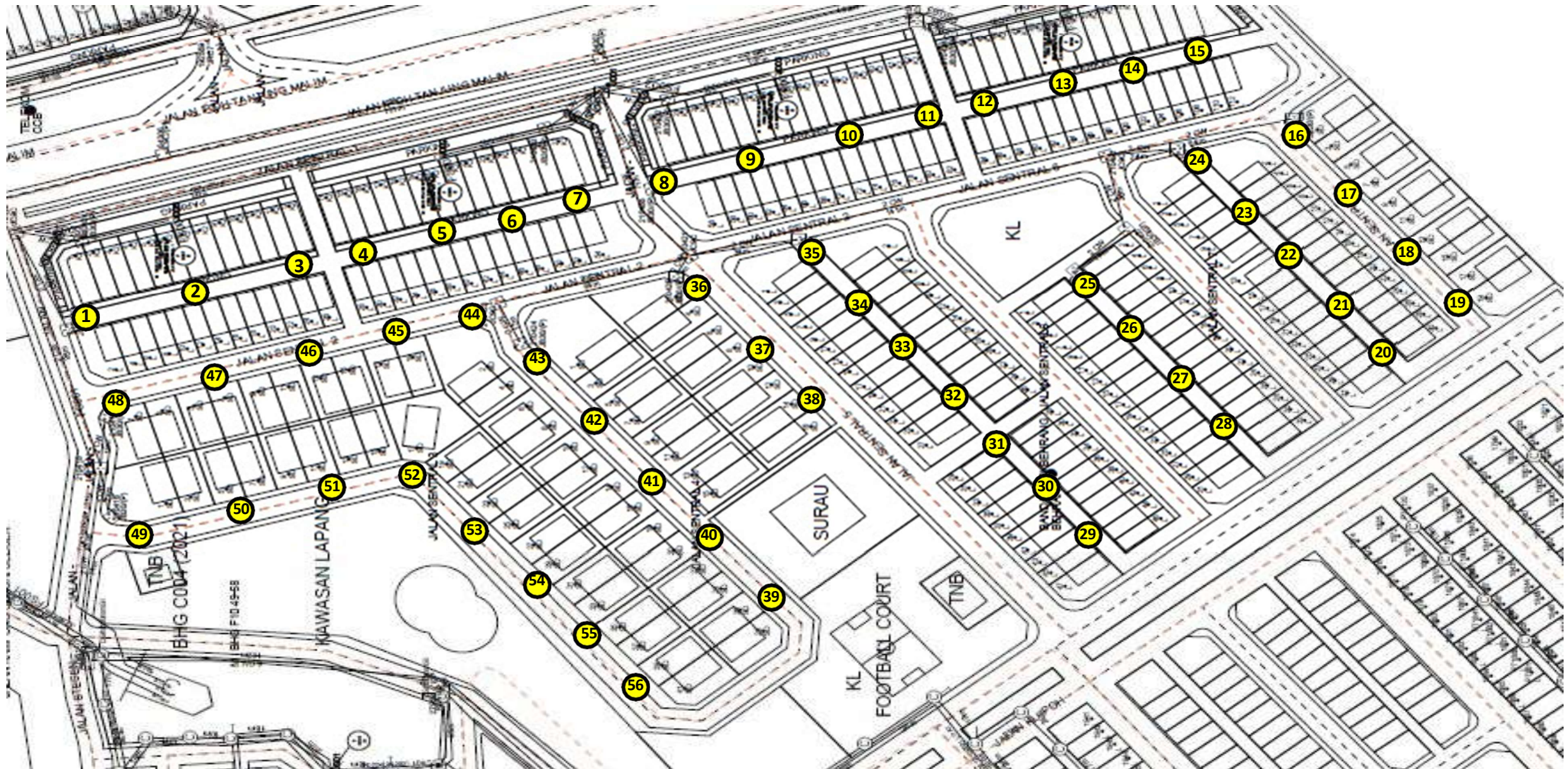
Legend:  FDP

2.3 Cable Plan



Legend: ○ FDP

3.1 New Pole Plan



3.2 New Pole details

No	POLE ID	Pole Type	GPS Coordinate
1	1	CONCRETE POLE 7.5M	3°44'44.56"N, 101°27'21.41"E
2	2	CONCRETE POLE 7.5M	3°44'43.76"N, 101°27'21.63"E
3	3	CONCRETE POLE 7.5M	3°44'42.94"N, 101°27'21.82"E
4	4	CONCRETE POLE 7.5M	3°44'42.11"N, 101°27'22.02"E
5	5	CONCRETE POLE 7.5M	3°44'41.30"N, 101°27'22.25"E
6	6	CONCRETE POLE 7.5M	3°44'40.48"N, 101°27'22.48"E
7	7	CONCRETE POLE 7.5M	3°44'39.68"N, 101°27'22.72"E
8	8	CONCRETE POLE 7.5M	3°44'38.85"N, 101°27'22.93"E
9	9	CONCRETE POLE 7.5M	3°44'38.03"N, 101°27'23.15"E
10	10	CONCRETE POLE 7.5M	3°44'37.20"N, 101°27'23.40"E
11	11	CONCRETE POLE 7.5M	3°44'36.38"N, 101°27'23.63"E
12	12	CONCRETE POLE 7.5M	3°44'35.52"N, 101°27'23.82"E
13	13	CONCRETE POLE 7.5M	3°44'34.70"N, 101°27'24.07"E
14	14	CONCRETE POLE 7.5M	3°44'33.88"N, 101°27'24.28"E
15	15	CONCRETE POLE 7.5M	3°44'32.90"N, 101°27'24.60"E
16	16	CONCRETE POLE 7.5M	3°44'32.17"N, 101°27'23.69"E
17	17	CONCRETE POLE 7.5M	3°44'31.55"N, 101°27'22.93"E
18	18	CONCRETE POLE 7.5M	3°44'30.92"N, 101°27'22.17"E

3.2 New Pole details

No	POLE ID	Pole Type	GPS Coordinate
19	19	CONCRETE POLE 7.5M	3°44'30.29"N, 101°27'21.41"E
20	20	CONCRETE POLE 7.5M	3°44'30.93"N, 101°27'20.74"E
21	21	CONCRETE POLE 7.5M	3°44'31.59"N 101°27'21.51"E
22	22	CONCRETE POLE 7.5M	3°44'32.27"N 101°27'22.27"E
23	23	CONCRETE POLE 7.5M	3°44'32.99"N 101°27'23.10"E
24	24	CONCRETE POLE 7.5M	3°44'33.51"N 101°27'23.66"E
25	25	CONCRETE POLE 7.5M	3°44'34.33"N 101°27'22.30"E
26	26	CONCRETE POLE 7.5M	3°44'33.53"N 101°27'21.61"E
27	27	CONCRETE POLE 7.5M	3°44'32.62"N 101°27'20.82"E
28	28	CONCRETE POLE 7.5M	3°44'31.87"N 101°27'20.13"E
29	29	CONCRETE POLE 7.5M	3°44'33.35"N 101°27'18.36"E
30	30	CONCRETE POLE 7.5M	3°44'34.12"N 101°27'19.10"E
31	31	CONCRETE POLE 7.5M	3°44'34.87"N 101°27'19.84"E
32	32	CONCRETE POLE 7.5M	3°44'35.48"N 101°27'20.44"E
33	33	CONCRETE POLE 7.5M	3°44'36.19"N 101°27'21.13"E
34	34	CONCRETE POLE 7.5M	3°44'36.94"N 101°27'21.87"E
35	35	CONCRETE POLE 7.5M	3°44'37.55"N 101°27'22.45"E
36	36	CONCRETE POLE 7.5M	3°44'38.67"N 101°27'22.24"E

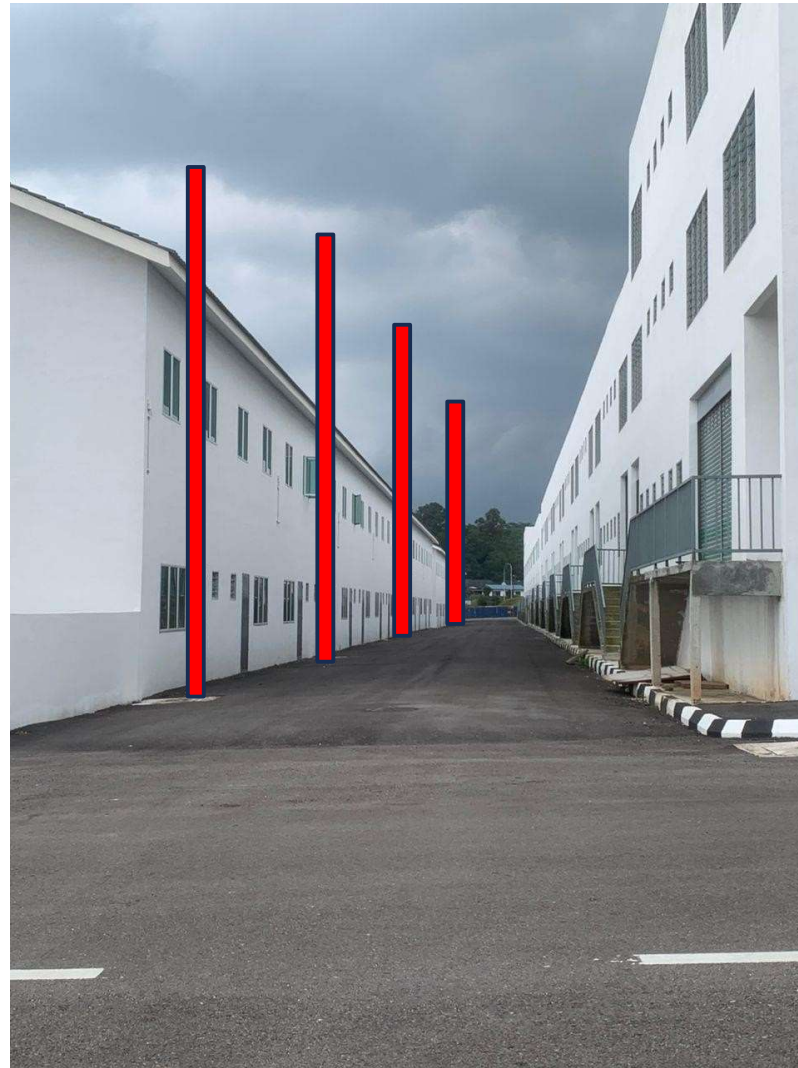
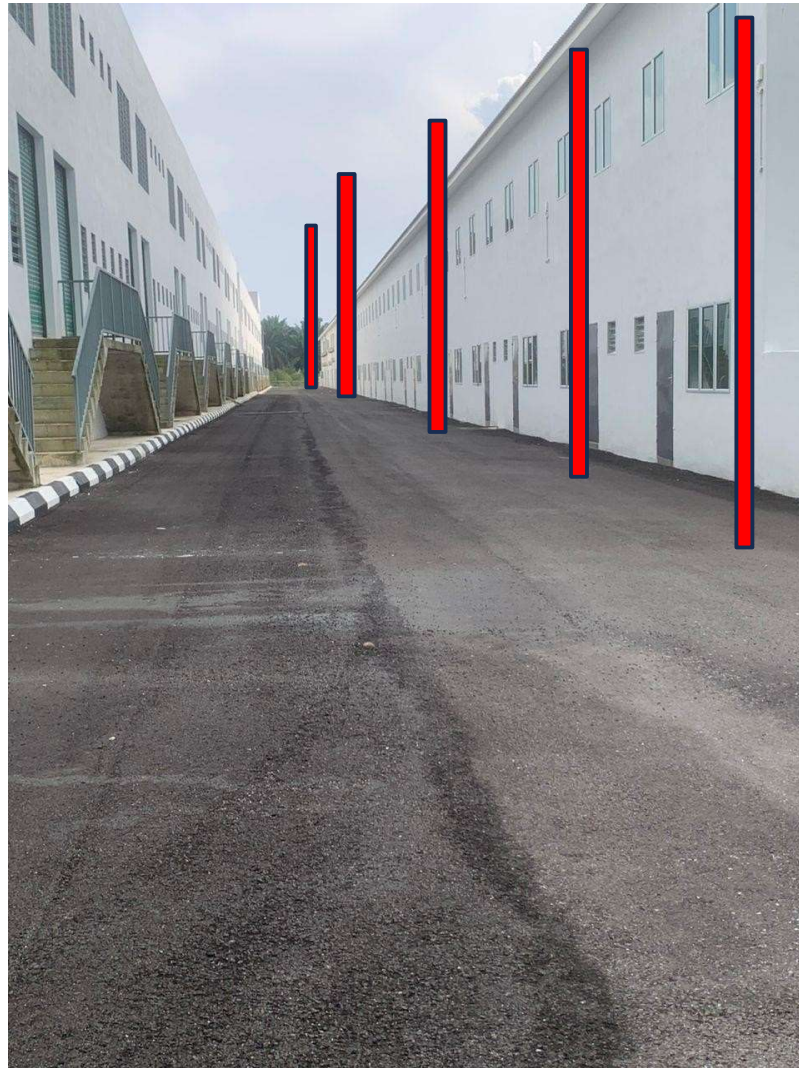
3.2 New Pole details

No	POLE ID	Pole Type	GPS Coordinate
37	37	CONCRETE POLE 7.5M	3°44'37.79"N 101°27'21.30"E
38	38	CONCRETE POLE 7.5M	3°44'36.69"N 101°27'20.13"E
39	39	CONCRETE POLE 7.5M	3°44'36.99"N 101°27'18.04"E
40	40	CONCRETE POLE 7.5M	3°44'37.76"N 101°27'18.93"E
41	41	CONCRETE POLE 7.5M	3°44'38.44"N 101°27'19.71"E
42	42	CONCRETE POLE 7.5M	3°44'39.10"N 101°27'20.47"E
43	43	CONCRETE POLE 7.5M	3°44'39.67"N 101°27'21.14"E
44	44	CONCRETE POLE 7.5M	3°44'40.22"N 101°27'21.76"E
45	45	CONCRETE POLE 7.5M	3°44'41.28"N 101°27'21.45"E
46	46	CONCRETE POLE 7.5M	3°44'42.17"N 101°27'21.18"E
47	47	CONCRETE POLE 7.5M	3°44'43.03"N 101°27'20.95"E
48	48	CONCRETE POLE 7.5M	3°44'43.94"N 101°27'20.67"E
49	49	CONCRETE POLE 7.5M	3°44'43.45"N 101°27'19.13"E
50	50	CONCRETE POLE 7.5M	3°44'42.47"N 101°27'19.47"E
51	51	CONCRETE POLE 7.5M	3°44'41.48"N 101°27'19.82"E
52	52	CONCRETE POLE 7.5M	3°44'40.64"N 101°27'20.10"E
53	53	CONCRETE POLE 7.5M	3°44'40.00"N 101°27'19.45"E
54	54	CONCRETE POLE 7.5M	3°44'39.31"N 101°27'18.71"E

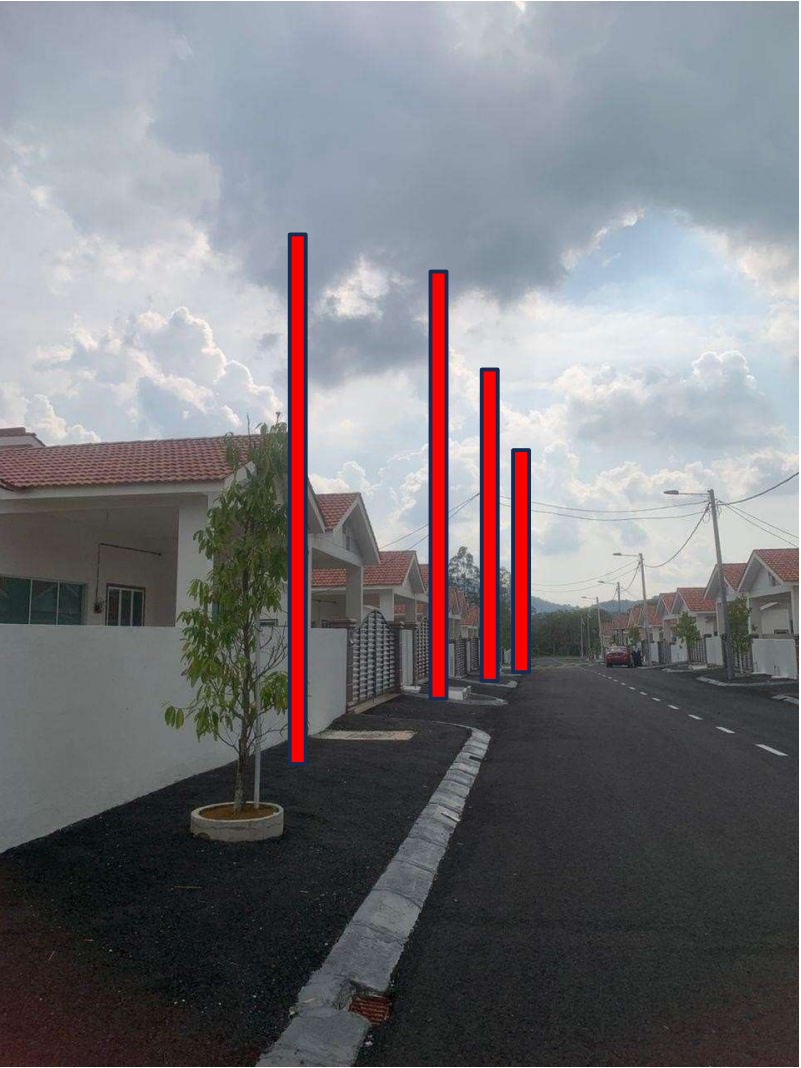
3.2 New Pole details

No	POLE ID	Pole Type	GPS Coordinate
55	55	CONCRETE POLE 7.5M	3°44'38.67"N 101°27'18.03"E
56	56	CONCRETE POLE 7.5M	3°44'37.92"N 101°27'17.25"E

3.3 New Pole Illustration



3.3 New Pole Illustration



3.3 New Pole Illustration

