

Template – Technical Proposal for TM Landed Project (Rev 0)

Revision Record

Revision No.	Description Of Change	Author	Effective Date
0	New Document	1. MUHAMAD NUR ZULKARNAIN BIN ABD HANIF	06 JAN 2025

Technical Proposal for TM Project



Project Description:	TITAN SRR FTTH BHG_CXXX TAMAN BEHRANG CENTRAL
Project Number:	TMNA/241976
TM Node	BHG (BEHRANG)
Region	NORTHERN
NE ID	BHG_C004
Total FTTH Ports	152
Total Property	
PF (%)	
RFSI Date	15 APRIL 2025
GPS Coordinate	

Prepared by:	MUHAMAD NUR ZULKARNAIN BIN ABD HANIF
Company Name:	EVERTRONICS (M) SDN BHD
Date:	06 JAN 2025
TP Revision:	0

Contents

- 1.0 **FDC information**
 - 1.1 FDC Boundary
 - 1.2 FDC Details and Illustration

- 2.0 **FDP information**
 - 2.1 FDP and FOOSC Location
 - 2.2 FDP Boundary
 - 2.3 Cable Plan
 - 2.4 Spur Information
 - 2.5 FDP details
 - 2.6 Tie FDP details

- 3.0 **New Pole information**
 - 3.1 Pole plan
 - 3.2 Pole details
 - 3.3 Illustration

- 4.0 **Material Specification**
 - 4.1 Fiber Accessories - FDC/Mini FDC/FDP/ODF
 - 4.2 Civil Accessories – Manhole/Pole

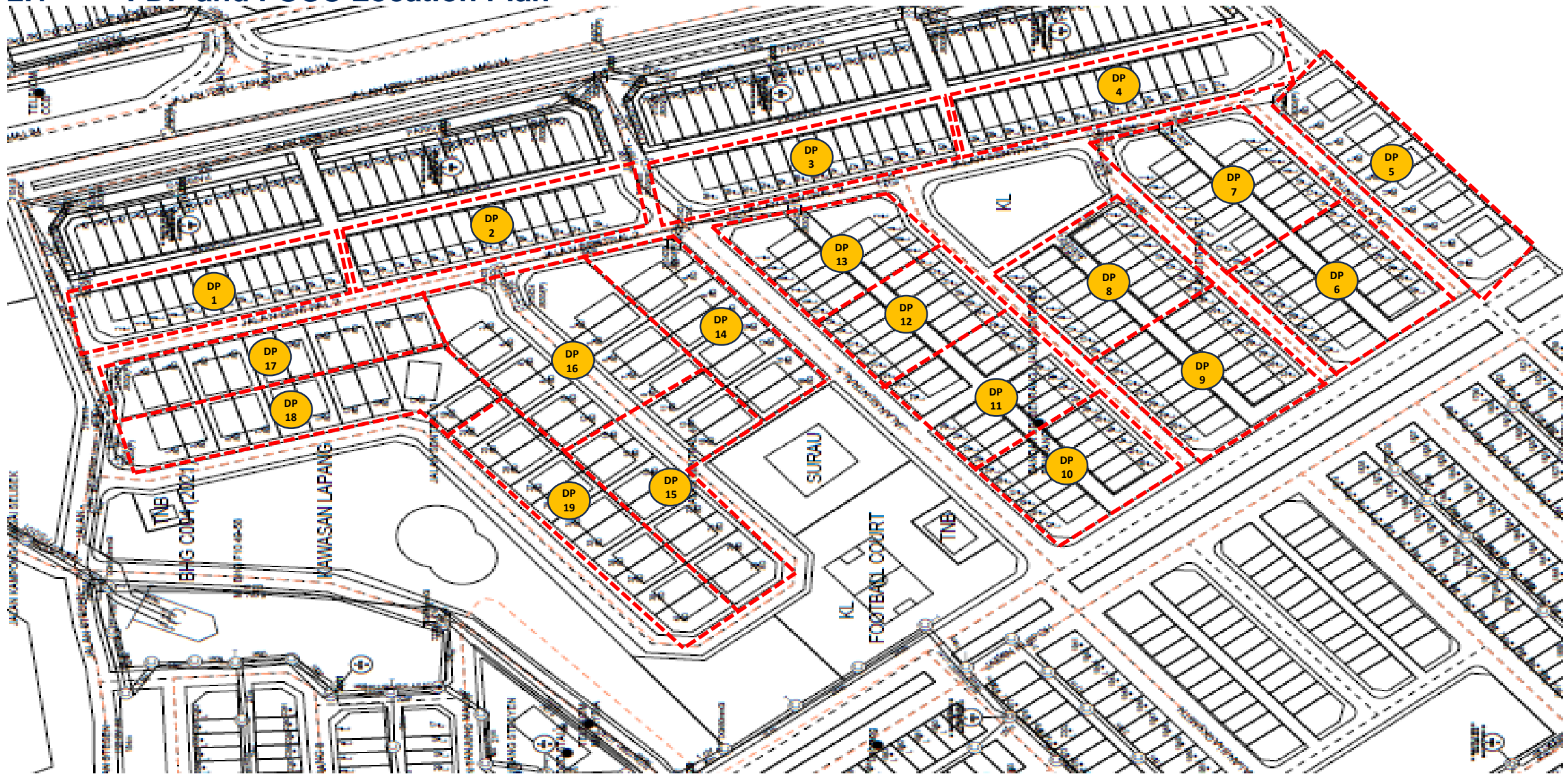
- 5.0 **Costing & BOQ**
 - 5.1 Project BOQ
 - 5.2 Costing

MATRIX REQUIREMENT FOR PROJECT

NO	Item	Detail Item	Remark	TP Check list					
				FTTH >1 DP	FTTH 1 FDP	Add DP / Tie DP	NID/5G	Civil	Main FOC
1	Cabinet location	Boundary	Polygon on Map showing area covered by FDC	C	C	NR	NR	NR	NR
		Detail Illustration	Illustration showing FDP location on picture, table with detail address, latlong	C	C	C	C	NR	NR
2	Cable Plan	On Map	Cable Plan, ID, Distance, Route, Distance, Joint Location illustration on map	C	C	C	C	NR	C
		SLD	Cable Plan	C	NR	NR	NR	NR	NR
3	FDP	Detail FDP/Tie DP	Table with FDP & Tie DP Detail	C	C	C	NR	NR	NR
		FDP, Tie DP Boundary	Polygon on Map for landed or Building image for Highrise showing area covered by each FDP	C	C	C	NR	NR	NR
4	Pole	Plan	Location and quantity on Map	C	C	C	C	C	C
		Illustration	Illustration showing Pole location on picture, table with detail pole type, latlong	C	C	C	C	C	C
5	Civil	Plan	Location and quantity on Map	C	C	C	C	C	C
		Illustration	Illustration showing civil location on picture, table with detail address, latlong	C	C	C	C	C	C
		Civil Manhole Detail	Table with Manhole Detail	C	C	C	C	C	C
6	BOQ & BOM	Detail BOQ	Detail PU item related to project. Show – PU number, quantity and costDetail	C	C	C	C	C	C
		Detail BOM*	Material related to project	C	C	C	C	C	C
7	Costing		Overall cost	C	C	C	C	C	C

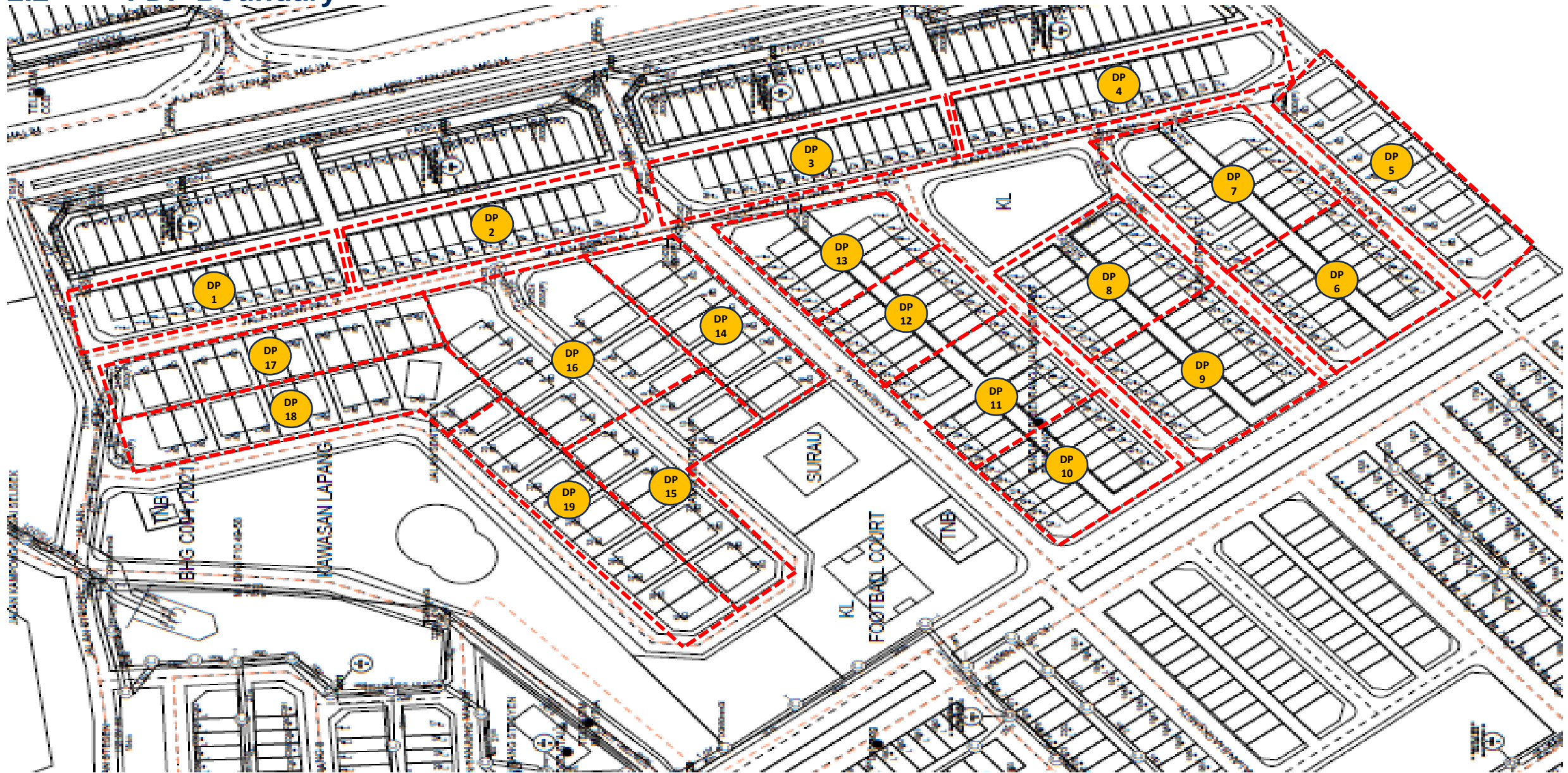
*CNC Lite only

2.1 FDP and FOSC Location Plan



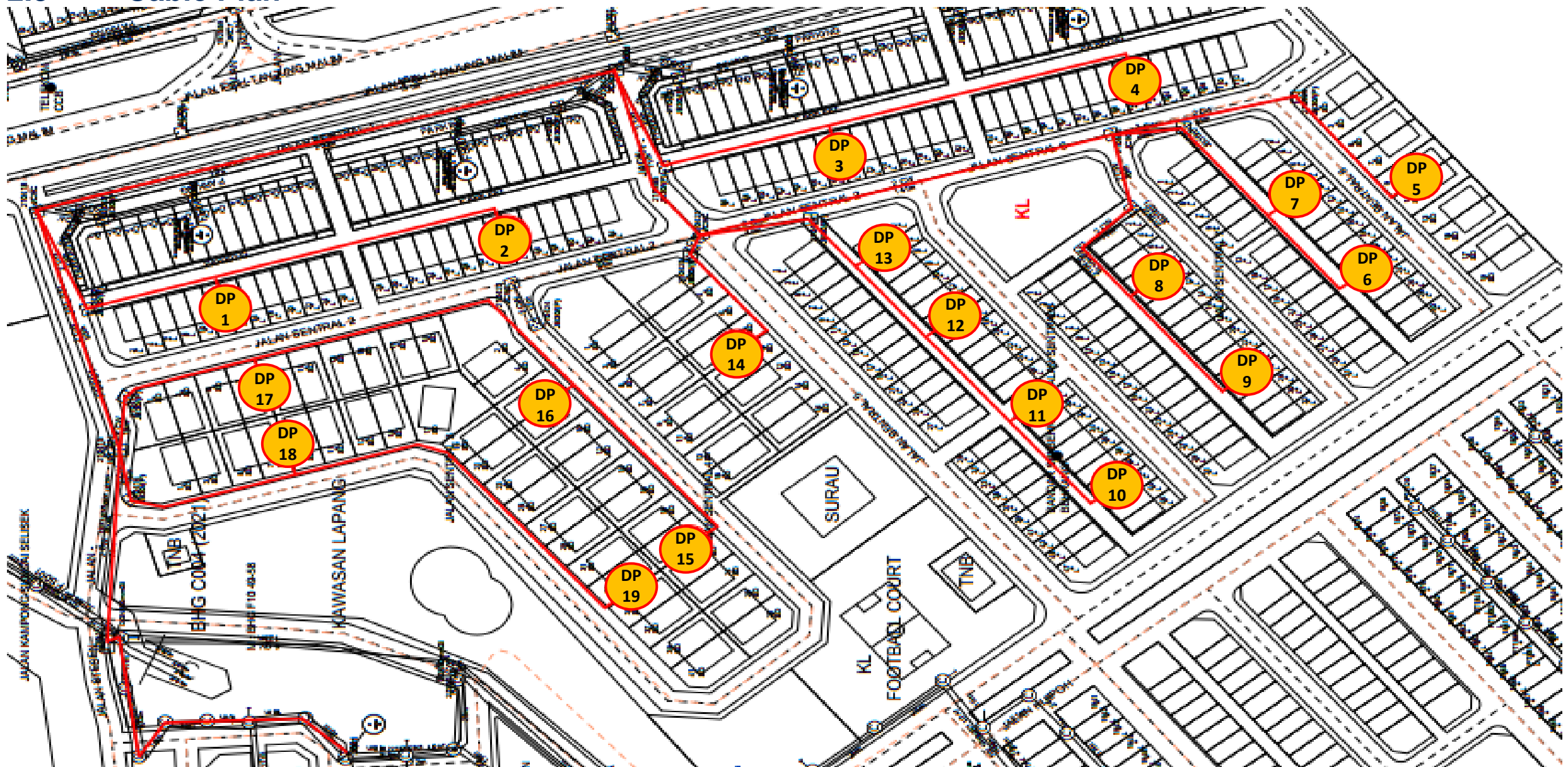
Legend:  FDP

2.2 FDP Boundary



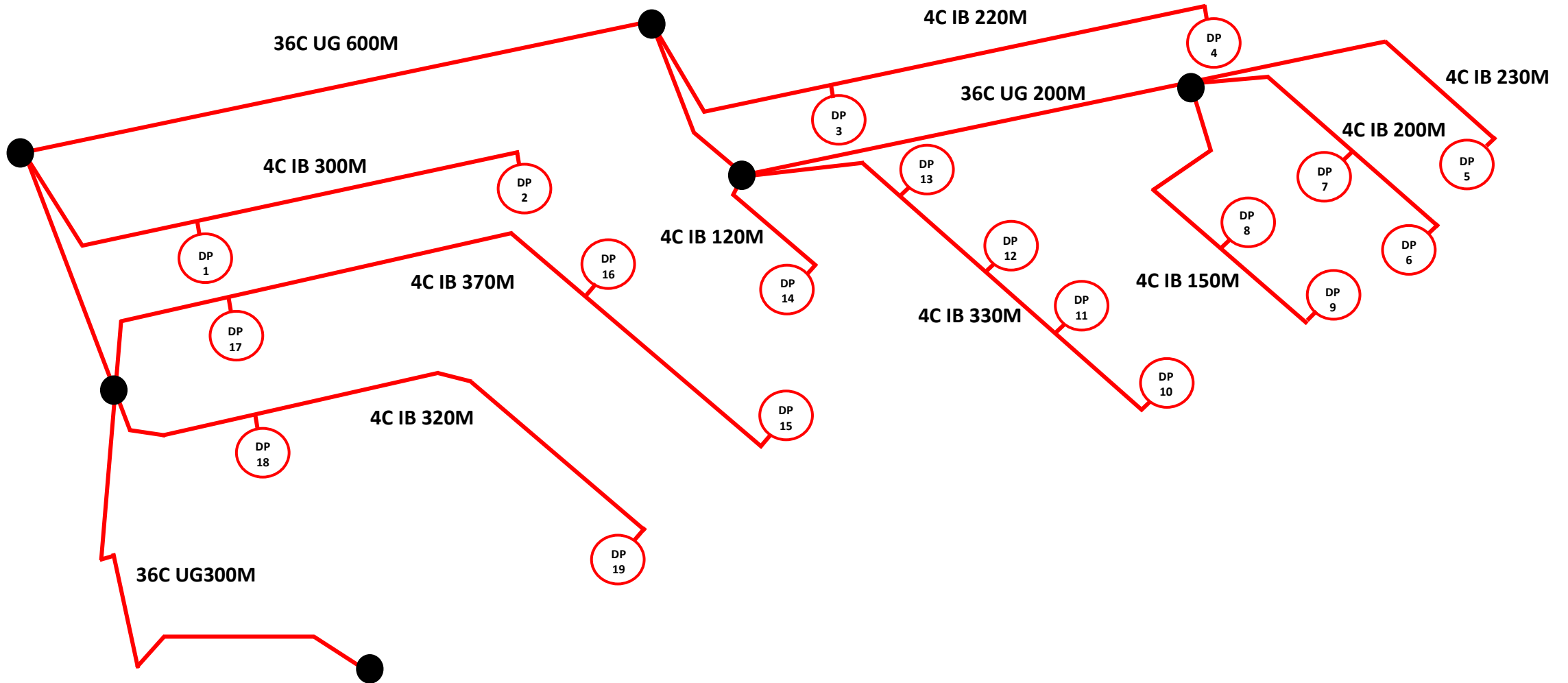
Legend:  FDP

2.3 Cable Plan



Legend:  FDP

2.3 Cable Plan



Legend: ○ FDP

2.5 FDP Details – Normal Project

No	Info	Type	Road/Location	Ports	Properties Covered	Remark
1	DP0001	ON POLE	LORONG BELAKANG ANTARA NO.12 & 14 JALAN SENTRAL 2, TAMAN BEHRANG CENTRAL, 35950 BEHRANG, PERAK.	8	13	
2	DP0002	ON POLE	LORONG BELAKANG ANTARA NO.42 & 44 JALAN SENTRAL 2, TAMAN BEHRANG CENTRAL, 35950 BEHRANG, PERAK.	8	14	
3	DP0003	ON POLE	LORONG BELAKANG ANTARA NO.68 & 70 JALAN SENTRAL 2, TAMAN BEHRANG CENTRAL, 35950 BEHRANG, PERAK.	8	14	
4	DP0004	ON POLE	LORONG BELAKANG ANTARA NO.100 & 102 JALAN SENTRAL 2, TAMAN BEHRANG CENTRAL, 35950 BEHRANG, PERAK.	8	15	
5	DP0005	ON POLE	HADAPAN RUMAH ANTARA NO.9 & 11 JALAN SENTRAL 8, TAMAN BEHRANG CENTRAL, 35950 BEHRANG, PERAK.	8	10	
6	DP0006	ON POLE	LORONG BELAKANG ANTARA NO.21 & 23 JALAN SENTRAL 7, TAMAN BEHRANG CENTRAL, 35950 BEHRANG, PERAK.	8	16	
7	DP0007	ON POLE	LORONG BELAKANG ANTARA NO.7 & 9 JALAN SENTRAL 7, TAMAN BEHRANG CENTRAL, 35950 BEHRANG, PERAK.	8	15	

2.5 FDP Details – Normal Project

No	Info	Type	Road/Location	Ports	Properties Covered	Remark
8	DP0008	ON POLE	LORONG BELAKANG ANTARA NO.8 & 10 JALAN SENTRAL 7, TAMAN BEHRANG CENTRAL, 35950 BEHRANG, PERAK.	8	16	
9	DP0009	ON POLE	LORONG BELAKANG ANTARA NO.24 & 26 JALAN SENTRAL 7, TAMAN BEHRANG CENTRAL, 35950 BEHRANG, PERAK.	8	16	
10	DP0010	ON POLE	LORONG BELAKANG ANTARA NO.43 & 45 JALAN SENTRAL 5, TAMAN BEHRANG CENTRAL, 35950 BEHRANG, PERAK.	8	12	
11	DP0011	ON POLE	LORONG BELAKANG ANTARA NO.33 & 35 JALAN SENTRAL 5, TAMAN BEHRANG CENTRAL, 35950 BEHRANG, PERAK.	8	13	
12	DP0012	ON POLE	LORONG BELAKANG ANTARA NO.19 & 21 JALAN SENTRAL 5, TAMAN BEHRANG CENTRAL, 35950 BEHRANG, PERAK.	8	12	
13	DP0013	ON POLE	LORONG BELAKANG ANTARA NO.7 & 9 JALAN SENTRAL 5, TAMAN BEHRANG CENTRAL, 35950 BEHRANG, PERAK.	8	10	
14	DP0014	ON POLE	HADAPAN RUMAH ANTARA NO.8 & 10 JALAN SENTRAL 5, TAMAN BEHRANG CENTRAL, 35950 BEHRANG, PERAK.	8	8	

2.5 FDP Details – Normal Project

No	Info	Type	Road/Location	Ports	Properties Covered	Remark
15	DP0015	ON POLE	HADAPAN RUMAH ANTARA NO.20 & 22 JALAN SENTRAL 4, TAMAN BEHRANG CENTRAL, 35950 BEHRANG, PERAK.	8	11	
16	DP0016	ON POLE	HADAPAN RUMAH ANTARA NO.6 & 8 JALAN SENTRAL 4, TAMAN BEHRANG CENTRAL, 35950 BEHRANG, PERAK.	8	11	
17	DP0017	ON POLE	HADAPAN RUMAH ANTARA NO.7 & 9 JALAN SENTRAL 2, TAMAN BEHRANG CENTRAL, 35950 BEHRANG, PERAK.	8	10	
18	DP0018	ON POLE	HADAPAN RUMAH ANTARA NO.7 & 9 JALAN SENTRAL 3, TAMAN BEHRANG CENTRAL, 35950 BEHRANG, PERAK.	8	10	
19	DP0019	ON POLE	HADAPAN RUMAH ANTARA NO.33 & 35 JALAN SENTRAL 3, TAMAN BEHRANG CENTRAL, 35950 BEHRANG, PERAK.	8	11	

3.2 New Pole details

No	POLE ID	Pole Type	GPS Coordinate
1	1	CONCRETE POLE 7.5M	3°44'44.56"N, 101°27'21.41"E
2	2	CONCRETE POLE 7.5M	3°44'43.76"N, 101°27'21.63"E
3	3	CONCRETE POLE 7.5M	3°44'42.94"N, 101°27'21.82"E
4	4	CONCRETE POLE 7.5M	3°44'42.11"N, 101°27'22.02"E
5	5	CONCRETE POLE 7.5M	3°44'41.30"N, 101°27'22.25"E
6	6	CONCRETE POLE 7.5M	3°44'40.48"N, 101°27'22.48"E
7	7	CONCRETE POLE 7.5M	3°44'39.68"N, 101°27'22.72"E
8	8	CONCRETE POLE 7.5M	3°44'38.85"N, 101°27'22.93"E
9	9	CONCRETE POLE 7.5M	3°44'38.03"N, 101°27'23.15"E
10	10	CONCRETE POLE 7.5M	3°44'37.20"N, 101°27'23.40"E
11	11	CONCRETE POLE 7.5M	3°44'36.38"N, 101°27'23.63"E
12	12	CONCRETE POLE 7.5M	3°44'35.52"N, 101°27'23.82"E
13	13	CONCRETE POLE 7.5M	3°44'34.70"N, 101°27'24.07"E
14	14	CONCRETE POLE 7.5M	3°44'33.88"N, 101°27'24.28"E
15	15	CONCRETE POLE 7.5M	3°44'32.90"N, 101°27'24.60"E
16	16	CONCRETE POLE 7.5M	3°44'32.17"N, 101°27'23.69"E
17	17	CONCRETE POLE 7.5M	3°44'31.55"N, 101°27'22.93"E
18	18	CONCRETE POLE 7.5M	3°44'30.92"N, 101°27'22.17"E

3.2 New Pole details

No	POLE ID	Pole Type	GPS Coordinate
19	19	CONCRETE POLE 7.5M	3°44'30.29"N, 101°27'21.41"E
20	20	CONCRETE POLE 7.5M	3°44'30.93"N, 101°27'20.74"E
21	21	CONCRETE POLE 7.5M	3°44'31.59"N 101°27'21.51"E
22	22	CONCRETE POLE 7.5M	3°44'32.27"N 101°27'22.27"E
23	23	CONCRETE POLE 7.5M	3°44'32.99"N 101°27'23.10"E
24	24	CONCRETE POLE 7.5M	3°44'33.51"N 101°27'23.66"E
25	25	CONCRETE POLE 7.5M	3°44'34.33"N 101°27'22.30"E
26	26	CONCRETE POLE 7.5M	3°44'33.53"N 101°27'21.61"E
27	27	CONCRETE POLE 7.5M	3°44'32.62"N 101°27'20.82"E
28	28	CONCRETE POLE 7.5M	3°44'31.87"N 101°27'20.13"E
29	29	CONCRETE POLE 7.5M	3°44'33.35"N 101°27'18.36"E
30	30	CONCRETE POLE 7.5M	3°44'34.12"N 101°27'19.10"E
31	31	CONCRETE POLE 7.5M	3°44'34.87"N 101°27'19.84"E
32	32	CONCRETE POLE 7.5M	3°44'35.48"N 101°27'20.44"E
33	33	CONCRETE POLE 7.5M	3°44'36.19"N 101°27'21.13"E
34	34	CONCRETE POLE 7.5M	3°44'36.94"N 101°27'21.87"E
35	35	CONCRETE POLE 7.5M	3°44'37.55"N 101°27'22.45"E
36	36	CONCRETE POLE 7.5M	3°44'38.67"N 101°27'22.24"E

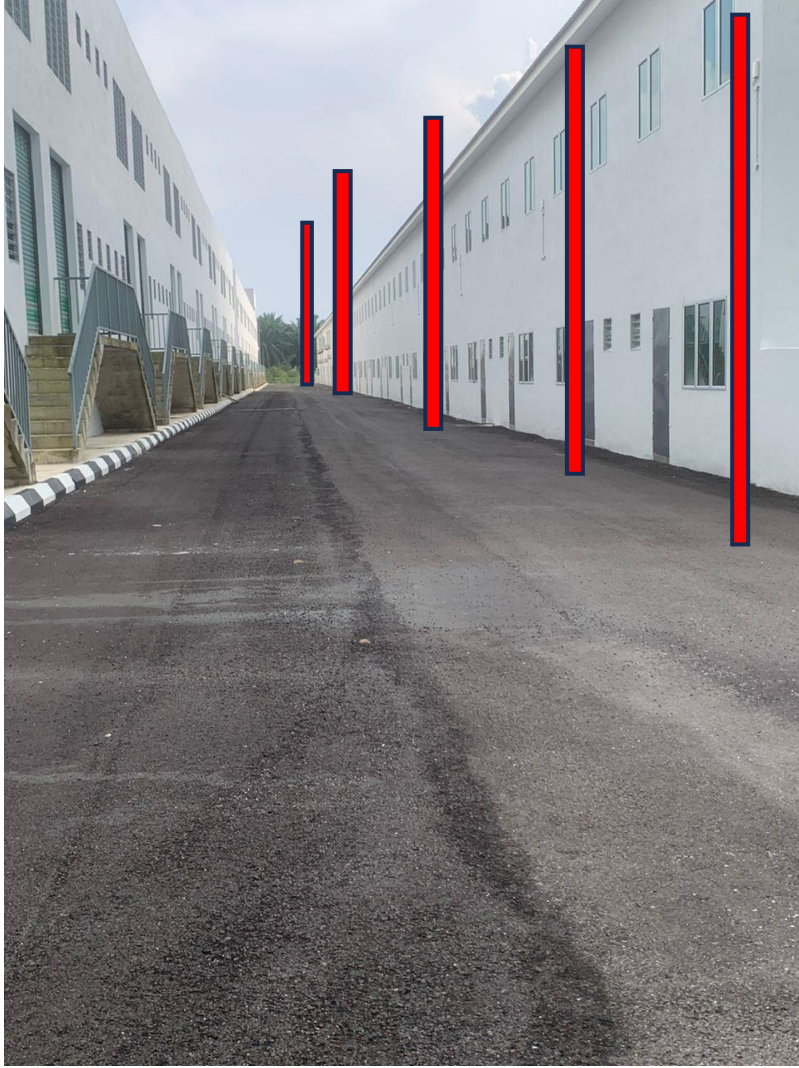
3.2 New Pole details

No	POLE ID	Pole Type	GPS Coordinate
37	37	CONCRETE POLE 7.5M	3°44'37.79"N 101°27'21.30"E
38	38	CONCRETE POLE 7.5M	3°44'36.69"N 101°27'20.13"E
39	39	CONCRETE POLE 7.5M	3°44'36.99"N 101°27'18.04"E
40	40	CONCRETE POLE 7.5M	3°44'37.76"N 101°27'18.93"E
41	41	CONCRETE POLE 7.5M	3°44'38.44"N 101°27'19.71"E
42	42	CONCRETE POLE 7.5M	3°44'39.10"N 101°27'20.47"E
43	43	CONCRETE POLE 7.5M	3°44'39.67"N 101°27'21.14"E
44	44	CONCRETE POLE 7.5M	3°44'40.22"N 101°27'21.76"E
45	45	CONCRETE POLE 7.5M	3°44'41.28"N 101°27'21.45"E
46	46	CONCRETE POLE 7.5M	3°44'42.17"N 101°27'21.18"E
47	47	CONCRETE POLE 7.5M	3°44'43.03"N 101°27'20.95"E
48	48	CONCRETE POLE 7.5M	3°44'43.94"N 101°27'20.67"E
49	49	CONCRETE POLE 7.5M	3°44'43.45"N 101°27'19.13"E
50	50	CONCRETE POLE 7.5M	3°44'42.47"N 101°27'19.47"E
51	51	CONCRETE POLE 7.5M	3°44'41.48"N 101°27'19.82"E
52	52	CONCRETE POLE 7.5M	3°44'40.64"N 101°27'20.10"E
53	53	CONCRETE POLE 7.5M	3°44'40.00"N 101°27'19.45"E
54	54	CONCRETE POLE 7.5M	3°44'39.31"N 101°27'18.71"E

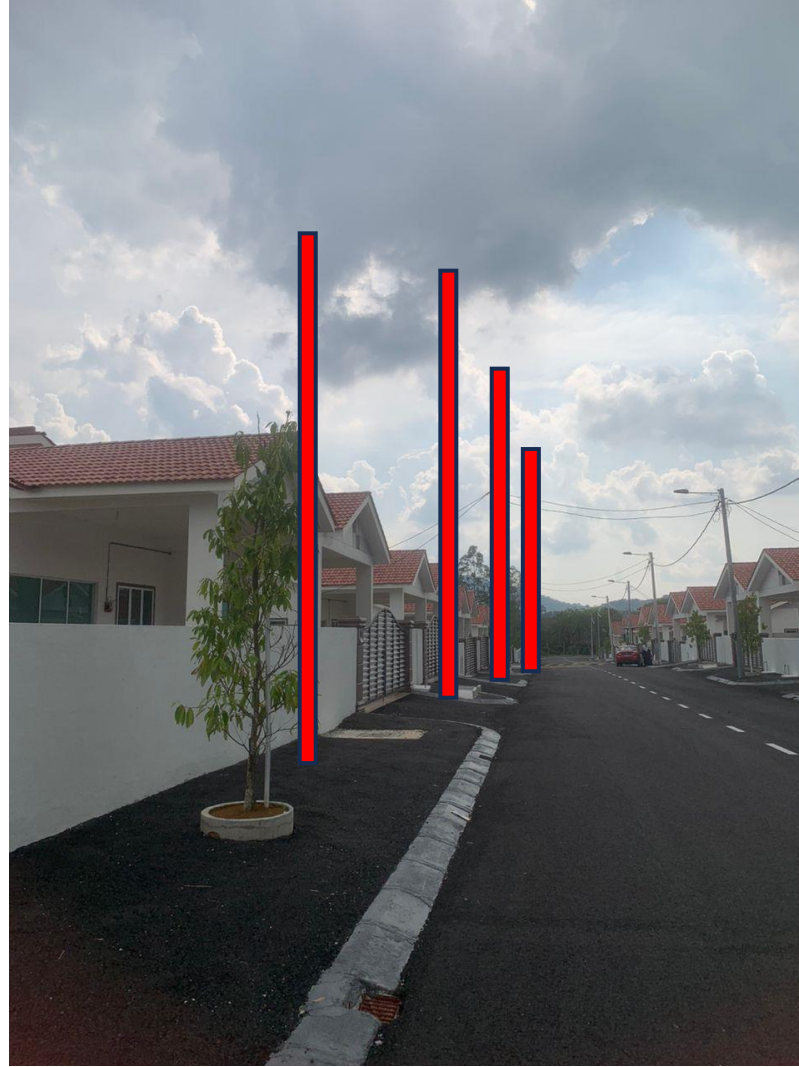
3.2 New Pole details

No	POLE ID	Pole Type	GPS Coordinate
55	55	CONCRETE POLE 7.5M	3°44'38.67"N 101°27'18.03"E
56	56	CONCRETE POLE 7.5M	3°44'37.92"N 101°27'17.25"E

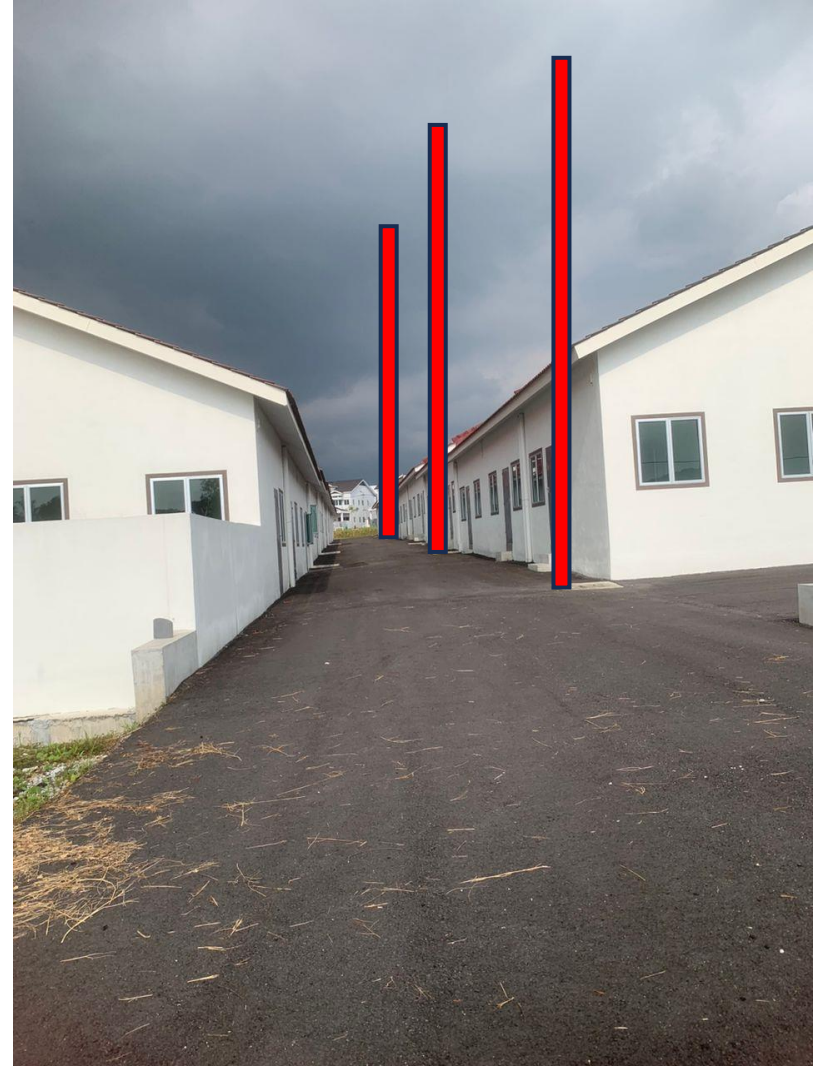
3.3 New Pole Illustration



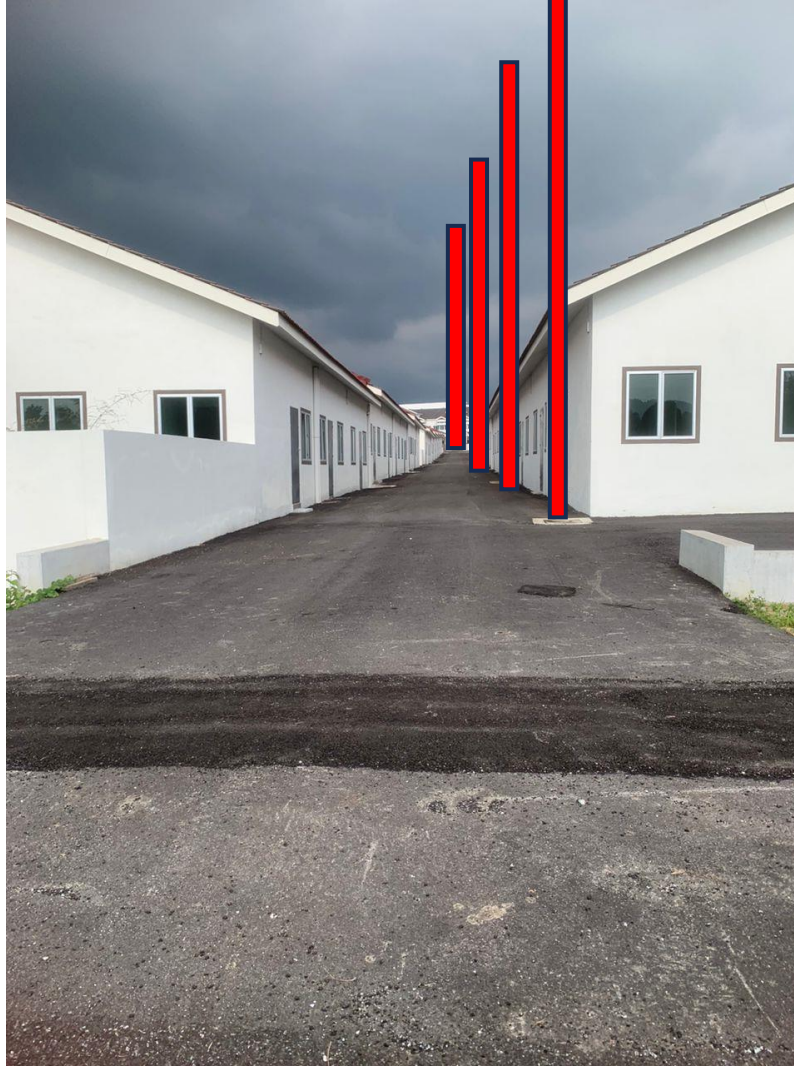
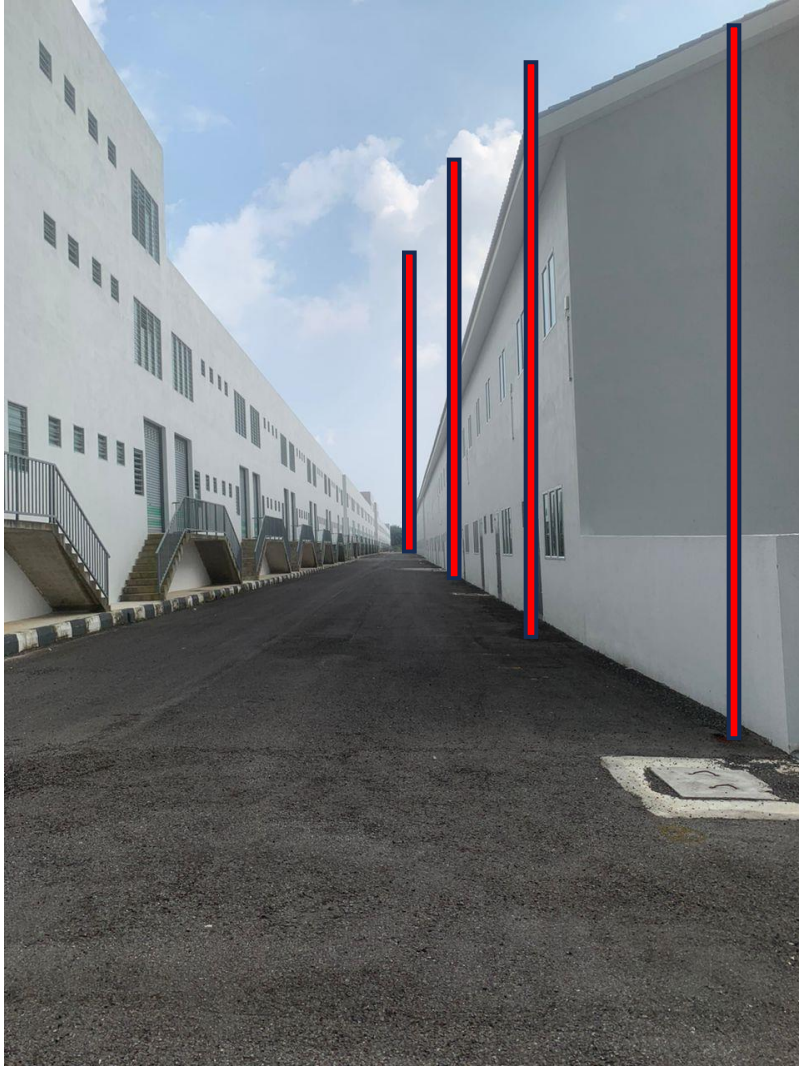
3.3 New Pole Illustration



3.3 New Pole Illustration



3.3 New Pole Illustration



4.1

BIL OF QUANTITY - BOQ

Contract NO	3400038552
Vendor No	1010539
Project No	TMNA/241976
Region	NORTHERN
Exchange	BHG
BOQ Date	06 JAN 2025
LOR ID	PRK-EVE-2430851-TP



BOQ Prepared by:	MUHAMAD NUR ZULKARNAIN
Company Name:	EVERTRONICS (M) SDN BHD
Date:	06 JAN 2025
BOQ Revision:	0

No	PU ID	PU DESC	RATE	REQ QUANTITY	TOTAL
1	908057	CPP SURU UP TO 152 PORT (CNC LITE)	213.00	152	32,376.00
2	108728	INSTALLATION OF POLE WITH ACCESSORIES	96.40	52	5,012.80
3	112010	INSTALLATION OF POLE LESS THAN 4 POLES	294.50	4	1,178.00
4	108269	CUT/REMOVE ASPHALT/CON SURFACE 750mm WID	25.83	18	464.94
5	108536	MILLING THE ROAD & PREMIX M2	66.98	6	401.88
6	108275	SCRAPE EXISTING ROAD SURFACE	11.04	6	66.24
TOTAL COST					39,499.86

4.2

BOM

No	Items	Unit	Quantity	Total
1	CABLE OFC 4C LOOSE IB	M	2240	2240
2	CABLE OFC 36C LOOSE U/G	M	1100	1100
3	CLOSURE JOINTING OFC 36C U/G	PCS	4	4
4	FIBER DP AERIAL CW SP 1X1:8	PCS	19	19
5	CLAMP IB NO.2	EA	19	19
6	HOOK CLAMP IB NO.2A	EA	19	19
7	POLE CONCRETE 7.5M	EA	56	56
8	CLAMP POLE-HEAD RING (POLE CONCRETE)	EA	56	56
9	CLAMP POLE CONCRETE	EA	56	56
10	TIE CABLE STAINLESS STEEL 7MM X 335 MM (aka JUBLEE CLIP)	EA	92	92
11	TIE CABLE STAINLESS STEEL 7MM x 490MM	EA	92	92
12	PIPE GI 25MM X 4M C/W COUPLING	EA	9	9
13	GRIP PREFORMED 7/1.6	EA	47	47
14	THIMBLE OPEN SMALL	PCS	6	6

END OF TECHNICAL PROPOSAL