

TECHNICAL PROPOSAL

POP2 ABDB009 SEKOLAH JENIS KEBANGSAAN TAMIL LADANG KUALA BERNAM (D-SIDE)

Company Name : KNZ ENGINEERING SDN BHD.
Company Address : NO 60 & 60 A JALAN KLEBANG INDAH 1 MEDAN KLEBANG INDAH 30010 IPOH PERAK
Prepared By : FARHAH AFIQAH BINTI AMDON
Date : 29/11/2024



Starting Point

Site / Boundary Name : Sungai Sumun
 Address : SJKT Ladang Kuala Bernam, 36300 Sungai Sumun
 District : Hilir Perak
 Postcode : 36300
 State : Perak
 GPS Coordinate : 3.90223383, 100.8370711
 LRD : A

End Point

Site / Boundary Name : Sungai Sumun
 Address : Jalan Simpang Empat – Bagan Datuk, 36300 Sungai Sumun
 District : Hilir Perak
 Postcode : 36300
 State : Perak
 GPS Coordinate : 3.890097874, 100.826513
 LRD : B



PROJEK PENYEDIAAN DAN PENYELENGGARAAN POINT OF PRESENCE (POP) FASA 2: HAB INFRASTRUKTUR GENTIAN OPTIK BERHAMPIRAN DENGAN SEKOLAH, KAWASAN PERINDUSTRIAN, PREMIS KERAJAAN DAN KOMUNITI SEKITARNYA OLEH KEMENTERIAN KOMUNIKASI MALAYSIA – ZON UTARA (KKMM.400-11/17/132(1))



1.0 WORK SUMMARY

NO	PROPOSED DISTANCE AND METHOD	UNIT	QUANTITY
1	Horizontal Directional Drilling (HDD)	m	0
2	Carriage Way Open Trench (CW)	m	0
3	Grass Verge Open Trenching (GV)	m	0
4	Micro Trenching (MT)	m	0
Total			0

NO	OTHER INFORMATION	UNIT	QUANTITY
1	Installation of Short Span ADSS Fibre Cables	m	6,201m
2	Install New Pole	ea	142
3	Install New JRC7 Manhole	ea	0
4	Install GI Riser 100mm	ea	0
5	Install Fiber Distribution Point	ea	13
6	Install Closure	ea	4
7	Estimated Time Required for Completion	days	30

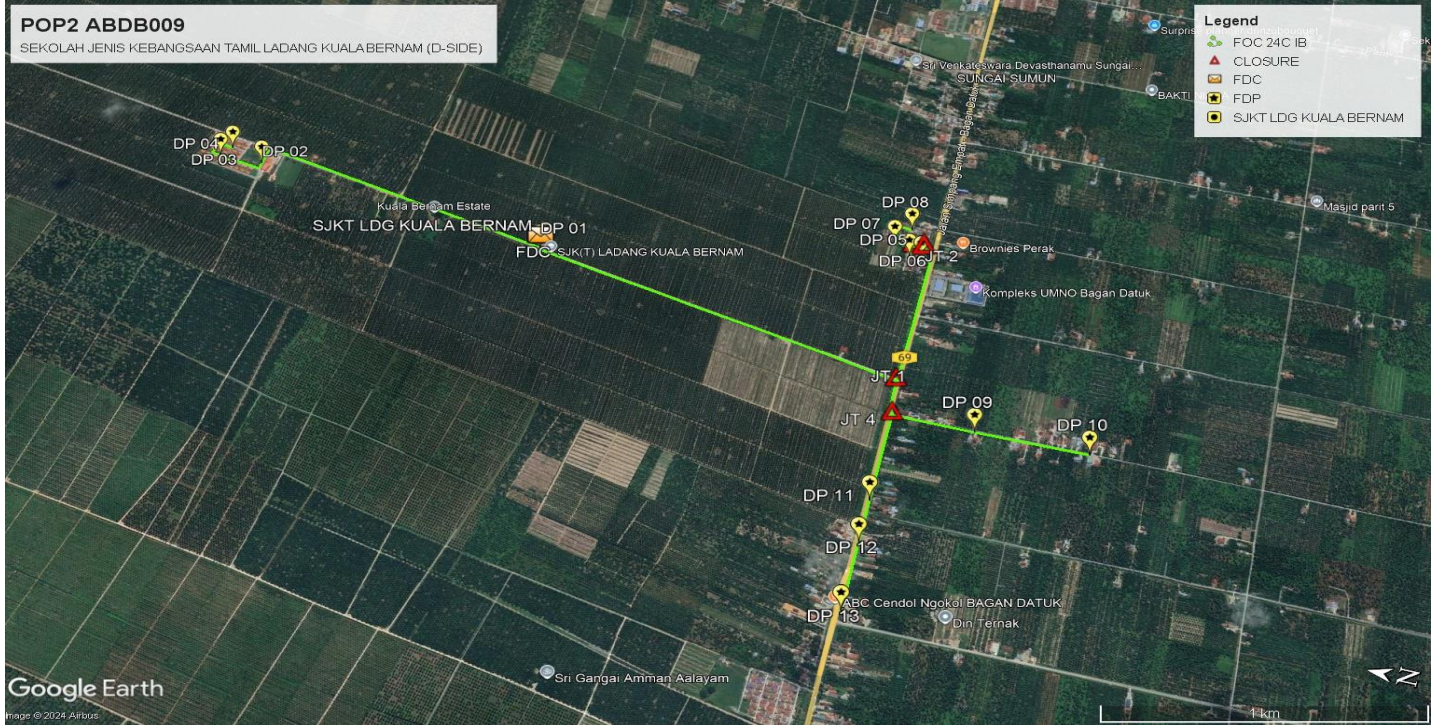
2.0 LOCAL AUTHORITY SUMMARY

Daerah Hilir Perak

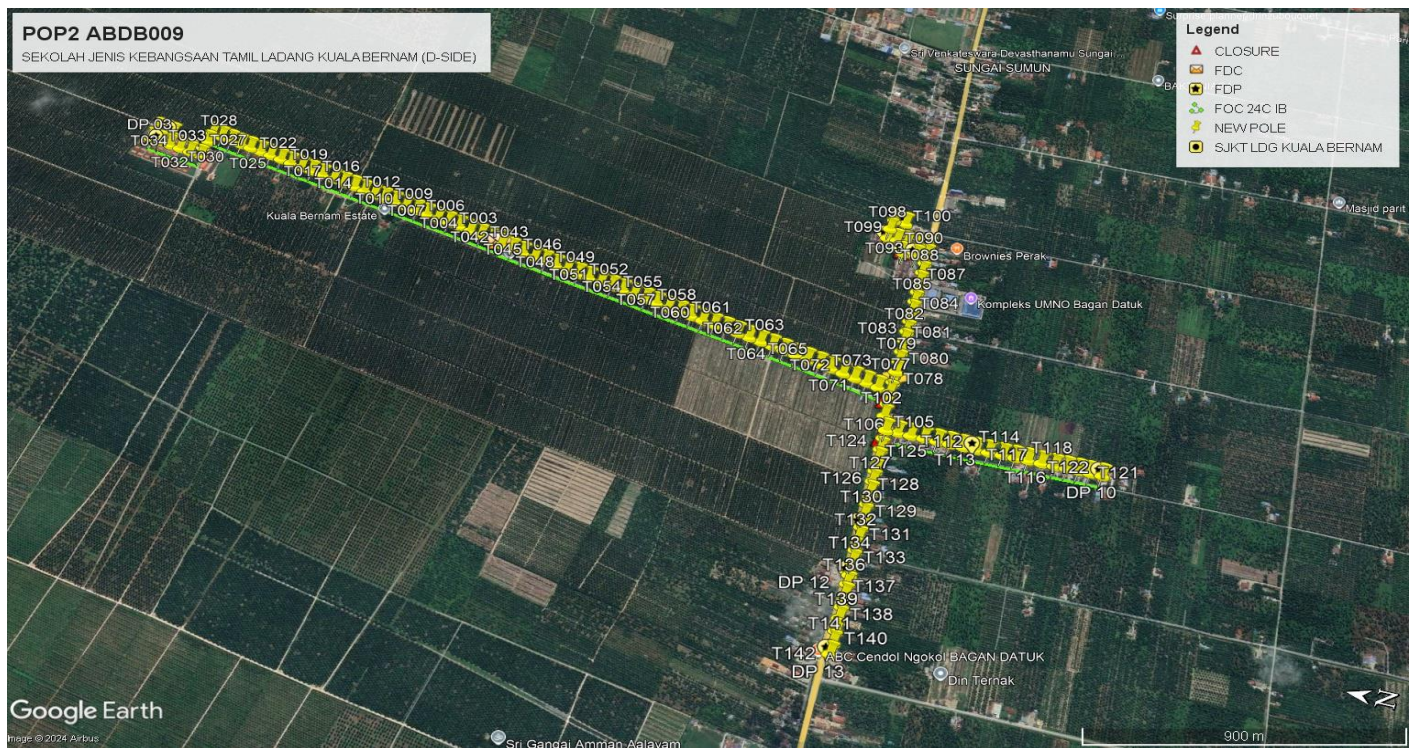
Bil	Items	Owner	Quantity	Distance
1	HDD	JKR	-	-
		Majlis	-	-
		Estate / Private Land	-	-
2	New Pole	JKR	41	1,509m
		Majlis	26	1,015m
		Estate / Private Land	75	2,850m
3	Existing TNB Pole	JKR	-	-
		Majlis	-	-
		Estate / Private Land	-	-
Total				5,374m

Site Plan -KMZ (Overview site area)

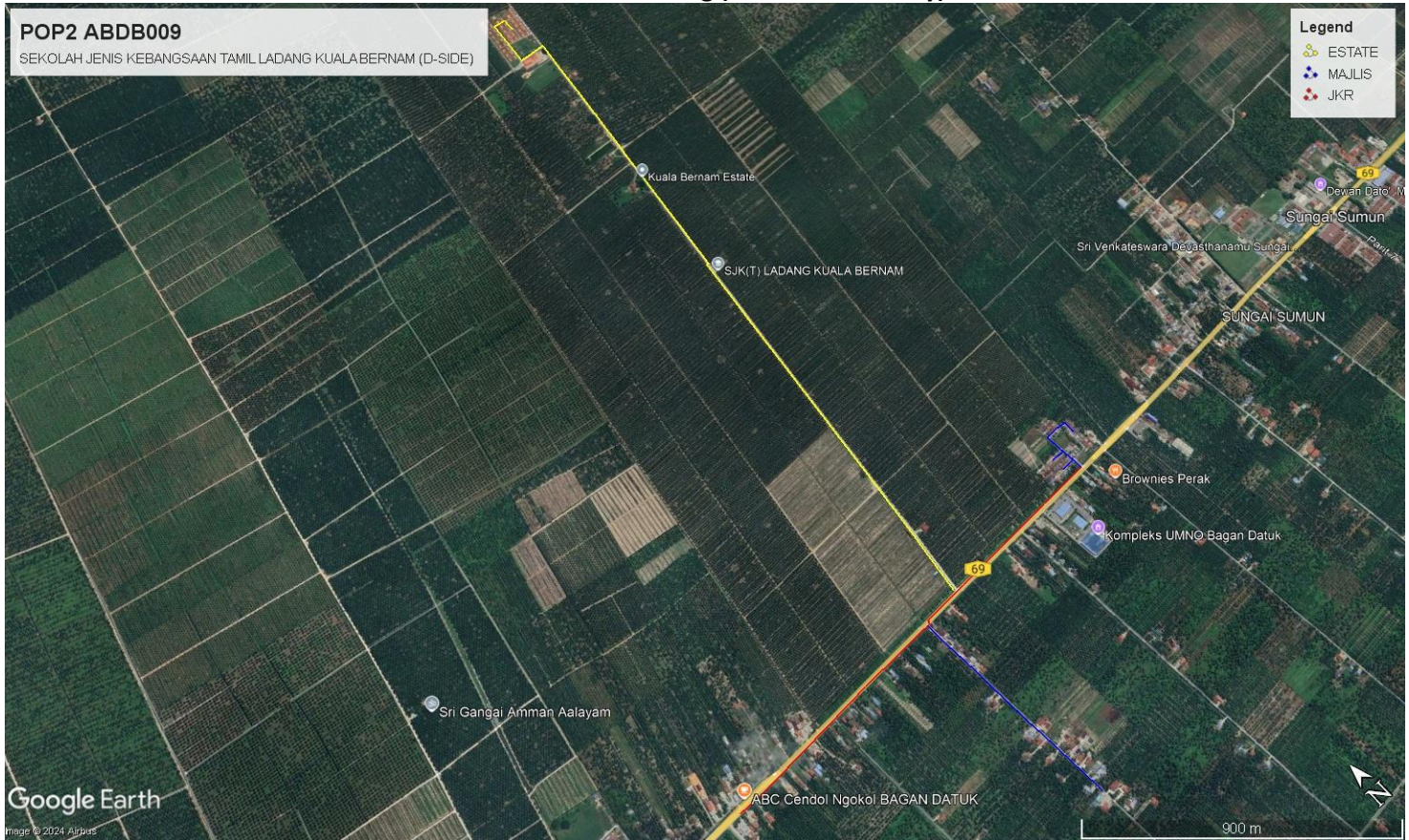
Proposed FDP and Closure



Proposed New Pole



Site Plan - KMZ Routing (All Local Authority)



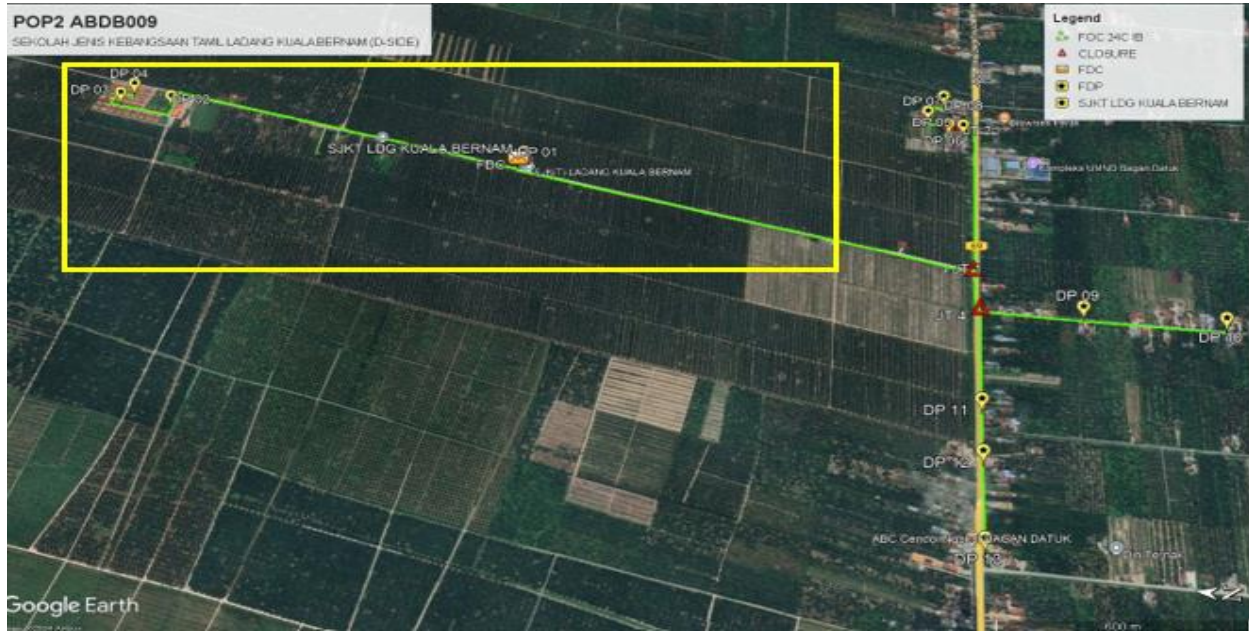
Red Colour – JKR Road

Blue Colour - Majlis Road

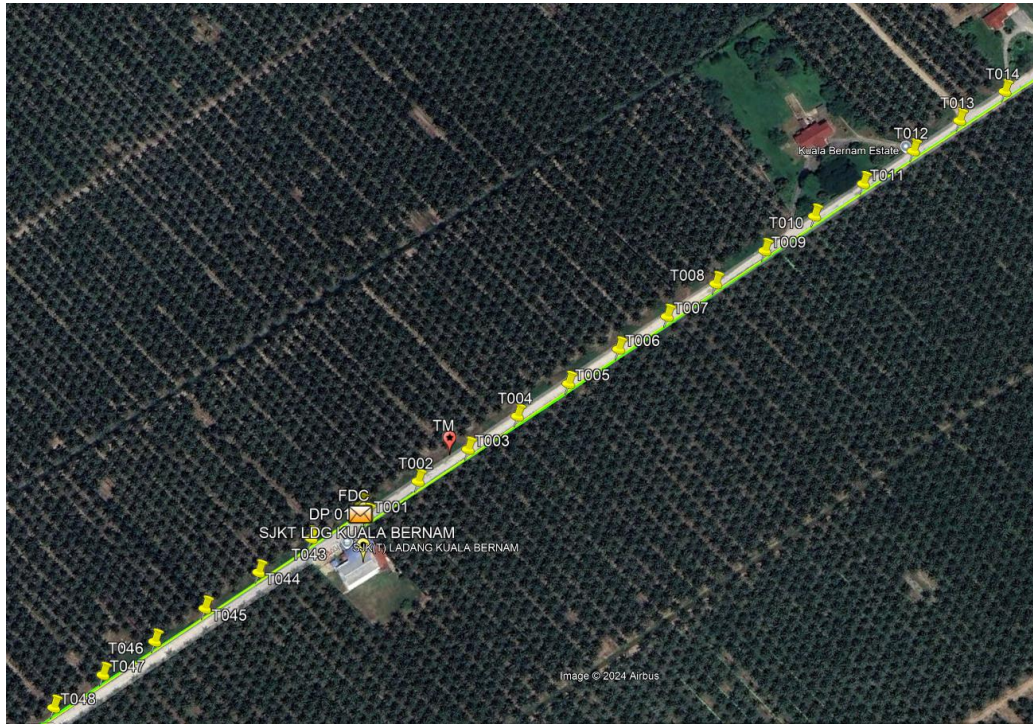
Yellow Colour-Estate Road (UPB)

Site Plan – KMZ Routing (All site area)

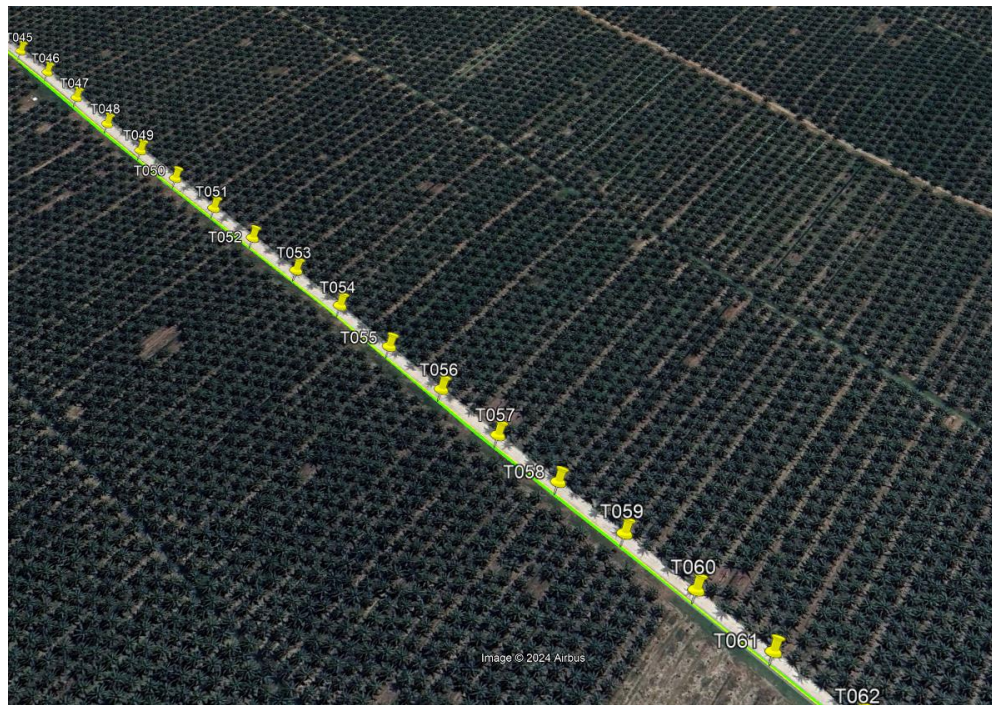
Route 1



Route 1.1

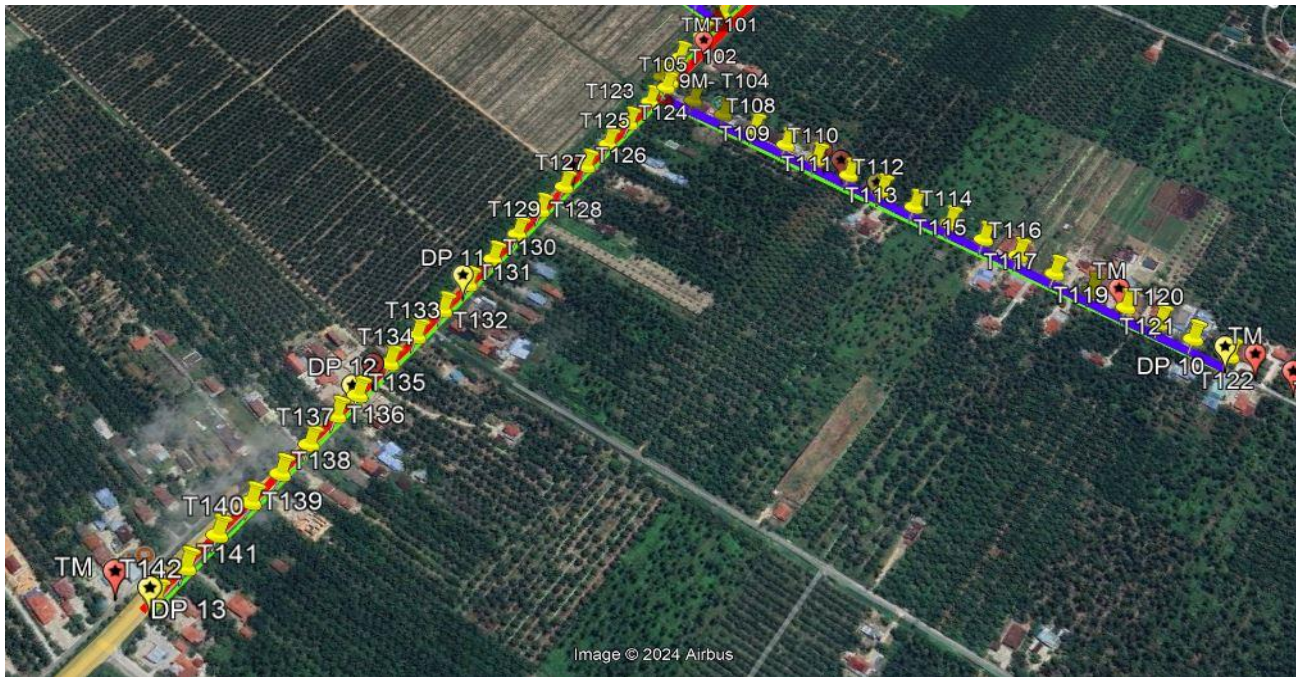
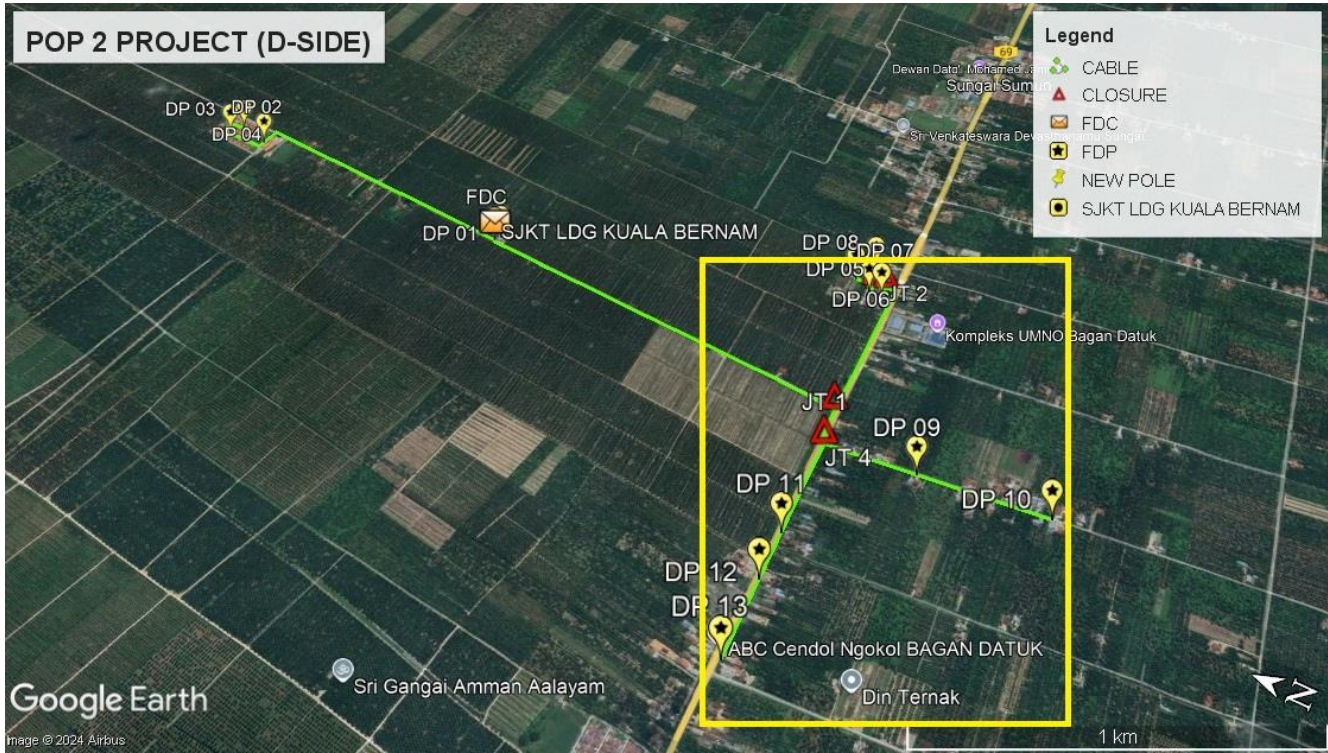


Route 1.2

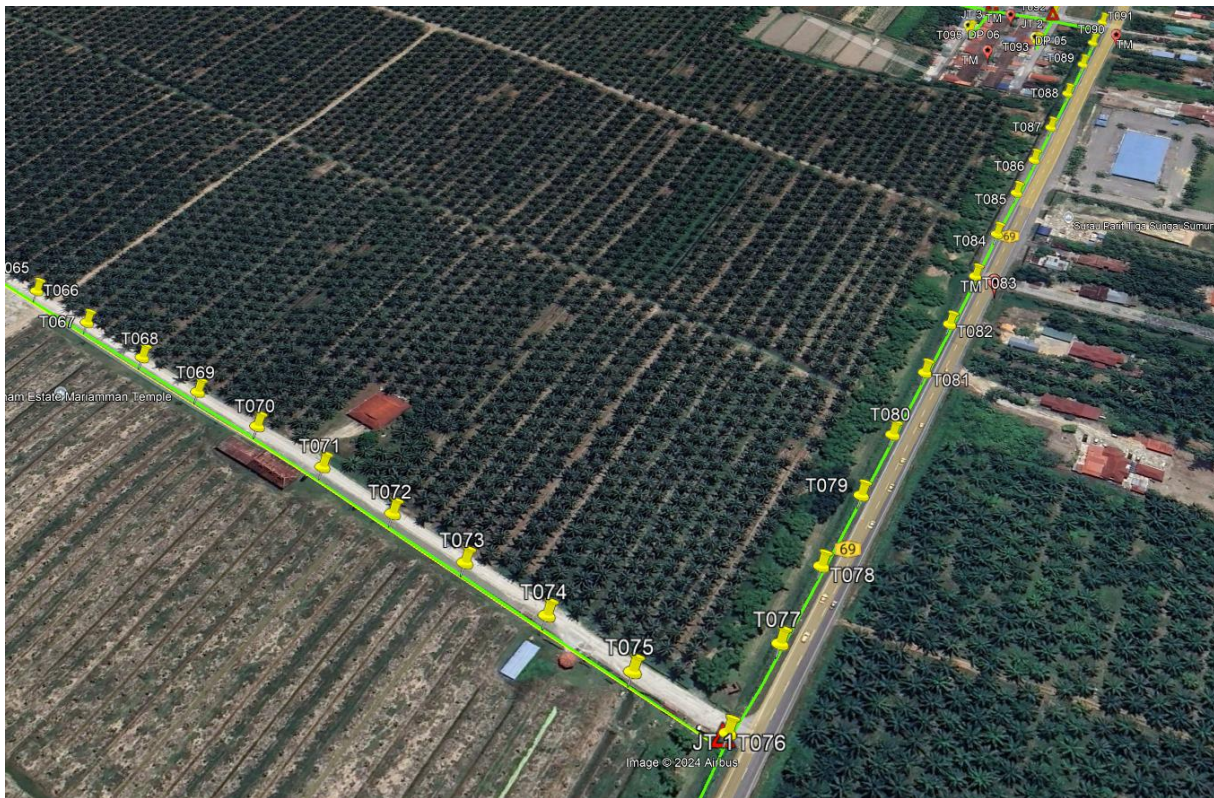


Route 1.3

Route 2



Route 2.1



Route 2.2

3.0 PROPOSED NEW POLE

Proposed New Pole Coordinate					
No.	Pole Number	Distance (m)	Latitude	Longitude	Local Authority
1	T001	40	3.90223383	100.8370711	United Plantation Berhad
2	T002	40	3.902593413	100.8371348	United Plantation Berhad
3	T003	40	3.902940257	100.8372048	United Plantation Berhad
4	T004	40	3.903290452	100.8372669	United Plantation Berhad
5	T005	40	3.903647689	100.8373406	United Plantation Berhad
6	T006	40	3.904008949	100.837402	United Plantation Berhad
7	T007	40	3.904357469	100.8374644	United Plantation Berhad
8	T008	40	3.904707832	100.8375257	United Plantation Berhad
9	T009	40	3.905061046	100.8375894	United Plantation Berhad
10	T010	40	3.905423982	100.8376491	United Plantation Berhad
11	T011	40	3.905777195	100.8377141	United Plantation Berhad
12	T012	40	3.906139461	100.8377832	United Plantation Berhad
13	T013	40	3.906485299	100.8378469	United Plantation Berhad
14	T014	40	3.906818395	100.8379133	United Plantation Berhad
15	T015	40	3.907161886	100.8379857	United Plantation Berhad
16	T016	40	3.907512585	100.8380454	United Plantation Berhad
17	T017	40	3.907853728	100.8381101	United Plantation Berhad
18	T018	40	3.908225046	100.8381735	United Plantation Berhad
19	T019	40	3.908607597	100.8382429	United Plantation Berhad
20	T020	40	3.908957792	100.8383049	United Plantation Berhad
21	T021	40	3.909315029	100.8383696	United Plantation Berhad
22	T022	40	3.909664722	100.838438	United Plantation Berhad
23	T023	40	3.910025312	100.8385007	United Plantation Berhad
24	T024	40	3.910366455	100.8385661	United Plantation Berhad
25	T025	40	3.910724362	100.8386331	United Plantation Berhad
26	T026	40	3.911049748	100.8386871	United Plantation Berhad

3.0 PROPOSED NEW POLE

Proposed New Pole Coordinate					
No.	Pole Number	Distance (m)	Latitude	Longitude	Local Authority
27	T027	40	3.911396423	100.8387515	United Plantation Berhad
28	T028	40	3.91172315	100.8388132	United Plantation Berhad
29	T029	40	3.912038309	100.8388718	United Plantation Berhad
30	T030	40	3.912042333	100.8385419	United Plantation Berhad
31	T031	40	3.91204753	100.8381999	United Plantation Berhad
32	T032	40	3.912058594	100.8379602	United Plantation Berhad
33	T033	40	3.912426559	100.8380169	United Plantation Berhad
34	T034	40	3.912777426	100.8380735	United Plantation Berhad
35	T035	40	3.913119743	100.8381222	United Plantation Berhad
36	T036	40	3.913480164	100.8381805	United Plantation Berhad
37	T037	40	3.91379063	100.8382264	United Plantation Berhad
38	T038	40	3.913744865	100.8384668	United Plantation Berhad
39	T039	40	3.913706644	100.8386526	United Plantation Berhad
40	T040	40	3.913438087	100.83862	United Plantation Berhad
41	T041	40	3.913212949	100.8385771	United Plantation Berhad
42	T042	40	3.902248917	100.837	United Plantation Berhad
43	T043	40	3.901901906	100.8369366	United Plantation Berhad
44	T044	40	3.901541652	100.8368655	United Plantation Berhad
45	T045	40	3.901171843	100.8368012	United Plantation Berhad
46	T046	40	3.90082919	100.8367368	United Plantation Berhad
47	T047	40	3.900473965	100.8366654	United Plantation Berhad
48	T048	40	3.900129804	100.8366017	United Plantation Berhad
49	T049	40	3.899773574	100.8365366	United Plantation Berhad
50	T050	40	3.899423042	100.8364746	United Plantation Berhad
51	T051	40	3.899055747	100.8364092	United Plantation Berhad
52	T052	40	3.898713263	100.8363499	United Plantation Berhad
53	T053	40	3.89835502	100.8362912	United Plantation Berhad

3.0 PROPOSED NEW POLE

Proposed New Pole Coordinate					
No.	Pole Number	Distance (m)	Latitude	Longitude	Local Authority
54	T054	40	3.898009351	100.8362262	United Plantation Berhad
55	T055	40	3.897652114	100.8361618	United Plantation Berhad
56	T056	40	3.897296889	100.8360958	United Plantation Berhad
57	T057	40	3.896939317	100.83603	United Plantation Berhad
58	T058	40	3.896589121	100.8359694	United Plantation Berhad
59	T059	40	3.896233561	100.835908	United Plantation Berhad
60	T060	40	3.895879677	100.8358466	United Plantation Berhad
61	T061	40	3.895528475	100.835785	United Plantation Berhad
62	T062	40	3.895170903	100.8357273	United Plantation Berhad
63	T063	40	3.894818192	100.8356646	United Plantation Berhad
64	T064	40	3.89446062	100.8355989	United Plantation Berhad
65	T065	40	3.894110424	100.8355362	United Plantation Berhad
66	T066	40	3.893752517	100.8354698	United Plantation Berhad
67	T067	40	3.893401651	100.8354044	United Plantation Berhad
68	T068	40	3.893041061	100.835338	United Plantation Berhad
69	T069	40	3.892693883	100.8352716	United Plantation Berhad
70	T070	40	3.892337987	100.8352029	United Plantation Berhad
71	T071	40	3.891978739	100.8351302	United Plantation Berhad
72	T072	40	3.891625358	100.8350584	United Plantation Berhad
73	T073	40	3.891282538	100.8349843	United Plantation Berhad
74	T074	40	3.890927313	100.8349142	United Plantation Berhad
75	T075	40	3.890581811	100.8348422	United Plantation Berhad
76	T076	40	3.890230944	100.8347731	JKR Hilir Perak
77	T077	40	3.890209487	100.8351295	JKR Hilir Perak
78	T078	40	3.890205128	100.8354902	JKR Hilir Perak
79	T079	40	3.890192723	100.8358621	JKR Hilir Perak
80	T080	40	3.89018937	100.8362104	JKR Hilir Perak
81	T081	40	3.890183335	100.8366007	JKR Hilir Perak
82	T082	40	3.890178641	100.8369316	JKR Hilir Perak
83	T083	40	3.890170427	100.8372994	JKR Hilir Perak
84	T084	40	3.890166404	100.8376481	JKR Hilir Perak

3.0 PROPOSED NEW POLE

Proposed New Pole Coordinate					
No.	Pole Number	Distance (m)	Latitude	Longitude	Local Authority
85	T085	40	3.89016808	100.8380202	JKR Hilir Perak
86	T086	40	3.890164727	100.8383746	JKR Hilir Perak
87	T087	40	3.89016171	100.8387297	JKR Hilir Perak
88	T088	40	3.890157687	100.8390965	JKR Hilir Perak
89	T089	40	3.890150646	100.8394418	JKR Hilir Perak
90	T090	40	3.890153999	100.8397432	JKR Hilir Perak
91	T091	40	3.890158357	100.8400591	JKR Hilir Perak
92	T092	40	3.890444683	100.8400701	Majlis Perbandaran Teluk Intan
93	T093	40	3.890444683	100.8396363	Majlis Perbandaran Teluk Intan
94	T094	40	3.890797896	100.8400587	Majlis Perbandaran Teluk Intan
95	T095	40	3.890832933	100.8396453	Majlis Perbandaran Teluk Intan
96	T096	40	3.89109931	100.8400684	Majlis Perbandaran Teluk Intan
97	T097	40	3.891390329	100.8400825	Majlis Perbandaran Teluk Intan
98	T098	40	3.891382618	100.8404436	Majlis Perbandaran Teluk Intan
99	T099	40	3.891323777	100.8407916	Majlis Perbandaran Teluk Intan
100	T100	40	3.890970228	100.840737	Majlis Perbandaran Teluk Intan
101	T101	40	3.890223568	100.8343785	JKR Hilir Perak
102	T102	40	3.890220551	100.8339654	JKR Hilir Perak
103	T103	40	3.890210157	100.8336181	JKR Hilir Perak
104	T104	40	3.890098175	100.8336073	JKR Hilir Perak
105	T105	40	3.890086319	100.8335196	JKR Hilir Perak
106	T106	40	3.889755523	100.8335192	Majlis Perbandaran Teluk Intan
107	T107	40	3.889391581	100.8335135	Majlis Perbandaran Teluk Intan
108	T108	40	3.889027303	100.8335078	Majlis Perbandaran Teluk Intan
109	T109	40	3.888657996	100.8335057	Majlis Perbandaran Teluk Intan
110	T110	40	3.888308471	100.8335047	Majlis Perbandaran Teluk Intan
111	T111	40	3.887944864	100.8335007	Majlis Perbandaran Teluk Intan

3.0 PROPOSED NEW POLE

Proposed New Pole Coordinate					
No.	Pole Number	Distance (m)	Latitude	Longitude	Local Authority
112	T112	40	3.887584275	100.8335	Majlis Perbandaran Teluk Intan
113	T113	40	3.887235755	100.8335054	Majlis Perbandaran Teluk Intan
114	T114	40	3.886861084	100.8335151	Majlis Perbandaran Teluk Intan
115	T115	40	3.886511223	100.8335178	Majlis Perbandaran Teluk Intan
116	T116	40	3.886158681	100.8335259	Majlis Perbandaran Teluk Intan
117	T117	40	3.885791386	100.8335245	Majlis Perbandaran Teluk Intan
118	T118	40	3.885427108	100.8335299	Majlis Perbandaran Teluk Intan
119	T119	40	3.885097867	100.8335342	Majlis Perbandaran Teluk Intan
120	T120	40	3.884777175	100.8335416	Majlis Perbandaran Teluk Intan
121	T121	40	3.884465033	100.8335433	Majlis Perbandaran Teluk Intan
122	T122	40	3.884130931	100.833547	Majlis Perbandaran Teluk Intan
123	T123	40	3.890101025	100.8332563	JKR Hilir Perak
124	T124	40	3.890098175	100.8328872	JKR Hilir Perak
125	T125	40	3.890100019	100.8325365	JKR Hilir Perak
126	T126	40	3.890097169	100.8321707	JKR Hilir Perak
127	T127	40	3.890101695	100.831826	JKR Hilir Perak
128	T128	40	3.89009784	100.8314488	JKR Hilir Perak
129	T129	40	3.890098846	100.8310991	JKR Hilir Perak
130	T130	40	3.890099516	100.8307323	JKR Hilir Perak
131	T131	40	3.890099181	100.8303686	JKR Hilir Perak
132	T132	40	3.890096834	100.8300118	JKR Hilir Perak
133	T133	40	3.890099684	100.8296474	JKR Hilir Perak
134	T134	40	3.890099684	100.8292863	JKR Hilir Perak
135	T135	40	3.890094822	100.8288729	JKR Hilir Perak
136	T136	40	3.89010136	100.8286074	JKR Hilir Perak
137	T137	40	3.890090142	100.8282616	JKR Hilir Perak
138	T138	40	3.890089022	100.8279132	JKR Hilir Perak



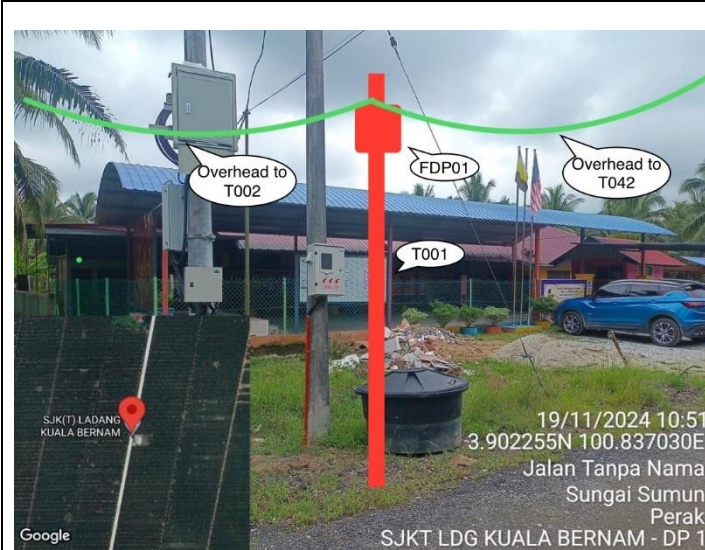
PROJEK PENYEDIAAN DAN PENYELENGGARAAN POINT OF PRESENCE (POP) FASA 2: HAB INFRASTRUKTUR GENTIAN OPTIK BERHAMPIRAN DENGAN SEKOLAH, KAWASAN PERINDUSTRIAN, PREMIS KERAJAAN DAN KOMUNITI SEKITARNYA OLEH KEMENTERIAN KOMUNIKASI MALAYSIA – ZON UTARA (KKMM.400-11/17/132(1))



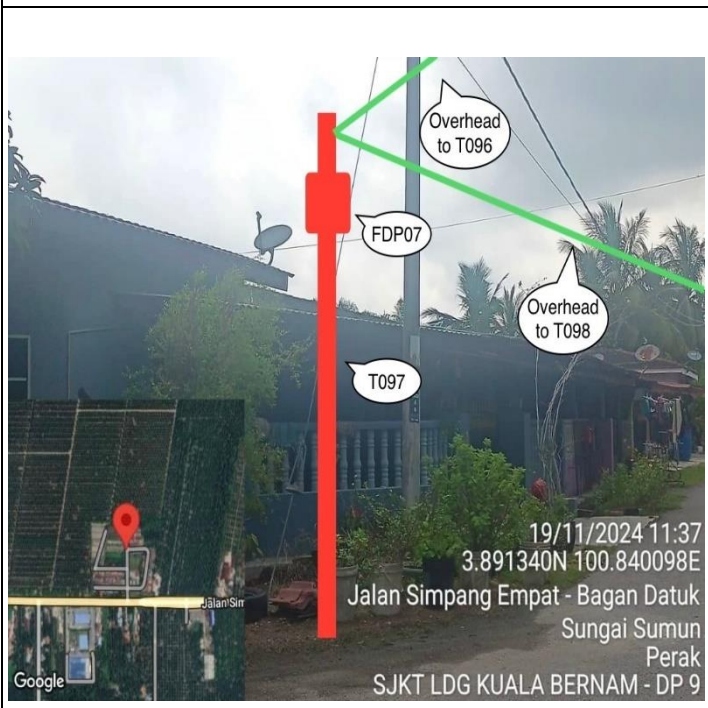
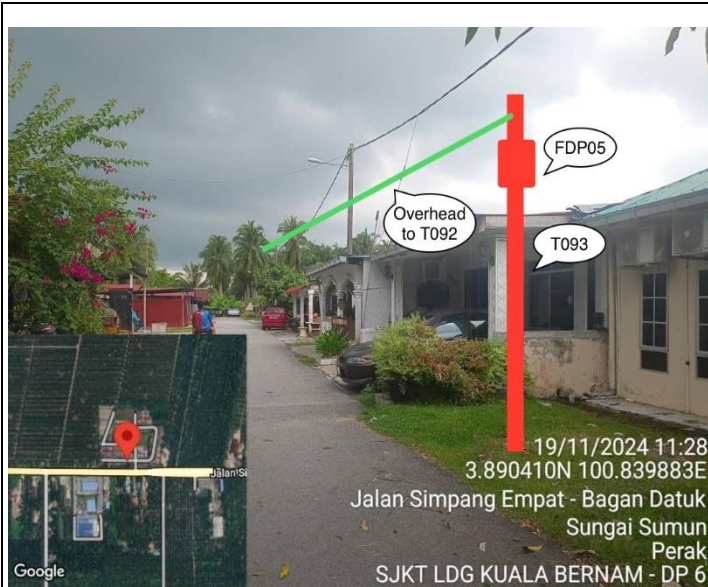
3.0 PROPOSED NEW POLE

Proposed New Pole Coordinate					
No.	Pole Number	Distance (m)	Latitude	Longitude	Local Authority
139	T139	40	3.890089529	100.8275722	JKR Hilir Perak
140	T140	40	3.890089669	100.8271963	JKR Hilir Perak
141	T141	40	3.890093268	100.8268406	JKR Hilir Perak
142	T142	40	3.890097874	100.826513	JKR Hilir Perak

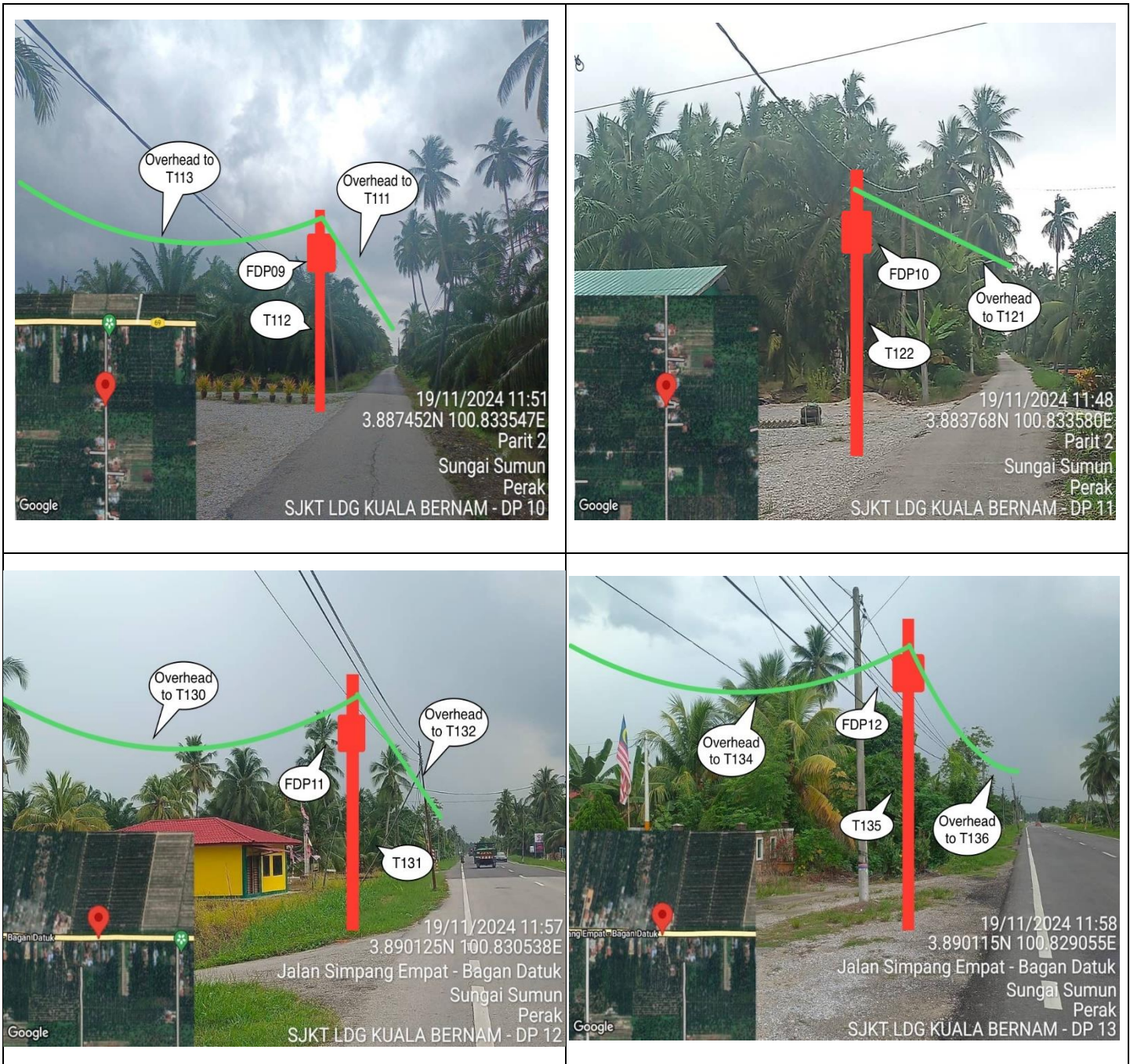
4.0 SITE PHOTOS - PROPOSED NEW POLE



4.0 SITE PHOTOS - PROPOSED NEW POLE



4.0 SITE PHOTOS - PROPOSED NEW POLE



4.0 SITE PHOTOS - PROPOSED NEW POLE



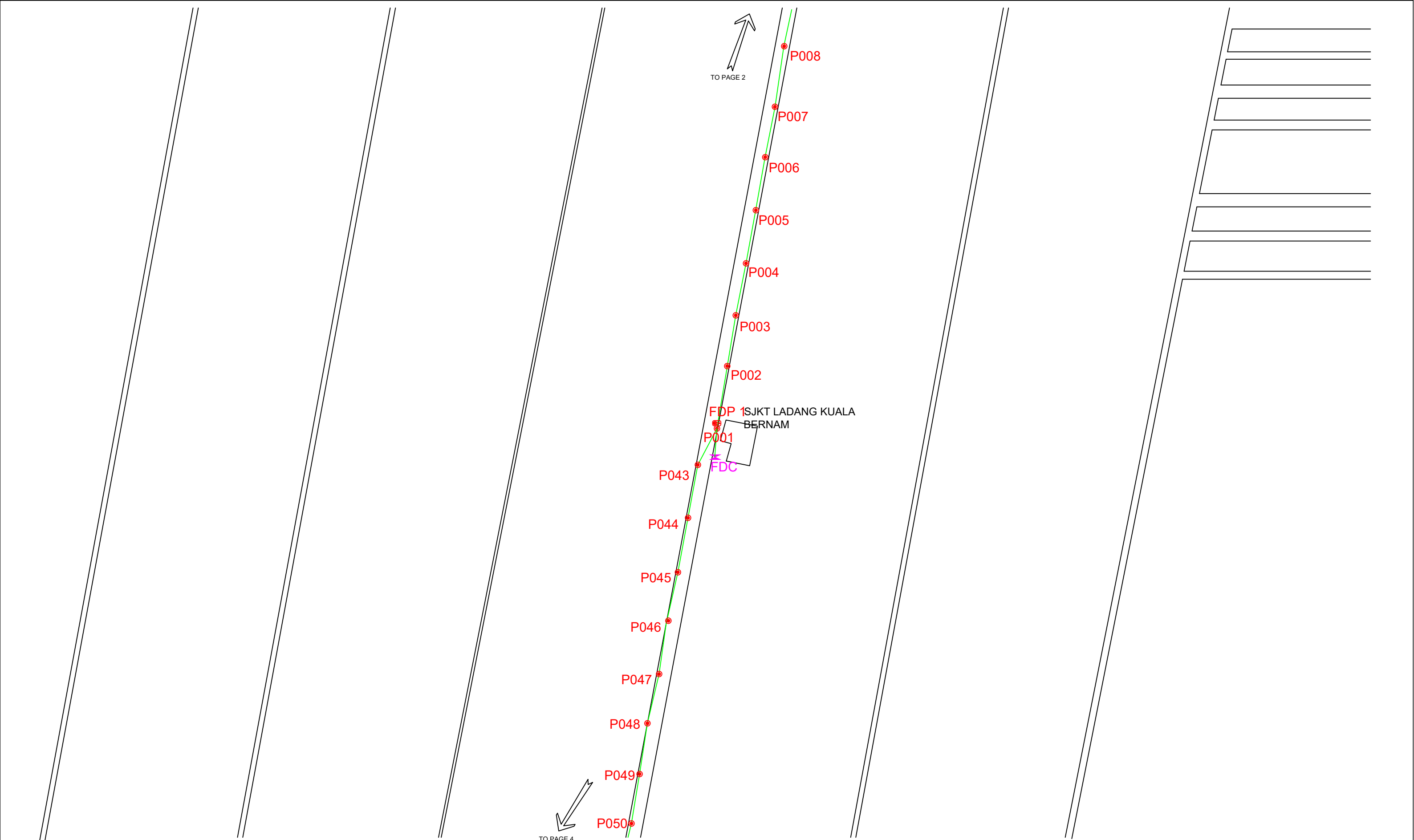


PROJEK PENYEDIAAN DAN PENYELENGGARAAN POINT OF PRESENCE (POP) FASA 2: HAB INFRASTRUKTUR GENTIAN OPTIK BERHAMPIRAN DENGAN SEKOLAH, KAWASAN PERINDUSTRIAN, PREMIS KERAJAAN DAN KOMUNITI SEKITARNYA OLEH KEMENTERIAN KOMUNIKASI MALAYSIA – ZON UTARA (KKMM.400-11/17/132(1))



5.0 3rd PARTIES DEPENDENCIES

NO	LOCAL COUNCIL / AUTHORITY	REMARK
1	Majlis Perbandaran Teluk Intan	1,015M
2	JKR Hilir Perak	1,509M
3	UNITED PLANTATION BHD	2,850M



LEGEND		NEW MANHOLE		TENSION SMALL / TENSION BIG		MH NO.	
12C FOC	Installed 1:4 splitter in FDC	CG1	NEW MANHOLE	TS / TB	TENSION SMALL / TENSION BIG	MH1	MH NO.
24C FDC	FDP	#	HOUSE NUMBER	□	EXISTING MANHOLE	TKS-1	EXISTING TNB POLE NO.
48C FOC	CLOSURE	●	EXISTING ALLO POLE	CP1	CLOSURE NO.	P001	NEW POLE NO.
90C FOC	NEW MANHOLE (PT)	SS	LOOP	FDP1	FDP NO.	SEE A.A. IN THIS DRAWING	
144C FOC	INSTALLED POLE	SS	FDP BOUNDARY	FDC	FDC NO.	SEE SHEET XXX	
		○				⊕	
		○				⊕	

KEY PLAN

PROJECT OWNER



KEMENTERIAN KOMUNIKASI DAN DIGITAL

MAIN CONTRACTOR



APEX COMMUNICATIONS SDN BHD



PRIVASAT

SUB-CONTRACTOR



KNZ Engineering

KNZ ENGINEERING SDN BHD
 NO. 60 & 60A, Jalan Klebang Indah 1, Medan Klebang Indah, 30100 Ipoh, Perak
 No Tel: 019-3695071
 Email: admin@knzengineering.com.my
 Website: www.knzengineering.com.my

PROJECT TITLE

SEKOLAH KEBANGSAAN JENIS (TAMIL) LADANG KUALA BERNAM

DRAWING TITLE

TECHNICAL PROPOSAL (TP) FOR SEKOLAH KEBANGSAAN JENIS (TAMIL) LADANG KUALA BERNAM

PROJECT PHASE

PROJECT PHASE 2

DESIGN BY	ZUL FAHMIE	DATE	30/11/2024
DRAWN BY	ZUL FAHMIE	SCALE	NOT TO SCALE
CHECKED BY	AZHAN HARIS	JOB NUMBER	ABDB009
DRAWING NUMBER		ABDB009	
THIS PRINT AND ITS COPYRIGHT ARE THE PROPERTY OF KNZ ENGINEERING SDN. BHD.		1/8	
		A3	



LEGEND	
12C FOC	Installed 1:4 splitter in FDC
24C FOC	FDP
48C FOC	CLOSURE
90C FOC	NEW MANHOLE (PT)
144C FOC	INSTALLED POLE
INSTALLED POLE (9M)	INSTALLED RISER
SUSPENSION BIG	SUSPENSION SMALL
FDC	
NEW MANHOLE	HOUSE NUMBER
EXISTING ALLO POLE	LOOP
FDC BOUNDARY	
TENSION SMALL / TENSION BIG	EXISTING MANHOLE
CLOSURE NO.	FDC NO.
FDC NO.	
MH NO.	EXISTING TNB POLE NO.
NEW POLE NO.	

KEY PLAN

PROJECT OWNER



MAIN CONTRACTOR




SUB-CONTRACTOR



KNZ ENGINEERING SDN BHD
 NO. 60 & 60A, Jalan Klebang Indah 1, Medan Klebang Indah, 30100 Ipoh, Perak
 No Tel: 019-3695071
 Email: admin@knzengineering.com.my
 Website: www.knzengineering.com.my

PROJECT TITLE

SEKOLAH KEBANGSAAN JENIS (TAMIL) LADANG KUALA BERNAM

DRAWING TITLE

TECHNICAL PROPOSAL (TP) FOR SEKOLAH KEBANGSAAN JENIS (TAMIL) LADANG KUALA BERNAM

PROJECT PHASE

PROJECT PHASE 2

DESIGN BY	ZUL FAHMIE	DATE	30/11/2024
DRAWN BY	ZUL FAHMIE	SCALE	NOT TO SCALE
CHECKED BY	AZHAN HARIS	JOB NUMBER	ABDB009
DRAWING NUMBER	ABDB009		2/8
THIS PRINT AND ITS COPYRIGHT ARE THE PROPERTY OF KNZ ENGINEERING SDN. BHD.			



LEGEND					
	12C FOC		Installed 1:4 splitter in FDC		INSTALLED POLE (9M)
	24C FOC		FDP		NEW MANHOLE
	48C FOC		CLOSURE		HOUSE NUMBER
	90C FOC		NEW MANHOLE (PT)		EXISTING ALLO POLE
	144C FOC		INSTALLED POLE		LOOP
			FDP BOUNDARY		TENSION SMALL / TENSION BIG
			SUSPENSION BIG		EXISTING MANHOLE
			SUSPENSION SMALL		CLOSURE NO.
			FDC		FDP NO.
					FDC NO.
					MH NO.
					EXISTING TNB POLE NO.
					NEW POLE NO.
					SEE A.A. IN THIS SHEET
					SEE SHEET XXX

KEY PLAN

PROJECT OWNER



KEMENTERIAN KOMUNIKASI DAN DIGITAL

MAIN CONTRACTOR




SUB-CONTRACTOR



KNZ ENGINEERING SDN BHD
 NO. 60 & 60A, Jalan Klebang Indah 1, Medan Klebang Indah, 30100 Ipoh, Perak
 No Tel: 019-3695071
 Email: admin@knzengineering.com.my
 Website: www.knzengineering.com.my

PROJECT TITLE

SEKOLAH KEBANGSAAN JENIS (TAMIL) LADANG KUALA BERNAM

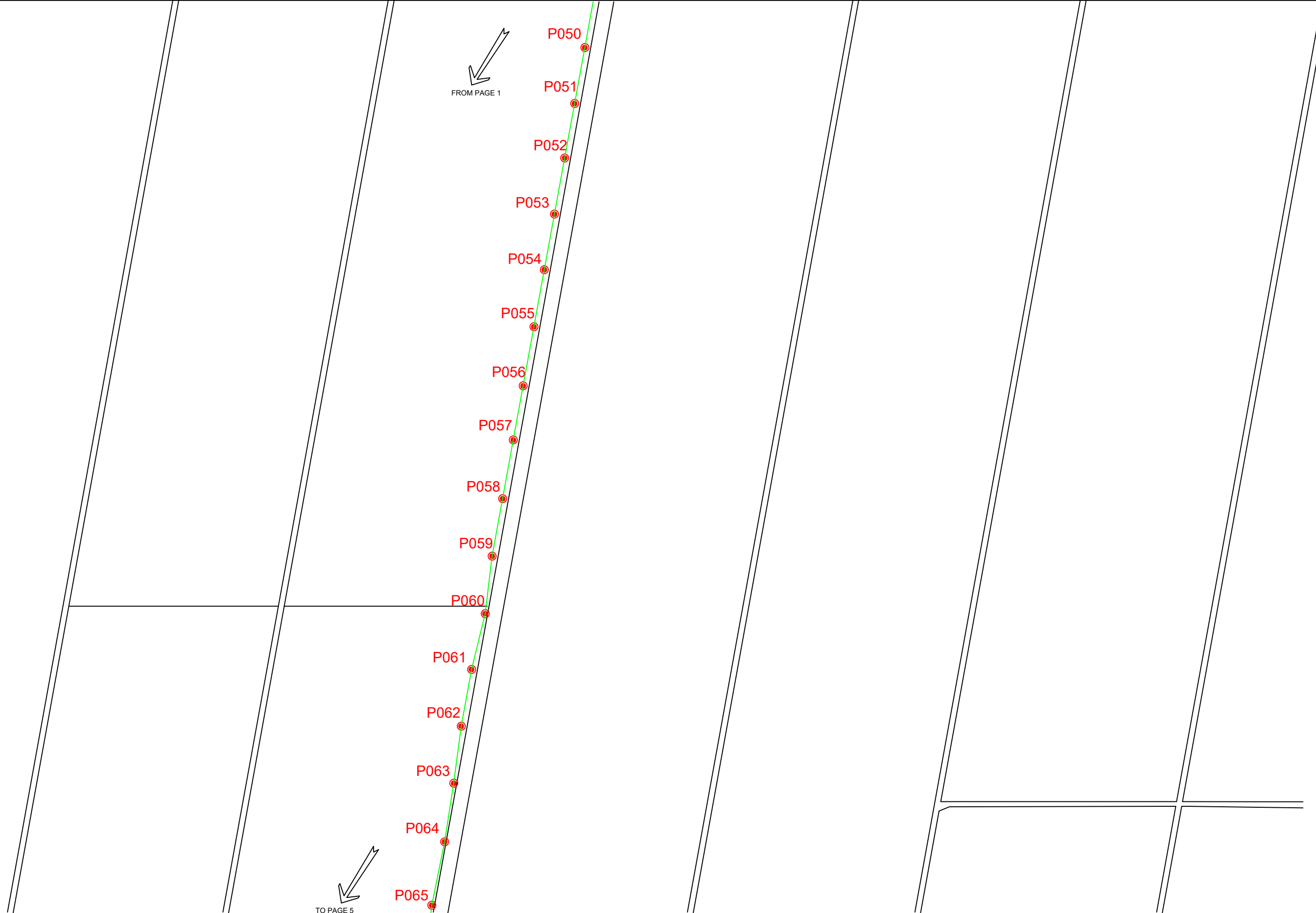
DRAWING TITLE

TECHNICAL PROPOSAL (TP) FOR SEKOLAH KEBANGSAAN JENIS (TAMIL) LADANG KUALA BERNAM

PROJECT PHASE

PROJECT PHASE 2

DESIGN BY	ZUL FAHMIE	DATE	30/11/2024
DRAWN BY	ZUL FAHMIE	SCALE	NOT TO SCALE
CHECKED BY	AZHAN HARIS	JOB NUMBER	ABDB009
DRAWING NUMBER	ABDB009		3/8
THIS PRINT AND ITS COPYRIGHT ARE THE PROPERTY OF KNZ ENGINEERING SDN. BHD.			



LEGEND									
	12C FOC		Installed 1:4 splitter in FDC		INSTALLED POLE (9M)		NEW MANHOLE		TS / TB TENSION SMALL / TENSION BIG
	24C FOC		FDP		INSTALLED RISER		HOUSE NUMBER		EXISTING MANHOLE
	48C FOC		CLOSURE		SUSPENSION BIG		EXISTING ALLO POLE		CLOSURE NO.
	90C FOC		NEW MANHOLE (PT)		SUSPENSION SMALL		LOOP		FDP NO.
	144C FOC		INSTALLED POLE		FDC		FDP BOUNDARY		FDC NO.
							MH NO.		EXISTING TNB POLE NO.
							NEW POLE NO.		SEE ALSO IN THIS SHEET
							SEE SHEET XXX		SEE SHEET XXX

KEY PLAN

PROJECT OWNER



MAIN CONTRACTOR




SUB-CONTRACTOR



KNZ ENGINEERING SDN BHD
 NO. 60 & 60A, Jalan Klebang Indah 1, Medan Klebang Indah, 30100 Ipoh, Perak
 No Tel: 019-3695071
 Email: admin@knzengineering.com.my
 Website: www.knzengineering.com.my

PROJECT TITLE

SEKOLAH KEBANGSAAN JENIS (TAMIL) LADANG KUALA BERNAM

DRAWING TITLE

TECHNICAL PROPOSAL (TP) FOR SEKOLAH KEBANGSAAN JENIS (TAMIL) LADANG KUALA BERNAM

PROJECT PHASE

PROJECT PHASE 2

DESIGN BY	ZUL FAHMIE	DATE	30/11/2024
DRAWN BY	ZUL FAHMIE	SCALE	NOT TO SCALE
CHECKED BY	AZHAN HARIS	JOB NUMBER	ABDB009
DRAWING NUMBER	ABDB009		4/8
THIS PRINT AND ITS COPYRIGHT ARE THE PROPERTY OF KNZ ENGINEERING SDN. BHD.			

Sheet

A3



LEGEND					
12C FOC	Installed 1:4 splitter in FDC	INSTALLED POLE (9M)	NEW MANHOLE	TS / TB TENSION SMALL / TENSION BIG	MH1 MH NO.
24C FOC	FDP	INSTALLED RISER	HOUSE NUMBER	EXISTING MANHOLE	TKB-1 EXISTING TNB POLE NO.
48C FOC	CLOSURE	SUSPENSION BIG	EXISTING ALLO POLE	CLOSURE NO.	P001 NEW POLE NO.
90C FOC	NEW MANHOLE (PT)	SUSPENSION SMALL	LOOP	FDP1 FDP NO.	SEE SHEET XXX
144C FOC	INSTALLED POLE	FDC	FDP BOUNDARY	FDC FDC NO.	SEE SHEET XXX

KEY PLAN

PROJECT OWNER

MAIN CONTRACTOR

SUB-CONTRACTOR

KNZ ENGINEERING SDN BHD
 NO. 60 & 60A, Jalan Klebang Indah 1, Medan Klebang Indah, 30100 Ipoh, Perak
 No Tel: 019-3695071
 Email: admin@knzengineering.com.my
 Website: www.knzengineering.com.my

PROJECT TITLE

SEKOLAH KEBANGSAAN JENIS (TAMIL) LADANG KUALA BERNAM

DRAWING TITLE

TECHNICAL PROPOSAL (TP) FOR SEKOLAH KEBANGSAAN JENIS (TAMIL) LADANG KUALA BERNAM

PROJECT PHASE

PROJECT PHASE 2

DESIGN BY	ZUL FAHMIE	DATE	30/11/2024
DRAWN BY	ZUL FAHMIE	SCALE	NOT TO SCALE
CHECKED BY	AZHAN HARIS	JOB NUMBER	ABDB009
DRAWING NUMBER	ABDB009		7/8
THIS PRINT AND ITS COPYRIGHT ARE THE PROPERTY OF KNZ ENGINEERING SDN. BHD.			



FROM PAGE 6

LEGEND					
	12C FOC		Installed 1:4 splitter in FDC		INSTALLED POLE (9M)
	24C FOC		FDP		INSTALLED RISER
	48C FOC		CLOSURE		SUSPENSION BIG
	90C FOC		NEW MANHOLE (PT)		SUSPENSION SMALL
	144C FOC		INSTALLED POLE		FDC
	NEW MANHOLE		EXISTING MANHOLE		EXISTING ALLO POLE
	HOUSE NUMBER		CLOSURE NO.		FDP NO.
	EXISTING ALLO POLE		FDP NO.		FDC NO.
	LOOP		FDC NO.		
	FDP BOUNDARY				

KEY PLAN

PROJECT OWNER

MAIN CONTRACTOR

SUB-CONTRACTOR

KNZ ENGINEERING SDN BHD
 NO. 60 & 60A, Jalan Kiebang Indah 1, Medan Kiebang Indah, 30100 Ipoh, Perak
 No Tel: 019-3695071
 Email: admin@knzengineering.com.my
 Website: www.knzengineering.com.my

PROJECT TITLE

SEKOLAH KEBANGSAAN JENIS (TAMIL) LADANG KUALA BERNAM

DRAWING TITLE

TECHNICAL PROPOSAL (TP) FOR SEKOLAH KEBANGSAAN JENIS (TAMIL) LADANG KUALA BERNAM

PROJECT PHASE

PROJECT PHASE 2

DESIGN BY	ZUL FAHMIE	DATE	30/11/2024
DRAWN BY	ZUL FAHMIE	SCALE	NOT TO SCALE
CHECKED BY	AZHAN HARIS	JOB NUMBER	ABDB009
DRAWING NUMBER	ABDB009		8/8
THIS PRINT AND ITS COPYRIGHT ARE THE PROPERTY OF KNZ ENGINEERING SDN. BHD.			