

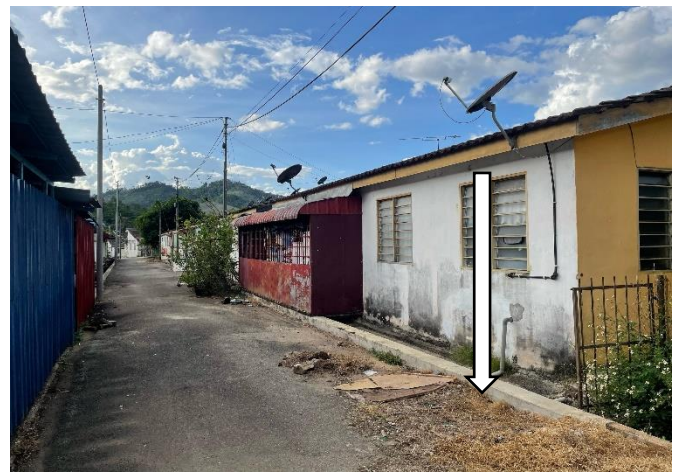
# TECHNICAL PROPOSAL

## POP2 ABC7036 SEKOLAH JENIS KEBANGSAAN (CINA) EOK KWAN (D-SIDE)

**Company Name** : WabTech Sdn Bhd  
**Company Address** : 101-1, Jalan Metro Sendayan, 71950, Seremban, Negeri Sembilan.  
**Prepared By** : Mohd Farid bin Othman  
**Date** : 19/02/2025



Point A



Point B

### Starting Point

**Site / Boundary Name** : Sekolah Jenis Kebangsaan (Cina) Eok Kwan  
**Address** : Jalan Tasek, 33100 Pengkalan Hulu, Perak.  
**District** : Pengkalan Hulu  
**Postcode** : 33100  
**State** : Perak  
**GPS Coordinate** : 5.705978, 100.998326  
**LRD** : A

### End Point

**Site / Boundary Name** : Taman Sri Kroh, Pengkalan Hulu  
**Address** : Jalan Sri Kroh 4, Taman Sri Kroh, 33100 Pengkalan Hulu, Perak  
**District** : Pengkalan Hulu  
**Postcode** : 33100  
**State** : Perak  
**GPS Coordinate** : 5.714027, 100.997570  
**LRD** : B



PROJEK PENYEDIAAN DAN PENYELENGGARAAN POINT OF PRESENCE (POP)  
FASA 2: HAB INFRASTRUTUK GENTIAN OPTIK BERHAMPIRAN DENGAN  
SEKOLAH, KAWASAN PERINDUSTRIAN, PREMIS KERAJAAN DAN KOMUNITI  
SEKITARNYA OLEH KEMENTERIAN KOMUNIKASI MALAYSIA – ZON UTARA  
(KKMM.400-11/17/132(1))



WABTECH SDN BHD  
(1398887-X)

## 1.0 WORK SUMMARY

NO	PROPOSED DISTANCE AND METHOD	UNIT	QUANTITY
1	Horizontal Directional Drilling (HDD)	m	30
2	Carriage Way Open Trench (CW)	m	0
3	Grass Verge Open Trenching (GV)	m	0
4	Micro Trenching (MT)	m	0
Total			

NO	OTHER INFORMATION	UNIT	QUANTITY
1	Installation of Short Span ADSS Fibre Cables	m	2897m
2	Install New Pole	ea	68
3	Install New JRC7 Manhole	ea	2
4	Install GI Riser 100mm	ea	2
5	Install Fiber Distribution Point and Closure (Splicing, Termination and Testing)	ea	18
6	Estimated Time Required for Completion	days	30



PROJEK PENYEDIAAN DAN PENYELENGGARAAN POINT OF PRESENCE (POP)  
FASA 2: HAB INFRASTRUTUK GENTIAN OPTIK BERHAMPIRAN DENGAN  
SEKOLAH, KAWASAN PERINDUSTRIAN, PREMIS KERAJAAN DAN KOMUNITI  
SEKITARNYA OLEH KEMENTERIAN KOMUNIKASI MALAYSIA – ZON UTARA  
(KKMM.400-11/17/132(1))



WABTECH SDN BHD  
(1398887-X)

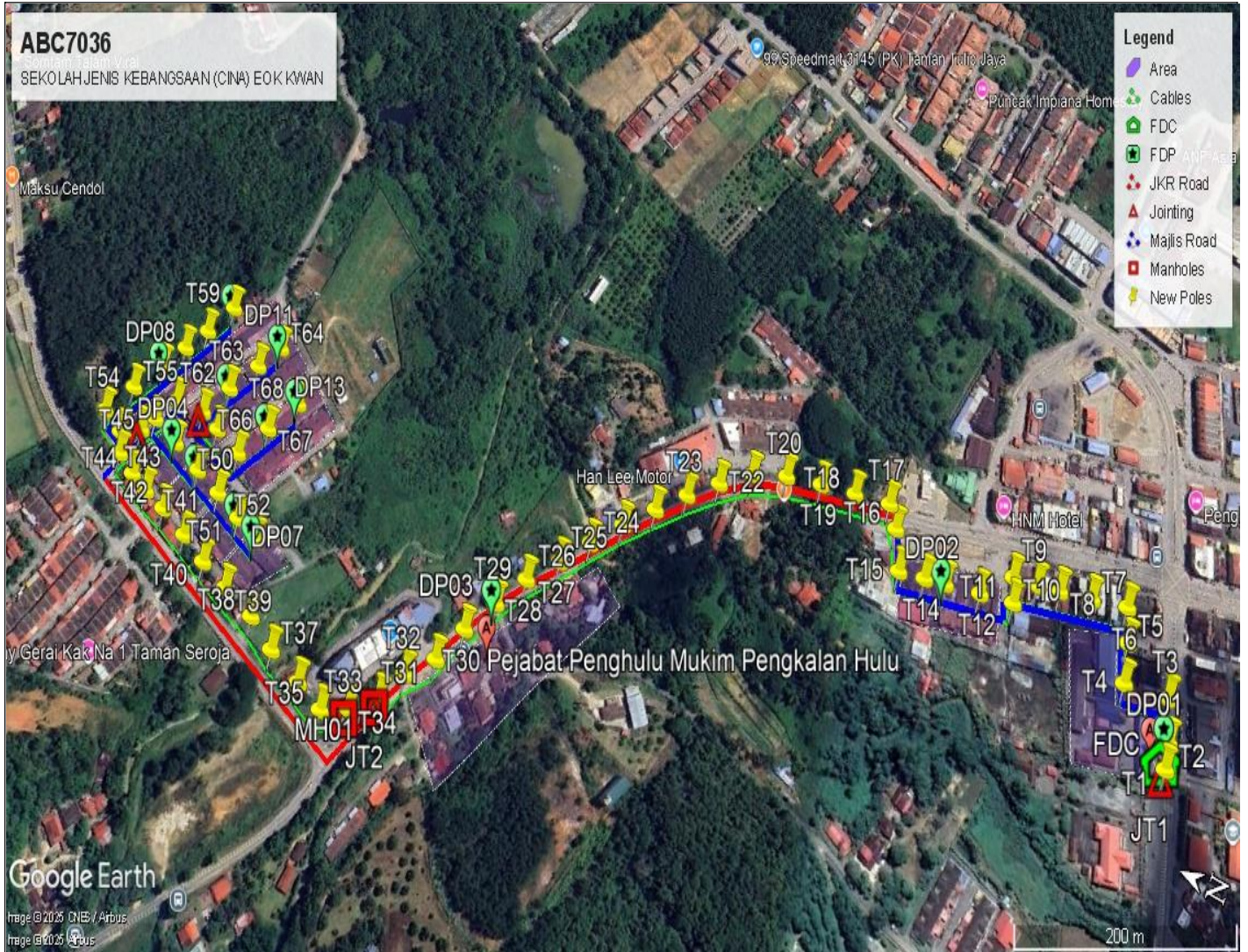
## 2.0 LOCAL AUTHORITY SUMMARY

Daerah Pengkalan Hulu

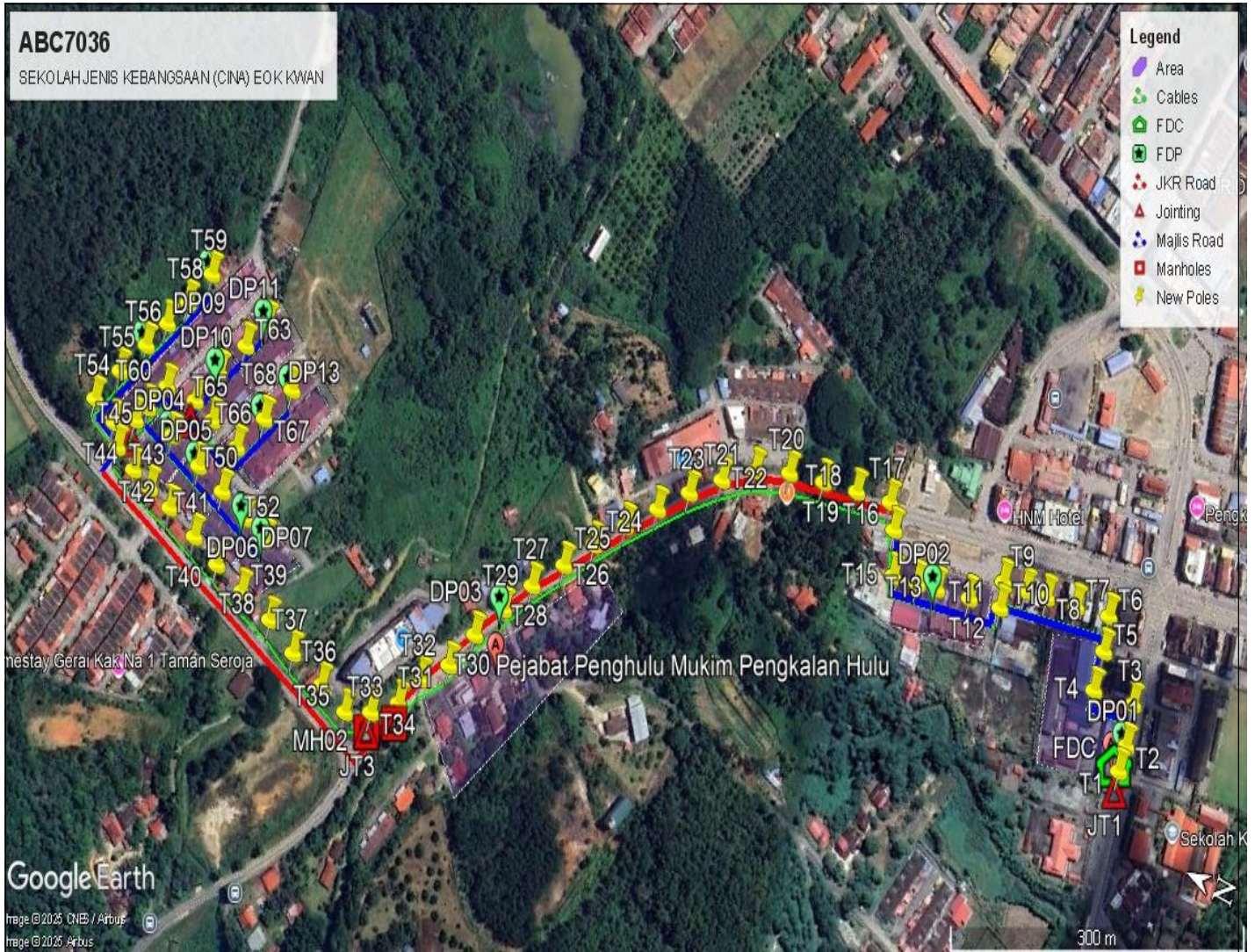
NO	ITEMS	Owner	Quantity	Distance (m)
1	HDD	JKR	1	30
		Majlis	-	-
		PDT	-	-
2	New Pole	JKR	32	1016
		Majlis	36	1078
		PDT	-	-
<b>Total Distance (m)</b>				<b>2124</b>

### 3.0 SITE PLAN (KMZ)

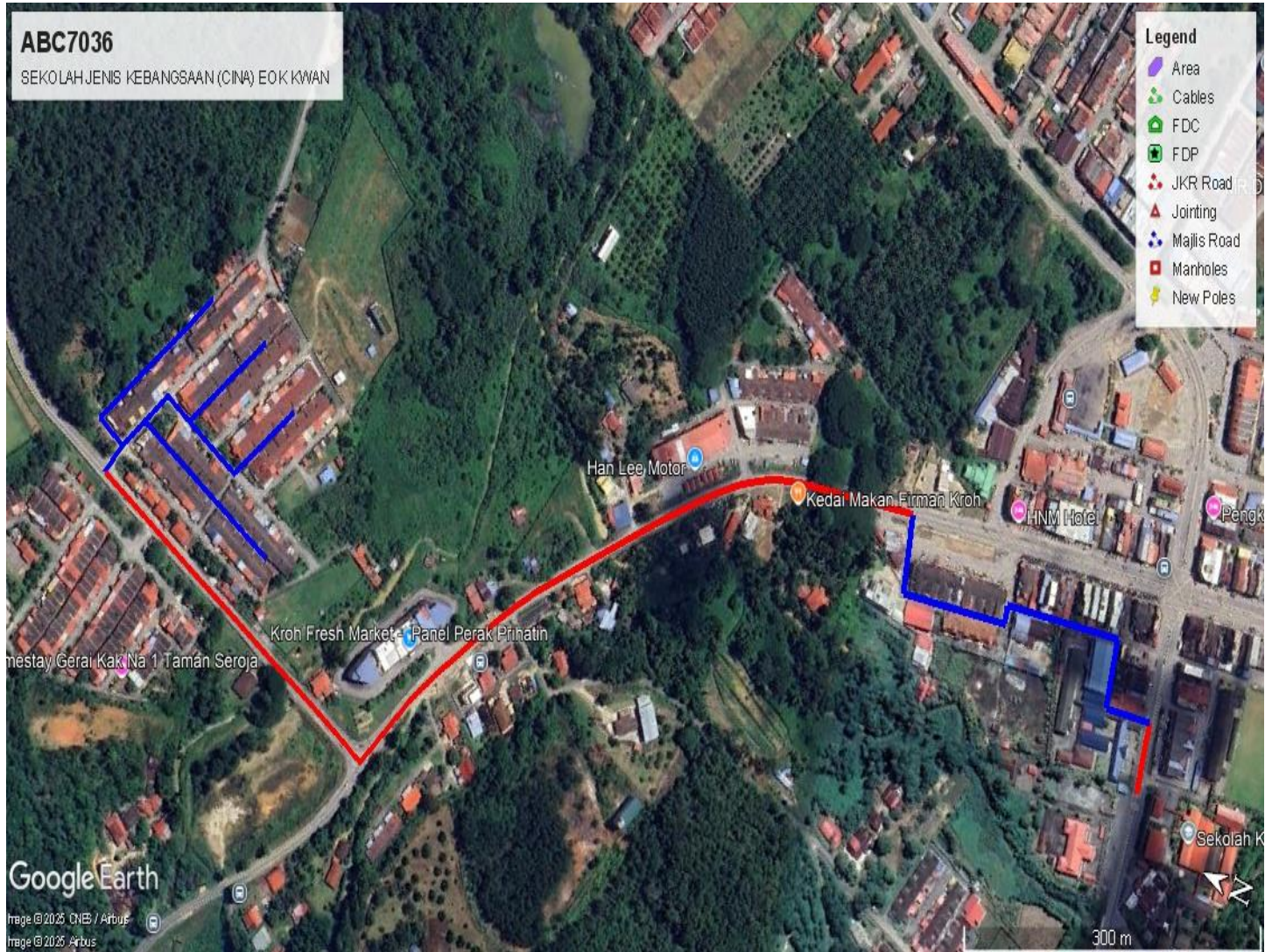
#### 3.1 Overview Site Area



### 3.2 Site boundry



### 3.3 Road Boundry

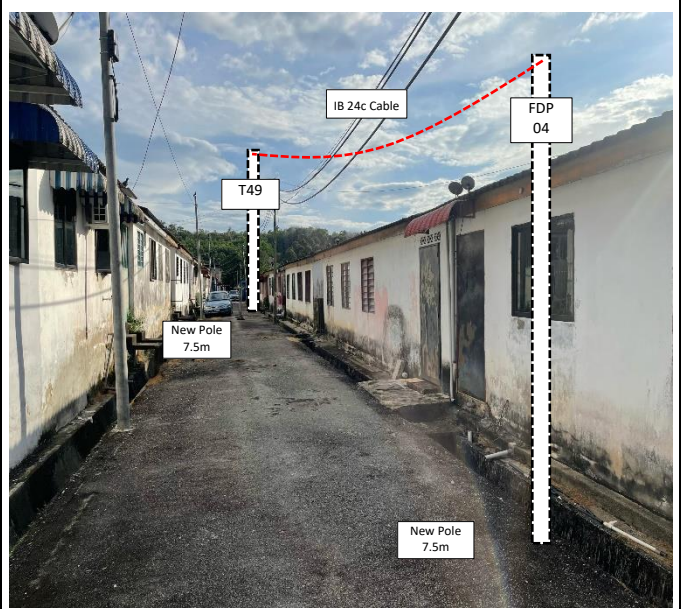
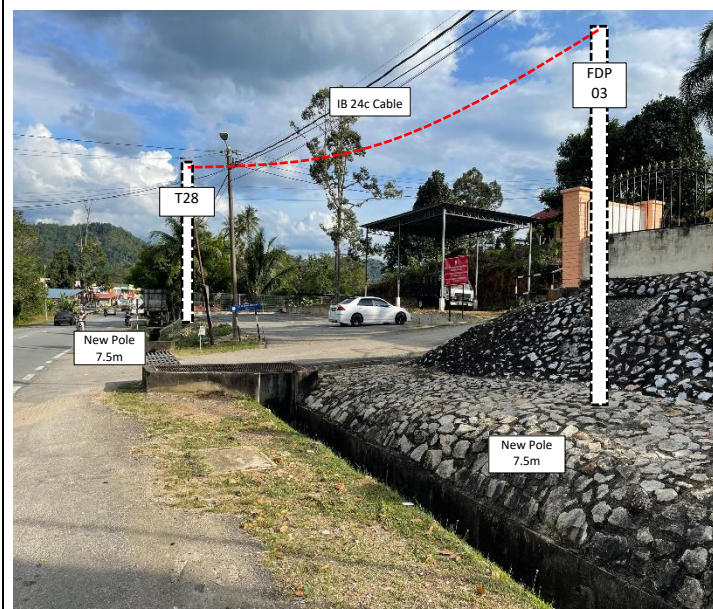
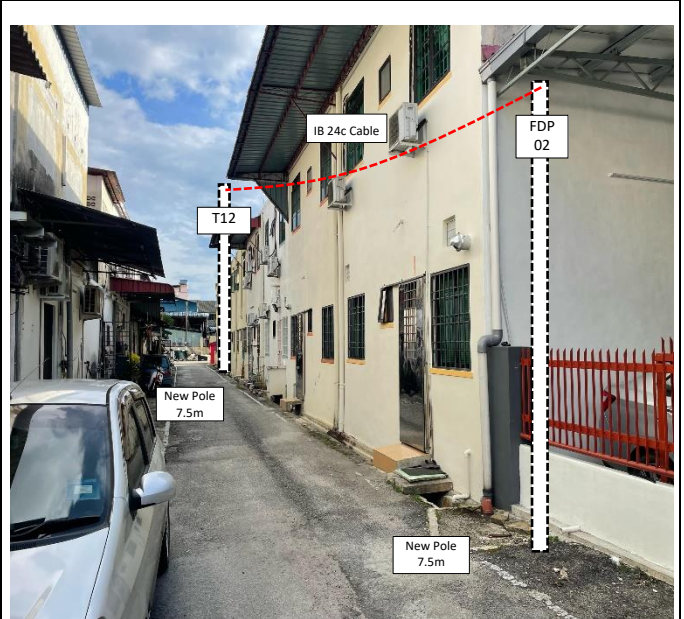
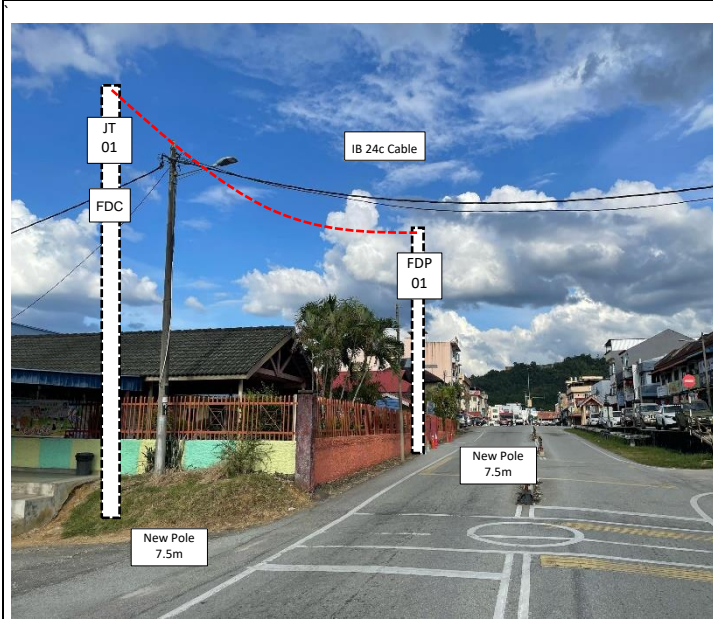


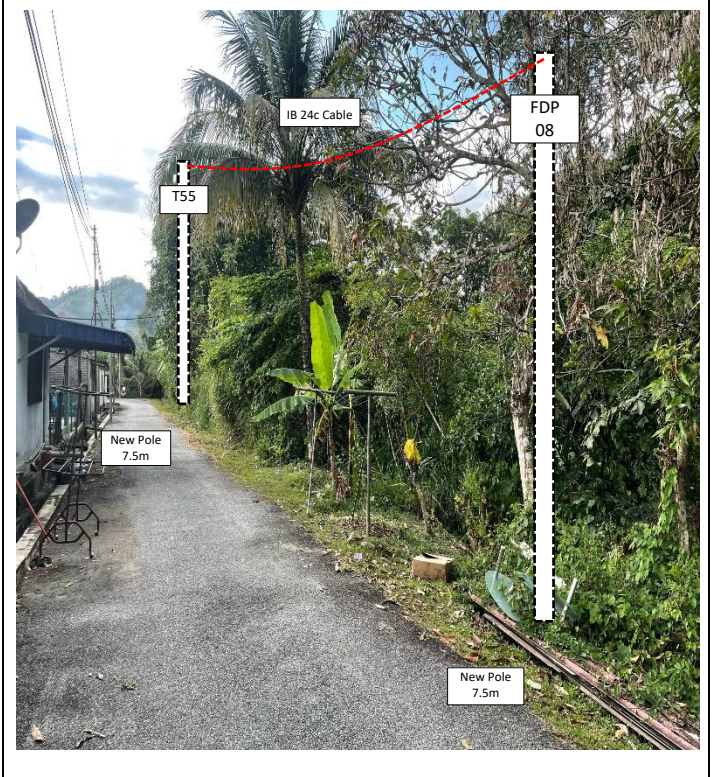
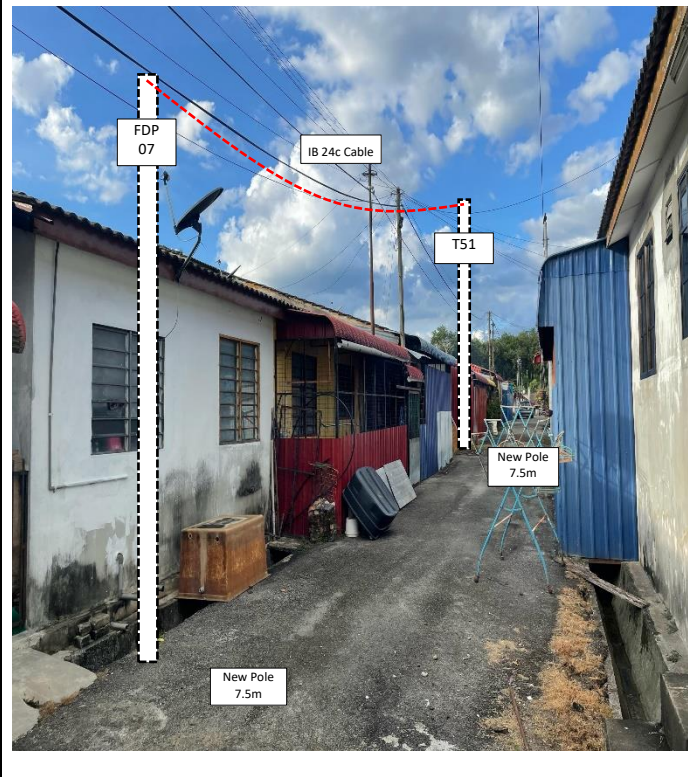
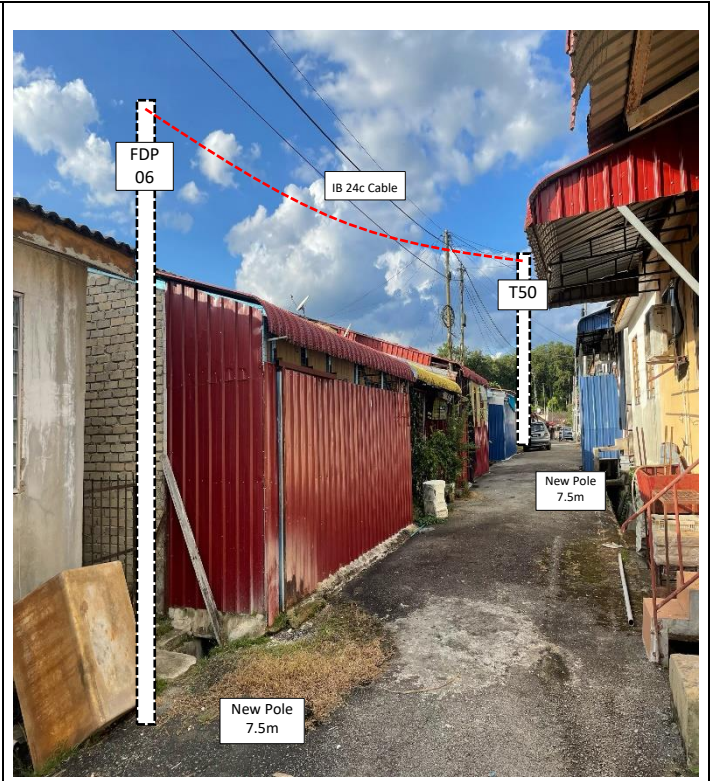
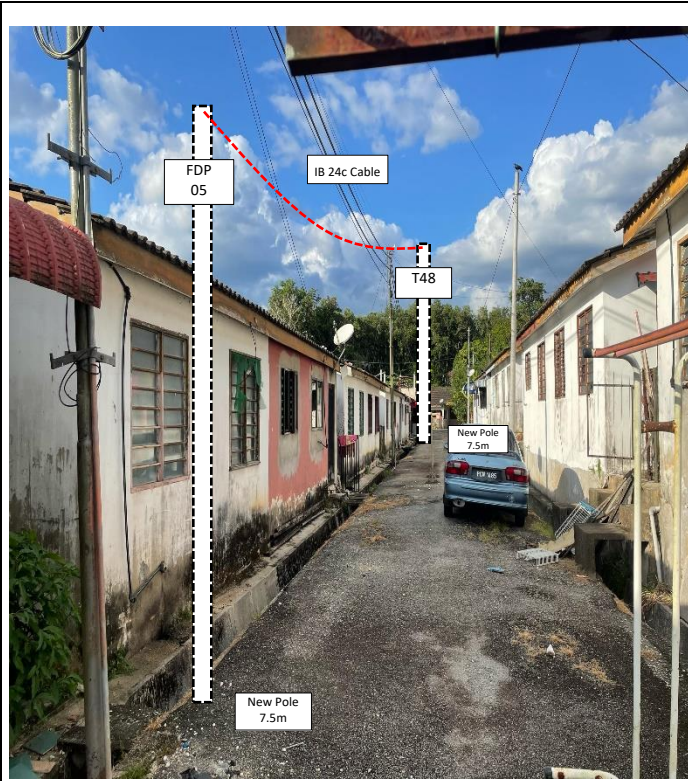
#### 4.0 PROPOSED NEW POLE

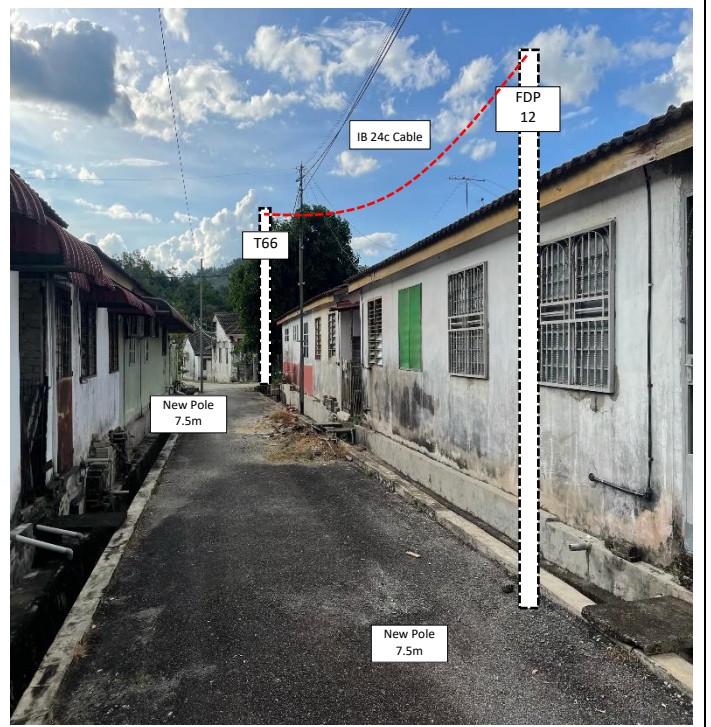
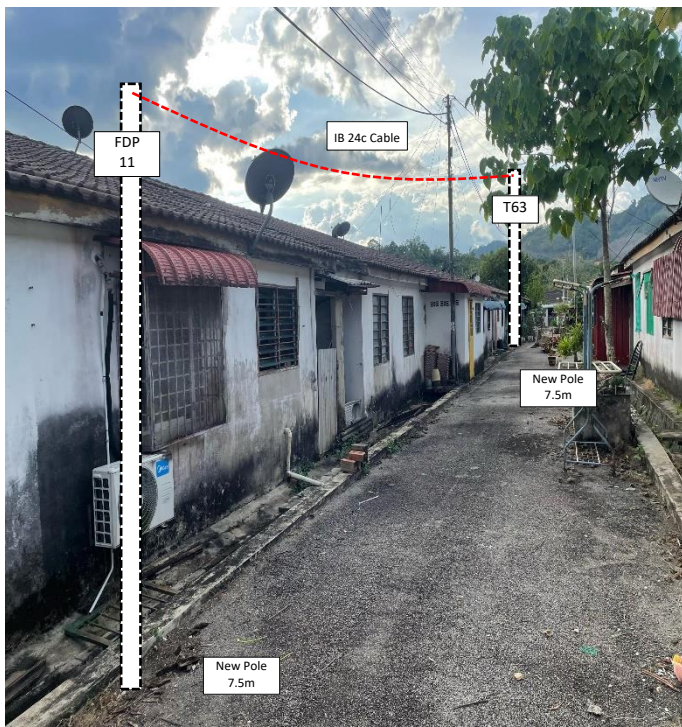
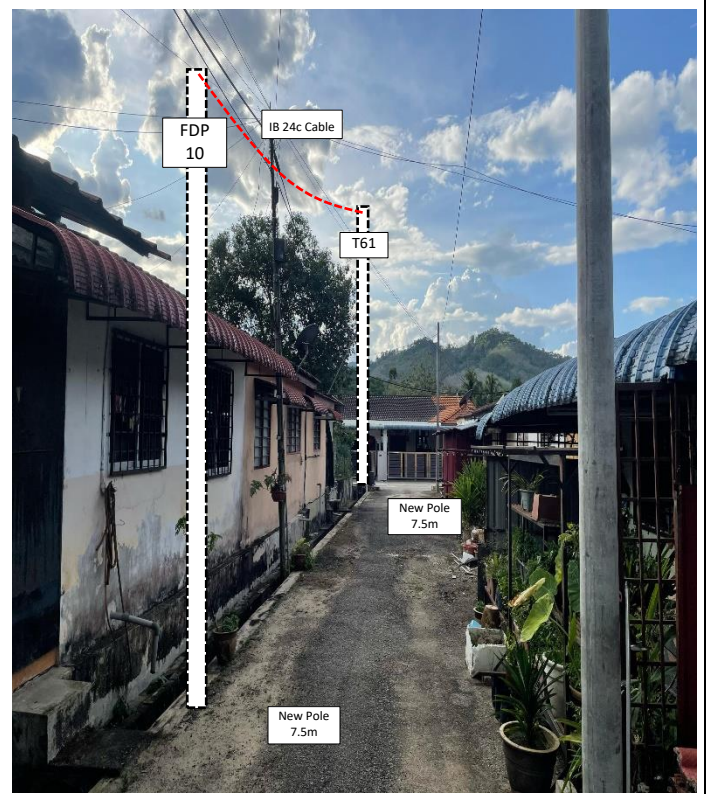
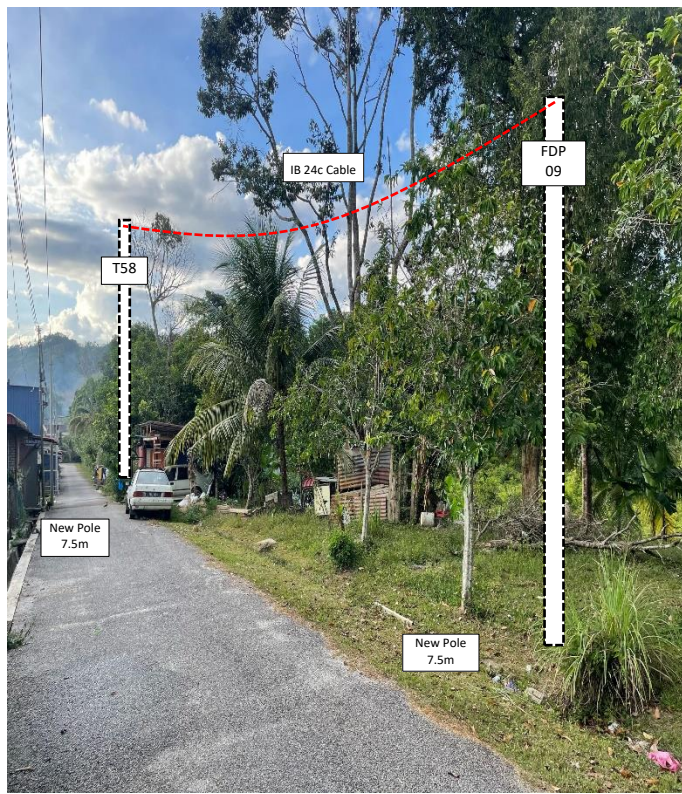
Proposed New Pole Coordinate					
No.	Pole Number	Distance (m)	Latitude	Longitude	Local Authority
1	FDC POLE	10	5.705974	100.998142	JKR
2	T001	20	5.705974	100.998142	JKR
3	T002	32	5.705976	100.998326	JKR
4	T003	41	5.706032	100.998612	JKR
5	T004	31	5.706402	100.998562	Majlis Daerah Pengkalan Hulu
6	T005	27	5.706426	100.998841	Majlis Daerah Pengkalan Hulu
7	T006	33	5.706481	100.999078	Majlis Daerah Pengkalan Hulu
8	T007	30	5.706777	100.999023	Majlis Daerah Pengkalan Hulu
9	T008	22	5.707046	100.998976	Majlis Daerah Pengkalan Hulu
10	T009	24	5.707240	100.998944	Majlis Daerah Pengkalan Hulu
11	T010	20	5.707449	100.998919	Majlis Daerah Pengkalan Hulu
12	T011	32	5.707408	100.998744	Majlis Daerah Pengkalan Hulu
13	T012	34	5.707696	100.998694	Majlis Daerah Pengkalan Hulu
14	T013	20	5.708002	100.998634	Majlis Daerah Pengkalan Hulu
15	T014	26	5.708184	100.998599	Majlis Daerah Pengkalan Hulu
16	T015	35	5.708410	100.998560	Majlis Daerah Pengkalan Hulu
17	T016	21	5.708519	100.998853	Majlis Daerah Pengkalan Hulu
18	T017	35	5.708623	100.999016	JKR
19	T018	35	5.708938	100.998961	JKR
20	T019	35	5.709248	100.998901	JKR
21	T020	35	5.709562	100.998835	JKR
22	T021	35	5.709860	100.998726	JKR
23	T022	35	5.710120	100.998548	JKR
24	T023	35	5.710364	100.998351	JKR
25	T024	35	5.710593	100.998133	JKR
26	T025	36	5.710823	100.997913	JKR
27	T026	34	5.711043	100.997680	JKR
28	T027	36	5.711245	100.997444	JKR
29	T028	35	5.711462	100.997203	JKR
30	T029	36	5.711646	100.996950	JKR
31	T030	35	5.711824	100.996684	JKR
32	T031	31	5.711964	100.996401	JKR
33	T032	30	5.712169	100.996212	JKR
34	T033	30	5.712296	100.995979	JKR
35	T034	27	5.712512	100.995817	JKR
36	T035	32	5.712738	100.995721	JKR
37	T036	38	5.713010	100.995807	JKR
38	T037	35	5.713337	100.995906	JKR

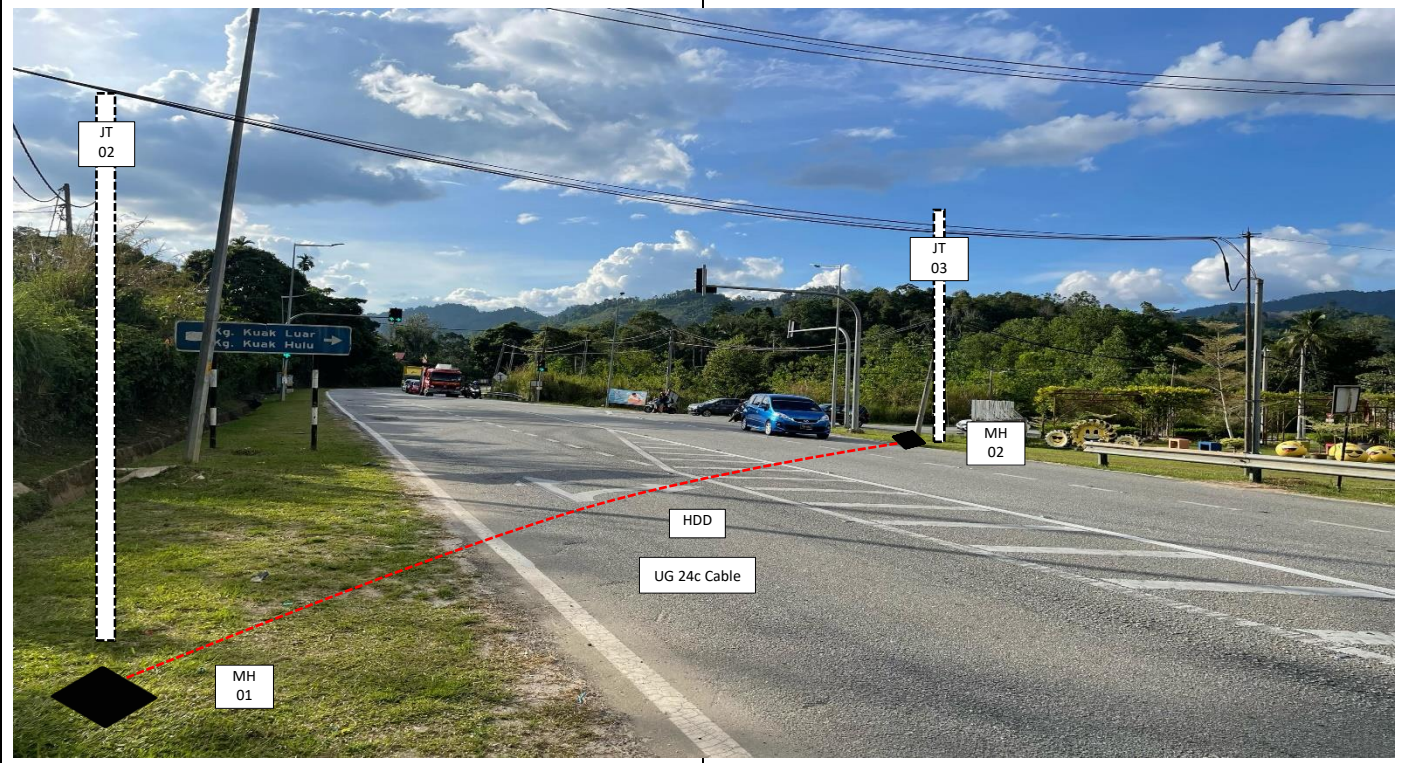
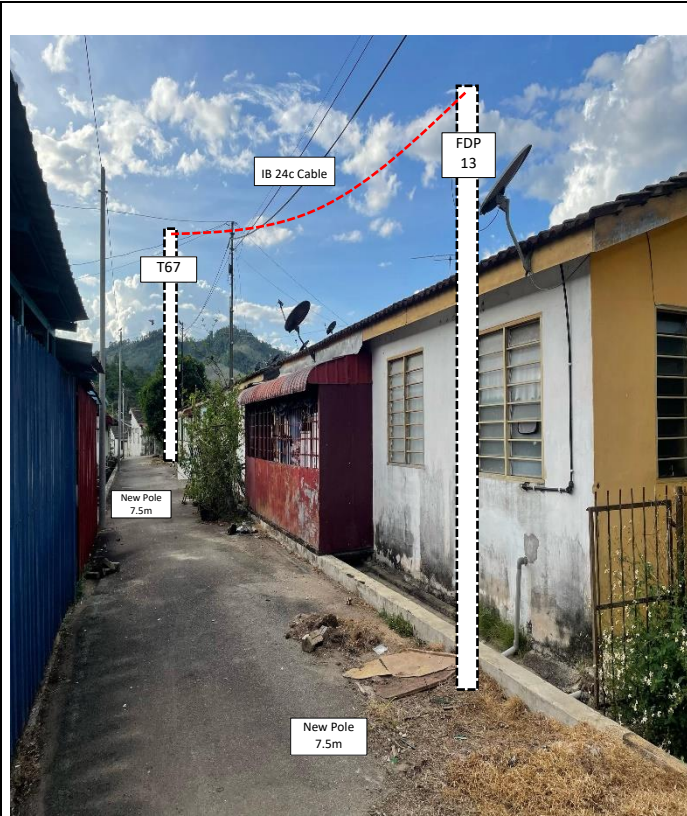
No.	Pole Number	Distance (m)	Latitude	Longitude	Local Authority
39	T038	36	5.713621	100.996035	JKR
40	T039	32	5.713936	100.996113	JKR
41	T040	31	5.714215	100.996197	JKR
42	T041	33	5.714478	100.996293	JKR
43	T042	25	5.714763	100.996386	JKR
44	T043	21	5.714986	100.996439	JKR
45	T044	24	5.715167	100.996497	JKR
46	T045	28	5.715364	100.996582	JKR
47	T046	16	5.715284	100.996818	Majlis Daerah Pengkalan Hulu
48	T047	33	5.715207	100.996941	Majlis Daerah Pengkalan Hulu
49	T048	35	5.714927	100.996853	Majlis Daerah Pengkalan Hulu
50	T049	31	5.714622	100.996756	Majlis Daerah Pengkalan Hulu
51	T050	31	5.714354	100.996680	Majlis Daerah Pengkalan Hulu
52	T051	26	5.714091	100.996591	Majlis Daerah Pengkalan Hulu
53	T052	21	5.713868	100.996521	Majlis Daerah Pengkalan Hulu
54	T053	26	5.715454	100.996725	Majlis Daerah Pengkalan Hulu
55	T054	33	5.715674	100.996810	Majlis Daerah Pengkalan Hulu
56	T055	33	5.715536	100.997073	Majlis Daerah Pengkalan Hulu
57	T056	27	5.715380	100.997328	Majlis Daerah Pengkalan Hulu
58	T057	26	5.715261	100.997541	Majlis Daerah Pengkalan Hulu
59	T058	33	5.715140	100.997746	Majlis Daerah Pengkalan Hulu
60	T059	25	5.715007	100.998011	Majlis Daerah Pengkalan Hulu
61	T060	31	5.715096	100.997140	Majlis Daerah Pengkalan Hulu
62	T061	32	5.714818	100.997157	Majlis Daerah Pengkalan Hulu
63	T062	34	5.714687	100.997418	Majlis Daerah Pengkalan Hulu
64	T063	28	5.714532	100.997682	Majlis Daerah Pengkalan Hulu
65	T064	23	5.714409	100.997897	Majlis Daerah Pengkalan Hulu
66	T065	32	5.714618	100.997094	Majlis Daerah Pengkalan Hulu
67	T066	36	5.714346	100.997009	Majlis Daerah Pengkalan Hulu
68	T067	36	5.714185	100.997288	Majlis Daerah Pengkalan Hulu
69	T068	36	5.714025	100.997569	Majlis Daerah Pengkalan Hulu
70	MH01	30	5.712296	100.995977	JKR
71	MH02	30	5.712511	100.995819	JKR

5.0 SITE PHOTOS - PROPOSED NEW POLE











PROJEK PENYEDIAAN DAN PENYELENGGARAAN POINT OF PRESENCE (POP)  
FASA 2: HAB INFRASTRUTUK GENTIAN OPTIK BERHAMPIRAN DENGAN  
SEKOLAH, KAWASAN PERINDUSTRIAN, PREMIS KERAJAAN DAN KOMUNITI  
SEKITARNYA OLEH KEMENTERIAN KOMUNIKASI MALAYSIA – ZON UTARA  
(KKMM.400-11/17/132(1))



WABTECH SDN BHD  
(1398387-X)

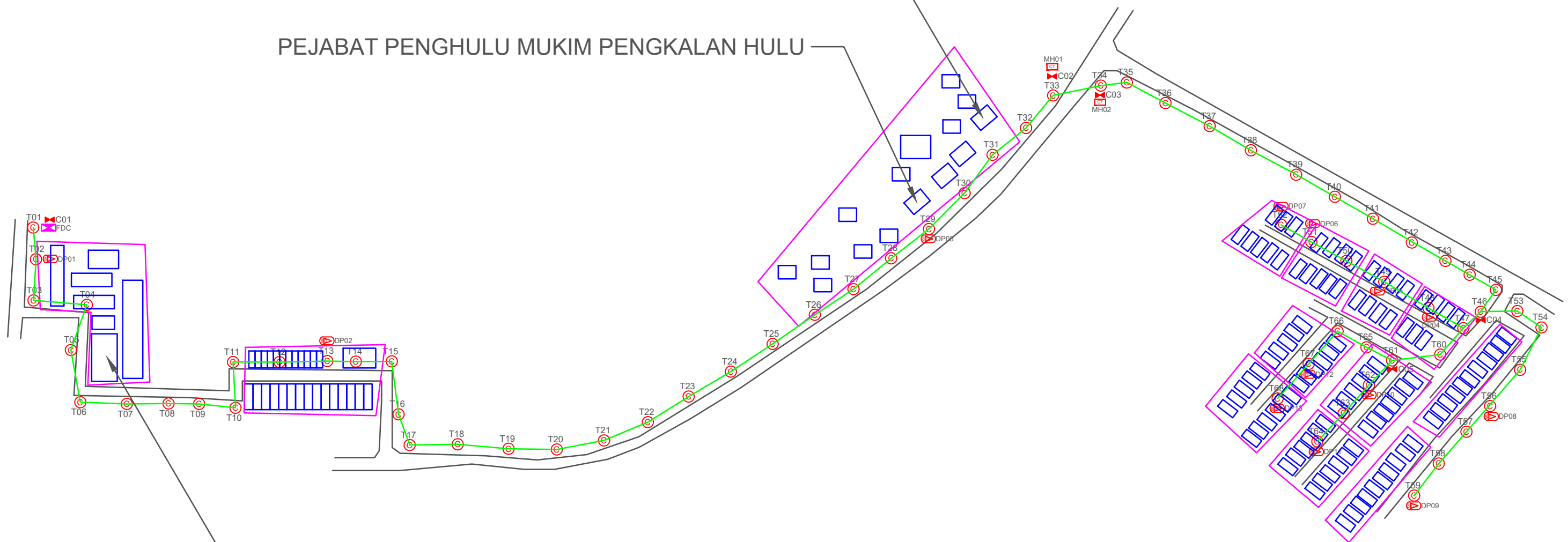
## 6.0 3<sup>rd</sup> PARTIES DEPENDENCIES

NO	LOCAL COUNCIL / AUTHORITY	REMARK
1	Majlis Daerah Pengkalan Hulu	1078m
2	JKR Daerah Pengkalan Hulu	1016m

PEJABAT RENJER HUTAN PENGKALAN HULU

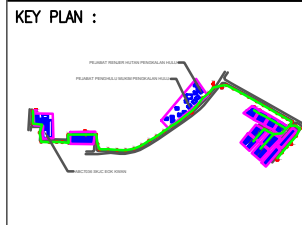
PEJABAT PENGHULU MUKIM PENGKALAN HULU

ABC7036 SKJC EOK KWAN



**TOTAL HOME PASSES: 104 UNITS**

LEGEND											
	12C FOC		Installed 1:4 splitter in FDC		Installed Pole (9m)		New Manhole(JRC7)		Tension Small / Tension Big		MH NO.
	24C FOC		FDP with (1:8) splitter		Installed Riser		House Number		Existing Manhole		Existing TNB Pole NO.
	48C FOC		Closure		Suspension Big		Existing TNB Pole		Closure NO.		New Pole NO.
	96C FOC		New Manhole (PT)		Suspension Small		LOOP		FDP NO.		SEE A-A in this page
	144C FOC		Installed Pole (7.5M)		FDC		FDP Boundary		FDC NO.		SEE SHEET XXXX



PROJECT OWNER :

KEMENTERIAN KOMUNIKASI

MAIN CONTRACTOR

PRIVASAT

SUB-CONTRACTOR :

WABTECH SDN BHD

PROJECT TITLE:

CONTRACT FOR THE PROVISION OF SUPPLY, INSTALLATION, AND COMMISSIONING OF FTTX NETWORK INFRASTRUCTURE - POP 2 PROJECT D-SIDE - ABC 7036 - SJKC EOK KWAN

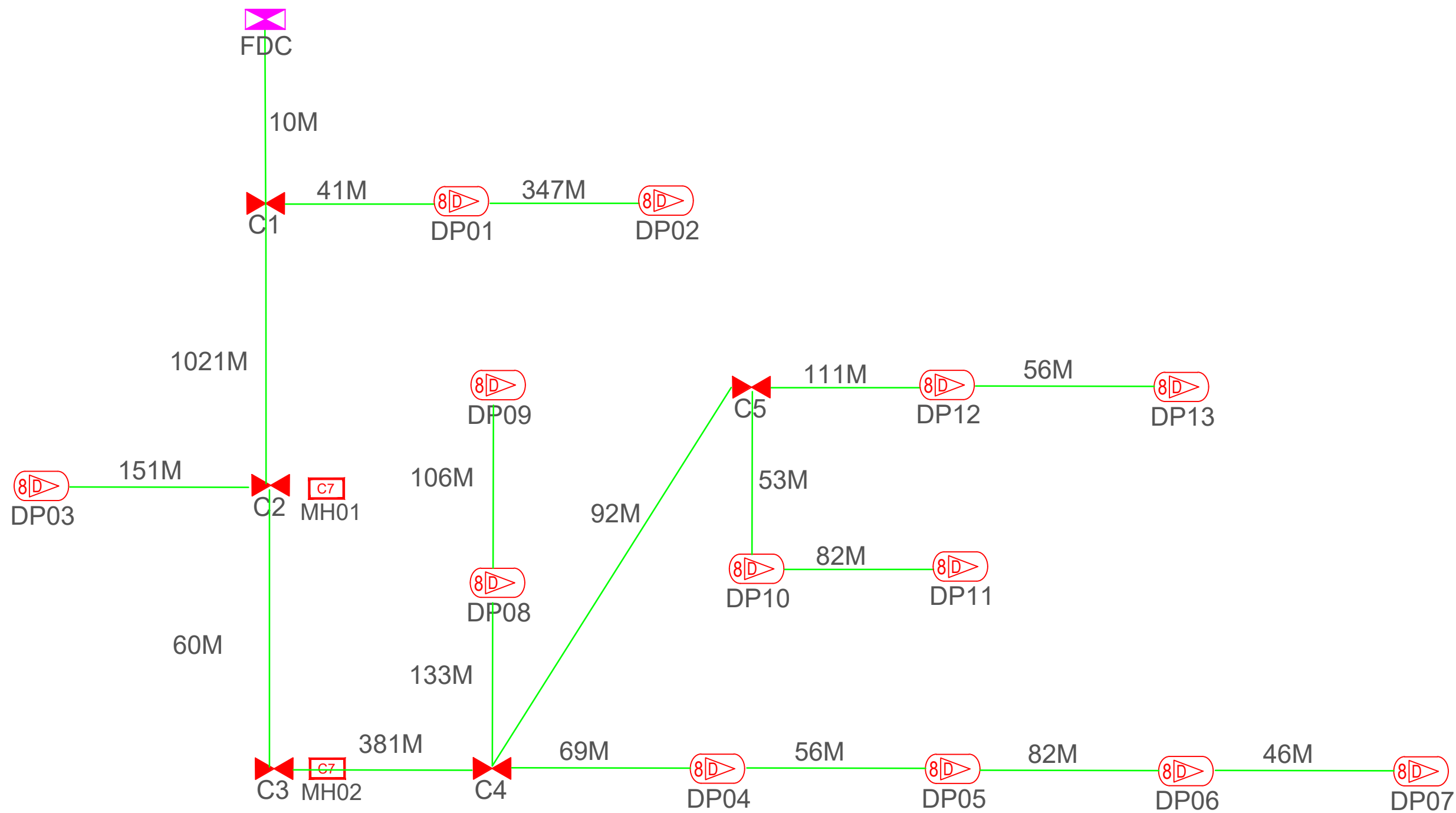
DRAWING TITLE:

**ABC7036 SJKC EOK KWAN**

PROJECT PHASE:

**PROJECT PHASE**

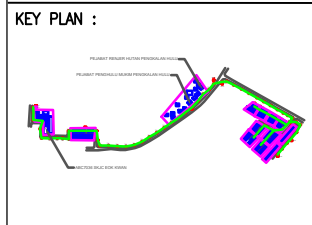
Design By	ENGINEER	Date	DATE
Drawn By	CAD ENGINEER	Scale	NTS
Checked By	ENGINEER	Job Number	JOB/NUMBER
DRAWING NUMBER :		Sheet :	
DRAWING/NUMBER		1/1	
THIS PRINT AND ITS COPYRIGHT ARE THE PROPERTY			
Size : A3			



**TOTAL FOC DISTANCE: 2,897 METERS**

LEGEND

12C FOC	Installed 1:4 splitter in FDC	Installed Pole (9m)	C7	New Manhole(JRC7)	TS / TB	Tension Small / Tension Big	MH1	MH NO.
24C FOC	FDP with (1:8) splitter	Installed Riser	#	House Number	Existing Manhole	TKS-1	Existing TNB Pole NO.	
48C FOC	Closure	Suspension Big	Existing TNB Pole	C01	Closure NO.	P001	New Pole NO.	
96C FOC	New Manhole (PT)	Suspension Small	LOOP	FDP1	FDP NO.	(A)	SEE A-A in this page	
144C FOC	Installed Pole (7.5M)	FDC	FDP Boundary	FDC	FDC NO.	(A)	SEE SHEET XXXX	



PROJECT OWNER :

MAIN CONTRACTOR

PRIVASAT

SUB-CONTRACTOR :

PROJECT TITLE:

CONTRACT FOR THE PROVISION OF SUPPLY, INSTALLATION, AND COMMISSIONING OF FTTX NETWORK INFRASTRUCTURE - POP 2 PROJECT D-SIDE - ABC 7036 - SJKC EOK KWAN

DRAWING TITLE:

ABC7036 SJKC EOK KWAN

PROJECT PHASE:

PROJECT PHASE

Design By	ENGINEER	Date	DATE
Drawn By	CAD ENGINEER	Scale	NTS
Checked By	ENGINEER	Job Number	JOB/NUMBER
DRAWING NUMBER :		Sheet :	
DRAWING/NUMBER		1/1	
THIS PRINT AND ITS COPYRIGHT ARE THE PROPERTY		Size :	
		A3	