



PROJEK PENYEDIAAN DAN PENYELENGGARAAN POINT OF PRESENCE (POP)  
FASA 2: HAB INFRASTRUKTUR GENTIAN OPTIK BERHAMPIRAN DENGAN  
SEKOLAH, KAWASAN PERINDUSTRIAN, PREMIS KERAJAAN DAN KOMUNITI  
SEKITARNYA OLEH KEMENTERIAN KOMUNIKASI MALAYSIA - ZON UTARA  
(KKMM.400-11/17/132(1))



## TECHNICAL PROPOSAL POP2 ABD0083 SEKOLAH JENIS KEBANGSAAN (TAMIL) LADANG BIKAM (D-SIDE)

Company Name:	STEADCOM SDN BHD
Company Address:	11-3, Jalan Puteri 2/6, Bandar Puteri, 47100 Puchong, Selangor
Prepared By:	HANIERAH
Date:	26/12/2024



Point A



Point B

### Starting Point

Site / Boundary Name	Sungkai
Address	Sekolah Jenis Kebangsaan (Tamil) Ladang Bikam
District	Sungkai
Postcode	35600
State	Perak
GPS Coordinate	4.047717, 101.298074
LRD	A

### End Point

Site / Boundary Name	Sungkai
Address	Sungkai, Perak
District	Sungkai
Postcode	35600
State	Perak
GPS Coordinate	4.040997, 101.297160
LRD	B



PROJEK PENYEDIAAN DAN PENYELENGGARAAN POINT OF PRESENCE (POP)  
 FASA 2: HAB INFRASTRUKTUR GENTIAN OPTIK BERHAMPIRAN DENGAN  
 SEKOLAH, KAWASAN PERINDUSTRIAN, PREMIS KERAJAAN DAN KOMUNITI  
 SEKITARNYA OLEH KEMENTERIAN KOMUNIKASI MALAYSIA - ZON UTARA  
 (KKMM.400-11/17/132(1))



A member of OCK Group Berhad

## 1.0 Work Summary

No	Proposed Distance and Method	Unit	Qty
1	Horizontal Directional Drilling (HDD)	m	<b>495</b>
2	Carriage Way Open trench (CW)	m	<b>0</b>
3	Grass Verge Open Trenching (GV)	m	<b>0</b>
4	Micro trenching (MT)	m	<b>0</b>
	Total		<b>0</b>

	Other Information	Unit	Qty
1	Proposed Manhole	EA	<b>4</b>
2	Proposed Pole	EA	<b>59</b>
3	Joint Closure	EA	<b>4</b>
4	Estimated time required for completion	days	<b>90</b>



PROJEK PENYEDIAAN DAN PENYELENGGARAAN POINT OF PRESENCE (POP)  
 FASA 2: HAB INFRASTRUKTUR GENTIAN OPTIK BERHAMPIRAN DENGAN  
 SEKOLAH, KAWASAN PERINDUSTRIAN, PREMIS KERAJAAN DAN KOMUNITI  
 SEKITARNYA OLEH KEMENTERIAN KOMUNIKASI MALAYSIA - ZON UTARA  
 (KKMM.400-11/17/132(1))



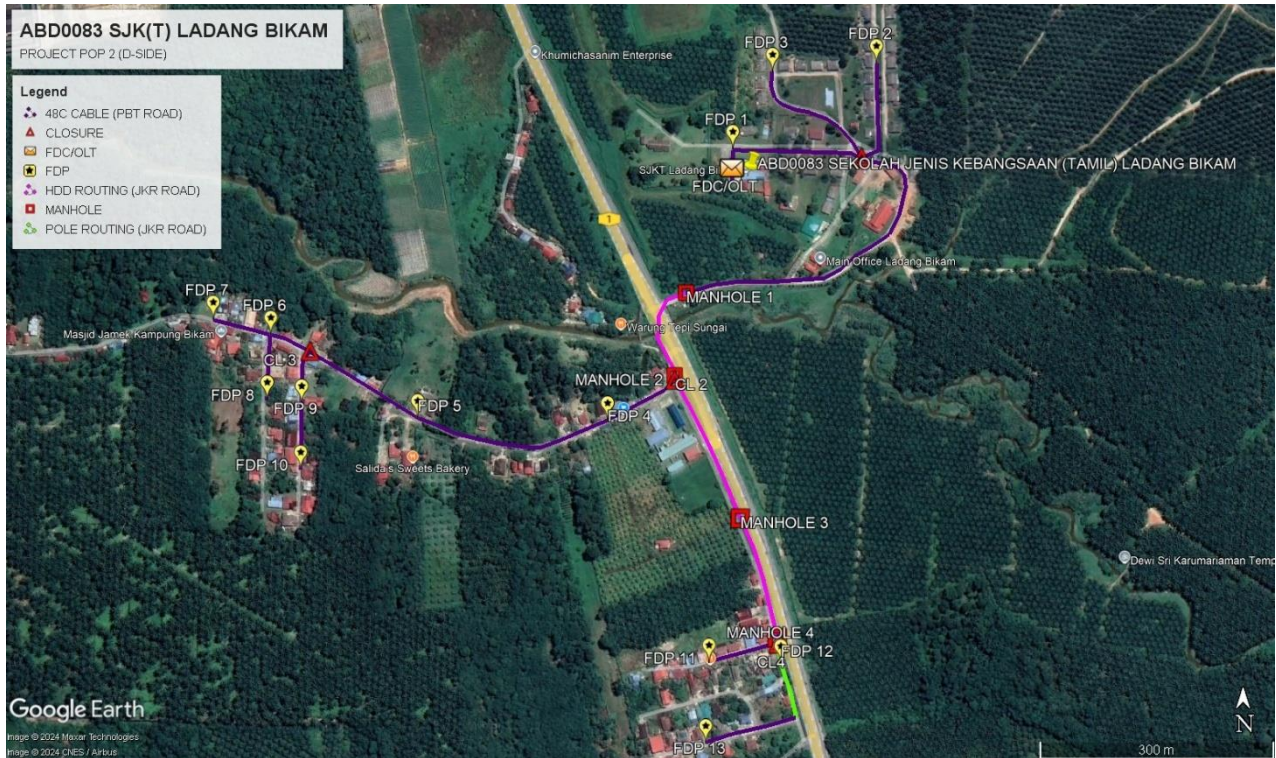
## 2.0 LOCAL AUTHORITY SUMMARY

Daerah Tapah

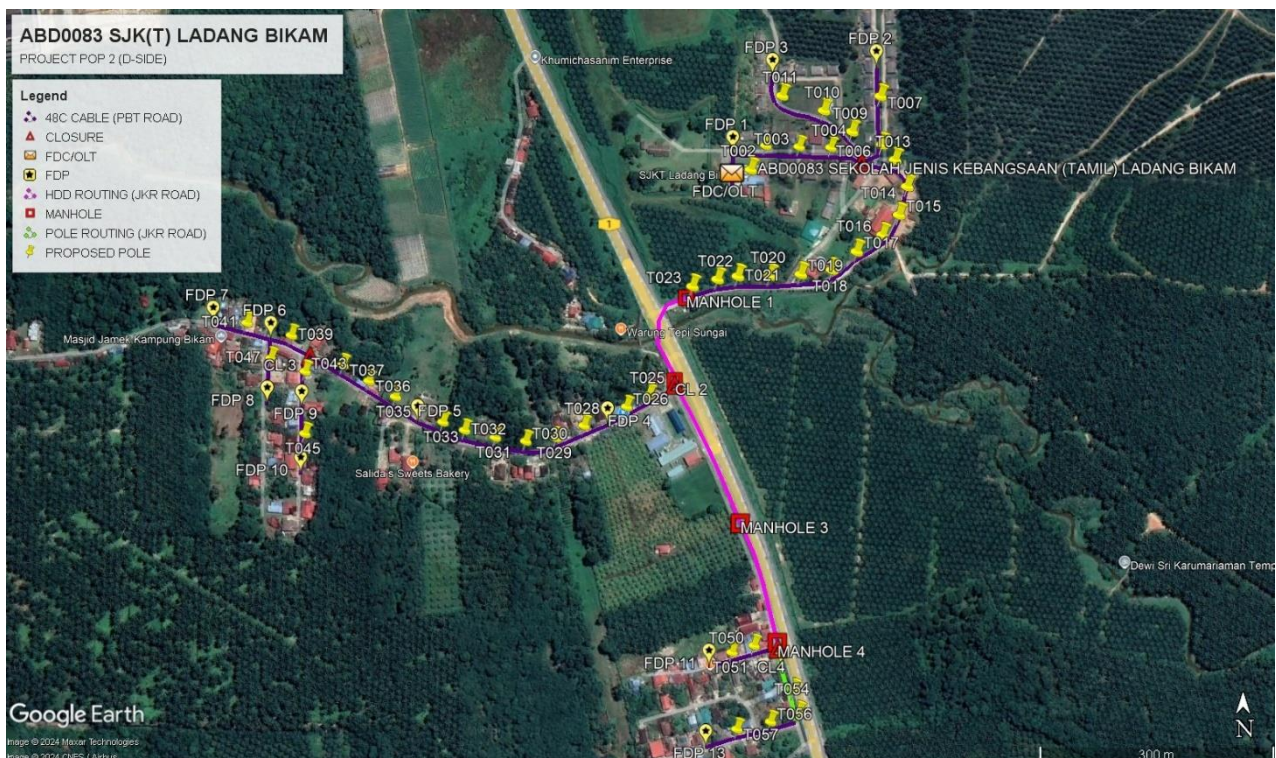
Bil	Items	Owner	Quantity	Distance
1	HDD	JKR	4	495m
		Majlis	-	-
		Estate / Private Land	-	-
2	New Pole	JKR	4	30m
		Majlis	55	1980m
		Estate / Private Land	-	-
3	Existing TNB Pole	JKR	-	-
		Majlis	-	-
		Estate / Private Land	-	-
Total				2505m

### 3.0 SITE PLAN KMZ (Overview site area)

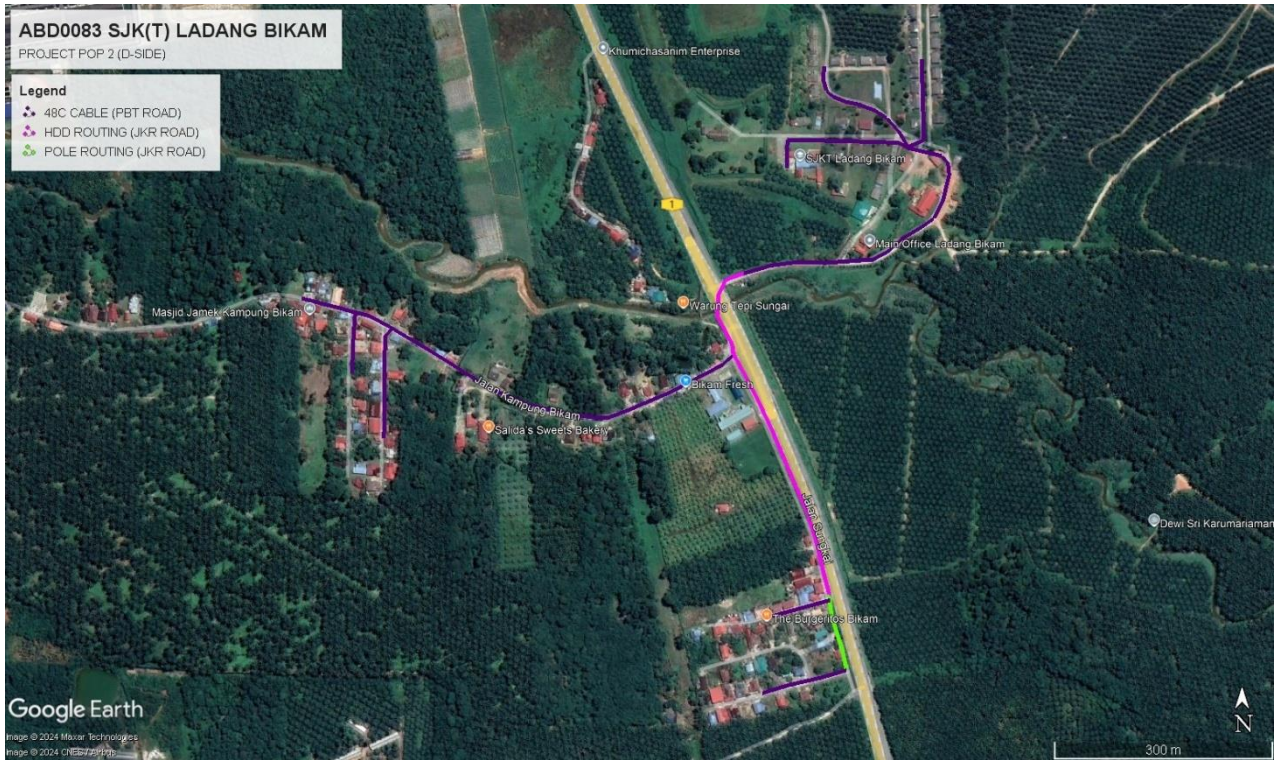
#### 3.1 Proposed FDP



#### 3.2 Proposed New Pole

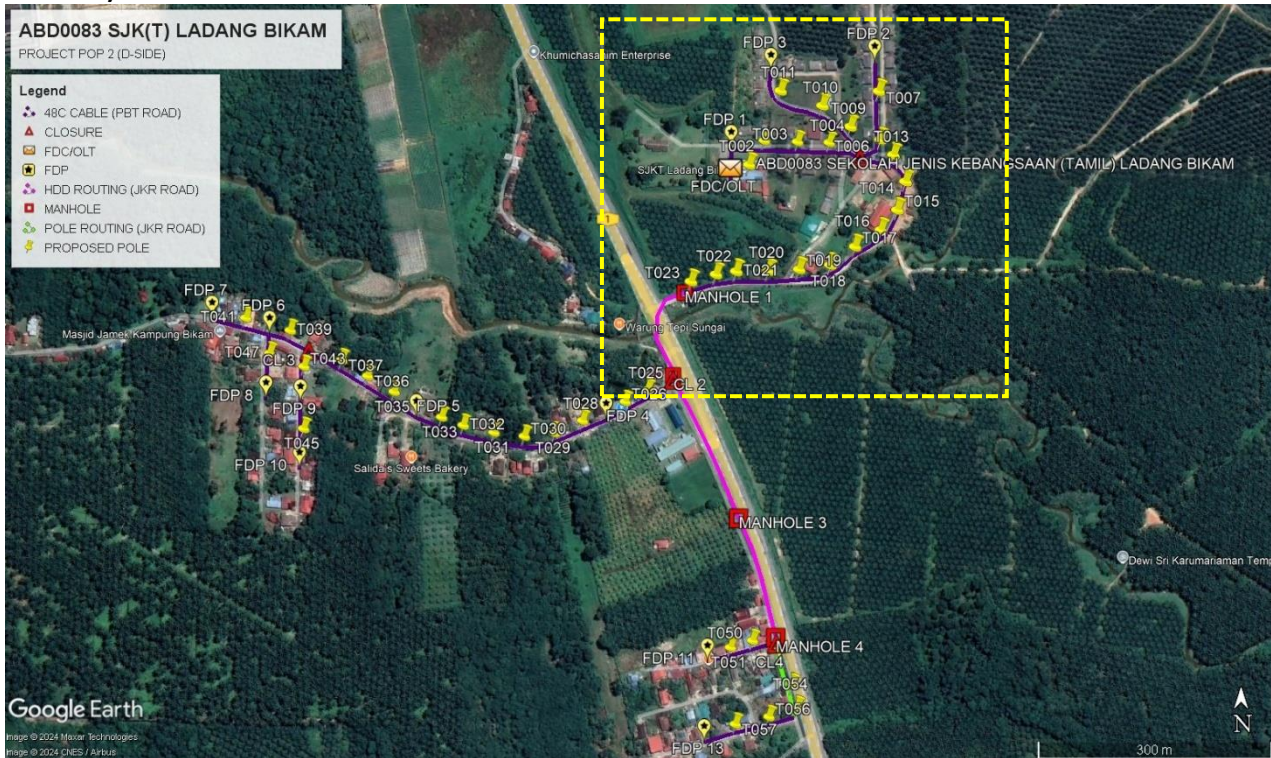


### 3.3 Site Plan KMZ Routing (All Local Authority)



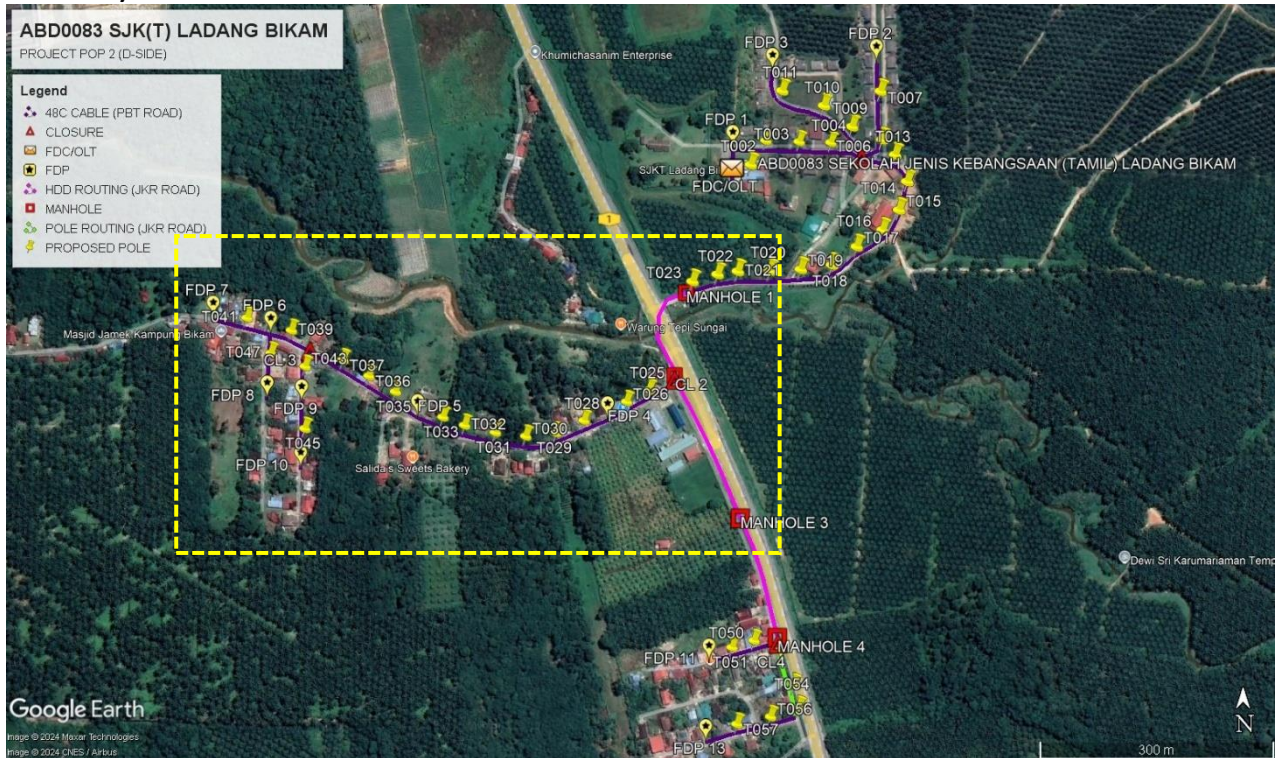
*Green Colour – JKR Road using new pole Method*  
*Purple Colour – PBT Road using new pole Method*  
*Magenta Colour – JKR Road using HDD Method*

**3.4 Site Plan – KMZ Routing (All site area)**  
**i) Route 1**



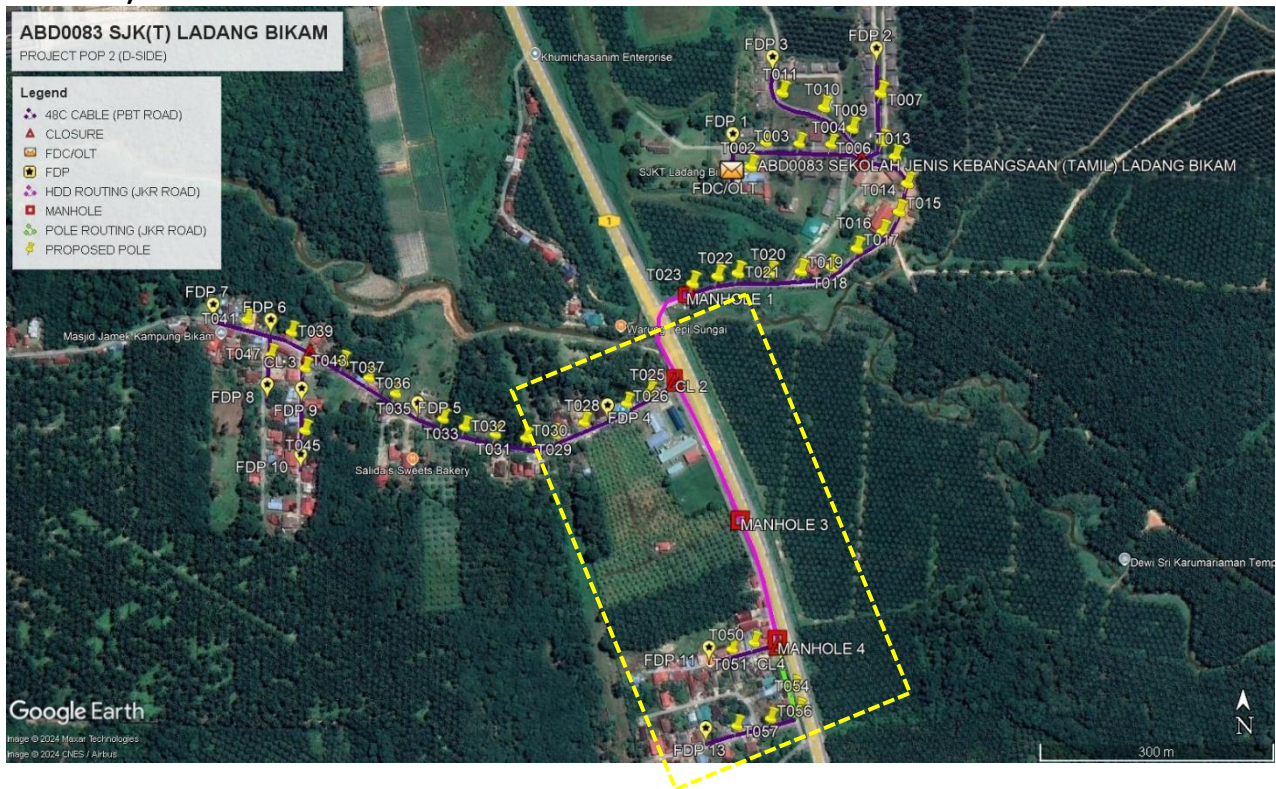
**Route 1.1**

ii) **Route 2**



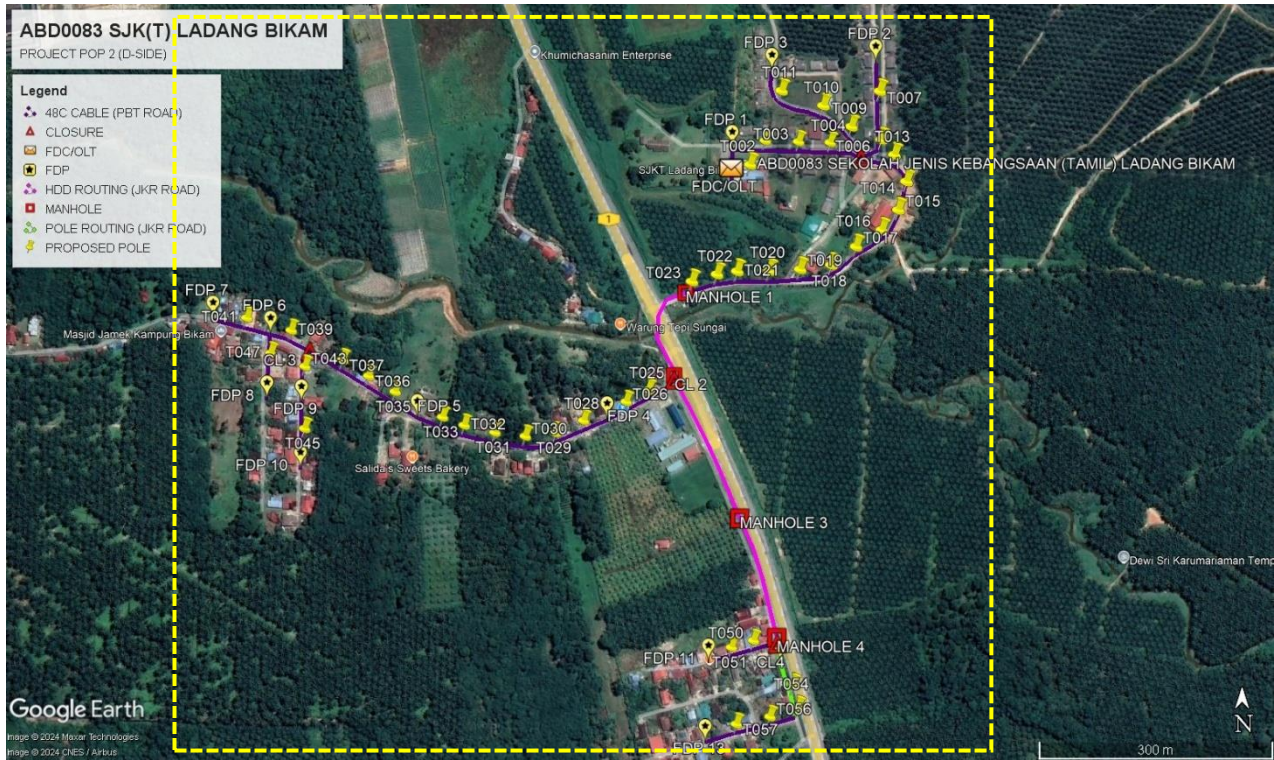
**Route 2.1**

iii) **Route 3**



**Route 3.1**

### 3.5 Site Plan – KMZ Routing (Proposed new)





PROJEK PENYEDIAAN DAN PENYELENGGARAAN POINT OF PRESENCE (POP)  
 FASA 2: HAB INFRASTRUKTUR GENTIAN OPTIK BERHAMPIRAN DENGAN  
 SEKOLAH, KAWASAN PERINDUSTRIAN, PREMIS KERAJAAN DAN KOMUNITI  
 SEKITARNYA OLEH KEMENTERIAN KOMUNIKASI MALAYSIA - ZON UTARA  
 (KKMM.400-11/17/132(1))



**4.0 PROPOSED NEW POLE LAT & LONG TABLE**

No.	Label	Pole & Manhole ID	Latitude	Longitude	Local Authority
1	FDC/OLT	T000	4.0476462	101.2981315	MAJLIS DAERAH TAPAH
2	FDP 1	T001	4.0480227	101.2981441	MAJLIS DAERAH TAPAH
3	FDP 2	T008	4.0490092	101.2997998	MAJLIS DAERAH TAPAH
4	FDP 3	T012	4.048909	101.2986025	MAJLIS DAERAH TAPAH
5	FDP 4	T027	4.0449022	101.2966994	MAJLIS DAERAH TAPAH
6	FDP 5	T034	4.0449285	101.2945092	MAJLIS DAERAH TAPAH
7	FDP 6	T040	4.0458851	101.2928153	MAJLIS DAERAH TAPAH
8	FDP 7	T042	4.0460612	101.2921518	MAJLIS DAERAH TAPAH
9	FDP 8	T048	4.0451414	101.2927738	MAJLIS DAERAH TAPAH
10	FDP 9	T044	4.0450973	101.2931715	MAJLIS DAERAH TAPAH
11	FDP 10	T046	4.0443378	101.2931601	MAJLIS DAERAH TAPAH
12	FDP 11	T052	4.042118	101.2978692	MAJLIS DAERAH TAPAH
13	FDP 12	T053	4.0421081	101.2986971	JKR PERSEKUTUAN
14	FDP 13	T058	4.0411909	101.2978314	MAJLIS DAERAH TAPAH
15	CL1	T005	4.0479289	101.299633	MAJLIS DAERAH TAPAH
16	CL 2	T024	4.0453704	101.297478	JKR PERSEKUTUAN
17	CL 3	T038	4.0457005	101.2932722	MAJLIS DAERAH TAPAH
18	CL4	T049	4.042337	101.2986672	JKR PERSEKUTUAN
19	MH01	MH01	4.0463728	101.2976061	MAJLIS DAERAH TAPAH
20	MH02	MH02	4.0454227	101.2974737	JKR PERSEKUTUAN
21	MH03	MH03	4.0437794	101.2982304	JKR PERSEKUTUAN
22	MH04	MH04	4.0424062	101.2986572	JKR PERSEKUTUAN

#### 4.1 OVERALL, POLE (PROPOSED NEW POLE)

No.	Pole & Manhole ID	Distance	Latitude	Longitude	Local Authority
1	T000	0	4.0476462	101.2981315	MAJLIS DAERAH TAPAH
2	T001	42	4.0480227	101.2981441	MAJLIS DAERAH TAPAH
3	T002	39	4.0480106	101.2984933	MAJLIS DAERAH TAPAH
4	T003	43	4.0479969	101.2988773	MAJLIS DAERAH TAPAH
5	T004	41	4.0479879	101.2992427	MAJLIS DAERAH TAPAH
6	T005	43	4.0479289	101.299633	MAJLIS DAERAH TAPAH
7	T006	25	4.0480085	101.2998311	MAJLIS DAERAH TAPAH
8	T007	55	4.0485655	101.2998129	MAJLIS DAERAH TAPAH
9	T008	55	4.0490092	101.2997998	MAJLIS DAERAH TAPAH
10	T009	28	4.0481586	101.2994835	MAJLIS DAERAH TAPAH
11	T010	45	4.0484	101.2991604	MAJLIS DAERAH TAPAH
12	T011	57	4.048572	101.2986779	MAJLIS DAERAH TAPAH
13	T012	40	4.048909	101.2986025	MAJLIS DAERAH TAPAH
14	T013	41	4.0478339	101.2999801	MAJLIS DAERAH TAPAH
15	T014	37	4.0475275	101.3001202	MAJLIS DAERAH TAPAH
16	T015	38	4.0472003	101.3000252	MAJLIS DAERAH TAPAH
17	T016	33	4.0469699	101.2998352	MAJLIS DAERAH TAPAH
18	T017	39	4.0467791	101.2995377	MAJLIS DAERAH TAPAH
19	T018	39	4.046568	101.2992524	MAJLIS DAERAH TAPAH
20	T019	40	4.0465182	101.2988921	MAJLIS DAERAH TAPAH
21	T020	39	4.0465012	101.2985376	MAJLIS DAERAH TAPAH
22	T021	41	4.0464953	101.2981661	MAJLIS DAERAH TAPAH
23	T022	26	4.0464603	101.2979324	MAJLIS DAERAH TAPAH
24	T023	33	4.046378	101.2976439	MAJLIS DAERAH TAPAH
25	T024	1	4.0453704	101.297478	JKR PERSEKUTUAN
26	T025	44	4.0451438	101.2971473	MAJLIS DAERAH TAPAH
27	T026	32	4.0450083	101.2968878	MAJLIS DAERAH TAPAH
28	T027	24	4.0449022	101.2966994	MAJLIS DAERAH TAPAH
29	T028	36	4.0447906	101.2963955	MAJLIS DAERAH TAPAH
30	T029	39	4.0446498	101.2960723	MAJLIS DAERAH TAPAH
31	T030	39	4.0446109	101.2957235	MAJLIS DAERAH TAPAH
32	T031	39	4.0446559	101.2953726	MAJLIS DAERAH TAPAH
33	T032	40	4.0447378	101.2950182	MAJLIS DAERAH TAPAH
34	T033	30	4.044832	101.2947677	MAJLIS DAERAH TAPAH
35	T034	31	4.0449285	101.2945092	MAJLIS DAERAH TAPAH
36	T035	39	4.0451234	101.2942212	MAJLIS DAERAH TAPAH
37	T036	39	4.0453053	101.2939158	MAJLIS DAERAH TAPAH
38	T037	39	4.0454889	101.2936156	MAJLIS DAERAH TAPAH
39	T038	45	4.0457005	101.2932722	MAJLIS DAERAH TAPAH
40	T039	31	4.0458287	101.293021	MAJLIS DAERAH TAPAH
41	T040	24	4.0458851	101.2928153	MAJLIS DAERAH TAPAH

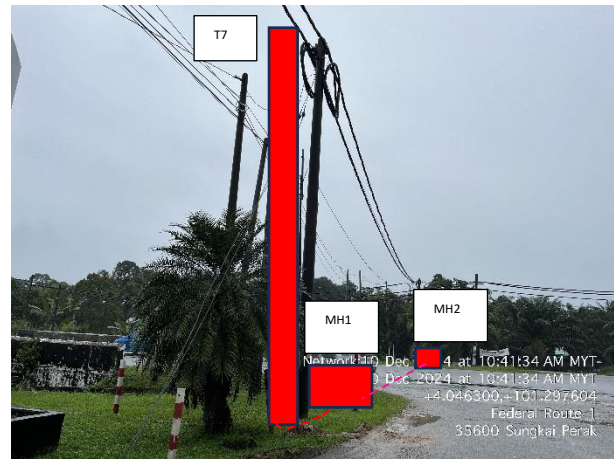
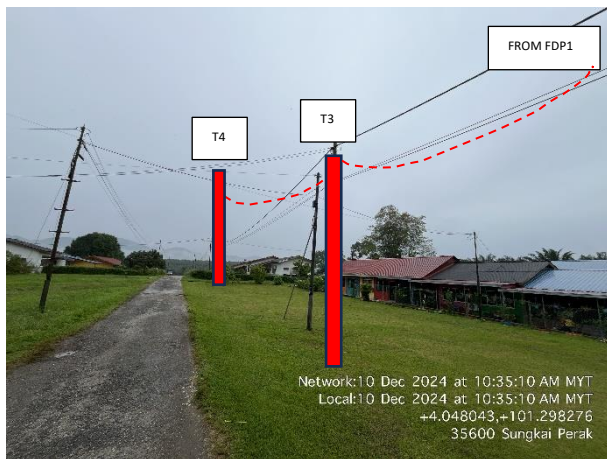
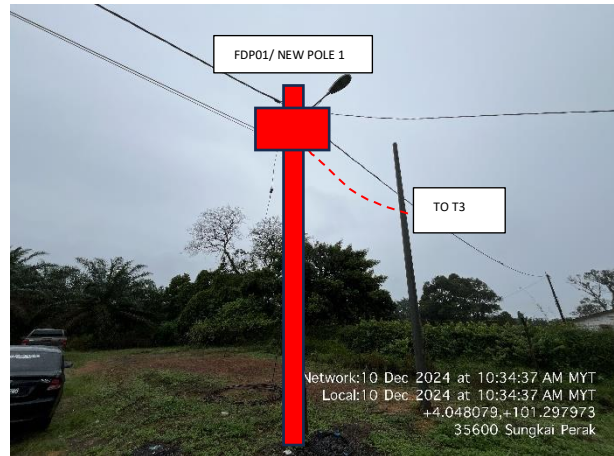


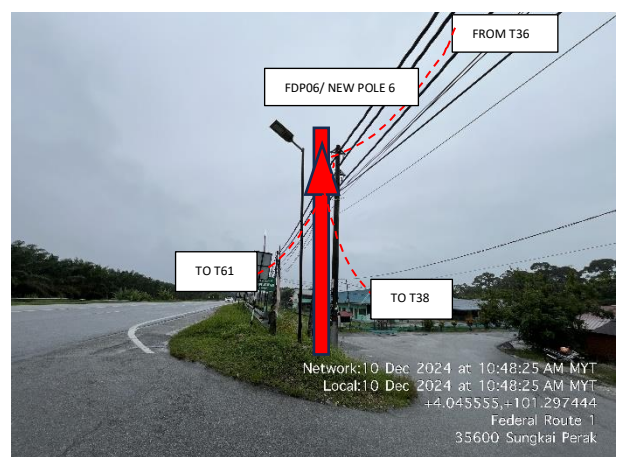
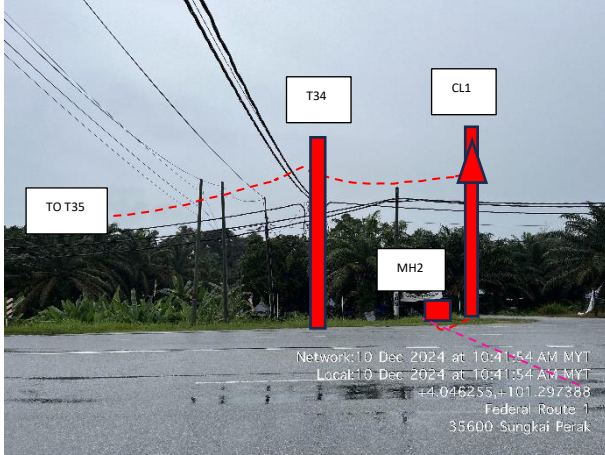
PROJEK PENYEDIAAN DAN PENYELENGGARAAN POINT OF PRESENCE (POP)  
 FASA 2: HAB INFRASTRUKTUR GENTIAN OPTIK BERHAMPIRAN DENGAN  
 SEKOLAH, KAWASAN PERINDUSTRIAN, PREMIS KERAJAAN DAN KOMUNITI  
 SEKITARNYA OLEH KEMENTERIAN KOMUNIKASI MALAYSIA - ZON UTARA  
 (KKMM.400-11/17/132(1))

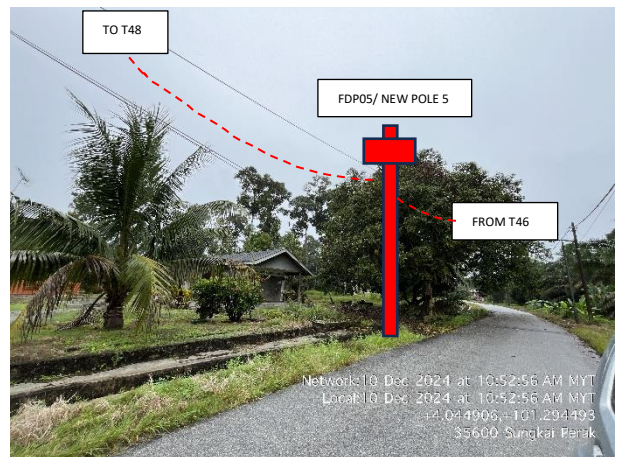
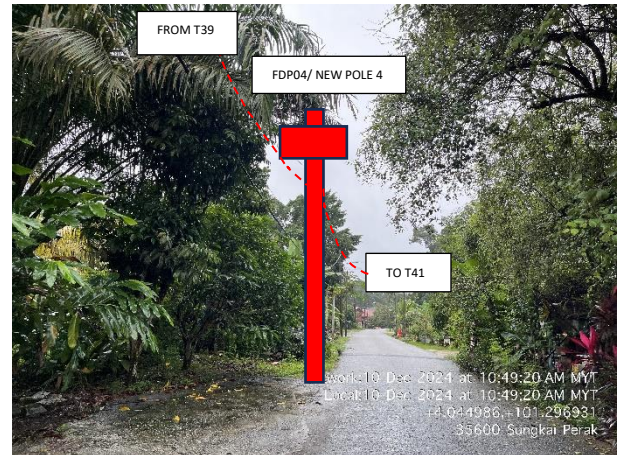
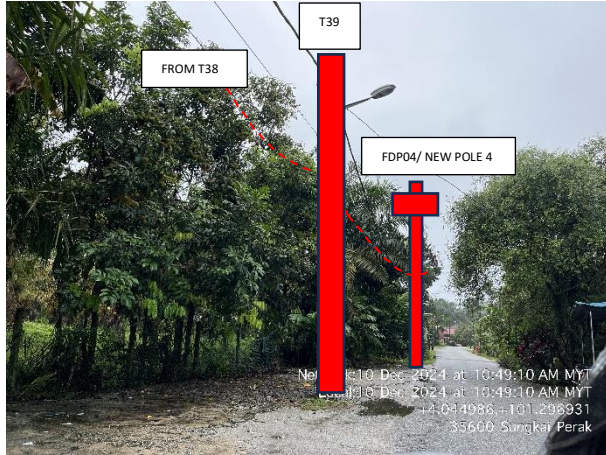
**STEADCOM**  
 A member of OCK Group Berhad

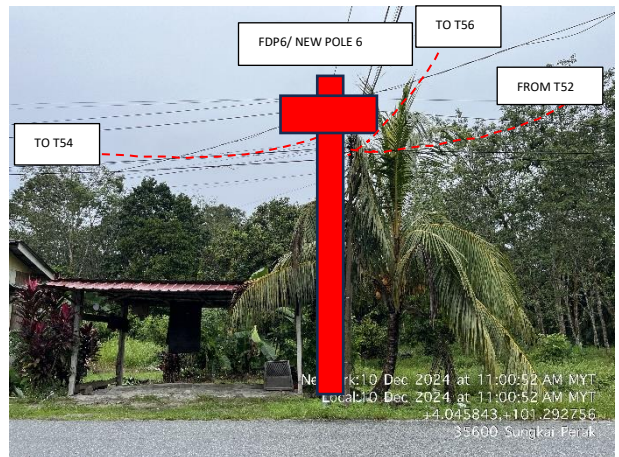
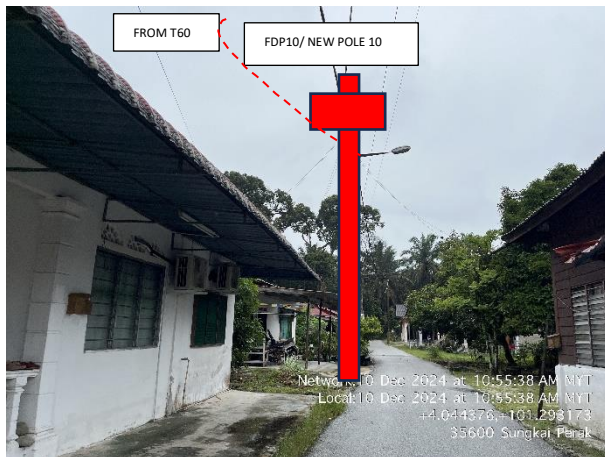
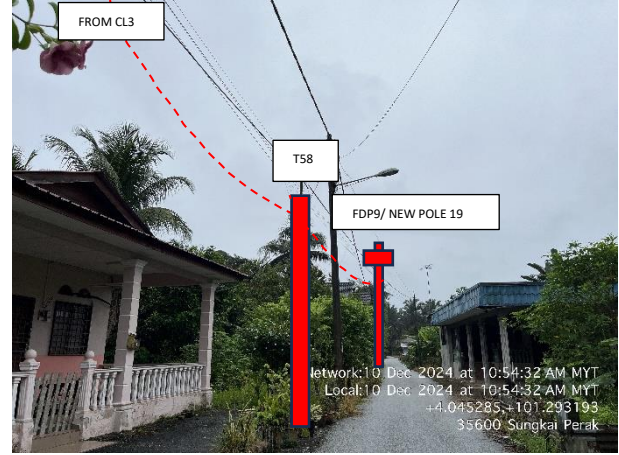
42	T041	35	4.0459721	101.2925086	MAJLIS DAERAH TAPAH
43	T042	41	4.0460612	101.2921518	MAJLIS DAERAH TAPAH
44	T043	33	4.0454138	101.2931801	MAJLIS DAERAH TAPAH
45	T044	35	4.0450973	101.2931715	MAJLIS DAERAH TAPAH
46	T045	44	4.0446992	101.2931757	MAJLIS DAERAH TAPAH
47	T046	40	4.0443378	101.2931601	MAJLIS DAERAH TAPAH
48	T047	35	4.0455659	101.2927839	MAJLIS DAERAH TAPAH
49	T048	47	4.0451414	101.2927738	MAJLIS DAERAH TAPAH
50	T049	1	4.042337	101.2986672	JKR PERSEKUTUAN
51	T050	36	4.0422612	101.2983574	MAJLIS DAERAH TAPAH
52	T051	30	4.0421829	101.2981031	MAJLIS DAERAH TAPAH
53	T052	27	4.042118	101.2978692	MAJLIS DAERAH TAPAH
54	T053	27	4.0421081	101.2986971	JKR PERSEKUTUAN
55	T054	42	4.0417489	101.2988152	MAJLIS DAERAH TAPAH
56	T055	28	4.0414914	101.2988721	MAJLIS DAERAH TAPAH
57	T056	38	4.0413856	101.2985468	MAJLIS DAERAH TAPAH
58	T057	44	4.0413006	101.2981596	MAJLIS DAERAH TAPAH
59	T058	38	4.0411909	101.2978314	MAJLIS DAERAH TAPAH
60	MH01	0	4.0463728	101.2976061	MAJLIS DAERAH TAPAH
61	MH02	130	4.0454227	101.2974737	JKR PERSEKUTUAN
62	MH03	195	4.0437794	101.2982304	JKR PERSEKUTUAN
63	MH04	157	4.0424062	101.2986572	JKR PERSEKUTUAN

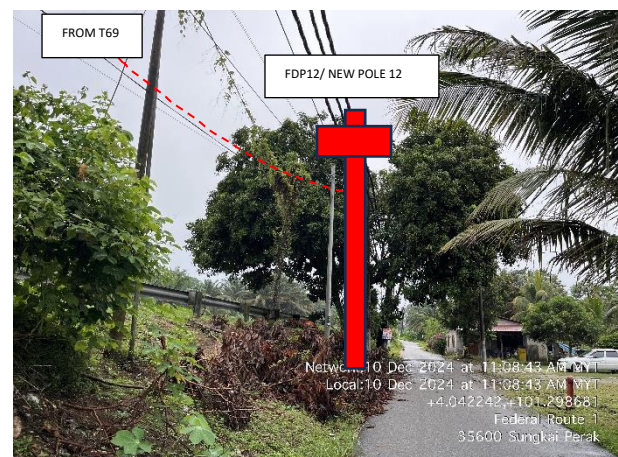
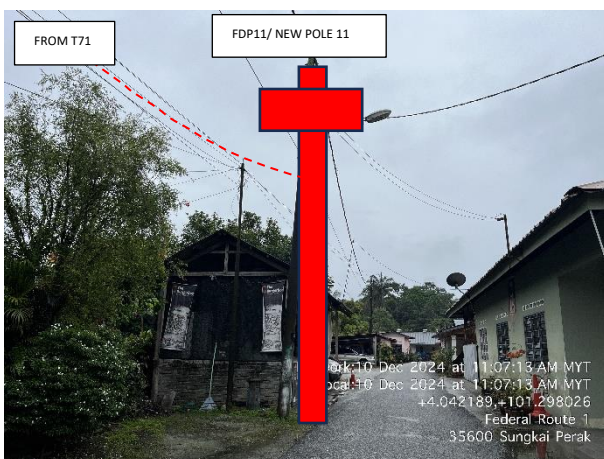
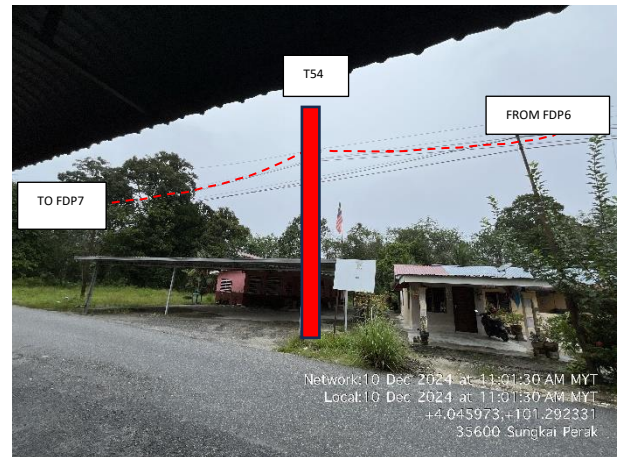
5.0 SITE PHOTOS – PROPOSED NEW POLE









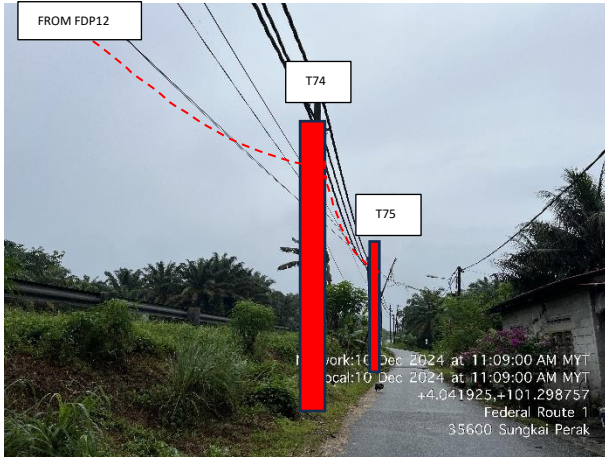






PROJEK PENYEDIAAN DAN PENYELENGGARAAN POINT OF PRESENCE (POP)  
FASA 2: HAB INFRASTRUKTUR GENTIAN OPTIK BERHAMPIRAN DENGAN  
SEKOLAH, KAWASAN PERINDUSTRIAN, PREMIS KERAJAAN DAN KOMUNITI  
SEKITARNYA OLEH KEMENTERIAN KOMUNIKASI MALAYSIA - ZON UTARA  
(KKMM.400-11/17/132(1))



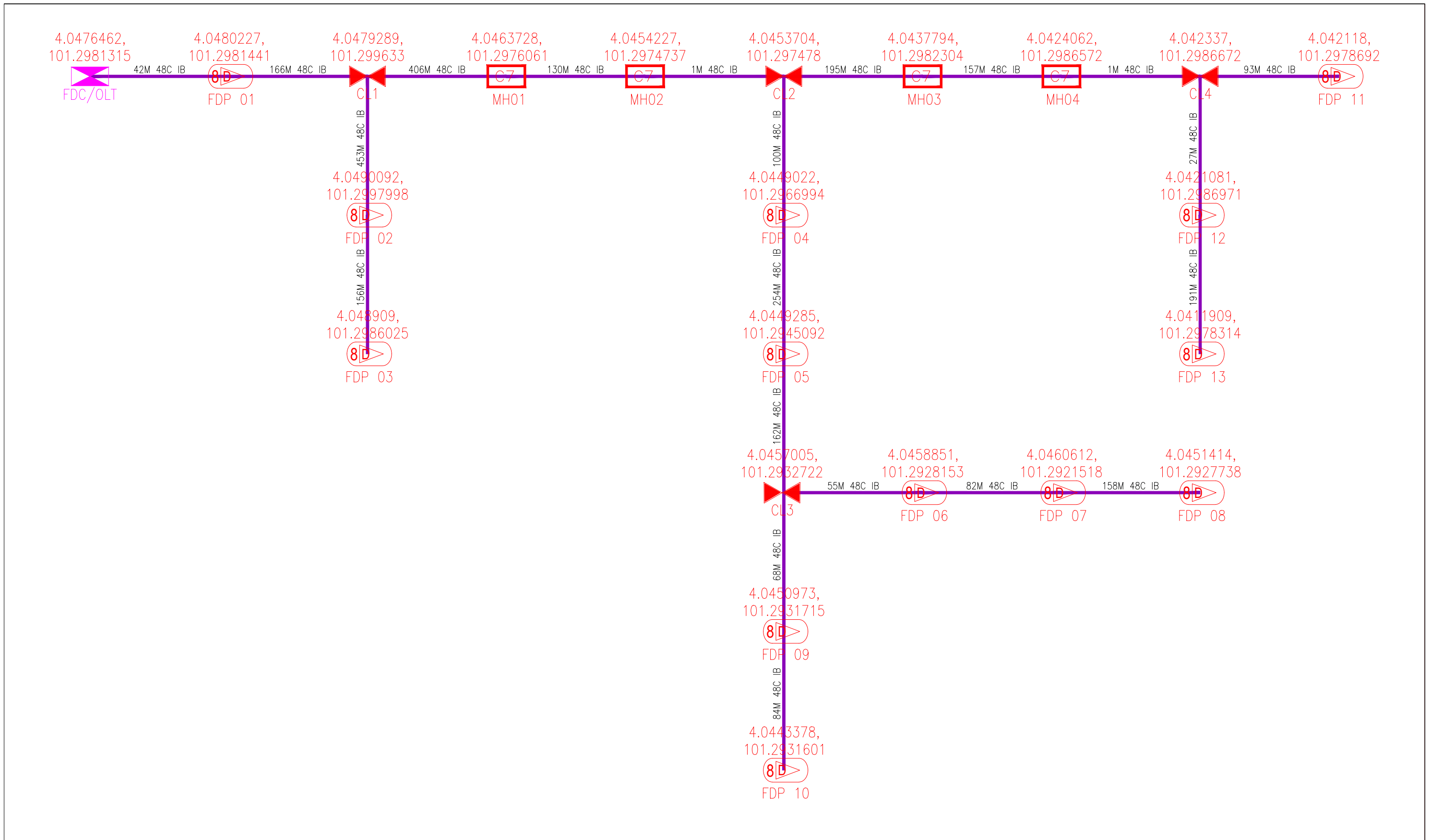
A member of OCE Group Berhad



	<p>PROJEK PENYEDIAAN DAN PENYELENGGARAAN POINT OF PRESENCE (POP)  FASA 2: HAB INFRASTRUKTUR GENTIAN OPTIK BERHAMPIRAN DENGAN  SEKOLAH, KAWASAN PERINDUSTRIAN, PREMIS KERAJAAN DAN KOMUNITI  SEKITARNYA OLEH KEMENTERIAN KOMUNIKASI MALAYSIA - ZON UTARA  (KKMM.400-11/17/132(1))</p>	 A member of OCK Group Berhad
---	--	---

**6.0 3<sup>RD</sup> PARTIES DEPENDENCIES**

NO	LOCAL COUNCIL / AUTHORITY	REMARK
1	JKR Batang Padang	
2	Majlis Daerah Tapah	



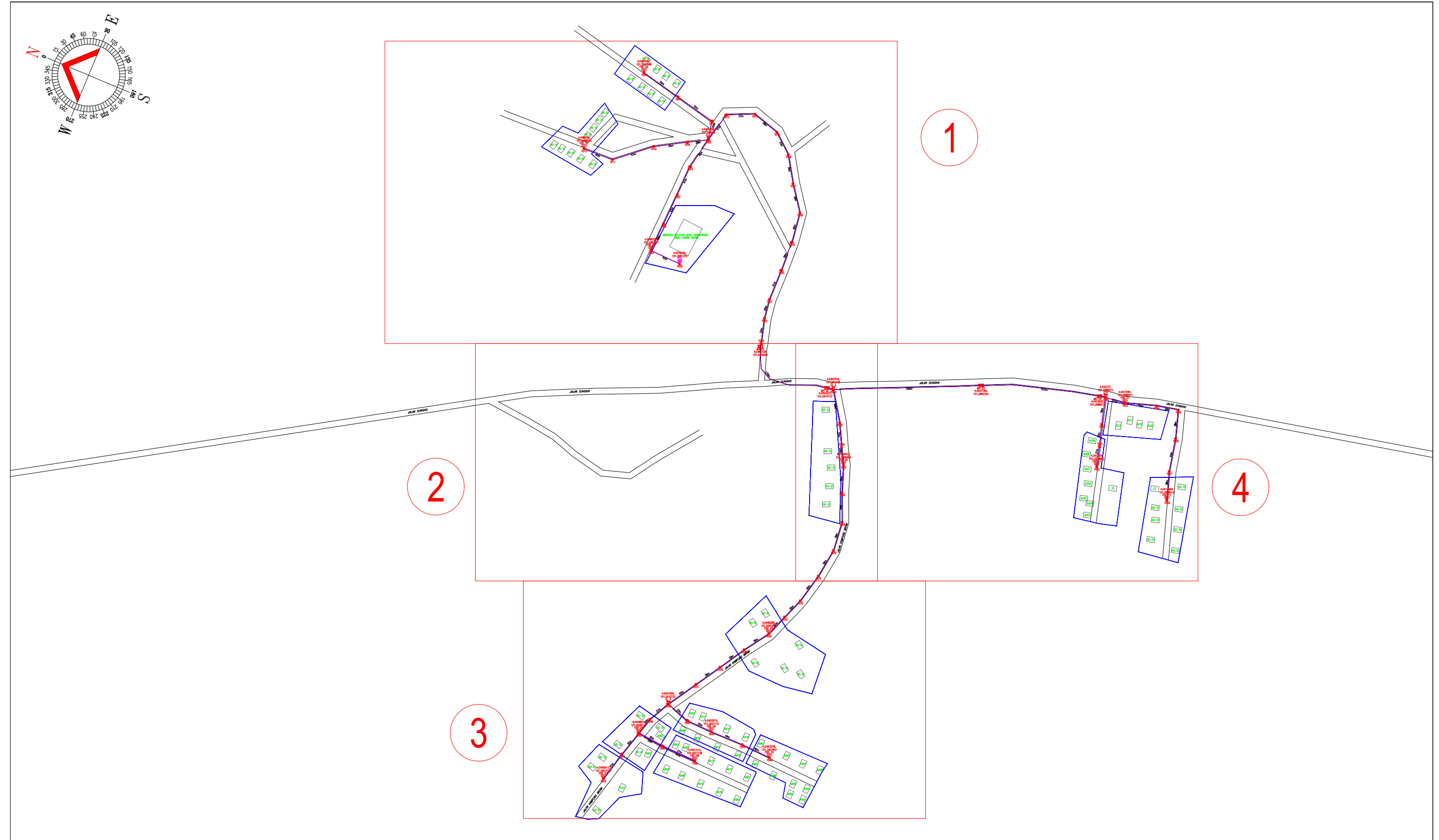
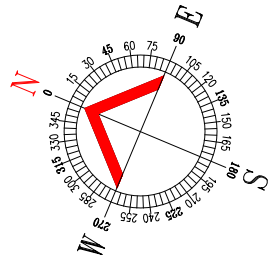
LEGEND	NOS.	NOS.	NOS.	NOS.	NOS.	NOS.	NOS.	NOS.			
	12C FOC		Installed 1:4 splitter in FDC		Installed Pole (9m)		New Manhole(JRC7)		Tension Small / Tension Big		MH NO.
	24C FOC		FDP with (1:8) splitter		Installed Riser		House Number		Existing Manhole		Existing TNB Pole NO.
	48C FOC		Closure		Suspension Big		Existing TNB Pole		Closure NO.		New Pole NO.
	96C FOC		New Manhole (PIT)		Suspension Small		LOOP		FDP NO.		SEE A-A in this page
	144C FOC		Installed Pole (7.5M)		FDC		FDP Boundary		FDC NO.		SEE SHEET XXX

<b>KEY PLAN :</b>  POP2 PROJECT IN PERAK	<b>MAIN CONTRACTOR</b>  	<b>SUB-CONTRACTOR :</b>  A member of FOCK Group Berhad	<b>PROJECT TITLE :</b> CONTRACTOR FOR SURVEY, TECHNICAL PROPOSAL AND WAYLEAVE,& PERMIT APPROVAL -POP2 PROJECT	<b>DRAWING TITLE:</b> SINGLE LINE DRAWING ABD0083 SEKOLAH JENIS KEBANGSAAN (TAMIL) LADANG BIKAM	<b>Design By :</b> FITRI <b>Drawn By :</b> FITRI <b>Checked By :</b> AMSYAR	<b>Date :</b> 17/12/2024 <b>Scale :</b> N.T.S <b>Job Number :</b> JOB_NUMBER
				<b>PROJECT PHASE:</b> POP2	<b>DRAWING NUMBER :</b> ABD0083-SLD-01	<b>Sheet :</b> 1/1

THIS PRINT AND ITS COPYRIGHT ARE THE PROPERTY OF ALLO TECHNOLOGY SDN BHD

Size : A3

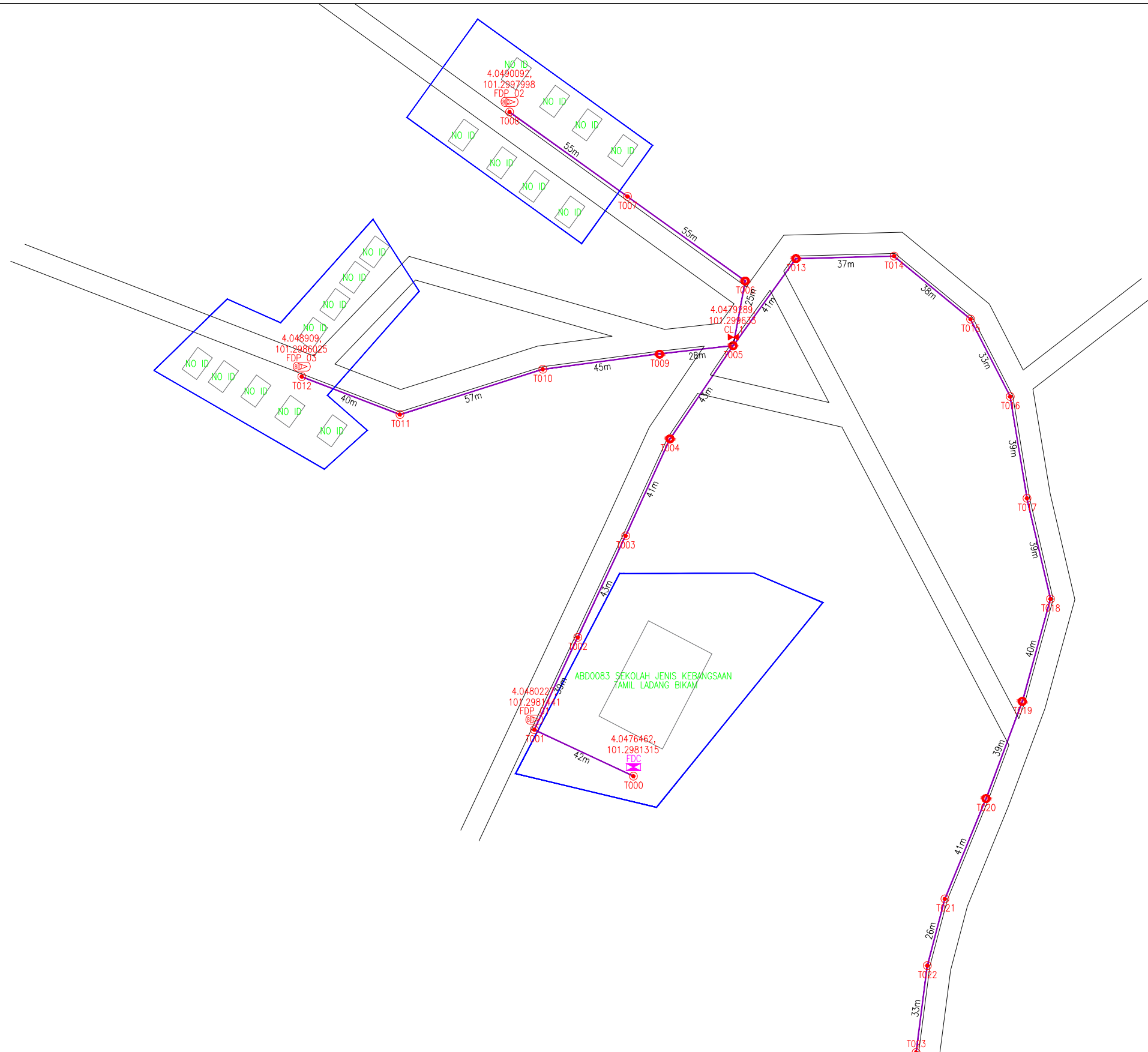
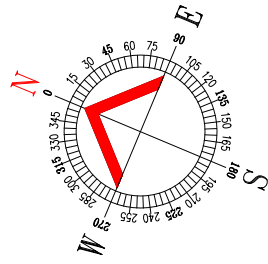


LEGEND	NOS.	NOS.	NOS.	NOS.	NOS.	NOS.	NOS.	NOS.	
	12C FOC		Installed Pole (9m)		New Manhole(JRC7)		Tension Small / Tension Big		MH NO.
	24C FOC		Installed Riser		House Number		Existing Manhole		Existing TNB Pole NO.
	48C FOC		Suspension Big		Existing TNB Pole		Closure NO.		New Pole NO.
	96C FOC		New Manhole (PIT)		LOOP		FDP NO.		SEE A-A in this page
	144C FOC		Installed Pole (7.5M)		FDP Boundary		FDC NO.		SEE SHEET XXX

ACTUAL HOMEPASS :

<b>KEY PLAN :</b>  POP2 PROJECT IN PERAK	<b>MAIN CONTRACTOR</b>  	<b>SUB-CONTRACTOR :</b>  A member of FOCK Group Berhad	<b>PROJECT TITLE :</b> CONTRACTOR FOR SURVEY, TECHNICAL PROPOSAL AND WAYLEAVE, & PERMIT APPROVAL -POP2 PROJECT	<b>DRAWING TITLE:</b> CONSTRUCTION DRAWING ABD0083 SEKOLAH JENIS KEBANGSAAN (TAMIL) LADANG BIKAM	<b>Design By :</b> FITRI <b>Drawn By :</b> FITRI <b>Checked By :</b> AMSYAR	<b>Date :</b> 17/12/2024 <b>Scale :</b> N.T.S <b>Job Number :</b> JOB_NUMBER
				<b>PROJECT PHASE:</b> POP2	<b>DRAWING NUMBER :</b> ABD0083-CD-01	<b>Sheet :</b> INDEX  <b>Size :</b> A3

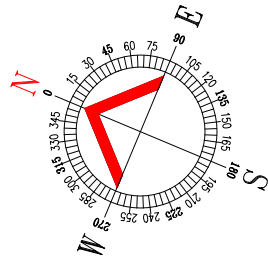
THIS PRINT AND ITS COPYRIGHT ARE THE PROPERTY OF ALLO TECHNOLOGY SDN BHD



LEGEND	NOS.	NOS.	NOS.	NOS.	NOS.	NOS.	NOS.	NOS.	
	12C FOC		Installed 1:4 splitter in FDC		Installed Pole (9m)		New Manhole(JRC7)		Tension Small / Tension Big
	24C FOC		FDP with (1:8) splitter		Installed Riser		House Number		Existing TNB Pole NO.
	48C FOC		Closure		Suspension Big		Existing TNB Pole		New Pole NO.
	96C FOC		New Manhole (PIT)		Suspension Small		LOOP		FDP NO.
	144C FOC		Installed Pole (7.5M)		FDC		FDP Boundary		SEE A-A in this page
									SEE SHEET XXX

ACTUAL HOMEPASS :

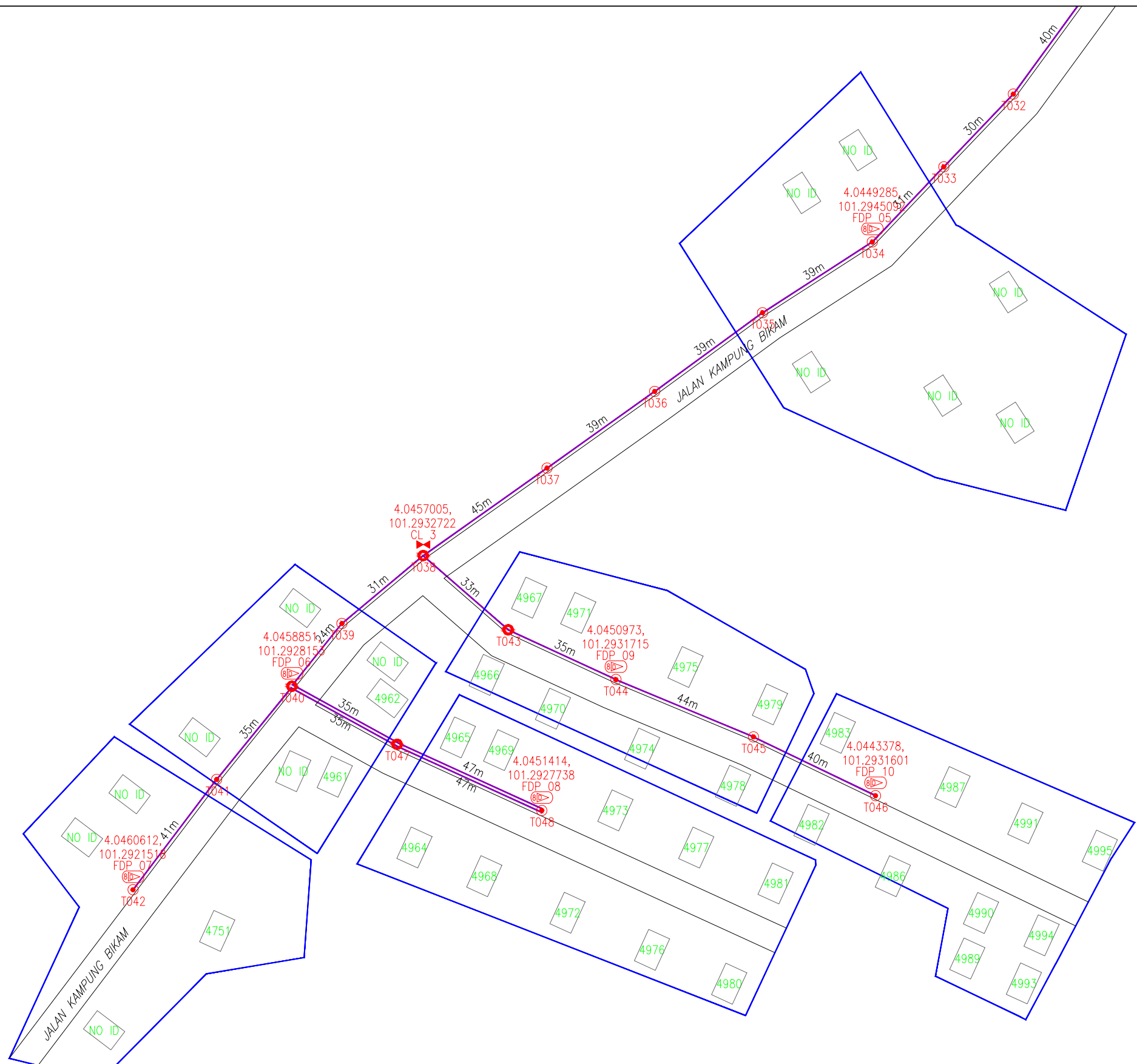
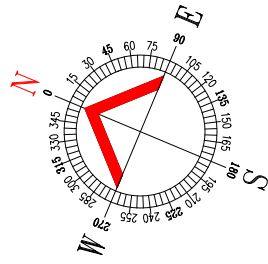
<b>KEY PLAN :</b>  POP2 PROJECT IN PERAK	<b>MAIN CONTRACTOR</b>  	<b>SUB-CONTRACTOR :</b>  A member of FOCK Group Berhad	<b>PROJECT TITLE :</b> CONTRACTOR FOR SURVEY, TECHNICAL PROPOSAL AND WAYLEAVE, & PERMIT APPROVAL -POP2 PROJECT	<b>DRAWING TITLE:</b> CONSTRUCTION DRAWING ABD0083 SEKOLAH JENIS KEBANGSAAN (TAMIL) LADANG BIKAM	<b>Design By :</b> FITRI <b>Drawn By :</b> FITRI <b>Checked By :</b> AMSYAR	<b>Date :</b> 17/12/2024 <b>Scale :</b> N.T.S <b>Job Number :</b> JOB_NUMBER
				<b>PROJECT PHASE:</b> POP2	<b>DRAWING NUMBER :</b> ABD0083-CD-01	<b>Sheet :</b> 01/04
THIS PRINT AND ITS COPYRIGHT ARE THE PROPERTY OF ALLO TECHNOLOGY SDN BHD						<b>Size :</b> A3



LEGEND	NOS.	NOS.	NOS.	NOS.	NOS.	NOS.	NOS.	NOS.	
	12C FOC		Installed Pole (9m)		New Manhole(JRC7)		Tension Small / Tension Big		MH NO.
	24C FOC		Installed Riser		House Number		Existing Manhole		Existing TNB Pole NO.
	48C FOC		Suspension Big		Existing TNB Pole		Closure NO.		New Pole NO.
	96C FOC		Suspension Small		LOOP		FDP NO.		SEE A-A in this page
	144C FOC		FDC		FDP Boundary		FDC NO.		SEE SHEET XXX

ACTUAL HOMEPASS :

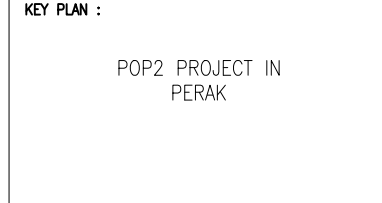
<b>KEY PLAN :</b>  POP2 PROJECT IN PERAK	<b>MAIN CONTRACTOR</b>  	<b>SUB-CONTRACTOR :</b>  A member of FOCK Group Berhad	<b>PROJECT TITLE :</b> CONTRACTOR FOR SURVEY, TECHNICAL PROPOSAL AND WAYLEAVE, & PERMIT APPROVAL -POP2 PROJECT	<b>DRAWING TITLE:</b> CONSTRUCTION DRAWING ABD0083 SEKOLAH JENIS KEBANGSAAN (TAMIL) LADANG BIKAM	<b>Design By :</b> FITRI <b>Date :</b> 17/12/2024
				<b>PROJECT PHASE:</b> POP2	<b>Drawn By :</b> FITRI <b>Scale :</b> N.T.S <b>Checked By :</b> AMSYAR <b>Job Number :</b> JOB_NUMBER
				<b>DRAWING NUMBER :</b> ABD0083-CD-01	<b>Sheet :</b> 02/04
				THIS PRINT AND ITS COPYRIGHT ARE THE PROPERTY OF ALLO TECHNOLOGY SDN BHD	<b>Size :</b> A3



LEGEND	NOS.	NOS.	NOS.	NOS.	NOS.	NOS.	NOS.	
12C FOC	Installed 1:4 splitter in FDC	Installed Pole (9m)	C7	New Manhole(JRC7)	TS / TB	Tension Small / Tension Big	MH1	MH NO.
24C FOC	FDP with (1:8) splitter	Installed Riser	#	House Number	Existing Manhole	TKS-1	Existing TNB Pole NO.	
48C FOC	Closure	Suspension Big	Existing TNB Pole	LOOP	C01	Closure NO.	P001	New Pole NO.
96C FOC	New Manhole (PIT)	Suspension Small	LOOP	FDP1	FDP NO.		SEE A-A in this page	
144C FOC	Installed Pole (7.5M)	FDC	FDP Boundary	FDC	FDC NO.		SEE SHEET XXX	

ACTUAL HOMEPASS :

**KEY PLAN :**  
POP2 PROJECT IN PERAK



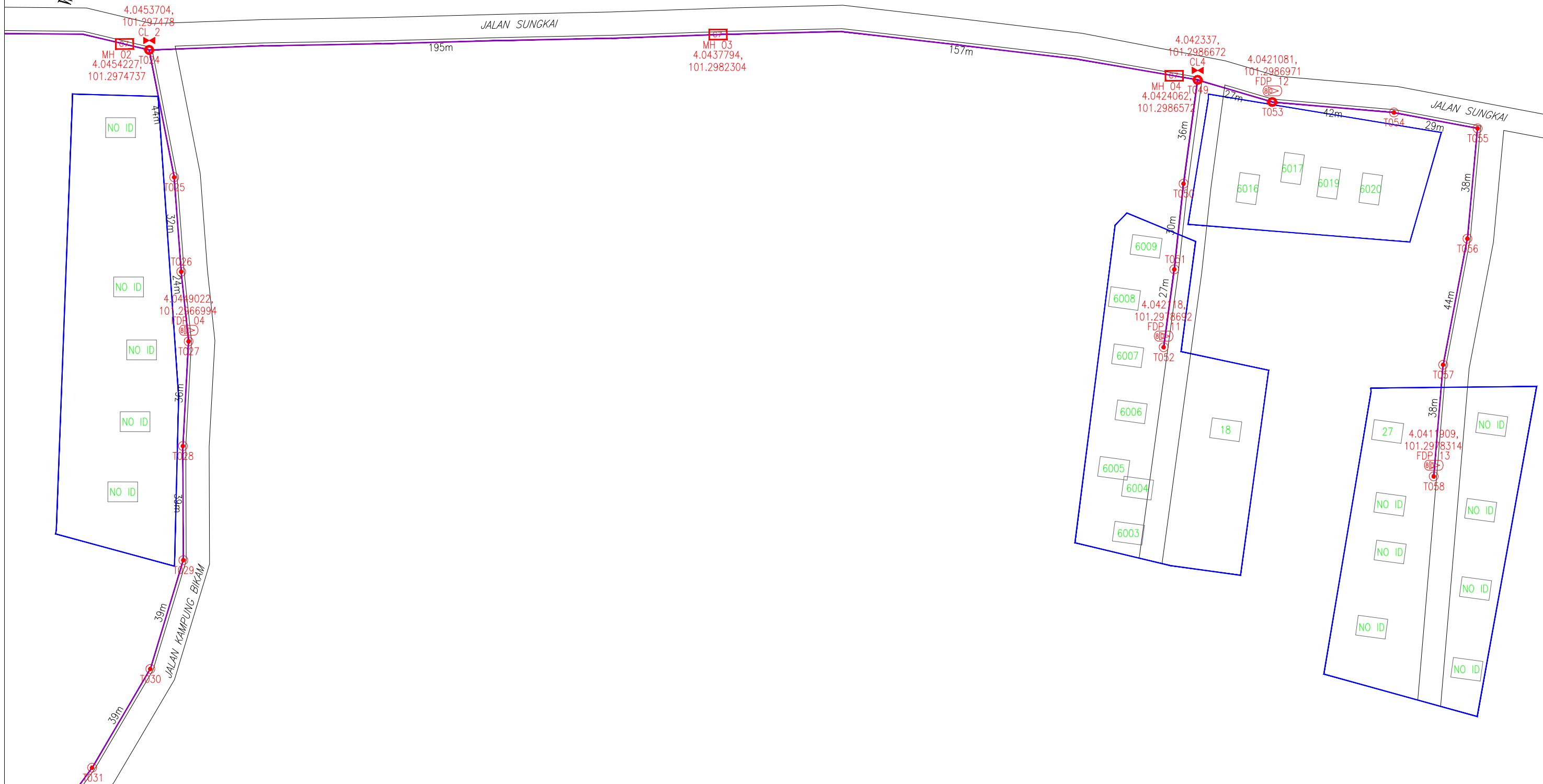
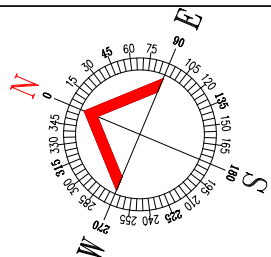
**SUB-CONTRACTOR :**  
CONTRACTOR FOR SURVEY, TECHNICAL PROPOSAL AND WAYLEAVE, & PERMIT APPROVAL -POP2 PROJECT

**PROJECT TITLE :**  
CONSTRUCTION DRAWING ABD0083 SEKOLAH JENIS KEBANGSAAN (TAMIL) LADANG BIKAM

**DRAWING TITLE :**  
CONSTRUCTION DRAWING ABD0083 SEKOLAH JENIS KEBANGSAAN (TAMIL) LADANG BIKAM

**PROJECT PHASE :**  
POP2

<b>Design By :</b> FITRI	<b>Date :</b> 17/12/2024
<b>Drawn By :</b> FITRI	<b>Scale :</b> N.T.S
<b>Checked By :</b> AMSYAR	<b>Job Number :</b> JOB_NUMBER
<b>DRAWING NUMBER :</b> ABD0083-CD-01	<b>Sheet :</b> 03/04
<b>THIS PRINT AND ITS COPYRIGHT ARE THE PROPERTY OF ALLO TECHNOLOGY SDN BHD</b>	
<b>Size :</b> A3	



LEGEND	NOS.	NOS.	NOS.	NOS.	NOS.	NOS.	NOS.	
12C FOC	Installed 1:4 splitter in FDC	Installed Pole (9m)	C7	New Manhole(JRC7)	TS / TB	Tension Small / Tension Big	MH1	MH NO.
24C FOC	FDP with (1:8) splitter	Installed Riser	#	House Number	TKS-1	Existing Manhole	TKS-1	Existing TNB Pole NO.
48C FOC	Closure	Suspension Big	●	Existing TNB Pole	P001	New Pole NO.	P001	New Pole NO.
96C FOC	New Manhole (PIT)	Suspension Small	○	LOOP	FDP1	FDP NO.	(A)	SEE A-A in this page
144C FOC	Installed Pole (7.5M)	FDC	○	FDP Boundary	FDC	FDC NO.	(A)	SEE SHEET XXX

ACTUAL HOMEPASS :

KEY PLAN : POP2 PROJECT IN PERAK	MAIN CONTRACTOR <b>APEX COMMUNICATIONS SDN BHD</b> PRIVASAT	SUB-CONTRACTOR : <b>STEADCOM</b> A member of FOCK Group Berhad	PROJECT TITLE : CONTRACTOR FOR SURVEY, TECHNICAL PROPOSAL AND WAYLEAVE, & PERMIT APPROVAL -POP2 PROJECT	DRAWING TITLE: CONSTRUCTION DRAWING ABD0083 SEKOLAH JENIS KEBANGSAAN (TAMIL) LADANG BIKAM	Design By : FITRI	Date : 17/12/2024
				PROJECT PHASE: POP2	Checked By : AMSYAR	Job Number : JOB_NUMBER
				DRAWING NUMBER : ABD0083-CD-01	Sheet : 04/04	
				THIS PRINT AND ITS COPYRIGHT ARE THE PROPERTY OF ALLO TECHNOLOGY SDN BHD		Size : A3