

## TECHNICAL PROPOSAL

### POP2 ABD9003 SEKOLAH JENIS KEBANGSAAN (TAMIL) LADANG KOTA BAHROE (D-SIDE)

Company Name	:	WCWL COMMUNICATIONS SDN BHD
Company Address	:	127, Jalan PUJ 3/3, Taman Puncak Jalil 43300 Subang Jaya Selangor
Prepared By	:	Nur Syahidah Izzatie
Date	:	13/11/2024



POINT A

POINT B

#### Starting Point

Site / Boundary Name	:	SEKOLAH JENIS KEBANGSAAN (TAMIL) LADANG KOTA BAHROE
Address	:	Jalan Kota Baharu
District	:	Teja
Postcode	:	31600
State	:	Perak
GPS Coordinate	:	4.426272, 101.130500
LRD	:	A

#### End Point

Site / Boundary Name	:	SEKOLAH JENIS KEBANGSAAN (TAMIL) LADANG KOTA BAHROE
Address	:	Jalan Kota Baharu
District	:	Teja
Postcode	:	31600
State	:	Perak
GPS Coordinate	:	4.435175, 101.117839
LRD	:	B



PROJEK PENYEDIAAN DAN PENYELENGGARAAN POINT OF PRESENCE (POP) FASA 2: HAB INFRASTRUKTUR GENTIAN OPTIK BERHAMPIRAN DENGAN SEKOLAH, KAWASAN PERINDUSTRIAN, PREMIS KERAJAAN DAN KOMUNITI SEKITARNYA OLEH KEMENTERIAN KOMUNIKASI MALAYSIA - ZON UTARA (KKMM.400-11/17/132(1))



### Work Summary

No	Proposed Distance and Method	Unit	Qty
1	Horizontal Directional Drilling (HDD)	m	<b>2</b>
2	Carriage Way Open trench (CW)	m	<b>0</b>
3	Grass Verge Open Trenching (GV)	m	<b>0</b>
4	Micro trenching (MT)	m	<b>0</b>
	Total		<b>0</b>

	Other Information	Unit	Qty
1	Proposed Manhole	EA	<b>2</b>
2	Proposed Pole	EA	<b>133</b>
3	Joint Closure	EA	<b>2</b>
4	Estimated time required for completion	days	<b>30</b>



PROJEK PENYEDIAAN DAN PENYELENGGARAAN POINT OF PRESENCE (POP) FASA 2: HAB INFRASTRUKTUR GENTIAN OPTIK BERHAMPIRAN DENGAN SEKOLAH, KAWASAN PERINDUSTRIAN, PREMIS KERAJAAN DAN KOMUNITI SEKITARNYA OLEH KEMENTERIAN KOMUNIKASI MALAYSIA - ZON UTARA (KKMM.400-11/17/132(1))



### Local Authority Summary

#### 1. Daerah Kampar

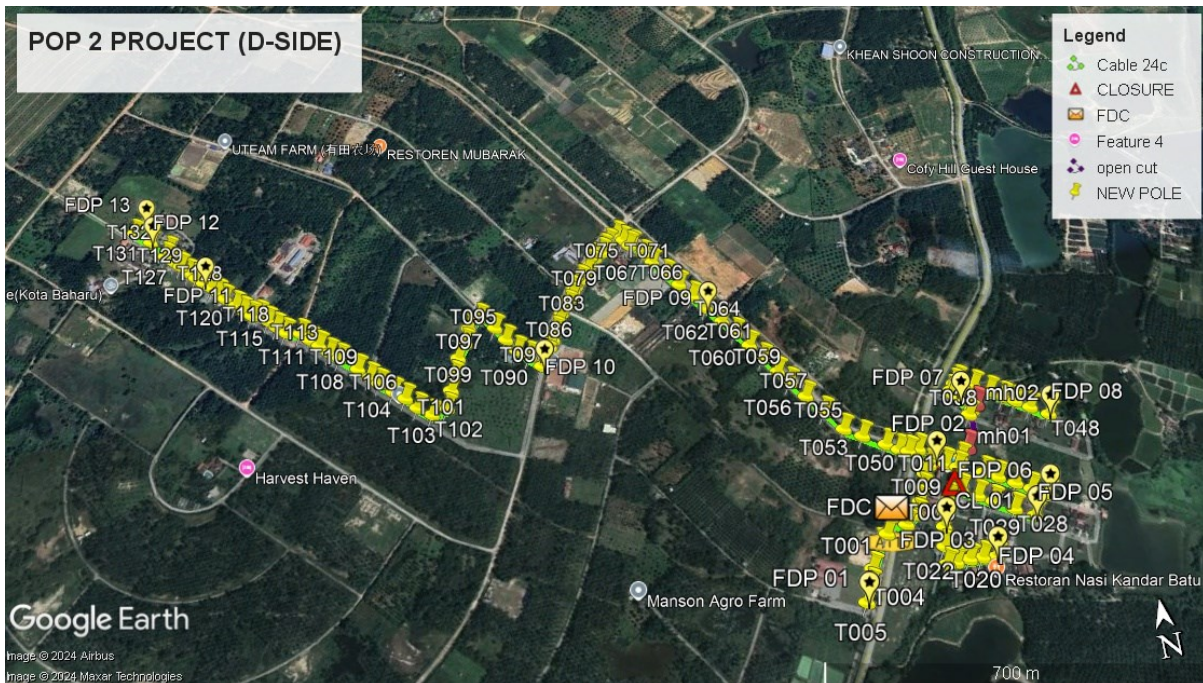
Bil	Items	Owner	Quantity	Distance(m)
1	HDD	JKR	-	-
		Majlis	-	-
		Estate / Private Land	-	-
2	New Pole	JKR	2pcs	170m
		Majlis	48pcs	1465m
		Estate / Private Land	83pcs	2240m
3	Existing TNB Pole	JKR	-	-
		Majlis	-	-
		Estate / Private Land	-	-
Total				3875m

Site Plan – KMZ (Overview site area)

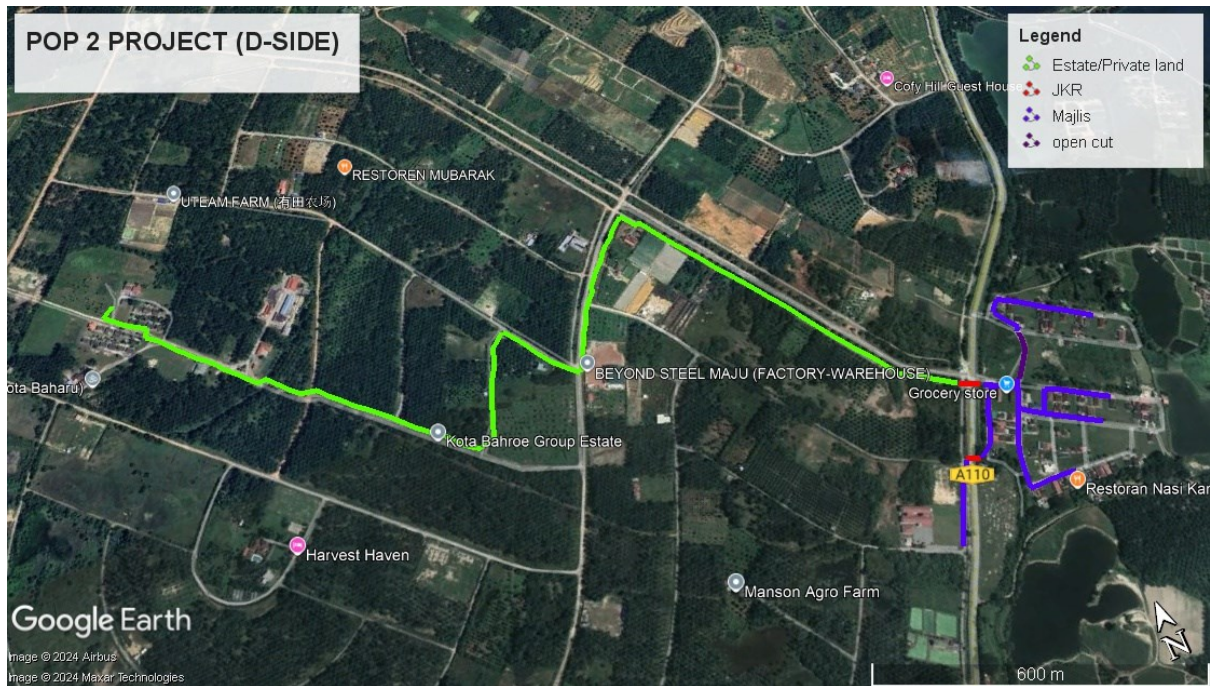
Proposed FDP and Closure



Proposed New Pole



**Site Plan – KMZ Routing (All Local Authority)**



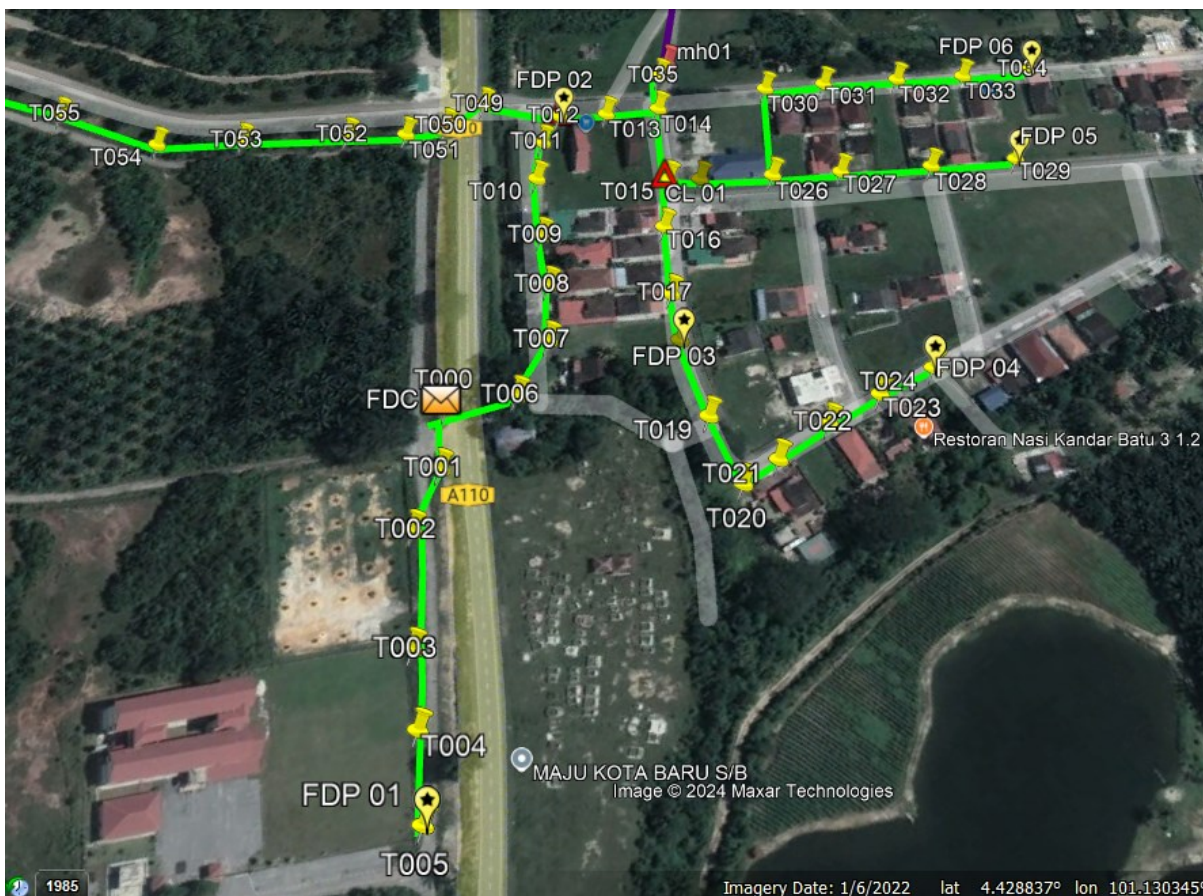
**Red - JKR Kampar**

**Blue - Majlis Perbandaran Kampar**

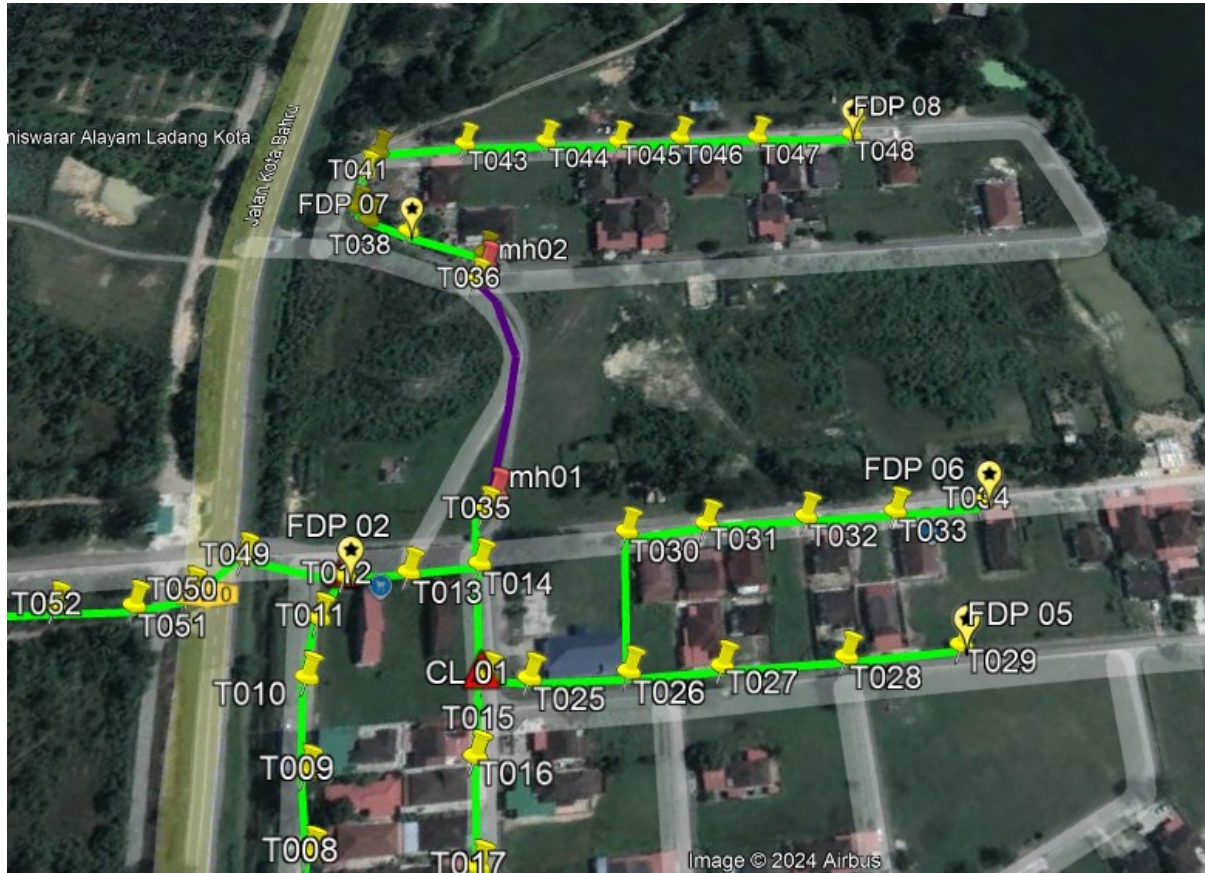
**Green - Ladang / Private estate**

Site Plan – KMZ Routing (All site area)

Route 1

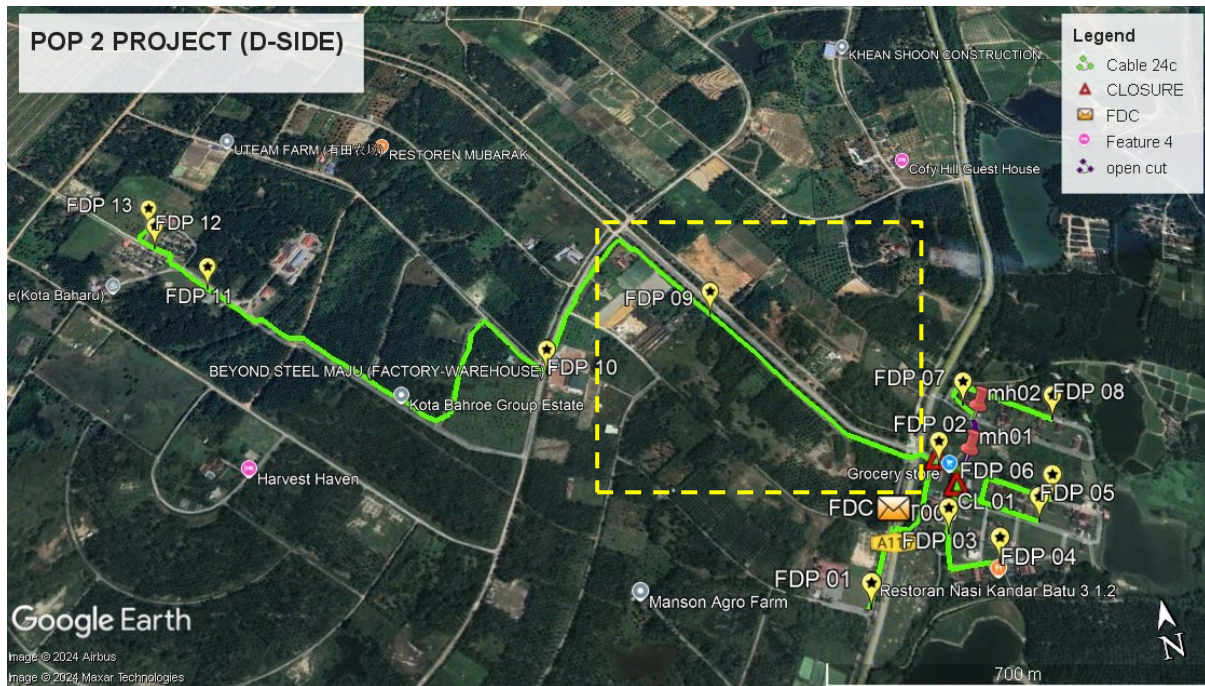


Route 1.1



Route 1.2

**Route 2**

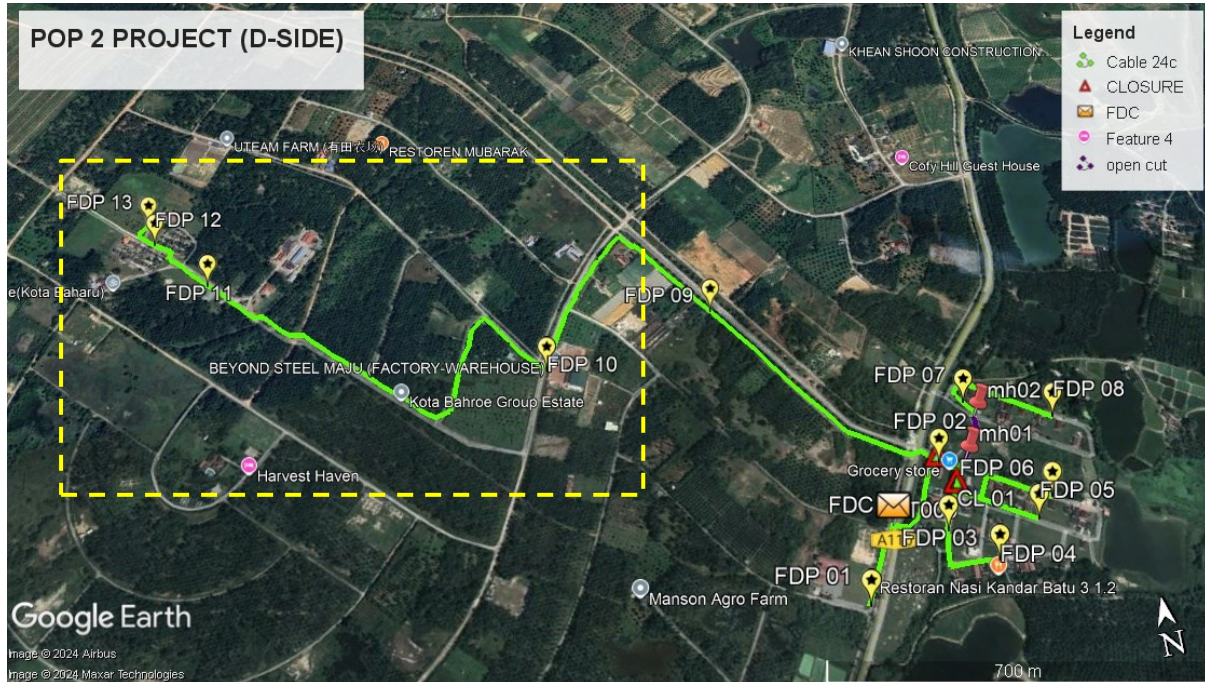


**Route 2.1**

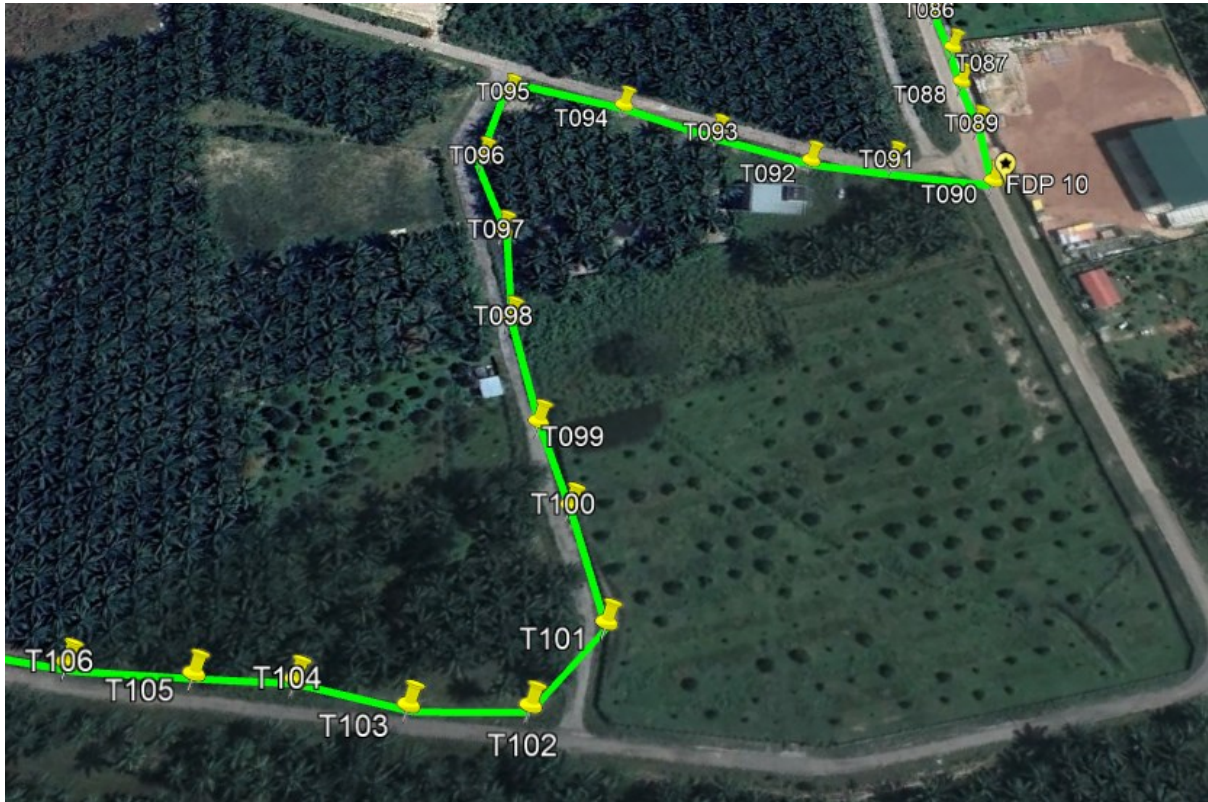


**Route 2.2**

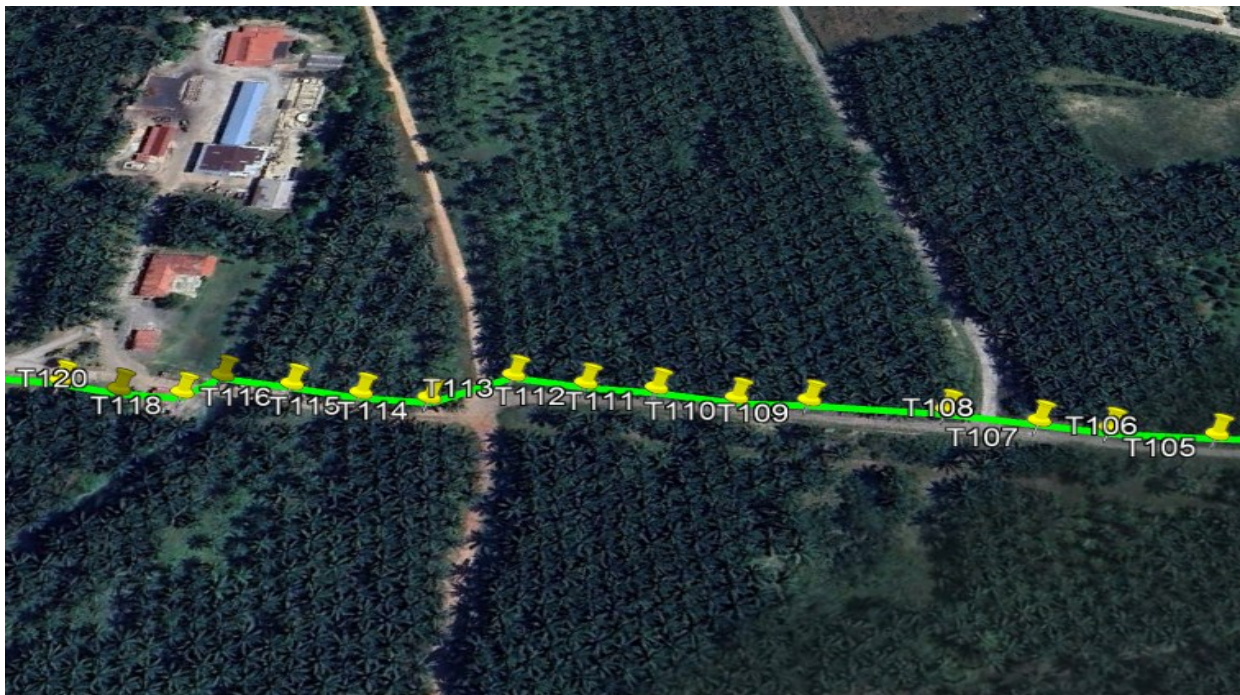
**Route 3**



**Route 3.1**



Route 3.2



Route 3.3



**Route 3.4**

Site Plan – KMZ Routing (Proposed New Manhole)

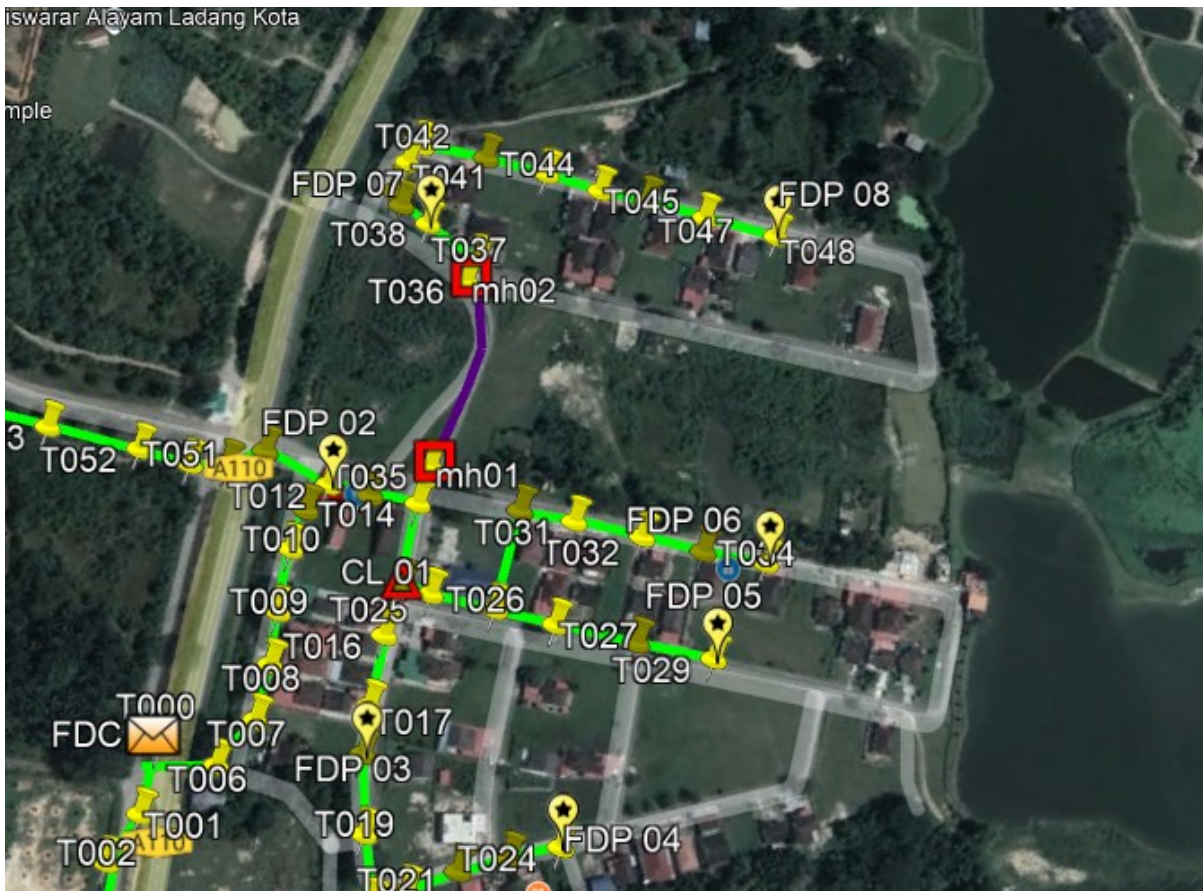
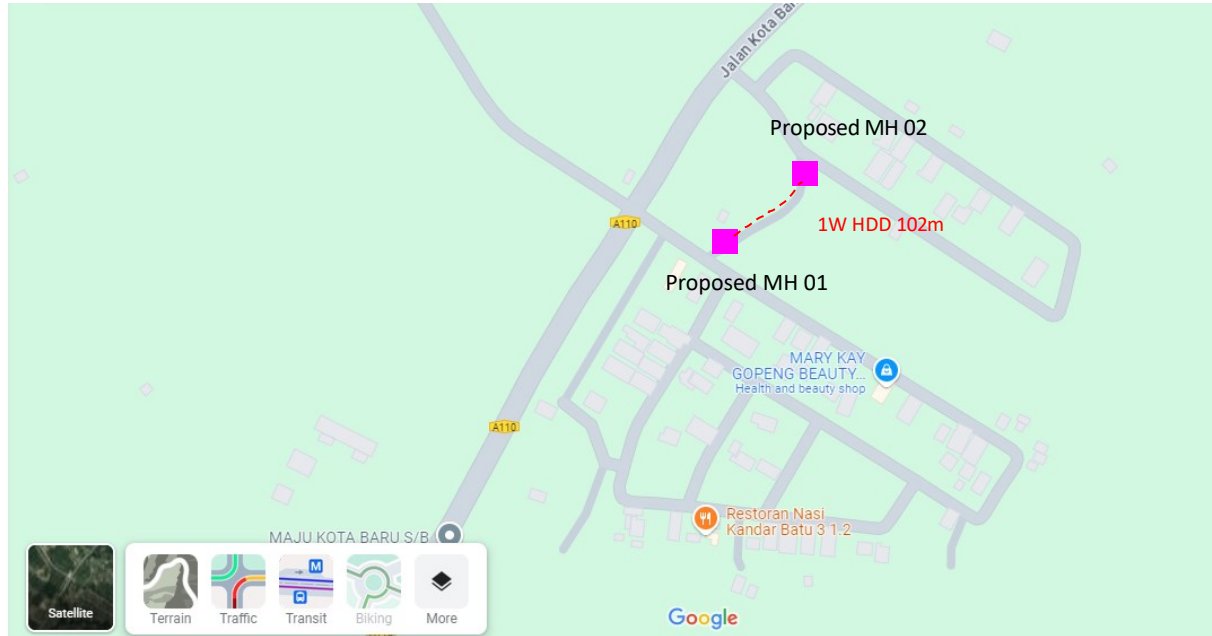


Figure 1: Manhole 1 (4.427136, 101.132145) & Manhole 2 (4.427905, 101.132598)

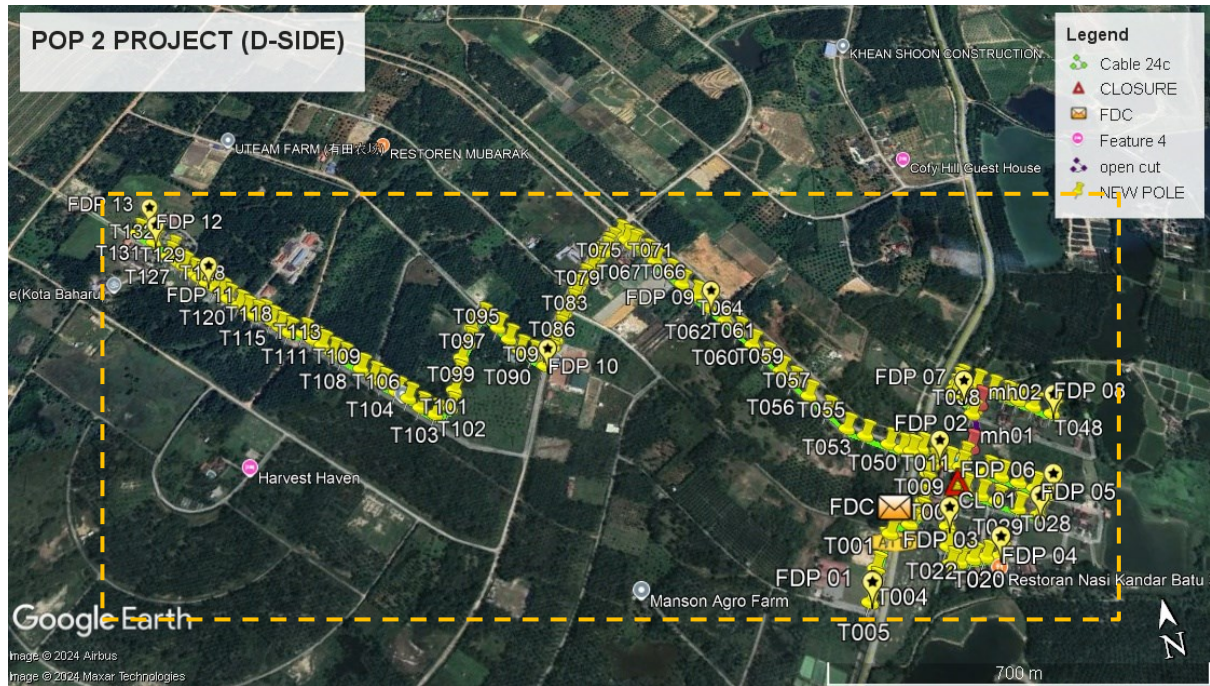
**Site Plan – Google Map (routing plan, Manhole)**



**Proposed New Manhole Lat & Long Table**

PROPOSED MANHOLE COORDINATE		
POLE NUMBER	LATITUDE	LONGITUDE
MH01	4.427136	101.132145
MH02	4.427905	101.132598

**Site Plan – KMZ Routing (Proposed new Pole)**





PROJEK PENYEDIAAN DAN PENYELENGGARAAN POINT OF PRESENCE (POP) FASA 2: HAB INFRASTRUKTUR GENTIAN OPTIK BERHAMPIRAN DENGAN SEKOLAH, KAWASAN PERINDUSTRIAN, PREMIS KERAJAAN DAN KOMUNITI SEKITARNYA OLEH KEMENTERIAN KOMUNIKASI MALAYSIA - ZON UTARA (KKMM.400-11/17/132(1))



**Overall Pole (Proposed New)**

No.	Pole & Manhole ID	Distance	Latitude	Longitude	Local Authority
1	T001	0.00	4.426081119	101.1303907	Majlis Perbandaran Kampar
2	T002	28.51	4.425929807	101.1301841	Majlis Perbandaran Kampar
3	T003	49.57	4.425547951	101.129955	Majlis Perbandaran Kampar
4	T004	31.68	4.425294797	101.1298251	Majlis Perbandaran Kampar
5	T005	35.01	4.425017701	101.1296764	Majlis Perbandaran Kampar
6	T006	177.69	4.426170054	101.130781	Majlis Perbandaran Kampar
7	T007	29.41	4.426301386	101.1310102	Majlis Perbandaran Kampar
8	T008	28.55	4.426515259	101.1311518	Majlis Perbandaran Kampar
9	T009	27.09	4.426732364	101.1312617	Majlis Perbandaran Kampar
10	T010	32.50	4.426985118	101.1314079	Majlis Perbandaran Kampar
11	T011	21.36	4.427131572	101.1315318	Majlis Perbandaran Kampar
12	T012	17.17	4.427206234	101.1316668	Majlis Perbandaran Kampar
13	T013	22.12	4.427094896	101.1318315	Majlis Perbandaran Kampar
14	T014	24.66	4.426984888	101.1320237	Majlis Perbandaran Kampar
15	T015	42.32	4.426653171	101.1318381	Majlis Perbandaran Kampar
16	T016	27.23	4.426466705	101.1316798	Majlis Perbandaran Kampar
17	T017	36.20	4.42618841	101.1315115	Majlis Perbandaran Kampar
18	T018	24.25	4.425993939	101.1314134	Majlis Perbandaran Kampar
19	T019	39.32	4.425659028	101.1313013	Majlis Perbandaran Kampar
20	T020	34.48	4.425357193	101.1312319	Majlis Perbandaran Kampar
21	T021	18.29	4.425358281	101.1313962	Majlis Perbandaran Kampar
22	T022	27.06	4.425363303	101.1316392	Majlis Perbandaran Kampar



PROJEK PENYEDIAAN DAN PENYELENGGARAAN POINT OF PRESENCE (POP) FASA 2: HAB INFRASTRUKTUR GENTIAN OPTIK BERHAMPIRAN DENGAN SEKOLAH, KAWASAN PERINDUSTRIAN, PREMIS KERAJAAN DAN KOMUNITI SEKITARNYA OLEH KEMENTERIAN KOMUNIKASI MALAYSIA - ZON UTARA (KKMM.400-11/17/132(1))



23	T023	25.71	4.425342571	101.1318693	Majlis Perbandaran Kampar
24	T024	26.50	4.425307576	101.1321047	Majlis Perbandaran Kampar
25	T025	142.12	4.426573478	101.1319395	Majlis Perbandaran Kampar
26	T026	33.43	4.42640763	101.1321899	Majlis Perbandaran Kampar
27	T027	31.48	4.426249938	101.1324246	Majlis Perbandaran Kampar
28	T028	41.99	4.426044483	101.132741	Majlis Perbandaran Kampar
29	T029	39.45	4.425860076	101.1330436	Majlis Perbandaran Kampar
30	T030	123.21	4.426795767	101.1324523	Majlis Perbandaran Kampar
31	T031	28.21	4.426663947	101.1326688	Majlis Perbandaran Kampar
32	T032	35.31	4.426492204	101.1329355	Majlis Perbandaran Kampar
33	T033	31.79	4.426333102	101.1331725	Majlis Perbandaran Kampar
34	T034	32.17	4.426188264	101.1334226	Majlis Perbandaran Kampar
35	T035	177.83	4.427132146	101.1321338	Majlis Perbandaran Kampar
36	T036	99.53	4.42790256	101.1325874	Majlis Perbandaran Kampar
37	T037	12.99	4.427981311	101.1326736	Majlis Perbandaran Kampar
38	T038	32.60	4.428225749	101.1325123	Majlis Perbandaran Kampar
39	T039	17.18	4.428353507	101.1324258	Majlis Perbandaran Kampar
40	T040	8.34	4.428428216	101.1324198	Majlis Perbandaran Kampar
41	T041	17.33	4.428544648	101.1325231	Majlis Perbandaran Kampar
42	T042	11.36	4.428596546	101.1326109	Majlis Perbandaran Kampar
43	T043	34.69	4.428436568	101.1328784	Majlis Perbandaran Kampar
44	T044	32.82	4.428266987	101.1331195	Majlis Perbandaran Kampar
45	T045	29.54	4.428102571	101.1333277	Majlis Perbandaran Kampar
46	T046	25.05	4.42798143	101.1335174	Majlis Perbandaran Kampar



PROJEK PENYEDIAAN DAN PENYELENGGARAAN POINT OF PRESENCE (POP) FASA 2: HAB INFRASTRUKTUR GENTIAN OPTIK BERHAMPIRAN DENGAN SEKOLAH, KAWASAN PERINDUSTRIAN, PREMIS KERAJAAN DAN KOMUNITI SEKITARNYA OLEH KEMENTERIAN KOMUNIKASI MALAYSIA - ZON UTARA (KKMM.400-11/17/132(1))



47	T047	31.46	4.427811043	101.1337429	Majlis Perbandaran Kampar
48	T048	38.47	4.427612266	101.1340255	Majlis Perbandaran Kampar
49	T049	287.73	4.427455269	101.1314456	JKR Kampar
50	T050	20.74	4.427450796	101.1312593	JKR Kampar
51	T051	19.11	4.427515467	101.1311003	Ladang / Private estate
52	T052	27.23	4.427661304	101.1309039	Ladang / Private estate
53	T053	48.84	4.427904046	101.1305384	Ladang / Private estate
54	T054	39.32	4.428102065	101.1302459	Ladang / Private estate
55	T055	52.62	4.42850154	101.1299933	Ladang / Private estate
56	T056	48.83	4.428869862	101.129755	Ladang / Private estate
57	T057	44.05	4.429200343	101.1295373	Ladang / Private estate
58	T058	33.64	4.429459325	101.1293816	Ladang / Private estate
59	T059	42.56	4.429785865	101.1291827	Ladang / Private estate
60	T060	39.41	4.430096269	101.1290124	Ladang / Private estate
61	T061	42.06	4.430415549	101.1288104	Ladang / Private estate
62	T062	36.89	4.430694698	101.1286318	Ladang / Private estate
63	T063	46.18	4.431037333	101.1283979	Ladang / Private estate
64	T064	40.55	4.43134716	101.1282063	Ladang / Private estate
65	T065	39.91	4.431651562	101.1280169	Ladang / Private estate
66	T066	38.70	4.431935154	101.1278158	Ladang / Private estate
67	T067	41.31	4.432248898	101.1276175	Ladang / Private estate
68	T068	27.80	4.43246106	101.1274858	Ladang / Private estate
69	T069	35.75	4.432735457	101.1273189	Ladang / Private estate
70	T070	7.45	4.432714847	101.1272553	Ladang / Private estate
71	T071	18.98	4.432859074	101.1271643	Ladang / Private estate



PROJEK PENYEDIAAN DAN PENYELENGGARAAN POINT OF PRESENCE (POP) FASA 2: HAB INFRASTRUKTUR GENTIAN OPTIK BERHAMPIRAN DENGAN SEKOLAH, KAWASAN PERINDUSTRIAN, PREMIS KERAJAAN DAN KOMUNITI SEKITARNYA OLEH KEMENTERIAN KOMUNIKASI MALAYSIA - ZON UTARA (KKMM.400-11/17/132(1))



72	T072	20.61	4.433002878	101.1270476	Ladang / Private estate
73	T073	26.68	4.432862527	101.1268534	Ladang / Private estate
74	T074	17.19	4.432762733	101.1267356	Ladang / Private estate
75	T075	11.43	4.432676128	101.1266804	Ladang / Private estate
76	T076	19.18	4.432584987	101.1265342	Ladang / Private estate
77	T077	20.09	4.43244896	101.1264156	Ladang / Private estate
78	T078	17.54	4.432320239	101.1263248	Ladang / Private estate
79	T079	27.80	4.432154367	101.1261382	Ladang / Private estate
80	T080	16.32	4.432043783	101.1260419	Ladang / Private estate
81	T081	13.28	4.431947532	101.1259715	Ladang / Private estate
82	T082	16.71	4.431810949	101.1259093	Ladang / Private estate
83	T083	21.48	4.431654662	101.1257962	Ladang / Private estate
84	T084	21.87	4.431517058	101.125656	Ladang / Private estate
85	T085	26.52	4.431299381	101.1255592	Ladang / Private estate
86	T086	20.18	4.431152009	101.1254537	Ladang / Private estate
87	T087	19.86	4.430987351	101.1253851	Ladang / Private estate
88	T088	17.82	4.430852526	101.1252988	Ladang / Private estate
89	T089	21.70	4.430680548	101.125207	Ladang / Private estate
90	T090	26.57	4.430477585	101.1250814	Ladang / Private estate
91	T091	35.76	4.43073299	101.1248866	Ladang / Private estate
92	T092	29.19	4.430893764	101.1246795	Ladang / Private estate
93	T093	35.66	4.431166773	101.124512	Ladang / Private estate
94	T094	36.53	4.431450437	101.124347	Ladang / Private estate
95	T095	42.69	4.43172434	101.1240786	Ladang / Private estate



PROJEK PENYEDIAAN DAN PENYELENGGARAAN POINT OF PRESENCE (POP) FASA 2: HAB INFRASTRUKTUR GENTIAN OPTIK BERHAMPIRAN DENGAN SEKOLAH, KAWASAN PERINDUSTRIAN, PREMIS KERAJAAN DAN KOMUNITI SEKITARNYA OLEH KEMENTERIAN KOMUNIKASI MALAYSIA - ZON UTARA (KKMM.400-11/17/132(1))



96	T096	31.82	4.431544395	101.1238566	Ladang / Private estate
97	T097	34.85	4.431255117	101.1237369	Ladang / Private estate
98	T098	36.95	4.430968568	101.1235694	Ladang / Private estate
99	T099	42.15	4.430616897	101.1234292	Ladang / Private estate
100	T100	32.26	4.430339812	101.1233442	Ladang / Private estate
101	T101	40.53	4.429998422	101.1232177	Ladang / Private estate
102	T102	32.95	4.429931116	101.1229295	Ladang / Private estate
103	T103	34.56	4.430121564	101.1226844	Ladang / Private estate
104	T104	33.89	4.430356107	101.1224903	Ladang / Private estate
105	T105	29.48	4.430530224	101.1222908	Ladang / Private estate
106	T106	37.11	4.43075602	101.1220456	Ladang / Private estate
107	T107	24.56	4.430914592	101.1218922	Ladang / Private estate
108	T108	32.62	4.431130735	101.1216944	Ladang / Private estate
109	T109	48.44	4.43142949	101.121378	Ladang / Private estate
110	T110	25.78	4.431578577	101.1212008	Ladang / Private estate
111	T111	28.92	4.431771209	101.1210265	Ladang / Private estate
112	T112	25.37	4.431927356	101.1208605	Ladang / Private estate
113	T113	26.31	4.4320998	101.1206988	Ladang / Private estate
114	T114	31.77	4.432175462	101.1204237	Ladang / Private estate
115	T115	24.54	4.432327713	101.1202643	Ladang / Private estate
116	T116	25.58	4.432498538	101.1201107	Ladang / Private estate
117	T117	25.91	4.43267098	101.1199543	Ladang / Private estate
118	T118	15.88	4.432677169	101.1198118	Ladang / Private estate
119	T119	22.84	4.432814126	101.119659	Ladang / Private estate

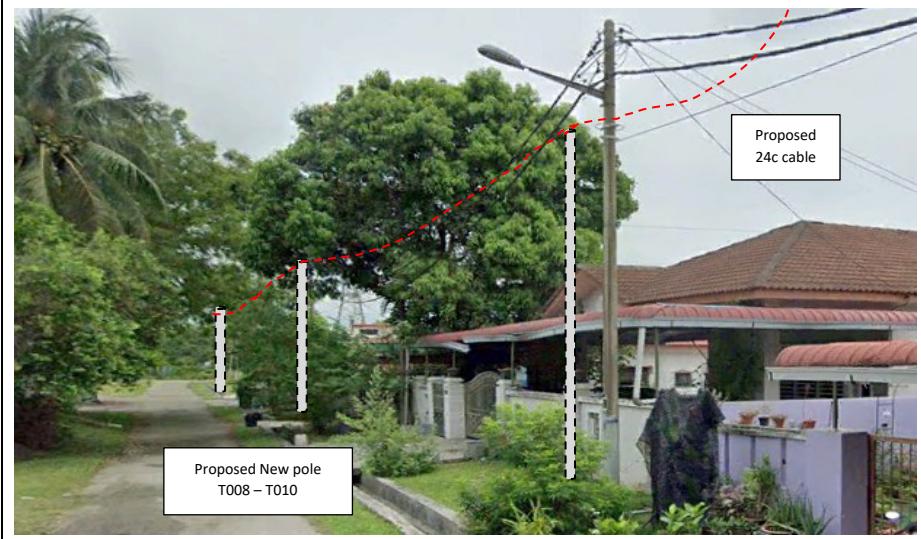
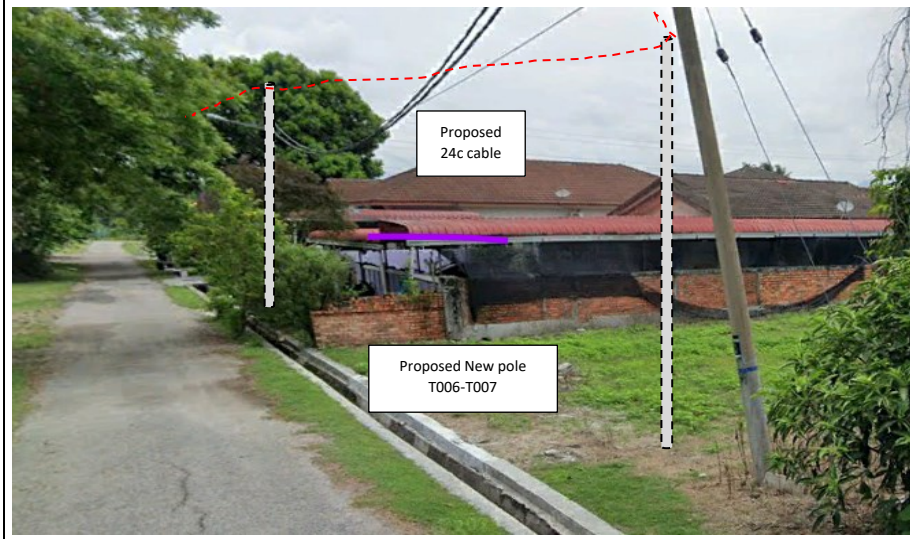
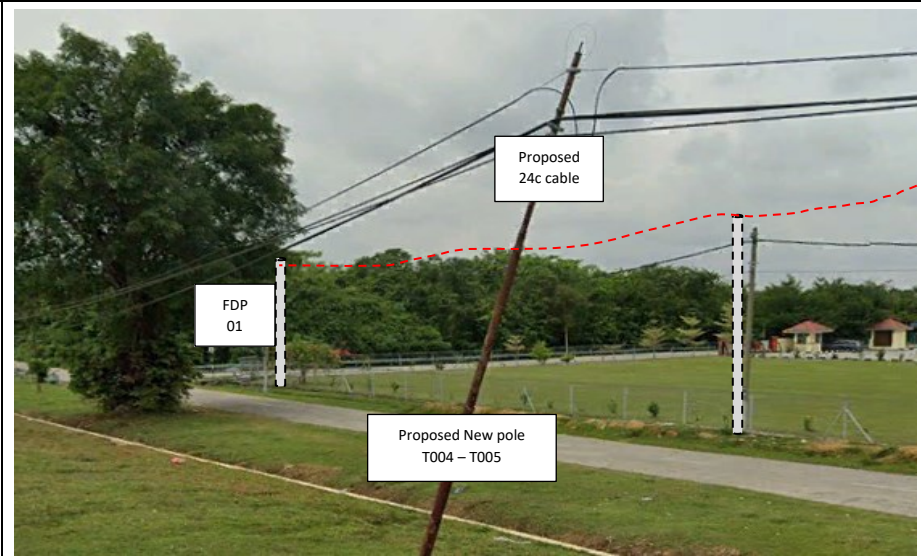
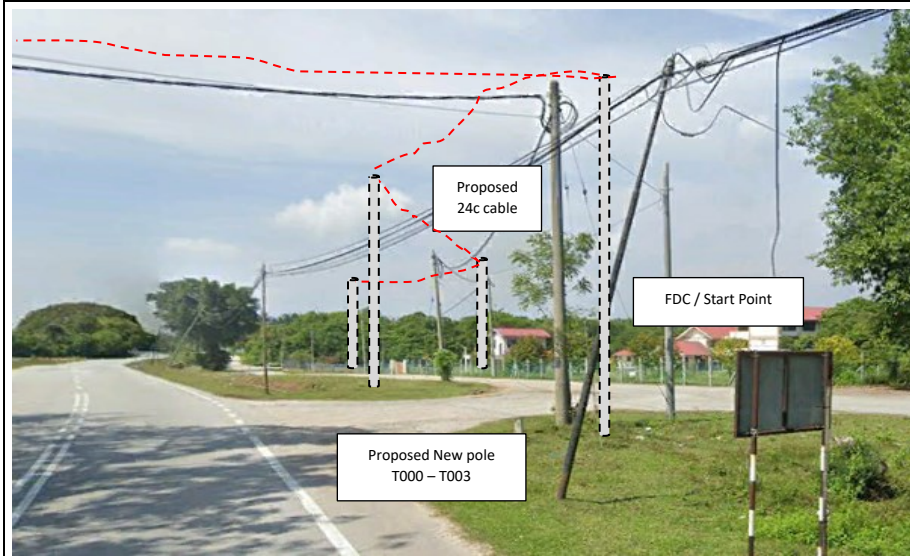


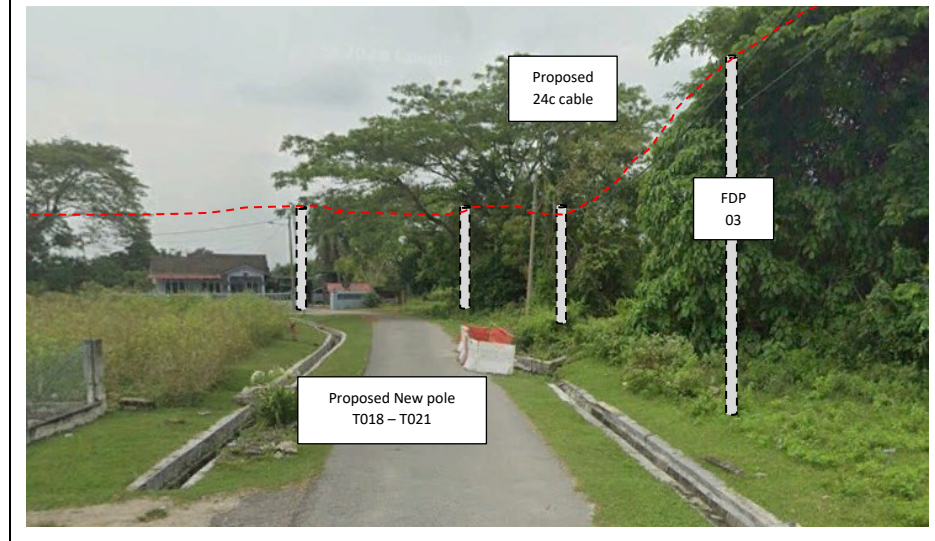
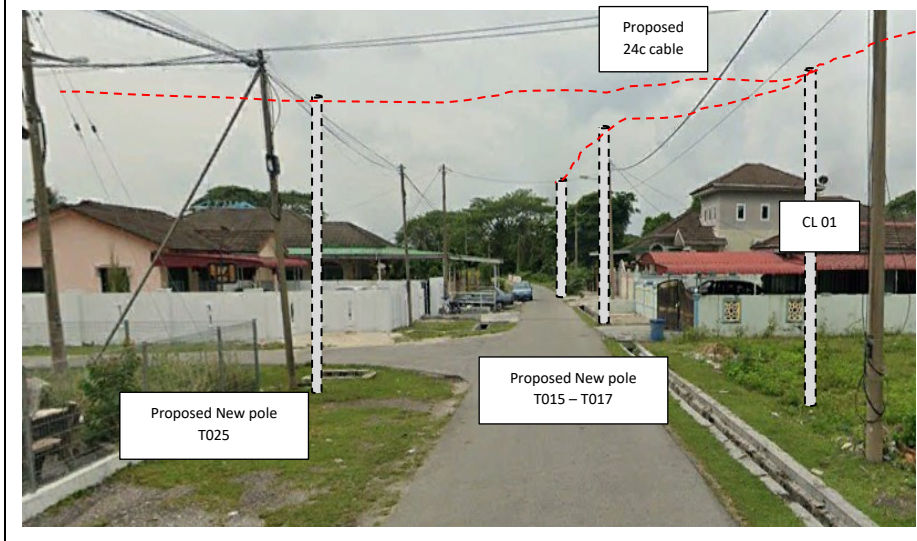
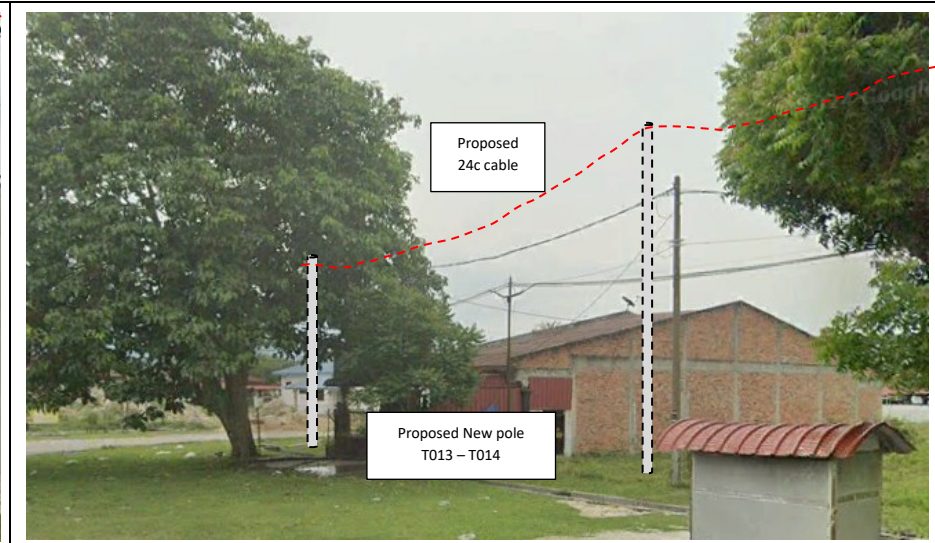
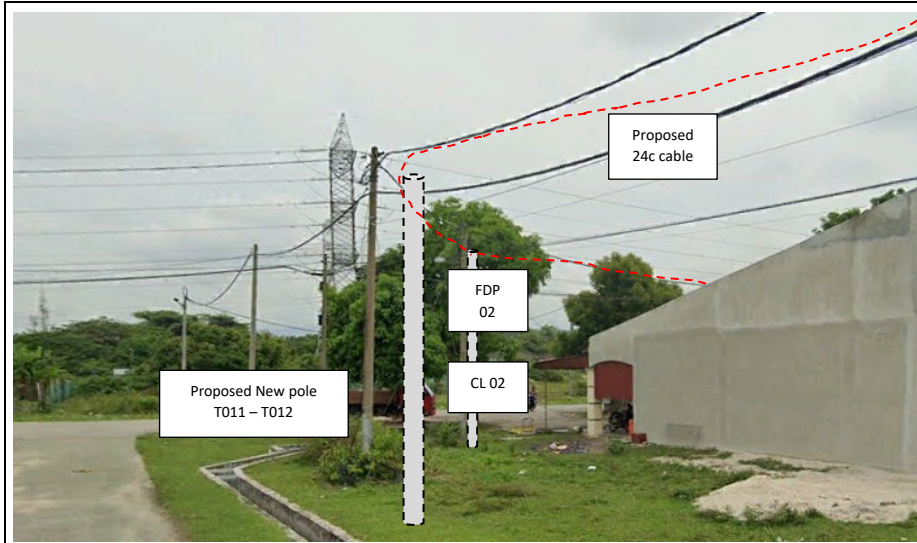
PROJEK PENYEDIAAN DAN PENYELENGGARAAN POINT OF PRESENCE (POP) FASA 2: HAB INFRASTRUKTUR GENTIAN OPTIK BERHAMPIRAN DENGAN SEKOLAH, KAWASAN PERINDUSTRIAN, PREMIS KERAJAAN DAN KOMUNITI SEKITARNYA OLEH KEMENTERIAN KOMUNIKASI MALAYSIA - ZON UTARA (KKMM.400-11/17/132(1))

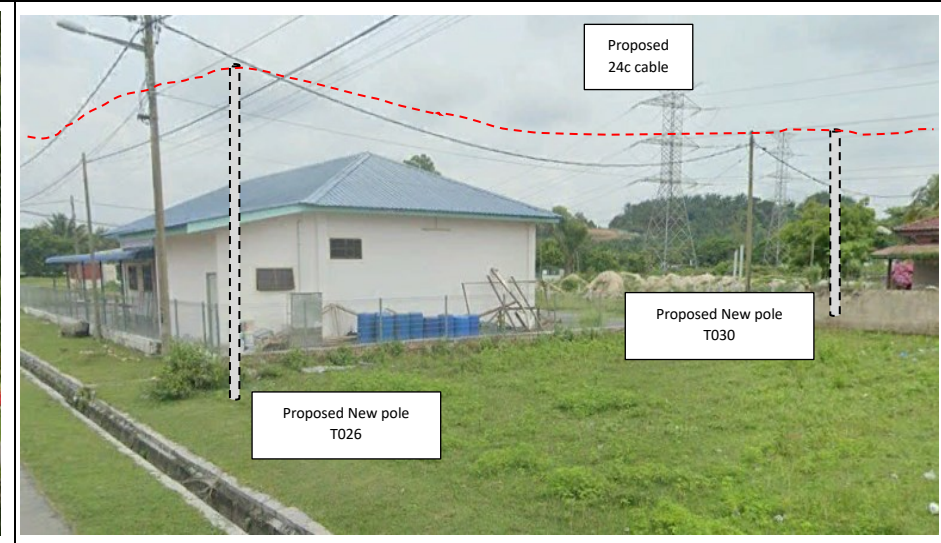
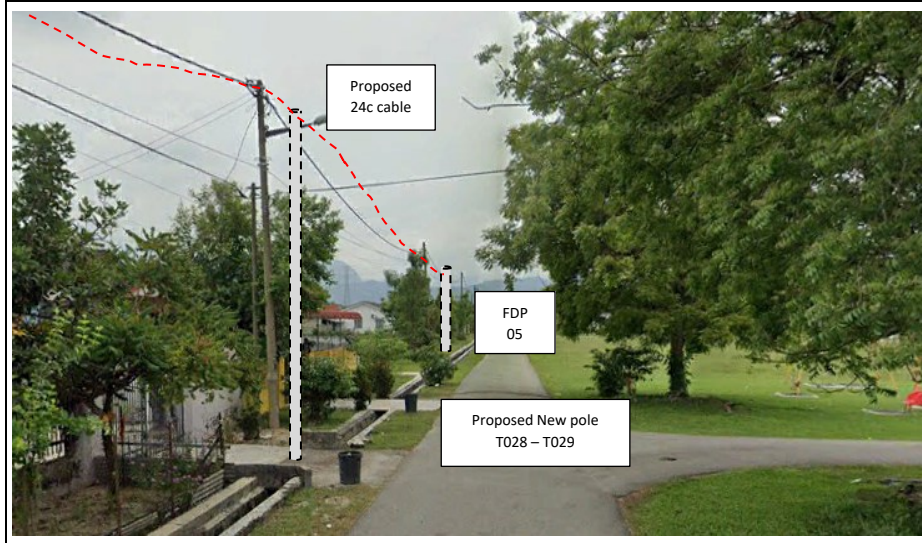
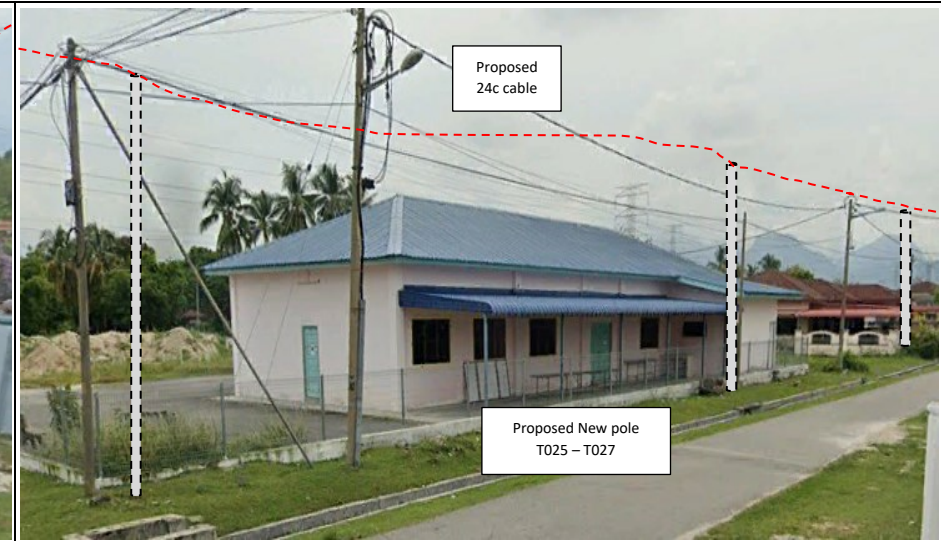
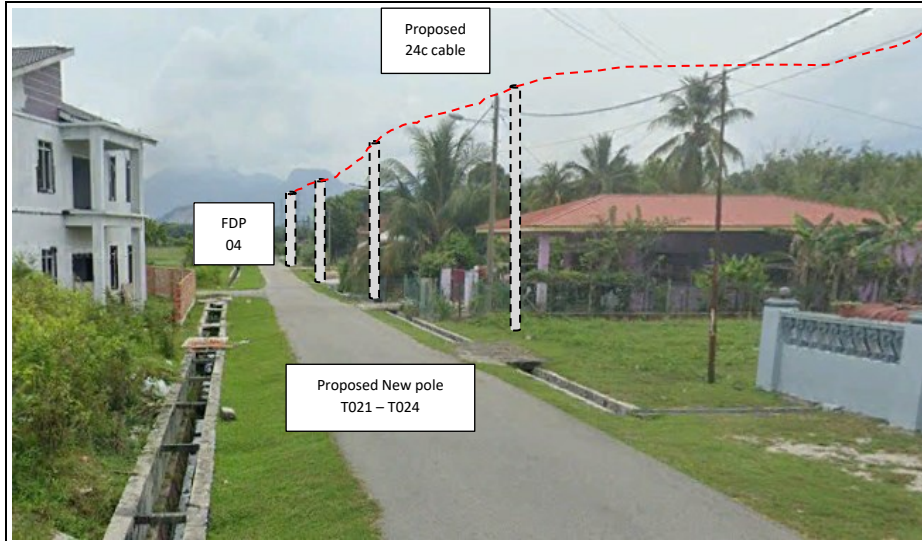


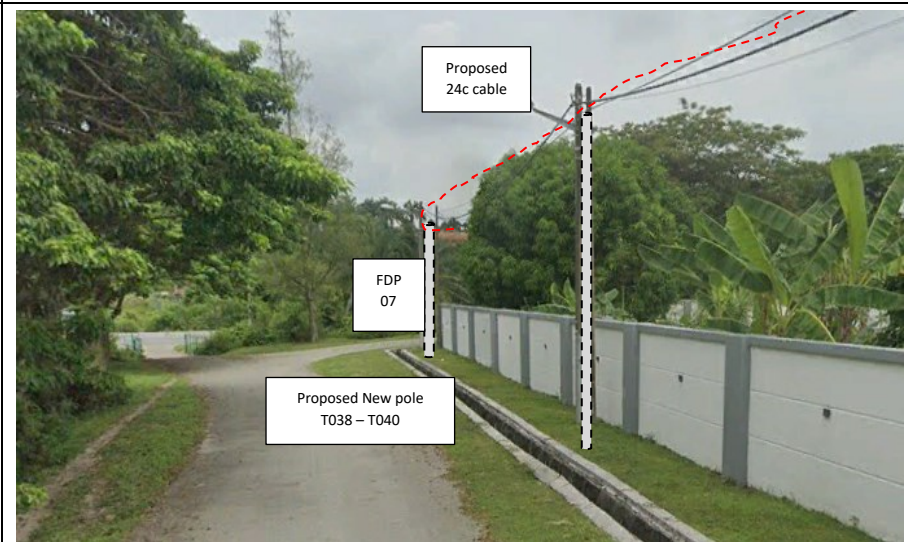
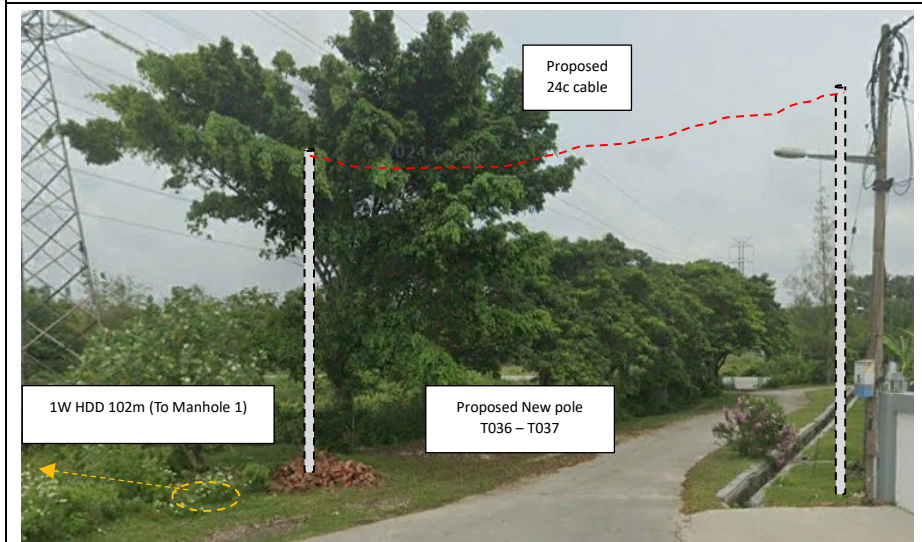
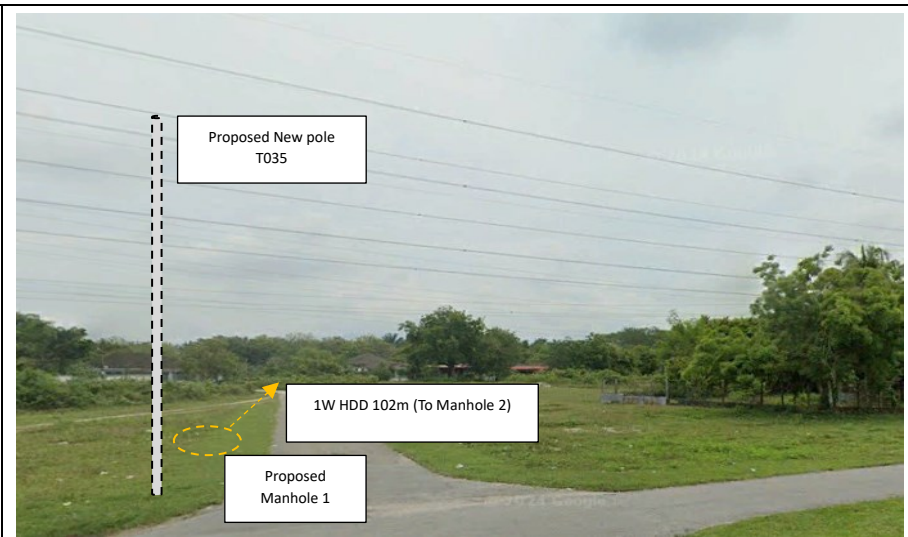
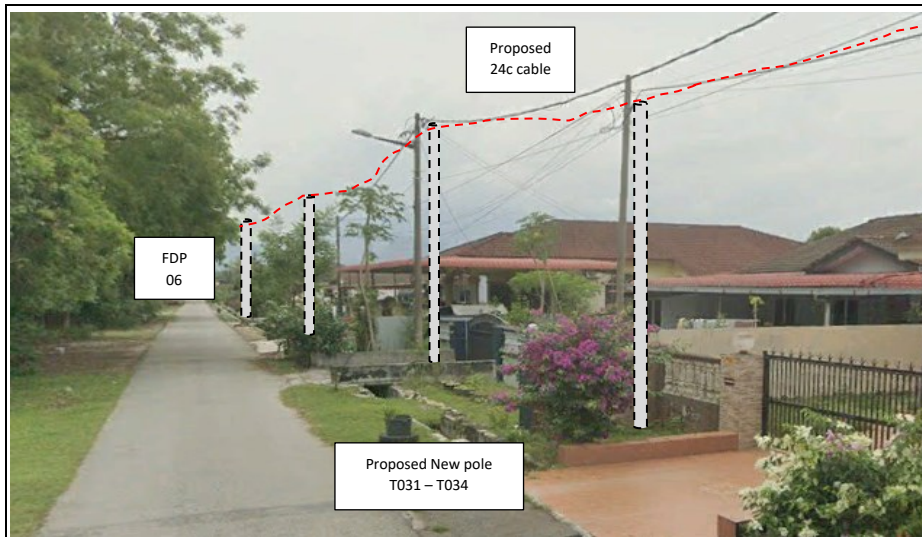
120	T120	22.15	4.432965197	101.1195295	Ladang / Private estate
121	T121	31.57	4.433159668	101.1193231	Ladang / Private estate
122	T122	21.87	4.433317756	101.1192065	Ladang / Private estate
123	T123	21.31	4.433458395	101.1190766	Ladang / Private estate
124	T124	21.13	4.433587182	101.1189372	Ladang / Private estate
125	T125	22.73	4.43373452	101.1187958	Ladang / Private estate
126	T126	21.62	4.433879167	101.1186663	Ladang / Private estate
127	T127	27.23	4.434065925	101.1185082	Ladang / Private estate
128	T128	17.34	4.434180328	101.1184025	Ladang / Private estate
129	T129	28.27	4.434357185	101.1182204	Ladang / Private estate
130	T130	16.33	4.434486031	101.1182905	Ladang / Private estate
131	T131	47.49	4.434742063	101.1179493	Ladang / Private estate
132	T132	47.41	4.435027039	101.1176328	Ladang / Private estate
133	T133	29.20	4.435192802	101.1178362	Ladang / Private estate
134	MH02	102.00	4.427136	101.132145	Majlis Perbandaran Kampar
135	MH02	102.00	4.427905	101.132598	Majlis Perbandaran Kampar

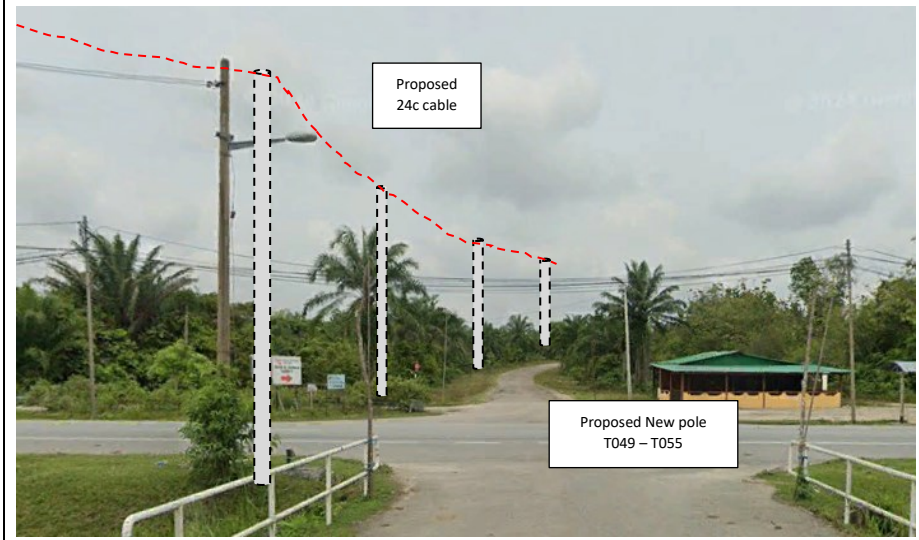
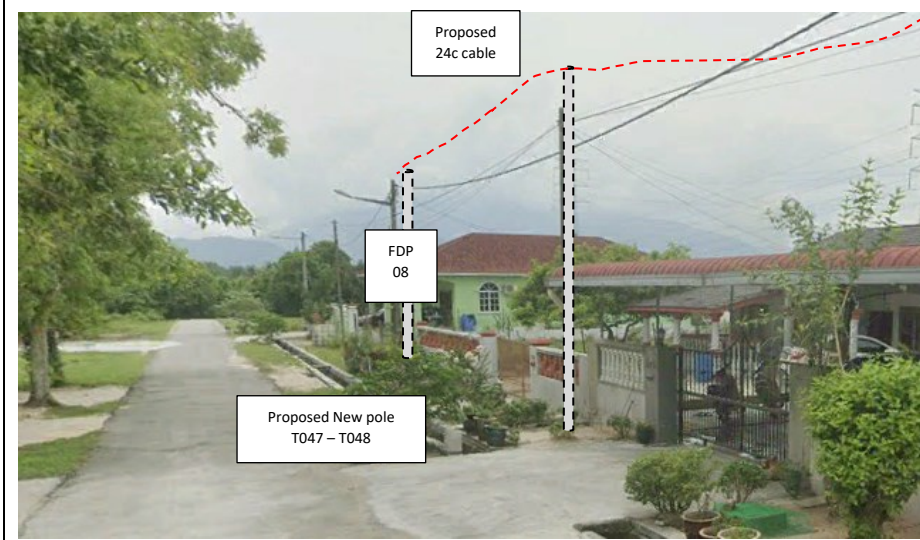
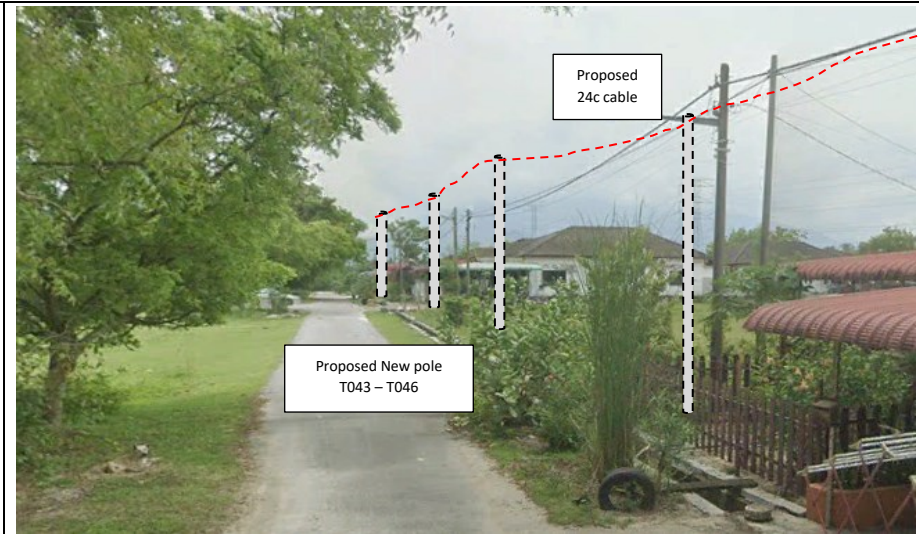
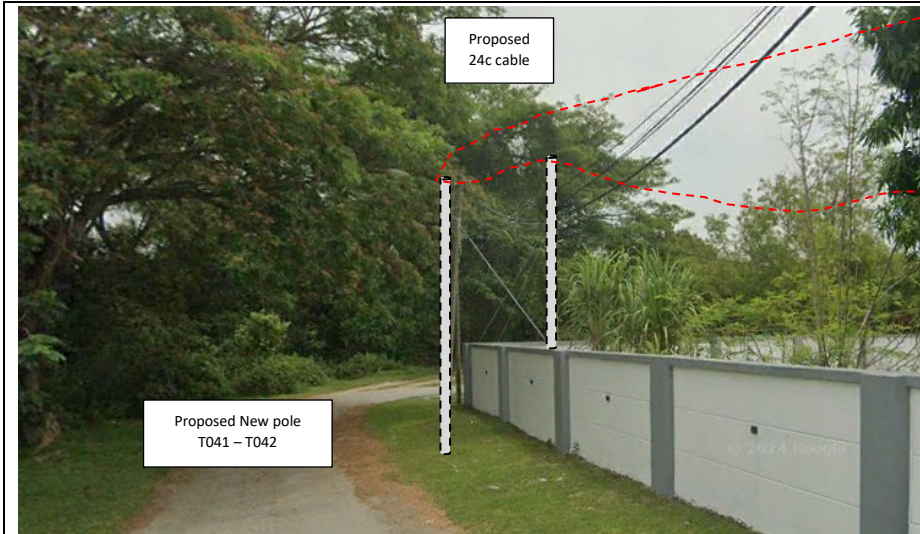
Site Photos – Proposed to install pole

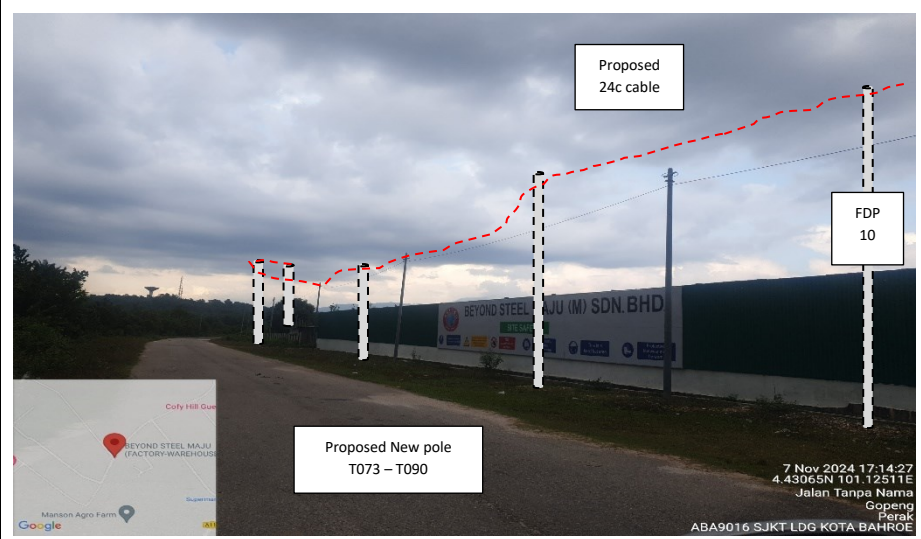
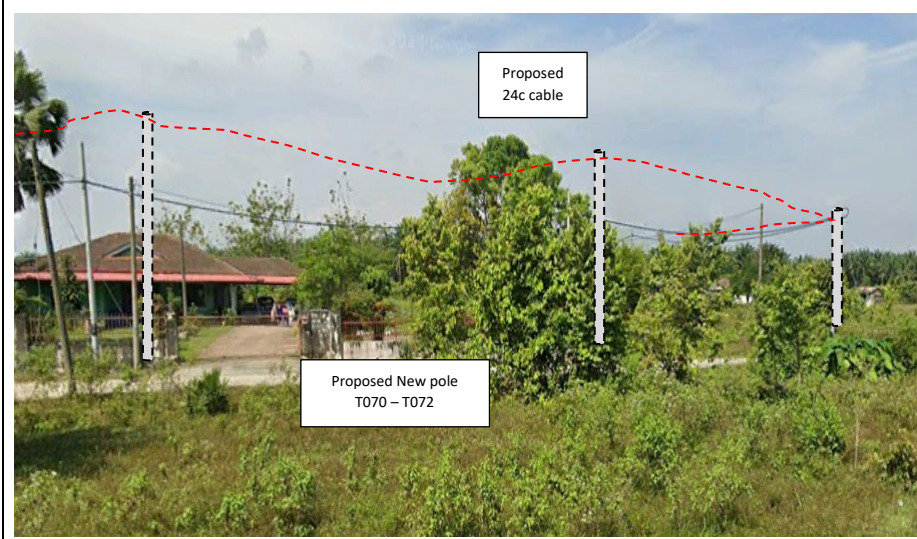
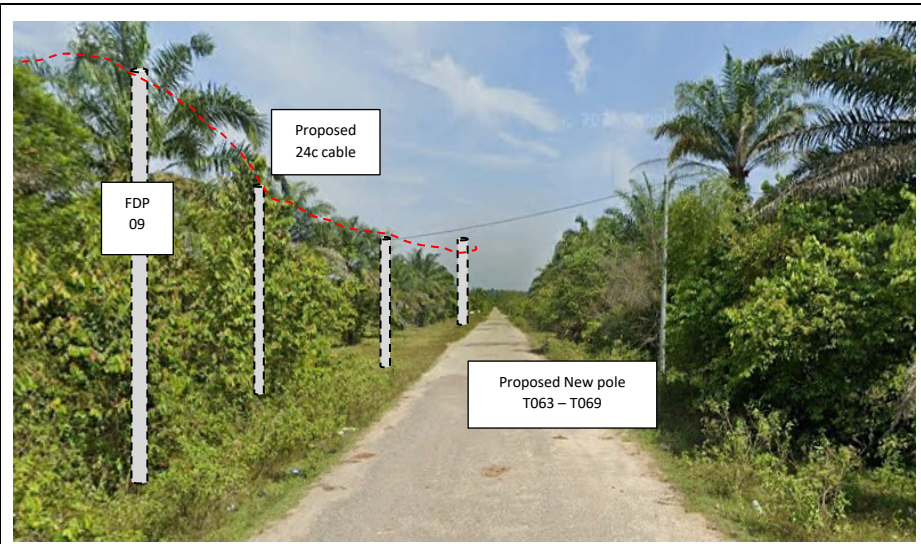
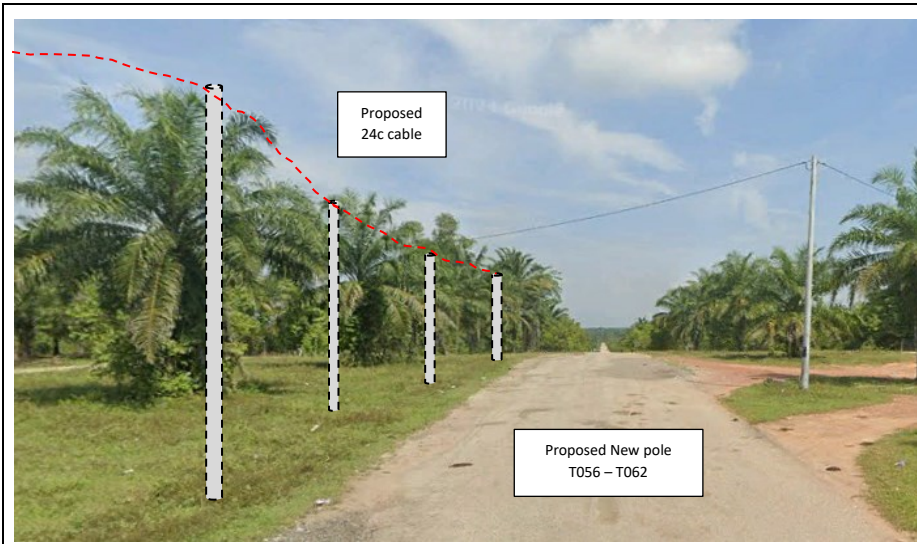


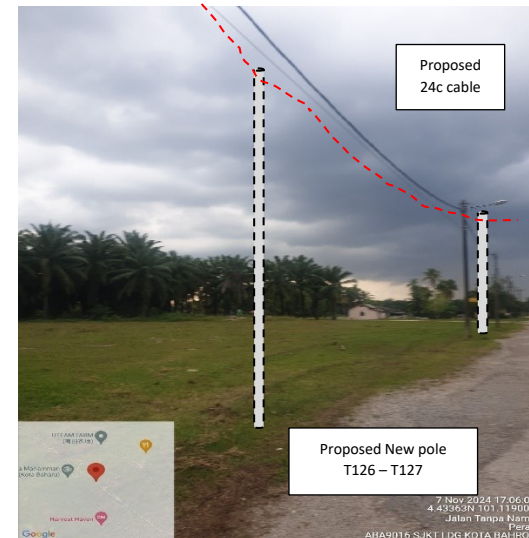
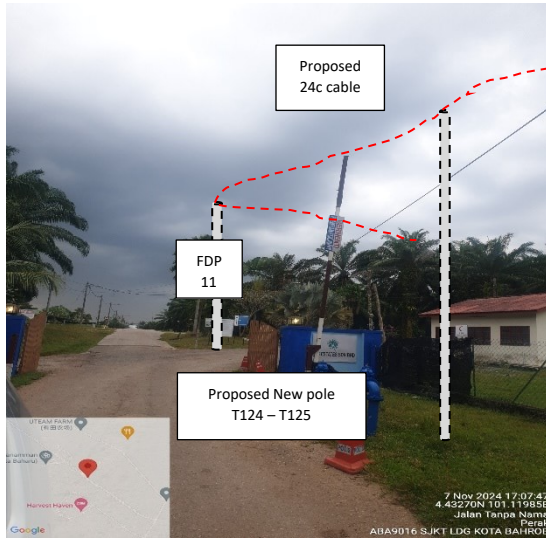
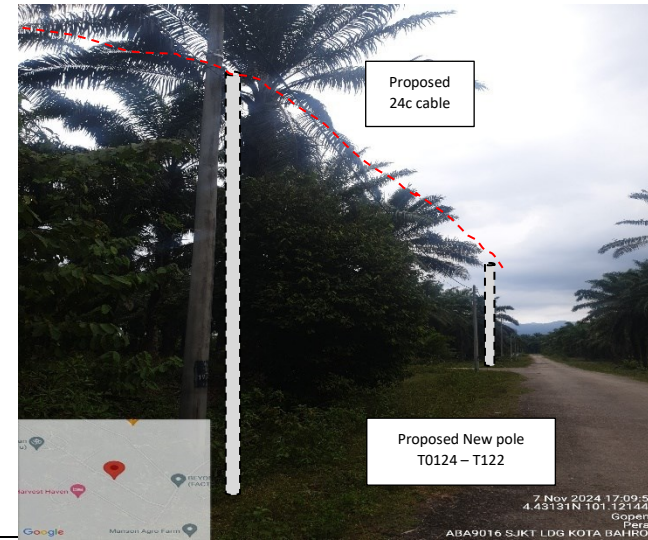
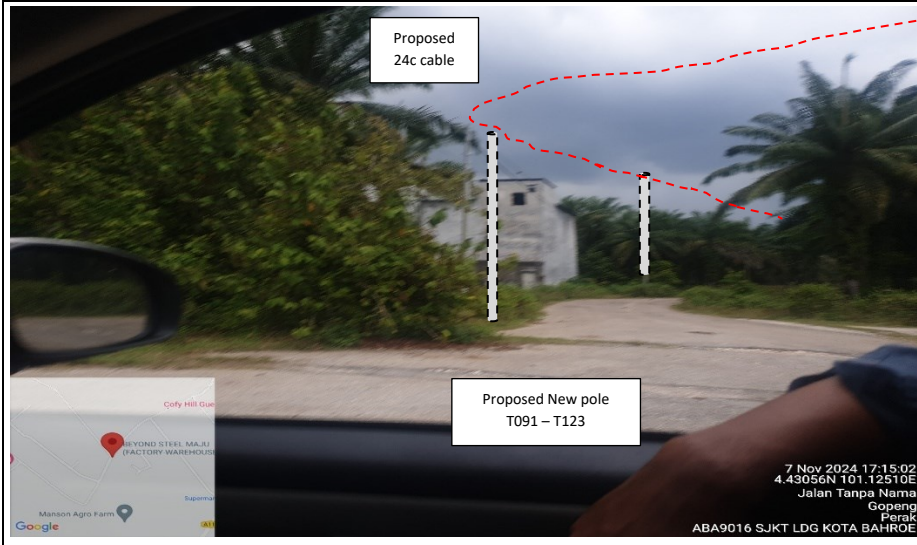


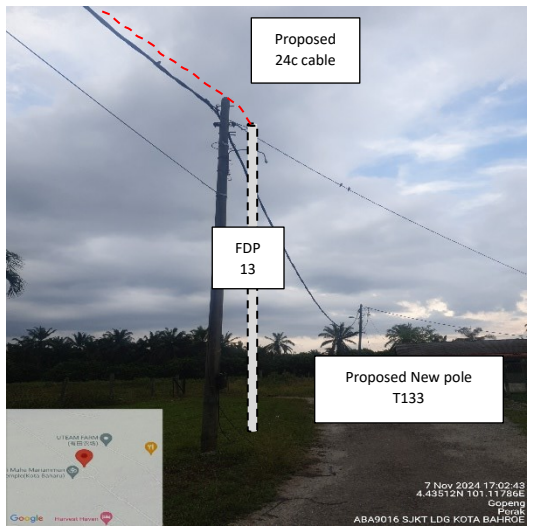
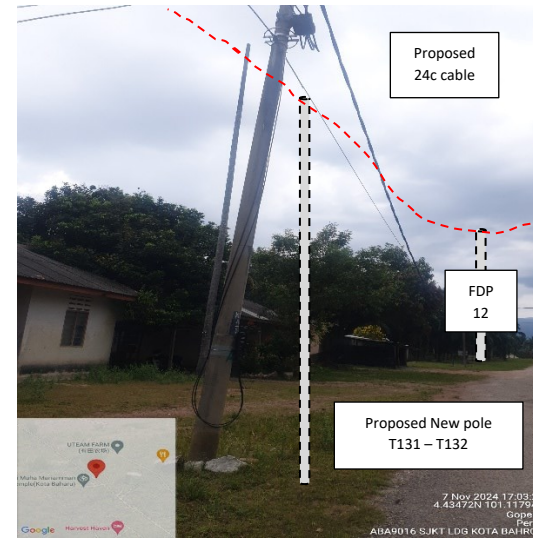
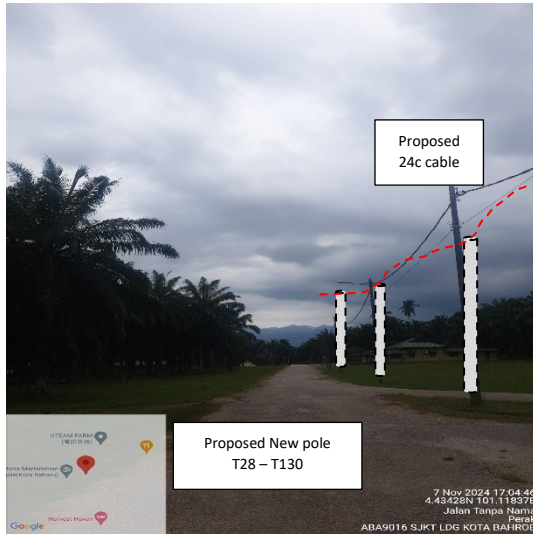












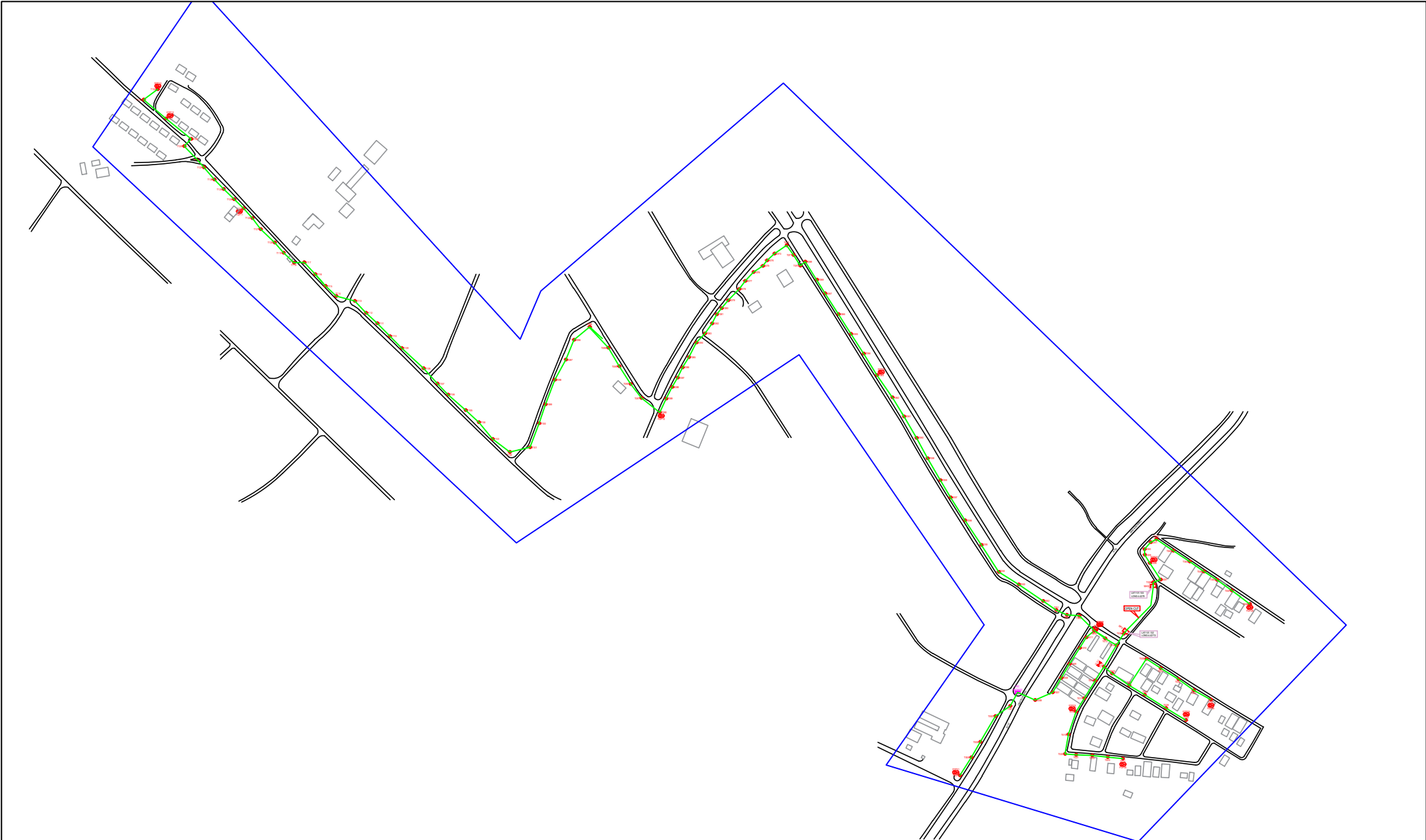


PROJEK PENYEDIAAN DAN PENYELENGGARAAN POINT OF PRESENCE (POP) FASA 2: HAB INFRASTRUKTUR GENTIAN OPTIK BERHAMPIRAN DENGAN SEKOLAH, KAWASAN PERINDUSTRIAN, PREMIS KERAJAAN DAN KOMUNITI SEKITARNYA OLEH KEMENTERIAN KOMUNIKASI MALAYSIA - ZON UTARA (KKMM.400-11/17/132(1))



### 3rd Parties Dependencies

No.	Local Council/ Authority	Remark
1	JKR Kampar	
2	Majlis Perbandaran Kampar	
3	Ladang/Private Estate	
4		
5		
6		



LEGEND	NOS.	NOS.	NOS.	NOS.	NOS.	NOS.	NOS.	NOS.	NOS.	NOS.				
12C FOC		Installed 1:4 / 1:8 / 1:32 splitter		Installed Pole (9m)		Suspension		New Manhole (PIT)		Micro-Trenching (Meter)		MHI	MH NO.	
24C FOC	3875	Installed Patch Cord		Installed Pole (7.5M)	133	Tension		New Manhole(JRC7)	2	Temporary Infra (Meter)		TKS-1	Existing TNB Pole NO.	
48C FOC		FDC	1	Installed Pole (6.7M)		Pole Ring		FDP Boundary		Loop / Coil (Meter)		P001	New Pole NO.	
96C FOC		Closure	2	Existing TNB Pole		FDP with (1:8) splitter	13	HDD (Meter)		#	Active Outdoor Cabinet		CL01	Closure NO.
144C FOC		Existing Closure		Installed Riser		Existing Manhole		Open Cut (Meter)		001	FDC NO.		DP1	FDP NO.

ACTUAL HOMEPASS :

KEY PLAN :  
POP2 PROJECT IN PERAK

OWNER/DEVELOPER :

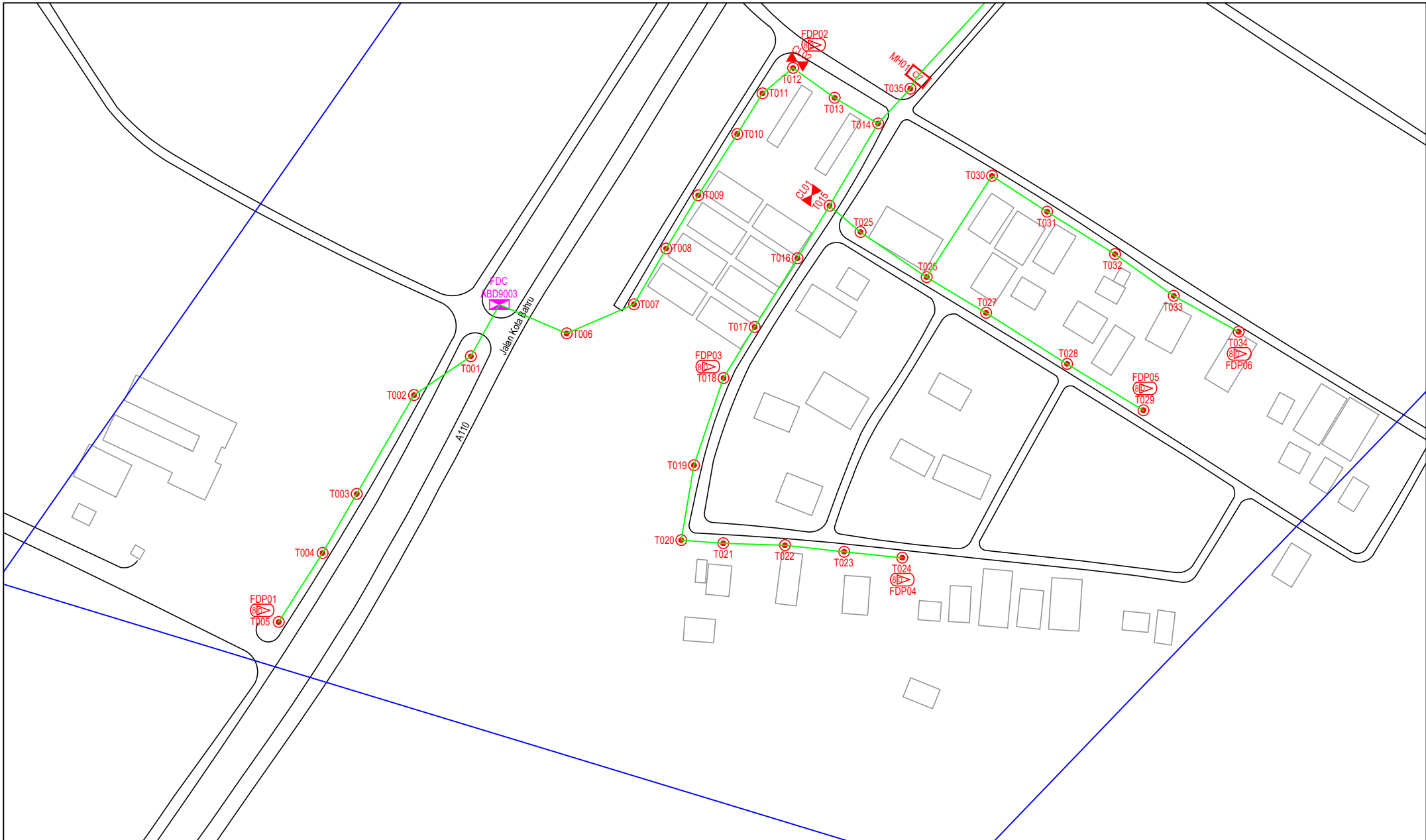
MAIN CONTRACTOR :

CONTRACTOR FOR SURVEY, TECHNICAL PROPOSAL AND WAYLEAVE, & PERMIT APPROVAL - POP2 PROJECT

DRAWING TITLE:  
AS-BUILT SITE PLAN DRAWING ABD9003  
SEKOLAH JENIS KEBANGSAAN (TAMIL) LADANG KOTA BAHROE

PROJECT PHASE:  
POP 2

Design By : ENGINEER	Date : NOV 2024
Drawn By : CAD ENGINEER	Scale : NOT TO SCALE
Checked By : ENGINEER	Job Number : 1
DRAWING NUMBER : ABD9003-ABD-01	Sheet : 1/6
THIS PRINT AND ITS COPYRIGHT ARE THE PROPERTY OF APEX COMMUNICATIONS SDN BHD	
Size : A3	



LEGEND	NOS.	NOS.	NOS.	NOS.	NOS.	NOS.	NOS.	NOS.	NOS.	NOS.
12C FOC		Installed 1:4 / 1:8 / 1:32 splitter		Installed Pole (9m)		Suspension		New Manhole (PIT)		Micro-Trenching (Meter)
24C FOC	3875	Installed Patch Cord		Installed Pole (7.5M)	133	Tension		New Manhole(JRC7)	2	Temporary Infra (Meter)
48C FOC		FDC	1	Installed Pole (6.7M)		Pole Ring		FDP Boundary		Loop / Coil (Meter)
96C FOC		Closure	2	Existing TNB Pole		FDP with (1:8) splitter	13	HDD (Meter)		Active Outdoor Cabinet
144C FOC		Existing Closure		Installed Riser		Existing Manhole		Open Cut (Meter)		FDC NO.
										MHI MH NO.
										TKS-1 Existing TNB Pole NO.
										P001 New Pole NO.
										CL01 Closure NO.
										DP1 FDP NO.

ACTUAL HOMEPASS :

KEY PLAN :

POP2 PROJECT IN PERAK

OWNER/DEVELOPER :

MAIN CONTRACTOR :

WCWL COMMUNICATIONS SDN BHD  
127, JALAN PAU 3/2, TAMAN PUNCAK JAYA,  
MUKAH, PUTRA PERANG,  
43300 SERI KEMBANGAN, SELANGOR  
TEL: +603 9083 9083  
E-MAIL: info@wcwlcommunications.com.my

PROJECT TITLE :

CONTRACTOR FOR SURVEY, TECHNICAL PROPOSAL AND WAYLEAVE, & PERMIT APPROVAL - POP2 PROJECT

DRAWING TITLE:

AS-BUILT SITE PLAN DRAWING ABD9003  
SEKOLAH JENIS KEBANGSAAN (TAMIL)  
LADANG KOTA BAHROE

PROJECT PHASE:  
POP 2

Design By : ENGINEER	Date : NOV 2024
Drawn By : CAD ENGINEER	Scale : NOT TO SCALE
Checked By : ENGINEER	Job Number : 1
DRAWING NUMBER : ABD9003-ABD-01A	Sheet : 2/6
THIS PRINT AND ITS COPYRIGHT ARE THE PROPERTY OF APEX COMMUNICATIONS SDN BHD	
Size : A3	

Design By : ENGINEER

Date : NOV 2024

Drawn By : CAD ENGINEER

Scale : NOT TO SCALE

Checked By : ENGINEER

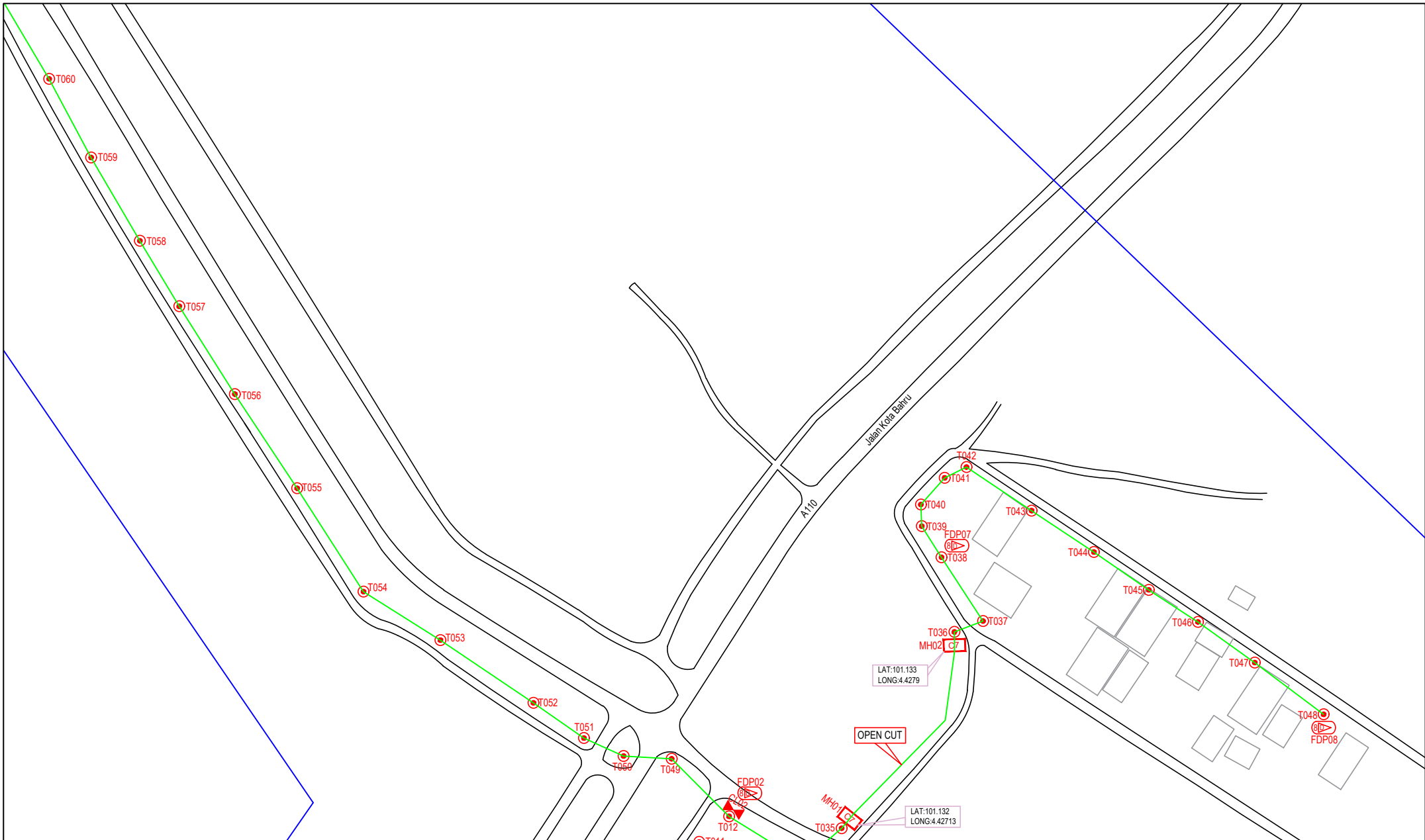
Job Number : 1

DRAWING NUMBER : ABD9003-ABD-01A

Sheet : 2/6

THIS PRINT AND ITS COPYRIGHT ARE THE PROPERTY OF APEX COMMUNICATIONS SDN BHD

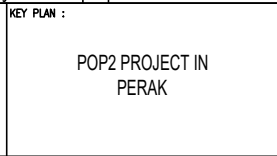
Size : A3



LEGEND	NOS.	NOS.	NOS.	NOS.	NOS.	NOS.	NOS.	NOS.	NOS.	NOS.
12C FOC		Installed Pole (9m)	1	Suspension		ES30 New Manhole (PIT)	1	Micro-Trenching (Meter)		MH1 MH NO.
24C FOC	3875	Installed Pole (7.5M)	133	Tension		ES7 New Manhole(JRC7)	2	Temporary Infra (Meter)		TKS-1 Existing TNB Pole NO.
48C FOC		Installed Pole (6.7M)		Pole Ring		FDP Boundary		Loop / Coil (Meter)		P001 New Pole NO.
96C FOC		Existing TNB Pole		FDP with (1:8) splitter	13	HDD (Meter)		Active Outdoor Cabinet		CL01 Closure NO.
144C FOC		Installed Riser		Existing Manhole		Open Cut (Meter)		FDC NO.		DP1 FDP NO.

ACTUAL HOMEPASS :

KEY PLAN :  
POP2 PROJECT IN PERAK



OWNER/DEVELOPER :  
MAIN CONTRACTOR :  
WCWL COMMUNICATIONS SDN BHD  
127, JALAN PAU 3/3, TAMAN PUNCAK JAYA,  
BANDAR PUTRA PERAI,  
43300 SERI KEMBANGAN, SELANGOR  
TEL : +603 9583 9933  
E-MAIL : info@wcwlcommunications.com.my

PROJECT TITLE :  
CONTRACTOR FOR SURVEY, TECHNICAL PROPOSAL AND WAYLEAVE, & PERMIT APPROVAL - POP2 PROJECT

DRAWING TITLE:  
AS-BUILT SITE PLAN DRAWING ABD9003  
SEKOLAH JENIS KEBANGSAAN (TAMIL) LADANG KOTA BAHROE  
PROJECT PHASE:  
POP 2

Design By : ENGINEER	Date : NOV 2024
Drawn By : CAD ENGINEER	Scale : NOT TO SCALE
Checked By : ENGINEER	Job Number : 1
DRAWING NUMBER : ABD9003-ABD-01B	Sheet : 3/6
THIS PRINT AND ITS COPYRIGHT ARE THE PROPERTY OF APEX COMMUNICATIONS SDN BHD	
Size : A3	




LEGEND	NOS.	NOS.	NOS.	NOS.	NOS.	NOS.	NOS.	NOS.	NOS.	NOS.		
12C FOC		Installed 1:4 / 1:8 / 1:32 splitter		Installed Pole (9m)		Suspension		ES30 New Manhole (PIT)		Micro-Trenching (Meter)		MH1 MH NO.
24C FOC	3875	Installed Patch Cord		Installed Pole (7.5M)	133	Tension		ES7 New Manhole(JRC7)	2	Temporary Infra (Meter)		TKS-1 Existing TNB Pole NO.
48C FOC		FDC	1	Installed Pole (6.7M)		Pole Ring		FDP Boundary		Loop / Coil (Meter)		P001 New Pole NO.
96C FOC		Closure	2	Existing TNB Pole		FDP with (1:8) splitter	13	HDD (Meter)		# Active Outdoor Cabinet		CL01 Closure NO.
144C FOC		Existing Closure		Installed Riser		Existing Manhole		Open Cut (Meter)		CO1 FDC NO.		DP1 FDP NO.

ACTUAL HOMEPASS :

KEY PLAN :

POP2 PROJECT IN PERAK

OWNER/DEVELOPER :



MAIN CONTRACTOR :



WCWL COMMUNICATIONS SDN BHD  
127, JALAN PAU 3/3, TAMAN PUNCAK JAYA,  
MUKAH, PUTRA PERANG,  
43300 SERI KEMBANGAN, SELANGOR  
TEL : +603 8958 9953  
E-MAIL : info@wcwlcommunications.com.my

PROJECT TITLE :

CONTRACTOR FOR SURVEY, TECHNICAL PROPOSAL AND WAYLEAVE, & PERMIT APPROVAL - POP2 PROJECT

DRAWING TITLE:

AS-BUILT SITE PLAN DRAWING ABD9003  
SEKOLAH JENIS KEBANGSAAN (TAMIL) LADANG KOTA BAHROE

PROJECT PHASE:  
POP 2

Design By : ENGINEER Date : NOV 2024

Drawn By : CAD ENGINEER Scale : NOT TO SCALE

Checked By : ENGINEER Job Number : 1

DRAWING NUMBER : ABD9003-ABD-01C

Sheet : 4/6

THIS PRINT AND ITS COPYRIGHT ARE THE PROPERTY OF APEX COMMUNICATIONS SDN BHD

Size : A3

Design By : ENGINEER Date : NOV 2024

Drawn By : CAD ENGINEER Scale : NOT TO SCALE

Checked By : ENGINEER Job Number : 1

DRAWING NUMBER : ABD9003-ABD-01C

Sheet : 4/6

THIS PRINT AND ITS COPYRIGHT ARE THE PROPERTY OF APEX COMMUNICATIONS SDN BHD

Size : A3



LEGEND	NOS.	NOS.	NOS.	NOS.	NOS.	NOS.	NOS.	NOS.	NOS.	NOS.	NOS.		
12C FOC		Installed 1:4 / 1:8 / 1:32 splitter		Installed Pole (9m)		Suspension		New Manhole (PIT)		Micro-Trenching (Meter)		MH1	MH NO.
24C FOC	3875	Installed Patch Cord		Installed Pole (7.5M)	133	Tension		New Manhole(JRC7)	2	Temporary Infra (Meter)		TKS-1	Existing TNB Pole NO.
48C FOC		FDC	1	Installed Pole (6.7M)		Pole Ring		FDP Boundary		Loop / Coil (Meter)		P001	New Pole NO.
96C FOC		Closure	2	Existing TNB Pole		FDP with (1:8) splitter	13	HDD (Meter)		#	Active Outdoor Cabinet	CL01	Closure NO.
144C FOC		Existing Closure		Installed Riser		Existing Manhole		Open Cut (Meter)		001	FDC NO.	DP1	FDP NO.

ACTUAL HOMEPASS :

KEY PLAN :  
  
POP2 PROJECT IN PERAK

OWNER/DEVELOPER :

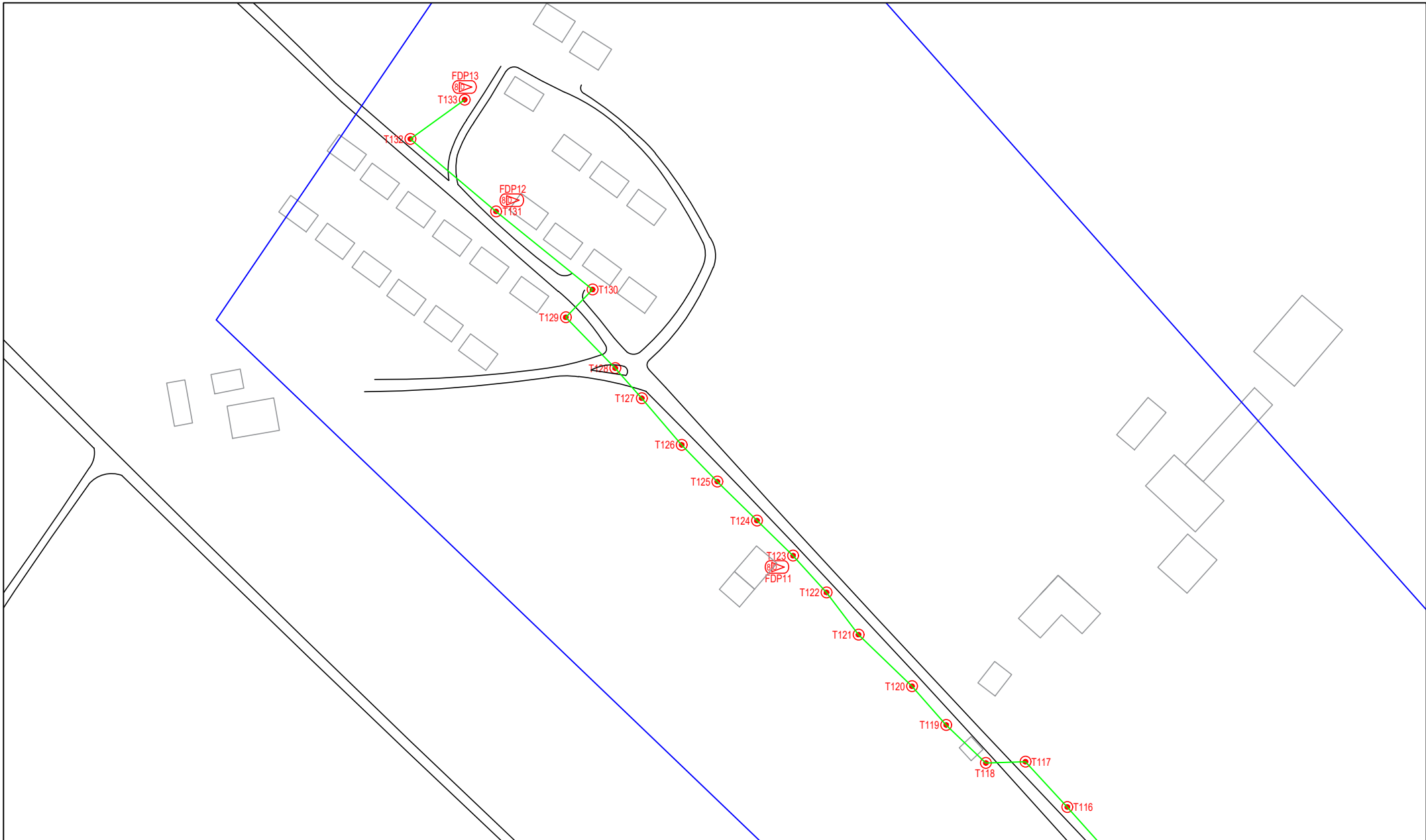
MAIN CONTRACTOR :

PROJECT TITLE :  
  
CONTRACTOR FOR SURVEY, TECHNICAL PROPOSAL AND WAYLEAVE, & PERMIT APPROVAL - POP2 PROJECT

DRAWING TITLE:  
AS-BUILT SITE PLAN DRAWING ABD9003  
SEKOLAH JENIS KEBANGSAAN (TAMIL) LADANG KOTA BAHROE

PROJECT PHASE:  
POP 2

Design By : ENGINEER	Date : NOV 2024
Drawn By : CAD ENGINEER	Scale : NOT TO SCALE
Checked By : ENGINEER	Job Number : 1
DRAWING NUMBER : ABD9003-ABD-01D	Sheet : 5/6
THIS PRINT AND ITS COPYRIGHT ARE THE PROPERTY OF APEX COMMUNICATIONS SDN BHD	
Size : A3	



LEGEND	NOS.	NOS.	NOS.	NOS.	NOS.	NOS.	NOS.	NOS.	NOS.	NOS.	NOS.		
12C FOC		Installed 1:4 / 1:8 / 1:32 splitter		Installed Pole (9m)		Suspension		New Manhole (PIT)		Micro-Trenching (Meter)		MH1	MH NO.
24C FOC	3875	Installed Patch Cord		Installed Pole (7.5M)	133	Tension		New Manhole(JRC7)	2	Temporary Infra (Meter)		TKS-1	Existing TNB Pole NO.
48C FOC		FDC	1	Installed Pole (6.7M)		Pole Ring		FDP Boundary		Loop / Coil (Meter)		P001	New Pole NO.
96C FOC		Closure	2	Existing TNB Pole		FDP with (1:8) splitter	13	HDD (Meter)		#		CL01	Closure NO.
144C FOC		Existing Closure		Installed Riser		Existing Manhole		Open Cut (Meter)		001		DP1	FDP NO.

ACTUAL HOMEPASS :

KEY PLAN :

POP2 PROJECT IN PERAK

OWNER/DEVELOPER :

MAIN CONTRACTOR :

WCWL COMMUNICATIONS SDN BHD  
127, JALAN PAU 3/3, TAMAN PUNCAK JAYA,  
BANDAR PUTRA PERAI,  
43300 SERI KEMBANGAN, SELANGOR  
TEL: +603 9588 9933  
E-MAIL: info@wcwlcommunications.com.my

PROJECT TITLE :

CONTRACTOR FOR SURVEY, TECHNICAL PROPOSAL AND WAYLEAVE, & PERMIT APPROVAL - POP2 PROJECT

DRAWING TITLE:

AS-BUILT SITE PLAN DRAWING ABD9003  
SEKOLAH JENIS KEBANGSAAN (TAMIL) LADANG KOTA BAHROE

PROJECT PHASE:  
POP 2

Design By : ENGINEER Date : NOV 2024

Drawn By : CAD ENGINEER Scale : NOT TO SCALE

Checked By : ENGINEER Job Number : 1

DRAWING NUMBER : ABD9003-ABD-01E

Sheet : 6/6

THIS PRINT AND ITS COPYRIGHT ARE THE PROPERTY OF APEX COMMUNICATIONS SDN BHD

Size : A3

Design By : ENGINEER Date : NOV 2024

Drawn By : CAD ENGINEER Scale : NOT TO SCALE

Checked By : ENGINEER Job Number : 1

DRAWING NUMBER : ABD9003-ABD-01E

Sheet : 6/6

THIS PRINT AND ITS COPYRIGHT ARE THE PROPERTY OF APEX COMMUNICATIONS SDN BHD

Size : A3