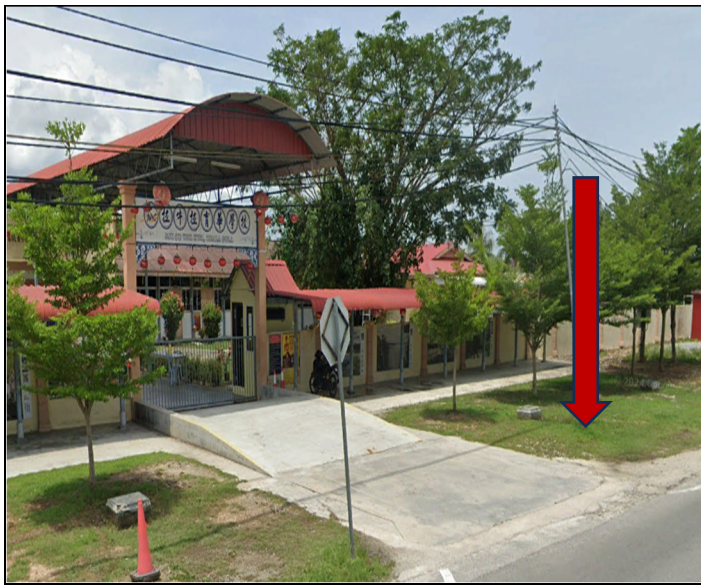


## TECHNICAL PROPOSAL

### POP2 ABC3053 SEKOLAH JENIS KEBANGSAAN (CINA) YUK HWA (D-SIDE)

Company Name	:	SEGALA DELIMA (M) SDN BHD
Company Address	:	No. 8, Jalan Ampang Baru 6B, Pusat Perdagangan Baru, 31350 Ipoh, Perak
Prepared By	:	Mohamad Helmi
Date	:	11/01/2025



**Point A**



**Point B**

#### Starting Point

Site / Boundary Name	:	Sekolah Jenis Kebangsaan (C) Yuk Hwa
District	:	Kuala Kurau
Postcode	:	34350
State	:	Perak
GPS Coordinate	:	4.930127 100.465204
LRD	:	A

#### End Point

Site / Boundary Name	:	Sekolah Jenis Kebangsaan (C) Yuk Hwa
Address	:	Jalan Muhibah 3, Taman Muhibah
District	:	Kuala Kurau
Postcode	:	34350
State	:	Perak
GPS Coordinate	:	4.931272 100.463125
LRD	:	B

## 1.0 WORK SUMMARY

NO	PROPOSED DISTANCE AND METHOD	UNIT	QUANTITY
1	Horizontal Directional Drilling (HDD)	m	60
2	Carriage Way Open Trench(CW)	m	0
3	Grass Verge Open Trenching (GV)	m	0
4	Micro Trenching (MT)	m	0
Total			0

NO	OTHER INFORMATION	UNIT	QUANTITY
1	Installation of Short Span ADSS Fiber Cables	m	1819
2	Install New Pole	ea	69
3	Install New JRC7 Manhole	ea	2
4	Install GI Riser 100mm	ea	2
5	Install Fiber Distribution Point and Closure (Splicing, Termination and Testing)	ea	16
6	Estimated Time Required for Completion	days	60

## 2.0 LOCAL AUTHORITY SUMMARY

Daerah Kerian

NO	ITEMS	Owner	Quantity	Distance (m)
1	HDD	JKR	1	60
		Majlis	-	-
		Estate / Private Land	-	-
2	New Pole	JKR	3	86
		Majlis	66	1,733
		Estate / Private Land	-	-
<b>Total Distance (m)</b>				<b>1879</b>

### 3.0 SITE PLAN (KMZ)

#### 3.1 Overview Site Area (Propose New Pole)



### 3.2 Proposed FDP and Closure



### 3.3 Site Plan - KMZ Routing (All Local Authority)



Red Colour - JKR

Road Blue Colour - Majlis Road

### 3.0 PROPOSED NEW MANHOLE

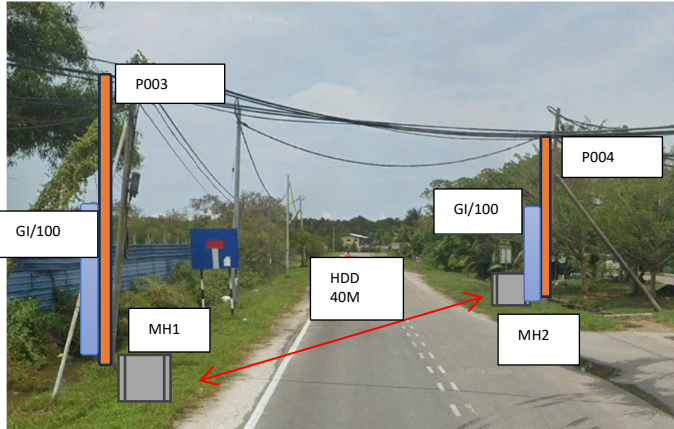
Proposed New Manhole Coordinate					
No.	Manhole Number	Distance (m)	Latitude	Longitude	Local Authority
1	MH01	30m	4.929613	100.465191	JKR Daerah Kerian
2	MH02	30m	4.929369	100.465021	JKR Daerah Kerian

### 4.0 PROPOSED NEW POLE

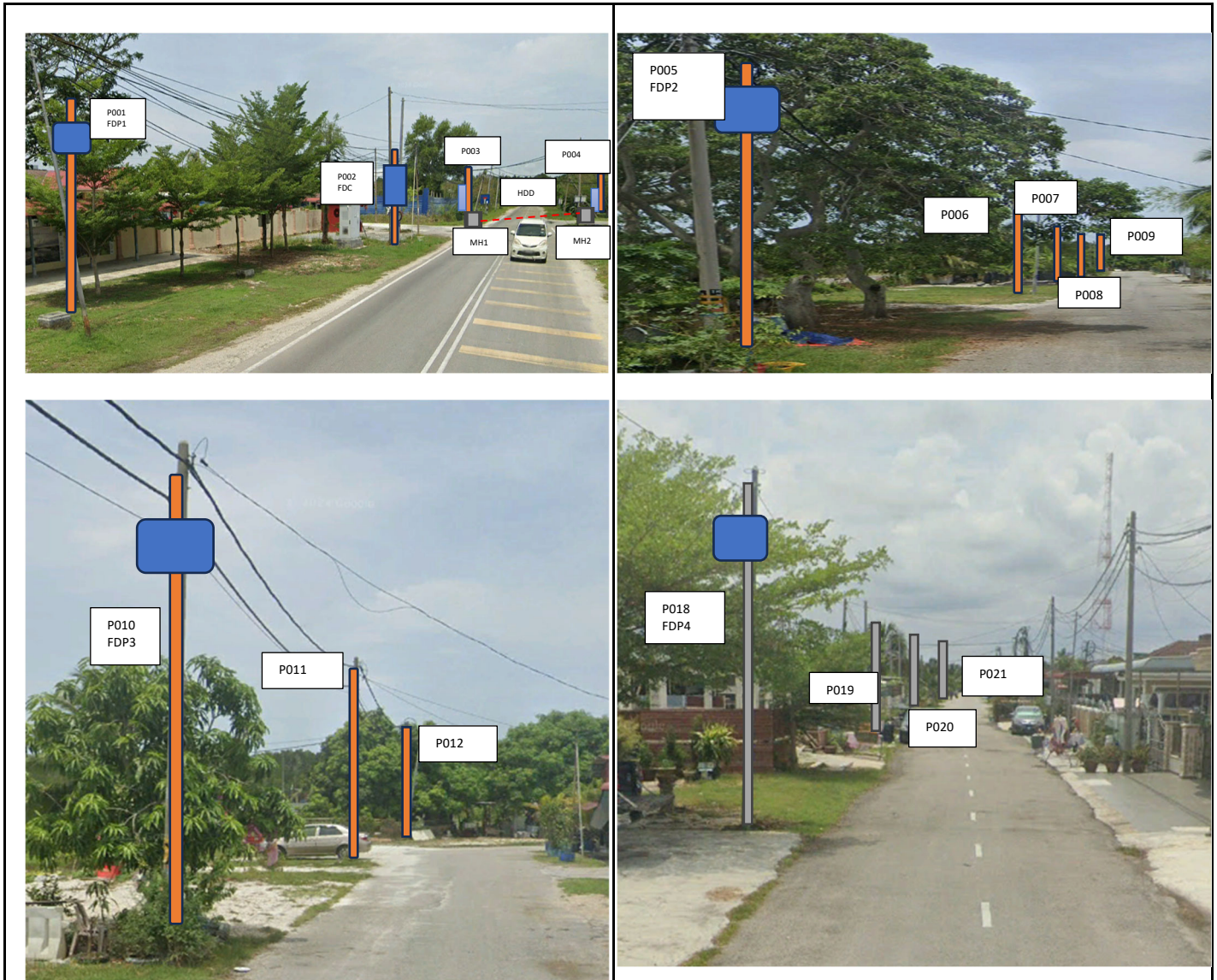
Proposed New Pole Coordinate					
No.	Pole Number	Distance (m)	Latitude	Longitude	Local Authority
1	T001	30M	4.930127	100.465204	JKR Daerah Kerian
2	T002	30M	4.929888	100.465200	JKR Daerah Kerian
3	T003	31M	4.929595	100.465176	JKR Daerah Kerian
4	T004	32M	4.929374	100.465006	Majlis Daerah Kerian
5	T005	30M	4.929070	100.464966	Majlis Daerah Kerian
6	T006	25M	4.928809	100.464947	Majlis Daerah Kerian
7	T007	31M	4.928581	100.464940	Majlis Daerah Kerian
8	T008	25M	4.928316	100.464920	Majlis Daerah Kerian
9	T009	16M	4.928092	100.464915	Majlis Daerah Kerian
10	T010	27M	4.927954	100.464913	Majlis Daerah Kerian
11	T011	23M	4.927739	100.464911	Majlis Daerah Kerian
12	T012	32M	4.927542	100.464892	Majlis Daerah Kerian
13	T013	32M	4.927562	100.464612	Majlis Daerah Kerian
14	T014	16M	4.927588	100.464329	Majlis Daerah Kerian
15	T015	36M	4.927690	100.464251	Majlis Daerah Kerian
16	T016	15M	4.927997	100.464262	Majlis Daerah Kerian
17	T017	26M	4.928131	100.464287	Majlis Daerah Kerian
18	T018	25M	4.928403	100.464294	Majlis Daerah Kerian
19	T019	30M	4.928666	100.464302	Majlis Daerah Kerian
20	T020	30M	4.928970	100.464306	Majlis Daerah Kerian
21	T021	30M	4.929215	100.464318	Majlis Daerah Kerian
22	T022	30M	4.928980	100.464095	Majlis Daerah Kerian
23	T023	30M	4.928991	100.463824	Majlis Daerah Kerian
24	T024	30M	4.929005	100.463406	Majlis Daerah Kerian
25	T025	30M	4.929420	100.464847	Majlis Daerah Kerian
26	T026	30M	4.929432	100.464653	Majlis Daerah Kerian
27	T027	30M	4.929443	100.464494	Majlis Daerah Kerian
28	T028	30M	4.929511	100.464333	Majlis Daerah Kerian
29	T029	30M	4.929529	100.464146	Majlis Daerah Kerian
30	T030	30M	4.929527	100.463843	Majlis Daerah Kerian
31	T031	30M	4.929542	100.463462	Majlis Daerah Kerian
32	T032	30M	4.929560	100.463293	Majlis Daerah Kerian
33	T033	30M	4.929571	100.463101	Majlis Daerah Kerian

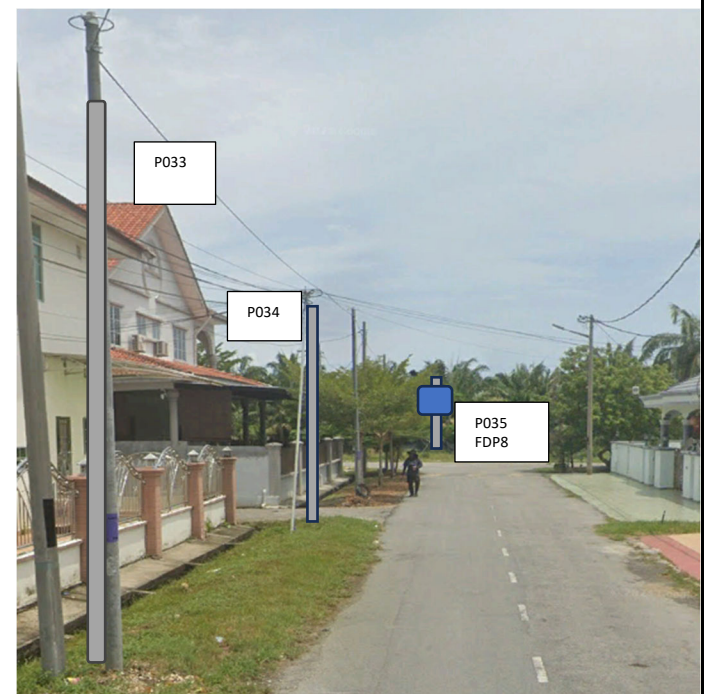
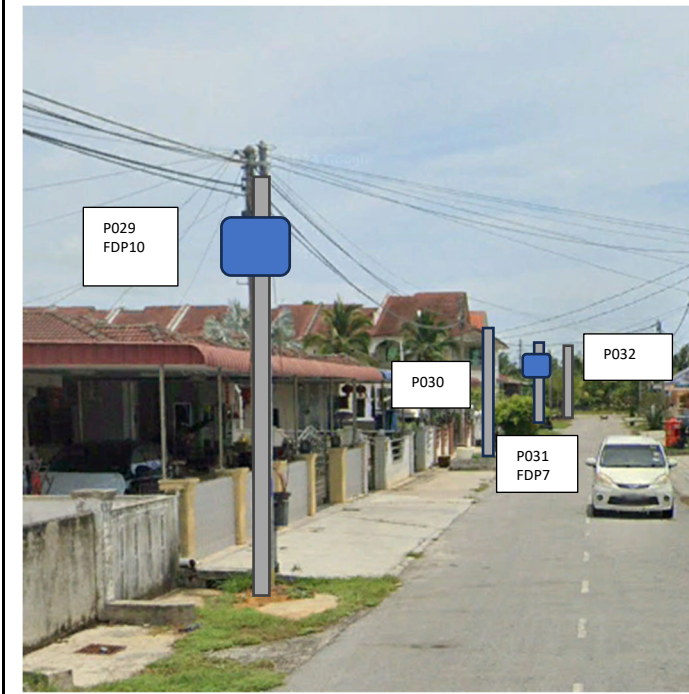
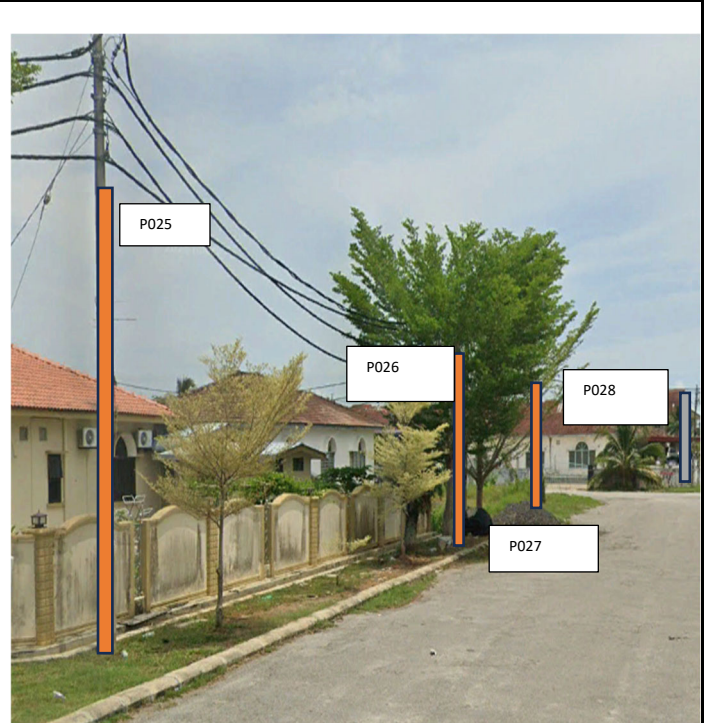
Proposed New Pole Coordinate					
No.	Pole Number	Distance (m)	Latitude	Longitude	Local Authority
34	T034	25M	4.929572	100.462932	Majlis Daerah Kerian
35	T035	25M	4.929575	100.462812	Majlis Daerah Kerian
36	T036	25M	4.929222	100.462790	Majlis Daerah Kerian
37	T037	30M	4.928973	100.462781	Majlis Daerah Kerian
38	T038	30M	4.928757	100.462783	Majlis Daerah Kerian
39	T039	30M	4.928346	100.462769°	Majlis Daerah Kerian
40	T040	30M	4.929378	100.463434	Majlis Daerah Kerian
41	T041	30M	4.929189	100.463440	Majlis Daerah Kerian
42	T042	30M	4.928657	100.463411	Majlis Daerah Kerian
43	T043	30M	4.928388	100.463397	Majlis Daerah Kerian
44	T044	30M	4.929815	100.464327	Majlis Daerah Kerian
45	T045	30M	4.930083	100.464336	Majlis Daerah Kerian
46	T046	30M	4.930072	100.464115	Majlis Daerah Kerian
47	T047	30M	4.930088	100.463887	Majlis Daerah Kerian
48	T048	30M	4.930095	100.463581	Majlis Daerah Kerian
49	T049	30M	4.930100	100.463170	Majlis Daerah Kerian
50	T050	30M	4.930386	100.464360	Majlis Daerah Kerian
51	T051	30M	4.930578	100.464363	Majlis Daerah Kerian
52	T052	30M	4.930629	100.464121	Majlis Daerah Kerian
53	T053	30M	4.930633	100.463898	Majlis Daerah Kerian
54	T054	30M	4.930633	100.463641	Majlis Daerah Kerian
55	T055	30M	4.930641	100.463446	Majlis Daerah Kerian
56	T056	30M	4.930651	100.463239	Majlis Daerah Kerian
57	T057	30M	4.930758	100.464371	Majlis Daerah Kerian
58	T058	30M	4.930925	100.464380	Majlis Daerah Kerian
59	T059	30M	4.931135	100.464384	Majlis Daerah Kerian
60	T060	30M	4.931228	100.464369	Majlis Daerah Kerian
61	T061	30M	4.931243	100.464015	Majlis Daerah Kerian
62	T062	30M	4.931259	100.463734	Majlis Daerah Kerian
63	T063	30M	4.931262	100.463397	Majlis Daerah Kerian
64	T064	30M	4.931272	100.463125	Majlis Daerah Kerian
65	T065	30M	4.929737	100.464660	Majlis Daerah Kerian
66	T066	25M	4.929983	100.464667	Majlis Daerah Kerian
67	T067	25M	4.930297	100.464666	Majlis Daerah Kerian
68	T068	30M	4.930658	100.464687	Majlis Daerah Kerian
69	T069	30M	4.931022	100.464710	Majlis Daerah Kerian

### 5.0 SITE PHOTOS - PROPOSED HDD AND NEW MANHOLE

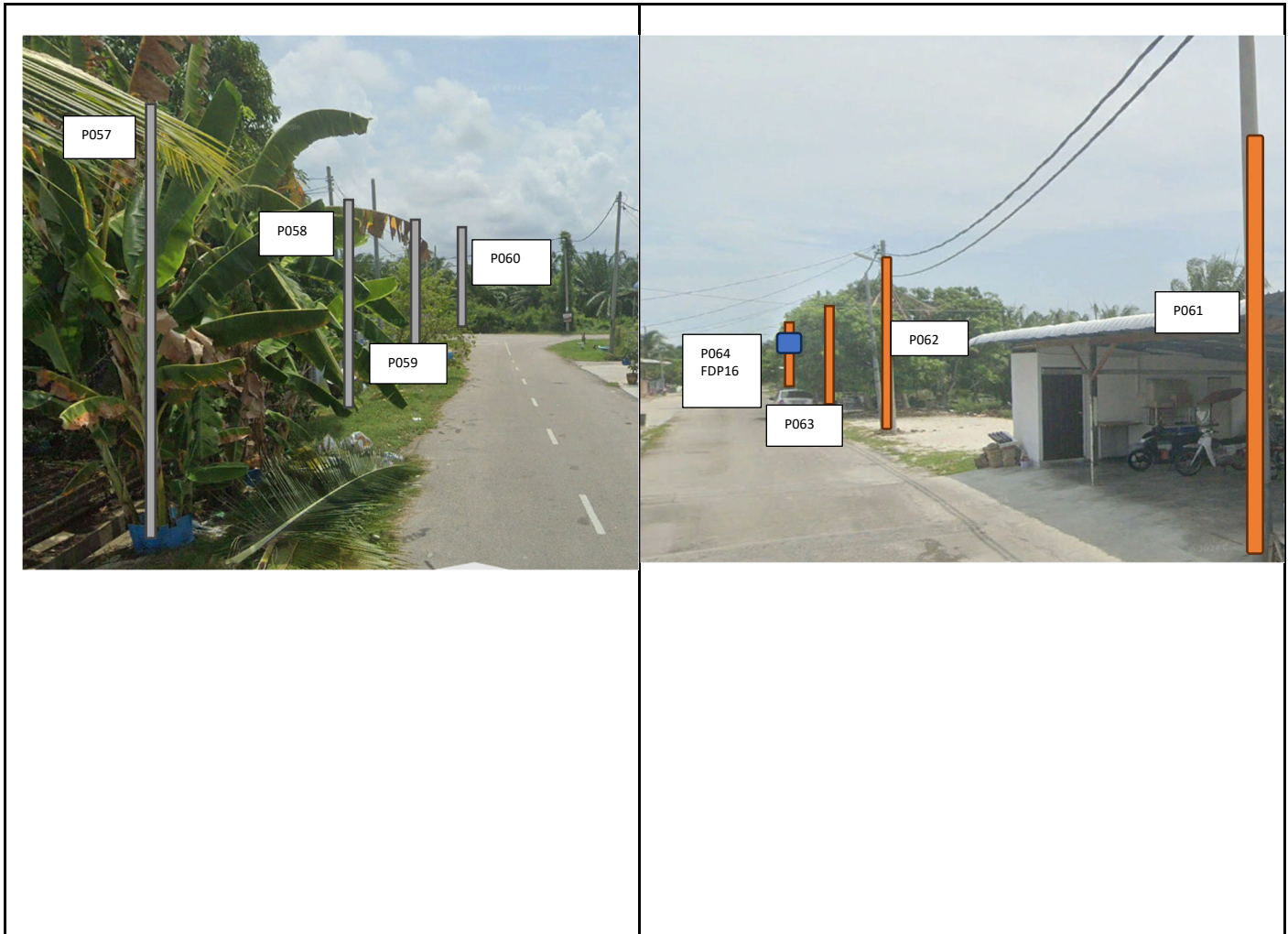


**5.0 SITE PHOTOS - PROPOSED NEW POLE**



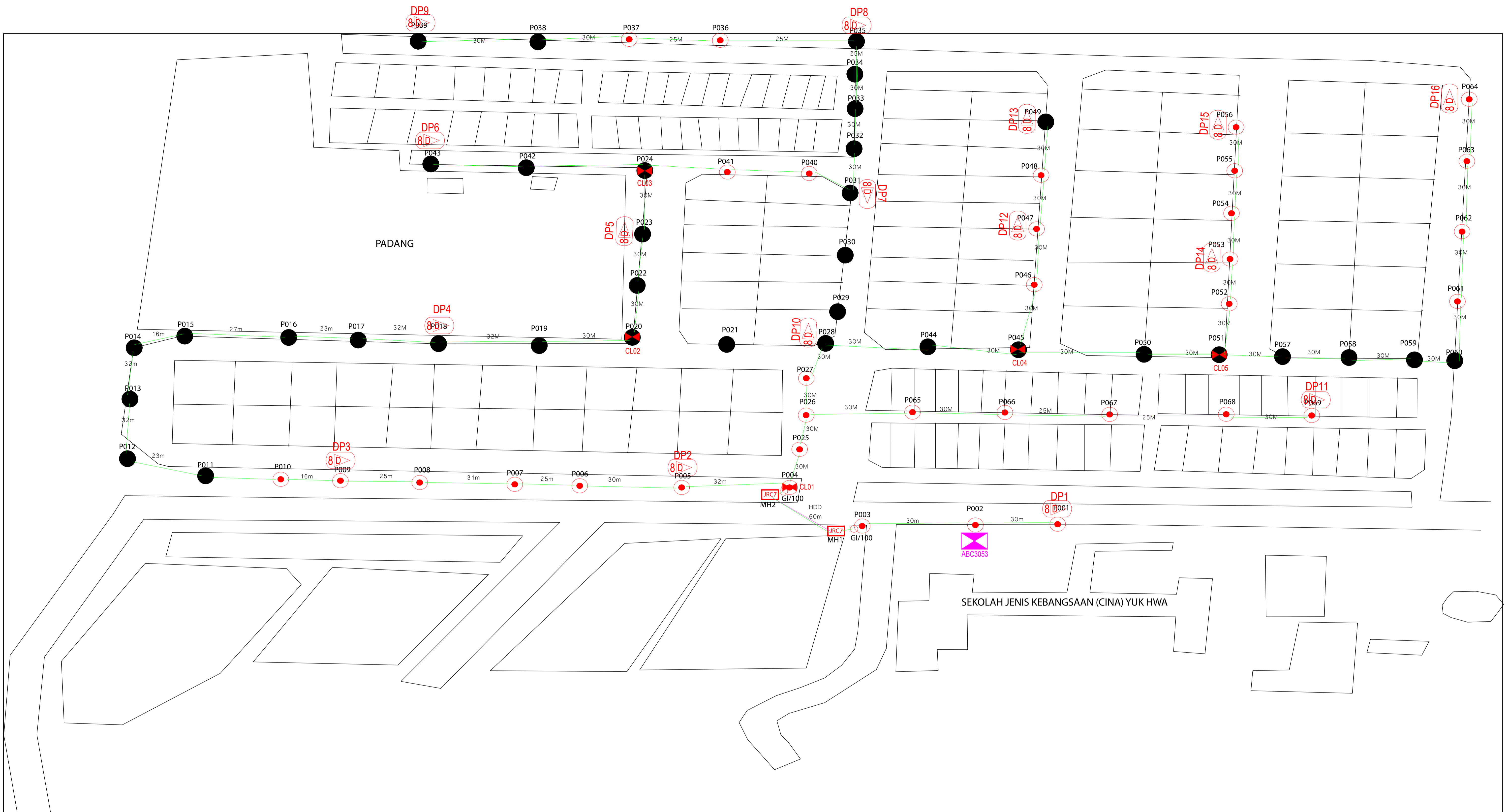






## 6.0 3<sup>rd</sup> PARTIES DEPENDENCIES

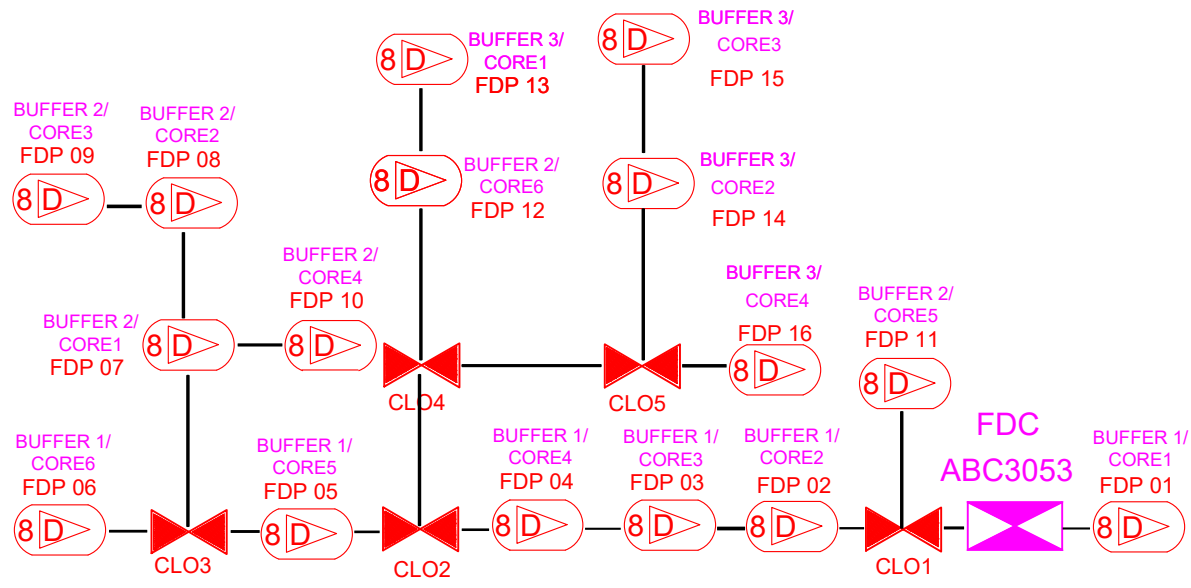
NO	LOCAL COUNCIL / AUTHORITY	REMARK
1	Majlis Daerah Kerian	1,733m
2	JKR Daerah Kerian	146m



12C FOC	Installed 1:4 / 1:8 / 1:32 splitter	Installed Pole (9m)	Suspension	New Manhole (PIT)	Micro-Trenching (Meter)	MH1	MH NO.
24C FOC	Installed Patch Cord	Installed Pole (7.5M)	Tension	New Manhole(JRC7)	Temporary Infra (Meter)	TKS-1	Existing TNB Pole NO.
48C FOC	FDC	Installed Pole (6.7M)	Pole Ring	FDP Boundary	Loop / Coil (Meter)	P001	New Pole NO.
96C FOC	Closure	Existing Pole	FDP with (1:8) splitter	HDD (Meter)	Active Outdoor Cabinet	CL01	Closure NO.
144C FOC	Existing Closure	Installed Riser	Existing Manhole	Open Cut (Meter)	C01	DP1	FDP NO.

ACTUAL HOMEPASS :

KEY PLAN: 	PROJECT OWNER: 	MAIN CONTRACTOR: 	SUB-CONTRACTOR: 	PROJECT TITLE: CONTRACT FOR SURVEY TECHNICAL PROPOSE AND WAYLEAVE & PERMITTING APPROVAL - POP 2 PROJECT	DRAWING TITLE: ABC3053 SEKOLAH JENIS KEBANGSAAN (CINA) YUK HWA	Design By : HELMI Drawn By : HELMI Checked By : (SD PIC)	Date : 28 NOV 2024 Scale : 1 : 5000 Job Number :	DRAWING NUMBER : PROJECT PHASE: POP 2 PROJECT	Sheet : 1 / 1 Size : A1
---------------	--------------------	----------------------	---------------------	--	--	--	--	---	----------------------------------



	12C FOC	Installed 1:4 / 1:8 / 1:32 splitter		Installed Pole (9m)		Suspension		New Manhole (PIT)		MH1	MH NO.	
	24C FOC	Installed Patch Cord		Installed Pole (7.5M)		Tension		New Manhole (RC7)		TKS-1	Existing TNB Pole NO.	
	48C FOC	FDC		Installed Pole (6.7M)		Pole Ring		FDP Boundary		PK01	New Pole NO.	
	96C FOC	Closure		Existing TNB Pole		FDP with (1:8) splitter		HDD (Meter)		CLO1	Closure NO.	
	144C FOC	Existing Closure		Installed Riser		Existing Manhole		Open Cut (Meter)		DPT	FDP NO.	

KEY PLAN:	PROJECT OWNER: 	MAIN CONTRACTOR: 	SUB-CONTRACTOR: 	PROJECT TITLE: ABC3053 SEKOLAH JENIS KEBANGSAAN (CINA) YUK HWA	DRAWING TITLE: CORE ASSIGNMENT DRAWING	Design By :	Date : 2024
					PROJECT PHASE: POP 2	Drawn By :	Scale : 1 : 5000
						Checked By :	Job Number :
						DRAWING NUMBER :	Sheet : 1 / 1
							Size : A1

ACTUAL HOMEPASS :