

TECHNICAL PROPOSAL

POP2 ABA7025 SEKOLAH KEBANGSAAN PLANG (D-SIDE)

Company Name : WabTech Sdn Bhd
Company Address : 101-1, Jalan Metro Sendayan, 71950 Seremban, Negeri Sembilan.
Prepared By : Sharifful Bahrin bin Che Meh
Date : 22/1/2025



Point A



Point B

Starting Point

Site / Boundary Name : Sekolah Kebangsaan Plang
 Address : Kampung Plang, 33320 Gerik, Perak
 District : Gerik
 Postcode : 33320
 State : Perak
 GPS Coordinate : 5.573113, 101.098773
 LRD : A

End Point

Site / Boundary Name : Kampung Plang
 Address : Jalan Baling-Kuala Kangsar, 33320 Gerik, Perak
 District : Gerik
 Postcode : 33320
 State : Perak
 GPS Coordinate : 5.563798, 101.108513
 LRD : B



PROJEK PENYEDIAAN DAN PENYELENGGARAAN POINT OF PRESENCE (POP)
FASA 2: HAB INFRASTRUTUK GENTIAN OPTIK BERHAMPIRAN DENGAN
SEKOLAH, KAWASAN PERINDUSTRIAN, PREMIS KERAJAAN DAN KOMUNITI
SEKITARNYA OLEH KEMENTERIAN KOMUNIKASI MALAYSIA – ZON UTARA
(KKMM.400-11/17/132(1))



WRBTECH SDN BHD
ESTABLISHED 2011

1.0 WORK SUMMARY

NO	PROPOSED DISTANCE AND METHOD	UNIT	QUANTITY
1	Horizontal Directional Drilling (HDD)	m	34
2	Carriage Way Open Trench (CW)	m	0
3	Grass Verge Open Trenching (GV)	m	0
4	Micro Trenching (MT)	m	0
Total			

NO	OTHER INFORMATION	UNIT	QUANTITY
1	Installation of Short Span ADSS Fibre Cables	m	3179
2	Install New Pole	ea	71
3	Install New JRC7 Manhole	ea	2
4	Install GI Riser 100mm	ea	2
5	Install Fiber Distribution Point and Closure (Splicing, Termination and Testing)	ea	16
6	Estimated Time Required for Completion	days	30



PROJEK PENYEDIAAN DAN PENYELENGGARAAN POINT OF PRESENCE (POP)
FASA 2: HAB INFRASTRUTUK GENTIAN OPTIK BERHAMPIRAN DENGAN
SEKOLAH, KAWASAN PERINDUSTRIAN, PREMIS KERAJAAN DAN KOMUNITI
SEKITARNYA OLEH KEMENTERIAN KOMUNIKASI MALAYSIA – ZON UTARA
(KKMM.400-11/17/132(1))



WABTECH SDN BHD
1508087-X

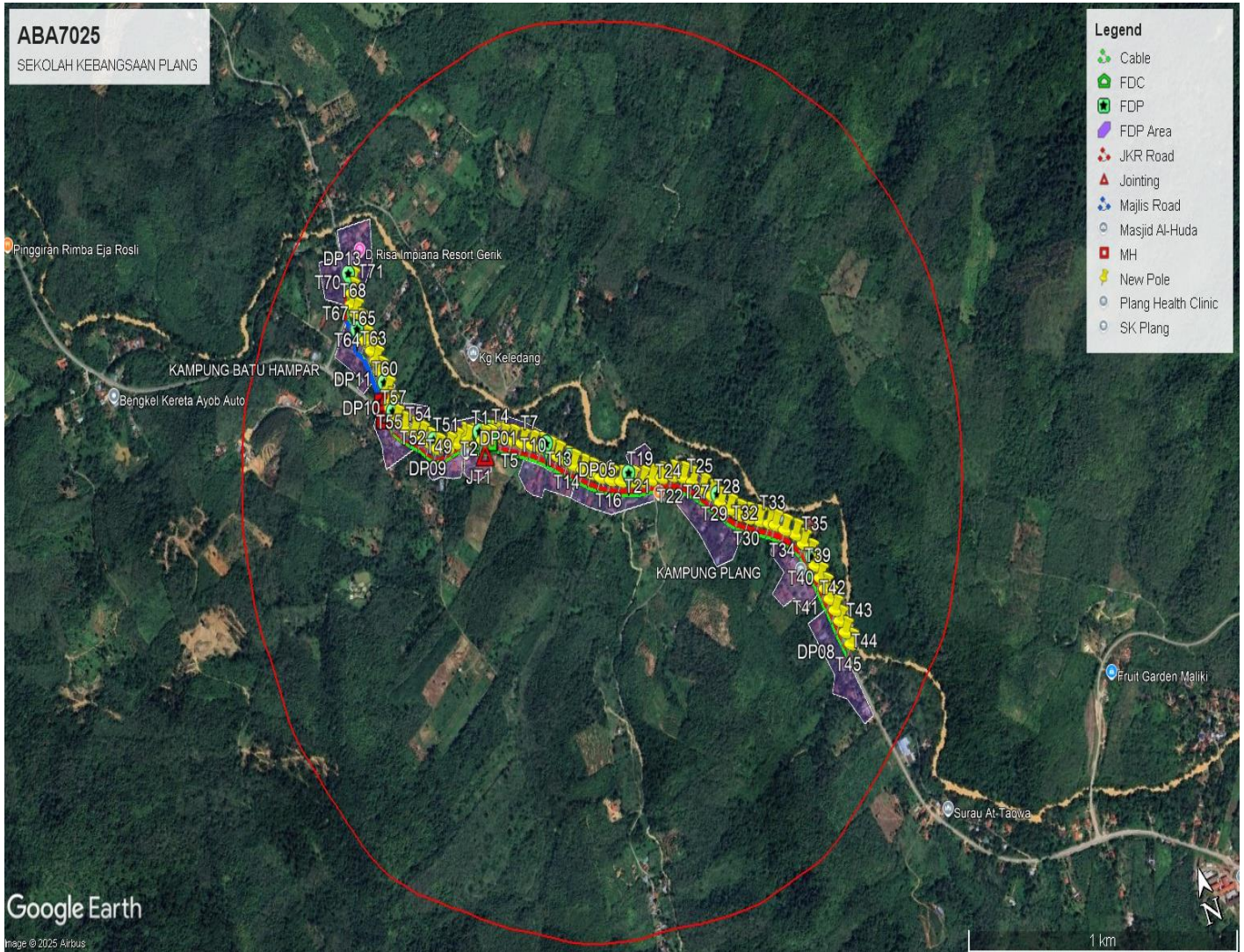
2.0 LOCAL AUTHORITY SUMMARY

Daerah Gerik

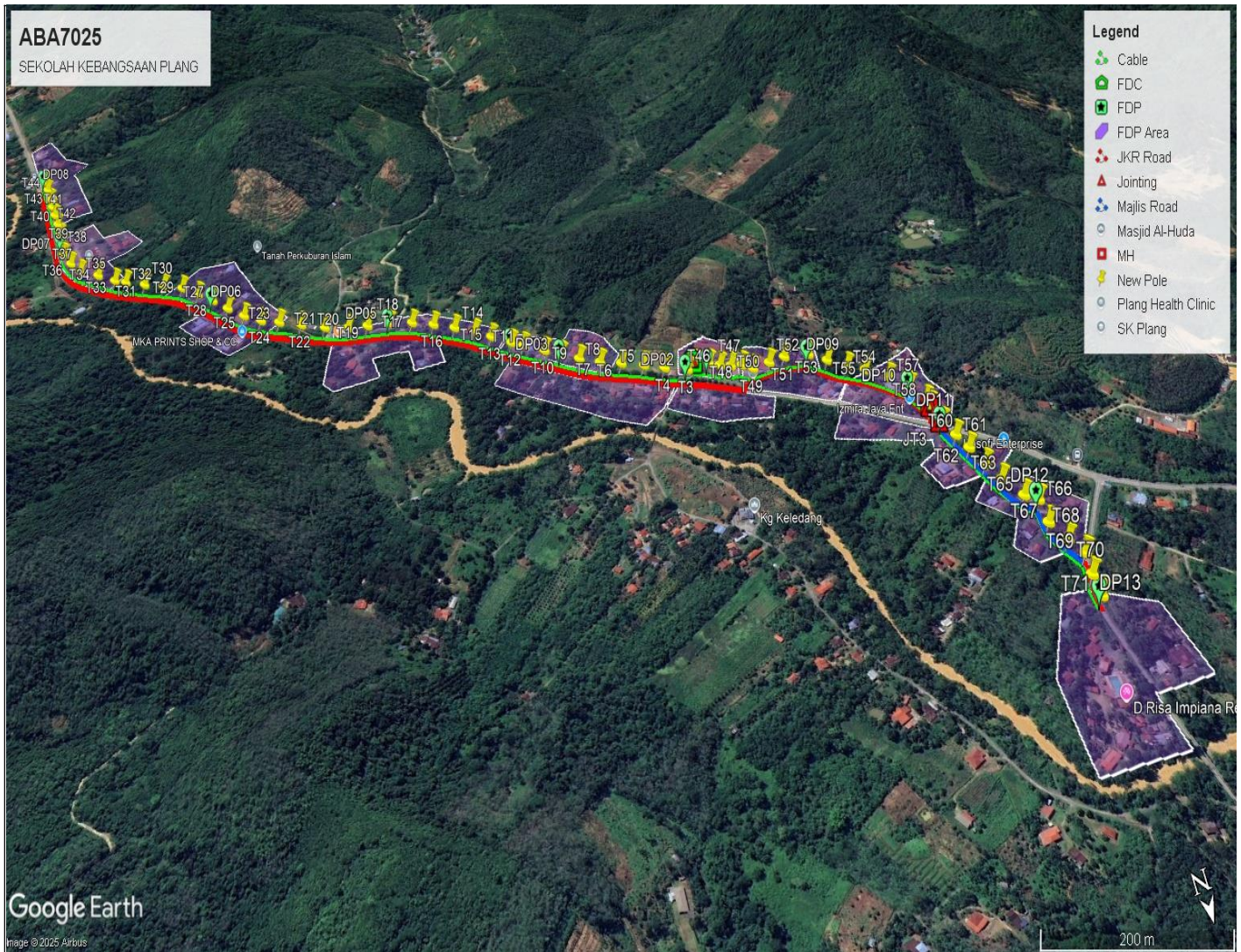
NO	ITEMS	Owner	Quantity	Distance (m)
1	HDD	JKR	1	34
		Majlis	-	-
		PDT	-	-
2	New Pole	JKR	62	2139
		Majlis	9	296
		PDT	-	-
Total Distance (m)				2469

3.0 SITE PLAN (KMZ)

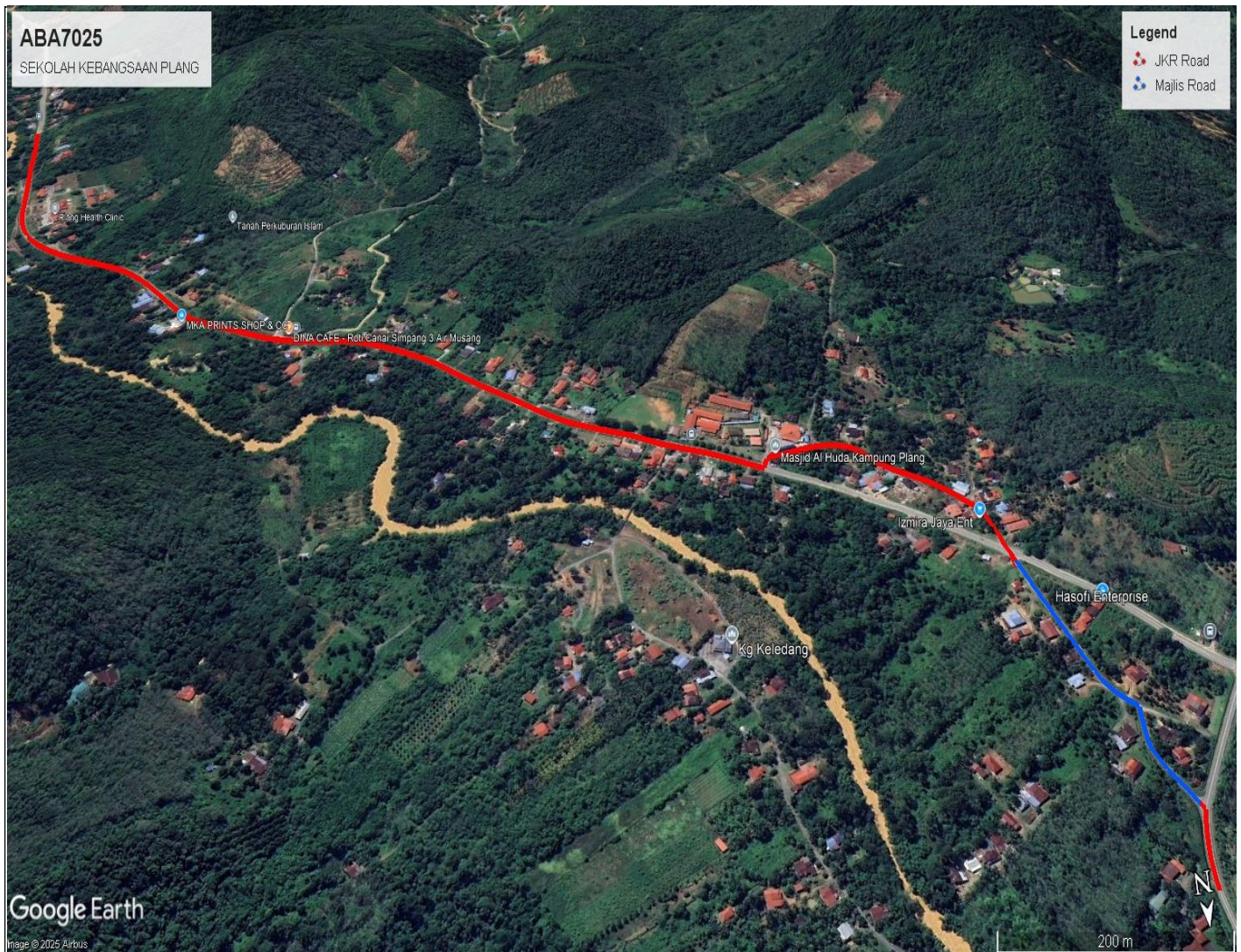
3.1 Overview Site Area



3.2 Site boundary



3.3 Road Boundary

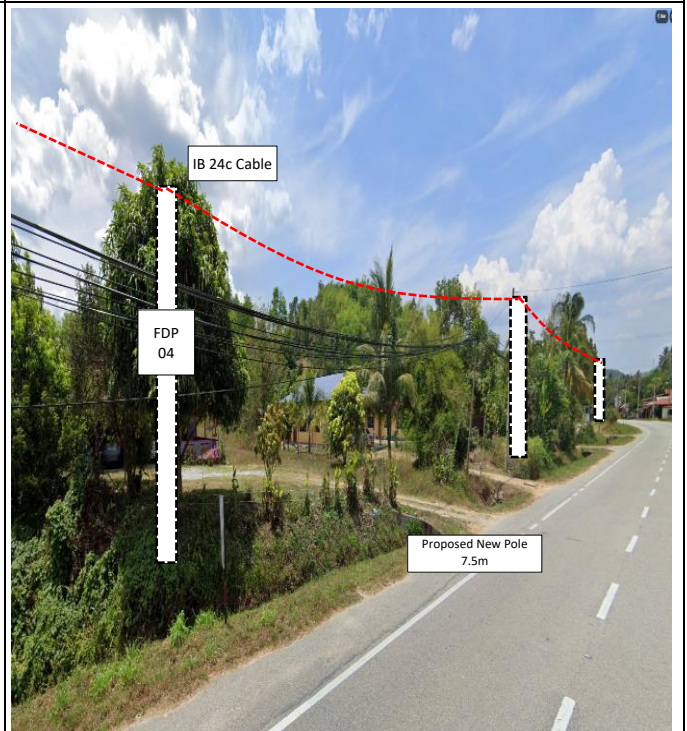
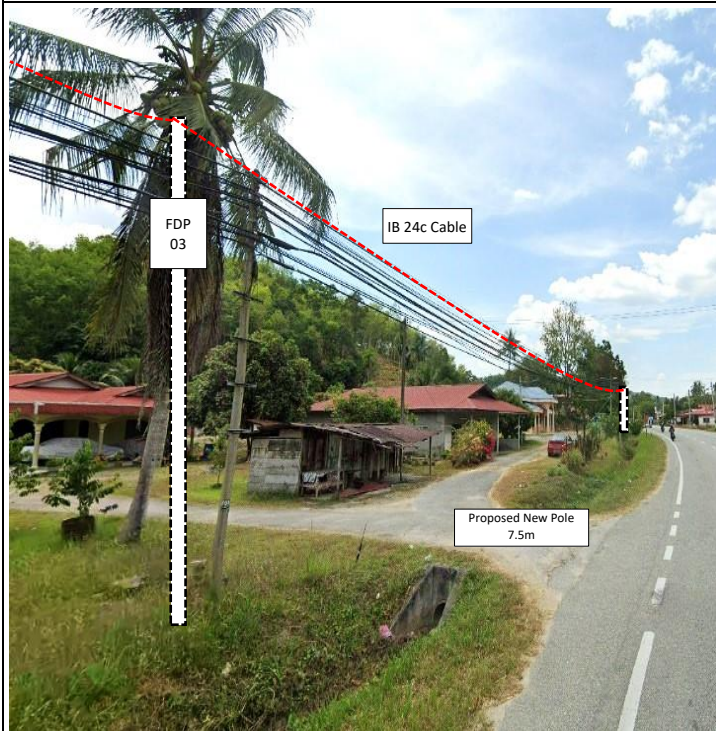
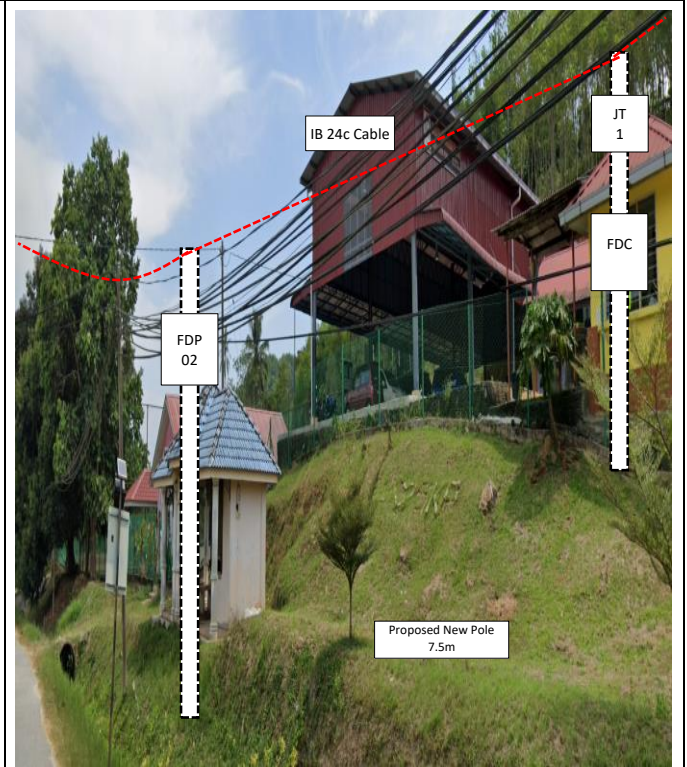
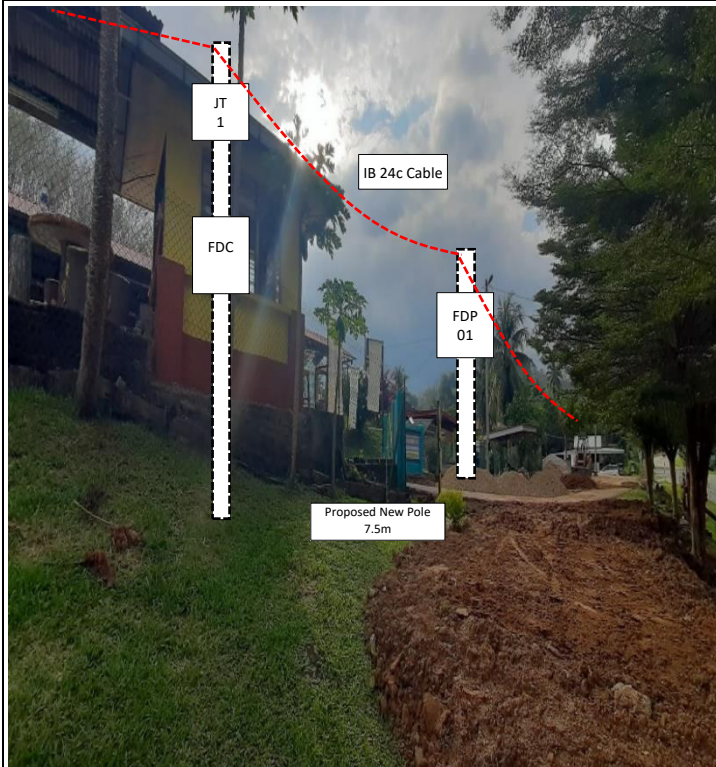


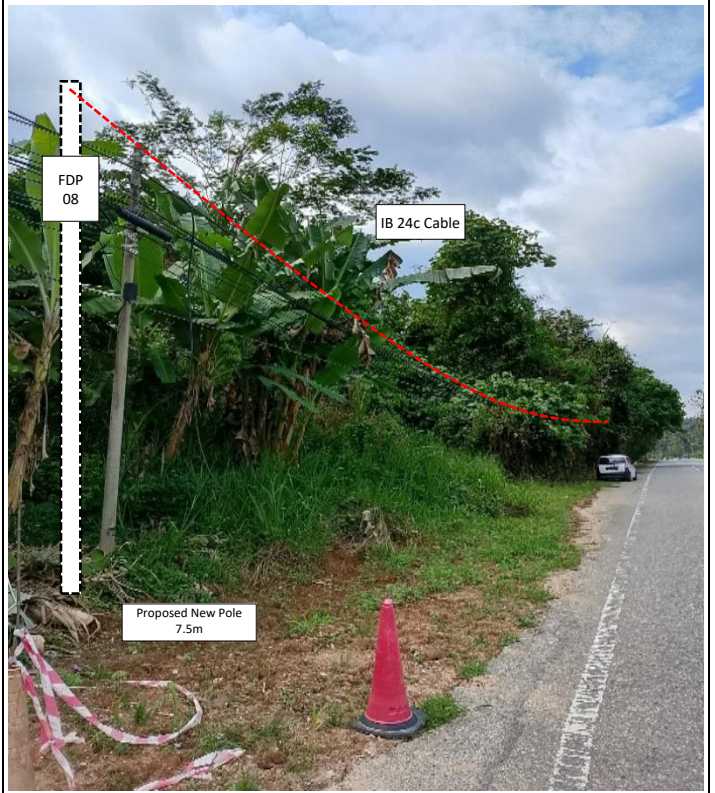
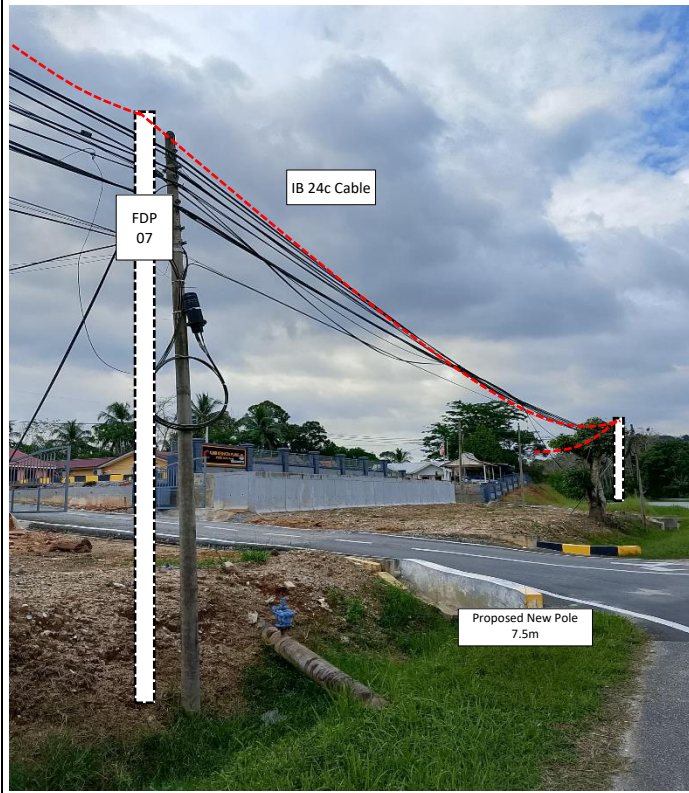
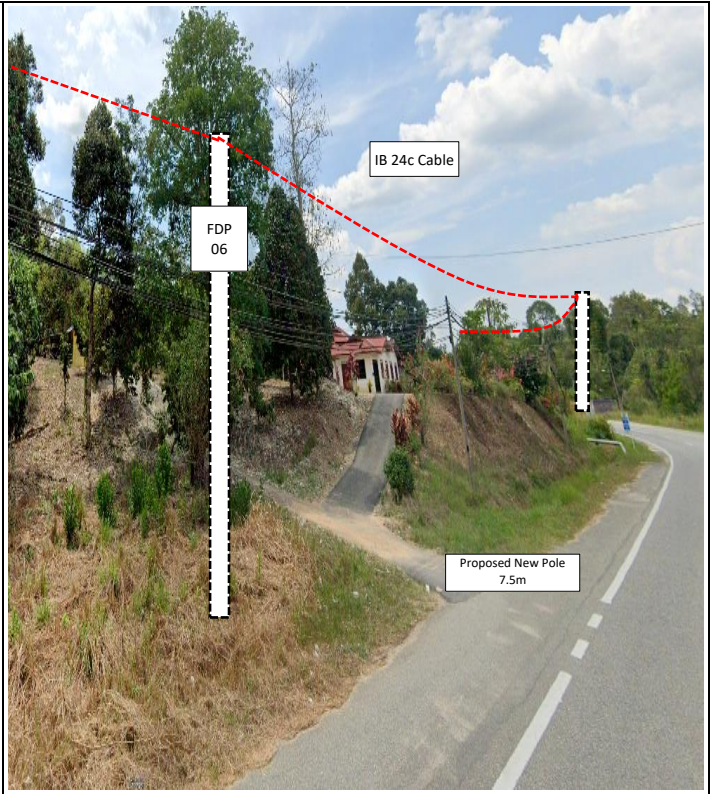
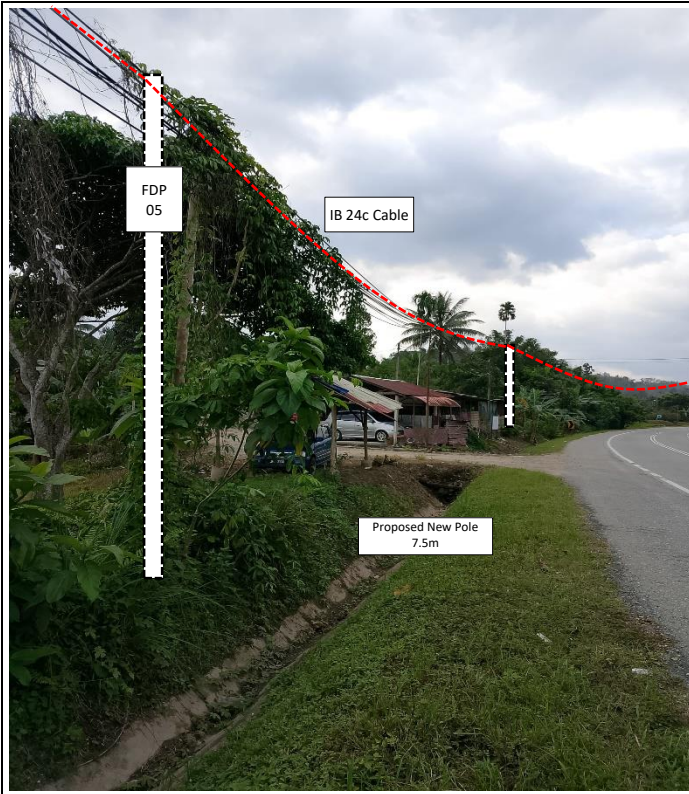
4.0 PROPOSED NEW POLE

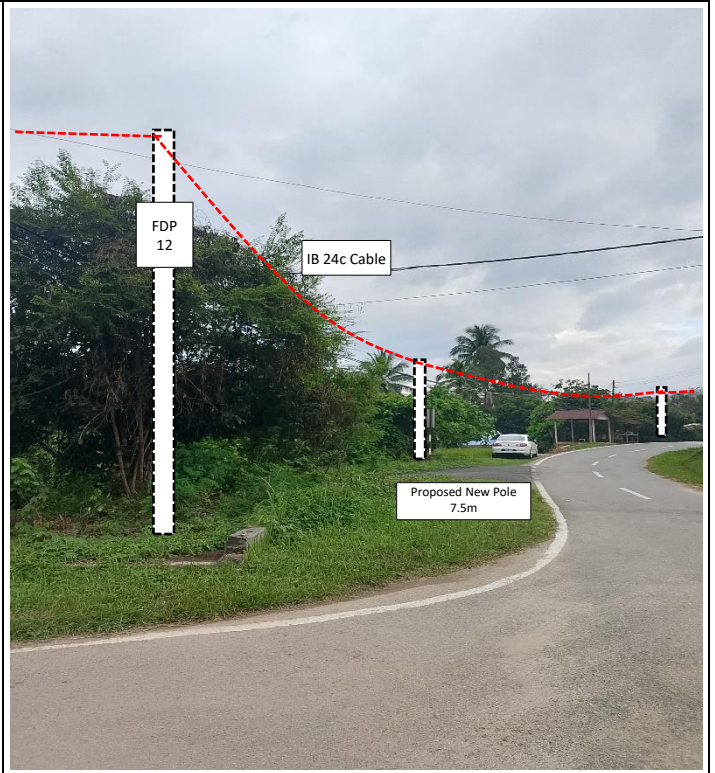
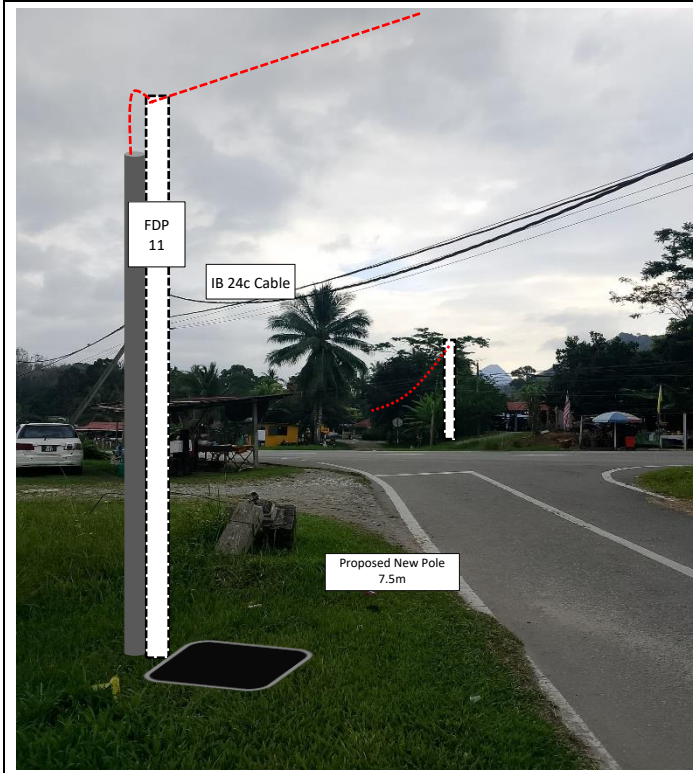
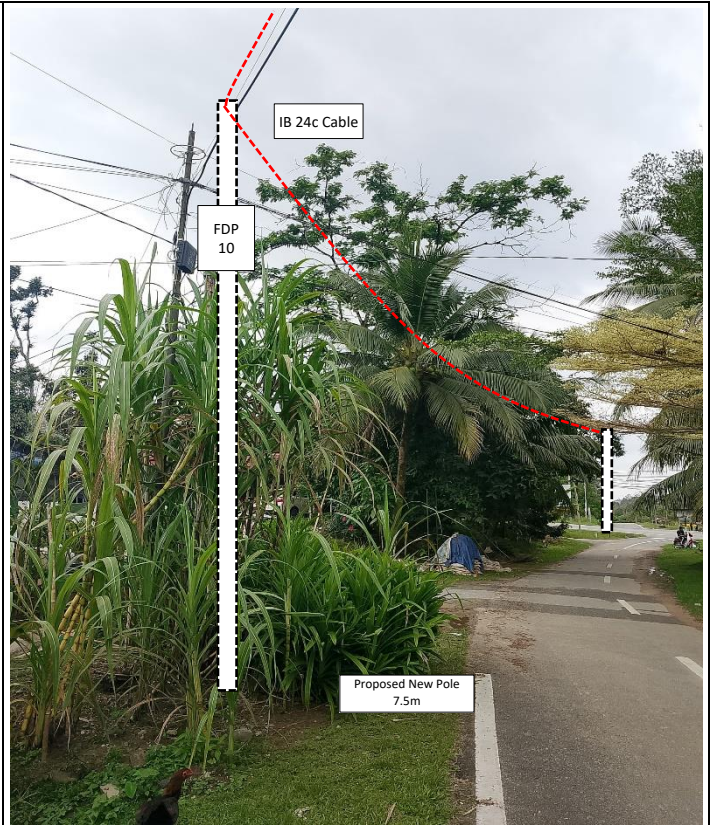
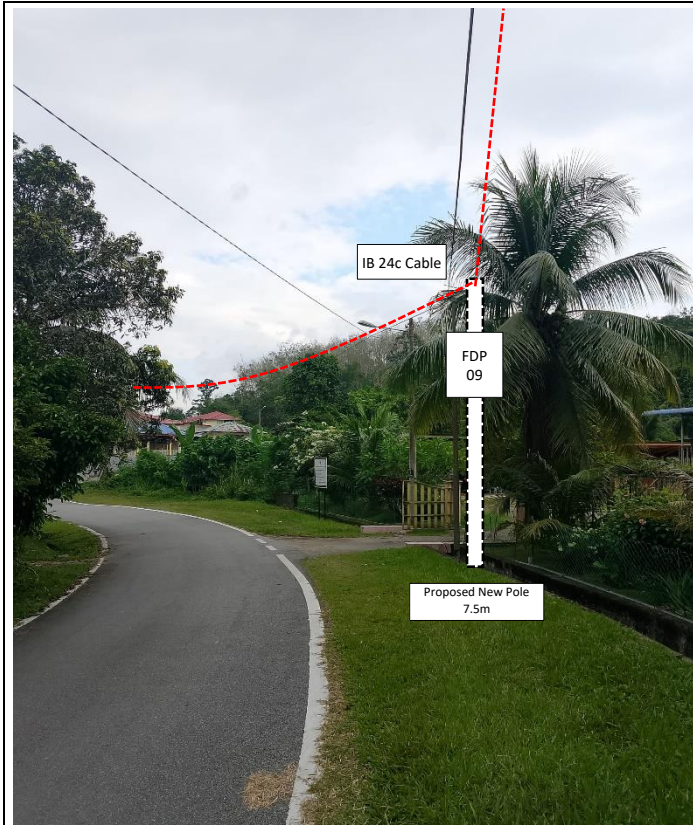
Proposed New Pole Coordinate					
No.	Pole Number	Distance (m)	Latitude	Longitude	Local Authority
1	FDC POLE	23	5.573038	101.098971	JKR
2	T001	23	5.573113	101.098773	JKR
3	T002	23	5.573038	101.098971	JKR
4	T003	17	5.573094	101.099114	JKR
5	T004	38	5.572919	101.099415	JKR
6	T005	35	5.572772	101.099691	JKR
7	T006	38	5.572582	101.099986	JKR
8	T007	37	5.572420	101.100271	JKR
9	T008	37	5.572230	101.100541	JKR
10	T009	33	5.572043	101.100770	JKR
11	T010	32	5.571851	101.100981	JKR
12	T011	41	5.571588	101.101245	JKR
13	T012	23	5.571448	101.101395	JKR
14	T013	38	5.571221	101.101660	JKR
15	T014	32	5.571031	101.101882	JKR
16	T015	38	5.570819	101.102153	JKR
17	T016	38	5.570638	101.102451	JKR
18	T017	38	5.570488	101.102764	JKR
19	T018	40	5.570356	101.103102	JKR
20	T019	39	5.570238	101.103435	JKR
21	T020	34	5.570174	101.103735	JKR
22	T021	38	5.570101	101.104083	JKR
23	T022	39	5.570025	101.104428	JKR
24	T023	40	5.569858	101.104748	JKR
25	T024	38	5.569635	101.105016	JKR
26	T025	41	5.569361	101.105261	JKR
27	T026	40	5.569080	101.105493	JKR
28	T027	38	5.568796	101.105707	JKR
29	T028	38	5.568539	101.105927	JKR
30	T029	39	5.568285	101.106162	JKR
31	T030	40	5.568087	101.106453	JKR
32	T031	39	5.567903	101.106753	JKR
33	T032	22	5.567712	101.107051	JKR
34	T033	39	5.567609	101.107221	JKR
35	T034	42	5.567378	101.107485	JKR
36	T035	39	5.567139	101.107775	JKR
37	T036	42	5.566811	101.107940	JKR
38	T037	37	5.566462	101.108069	JKR

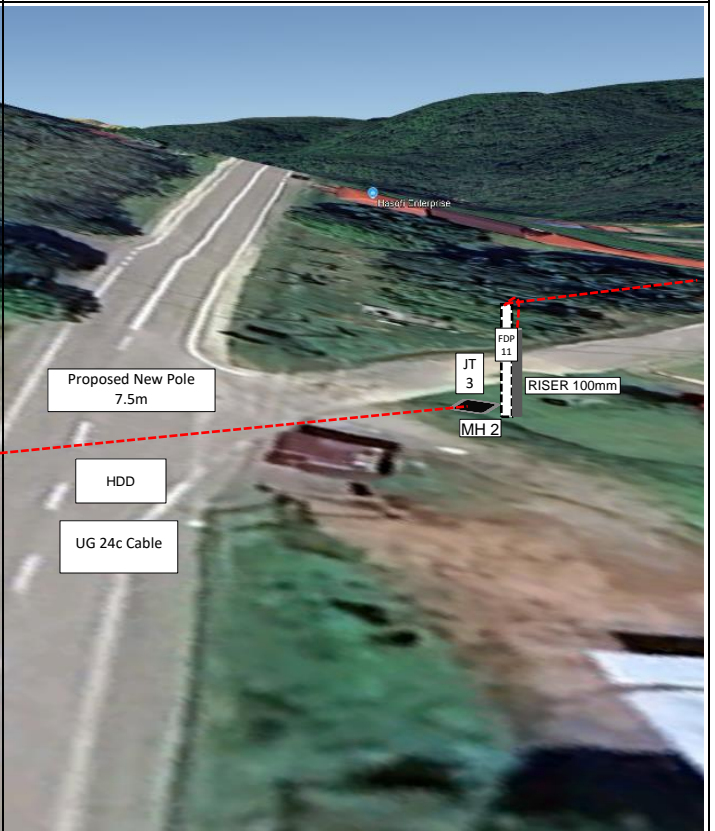
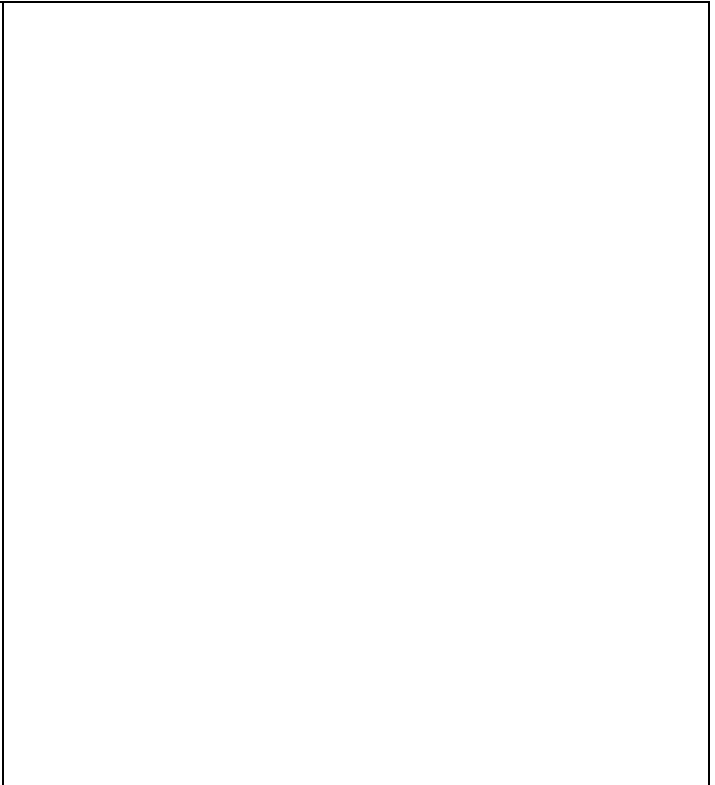
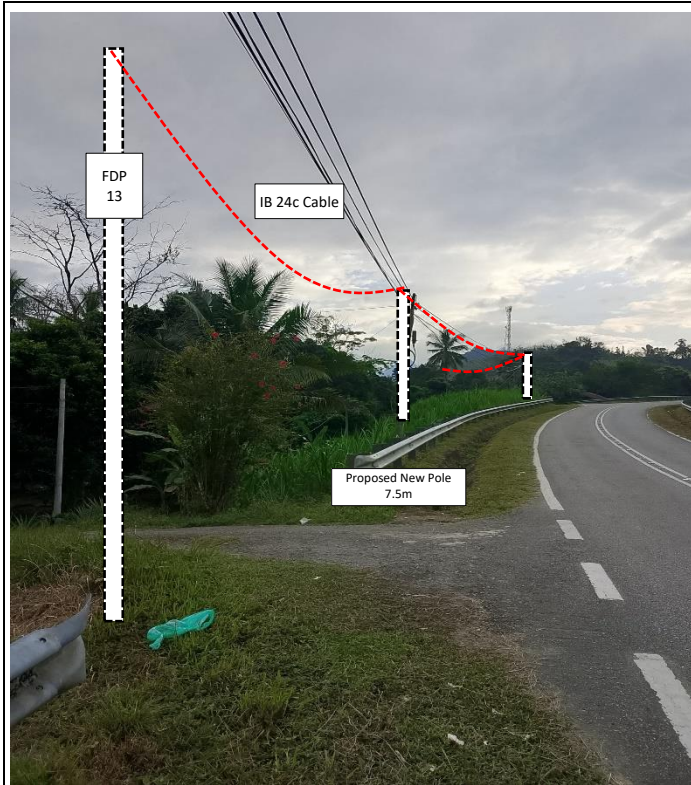
39	T038	40	5.566139	101.108109	JKR
40	T039	35	5.565780	101.108160	JKR
41	T040	35	5.565458	101.108209	JKR
42	T041	36	5.565144	101.108269	JKR
43	T042	36	5.564812	101.108328	JKR
44	T043	39	5.564488	101.108380	JKR
45	T044	40	5.564149	101.108443	JKR
46	T045	40	5.563798	101.108513	JKR
47	T046	18	5.573205	101.098636	JKR
48	T047	19	5.573258	101.098477	JKR
49	T048	20	5.573279	101.098301	JKR
50	T049	19	5.573395	101.098171	JKR
51	T050	32	5.573362	101.097884	JKR
52	T051	29	5.573340	101.097618	JKR
53	T052	41	5.573440	101.097257	JKR
54	T053	33	5.573664	101.097062	JKR
55	T054	35	5.573918	101.096870	JKR
56	T055	30	5.574102	101.096669	JKR
57	T056	39	5.574348	101.096416	JKR
58	T057	37	5.574619	101.096228	JKR
59	T058	39	5.574964	101.096175	JKR
60	T059	16	5.575101	101.096180	JKR
61	T060	31	5.575430	101.096216	Majlis Daerah Gerik
62	T061	31	5.575711	101.096187	Majlis Daerah Gerik
63	T062	36	5.575987	101.096165	Majlis Daerah Gerik
64	T063	34	5.576311	101.096134	Majlis Daerah Gerik
65	T064	38	5.576609	101.096090	Majlis Daerah Gerik
66	T065	38	5.576935	101.095979	Majlis Daerah Gerik
67	T066	20	5.577072	101.095858	Majlis Daerah Gerik
68	T067	39	5.577407	101.095960	Majlis Daerah Gerik
69	T068	36	5.577730	101.095928	Majlis Daerah Gerik
70	T069	29	5.577983	101.095876	JKR
71	T070	33	5.578261	101.095998	JKR
72	T071	32	5.578540	101.096090	JKR
73	MH1	34	5.575111	101.096173	JKR
74	MH2	34	5.575422	101.096215	JKR

5.0 SITE PHOTOS - PROPOSED NEW POLE











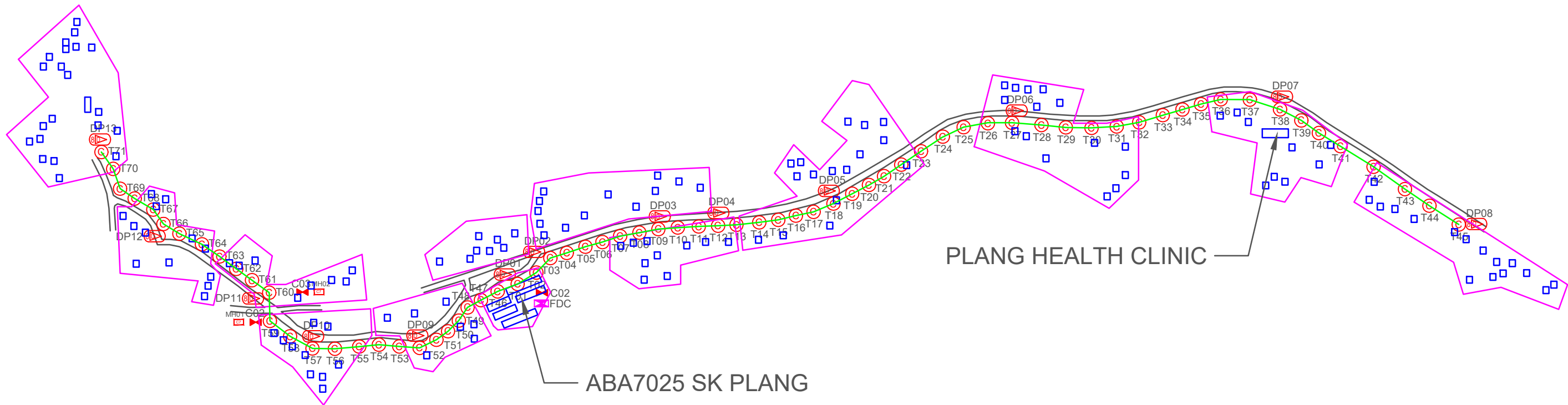
PROJEK PENYEDIAAN DAN PENYELENGGARAAN POINT OF PRESENCE (POP)
FASA 2: HAB INFRASTRUTUK GENTIAN OPTIK BERHAMPIRAN DENGAN
SEKOLAH, KAWASAN PERINDUSTRIAN, PREMIS KERAJAAN DAN KOMUNITI
SEKITARNYA OLEH KEMENTERIAN KOMUNIKASI MALAYSIA – ZON UTARA
(KKMM.400-11/17/132(1))



WABTECH SDN BHD
(1398387-X)

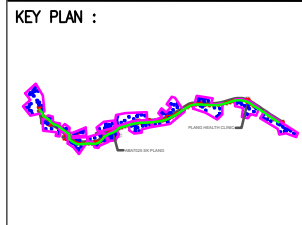
6.0 3rd PARTIES DEPENDENCIES

NO	LOCAL COUNCIL / AUTHORITY	REMARK
1	Majlis Daerah Gerik	296
2	JKR Daerah Gerik	2139



TOTAL HOME PASSES: 104 UNITS

LEGEND										
	12C FOC	Installed 1:4 splitter in FDC		Installed Pole (9m)		New Manhole(JRC7)		Tension Small / Tension Big		MH NO.
	24C FOC	FDP with (1:8) splitter		Installed Riser		House Number		Existing Manhole		Existing TNB Pole NO.
	48C FOC	Closure		Suspension Big		Existing TNB Pole		Closure NO.		New Pole NO.
	96C FOC	New Manhole (PT)		Suspension Small		LOOP		FDP NO.		SEE A-A in this page
	144C FOC	Installed Pole (7.5M)		FDC		FDP Boundary		FDC NO.		SEE SHEET XXXX



PROJECT OWNER :

KEMENTERIAN KOMUNIKASI

MAIN CONTRACTOR

PRIVASAT

SUB-CONTRACTOR :

WABTECH SDN BHD

PROJECT TITLE:

CONTRACT FOR THE PROVISION OF SUPPLY, INSTALLATION, AND COMMISSIONING OF FTTX NETWORK INFRASTRUCTURE - POP 2 PROJECT D-SIDE - ABA7025 - SK PLANG

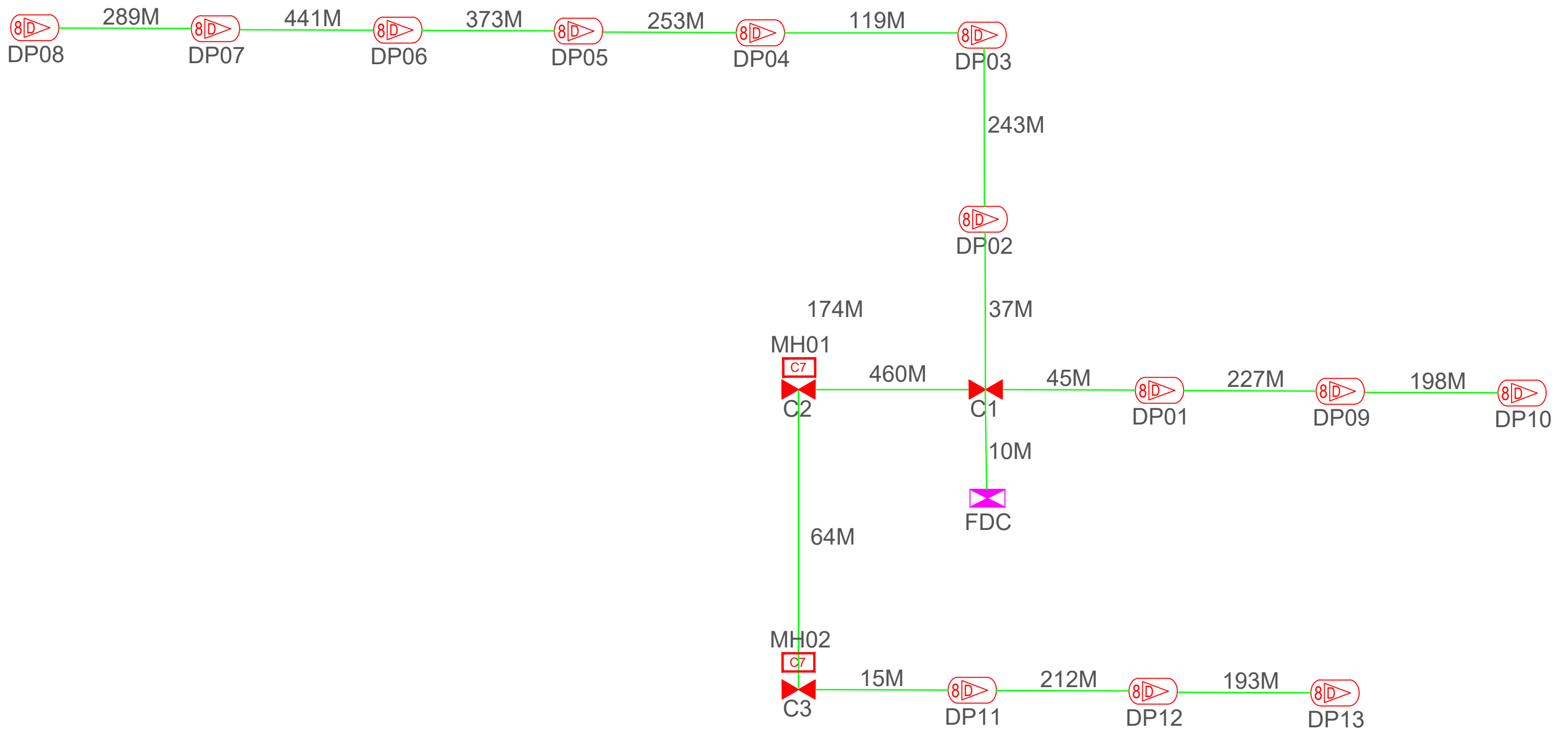
DRAWING TITLE:

ABA7025 SK PLANG

PROJECT PHASE:

PROJECT PHASE

Design By	ENGINEER	Date	DATE
Drawn By	CAD ENGINEER	Scale	NTS
Checked By	ENGINEER	Job Number	JOB/NUMBER
DRAWING NUMBER :		Sheet :	
DRAWING/NUMBER		1/1	
THIS PRINT AND ITS COPYRIGHT ARE THE PROPERTY			
Size : A3			



TOTAL FOC DISTANCE: 3,179 METERS

LEGEND											
	12C FOC		Installed 1:4 splitter in FDC		Installed Pole (9m)		New Manhole(JRC7)		Tension Small / Tension Big		MH NO.
	24C FOC		FDP with (1:8) splitter		Installed Riser		House Number		Existing Manhole		Existing TNB Pole NO.
	48C FOC		Closure		Suspension Big		Existing TNB Pole		Closure NO.		New Pole NO.
	96C FOC		New Manhole (PT)		Suspension Small		LOOP		FDP NO.		SEE SHEET XXX
	144C FOC		Installed Pole (7.5M)		FDC		FDP Boundary		FDC NO.		

KEY PLAN : 	PROJECT OWNER : KEMENTERIAN KOMUNIKASI	MAIN CONTRACTOR APEX COMMUNICATIONS SDN BHD PRIVASAT	SUB-CONTRACTOR : WABTECH SDN BHD	PROJECT TITLE: CONTRACT FOR THE PROVISION OF SUPPLY, INSTALLATION, AND COMMISSIONING OF FTTX NETWORK INFRASTRUCTURE - POP 2 PROJECT D-SIDE - ABA7025 - SK PLANG	DRAWING TITLE: ABA7025 SK PLANG	Design By ENGINEER	Date DATE
						Drawn By CAD ENGINEER	Scale NTS
PROJECT PHASE: PROJECT PHASE						Checked By ENGINEER	Job Number JOB/NUMBER
DRAWING NUMBER : DRAWING/NUMBER						Sheet : 1/1	
THIS PRINT AND ITS COPYRIGHT ARE THE PROPERTY						Size : A3	