

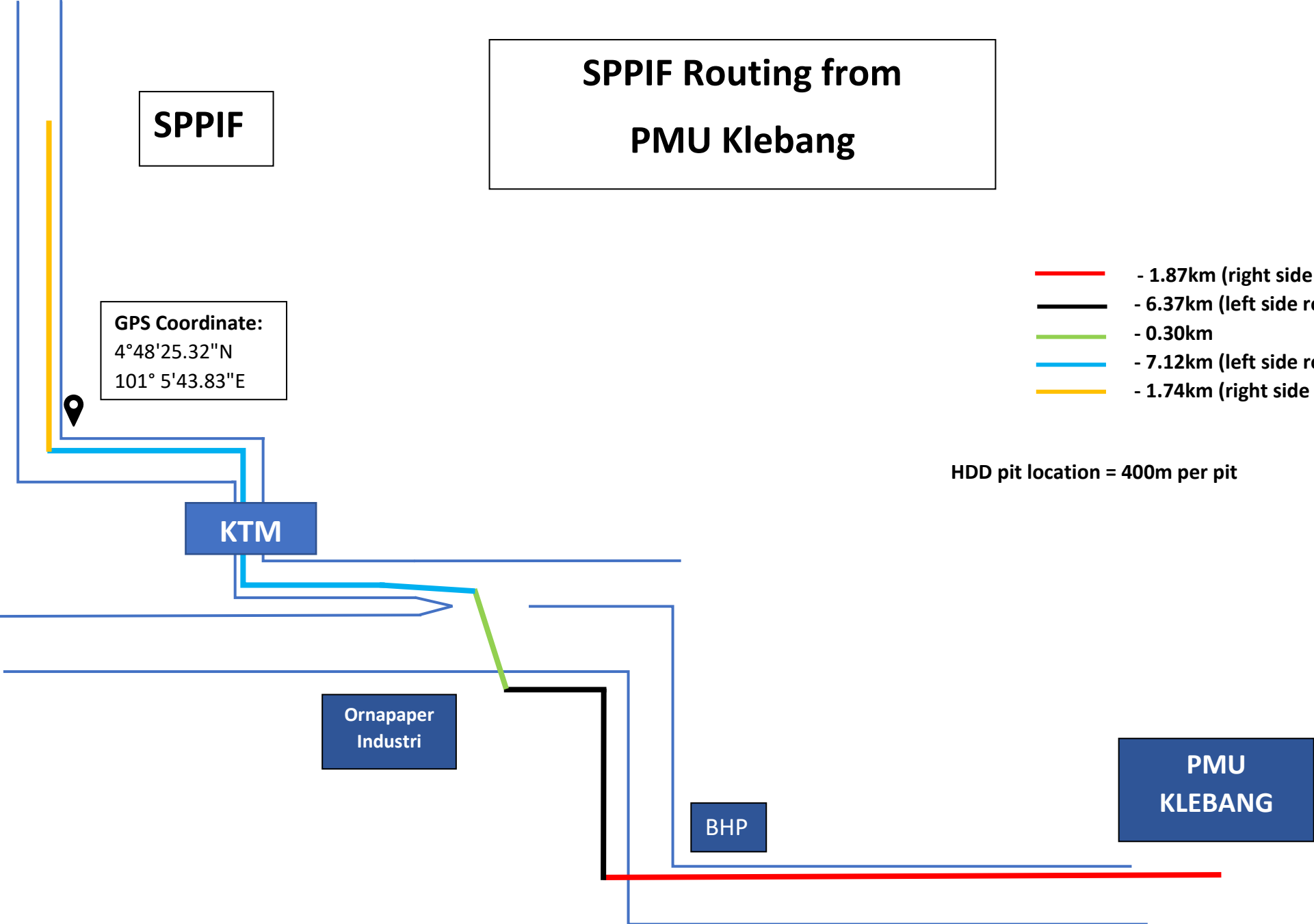
SPPIF

SPPIF Routing from PMU Klebang

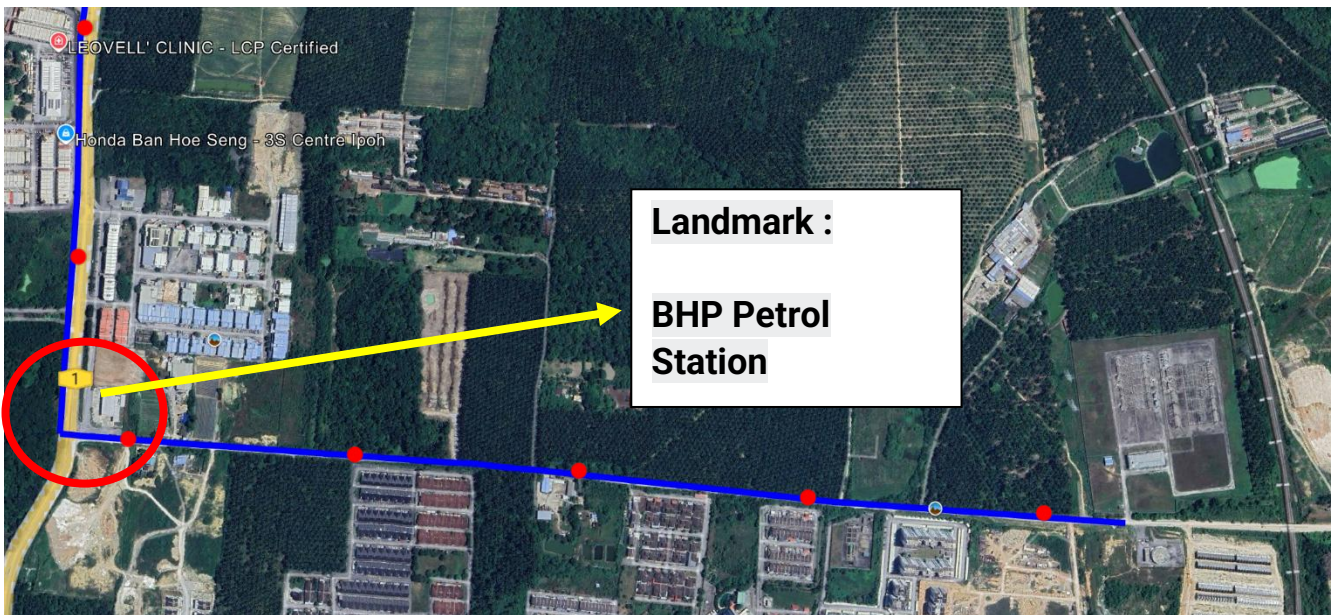
GPS Coordinate:
4°48'25.32"N
101° 5'43.83"E

- - 1.87km (right side routing)
- - 6.37km (left side routing)
- - 0.30km
- - 7.12km (left side routing)
- - 1.74km (right side routing)

HDD pit location = 400m per pit



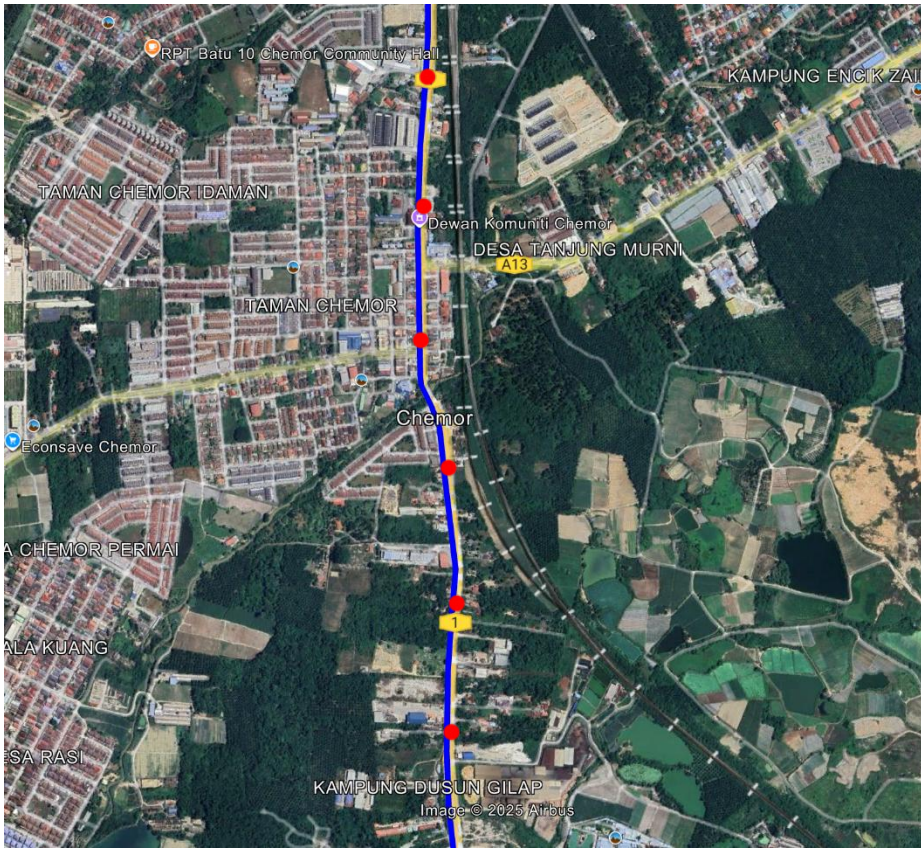
A. From PMU Klebang to BHP Station (First Crossing)



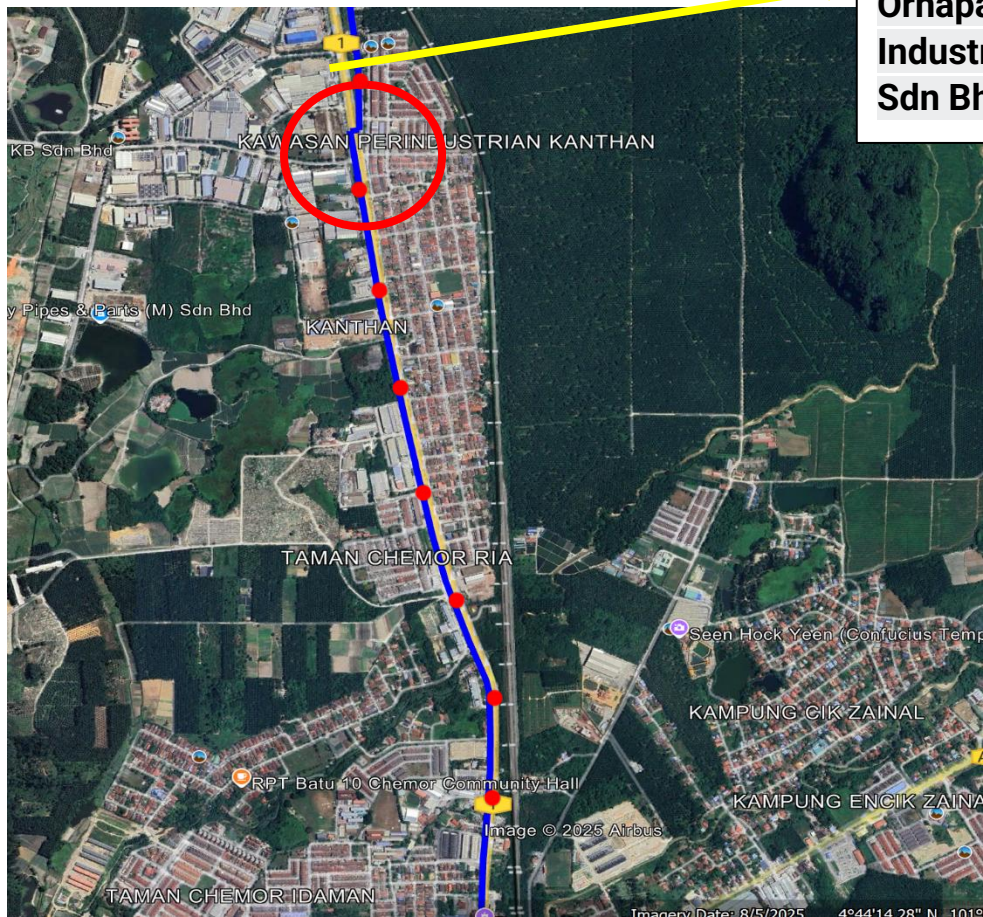
B. Con't from First Crossing -1



C. Con't from First Crossing -2

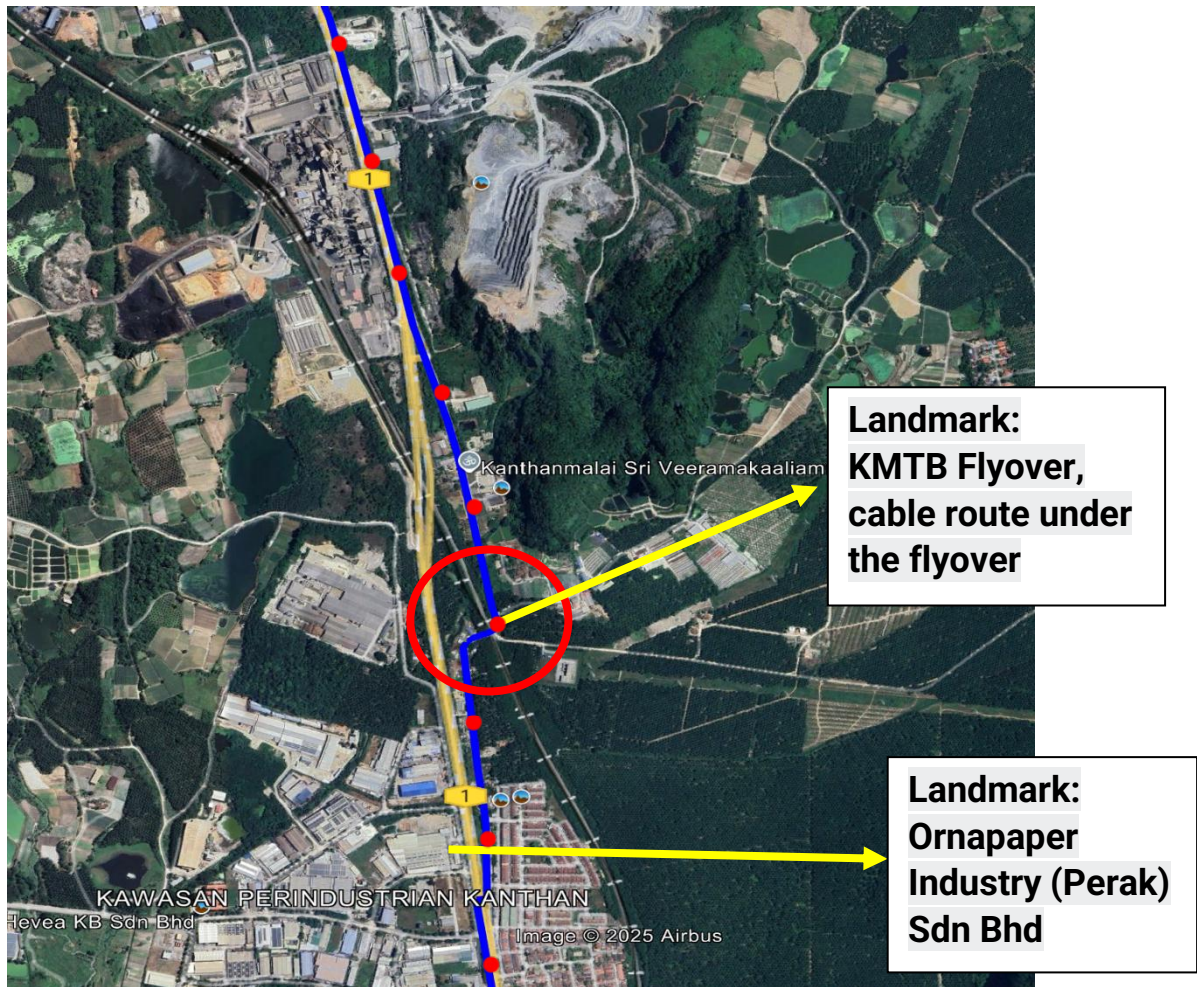


D. Second Crossing

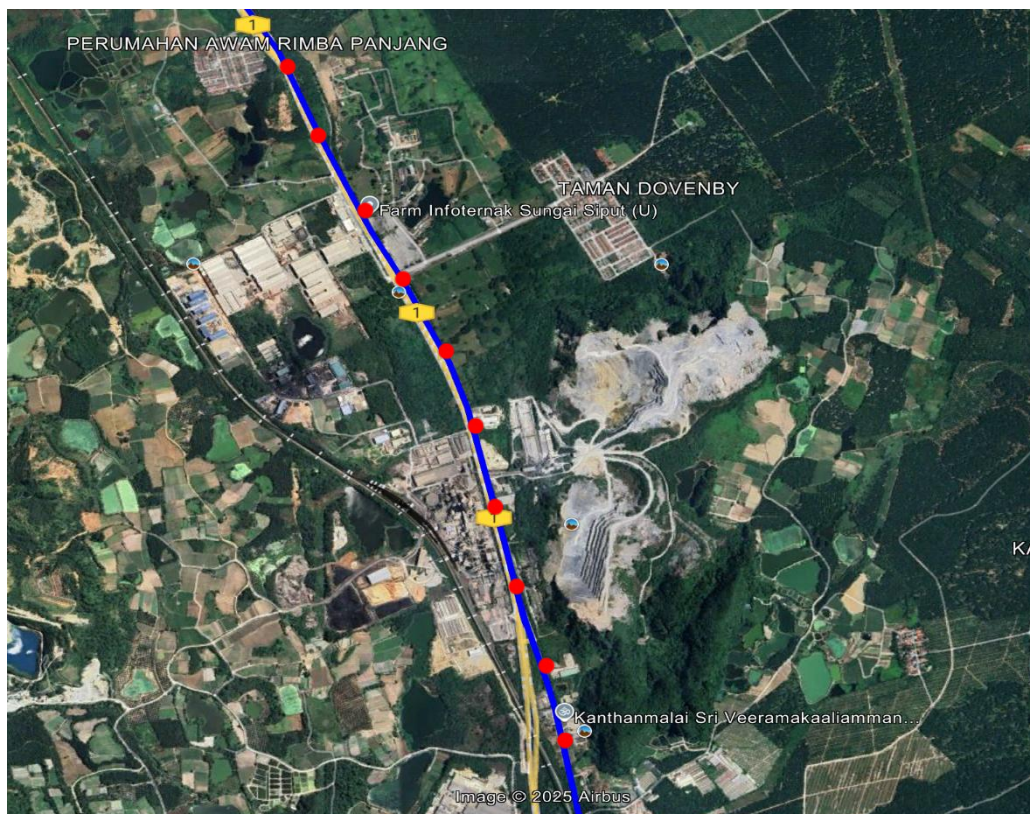


Landmark:
Ornapaper
Industry (Perak)
Sdn Bhd

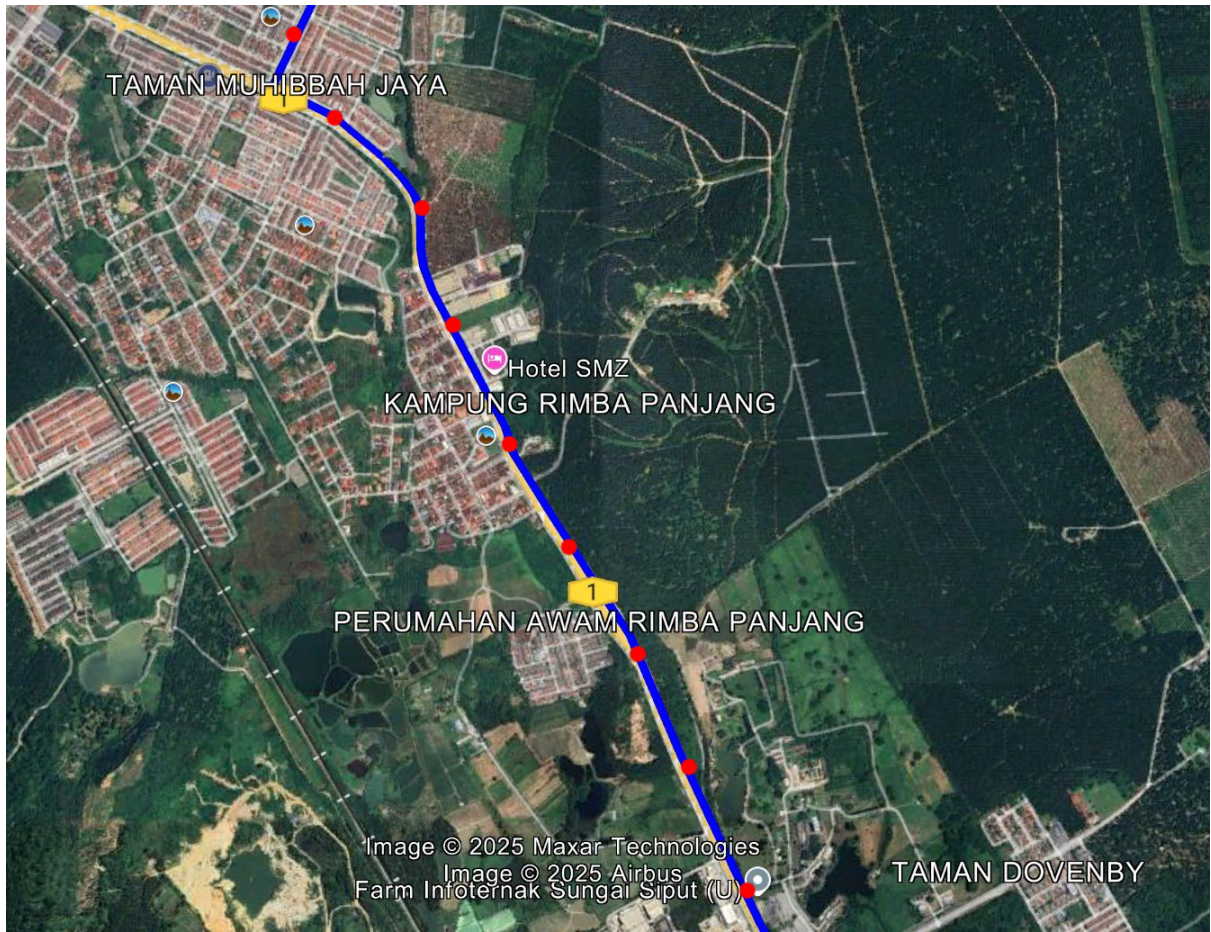
E. Third Crossing



F. Con't from Third Crossing



F. Con't from Third Crossing



G. Last Bend Towards SPPIF



G. Route Towards SPPIF – 1



H. Route Towards SPPIF – 2



H. Route Towards SPPIF – 3

